

## Maine State Library Digital Maine

---

Maine Geological Survey Core Repository

Geological Survey

---

1983

# Billiton: Winslow Area Tin Mine

Billiton Mining

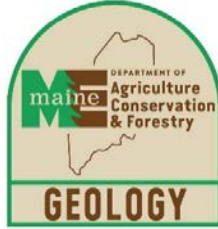
Follow this and additional works at: [https://digitalmaine.com/mgs\\_core\\_repository](https://digitalmaine.com/mgs_core_repository)

---

### Recommended Citation

Mining, Billiton, "Billiton: Winslow Area Tin Mine" (1983). *Maine Geological Survey Core Repository*. 1.  
[https://digitalmaine.com/mgs\\_core\\_repository/1](https://digitalmaine.com/mgs_core_repository/1)

This Text is brought to you for free and open access by the Geological Survey at Digital Maine. It has been accepted for inclusion in Maine Geological Survey Core Repository by an authorized administrator of Digital Maine. For more information, please contact [statedocs@maine.gov](mailto:statedocs@maine.gov).



# Maine Geological Survey

## Core Repository Data Files

---

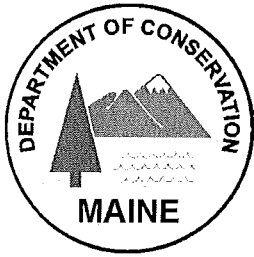
**Driller: Billiton**

**Project: Winslow Area Tin Mine**

**Town(s): Vassalboro, Winslow**

Contents:

1. Core Repository Intake Form(s)
2. Drill Hole Log(s)
3. Location Map(s)



Maine Geological Survey

**CORE REPOSITORY**

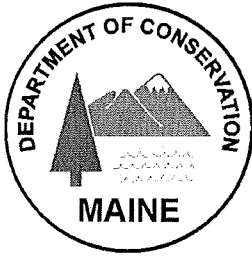
Township: Vassalboro

Company: Billiton

**CORES IN REPOSITORY:**

Hole	Depth	Comments
BCH-1		- boxes are stacked 3-deep
BCH-2		- don't know if cores are
		continuous

Also see Winslow for BCH-3,4



Maine Geological Survey

**CORE REPOSITORY**

Township: Winslow

Company: Billiton

**CORES IN REPOSITORY:**

Hole	Depth	Comments
BCH - 3		- boxes are stacked 3-deep
BCH - 4		- don't know if cores are continuous
		- near Winslow tin mine

Also see Vassalboro for BCH-1,2

Woud  
File!  
Woud

DRILLING SUMMARY

BCH-1 <sup>49</sup> 26525 N, 448680 E

Collared at 75° bearing 305°; elevation 70 m  
 Drilled to 356.6 m bearing 306.5°  
 True vertical depth 289 m  
 Horizontal offset 202 m

<u>Drilled Depth (feet)</u>	<u>Inclination</u>	<u>Bearing</u>
400	56°	-
800	48°	-
1 170	46°	306.5°

BCH-2 <sup>49</sup> 26160 N, 449330 E

Collared at 90°; elevation 52 m  
 Drilled to 423.7 m  
 True vertical depth 394 m;  
 Horizontal offset 145 m

<u>Drilled Depth (feet)</u>	<u>Inclination</u>	<u>Bearing</u>
223	76°	300°
327	74°	304°
417	74°	300°
535	72°	304°
630	71°	307°
780	68°	300°
885	67°	304°
1 000	65°	305°
1 100	63°	300°
1 222.5	59°	299°
1 380	56°	-

BCH-3 <sup>49</sup> 29790 N, 448530 E

Collared at 90°; elevation 33.5 m  
 Drilled to 304.8 m  
 True vertical depth 290 m  
 Horizontal displacement 78 m

535-800 ft. : interval w/  
veins

<u>Drilled Depth (feet)</u>	<u>Inclination</u>	<u>Bearing</u>
95	90°	-
190	86°	296°
300	81°	290°
440	77°	301°
554	73°	294°
614	70°	302°
796	64°	300°
881	62°	293°
975	61°	294°

BCH-4 <sup>49</sup> 29710N, 48700E

Collared at 90°; elevation 39.6 m  
Drilled to 487.7 m  
True vertical depth 459 m  
Horizontal offset 139 m

<u>Drilled Depth (feet)</u>	<u>Inclination</u>	<u>Bearing</u>
95	88°	300°
221	86°	300°
298	82°	294°
460	81°	307°
634	79°	290°
790	75°	293°
920	71°	304°
1 035	69°	297°
1 145	65°	- (no reading mag effect)
1 370	59°	-
~ 1 450	58°	303°
est. 1 600	55.5°	-

1300' → bottom : this 300-ft interval has veins

Total for 4 holes = 1 573 m

At Tin Mine -

Surface rock - 3000 ppm Tungsten.  
no Tin.  
15% Arsenopyrite.  
Tr. Ag & Cu (500 ppm).

Grisen veins -

Bullton needed 10MM tons at ~2% foreconomic ore deposits.  
Grants by Dennis Hodge (Bullton) - Drilling showed quality wrong - Grade lower modelled quality high.

2nd core - 1400' veins began @ about 530'  
Pyrrhotite.

CRL/gkh  
23 January 1984

Holes at Tin Mine - 2 High at 485 ppm tin.  
Core #3 - at mine.  
rich in Arsenopyrite.

over -

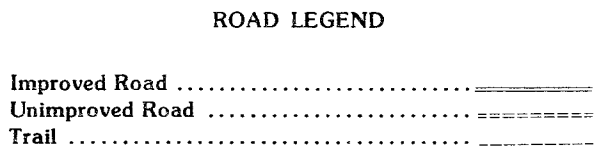
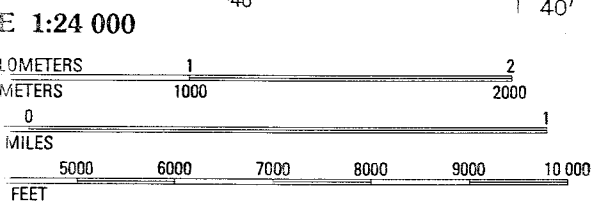
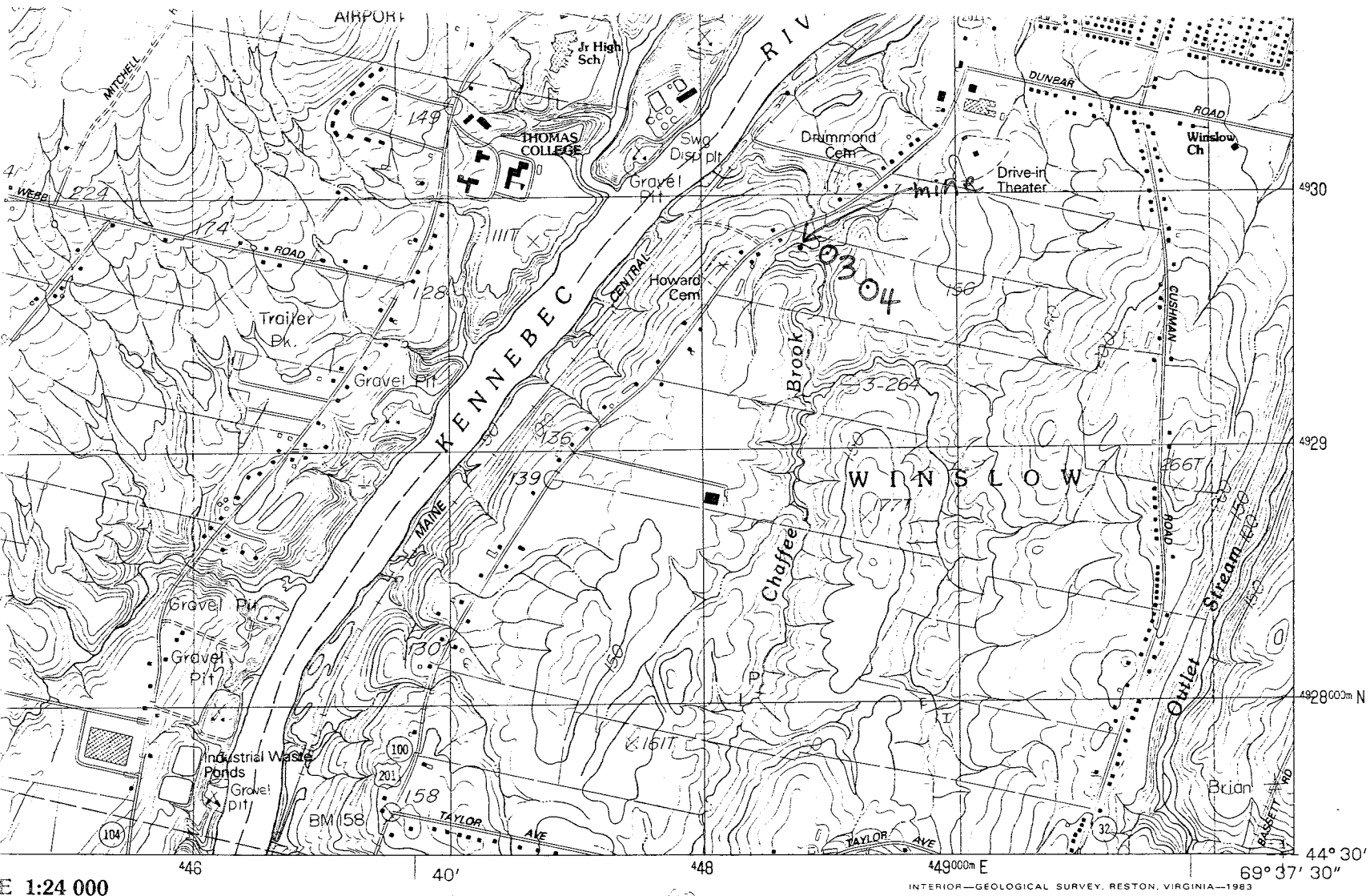
Granodiorite dikes (Elvans - veins.  
Cassiterite - Fluorite.

Costs = \$20,000 for Grants Survey  
25,000 / hole

Any ore would be deep - 700 - 1000'

Billiton leased 1300 acres involving 19 Land owners.  
Spent 350,000 in 2 years -

Gravty = 11 milligals in rocks - 13 milligal anomaly  
carried out Geophysics, Geochems., drilling.



INTERVAL 10 FEET

feet multiply by 3.2808  
 meters multiply by .3048

NATIONAL MAP ACCURACY STANDARDS  
 U.S. GEOLOGICAL SURVEY, RESTON, VIRGINIA 22092

1	2	3	1 Norridgewock
			2 Hinckley
			3 Clinton
4		5	4 Rome
			5 Fairfield
			6 Belgrade
6	7	8	7 Vassalboro
			8 China Lake

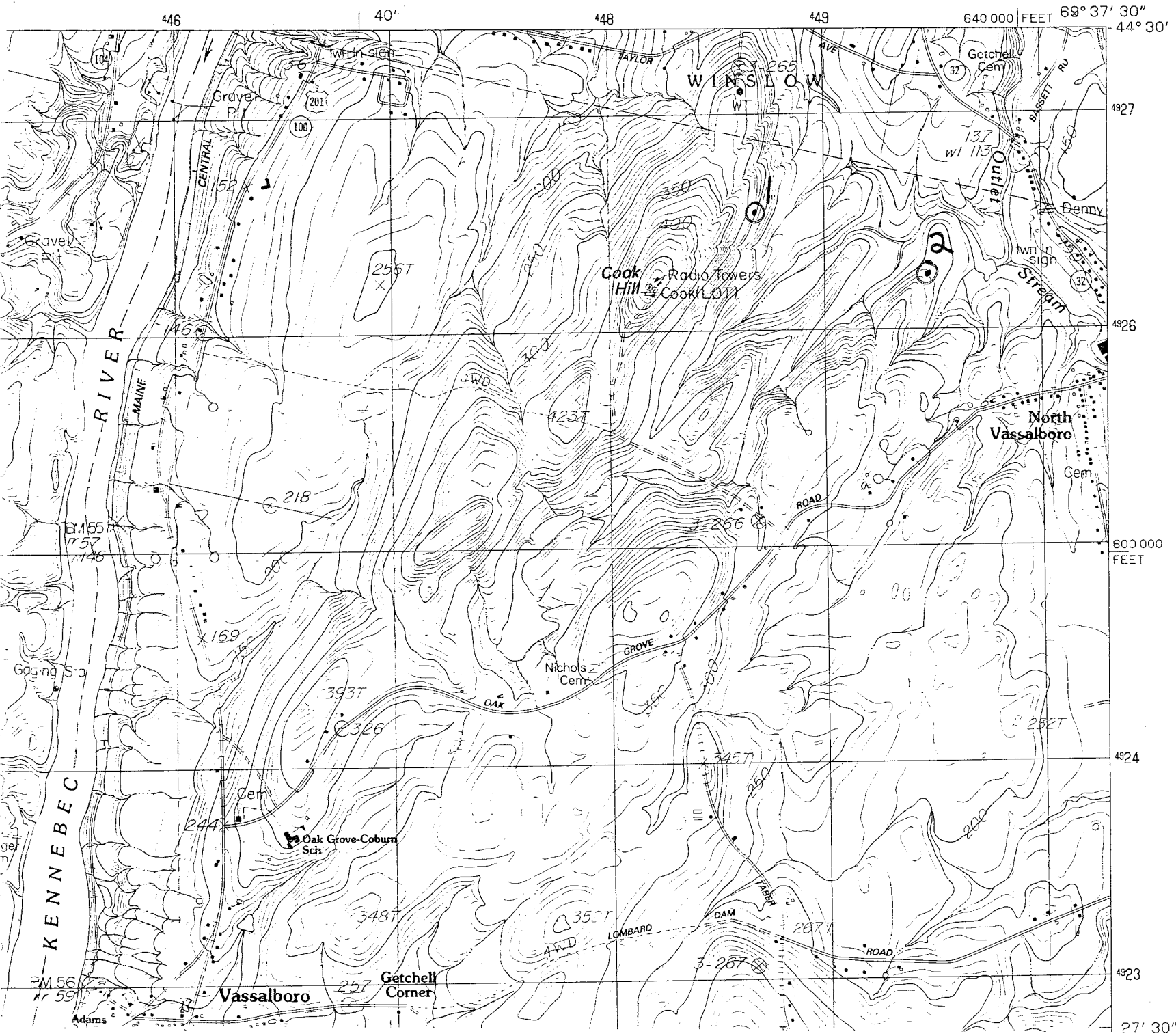
ADJOINING 7.5' QUADRANGLE NAMES

**WATERVILLE, MAINE**  
**PROVISIONAL EDITION 1982**

44069-E6-TF-024



MAINE - KENNEBEC CO.  
7.5 MINUTE SERIES (TOPOGRAPHIC)



Vassalboro 7.5'  
Quadrangle

27' 30"