

STRUCTURE OF AGRICULTURAL PRODUCTION FOR SUD-VEST OLTENIA DEVELOPING AREA (2009-2011)

MEDELETE D.M., PÂNZARU R.L.

Faculty of Agronomy, University of Craiova

Key words: total production, crop production, livestock production, services, percentage, contribution

ABSTRACT

The paper aims to specify the structure of agricultural production for the counties of the Southern Development Region - West Oltenia, with its main industries specific to agriculture: crop production, livestock production and service sector. Attempting forming an overview regarding the relative importance of each type of activity and each administrative territorial units - regionally.

INTRODUCTION

For Romania's national economy, agriculture is a key industries, serving to satisfy the population's agri-food consumption, materials manufacturing, export availabilities, etc. Even for developed countries economically (USA, Canada, Germany, France etc.), agriculture is characterized by high levels of modernization and economic efficiency, special situations being in the US and Canada, countries that are large exporters of agricultural products.

Romanian Agriculture is an industry producing goods - plant and animal - with a long tradition and has favorable natural conditions.

Place of agriculture in the economy of a country can be assessed by two categories of parameters: endogenous and exogenous.

Production Branch activities relatively homogeneous groups down menus to obtain certain goods or services, characterized by the joint nature of the products produced, specialization of labor, community and technology inputs.

Production branch is part of the production activity of the agricultural unit, which are characterized by communion finished product, the means used and the qualifications of the workforce.

Specific features that define a particular branch of production and which are individualized: the finished product obtained and its economic destination; the means of production used and applied technology; determinant of labor specialization.

METHOD AND MATERIAL

Preparation of the study appealed to comparison method in time and space. Besides temporal sequences included in the analysis, it was also used their media.

Comparison method. This method appreciates the results of a farm and compare them with the baseline that can be appealed. The comparison can be done in time, in space, or may be a mixed one.

Time comparison follows the evolution of a phenomenon dynamic for a certain period, and highlights the deviations to the terms of reference with which it operates.

In the case of comparison in space, are followed: comparing results from different farms or different sections of the farm; comparing the results of farms with similar profile; farm comparing the results with those recorded - as average - at branch, district, region etc.

Combined comparison, is made based on combining both types previously submitted, aiming to examine the technical and economic processes and phenomena and the results of the farm.

Correct use of comparison method implies certain conditions which guarantee the comparability of data: presentation of results using the same system of indicators; ensure the unitary character of the contents, methodologies and metrics of the indicators used.

Comparison shows a general image upon researched processes and phenomena trend, this is based on their analysis in parallel to the terms of reference. If technical and economic analysis deals with the issue in terms of cause-effect relationship, the comparison is geared toward examining the effects.

For this work it was used agricultural production value, expressed in lei current prices for the period 2009 - 2011. Level of the indicator is presented both as a whole and for the three component sectors of agriculture: crop production, animal production and nature of services zone.

To perform the work it was appealed to setting of structure parameters for total production, taking into account the three components: crop production, livestock production and services. Simultaneously there were used the dynamic indices: indices with fixed base and mobile base indices or chain.

RESULTS AND DISCUSSIONS

Table 1 presents data for agricultural production structure, over 2009-2011, for the South - West of Romania.

Table 1.

South-West - The structure of agricultural production (2009 - 2011) *
-Thousand lei c.p.-

Year	Total	Vegetal		Animal		Services	
		Effective	% din total	Effective	% din total	Effective	% din total
2009	7026696	4515577	64,26	2437556	34,68	73563	1,06
2010	7192228	5200363	72,30	1946137	27,05	45728	0,65
2011	8740835	6604846	75,56	2107842	24,11	28147	0,33
Average 2009 - 2011	7653253	5440262	71,08	2163845	28,27	49146	0,65
Share at national level (%)	11,43	12,23	-	9,89	-	7,96	-

<http://www.dolj.insse.ro/cmsdolj/rw/pages/R42.ro.do>

In the case of 2009, total agricultural production has reached a level of 7026696 thousand lei, of which, vegetable sector held a share of 64.26%, followed - downward - by the livestock sector with 34.68% and the agricultural services 1.06%. Related of the weights aforementioned the three sectors of activity recorded absolute values of total production: 4515577, 2437556 and 73563 thousand lei - crop production, livestock and supply of services respectively.

For 2010, the area is characterized by total sectorial production of 45728 thousand lei for services, 1946137 thousand lei for industry livestock and 5200363 thousand lei at the level of crop production, values that determine the general value of the indicator 7192228 thousand lei. Based on the data above, it was determined the structure of the indicator showing weights of 0.65% for services, livestock 27.05%, 72.30% vegetable production sector.

The year 2011 is characterized by a total agricultural production of 8740835 thousand lei, of which the plant has achieved 6604846 thousand lei, the manufacturing sector 2107842 thousand lei livestock and supply of services only 28147 thousand lei. In

this case the descendant share of sectors in total is 75.56%, 24.11% and 0.33% - crop production, animal husbandry, and service charges.

Data for the years 2009, 2010 and 2011 led to an average of the period of 7653253 thousand lei - general level of the indicator - in whose structure (Fig. 4.1.) are found, in descending order: the production plant – 71,08% and 5440262 thousand lei; livestock – 2163845 thousand lei 28.27% respectively; and the providing services for agriculture - 0.65% 49146 thousand lei.

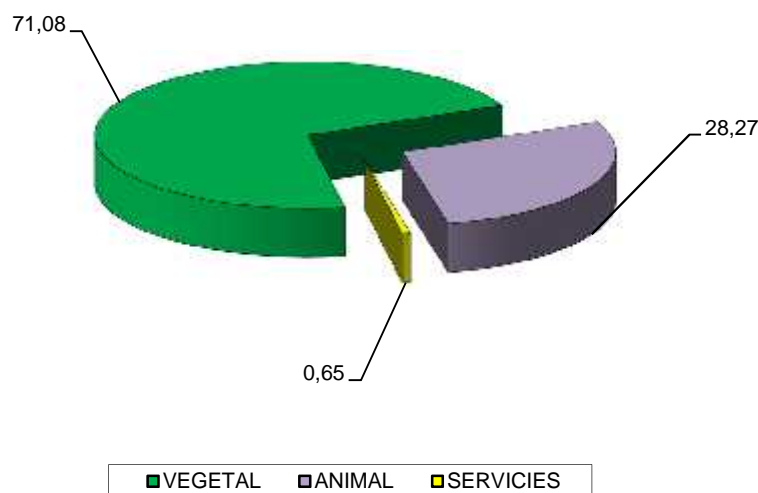


Figure.1. South - West. Agricultural production structure (%) - period average

Based on existing values in the table, the region's share was determined at national level, leading to the following position: 11.43% for total production; 12.23% for plant production; 9.89% in livestock production; 7.96% for services.

The data in Table 2 presents the evolution - in dynamics – of total agricultural production and for the indicator in three sectors of the domestic component of economic activity.

Table 2.
South - West - Agricultural production, dynamic*

Year	Total		Vegetal		Animal		Service	
	lbf	lbn	lbf	lbn	lbf	lbn	lbf	lbn
2009	100	100	100	100	100	100	100	100
2010	102,4	102,4	115,2	115,2	79,8	79,8	62,2	62,2
2011	124,4	121,5	146,3	127,0	86,5	108,3	38,3	61,6
Average 2009 - 2011	108,9	87,6	120,5	82,4	88,8	102,7	66,8	174,6

* own calculation

In case of total agricultural production, time evolution, is strictly upward. In this regard, bear witness the above par values of fixed and mobile based indices that make up the dynamic (except those with low mobile base in the period average - 87.6% compared to term of reference - 2011). The first category of indicators - those with fixed base - exceeding the reporting base - 2009 -, the increase was 2.4, 8.9 and 24.4% in 2010 and in the case of the average of the period of 2011. At the level of mobile base indices, annual exceeding of comparison terms were 1.04 times and 1.21 times in 2010 in the case of 2011.

Referring to the situation of vegetable production sector, stands out the exceeding of reporting base by 1.15 times in 2010 compared to 2009, exceeding of comparison terms by 1.27 and 1.46 times in 2011. For period average fixed base indices are above - 120.5%, while mobile base indices are lower that reporting value by 17.6%.

If we refer to the specific situation of livestock sector, sequentially we see: for 2009 a decrease compared to baseline by 20.2%; in 2010 an exceeding of 1.08 times for the situation of previous year and a decrease of 13.5% compared to the first term of dynamical series; the average period is superior by 2.7% to the previous term of the dynamic series and decreased compared to 2009 by 11.2%.

For the service sector, value of production achieved falls in 2010 and 2011 compared with all reporting databases. The fixed base indices are strictly below par (62.2 and 38.3% respectively in 2010 and 2011), as well as those with mobile base - 62.2 and 61.6% (for the years mentioned above). The average period is lower by 33.2% compared to the first reference term, but outruns by 1.74 times the second term of comparison.

Table 3 presents a summary of regional structure in total agricultural production (average of reporting period) and by sector (crop production, animal husbandry, agricultural services - based on the values associated with the production obtained in each county).

Table 3.
South - West. County agricultural production structure - Average 2009 - 2011*

Specification	Production							
	Total		Vegetal		Animal		Service	
	Effective -mii lei pc -	Str. -%-	Effective -mii lei pc -	Str. -%-	Effective -mii lei pc -	Str. -%-	Effective -mii lei pc -	Str. -%-
Dolj	2192302,7	28,65	1635449,7	30,06	515998,7	23,85	40854,3	83,13
Gorj	1112204,2	14,53	713537,2	13,12	397827,3	18,39	839,7	1,71
Mehedinți	1115497,7	14,57	784046,3	14,41	330805,4	15,29	646,0	1,31
Olt	1990426,7	26,01	1426376,7	26,22	558109,7	25,79	5940,3	12,09
Vâlcea	1242821,7	16,24	880852,0	16,19	361104,0	16,68	865,7	1,76
Total regional	7653253,0	100	5440262,0	100	2163845,0	100	49146,0	100

* own calculation

The existing situation for total output, have the following structure (fig. 2): 14.53% Gorj County; 14.57% Mehedinți County; Valcea 16.24%; Olt 26.01%; 28.65% Dolj County.

Regarding the structure of crop production dominates Dolj and Olt counties weights of 30.06 and 26.22% respectively (over half the regional production), followed by 16.19% Valcea, Mehedinți with 14.41 % and finally with 13.12% Gorj (and order situation is similar to the one above (fig. 3).

For the livestock sector, Olt county stands with the largest share (25.79%), closely followed by Dolj County (23.85%). Other districts have shares below 20%: 18.39% Gorj, Valcea 16.68% and 15.29% Mehedinți (Figure 4.).

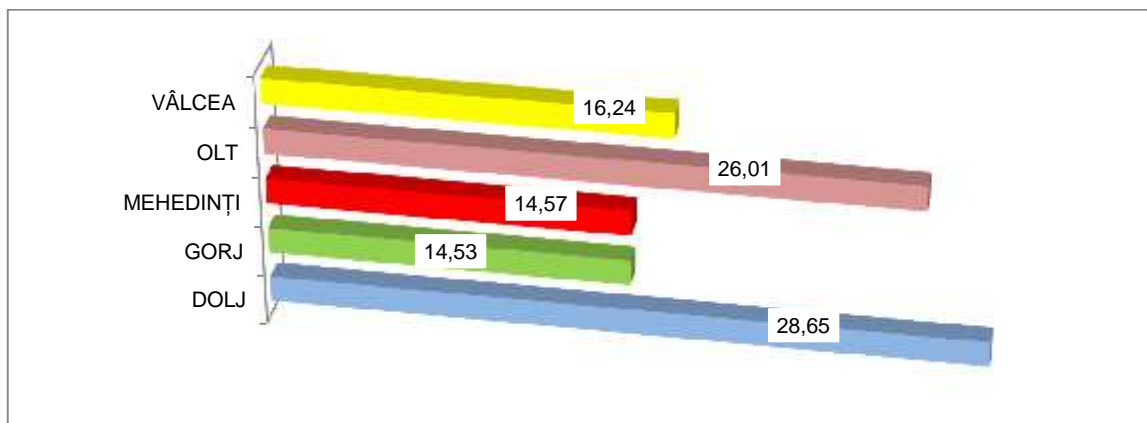


Figure. 2. South West region. Agricultural production - the county structure (%) - Period average

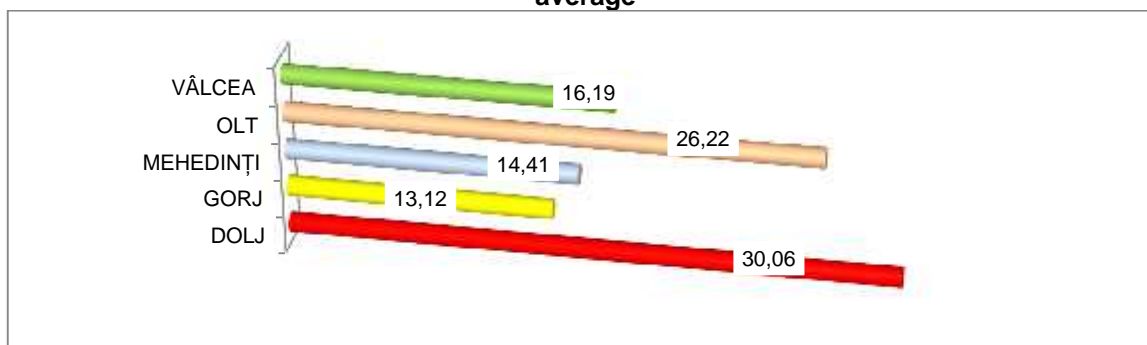


Figure. 3. South West. Crop production - county structure (%) - Period average

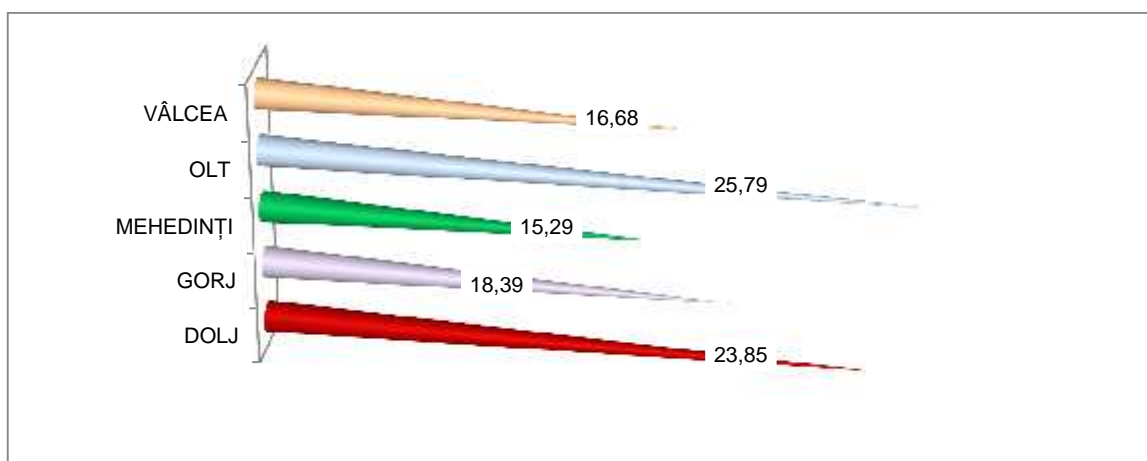
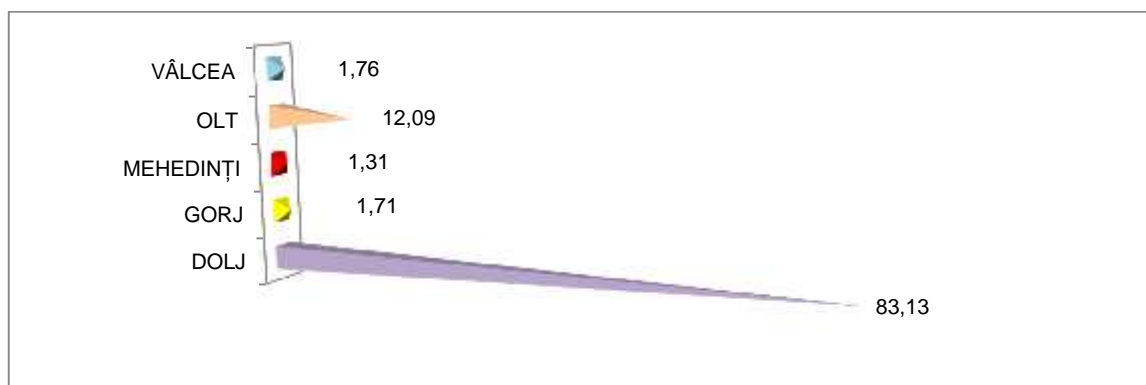


Figure 4. South West Region. Agricultural production Livestock - county structure (%) - Period average

The production value generated by services, present the most imbalances structure, predominantly being Dolj County with 83.13%, followed far from Olt County with 12.09%. Other counties represents between 1 and 2% of the total, as follows (fig. 5): 1.76% Valcea, Gorj 1.71%, 1.31% County.



**Figure. 5. South West. Agricultural production services - county structure (%)
- Period average**

CONCLUSIONS

- a. South – West Region is noted in all components, of dynamical series, the preponderance of vegetable production sector (over 64% - 64.26, 72.30 and 75.56% in 2009, 2010 and respectively for 2011), followed at a considerable distance of sector the animals (24.11, 27.05 and 34.68% for the years 2011, 2010 and 2009), while supplies of services exceeded the threshold of 1% only in 2009. As a result appears the need to reconsider sectors of livestock and provision of services;
- b. At regional level is noted a certain balance between Dolj and Olt counties in terms of predominance - in structure (the two argued over the first two places overall for crop production - prevails Dolj + 3.84% and 2.64% while at livestock production Olt exceeds Dolj county by 1.94%). Unfortunately at the level of provision of services, Dolj does not have any competition (83.13%). Among the remaining counties are not huge differences: 1.71% overall, 3.07% for plant production, livestock 3.1% and 0.45% in the business services;
- c. should be emphasized the need to reinvigorate at regional level livestock production, especially for Valcea, Gorj and Mehedinți, who have great potential, at least through the existing natural grassland in the territory.

BIBLIOGRAPHY

1. **Barbu C., Pânzaru R.L.**, 2000, *Agrarian Economy*, Hyperion Publishing House, Craiova
2. **Pânzaru R.L., Medelete D. M.**, 2005, *Agrarian Economy, Applications*, Ed. Universitaria Craiova
3. **Pânzaru R. L., Medelete D. M., tefan G.**, 2007, "Elements of management and marketing in agriculture" Universitaria Craiova.
4. **Pânzaru R. L., Medelete D. M., tefan G.**, 2009 "The economy crop production" Universitaria, Craiova
5. **tefan G., Bodescu D., Toma A.D., Pânzaru R.L.**, 2007, *Economic and agro-food chain*, Ed. Alfa la i
6. *<http://www.dolj.insse.ro/cmsdolj/rw/pages/R42.ro.do>