

Study of liquid-liquid equilibrium of toluene + heptane with the ionic liquid 1,3-dimethylimidazolium methylsulfate at 318.15 K

Estudio del equilibrio líquido-líquido de tolueno + heptano con el líquido iónico 1,3-dimetilimidazolio metilsulfato a 318.15 K

Marlon Doney Martínez Reina^{1*}, Eliseo Amado González^{2*} y Yonny Mauricio Muñoz Muñoz³

¹ Magister en Química, Universidad de Pamplona. Estudiante de Doctorado en Ciencias Químicas, Universidad del Valle, Cali, Colombia. *marlon.martinez@correounivalle.edu.co

² Doctor en Ciencias Químicas, Facultad de Ciencias Básicas, Universidad de Pamplona, Pamplona, Colombia *eamadogon@gmail.com

³ Estudiante Doctorado en Ingeniería Química, Universidad del Valle, Cali, Colombia *gammauricio@hotmail.com

Fecha de recepción del artículo: 06/09/2012 Fecha de aceptación del artículo: 28/12/2012

Abstract

The extraction of toluene from heptane was analyzed by liquid extraction with 1,3-dimethylimidazolium methylsulfate [MMim][MeSO₄] ionic liquid, as a solvent. The experimental (liquid + liquid) equilibrium (LLE) data were determined at T= 318.15 K and atmospheric pressure. Selectivity and distribution coefficient, derived from the tie-lines, were used to determine the ability of this ionic liquid as solvent for the separation of toluene from its mixtures with heptane. The degree of consistency of the experimental LLE data was ascertained using the Othmer-Tobias equation. The experimental data for LLE of the ternary system were correlated with the Non-Random Two-Liquid (NRTL) and UNIversal QUAsi-Chemical (UNIQUAC) thermodynamic models.

Key Words

Liquid-liquid equilibrium, ionic liquids, [MMim][MeSO₄], extraction, toluene.

Introduction

The removal of aromatic hydrocarbons from gasoline to comply with stricter legislative limits in the

early 1990s has resulted in a continuous attempt to improve current industrial processes for the separation of aromatic compounds [1]. Industrially, the use of toxic and flammable solvents as sulfolane, ethylene glycols or N-methylpyrrolidone requires further operations, additional investments and energy consumption [2-6]. In the last decade, ionic liquids have received great attention as solvents in experimental measurements of LLE in ternary systems [ionic liquids + aromatic hydrocarbons + aliphatic hydrocarbons] [7-24]. Among the different groups of ionic liquids, alkylsulfate-based ionic liquids have been shown to be less expensive, less viscous, more hydrolytically stable, halogen free and more environmental friendly than other ionic liquids [22, 25]. In this context, alkylsulfate-based ionic liquids have emerged as a novel alternative to traditional organic solvents due to their non-volatile nature [26]. Research activities of our laboratory comprise, among others, the extraction of aromatic compounds from aliphatic/aromatic mixtures using alkylsulfate-based ionic liquids as solvent. In previous paper [27], LLE of benzene + (hexane, heptane and cyclohexane) with 1-ethyl-3-methylimidazolium ethylsulfate, [EMim][EtSO₄] at 308.15 K was studied.

In this work, LLE for the ternary system {heptane(x_1) + toluene(x_2) + [MMim][MeSO₄](x_3)} was determined at $T = 318.15$ K and atmospheric pressure. From the experimental data, selectivity, S , and distribution coefficient, β , were calculated to determine the feasibility of [MMim][MeSO₄] in solvent extraction processes. The consistency of tie-line data was ascertained by applying Othmer–Tobias equation [28]. The Non-Random Two-Liquid (NRTL) and UNiVersal QUAsi-Chemical (UNIQUAC) models were used to correlate the experimental data for the ternary system studied [29, 30]. Figure 1 show the structure of [MMim][MeSO₄].

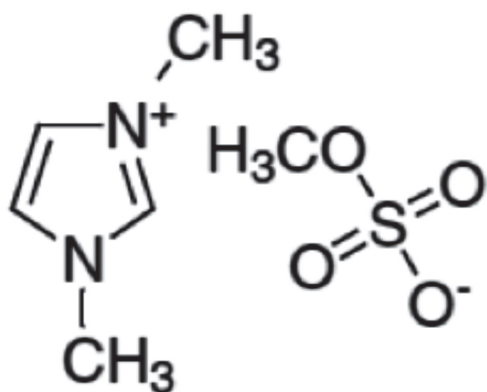


Figure 1. Structure of 1,3-dimethylimidazolium methylsulfate ([MMim][MeSO₄]).

Experimental

Chemicals

Toluene and heptane were purchased from Fluka with purity higher than 99.5% and 99.9% by mass, respectively and used as received, without further

purification. The [MMim][MeSO₄] with purity higher than 98%, was obtained from Sigma-Aldrich. It was purified by heating in a vacuum at 353.15 K for 24 h to remove any traces of volatile components including water. Water content was measured using a 787 Karl Fischer Titrino, and the ionic liquid showed that the mass fraction of water was less than 3.2×10^{-3} . The ionic liquid was kept in bottles with inert gas.

The physical properties (density and refractive index) of the pure components at $T = 298.15$ K and literature data [31–33] are compared in Table 1. The small differences between experimental and literature data may be attributed to the presence of water or non-volatile impurities in the samples.

Experimental procedure

For the preparation of samples, a Mettler Toledo balance with an accuracy of $\pm 10^{-4}$ g was used and the temperature of mixtures was maintained constant in a thermostatic bath (PoliScience digital temperature controller) with a precision ± 0.01 K. Density measurements were carried out using a pycnometer of approximately 20 cm³. Firstly, the pycnometer was calibrated with distilled water of known density, and then it was filled with sample and immersed in a thermostatic bath. About 120 min later, the samples was weighed. A cover was used in order to prevent the samples from absorbing water or volatilizing. The uncertainty of the density measurements was estimated to be $\pm 0.05\%$. The refractive index was measured in a Reichert AR 200 refractometer. The uncertainty in the measurements is $\pm 1 \times 10^{-4}$.

Table 1. Density (ρ) and refractive index (n_D) of pure components at $T = 298.15$ K.

component	ρ (g cm ⁻³)		n_D	
	Experimental	Literature	Experimental	Literature
[MMim][MeSO ₄]	1.3271	1.3272 [31]	1.4830	1.48270 [31]
heptane	0.6796	0.6796 [32]	1.3853	1.3853 [32]
toluene	0.8622	0.86229 [33]	1.4942	1.4941 [33]

Determination experimental LLE.

The LLE experiments with the ternary system were performed in 30 cm³ glass jacketed vessels with screw caps providing hermetic sealing. The mixtures were gravimetrically prepared, introduced into glass jacketed vessels with magnetic stirrers, and closed. The jackets were connected to a thermostat bath to maintain a constant temperature of 318.15 K in the vessels. Previous experiments showed that equilibrium was established after about 3 h stirring (800 rpm) and then 12 h to ensure thermodynamic equilibrium and complete phase separation at constant temperature [34]. Then, samples of both layers were withdrawn using syringes. Samples from the hydrocarbon-rich phase were analyzed by ¹H NMR and showed no detectable signals arising from the ionic liquid. The phase composition was analyzed by gas chromatography using an internal standard method. It is important to mention that since the ionic liquid is immiscible with the binary systems heptane + toluene, the presence of ionic liquid in the hydrocarbon-rich phase was assumed to be zero and the ionic liquid composition in the other phase was calculated by mass balance. The gas chromatograph used was an HP 6890 series equipped with a flame ionization detector (FID), an HP-FFAP capillary column (25 m x 0.2 mm x 0.3 μm), and an empty precolumn to protect the column and collect the ionic liquid that could not be retained by liner. Measurements were done by triplicate. The averages of the three measurements were used in our results. The estimated uncertainties in the compositions were calculated as the standard deviation of the measurements, less than 0.001.

Results and discussion

The experimental LLE data (tie-lines) for the system in study at 318.15 K are shown in Table 2. The binodal curve and tie-lines presented in Figure 2 show that toluene and heptane are partially soluble in [MMim][MeSO₄]. The size of the two-phase region and, consequently, the tie-lines, is significantly large. This suggests that a good separation of toluene

from heptane using [MMim][MeSO₄] could be possible. The percent removal of the aromatic, distribution coefficient, β, and selectivity, S, were calculated from the experimental composition of the tie-line ends as:

$$\% \text{ removal aromatic} = \frac{w_{LI}}{w_H + w_{LI}} \quad (1)$$

where w_{LI} and w_H are the amount toluene in ionic liquid-rich phase and hydrocarbon-rich phase, respectively.

$$\beta = \frac{x_2^{II}}{x_2^I} \quad (2)$$

$$S = \frac{x_2^{II} x_1^I}{x_2^I x_1^{II}} = \beta \frac{x_1^I}{x_1^{II}} \quad (3)$$

x_1^I and x_2^I are the mole fractions of heptane and toluene, respectively, in the hydrocarbons-rich phase, and x_1^{II} and x_2^{II} are the mole fractions of heptane and toluene, respectively, in the ionic liquid-rich phase. Table 2 shows the percent removal of the aromatic, distribution coefficient and selectivity.

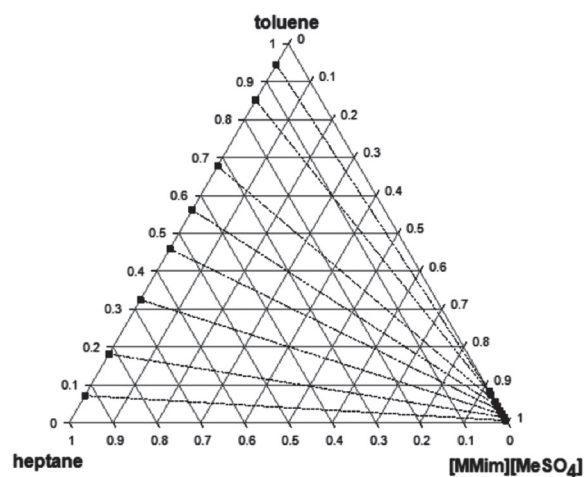


Figure 2. Ternary phase diagram of heptane(x_1) + toluene(x_2) + [MMim][MeSO₄](x_3) at 318.15 K.

Table 2. Liquid-liquid equilibrium of system heptane (x_1) + toluene (x_2) + [MMim][MeSO₄](x_3) at 318.15 K.

Hydrocarbon-rich phase			Ionic liquid-rich phase			% removal of aromatic	β	S
x_1	x_2	x_3	x_1	x_2	x_3			
0.9285	0.0715	0.0000	0.0012	0.0061	0.9927	3.9	0.085	66.01
0.8186	0.1814	0.0000	0.0012	0.0146	0.9842	3.7	0.080	54.90
0.6755	0.3245	0.0000	0.0010	0.0225	0.9765	3.2	0.069	46.84
0.5411	0.4589	0.0000	0.0009	0.0326	0.9665	3.2	0.071	42.71
0.4383	0.5617	0.0000	0.0008	0.0429	0.9563	3.5	0.076	41.84
0.3231	0.6769	0.0000	0.0008	0.0571	0.9421	3.8	0.084	34.07
0.1486	0.8514	0.0000	0.0006	0.0742	0.9252	3.9	0.087	21.58
0.0549	0.9451	0.0000	0.0006	0.0824	0.9170	3.9	0.087	7.98

The selectivity is shown in Figure 3, while the distribution coefficient is shown in Figure 4. Comparisons with literature data for the ternary systems {heptane (x_1) + toluene (x_2) + solvent (x_3)}, solvent = [MMim][MeSO₄], [EMim][EtSO₄] and sulfolane at $T = 313.2$ K were also made [10, 22]. The literature data for the systems heptane(x_1) + toluene(x_2) + [MMim][MeSO₄] (x_3) are similar to our experimental data. The values of selectivity decrease with increasing compositions of the aromatic compound in the hydrocarbon-rich phase. It has been published [18] that the aromatic solutes and the ionic liquids cations interact in an alternating structure through $\pi - \pi$ interactions with ionic liquid anions. As the aromatic content increases, the distance between toluene and cations becomes larger and therefore the strength of interaction and, consequently, the solute distribution ratio is reduced [18]. As can be observed in Figure 3, the use of ionic liquids leads to selectivity values higher than sulfolane (solvent traditional). The high polarity of the R-SO₄ anion could explain this behavior [22]. The values of the experimental selectivity, always above 1, suggest that the toluene extraction is possible with [MMim][MeSO₄] at 318.15 K.

The literature data at 313.2 K (see Figure 3) show the effect of the nature of the ionic liquid, the selectivity values increase in the form [EMim][EtSO₄] < [MMim][MeSO₄], the alkyl chain length in the R-SO₄ anion and the imidazolium cation grows and the selectivity of toluene decrease, that which

would mean lesser polarity of the ionic liquid and more affinity toward heptane [22]. The values of the distribution coefficients (see figure 4) are lower than unity and this implies more complex processes and more quantities of ionic liquid, the low solubility of toluene in ionic liquid-rich phase, Figure 2, explains this behavior and low aromatic recovery from their mixture with heptane.

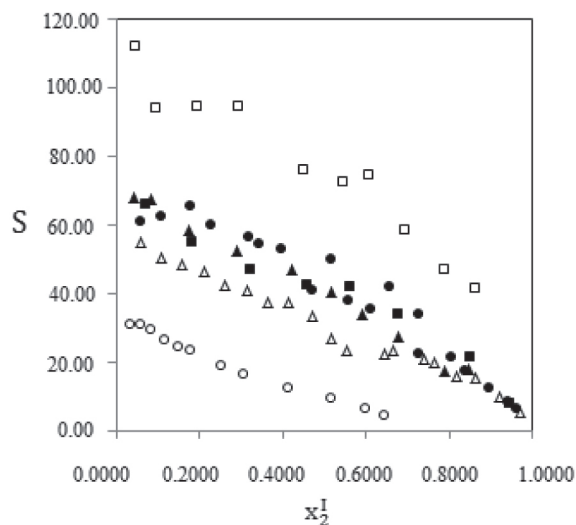


Figure 3. Selectivity as a function of the fraction molar of toluene in hydrocarbon-rich phase for the ternary systems heptane (x_1) + toluene (x_2) + solvent (x_3). Solvent: ■: [MMim][MeSO₄] at 318.15 K this work, □: [MMim][MeSO₄] at 313.2 K [22], ●: [MMim][MeSO₄] at 313.2 K [10], ▲: [EMim][EtSO₄] at 313.2 K [22], △: [EMim][EtSO₄] at 313.2 K [10] and ○: sulfolane at 313.2 K [10].

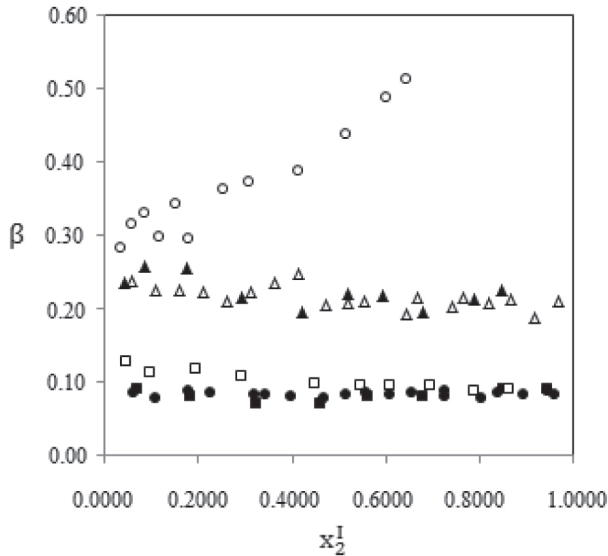


Figure 4. Distribution coefficient for the ternary systems heptane (x_1) + toluene (x_2) + solvent (x_3). Solvent: ■: [MMim][MeSO₄] at 318.15 K this work, □: [MMim][MeSO₄] at 313.2 K [22], ●: [MMim][MeSO₄] at 313.2 K [10], ▲: [EMim][EtSO₄] at 313.2 K [22], Δ: [EMim][EtSO₄] at 313.2 K [10] and ○: sulfolane at 313.2 K [10].

The reliability of the experimental tie-lines can be ascertained by applying the Othmer-Tobias equation [28]:

$$\ln\left(\frac{1 - w_1^H}{w_1^H}\right) = a + b \ln\left(\frac{1 - w_3^{LI}}{w_3^{LI}}\right) \quad (4)$$

where w_1^H is the fraction mass of heptane in the hydrocarbon-rich phase; w_3^{LI} is the fraction mass of ionic liquid in the ionic liquid-rich phase; a and b are the adjusted parameters. The linearity of the Othmer-Tobias plot indicates the degree of consistency of the data. This procedure has been used for many authors [15-18]. The Othmer-Tobias plots for the system heptane(x_1) + toluene(x_2) + [MMim][MeSO₄](x_3) at 318.15 K is shown in the Figure 5. The regression coefficient is near 1, which indicates a good degree of consistency of the experimental data.

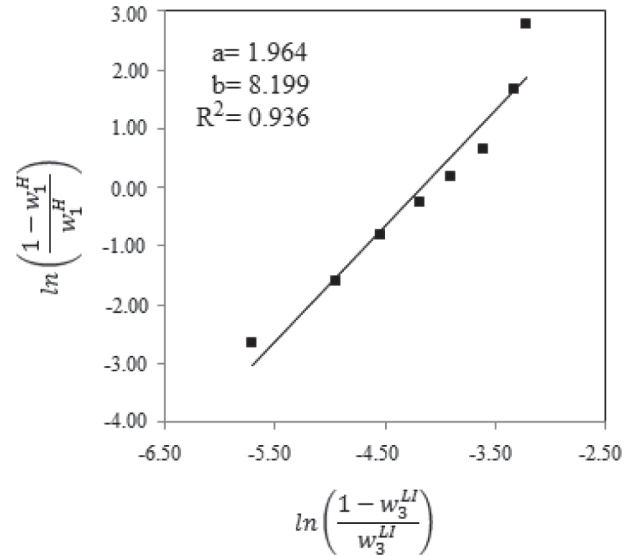


Figure 5. Othmer-Tobias plot for system heptane(x_1) + toluene(x_2) + [MMim][MeSO₄](x_3), at 318.15 K. Adjusted parameters and regression coefficient.

Thermodynamic correlation. The experimental data obtained in this work were used to test the ability of NRTL [29] and UNIQUAC [30] models to describe the behavior of LLE of ternary systems containing ionic liquids.

The UNIQUAC model for the excess Gibbs energy, g^E , consists in two parts: a combinatorial, entropic contribution, which accounts the molecules size and shape effects, and a residual, enthalpic contribution, that accounts for the energy interaction effects [35, 36]. The equation has the form:

$$\frac{g^E}{RT} = \frac{g^{Ecomb} + g^{Eres}}{RT} \quad (5)$$

$$\frac{g^{Ecomb}}{RT} = \sum_i^c x_i \ln \frac{\phi_i}{x_i} + 5 \sum_i^c q_i x_i \ln \frac{\theta_i}{\phi_i} \quad (6)$$

$$\frac{g^{Eres}}{RT} = - \sum_i^c q_i x_i \ln \left(\sum_j^c \theta_j \tau_{ij} \right) \quad (7)$$

Where the volume fraction and the area fractions are given by:

$$\varnothing_i = \frac{x_i r_i}{\sum x_j r_j} \quad (8)$$

$$\theta_i = \frac{x_i q_i}{\sum x_j q_j} \quad (9)$$

$$\tau_{ij} = \exp\left(-\frac{a_{ij}}{T}\right) = \exp\left(-\frac{\Delta u_{ij}}{RT}\right) = \exp\left(-\frac{(u_{ij} - u_{ii})}{RT}\right) \text{ con } \tau_{ji} \neq \tau_{ij} \quad (10)$$

The parameters r and q are molecular structure parameters of the pure component (van der Waals parameters), representing the volume and the surface area. For each binary mixture there are two adjustable parameters, τ_{ij} and τ_{ji} , here Δu_{ij} and Δu_{ji} are characteristics of the energy of the i - j interactions and are weakly dependents of temperature.

The required van der Waals parameters of the UNIQUAC model, r_i and q_i , were taken from literature [35, 36] and they are presented in Table 3.

Table 3. Structural parameters for the UNIQUAC equation.

Component	r_i	q_i
heptane	5.174	4.396
toluene	3.923	2.968
[MMim][MeSO ₄]	6.903	5.501

The NRTL model is based on local composition and is applicable to partially miscible systems. The equations of NRTL for the activity coefficient in multicomponent systems are:

$$\ln \gamma_i = \frac{\sum_j \tau_{ji} G_{ji} x_j}{\sum_k G_{ki} x_k} + \sum_j \frac{x_j G_{ij}}{\sum_k G_{kj} x_k} \left[\tau_{ij} - \frac{\sum_k x_k \tau_{kj} G_{ki}}{\sum_k G_{kj} x_k} \right] \quad (11)$$

$$\tau_{ij} = \frac{\Delta g_{ij}}{RT} \quad (\tau_{ij} \neq \tau_{ji}) \quad (12)$$

$$G_{ij} = \exp(-\alpha_{ij} \tau_{ij}) \quad (\alpha_{ij} = \alpha_{ji}) \quad (13)$$

This models has three adjustable parameters for each binary pair (τ_{ij} , τ_{ji} and α_{ij}). The parameters τ_{ij} and τ_{ji} are related to the characteristic energy of interaction between the molecules of type i and j , while the parameter α_{ij} is related to the nonrandomness of the mixture. Following a common procedure, the nonrandomness parameter in the NRTL equation, α_{ij} , was set to different values between 0.05 and 0.2 during calculations, and the best results were achieved for the values presented in Table 4.

Parameter estimation: The estimation of the parameters of interaction Δu_{ij} and Δu_{ji} of UNIQUAC and Δg_{ij} and Δg_{ji} of NRTL is based on the simplex method [37] and consist in the minimization of a concentration-base objective function, F [38]:

$$F = \sum_{k=1}^D \sum_{j=1}^M \sum_{i=1}^{N-1} \left\{ \left(x_{ijk}^{I, \text{exp}} - x_{ijk}^{I, \text{cal}} \right)^2 + \left(x_{ijk}^{II, \text{exp}} - x_{ijk}^{II, \text{cal}} \right)^2 \right\} \quad (14)$$

Here, D is number of data sets, N and M are the number of components and tie-lines in each data set; the superscripts **I** and **II** refer to the two liquid phases in equilibrium, while superscripts “exp” and “cal” refer to the experimental and calculated values of the liquid phase concentration.

The fitting parameters of the correlation models, together with the values of the root-mean-square deviation of the composition, σ_x , are listed in Table 4. This deviation gives an idea of the quality of the correlation and they were calculated as follows:

$$\sigma_x = 100 \left[\sum_k^n \sum_{i=1}^3 \sum_j^2 \frac{\left[x_{ijk}^{\text{exp}} - x_{ijk}^{\text{cal}} \right]^2}{6n} \right]^{1/2} \quad (15)$$

Table 4. Values of the NRTL and UNIQUAC binary interactions parameters and deviations for LLE data of ternary system at T=318.15 K.

i - j		NRTL				UNIQUAC		
		$g_{ij} - g_{ji}$, kJ mol ⁻¹	$g_{ji} - g_{ii}$, kJ mol ⁻¹	α_{ij}	σ_x	Δu_{ij} , kJ mol ⁻¹	Δu_{ji} , kJ mol ⁻¹	σ_x
heptane(x ₁) + toluene(x ₂) + [MMim][MeSO ₄](x ₃)								
1 - 2	2 - 1	8.212	-4.747			-1.735	2.171	
1 - 3	3 - 1	140.589	25.924	0.20	0.065	5.162	1.631	0.097
2 - 3	3 - 2	19.732	2.750			105.253	-0.293	

Where x_{ijk}^{exp} is the fraction molar of component i in the phase j and in the tie-line k , x_{ijk}^{cal} is the fraction molar calculated with NRTL or UNIQUAC and n is the number of tie-lines.

After the inspection of the values of σ_x presented in Table 4, it can be inferred that the NRTL and UNIQUAC models gives slightly lower deviations and although both models fit satisfactorily the experimental data. Table 5 shows the composition of the phases calculated from NRTL and UNIQUAC models for ternary system heptane (x₁) + toluene (x₂) + [MMim][MeSO₄](x₃) at 318.15 K.

Error of the distribution coefficient, $\Delta\beta$, is calculated with the following expression:

$$\Delta\beta = 100 \left(\frac{1}{M} \sum_{k=1}^M \left(\frac{\beta_k - \beta_k^{cal}}{\beta_k} \right)^2 \right)^{1/2} \quad (16)$$

where M is the number of tie-lines, β_k is experimental distribution coefficient (see Table 2) and β_k^{cal} is distribution coefficient calculated with NRTL and UNIQUAC models, values of $\Delta\beta$ are presented in Table 5. In Figures 6 and 7 the experimental tie-lines and those obtained from the correlation with NRTL and UNIQUAC models are plotted for system heptane (x₁) + toluene (x₂) + [MMim][MeSO₄](x₃) at 318.15 K, and the goodness of the correlation can be visually confirmed.

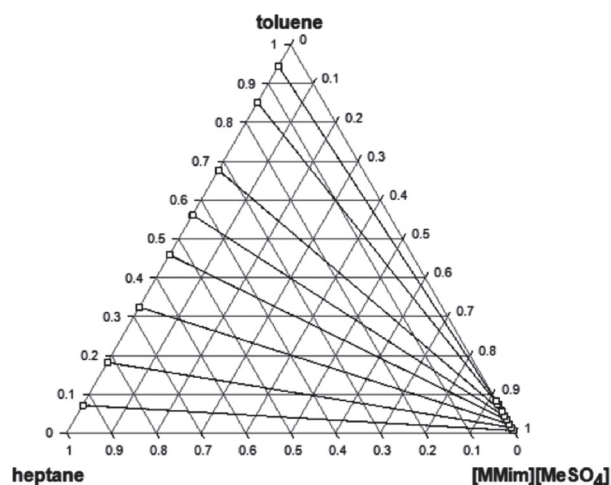


Figure 6. Ternary phase diagram of heptane (x₁) + toluene (x₂) + [MMim][MeSO₄](x₃) at 318.15 K. ■: experimental data, □: calculated data from NRTL model with $\alpha_{ij} = 0.20$.

Conclusions

In this work, (liquid+liquid) equilibria for the ternary system heptane (x₁) + toluene (x₂) + [MMim][MeSO₄](x₃) was determined at T = 318.15 K and atmospheric pressure. Selectivity and distribution coefficient were calculated from experimental data. The selectivity was higher than those of sulfolane on the whole range of compositions. However, the distribution coefficients of toluene were lower. It can be concluded that [MMim][MeSO₄] can be used to separate toluene from heptane since the

selectivity values are higher than unity, but taken into account that distribution coefficient values are less than unity, a high number of stages would be necessary. Regarding the planning for a process, it is important to consider that ionic liquids are easily recovered.

The consistency of the LLE data was proved by the linearity of Othmer-Tobias equation and the NRTL and UNIQUAC models satisfactorily correlate the experimental LLE data.

Acknowledgements

The financial support the University of Pamplona (project 191-2010) is gratefully acknowledged.

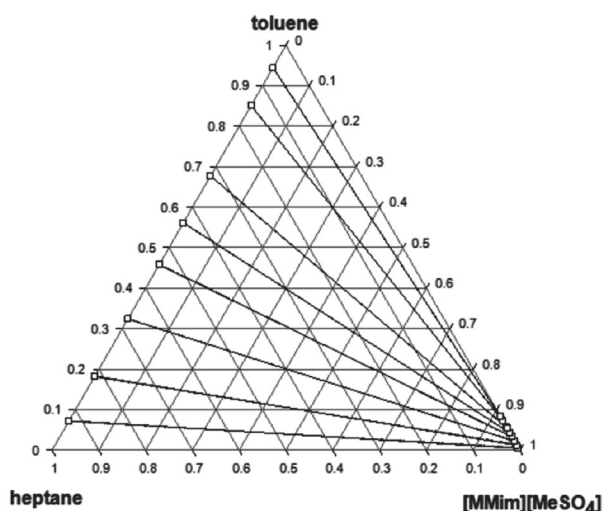


Figure 7. Ternary phase diagram of heptane(x_1) + toluene(x_2) + [MMim][MeSO₄](x_3) at 318.15 K. ■: experimental data, □: calculated data from UNIQUAC model.

Table 5. Composition of the phases calculated from NRTL and UNIQUAC models for ternary system heptane (x_1) + toluene (x_2) + [MMim][MeSO₄](x_3) at 318.15 K.

Hydrocarbon-rich phase			Ionic liquid-rich phase			β_k^{cal}	$\Delta\beta$
x_1^{cal}	x_2^{cal}	x_3^{cal}	x_1^{cal}	x_2^{cal}	x_3^{cal}		
heptane(x_1) + toluene(x_2) + [MMim][MeSO ₄](x_3) with NRTL model ($\alpha_{ij} = 0.20$)							
0.9287	0.0711	0.0002	0.0001	0.0065	0.9934	0.091	3.58
0.8179	0.1819	0.0002	0.0002	0.0138	0.9860	0.076	
0.6757	0.3239	0.0004	0.0004	0.0229	0.9767	0.071	
0.5414	0.4583	0.0003	0.0007	0.0333	0.9660	0.073	
0.4381	0.5616	0.0003	0.0010	0.0430	0.9560	0.076	
0.3220	0.6777	0.0003	0.0014	0.0555	0.9431	0.082	
0.1480	0.8518	0.0002	0.0014	0.0747	0.9239	0.088	
0.0549	0.9449	0.0002	0.0007	0.0830	0.9163	0.088	
heptane(x_1) + toluene(x_2) + [MMim][MeSO ₄](x_3) with UNIQUAC model							
0.9273	0.0727	0.0000	0.0015	0.0048	0.9937	0.066	10.04
0.8169	0.1831	0.0000	0.0013	0.0125	0.9862	0.068	
0.6760	0.3240	0.0000	0.0011	0.0233	0.9756	0.072	
0.5421	0.4579	0.0000	0.0009	0.0344	0.9647	0.075	
0.4388	0.5612	0.0000	0.0007	0.0438	0.9555	0.078	
0.3226	0.6774	0.0000	0.0005	0.0552	0.9443	0.081	
0.1488	0.8512	0.0000	0.0002	0.0733	0.9265	0.086	
0.0554	0.9446	0.0000	0.0001	0.0831	0.9168	0.088	

References

1. Arce, A., Earle, M.J., Rodríguez, H., Seddon, K.R., Soto, A. (2008). 1-Ethyl-3-methylimidazolium bis{(trifluoromethyl)sulfonyl} amide as solvent for the separation of aromatic and aliphatic hydrocarbons by extraction – extension to C7- and C8-fractions, *Green Chem.*, 10, 1294–1300.
2. Yorulmaz, Y., Karpuzcu, F. (1985). Sulpholane versus diethylene glycol in recovery of aromatics. *Chem. Eng. Res. Des.*, 63, 184–190.
3. Krishna, R., Goswami, A.N., Nanoti, S.M., Rawat, B.S., Khana, M.K., Dobhal, J. (1987). Extraction of aromatics from 63-69 °C naphtha fraction for food grade hexane production using sulfolane and NMP as solvents, *Ind. J. Technol.*, 25, 602–606.
4. Wang, W., Gou, Z.M., Zhu, S.L. (1998). Liquid-liquid equilibria for aromatics extraction systems with tetraethylene glycol, *J. Chem. Eng. Data*, 43, 81–83.
5. Chen, J., Duan, L-P, Mi, J-G., Feio, W-Y., Li, Z-C. (2000). Liquid-liquid equilibria of multi-component systems including n-hexane, n-octane, benzene, toluene, xylene and sulfolane at 298.15 K and atmospheric pressure, *Fluid Phase Equilib.*, 173, 109–119.
6. Choi, Y.J., Cho, K.W., Cho, B.W., Yeo, Y-K. (2002). Optimization of the sulfolane extraction plant based on modeling and simulation, *Ind. Eng. Chem. Res.*, 41, 5504–5509.
7. Selvan, M.S., McKinley, M.D., Dubois, R.H., Atwood, J.L. (2000). Liquid-liquid equilibria for toluene + heptane + 1-ethyl-3-methylimidazolium triiodide and toluene + heptane + 1-butyl-3-methylimidazolium triiodide, *J. Chem. Eng. Data*, 45, 841–845.
8. Letcher, T.M., Deenadayalu, N. (2003). Ternary liquid-liquid equilibria for mixture of 1-methyl-3-octyl-imidazolium chloride+benzene+an alkane at 298.2 K and 1 atm, *J. Chem. Thermodyn.*, 35(1), 67–76.
9. Letcher, T.M., Reddy, P. (2005). Ternary (liquid+liquid) equilibria for mixtures of 1-hexyl-3-methylimidazolium (tetrafluoroborate or hexafluoroborate)+benzene+an alkane at 298.2 K and p=0.1 MPa. *J. Chem. Thermodyn.*, 37, 415–421.
10. Meindersma, G.W., Podt, A.J.G., de Haan, A.B. (2006). Ternary liquid-liquid equilibria for mixtures of toluene + n-heptane + an ionic liquid, *Fluid Phase Equilib.*, 247, 158–168.
11. Deenadayalu, N., Ngcongco, K.C., Letcher, T.M., Ramjugernath, D. J. (2006). Liquid-liquid equilibria for ternary mixtures (an ionic liquid + benzene + hexane + hexadecane) at T=298.2 K and atmospheric pressure, *J. Chem. Eng. Data*, 51, 988–991.
12. Domanska, U., Pobudkowska, A., Królikowski, M. (2007). Separation of aromatic hydrocarbons from alkanes using ammonium ionic liquid C₂N⁺Tf₂N⁻ at T=298.15 K, *Fluid Phase Equilib.*, 259, 173–179.
13. Abu-Eishah, S.I., Dowaidar, A.M. (2008). Liquid-liquid equilibrium of ternary systems of cyclohexane + (benzene, + toluene, + ethylbenzene, or + o-xylene) + 4-methyl-N-butyl pyridinium tetrafluoroborate ionic liquid at 303.15 K, *J. Chem. Eng. Data*, 53, 1708–1712.
14. Wang, R., Wang, J., Meng, H., Li, C., Wang, Z. (2008). Liquid-liquid equilibria for benzene + cyclohexane + 1-methyl-3-methylimidazolium dimethylphosphate or + 1-ethyl-3-methylimidazolium diethylphosphate, *J. Chem. Eng. Data*, 53, 1159–1162.
15. Maduro, R.M., Aznar, M. (2008). Liquid-liquid equilibrium of ternary systems 1-butyl-3-methylimidazolium hexafluorophosphate + aromatic + aliphatic, *Fluid Phase Equilib.*, 265, 129–138.
16. Garcia, J., Fernández, A., Torrecilla, J.S., Oliet, M., Rodríguez, F. (2009). Liquid-liquid equilibria for {hexane+benzene+1-ethyl-3-methylimidazolium ethylsulfate} at (298.2, 313.2 and 328.2) K, *Fluid Phase Equilib.*, 282, 117–120.
17. González, E.J., Calvar, N., González, B., Domínguez, Á. (2010). Liquid extraction of benzene from its mixtures using 1-ethyl-3-methylimidazolium ethylsulfate as a Solvent. *J. Chem. Eng. Data*, 55, 4931–4936.
18. González, E.J., Calvar, N., Gómez, E., Domínguez, Á. (2010). Separation of benzene from linear alkanes (C₆-C₉) using 1-ethyl-3-methylimi-

- dazolium ethylsulfate at $T=298.15$ K, *J. Chem. Eng. Data*, 55, 3422–3427.
19. González, E.J., Calvar, N., Gómez, E., Domínguez, Á. (2011). Application of [EMIm][ESO₄] ionic liquid as solvent in the extraction of toluene from cycloalkanes: Study of liquid-liquid equilibria at $T=298.15$ K, *Fluid Phase Equilib.*, 303, 174–179.
 20. González, E.J., González, B., Calvar, N., Domínguez, Á. (2011). Study of [EMIm][ESO₄] ionic liquid as solvent in the liquid-liquid extraction of xylenes from their mixtures with hexane, *Fluid Phase Equilib.*, 305, 227–232.
 21. González, E.J., Calvar, N., Domínguez, I., Domínguez, Á. (2011). Extraction of toluene from aliphatic compounds using an ionic liquid as solvent: influence of the alkane on the (liquid+liquid) equilibrium, *J. Chem. Thermodyn.*, 43, 562–568.
 22. García, S., Larriba, M., García, J., Torrecilla, J.S., Rodríguez, F. (2012). Alkylsulfate-based ionic liquids in the liquid-liquid extraction of aromatic hydrocarbons, *J. Chem. Thermodyn.*, 45, 68–74.
 23. Seoane, R.G., Gómez, E., González, E.J., Domínguez, Á. (2012). (Liquid+liquid) equilibria for the ternary mixtures (alkane+toluene+ionic liquid) at $T=298.15$ K: Influence of the anion on the phase equilibria. *J. Chem. Thermodyn.*, 47, 402–407.
 24. Corderi, S., Calvar, N., Gómez, E., Domínguez, Á. (2012). Capacity of ionic liquids [EMIm][NTf₂] and [EMpy][NTf₂] for extraction of toluene from mixtures with alkanes: Comparative study of the effect of the cation, *Fluid Phase Equilib.*, 315, 46–52.
 25. Pereiro, A.B., Deive, F.J., Esperança, J.M.S.S., Rodríguez, A. (2010). Alkylsulfate-based ionic liquids to separate azeotropic mixtures, *Fluid Phase Equilib.*, 291, 13–17.
 26. Meindersma, G.W., de Haan, A.B. (2008). Conceptual process design for aromatic/aliphatic separation with ionic liquids, *Chem. Eng. Res. Des.*, 86, 745–752.
 27. Martínez-Reina, M., Amado-González, E., Muñoz-Muñoz, Y.M., (2012). Study of liquid-liquid equilibrium of benzene + (hexane, heptane and cyclohexane) with the ionic liquid 1-ethyl-3-methylimidazolium ethylsulfate at 308.15 K, *Rev. Colomb. Quím.*, 41(1), 89–107.
 28. Othmer, D.F., Tobias, P.E. (1942). Tie Line Correlation, *Ind. Eng. Chem.*, 34(6), 693–696.
 29. Renon, H., Prausnitz, J.M. (1968). Local Composition in Thermodynamics Excess Function for Liquid Mixtures, *AIChE J.*, 14, 135–144.
 30. Abrams, D.S., Prausnitz, J.M. (1975). Statistical thermodynamics of liquid mixtures: a new expression for the excess Gibbs energy of partly or completely substances, *AIChE J.*, 21, 116–128.
 31. Pereiro, A.B., Rodríguez, A. (2007). Ternary (liquid+liquid) equilibria of the azeotrope (ethyl acetate + 2-propanol) with different ionic liquids at $T=298.15$ K, *J. Chem. Thermodyn.*, 39, 1608–1613.
 32. Calvar, N., Gómez, E., González, B., Domínguez, Á. (2009). Experimental densities, refractive indices, and speeds of sound of 12 binary mixtures containing alkanes and aromatic compound at $T=313.15$ K, *J. Chem. Thermodyn.*, 41, 939–944.
 33. Morávková, L., Linek, J. (2008). Excess molar volumes of (octane + benzene, or toluene, or 1,3-xylene, or 1,3,5-trimethylbenzene) at temperatures between (298.15 and 328.15) K, *J. Chem. Thermodyn.*, 40, 671–676.
 34. Alonso, L., Arce, A., Francisco, M., Soto, A. (2008). (Liquid+Liquid) equilibria of [C8mim][NTf₂] ionic liquid with sulfur-component and hydrocarbons, *J. Chem. Thermodyn.*, 40, 265–270.
 35. Santiago, R.S., Santos, G.R., Aznar, M. (2009). UNIQUAC correlation of liquid-liquid equilibrium in systems involving ionic liquids: The DFT-PCM approach, *Fluid Phase Equilib.*, 278, 54–61.
 36. Santiago, R.S., Santos, G.R., Aznar, M. (2010). UNIQUAC correlation of liquid-liquid equilibrium in systems involving ionic liquids: The DFT-PCM approach. Part II, *Fluid Phase Equilib.*, 293, 66–72.
 37. Nelder, J.A., Mead, R. (1965). A Simplex Method for Function Minimization, *Comput. J.*, 7, 308–313.
 38. Sørensen, J.M., Magnussen, T., Rasmussen, P., Fredenslund, A. (1979). Liquid-Liquid Equilibrium data: Their retrieval, correlation and prediction part II: Correlation, *Fluid Phase Equilib.*, 3, 47–82.