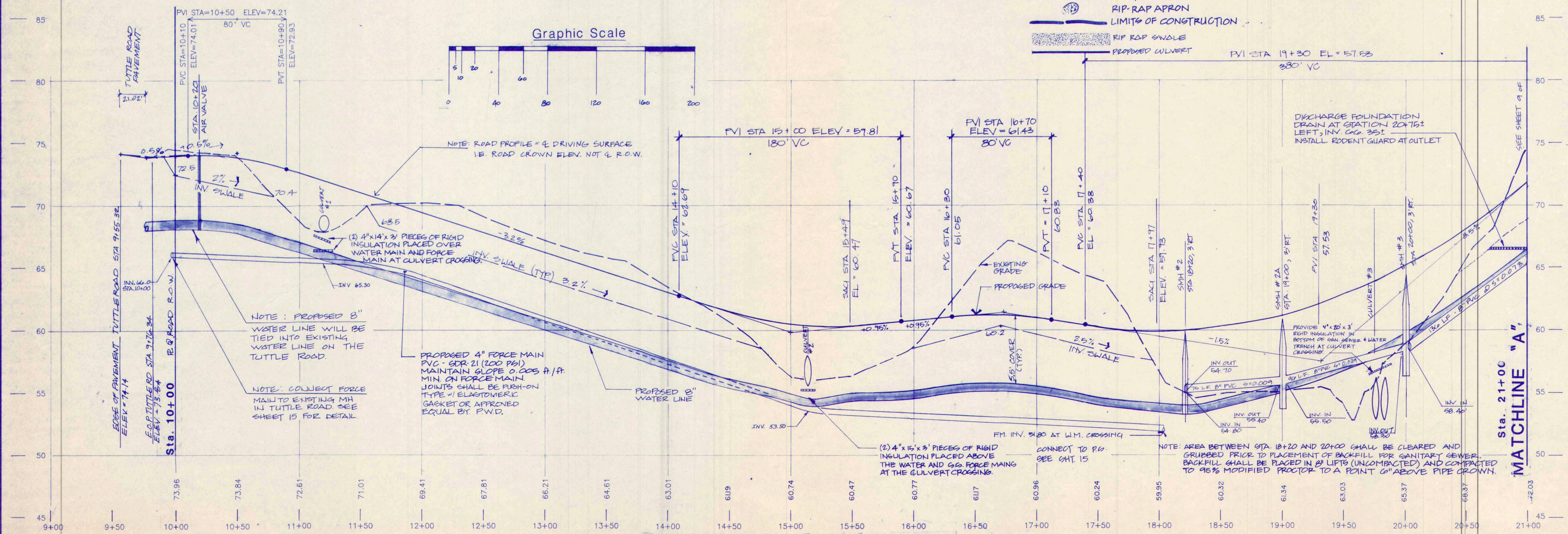


Crossing Brook Road - Plan View
 Typical Road Section "A" STA 9+77 to 21+00
 1" = 40'

NOTE:
 SEE SHEET 13 OF 15 FOR GENERAL NOTES



See Sheet 5 For Legend
 See Sheet 12 & 13 For Details

JJC
 LAND USE CONSULTANTS
 100 Main Street
 Portland, Maine 04101
 Phone: 603-772-8982
 Fax: 603-772-8983

STATE OF MAINE
 DAVID A. KAMILA
 3197
 REGISTERED PROFESSIONAL ENGINEER

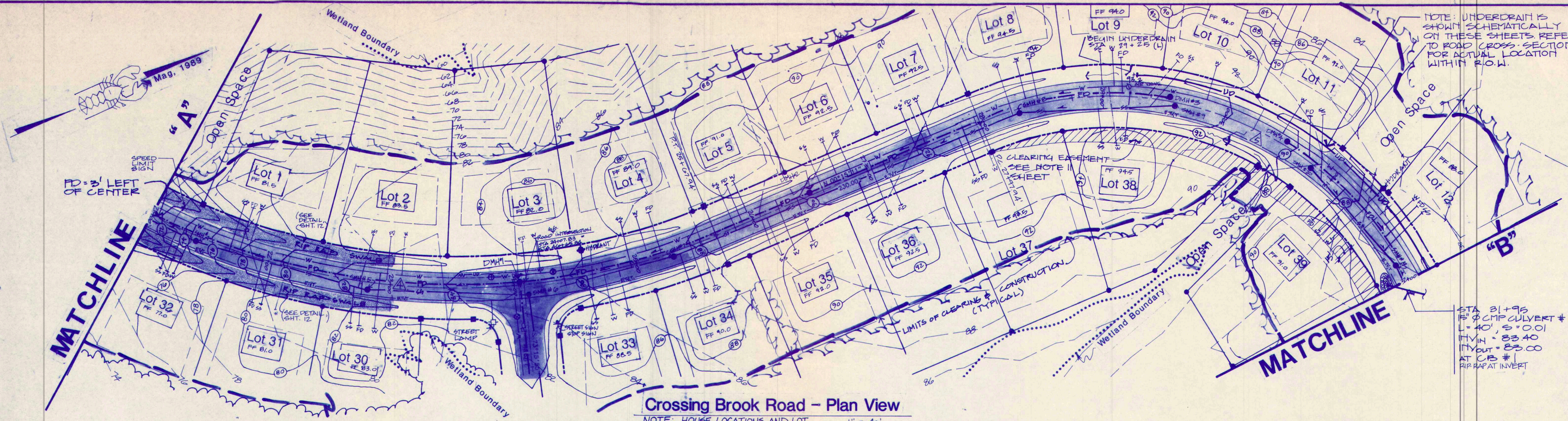
SMALL'S BROOK CROSSING
 For: CASCO PARTNERS INC.
 37 Forestside Drive Cumberland, Maine 04110

Revision	Date
1	12-17-97
2	12-17-97
3	12-17-97
4	12-17-97
5	12-17-97
6	12-17-97
7	12-17-97
8	12-17-97
9	12-17-97
10	12-17-97
11	12-17-97
12	12-17-97
13	12-17-97
14	12-17-97
15	12-17-97
16	12-17-97
17	12-17-97
18	12-17-97
19	12-17-97
20	12-17-97
21	12-17-97
22	12-17-97
23	12-17-97
24	12-17-97
25	12-17-97
26	12-17-97
27	12-17-97
28	12-17-97
29	12-17-97
30	12-17-97
31	12-17-97
32	12-17-97
33	12-17-97
34	12-17-97
35	12-17-97
36	12-17-97
37	12-17-97
38	12-17-97
39	12-17-97
40	12-17-97
41	12-17-97
42	12-17-97
43	12-17-97
44	12-17-97
45	12-17-97
46	12-17-97
47	12-17-97
48	12-17-97
49	12-17-97
50	12-17-97
51	12-17-97
52	12-17-97
53	12-17-97
54	12-17-97
55	12-17-97
56	12-17-97
57	12-17-97
58	12-17-97
59	12-17-97
60	12-17-97
61	12-17-97
62	12-17-97
63	12-17-97
64	12-17-97
65	12-17-97
66	12-17-97
67	12-17-97
68	12-17-97
69	12-17-97
70	12-17-97
71	12-17-97
72	12-17-97
73	12-17-97
74	12-17-97
75	12-17-97
76	12-17-97
77	12-17-97
78	12-17-97
79	12-17-97
80	12-17-97
81	12-17-97
82	12-17-97
83	12-17-97
84	12-17-97
85	12-17-97
86	12-17-97
87	12-17-97
88	12-17-97
89	12-17-97
90	12-17-97
91	12-17-97
92	12-17-97
93	12-17-97
94	12-17-97
95	12-17-97
96	12-17-97
97	12-17-97
98	12-17-97
99	12-17-97
100	12-17-97

ROAD PLAN / PROFILE

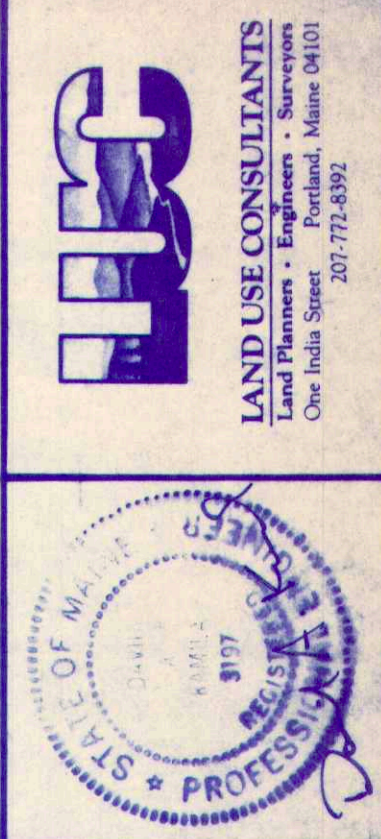
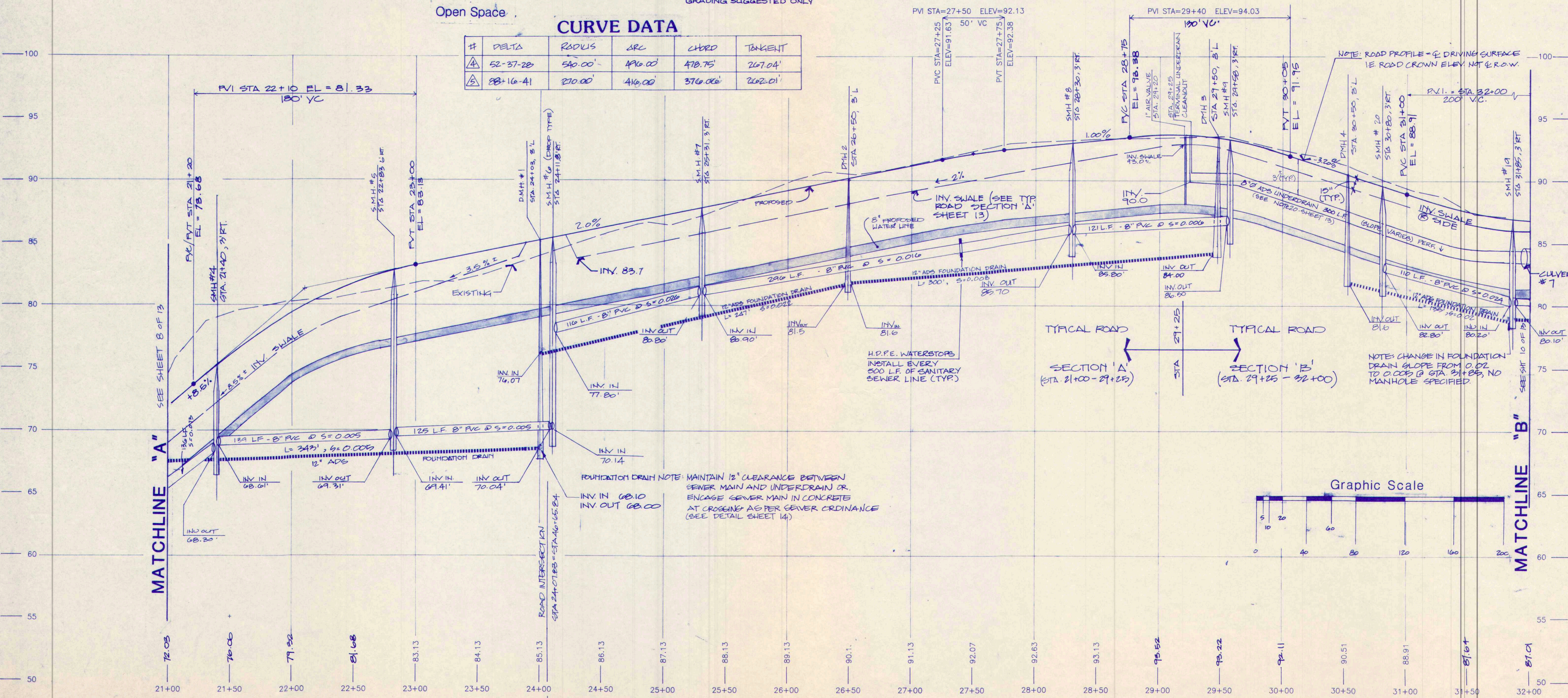
Job No. 2040
 Sheet

8 of 15



CURVE DATA

#	DELTA	RADIUS	ARC	CHORD	TANGENT
△	52-37-28	540.00'	496.00'	478.75'	267.04'
△	88-16-41	270.00'	416.00'	376.00'	262.01'



SMALL'S BROOK CROSSING

For: CASCO PARTNERS INC.
37 Foreside Drive Cumberland, Maine 04110

Date	Revision
2-28-90	LOT #S, LINES AND FRONT SETBACKS
4-14-90	ADDED LIMITS OF CLEARANCE CALL STATIONS
6-14-90	REVISIONS AS PER TOWN ENGINEER
8-17-90	ED STOPS - SMH #S REV.
7-27-91	ADD WATERSTOPS
8-24-91	REVISIONS PER TOWN ENGINEER
8-12-92	

ROAD PLAN / PROFILE

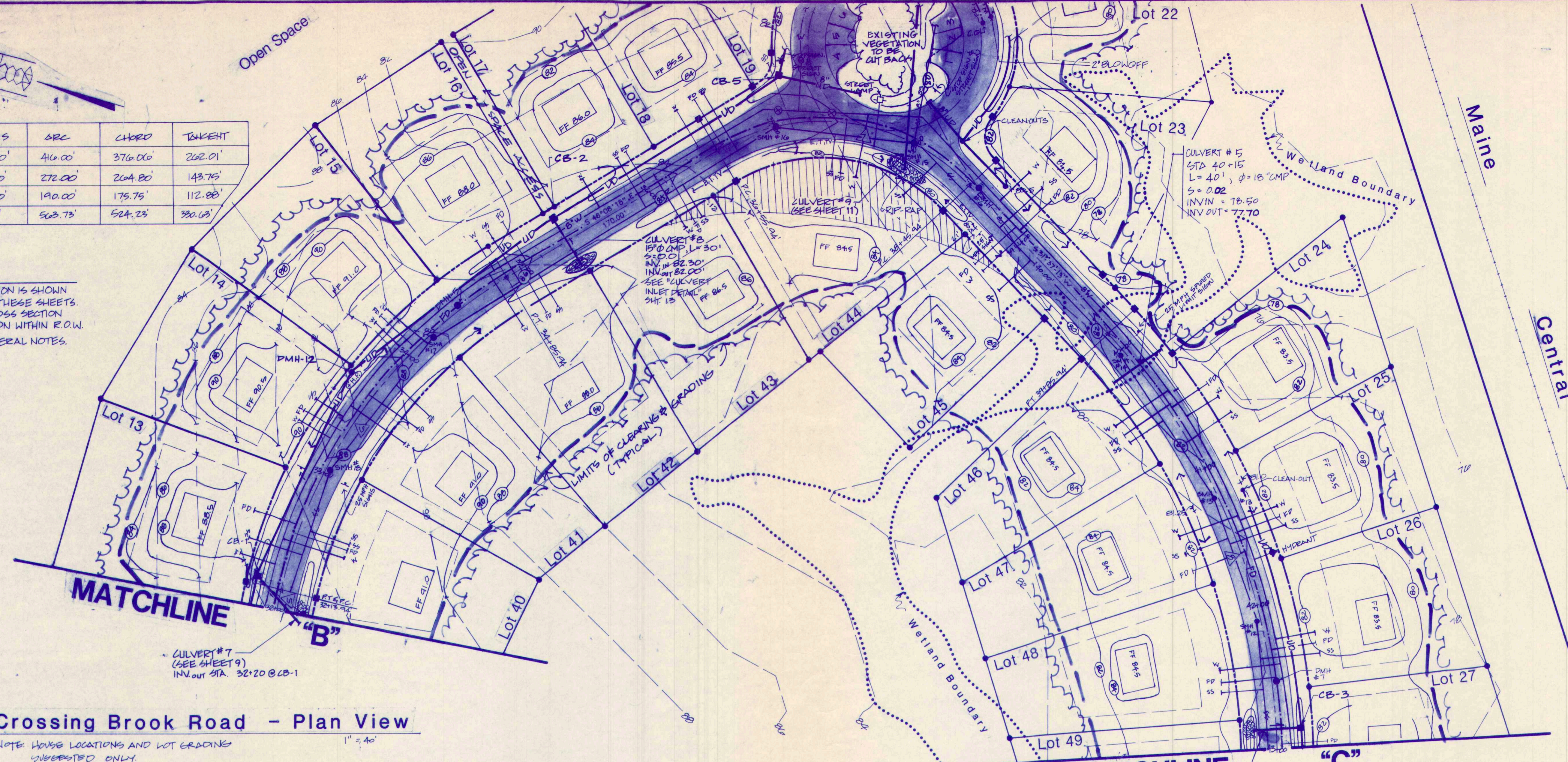
Designed: F.J.L.
Drawn: C.D., B.H.
Checked: B.H., F.J.L.
Scale: As shown
Date: Dec 28, 1989

Job No. 2040
Sheet

#	DELTA	RADIUS	ARC	CHORD	TANGENT
1	88-16-41	270.00'	416.00'	376.00'	262.01'
2	45-50-12	340.00'	272.00'	204.80'	143.75'
3	77-45-31	140.00'	190.00'	175.75'	112.88'
4	75-06-52	480.00'	563.73'	524.23'	330.03'

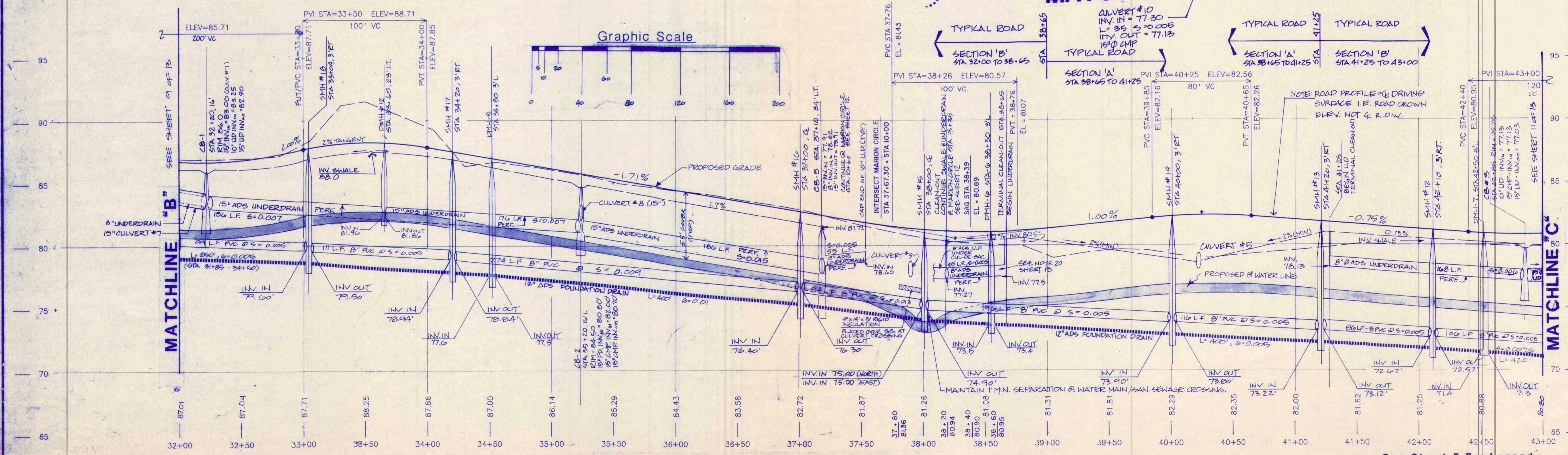
Notes

1. UNDERDRAIN LOCATION IS SHOWN SCHEMATICALLY ON THESE SHEETS. REFER TO ROAD CROSS SECTION FOR ACTUAL LOCATION WITHIN R.O.W.
2. SEE SHEET 13 FOR GENERAL NOTES.



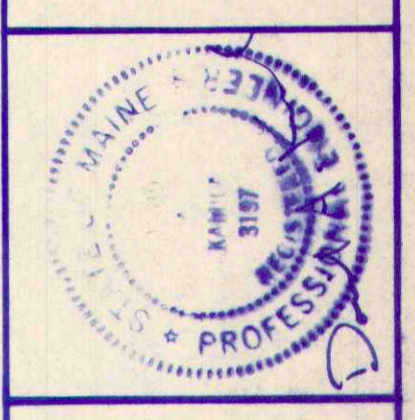
Crossing Brook Road - Plan View

NOTE: HOUSE LOCATIONS AND LOT GRADINGS SUGGESTED ONLY.



Crossing Brook Road - Profile

See Sheet 5 For Legend
See Sheet 12 & 13 For Details



SMALL'S BROOK CROSSING
For: CASCO PARTNER'S INC.
37 Foreside Drive Cumberland, Maine 04110

Revision	Date
LOT #5, GRADING, FRONT SETBACK, LOT LINES	2-27-90
ADDED WHITE & E. CASCO PARTNER'S INC.	3-6-90
REVISED PER TOWN ENGINEER	7-9-90
REVISED PER TOWN ENGINEER	8-14-90
REVISIONS AS PER TOWN ENGINEER	8-17-90
SIGN EXIST # 43-45, PD STOPS	8-17-90
FILED, MAINE, P.D., C.D., SIGNED, PER PLAN/DRIVER	8-24-91
MADE PD OWNER, MAINE, REVISIONS	8-24-91
ADDED INSULATION AT CULVERT #9	8-19-91
REVISIONS PER TOWN ENGINEER	8-12-92

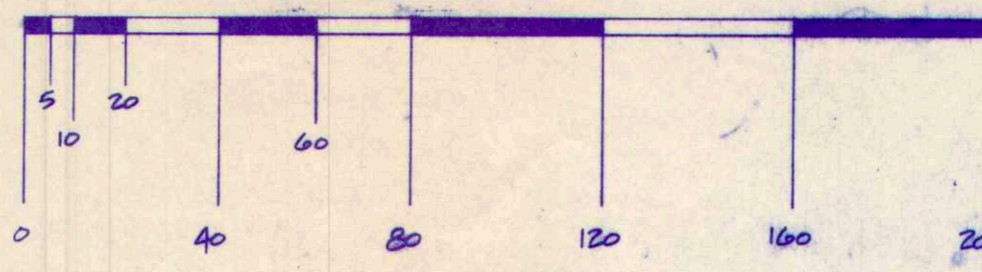
Designed	Checked	Scale	Date
F.J.L.	F.J.L. / J.B.H.	AS SHOWN	Dec 28, 1989

Job No. 2040
Sheet

CURVE DATA

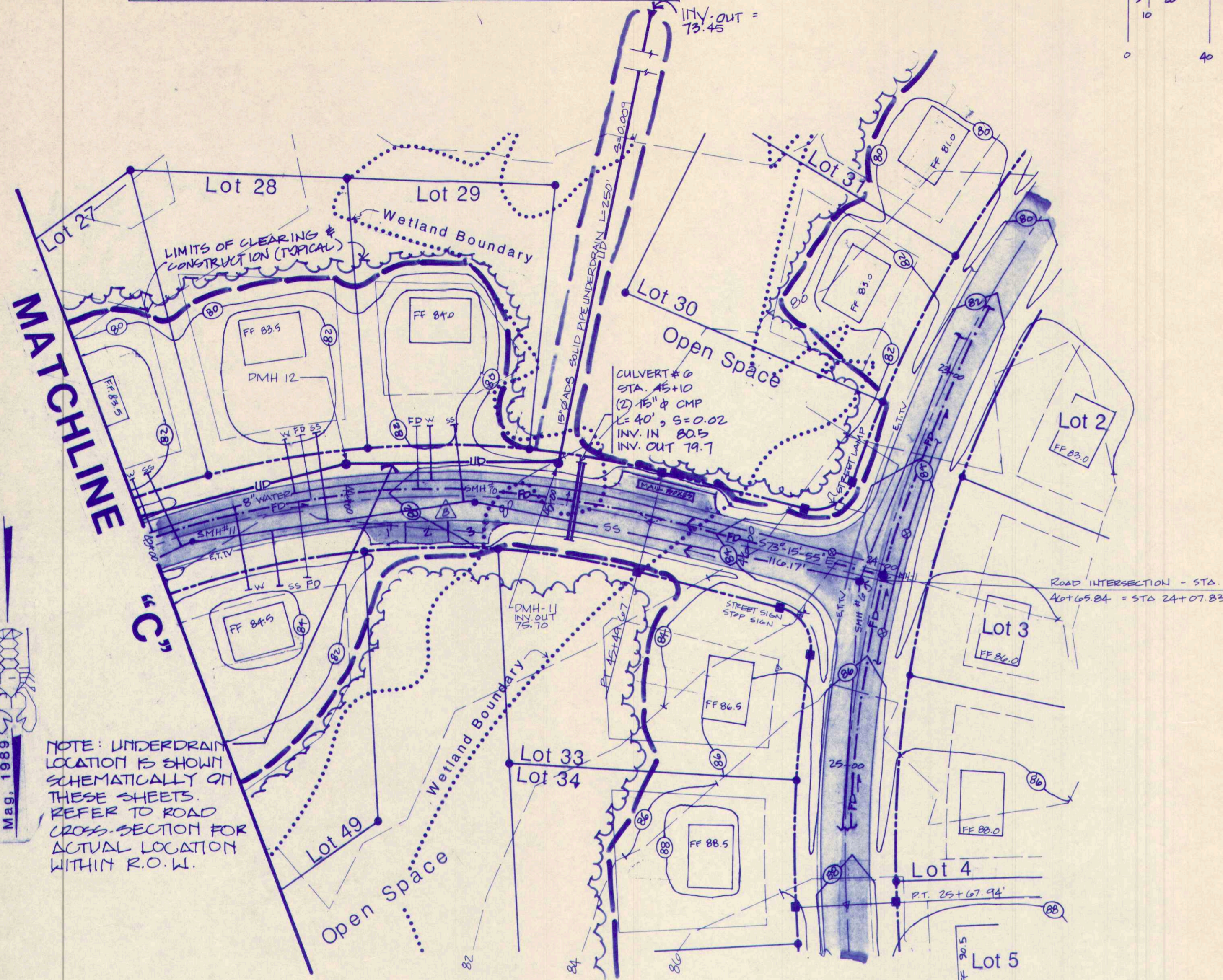
#	DELTA	RADIUS	ARC	CHRD	TANGENT
1	75-06-52	430.00	503.73'	524.22'	330.63'

Graphic Scale

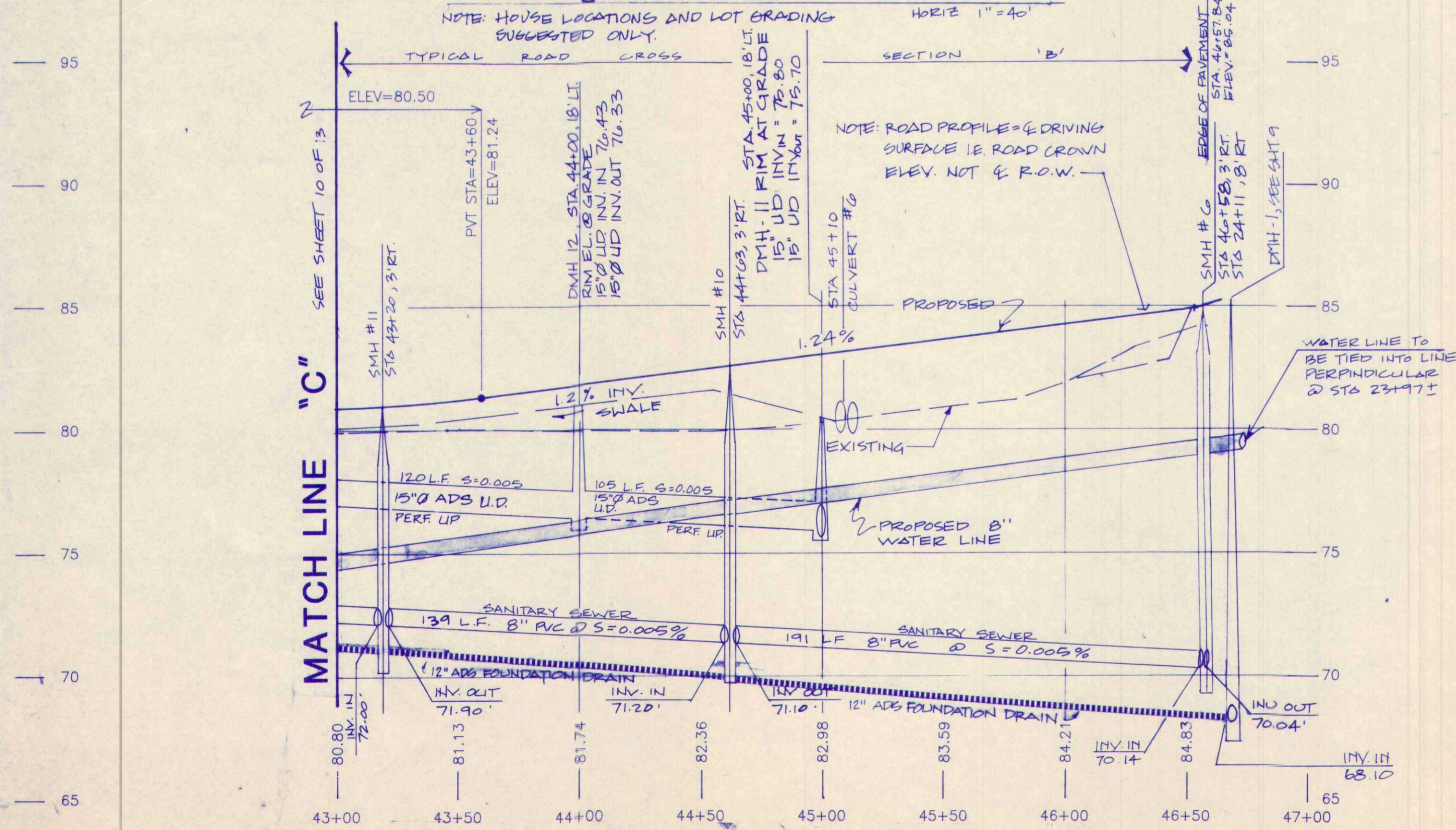


CURVE DATA

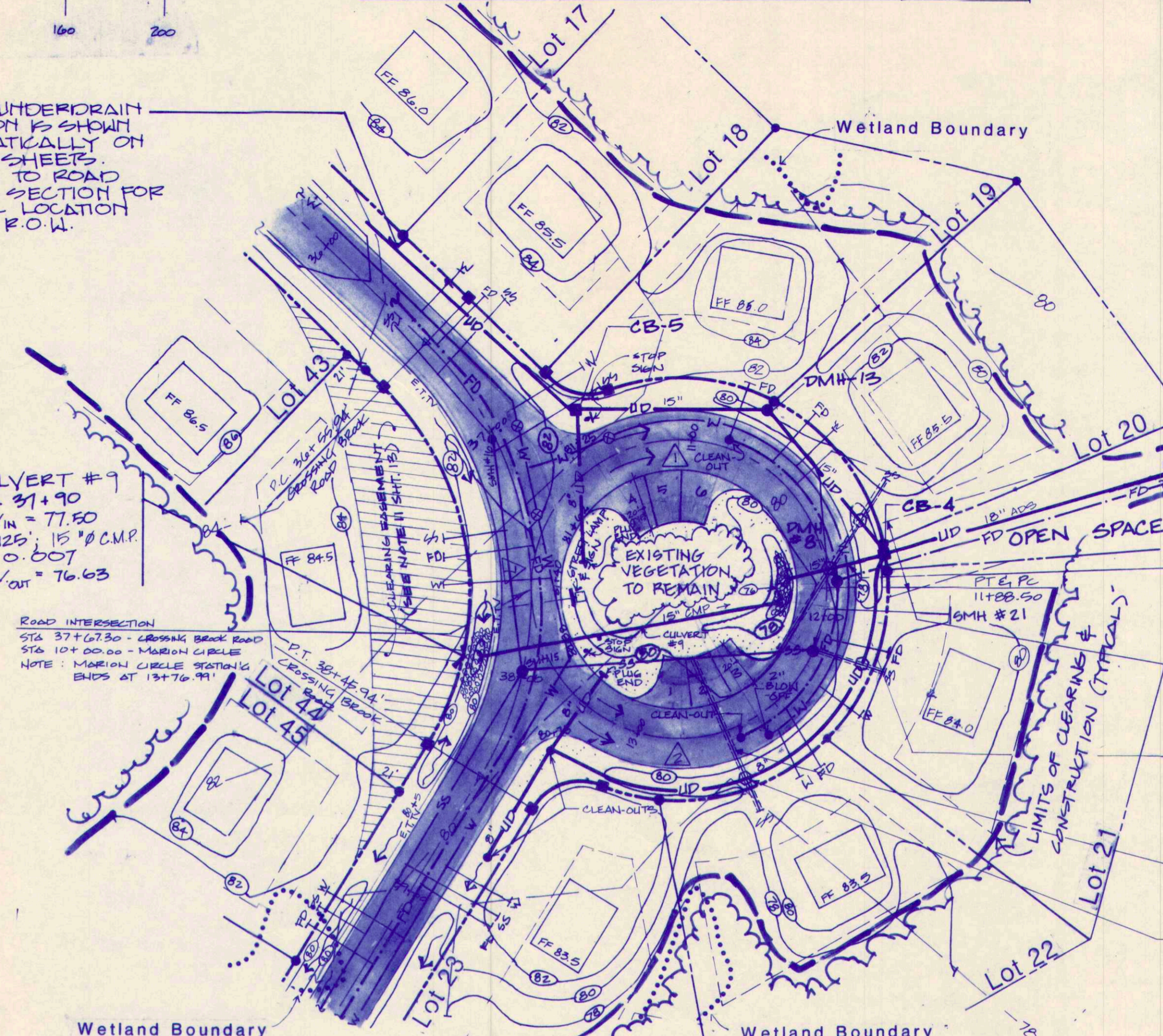
#	DELTA	RADIUS	ARC	CHRD	TANGENT
1	180-00-00	60.00	188.50'	120.00'	—
2	180-00-00	60.00	188.50'	120.00'	—



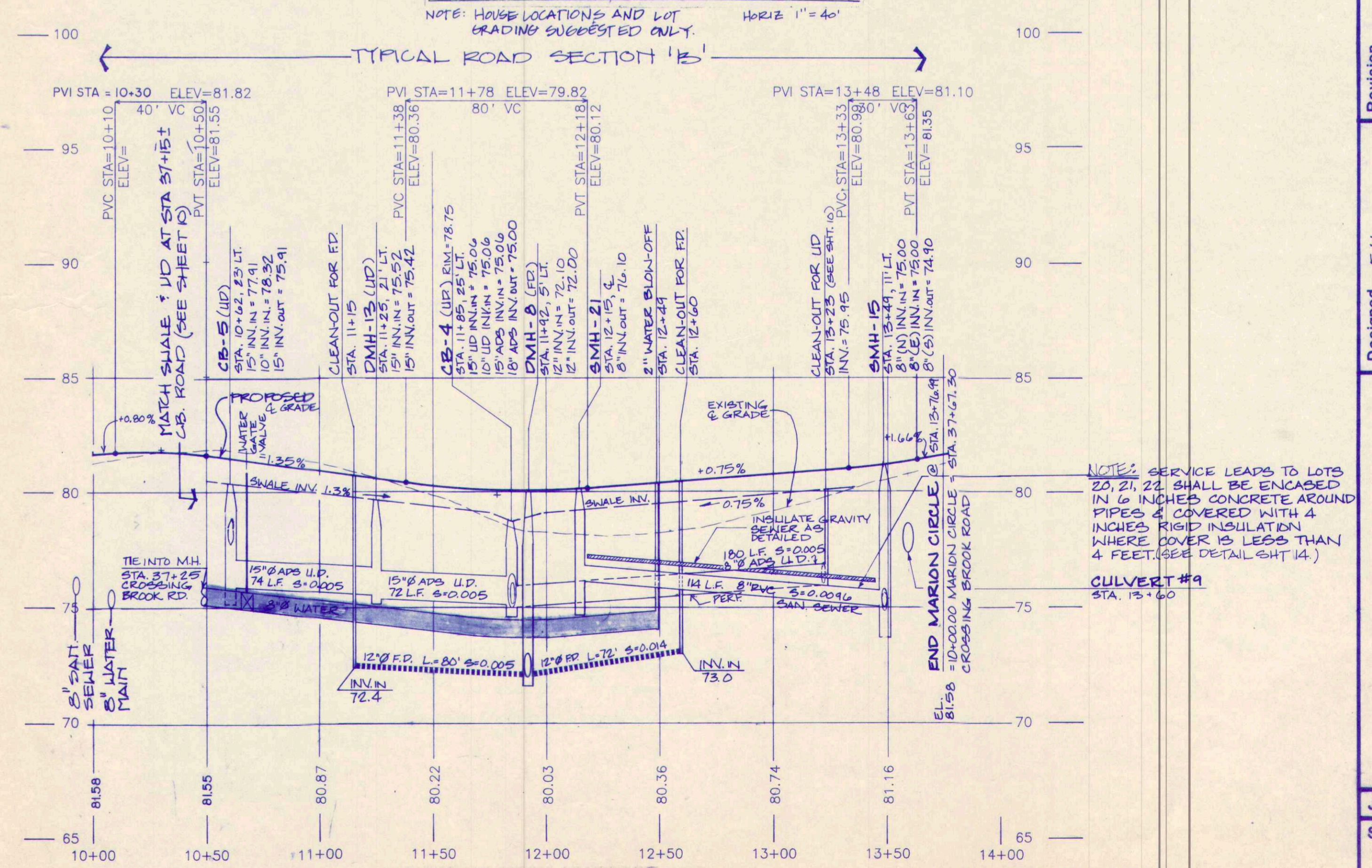
Crossing Brook Road - Profile



NOTE: UNDERDRAIN LOCATION IS SHOWN SCHEMATICALLY ON THESE SHEETS. REFER TO ROAD CROSS SECTION FOR ACTUAL LOCATION WITHIN R.O.W.

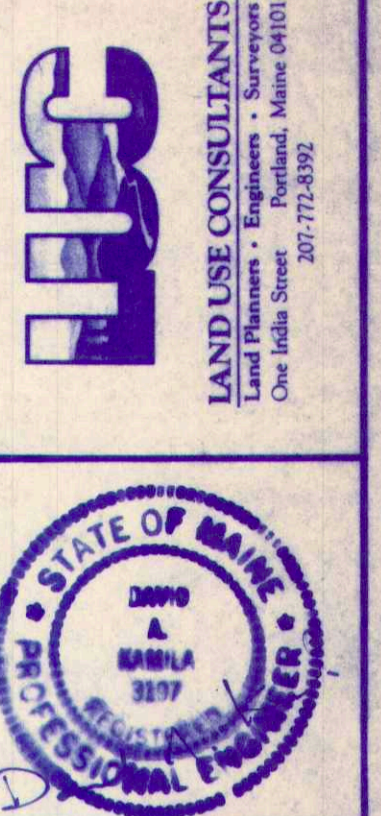


Marion Circle - Profile



MATCHLINE

MATCHLINE "C"

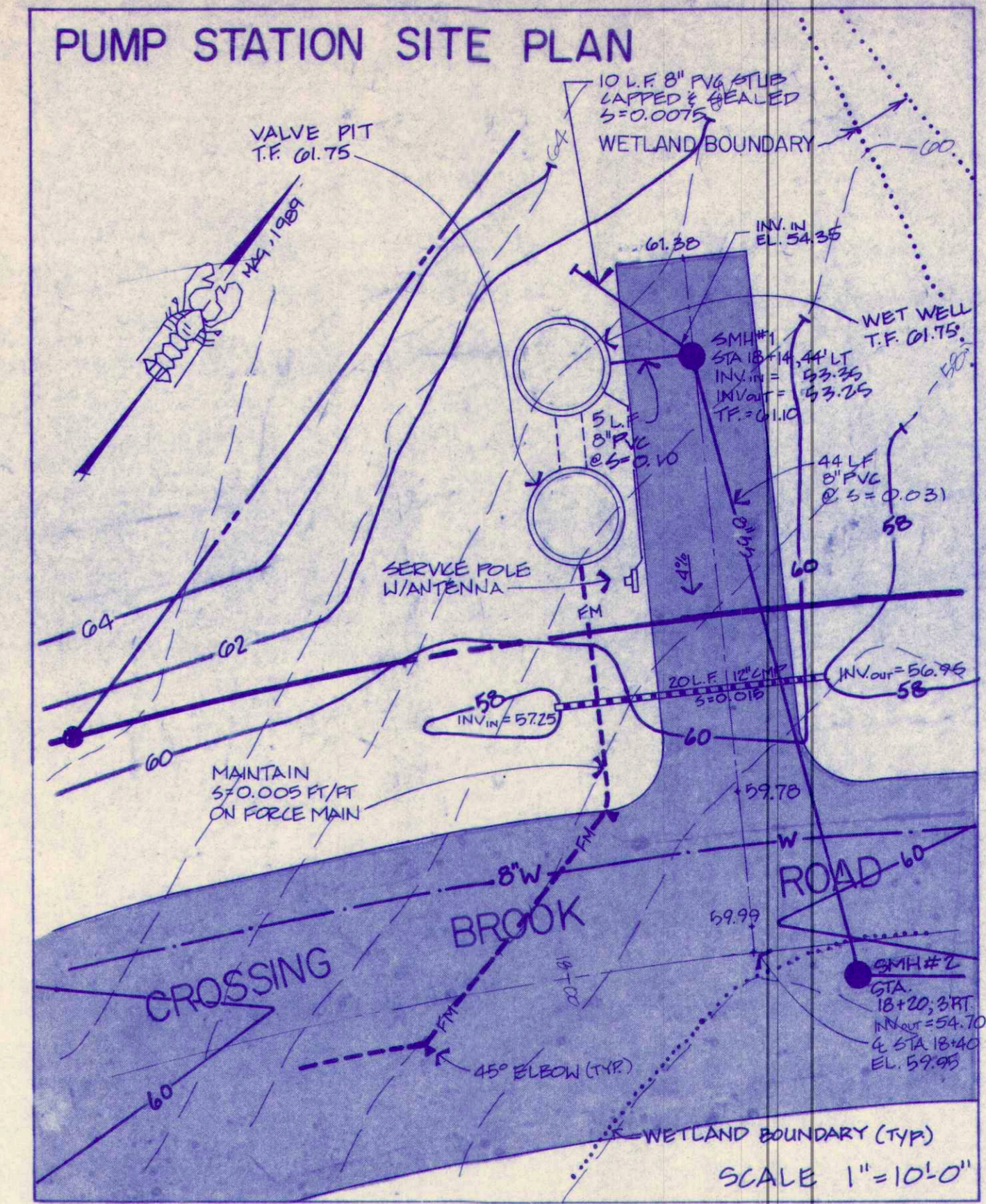


SMALL'S BROOK CROSSING
 For: CASCO PARTNER'S INC.
 37 Foreside Drive Cumberland, Maine 04110

Revision	Date	By	Checked
1	12-28-99	JLL	JLL
2	1-11-00	JLL	JLL
3	1-11-00	JLL	JLL
4	1-11-00	JLL	JLL
5	1-11-00	JLL	JLL
6	1-11-00	JLL	JLL
7	1-11-00	JLL	JLL
8	1-11-00	JLL	JLL
9	1-11-00	JLL	JLL
10	1-11-00	JLL	JLL
11	1-11-00	JLL	JLL
12	1-11-00	JLL	JLL
13	1-11-00	JLL	JLL
14	1-11-00	JLL	JLL
15	1-11-00	JLL	JLL
16	1-11-00	JLL	JLL
17	1-11-00	JLL	JLL
18	1-11-00	JLL	JLL
19	1-11-00	JLL	JLL
20	1-11-00	JLL	JLL
21	1-11-00	JLL	JLL
22	1-11-00	JLL	JLL
23	1-11-00	JLL	JLL
24	1-11-00	JLL	JLL
25	1-11-00	JLL	JLL
26	1-11-00	JLL	JLL
27	1-11-00	JLL	JLL
28	1-11-00	JLL	JLL
29	1-11-00	JLL	JLL
30	1-11-00	JLL	JLL
31	1-11-00	JLL	JLL
32	1-11-00	JLL	JLL
33	1-11-00	JLL	JLL
34	1-11-00	JLL	JLL
35	1-11-00	JLL	JLL
36	1-11-00	JLL	JLL
37	1-11-00	JLL	JLL
38	1-11-00	JLL	JLL
39	1-11-00	JLL	JLL
40	1-11-00	JLL	JLL
41	1-11-00	JLL	JLL
42	1-11-00	JLL	JLL
43	1-11-00	JLL	JLL
44	1-11-00	JLL	JLL
45	1-11-00	JLL	JLL
46	1-11-00	JLL	JLL
47	1-11-00	JLL	JLL
48	1-11-00	JLL	JLL
49	1-11-00	JLL	JLL
50	1-11-00	JLL	JLL
51	1-11-00	JLL	JLL
52	1-11-00	JLL	JLL
53	1-11-00	JLL	JLL
54	1-11-00	JLL	JLL
55	1-11-00	JLL	JLL
56	1-11-00	JLL	JLL
57	1-11-00	JLL	JLL
58	1-11-00	JLL	JLL
59	1-11-00	JLL	JLL
60	1-11-00	JLL	JLL
61	1-11-00	JLL	JLL
62	1-11-00	JLL	JLL
63	1-11-00	JLL	JLL
64	1-11-00	JLL	JLL
65	1-11-00	JLL	JLL
66	1-11-00	JLL	JLL
67	1-11-00	JLL	JLL
68	1-11-00	JLL	JLL
69	1-11-00	JLL	JLL
70	1-11-00	JLL	JLL
71	1-11-00	JLL	JLL
72	1-11-00	JLL	JLL
73	1-11-00	JLL	JLL
74	1-11-00	JLL	JLL
75	1-11-00	JLL	JLL
76	1-11-00	JLL	JLL
77	1-11-00	JLL	JLL
78	1-11-00	JLL	JLL
79	1-11-00	JLL	JLL
80	1-11-00	JLL	JLL
81	1-11-00	JLL	JLL
82	1-11-00	JLL	JLL
83	1-11-00	JLL	JLL
84	1-11-00	JLL	JLL
85	1-11-00	JLL	JLL
86	1-11-00	JLL	JLL
87	1-11-00	JLL	JLL
88	1-11-00	JLL	JLL
89	1-11-00	JLL	JLL
90	1-11-00	JLL	JLL
91	1-11-00	JLL	JLL
92	1-11-00	JLL	JLL
93	1-11-00	JLL	JLL
94	1-11-00	JLL	JLL
95	1-11-00	JLL	JLL
96	1-11-00	JLL	JLL
97	1-11-00	JLL	JLL
98	1-11-00	JLL	JLL
99	1-11-00	JLL	JLL
100	1-11-00	JLL	JLL

ROAD PLAN / PROFILE

Job No. 2040
 Sheet



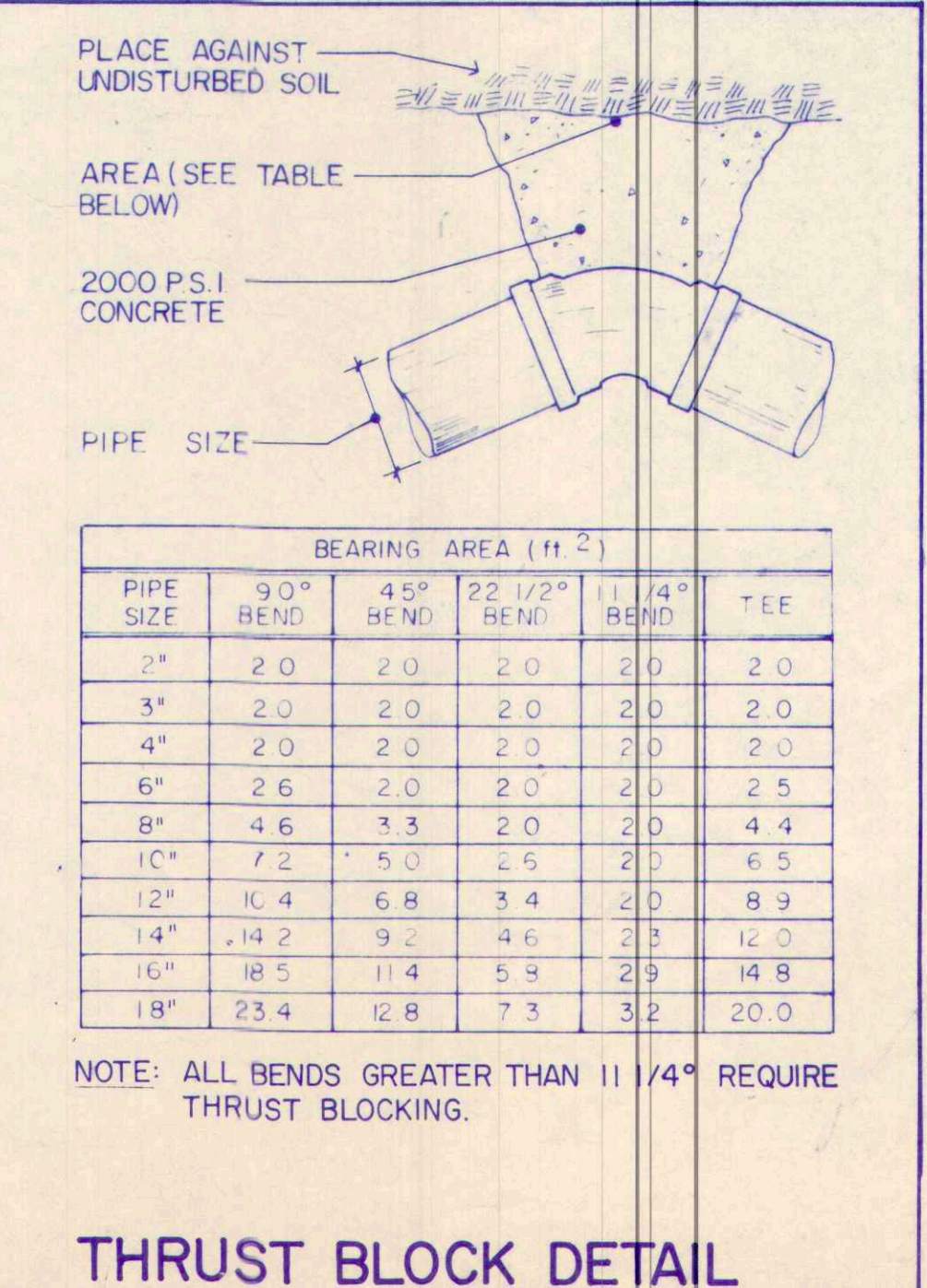
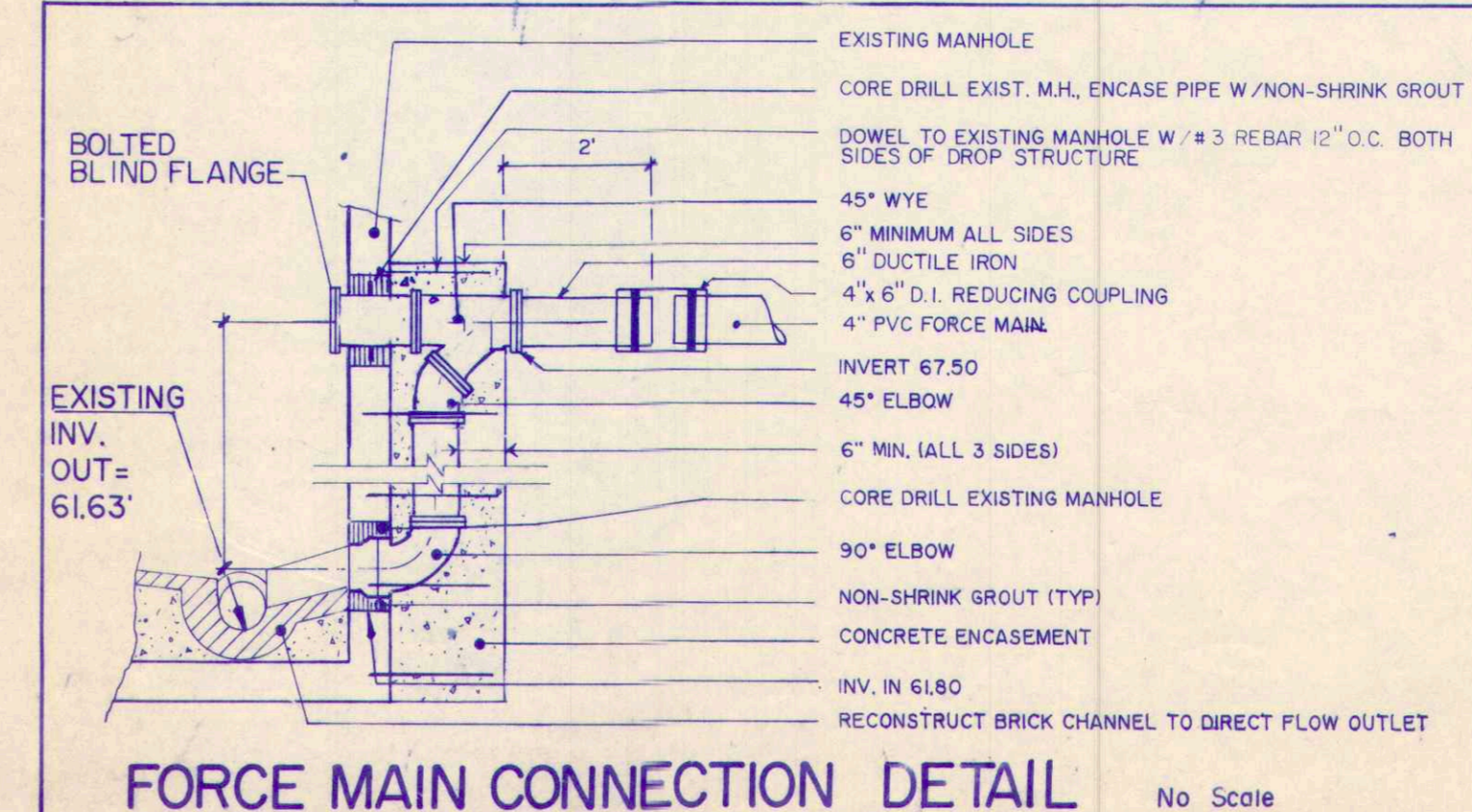
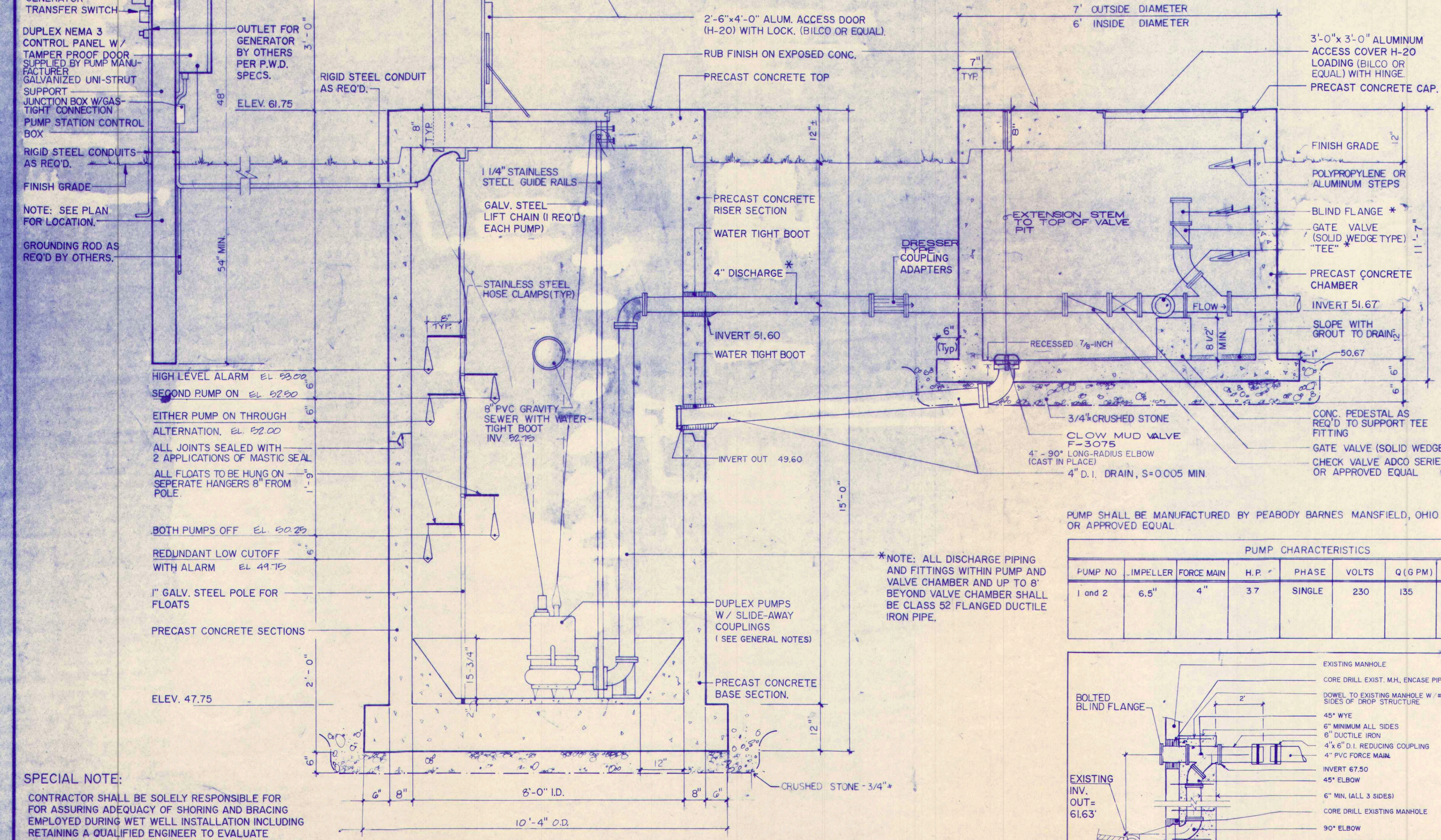
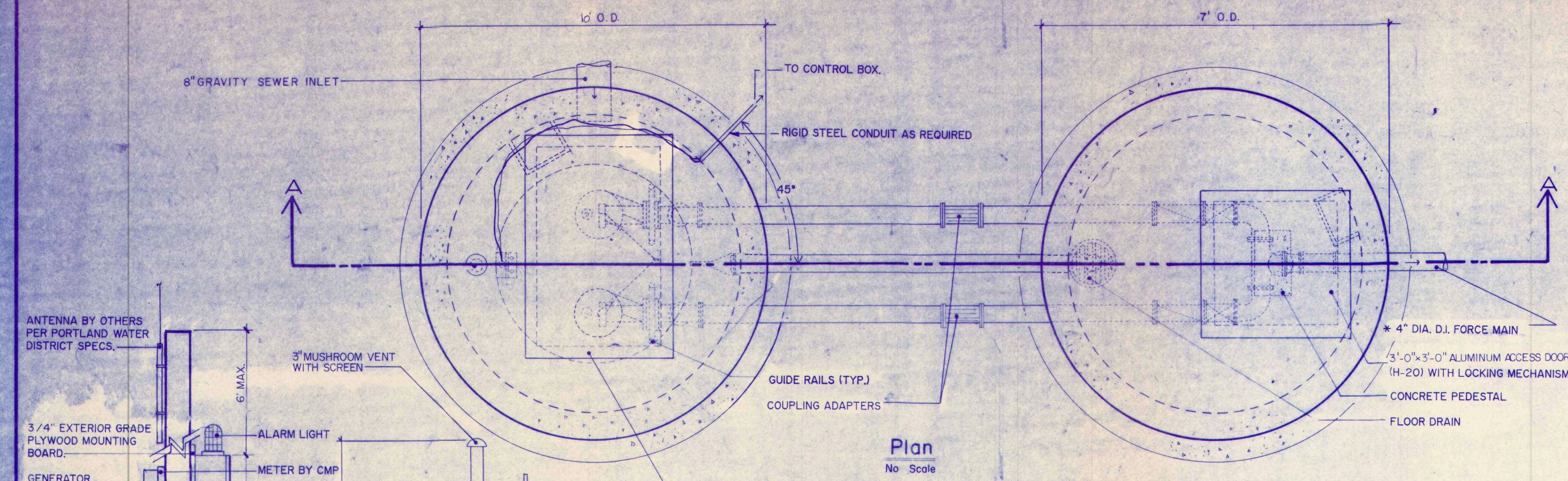
- GENERAL NOTES**
1. ALL WORK SHALL BE IN CONFORMANCE WITH TOWN OF CUMBERLAND, PORTLAND WATER DISTRICT AND OTHER UTILITY COMPANIES STANDARDS.
 2. CONTRACTOR SHALL VERIFY LOCATIONS OF EXISTING UTILITIES WITH APPROPRIATE UTILITY COMPANIES PRIOR TO START OF CONSTRUCTION.
 3. CONTRACTOR SHALL SECURE ALL NECESSARY PERMITS FOR WORK SHOWN ON THESE PLANS.
 4. ALL WORK SHALL COMPLY WITH LOCAL, STATE AND FEDERAL SAFETY REGULATIONS.
 5. CONTRACTOR SHALL COORDINATE WORK WITH RESPECTIVE UTILITY COMPANIES IN A TIMELY FASHION.
 6. THE CONTRACTOR SHALL BE SOLELY RESPONSIBLE FOR ALL MEANS, METHODS AND TECHNIQUES EMPLOYED TO PERFORM THE WORK SHOWN ON THESE PLANS.
 7. NO BLASTING WILL BE ALLOWED WITHIN ANY UTILITY COMPANY EASEMENT WITHOUT THE NOTIFICATION AND APPROVAL OF APPROPRIATE UTILITY.
 8. ALL UNDERGROUND POWER, TELEPHONE AND T.V. CABLES SHALL BE RUN IN CONDUIT OF A SIZE AND TYPE SPECIFIED BY RESPECTIVE UTILITY COMPANY UNDER ALL PAVED SURFACES.
 9. TELEMETRY SYSTEM TO BE AN AQUATROL PER PORTLAND WATER DISTRICT SPECIFICATIONS.

Revision	Date
01	01-14-10
02	01-29-10
03	02-04-10
04	02-15-10
05	02-11-10
06	03-10-10

Designed W.F.W. *W.F.W.*
Drawn *W.F.W.*
Checked *W.F.W.*
Scale As Shown
Date 4-10-10

Pump Station Details

Job No: 2040
Sheet



SPECIAL NOTE:
CONTRACTOR SHALL BE SOLELY RESPONSIBLE FOR ASSURING ADEQUACY OF SHORING AND BRACING EMPLOYED DURING WET WELL INSTALLATION INCLUDING RETAINING A QUALIFIED ENGINEER TO EVALUATE SUBSOIL CONDITIONS AND RECOMMENDING PROPER SHORING DEPTH AND BRACING REQUIRED TO AVOID POTENTIAL DISPLACEMENT.

- HIGH LEVEL ALARM EL 53.00
- SECOND PUMP ON EL 52.00
- EITHER PUMP ON THROUGH ALTERNATION. EL 52.00
- ALL JOINTS SEALED WITH 2 APPLICATIONS OF MASTIC SEAL
- ALL FLOATS TO BE HUNG ON SEPARATE HANGERS 8" FROM POLE
- BOTH PUMPS OFF EL 50.25
- REDUNDANT LOW CUTOFF WITH ALARM EL 49.75
- 1" GALV. STEEL POLE FOR FLOATS
- PRECAST CONCRETE SECTIONS
- ELEV. 47.75

- ANTENNA BY OTHERS PER PORTLAND WATER DISTRICT SPECS.
- 3/4" EXTERIOR GRADE PLYWOOD MOUNTING BOARD.
- GENERATOR TRANSFER SWITCH
- DUPLEX NEMA 3 CONTROL PANEL W/ TAMPER PROOF DOOR SUPPLIED BY PUMP MANUFACTURER GALVANIZED UNI-STRUT SUPPORT JUNCTION BOX W/GAS-TIGHT CONNECTION PUMP STATION CONTROL BOX
- RIGID STEEL CONDUITS AS REQ'D.
- FINISH GRADE
- NOTE: SEE PLAN FOR LOCATION.
- GROUNDING ROD AS REQ'D BY OTHERS.
- 3" MUSHROOM VENT WITH SCREEN
- ALARM LIGHT
- METER BY CMP
- OUTLET FOR GENERATOR BY OTHERS PER P.W.D. SPECS.
- RIGID STEEL CONDUIT AS REQ'D.
- ELEV. 61.75