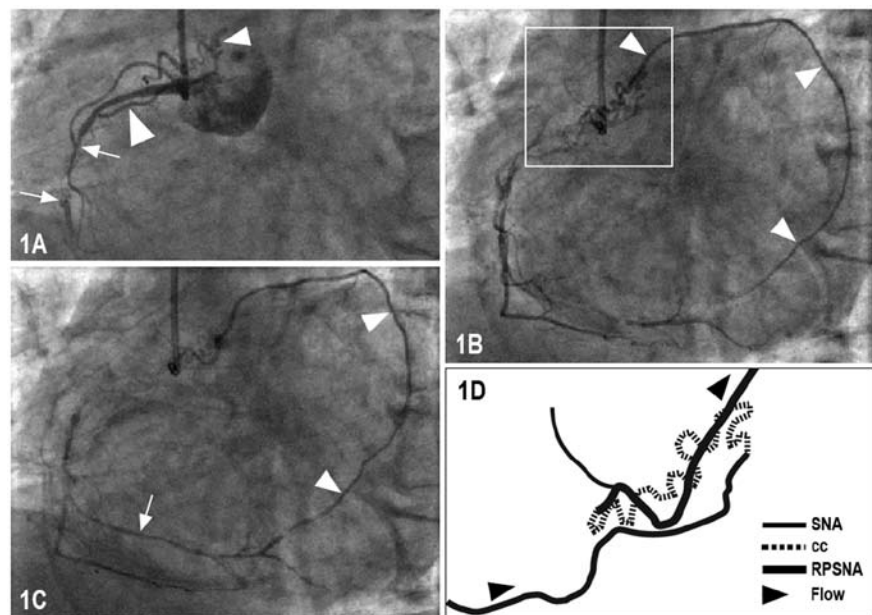


## IMAGES IN MEDICINE...

## A Unique Right Coronary Artery Intra-coronary Collateral Pathway

Isidoros P. Gavaliatsis, MD, FESC

Department of Interventional Cardiology (Hemodynamic Laboratory), Evagelismos Hospital, Athens, Greece



A 73-year-old man with angina pectoris underwent coronary angiography with the following findings: left anterior descending coronary artery moderately diseased; right coronary artery (RCA) proximally occluded with an atrial intra-coronary collateral pathway emerging from a proximal sinus node artery (SNA) and ending to a distal “right posterior” SNA (RPSNA), which was retrogradely supplying the peripheral RCA (panels 1A-1C, progressive RCA angiographic frames).

Panel 1A: right coronary artery angiogram showing the occluded RCA (arrows) with its proximal SNA (large arrowhead) giving rise to the coronary collateral (cc) (small arrowhead). Panel 1B: frame revealing RPSNA (arrowheads) to which the cc vessel leads. The cc pathway is schematically depicted in panel 1D. Panel 1C: frame indicating the post-occlusion RCA (arrow) filled via RPSNA (arrowheads).

The right posterior sinus node artery was first described, coined and reported in 2000.<sup>1</sup>

Address for correspondence:

Isidoros P. Gavaliatsis

e-mail: ipgavaliatsis@pathfinder.gr

Submitted: May 8, 2009

Accepted: June 5, 2009

### REFERENCE

1. Gavaliatsis IP. ‘Right posterior’ sinus node artery. *Int J Cardiol* 2000; 75:301-3.