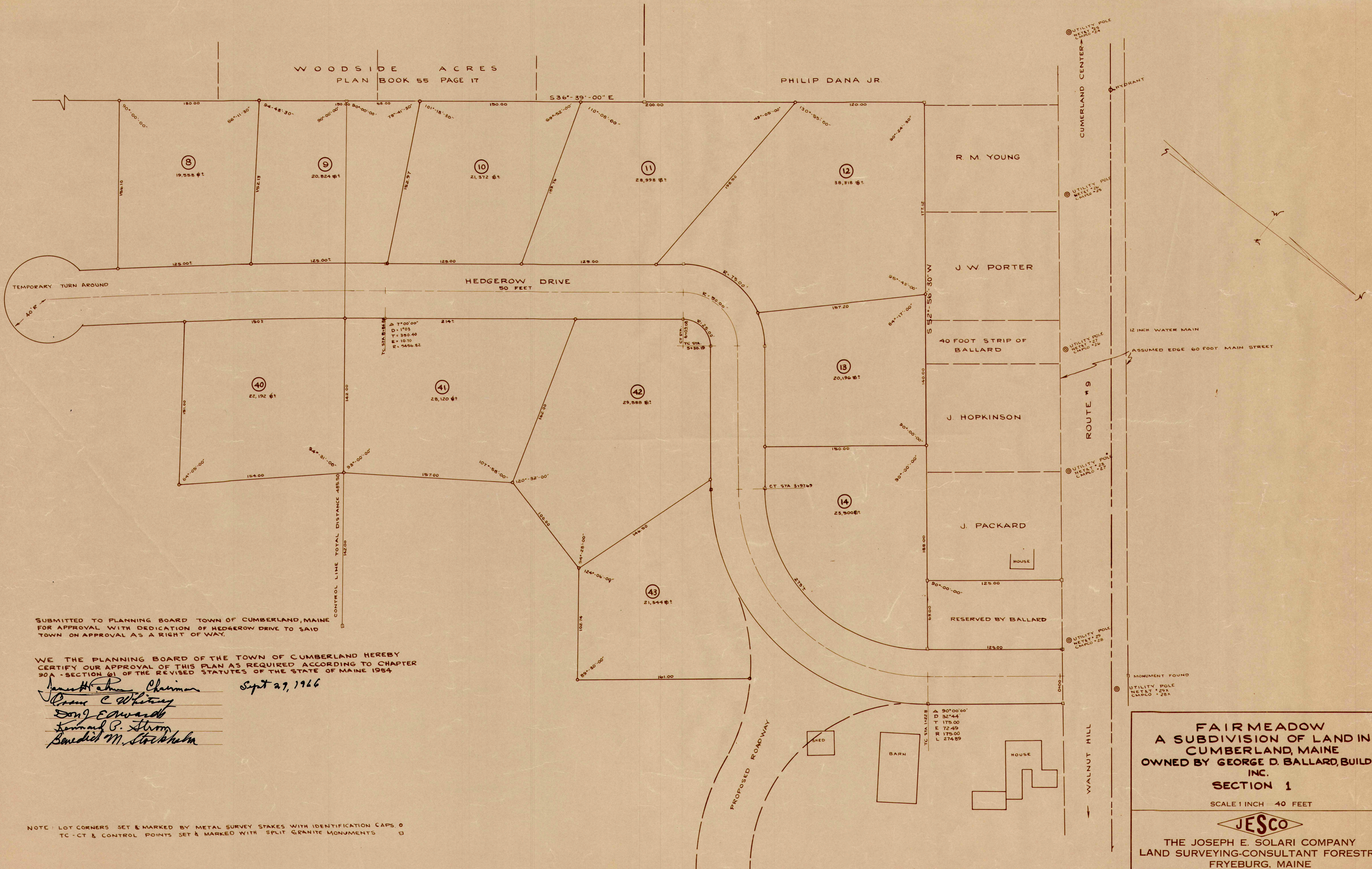


WOODSIDE ACRES
PLAN BOOK 55 PAGE 17

PHILIP DANA JR.



SUBMITTED TO PLANNING BOARD TOWN OF CUMBERLAND, MAINE FOR APPROVAL WITH DEDICATION OF HEDGEROW DRIVE TO SAID TOWN ON APPROVAL AS A RIGHT OF WAY.

WE THE PLANNING BOARD OF THE TOWN OF CUMBERLAND HEREBY CERTIFY OUR APPROVAL OF THIS PLAN AS REQUIRED ACCORDING TO CHAPTER 90A - SECTION 61 OF THE REVISED STATUTES OF THE STATE OF MAINE 1954

James H. Adams, Chairman
Oliver C. Whitney
Don J. Edwards
Kenneth P. Strong
Benedict M. Stockholm

Sept 27, 1966

NOTE: LOT CORNERS SET & MARKED BY METAL SURVEY STAKES WITH IDENTIFICATION CAPS. TC - CT & CONTROL POINTS SET & MARKED WITH SPLIT GRANITE MONUMENTS

FAIR MEADOW
A SUBDIVISION OF LAND IN
CUMBERLAND, MAINE
OWNED BY GEORGE D. BALLARD, BUILDER
INC.
SECTION 1
SCALE 1 INCH = 40 FEET

JESCO
THE JOSEPH E. SOLARI COMPANY
LAND SURVEYING-CONSULTANT FORESTRY
FRYEBURG, MAINE

SURVEYED BY: JOSEPH E. SOLARI DATE: 8 AUGUST 1966
DRAWN BY: J. E. SOLARI DATE: 10 AUGUST 1966

Approved 11 August 1966 Joseph E. Solari Box 297