

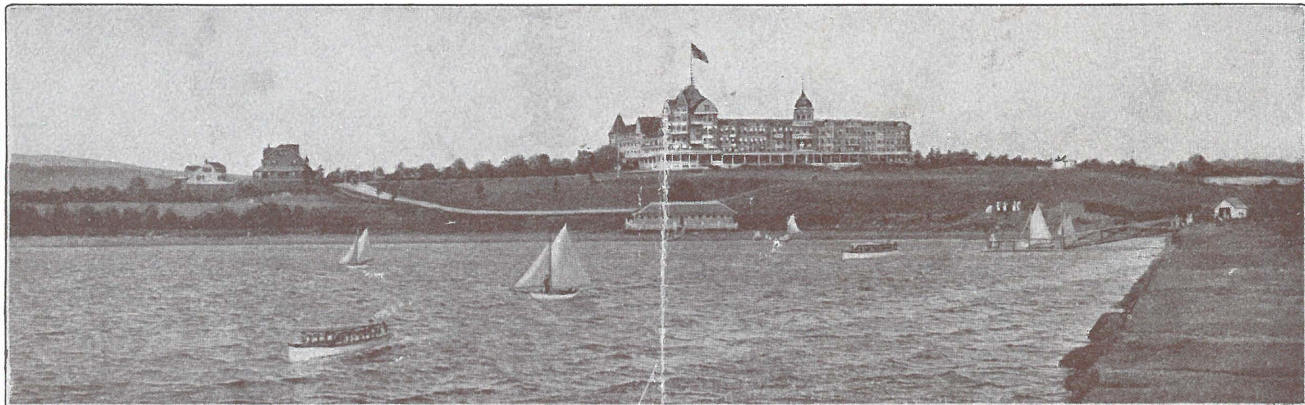
THE
SAMOSSET
Penobscot Bay
Rockland Breakwater, Maine.

SEASHORE
LAKES and
MOUNTAINS

Ricker Hotel Company
A. W. Hodgdon, Manager

NO MOSQUITOES
FLIES or
HAY FEVER

SEASON, JUNE 17th TO SEPTEMBER 15th OR LATER



The hotel stands on an eminence seventy-five feet above and one thousand feet back from the shore. Before it stretches out the most beautiful bay in the world—Penobscot; to the right, sufficiently distant, the busy harbor of Rockland, while behind stands the princely Camden Range.

The landscape architect has made the grounds beautiful in lawns, flowers and drives, which are included in the park and combine to make this a veritable summer paradise by the sea.

The hotel is controlled by the same management and conducted upon the same standard of perfection as the famous Poland Spring House.

Poland Water supplied gratuitously to guests' rooms.

No charge for golf.

6-11
3-15-06

THE SAMOSET

Descriptive In 1902 when the Ricker Hotel Company purchased the property previously known as the Bay Point Hotel, and before they opened The SamOset (to which the name was changed), it was rebuilt, refurbished and made modern in every detail known to the strictly high-class resort, leaving practically nothing recognizable of the former house.

The accompanying illustrations will serve to show the beautiful architectural design of the exterior of The SamOset, but it is impossible to describe adequately the complete revolution that took place in the original house in every room, every department, and upon the grounds throughout the entire property, which has resulted in converting The SamOset into the most modern of summer resorts, in sanitation, equipment and general service.

Unusually careful plumbing was installed throughout the hotel, every pipe and piece of plumbing being torn out of the original house and private bathrooms provided. Every room was provided with exceptionally large closets, new furniture and new carpets; in fact, the suites and rooms in every part of the house were arranged with as much comfort as the most exacting guest could require.

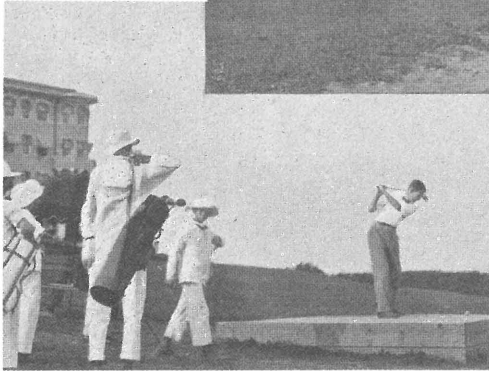
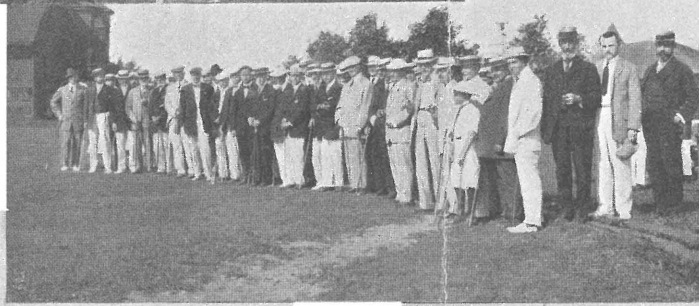
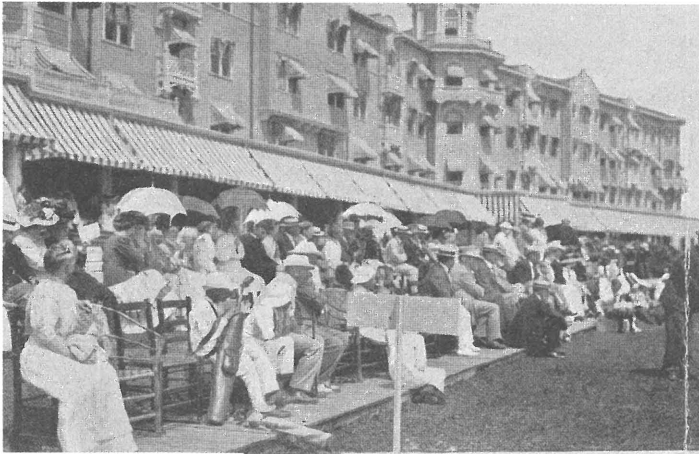
With the phenomenal success of The SamOset during the first three seasons and at the close of the season of 1904, after their guests had expressed



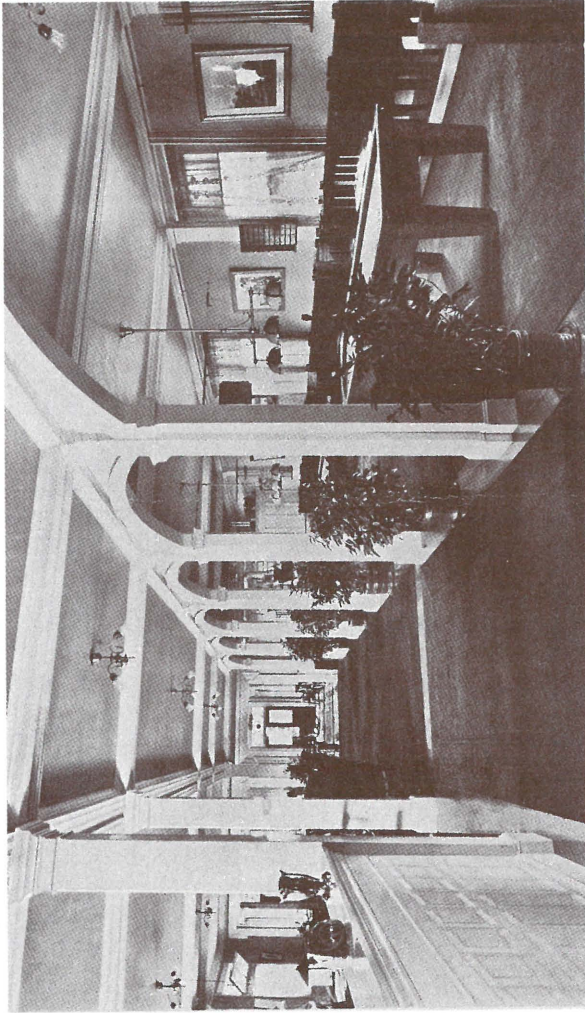
Bay Front Approach Drive



Rotunda



Watching the Games



Section of Rotunda and Bagatelle Parlor

themselves that further improvements seemed unwarranted, they changed the entire character of the public rooms on the office floor, with new decorations, etc., and added large plate glass windows in all these rooms, thus commanding marine views unequalled on the Atlantic Coast.

During the season of 1905 the Popularity demand for accommodations was so great, and being taxed to its utmost during the entire season, it was decided necessary to build an addition in 1906 which nearly doubled its capacity, but this addition proved merely adequate for the tremendous seasons which followed. The season of 1908, however, was so great that even our most sanguine expectations were exceeded.

All the rooms are of large proportions, handsomely furnished. In the new wing every room connects with a private bath. (For maids and valets twenty rooms were arranged in the original part.)

The guests' rooms in the new addition have very large closets, each double room for two persons having two closets, together with a closet off bathroom.

In the addition is located the new dining-room, the size of the entire new wing, which is surrounded by walls of large plate glass windows, many of them being six by ten feet in size. The view is unequalled, each seat commanding a most unusual marine or mountain picture.

The office was enlarged seventy-five by forty feet additional space, practically doubling its size, together with a large and spacious gentlemen's reading and writing room. A children's playroom was added and furnished with hobby horses, see-saws, blocks and various playthings to the delight of the little folks.

As a part of the new office, but separated by arches, is located the new parlor billiard room, furnished in keeping with a room so conveniently located. This room is an attractive feature.

In addition to all these improvements, the house is provided with an elevator, and steam heat throughout. The public rooms on the first floor are very large. At night the whole house is brilliantly lighted by electricity; the wiring being done after the most approved methods of the General Electric Company.

Situation Geographically, The SamOset lies on the westerly side of Penobscot Bay, two miles north of the city of Rockland, with Bar Harbor and other resorts diagonally across the bay at distances varying from six to fifty miles further east.

Besides seashore attractions, The SamOset has mountains and lakes, either of which alone would make the reputation of any resort. This combination of ocean, lake and mountain scenery is The SamOset's unique attraction. The country about has marvelous alternations of mountain and valley, beach, bold cliffs and gigantic rocks, together with lovely woods to the water's edge and paths leading to pleasant groves and shady retreats. There is in it just the right commingling of wildness and softness. There is the open sea for those who love its excitement, and the land-locked harbor for those who prefer its tranquillity. Inland are to be enjoyed exquisite mountain lakes, while for the hardy pedestrian there are the inviting mountain ranges.

This diversity of scenery is one of the especial charms of a sojourn here. A mountain climb one day can be alternated with deep sea fishing the next; a yachting trip with a golf game; boating in the harbor with canoeing on the lakes. There are several



Breakwater Promenade

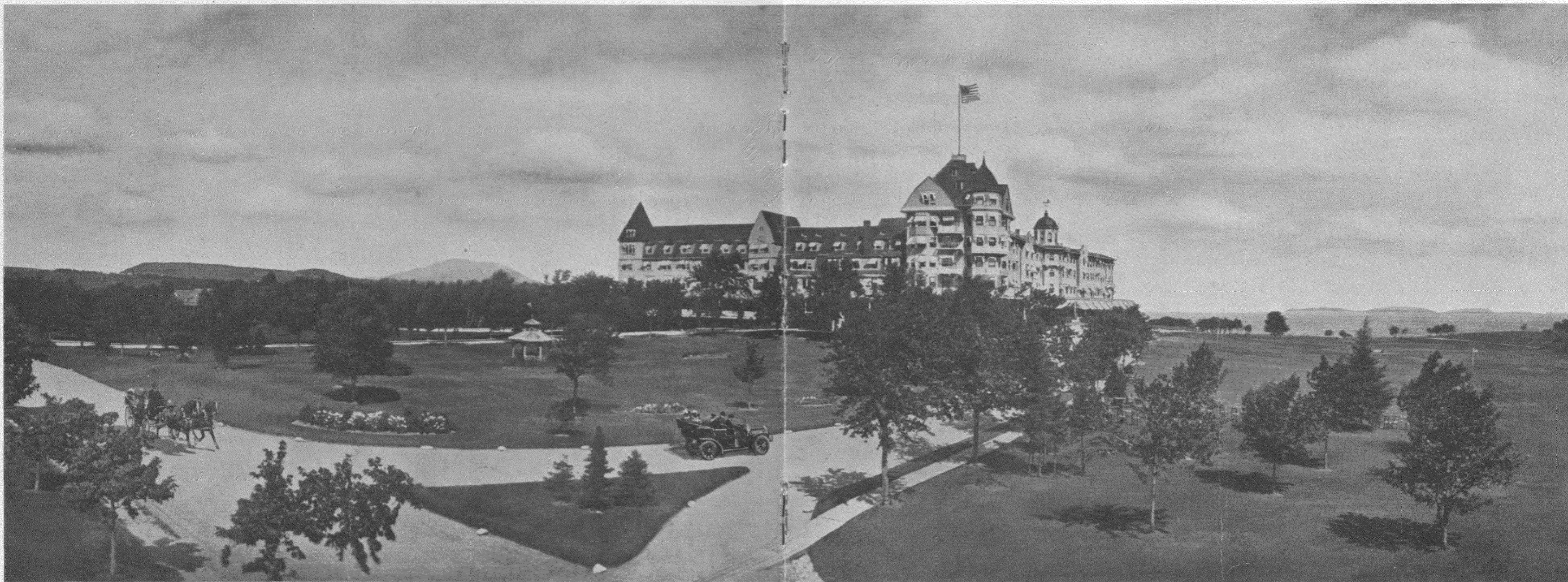


Reading and Writing Room

groups of mountains in the vicinage, six of whose summits range in height from eleven hundred to fourteen hundred and fifty-seven feet. Mount Battie (1325 feet above the sea) is owned by a group of summer residents organized as the Mount Battie Association, such ownership having been deemed advisable for the preservation of the wonderful natural beauties of this mountain by the sea. At the summit a clubhouse has been erected and through the courtesy of the Association our guests are welcomed there. The view from the verandas of the clubhouse over land and sea is of such beauty and grandeur that the beholder can never forget it. One of the features of the club is the dinners served there.

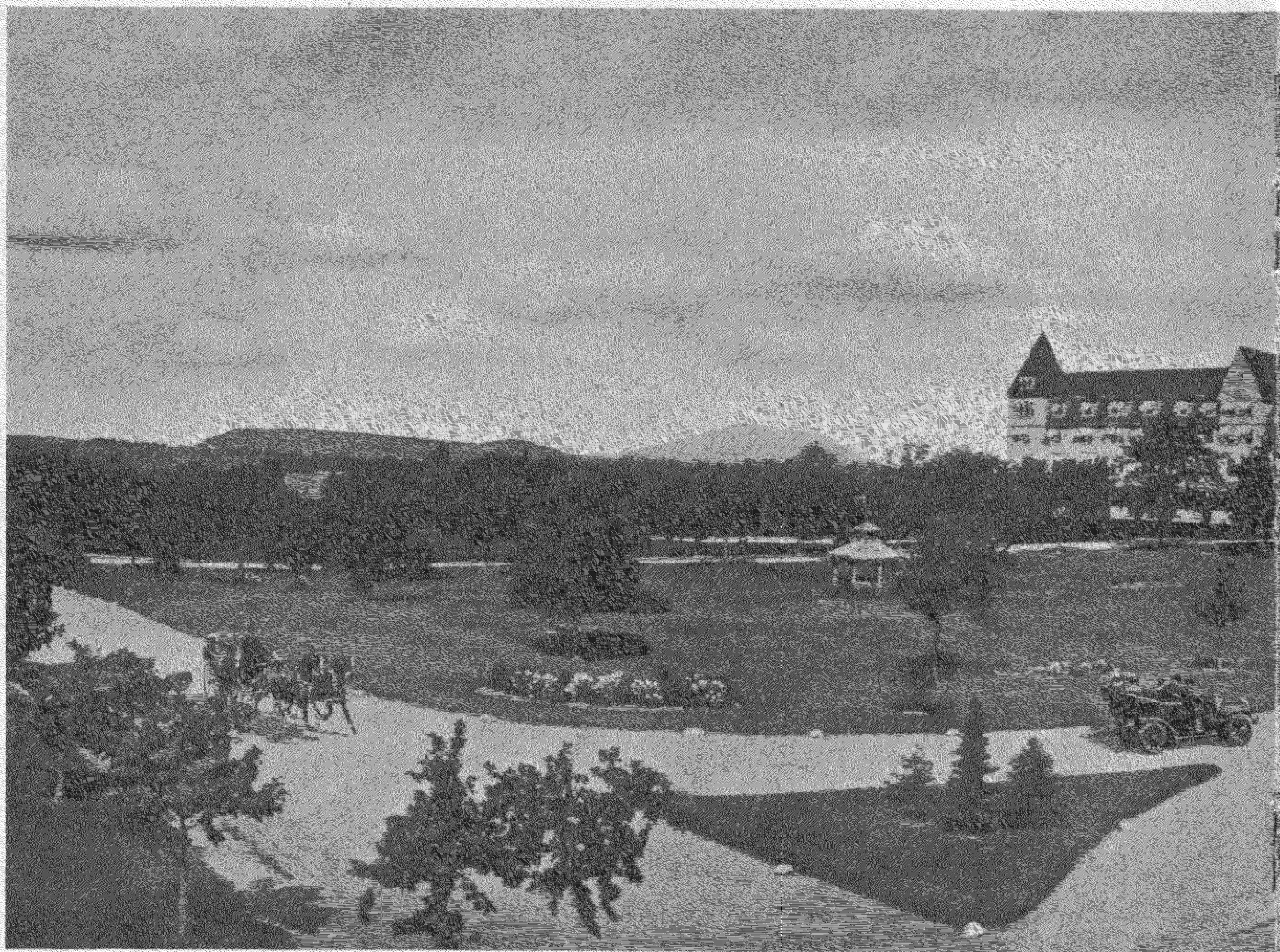
Attractive as The SamOset is on its Scenery seaward side, its inland scenery is fairer still. It has its lake region, which includes some of the most beautiful sheets of fresh water to be found. Notable among these are Lake Megunticook, Mirror Lake and Hosmer's Pond. To see Lake Megunticook in all its perfection, one should sail among its islands and follow the devious windings of its shores. A small steamer plies to and fro on this lake obedient to the wishes of its passengers, every moment bringing fresh change of scene.

The cuisine of The SamOset The Cuisine receives the same careful attention and is at the same high standard as that of the Poland Spring House. The kitchen is a model in arrangement and general equipment and guests are cordially invited to inspect it. The kitchen, laundry, powerhouse and servants' quarters are in separate buildings, commodious, lighted by electricity, and sufficiently distant from the main house to prevent any annoyance to the guests.



Sea Shore, Mountains and Country

Golf Course, Putting Course and Portion of the Two Hundred and Fifty Acres Surrounding The Sam Oset



Sea Shore, Mountains and Country

Afternoon Teas A feature of the season is the afternoon teas which are served daily to the guests, either on the lawn in the shade of the trees, on the veranda, or in the rotunda, according to the weather. They make a very enjoyable social feature.

Drinking Water The water at The SamOset is wonderfully pure. Brought here from Mirror Lake, a natural reservoir, fed by springs high up in the mountains, it enters the house clear and sparkling. The following report upon the analysis of the water is of interest in this respect:

BOWDOIN COLLEGE, Brunswick, Me.

PRESIDENT CAMDEN AND ROCKLAND WATER CO.:

The analysis of your mountain spring water taken from Mirror Lake justifies me in certifying that it is a water of extraordinary purity. There are in fact, absolutely no injurious ingredients in it; it is almost as pure as the purest spring water I ever analyzed and I think it would be hard to match it anywhere.

FRANKLIN C. ROBINSON,

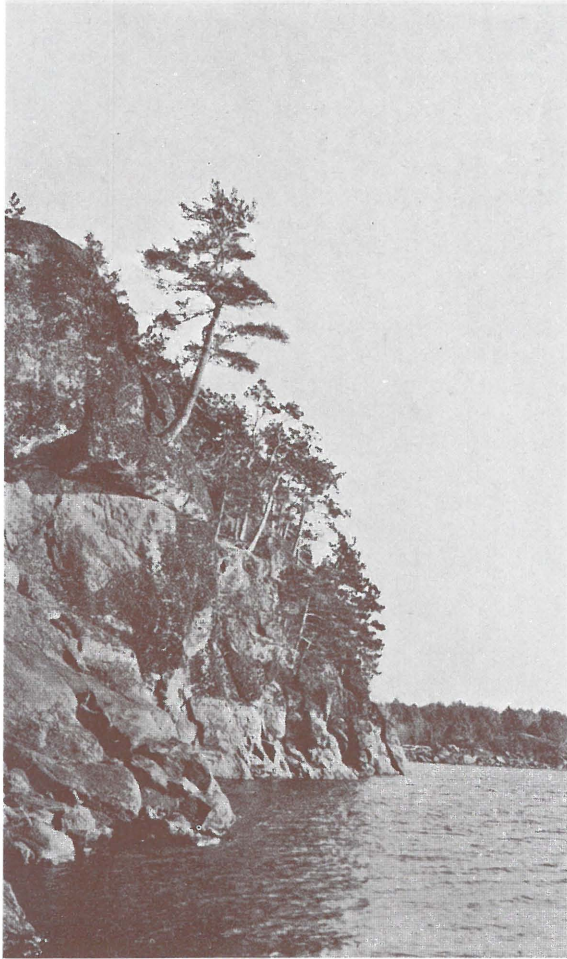
Professor of Chemistry and Assayer State of Maine.

Location In its location The SamOset is particularly well favored, being so placed and designed that all the rooms in the entire house receive the health and cheer of the sun's rays. From each room there is an unobstructed view of magnificent sweep, and from those that do not face the ocean a landscape of rarest beauty is to be enjoyed.

The hotel commands a sweeping view of Penobscot Bay for miles, and is protected from severe weather by a beautiful chain of islands, which, at distances varying from three to sixteen miles, form the almost continuous arc of a circle whose lines seem taken ashore and continued on about a six-mile radius in the beautiful Camden Mountains.



Southeast Front



Character of the Sea Shore

The accessibility of the different points of interest is a matter to be greatly appreciated. Within the compass of a day delightful trips may be made by water to Belfast, Castine, Pemaquid, Islesboro (prominent for its yacht racing), and Vinalhaven (famous for its quarries and fisheries). Or, if one prefers the land, charming trips are offered to Camden, Thomaston and Warren. In fact, so fraught with interest is the region that new and varied scenes may be presented to the tourist each day of a long sojourn.

Almost every form of enjoyment is open to The SamOset *Amusements* guests; beautiful drives, inviting walks, mountain climbing, golf, tennis, sailing, rowing, bathing, fish-ing, billiard-bagatelle, shuffleboards, billiards, pool, etc. Afternoon concerts are given under the direc-tion of Mr. August Kuntz, with an orchestra of musicians from Boston's famous Symphony Orches-tra, with evening dances and numerous professional entertainments introduced during the season.

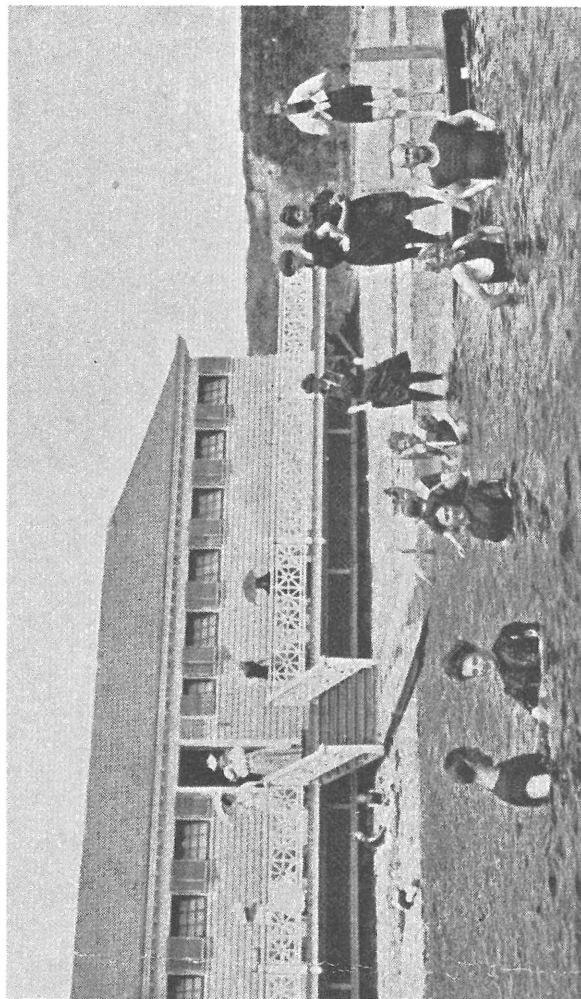
Within the extensive grounds about the *Golf* hotel is an excellent nine-hole golf course. The first "tee" starts from in front of the hotel within fifty feet of the veranda, the ninth green being but a short distance from the hotel at one side. The course is twenty-nine hundred and sixty-six yards in length with good natural features, picturesque and interesting. A great amount of work is constantly being done on the course and rustic summer houses add much to the beauty of the grounds and the com-fort of those watching the play. Guests will find the course greatly improved each year, and we boast a most superior and satisfactory course, and since the

links are within the estate of The SamOset *their use is free*. There are some fifty caddies, all dressed in white sailor suits (in keeping with the environment), uniform, clean, and neat in appearance (see illustrations). *Golf is a great feature at The SamOset* and everything is done for the golfer that will make the game as satisfactory as possible. The links are under the personal supervision of a well known golf instructor. Lockers are also provided. Putting contests are a very popular outdoor amusement, some forty cups being offered during the season of 1908. There are three large tennis courts overlooked from the verandas and surrounded by trees.

Bathing Contrary to the general impression, the bathing at The SamOset is delightful. The purity of the water and its temperature, which is just right for the best tonic effect, combine to make bathing here more popular every season. For the accommodation of bathers, an elegant bathing pavilion is provided (see illustrations).

Rowing Protected by the great sea wall, the placid harbor offers the finest and at the same time the safest rowing and sailing on the Maine coast. A fleet of boats is maintained, which includes rowboats, sailboats and a forty-foot launch, manned by skippers of long years of experience who are available at the boathouse.

Stables, Livery and Garage The stables, erected according to the most approved methods, provide horses for driving, and well trained horses for saddle use. The drives about The SamOset in all directions, overarched with trees and on the best of roads, are a source of wonder and delight to the visitors. They wind



Bathing



Seen from the Veranda

in and out among the mountains and along the shores of numerous lakes and Penobscot Bay. It is said that one can take a different drive every day during the season without exhausting the list. Guests who prefer to bring their own horses, carriages and automobiles may be assured of their perfect care. The quarters provided for coachmen and chauffeurs are equipped with electric lights, baths and all modern improvements. A garage is provided to properly care for automobiles and experienced persons are in attendance to look after them. There is an automobile service to and from the railway station and boats in addition to our already complete carriage service, which will meet all through trains (and boats if notified).

Yachts of any draft may enter the harbor in front of the hotel and here secure Yachts a safe and sure protection from heavy seas. No finer sailing ground than that afforded by the broad expanse of Penobscot Bay can be found. The breakwater, which the National Government has completed after twenty years' work and the expenditure of over a million dollars, ranks as one of the greatest engineering achievements of its kind in the world. It projects into the bay a little less than a mile. It is seventeen feet across the top and is used as a promenade. At the sea end, which is in sixty feet of water, the Government has established a lighthouse.

The SamOset is the only resort on the New England coast that boasts its water front as the rendezvous of the North Atlantic Squadron during its summer cruises, and its presence adds much gaiety during their stay.

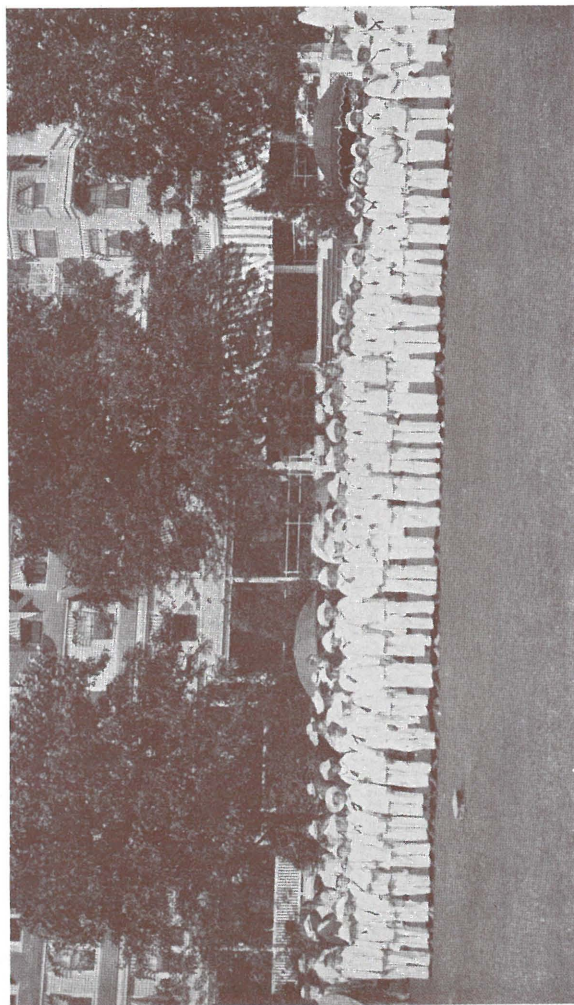
Every courtesy and attention for the accommodation of yachtsmen is extended at the hotel. It is

earnestly desired that they make The SamOset their stopping place and headquarters for the reception of mail, telegrams and express matter, and avail themselves of our deep water anchorages directly in front of the hotel and adjacent to our boat pier and float. Supplies will be furnished at reasonable rates.

Early History The history of this locality, which was one of the earliest occupied by the American colonists, is full of interest and romance. Here occurred many stirring events in the days of the French and Indian Wars and later in the Revolution. Here (erected shortly after the Revolution) was the famous manorial seat of Gen. Henry Knox, Washington's secretary of war, the grandeur of which was the wonder of the day.

Warrenton Park Along the north shore, a lovely estate, famous for its historic associations and beautiful scenic attractions, known as Warrenton Park, and which connects with the beautiful SamOset woods, has been the envy and admiration of every visitor. The drives through this park and The SamOset woods are indescribably beautiful.

SamOset, the Indian Sachem Originally known as the Bay Point Hotel, it seemed more than fitting that, situated as it is, on ground replete with the romance of colonial times, the reconstructed house should bear a name commemorating some event in the earliest known history of the region; hence the name "SamOset," that of the friendly Indian sachem of the bay who exchanged his great domain with the first white settlers for a few furs; and who, earlier, learning of the arrival of the Pilgrim Fathers, journeyed from Penobscot to Plymouth in the middle of



The Caddies

March, on foot, his only covering "a leather about his waist, with fringe a span long or a little more, and moccasins," and upon meeting them broke off the point of his arrow in token of his peaceful disposition and uttered the words, "Welcome, Englishmen," the first speech ever made on this continent, and still one of the best, as the late Senator Hoar remarked in quoting in his address of welcome to the Honorable Artillery Company of London, England, at the banquet in their honor at Boston, October 5, 1903. These memorable events of early colony days are embodied in the name and seal of the property which has since seen such marvelous changes in human progress.

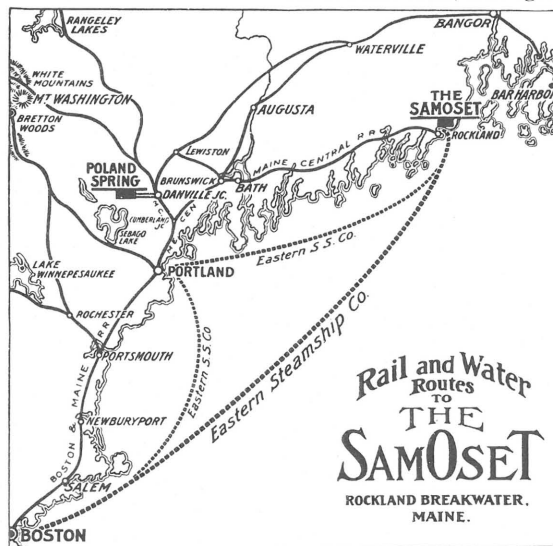
September September is unquestionably the most beautiful month of the whole season in the region of The SamOset. The atmosphere is clear as crystal and the distant views seem magnified with clearness. The air is tempered to the right degree to be neither too hot nor cold, and to the point of giving tonic to the system and energy to every effort for enjoyment. Should a night or morning be cool, the hotel, being heated throughout with steam, provides the full comfort of home. Indeed, summer tourists cannot appreciate the rare beauties and complete pleasure of a summer sojourn here until they have passed a part or the whole month of September at The SamOset. We earnestly recommend our patrons to come in September, and those who are not obliged to return home early for school openings or exacting affairs, and who can remain as well as not, to do so through this month. Frost is seldom known here until well into October, and the temperatures are always warmer in September than at inland resorts.

The SamOset may be reached from Boston by the Boston & Maine Central Railroads and the Eastern Steamship Line (refer to their timetables). The Maine Central Railroad will have ready for the season of 1909 a large new steel ferryboat at Bath, which will transfer nine Pullman cars at one time, giving quick service, and avoiding the delays of previous seasons.

For further information, address, until June 1st, the manager's booking office, 153 Franklin Street, Boston (Poland Water Depot), or the Poland Water Depots, 1180 Broadway, New York City, and 1711 Chestnut Street, Philadelphia, Pa.

After June 1st, The SamOset, Rockland Breakwater, Maine.

RICKER HOTEL COMPANY,
A. W. HODGDON, Manager



THE
SAMOSET



THE
SAMOSET

Rockland Breakwater
MAINE



1909