

1935

# Maine: The Land of Remembered Vacations

Maine Development Commission

Harrie B. Coe

Follow this and additional works at: [http://digitalmaine.com/decd\\_docs](http://digitalmaine.com/decd_docs)

---

## Recommended Citation

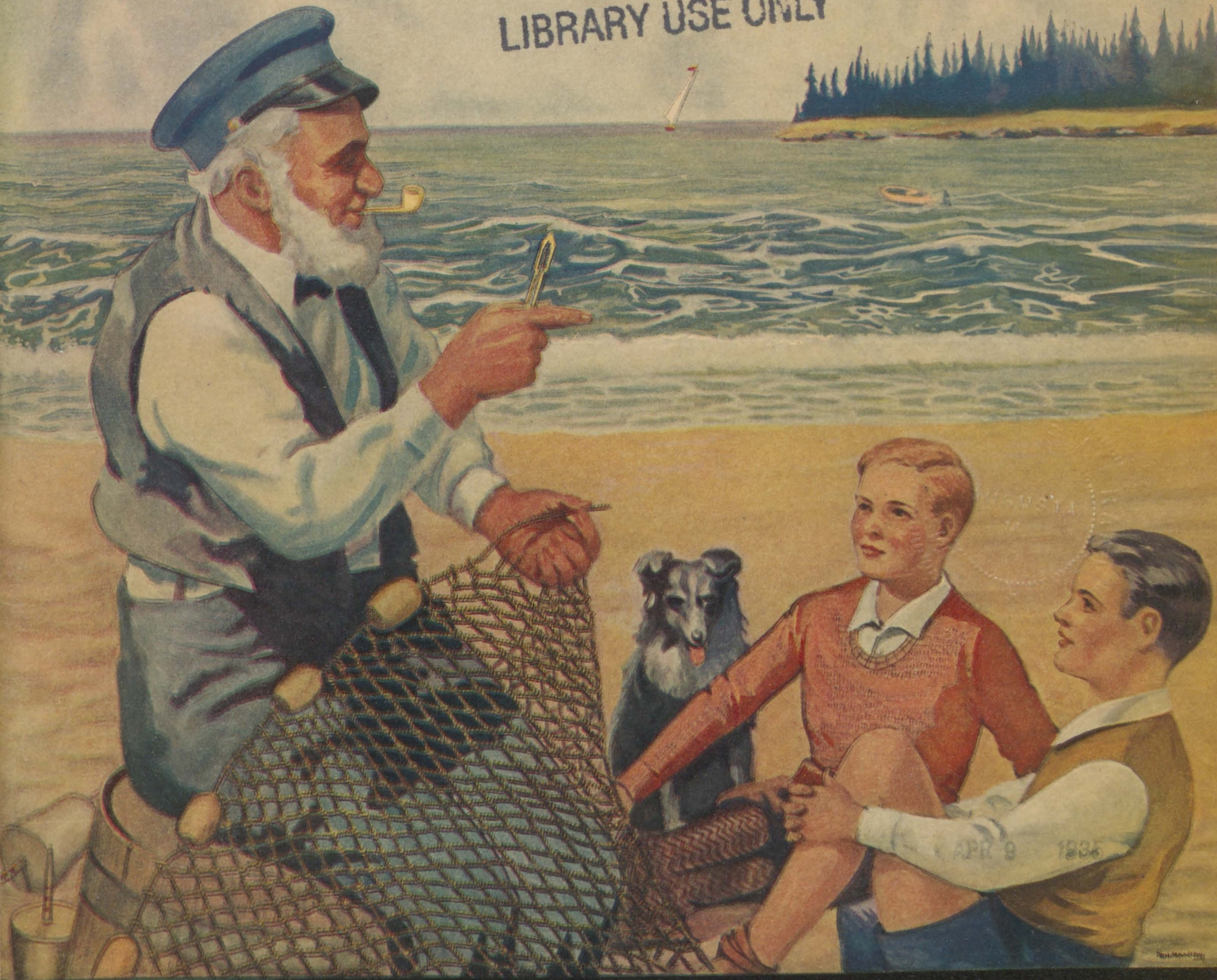
Maine Development Commission and Coe, Harrie B., "Maine: The Land of Remembered Vacations" (1935). *Economic and Community Development Documents*. Paper 153.  
[http://digitalmaine.com/decd\\_docs/153](http://digitalmaine.com/decd_docs/153)

This Text is brought to you for free and open access by the Economic and Community Development at Maine State Documents. It has been accepted for inclusion in Economic and Community Development Documents by an authorized administrator of Maine State Documents. For more information, please contact [statedocs@maine.gov](mailto:statedocs@maine.gov).

# MAINE

*The Land Of Remembered Vacations*  
LIBRARY USE ONLY

D60.5:  
L2053/935  
Copy 1



APR 9 1935

W. H. MANNING

MAINE



# MAINE

## *The Land Of Remembered Vacations*

WHERE AMERICA GREETED THE SUNRISE



On the fine beach shore of Popham was settled in 1607, the first colony in New England under George Popham, thirteen years before the Pilgrims landed at Plymouth Rock.

A re-issue of  
EASTWARD HO  
to MAINE  
And MAINE EXTENDS A  
CORDIAL WELCOME  
Compiled by Harrie B. Coe  
Published by the  
Maine Development Commission  
Augusta, Maine  
1935.



*Long shelving beaches  
offer surf bathing  
and sun bathing*

# Motherland

ROBERT REXDALE

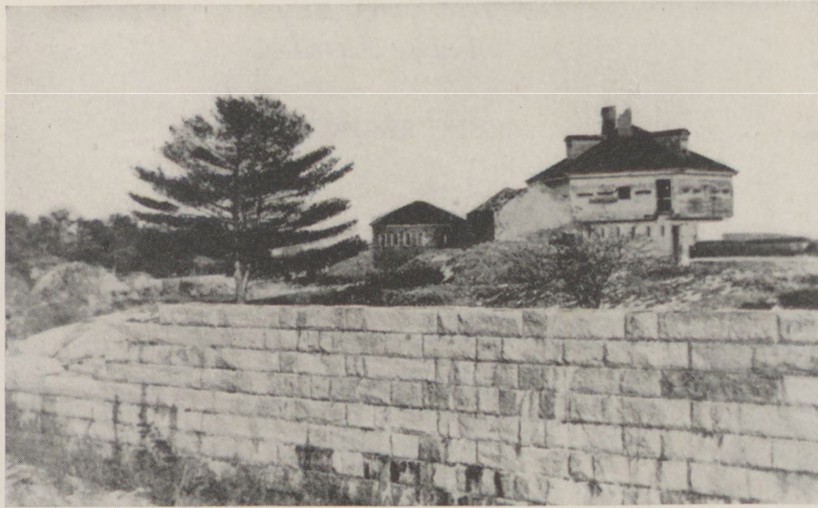


TONIGHT across my senses  
 Steals the perfume of the pines,  
 O sweeter far to homesick hearts  
 Than drafts of fragrant wine,  
 Again uplift the seagirt isles  
 Where sylvan beauties reign,  
 And dreams of thee come back to me,  
 O Motherland of Maine.



Bareheaded,  
 brown and happy  
 children build  
 castles in the air  
 and strong,  
 sturdy bodies  
 and keen minds  
 under the benefi-  
 cent effects of  
 ultra-violet sun  
 rays.

At Your Service—write us what you want—we'll find it for you



Block House, Fort McClary, Kittery



The Pepperell Mansion — Kittery

Pepperell Mansion, Kittery Point, relic of Colonial days, erected in 1682 by Colonel William Pepperell, a rising young man of the day.

Here in 1696 his son, the famous Sir William Pepperell, was born.

Sir William willed the property to his grandson, William Sparhawk (Pepperell) on condition that he take his name. It was confiscated at the time of the Revolution and later purchased by Major Thomas D. Cutts who planted the great elms whose branches shade its ancient walls.

## Down East:

The map of Maine is a magic thing, for though it has the unattractive appearance common to maps—black, crooked lines wandering over a flat, white surface—it serves as a sure guide to places where the traveler may revel in scenic beauty, delightful recreation and comfortable living.

Whatever the point of entry at which one crosses the border into Maine, he senses at once that he is in a state whose welcome is cordial and sincere and whose desire is to anticipate and gratify every wish of the visitor.

Modern motor roads, representing the finest achievements in highway engineering, extend to all parts of the state. Whether one wishes to feel the sting of surf spray on his face and smell the tang of sea winds in his nostrils, whether one wishes to fill his lungs with the pine-scented air of fir-shingled mountains, whether one wishes to drive a golf ball down some enchanting fairway to a perfect green, volley a tennis ball on courts built for championship play, cast a fly in pools and streams where voracious game fish await, ride a horse along beauty-bordered trails, dance and dine in brilliant company, climb challenging crags, paddle alluring waterways, view historic scenes of battle and romance, explore rows of picturesque wharves and weather-beaten fish houses, match wits and marksmanship against the wariness of furred and feathered creatures of the woods, loaf and daydream in the solitude of the wilderness; whatever the longing, here its realization may be enjoyed.

**Just drop us a line for any information you would like to have to round out your vacation plans. Our pleasure is to help you secure the greatest possible value for your vacation budget.**

**Address:**

**MAINE DEVELOPMENT COMMISSION,  
Dept. H, State House, Augusta, Maine**







York Harbor Abounds in Summer Activities



### Why Maine is Cool

Down from the melting glaciers and icebergs of the North country a cold Arctic current sweeps around the point of Cape Sable in Nova Scotia, up through the Bay of Fundy and about thirty miles off the Maine coast, joining the Gulf Stream. After passing Cape Cod, the Gulf Stream bears out to sea, past Newfoundland, on its way to the European coasts. It has a uniform temperature of 72° and is sixty miles wide. The Arctic current eddying in the Gulf of Maine and flowing as it does inside the Gulf Stream lowers the temperature of the whole region. These Arctic currents have for



York Harbor

### Surf and Sun Bathing

The Maine coast from Kittery to Cape Elizabeth presents a series of wonderful surf bathing beaches so shelving that when the tide is out, it exposes a long stretch of white sea sand which draws the rays of the sun and becomes thoroughly warmed. As the tidal waters flow back over this sand the water is heated to a temperature which makes it comfortable for sea and surf bathing.

Sunshine has energizing and bactericidal properties and provides natural heliotherapy distinctly beneficial in building up health and disease resistance.



Monhegan

centuries beaten against the coast till the whole shore is ragged like a fringe. Ridges of bare rock jut far out into the sea, ending in reefs and rocky islands, rough hewn by the hand of nature from the rocky ribs of Maine.

Between these promontories, the neighboring ocean thrusts its waters, lapping its way with ceaseless motion farther and still farther inland, until the powerful tides have woven passages for the sea through the outer fringe of headlands, and pressing onward have left their fragments behind in the form of countless islands which dot the coast in every direction.

"Bays resplendent as the heavens,  
Starred and gemmed by a thousand isles."

York Short Sands





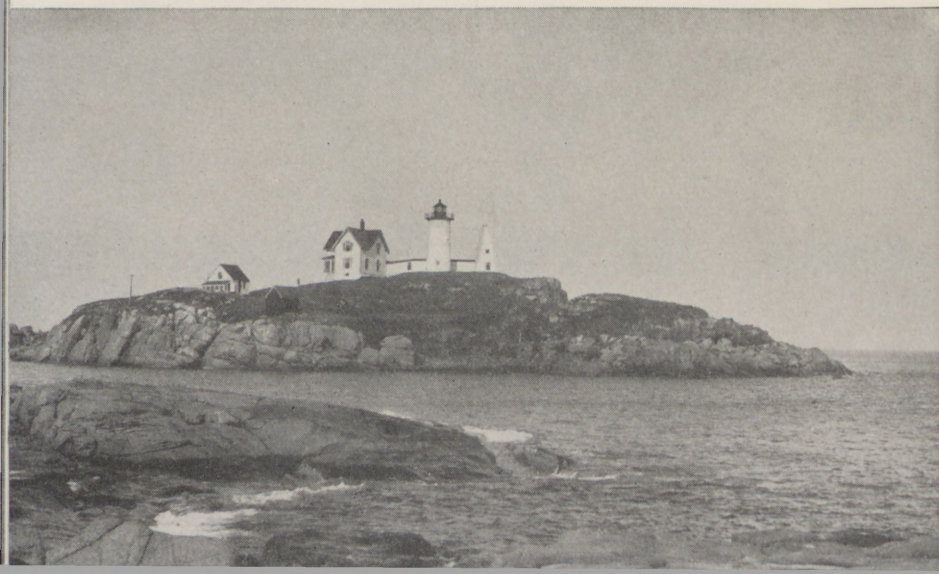
The Beach at Ogunquit

### Early History

The name Maine is first found in documents of 1639.

The first chartered city in America was founded by Sir Ferdinando Gorges in 1641 and was called Gorgeanna and was located in the present town of York. A form of government was set up consisting of a Mayor and a Board of Aldermen and the seat of a Bishop was established and thus became the capital of the Province of Maine. In 1652 the Massachusetts Bay Colony diplomatically took over the Province of Maine and changed the name of Gorgeanna to York and at about that time the jail was built at York for confining prisoners.

The Nubble—York

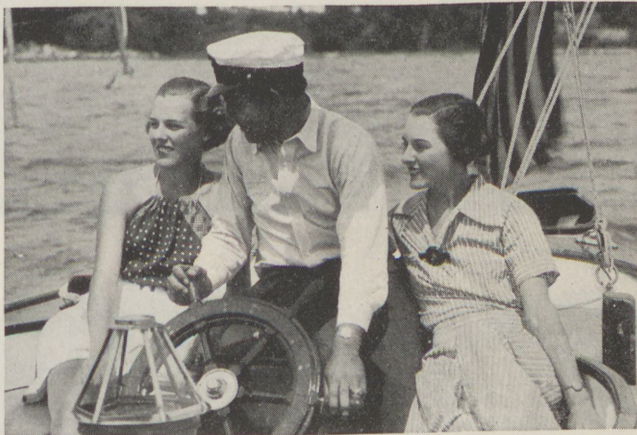


Tuna Fishing With Rod and Reel





### 2486 Miles of Seacoast



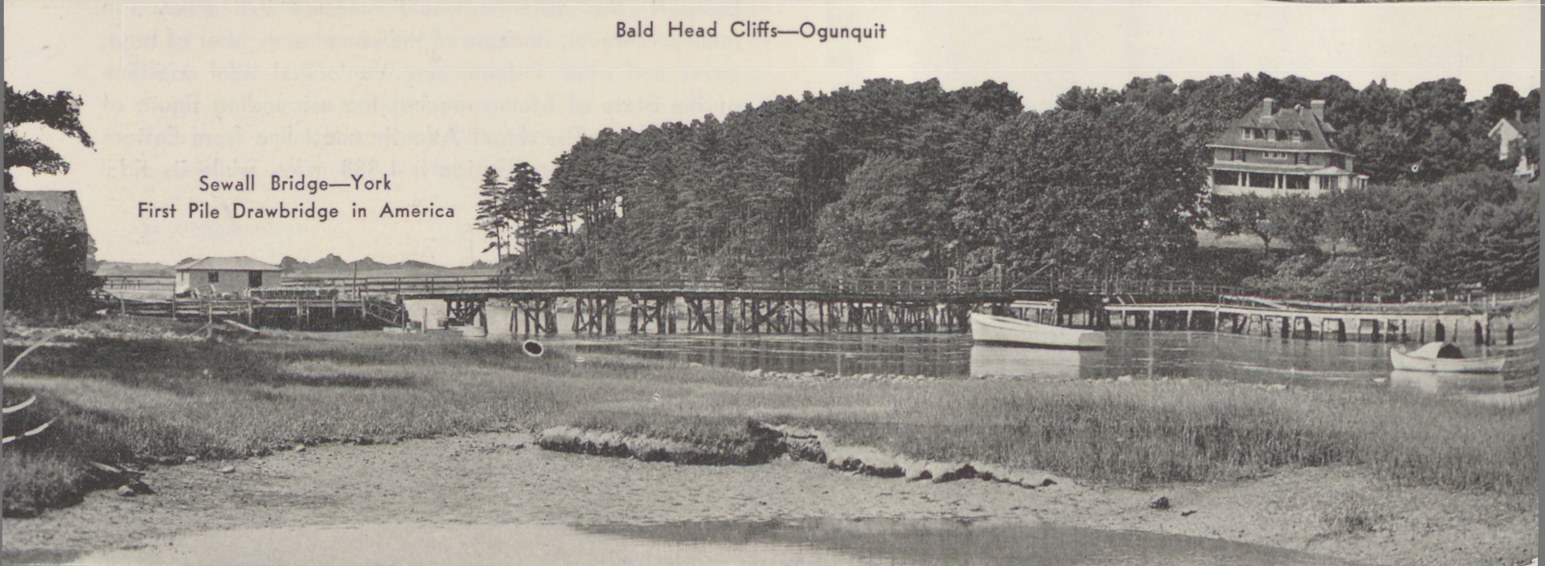
Maine has the unique distinction of having within its own boundaries almost one-half of the tidal line of the Atlantic coast in the United States. In a straight line, "as the bird flies," from its most westerly point at Kittery to its most easterly point at Quoddy Head, just beyond Eastport, the distance would measure 278 miles. In reality, however, because of the immense number of bays, coves and other indentations, the actual tidal coastline of the State of Maine reaches the astounding figure of 2,486 miles. The direct Atlantic coast line from Eastern Maine to Southern Florida is 1,888 miles, while its tidal line is 5,565 miles.

### Deep Sea Fishing





Bald Head Cliffs—Ogunquit



Sewall Bridge—York  
First Pile Drawbridge in America

Although restored in 1933 it still appears much as it did when 64 Minute Men marched across it April 21, 1775 on their way from Maine to Boston to fight the British in the Revolutionary War. It was erected in 1761 by Major Samuel Sewall. Originally called a "swing" bridge. A bronze tablet set in a boulder nearby tells its history.



The Bathing Hour at Kennebunk Beach





Along Shore—Kennebunkport

Booth Tarkington's Boat-Studio—Kennebunkport



Booth  
Tarkington  
says:

"Vacation at Kennebunkport means good fun, golf, tennis, dancing, sailing, fishing, surf-bathing; but, what's more important, it means good health and rested nerves.

"Kennebunkport has not only the sea and the great crescent of white beach and brown rocks, it has a lovely river that winds inland between wooded banks and, near the harbor mouth, gives the canoeist or sailor of light craft, glimpses of such exquisite gardens as Margaret Deland's and that of the painter, Abbott Graves."

The Booth Tarkington Home—Kennebunkport





Sun Bathing Hour



Home of Artist Abbott Graves—Kennebunkport





Sun and Surf Bathing at Old Orchard Beach

### The Desert of Maine

The Desert of Maine is said to be the bed of a pre-historic lake, since dried up. It may be a result of the glacial period. Buried under this desert is the once fertile farm of the Tuttle family. About fifty years ago this fine sand had broken through the turf so that only a small patch about thirty feet square was visible. It now covers many acres. It is about two miles off No. 1 Atlantic Highway.





Grand Beach

Sun, surf and  
sand bathing  
are what the  
doctor  
ordered



The Beach at  
Biddeford Pool



Cottage Life Along Shore



Cottagers Landing at the Wharf



Casco Bay and Islands



"KENARDEN LODGE" HOME OF MRS. JOHN DORRANCE OF CAMDEN N. J. AT BAR HARBOR

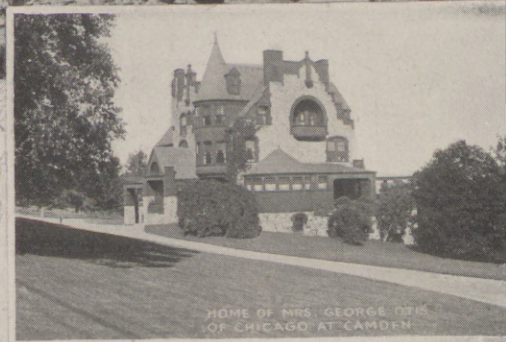


"CHATWOLD" HOME OF MR. & MRS. JOSEPH PULTZER OF ST. LOUIS AT BAR HARBOR

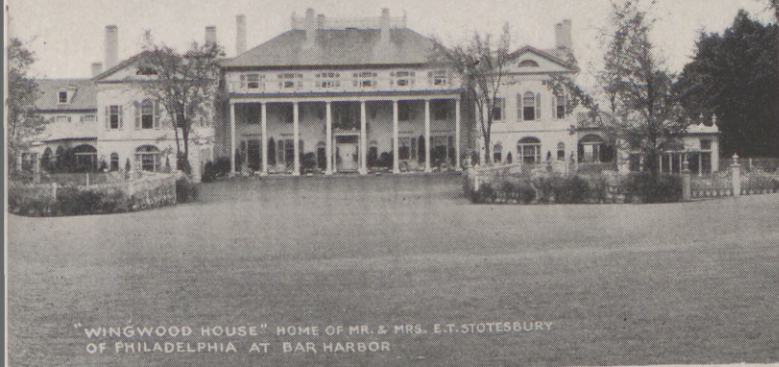


HOME OF MRS. MARY CURTIS BOK PHILADELPHIA AT CAMDEN

HUNDREDS OF BEAUTIFUL SUMMER ESTATES BORDER MAINE'S COAST



HOME OF MRS. GEORGE OTIS OF CHICAGO AT CAMDEN



"WINGWOOD HOUSE" HOME OF MR. & MRS. E.T. STOTESBURY OF PHILADELPHIA AT BAR HARBOR



"SONOCEE" HOME OF MR. & MRS. ATWATER KENT OF PHILADELPHIA AT BAR HARBOR



"BUONRIPOSO" HOME OF MRS. SHEPARD FABBRI OF NEW YORK AT BAR HARBOR



"EGONIS" HOME OF MR. & MRS. WALTER GRAEME LADD OF FAR HILLS, N.J. AT BAR HARBOR

Portland Head Light was erected in 1790 by order of General George Washington, President of the United States. It is open to visitors.

### On Your Way

In Longfellow Square, Congress Street at State, Portland, are the headquarters of the State of Maine Publicity Bureau with offices and a most attractive information bureau and rest room. Its attendants will answer any question you may ask, map out your route and plan your trip in all its details. Its service is statewide, its resources are at your command and you are invited to make full use of all it has to offer you in resort service, for which no charge is made.



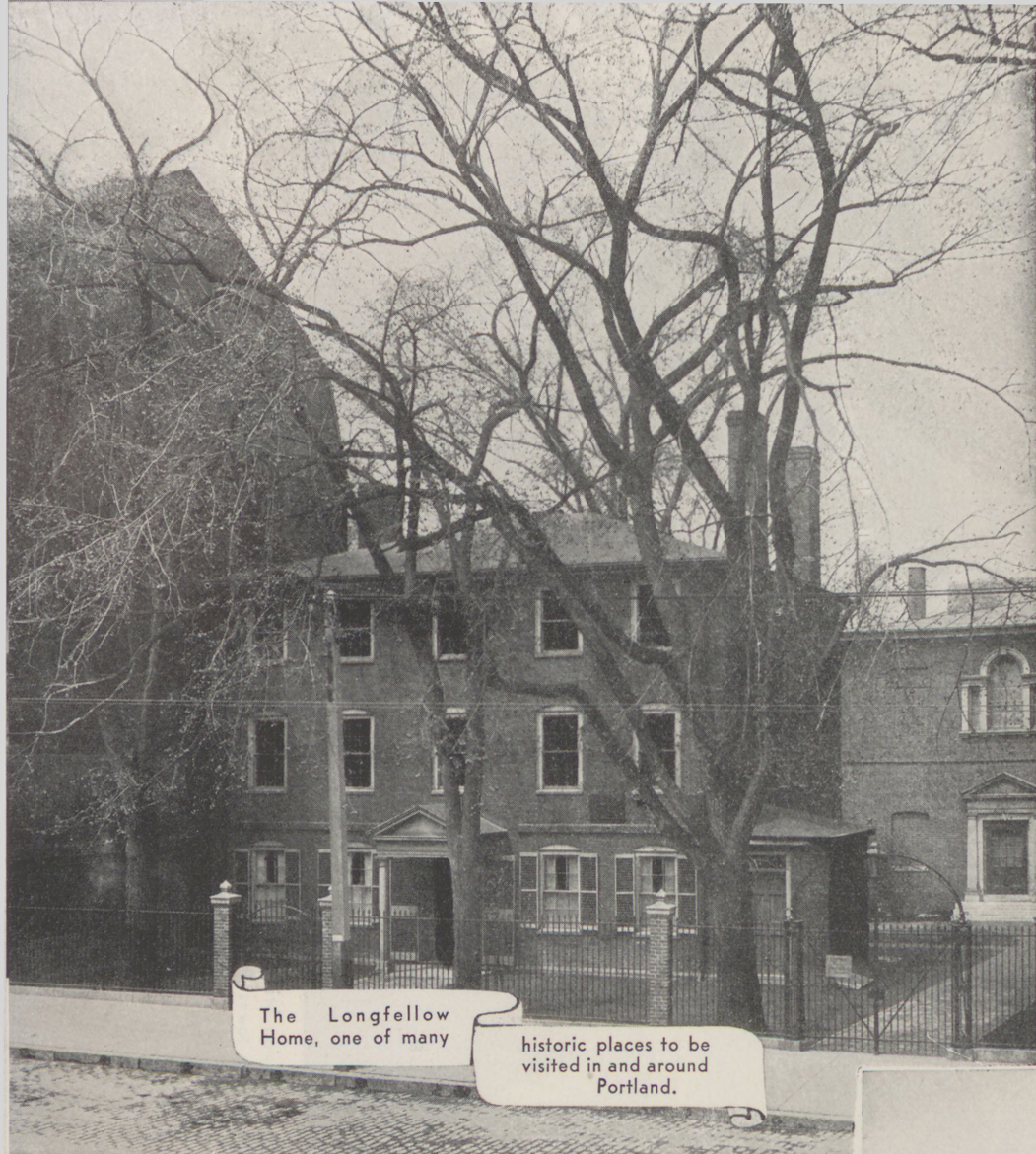
© RALPH BLOOD

Who wouldn't go  
sailing — bathing in  
Maine !!





The Waldo-Hancock suspension bridge on coastal route No. 1 over the majestic Penobscot River, connecting the towns of Bucksport and Prospect, 19 miles below Bangor



The Longfellow Home, one of many

historic places to be visited in and around Portland.

### The Longfellow Home and Garden

The Longfellow home on Congress Street near Monument Square, Portland, where he wrote his earlier poem is a museum open to the public. Part of the original garden at the rear of the house is still in existence, maintained by the Longfellow Garden Club.

### Henry Wadsworth Longfellow

The poet Longfellow was born in the Captain Stephenson house on Fore St., corner of Hancock, Portland, while his parents were visiting the bride of Captain Stephenson during the latter's absence on a voyage to the West Indies. Just around the corner on Hancock Street, the house in the background, is the birthplace of Thomas B. Reed, the great parliamentarian.





Portland harbor from  
Fort Allen Park,  
Eastern Promenade.



Baxter Boulevard,  
Portland, skirts the  
wild duck sanctuary.

## PORTLAND, MAINE

Often I think of the  
beautiful town

That is seated by the  
sea;

Often in thoughts go up  
and down

The pleasant streets of  
that dear old town,  
And my youth comes  
back to me.

—My Lost Youth  
Henry W. Longfellow

Moonlight on  
the Atlantic





Quillcote at Hollis,  
where  
Kate Douglas Wiggin  
wrote "Rebecca of  
Sunnybrook Farm."



"The Country of  
the Pointed Fir" was  
written by Sarah  
Orne Jewett at her  
home in South Ber-  
wick.



Sarah Orne Jewett Home, South Berwick, Maine



Innumerable rockbound islands  
dot the coast of Maine.

The Harriet Beecher Stowe  
house in Brunswick where she  
wrote "Uncle Tom's Cabin," "The  
Pearl of Orr's Island" and other  
stories.



Elijah Kellogg laid the scenes  
of the "Whispering Pine," in  
the town of Brunswick, the seat  
of Bowdoin College.



Home of the Pearl of  
Orr's Island.



### Maine Separated from Massachusetts

One hundred and more years ago an old country squire in Woolwich, Maine, called upstairs one cold winter morning "Betsy, throw down my best boots, I've got to go to Boston and help William King make a State."

In 1819 separation from Massachusetts was voted for with a majority of 10,000 out of about 30,000 votes cast. And in 1820 Maine became a State. William King was its first Governor and helped to make the Constitution.



Graves of the Captains of the "Enterprise" and "Boxer" in Eastern Cemetery, Portland.

### The War of 1812

Between Monhegan Island and Pemaquid Point on the mainland was fought the historic sea battle between the English brig "Boxer" and the American brig "Enterprise" in the war of 1812, the graves of whose commanders are in the Eastern Cemetery, Portland.



### Ancient Shell Heaps

At the mouth of the Damariscotta River are great deposits of oyster shells, "shell heaps," so-called. Gilbert of the Pop-ham Colony wrote home in 1607 "The shells are horizontally disposed, ends to the shore; seldom in pairs, but lying on the broad surface, shell within shell."

In general appearance these shell heaps are identical in like deposits on the Northern shores and the coast of Denmark; and



Waves crash with  
thunderous noise on  
rock-rimmed shores.



The Shell Heaps at Damariscotta

it is conceded that they are tangible evidence of the visit of the Norsemen to these shores long before the voyages of Columbus.

In the deposits have been found bits of charcoal, bones of fish, animals and even of the human frame, with stone implements and pieces of pottery. Many of the larger deposits have been disturbed and removed for commercial purposes.





Camden Mountains and Inner Harbor



Lake Megunticook from Maiden Cliff—Camden



Monhegan Island was a rendezvous in 1605 for fishing fleets from the Old World. Capt. John Smith made it his base of exploration in 1614. Several miles out to sea it is a popular summer colony of artists and writers.

Off  
on  
a  
picnic





Wiscasset is noted for its delightful Colonial architecture and charming doorways.

Just after you cross the bridge at Wiscasset are seen the old redoubt of an earthwork fortification and the blockhouse of Fort Edgecomb. More appealing perhaps is the "Marie Antoinette House" on the Sheepscot River; a mansion of simple colonial architecture which we are told was erected by a handful of the faithful adherents of the unfortunate French Queen to serve as a haven in the New World, but which she never occupied.



The Marie Antoinette House



Old Powder House, Wiscasset, 1813



Thomaston was the home town of General Henry Knox, Washington's chief of artillery, Secretary of War from 1785 to 1795, and founder of the Order of Cincinnati. His colonial mansion "Montpelier" stood close by the present site of the railroad station, which is a part of the old estate.



Owl's Head at Entrance of Rockland Harbor



Birthplace of Vice  
President Hannibal  
Hamlin, Paris Hill.

Maine's Sons and Daughters have attained National Prominence  
WHAT ONE MAINE COMMUNITY DID—MANY OTHERS HAVE DONE EQUALLY WELL

PARIS HILL ROLL OF HONOR

*Federal Vice President, with Abraham Lincoln, Hannibal Hamlin; Postmaster General, Horatio King; Comptroller, Albion K. Parris; U. S. Judge, Albion K. Parris; Two U. S. Senators, Albion K. Parris, Hannibal Hamlin.*

*Twelve Representatives to Congress Levi Hubbard, Enoch Lincoln, Timothy J. Carter, Virgil D. Parris, Hannibal Hamlin, Rufus K. Goodenow, Elbridge Gerry, Charles Andrews, Robert Goodenow, Charles W. Walton, Sidney Perham, Reuel Washburn.*

*Brig. General William K. Kimball*

*State Five Governors Albion K. Parris, Enoch Lincoln, Hannibal Hamlin, Virgil D. Parris (acting), Sidney Perham.*

*Six Judges of the Highest court Albion K. Parris, S. J. C.; Charles W. Walton, S. J. C.; William Wirt Virgin, S. J. C.; Thomas H. Haskell, S. J. C.; Joseph G. Cole, District; Stephen Emery, District.*

*Attorney General Stephen Emery.*

*Three Presidents of Maine Senate Virgil D. Parris, William Wirt Virgin, Warren H. Vinton.*

*Three Speakers of Maine House Hannibal Hamlin, Charles Andrews, Sidney Perham.*

*Secretary of State Sidney Perham.*

*Executive Council Thomas Crocker.*

*Major General Levi Hubbard, State Militia.*

Damariscotta  
Lake





In addition to the several state golf championships weekly open handicap matches are held on a different course each Saturday throughout the season. Besides the Maine State Golf Association there are the Women's State Golf Association and the Maine Senior Golfers' Association.

### Maine Offers Much in Golf

With its 100 golf courses, nearly all open to visiting players upon payment of the customary greens fee, Maine is an ideal playground for the golfer. The golfing season opens annually with a state tournament on April 19 and continues well into November.

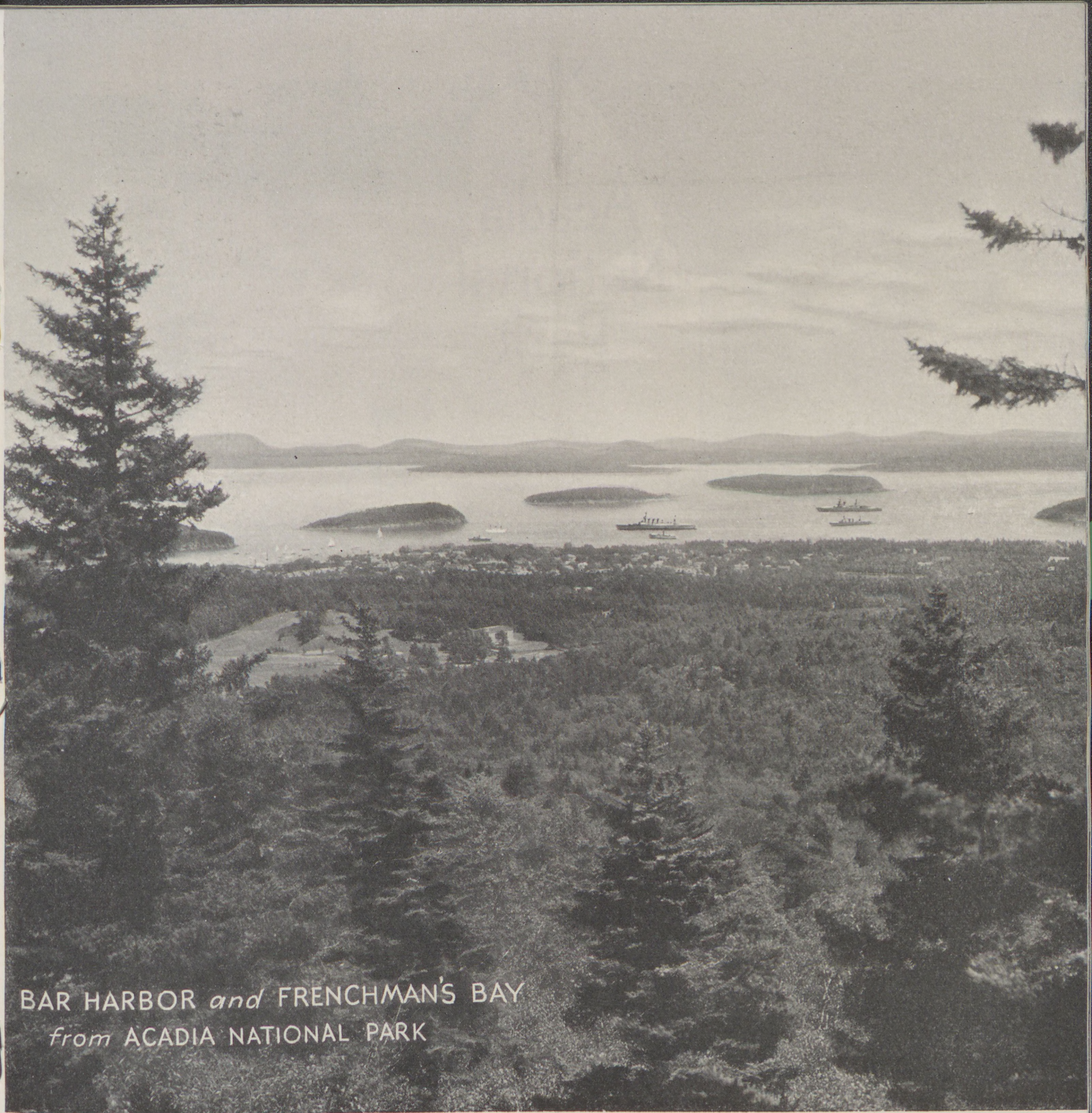




Amphitheater at the Camden Library

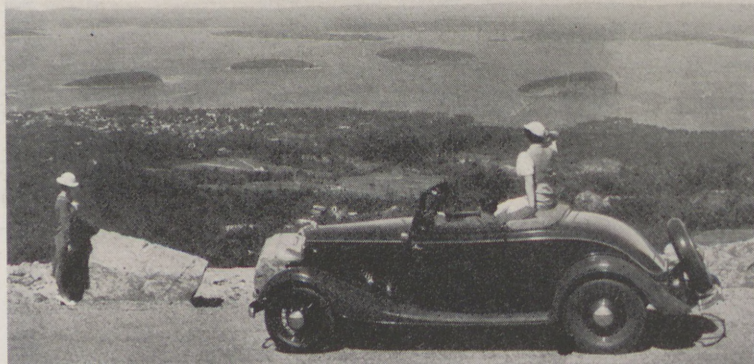


Camden Harbor from the Library Grounds



BAR HARBOR *and* FRENCHMAN'S BAY  
*from* ACADIA NATIONAL PARK

# Acadia National Park





It is signally appropriate that Mount Desert Island, Maine, should have been selected by the United States Government for the site of the first National park that the United States has established beside the ocean, also the only one east of the Mississippi River and named Acadia National Park, passed forever into the control of the nation.

The mountains literally come down to the sea, presenting contrasts of towering heights reflected in the blue ocean such as are seldom seen on the Atlantic Ocean.

Diplomats and other distinguished foreign visitors lend to Bar Harbor and other places on the island the eclat and the vivacity to youthful society that the presence of their entourages gives.

Many of the residences are superb estates owned by people whose names are household words.



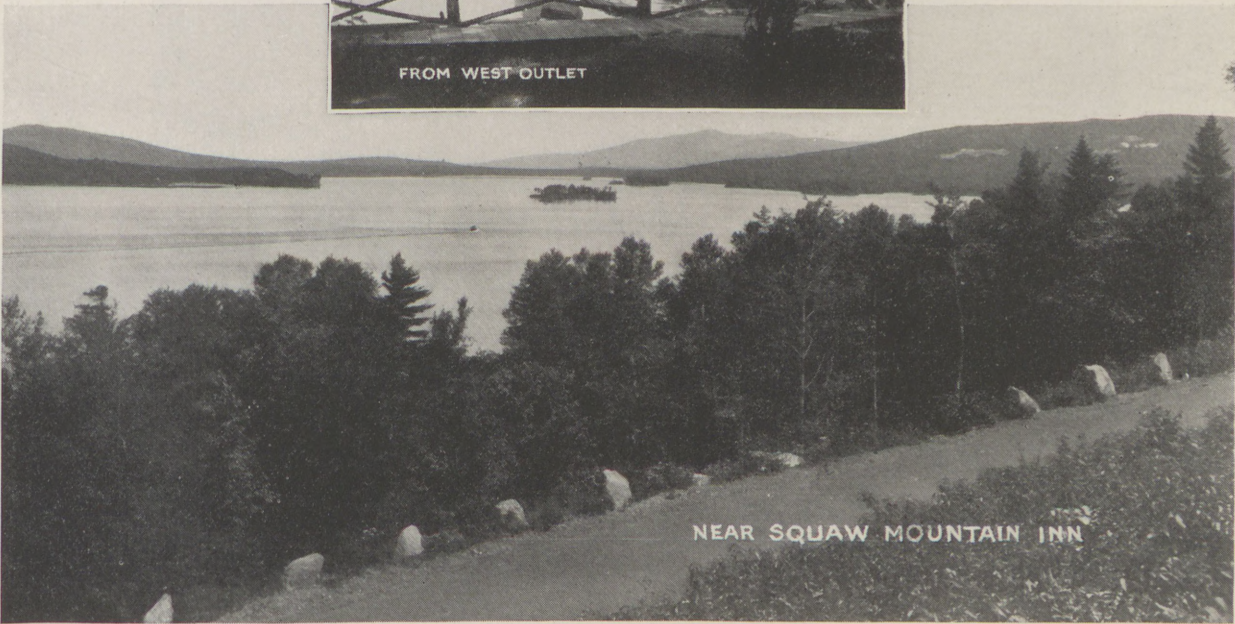
*Bar Harbor Yacht Club Pier*



Kineo and Kineo Mountain



FROM WEST OUTLET



NEAR SQUAW MOUNTAIN INN

The Lower Bay from Greenville

Moosehead Lake—Forty Miles Long, Twenty Miles Wide—  
The center of a great recreational region

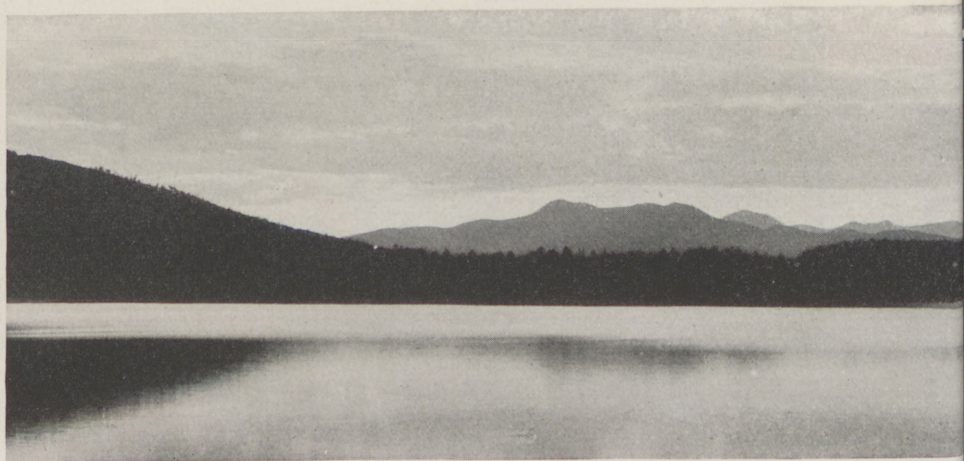




Lake Maranacook



Lake Kezar



Lovewell Pond



LITTLE WILSON



WISSATAQUOIK



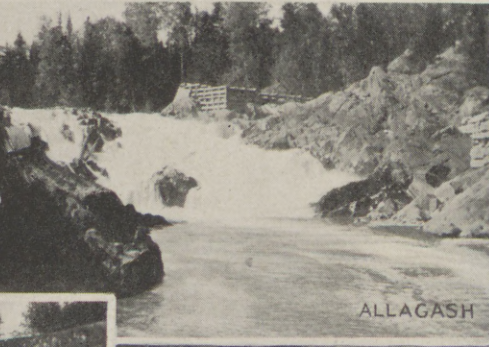
MOXIE



GRAND FALLS



LITTLE NIAGARA



ALLAGASH



SMALLS FALLS



THE TWINS



SCREW AUGER

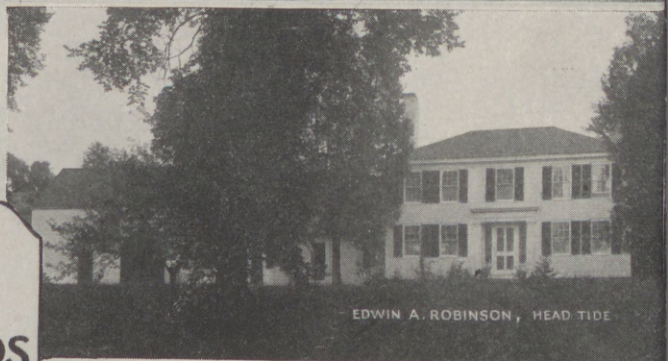
**MAINE'S**  
5000  
RIVERS  
AND  
STREAMS  
*present numerous*  
**WATERFALLS  
AND  
CASCADES**



EMMA EAMES, BATH



C. A. STEPHENS, NORWAY



EDWIN A. ROBINSON, HEAD TIDE

HOMESTEADS  
OF A FEW  
of  
MAINE'S MANY  
NOTABLES



LILLIAN NORDICA, FARMINGTON



HARRIET BEECHER STOWE, BRUNSWICK  
WHERE UNCLE TOM'S  
CABIN WAS WRITTEN



ARTEMUS WARD, WATERFORD



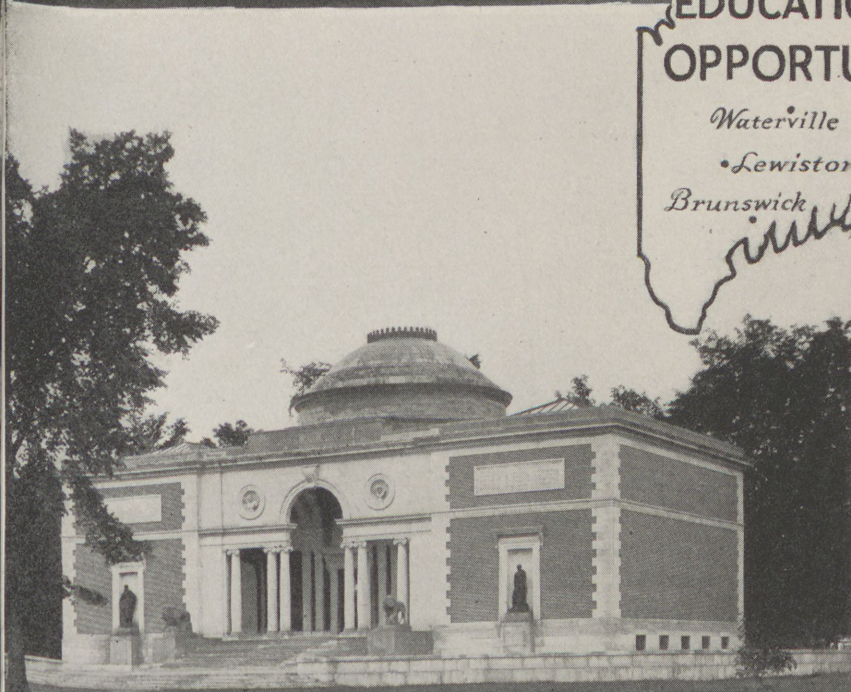
LYRUS H. K. CURTIS, PORTLAND



CAMPUS AND CHAPEL  
BATES COLLEGE, LEWISTON



LIBRARY  
UNIVERSITY OF MAINE, ORONO



WALKER ART BUILDING  
BOWDOIN COLLEGE, BRUNSWICK



COLBY COLLEGE  
MEMORIAL HALL



FROM TOGUE POND



FROM PENOBSCOT WEST BRANCH

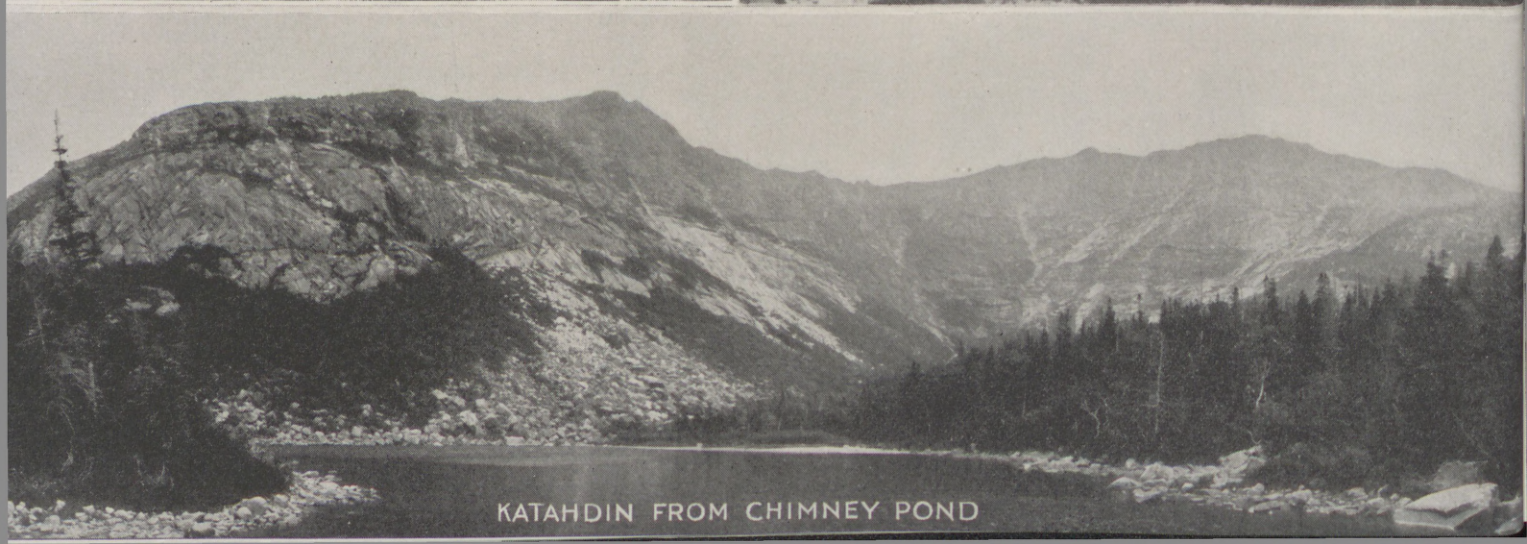
MOUNT  
KATAHDIN  
ONE MILE HIGH



FROM TOGUE POND



THE KNIFE EDGE



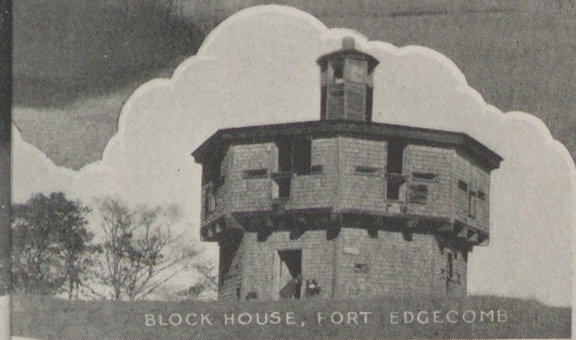
KATAHDIN FROM CHIMNEY POND



FORT KNOX, BUCKSPORT

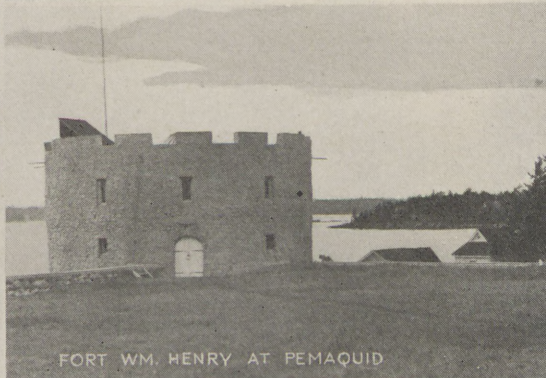


MCINTIRE GARRISON HOUSE, YORK

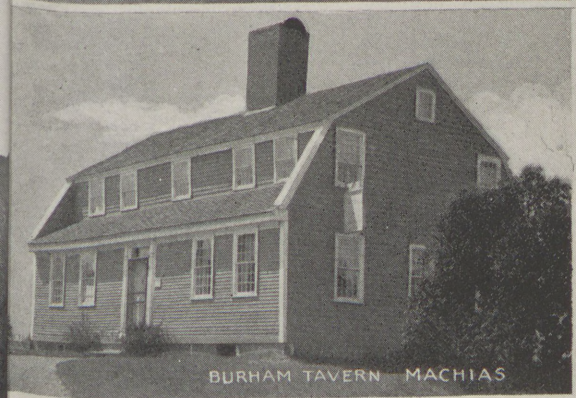


BLOCK HOUSE, FORT EDGECOMB

# EARLY MAINE FORTS AND GARRISONS



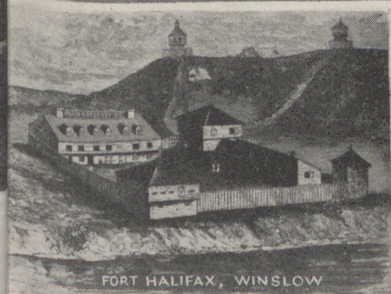
FORT WM. HENRY AT PEMAQUID



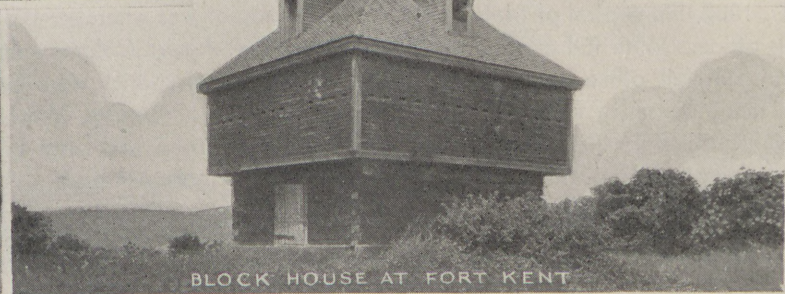
BURHAM TAVERN MACHIAS



FIRST THANKSGIVING IN NEW ENGLAND



FORT HALIFAX, WINSLOW



BLOCK HOUSE AT FORT KENT



FOUNDATION OLD FORT EDGECOMB



FORT WESTERN AT AUGUSTA



The Black Mansion

About A. D. 1800, the capital of Maine east of the Penobscot was wherever the Bingham Land Agent had his office. With the coming in of the century that Agent, Colonel John Black, moved to Ellsworth not only his office but also his house and his antiques, which were even then priceless treasures, many pieces of beautiful old furniture, and relics of George Washington. They were largely inherited from Mrs. Black's father, General Cobb, who had been on Washington's staff and whom Colonel Black had succeeded in the Bingham Agency.

It led to the construction in Ellsworth of the now famous and much visited Black Mansion House and Estate which after a century and a quarter of private ownership was left in 1928 by George Nixon Black as a public park and museum.

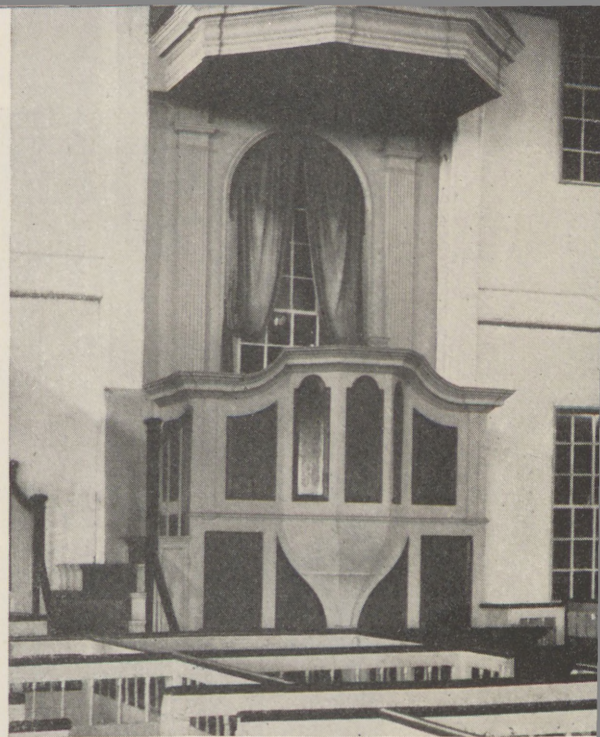
The Black Mansion is one of the very few examples in America of a home which has never been pulled apart. Today the Black Mansion is just the same as when Colonel John Black moved into it. It is a precious monument which could not be duplicated north of Mason and Dixon's Line, and has nothing to fear in comparison with the beautiful Virginia mansions.



Beautiful Staircase, Black Mansion

### The Black Mansion

One could enter it tomorrow, sleep in its beds, dine at its Duncan Phyfe tables, sit in priceless chairs; lunch off Sheraton and Chippendale; take tea out of priceless Spode and Royal Dresden; drink from glass of the indefinable tints of a century and more ago. One could walk about in a kitchen whose tables are worn deep by the housewifery of the past and drink from beakers that are centuries old, constituting an unique example of a home, of exquisite richness and taste, just as it was in the beginning. The park in which it sits is like an English home-estate, its stables and coaches are unique; its trotting park, its sun-dialed gardens, its tomb and above all its remarkable furniture are all of value as kept together.

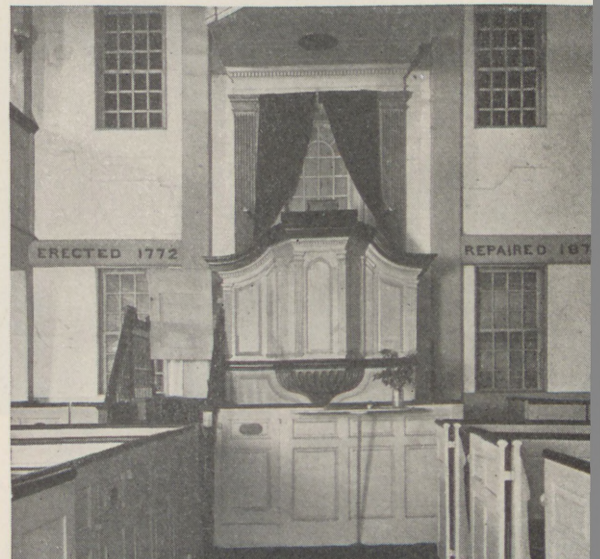


The Old Church at Alna—Built in 1789

Maine has many churches of historic and architectural interest. One of the finest buildings of its type of architecture now standing in New England is the old church at Alna built in 1789. The big beams supporting the galleries were hewed by hand and the marks of the axe are plainly visible. Handmade nails were used in its construction and it is said that loopholes were provided above the first tier of windows so that with the windows heavily shuttered the structure could be easily used as a blockhouse in case the settlement was attacked. The church has an adjustable pulpit which could be raised or lowered to correspond with the height of the preacher and in the structure is a large leather bound Bible printed in 1791.

Another church of interest is that at Walpole. Both these churches are within a ten mile radius.

The Church at Walpole—Built in 1772








Long Lake at Naples

The Sebago—Songo River—Long Lake Section enjoys great popularity



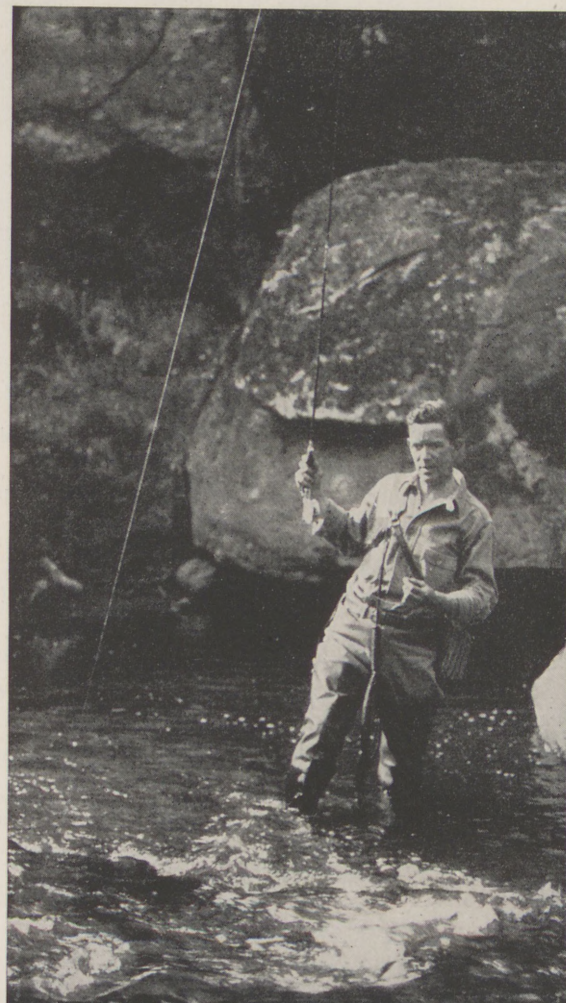
Sebago Lake at South Casco



"Dinner out"  
is a pleasing  
vacation  
diversion.

### Seven Great Chains of Lakes

Specifically, there are seven great chains of lakes in Maine; the Rangeley series, with an area of 90 square miles, drained by the Androscoggin River; the Moosehead series—Moosehead Lake, forty miles long and one of the largest lakes in the United States wholly within the confines of any one State—forming the headwaters of Kennebec River; the Belgrade chain of seven large lakes in Central Maine and whose waters flow into the Kennebec River; the Penobscot series, including Chesuncook and its surrounding lakes on the west, Allagash, Chamberlain and others on the north—with the Seboeis farther east, all flowing into the east and west river branches of the Penobscot; the Schoodics, in the southeast, drained by the St. Croix, which separates Maine from New Brunswick, and the chain of lakes forming the headwaters of the St. John and its tributaries. And there are smaller lakes in every county—the equivalent of one to every 20 square miles.





The Belgrade Region offers a variety of vacation pleasures.

## Hunting

That wise and wary game bird—the ruffed grouse, commonly called the partridge, is found generally all over Maine. You may have shot quail, ducks and turkey, but that's all juvenile compared with grouse shooting—for ruffed grouse are the smartest birds that fly. Woodcock are plentiful—much thicker nearer the coast.

A good dog will help a lot in locating partridge and is essential in woodcock hunting.

**Deer and Black Bear are numerous in Maine and Competent Guides will help you locate them**

The hunting season varies by counties and hunting is best after the first snow. The northern and south-eastern counties perhaps yield the best big game shooting and nearly every section can be reached by automobile.

Free copies of game laws, advice on best shooting grounds, guides, etc., are cheerfully furnished and will be mailed to you on request.

Maine with its clear, sparkling days and snappy nights, its wonderful air, and its almost continuous covering of wooded land offers you a hunting trip never to be forgotten. Come and see!





The First Atlantic Sea Salmon Caught at the Bangor Pool Each Spring is Sent to the President of the United States

### Sea Bird Shooting

Along the Maine coast, which follows a serrated outline for over 2500 miles and in tidal waters which reach deep into the mainland, the water fowl shooter gets "first crack" at the migrating ducks, geese and scoters whether blind, float or point shooting and the absence of elaborate advance baited shooting stands enables him to have his sport at very modest expense.

The predominant bird is the black duck or dusky mallard with occasional teal (both blue winged and green winged), pintails, bluebills, whistlers and geese. Among the outer islands and on the more exposed points the scoters, known locally as "coots," are most numerous.





The Executive Mansion and the Dome of the State House


#### Executive Mansion, Augusta, Maine

A tablet in the front hall of the Executive Mansion bears this inscription: "This house and the land on which it stands was the home of James G. Blaine and was given to the State of Maine in the name of his grandson, Walker Blaine Beale, First Lieutenant, 310th Infantry, 78th Division, who was born here March 22, 1896, and who fell in France in the St. Mihiel Drive, September 18, 1918."



#### The Capitol at Augusta

Maine's State House is one of the most beautiful in the Country. The corner stone was laid in 1829. It is built of Maine Hallowell granite and the graceful tower was designed by Charles Bullfinch. The female figure that surmounts the dome was designed by W. Clark Noble of Gardiner, Maine.



*The Cliffs of Kineo  
Moosehead Lake*

### Modern Camp Comforts

There is no longer danger or hardship in the Maine woods, there is not even the necessity of "roughing it." One may, of course, "rough it" if he pleases—some do; but the necessity has passed. Even in the most remote fishing and hunting regions, it is possible to enjoy the comforts and conveniences one would expect in his own home. For in addition to Maine's regular summer hotels, and to its great variety of available private homes, there are at least a thousand public camps—which range all the way from camps luxuriously equipped with open fires, bathrooms, comfortable beds, clean sweet smelling blankets and linen with meals in a central dining hall, to the most modest.



## Canoeing and Camping

Maine's 2,500 lakes and 5,000 rivers and streams offer many opportunities for interesting trips for canoeing and camping. The principal canoe trips are the Allagash River, the St. John River, Fish River Chain of Lakes, Rangeley Lakes Chain, the Grand Lake Chain, the West Branch of the Penobscot, and the East Branch of the Penobscot. These are all located in the wild land district.

There are many shorter trips where guides are not required though permission for camping and building fires must first be obtained from the owner of the property. A law of the State does not allow non-residents to camp and kindle fires in the wild land district unless accompanied by a registered guide or using the public camp sites established by the Forestry Department.



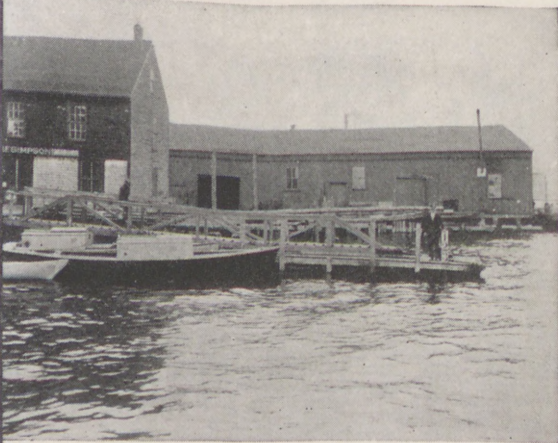




A Sketching Class at Eastport

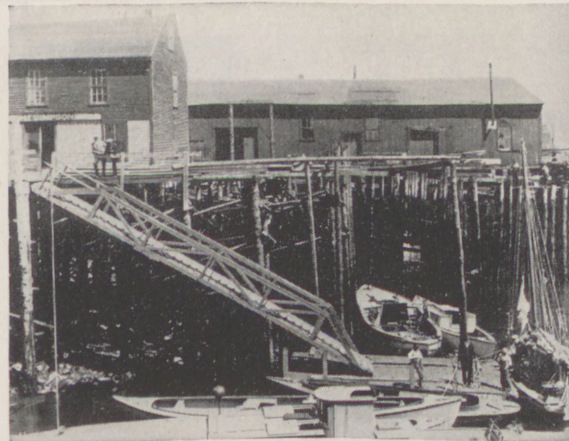
### Art Colonies

Artists of international reputation have found inspiration in the scenic beauties of Maine. Many prize winning canvases of exhibitions at home and abroad have been painted in the State. Art classes of noted summer art schools are everyday occurrences in Maine's seaport towns and exhibits of artists whose names are household words are held each season in innumerable art centers of Maine.

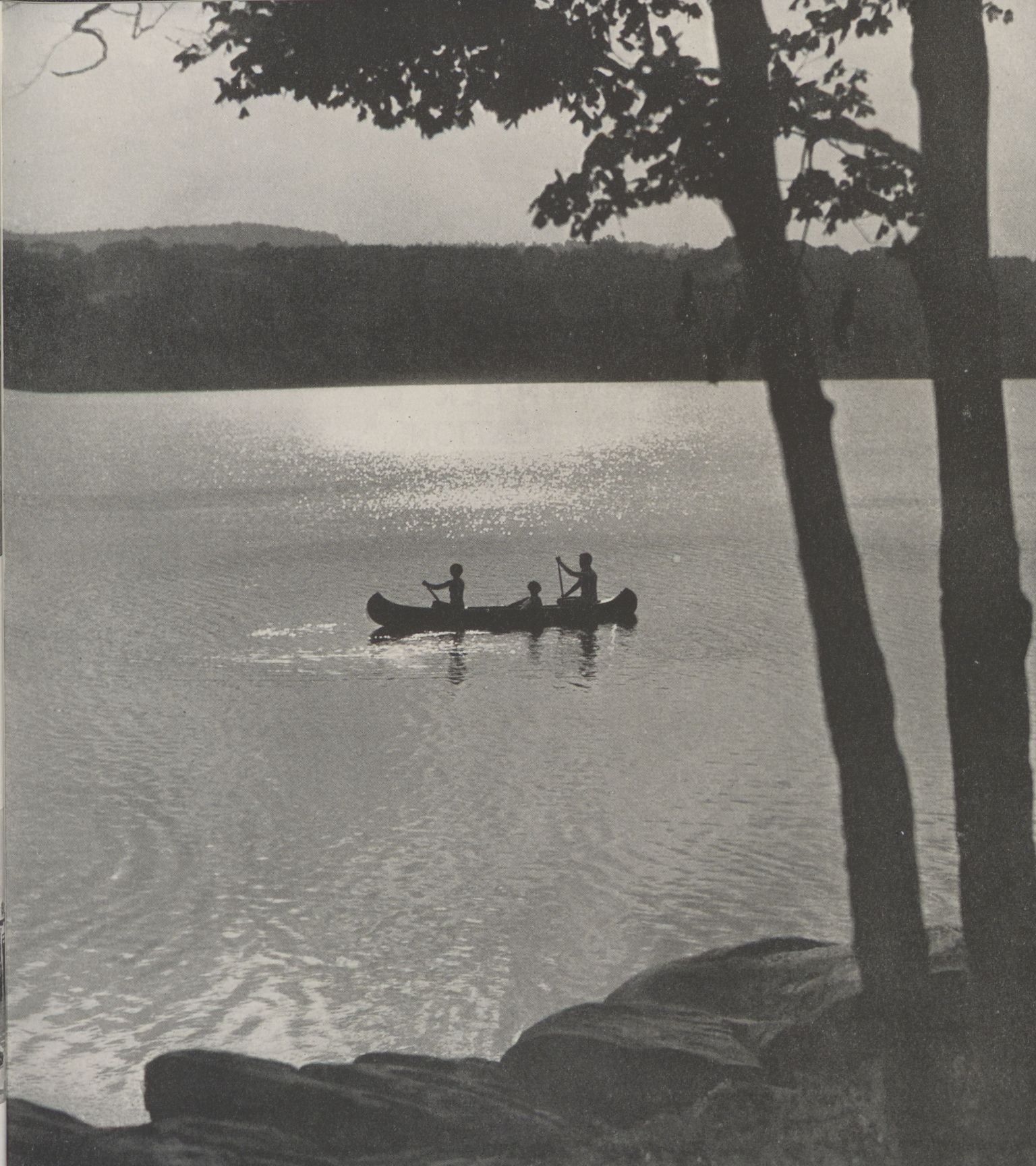


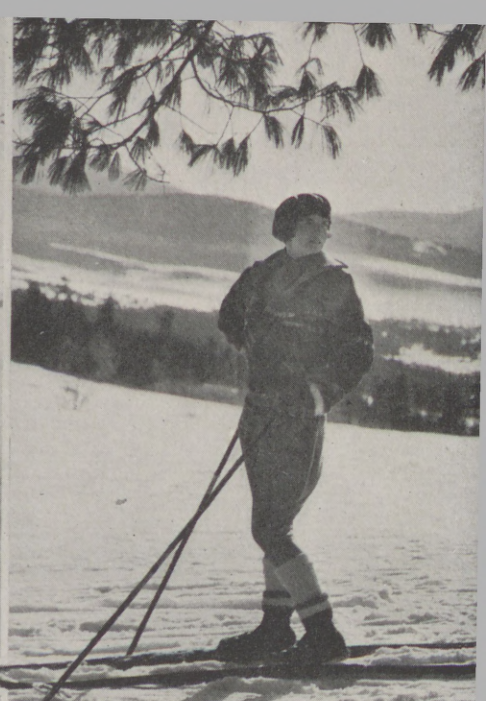
High Water—Eastport

Eastport tides show a rise and fall of 25 feet at certain seasons of the year. The average daily rise and fall is about 18 feet.




Low Water—Eastport





**MAINE**  
**OFFERS**  
**WINTER**  
**RECREATION**






Madawaska Lake—Aroostook County

### Maine's Satisfactory Highways

Maine's 25,000 miles of highways, the equal of the circumference of the earth, have been wonderfully improved, millions upon millions of dollars have been expended in bringing them up to the highest point of perfection. Today Maine boasts a system of State highways and of State aid highways totalling nearly 5,000 miles which has few equals in the country for a state of its size, population and valuation. The highest types of concrete and bituminous macadam roads have been built for long stretches and in addition the towns, themselves, have constructed other thousands of miles of excellent gravel treated surfaces which offer the finest of riding during the summer season.

### Maine is Mountainous

Comparatively few people outside of Maine realize that the State is mountainous in character. Its highest mountain peak is Katahdin, located slightly north and east of Moosehead Lake, and 5,285 feet in height. It is composed of a series of peaks with several lakes and is one of the most remarkable scenic gems to be found anywhere. There are several other mountains in this immediate vicinity. Over through the Rangeley region there are many very high mountains including Saddleback, the second highest in the State, Snow, Bigelow, and farther south Old Speck and Blue. There are 350 or more others with an elevation of 1000 feet or more and designated on the United States Geological survey maps.



Falls of the Androscoggin at Lewiston



Beautiful China Lake, China, Me.

### State Parks

Nine million acres of wild lands—the forestry district—virtually comprises a vast state park, but there are three reserves definitely set aside as state park lands. These are Mount Katahdin Park, 9 square miles of mountain, forest and lake beauty; Fort Knox State Park near Bucksport on the Penobscot River, with an area of 125 acres; Fort Popham and Baldwin Park in Sagadahoc County with an area of 45 acres. The purchase of Fort Knox and Fort Popham in 1923 from the federal government marked the beginning of the establishment of Maine's state parks.



Water Carnival on Rangeley Lake

Bill Nye, the humorist, was born in Shirley, Maine.

Hiram Maxim, the inventor, was born in Sangerville, Maine.

### Summer Educational Opportunities

Summer educational opportunities are numerous and varied in Maine. The University of Maine at Orono and Bates College at Lewiston conduct summer sessions. Normal schools offer summer courses. The Eastern Music Camp at Sidney offers instruction by world-famous musicians. Many other educational facilities are to be found in the scores of boys' and girls' camps. There are several art schools.



THE RANGELEY CHAIN FROM BALD MT.

## All Seasons Comfortable

It used to be that Labor Day was the signal for departure of the summer comfort seeker, but this is no longer so. September is one of this state's finest months. Warm, bright days, with an occasional autumn morning, give zest to the out-of-doors. Each year thousands are added to the number whose plans are made to stay in Maine well into the Fall.

October brings the hues of autumn foliage. Yellows, reds, shades no color chart can show. Bright mountain sides, soft-tinted valleys, deep blue sky and snow-white clouds. Sunsets which renew the colors of the day as though forsooth to shade them. Wood smoke. The beginnings of the hunt. Harvest and winter preparation.

Winter comes in December, but seldom sets in seriously before the middle of the month. When it comes the snow stays white against the evergreens and clothes the fields in splendor. If there is anything more invigorating and enticing to the lover of the out-of-doors than a typical winter day in Maine, it is yet to be discovered. People feel well. Work is hastened. Factories speed their product. Duties are discharged with pleasure and men learn the Yankee spirit.

Maine in winter offers opportunities for coasting, ice-boating, sleighing, skating, skiing, snow-shoeing, tobogganing—even, for the adventurous, a suggestion of mountain climbing.



Rangleley water sports are featured by swimming meets.

## Maine is a Sunshine State

The United States Weather Bureau, Portland, records the past 20 years show an average of Maine sunshine for June, July, August and September of 10 days each month that were cloudy with from 8/10 of the sky covered by clouds to totally overcast. These four months show 65 per cent of sunshine; and an average of 8 days a month with .04 inch or more of rain.

Dense fogs (objects obscured at 1000 feet) between 8 A. M. and sunset for a 20 year average for Maine in addition to rainy periods, were 2.0 hours for June, 2.8 hours for July and 4.4 hours for August. Light fog has a frequency about three times as great as dense fogs.

These figures deal with the coast regions. Fogs seldom extend inland more than 15 miles.

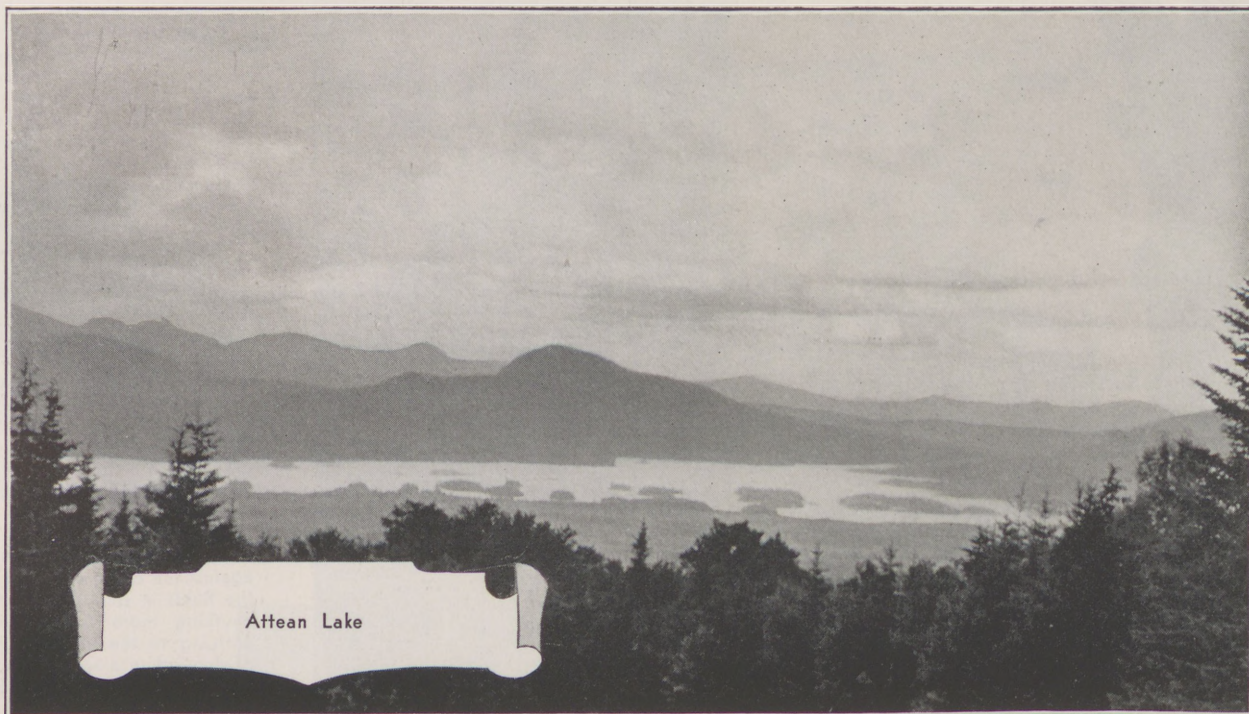
These fogs are an important factor in sustaining the rare freshness and the brilliant green that gives such unusual brilliancy to every landscape along the shores of Maine.

The United States Weather Bureau report further says:

"From oppressive summer heat conditions, complete relief may be found in the prevailing seventies almost everywhere in Maine."

Maine is in the same 45° parallel of latitude as Venice, Monte Carlo and Biarritz.





Attean Lake

### A Carefree Summer Life

The sojourner who makes the Maine woods public camp his summer home is as absolutely free as the balsam-laden forest breath that fills his city-clogged lungs. He cometh and goeth forth with perfect freedom and unconcern, wears what clothes he prefers—his oldest hats, and in general does what he likes, and when, and how; rests and reads in his cabin, goes to the main dining hall at meal time, fishes when the humor seizes him, boats a little, goes on delightful one-day excursions with his family or friends, or if he so elects, just loafs and takes life easy with all his might, and does this with plenty of capable assistants ever at hand.

### Relief from Hay Fever

Maine is rapidly becoming known as a mecca for those suffering from hay fever.

Broadly speaking, places in the forested regions offer great relief and in many cases entire immunity is had, particularly in the Rangeley region and in the country around Moosehead Lake. Probably anywhere up in the "Big Woods" region of Maine where grasses and pollen bearing weeds are not found can confidently be recommended.

Along the coast where the growth is principally coniferous, Monhegan Island, Newagen, Mount Desert Island, Petit Manan and Eastport are recommended.





Washington County has hundreds of miles of unbroken wilderness with ideal fishing, camping, canoeing and hunting conditions



Log Cabin Life in the Maine Woods

### Agriculture

The Bureau of the Census, U. S. Department of Commerce, places the value of Maine crops at \$52,541,205 and the value of her crop and live stock products at \$54,376,256. Potatoes comprise approximately four-fifths of the total value of her farm products, while hay and forage, small grains and dairy products follow in the order of their relative values. Aroostook potatoes are noted for their exceptionally fine quality and productiveness.

### Baxter Park on Mount Katahdin

Mount Katahdin, one of the highest peaks east of the Rockies and now a state park, is a foremost vacation attraction in Maine. This vast reserve, nine square miles of scenic grandeur, was given to the state by ex-Governor Percival P. Baxter in 1931.

It rises to a height of 5,285 feet and dominates a vast expanse of territory whose lakes and streams are famous among fishermen and whose forest depths are among the best hunting grounds in the state.



## Public Camp Sites

Maine is proud of her road sides. To keep them fit the Forest Service has established at convenient points lunch grounds and camp sites for your accommodation. Wherever you see the black and yellow signs "CAMP SITE and LUNCH GROUND" you can be sure of a clean comfortable spot to camp or lunch. They are indicated on the official State Highway map.

## Aroostook County Offers Satisfactory Camp Accommodations

### Boys' and Girls' Camp Activities

Of extreme interest and valuable in developing sound bodies and healthy minds in recreational projects in Maine is the running of summer camps for young people.

The movement started some 35 years ago, and in the intervening years this movement has grown tremendously, and is recognized as a highly important and rather unique part of Maine's recreational life. Boys and girls now have colonies of their own, where, under careful and sympathetic adult supervision, they are developed physically, mentally, and morally. Some such camps are conducted by church organizations, Jewish organizations, the Y. M. C. A., Y. W. C. A., et cetera; but the majority are private enterprises.



A State Public Camp Site

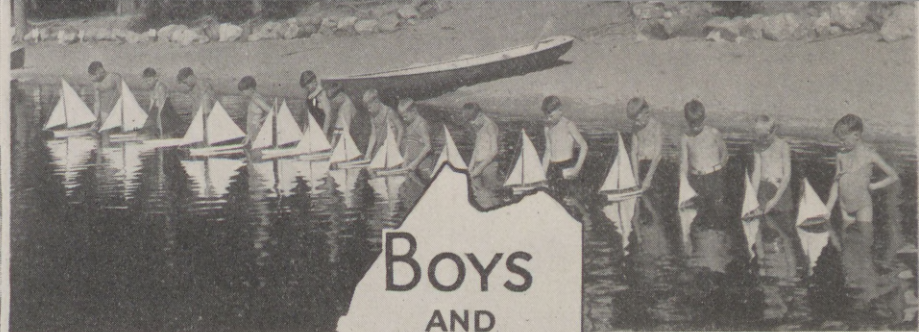
### At Your Service

Write for full detailed information about what to see, where to go and what it will cost.

Maine  
Development  
Commission,  
Augusta,  
Maine



A typical scene in Aroostook county during potato digging time.



# Boys AND GIRLS CAMPS

BUILD SELF-CONTROLLED  
MEN AND WOMEN LEADERS  
IN NATIONAL AFFAIRS





FIREPROOF SEA SHORE HOTEL



PALATIAL LAKE HOTEL

ACCOMMODATIONS  
*to fit*  
EVERY PURSE



FARM BOARD



SPORTING CAMP



OVERNIGHT CAMP



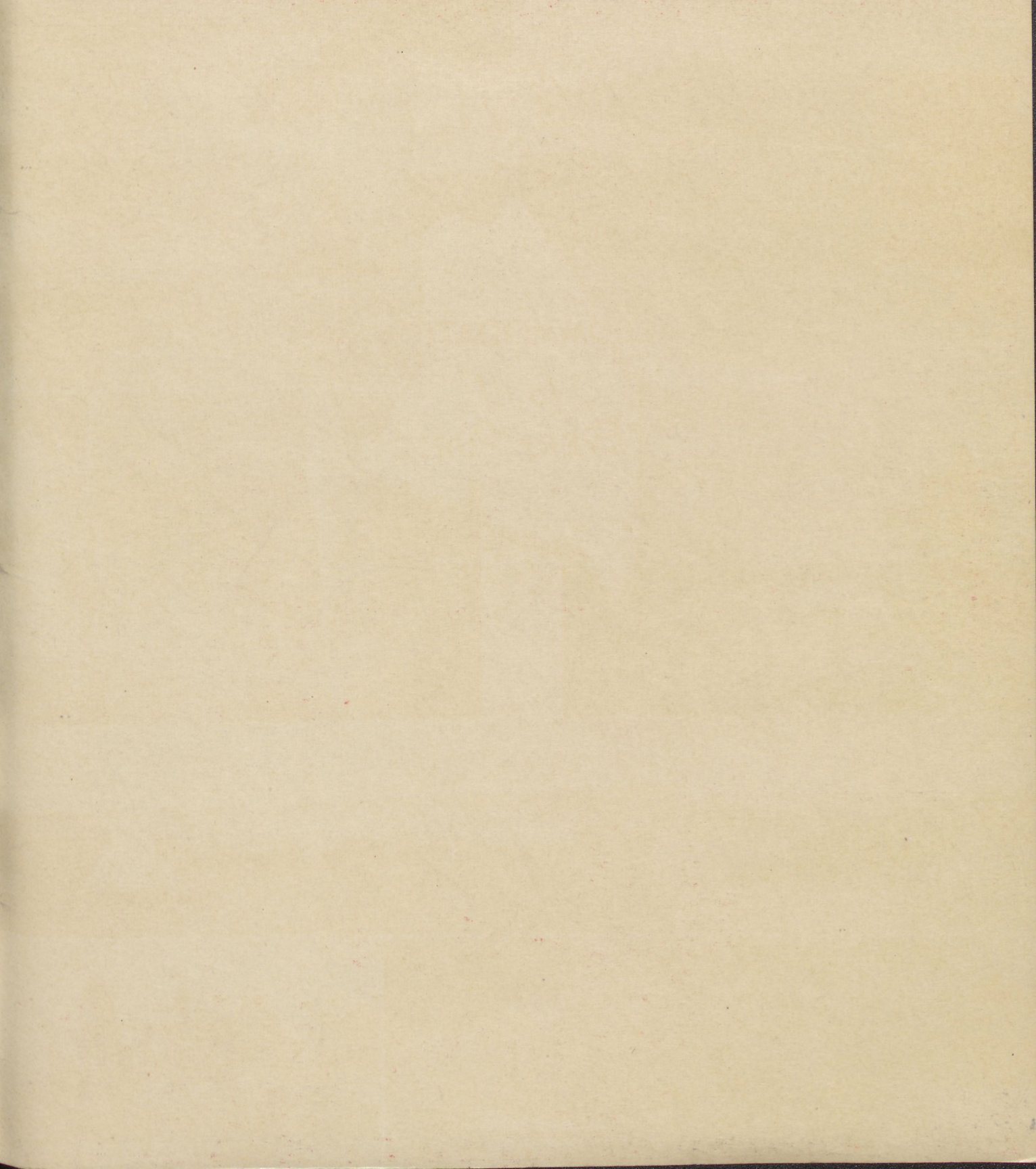
MOTOR CAMP



TENTING



RENTED COTTAGE



# MAINE

*The Land Of Remembered Vacations*

