

4-10-2013

Center for Governance and Sustainability: Policy Impact through Rigorous Analysis

Center for Governance and Sustainability, University of Massachusetts Boston


Maria Ivanova

University of Massachusetts Boston, maria.ivanova@umb.edu

Craig Murphy

Michael Denney

Follow this and additional works at: http://scholarworks.umb.edu/ocp_posters

 Part of the [Community Engagement Commons](#), [Environmental Policy Commons](#), [International Relations Commons](#), [Public Policy Commons](#), and the [Sustainability Commons](#)

Recommended Citation

Center for Governance and Sustainability, University of Massachusetts Boston; Ivanova, Maria; Murphy, Craig; and Denney, Michael, "Center for Governance and Sustainability: Policy Impact through Rigorous Analysis" (2013). *Office of Community Partnerships Posters*. Paper 97.

http://scholarworks.umb.edu/ocp_posters/97

This Presentation is brought to you for free and open access by the Office of Community Partnerships at ScholarWorks at UMass Boston. It has been accepted for inclusion in Office of Community Partnerships Posters by an authorized administrator of ScholarWorks at UMass Boston. For more information, please contact library.uasc@umb.edu.



Center for Governance and Sustainability Policy Impact through Rigorous Analysis

John W. McCormack Graduate School of Policy and Global Studies

Our Approach

Three main functions define the center:

- Serves as an **information hub**
- Provides **rigorous analysis**
- Acts as an **honest broker**

We collect and manage data on governance and sustainability across scales, apply diverse analytical models grounded in empirics, and create dialogues among scholars, practitioners, and the public.

Our Core Work

Intellectual rigor and policy relevance lie at the core of our research, teaching, and service. We connect concepts and people across disciplines, geographies and levels of governance. We move easily between local realities in Ethiopia or Boston and global vision at the United Nations.

Our Team

Interdisciplinary and international, our core team consists of two center co-directors, 6 senior fellows, 6 faculty fellows, 6 fellows and 12 research associates. We come from 24 countries and half a dozen different disciplines.

MOU with Addis Ababa University



Professor Ivanova and Provost Langley with the President and Faculty of AAU

The center has partnered with the Horn of Africa Regional Environment Center and Network at Addis Ababa University on a number of governance and sustainability projects in the Horn of Africa. In November 2012, UMass Boston and Addis Ababa University signed a Memorandum of Understanding.

The Center at the United Nations

Bringing analytical rigor into policy processes at the global level, the center has actively engaged with the UN and participated in the 2012 Rio+20 conference in Brazil and in the 2013 UN Environment Assembly in Nairobi, Kenya. We produce a documentary film series on global environmental governance featuring interviews with ministers, international organization officials and public intellectuals from around the world.

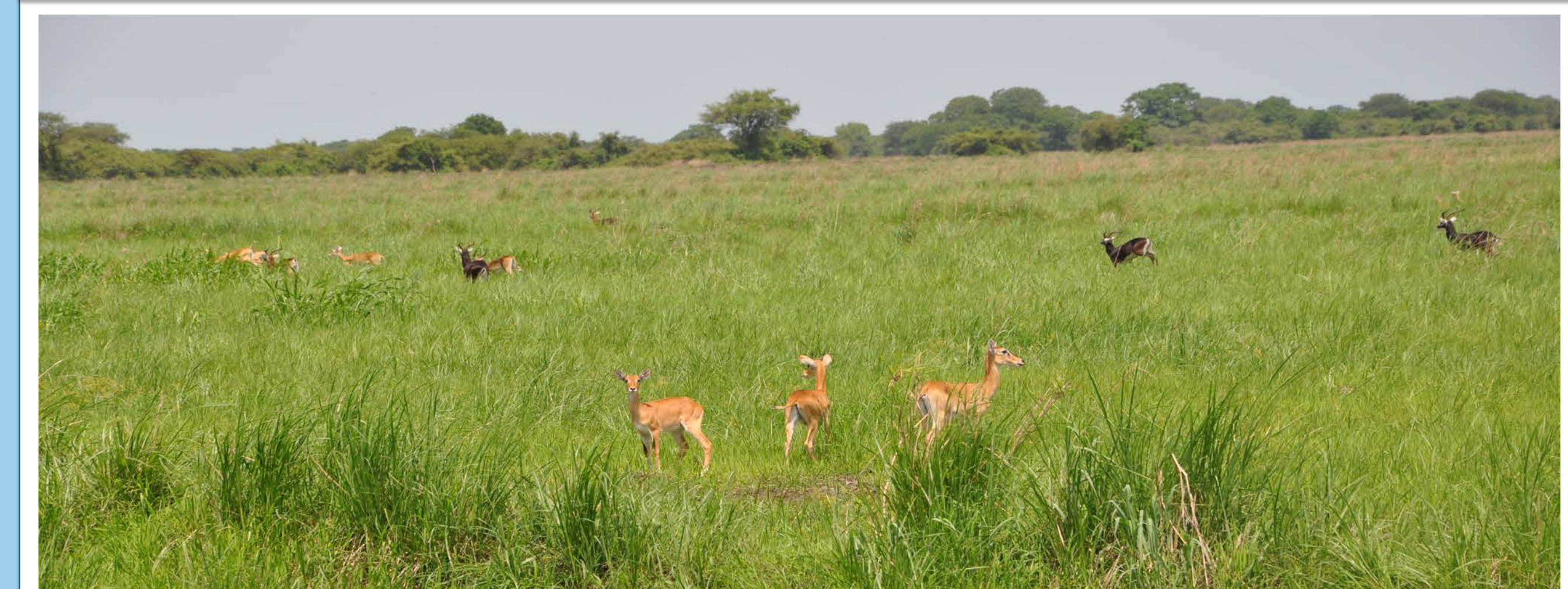


Center for Governance and Sustainability delegation with UNEP Executive Director Achim Steiner



Research associate Natalia Escobar-Pemberthy interviews Juan Gabriel Uribe, Minister of Environment for her home country of Colombia

Land Use in Gambella, Ethiopia



White eared kob in Gambella National Park

Gambella National Park, located in southwest Ethiopia, is home to Africa's second largest overland animal migration, but is threatened by agricultural investors who transform the landscape that supports wildlife. The center works closely with the Horn of Africa Regional Environment Center and Network on developing a comprehensive land-use plan for Gambella. The plan will serve to protect the park and its wildlife while allowing for significant international investment in the region.

Contact Us

Directors: Maria Ivanova and Craig Murphy

Contact: Michael Denney

michael@environmentalgovernance.org

www.environmentalgovernance.org

www.umb.edu/cgs