

## Georgia Southern University Digital Commons@Georgia Southern

---

My News

Office of Strategic Communications & Marketing

---

# MyNews

January 22, 2019

Georgia Southern University

Follow this and additional works at: <https://digitalcommons.georgiasouthern.edu/mynews>



Part of the [Higher Education Commons](#)

---

### Recommended Citation

Georgia Southern University, "MyNews" (2019). *My News*. 202.  
<https://digitalcommons.georgiasouthern.edu/mynews/202>

This newsletter is brought to you for free and open access by the Office of Strategic Communications & Marketing at Digital Commons@Georgia Southern. It has been accepted for inclusion in My News by an authorized administrator of Digital Commons@Georgia Southern. For more information, please contact [digitalcommons@georgiasouthern.edu](mailto:digitalcommons@georgiasouthern.edu).



## Upcoming Events

Check out these Georgia Southern events  
Statesboro | Savannah | Hinesville



### Open Forum for Faculty and Staff 9 a.m. 1/23

Representatives from Sasaki, the consulting firm working with Georgia Southern on the on the University Master Plan, will hold an open forum for faculty and staff.

**Student Union (Armstrong Campus)**



### Spring 2019 'Boro Browse 11 a.m. 1/23

The 'Boro Browse gives campus departments, Statesboro area businesses and nonprofit agencies an opportunity to visit campus and share information.

**Russell Union (Statesboro Campus)**



### Spring 2019 | Savannah Browse 11 a.m. 1/24

The Savannah Browse gives campus departments, Savannah area businesses and nonprofit agencies an opportunity to visit campus and share information.

**Student Union (Armstrong Campus)**



### Dr. Lee McCorkle presents The Cognitive Science of Religion: When Science and Humanities Collide 3:30 p.m. 1/24

Dr. Lee McCorkle will present the Cognitive Science of Religion: When Science and Humanities collide.

**Carroll Building (Statesboro Campus)**



### Fresh Fruit Friday 10 a.m. 1/25

Stop by Health and Recreation's booth to sample fresh, in-season fruit and learn about their health benefits.

**Russell Union (Statesboro Campus)**



### International Conversation Hour 11:30 a.m. 1/25

The Office of International Programs & Services sponsors International Conversation Hour each Friday from 11:30 a.m. – 1:00 p.m.

**Russell Union (Statesboro Campus)**



### Faculty Lecture Series, "Sustainable Aquaponics Research Center: Striving to Improve the Sustainability of Aquaponics" 12:15 p.m. 1/25

Join Heather Joesting, Ph.D., who will present "Sustainable Aquaponics Research Center: Striving to Improve the Sustainability of Aquaponics" on Friday, Jan. 25.

### **Student Union (Armstrong Campus)**



### **Southern Conference on Children 1/26**

The Southern Conference on Children continues to serve childcare providers, directors, teachers and families training.

### **Nessmith-Lane Conference Center (Statesboro Campus)**



### **Inclusive Excellence Listening Session - Black Student Experience (#1) Noon 1/28**

Share ideas about how to make Georgia Southern an even more inclusive environment. Open to all students, faculty and staff.

### **Russell Union (Statesboro Campus)**



### **Inclusive Excellence Listening Session - International Student Experience (#1) Noon 1/28**

Share ideas about how to make Georgia Southern an even more inclusive environment. Open to all students, faculty and staff.

### **Russell Union (Statesboro Campus)**



### **Inclusive Excellence Listening Session - Faculty of Color (#1)**

**1 p.m 1/28**

Share ideas about how to make Georgia Southern an even more inclusive environment. Open to all students, faculty and staff.

### **Russell Union (Statesboro Campus)**



### **Inclusive Excellence Listening Session - Women Faculty (#1)**

**3 p.m. 1/28**

Share ideas about how to make Georgia Southern an even more inclusive environment. Open to all students, faculty and staff.

### **Russell Union (Statesboro Campus)**



### **Inclusive Excellence Listening Session - General Student Experience (#1) 4 p.m. 1/28**

Share ideas about how to make Georgia Southern an even more inclusive environment. Open to all students, faculty and staff.

### **Russell Union (Statesboro Campus)**



### **Inclusive Excellence Listening Session - Hispanic/Latino... 4 p.m. 1/28**

Share ideas about how to make Georgia Southern an even more inclusive environment. Open to all students, faculty and staff.

### **Russell Union (Statesboro Campus)**



### **Inclusive Excellence Listening Session - Women Faculty (#2) 10 a.m. 1/29**

Share ideas about how to make Georgia Southern an even more inclusive environment.  
Open to all students, faculty and staff.

**Russell Union (Statesboro Campus)**



### **Inclusive Excellence Listening Session - General Faculty (#2)**

**11 a.m. 1/29**

Share ideas about how to make Georgia Southern an even more inclusive environment.  
Open to all students, faculty and staff.

**Russell Union (Statesboro Campus)**



### **SpeedFITting 11 a.m. 1/29**

Get ready for Spring Break with speedy advice for a healthier you at SpeedFITting! Join Health and Recreation for free, quick consultations from nutritionists and personal trainers on how to maintain a healthy weight.

**Student Union (Armstrong Campus)**



### **Inclusive Excellence Listening Session - Faculty of Color (#2) 11 a.m. 1/29**

Share ideas about how to make Georgia Southern an even more inclusive environment.  
Open to all students, faculty and staff.

**Russell Union (Statesboro Campus)**



### **Inclusive Excellence Listening Session - Black Student Experience (#2) 12 p.m. 1/29**

Share ideas about how to make Georgia Southern an even more inclusive environment.  
Open to all students, faculty and staff.

**Russell Union (Statesboro Campus)**



### **Inclusive Excellence Listening Session - LGBTQIA Student Experience (#2) 12 p.m. 1/29**

Share ideas about how to make Georgia Southern an even more inclusive environment.  
Open to all students, faculty and staff.

**Russell Union (Statesboro Campus)**



### **Inclusive Excellence Listening Session - Differently Abled (physically or mentally) 1 p.m. 1/29**

Share ideas about how to make Georgia Southern an even more inclusive environment.  
Open to all students, faculty and staff.

**Russell Union (Statesboro Campus)**



### **Inclusive Excellence Listening Session - LGBTQIA Faculty and Staff Experience 1 p.m. 1/29**

Share ideas about how to make Georgia Southern an even more inclusive environment.  
Open to all students, faculty and staff.

**Russell Union (Statesboro Campus)**



### **Inclusive Excellence Listening Session - Staff of Color 2 p.m. 1/29**

Share ideas about how to make Georgia Southern an even more inclusive environment.  
Open to all students, faculty and staff.

**Russell Union (Statesboro Campus)**



### **Inclusive Excellence Listening Session - General Staff (#1)**

**3 p.m. 1/29**

Share ideas about how to make Georgia Southern an even more inclusive environment.  
Open to all students, faculty and staff.

**Russell Union (Statesboro Campus)**



### **Inclusive Excellence Listening Session - Multicultural Student Experience (#1) 4 p.m. 1/29**

Share ideas about how to make Georgia Southern an even more inclusive environment.  
Open to all students, faculty and staff.

**Russell Union (Statesboro Campus)**



### **Inclusive Excellence Listening Session - International Student Experience (#2) 4 p.m. 1/29**

Share ideas about how to make Georgia Southern an even more inclusive environment.  
Open to all students, faculty and staff.

**Russell Union (Statesboro Campus)**



### **Inclusive Excellence Listening Session - Women Faculty (#3)**

**8 a.m. 1/30**

Share ideas about how to make Georgia Southern an even more inclusive environment.  
Open to all students, faculty and staff.

**Armstrong Center (Armstrong Campus)**



### **Inclusive Excellence Listening Session - Differently Abled (physically or mentally) Campus Experience (#2) 9 a.m. 1/30**

Share ideas about how to make Georgia Southern an even more inclusive environment.  
Open to all students, faculty and staff.

**Armstrong Center (Armstrong Campus)**



### **Inclusive Excellence Listening Session - General Staff (#2)**

**9 a.m. 1/30**

Share ideas about how to make Georgia Southern an even more inclusive environment.  
Open to all students, faculty and staff.

**Armstrong Center (Armstrong Campus)**



### **Inclusive Excellence Listening Session - Multicultural Student Experience (#2) 10 a.m. 1/30**

Share ideas about how to make Georgia Southern an even more inclusive environment.  
Open to all students, faculty and staff.

**Armstrong Center (Armstrong Campus)**



### **Inclusive Excellence Listening Session - LGBTQIA Student Experience (#2) 10 a.m. 1/30**

Share ideas about how to make Georgia Southern an even more inclusive environment. Open to all students, faculty and staff.

**Armstrong Center (Armstrong Campus)**



**Stop the Bleed Class 11 a.m. 1/30**

Learn how to save a life! This class will teach you several techniques on how to stop a bleeding emergency.

**Armstrong Student Success Center (Armstrong Campus)**



**2019 MLK Celebration Noon 1/30**

Noted journalist Roland S. Martin will serve as the 2019 annual MLK Celebration Speaker on Wednesday, Jan. 30, at noon.

**Student Union (Armstrong Campus)**



**Inclusive Excellence Listening Session - General Student Experience (#2) 1:45 p.m. 1/30**

Share ideas about how to make Georgia Southern an even more inclusive environment. Open to all students, faculty and staff.

**Armstrong Center (Armstrong Campus)**



**Inclusive Excellence Listening Session - Hispanic/Latino Campus Experience (#3) 1:45 p.m. 1/30**

Share ideas about how to make Georgia Southern an even more inclusive environment. Open to all students, faculty and staff.

**Armstrong Center (Armstrong Campus)**



**Inclusive Excellence Listening Session - Black Student Experience (#3) 3 p.m. 1/30**

Share ideas about how to make Georgia Southern an even more inclusive environment. Open to all students, faculty and staff.

**Armstrong Center (Armstrong Campus)**



**Inclusive Excellence Listening Session - International Student Experience (#2) 3 p.m. 1/30**

Share ideas about how to make Georgia Southern an even more inclusive environment. Open to all students, faculty and staff.

**Armstrong Center (Armstrong Campus)**



**2019 MLK Celebration 7 p.m. 1/30**

Noted journalist Roland S. Martin will serve as the 2019 annual MLK Celebration Speaker on Wednesday, Jan. 30, at noon.

**Performing Arts Center (PAC)**



**International Conversation Hour 11:30 a.m. 2/1**

The Office of International Programs & Services sponsors International Conversation Hour each Friday from 11:30 a.m. – 1:00 p.m.

**Russell Union (Statesboro Campus)**



**Georgia Southern University Department of Music  
presents pre-concert lecture with Jimmy Finnie**

**6 p.m. 2/1**

Pre-concert lecture with guest artist Jimmy Finnie.

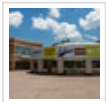
**Foy Building (Statesboro Campus)**



**71st Annual Miss Georgia Southern University Scholarship  
Pageant 6 p.m. 2/2**

Join the University Programming Board for the 71st annual Miss Georgia Southern Scholarship Pageant on February 2nd, 2019 in the Performing Arts Center.

**Performing Arts Center (PAC)**



**Shine, Black Girl, Shine - Black Woman Empowerment  
Awards**

**7 p.m. 2/2**

This event will highlight the positive contributions of black women at Georgia Southern.

**Russell Union (Statesboro Campus)**

[Back to top](#)

---

To view all University events or to add events to the University Calendar, visit [GeorgiaSouthern.edu/Calendar](http://GeorgiaSouthern.edu/Calendar) or email your Communication Officer. For a full list of Communication Officers, visit [GeorgiaSouthern.edu/marketing/communication-officers/](http://GeorgiaSouthern.edu/marketing/communication-officers/).

