

Georgia Southern University

Digital Commons@Georgia Southern

Henderson Library Newsletters

Newsletters

5-24-2010

Friends of Henderson Library Newsletter

W. Bede Mitchell

Georgia Southern University, wbmitch3@gmail.com

Mary Margaret Jones

Georgia Southern University

Marvin Goss

Georgia Southern University

Julie Harwell

Georgia Southern University

Follow this and additional works at: <https://digitalcommons.georgiasouthern.edu/lib-news>

 Part of the [Library and Information Science Commons](#)

Recommended Citation

Mitchell, W. Bede; Jones, Mary Margaret; Goss, Marvin; and Harwell, Julie, "Friends of Henderson Library Newsletter" (2010). *Henderson Library Newsletters*. 4.

<https://digitalcommons.georgiasouthern.edu/lib-news/4>

This newsletter is brought to you for free and open access by the Newsletters at Digital Commons@Georgia Southern. It has been accepted for inclusion in Henderson Library Newsletters by an authorized administrator of Digital Commons@Georgia Southern. For more information, please contact digitalcommons@georgiasouthern.edu.

Friends of Henderson Library Newsletter

Don't miss the next Friends' event ! Our first Farm to Table dinner featuring local farmers is tentatively scheduled for July 22nd. On September 11th join us for our annual Dean's Tailgate. Enjoy some great food and help support the library as we cheer Georgia Southern to a victory against Navy!

See a list of all upcoming events @

<http://library.georgiasouthern.edu/friends/new.html>



Richard Leo Johnson

The Budget Crisis and Henderson Library by Dr. Bede Mitchell, Dean of the Library

Much has been made of budget concerns. The Center on Budget and Policy Priorities reports that 48 states faced shortfalls within their 2010 fiscal year. Henderson Library has not been unaffected.

For FY09, the collection budget was cut by approximately \$300,000, and the library

purchased only 162 books. In FY10, the cut was more than \$470,000, and more than 930 subscriptions (magazines/journals) were cancelled. Projections for FY11 indicate the state-supported electronic library GALILEO

will receive no additional dollars to pay cost increases. Each University System library also pays for additional electronic resources beyond GALILEO, according to institutional needs. Henderson Library provides almost 6 dozen databases which will cost \$300,000 in FY11.

Even before the budget cuts, Henderson was doing more with less compared to its peers. Based on 2008 data compiled by the National Center for Education Statistics, the Georgia Southern's

official peer institutions spent an average of \$475.99 per FTE (full-time equivalent)* student on their libraries, whereas Henderson Library is budgeted for only \$224.84 per FTE student. With 15,373 FTE students in FY 2008, being funded at the peer average would have meant an additional \$3,860,928.90 in the book and subscriptions budget.

The funds raised by the Friends of Henderson Library are essential for supplementing our state-funded budget.

—continued on page 6

Inside this issue:

Statesboro Magazine	3
Henderson Heroes	3
Frank Fortune Prints	3
Recent Events	4
GA Literary Festival	5
New FOHL Benefits	5

Collection Spotlight: Oral History Collection by Mary Margaret Jones

Centered on the fourth floor of the Zach S. Henderson Library, an office complex houses the research and development operations of the Special Collections Department. Marvin Goss, Head, and his assistant Maggie

Horne Thomas, receive, catalog, inspect and handle historical documents and manuscripts related to Bulloch County and the surrounding region.

For the past year, both

have been involved in refreshing the Oral History Collection that began in the late 1970s and lasted through the early 1990s. Oral histories of prominent regional citizens, born in the early

—continued on page 2

Oral History Collection —continued from page 1

the early twentieth century, were either recorded on cassette tapes or by typewriter.

At the start, interviews were made by history professors, Dr. Frank Saunders, Dr. Walter J. (Jay) Fraser and Dr. George A. Rogers with the majority being conducted by Mrs. Esther Mallard. Then President Dale Lick encouraged and supported this project.

Thomas has spent most of her workdays transcribing the oral histories and creating a computer-based repository of the tapes, which she says are often difficult to understand due to the age and poor quality of the recordings. Also, the histories that were created by typewriter are being retyped as computer documents.

The interviews tell stories that include the Great Depression, World Wars I and II, the Civil Rights Movement and more.

Respondents were asked to tell about their lives from early childhood to the date of the interview.

Among those included in the collection are Zach S. Henderson, Emma Kelly, Dr. Bird Daniel, Dr. Julian Quattlebaum, State Supreme Court Judge Eugene Gadsden, Virginia Russell, Honey Bowen, Phil Landrum, Ernest and Huldah Mingledorff, Bertha and Ida Mae Hagin as well as members of the “Savannah Greeks.”

Thomas relays, “From these interesting histories I have learned about things I never knew, **such as the ‘wade-ins’ at Tybee Beach, which were going on at the time of the ‘sit-ins’ of the Civil Rights Movement.**

African Americans were not allowed to go to public beaches in this region except for a few reserved areas referred to as ‘black beaches,’ so groups decided to stand, or wade, in the surf at Tybee and were arrested for doing so until eventually beaches were desegregated.”

Goss becomes animated as he discusses the importance of these documents. “We are deeply indebted to the foresight of our leaders in the 1970s who made this collection possible.”

By the end of the summer 2010, the transcripts should be completed and the public will have access to these valuable time capsules. **A partial listing of interviews, updated in 2005, can be accessed at <http://library.georgiasouthern.edu/specialcollections/oralhistory/index.html>.**

Special Collections is generally open Monday – Friday from 1:00 until 5:00 pm, but due to limited staffing, you are encouraged to schedule an appointment by contacting Marvin Goss via 912-478-1897 or mgoss@georgiasouthern.edu.

You can support the preservation of and facilitate access to the valuable historical materials housed in Special Collections by designating a financial donation via <https://touchpay.georgiasouthern.edu/foundation/>. In order to receive your support, you must specify Henderson Library Special Collections within the Comments/ Designation box located at the end of the secure, online form.

You can also help enhance the collections by donating books, artwork and other objects. To discuss a donation or estate bequest, contact Dr. Bede Mitchell, Dean of the Library, via 912-478-5115 or wbmitch@georgiasouthern.edu.



facebook

Join the Henderson Library on facebook via www.facebook.com/group.php?gid=6751951916

Statesboro Magazine Enhanced by Index

by Marvin Goss

Since its debut in Summer 2000, *Statesboro Magazine* has become a prominent regional publication, featuring well-illustrated



articles about Bulloch County past and present. It was a quarterly until 2003, when it adopted a bi-monthly schedule which proved its popularity.

Special Collections recently completed an index of the first eight years of *Statesboro Magazine*, which makes it possible to quickly look up names (of individuals, companies, schools, and places) and events, both contemporary and historical. The index for the 2000-2004 issues is 143

Page 3

pages; for 2005-2007, 147 pages. If you are interested in an electronic or hard copy, contact Marvin Goss via 912-478-1897 or mgoss@georgiasouthern.edu.



Henderson Heroes: Spotlight on Employees

Jadarelle Stanford, a student assistant within Government Documents, received the Dalmyra Price Leadership Award which recognizes those who “serve as a voice for diversity in activities and are committed, loyal, diligent, unselfish, dedicated, and true leaders at Georgia Southern.” (from <http://students.georgiasouthern.edu/multicultural/essencepacket.doc>)

LiLi Li (2002)*, Associate Professor & E-Information Services Librarian, and **Lori Lester (2007)***, Assistant Professor & Government Documents Librarian, published the article “Rethinking Information Literacy Instructions in the Digital Age” within volume 16, issue 11 of the *International Journal of Learning*.

Jonathan Harwell (2007)*, Assistant Professor & Collection Development & Assessment Librarian, presented *OARS: Toward Automating the Ongoing Subscription Review* at the 2010 Acquisitions Institute at Timberline Lodge.



* indicates the year the individual joined Georgia Southern

Limited Edition Frank Fortune Print

Only four copies remain of the brilliant, limited edition prints of the Frank Fortune photograph of the newly renovated Zach S. Henderson Library of Georgia Southern University. Fortune served as the official photographer of Georgia Southern University for thirty years until his

retirement in 2009. He has won numerous awards, including the 2007 CASE Photographer of the Year. This spectacular 16” x 20”, high-resolution print can be purchased for \$135. For additional details, please contact us at 912-478-5115 or library@georgiasouthern.edu.



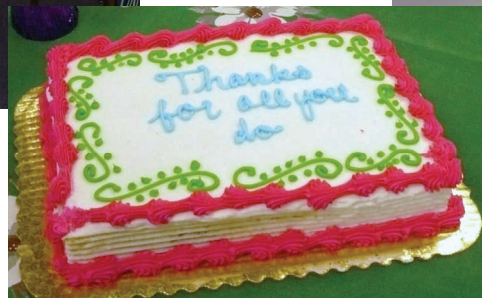
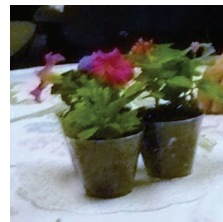
National Library Week Events

The Friends treated the Henderson Library team with refreshments and door prizes at a reception on April 27th, and two events for the public were held the week of April 11th: a free screening of *The Hollywood Librarian* and a special presentation by Roger Allen on the history of libraries in Bulloch County.

The FOHL greatly appreciates the generosity of and research by Roger Allen; the Statesboro-Bulloch County Friends of the Library for co-sponsoring the public events; and Bill Price with Georgia Eagle Broadcasting, the Bulloch County Historical Society, and the *George-Anne Daily* for publicizing the events.



Check out all the captioned photos via <http://tinyurl.com/FOHLphotos>.



FOHL Advisory Board

The Friends of Henderson Library Advisory Board is composed of members appointed by the President of Georgia Southern University for three-year, renewable terms.

To volunteer with event planning or to be considered for the Advisory Board, please complete the form at <http://library.georgiasouthern.edu/friends/board.html#volunteer>.

We welcome your suggestions! Please contact us via library@georgiasouthern.edu.

2010-2011 Advisory Board

Anna Beecher (2011)
John Bressler (2012)
Julie Harwell (2011)
Mary Margaret Jones (2012)
Rosemarie Stallworth-Clark (2012)
Pat Saseen (2012)
Molly Sisson (2010)
Laura Wheaton (2010), Chair

Ex Officio

Marvin Goss
Associate Dean Ann Hamilton
Pam Jones
Dean Bede Mitchell



Georgia Literary Festival in Statesboro: October 22-23, 2010

The Georgia Literary Festival comes to Statesboro in late October, and will be held at Georgia Southern's Nessmith-Lane Continuing Education Building. The festival opens with a Friday Night Kickoff* within downtown Statesboro and will feature a special reception, lecture and play at the Averitt Center for the Arts and a Statesboro Ghost Tour by Lantern Light.

An annual event which moves to a different city every year, the Georgia Literary Festival is spon-

sored by the Georgia Center for the Book, the state affiliate of the Center for the Book at the Library of Congress in Washington, DC and the Georgia Humanities Council. The co-chairs of the 2010 festival are Bede Mitchell, Dean of Libraries at Georgia Southern University, and Sharon Rowe, director of the Statesboro Regional Library.

The festival includes lectures, workshops, **panel discussions, book signings and activities for readers of all ages** in addition to vendors offering book-related

items and food. **There is no charge for these activities.**

More than 20 noted authors have already agreed to take part in the festival including a Pulitzer Prize winner and honorees in both adult and children's writing.

Learn more about the authors, schedule and vendor opportunities at <http://ceps.georgiasouthern.edu/conted/GLF2010.html>.



*includes some ticketed events

New Benefits for Friends of Henderson Library Members

Recently, the Friends of Henderson Library Advisory Board voted to recognize any gift to Henderson Library as eligible for membership with the Friends and updated many of the membership benefits. There are five membership levels, ranging from Basic (starting at \$10) to Lifetime (\$750 or more). At the Scholar's Circle and above, you receive 10% off purchases at

The Book & Cranny, an independent bookstore in Statesboro. At the Dean's Circle and above, you receive a 10% discount on all Friends events. And at the Henderson Circle and above, you receive two complimentary tickets to the annual Fall Luncheon prepared students within Georgia Southern's Hospitality & Restaurant Management program.

All FOHL members are eligible to receive the Friends' newsletter and a Community Borrower Card which can be used to check-out materials from Henderson Library.

Read more about the new membership options, including a link to join online from <http://library.georgiasouthern.edu/friends/membership.html>.



Friends of Henderson Library

Zach S. Henderson Library

Georgia Southern University

PO Box 8074

Statesboro, GA 30460-8074

Phone: 912.478.35115

Fax: 912.478.0093

<http://library.georgiasouthern.edu/friends>

library@georgiasouthern.edu

The Budget Crisis and Henderson Library —continued from page 1

Additionally, the Student Government's Technology Fee has provided essential assistance. In FY10, technology fees paid by students funded almost 800 electronic journals via Elsevier's ScienceDirect and three databases: Value Line Investment Survey, ProQuest Public Health, and Wilson OmniFile Full Text Mega Edition. They also funded new state-of-the-art scanners: one which can scan to your flash drive from microfilm or microfiche, and a book scanner with a touch-screen interface that is designed for tightly bound objects and scanning in 3-D.

Despite limited resources, the Henderson Library provides a phenomenal level of service. In 2009, we were open 6,113.5 hours and we hosted 796,537 visitors, including community users. We look forward to increasing these numbers this year and to meeting your service needs.



*FTE = "For institutions of higher education, the enrollment of full-time students, plus the full-time equivalent of part-time students as reported by institutions equals the FTE" (from <http://nces.ed.gov/pubs/esn/n99u.asp>).

FOHL Blog

Check out the electronic version of this newsletter at

blogs.georgiasouthern.edu/fohl/



**SAVE
THE
DATE!**



- ◆ Thu, July 22, — Farm to Table Dinner*
- ◆ Sat, 9/11 @ 3 pm — Dean's Tailgate
- ◆ Fri, 9/17 @ noon — Fall Luncheon
- ◆ Fri — Sat, 10/22-23 — GA Literary Festival

*Date subject to change