

Mar 22nd, 2:45 PM - 3:30 PM

## Cotton: From Farm to Market - Bringing Ag into Elementary

Justin Liles

*Odom Elementary School*, [justin.liles@colquitt.k12.ga.us](mailto:justin.liles@colquitt.k12.ga.us)

Lauri Dalton

*Odom Elementary School*, [lauri.dalton@colquitt.k12.ga.us](mailto:lauri.dalton@colquitt.k12.ga.us)

Mary Wilson

*Odom Elementary School*, [mary.wilson@colquitt.k12.ga.us](mailto:mary.wilson@colquitt.k12.ga.us)

Patricia Lirio

*Odom Elementary School*, [patricia.lirio@colquitt.k12.ga.us](mailto:patricia.lirio@colquitt.k12.ga.us)

Follow this and additional works at: <https://digitalcommons.georgiasouthern.edu/stem>

---

### Recommended Citation

Liles, Justin; Dalton, Lauri; Wilson, Mary; and Lirio, Patricia, "Cotton: From Farm to Market - Bringing Ag into Elementary" (2019). *Interdisciplinary STEM Teaching & Learning Conference*. 21.  
<https://digitalcommons.georgiasouthern.edu/stem/2019/2019/21>

This event is brought to you for free and open access by the Conferences & Events at Digital Commons@Georgia Southern. It has been accepted for inclusion in Interdisciplinary STEM Teaching & Learning Conference by an authorized administrator of Digital Commons@Georgia Southern. For more information, please contact [digitalcommons@georgiasouthern.edu](mailto:digitalcommons@georgiasouthern.edu).

# STEAM

## Bringing Ag into Elementary

Lauri Dalton  
Justin Liles  
Patricia Lirio  
Mary Wilson



In ONE word....What does AG mean to you?

---

To join this session:

**TEXT LAURIDALTON635**

**to 37607**

**Once joined, text your response.**

Questions? Join our Parking Lot

---

**YURPF**

Type in this code at  
[nearpod.com](https://nearpod.com)

# STEM Vision

---

**J.M. Odom Elementary staff, parents, and students will provide a nurturing environment that establishes a student centered school. Students will become innovative thinkers and problem solvers through exploration to achieve on grade level and beyond.**

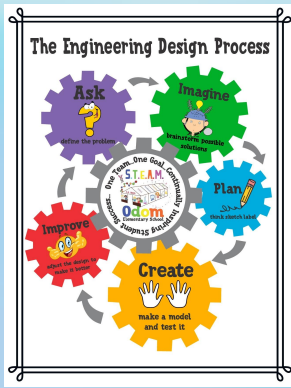
# J. M. Odom Elementary School Overview

---

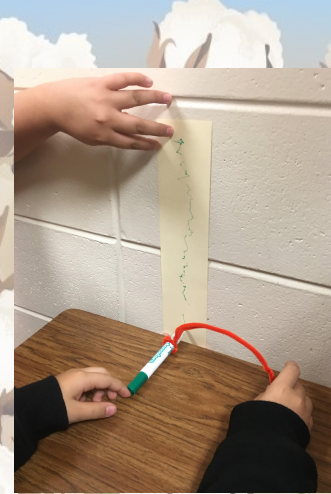
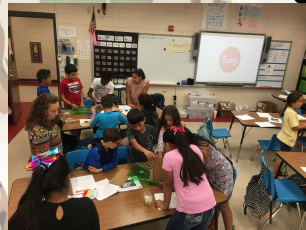
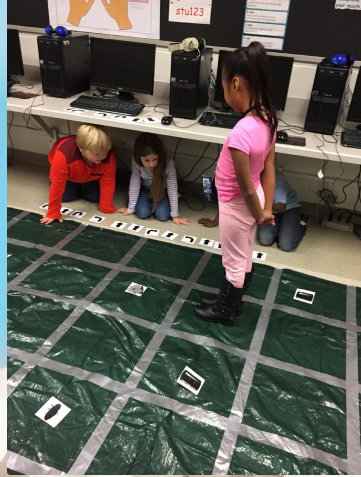
- **Student/Teacher Ratio:**  
**20:1**
- **Population: 628**
  - African American: 10.9%
  - Hispanic: 55.4%
  - White: 30.8%
  - Other: 2.9%



# STEAM in our School



- STEAM Garden
- AG Lab
- STEM Night
- PLTW Units in classrooms
- Day of Code
- STEM Day - Focuses on Ag
- Science Fair
- Robotics



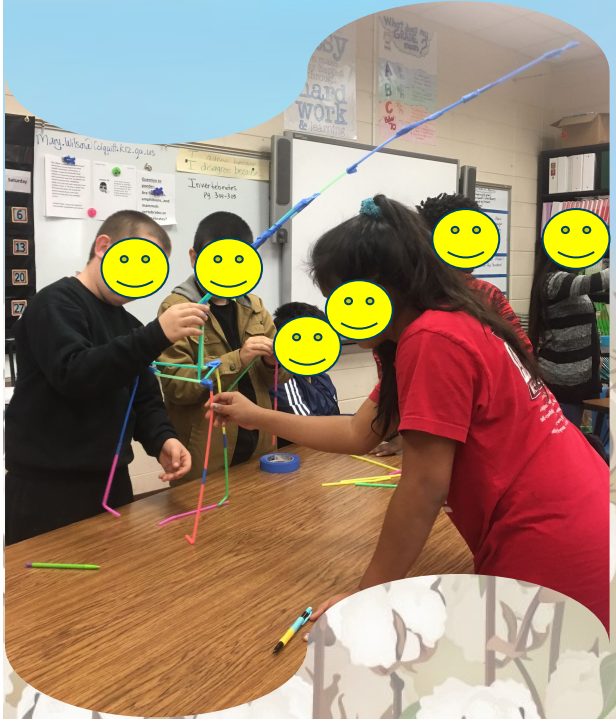
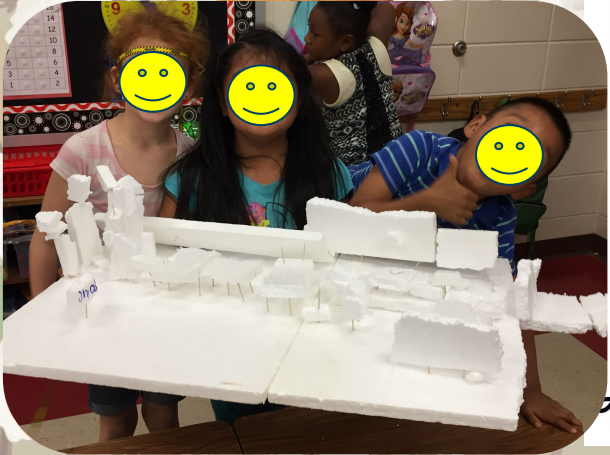
# STEM Partners - How we found them

- Colquitt County - Farm Bureau
- Krystal Gainous - Juice Plus Tower Garden
- SC Barker Construction
- Hart Farms
- Walden Farms
- ABAC
- Sunbelt Ag Expo
- Mary Mack Printing and Design

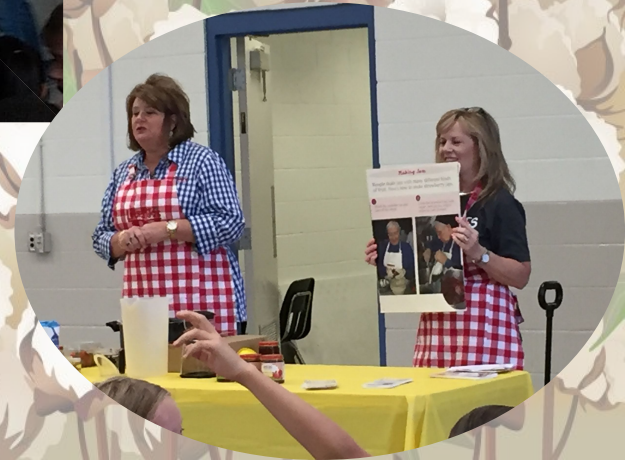
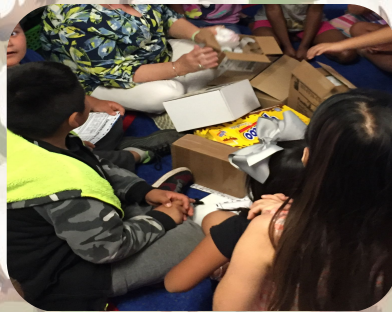
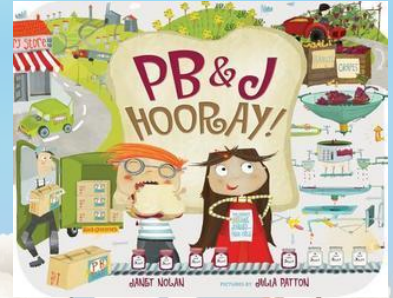




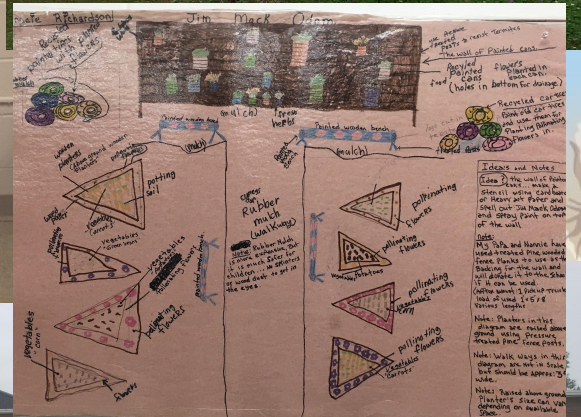
# STEM Challenges (Engineering Design)



# STEM Day - Ag Related (From Farm to Family)



# AG in Our School



# Students Tending to the Gardens!



Odom's STEAM Purpose - to plant, tend to, harvest and prepare produce for Colquitt County's Senior Citizen Center.

# Harvesting our crops for community outreach!



# Our **A**G Lab

Each Grade is Responsible For Activities that are Standards Based.....

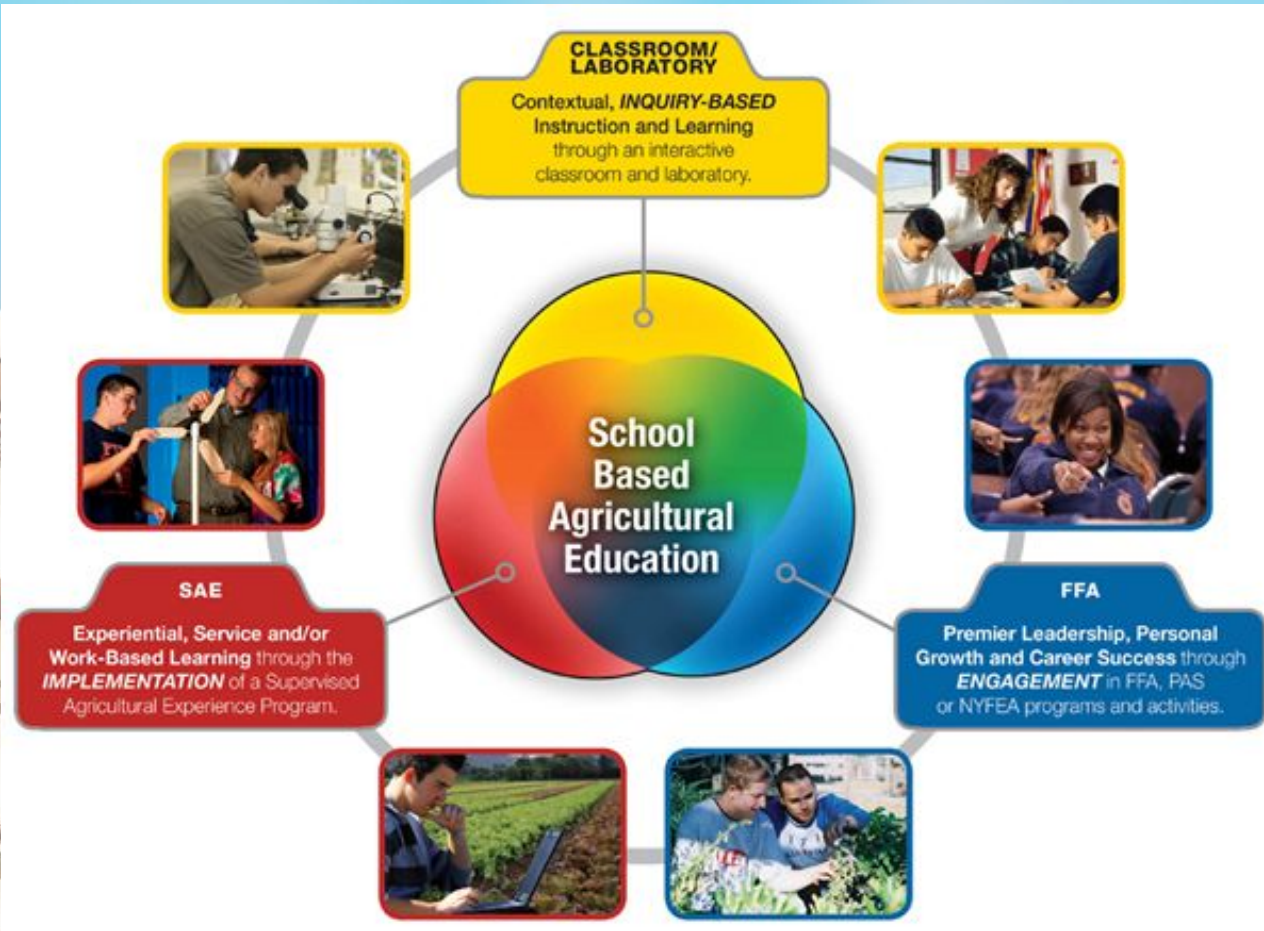
- **KINDERGARTEN:** Garden - Plant Life Cycle
- **1ST** Grade: Garden - Plant Parts and Plant Needs
- **2ND** Grade: Chickens
- **3RD** Grade: Composting
- **4TH** Grade: Vermiculture
- **5TH** Grade: Greenhouse



# Georgia Elementary Ag Pilot Program

- 28 schools chosen from the state of Georgia
- Created based on Middle, Junior High, and High School Ag Standards
- 4 Domains for each grade level:
  - Agricultural Systems
  - Foundations of Agriculture
  - Leadership/Career Readiness
  - Natural Resources
- Focuses on FFA 3 component model
- Program will begin August 2019 and piloted for 3 years.
- Standards will be available at [www.georgiastandards.org](http://www.georgiastandards.org)

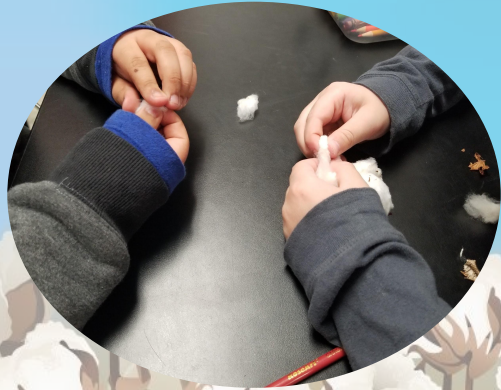
# FFA 3 Component Model



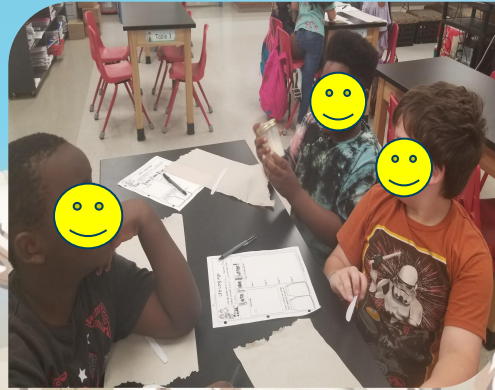


# What does Ag in the Classroom Look Like?

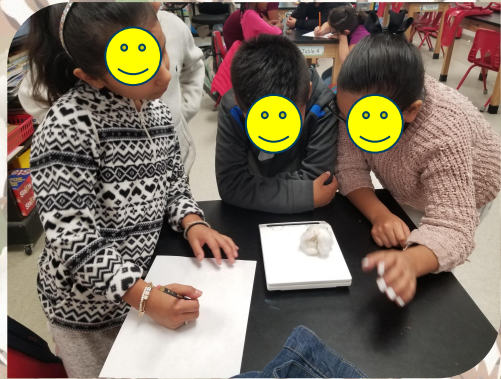
**King Cotton Activity**



**Making Butter Activity**



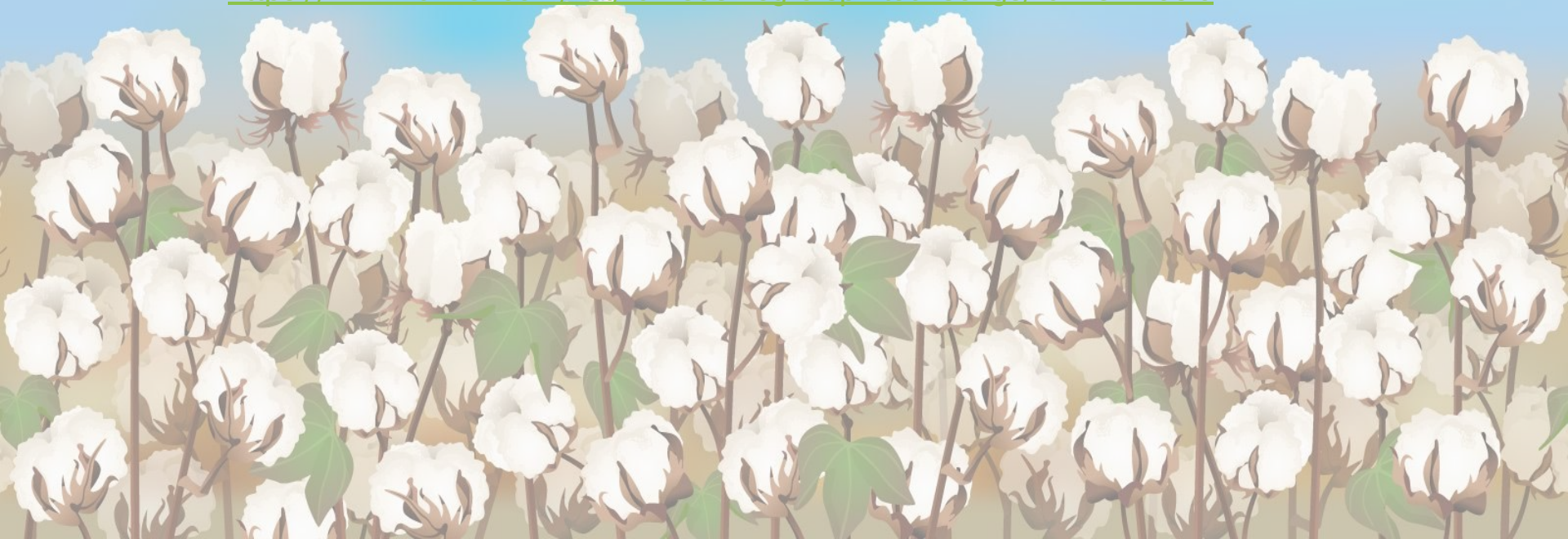
**Pollen and Nectar Activity**



Now for the FUN!!!!

## King Cotton Activity - YOUR TURN

<https://www.ranker.com/list/famous-negro-spiritual-songs/ranker-music>



# Closing

- **NearPod Parking Lot to answer questions**
- **If time runs out - use 2nd slide on nearpod for DO YOU WANT TO CONNECT**
- **Draw for Door Prizes**

# Resources



National Ag Classroom - [www.agclassroom.org](http://www.agclassroom.org)

American Farm Bureau Foundation for Agriculture - [www.agfoundation.org](http://www.agfoundation.org)

My American Farm - [www.myamericanfarm.org](http://www.myamericanfarm.org)

Georgia Cotton Commission - [www.georgiacottoncommission.org](http://www.georgiacottoncommission.org)

Georgia Department of Education - [www.georgiastandards.org](http://www.georgiastandards.org)

