



Missouri University of Science and Technology
Scholars' Mine

Electrical and Computer Engineering Faculty
Research & Creative Works

Electrical and Computer Engineering

01 Jan 2002

Interactive Virtual Laboratory for Experience with a Smart Bridge Test

Elizabeth C. Eckhoff

Vicki M. Eller

Steve Eugene Watkins

Missouri University of Science and Technology, watkins@mst.edu

Richard Hall

Missouri University of Science and Technology, rhall@mst.edu

Follow this and additional works at: https://scholarsmine.mst.edu/ele_comeng_facwork

 Part of the [Electrical and Computer Engineering Commons](#)

Recommended Citation

E. C. Eckhoff et al., "Interactive Virtual Laboratory for Experience with a Smart Bridge Test," *Proceedings of the American Society for Engineering Education Annual Conference and Exposition (2002, Montreal, Canada)*, pp. 8519-8528, American Society for Engineering Education (ASEE), Jan 2002.

This Article - Conference proceedings is brought to you for free and open access by Scholars' Mine. It has been accepted for inclusion in Electrical and Computer Engineering Faculty Research & Creative Works by an authorized administrator of Scholars' Mine. This work is protected by U. S. Copyright Law. Unauthorized use including reproduction for redistribution requires the permission of the copyright holder. For more information, please contact scholarsmine@mst.edu.

Interactive Virtual Laboratory for Experience with a Smart Bridge Test

**Elizabeth C. Eckhoff, Vicki M. Eller, Steve E. Watkins, Richard H. Hall,
University of Missouri-Rolla**

Abstract

Virtual laboratory experiments can be cost effective, convenient instructional resources that have appeal to a wide range of learning styles. Expensive, time-consuming laboratory tests can be experienced repeatedly and remotely using interactive simulations and original video footage or animations. A virtual experiment can incorporate meaningful exercises, procedural options, and background hyperlinks to create a comprehensive “hands on” environment. Also, it may be used as preliminary training for the actual experiment.

An interactive LabVIEW-based laboratory for a load test simulation of an existing demonstration bridge was created. This smart truss bridge is instrumented with fiber optic strain sensors situated on the trusses. The user interface incorporates a synchronized image of the loaded bridge and a graph of the associated strains. A static display mode allows the choice of load placement and of data for single or multiple sensors. A continuous display mode shows the dynamic images of the bridge and strains on truss members. Options include the display of experimental data or of theoretical calculations. Hyperlinks give access to information on the sensors, the bridge construction, and the theoretical analysis. The program interface can also be used in the actual experiment to display data. The intended application is a laboratory for an interdisciplinary class on smart materials and sensors. The LabVIEW program can be easily modified for tests on other structures such as a full-scale bridge.

I. Introduction

Virtual laboratory experiments are practical and effective educational tools. They may be used to allow students a more comprehensive, flexible experience and to prepare students for actual laboratory performance. The benefits include cost effectiveness and convenience. With a virtual simulation, a procedure can be repeated without cost of materials and labor, wear/damage on equipment, or loss of class time. Also, multiple equipment stations are not needed, lengthy experimental setups are avoided,¹ and one-time or remote field tests are facilitated. With a virtual laboratory, the student users control the pace, frequency, and time of the experiment. Also, distance learners can participate.²

Virtual laboratories have been found to be beneficial to students, improving their learning and helping them to understand the coursework. Research at the University of Arizona examined whether “modern simulation and communication technologies enhance delivery, learning and retention” and concluded that they were effective, especially for “difficult” topics.³ Virtual laboratory experiences can reinforce concepts from lecture material, convey practical issues associated with actual experiments,^{1,4} and illustrate applications absent from textbooks.⁵ They appeal to different learning preferences through the interactivity of the simulations. Using the Kolb model of learning styles,⁶ the student preferring concrete experience and reflective observation will benefit from the repeatability of the experiments. The student preferring concrete experience and active experimentation can adopt a trial-and-error approach to test potential theories and relationships. The student preferring abstract conceptualization and active experimentation can look for expected answers based on the conceptual premises. The student preferring abstract conceptualization and reflective observation can slow the pace of the experiment and explore all available information on the experiment.

This paper describes an interactive, LabVIEW-based resource for a load test simulation of an existing demonstration bridge. This bridge is a small, laboratory-sized truss structure that is instrumented with fiber-optic strain sensors. It is used to demonstrate structural and measurement concepts in an interdisciplinary engineering class on smart materials and sensors. The associated virtual laboratory is designed to display simultaneous images and strain data for complex experimental and theoretical load tests. Features include multiple options for data display and testing parameters as well as detailed supplemental information on the sensors, bridge, and analysis. Consequently, student users can tailor their learning experience per their interest and preferences. Applications of the interactive software are planned for other demonstration and field structures.

II. The Smart Truss Bridge Project

The smart truss bridge is an instrumented, 2.44-m (8-ft.) structure developed for use in an interdisciplinary course funded by the National Science Foundation.^{7,8} The course activities consist of multi-disciplinary topics, collaborative exercises, and hands-on applications.⁹ The technical interest area is smart structures¹⁰ which includes the intelligent monitoring of structures using permanent sensing systems and which requires engineering abilities crossing traditional boundaries. The truss bridge provides an introductory laboratory experience that integrates materials, structural analysis, and measurement. However, available time with the bridge is limited. Students with different majors, interests, and preferences can benefit from additional, flexible laboratory experience. A parallel virtual version of the laboratory addresses this need.

The bridge is shown in Figure 1. It consists of two aluminum trusses of four bays each. End supports, internal girders, and decking complete the design. The structure represents a scaled version of common steel highway and railroad bridges and provides an educationally-rich balance of simplicity and complexity.¹¹ It is easily assembled, can be reconfigured, and provides measurable strains for light loads. The pin-connected members are 1.9-cm (3/4-in.) aluminum equal angles. The 61-cm (2 ft.) deck pieces are independent for each bay and have a track to

guide a weighted cart. The estimated linear capacity of each truss alone exceeds 668 N (150 lbs.). Ideally, the members experience only axial tension or compression. This smart structure has permanent fiber-optic sensors on selected members to measure the axial strain.^{7,12}

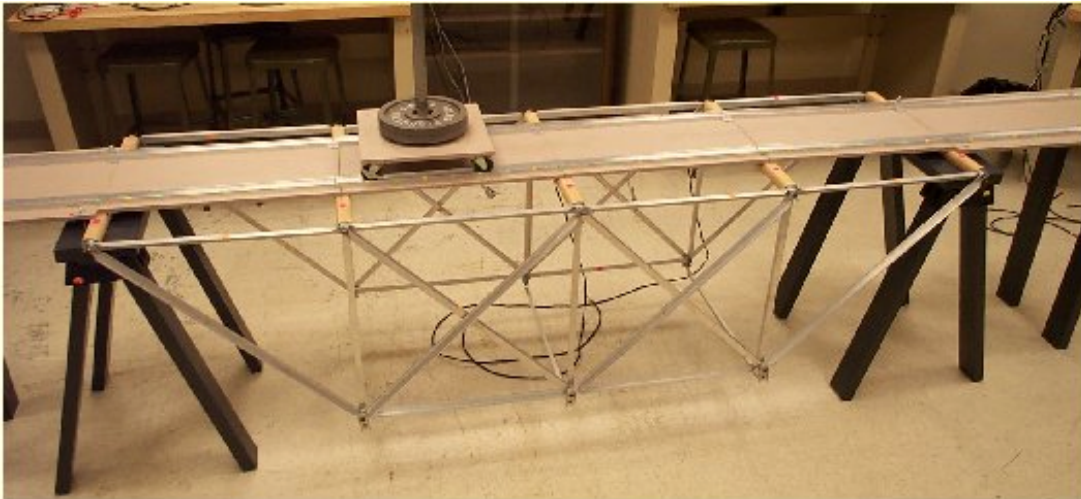


Figure 1: Smart Truss Bridge with Weighted Cart and Aluminum Members.

The objectives of the laboratory exercises, both actual and virtual, are to show load-induced structural strain patterns and to related practical material, structural, and sensing concepts. The strain in selected members will vary with load magnitude and placement. A pin-and-roller-supported truss model is illustrated in Figure 2 with member designations. The V, H, and D prefixes denote vertical, horizontal, and diagonal orientations, respectively. Sensors provide experimental data for members V1, H2, D3, D4, and H5. To support the experiments, a theoretical analysis using RISA-2D (Rapid Interactive Structural Analysis) modeling software was available.^{7,13} For example, the normalized strain pattern in member D3 as a function of load position is plotted in Figure 3. Note that the strain magnitude will be proportional to weight within the linear range. The overall tension and compression characteristics of the truss can be shown graphical as in Figure 4. Experimental data is similar.

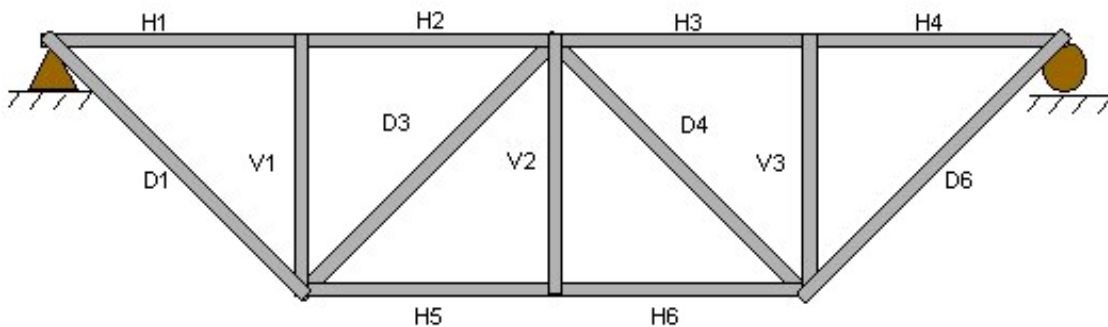


Figure 2: Truss Model with Pin-Connected Members and Pin and Roller Supports.⁷

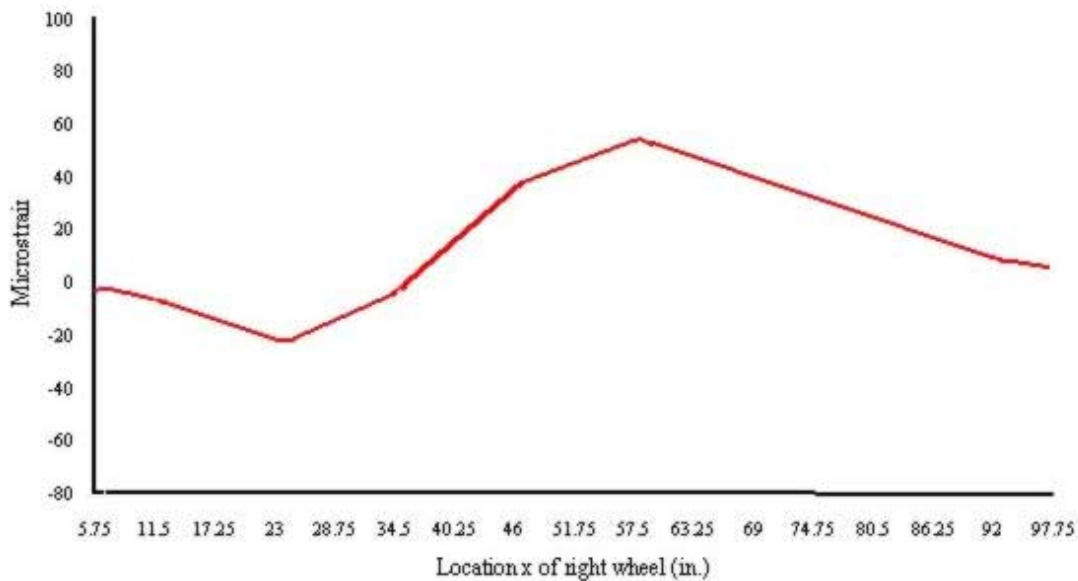


Figure 3: Compressive Strain for 668 N (150 lbs.) versus Load Position for Member D3.⁷

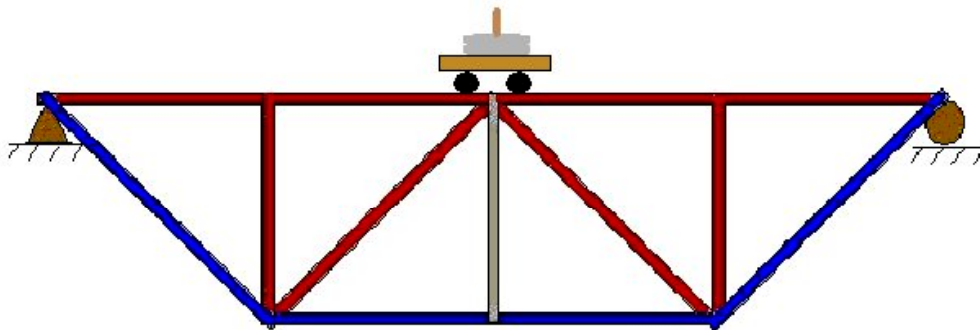


Figure 4: Truss Strain Characteristics for a Centered Load. Red members H1, H2, H3, H4, V1, V3, D3, and D4 are in compression and blue members H5, H6, D1, and D6 are in tension.

III. Virtual Experiment Design

The virtual LabVIEW-based experiment presents the experimental or theoretical performance of the smart truss bridge under load. The design was guided by three criteria:

- Simultaneous visual and numerical indicators should be displayed,
- Multiple data and display options should be available, and
- Supplemental information should be readily accessible.

Also, the programming should allow easy modification to incorporate other data and image files. The visual indicator displays a photograph of the bridge with the weight in position or a drawing of the bridge with qualitative graphical aspects such as color-coded characteristics of Figure 4. The numerical indicator plots the strain for a selected member or selected members. The interactivity options are summarized in Table 1. Any combination of the options may be

selected. Note that the visual indicator is coordinated with numerical data, i.e. the weight placement or color coding in the image matches the current display of strain. The simulation was created with LabVIEW which is a graphical programming language with numerous data acquisition, processing, and display features.¹⁴

Table 1: Features of Interactive Virtual Laboratory

	User Options	
Type	Experimental Test	Theoretical Analysis
Image	Photograph of Bridge	Graphic of Bridge
Measurement	Single Sensor	Multiple Sensors
Load	Stationary	Moving
Information Links	Bridge (Sensors, Design, etc.)	Test/Analysis Details

The user interface for the LabVIEW program is shown in Figure 5. The top screen displays the image output and the bottom shows the graphical output of the strain data. To the right of the graph are the user options. The first set of options is the four load choices. Below the weight options is the choice of data type. The user may choose to display experimental or theoretical data. The last set of options are the five truss members that can be displayed. The user may choose one member or any combination of the five. A small graphic depicting the truss with labeled members is displayed below the truss options to help remind the user what truss is being selected and displayed. The start, stop, clear, quit, and information options are located below the graphic and are Boolean parameters that are built into an array. This array is then sent to a *search function*, testing for a true variable indicating one of the buttons had been pressed. This information is then fed into a *case loop* which then finds the case corresponding to the true Boolean which tells the program which case to run.

A block diagram of the dataflow is shown in Figure 6. The LabVIEW programming in Figure 7 shows the “run” case of the program, which is the section where the data and image files are read and sent to the front panel.¹⁴ The program used for this virtual experiment consists of three major parts – a *while loop*, a *case loop*, and the image and data files. A *while loop* was used to create a programmatic start button. When the run button in LabVIEW is pressed, the program will not run until the start button on the front panel is pressed, allowing the user to make data selections. Once the user has made the appropriate selections the start button can then be pressed and the data is sent to a *case loop*. In the *case loop*, the correct image and data files for the selected options are accessed. In this way, the program would be easily applied to another structure or expanded for more options by simply changing the file names. After the correct strain data folder and image folder are opened that information is then formatted for the corresponding graphical and imagery output. Once formatted the data is sent to the front panel to be displayed. Throughout the process the user has the option to stop the program and display stationary data. If the user stops the data by pressing the stop button on the front panel and then the start button is again pressed, the data is read from where it was before the stop button was pressed. The clear button sends a constant zero to the graph and an empty jpeg image to the image screen.

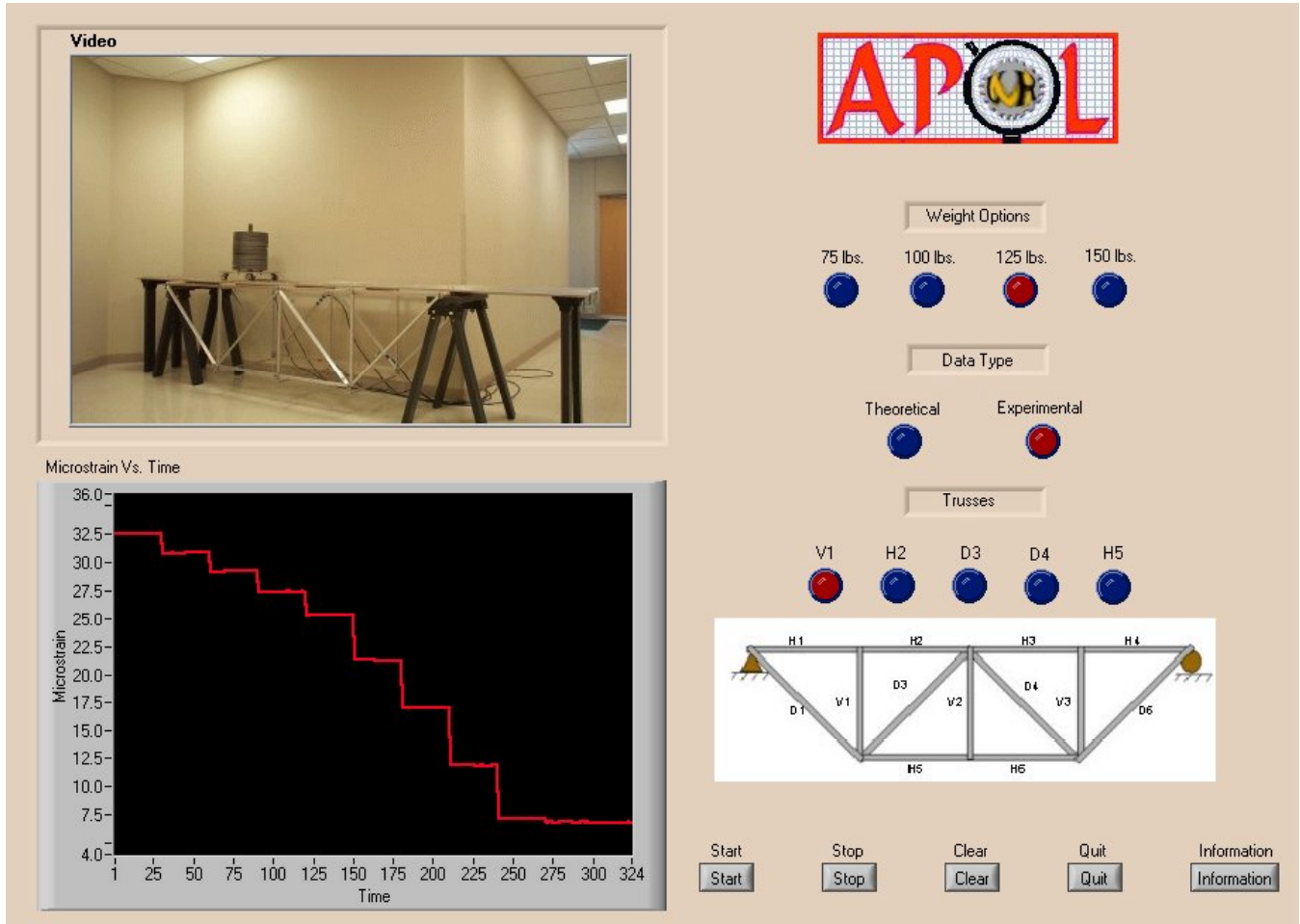


Figure 5: User Interface for Virtual Laboratory.

IV. Usage and Application

The educational goals for the virtual laboratory are for students to integrate knowledge from several discipline areas and to understand the material, structural, and measurement relationships in a real bridge. The intended parent course is the smart materials and sensors course^{8,9} and laboratory audience is interdisciplinary engineering students at the senior-elective undergraduate or introductory graduate level. Fundamental concepts from the interrelated topical areas are illustrated with instrumented truss bridge and a load test. The virtual laboratory may be used as an independent exercise or as a preliminary assignment before testing the actual smart truss bridge.

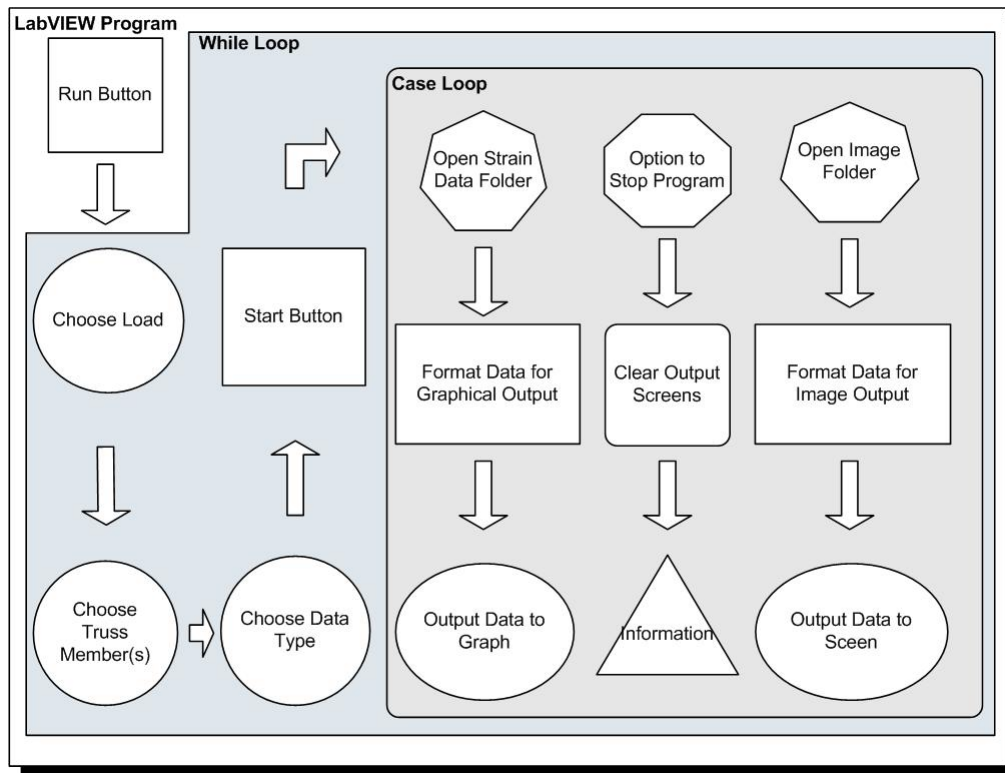


Figure 6: Block Diagram of Data Flow

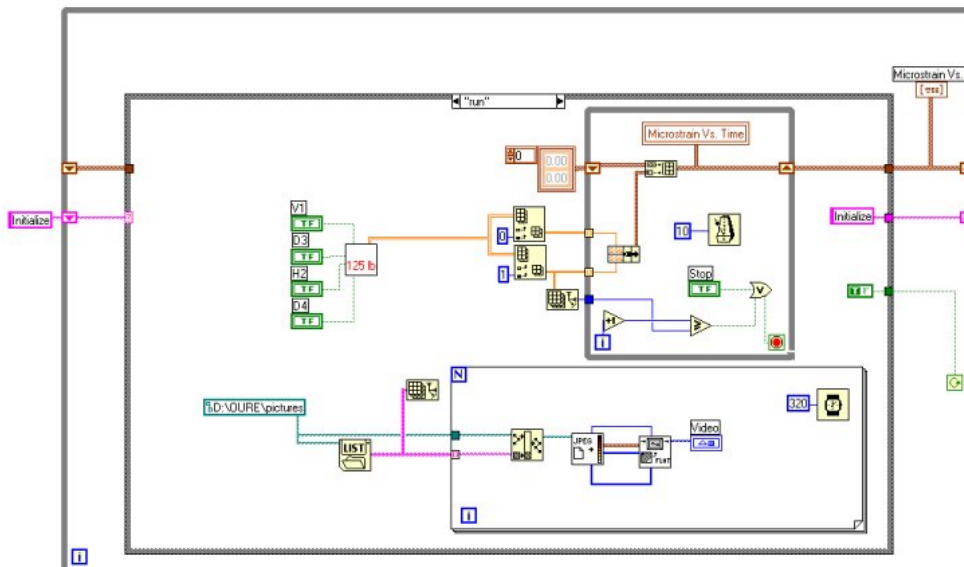


Figure 7: LabVIEW Programming for "run" Case

The software design model is shown in Figure 8.^{15,16} It should incorporate a balance of simplicity and complexity. Users have conflicting needs for consistent and usable content that is easy to understand and navigate and complex features that provide a flexible, user-center learning environment. Consistency and usability are provided by limiting the software module to just the smart truss bridge and by producing similar control buttons, images, and data displays for the experimental and theoretical tests. Other linked information is available, but does not clutter the main user interface. Complex multi-modality features include the simultaneous visual and data displays and the options for experimental and analytical results. Furthermore, significant interactivity and adaptability are provided by the other options for display and supplemental information. Planned companion software for other bridge tests will use a near-identical user interface to reinforce the overall effectiveness.

Assessment of the software is planned and has two stages.^{15,17} The first stage is a formative investigation in which a small sampling of students are studied in a controlled environment. The effectiveness of design with regard to consistency, usability, multi-modality, interactivity, and adaptability will be evaluated. The second stage is summative and will be done in the associated course. It will include the Smart Truss Bridge virtual laboratory and companion virtual laboratories based on other archived field tests.

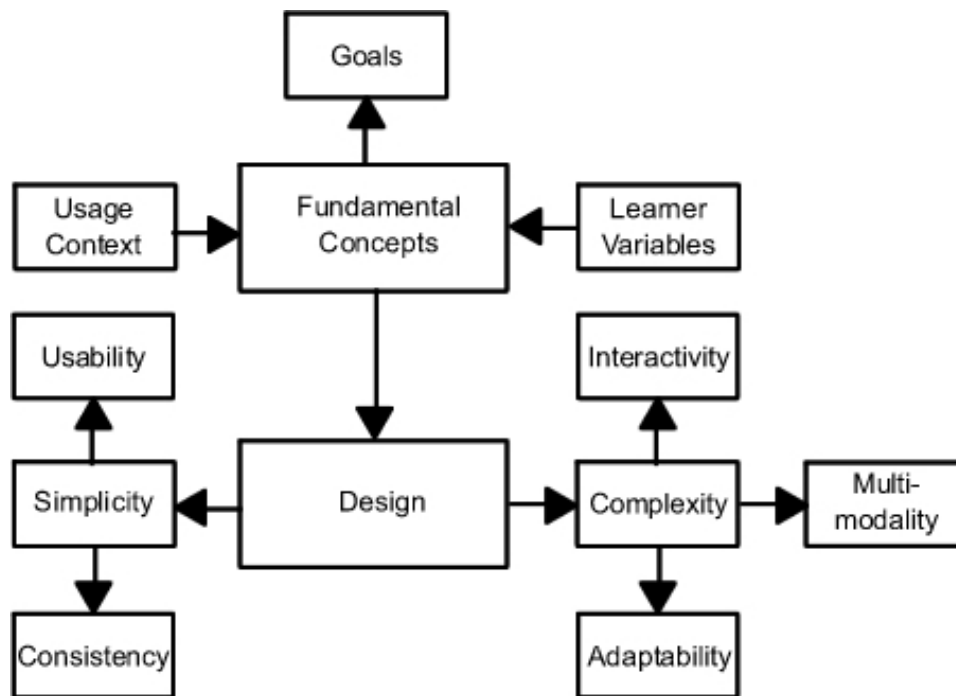


Figure 8: Design Philosophy for Multimedia Software.

V. Conclusions and Future Work

The LabVIEW-based load-test simulation provides students with an interactive learning resource. It is a virtual laboratory experiment that presents both experimental and theoretical load tests on a laboratory-sized bridge. The smart truss bridge is an aluminum truss structure with fiber optic sensors to measure strain. It provides an introductory laboratory experience in the smart structures area that integrates materials, structural analysis, and measurement. The virtual experiment displays simultaneous images and strain data for complex load tests. Student users can select from a variety of image, display, and information options to create a rich “hands-on” environment. The LabVIEW environment is useful since it can be programmed with a variety of display options and interactivity, can be configured for Web-based access or as executable software, and can access stored image and data files or real-time information.¹⁴

Virtual laboratories can enhance learning as a supplement or a preparation for laboratory experience. The Smart Truss Bridge virtual simulation provides a comprehensive experience with an archived experiment and a theoretical analysis. The future plans for this project include the incorporation of more background information on the bridge and test, the setup of distance access through the Web site of the associated course, the evaluation and revision of features through student assessment, and the addition of other simulations. In particular, a field test of an instrumented bridge¹⁸ will be setup in a companion simulation.

Acknowledgements

This work was supported by the National Science Foundation through Combined Research-Curriculum Development Grant # EEC-9872546 with Mary Poats as technical contact. The Instructional Software Development Center at the University of Missouri-Rolla provided the programming and assessment resources. Supplemental student support was obtained from the Opportunities for Undergraduate Research Experience program at the University of Missouri-Rolla. Useful assistance from Bethany Konz and Josh Corra related to the Smart Truss Bridge is greatly appreciated.

Bibliography

1. M. E. Marias, V. M. Cazared, and E. E. Ramos, “A Virtual Laboratory for Introductory Electrical Engineering Courses to Increase the Student Performance,” *ASEE/IEEE Frontiers in Education Conference*, October 2001.
2. Andrew L. Sears and Steve E. Watkins, “A Multimedia Manual on the World Wide Web for Telecommunications Equipment,” *IEEE Trans. Educ.* **39**(3), 342-348, (1996).
3. M. Budhu, “Enhancing Instructions Using Interactive Multimedia Simulations,” *Simulation*, **76**(4), 2001.
4. S. E. Yarbrough and R. Gilbert, “Development, Implementation, and Preliminary Assessment of Virtual Laboratory,” *Journal of Professional Issues in Engineering Education and Practice*, October 1999.
5. A. Spanias, S. Urban, A. Constantinou, M. Tampi, A. Clausen, X. Zhang, J. Foutz, and G. Stylianou, “Development and Evaluation of a Web-Based Signal and Speech Processing Laboratory for Distance Learning,” *2000 IEEE International Conference on Acoustics, Speech and Signal Processing*, vol. 6, June 2000.
6. D. M. Smith and D. A. Kolb, *User’s Guide for the Learning-Style Inventory*, (Hay/McBer, Boston, MA, 1996).

7. Bethany A. Konz, "Development of a Smart Structure for Educational Showcase," M.S. Thesis, University of Missouri-Rolla, 2001.
8. Steve E. Watkins and Richard H. Hall, *Smart Engineering*, University of Missouri-Rolla, (2001), Available WWW: <http://www.umar.edu/~smarteng>.
9. Steve E. Watkins, Richard H. Hall, K. Chandrashekhara, and Julie M. Baker, "Interdisciplinary Learning through a Connected Classroom," Submitted to *J. of Engineering Education*.
10. W. B. Spillman, Jr., "Sensing and Processing for Smart Structures," *Proceedings of the IEEE*, **84**(1), 6877, (January 1996).
11. Douglas R. Carroll, "Bridge Engineering for the Elementary Grades," *J. of Engineering Education*, **86**(3), 221-226, (1997).
12. Eric Udd, "Fiber Optic Smart Structures," *Proceedings of the IEEE*, **84**(1), 60-67, January 1996.
13. RISA Technologies, *What RISA Stands For*, (2001), Available WWW: <http://www.risatech.com/risainfo/risainfohtm>.
14. Lisa K. Wells and Jefferey Travis, *LabVIEW for Everyone*, (Prentice Hall, Upper Saddle River, NJ, 1997).
15. Vicki M. Eller, Steve E. Watkins, Richard H. Hall, Joel Balestra, and A.S. Rao, "Multimedia Web-based Resources for Engineering Education: The Media Design and Assessment Laboratory at UMR," *Proceedings of the ASEE 2001 Annual Conference*, 24-27 June 2001, Albuquerque, NM.
16. Richard H. Hall, Steve E. Watkins, and Vicki M. Eller, (in press) "A Model of Web Based Design for Learning," in *Handbook of Distance Education*, edited by M. G. Moore and B. Anderson (Erlbaum, Mahwah, NJ, 2002).
17. Richard H. Hall, *Media Design and Assessment Laboratory*, University of Missouri-Rolla, (1999), Available WWW: <http://www.umar.edu/~media>.
18. Steve E. Watkins, John F. Unser, Antonio Nanni, K. Chandrashekhara, and A. Belarbi, "Instrumentation and Manufacture of a Smart Composite Bridge for Short-Span Applications," *Smart Structures and Materials 2001: Smart System for Bridges, Structures, and Highways*, Proc. SPIE **4330**, 147-157, 2001.

ELIZABETH C. ECKHOFF

Elizabeth C. Eckhoff is senior at the University in Missouri-Rolla. She will graduate this August with a B.S. in Electrical Engineering. Her work in the Media Design and Assessment Laboratory in the Instructional Software Development Center includes web-design and programming.

VICKI M. ELLER

Vicki M. Eller is a graduate student in electrical engineering and is programmer analyst in the Instructional Software Development Center at the University of Missouri-Rolla. Her interdisciplinary research projects involve web-based learning resources for engineering courses. She has been appointed the Student Representative to the University of Missouri Board of Curators for 2002-2003. She received a B.S. in electrical engineering from the University of Missouri-Rolla in 2000.

STEVE E. WATKINS

Dr. Steve E. Watkins is Director of the Applied Optics Laboratory and Associate Professor of Electrical and Computer Engineering at the University of Missouri-Rolla. He is a member of several interdisciplinary research teams with projects addressing educational improvements in technical communication and web-based resources and the application of fiber optic sensor systems. He received his Ph.D. from the University of Texas at Austin in 1989.

RICHARD H. HALL

Dr. Richard H. Hall is Director of the Media Design and Assessment Laboratory and Associate Professor of Information Science and Technology at the University of Missouri-Rolla. His research interests are educational psychology emphasizing cooperative/collaborative learning and instructional technology emphasizing World Wide Web enhanced instruction. He received a Ph.D. in Experimental Psychology from Texas Christian University in 1988.