

Haverford College

## Haverford Scholarship

---

Faculty Publications

Astronomy

---

2011

### Galaxy Zoo: Bar Lengths in Local Disc Galaxies

Karen Masters

*Haverford College*, [klmasters@haverford.edu](mailto:klmasters@haverford.edu)

Ben Hoyle

Robert C. Nichol

Edward M. Edmondson

Follow this and additional works at: [https://scholarship.haverford.edu/astronomy\\_facpubs](https://scholarship.haverford.edu/astronomy_facpubs)

---

#### Repository Citation

Maasters, Karen; et al. (2011) "Galaxy Zoo: Bar Lengths in Local Disc Galaxies." *Monthly Notices of the royal Astronomical Society*, 415(4):3627-3640.

This Journal Article is brought to you for free and open access by the Astronomy at Haverford Scholarship. It has been accepted for inclusion in Faculty Publications by an authorized administrator of Haverford Scholarship. For more information, please contact [nmedeiro@haverford.edu](mailto:nmedeiro@haverford.edu).

# Galaxy Zoo: bar lengths in local disc galaxies<sup>★</sup>

Ben Hoyle,<sup>1,2,3†</sup> Karen. L. Masters,<sup>2</sup> Robert C. Nichol,<sup>2</sup> Edward M. Edmondson,<sup>2</sup>  
Arfon M. Smith,<sup>4</sup> Chris Lintott,<sup>4,5</sup> Ryan Scranton,<sup>6</sup> Steven Bamford,<sup>7</sup>  
Kevin Schawinski<sup>8,9</sup> and Daniel Thomas<sup>2</sup>

<sup>1</sup>*Institute for Sciences of the Cosmos (ICC-UB, IEEC), University of Barcelona, Martí i Franques 1, Barcelona 08024, Spain*

<sup>2</sup>*Institute of Cosmology & Gravitation, University of Portsmouth, Dennis Sciama Building, Portsmouth PO1 3FX*

<sup>3</sup>*Consejo Superior de Investigaciones Científicas, Serrano 117, Madrid 28006, Spain*

<sup>4</sup>*Oxford Astrophysics, Department of Physics, University of Oxford, Denys Wilkinson Building, Keble Road, Oxford OX1 3RH*

<sup>5</sup>*Adler Planetarium, 1300 S. Lakeshore Drive, Chicago, Illinois, IL 60605, USA*

<sup>6</sup>*University of California, Davis, One Shields Avenue, CA 95616, USA*

<sup>7</sup>*Centre for Astronomy & Particle Theory, University of Nottingham, University Park, Nottingham NG7 2RD*

<sup>8</sup>*Einstein Fellow, Department of Physics, Yale University, New Haven, CT 06511, USA*

<sup>9</sup>*Yale Center for Astronomy and Astrophysics, Yale University, PO Box 208121, New Haven, CT 06520, USA*

Accepted 2011 April 28. Received 2011 April 28; in original form 2010 October 8

## ABSTRACT

We present an analysis of bar length measurements of 3150 local galaxies in a volume-limited sample of low-redshift ( $z < 0.06$ ) disc galaxies. Barred galaxies were initially selected from the Galaxy Zoo 2 project, and the lengths and widths of the bars were manually drawn by members of the Galaxy Zoo community using a Google Maps interface. Bars were measured independently by different observers, multiple times per galaxy ( $\geq 3$ ), and we find that observers were able to reproduce their own bar lengths to 3 per cent and each others' to better than 20 per cent. We find a colour bimodality in our disc galaxy population with bar length, i.e. longer bars inhabit redder disc galaxies and the bars themselves are redder, and that the bluest galaxies host the smallest galactic bars ( $< 5 h^{-1}$  kpc). We also find that bar and disc colours are clearly correlated, and for galaxies with small bars, the disc is, on average, redder than the bar colours, while for longer bars the bar then itself is redder, on average, than the disc. We further find that galaxies with a prominent bulge are more likely to host longer bars than those without bulges. We categorize our galaxy populations by how the bar and/or ring are connected to the spiral arms. We find that galaxies whose bars are directly connected to the spiral arms are preferentially bluer and that these galaxies host typically shorter bars. Within the scatter, we find that stronger bars are found in galaxies which host a ring (and only a ring). The bar length and width measurements used herein are made publicly available for others to use (<http://data.galaxyzoo.org>).

**Key words:** astrometry – galaxies: general.

## 1 INTRODUCTION

Galactic bars are extended linear structures crossing the centre of a substantial fraction of disc galaxies. They are comprised of overdensities of both luminous and dark matter (see e.g. Sandage 2005), and unlike spiral arms they are significant material asymmetries. Bars therefore are able to contribute to the redistribution of matter

in the galaxy through exchanging angular momentum with the spiral arms, disc, bulge and rings (see Kormendy & Kennicutt 2004; Athanassoula et al. 2009b). Bars are thought to form by disc instabilities and have been found to occur in up to two-thirds of all disc galaxies. Models indicate they can be short-lived, long-lived or periodic, depending on the disc and bulge properties, and the interaction history of the galaxy (see e.g. Sellwood 1985; Athanassoula et al. 2009b; Combes 2010).

The actual fraction of disc galaxies that contain bars has been shown to depend on the method of bar detection and the sample selection, e.g. Eskridge et al. (2000) used near-infrared images of 186 spiral galaxies and found that  $\sim 70$  per cent of galaxies were barred when visually inspected, and Menéndez-Delmestre et al. (2007)

<sup>★</sup>This publication has been made possible by the participation of more than 200 000 volunteers in the Galaxy Zoo project. Their contributions are individually acknowledged at <http://www.galaxyzoo.org/Volunteers.aspx>.  
†E-mail: benhoyle1212@icc.ub.edu

using 151 Two Micron All Sky Survey (Jarrett et al. 2003) galaxies found  $\sim 60$  per cent contained bars, as identified by fitting ellipses to the light profiles. Furthermore, Giordano et al. (2010) used 253 disc galaxies in the Virgo cluster and found that  $\sim 30$  per cent were barred after visual inspection of high-resolution near-infrared images. Recently, Nair & Abraham (2010) found that the fraction of barred spiral galaxies is a strong function of stellar mass and star formation history, and Masters et al. (2011) studied the fraction of spiral galaxies with bars as a function of galaxy properties, and found that the fraction increases for redder galaxies and those galaxies hosting a bulge.

Bar dimensions are equally difficult to define and measure, but techniques such as visual estimation, ellipse fitting or methods based on Fourier analysis have been used (e.g. Elmegreen & Elmegreen 1985). Where measurements have been made, bars have been found to be longer by a factor of  $\sim 2.5$  in early-type disc galaxies than late-type disc galaxies (Erwin 2005).

These early observational results have been complemented by  $N$ -body simulations, but due to the computational difficulty involved in producing barred galaxies in full hydrodynamic simulations, recent works have only been able to examine the properties of a handful of barred systems, and their results, while providing insight for the creation and roles of bars in galaxies, have yet to be tested on large observational data sets (e.g. see Athanassoula et al. 2009b). The premise of this paper is to present the results of analysis on a large sample of observationally identified barred galaxies, and compare with available simulations.

Early work by Athanassoula (2003) combined theoretical descriptions of bar, disc and bulge components, and a suite of 160 different  $\sim 10^6$  dark matter particle simulations. She finds that bars are stronger, and rotate slower, in the presence of a large bulge, which is attributed to an exchange of angular momentum, in agreement with an earlier observational studies of 32 galaxies (Athanassoula & Martinet 1980) and more recently with 300 galaxies (Gadotti 2010). Further observational work described in Kormendy & Kennicutt (2004) combine results from theory and simulations, which suggests bars drive gas inwards, building a bulge which may then play a role in diminishing the bar (see also Kormendy 1979; Elmegreen & Elmegreen 1985).

Scannapieco et al. (2010) simulate eight isolated Milky Way mass galaxies at redshift  $z = 0$  (see also Scannapieco et al. 2009, for details) using  $\sim 10^6$  particles, and include prescriptions for gas, star formation, chemical enrichment, cooling and feedback, and find that bar, disc and bulge colours are correlated and that simulated bars are predominantly found in bluer galaxies. The authors go to great care to present their results such that they can be directly compared with Sloan Digital Sky Survey (SDSS; Abazajian et al. 2009) observations such as those exhibited in this paper.

Galactic bars have been observed to be connected in different ways to the spiral arms (if present), or to a ring structure encompassing the bar (if present) – in which case the bar and spiral arms are not necessarily aligned (for a review of bar galaxy morphology, see Sandage 2005). The presence of a ring was found to be more likely in strongly barred systems by Kormendy & Kennicutt (2004), although observations of 147 galaxies (Buta et al. 2005) suggest that, in contrast to the above result, galaxies with stronger bars have spiral arms and that weaker bars are more likely to be ringed, when compared with the global average.

In this paper, we attempt to test further the above simulations using hand drawn bar length measurements by multiple observers and visual classifications of 3150 SDSS galaxies, by asking the following questions.

(i) How are the colours of galaxies, bars and discs correlated? Simulations suggest bar and disc colours are correlated (Scannapieco et al. 2010).

(ii) How do the colours change as a function of bar length? Simulations show that longer bars inhabit bluer disc galaxies (Scannapieco et al. 2010).

(iii) Are other galaxy properties affected by bar length? Simulations find that galaxies with a large central bulge host longer bars (Athanassoula 2003).

(iv) Is bar strength or length correlated with the presence of a ring? Previous observations suggest that galaxies with a ring have weaker bars (Buta et al. 2005) than the population average.

(v) In addition to the above questions, we also aim to understand how the bar-to-spiral arm connection is different in galaxies with longer bars.

To achieve these aims, we initiated a satellite Galaxy Zoo project using data drawn from interim results of Galaxy Zoo 2<sup>1</sup> (hereafter GZ2; see Lintott et al., in preparation; Masters et al. 2011), which itself is an extension of the original Galaxy Zoo project (Lintott et al. 2008, 2011). We examine the bar and galaxy properties of 3150 galaxies using a Google Maps powered website which allows members of the Galaxy Zoo community to measure the lengths and widths of bars in disc galaxies selected from GZ2. This provides bar measurements of 3150 barred galaxies. We also collect data describing the connection of the spiral arms (if they exist) to the ring (if it exists) and the bar.

Masters et al. (2011) analysed 13 665 galaxies imaged by the SDSS and visually identified as disc galaxies from GZ2, and observed that the fraction of barred galaxies increases from 10 to 50 per cent with the prominence of the central bulge (or  $\text{fracdeV}$ ;<sup>2</sup> see Masters et al. 2010b). They also find that redder ( $g - r$ ) ‘early-type’ spiral galaxies are more likely to host galactic bars than their bluer ‘late-type’ spiral counterparts. We loosely make the distinction between early- and late-type disc galaxies using the colour cut  $g - r = 0.6$  (Masters et al. 2010a).

The format of the paper is the following. In Section 2 we describe the bar drawing website and present usage statistics. We describe the input data sample, and observer statistics and agreement in Section 3. We continue in Section 4 by deriving bar properties and measuring ‘bar’ and ‘disc’ colours and correlating bar properties against galaxy properties, and then show statistics split by how the spiral arms are connected to the bar. We discuss implications and extensions to this work and conclude in Section 5. To calculate distances, we assume a flat  $\Lambda$  cold dark matter ( $\Lambda$ CDM) cosmology with  $\Omega_m, \Omega_\Lambda, H_0 = (0.3, 0.7, 70 \text{ km s}^{-1} \text{ Mpc}^{-1})$  and  $h = H_0/100$ .

## 2 THE BAR DRAWING WEBSITE

The bar drawing website<sup>3</sup> uses HTML and Javascript to call the Google Maps API<sup>4</sup> interface with the parameter `mapTypes` set to `G_SKY_MAP_TYPES` to view celestial maps. Composite colour images ( $g, r$  and  $i$  band) from SDSS Data Release 6 (Adelman-McCarthy et al. 2008) (excluding the southern stripes) are available in the Google Maps interface, and we centre the map on the galaxy

<sup>1</sup> <http://zoo2.galaxyzoo.org>

<sup>2</sup> The fraction of the best-fitting light profile which comes from a de Vaucouleurs fit as opposed to an exponential fit to the SDSS  $r$ -band light profile.

<sup>3</sup> <http://www.icg.port.ac.uk/~hoyle/bars/> shows a working example, but is not collecting data.

<sup>4</sup> <http://code.google.com/apis/maps/>

**Table 1.** Possible configurations for connecting the spiral arms (if present) to the ring (if present) and the bar in barred galaxies. The observers were asked to select the most suitable category.

Acronym	Description
NSR	Spiral arms and ring are not present.
OR	Spiral arms are not present and the bar is connected to the ring.
R	Spiral arms are connected to the ring around the bar.
S	Spiral arms are connected to the end of the bar.
SR	Spiral arms are connected to a mixture of a ring and the bar.
U	The observer is unsure or is unable to decide.

to be classified, and provide a galaxy marker if the observer was unsure of which galaxy to classify. Some Google Maps functionality is available to the observer, e.g. the adjustment of the level of zoom and the examination of nearby space through dragging of the map.

The SDSS images in Google Maps have varying levels of quality, some of which are lower than the original SDSS images. The varying quality allows galaxies to be viewed to different zoom levels in the Google Maps interface. We choose a standard zoom level suitable for most galaxies, but some galaxies appeared as a blank screen, and the zoom adjustment allowed these galaxies to be viewed; additionally, it was possible to magnify some galaxies. The variable quality of the images means that images cannot be magnified to the same detail as is available in, for example, the SDSS tool *Navigate*,<sup>5</sup> and we therefore apply a maximum redshift cut on the galaxy sample. The power of Google Maps comes from the ease with which the included Javascript libraries enable polygons to be drawn on the galaxy images (e.g. to trace the bars) and the polygon properties to be recorded.

We asked the observers to first identify if the SDSS photometric isophote,<sup>6</sup> shown as an ellipse plotted over the galaxy, was a good match to the galaxy shape. If not, the observer was asked to adjust the ellipse to better suit the galaxy image. The observer was then asked if a bar is apparent within the galaxy. If so, the observer marks the vertices of the bar, following a brief tutorial. An ellipse was then drawn over the bar of length defined in the previous step, and the observer was asked to adjust the width of the ellipse to best fit the thickness of the bar. Finally, we asked the observer to indicate how the spiral arms were attached to the bar using one of the criteria shown in Table 1. We show examples of the connections in Fig. 1. There are examples corresponding to the above questions and answers on a tutorial page connected to the website.

A comment form allowed any interesting observations to be retained. A flow chart of the galaxy classification scheme is shown in Fig. 2 and a screen shot of the bar drawing website in Fig. 3.

Once a galaxy had been classified, a counter associated to it was incremented. The next galaxy to be classified was randomly chosen from galaxies with the lowest number of previous classifications.

In Fig 4, we show an example galaxy in the Google Maps interface, before and after the bars have been drawn. This galaxy has been identified as having a bar each of the five times it was classified, and each bar has been drawn independently, without knowledge of the bar drawings of other observers.

## 2.1 User statistics

In Fig. 5, we show the number of classifications per week during the period we collected data and the total number of classifications per person, ranked by classifications. The peaks in the time series correspond partially to advertisements on the Galaxy Zoo blog<sup>7</sup> and forum.<sup>8</sup>

The Google Maps powered website was in operation from 2009 September 23 to 2010 January 26, and recorded a total of 45 167 unique classifications, of which 16 551 corresponded to bar drawings. Each galaxy was classified a minimum of five times, with 24.5 per cent were classified six or more times.

We note that 50.4 per cent of the votes were cast by two observers (Graham Dungworth and Elizabeth Siegel) and 78.0 per cent of the classifications were performed by seven observers (oswego9050, Gravitroid, Elisabeth Baeten, Graham Dungworth, Caro, Elizabeth Siegel and Lily Lau WW). Without the dedication of these observers, and the 242 other observers (named in Section 5), this project would not have been possible.

## 3 DATA

All the galaxies are drawn from the  $\pi$  radians of the northern sky imaged by the SDSS (see York et al. 2000; Smith et al. 2002; Gunn et al. 2006; Abazajian et al. 2009, and references therein, who derived photometric properties of  $10^8$  galaxies, created colour composite images, and took  $10^6$  galaxy spectra). Subsequently, GZ2 asked observers, who had visited a classification tutorial, for detailed classifications of 250 000 SDSS galaxies, including the presence (or not) of a galactic bar. For a complete overview of the GZ2 classification scheme, see Masters et al. (2011).

### 3.1 Input galaxies

The bar and control samples used in this paper were drawn from the 2009 July interim results of GZ2 classifications, which contained galaxies with more than 10 GZ2 classifications at that time (see Masters et al. 2011, for a discussion of possible biases this cut introduces, which appear negligible). GZ2 galaxies were selected from SDSS using the following cuts on Petrosian magnitude ( $\leq 17$ ), Petrosian radius ( $\geq 3$  arcsec) and redshift ( $0.005 < z < 0.25$ ). Due to image resolution restrictions, and the limited SDSS area available in Google Maps (mentioned in Section 2), we apply a redshift cut of  $z < 0.06$  to all galaxies in the following samples, and remove galaxies in the SDSS co-added southern stripes.

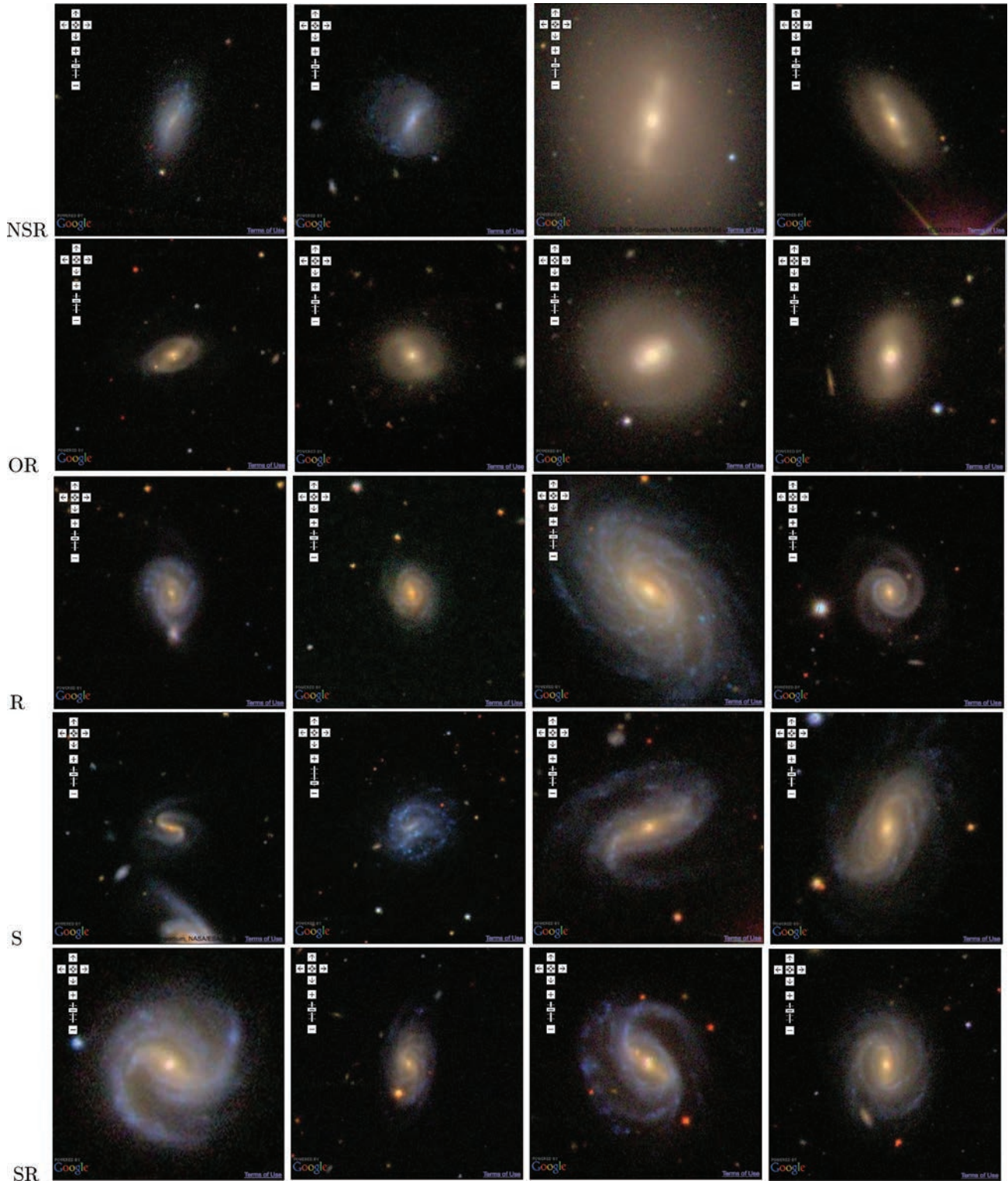
We then select 5373 galaxies which had been marked as containing a bar by at least 80 per cent of GZ2 observers who looked at them, hereafter the Control Bar Sample (CBS) galaxies. We include a control sample of 1000 randomly selected disc galaxies which have been marked as containing a bar by  $\leq 5$  per cent of observers, (the Control Non-Bar Sample galaxies), and 1000 randomly selected galaxies from the full GZ2 sample with no constraint on bar probability (Random Sample I galaxies). We additionally included 1000 randomly selected ‘edge-on’ galaxies, identified by more than 99 per cent of GZ2 observers as being an edge on galaxy (Random Sample II galaxies). The total number of galaxies in the input sample, after chance duplicates were removed, was 8180. We define

<sup>5</sup> <http://cas.sdss.org/dr7/en/tools/chart/navi.asp>

<sup>6</sup> [http://www.sdss.org/dr7/algorithms/classify.html#photo\\_iso](http://www.sdss.org/dr7/algorithms/classify.html#photo_iso)

<sup>7</sup> <http://blogs.zooniverse.org/galaxyzoo/>

<sup>8</sup> <http://www.galaxyzooforum.org/>

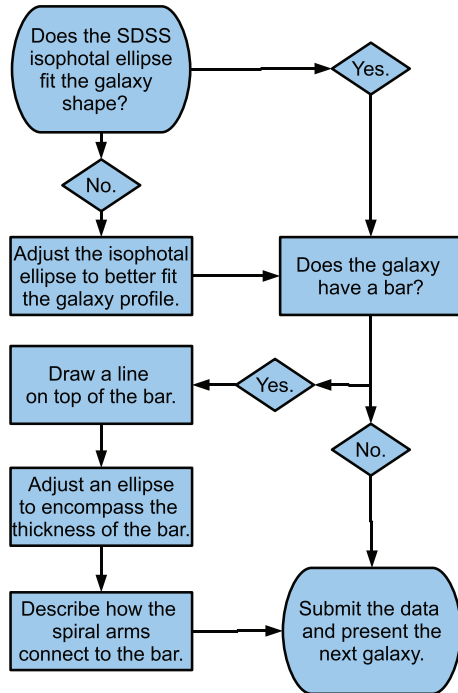


**Figure 1.** Examples of the different spiral arms – bar connection with acronyms from Table 1 for GZ2 galaxies presented in the website’s Google Maps interface. Row 1: no spiral arms or ring present (NSR); row 2: no spiral arms present, ring present (OR); row 3: spiral arms connected to the ring (R); row 4: spiral arms connected to the bar (S); row 5: a mixture of bar and ring connection (SR). The galaxies were chosen to have  $R_{\text{Petro}90} > 15$  arcsec for viewing considerations.

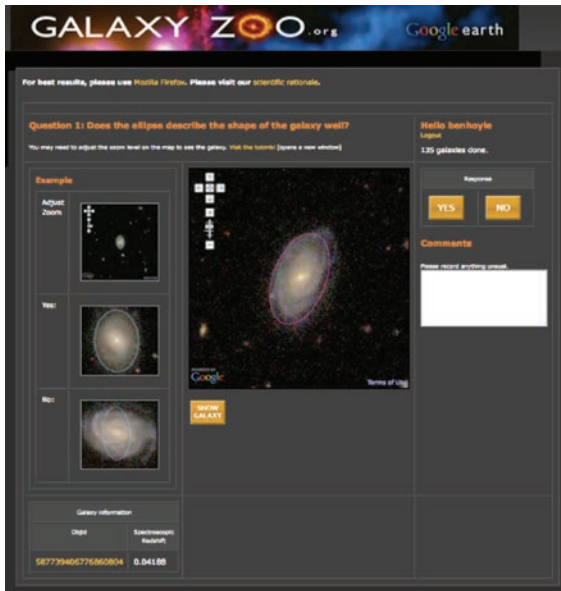
‘bar length’ as the longest distance along the bar, i.e. from drawn vertex to drawn vertex, and was then used to fix the major axis of an ellipse. The ‘bar width’ is defined as the minor axis of the ellipse, as adjusted by the GZ2 observer to best fit the bar.

### 3.2 Reliability of measurements

The random sampling of galaxies means some observers were presented with the same galaxy and therefore measured the same bar



**Figure 2.** Flow chart of bar drawing website to identify barred galaxies and describe the bar properties.



**Figure 3.** A screen shot of the bar drawing website.

multiple times, allowing us to check both user consistency and inter user consistency. We define here the unitless Bar length scatter,  $\Delta L$ , to be the bar length of all measurements per galaxy,  $L$ , minus the average bar length,  $\langle L \rangle$ , divided by the average bar length, e.g.  $\Delta L = (L - \langle L \rangle) / \langle L \rangle$ . This, and the bar length measurements, enable the following statistics to be constructed.

- (i) The bar length for each galaxy per unique observer, averaged over multiple measurements (if present),  $L^u$ .
- (ii) The average bar length for each galaxy, averaged over all observers and measurements, defined here as  $L$  and used throughout the paper as simply ‘bar length’.

- (iii) The standard deviation of the bar length scatter of each galaxy per unique observer, averaged over measurements.
- (iv) The standard deviation of the bar length scatter per galaxy  $g$ , averaged over all length measurements of all observers,  $\sigma(\Delta L_g)$ .
- (v) The average bar length scatter per observer  $u$ , averaged over galaxies they looked at and measurements they made,  $\langle \Delta L^u \rangle$ .
- (vi) The standard deviation of the bar length scatter per observer, average over all length measurements and galaxies,  $\sigma(\Delta L^u)$ .

Corresponding bar width statistics were also built.

In Table 2, we present statistics for those observers who multiple measured bar lengths on some galaxies. We show a observer identifier, the number of galaxies the observer had drawn upon more than once, the bar length scatter averaged over all such galaxies  $\langle \Delta L^u \rangle$  and the average standard deviation of the bar length scatter averaged over all such galaxies,  $\sigma(\Delta L^u)$ . The averaged results of Table 2 imply that observers are able to reproduce their own bar length measurements to  $0.5 \pm 5.9$  per cent, i.e. there is little bias and a scatter of  $\sim 6$  per cent.

We next identify how well the observers can reproduce each others’ (average) bar length measurements. In Fig. 6, we show the standard deviation of the bar length scatter per galaxy  $\sigma(\Delta L_g)$  as a function of bar length, and see that observers are able to reproduce each others’ average bar lengths, for each galaxy to  $12 \pm 17$  per cent, and we find a slight improvement in agreement as a function of increasing bar length. For the two observers with the highest number of classifications, we find they reproduce each others’ results to  $10 \pm 14$  per cent.

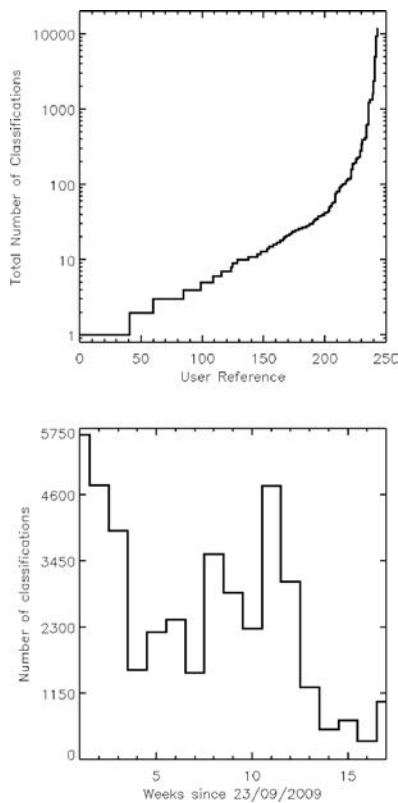
Of the 5373 CBS galaxies, 4911 were identified as containing a bar by at least one observer. Of the Control Non-Bar Sample galaxies, 284 are marked as containing a bar. From the remaining 2000 Random Samples I and II galaxies, 169 are stated by at least one observer as having a bar. We expect some of the randomly selected galaxies to contain a bar, because the random sample was drawn from all the GZ2 galaxies, independently of the number of bar identifications. After visual inspection of a sample of the galaxies with bar measurements, we notice that occasionally bars have been drawn accidentally, far away from the galaxy. To account for these spurious/accidental drawings and to build reliable statistics, we insist that at least three bar measurements per galaxy have been made. The recovered CBS galaxies now drops to 3195, and the number of bar detections from the Random Samples I and II galaxies drops to just 14 (with only one from the Random Sample II galaxies) and the number of Control Non-Bar Sample galaxies marked as containing a bar, i.e. ‘false detections’ drops to 22.

We have visually inspected the false detections, and they do appear to contain a weak bar in the Google Maps and the SDSS Navigate interface. We have additionally examined the unrecovered barred galaxies, in the Google Maps and SDSS Navigate interfaces, and the presence of a bar is indeed difficult to determine in the Google Maps sky interface and possibly dubious. We use the percentage of false detections (2.2 per cent) from the Control Non-Bar Sample galaxies to highlight the reliability of GZ2 observers to identify a barred galaxy relative to the GZ barred galaxy sample. In the following analysis, we only use galaxies with  $\geq 3$  bar identifications.

In the panels of Fig. 7, we examine if there is a redshift or magnitude bias in the observers ability to correctly identify a barred galaxy from the CBS galaxies. In both upper panels, we show the redshift and absolute  $r$ -band magnitude distributions of the full 8180 input sample, the recovered CBS galaxies and the unrecovered Control Bar Sample galaxies; in the lower panels we show the ratio



**Figure 4.** An example barred galaxy as viewed in the Google Maps interface. The left (right) image shows the galaxy before (after) the independent bar drawings by five observers.

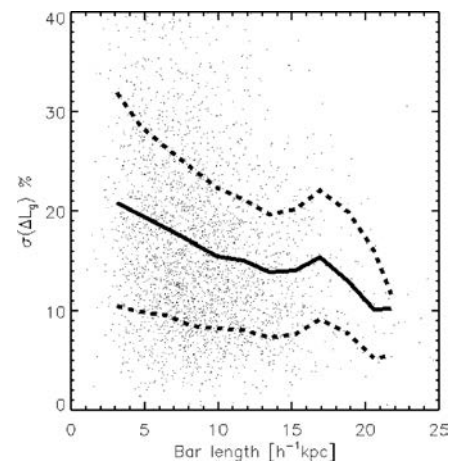


**Figure 5.** Histograms showing the number of classifications per individual observer (marked by an arbitrary ‘user reference’), ranked by number of classifications (upper panel), and the number of classifications performed each week since the launch of the site (lower panel).

between the unrecovered and recovered CBS galaxy samples. We see that at low redshift  $z < 0.02$ , the ratio of the unrecovered to recovered CBS galaxies is 0.4, i.e. there are two times as many barred galaxies which have been correctly identified by at least three observers, as there are incorrectly identified barred galaxies. The ratio increases to 0.8 above  $z > 0.04$ , which means the number of recovered barred galaxies is still greater than the number of unrecovered bar galaxies. This bias can be understood because lower redshift galaxies have larger angular sizes, and therefore it is easier to identify their substructure, such as bars. Examining the ratio on

**Table 2.** The intra-observer consistency of bar length measurements for the same galaxy. Columns show an observer identifier (as the top panel of Fig. 5), the number of galaxies that the observer has drawn bars upon more than once, the average bar length scatter per galaxy, averaged over all galaxies for each observer, and the standard deviation of the bar length scatter per observer.

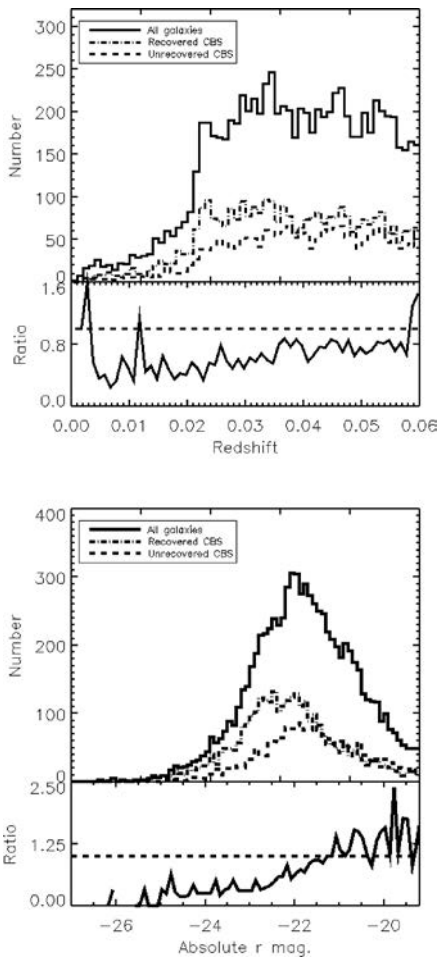
User ID	$N_{\text{gal}}$	$\langle \Delta L^u \rangle$ per cent	$\sigma(\Delta L^u)$ per cent
242	691	-3.5	6.3
243	580	3.10	6.2
241	392	-9.7	6.2
240	135	4.7	6.1
238	32	1.3	5.5
236	25	1.0	6.2
237	23	-2.6	5.3
235	6	2.5	5.6
230	4	-2.1	6.1



**Figure 6.** The standard deviation of bar length scatter for each galaxy as a function of bar length. We plot the average value in the bin by the solid line and use the dashed lines to describe the 66 per cent spread of the data.

the lower panel, we see that the brightest galaxies ( $M_r < -24$ ) which have bars are more easily identified than the fainter galaxies ( $M_r > -22$ ).

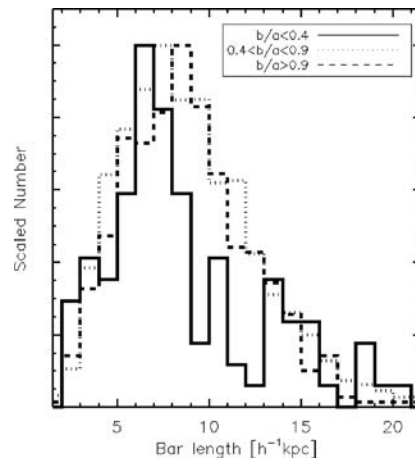
Finally, we cut on absolute magnitude ( $M_r < -19.38$ ) to make a volume-limited sample, and for plotting considerations, we remove



**Figure 7.** We show the redshift (upper figures) and absolute  $r$ -band magnitude (lower figures) distributions of the populations of all 8180 inputted galaxies (solid line), the CBS which were recovered by at least three observers (dot-dashed line) and the CBS which were not recovered by at least three observers (dashed line). The upper panel shows the distributions and the lower shows the ratio of the unrecovered to the recovered CBS, and the dashed line shows  $y = 1$ .

four galaxies which have a  $(g - r)$  colour  $> 2$ . The final barred galaxy sample consists of 3150 galaxies of which 99.1 per cent have been visually classified as spiral galaxies and the remainder as early-type galaxies by the original Galaxy Zoo classifications (Lintott et al. 2008).

We explored the effect of galaxy inclination on the measured bar length. As a proxy for the inclination, we used the axial ratio of the SDSS measured isophotal ellipse axes,  $(b/a)$ , and split the sample into three groups: galaxies which are highly inclined,  $b/a < 0.4$ ; slightly inclined,  $0.4 < b/a < 0.9$ ; and face-on,  $b/a > 0.9$ . In Fig. 8 we show the distributions scaled by number, as a function of redshift. We find that, as expected for randomly orientated galaxies, the majority (2520) of galaxies are slightly inclined. We also find that the number of highly inclined (as approximated by axial ratio) galaxies is small (102) and the number of face-on galaxies is 528. Comparing the scaled distributions across all bar lengths, we find that the slightly inclined galaxies and face-on galaxies are very similar, but the highly inclined galaxies are associated with shorter bars perhaps because of projection effects.



**Figure 8.** The effect of galaxy axial ratio  $b/a$  (as a proxy for galaxy inclination) on bar length.

## 4 CORRELATING BAR, DISC, BULGE AND GALAXY PROPERTIES

In this section, we describe properties measured from knowledge of the bar lengths, and present correlations between bar and galaxy properties.

### 4.1 Deriving bar and disc properties

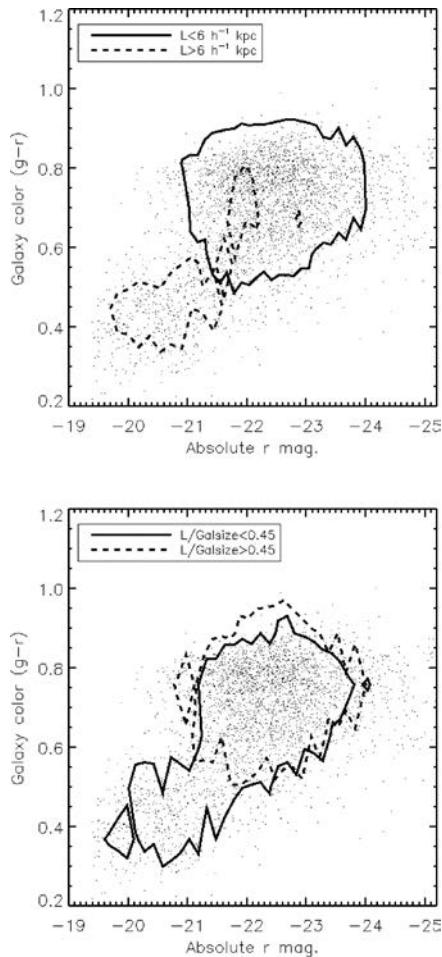
The observers drew lines on the galaxy images measuring the bar lengths, and we recorded the line vertices from each measurement. These were used to calculate the mean bar length and the mean distance between each bar vertex and the centre of the galaxy. This allows an approximate measurement of the  $g - r$  ‘bar’ colour which we define to be within the aperture from the centre of the galaxy to the edge of the bar  $0 < R < R_{\text{bar}}$ , and the ‘disc’ colour, which we measure from the edge of the bar to the edge of the galaxy  $R_{\text{bar}} < R < 2R_{\text{Petro90}}$ . We define the edge of the galaxy (or ‘galaxy size’) to be two times the  $r$ -band Petrosian radius 90 (Petrosian 1976) as measured by the SDSS (York et al. 2000). To measure colours, we determine the average  $g$ - and  $r$ -band flux of each galaxy, in each aperture, using the SDSS PhotoProfile and ProfileDefs tables and convert fluxes to magnitudes using  $m = -2.5 \log_{10} f$  (Pogson 1856). We note that colours measured in circular apertures are approximations of the bar and galaxy colours, but to first order we expect them to be representative. We define galaxy colour as the difference between the SDSS  $g$  and  $r$  extinction-corrected model magnitudes, and apply extinction corrections to the derived bar and disc colours (Schlegel, Finkbeiner & Davis 1998). We also define a ‘scaled bar length’ to be the ratio of bar length to galaxy size.

Almost all 3150 bars are significantly larger than the typical SDSS seeing of  $< 2.5$  arcsec (Smith et al. 2002), only 28 are close to this value ( $< 5$ ) arcsec. If the bars were of a comparable size to the seeing, they may become smeared and be undetectable. The smallest bars in our samples are  $\sim 2 h^{-1}$  kpc.

### 4.2 Bar length and colour

In Fig. 9, we show the relationship between absolute  $r$ -band magnitude and galaxy colour  $(g - r)$ , and in the top panel, we overplot isocontours of galaxy density with bar lengths greater than  $6 h^{-1}$  kpc with the solid line, and less than  $6 h^{-1}$  kpc using the dotted line. We find a clear segregation in the disc galaxy populations by colour



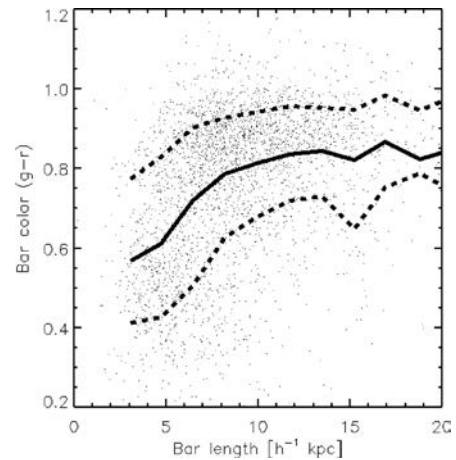


**Figure 9.** The barred galaxy colour–magnitude relation split by bar length. The top panel represents isocontours of galaxies with bars lengths  $>6 h^{-1}$  kpc by the solid line, and bar lengths  $<6 h^{-1}$  kpc by the dotted line. The bottom panel is the same as above, but shows isocontours of fractional bar length (bar length divided by galaxy size, see text)  $<0.45$  by the solid line and  $>0.45$  by the dotted line.

and magnitude (or bar length) similar to the well-known colour–magnitude diagram for early- and late-type galaxy populations (see e.g. Baldry et al. 2004). These disc galaxy subpopulations, split by colour, have been seen before (e.g. see Cameron et al. 2010; Nair & Abraham 2010; Masters et al. 2011), but this is the first time it has been shown as function of bar length. The bottom panel is the same as the top, but shows isocontours of fractional bar length (bar length divided by two times the  $r$ -band Petrosian radius  $90$  as a measure of galaxy size)  $<0.45$  by the solid line and  $>0.45$  by the dotted line.

In Fig. 10 we show the bar length against bar colour (recall, this is defined as the average colour of the galaxy interior to the bar radius) and plot the average value in the bin by the solid line and use the dashed lines to describe the 66 per cent spread of the data. We find that bars which are short in absolute length  $L < 6 h^{-1}$  kpc (and also in scaled bar length,  $L/2 R_{\text{Petro}90} < 0.3$ ) are bluer than longer bars. As the bar length increases, the bar colour becomes redder until  $L \sim 10 h^{-1}$  kpc (or  $L/2 R_{\text{Petro}90} \sim 0.5$ ), at which length the colours become constant.

One may worry that this correlation could be a systematic bias, in that longer bars are predominantly found in redder early-type disc galaxies because star formation has obscured some of the bar in bluer late-type disc galaxies. However, this would be contrary



**Figure 10.** The effect of bar length on bar colour. We find shorter bars are bluer than longer bars, and bar colour increases with redness, until a critical length (or colour), after which the change in colour is reduced.

to the work of Sheth et al. (2008) who find that the barred fraction of a sample of low-redshift galaxies is constant across the SDSS  $g$ ,  $r$ ,  $i$ ,  $z$  bands. Additionally, Erwin (2005) compiled a collection of 135 barred galaxies with optical and near-infrared imaging, which is less sensitive to obscuration by star formation, and found that the average bar length in early-type disc galaxies is 2.5 times that of late-type disc galaxies. Therefore, we argue this correlation is physical, in agreement with Erwin (2005), and not due to a systematic bias.

### 4.3 Galaxy colour and bar colour

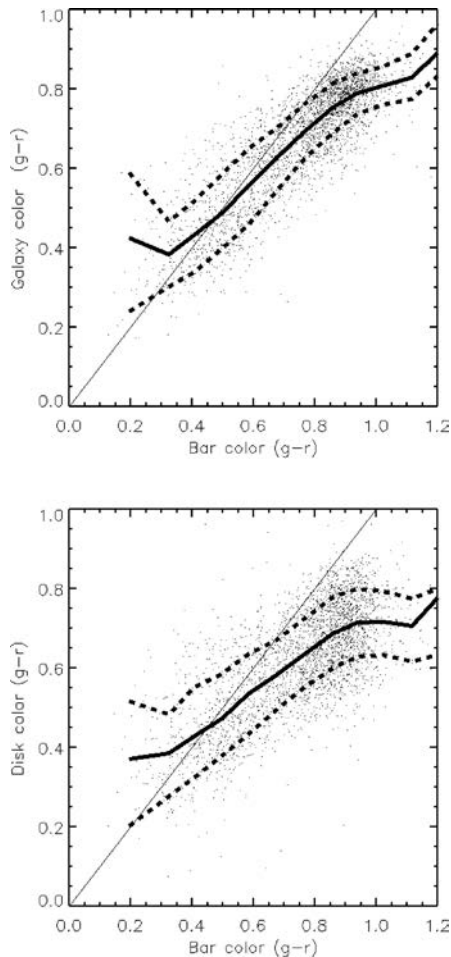
In Fig. 11 (upper panel), we show the colour of the bar and the galaxy colour (as measured by the SDSS), and find that, as one might expect, as the bar colour becomes redder, the total galaxy colour becomes redder. In Fig. 11 (lower panel), we examine the relationship between bar colour and disc colour.

We see that bar colours and discs colours are highly correlated, as expected from simulations (Scannapieco et al. 2010). Interestingly, the bluest (therefore smallest) bars have discs which are redder than the bar colour, but for all other bar lengths, the bar colours are redder than disc colours. This can be understood if, as the bar increases in length, some process shuts off star formation in the entire galaxy from the inside out. The low scatter implies that the stellar populations of both bar and disc are drawn from similar parent populations. Further exploration of the relationship between the change in bar, disc and galaxy colour as the bar length increases will be the topic of a future publication.

### 4.4 Bulge prominence

As suggested by Masters et al. (2011), we use the SDSS measured  $r$  band  $\text{fracdeV}$  as a proxy for bulge size and show  $\text{fracdeV}$  as a function of bar length, divided by galaxy size, in Fig. 12.

As the bulge increases in size, the scaled bar length (bar length divided by galaxy size) also increases, albeit with a large scatter. Fitting a line to these points we find a correlation with a slope  $0.12 \pm 0.05$ , i.e. the bar reaches 12 per cent further into the disc in galaxies with a large bulge compared to galaxies without a central bulge. This observational relationship is not new, and is expected from simulations (e.g. Athanassoula & Martinet 1980; Gadotti 2010; Athanassoula 2003), but we test it here with a large galaxy sample. We note that, in absolute bar length ( $h^{-1}$  kpc), galaxies with



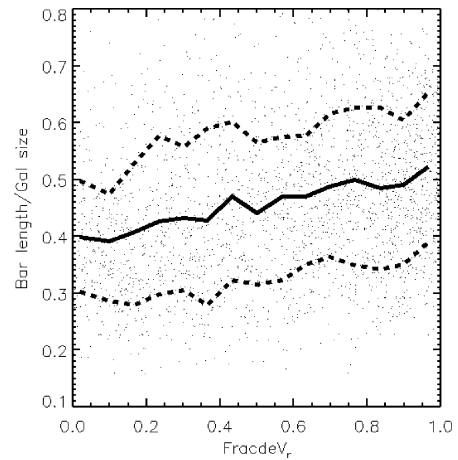
**Figure 11.** We show the bar colour against galaxy colour (disc colour) in upper (lower) figure, and also plot lines of equality. Both the total galaxy colour and disc colour become redder as the bar colour becomes redder.

$\text{fracdeV} = 1$  have, on average, bars which are  $2 \pm 1.5$  times as long as galaxies with  $\text{fracdeV} = 0$ . This may point to a systematic error as longer bars may influence the SDSS  $\text{fracdeV}$  fits, however Masters et al. (2011) showed little impact of bars on  $\text{fracdeV}$  distributions.

#### 4.5 Spiral arm connection to bar

We next divide the galaxies into subsamples of the different possible connections between the spiral arms and ring (if they exist) and the bar, by using the results of the final question on the classification site. In Fig. 1, we showed a random selection of four galaxies per classification criteria as seen in the Google Maps interface with rows describing, from top to bottom, NSR (spiral arms and ring are not present), OR (spiral arms are not present and the bar is connected to the ring), R (spiral arms are connected to the ring around the bar), S (spiral arms are connected to the end of the bar) and SR (spiral arms are connected to a mixture of a ring and the bar).

The connection measurement is difficult to perform, being potentially subjective, and is further confounded by the limited resolution of the galaxy images in the Google Maps interface (see Section 2). We tackle these issues by continuing along two parallel threads. In the first (our ‘clean sample’), we only consider galaxies where different observer classifications agree to a high significance, this



**Figure 12.** The  $\text{fracdeV}$  (or prominence of a the central galactic bulge) plotted against bar length/galaxy size. As  $\text{fracdeV}$  increases the bars become longer.

cuts the sample size from 3150 to 771. We later use the full sample and weight the number of classification per category per galaxy by the total number of classifications per galaxy. This allows each classification for each galaxy to be used statistically. In what follows, we compare bar lengths, widths (or strengths) with bar and galaxy properties for each of the connections outlined in Table 1.

#### 4.5.1 Clean sample

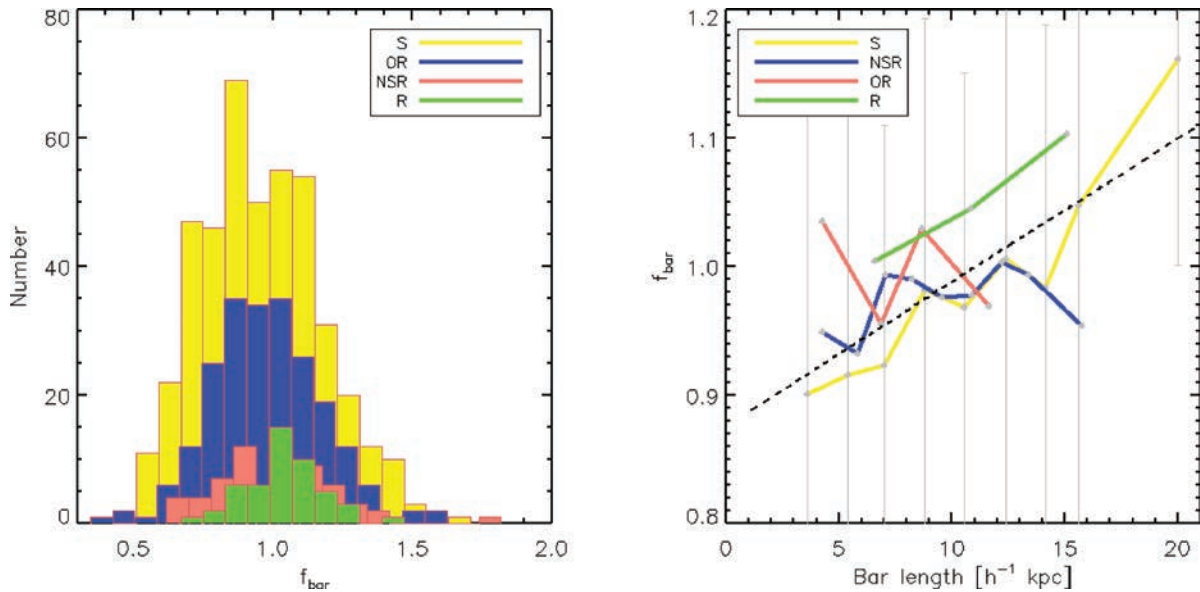
We collate votes for each of the six possible outcomes (as described in Table 1) with the constraint that the inter-observer agreement must be 100 per cent for galaxies with three bar measurements, and 80 per cent for galaxies with greater than three bar measurements. This cleaning reduces the number in the sample to 771, which are distributed per category as shown in Table 3. We also show the fractional dispersion for bar length measurements per galaxy, averaged over all galaxies, and the standard deviation of the fractional dispersion per galaxy. We note that the standard deviations of the bar length measurements are similar in each connection category ( $\sim 17$  per cent) and unbiased.

First, we note that the connection with the bar connecting directly to the spiral arms (denoted by S) is the most common (in 56.1 per cent of these galaxies). This result has been seen previously by earlier observations of 147 galaxies (Buta et al. 2005). We extend this earlier work by using five times more barred galaxies.

In Fig. 13, we show how the distribution of bar ellipticities  $f_{\text{bar}}$  (left-hand panel) and the correlations between  $f_{\text{bar}}$  and bar length (right-hand panel) change with how the spiral arms (if they exist)

**Table 3.** The bar, ring and spiral arm connection categories for the cleaned sample of galaxies with high classification agreement. We show the number of galaxies in the sample  $N_{\text{gal}}$ , and the average and standard deviation of the fractional bar length scatter measurement.

Connection	$N_{\text{gal}}$	$\langle \Delta L_g \rangle$ per cent	$\sigma(\Delta L_g)$ per cent
S (spiral to bar)	433	-0.5	17.6
OR (only ring)	219	1.0	16.7
NSR (no spiral or ring)	61	-2.3	11.1
R (sprial to ring to bar)	49	0.7	11.8
SR (mixture of R)	9	8.8	27.5



**Figure 13.** We show the distributions of bar ellipticities  $f_{\text{bar}}$  (left-hand panel) and the correlation between  $f_{\text{bar}}$  and bar length (right-hand panel) for subsamples of galaxies split by how the spiral arms (if they exist) are connected to the ring (if it exists) and the galaxy bar. In the right-hand panel, the error bars show the standard deviation of the binned data for the connection types S, and the dashed line is the line of best fit to all the bar-spiral arm configurations.

are connected to the end of the bars or ring. We only show galaxy subsamples with more than 10 galaxies (i.e. exclude the SR subsample), and the error bars show the standard deviation of the binned data for the connection types S. To calculate the bar strength  $f_{\text{bar}}$ , we follow Whyte et al. (2002) and define

$$f_{\text{bar}} = \frac{2}{\pi} \left( \arctan[(b/a)_{\text{bar}}]^{-0.5} - \arctan[(b/a)_{\text{bar}}]^{+0.5} \right),$$

where  $(b/a)_{\text{bar}}$  is the ratio of the bar width and bar length.  $f_{\text{bar}}$  has been shown to be a proxy for bar strength (Laurikainen et al. 2007). In the right-hand panel of Fig. 13, we show the correlation between bar strength  $f_{\text{bar}}$  and length  $L$  for different connections. The standard deviation of the S connection is shown using the grey error bars; we overplot the line of best fit for the combined samples, which is given by  $f_{\text{bar}} = 0.88 + 0.01L$  with a (un)reduced chi-squared of (32.30)/0.04.

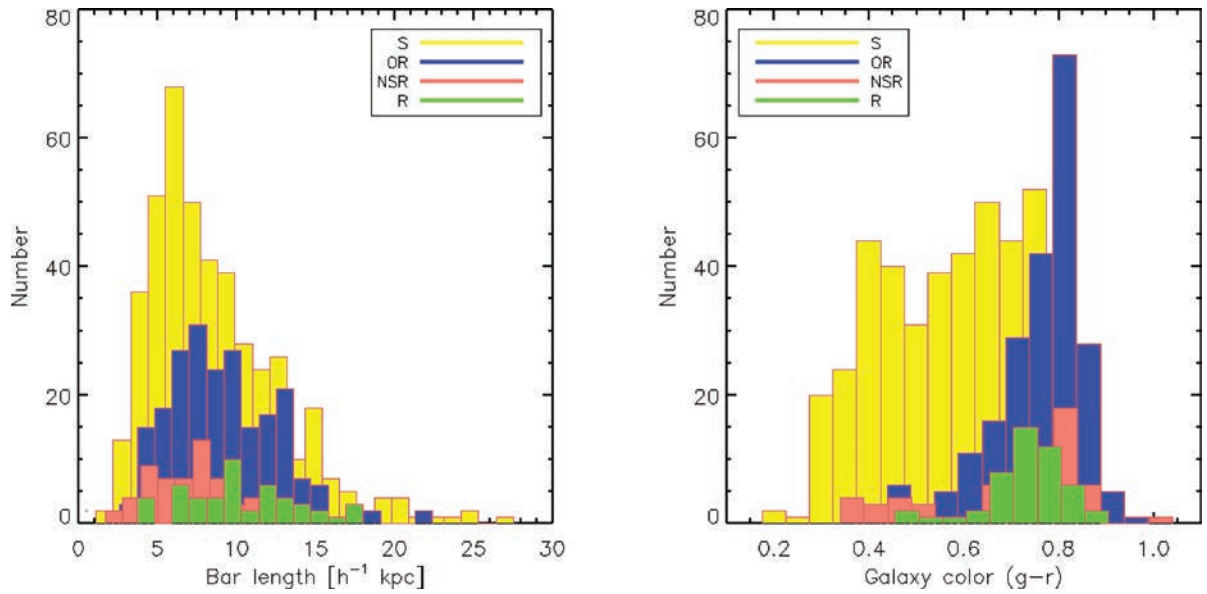
We find that the  $f_{\text{bar}}$  medians of the S ( $0.74 \pm 0.21$  with  $1\sigma$  standard deviation) and OR ( $0.77 \pm 0.20$ ) samples to be smaller than those of NSR ( $1.17 \pm 0.21$ ) and R ( $1.14 \pm 0.14$ ). This implies that in configurations where the bar is connected directly to the spiral arms, or where there are no spiral arms and the bar is connect to a ring, the bars are less elliptical (or are weaker) than those configurations where there are no spiral arms or rings, or the bar is connect to the ring and the ring is connected to the spiral arms. In the left-hand panel of Fig. 13, we see that the bar strength increases for all bar-spiral arm configurations as a function of increase bar length, but that there is a large dispersion. We note that the R connection has typically larger values of  $f_{\text{bar}}$  (i.e. are stronger) than the other configurations, which is in agreement simulations with Kormendy & Kennicutt (2004) and Sanders & Tubbs (1980), but in contrast with Buta et al. (2005) who find that galaxies with strong bars are more likely to have spiral arms, and that weaker bars are more likely to be ringed, when compared with the global average.

We remind the reader that our barred galaxy sample in this section has been heavily cut to include only galaxies whose connection classification agreement is very high, but still contains five times more galaxies than any previous study.

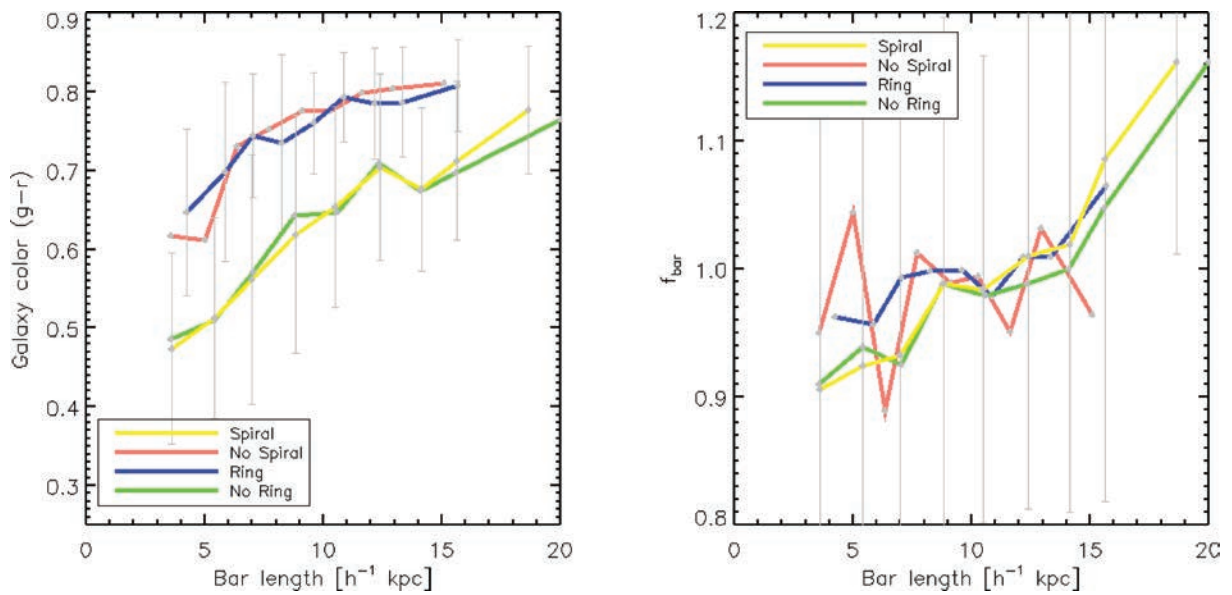
In Fig. 14, we further explore the above results, by presenting histogram distributions showing how the subsample populations are distributed in bar length and galaxy colour. In the left-hand panel, we find that the distribution of bar lengths is similar, from small to intermediate bar lengths ( $< 15 h^{-1} \text{ kpc}$ ), but the S connection can host longer bars than the other connections (which may be due to the larger sample size). The median bar lengths (and  $1\sigma$  standard deviation) of the different connections are given by S:  $7.44 \pm 4.19 h^{-1} \text{ kpc}$ , OR:  $8.81 \pm 3.48 h^{-1} \text{ kpc}$ , NSR:  $7.26 \pm 2.72 h^{-1} \text{ kpc}$  and R:  $9.94 \pm 3.61 h^{-1} \text{ kpc}$ .

We note that the NSR (no spiral arms or ring are present) galaxies host bars which are typically the shortest (although the dispersion is moderate) and that the number of longer bars drops quickly, and there are no bars greater than  $15 h^{-1} \text{ kpc}$ . The colour histogram in the right-hand panel of Fig. 14 shows the clear excess of blue S galaxies. We also find that all the other connection subsamples have similar distributions, showing little differences in the bar length and galaxy colour distributions, but we note (in passing) that all subsamples follow the same global trend, i.e. smaller bars are hosted in bluer galaxies, and galaxies become redder with increasing bar length (as per Fig. 10 and the left-hand panel in Fig. 15).

We also group the galaxies into four combined categories: those with and without spiral arms (S and R and SR connections, totalling 491 galaxies, and OR and NSR, totalling 280 galaxies) and those with and without a ring (R and OR and SR, totalling 277 galaxies, and S and NSR, totalling 494 galaxies). In Fig. 15, we show galaxy colour against bar length, and  $f_{\text{bar}}$  (as a measure of bar strength) against bar length. In the right-hand panel of Fig. 15, we see that galaxies which host spiral arms or fail to host a ring are bluer than those galaxies which host a ring or fail to host spiral arms. The same increasing bar length with increasing redness trends are seen in all the samples, as before. In the left-hand panel of Fig. 15, we see that bar length and  $f_{\text{bar}}$  are independent of the presence or lack, thereof, of spiral arms and rings with these groupings of data suggesting that the stronger bars seen in the R connection require a ring only (and no spiral arms).



**Figure 14.** We show distributions of bar length (left-hand panel) and galaxy colour (right-hand panel) for subsamples of galaxies split by how the spiral arms (if they exist) are connected to the ring (if it exists) and the galaxy bar.



**Figure 15.** We show bar length against galaxy colour (right-hand panel) and bar strength  $f_{\text{bar}}$  (left-hand panel) for grouped samples of galaxies split by existence, or not, of spiral arms and a ring. For ease of viewing, we show the error bars for selected connection types, which represent the standard deviation of the binned data.

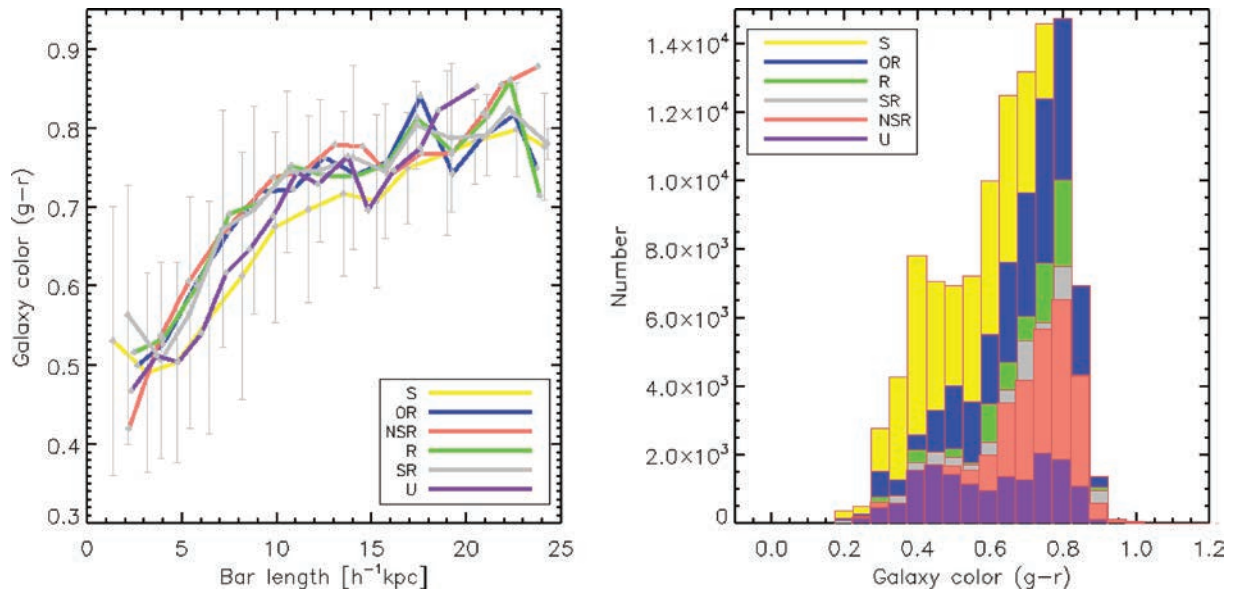
#### 4.5.2 Full sample

As an alternative to making strict cuts on the full galaxy sample to obtain galaxy subsamples, we can use all of the connection classifications for all galaxies. We do this by scaling the total number of votes per category per galaxy by the total number of classifications per galaxy. We need to do this because some galaxies have been classified more times than others (see Section 2). The total numbers of unscaled votes per category and the corresponding number of scaled votes are shown in Table 4.

First, we note that the S galaxy population still contains more galaxies than the other connections, but the significance has been reduced to 32.77 per cent of the total number of votes. We are now able to view trends of all the connection populations, and show the

**Table 4.** The total number of bar and spiral arm connection classifications for all galaxies, and the scaled number of classifications, which allows galaxies with different number of classifications to be equally compared.

Connection	Total number	Scaled number
S	4334	1032.23
OR	3294	753.70
NSR	1361	339.08
R	2208	475.17
SR	1774	390.18
U	631	159.61



**Figure 16.** We show bar properties for subsamples of galaxies split by how the spiral arms (if they exist) are connected to the ring (if it exists) and the galaxy bar. The left-hand panel shows the bar length against galaxy colour for the full subsamples; the error bars show the standard deviation of the binned data for selected connection types. The right-hand panel shows the galaxy colour distributions.

bar length and galaxy colour, and the galaxy colour distribution, in Fig. 16.

We find that the scaled subsamples are more similar to each other than the clean subsamples (in Section 4.5.1), and that using the full sample removes most of the signal, as expected because a larger number of less obviously identifiable galaxies are included. The distributions of bar lengths and galaxy colours are also similar, and extend across the full range of bar lengths, as seen in the left-hand panel of Fig. 16. In each subsample, we still see the same trend as before, that smaller bars are hosted in bluer galaxies, and bar length increases as galaxies become redder. The right-hand panel of Fig. 16 shows the distributions of galaxy colour. We still find an excess of bluer S galaxies, although it is less pronounced, and note the peak and distributions of the other subsamples are similar. The U (unsure or unable to make a classification) subsample shows a bimodal colour distribution, one peak is located in the same location as the other subsamples, but the other peak is even bluer than the S connection, but we note that the scaled number of galaxies in this sample is a factor of 10 smaller than the S subsample.

## 5 CONCLUSIONS AND DISCUSSION

We presented galaxy images selected to contain galactic bars (from Galaxy Zoo 2) to members of the Galaxy Zoo community using the Google Maps interface. The lengths and widths of 3150 galactic bars were measured three or more times per galaxy, independent of previous measurements, and information describing how the galactic bars and spiral arms are connected were collected.

We have shown that the sample of barred galaxies recovered by the GZ2 observers is unbiased, and thus our bar measurements are robust against systematic effects. We find that observers are able to reproduce their own bar length measurements to  $0.5 \pm 6$  per cent and each others' bar length measurements to  $10 \pm 14$  per cent.

We now return to the questions posed in the introduction based on simulations and other data.

(i) How do galaxy colours change as a function of bar length?

We find a split in the colour ( $g - r$ ) and absolute  $r$ -band magnitude relation of our barred galaxy sample, described by redder early-type disc galaxies and their bluer, late-type disc galaxy counterparts. Remarkably, we can reproduce these populations by cutting on galactic bar length; longer bars ( $>6 h^{-1}$  kpc) are found in early-type disc galaxies and shorter bars in late-type disc galaxies. We find the longest bars exist in the reddest disc galaxies, and that the shortest bars are found in the bluest disc galaxies. These findings are in agreement with recent bar studies of 253 galaxies in the Virgo cluster (Giordano et al. 2010), but in disagreement with simulations by Scannapieco et al. (2010).

(ii) How are the colours of galaxies, bars and discs correlated? Using the bar length measurements, we can estimate bar ( $0 < R < R_{\text{bar}}$ ) and disc ( $R_{\text{bar}} < R < 2R_{\text{Petro90}}$ ) colours, and we show that these colours are correlated, in agreement with simulations by Scannapieco et al. (2010), who find correlated bar and disc colours in a sample of eight galaxies.

(iii) Are other galaxy properties affected by bar length? We also find that bar length is a function of galactic bulge size, in agreement with previous observational studies using 32 galaxies (Athanasoula & Martinet 1980) and more recently with 300 galaxies (Gadotti 2010), and early simulations (Athanasoula 2003), which suggest that bars become longer as they slow down and exchange angular momentum with the galactic bulge. We are able to expand, and further test this work, with measurements of 3150 barred galaxies, and find that bar length divided by galaxy size increases linearly with bulge prominence with a gradient of  $0.12 \pm 0.05$ , i.e. the bar extends 12 per cent further into the disc in galaxies with a large bulge, compared to those without a central bulge. We do however find a large scatter in the bulge to bar relation (see Fig. 12).

(iv) Is bar strength or length correlated with the presence of a ring?

To examine this, we first build subsamples of galaxies split by the question: 'how do the spiral arms (if they exist) connect to the ring (if it exists) and bar?'. We only include galaxies whose classifications agree to high accuracy ( $>80$  per cent). We then combine the subsamples in those galaxies which do (not) host spiral arms

and those galaxies which do (not) host a ring. We compare with observations of 147 galaxies (Buta et al. 2005), which suggest that galaxies with stronger bars have spiral arms and that weaker bars are more likely to be ringed, when compared with the global average, and simulations (Kormendy & Kennicutt 2004; Sanders & Tubbs 1980), which find the contrary. We use  $f_{\text{bar}}$  (Whyte et al. 2002) as a proxy for bar strength (Laurikainen et al. 2007) and find that our samples agree with the simulations using a cleaned data sample of 771 galaxies, and on the full sample (see the text below). However, stronger bars are observed in galaxies which host a ring only if there are no spiral arms present.

(v) How is the bar-to-spiral arm connection different in galaxies with longer bars?

By selecting galaxies whose bars are directly connected to the spiral arms (connection S), we identify a sample of galaxies which are bluer than the other subsamples. This means that galaxies which host a ring or fail to host spiral arms are typically redder than those which only host spiral arms. In each of the subsamples, we continue to identify shorter bars in bluer ( $g - r$ ) galaxies, and see that bar length increases as galaxy becomes redder. We re-examine these trends by scaling the number of classifications per category per galaxy by the total number of classifications per galaxy. This allows the full 3150 barred galaxy sample to be used statistically. We find the same trends as before, but at a lower significance.

Furthermore we find that in 56 per cent (36 per cent) of barred galaxies in the cleaned galaxy sample (in the full sample), the spiral arms are directly attached to the end of the bar. The preference for this configuration has been predicted from simulations (Athanasoula et al. 2009a), and confirmed by earlier observations of 147 galaxies (Buta et al. 2005).

We have demonstrated above, how the properties of simulated barred disc galaxies agree extremely well with observed galaxies in general. There are just a small number of ways in which current simulations do not match our observations, for example, comparing bar length and galaxy colour (cf. simulations by Scannapieco et al. 2010).

To aid further research and collaboration between simulators and observers to examine the above discrepancies, we are making the bar length and width measurements public and can be found here: <http://icc.ub.edu/~hoyleb/> (and also at <http://data.galaxyzoo.org/>). The comma separated file contains the SDSS unique object identifier (Objid), the average bar length and width measurements, their corresponding standard deviations and the number of bar length measurements per galaxy.

## ACKNOWLEDGMENTS

The authors would like to thank an anonymous referee for comments which improve the paper. During this work, BH was partially funded by a grant from Google and grant number FP7-PEOPLE-2007-4-3-IRG n 20218, and the authors thank Google for their support of this and other Galaxy Zoo related projects. KLM acknowledges funding from the Peter and Patricia Gruber Foundation as the 2008 Peter and Patricia Gruber Foundation IAU Fellow, from a 2010 Leverhulme Trust Early Career Fellowship and from the University of Portsmouth and SEPnet ([www.sepnet.ac.uk](http://www.sepnet.ac.uk)). Support for the work of KS was provided by NASA through Einstein Postdoctoral Fellowship grant number PF9-00069 issued by the Chandra X-ray Observatory Center, which is operated by the Smithsonian Astrophysical Observatory for and on behalf of NASA under contract NAS8-03060. The development of Galaxy Zoo 2 was supported

by the Leverhulme Trust. Funding for the SDSS and SDSS-II has been provided by the Alfred P. Sloan Foundation, the Participating Institutions, the National Science Foundation, the US Department of Energy, the National Aeronautics and Space Administration, the Japanese Monbukagakusho, the Max Planck Society and the Higher Education Funding Council for England. The SDSS website is <http://www.sdss.org/>.

More specifically, this work would have been impossible without the help of the following GZ2 volunteers: Aaron Wilson, Adam Allford, Aileen Waite, Alan Eggleston, Alan L. Harris, Alberto Conti, Aldin Omanovic, Alice Sheppard, Allan Meadows, Amanda Peters, Andras Balogh, Andreas Lehnen, Andrew Crossett, Angeline Farrow, Anik Wellhausen, Arfon Smith, Augusta, BEC, BasAlbers, Brad Neuhauser, Brian Portlock, Briana Harder, Bruno Chiaranti, Bruno Domingues, Cacie Hart, Caro, Cathy Bialas, Channing Dutton, Charles Mulvey, Charlie Goodliffe, Chris Bogers, Chris H., Christopher Carrillo, Clive Higginson, Cope Middle School, Courtney Mitchell, Craig J. Miller, Craig R. Sadler, David Burt, David Cortesi, David J. Jones, Derek van Lessen, Dion Timmermann, Ed Buttery, Eduard Asensio, Edward Lilley, Eeva Saviranta, Elisabeth Baeten, Elizabeth Siegel, Elspeth Mitchell, Eric, Eric FABRIGAT, ErroneousBee, Essex Edwards, Fil, Frank Helk, Frank Helk, Gary Allen, Geoff Roynon, Gerwin Kappert, Graham Mitchell, Graham Robertson, Gravitroid, Greg Lang, HSDonnely, Hank, Hannah Hutchins, Hannah Steiner, Hanny van Arkel, HansvdM from the Netherlands, Horsetuna, I. R. van de Stadt, Ian Rogers, Ingo Peters, Janice Kay McCollough, Jaureguiberry Alain, Jennifer Broekman, Jennifer Hicks, Jim Rajabally, Jo Syan Pitkethly, John Chunko, John Venables, John Zak, Jordan Bossard, Josh5555, Julia Wilkinson, JuniorUK, KY Receveur, Keith Hughitt, Krzysztof Olejnik, L. Briggs, Lanny Ripple, Lee Reiswig, Jr, Leila Sattary, Lily Lau WW, Logan Zoel, Lukas, Mairi Yates, Marc Lluell, Marcin Janus, Mark Gill, Mark Sands, Markku Autio, Markus Pioch, Martin McCarthy, Massimo Mezzoprete, Matt, Matt Swint, Matthew Holger, Mauro Marussi, Michael ‘Amberwolf’ Elliott, Michael Josephs, Michael Josephs, Michael Wehner, Michael Willems, Michal Winiarski, Mihnea-Costin Grigore, Mike Chelen, Mike Need, Mike Tindle, Mike W. T., Monica Butcher, NGC3172, Nancy Weitz, Nanne Sierkstra, Nils Weinander, Paola Riccucci, Patrick Logiste, Patrik Alzn, Paul D. Stewart, Peter Jennings, Peter Nixon, Philip Barker, RandyC, RapidEye, Raquel Shida, Rehana Rodrigues, Ret, Richard Daniel Armour, Rick Lopez, Rinus Rekkers, Rita Tojeiro, Robert Holdsworth, Robert Hubbard, Robert Simpson, Robin O-Malley, Rune Orsval, Ruth Graham, Sam Lehman, Sean Liddelow, Sebastian Matuschka, Shawn Pyle, Soren Scott, Stefan Ziel, Stephanie Carlino, Steve Dewey, Steve Malone, Teresa Neves, Thomas Kelder, Tim Sorbera, Todd Barrow, Tomas Hult, Tomas Vorobjov, Travis Becker, Yvonne Broer-Bloemen, Biazawa, c\_cld, Carlo Artemi, Chris Randolph, Danceswithwords, Eric Jolley, Frame125, Jim Porter, Maudavejr61, Mike Russell, Pep Armengol, Robertinventor, Steven C. Haack, Tobias Collierus and 69 other volunteers.

## REFERENCES

- Abazajian K. N. et al., 2009, *ApJS*, 182, 543  
 Adelman-McCarthy J. K. et al., 2008, *ApJS*, 175, 297  
 Athanassoula E., 2003, *MNRAS*, 341, 1179  
 Athanassoula E., Martinet L., 1980, *A&A*, 87, L10  
 Athanassoula E., Romero-Gómez M., Bosma A., Masdemont J. J., 2009a, *MNRAS*, 400, 1706  
 Athanassoula E., Gadotti D. A., Carrasco L., Bosma A., de Souza R. E., Recillas E., 2009b, preprint (arXiv:0910.0768)

- Baldry I. K., Glazebrook K., Brinkmann J., Ivezić Ž., Lupton R. H., Nichol R. C., Szalay A. S., 2004, *ApJ*, 600, 681
- Buta R., Vasylyev S., Salo H., Laurikainen E., 2005, *AJ*, 130, 506
- Cameron E. et al., 2010, preprint (arXiv:1001.1736)
- Combes F., 2010, preprint (arXiv:1007.2979)
- Elmegreen B. G., Elmegreen D. M., 1985, *ApJ*, 288, 438
- Erwin P., 2005, *MNRAS*, 364, 283
- Eskridge P. B. et al., 2000, *AJ*, 119, 536
- Gadotti D. A., 2010, preprint (arXiv:1003.1719)
- Giordano L., Tran K., Moore B., Saintonge A., 2010, preprint (arXiv:1002.3167)
- Gunn J. E. et al., 2006, *AJ*, 131, 2332
- Jarrett T. H., Chester T., Cutri R., Schneider S. E., Huchra J. P., 2003, *AJ*, 125, 525
- Kormendy J., 1979, *ApJ*, 227, 714
- Kormendy J., Kennicutt R. C., Jr, 2004, *ARA&A*, 42, 603
- Laurikainen E., Salo H., Buta R., Knapen J. H., 2007, *MNRAS*, 381, 401
- Lintott C. J. et al., 2008, *MNRAS*, 389, 1179
- Lintott C. et al., 2011, *MNRAS*, 410, 166
- Marinova I. et al., 2009, *ApJ*, 698, 1639
- Masters K. L. et al., 2010a, *MNRAS*, 405, 783
- Masters K. L. et al., 2010b, *MNRAS*, 404, 792
- Masters K. L. et al., 2011, *MNRAS*, 411, 2026
- Menéndez-Delmestre K., Sheth K., Schinnerer E., Jarrett T. H., Scoville N. Z., 2007, *ApJ*, 657, 790
- Nair P. B., Abraham R. G., 2010, *ApJ*, 714, L260
- Petrosian V., 1976, *ApJ*, 209, L1
- Pogson N., 1856, *MNRAS*, 17, 12
- Sandage A., 2005, *ARA&A*, 43, 581
- Sanders R. H., Tubbs A. D., 1980, *ApJ*, 235, 803
- Scannapieco C., White S. D. M., Springel V., Tissera P. B., 2009, *MNRAS*, 396, 696
- Scannapieco C., Gadotti D. A., Jonsson P., White S. D. M., 2010, *MNRAS*, 407, L41
- Schlegel D. J., Finkbeiner D. P., Davis M., 1998, *ApJ*, 500, 525
- Sellwood J. A., 1985, *MNRAS*, 217, 127
- Sheth K. et al., 2008, *ApJ*, 675, 1141
- Smith J. A. et al., 2002, *AJ*, 123, 2121
- Whyte L. F., Abraham R. G., Merrifield M. R., Eskridge P. B., Frogel J. A., Pogge R. W., 2002, *MNRAS*, 336, 1281
- York D. G. et al., 2000, *AJ*, 120, 1579

This paper has been typeset from a  $\text{\TeX}/\text{\LaTeX}$  file prepared by the author.