



Missouri University of Science and Technology
Scholars' Mine

Physics Faculty Research & Creative Works

Physics

01 Jan 2006

Effect of Amplification on Conductance Distribution of a Disordered Waveguide

Alexey Yamilov

Missouri University of Science and Technology, yamilov@mst.edu

Hui Cao

Follow this and additional works at: https://scholarsmine.mst.edu/phys_facwork

 Part of the [Physics Commons](#)

Recommended Citation

A. Yamilov and H. Cao, "Effect of Amplification on Conductance Distribution of a Disordered Waveguide," *Physical Review E - Statistical, Nonlinear, and Soft Matter Physics*, American Physical Society (APS), Jan 2006.

The definitive version is available at <https://doi.org/10.1103/PhysRevE.74.056609>

This Article - Journal is brought to you for free and open access by Scholars' Mine. It has been accepted for inclusion in Physics Faculty Research & Creative Works by an authorized administrator of Scholars' Mine. This work is protected by U. S. Copyright Law. Unauthorized use including reproduction for redistribution requires the permission of the copyright holder. For more information, please contact scholarsmine@mst.edu.

Effect of amplification on conductance distribution of a disordered waveguide

Alexey Yamilov^{1,2,*} and Hui Cao²

¹*Department of Physics, University of Missouri–Rolla, Rolla, Missouri 65409, USA*

²*Department of Physics and Astronomy, Northwestern University, Evanston, Illinois 60208, USA*

(Received 10 May 2006; published 20 November 2006)

Introduction of optical gain in a disordered system results in enhanced fluctuations [$F_{(2)} = \text{var}(\tilde{g}) / \langle \tilde{g} \rangle^2$] of the dimensionless conductance \tilde{g} , similar to the effect of Anderson localization in a passive medium. Using numerical simulations we demonstrate that, despite such qualitative similarity, the whole distribution of the conductance of amplifying random media is drastically different from that of a passive system with the same value of $F_{(2)}$.

DOI: [10.1103/PhysRevE.74.056609](https://doi.org/10.1103/PhysRevE.74.056609)

PACS number(s): 42.25.Dd, 42.25.Bs, 42.55.Zz

INTRODUCTION

Wave transport in quasi-one-dimensional (Q1D) is a paradigm of mesoscopic physics [1]. The universality of the statistics of wave transport in Q1D geometry makes it a convenient system to study interference effects. The Anderson localization phenomenon [2] is an ultimate manifestation of the wave interference [3,4]. Light transport in a Q1D system is described by three directly measurable quantities [5]: T_{ab} , the transmission coefficient from an incoming channel a to an outgoing channel b ; $T_a = \sum_b T_{ab}$, the total transmission coefficient from channel a to all outgoing channels; $\tilde{g} = \sum_{a,b} T_{ab}$, the conductance. This is unlike electronic systems where only conductance can be accessed experimentally. In the Q1D Landauer formula [6] puts the transport of electronic [3] and electromagnetic waves [4] on the same footing. In this geometry, the average value of the conductance ($\langle \tilde{g} \rangle \equiv g \gg 1$ for diffusion; $g \ll 1$ for localization), its variance, and, more generally, its entire distribution has been found to be indicative of the nature of wave transport through a random medium [7,8]. Coherent amplification of light adds a new dimension to the study of mesoscopic transport that can lead to new phenomena such as random lasing (see Ref. [9] and references therein).

The effect of amplification leads to enhancement of non-local correlations [10] and the fluctuations of various transport coefficients [11,12] that bears similarity to that of localization. Selective amplification of quasimodes with long lifetimes increases their contribution to transport, leading to “localization by gain” [10,11,13]. In our previous work we found that $P(T_{ab})$ in an active random medium coincides [11], within numerical accuracy, with that of a passive system [14] with a reduced value of the dimensionless conductance which parametrizes the distribution. A question arises about its relevance to the actual value of the conductance and its distribution in a random medium with gain.

The scaling theory of localization [15] predicts that the distribution of dimensionless conductance \tilde{g} depends on a single parameter. The average value $\langle \tilde{g} \rangle$ is usually chosen for the parametrization [7,8]. The Q1D geometry (optical wave-

guide) is a particularly convenient system to study the localization-delocalization transition, which can be realized with variation of the length of the waveguide.

Introduction of optical gain to the system increases the average conductance of the waveguide. At the same time, it is also expected to enhance the conductance fluctuations. It has been shown that fluctuations of both T_{ab} [10] and T_a [12] grow faster than the corresponding averages. However, the effect of gain on the statistical properties of \tilde{g} is not known.

In Ref. [10] in order to obtain correlation functions that contain meaningful information about light transport in amplifying random media, we introduced the conditional average over all nonlasing realizations $\langle \cdots \rangle \rightarrow \langle \cdots \rangle_c$. Due to fluctuations of the lasing threshold such realizations always exist, however improbable. This fact makes analytical treatment of the problem difficult.

In this work, following the same approach [10,16], we obtained numerically the full distribution of conductance in passive and active disordered waveguides with time reversal symmetry [7]. We demonstrate that the (normalized) second moment $F_{(2)} \equiv \text{var}(\tilde{g}) / g^2 = (\langle \tilde{g}^2 \rangle - g^2) / g^2$ increases with gain and that the conductance distribution $P(\tilde{g})$ in an amplifying system is drastically different from the distribution of a passive system with the same second moment $F_{(2)}$.

METHOD

In our numerical simulation, we consider a 2D waveguide filled with a random medium (Fig. 1). The walls of the waveguide are metallic, and the circular scattering particles are dielectric with refractive index $n=2$. We use the finite-difference time domain method to calculate the response of our system to pulsed excitation, followed by Fourier transformation, which gives us the desired continuous-wave re-

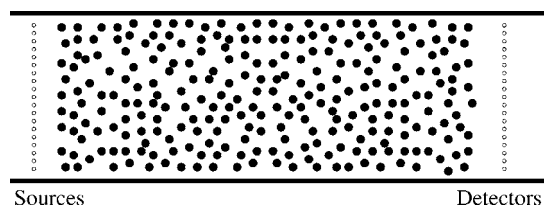


FIG. 1. Disordered waveguide geometry.

*Corresponding author. Present address: University of Missouri–Rolla, Rolla, MO 65409. Electronic address: yamilov@umr.edu

sponse [16]. We have successfully used this method to study mesoscopic fluctuations and nonlocal correlations [10,11]. The system we are considering is Q1D, and the transition from diffusion to localization can be realized by increasing the length L of the random medium. To ensure that the studied statistics is universal (does not depend on the microscopic structure of disorder; see, e.g., [17]) we operate in the regime of locally weak disorder. The effect of absorption or gain (inside the scatterers) is treated by a classical Lorentzian model with positive or negative conductivity. The advantage of our numerical model is the ability to introduce a spatially uniform gain as well as to separate coherent amplification of an input signal from spontaneous emission of the active medium. In the presence of gain, long after the short excitation pulse, the electromagnetic field decays with time in the non-lasing realizations, while it keeps increasing in the lasing ones. We excluded the lasing realizations from our statistical ensemble.

In order to calculate the dimensionless conductance \bar{g} , a short pulse was launched via a series of equidistant point sources which uniformly cover the input end of the waveguide. One calculation was performed for each source in the sequence, and the transmission coefficient was obtained in the series of detector points which uniformly cover the output end of the waveguide. The summation of \tilde{T}_{ab} over source and detector points gave us a quantity that is proportional to the dimensionless conductance $\Sigma_{a,b}\tilde{T}_{ab}=\alpha\bar{g}$. The coefficient of proportionality α is geometrical, and is constant for all realizations. It can be found as follows [18]. According to the scaling the theory of localization [15], the distribution of conductance in a passive system is uniquely determined by its average value. We use the normalization-free second moment $F_{(2)}$ of the system to find the actual value of the average conductance g . This can be done using results of Ref. [8], where g and $\text{var}(\bar{g})$ were calculated analytically. Note that once the coefficient α is found from the passive system (where $F_{(2)}$ and g are uniquely related) it can be used in amplifying or absorbing systems with the same arrangement of the source and detector points.

EFFECT OF GAIN ON CONDUCTANCE

Far into the diffusive regime $P(\bar{g})$ has a Gaussian shape with the width determined by the universal conductance fluctuations. In terms of quasimodes of a diffusive system [19], the addition of weak uniform gain to the system should result in partial compensation of the mode decay rates. Significant changes should occur when a substantial fraction of the quasimodes are brought sufficiently close to their lasing threshold. This is the regime that we would like to investigate in our Q1D system, which leads to the following choice of system parameters. We start with the passive system close to the onset of localization with $g=1.53$, as determined by the procedure outlined above. The waveguide supports $N=20$ modes.

The thick solid line in Fig. 2(a) shows the frequency dependence [20] of \bar{g} in one of the random realizations of the passive system. As one adds gain (dashed lines) or absorp-

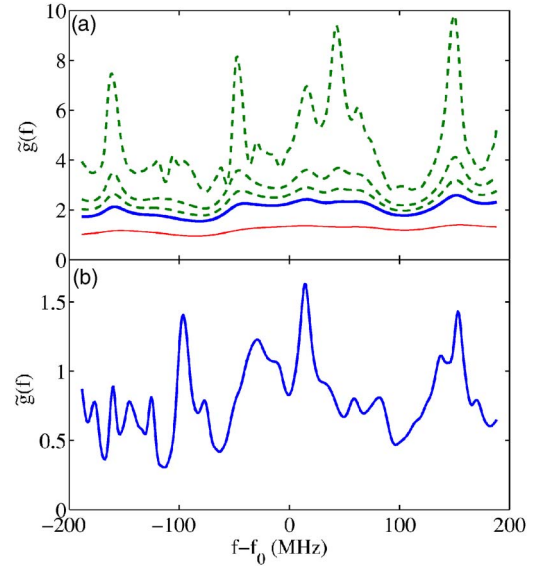


FIG. 2. (Color online) (a) Thick solid, thin solid, and dashed lines represent $\bar{g}(f)$ in passive, absorbing, and amplifying systems, respectively. Three dashed curves (from bottom to top) correspond to the gain coefficient $\sigma_g/\sigma_{g,cr}=0.11, 0.22,$ and 0.33 ($\sigma_{g,cr}$ is the critical value for the average lasing threshold [10]). The absorption coefficient for the thin solid line $\sigma_a=-0.45\sigma_{g,cr}$. (b) $\bar{g}(f)$ of a passive system with nearly the same $F_{(2)}$ as the upper dashed line of (a).

tion (thin solid line), the conductance increases or decreases, respectively. Absorption is known to reduce fluctuations of the conductance [21,22] and makes the distribution approach a Gaussian [23]. The latter fact led to a proposition for the statistical formulation of the localization criterion [22] in absorbing systems: the parameter $g'=(2/3)/\text{var}[T_a/\langle T_a \rangle]$ takes on the role of the average dimensionless conductance g as the localization parameter. It was conjectured that localization in an absorbing system should be marked by the reduction of g' to below unity, similar to the value $g < 1$ in passive systems.

Similarly, we can introduce an alternative localization parameter based on the fluctuation of conductance. Figure 2(a) shows that introduction of gain leads to enhanced fluctuations of the conductance despite the increase of its average value. We define a new localization parameter $g''=[2/(15F_{(2)})]^{1/2}$, where the numerical factor $2/15$ came from the leading term in the perturbative expansion of the variance of \bar{g} in the diffusive regime [7,8]. Based on data from Ref. [8] we estimate that in passive systems $g''=1.0$ when $g=0.91$.

In order to make a comparative analysis of the full distribution of conductance in an active medium [cf. Fig. 2(a)] with that in a passive medium [cf. Fig. 2(b)] we first find a passive system with the same value of second moment $F_{(2)}$. Then we scale down the conductance of the system with gain $\bar{g}_s=C\bar{g}$ so that $\langle \bar{g}_s \rangle = g_{\text{passive}}$. Note that $F_{(2)}=\text{var}(\bar{g})/g^2$ will not be affected by the scaling.

Figure 3 shows the change of $P(\bar{g}_s)$ with the introduction of gain (absorption). From the inset of Fig. 3 we see that in an amplifying random medium, as the optical gain coeffi-

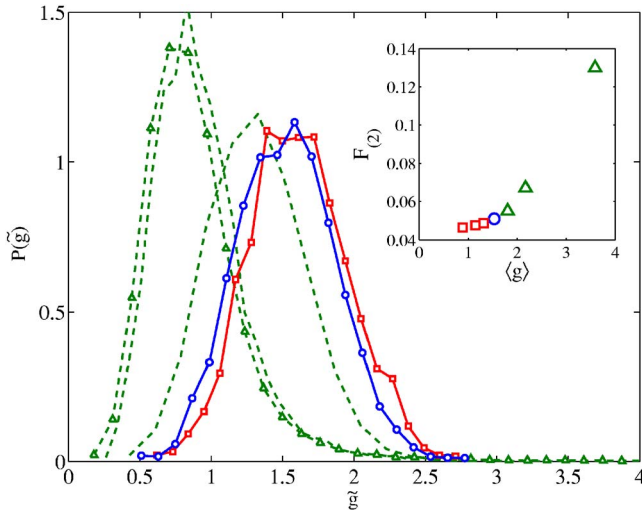


FIG. 3. (Color online) The inset plots the normalized second moment $F_{(2)} = \text{var}(\tilde{g})/g^2$ as a function of the average conductance g in systems with different amounts of gain (triangles correspond to $\sigma_g/\sigma_{g,cr} = 0.11, 0.22, \text{ and } 0.45$) or absorption (squares correspond to $\sigma_{abs}/\sigma_{g,cr} = -0.11, -0.22, \text{ and } -0.45$). The passive system (circle) is shown for reference. In the main plot, circles, squares, and dashed lines represent $P(\tilde{g})$ in passive ($g = 1.53$) or $P_c(\tilde{g}_s)$ in absorbing ($\sigma_a/\tau_{g,cr} = -0.45$) and amplifying (two dashed curves from right to left correspond to $\sigma_g/\sigma_{g,cr} = 0.22$ and 0.45) systems. Geometrically all systems are the same and differ only by the presence or absence of gain or absorption. The difference between the two leftmost dashed curves is discussed in the text.

cient increases, $\text{var}(\tilde{g})$ increases faster than the average value of the conductance (i.e., the normalized second $F_{(2)}$ moment increases with g). This is also evident from the shift of the scaled distribution toward smaller conductances. The increase of $F_{(2)}$ results in smaller $\langle \tilde{g}_s \rangle$ by virtue of the scaling. Second, the shape of the distribution also changes, which we will discuss below. The effect of absorption is significantly more moderate: squares (absorption) and the left dashed curve marked with triangles correspond to systems with the same absorption or gain coefficients.

Now we would like to return to the question of definition of conditional statistics in amplifying random media that we first discussed in Ref. [10]. Our numerical algorithm allows calculation of transport coefficients within a certain frequency range. This range is chosen narrow enough so that there is no appreciable change in physical parameters such as the transport mean free path [16]. Therefore, we use the conductance at different frequencies to increase the number of entries in our statistical ensembles to about $\sim 10^5$. When obtaining conditional statistical ensemble we dropped the disorder realizations that exceeded the lasing threshold. Thus, the conductances at the nonlasing frequencies for the lasing configurations are dropped, although lasing does not necessarily affect the conductances in the entire frequency range obtained numerically. Direct calculation of the conductance in this paper allows us to test the extent of this effect. In Figs. 3 and 4 we plotted $P_c(\tilde{g}_s)$ calculated using two conditional ensembles. (i) Disorder configurations (and thus contributions from all frequencies in that realization) which lead

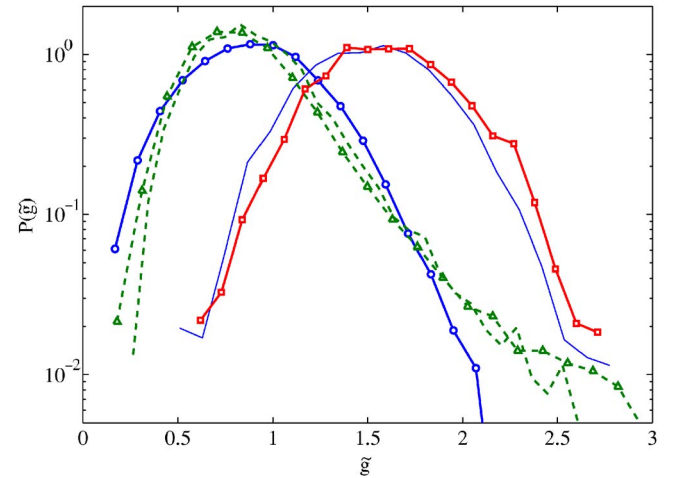


FIG. 4. (Color online) Conditional distribution of the scaled dimensionless conductance \tilde{g}_s (dashed lines) in a random amplifying medium ($\sigma_g/\sigma_{g,cr} = 0.45$) is compared with that in a passive medium (circles) with nearly the same $F_{(2)}$. Thin solid line and the line marked with squares (same as in Fig. 3) correspond to the original passive system and an absorbing system with absorption length equal to the amplification length of the system with gain.

to diverging intensity are dropped—dashed lines in the figures. (ii) The entire $P(\tilde{g})$ is plotted first. The obtained distribution contained two separate parts; the second one at large \tilde{g} is artificial and contains the lasing contributions. Its position is determined by the running time of our simulation and therefore can be well separated from the contribution of nonlasing configurations or frequencies. By discarding the contributions above the gap separating two maxima in $P(\tilde{g})$ we obtain the sought conditional distribution—dashed (second from left) curves in Figs. 3 and 4.

Comparison of the two conditional distributions shows that (ii) leads to slightly greater fluctuations. In the case of our samples $F_{(2),i} = 0.12$ whereas $F_{(2),ii} = 0.13$ compared to $F_{(2)} = 0.055$ in the passive system. Removal of the contribution from lasing configurations at nonlasing frequencies reduces fluctuations of conductance and may not be well justified. However, it leads to a relatively small correction as can be seen from Figs. 3 and 4.

AMPLIFICATION VERSUS LOCALIZATION

The question arises: How does $P_c(\tilde{g}_s)$ compare to $P(\tilde{g})$ of passive system (which exhibits the same fluctuation $F_{(2)}$)? Figure 4 compares the conditional distributions of dimensionless conductance in an amplifying random medium with that in a passive medium with the same $F_{(2)}$ ($g_{passive} = 0.92$) [24]. One can see that the distribution in the system with gain has a markedly narrower peak but a significantly more extended tail toward large \tilde{g}_s . This is in contrast to the intensity distribution [11] for which we found a good fit with the formula [14] of the passive system parametrized with a reduced value of conductance. The result presented in Figs. 3 and 4 suggests that strong modification of the conductance distribution occurs in systems with gain.

The optical gain is known to enhance the contribution from photons that propagate along long paths and therefore spend a long time inside the random medium before escaping [25]. These rare long paths should make contributions to the tails of the conductance distribution of a passive random medium. This is because long paths are likely to close on themselves and form loops [5], which is known to lead to universal conductance fluctuations [3]. In the language of quasimodes (eigenmodes of Maxwell's equations of a finite-size random medium without gain or absorption), with the introduction of optical gain, the quasimodes with longer lifetime experience more amplification, and they generate the large peaks in the conductance spectrum [Fig. 2(a)]. Thus they form the large- \tilde{g}_s tail of $P_c(g_s)$. Meanwhile, the small- g tail should be greatly suppressed. The above conclusions are indeed supported by our numerical data; see Fig. 4. Strong reshaping of the conductance distribution with an increase of amplification also explains why it differs drastically from that of a passive random medium with the same variance.

CONCLUSION

We computed numerically the distribution of dimensionless conductance in systems with and without optical gain.

The fluctuation of conductance is amplified in active random media. We introduced the concept of the conditional distribution of conductance $P_c(\tilde{g}_s)$ which omits the contribution of lasing realizations of random structures and scales the conductance for comparison with that of passive systems. Unlike the conditional intensity distribution of $P_c(T_{ab})$ [11], the obtained conductance distribution can no longer be fitted by that of a passive medium with a reduced value of the average conductance. $P_c(\tilde{g}_s)$ in an amplifying random medium differs significantly from that of the passive system with the same value of normalized variance $F_{(2)} = \text{var}(\tilde{g}) / \langle \tilde{g} \rangle^2$. It is skewed toward large values of \tilde{g} that we attribute to a dramatic reshaping of the distribution of quasimodes. In passive localized systems the transport is dominated by the modes that show the strongest coupling to the outside baths, whereas in amplifying systems the most decoupled, confined modes would be preferentially amplified and relocated into large- \tilde{g} tail of the conductance distribution.

ACKNOWLEDGMENTS

This work is supported by the National Science Foundation under Grant No. DMR 0093949. A.Y. also acknowledges support from University of Missouri–Rolla.

-
- [1] P. A. Mello and N. Kumar, *Quantum Transport in Mesoscopic Systems* (Oxford University Press, Oxford, 2004).
- [2] P. W. Anderson, Phys. Rev. **109**, 1492 (1958).
- [3] *Mesoscopic Phenomena in Solids*, edited by B. L. Altshuler, P. A. Lee, and R. A. Webb (North-Holland, Amsterdam, 1991).
- [4] *The Scattering and Localization of Classical Waves*, edited by P. Sheng (World Scientific, Singapore, 1990).
- [5] R. Berkovits and S. Feng, Phys. Rep. **238**, 136 (1994); M. C. W. van Rossum and Th. M. Nieuwenhuizen, Rev. Mod. Phys. **71**, 313 (1999).
- [6] R. Landauer, IBM J. Res. Dev. **1**, 223 (1957); E. N. Economou and C. M. Soukoulis, Phys. Rev. Lett. **46**, 618 (1981).
- [7] C. W. J. Beenakker, Rev. Mod. Phys. **69**, 731 (1997).
- [8] A. Mirlin, Phys. Rep. **326**, 259 (2000).
- [9] H. Cao, Waves Random Media **13**, R1 (2003).
- [10] A. Yamilov, S. H. Chang, A. Burin, A. Taflove, and H. Cao, Phys. Rev. B **71**, 092201 (2005).
- [11] A. Yamilov and H. Cao, Phys. Rev. E **70**, 037603 (2004).
- [12] A. Y. Zyuzin, Phys. Rev. E **51**, 5274 (1995).
- [13] H. Cao, J. Phys. A **38**, 10497 (2005).
- [14] E. Kogan, M. Kaveh, R. Baumgartner, and R. Berkovits, Phys. Rev. B **48**, 9404 (1993); Th. M. Nieuwenhuizen and M. C. W. van Rossum, Phys. Rev. Lett. **74**, 2674 (1995); E. Kogan and M. Kaveh, Phys. Rev. B **52**, R3813 (1995).
- [15] E. Abrahams, P. W. Anderson, D. C. Licciardello, and T. V. Ramakrishnan, Phys. Rev. Lett. **42**, 673 (1979).
- [16] S. H. Chang, A. Taflove, A. Yamilov, A. Burin, and H. Cao, Opt. Lett. **29**, 917 (2004).
- [17] A. Cohen, Y. Roth, and B. Shapiro, Phys. Rev. B **38**, 12125 (1988).
- [18] A. Yamilov (unpublished).
- [19] A. Yamilov, X. Wu, A. L. Burin, and H. Cao, Opt. Lett. **30**, 2430 (2005).
- [20] The considered problem is based on linear equations; thus the frequency normalization is arbitrary. For concreteness, in Fig. 2 we used $\lambda=2$ cm.
- [21] P. W. Brouwer, Phys. Rev. B **57**, 10526 (1998).
- [22] A. A. Chabanov, M. Stoytchev, and A. Z. Genack, Nature (London) **404**, 850 (2000).
- [23] P. Markos and C. M. Soukoulis, Phys. Rev. B **71**, 054201 (2005).
- [24] For $\langle \tilde{g} \rangle < 1$ the distribution of conductance develops a step feature at $g=1$ [P. Markos, Phys. Rev. B **65**, 104207 (2002)]. It occurs, however, at yet smaller $\langle g \rangle$ (see also [18]).
- [25] D. S. Wiersma, M. P. van Albada, and A. Lagendijk, Phys. Rev. Lett. **75**, 1739 (1995).