

Georgia Southern University

Digital Commons@Georgia Southern

---

Georgia International Conference on  
Information Literacy

---

Aug 23rd, 4:15 PM - 5:30 PM

## One Tutorial, Many Purposes: Adapting the University of California's Begin Research Tutorial for Diverse Instructional Settings

Jeffrey M. Mortimore

Bennett College, [jmortimore@georgiasouthern.edu](mailto:jmortimore@georgiasouthern.edu)

Follow this and additional works at: <https://digitalcommons.georgiasouthern.edu/gaintlit>



Part of the [Curriculum and Instruction Commons](#), and the [Information Literacy Commons](#)

---

### Recommended Citation

Mortimore, Jeffrey M., "One Tutorial, Many Purposes: Adapting the University of California's Begin Research Tutorial for Diverse Instructional Settings" (2013). *Georgia International Conference on Information Literacy*. 20.

<https://digitalcommons.georgiasouthern.edu/gaintlit/2013/2013/20>

This presentation (open access) is brought to you for free and open access by the Conferences & Events at Digital Commons@Georgia Southern. It has been accepted for inclusion in Georgia International Conference on Information Literacy by an authorized administrator of Digital Commons@Georgia Southern. For more information, please contact [digitalcommons@georgiasouthern.edu](mailto:digitalcommons@georgiasouthern.edu).

# ONE TUTORIAL, MANY PURPOSES:

ADAPTING THE UNIVERSITY OF CALIFORNIA'S BEGIN RESEARCH  
TUTORIAL FOR DIVERSE INSTRUCTIONAL SETTINGS



JEFFREY M. MORTIMORE

FORMERLY...

REFERENCE LIBRARIAN

BENNETT COLLEGE

GREENSBORO, NC

# THE CONTEXT:

## HOLGATE LIBRARY @ BENNETT COLLEGE

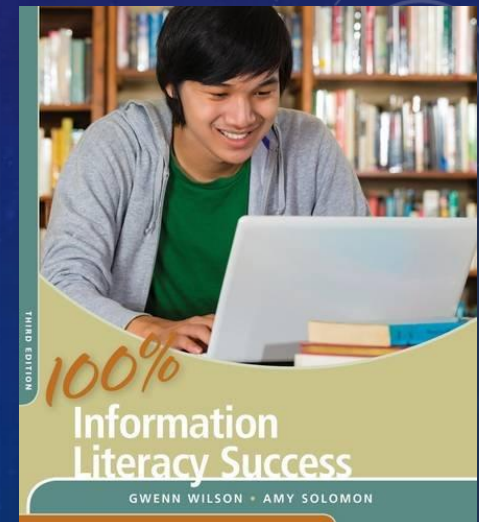
- All-women's historically black college
- ~680 FTE
- 2 librarians + 2 full-time paraprofessionals
- ~100 face-to-face instruction sessions per year
- First campus-wide CMS adopted Fall 2012



# THE CONTEXT:

## RESEARCH SEMINAR 200

- New Gen. Ed. Requirement starting Fall 2013
- Multiple medium-sized seminars targeted toward sophomores
- Several Intended Goals:
  - Address the “hole in the doughnut”
  - Manage the library’s instructional load
  - Support faculty IL training
  - Provide consistent message



# THE STRATEGY:

## UCAL'S "BEGIN RESEARCH" TUTORIAL

Palmer, C., C. Booth, and L. Friedman. "Collaborative Customization: Tutorial Design Across Institutional Lines." *College and Research Libraries News*. 73.5 (May 2012): 243-248.

### Six Modules:

- Begin Research
- Knowledge Cycle
- Find Books
- Find Articles
- Basic Search
- Advanced Search

UC LIBRARIES  
UNIVERSITY of CALIFORNIA

BEGIN RESEARCH KNOWLEDGE CYCLE FIND BOOKS FIND ARTICLES MAKE CITATIONS BASIC SEARCH ADVANCED SEARCH

1 of 17

### "Where Do I Start?"

Do you have an assignment to write a research paper but you're not sure where to start? Take a deep breath and begin by carefully reading the assignment requirements. This will help you understand the work you need to do.

First, let's think about what we mean when we say "research."

Assignment  
Topic  
Keywords  
Resources  
Quiz

© 2010 BY UC LIBRARIES

Seventh "Make Citations" module added fall 2012.

# THE STRATEGY: UCAL'S "BEGIN RESEARCH" TUTORIAL

UC LIBRARIES  
UNIVERSITY of CALIFORNIA

BEGIN RESEARCH KNOWLEDGE CYCLE FIND BOOKS FIND ARTICLES MAKE CITATIONS BASIC SEARCH ADVANCED SEARCH

2 of 17

## How Much Do You Already Know?

1. What makes a good topic?
  - A. It is broad enough that you can find enough information on the subject.
  - B. It is focused enough that you are not overwhelmed with too much information.
  - C. The topic is interesting to you.
  - D. All of the above.
2. If you are overwhelmed with too much information, you should:
  - A. Focus on a narrower topic.
  - B. Look for more information.
  - C. Stop researching.
  - D. Ask your instructor for help.
3. It is always a good idea to brainstorm keywords for similar ideas when you first begin to research your topic.
  - A. True
  - B. False
4. What statement below is generally true?
  - A. The more keywords you use, the better.
  - B. Using too many keywords can lead to too much information.
  - C. Using too few keywords can lead to too much information.
  - D. Using too many keywords can lead to too little information.

BEGIN RESEARCH Assignment Topic Keywords Resources Quiz

CC BY NC SA

UC LIBRARIES  
UNIVERSITY of CALIFORNIA

BEGIN RESEARCH KNOWLEDGE CYCLE FIND BOOKS FIND ARTICLES MAKE CITATIONS BASIC SEARCH ADVANCED SEARCH

3 of 10

## Database Basics

Use the library tools that help you locate articles on a particular topic or author.

**Hot Tip**  
An abstract is a short summary of an article. Reading the abstract saves time because an article may not be relevant to your topic.

**Hot Tip**  
Roll over me.

```

    graph TD
      Databases((Databases)) --> A[Contain citation information needed for bibliographies]
      Databases --> B[Contain abstracts of articles]
      Databases --> C[Can be called periodical indexes or article indexes]
      Databases --> D[Contain scholarly articles]
  
```

BEGIN RESEARCH Assignment Topic Keywords Resources Quiz

CC BY NC SA

UC LIBRARIES  
UNIVERSITY of CALIFORNIA

BEGIN RESEARCH KNOWLEDGE CYCLE FIND BOOKS FIND ARTICLES MAKE CITATIONS BASIC SEARCH ADVANCED SEARCH

13 of 17

## Dive Into a Sea of Resources!

Browse through general sources to get familiar with your topic. You will find many sources for locating background information. Remember our point from earlier in this tutorial: the source you select will determine what you find. Make sure you spend your time looking in the right places.

**General Information and Overview of Topic**  
Websites  
Encyclopedias

**Learn More About Details of Topic**  
Books  
Newspapers  
News Sources  
News Magazines

**Find Specific Information About Topic**  
Scholarly Journals  
Statistical Sources  
Government Publications

BEGIN RESEARCH Assignment Topic Keywords Resources Quiz

CC BY NC SA

# IMPLEMENTATION:

## HOLGATE'S "PATHFINDER" TUTORIAL

- Version 1.0 (Summer 2012)
  - *Revised language, images, & links*
  - *Created Pathfinder Workbook*
- Version 2.0 (Fall 2012)
  - *Added Qualtrics-based post-tests*
- Version 3.0 (Spring 2013)
  - *Converted Flash to Web Standards (HTML5)*



Thomas F. Holgate Library  
Bennett College

chat • email • phone

BEGIN RESEARCH KNOWLEDGE CYCLE FIND BOOKS FIND ARTICLES BASIC SEARCH ADVANCED SEARCH

1 of 16

### "Where Do I Start?"

Do you have an assignment to write a research paper but you're not sure where to start? Take a deep breath and begin by carefully reading the assignment requirements. This will help you understand the work you need to do.

First, let's think about what we mean when we say "research."

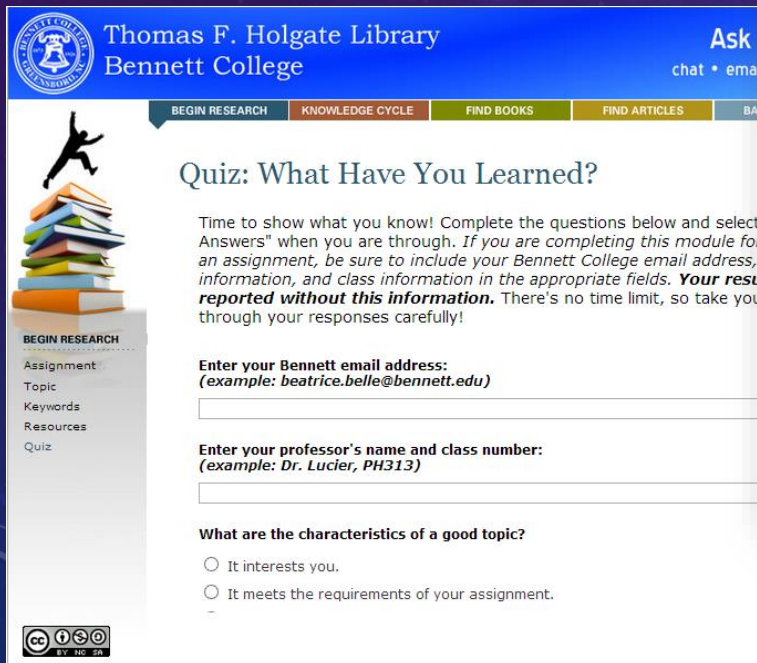
**BEGIN RESEARCH**

Assignment:  
Topic:  
Keywords:  
Resources:  
Quiz:

A woman sitting at a desk with a laptop, looking thoughtful.

# IMPLEMENTATION: HOLGATE'S "PATHFINDER" TUTORIAL

*An array of assets  
and assessments:*



Thomas F. Holgate Library  
Bennett College

Ask  
chat • email

BEGIN RESEARCH KNOWLEDGE CYCLE FIND BOOKS FIND ARTICLES

## Quiz: What Have You Learned?

Time to show what you know! Complete the questions below and select "Answers" when you are through. *If you are completing this module for an assignment, be sure to include your Bennett College email address, information, and class information in the appropriate fields. Your results reported without this information.* There's no time limit, so take your responses carefully!

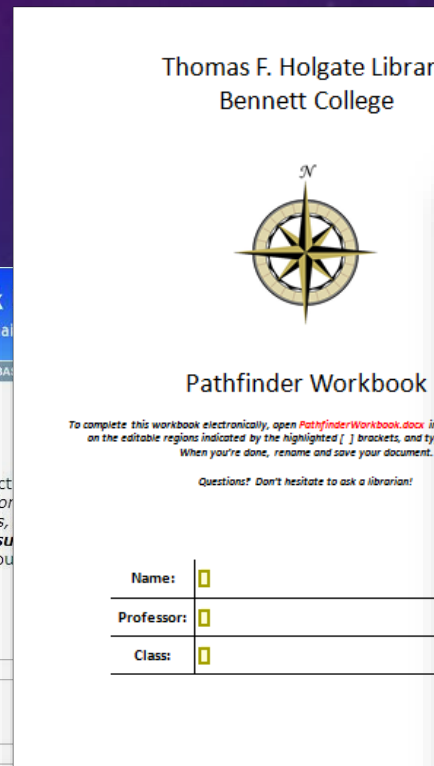
Enter your Bennett email address:  
(example: *beatrice.belle@bennett.edu*)

Enter your professor's name and class number:  
(example: *Dr. Lucier, PH313*)


What are the characteristics of a good topic?

- It interests you.
- It meets the requirements of your assignment.

CC BY-NC-SA



Thomas F. Holgate Library  
Bennett College

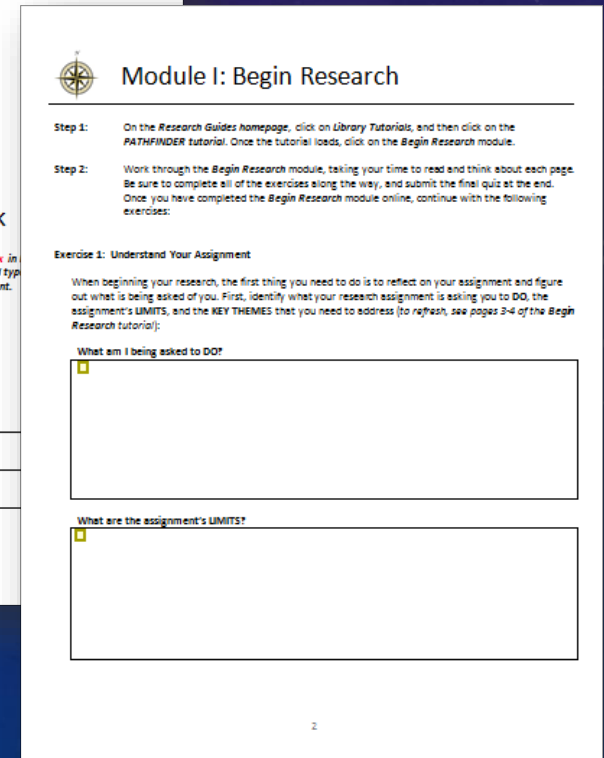


## Pathfinder Workbook

To complete this workbook electronically, open *PathfinderWorkbook.docx* in the editable regions indicated by the highlighted [ ] brackets, and type. When you're done, rename and save your document.

Questions? Don't hesitate to ask a librarian!

Name:	[ ]
Professor:	[ ]
Class:	[ ]



## Module I: Begin Research

**Step 1:** On the *Research Guides* homepage, click on *Library Tutorials*, and then click on the *PATHFINDER* tutorial. Once the tutorial loads, click on the *Begin Research* module.

**Step 2:** Work through the *Begin Research* module, taking your time to read and think about each page. Be sure to complete all of the exercises along the way, and submit the final quiz at the end. Once you have completed the *Begin Research* module online, continue with the following exercises:

**Exercise 1: Understand Your Assignment**

When beginning your research, the first thing you need to do is to reflect on your assignment and figure out what is being asked of you. First, identify what your research assignment is asking you to DO, the assignment's LIMITS, and the KEY THEMES that you need to address (to refresh, see pages 3-4 of the *Begin Research* tutorial):

What am I being asked to DO?

What are the assignment's LIMITS?

2



# PATHFINDER IN ACTION:

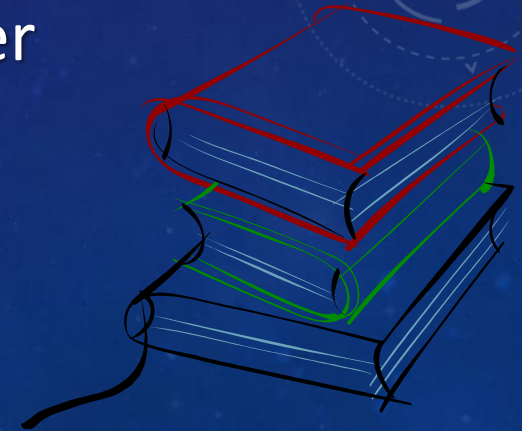
## WESTERN CIVILIZATION 101

- Multiple large sections; primarily freshwomen and sophomores
- Brief face-to-face instruction on reference resources early in semester
- Tutorial modules integrated into CMS
- *Pathfinder Workbook* assigned in coordination with portfolio projects
- Final portfolio due late in semester after two graded revisions



# PATHFINDER IN ACTION: SOCIAL WORK 405 CAPSTONE

- Single medium-sized seminar; all juniors or seniors
- “Flipped” instruction on discipline-specific resources (e.g., NASW publications & EBSCO SocINDEX)
- *Pathfinder Workbook* assigned early in conjunction with literature review due mid-semester
- *Pathfinder Workbook* used to guide follow-up reference consultations



# PATHFINDER IN ACTION:

## LITERATURE & WRITING 102-103

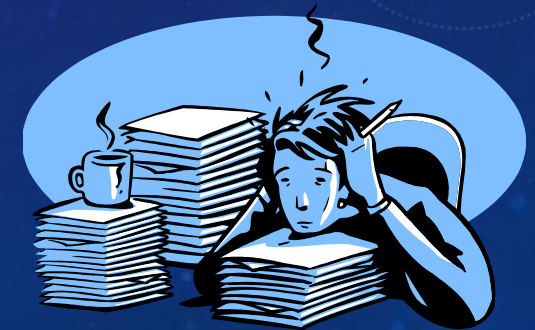
- Multiple medium-sized seminars; all freshmen
- Part of QEP, which includes WAC and information literacy components
- Used by LW faculty unable to schedule face-to-face instruction during spring semester
- Provided “stop-loss” during period of reduced staffing



# PATHFINDER IN ACTION:

## WILLA B. PLAYER SEMINAR (FALL 2012)

- Multiple small-sized seminars; all freshwomen
- Required 20+ page capstone research paper
- Teaching duty dropped on faculty just as fall semester began (*in some cases, after*)!
- Used by several faculty to provide curricular structure
- Combined with I-Search assignments



# OUTCOMES & OBSERVATIONS:

## YEAR ONE (2012-2013)

- ~15% of FTE participated in Qualtrics quizzes
- Accounted for ~17% of total instructional contact hours
- Adopted by at least 9 courses during 2012-2013
- All courses adopted workbook; at least five received face-to-face instruction
  
- Provides intervention for hard-to-reach classes
- Supports “flipped instruction”
- Provides lots of assessment
- Could be used for online-only courses

# LOOKING FORWARD:

## TASKS FOR PATHFINDER VERSION 4.0?

- Better integration of plagiarism/citation style
- Better integration of website evaluation
- Less cumbersome / better tailored workbook
  
- Better integration of assessments into CMS
- Question pool for formative & summative assessments

# QUESTIONS?

## ...AND A FEW RESOURCES

- Current UCal source files:  
[https://webfiles.uci.edu/xythoswfs/webui/xy-8130849\\_1](https://webfiles.uci.edu/xythoswfs/webui/xy-8130849_1)
- Current Pathfinder source files:  
[http://www.bennett.edu/HTML/pathfinder/pathfinder\\_files.zip](http://www.bennett.edu/HTML/pathfinder/pathfinder_files.zip)
- Google Swiffy:  
<https://www.google.com/doubleclick/studio/swiffy/>
- Scirra Construct 2:  
<https://www.scirra.com/>
- Contact Jeff Mortimore:  
<http://www.jeffmortimore.com>