

Georgia Southern University  
**Digital Commons@Georgia Southern**

---

Interdisciplinary STEM Teaching & Learning  
Conference

---

Mar 7th, 10:30 AM - 11:15 AM

## Developing Collaborative Partnerships: STEM on a Mission

Kania Greer

Georgia Southern University, [kagreer@georgiasouthern.edu](mailto:kagreer@georgiasouthern.edu)

Robert L. Mayes

Georgia Southern University, [rmayes@georgiasouthern.edu](mailto:rmayes@georgiasouthern.edu)

Debbie Walker

Georgia Southern University, [dwalker@georgiasouthern.edu](mailto:dwalker@georgiasouthern.edu)

Follow this and additional works at: <https://digitalcommons.georgiasouthern.edu/stem>



Part of the [Science and Mathematics Education Commons](#)

---

### Recommended Citation

Greer, Kania; Mayes, Robert L.; and Walker, Debbie, "Developing Collaborative Partnerships: STEM on a Mission" (2014). *Interdisciplinary STEM Teaching & Learning Conference*. 67.  
<https://digitalcommons.georgiasouthern.edu/stem/2014/2014/67>

This event is brought to you for free and open access by the Conferences & Events at Digital Commons@Georgia Southern. It has been accepted for inclusion in Interdisciplinary STEM Teaching & Learning Conference by an authorized administrator of Digital Commons@Georgia Southern. For more information, please contact [digitalcommons@georgiasouthern.edu](mailto:digitalcommons@georgiasouthern.edu).

INSTITUTE *for* INTERDISCIPLINARY **STEM** EDUCATION



**i<sup>2</sup>STEM<sup>e</sup>**

SCIENCE  
TECHNOLOGY  
ENGINEERING  
MATH

GEORGIA SOUTHERN  
UNIVERSITY

# Funded Grants

- Race to the Top-Real STEM: Mayes
- Teacher Quality-Savannah River Basin: Mayes
- Innovative Engagement In Engineering: Hilpert
- Major Research Instrumentation-  
Nanotechnology Spinning and Professional  
Development – Khan
- Georgia Department of Education-Complex  
Adaptive Systems: Mayes

# Submitted Grants in Review

- 1) REAL – PI Mayes
- 2) DR K-12 – PI Mayes
- 3) 5 Teacher Quality Grants – PI's Sturges, Mayes, Hodges,
- 4) REU – PI Aikens
- 5) ITEST – PI Rios-Gutierrez
- 6) National Institute of Health – R21 – PI Samawi
- 7) IUSE - PI Khan
- 8) 5 STAR Restoration Program - PI Colon-Gaud
- 9) 21<sup>st</sup> Century Learning – PI Boys and Girls Club
- 10) EHR – PI Sturges

# Grant Proposals in Process

- STEM CP-MSP
  - Leckie, Schreiber, Arrington, Rivera, Mayes
- CyberSEES
  - Haddad, Samawi, Rogers, Leege, Mayes
- Noyce
  - LoBue (Chemistry)
- Honda Foundation
  - Camden County School System

# 2013 - I<sup>2</sup>STEM<sup>e</sup> Outreach

- STEM Fest: over 2000 participants
- STEM Café
  - Dr. John Van Stan – Urban Forest Design: An Example of STEM Education in Action
  - Dr. Danny Gleason – Are Coral Reefs on Their Last Breath and Why Should I Care?
- Real STEM Day
  - Students from Bulloch, Camden, Burke, and Ware
- GUS in Space
  - Contributor and assistance

# Future Outreach Activities

- **ARTSFEST 2014 – APRIL 5, 2014**
- STEM Café – April 24, 2014
  - Dr. Paul Pressley – Ossabaw Island the Pin Point People: The Tabby Connection
- **STEM Summit – May 28-30 Savannah**
- STEMFest 2014 – September TBD
- Science Olympiad – February or March 2015

# I<sup>2</sup>STEM<sup>e</sup> Teaching

Interdisciplinary FYE Course Fall 2014

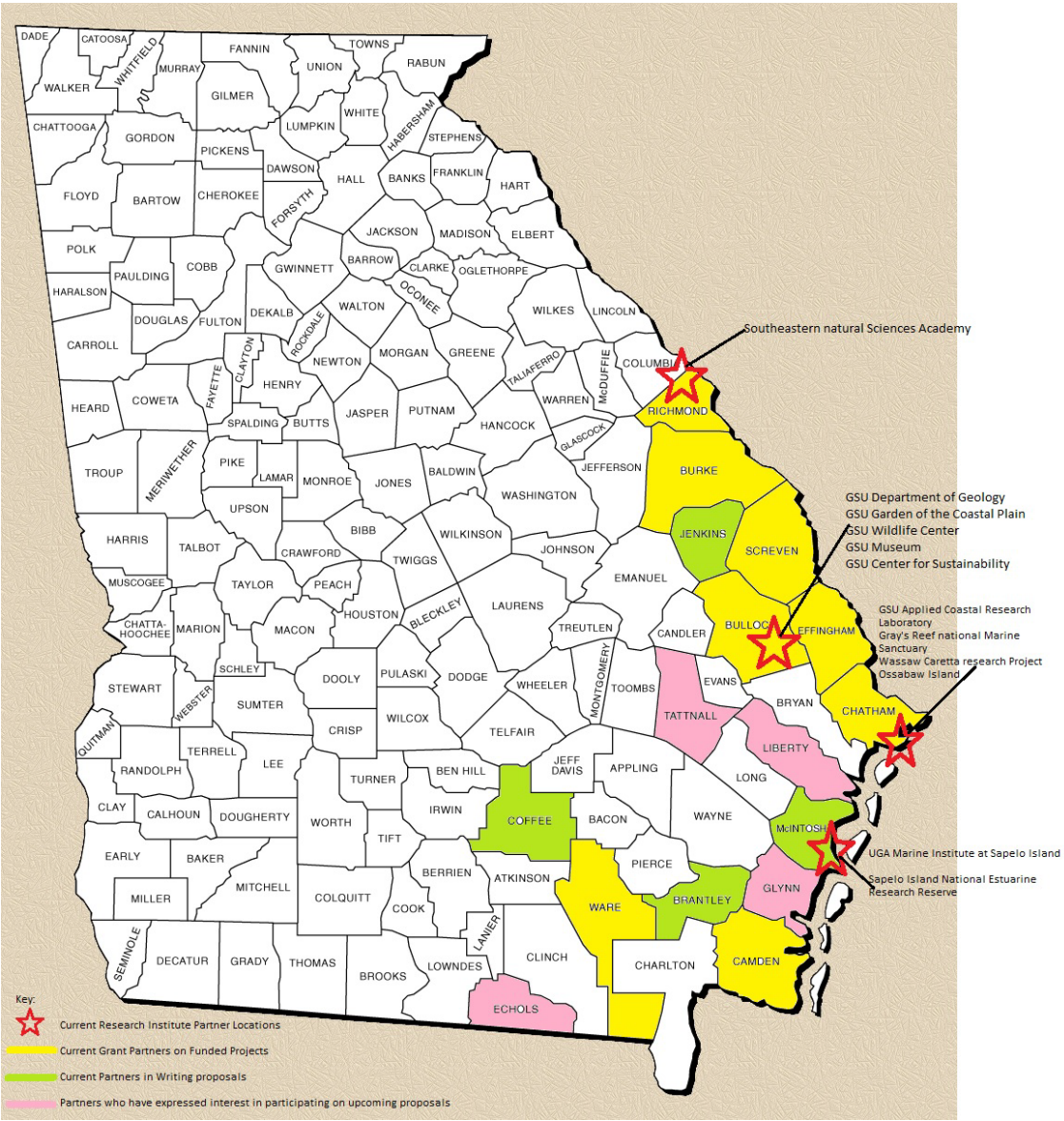
## Solutions To Epidemic Meltdown: ZombieSTEM

Using the recent focus on a Zombie Apocalypse as a framework, we will investigate real world epidemic threats such as influenza. Student's will take an interdisciplinary approach to creating solutions to the meltdown of society from communications and logistics to simple survival and dissemination of information when an infrastructure is drastically reduced (airline flights shut down; reduction of resources). They will investigate historical epidemics such as the plague and consider epidemic prediction, information, dissemination, pathogen identification, containment, cure, and humanitarian response.

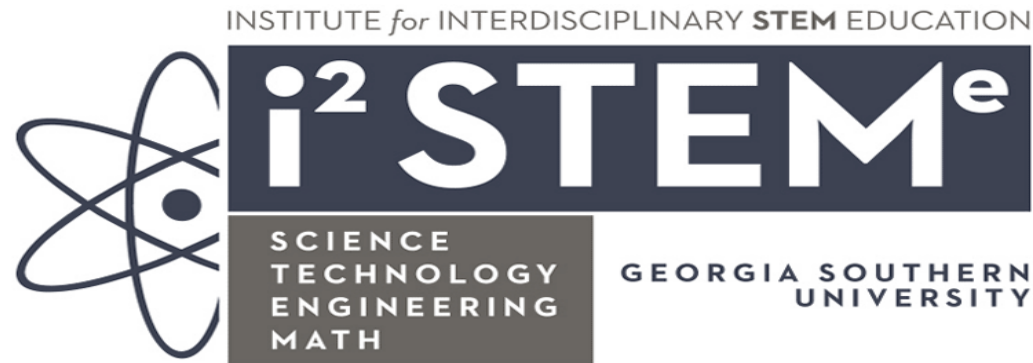
**Lead By:** Dr. Diana Sturges (Anatomy) with Dr. Jim LoBue (Chemistry), Dr. Joanna Schreiber (Writing and Linguistics), Dr. Robert Mayes (Education), Dr. Fernando Rios-Gutierrez (Engineering), and Dr. Hani Samawi (Public Health)



# Current Activities



For more information:



Dr. Robert Mayes, Director: [rmayes@georgiasouthern.edu](mailto:rmayes@georgiasouthern.edu)

Dr. Kania Greer, Grants Coordinator: [kagreer@georgiasouthern.edu](mailto:kagreer@georgiasouthern.edu)