


Mar 9th, 1:45 PM - 2:00 PM

The USG STEM II Initiative at Georgia Perimeter College

Pamela J. W. Gore
Georgia Perimeter College

Kouok Law
Georgia Perimeter College

Follow this and additional works at: <https://digitalcommons.georgiasouthern.edu/stem>

 Part of the [Scholarship of Teaching and Learning Commons](#), and the [Science and Mathematics Education Commons](#)

Recommended Citation

Gore, Pamela J. W. and Law, Kouok, "The USG STEM II Initiative at Georgia Perimeter College" (2012). *Interdisciplinary STEM Teaching & Learning Conference*. 51.
<https://digitalcommons.georgiasouthern.edu/stem/2012/2012/51>

This event is brought to you for free and open access by the Conferences & Events at Digital Commons@Georgia Southern. It has been accepted for inclusion in Interdisciplinary STEM Teaching & Learning Conference by an authorized administrator of Digital Commons@Georgia Southern. For more information, please contact digitalcommons@georgiasouthern.edu.

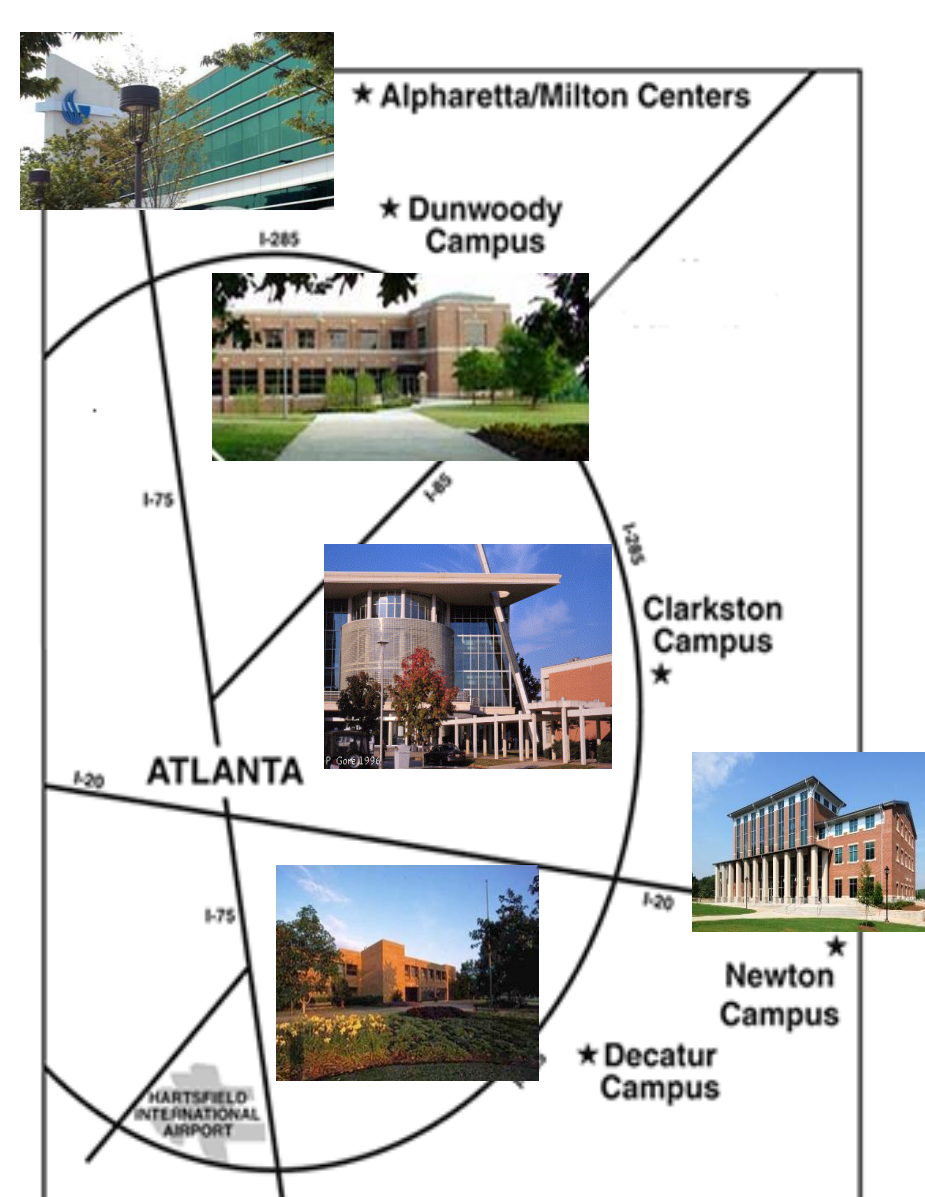
The USG STEM II Initiative at Georgia Perimeter College



Pamela J. W. Gore and Kouok Law
Georgia Perimeter College, Clarkston, Georgia 30021



GEORGIA PERIMETER COLLEGE



- Five locations + online
- 26,470 students Fall 2011
- 3rd largest institution in the University System of GA
- GA's largest freshman class -15,700 students
- The college of choice for more Georgia students

STEM II INITIATIVE AT GPC

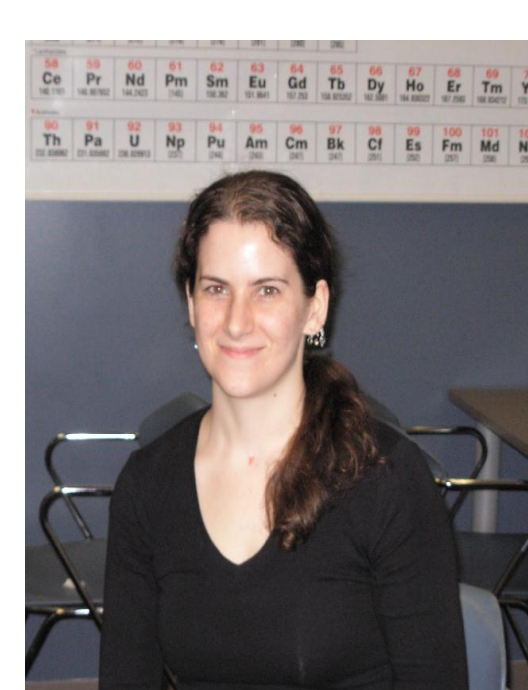
The STEM II Initiative at GPC consists of several interrelated strategies:

- Faculty Mini-grants
- Peer-Led Undergraduate Study (PLUS) Tutors
- Project MESA
- Seminars and workshops
- Internship and research experience placement
- STEM Achievement Recognition (STARs)
- STEM Career and TAG Fair
- Student chapters of STEM Professional Organizations
- Executive Director of STEM



PEER-LED UNDERGRADUATE STUDY (PLUS) TUTORS

Six sophomore-level students were hired to serve four campuses at GPC, each working 10 hours per week with students in CHEM 1211 in Fall 2011, and both CHEM 1211 and 1212 in Spring 2012.



STEM FACULTY MINI-GRANTS

- Encouraging faculty collaboration between campuses and disciplines
- Producing innovating educational materials
- Offering field research experiences for students in STEM gateway courses
- \$4500 per project



2011-2012 Mini-Grant Projects

Kim Bennekin	Fostering meaningful interaction in online college algebra courses
Amy Cook	Lecture slides for Principles of Chemistry I and II
Amy Cook	Teaching demonstration videos for Principles of Chemistry II
Carmen Hall	Undergrad research at Snapfinger Creek Mitigation Bank
Jonathan Lochamy	Discover Life Research Interns
Ilse Ricketts	Introduction to Science Laboratory Bootcamp
Behnaz Rouhani	Identifying students' misconceptions in Calculus
Allison Wolf	More effective Resources - better results

PROJECT MESA

Preparing educationally disadvantaged STEM majors (female, minorities, low-income, 1st generation college) to transfer and graduate from a four-year institution with a math-based degree.

Assists students in:

- developing academic and leadership skills,
- increasing educational performance, and
- gaining confidence in their ability to compete professionally



GPC MESA Scholars

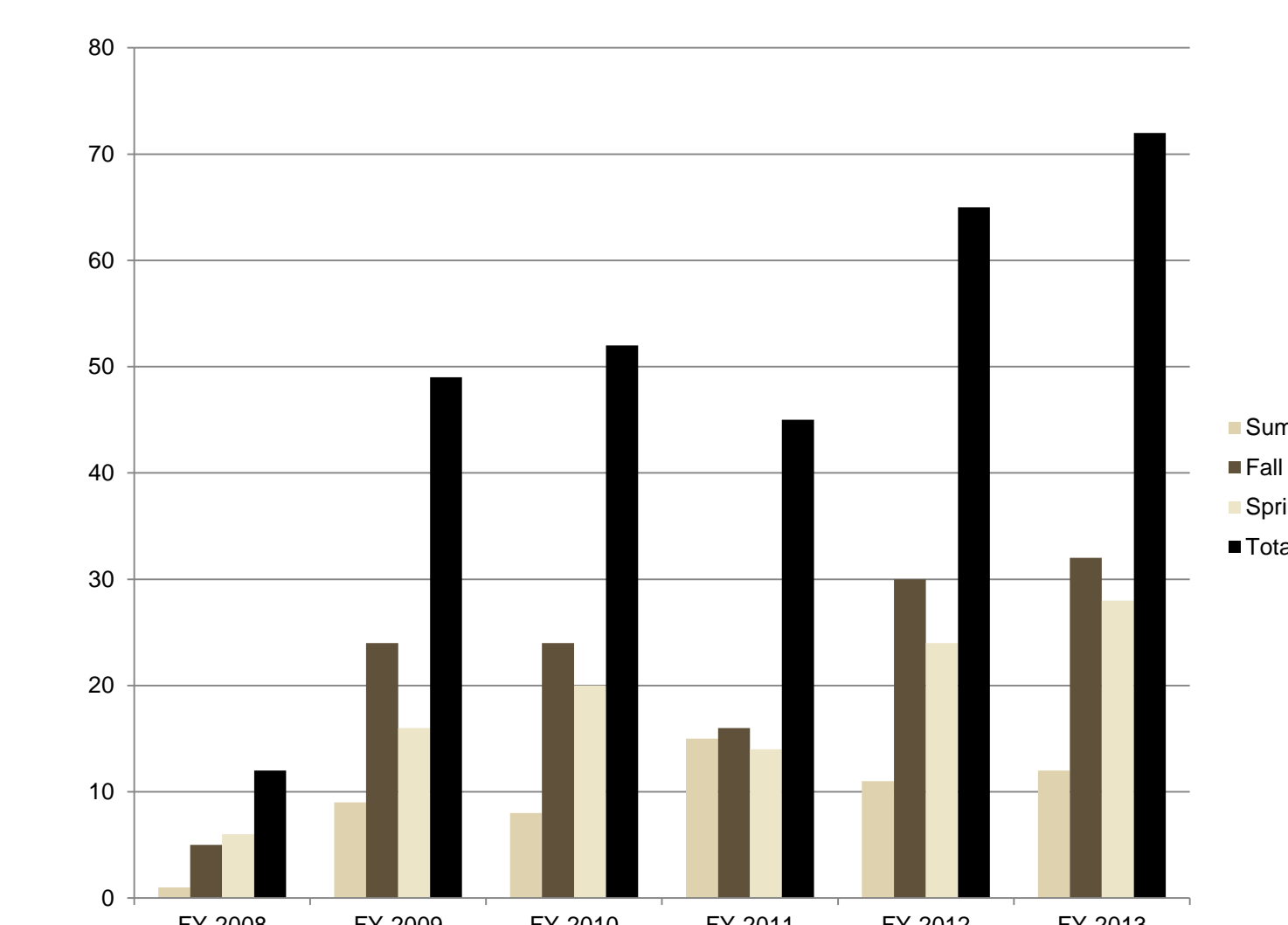
	Summer	Fall	Spring	Total
FY-2008		49	55	70
FY-2009	35	96	115	142
FY-2010	32	79	53	110
FY-2011	24	69	71	95
FY-2012	28	77	85?	125?
TOTAL	119	370	379?	542?



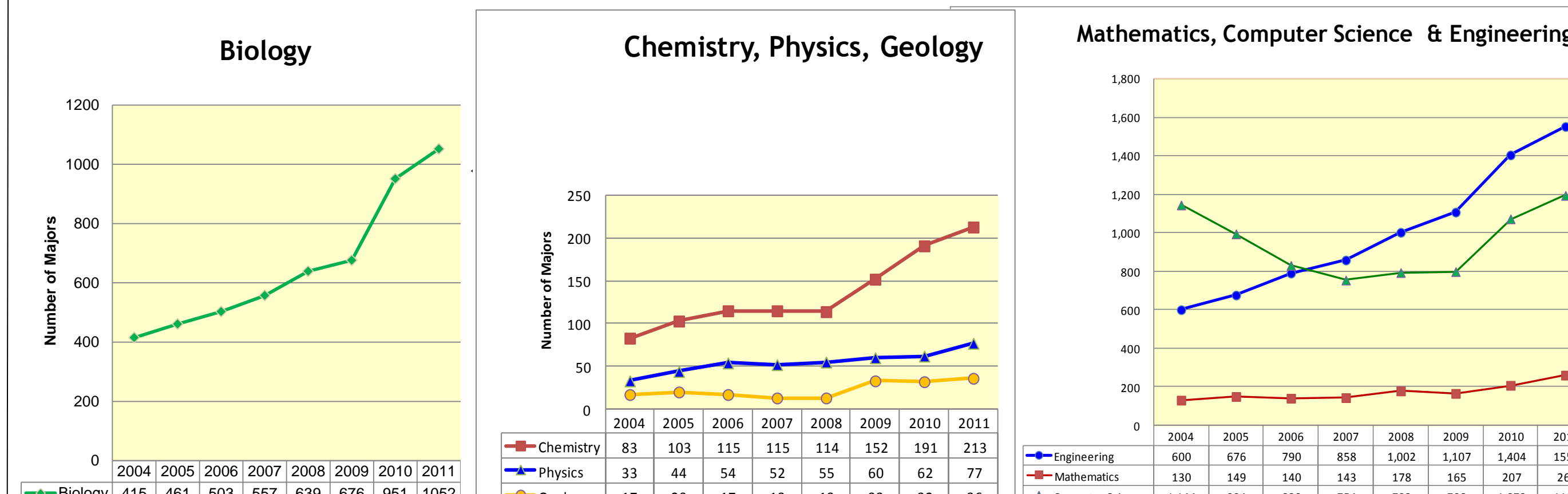
GPC MESA Transfers

	Summer	Fall	Spring	Total
FY-2008	1	5	6	12
FY-2009	9	24	16	49
FY-2010	8	24	20	52
FY-2011	15	16	14	45
FY-2012	11	30	24	65
FY-2013	12?	32?	28?	72?
TOTAL	56	131	108	295

GPC MESA Transfer Chart



NUMBER OF STEM MAJORS IS INCREASING



GPC-MESA Cumulative GPA

	2007*	2008	2009	2010	2011	2012
GPA ≥ 3.5	20.5%	30.0%	31.0%	25.5%	37.9%	?
3.0 ≤ GPA < 3.5	31.8%	21.4%	22.5%	35.5%	28.4%	?
2.5 ≤ GPA < 3.0	20.4%	25.7%	19.0%	18.2%	21.1%	?
2.0 ≤ GPA < 2.5	9.1%	18.7%	20.4%	13.6%	9.5%	?
GPA < 2.0	18.2%	4.3%	7.1%	7.3%	3.2%	?



MESA Conference 2012 with students from GPC, Atlanta Metropolitan College, and Darton College.