



Missouri University of Science and Technology  
Scholars' Mine

International Conference on Case Histories in  
Geotechnical Engineering

(2013) - Seventh International Conference on  
Case Histories in Geotechnical Engineering

02 May 2013, 2:00 pm - 3:30 pm

## Seismic Hazard and Geophysical Investigations for Architectural Heritage Preservation in Egypt: The Case of Habib Sakakini Palace

Sayed Hemeda  
*Cairo University, Egypt*

Mohamed Gamal  
*Cairo University, Egypt*

Kyriazis Pitilakis  
*Aristotle University of Thessaloniki, Greece*

Follow this and additional works at: <https://scholarsmine.mst.edu/icchge>

 Part of the [Geotechnical Engineering Commons](#)

### Recommended Citation

Hemeda, Sayed; Gamal, Mohamed; and Pitilakis, Kyriazis, "Seismic Hazard and Geophysical Investigations for Architectural Heritage Preservation in Egypt: The Case of Habib Sakakini Palace" (2013). *International Conference on Case Histories in Geotechnical Engineering*. 29.  
<https://scholarsmine.mst.edu/icchge/7icchge/session02/29>

This Article - Conference proceedings is brought to you for free and open access by Scholars' Mine. It has been accepted for inclusion in International Conference on Case Histories in Geotechnical Engineering by an authorized administrator of Scholars' Mine. This work is protected by U. S. Copyright Law. Unauthorized use including reproduction for redistribution requires the permission of the copyright holder. For more information, please contact [scholarsmine@mst.edu](mailto:scholarsmine@mst.edu).

## **SEISMIC HAZARD AND GEOPHYSICAL INVESTIGATIONS FOR ARCHITECTURAL HERITAGE PRESERVATION IN EGYPT: THE CASE OF HABIB SAKAKINI PALACE**

**Sayed Hemeda**

Conservation Department,  
Faculty of Archaeology  
Cairo University, Giza-Egypt

**Mohamed Gamal**

Geophysics Department,  
Cairo University, Giza-Egypt

**Kyriazis Pitilakis**

Civil Engineering Department,  
Aristotle University of Thessaloniki,  
Greece

### **ABSTRACT**

The modern architectural heritage of Egypt is rich, and extensively variable. It covers all kinds of monumental structures from palaces, public buildings, residential and industrial buildings, to bridges, springs, gardens and any other modern structure, which falls within the definition of a monument and belongs to the Egyptian cultural heritage. We present herein a comprehensive geophysical survey and seismic hazard assessment for the rehabilitation and strengthening of Habib Sakakini's Palace in Cairo, which is considered one of the most significant architectural heritage sites in Egypt. The palace located on an ancient water pond at the eastern side of Egyptian gulf close to Sultan Bebris Al-Bondoqary mosque, a place also called "Prince Qraja al-Turkumany pond". That pond had been filled down by Habib Sakakini at 1892 to construct his famous palace in 1897.

Various survey campaigns have been performed comprising geotechnical and geophysical field and laboratory tests, aiming to define the physical, mechanical and dynamic properties of the building and the soil materials of the site where the palace is founded. All these results together with the seismic hazard analysis will be used for the seismic analysis of the palace response in the framework of the rehabilitation and strengthening works foreseen in a second stage. We present herein the most important results of the field campaign and the definition of the design input motion.

*Keywords:*SHA, PGA, microtremors, natural frequency, ElSakakini Palace- Cairo, geotechnical, geophysical campaign.

### **INTRODUCTION**

The seismic hazard analysis for El Sakakini Palace has been performed based on historical earthquakes, and maximum intensity.PGA with 10% probability of exceedance in 50 and 100 years is found equal to 0.15g and 0.19g respectively. P-wave and S-wave seismic refraction indicated a rather low velocity soil above the seismic bedrock found at depths higher than 20m. Ambient noise measurements have been used to determine the natural vibration frequency of soil and structure of El-Sakakini Palace. The fundamental frequency of El-Sakakini palace is 3.0Hz very close to the fundamental frequency of the underlying soil, which makes the resonance effect highly prominent.

Some floors are considered dangerous since it show several resonance peaks and high amplification factors (4<sup>th</sup> and 5<sup>th</sup>

floors) these floors are made of wood so, warnings to decision makers are given for the importance of such valuable structures.

The seismic design and risk assessment of El Sakakini palace is performed in two steps. In the first one we perform all necessary geotechnical and geophysical investigation together with seismic surveys and seismic hazard analysis in order to evaluate the foundation soil properties, the fundamental frequency of the site and the structure, and to determine the design input motion according to Egyptian regulations. The second phase comprises the detailed analysis of the palace and the design of the necessary remediation measures. IN the present pare we present the results of the first phase.

## 2. SEISMIC HAZARD

### 2.1 Historical Seismicity

Egypt possesses a rich earthquake catalogue that goes back to the ancient Egyptian times. Some earthquakes are reported almost 4000 years ago. Figure 1 shows the most important historical events affecting ElSakakini palace. We can see that the Faiyum area as well as the Gulf of Suez is the most important earthquake zones affecting the place.

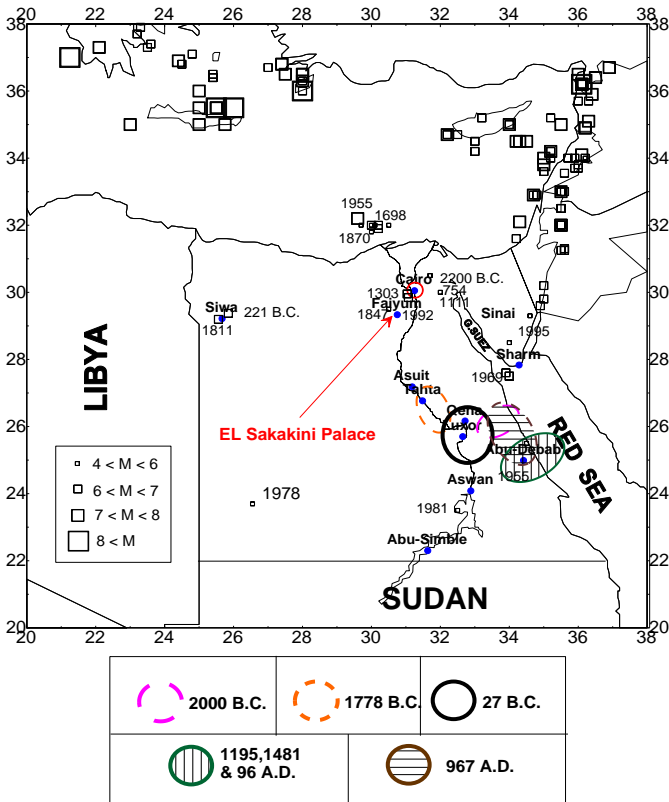


Fig. 1: Important and historical earthquakes occurred in and around El Sakakini Palace area in the period 2200 B.C to 1995.

### 2.2 Maximum Intensity

Historical seismicity and maximum reported intensity is a good preliminary index of the expected severity of a damaging earthquake. Available isoseismal maps in the time period 2200 B.C. to 1995 were digitized and re-contoured to determine the maximum intensity affecting the place. This was done using a cells value of equal area 0.1 lat. × 0.1 long. Figure 2 present the produced IMM intensity showing that a maximum IMM of VII is good design value.

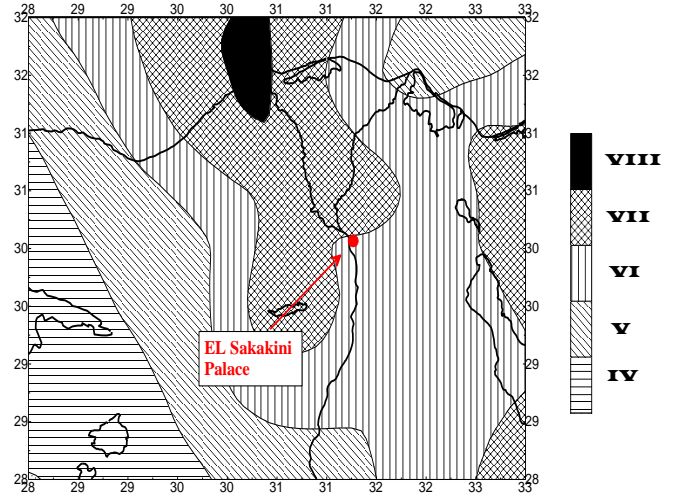


Fig. 2: Maximum intensity zonation map based on the historical seismicity reported in the time period 2200 BC to 1995

### 2.3 Probabilistic Hazard Assessment

An improved earthquake catalogue for Egypt and surrounding areas affecting El Sakakini Palace has been prepared for the purposes of this study partially based on recent work of Gamal and Noufal, 2006. The catalogue is using the following sources:

- For the period 2200 B.C to 1900: Maamoun ,1979; Maamoun et al., 1984 ; Ben-Menahem 1979 and Woodward-Clyde consultants, 1985.
- For the period 1900 to 2006: Makropoulos and Burton, 1981; Maamoun et al., 1984 ; Ben-Menahem 1979; Woodward-Clyde consultants, 1985; Riad and Meyers, 1985; Shapira, 1994 and NEIC, 2006; Jordan seismological observatory 1998-2000.

The horizontal peak ground acceleration over the bedrock of El Sakakini area was estimated using Mcguire program 1993. 37 seismic source zones were used to determine the horizontal PGA over the bedrock (Figure 3), while PGA attenuation formula of Joyner and Boore , 1981 was used because of its good fitting to real earthquake data in Egypt. A complete analysis for the input parameters to estimate the PGA values over the bedrock can be found in Gamal and Noufal, 2006.

$$(PGA)= 2.14 e^{1.13 M} D^{-1} e^{-0.00590 D}=(R^2+4.0^2)^{0.5} \quad (1)$$

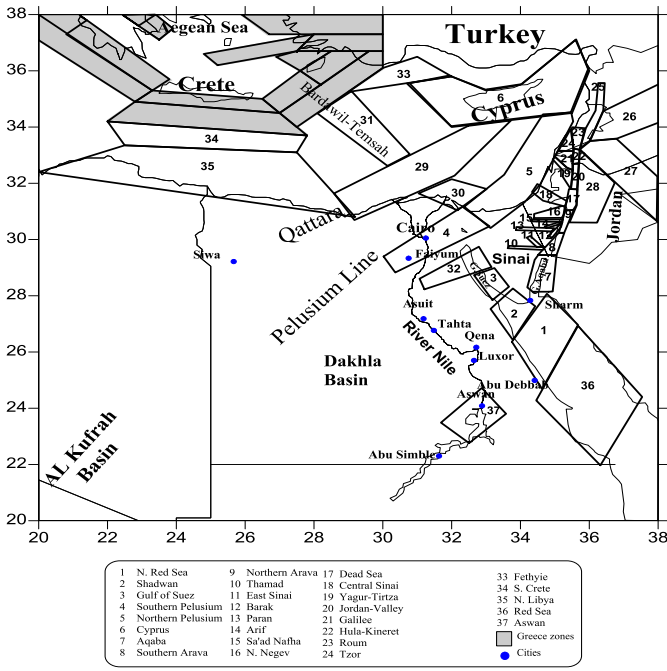


Fig. 3: Seismic source regionalization using 37 seismic source zone (except greece zones) adopted for Egypt and surrounding areas (Gamal and Noufal, 2006).

The probabilistic analysis provided the following results: The peak horizontal acceleration in gals with 10 % probability of exceedance over 50 years is 144cm/sec<sup>2</sup>(or 0.147g) For 10% probability in 100 years the estimated PGA for rock conditions is 186 (cm/sec<sup>2</sup>) (or 0.19g)(Figures 3 and 4). These values are quite high and considering the local amplification they may affect seriously the seismic design and stability of El. Sakakini Palace.

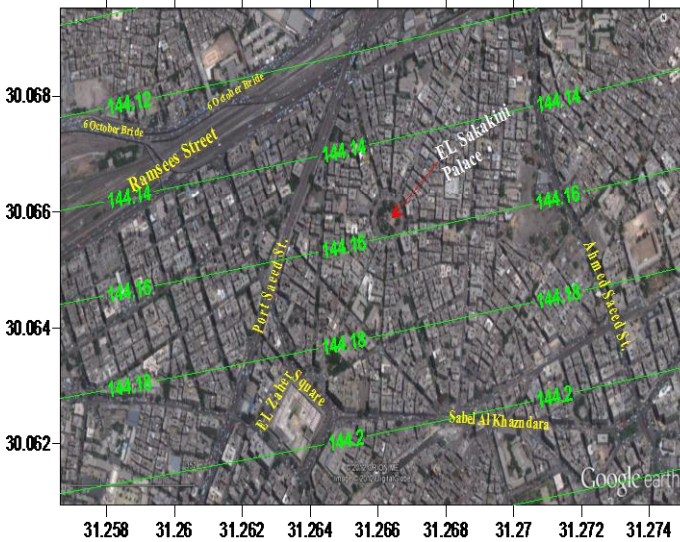


Fig. 4a: Peak Horizontal Acceleration in gals (cm/sec<sup>2</sup>) for the seismic bedrock with 10% probability of exceedance in 50 years

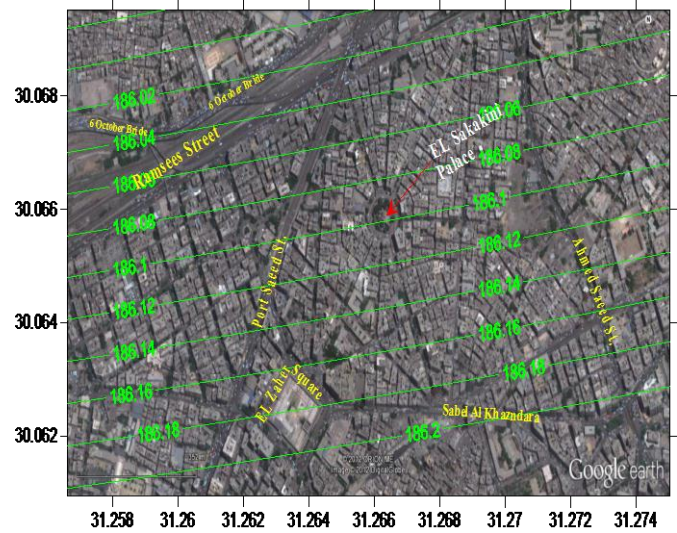


Figure 4b: Peak Horizontal Acceleration in gals (cm/sec<sup>2</sup>) for the seismic bedrock with 10 % probability of exceedance over 100years

### 3. GEOTECHNICAL INVESTIGATION

Core drilling is among the routine methods for subsurface exploration. Most commonly, NX-size core drill is used, representing a hole diameter of 76 mm (3”) and a core diameter of 54 mm (2 1/8”). The drilling often has multiplier purposes, of which the following are in most cases the most important:

- Verification of the geological interpretation.
- Detailed engineering geological description of rock strata.
- To obtain more information on rock type boundaries and degree of weathering.
- To supplement information on orientation and character of weakness zones.
- To provide samples for laboratory analyses.
- Hydro geological and geophysical testing.
- Input data for engineering classification of rock masses.

The geotechnical investigation, six geotechnical boreholes with Standard Penetration Test (SPT) measurements have been carried out in the archaeological site included the drilling of three geotechnical boreholes with integral sampling to a depth 20 meters, one borehole to depth 15 meters and two boreholes to depth 10 meters at six locations in the site. The geotechnical data also indicated the ground water level at the archaeological site. We did all the boreholes inside the site with hand boring machine.

The results of laboratory tests which have been carried out on the extracted soil samples from the boreholes, which include specific gravity (Gs), water content (Wn), saturated unit weight (γsat), unsaturated unit weight (γunsat), Atterberg limits and uniaxial compressive strength (UCS), in addition to

the ground water table (GWT), are shown in the figures (7a,7b).

The shear wave profile obtained by using ReMi compared very well to geotechnical boreholes and geophysical survey data. In addition, the shear wave profile obtained by using ReMi Performed much better than commonly used surface shear-wave velocity measurements.

**Geotechnical boreholes (1) through (3) indicated that:**

- 1 - Filling of Fill (silty clay and limestone fragments, calc, dark brown) From ground surface 0.00m to 3.50m depth.
- 2 - Sand Fill (silty clay, medium, traces of limestone& red brick fragments, calc, dark brown) From 3.50m to 5.00m depth.
- 3 - Silty clay, stiff, calc, dark brown From 5.00m to 6.50m depth.
- 4 - Clayey silt, traces of fine sand & mica, yellowish dark brown From 6.50m to 8.50m depth.
- 5 - Silty sand, fine, traces of clay & mica. Dark brown. From 8.50m to 11.00m depth.
- 6 - Sand, fine, some silt, traces of mica, yellowish dark brown. From 11.00m to 14.00m depth.
- 7 - Sand, fine to medium, traces of silt& mica, traces of fine to medium gravel, traces of marine shells, yellowish dark brown. From 14.00m to 16.00m depth.
- 8 - Sand, fine, traces of silt & mica, yellowish dark brown. From 16.00m to 18.00m depth.
- 9 - Sand & Gravel, medium sand, graded gravel, traces of silt, yellow darkbrown. From 18.00m to 20.00m depth. End of drilling at 20.00m.

**Geotechnical boreholes (4) through (6) indicated that:**

- 1 - Filling of Fill (silt, clay and fragments of limestone and crushed brick, From ground surface 0.00m to 3.50m depth.
- 2 - brown stiff silty clay and traces of limestone gravels, From 12.00m to 14.00m depth.
- 3 - dark brown clay silt with traces of fine sand, From 5.00m to 6.50m depth.
- 4 - silt, traces of brown fine sand & traces of clay From 14.00m to 15.00m depth.



Fig.5 El- Sakakini palace and the Geotechnical investigations.

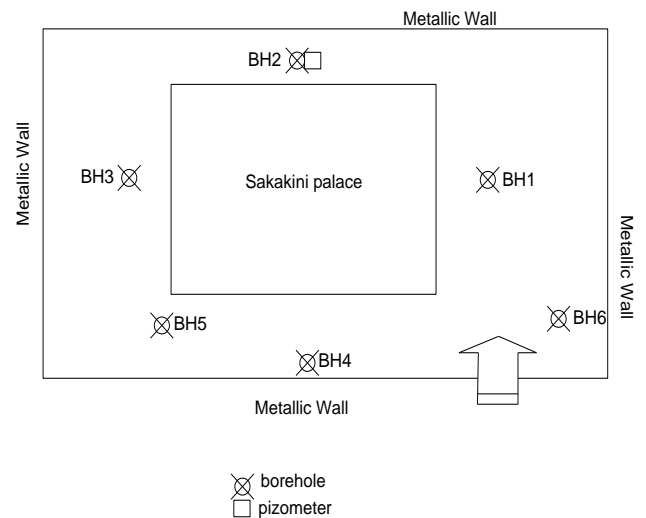


Fig. 6. General layout & boreholes locations.

project : existing . habib pasha elsakakeeny palace		file no : sakakeeny feb10	
location : eldaher-cairo		date commenced : jan . 15- 2012	
Boring. no : 1		date completed : jan . 18- 2012	
DRILL METHOD : MANUAL DRILLING		weather : cold	
drill fluid : none		ground level :	
driller : alaa amin drilling co		initial / final gwd : 2.30/1.20	

depth ( m )	legend	classification	end of layer (m)	qu	spt	yb	f.s.	wL	wP	RECOVERY	R.Q.D.
				( kg/ cm2)	n/30 cm	( um3)	( %)	( %)	( %)	( %)	( %)
1		fill( silty clay and limestone fragments . calc dark brown									
2											
3											
4				3.40	1.10						
5		fill( silty clay .medum u of limestone & red bock fragments .calc dark brown )	4.80	1.00							
6											
7		silty clay stiff calc dark brown	6.30	1.80							
8											
9		clayey silt . traces of fine sand & mica yellowsh dark brown	8.00								
9		more sand more silt	8.50	0.80				39.82	21	42	
10		silty sand fine traces of clay & mica dark brown	9.50								
11			11.00								
12		sand fine some silt traces of mica yellowish dark brown			21						
13											
14		sand fine to med u of silty clay dark brown	13.00								
14			14.00								
15		sand fine to medum traces of silt & mica of fine to medum gravel u of marine shells yellowish dark brown									
16			16.00								
17		sand fine traces of silt & mica yellowish dark brown			28						
18			18.00								
19		sand & gravel medum sand graded gravel u of silt yell dark brown									
20			20.00		33						
		end of drilling at 20.00m									

Fig. 7a. Geotechnical Borehole\_1, El Sakakini Palace.

project : existing . habib pasha elsakakeeny palace		file no : sakakeeny feb10									
location : eldaher-cairo		date commenced : May . 15- 2012									
Boring. no : 4		date completed : May . 18- 2012									
DRILL METHOD : MANUAL DRILLING		weather : cold									
drill fluid : none		ground level :									
driller : alaa amin drilling co		initial / final gwd : 1.10 m									
depth ( m )	legend	classification	end of layer (m)	qu (kg/ cm2)	spt n/30 cm	yb ( um3)	f.s. ( %)	wL ( %)	WP ( %)	RECOVERY ( %)	R.Q.D. ( %)
1		fill( limestone fragments concrete frag.sand&silt calc dark brown									
2		fill( silty clay .tr of limestone &red brick &pottery fragments .calc dark brown )									
3											
4			fill( silty clay .medum u of pottery fragments .calc dark brown )					51 75	23 95		
5											
6											
7				7.40							
8		clayey silt . traces of mica .dark brown		2.75							
9				2.00							
10				2.25							
11				2.20							
12				2.00					35 76	18 09	
13		clayer silty sand . fine . traces of rubble	12.10								
14											
15											
		dark brown silt clay with traces of fine sand			31						
		fine brown silt and sand with traces of clay &	14.00								
		end of drilling at 15.00m	15.00								

Fig. 7b. Geotechnical Borehole\_4, El Sakakini Palace.

## 4. GEOPHYSICAL CAMPAIGN

### 4.1 P-wave Refraction

A total of 10 seismic profiles are conducted at El Sakakini palace area (Figure 8). All profiles are carried out using 12 receivers, P-type geophones with 5m intervals and 2 shots. The forward and reverse shots were carried at a distance of 1 m at both ends. The seismic shots layouts are described in Table 1.

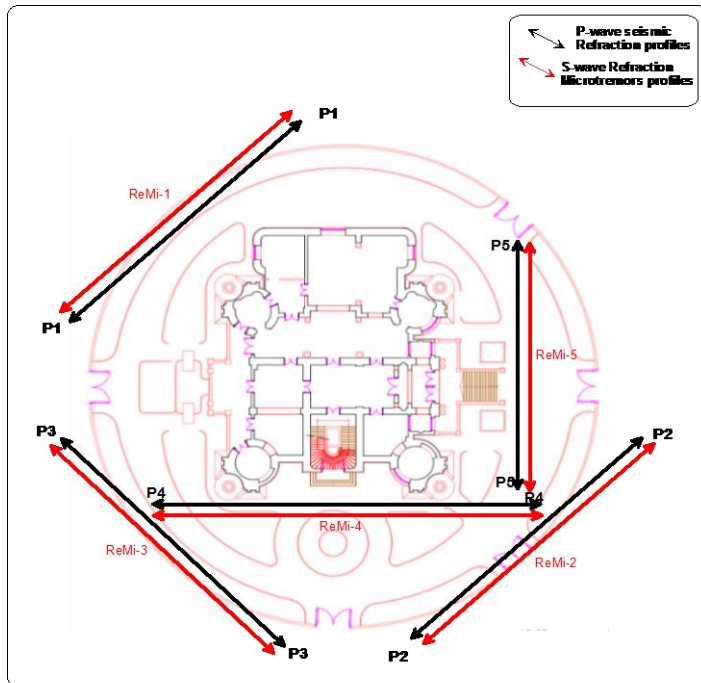


Fig. 8: Location of the P-wave seismic refraction, S-wave refraction and ReMi profiles conducted at El Sakakini Palace.

Table 1. Seismic shots.

Shot #	Name	Offset X (m) (relative to R1)
S2	Forward	-1
S4	Reverse	56

The conducted profiles are interpreted using time-term inversion method; an example of the conducted profiles and corresponding geoseismic model is shown in Figure 9. Table 2 summarizes the measured Vs values and the corresponding soil thicknesses. The soil stratification is not uniform and horizontal, as it should be expected for a filled area. However it is possible to distinguish the following three main layers: the soil layering can be summarized in the following (table 1).

**Soil A- Fill (<300 m/s):** A surface highly heterogeneous material (mainly man-made fill) with an average thickness of 10 m and an average velocity Vs lower than 300m/s. It is composed of very loose and low strength sediments such as

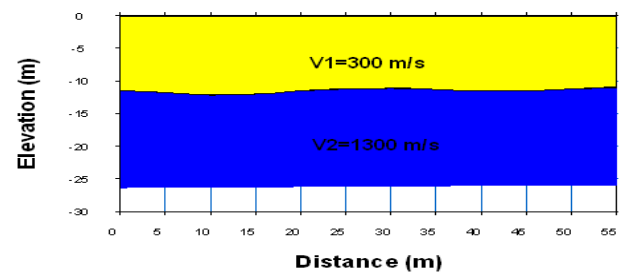
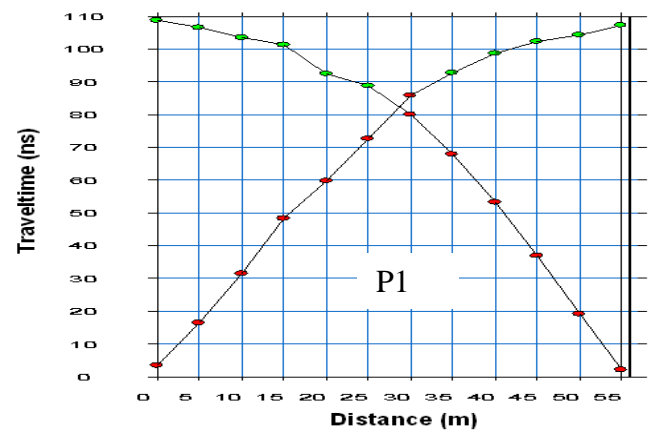
silt, clay and limestone [KP1]fragments. It is not found in all locations.

**Soil B-Clayey soil (400-600 m/s):** Below the surface layer (soil A) there is a clayey or silty clay layer with an average thickness of 10 m meters and Vs velocity 400-600 m/s.

**Soil C-Saturated Sand & Gravel (700-1300 m/s):** Below soil B there is a stiff soil layer with various thicknesses. it shows a considerable increase of Vp seismic velocity reaching sometimes values as high as 1300m/s. The soil is composed of compacted stiff saturated sand and gravel with an average Vs velocity equal or higher than 700m/s. It may be considered as the “seismic bedrock” for the local site amplification analyses.

Table 2: P-wave refraction geophysical campaign conducted at El-Sakakini palace area

Profile N°	Layer A	Layer B		Layer C	
	Velocity in m/s	Velocity in m/s	Depth (m)	Velocity in m/s	Depth in (m)
1		300	10	1300	25
2		600	16	900	32
3		400	9	700	20
4		400	14	1200	30
5	< 300	300	5	500	10





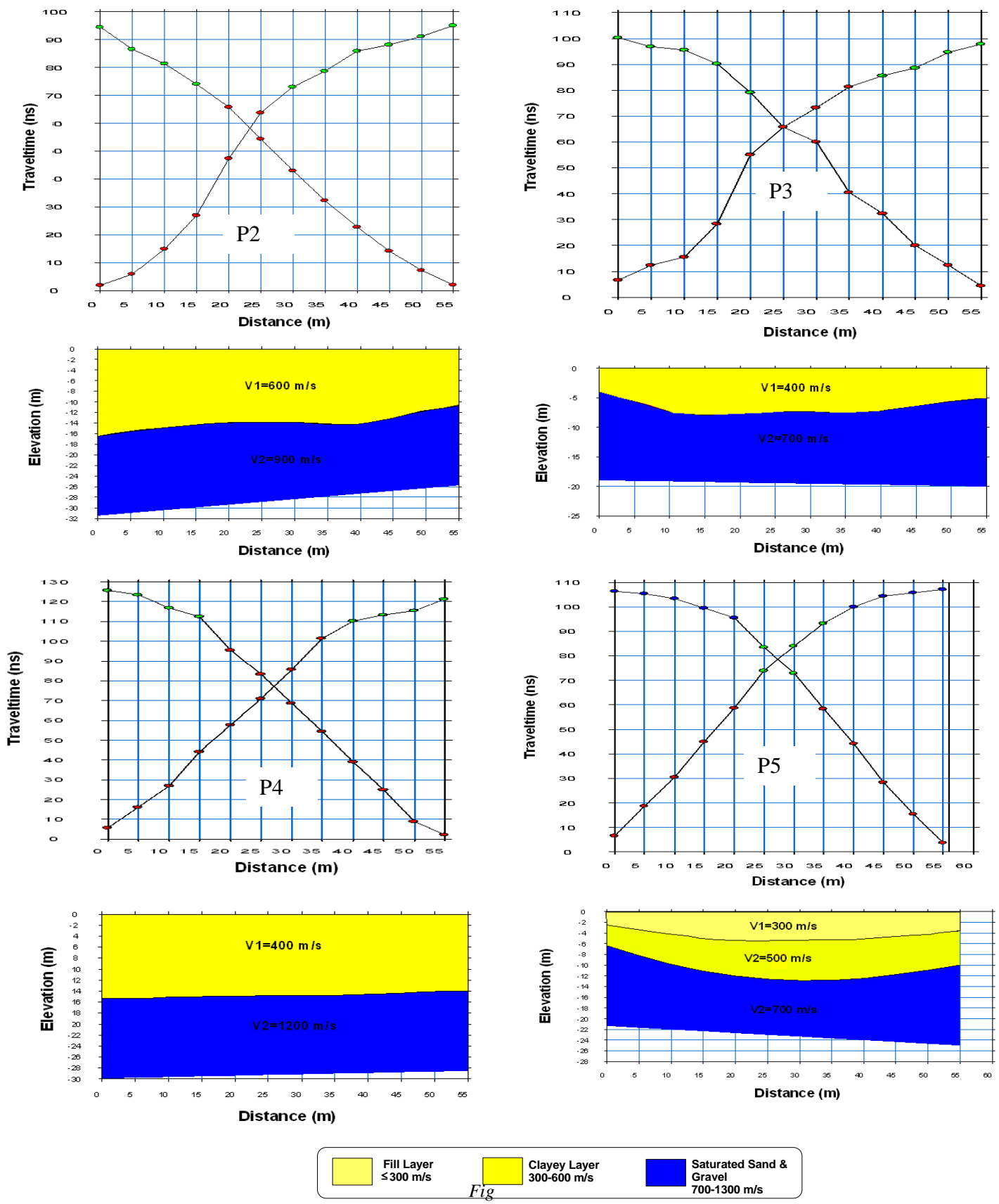


Fig. 9: P-wave travel time distance curve and its corresponding geoseismic model for profiles # P1-P5 (Figure 8).

## 4.2 Refraction- Microtremor (ReMi method)

We have used the ReMi (refraction microtremors) method to determine the S-wave seismic velocity with depth. The method is based on two fundamental ideas. The first is that common seismic-refraction recording equipment, set out in a way almost identical to shallow P-wave refraction surveys, can effectively record surface waves at frequencies as low as 2 Hz (even lower if low frequency phones are used). The second idea is that a simple, two-dimensional slowness-frequency (P-f) transform of a microtremors record can separate Rayleigh waves from other seismic arrivals, and allow recognition of true phase velocity against apparent velocities. Two essential factors that allow exploration equipment to record surface-wave velocity dispersion, with a minimum of field effort, are the use of a single geophone sensor at each channel, rather than a geophone “group array”, and the use of a linear spread of 12 or more geophone sensor channels. Single geophones are the most commonly available type, and are typically used for refraction rather than reflection surveying. There are certain advantages of ReMi method: it requires only standard refraction equipment, widely available, there is no need for a triggering source of energy and it works well in a seismically noisy urban setting. (Louie, 2001, Pullammanappallil et al. 2003).

A 12 channel ES-3000 seismograph was used to measure background ‘noise’ enhanced at quiet sites by inducing background noise with 14Hz geophones in a straight line spacing 5m Figure 5 shows the map were ReMi measurements were made. Almost all the sites were noisy. In particular big hammer used to break some rocks generated noisy background at El Sakakini Palace.30 files of 30sec records (unfiltered) of ‘noise’ were collected at each site. Five profiles were taken inside the Palace (Figure 9). Figure 10-11 shows an example of the dispersion curves and its P-F image (Remi Spectral ratio of surface waves) for refraction microtremors profile ReMi-1. The estimated average Vs for all profiles are shown in Figure 12.

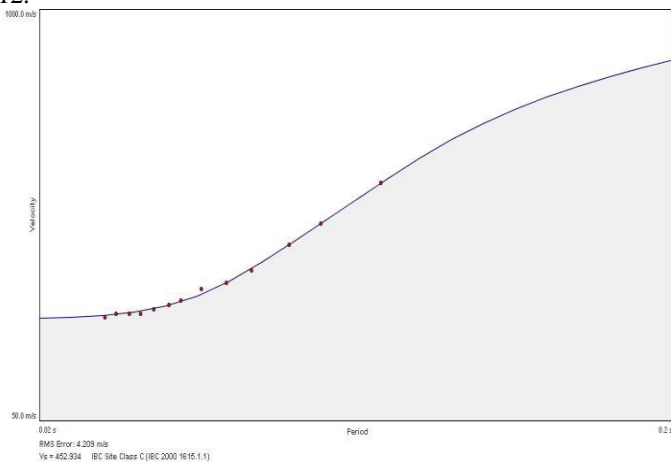


Fig. 10. Dispersion curve showing picks and fit for Profile ReMi-1

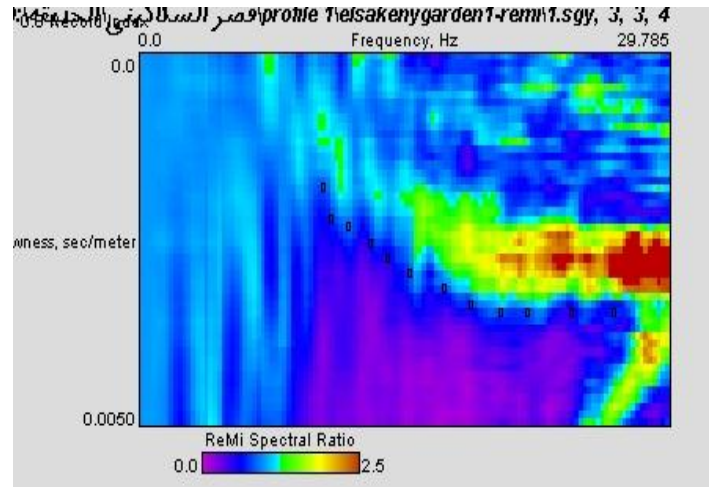


Fig. 11. P-F image with dispersion modeling picks for Profile ReMi-1



Figure 12. Shear wave velocity model calculated for refraction microtremors profiles ReMi-1 To ReMi-5 (Figure 9).

## 5-FREQUENCY CHARACTERISTICS OF THE SOIL AND THE BUILDING USING MICROTREMORS

Microtremors are omnipresent low amplitude oscillations (1-10 microns) that arise predominantly from oceanic, atmospheric, and urban or anthropogenic actions and disturbances. The implicit assumption of early studies was that microtremors spectra are flat and broadband before they enter the region of interest (soil or building). When microtremors enter preferable body it changes and resonate depending on the nature of the material, shape, and any other characteristics of this body.

It may be considered to compose of any of seismic wave types. We have two main types of microtremors, Local ambient noise coming from urban actions and disturbances and long period microtremors originated from distances (e.g. oceanic disturbances). There is still a debate ongoing on the characteristics of the ambient noise that should be used for site characterization and ground response. While some are using only the longer period microtremors originated from farther distances (e.g. Field et al, 1990), others considered that traffic and other urban noise sources are producing equally reliable results. In general low amplitude noise measurements comparable results give with strong motion data (Raptakis et al, 2005., Pitilakis, 2011., Apostolidis et al., 2004., Manakou et al, 2010., Mucciarelli, 1998).

Kanai 1957, first introduced the use of microtremors, or ambient seismic noise, to estimate the earthquake site response (soil amplification). After that lots of people followed this work but from the point of soil amplification of earthquake energy for different frequencies (e.g. Kanai and Tanaka 1961 and Kanai 1962, Kagami et al, 1982 and 1986; Rogers et al., 1984; Lermo et al., 1988; Celebi et al. 1987).

### 5.1 Instrumentation and Data Acquisition

A high dynamic range Seismograph (Geometrics ES-3000 see Figure 13) mobile station with triaxial force balance accelerometer (3 channels), orthogonally oriented was used. The station was used with 4Hz sensors to record the horizontal components in longitudinal and transverse directions in addition to the vertical components. For the data acquisition and processing we followed the following steps:

- Recording 10-min of ambient noise data using a mobile station moving among variable soil stations or El Sakakini building floors/

- Zero correction to the total 10-min noise at time domain
- Subdivision of each 10-min signal into fifteen 1-min sub-windows,

Each of these series was tapered with a 3-sec hanning taper and converted to the frequency domain using a Fast Fourier transform,

- Smoothing the amplitude spectrum by convolution with 0.2-Hz boxcar window,

- Site response spectrum for a given soil site (or certain floor) is given by dividing the average spectrum of this site over the

spectrum of the reference site. The reference site is chosen carefully in the site as deepest and calmest station in the basement floor with least soil response (usually we choose a certain basement floor location with least soil response to be used as reference site).

- Smoothing the final response curves by running average filter for better viewing. A complete description of the methodology can be found in Gamal and Ghoneim, (2004).

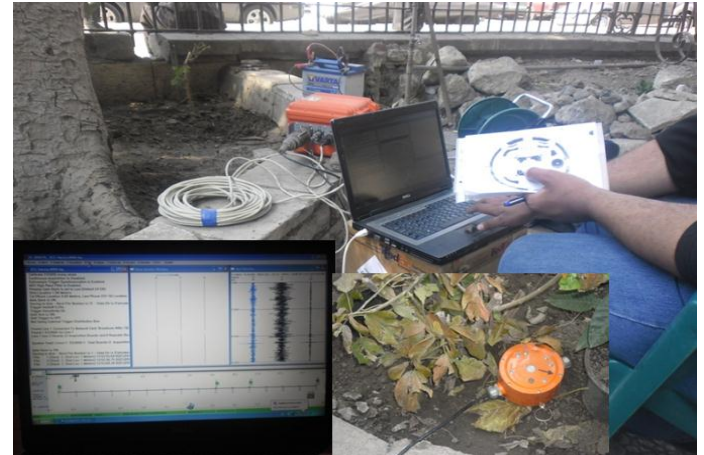


Fig. 13. High dynamic range ES-3000 Geometrics mobile station and triaxial geophone used 4 Hz to drive soil and structure response of El-Sakakini Palace.

### 5.2 Ground Response

Figure 14 shows the locations of microtremors stations used to determine the ground response at EL Sakakini Palace area. The predominant frequency of the ground at EL Sakakini Palace is about 3 Hz (see Figure 15 & Table 1), a value almost identical to the theoretical estimation according to Kennett and Kerry (1979) (Figure 16 & Table 4). The amplification factor is about 2, which is relatively low.

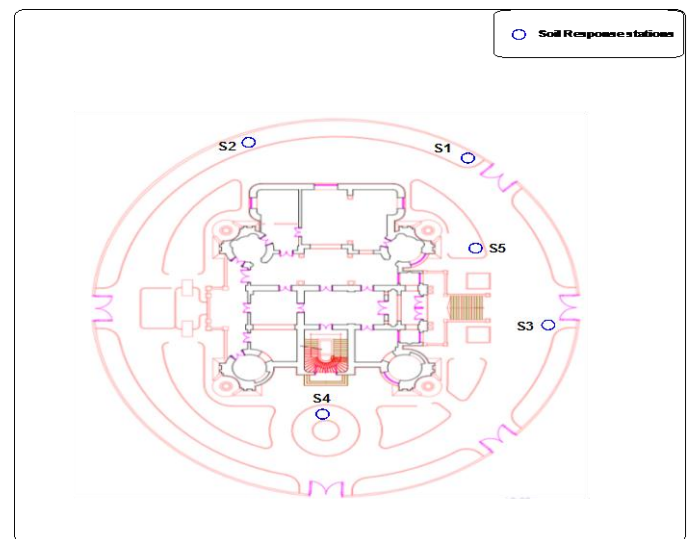


Fig. 14. Ambient noise measurement locations.

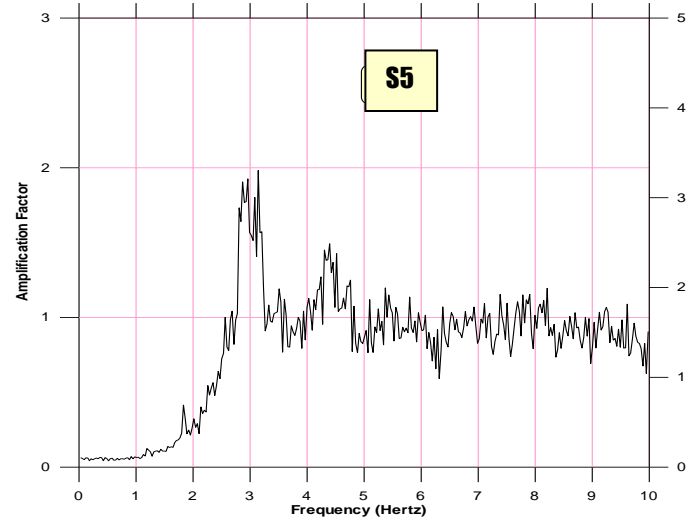
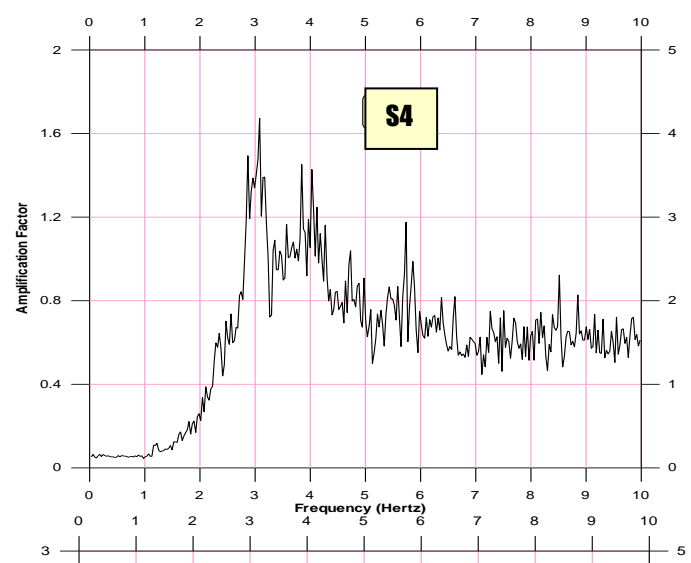
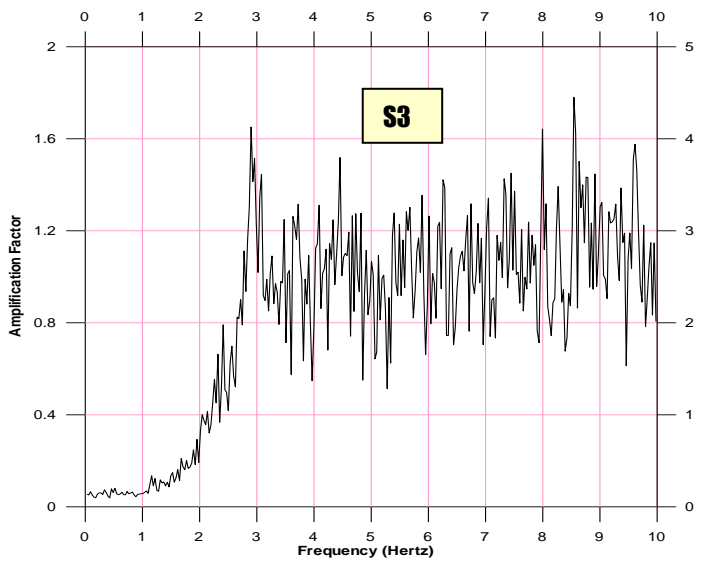
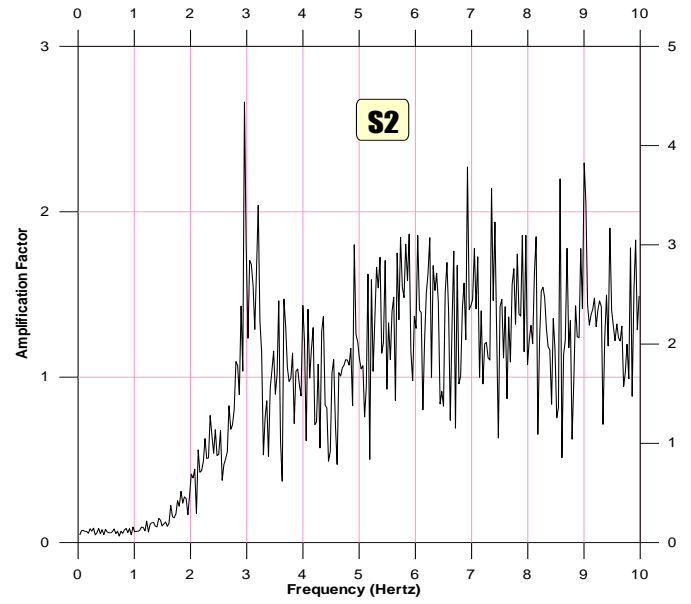
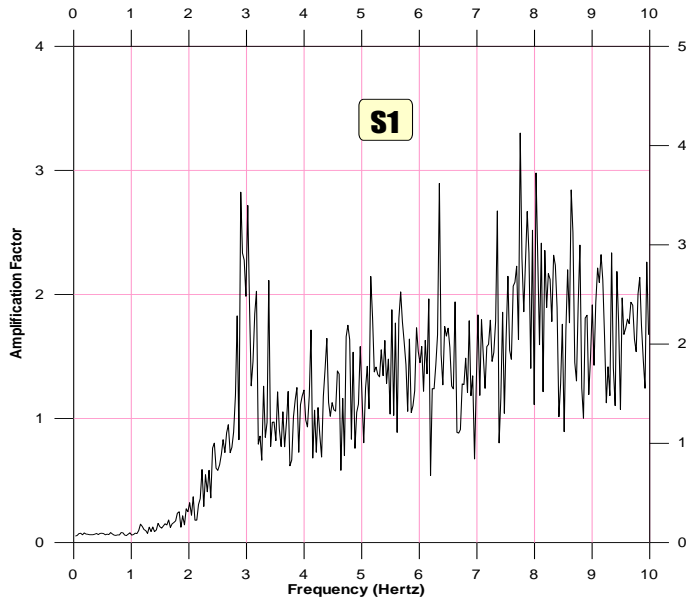


Fig. 15. Microtremors soil response for El Sakakini Palace Sites S1 to S5.

Table 3. Fundamental frequencies and amplification factors at five locations

Site	Fundamental frequency (Hz)	Amplification Factor
S1	3	2.5
S2	3.2	2
S3	3	1.6
S4	3	1.6
S5	3	2

Table 4. Parameters used for the Kennett and Kerry method (1979)

Thickness	P-wave velocity (m/s)	S-wave velocity (m/s)	Dry Density (gm/c.c)	Quality factor Qs
10	1300	315 (350?)	1.6	7
25	1300	500	1.7	15
>10.5	2000	700	2	100
	3000	1200	2.5	200

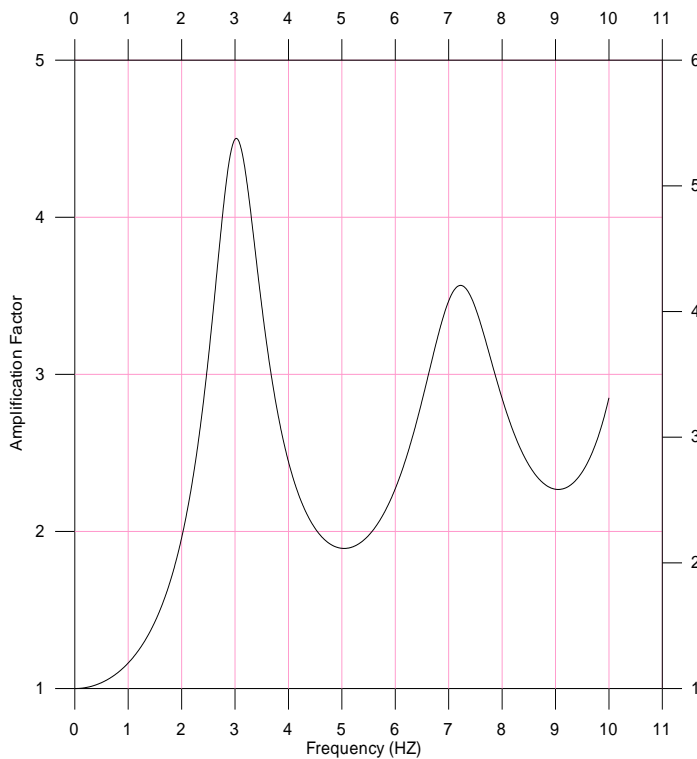


Fig. 16. Theoretical ground response analysis at EL Sakakini Palace using Kennett et al. (1979) method.

### 5.3 Building Response

The El Sakakini building is composed of a basement and five floors, the upper two being wooden. Figures 17 to 18 show some locations of recording stations used to drive El Sakakini building response. Figures 19 to 24 and Table 5 show the recorded natural frequency of vibration for each floor. All floors show nearly the same resonance frequency with the soil (3-4 HZ). The wooden floors (Figure 23 & 24) show very high amplification and multi peak as fundamental and other harmonics. The fundamental natural frequency of vibration is always the most important frequency that insert the maximum earthquake vibration energy into structure. However when we find other mode of vibrations with big amplification factors we consider this as a warning that this structure may suffer from vibration. This could be very good warning for its unstable performance during vibration.

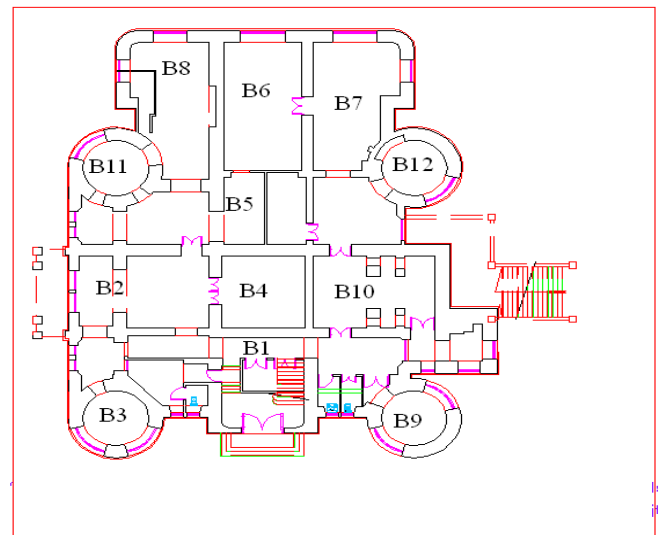


Fig. 17. Location of stations at the basement of EL-Sakakini Palace.

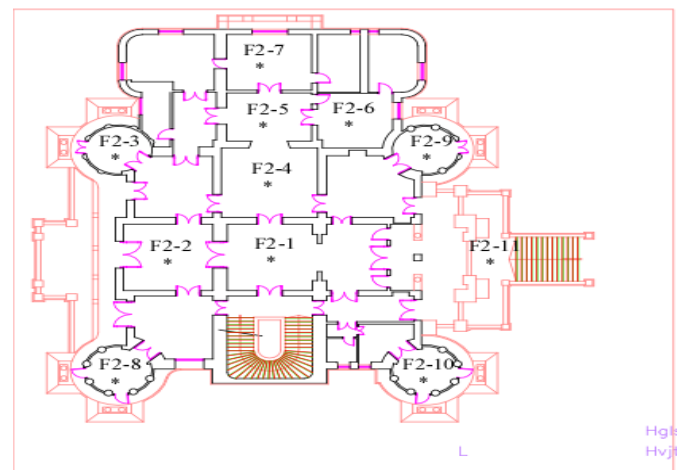


Fig. 18. Location of stations at 2nd floor of El-Sakakini Palace.

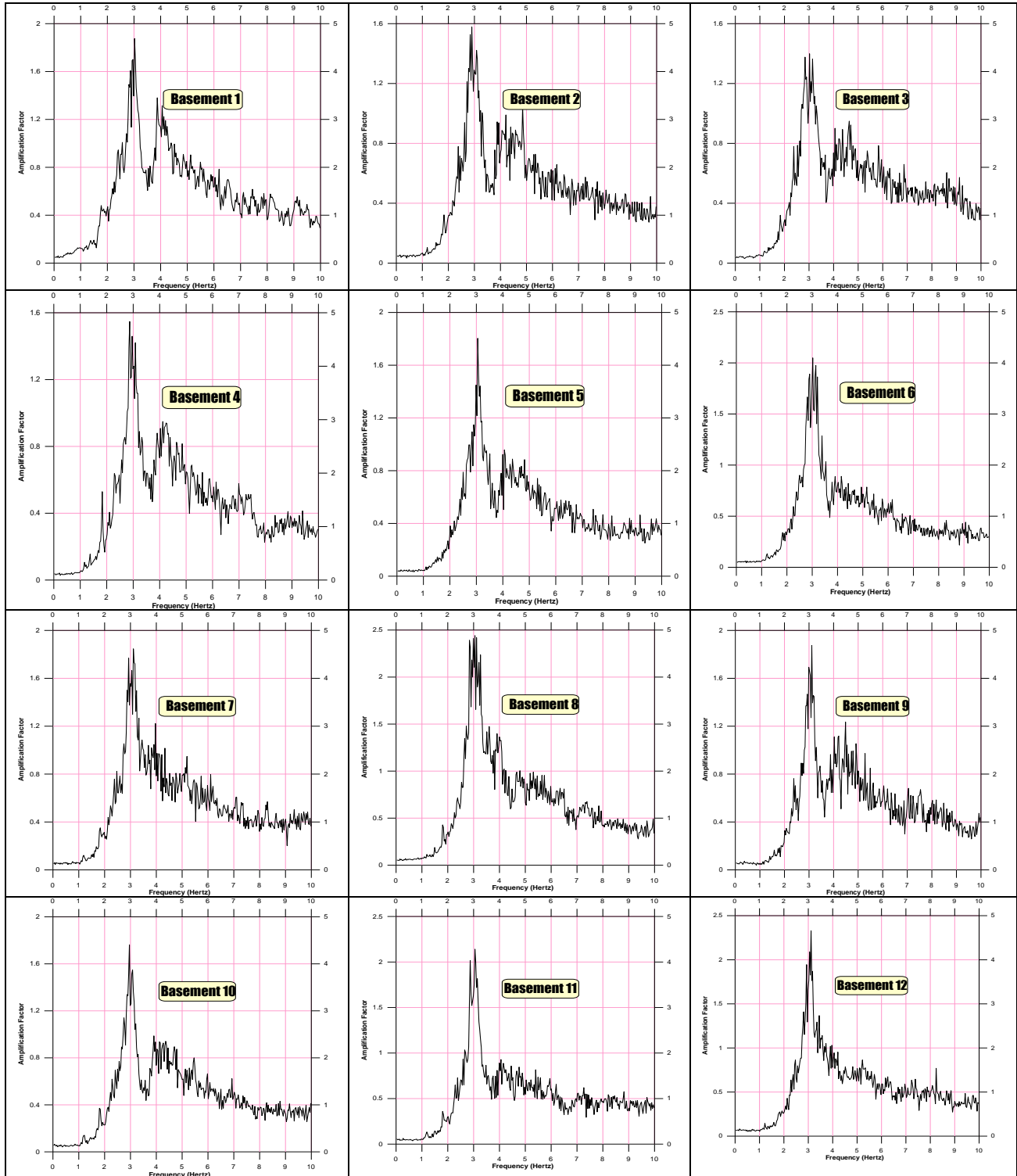


Fig. 19 Natural frequency of vibration for basement floor.

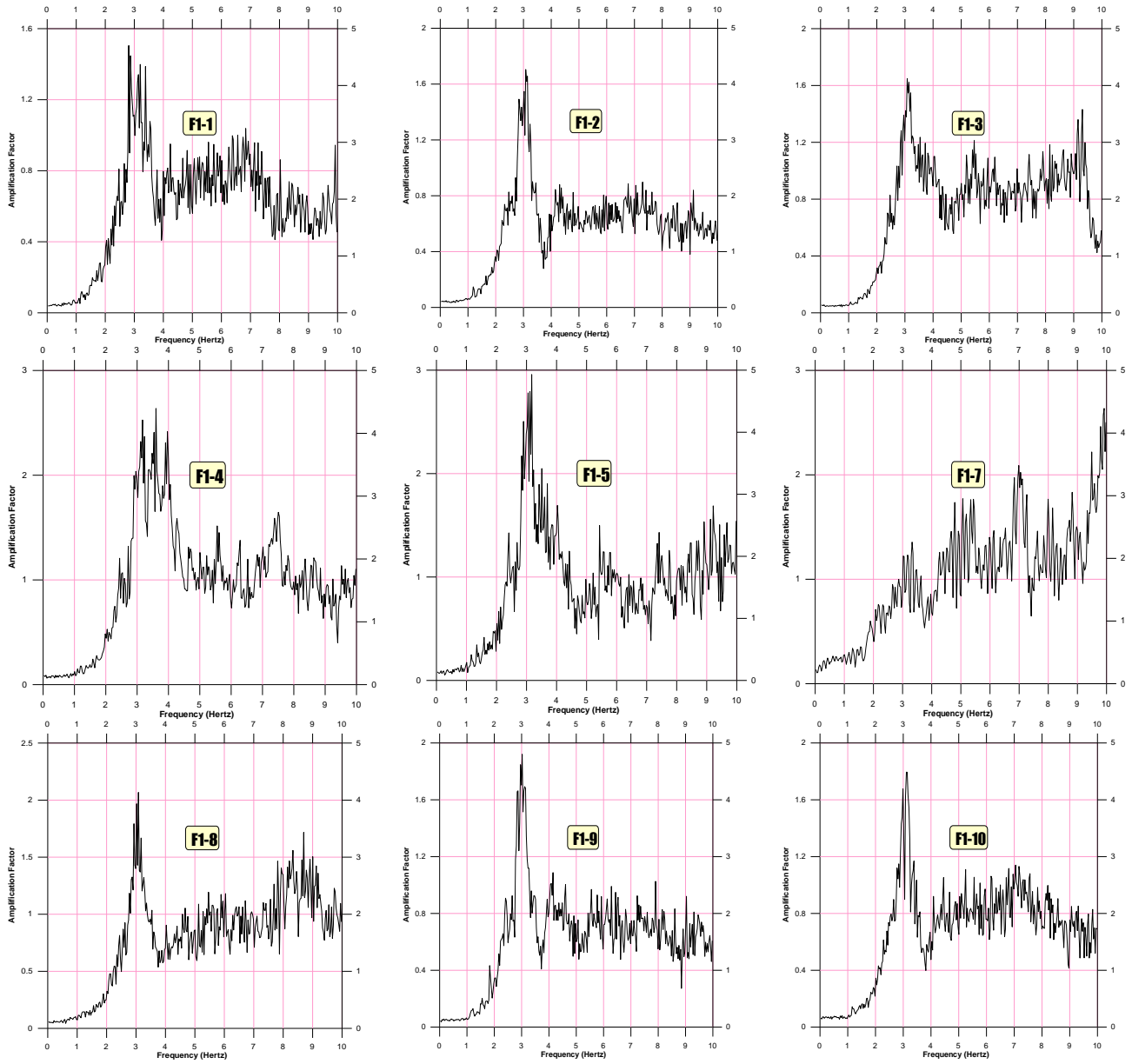


Fig. 20 Natural frequency of vibration for the 1<sup>st</sup> floor.

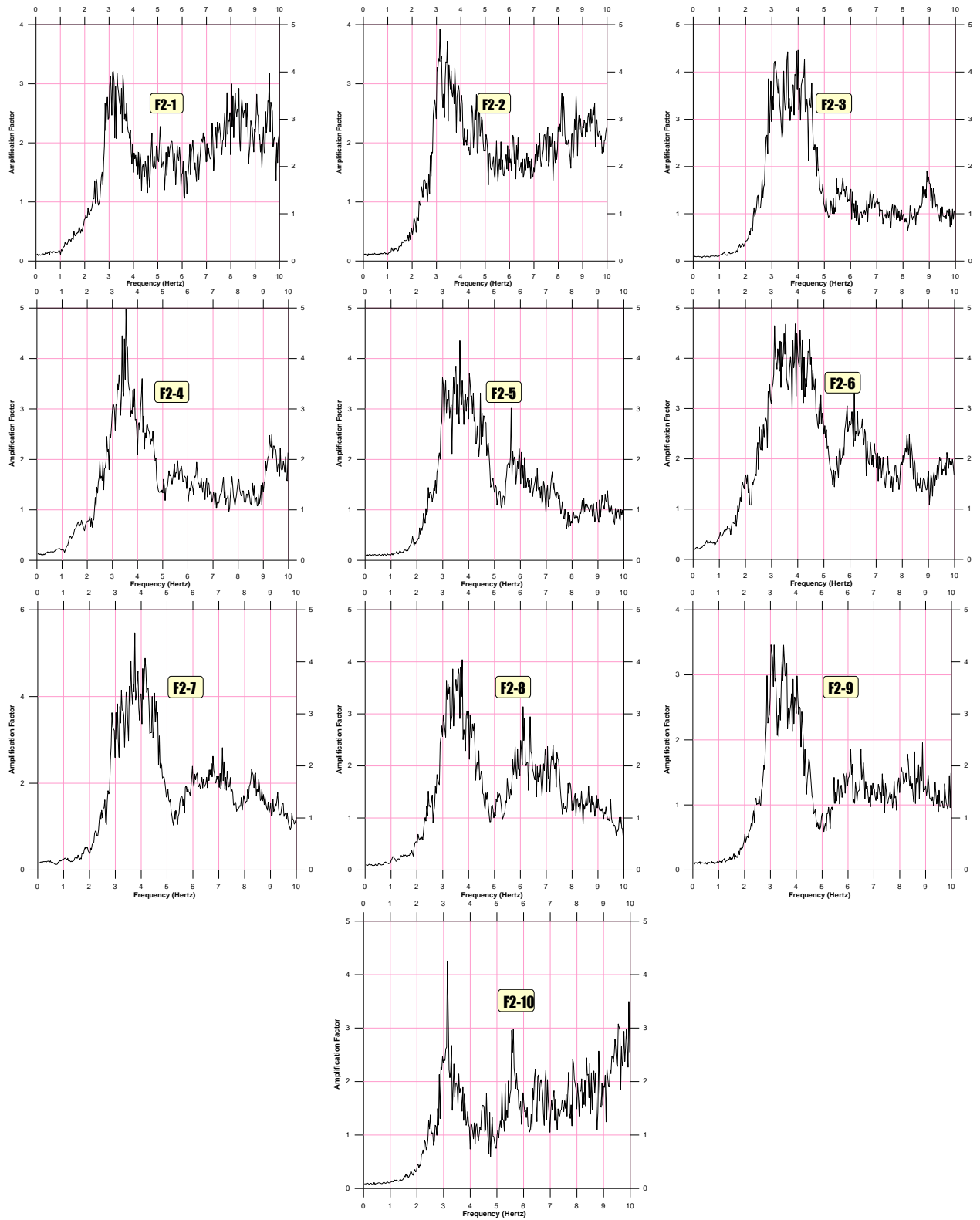


Fig. 21 Natural frequency of vibration for the 2nd floor.



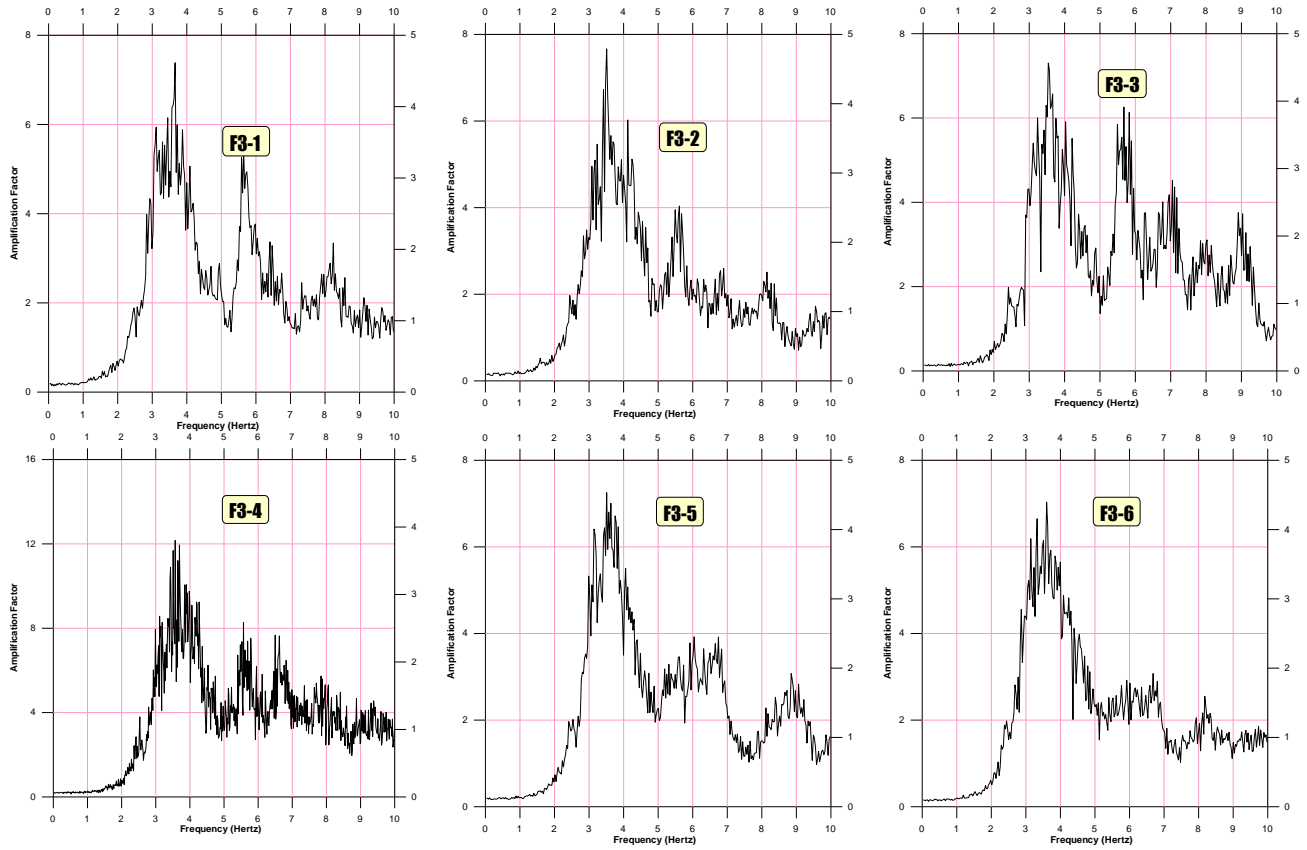


Fig. 22. Natural frequency of vibration for the 3<sup>rd</sup> floor.

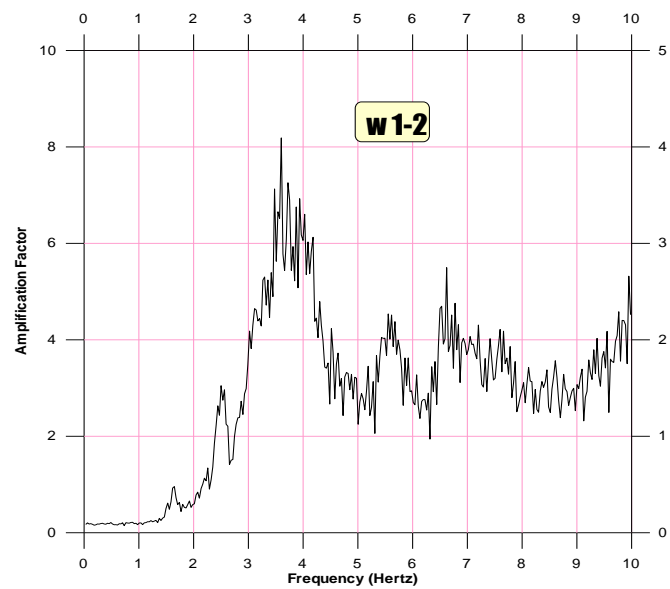
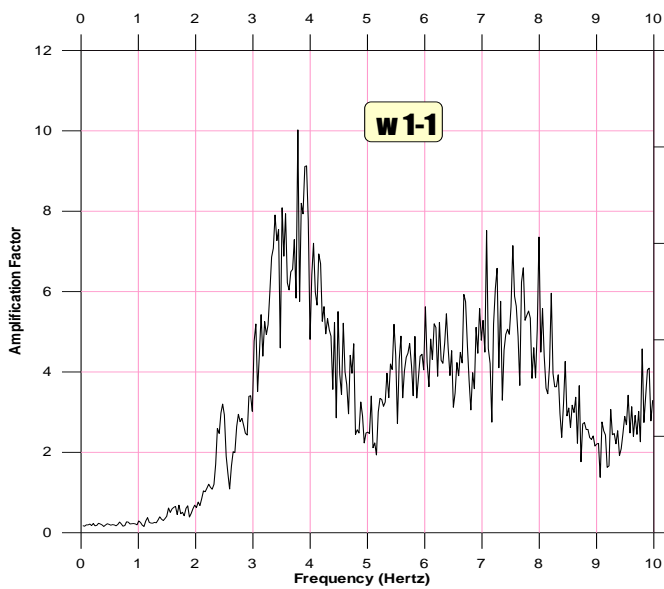


Fig. 23. Natural frequency of vibration of the 4<sup>th</sup> floor (wooden).

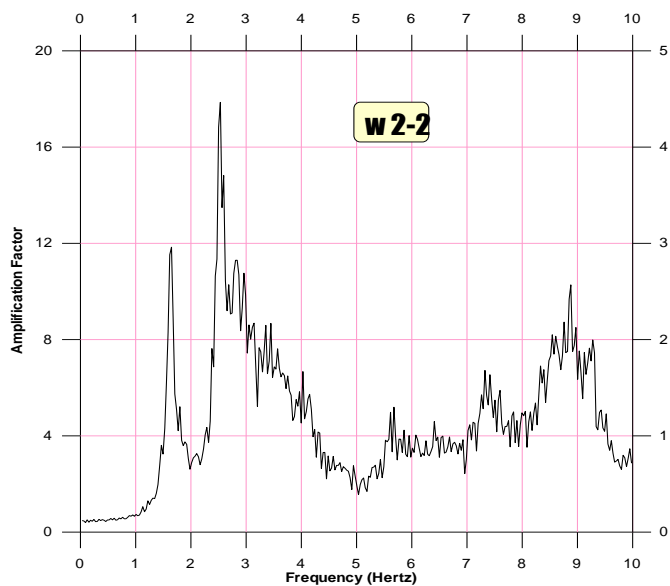
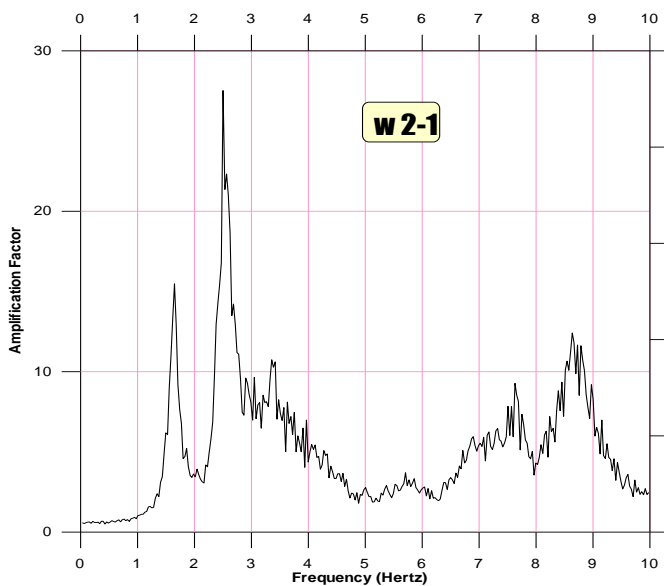


Fig. 24. Natural frequency of vibration of the 5<sup>th</sup> floor (wooden).

Table 5. Natural frequencies of vibration of El Sakakini Palace.

Floor	Fundamental resonance frequency (HZ)	Amplification Factor
Basement	3	1.3-2
1 <sup>st</sup> Floor	3-3.5	1.4-2.8
2 <sup>nd</sup> Floor	3-4	3-4.5
3 <sup>rd</sup> Floor	3-4.3	5.5-8
4 <sup>th</sup> wood Floor	3-4.5	7.5-8
5 <sup>th</sup> wood Floor	2.5	12-20

## CONCLUSIONS

El-Sakakini Palace is an important monument in Egypt. We presented the main results of the seismic hazard analysis and the geophysical campaign to estimate the main characteristics of the ground response and the structure. Based on the available maximum intensity maps for historical earthquakes (>2200BC) the maximum Mercalli Intensity expected at El-Sakakini Palace site is VII.

The peak horizontal acceleration at the seismic rock basement found at -35m approximately, and for 10% probability of

exceedance in 50 years is  $144 \text{ cm/sec}^2$  (0.147g), while for 100 years is  $186 \text{ (cm/sec}^2)$  (0.19 g). We determined the average soil profile using different geophysical campaigns. It is found that the upper layer has an average shear wave velocity lower than 300m/s and a thickness of 5 to 10meters. It is a man made fill material in rather loose conditions. Below there is a clayey material with average  $V_s$  velocity equal to 400-600m/s. At -35m in average we found saturated compacted sand and

gravels with  $V_s$  velocity exceeding 700m/s. It is considered as the seismic bedrock for the foreseen detailed site-specific analysis of the ground response.

Based on the ambient noise campaign the fundamental frequency of the ground is of the order of 3.0 to 3.5sec very close to the fundamental frequency of the palace. Resonance phenomena should be expected and considered seriously in the detailed analysis of the structure. There are strong evidences that the upper two stories with wooden floors, which are presenting high amplification factors, are subjected to several damages and degradation of their bearing capacity.

## REFERENCES

Apostolidis P., Raptakis D., Roumelioti Z., Pitilakis K., [2004]. Determination of S-Wave velocity structure using microtremors and SPAC method applied inThessaloniki (Greece). *Soil Dynamics & Earthquake Engineering*, 24, 1, 49-67.

Ben-Menahem, A., [1979]. *Earthquake catalogue for the Middle East (92 B. C. - 1980 A. D.)*: *BollettinodiGeofisicaTeoricaedApplicata*, 21, No. 84, 245 - 310

Castro, R. R., F. Pacor, A. Sala, and C. Petruogaro [1996]. S Wave attenuation and site effects in the region of Friull, Italy, *J. Geophysics. Res.* 101, 22355-22369.

Celebi, M., C. Dietel, J. Prince, M. Onate, and G. Chavez [1987]. Site amplification in Mexico City (determined from 19 September 1985 strong-motion records and from records of weak motion), in *Ground Motion and Engineering Seismology*, A. S. Cakmak (Editor), Elsevier, Amsterdam, 141-152.

Chopra, A. K. [1981]. *Dynamics of structures, a primer* Earthquake engineering research institute.

Chopra, A. K., (1995). "Dynamic of structures – Theory and Application to Earthquake Engineering", Englewood Cliffs, New Jersey.

Clayton, R. W., and McMechan, G. A., [1981]. Inversion of refraction data by wavefield continuation: *Geophysics*, v. 46, p. 860-868.

Egyptian Code. Egyptian code of Practice (ECP-1993) for

estimating loads and forces, 1993.

F. Nateghi-A, [1994]. *Seismic strengthening of a ten story steel framed hospital: Earthquake resistant Construction & design*, Savidis (ed.), Balkema, Rotterdam, ISBN 90 5410 392 2, P 849-856.

Field E. H., S. E. Hough, and H. Jacob [1990]. Using microtremors to assess potential earthquake site response, a case study in Flushing Meadows, New York city. *Bulletin of the Society of America*, Vol. 80. No. 6, pp. 1456-1480, December, 1990.

Gamal M. A. and Noufal A. [2006] A Neotectonics model AND seismic hazard assessment for Egypt, 8 th international conference on geology of the Arab world, Cairo university Egypt 13-16 2006.

Jordan Sesimoloical observatory [1998-2000], national resources authority geophysics and technical services, bulletin (1998-2000).

Joyner, W. B., and D. M. Boore, [1981], Peak horizontal acceleration and velocity from strong motion record including records from the 1979 Imperial Valley, California, earthquake, *Bull. Seism. Soc. Am.*, 17, 2011-2038.

Kagami, H., C. M. Duke, G. C. Liang, and Y. Ohta [1982]. Observation of 1-5 second microtremors and their application to earthquake engineering. Part II. Evaluation of site effect upon seismic wave amplification due to extremely deep soils., *Bull. Seism. Soc Am.* 72, 987-998.

Kagami, H., S. Okada, K. Shiono, M. Oner, M. Dravinski, and A.K. Mal [1986]. Observation of 1-5 seconds microtremors and their application to earthquake engineering. Part III. A two-dimensional of the site effect in San Fernando valley, *Bull. Seism. Soc. Am.* 76, 1801-1812.

Kanai, K. [1957]. The requisite conditions for predominant vibration of ground, *Bull. Earthq. Res. Inst.*, Tokyo University, 31, 457.

Kanai, K. [1962]. On the spectrum of strong earthquake motions, *Primeras J. ArgentinasIng.Antisismica* 24, 1.

Kanai, K. and Tanaka [1961]. On microtremors. VII, *Bull. Earthq. Res. Inst.*, Tokyo Univ., 39, 97-115.

Langston, C. A. [1977]. Corvallis, Oregon, Crustal and upper mantle receiver structure from teleseismic P and S waves, *Bull. Seism. Soc. Am.* 67, 713-724.

Lermo, J. and F. J. Chavez-Garcia, [1993]. Site effect evaluation using spectral ratios with only one station, *Bull. Seism. Soc. Am.* 83, 1574-1594.

Lermo, J., M. Rodriguez, and S. K. Singh [1988]. The Mexico Earthquake of September 19, 1985: Natural periods of sites in the valley of Mexico from microtremors measurements and from

strong motion data, *Earthquake Spectra* 4, 805-814.

Louie, J. N., [2001]. Faster, Better: Shear-wave velocity to 100 meters depth from refraction microtremors arrays: *Bulletin of the Seismological Society of America*, v. 91, p. 347-364.

Maamoun, M., [1979]. Macroseismic observations of principal earthquake in Egypt, Helwan Institute of Astronomy and Geophysics, *Bulletin* 183, 120.

Maamoun, M., A. Megehed, and A. Allam, [1984]. Seismicity of Egypt, *Institute of Astronomy and Geophysics* 4.

Makropoulos, K. C., and P. W. Burton, [1981]. A catalogue of Seismicity in Greece and adjacent areas. *Geophys. J. R. Astr. Soc.* 65, 741 - 762.

Manakou M., Raptakis D., Apostolidis P., Chávez-García F. J., Pitilakis K., [2010]. 3d soil structure of the Mygdonian basin for site response analysis, *Soil Dynamics and Earthquake Engineering*, vol. 30, pp. 1198-1211

McGuire, R.K., [1993]. FORTRAN computer program for seismic risk analysis. *U.S. Geol. Surv.*

Miller, R. D., Park, C. B., Ivanov, J. M., Xia, J., Laflen, D. R., and Gratton, C., [2000]. MASW to investigate anomalous near-surface materials at the Indian Refinery in Lawrenceville, Illinois: *Kansas Geol. Surv. Open-File Rept.* 2000-4, Lawrence, Kansas, 48 pp.

Mohamed A. Gamal, A. Noufal and E. Ghoneim, [2006]. A Neotectonics model and seismic hazard assessment for Egypt. 8th international conference of geology of the Arab world, 13-16 Feb. 2006 Cairo University Giza, Egypt.

Mucciarelli M., [1998]. Reliability and applicability of Nakamura's technique using microtremors: an experimental approach, *Journal of Earthquake Engineering*, Vol.2, No.4 625-638 Imperial college press.

Nakamura, Y. [1989]. A method for dynamic characteristic estimation of subsurface using microtremors on the ground surface. *Q. R. Railway tech. Res. Inst. Rept.* 30, 25-33.

NEIC, [1973-2006]. Preliminary determination of Epicenters, monthly listing, U.S. Department of the interior/ Geological survey, National Earthquake information center.

Nogoshi, M. and T. Igarashi [1970]. On the propagation characteristics of microtremors, *J. Seism. Soc. Jpn.* 23, 264-280.

Pitilakis K., Anastasiadis A., Kakderi K., Manakou M.,

Manou D., Alexoudi M., Fotopoulou S., Argyroudis S., Senetakis K., [2011]. "Development of comprehensive earthquake loss scenarios for a Greek and a Turkish city: Seismic hazard, Geotechnical and Lifeline Aspects", *Earthquakes and Structures*, Vol. 2, No 3, September 2011.

Pullammanappallil, S., Honjas, B., Louie, J., Siemens, J. A., and Miura, H., [2003]. Comparative study of the refraction microtremors method: Using seismic noise and standard P-wave refraction equipment for deriving 1D shear-wave profiles, *Proceedings of the 6th SEGJ International Symposium (January 2003, Tokyo)*, 192-197.

Raptakis D., Manakou M., Chavez-Garcia F., Makra K., Pitilakis K., [2005]. 3D configuration of Mygdonian basin and preliminary estimate of its site response, *Soil Dynamics and Earthquake Engineering*, 25, 871-887.

Riad, S., and H. Meyers, [1985]. Earthquake catalog for the Middle East countries 1900 - 1983. *World Data Center*.

Rogers, A. M., R. D. Borcherdt, P. A. Covington, and D. M. Perkins [1984]. A comparative ground response study near Los Angeles using recordings of Nevada nuclear tests and the 1971 San Fernando earthquake, *Bull. Seism. Soc. Am.* 74, 1925-1949.

Shapira, A., [1994]. *Seismological Bulletin of Israel*. 1900 - 1994.

Thorson, J. R., and Claerbout, J. F., [1985]. Velocity-stack and slant-stack stochastic inversion: *Geophysics*, v. 50, p. 2727-2741.

Uniform Building Code [UBC,1985]. International Conference of building officials whittier, California.

Wilson, E.L, and Habiballah, A [1990]. "SAP2000, Structural Analysis Programe" computer and structures Inc., Berkeley, California.