

## Georgia Southern University Digital Commons@Georgia Southern

---

Environmental Health Sciences Faculty  
Publications

Environmental Health Sciences, Department of

---

2011

# Anaplasmatataceae as Human Pathogens : Biology, Ecology and Epidemiology

Marina E. Ereemeeva

Georgia Southern University, [meremeeva@georgiasouthern.edu](mailto:meremeeva@georgiasouthern.edu)

Gregory A. Dasch

Centers for Disease Control and Prevention, [gdasch@cdc.gov](mailto:gdasch@cdc.gov)

Follow this and additional works at: <https://digitalcommons.georgiasouthern.edu/environ-health-facpubs>

 Part of the [Environmental Health Commons](#), [Environmental Health and Protection Commons](#), and the [Environmental Public Health Commons](#)

---

### Recommended Citation

Ereemeeva, Marina E., Gregory A. Dasch. 2011. "Anaplasmatataceae as Human Pathogens : Biology, Ecology and Epidemiology." *Revue Tunisienne d'Infectiologie, Intracellular Bacteria: From Biology to Clinic*, 5 (S1): S7-S14: *Revue Tunisienne d'Infectiologie*. source: [http://www.rev-tun-infectiologie.org/detail\\_art.php?id\\_det=32](http://www.rev-tun-infectiologie.org/detail_art.php?id_det=32)  
<https://digitalcommons.georgiasouthern.edu/environ-health-facpubs/57>

This conference proceeding is brought to you for free and open access by the Environmental Health Sciences, Department of at Digital Commons@Georgia Southern. It has been accepted for inclusion in Environmental Health Sciences Faculty Publications by an authorized administrator of Digital Commons@Georgia Southern. For more information, please contact [digitalcommons@georgiasouthern.edu](mailto:digitalcommons@georgiasouthern.edu).

## ANAPLASMATACEAE AS HUMAN PATHOGENS : BIOLOGY, ECOLOGY AND EPIDEMIOLOGY

Marina E. Ereemeeva<sup>1</sup>, Ali Bouattour<sup>2</sup>

- 1- Rickettsial Zoonoses Branch, Division of Vector-borne Diseases, Centers for Disease Control and Prevention, Atlanta. USA
- 2- Veterinary laboratory of Microbiology, Medical Entomology Department, Pasteur Institute of Tunis. Tunisia

### Correspondance :

Dr. Marina E. Ereemeeva  
1600 Clifton Road, NE  
Mail Stop G-13  
Atlanta GA 30333  
E-mail: MEreemeeva@cdc.gov

### Abstract:

This review describes the biology, ecology, and epidemiology of known human pathogens in the family Anaplasmataceae that are transmitted by ticks and belong to the genus *Anaplasma* and genus *Ehrlichia*. We discuss the current status of diagnosis and surveillance of the diseases they cause, and address the challenges and new perspectives raised due to continuous recognition of new emerging human pathogens in the family Anaplasmataceae.

**Key words :** *Anaplasma phagocytophilum*, *Ehrlichia chaffeensis*, anaplasmosis, ehrlichiosis, tick-borne diseases.

## INTRODUCTION

The family Anaplasmataceae is comprised of increasingly numerous genera of obligate intracellular Gram negative alphaproteobacteria. The current description of the family was formally proposed in 2001 based on their nucleotide sequence similarity, phenotypic and eco-biological features [1]. These invertebrate-transmitted bacteria possess specialized and diverse evolutionary adaptations that allow them to parasitize a variety of mammalian cells of hematopoietic and bone marrow origin or endothelium. Different species of Anaplasmataceae cause a number of pathological conditions in humans and animals with clinical manifestations ranging from asymptomatic chronic persistence to acute illness and life threatening diseases. Both the veterinary pathogens and the invertebrate pathogens of the family Anaplasmataceae have been discussed elsewhere in several outstanding reviews [2-8]. In this review, we highlight the biology, ecology, and epidemiology of known human pathogens in the Anaplasmataceae that are transmitted by ticks and belong to the genus *Anaplasma* and genus *Ehrlichia*, and discuss the difficulties and challenges of diagnosis and surveillance of the diseases they cause. Finally, we describe several newly emerging human pathogens in the family Anaplasmataceae.

## TAXONOMY AND PRIMARY CELL ASSOCIATIONS

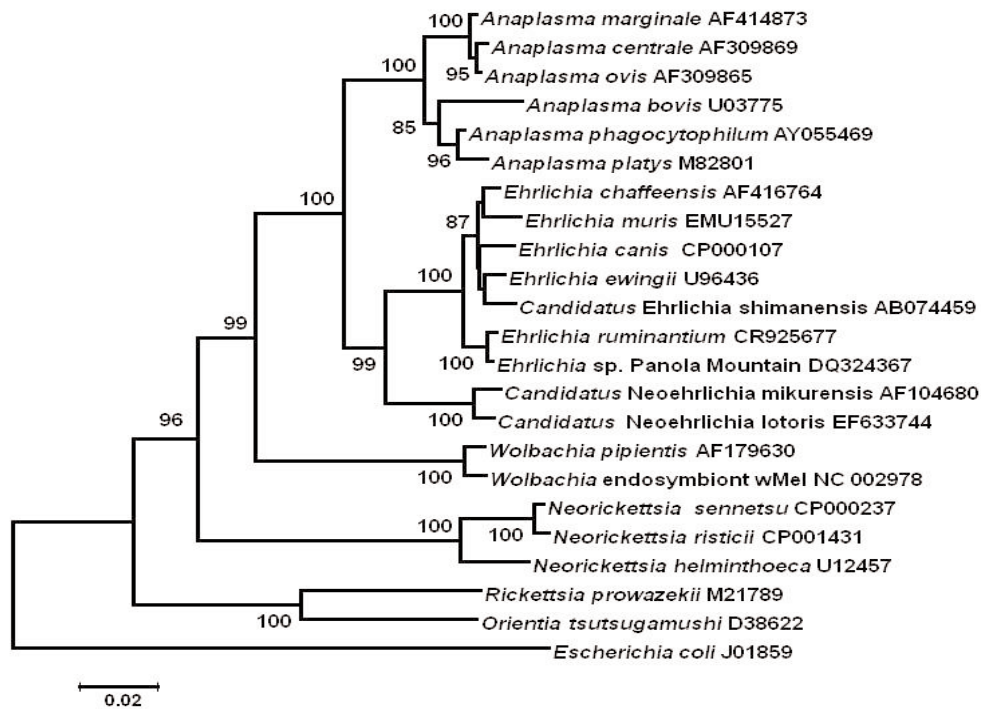
Dumler et al. 2001 described and defined four genera, *Anaplasma*, *Ehrlichia*, *Neorickettsia* and *Wolbachia* in the family Anaplasmataceae while several other genotypes were recognized as potential members that might comprise a new genus [1]. Only the first three genera contain both pathogenic and non-pathogenic species found in associations with different mammals. Bergey's Systematic Bacteriology added the genus *Aegyptianella* to the family Anaplasmataceae [9]. More recently, the genus *Neoehrlichia* was proposed; it currently consists of two *Candidatus* species, *Candidatus Neoehrlichia mikurensis* and *Candidatus Neoehrlichia lotoris* (Figure 1) [10, 11].

The genus *Anaplasma* includes five species of veterinary significance only, *Anaplasma marginale*, *A. bovis*, *A. centrale*, *A. ovis*, and *A. platys*. While *A. phagocytophilum* was long recognized for its detrimental impact on ruminants as the etiological agent of tick-borne fever, it is also responsible for causing illness in humans, horses and dogs (Table 1). *Anaplasma phagocytophilum* infects circulating white blood cells of different mammals, *A. platys* targets platelets, and *Anaplasma marginale*, *A. bovis*, *A. ovis*, and *A. centrale* each have unique adaptations for infecting mammalian red blood cells [1, 9]. *Aegyptianella pullorum* is most closely related to

the genus *Anaplasma*; it is also a tick-transmitted bacterium but infects and replicates only in avian red blood cells [12]. The genus *Ehrlichia* includes several species that appear to be pathogenic for both humans and animals, *Ehrlichia* (formerly *Cowdria*) *ruminantium*, *E. canis*, *E. chaffeensis*, *E. ewingii*, and *E. muris* (Table 1), and a number of propagated or molecular isolates whose pathogenic potential or taxonomic status are not yet defined. *Ehrlichia ruminantium* infects primarily endothelial cells; *E. canis*, *E. chaffeensis* and *E. muris* invade

## BIOLOGY AND HOST CELL INTERACTIONS

*Anaplasma* and *Ehrlichia* grow as clusters of small cocci or pleomorphic coccobacilli in the cytoplasm of neutrophils, granulocytes or monocytes [16, 17]. Within infected cells *Anaplasma* and *Ehrlichia* reside inside intracytoplasmic vacuoles where they form micro-colonies called morulae and multiply by binary fission. The bacteria have a Gram-negative cell wall ultra-structure; however, they do not stain well with



**Figure 1 :** Genetic relationships of different representatives of the family Anaplasmataceae based on their 16S rRNA gene sequences. The sequences of *Rickettsia*, *Orientia* and *Escherichia coli* were used as out-groups. Scale bar correspond to the number of nucleotide substitutions per site, number at each branch is the GenBank accession number.

and multiply in monocytes and macrophages, while *E. ewingii* grows in granulocytes and neutrophils.

The genus *Neorickettsia* includes *Neorickettsia sennetsu* (formerly called *Ehrlichia sennetsu*), *N. helminthoeca* and *N. risticii* (formerly *E. risticii*); these three agents are found in association either with flukes, trematodes, snails or metacercaria-containing aquatic insects [13, 14]. In humans or animals infected by ingestion of infested flukes, contaminated fish, or insects *Neorickettsia* grows within monocytes and macrophages.

In contrast, the members of the genus *Wolbachia* are found widely in a tremendous variety of arthropods, including insects, mites, termites, ticks, spiders, isopods and crustaceans and in filarial nematodes [15]. *Wolbachia pipientis* is the only current species formally designated within the genus *Wolbachia* although there are at least six distinct bushy clades of these diverse bacteria. In invertebrate hosts, *Wolbachia* infection is often associated with alteration of host reproduction through killing of male embryos, feminization of genetic males, induction of parthenogenesis or cytoplasmic incompatibility. In nematodes, *Wolbachia* is found in a mutualistic symbiotic relationship.

The Gram stain and are better visualized using Wright or Giemsa staining. The poor retention of safronin is likely due to other unusual characteristics of *Anaplasma* and *Ehrlichia*. Their cell wall lacks lipopolysaccharide (LPS) and peptidoglycan and it is rich in cholesterol acquired from the host cell [16-18]. The bacteria are pleomorphic with their length ranging from 0.2 to 2.0  $\mu$ m; they can be detected in two morphologically distinct forms, dense-cored cells and reticulate cells, most frequently seen in cultured cells, but they can also be observed in infected blood and tick midgut cells [16, 19-22].

Invasion and survival strategies are most well studied for *Anaplasma marginale*, *A. phagocytophilum* and *Ehrlichia chaffeensis*; however, more attention has been paid recently to other members of these genera as well [23-25]. Bacteria invade their target cells by binding to surface proteins (such as selectins) that are often glycosylated, and they are internalized within the endosomes via receptor-mediated endocytosis that is regulated by cyclic di-GMP signaling [23, 26-28]. Endosomes containing live bacteria are modified to avoid fusion with lysosomal vesicles and do not form mature acidified phagolysosomes. Replicative intracellular inclusions of *E. chaffeensis* are early endosomes that do not mature into late

**Table 1 :** Characteristic features of Anaplasmataceae pathogenic for humans

Species	Veterinary Disease	Human Disease	Target cell	Primary Vector	Reservoir	Geography	Genome Size, bp
<i>Anaplasma phagocytophilum</i>	Tick-borne fever, Equine anaplasmosis, Canine anaplasmosis	Human anaplasmosis	Neutrophils, granulocytes	Ticks, <i>Ixodes</i> spp.	Small to middle and large mammals	Worldwide	1,471,282
<i>Ehrlichia chaffeensis</i>	Canine monocytic ehrlichiosis	Human monocytic ehrlichiosis	Monocytes, macrophages	Tick, <i>Amblyomma americanum</i>	Small rodents, cervids, canids	Primary in western hemisphere	1,005,812 1,176,248
<i>Ehrlichia ewingii</i>	Canine ehrlichiosis	Ewingii ehrlichiosis	Granulocytes, neutrophils	Tick, <i>Amblyomma americanum</i>	Small rodents, cervids, dogs	Western hemisphere	Not determined
<i>Ehrlichia muris</i>	Murine monocytic ehrlichiosis	Human monocytic ehrlichiosis	Monocytes, macrophages	Ticks, <i>Ixodes</i> spp.	Rodents, deer	Eurasia, North-western USA	In progress
<i>Ehrlichia canis</i>	Canine monocytic ehrlichiosis	Human monocytic ehrlichiosis	Monocytes, macrophages	Tick, <i>Rhipicephalus sanguineus</i>	Dogs, canids	Worldwide	1,315,030
<i>Ehrlichia ruminantium</i>	Heartwater	Unnamed disease	Endothelium, monocytes, macrophages	Tick, <i>Amblyomma variegatum</i> , <i>A. hebraeum</i>	Cattle, sheep, goat	Africa and West Indies	1,499,920- 1,516,355
<i>Ehrlichia</i> sp. Panola Mountain agent	Unnamed disease	Unnamed disease	Not determined	Tick, <i>Amblyomma americanum</i>	Deer	United States, West Indies	Not determined
<i>Candidatus Neoehrlichia mikurensis</i>	Yes	Unnamed disease	Endothelium	Tick, <i>Ixodes</i> spp.	Rodents	Eurasia	Not determined
<i>Neorickettsia sennetsu</i>	Unknown	Sennetsu ehrlichiosis	Macrophages	Trematode	Trematode	Asia	859,006

endosomes; they are often surrounded by mitochondria and appear to inhibit mitochondrial activity [29, 30]. In contrast, *A. phagocytophilum* replicative inclusions are more characteristic of autophagosomal pathway and do not exhibit endosomal markers [31]. These processes are manipulated by bacterial protein synthesis and result in repression of NADPH oxidase and scavenging of superoxide and peroxide radical in the case of *A. phagocytophilum*, or selective accumulation of transferrin receptors induced by *E. chaffeensis*. Due to a highly orchestrated inhibition of host cell apoptosis, intracellular *A. phagocytophilum* and *E. chaffeensis* are able to exploit intracellular nutrients and to divide until the host cell bursts to liberate bacteria which then spread and infect other white blood cells [32]. The details of exit mechanisms have been recently described for *E. chaffeensis* and *E. muris* [33]. Actin-mediated formation of filopodia by infected macrophages may be crucial for targeted delivery of *Ehrlichia* to neighboring cells, another effective adaptation for successful survival and evasion of host immune systems by these bacteria.

#### GENOME AND GENETIC CHARACTERISTICS

Complete genome sequences have been obtained for most species of the family Anaplasmataceae, including *Neorickettsia* spp. and *A. phagocytophilum*, as well as several isolates each of *A. marginale*, *E. chaffeensis*, *E. ruminantium*, *E. canis* and *Wolbachia* spp. (table 1); furthermore, sequencing of the *E. muris* genome is in the last phase of its completion [34-37]. All

of these genomes consist of a single circular chromosome, which is largely syntenic in *A. phagocytophilum* and *E. chaffeensis*, and are of a relatively small size and coding capacity compared to most free-living bacteria. Members of the family Anaplasmataceae share a number of genes whose homologues are also found in other bacteria, while many of their unique genes encode proteins of unknown functions and are found only in that particular organism. Genomes of *Anaplasma* or *Ehrlichia* spp. encode only 1,100 to 1,300 proteins [34]. Comparative analyses reveal irreversible loss of numerous metabolic pathways including those for synthesis of at least a dozen amino acids and many metabolites which must be acquired from host cell pools. Genomes of *A. phagocytophilum* and *Ehrlichia* spp. also lack the genes for enzymes involved in glucose utilization (consistent with the observation that these bacteria cannot utilize glucose as a source of carbon energy) and do not contain genes that are required for the biosynthesis of lipopolysaccharide and peptidoglycan. On the other hand, being aerobic bacteria, *Anaplasma* and *Ehrlichia* possess conserved sets of genes enabling pyruvate catabolism, and a complete tricarboxylic acid cycle and electron transport chain. *Anaplasma* and *Ehrlichia* also have genes for the biosynthesis of nucleotides and most vitamins and cofactors, including FAD, NAD, CoA, biotin, folate, thiamine and protohaem.

Genomes of *Anaplasma* and *Ehrlichia* spp. encode proteins of the type four secretion apparatus (T4SS) and two-component systems which are differentially expressed during host cell

entry and intracellular development; many genes encoding T4SS proteins are duplicated. Several genes encode proteins containing tandem repeats (TRP32, TRP47 and TRP120 proteins in *E. chaffeensis*) and ankyrin domains (AnkA) which are associated with host cell interactions and are often referred to as virulence factors for these bacteria.

## SURFACE PROTEINS AND THEIR FUNCTIONS

The presence and expansion of genes encoding proteins belonging to the outer membrane species-specific super-family is another unique feature of bacteria of the family Anaplasmataceae. Differential expression of the major surface proteins, particularly proteins in the OMP1/MSP2/P44-P28 super-family, is the characteristic of *Anaplasma* and *Ehrlichia* [34, 35, 38]. In *A. phagocytophilum*, 3 copies of omp1, 1 copy of msp2, 2 copies of msp2 homologues, one of msp4, and 113 loci of p44 have been identified [34]. It is believed that P44 plays a central role in binding of *A. phagocytophilum* to the surface of neutrophils and granulocytes. It has been suggested, that continuing recombination of the multiple genetic copies of p44 at a single expression site may be responsible for P44 antigenic diversity and evasion of host immune responses by *A. phagocytophilum* infecting human, horses and sheep (reviewed in [32]). Furthermore, diverse P44 genes are expressed during different developmental stages of *I. scapularis* and in mice, and in different types of experimentally infected cells, suggesting that variable antigenic environmental adaptation occurs in *A. phagocytophilum*. It appears that among the diverse antigenic variants of P44, specific genetic loci associated with expression in human, canine or equine host can be identified [39]; divergence of p44 sequences of the Ap-1 variant has been clearly demonstrated [40]. The latter observation is particularly important since Ap-1 variants of *A. phagocytophilum* are found exclusively in tick and deer while other genetic variants that are associated with human illness are found in ticks and wild mice [20, 41]. Similarly, *A. phagocytophilum* strains circulating in California exhibit significant genetic diversity and unique host adaptations demonstrated by the susceptibility of wood-rats to strains of different origin, and such wood-rat strains do not cause clinical illness in horses [42].

In *E. chaffeensis*, 22 copies of OMP1/P28 genes are found, while its homologue in *E. canis* has 25 copies [34]. Significant genetic variations in p28 have been described among *E. chaffeensis* isolates by several investigators [43-45]. Differential expression of P28 has also been described in infected animals, macrophages and tick cell cultures; however, it is not yet demonstrated if a recombination mechanism is responsible for selective adaptation to eukaryotic hosts as has been described for *A. phagocytophilum* [46, 47]. Other *Ehrlichia*, including *E. canis*, *E. ewingii*, and *E. ruminantium*, possess genomic loci with similarly arranged sets of genes encoding for variably-expressed outer membrane surface proteins [46, 48, 49]. Recent observations also indicate that P44-P28 proteins can function as porins [50].

## ECOLOGY AND NATURAL HISTORY

*Anaplasma* and *Ehrlichia* spp. are tick-borne agents with a world-wide distribution. *Anaplasma phagocytophilum* is maintained in zoonotic cycles between infected mammalian host reservoirs and ticks of the *Ixodes ricinus/persulcatus* complex. In the USA it is found in *Ixodes scapularis* in the eastern and mid-western states, and *I. spinipalpis* and *I.*

*pacificus* in mountain and western coastal areas, respectively [51]. *Ixodes ricinus*, *I. persulcatus* and *I. ovatus* are the primary vectors transmitting *A. phagocytophilum* in Europe and Asia [7, 52, 53]. Other nidicolous species of *Ixodes* ticks were found to be PCR positive for *A. phagocytophilum* I [54, 55]; however, the role of these ticks in the natural maintenance cycle and transmission of *A. phagocytophilum* need further evaluation as many of them are not known to feed on humans. In North Africa (Morocco, Algeria and Tunisia), *I. ricinus* is the main vector but *Hyalomma detritum* may also play a role in transmitting *A. phagocytophilum* to cattle [56, 57]. Furthermore, *A. phagocytophilum* is likely to circulate in a variety of ticks feeding on dogs or reptiles as observed in Tunisia, South Africa and Ghana [57-59]. A report from Israel indicates that *A. phagocytophilum* can be also detected in other ticks, such as *H. marginatum*, *Rhipicephalus turanicus* and *Boophilus kohlsi* feeding on large animals [60]. Many species of domestic and wild animals are important reservoirs of *A. phagocytophilum*. Beside cattle, sheep, horses and dogs, potential reservoirs include small rodents, shrews, bears, opossums, rabbits, cervids, foxes, raccoons, wild boars, squirrels and lizards [7, 61]. The white-footed mouse, *Peromyscus leucopus*, is the primary mammalian reservoir for *A. phagocytophilum* variants pathogenic for humans in the USA [62, 63].

Both *Ehrlichia chaffeensis* and *E. ewingii* are mainly transmitted by the lone star tick, *Amblyomma americanum* in North America [64]. However, DNA of *E. chaffeensis* has also been detected in different parts of the world in association with *D. variabilis* and *I. pacificus* in the USA, *I. ricinus* and *I. persulcatus* in Russia, *A. testudinarium* and *Haemaphysalis yeni* in China, *H. longicornis* in South Korea and *Rh. sanguineus* in Cameroon [65, 66]. However, whether any of these tick species serve as competent vectors and amplification hosts or this simply represents detection of *ehrlichial* DNA that has been passively acquired in blood meals from infected host animals needs further determination. The white-tailed deer is the primary host for *A. americanum* and a natural reservoir of *E. chaffeensis* in America [67]. Dogs are highly susceptible to *E. chaffeensis* and can establish a persistent infection; however, coyotes and raccoons are thought to be important natural reservoirs of *E. chaffeensis* in the USA. Other mammals and tick species may be responsible for its maintenance in nature elsewhere [68]. Some reports have implicated migratory birds as potential vehicles for dissemination of ticks infected with *ehrlichiae*. Molecular evidence for *E. ewingii* outside the USA has been only reported in Cameroonian *Rh. sanguineus* and dogs and in a dog from Brazil [66, 69].

Because Anaplasmataceae are rarely and inefficiently passed transovarially in ticks, it is commonly accepted that perpetuation of *Anaplasma* and *Ehrlichia* primarily depends on chronic persistence in mammalian reservoirs and horizontal transmission between ticks and animals during every generation of ticks [70-72]. Immature ticks acquire *Anaplasma* and *Ehrlichia* while feeding on bacteremic animals and then the ticks efficiently pass bacteria transstadially to the next life stage which then can transmit to a naive mammalian host.

As humans are infected with *Anaplasma* and *Ehrlichia* by ticks, the geography of human cases overlaps the known endemic areas of infected ticks and their animal hosts. Most cases are diagnosed during the spring to early summer or fall months and this correlates with the biological cycles of feeding of overwintering infected adult ticks and nymphs infected as larvae. Human anaplasmosis and ehrlichioses have been

reportable in the USA since the early days of their recognition (1987-1993) possibly due to the significant mortality and morbidity observed in the first recognized cases [73]. Passively collected surveillance data show a steadily increasing trend in the number of annual cases which has reached 1,026 cases of human granulocytic anaplasmosis (HGA) and 1,137 cases of human monocytic ehrlichiosis (HME) in 2008 but no associated increases in the rates of mortality due to effective recognition and treatment of most cases [74]. Furthermore, it is probable that the actual incidence and distribution of diseases is significantly greater than that reported in passive surveillance data.

Outside the USA, human anaplasmosis has recently become formally reportable only in China; therefore extrapolations regarding the incidence and prevalence of anaplasmosis and ehrlichioses in other regions of the world depend upon a limited number of laboratory-confirmed cases and the geographically restricted serosurveys reported in the literature [75-79]. Based on this information HGA appear to be infrequent infection in most countries. The temporal distribution and demographic characteristics of the populations infected are similar in the USA and other countries.

Rarely infections with *A. phagocytophilum* may also occur through blood transfusion and organ transplantation, and nosocomial and perinatal transmission [80-82]. Inhalation of aerosolized blood has been implicated as another route of infectious exposure to *A. phagocytophilum* [83].

#### CLINICAL DISEASE, DIAGNOSIS AND TREATMENT

Human anaplasmosis and ehrlichioses are acute illnesses that occur 5 to 21 days (average 10 days) after the bite of an infected tick [63, 73, 84]. The severity ranges from asymptomatic seroconversion to a mild or severe febrile illness to multisystem organ failure in the case of human monocytic ehrlichiosis. The triad of fever ( $>101.0^{\circ}\text{F}/38.0^{\circ}\text{C}$ ), headache and myalgia are the most common clinical manifestations. Other symptoms include nausea, vomiting, abdominal pain, diarrhea, arthralgias and respiratory symptoms. Involvement of the central nervous system is variable being reported in 2 to 29% of patients suffering with HME; however it is rare during the course of HGA [84-86]. Rash is not typically associated with anaplasmosis; however, published data indicate that it is observed in children suffering from HME and may appear in 17 to 67% of diagnosed cases [87, 88]. Basic laboratory findings include thrombocytopenia, leucopenia, and moderately increased concentrations of hepatic alanine and aspartate aminotransferases and lactic dehydrogenase without increase of bilirubin; elevation of the C-reactive protein concentration is typical for HGA patients [87-89].

Fatalities due to *A. phagocytophilum* infections are rare (0.7%) and typically arise from complicating opportunistic viral or fungal infections, advanced age, immunosuppression, or severe preexisting medical conditions [63, 84]. Furthermore, it has been suggested that elevated blood cholesterol levels may also increase the severity of this infection [90]. Many of HGA patients in the USA are hospitalized, and some of those require treatment in an intensive care unit [63, 84]. The overall case-fatality rate is 2-3% in patients infected with *E. chaffeensis*; life-threatening complications and death are most frequent in patients who are immune-compromised and elderly people [91-93]. It was originally believed that patients with underlying immunodeficiency are at primary risk of acquiring *E. ewingii* ehrlichiosis; however, immune-competent individuals can

experience the disease with similar course and clinical manifestations [94]. The clinical features of HGA outside the USA are harder to assess because of the limited number of reported cases; however, it is typically described as a low morbidity illness [76, 95]. Similarly, *E. chaffeensis* is rarely implicated as an etiological agent outside the USA. Indeed, suspected cases of HME may be due to infections caused by *E. muris* or antigenically related agents but mistakenly interpreted as *E. chaffeensis* ehrlichiosis due to their serologic cross-reactivity [96].

Accurate diagnosis of anaplasmosis and ehrlichioses requires laboratory confirmation that should be attempted during the acute stage of illness to avoid possible subsequent clinical complications [92, 97-99]. Presumptive etiological diagnosis can be established by detection of morulae within the cytoplasmic vacuoles in peripheral blood neutrophils or monocytes. Confirmatory diagnosis requires immunohistochemical demonstration of bacteria in tissues or peripheral blood, or sequence confirmed PCR detection of bacterial nucleic acids in peripheral blood. Serologic detection of immunoglobulin G (IgG) and IgM antibodies reactive with *A. phagocytophilum* or *E. chaffeensis* and a 4-fold titer increase between acute and convalescent serum allows only retrospective diagnosis of exposure because of the time required for this seroconversion. Similarly, culture isolation from the peripheral blood in a suitable cell culture system allows definitive confirmation; however, its retrospective character limits its practical utility in clinical practice. Each method has its benefits and disadvantages, and guidance for their use has been discussed in detail by several authors [97, 99, 100]. A combination of results obtained using different acute tests increases the probability of accurate diagnosis of anaplasmosis and the ehrlichioses thus benefiting proper patient management and timely recovery. Retrospective confirmation is essential for improved discrimination of its acute differential clinical diagnosis particularly when PCR diagnosis is not available. However, species-specific serologic confirmatory testing is not available for *E. ewingii* due to the lack of an established isolate.

For optimal diagnostic results with tests performed during the acute stage of illness, samples must be collected prior to the initiation of antibiotic therapy and no later than 24-48 hr after appropriate treatment has begun. Common requirements for laboratory confirmed and probable cases of human granulocytic anaplasmosis and ehrlichioses and their applicability to surveillance of these diseases are described by the USA Council of State and Territorial Epidemiologists (<http://www.cste.org/ps2009/09-ID-15.pdf>). In Europe, similar case definitions and recommendations were developed by the European Society of Clinical Microbiology and Infectious Diseases study group for Coxiella, Anaplasma, Rickettsia and Bartonella (ESCAR-ESCMID) and European Network for Surveillance of Tick-Borne Diseases [101].

Doxycycline is the primary drug of choice for therapeutic treatment of anaplasmosis and ehrlichioses in all categories of patients [73]. These recommendations are primarily based on in vitro antibiotic susceptibility testing and empirical retrospective clinical data. Antibiotic treatment should be continued for 7 to 10 days (for at least 3 to 5 days after defervescence); however, the optimal duration of therapy has not been determined yet. There are limited data on successful use of rifampin in pediatric patients and pregnant women. Unfortunately, the effectiveness of rifampin therapy or other antibiotic regimens for treatment of anaplasmosis and

ehrlichioses have not been evaluated in controlled prospective studies (reviewed in [102]). Use of sulfa-containing drugs is responsible for severe forms of illness; likely due to unknown interactions beyond the established in vitro resistance of *A. phagocytophilum* and *E. chaffeensis* to cotrimoxazole [103, 104]. Anaplasma and *Ehrlichia* are also resistant to beta-lactams, macrolides and ketolides [103].

## EMERGING PATHOGENS

Anaplasma and *Ehrlichia* emerged as human pathogens in the late 1980s and early 1990s. The resultant increased attention given to all bacteria in the family Anaplasmataceae and the diseases they cause, the continuous alert mounted by the medical community, extended surveillance of wildlife, and development of novel diagnostic tools has resulted in expansion of the number of known human pathogens in the last several years [73, 101, 105]. This trend has coincided with an increasing incidence of other tick-borne diseases and the recognition of new emerging tick-borne etiological agents [79, 105, 106]. At least four new species from the family Anaplasmataceae have been implicated as causes of human illness in different geographic regions. *Ehrlichia canis* has been recognized as the etiologic agent of canine monocytic ehrlichiosis since 1935, and it occurs worldwide. Recently, human cases due to *E. canis* with positive PCR identification were reported in Venezuela; these cases were all associated with dog handling [107]. The variant of *E. canis* implicated as the human etiologic agent appears to be genetically different from the type strain of *E. canis* typically causing canine illness. Furthermore, the patients did not mount any significant antibody response as typically observed for human or canine monocytic ehrlichiosis.

*Ehrlichia muris* and related *Ehrlichia* agents found in Ixodes ticks from Japan and Russia have been long referred to as likely etiological causes of murine ehrlichiosis [108-111]. PCR diagnosis has sporadically implicated *E. muris* as a cause of febrile illness in Russian patients [96, 112], and more recently, a genetically similar *Ehrlichia* sp. has been found to infect people in the Mid-Western USA states [113], a region which is one of the two primary USA areas endemic for human granulocytic anaplasmosis. These findings suggest that human ehrlichiosis due to *E. muris* may occur widely in Eurasia, since this *ehrlichia* is found in ticks and animals from Slovakia to China and Japan [114, 115]. Similarly, 1-2% of healthy donors in Japan were seropositive to *E. muris* or an antigenically related bacterium; while 10% of febrile patients from the Perm region of Russia, an endemic area of *I. persulcatus* had antibodies reactive with *E. chaffeensis* antigen [96, 116].

Another enigmatic *Ehrlichia* sp. was originally found in *I. ricinus* ticks from the Netherlands and referred to as Schotti variant. Later it was described as a novel genus and species, *Candidatus Neoehrlichia mikurensis* and first isolated from a rodent [10]. Different genetic types of this microorganism have been identified in European and Asian populations of ticks based on its GroEL gene sequence [117]. Three independent 2010 publications from Germany, Sweden and Switzerland diagnosed severe illness due to this agent by PCR in 10 patients [117-119]. In contrast to the characteristic clinical manifestations and clinical findings of HGA or HME, these patients experienced severe coagulative disorder and thrombosis likely due to involvement of the endothelium affected by invasion, growth and spread of this *Neoehrlichia*. Finally, the important heart-water agent, *E. ruminantium*, was

identified as an etiologic agent in several human cases from South Africa [120]. Unfortunately, none of these reports from Africa have yet been published in the peer-reviewed literature, so additional investigations should be forthcoming. Loftis et al. reported detection of the so-called Panola Mountain *Ehrlichia* agent in *Amblyomma* spp. ticks from the United States, Caribbean islands and Africa [121, 122]. This organism appears to cause a mild febrile illness in humans and cervids [123, 124]. The most striking feature of this yet unnamed bacterium is its genetic and antigenic similarity to rodent-tropic isolates of *E. ruminantium* [125].

While new Anaplasma species causing human disease have not been described, the tremendous diversity and adaptability of *A. phagocytophilum* to different animal hosts is now well documented. Precisely what distinguishes the human pathogenic variants from those that are non-pathogenic remains elusive.

## FUTURE PERSPECTIVES

Our expanding knowledge of the emerging human pathogens in the family Anaplasmataceae has not only raised questions about the true prevalence of these under-reported diseases but it has also highlighted significant unresolved problems in the appropriate diagnosis, surveillance, and treatment of these diseases. The clinical manifestations of known anaplasmosis and different ehrlichioses in humans are overlapping and non-specific so accurate clinical diagnosis, especially in the acute phase, is difficult without proper laboratory methods. However, even the most efficient diagnostic methods available are either useful only during a very short period of acute disease (such as PCR) or effective only retrospectively. Serologic testing often provides the sole data available but it is ineffective for differentiation of Anaplasma and *Ehrlichia* species due to their significant antigenic cross-reactivity within a genus and between genera. Little cross-reactivity exists between *Neoehrlichia* and these genera but antigenic cross-reactivity of other emerging agents of Anaplasmataceae is unknown. There is a need for development of more rapid and sensitive point-of-care diagnostic methods, particularly new DNA detection tools that may be used during the acute stage of infection. There is also room for development of more sensitive and reliable serological assays than IFA testing. Since several tick-borne agents may be present in the same tick, possible mixed infections with unusual clinical manifestations might require access to immediate assays for detection of Anaplasma, *Ehrlichia*, Rickettsia, Bartonella, Borrelia and Babesia, or multiplexed assays that may be more clinically useful by reducing costs and increasing physician interest in addressing ambiguous clinical findings. This approach may lead to discovery of new tick-borne disease agents that will pose yet another set of challenges for veterinary, medical and public health specialists, and for fundamental studies of the evolution of this fascinating family of intracellular bacteria.

## Acknowledgements

The findings and conclusions in this report are those of the authors and do not necessarily represent the views of the Centers for Disease Control or the Department of Health and Human Services of the United States (MEE). The authors thank Gregory A. Dasch for careful review of the manuscript and helpful suggestions.

## References

- Dumler JS, Barbet AF, Bekker CPJ et al. Reorganization of genera in the families Rickettsiaceae and Anaplasmataceae in the order Rickettsiales: unification of some species of *Ehrlichia* with *Anaplasma*, *Cowdria* with *Ehrlichia* and *Ehrlichia* with *Neorickettsia*, descriptions of six new species combinations and designation of *Ehrlichia equi* and 'HGE agent' as subjective synonyms of *Ehrlichia phagocytophila*. *Int J Syst Evol Microbiol* 2001 ; 51 : 2145-65.
- Kocan K, de la Fuente J, Blouin E, Coetzee J, Ewing SA. The natural history of *Anaplasma marginale*. *Vet Parasitol* 2010 ; 167 : 95-107.
- Stich RW, Schaefer J, Bremer W, Needham G, Jittapalpong S. Host surveys, ixodid tick biology and transmission scenarios as related to the tick-borne pathogen, *Ehrlichia canis*. *Vet Parasitol* 2008 ; 158 : 256-73.
- Mahan SM. Review of the molecular biology of *Cowdria ruminantium*. *Vet Parasitol* 1995 ; 57 : 51-6.
- Peter T, Burridge M, Mahan S. *Ehrlichia ruminantium* infection (heartwater) in wild animals. *Trends Parasitol* 2002 ; 18 : 214-8.
- Carrade DD, Foley JE, Borjesson DL, Sykes JE, 2009. Canine granulocytic anaplasmosis: a review. *J Vet Intern Med* 2009 ; 23 : 1129-41.
- Woldehiwet Z. The natural history of *Anaplasma phagocytophilum*. *Vet Parasitol* 2010 ; 167 : 108-22.
- Stouthamer R, Breeuwer JA, Hurst GD. *Wolbachia pipientis*: microbial manipulator of arthropod reproduction. *Ann Rev Microbiol* 1999 ; 53 : 71-102.
- Dumler JS, Rikihisa Y, Dasch GA: Family II. Anaplasmataceae Philip 1957, 980AL emend. Dumler, Barbet, Bekker, Dasch, Palmer, Ray, Rikihisa and Rurangirwa 2001 ; 2156. In: Garrity GM, ed. *Bergey's Manual of Systematic Bacteriology*. New York, NY: Springer 2005 : 117-45.
- Kawahara M, Rikihisa Y, Isogai E et al. Ultrastructure and phylogenetic analysis of '*Candidatus Neoehrlichia mikurensis*' in the family Anaplasmataceae, isolated from wild rats and found in *Ixodes ovatus* ticks. *Int J Syst Evol Microbiol* 2004 ; 54 : 1837-43.
- Yabsley M, Murphy S, Luttrell MP, Wilcox B, Howerth E, Munderloh U. Characterization of '*Candidatus Neoehrlichia lotoris*' (family Anaplasmataceae) from raccoons (*Procyon lotor*). *Int J Syst Evol Microbiol* 2008 ; 58 : 2794-8.
- Rikihisa Y, Zhang C, Christensen B. Molecular characterization of *Aegyptianella pullorum* (Rickettsiales, Anaplasmataceae). *J Clin Microbiol* 2003 ; 41 : 5294-7.
- Rikihisa Y. New findings on members of the family Anaplasmataceae of veterinary importance. *Ann N Y Acad Sci* 2006 ; 1078 : 438-45.
- Rikihisa Y. The tribe Ehrlichieae and ehrlichial diseases. *Clin Microbiol Rev* 1991 ; 4 : 286-308.
- Werren J, Baldo L, Clark M. *Wolbachia*: master manipulators of invertebrate biology. *Nat Rev Microbiol* 2008 ; 6 : 741-51.
- Popov VL, Han VC, Chen SM et al. Ultrastructural differentiation of the genogroups in the genus *Ehrlichia*. *J Med Microbiol* 1998 ; 47 : 235-51.
- Rikihisa Y, Zhi N, Wormser GP, Wen B, Horowitz HW, Hechemy KE. Ultrastructural and antigenic characterization of a granulocytic ehrlichiosis agent directly isolated and stably cultivated from a patient in New York State. *J Inf Dis* 1997 ; 175 : 210-3.
- Lin M, Rikihisa Y. *Ehrlichia chaffeensis* and *Anaplasma phagocytophilum* lack genes for lipid A biosynthesis and incorporate cholesterol for their survival. *Inf Immun* 2003 ; 71 : 5324-31.
- Munderloh UG, Jauron SD, Fingerle V et al. Invasion and intracellular development of the human granulocytic ehrlichiosis agent in tick cell culture. *J Clin Microbiol* 1999 ; 37 : 2518-24.
- Reichard MV, Roman RM, Kocan KM et al. Inoculation of white-tailed deer (*Odocoileus virginianus*) with Ap-V1 or NY-18 strains of *Anaplasma phagocytophilum* and microscopic demonstration of Ap-V1 in *Ixodes scapularis* adults that acquired infection from deer as nymphs. *Vector Borne Zoonotic Dis* 2009 ; 9 : 565-8.
- Munderloh U, Lynch M, Herron M et al. Infection of endothelial cells with *Anaplasma marginale* and *A. phagocytophilum*. *Vet Microbiol* 2004 ; 101 : 53-64.
- Zhang J-Z, Popov V, Gao S, Walker D, Yu X-J. The developmental cycle of *Ehrlichia chaffeensis* in vertebrate cells. *Cell Microbiol* 2007 ; 9 : 610-8.
- Rikihisa Y. Molecular events involved in cellular invasion by *Ehrlichia chaffeensis* and *Anaplasma phagocytophilum*. *Vet Parasitol* 2010 ; 167 : 155-66.
- Thirumalapura N, Crossley E, Walker D, Ismail N. Persistent infection contributes to heterologous protective immunity against fatal ehrlichiosis. *Inf Immun* 2009 ; 77 : 5682-9.
- Xiong Q, Bao W, Ge Y, Rikihisa Y. *Ehrlichia ewingii* infection delays spontaneous neutrophil apoptosis through stabilization of mitochondria. *J Inf Dis* 2008 ; 197 : 1110-8.
- Herron MJ, Nelson CM, Larson J, Snapp KR, Kansas GS, Goodman JL. Intracellular parasitism by the human granulocytic ehrlichiosis bacterium through the P-selectin ligand, PSGL-1. *Science* 2000 ; 288 : 1653-6.
- Kumagai Y, Matsuo J, Hayakawa Y, Rikihisa Y. Cyclic di-GMP signaling regulates invasion by *Ehrlichia chaffeensis* of human monocytes. *J Bacteriol* 2010 ; 192 : 4122-33.
- Zhang J-Z, McBride J, Yu X-J. L-selectin and E-selectin expressed on monocytes mediating *Ehrlichia chaffeensis* attachment onto host cells. *FEMS Microbiol Lett* 2003 ; 227 : 303-9.
- Mott J, Barnewall RE, Rikihisa Y. Human granulocytic ehrlichiosis agent and *Ehrlichia chaffeensis* reside in different cytoplasmic compartments in HL-60 cells. *Inf Immun* 1999 ; 67 : 1368-78.
- Liu Y, Zhang Z, Jiang Y et al. Obligate intracellular bacterium *Ehrlichia* inhibiting mitochondrial activity. *Microbes Infect* 2010 Nov 9. [Epub ahead of print].
- Niu H, Yamaguchi M, Rikihisa Y. Subversion of cellular autophagy by *Anaplasma phagocytophilum*. *Cell Microbiol* 2008 ; 10 : 593-605.
- Rikihisa Y. *Anaplasma phagocytophilum* and *Ehrlichia chaffeensis*: subversive manipulators of host cells. *Nat Rev Microbiol* 2010 ; 8 : 328-39.
- Thomas S, Popov V, Walker D. Exit mechanisms of the intracellular bacterium *Ehrlichia*. *PLoS ONE* 2010 ; 5 : e15775.
- Dunning Hotopp JC, Lin M, Madupu R et al. Comparative genomics of emerging human ehrlichiosis agents. *PLoS Genetics* 2006 ; 2 : e21-e21.
- Brayton K, Kappmeyer L, Herndon D et al. Complete genome sequencing of *Anaplasma marginale* reveals that the surface is skewed to two superfamilies of outer membrane proteins. *PNAS USA* 2005 ; 102 : 844-9.
- Frutos R, Viari A, Ferraz C et al. Comparative genomic analysis of three strains of *Ehrlichia ruminantium* reveals an active process of genome size plasticity. *J Bacteriol* 2006 ; 188 : 2533-42.
- Lin M, Zhang C, Gibson K, Rikihisa Y. Analysis of complete genome sequence of *Neorickettsia risticii*: causative agent of Potomac horse fever. *Nucl Acid Res* 2009 ; 37 : 6076-91.
- Reddy GR, Sulsona CR, Barbet AF, Mahan SM, Burridge MJ, Alleman AR. Molecular characterization of a 28 kDa surface antigen gene family of the tribe Ehrlichieae. *Biochem Biophys Res Commun* 1998 ; 247 : 636-43.
- Foley J, Nieto N, Barbet A, Foley P. Antigen diversity in the parasitic bacterium *Anaplasma phagocytophilum* arises from selectively-represented, spatially clustered functional pseudogenes. *PLoS ONE* 2009 ; 4 : e8265.



40. Morissette E, Massung R, Foley J, Alleman AR, Foley P, Barbet A. Diversity of *Anaplasma phagocytophilum* strains, USA. *Emerg Infect Dis* 2009 ; 15 : 928-31.
41. Massung R, Mather T, Priestley R, Levin M. Transmission efficiency of the AP-Variant 1 strain of *Anaplasma phagocytophila*. *Ann NY Acad Sci* 2003; 990 : 75-9.
42. Nieto N, Madigan J, Foley J. The dusky-footed woodrat (*Neotoma fuscipes*) is susceptible to infection by *Anaplasma phagocytophilum* originating from woodrats, horses, and dogs. *J Wildl Dis* 2010 ; 46 : 810-7.
43. Long SW, Zhang X-F, Qi H, Standaert S, Walker D, Yu X-J. Antigenic variation of *Ehrlichia chaffeensis* resulting from differential expression of the 28-kilodalton protein gene family. *Inf Immun* 2002 ; 70 : 1824-31.
44. Yu XJ, McBride JW, Walker DH. Genetic diversity of the 28-kilodalton outer membrane protein gene in human isolates of *Ehrlichia chaffeensis*. *J Clin Microbiol* 1999 ; 37 : 1137-43.
45. Ohashi N, Zhi N, Zhang Y, Rikihisa Y. Immunodominant major outer membrane proteins of *Ehrlichia chaffeensis* are encoded by a polymorphic multigene family. *Inf Immun* 1998 ; 66 : 132-9.
46. Singu V, Peddireddi L, Sirigireddy K, Cheng C, Munderloh U, Ganta R. Unique macrophage and tick cell-specific protein expression from the p28/p30-outer membrane protein multigene locus in *Ehrlichia chaffeensis* and *Ehrlichia canis*. *Cell Microbiol* 2006 ; 8 : 1475-87.
47. Zhang J-Z, Guo H, Winslow G, Yu X-J. Expression of members of the 28-kilodalton major outer membrane protein family of *Ehrlichia chaffeensis* during persistent infection. *Inf Immun* 2004 ; 72 : 4336-43.
48. McBride JW, Yu XJ, Walker DH. A conserved, transcriptionally active p28 multigene locus of *Ehrlichia canis*. *Gene* 2000 ; 254 : 245-52.
49. Barbet A, Byrom B, Mahan S. Diversity of *Ehrlichia ruminantium* major antigenic protein 1-2 in field isolates and infected sheep. *Inf Immun* 2009 ; 77 : 2304-10.
50. Kumagai Y, Huang H, Rikihisa Y. Expression and porin activity of P28 and OMP-1F during intracellular *Ehrlichia chaffeensis* development. *J Bacteriol* 2008 ; 190 : 3597-605.
51. Foley J, Foley P, Brown R, Lane R, Dumlers JS, Madigan J. Ecology of *Anaplasma phagocytophilum* and *Borrelia burgdorferi* in the western United States. *J Vect Ecol* 2004 ; 29 : 41-50.
52. Liz J. Ehrlichiosis in *Ixodes ricinus* and wild mammals. *Int J Med Microbiol* 2002 ; 291 Suppl 33 : 104-5.
53. Ohashi N, Inayoshi M, Kitamura K et al. *Anaplasma phagocytophilum*-infected ticks, Japan. *Emerg Infect Dis* 2005 ; 11 : 1780-3.
54. Bown KJ, Lambin X, Telford GR, et al. Relative importance of *Ixodes ricinus* and *Ixodes trianguliceps* as vectors for *Anaplasma phagocytophilum* and *Babesia microti* in field vole (*Microtus agrestis*) populations. *Appl Environ Microbiol* 2008 ; 74 : 7118-25.
55. Santos AS, Santos-Silva MM, Almeida VC, Bacellar F, Dumler JS. Detection of *Anaplasma phagocytophilum* DNA in *Ixodes* ticks (Acari: Ixodidae) from Madeira Island and Setubal District, mainland Portugal. *Emerg Infect Dis* 2004 ; 10 : 1643-8.
56. Sarih MH, M'Ghirbi Y, Bouattour A, Gern L, Baranton G, Postic D. Detection and identification of *Ehrlichia* spp. in ticks collected in Tunisia and Morocco. *J Clin Microbiol* 2005 ; 43 : 1127-32.
57. M'Ghirbi Y, Ghorbel A, Amouri M, Nebaoui A, Haddad S, Bouattour A. Clinical, serological, and molecular evidence of ehrlichiosis and anaplasmosis in dogs in Tunisia. *Parasitol Res* 2009 ; 104 : 767-74.
58. Inokuma H, Oyamada M, Kelly P et al. Molecular detection of a new *Anaplasma* species closely related to *Anaplasma phagocytophilum* in canine blood from South Africa. *J Clin Microbiol* 2005 ; 43 : 2934-7.
59. Nowak M, Cieniuch S, Stanczak J, Siuda K. Detection of *Anaplasma phagocytophilum* in *Amblyomma flavomaculatum* ticks (Acari: Ixodidae) collected from lizard *Varanus exanthematicus* imported to Poland. *Exp Appl Acarol* 2010 ; 51 : 363-71.
60. Keysary A, Massung R, Inbar M et al. Molecular evidence for *Anaplasma phagocytophilum* in Israel. *Emerg Infect Dis* 2007 ; 13 : 1411-2.
61. Eremeeva ME, Dasch GA. *Anaplasma*. Liu D, ed. *Molecular Detection of Human Bacterial Pathogens*. Boca Raton, FL: Taylor and Francis Group, LLC ; 2011 : 601-15.
62. Telford SR, 3rd, Dawson JE, Katavolos P, Warner CK, Kolbert CP, Persing DH. Perpetuation of the agent of human granulocytic ehrlichiosis in a deer tick-rodent cycle. *Proc Natl Acad Sci USA* 1996 ; 93 : 6209-14.
63. Dumler JS, Choi KS, Garcia-Garcia JC et al. Human granulocytic anaplasmosis and *Anaplasma phagocytophilum*. *Emerg Infect Dis* 2005 ; 11 : 1828-34.
64. Childs J, Paddock C. The ascendancy of *Amblyomma americanum* as a vector of pathogens affecting humans in the United States. *Ann Rev Entomol* 2003 ; 48 : 307-37.
65. Yabsley M. Natural history of *Ehrlichia chaffeensis*: vertebrate hosts and tick vectors from the United States and evidence for endemic transmission in other countries. *Vet Parasitol* 2010 ; 167 : 136-48.
66. Ndip L, Ndip R, Ndivo V, Awuh J, Walker D, McBride J. *Ehrlichia* species in *Rhipicephalus sanguineus* ticks in Cameroon. *Vector Borne Zoon Dis* 2007 ; 7 : 221-7.
67. Paddock CD, Yabsley MJ. Ecological havoc, the rise of white-tailed deer, and the emergence of *Amblyomma americanum*-associated zoonoses in the United States. *Curr Top Microbiol Immunol* 2007 ; 315 : 289-324.
68. Machado R, Duarte J, Dagnone A, Szabó M. Detection of *Ehrlichia chaffeensis* in Brazilian marsh deer (*Blastocerus dichotomus*). *Vet Parasitol* 2006 ; 139 : 262-6.
69. Oliveira LS, Oliveira KA, Mourão LC et al. First report of *Ehrlichia ewingii* detected by molecular investigation in dogs from Brazil. *Clin Microbiol Infect* 2009 ; 15 (Suppl 2) : 55-6.
70. Long SW, Zhang X, Zhang J, Ruble RP, Teel P, Yu XJ. Evaluation of transovarial transmission and transmissibility of *Ehrlichia chaffeensis* (Rickettsiales: Anaplasmataceae) in *Amblyomma americanum* (Acari: Ixodidae). *J Med Entomol* 2003 ; 40 : 1000-4.
71. Baldrige G, Scoles G, Burkhardt N, Schloeder B, Kurtti T, Munderloh U. Transovarial transmission of Francisella-like endosymbionts and *Anaplasma phagocytophilum* variants in *Dermacentor albipictus* (Acari: Ixodidae). *J Med Entomol* 2009 ; 46 : 625-32.
72. Ogden N, Bown K, Horrocks B, Woldehiwet Z, Bennett M. Granulocytic *Ehrlichia* infection in Ixodid ticks and mammals in woodlands and uplands of the UK. *Med Vet Entomol* 1998 ; 12 : 423-9.
73. Chapman A, Bakken J, Folk S et al. Diagnosis and management of tickborne rickettsial diseases: Rocky Mountain spotted fever, ehrlichiosis, and anaplasmosis--United States: a practical guide for physicians and other health-care and public health professionals. *MMWR Recomm Rep* 2006 ; 55 : 1-27.
74. CDC, National Notifiable Diseases Surveillance System (<http://www.cdc.gov/ncepi/diss/nndss/nndss.htm>) accessed January 29, 2011.
75. Santos AS, Santos-Silva MM, Sousa RD, Bacellar F, Dumler JS. PCR-based survey of *Anaplasma phagocytophilum* in Portuguese ticks (Acari: Ixodidae). *Vector Borne Zoon Dis* 2009 ; 9 : 33-40.
76. Strle F. Human granulocytic ehrlichiosis in Europe. *Int J Med Microbiol* 2004 ; 293 (Suppl 37) : 27-35.
77. Heo E-J, Park J-H, Koo J-R et al. Serologic and molecular detection of

- Ehrlichia chaffeensis* and *Anaplasma phagocytophila* (human granulocytic ehrlichiosis agent) in Korean patients. *J Clin Microbiol* 2002 ; 40 : 3082-5.
78. Zhang S, Hai R, Li W et al. Seroprevalence of human granulocytotropic anaplasmosis in central and southeastern China. *Am J Trop Med Hyg* 2009; 81 : 293-5.
79. Parola P. Tick-borne rickettsial diseases: emerging risks in Europe. *Comp Immun Microbiol Infect Dis* 2004 ; 27 : 297-304.
80. Centers for Disease Control and Prevention (CDC). *Anaplasma phagocytophilum* transmitted through blood transfusion--Minnesota, 2007. *MMWR Morb Mortal Wkly Rep* 2008 ; 57 : 1145-8.
81. Zhang L, Liu Y, Ni D et al. Nosocomial transmission of human granulocytic anaplasmosis in China. *JAMA* 2008 ; 300 : 2263-70.
82. Adachi JA, Grimm EM, Johnson P, Uthman M, Kaplan B, Rakita RM. Human granulocytic ehrlichiosis in a renal transplant patient: case report and review of the literature. *Transplantation* 1997 ; 64 : 1139-42.
83. Bakken JS, Krueh JK, Lund T, Malkovitch D, Asanovich K, Dumler JS. Exposure to deer blood may be a cause of human granulocytic ehrlichiosis. *Clin Inf Dis* 1996 ; 23 : 198.
84. Bakken J, Dumler S. Human granulocytic anaplasmosis. *Infect Dis Clin North Am* 2008 ; 22 : 433-48, viii.
85. Hongo I, Bloch K. *Ehrlichia* infection of the central nervous system. *Curr Treat Options Neurol* 2006 ; 8 : 179-84.
86. Ratnasamy N, Everett ED, Roland WE, McDonald G, Caldwell CW. Central nervous system manifestations of human ehrlichiosis. *Clin Inf Dis* 1996 ; 23 : 314-9.
87. Olano J, Masters E, Hogrefe W, Walker D. Human monocytotropic ehrlichiosis, Missouri. *Emerg Infect Dis* 2003 ; 9 : 1579-86.
88. Olano J, Hogrefe W, Seaton B, Walker D. Clinical manifestations, epidemiology, and laboratory diagnosis of human monocytotropic ehrlichiosis in a commercial laboratory setting. *Clin Diagn Lab Immunol* 2003 ; 10 : 891-6.
89. Bakken JS, Aguero-Rosenfeld ME, Tilden RL et al. Serial measurements of hematologic counts during the active phase of human granulocytic ehrlichiosis. *Clin Inf Dis* 2001 ; 32 : 862-70.
90. Xiong Q, Wang X, Rikihisa Y. High-cholesterol diet facilitates *Anaplasma phagocytophilum* infection and up-regulates macrophage inflammatory protein-2 and CXCR2 expression in apolipoprotein E-deficient mice. *J Inf Dis* 2007 ; 195 : 1497-503.
91. Walker D, Ismail N, Olano J, McBride J, Yu X-J, Feng H-M. *Ehrlichia chaffeensis*: a prevalent, life-threatening, emerging pathogen. *Trans Am Clin Climatol Assoc* 2004 ; 115 : 375-82, discussion 382-4.
92. Walker DH. *Ehrlichia* under our noses and no one notices. *Arch Virol Suppl* 2005 ; 19 : 147-56.
93. Paddock CD, Folk SM, Shore GM et al. Infections with *Ehrlichia chaffeensis* and *Ehrlichia ewingii* in persons coinfecting with human immunodeficiency virus. *Clin Inf Dis* 2001 ; 33 : 1586-94.
94. Masters E, Storch G, Sumner J. *Ehrlichia ewingii* in an immunocompetent adult. *Mo Med* 2009 ; 106 : 301-3.
95. Blanco JR, Oteo JA. Human granulocytic ehrlichiosis in Europe. *Clin Microbiol Infect* 2002 ; 8 : 763-72.
96. Vorobyeva N, Korenberg E, Grigoryan Y. Diagnostics of tick-borne diseases in the endemic region of Russia. *Wien Klin Wochenschr* 2002 ; 114: 610-2.
97. Dumler JS, Brouqui P. Molecular diagnosis of human granulocytic anaplasmosis. *Expert Rev Mol Diagn* 2004 ; 4 : 559-69.
98. Dumler JS, Madigan JE, Pusterla N, Bakken JS. Ehrlichioses in humans: epidemiology, clinical presentation, diagnosis, and treatment. *Clin Infect Dis* 2007 ; 45 (Suppl 1) : S45-51.
99. Thomas RJ, Dumler JS, Carlyon JA. Current management of human granulocytic anaplasmosis, human monocytic ehrlichiosis and *Ehrlichia ewingii* ehrlichiosis. *Expert Rev Anti Infect Ther* 2009 ; 7 : 709-22.
100. Aguero-Rosenfeld M. Laboratory aspects of tick-borne diseases: Lyme, human granulocytic ehrlichiosis and babesiosis. *Mt Sinai J Med* 2003 ; 70 : 197-206.
101. Brouqui P, Bacellar F, Baranton G et al. Guidelines for the diagnosis of tick-borne bacterial diseases in Europe. *Clin Microbiol Infect* 2004 ; 10 : 1108-32.
102. Ismail N, Bloch K, McBride J. Human ehrlichiosis and anaplasmosis. *Clin Lab Med* 2010 ; 30 : 261-92.
103. Branger S, Rolain JM, Raoult D. Evaluation of antibiotic susceptibilities of *Ehrlichia canis*, *Ehrlichia chaffeensis*, and *Anaplasma phagocytophilum* by real-time PCR. *Antimicrob Agents Chemother* 2004 ; 48 : 4822-8.
104. Peters TR, Edwards KM, Standaert SM. Severe ehrlichiosis in an adolescent taking trimethoprim-sulfamethoxazole. *Pediatr Infect Dis J* 2000; 19 : 170-2.
105. Doudier B, Olano J, Parola P, Brouqui P. Factors contributing to emergence of *Ehrlichia* and *Anaplasma* spp. as human pathogens. *Vet Parasitol* 2010 ; 167 : 149-54.
106. Gage K, Burkot T, Eisen R, Hayes E. Climate and vectorborne diseases. *Am J Prev Med* 2008 ; 35 : 436-50.
107. Perez M, Bodor M, Zhang C, Xiong Q, Xiong Q, Rikihisa Y. Human infection with *Ehrlichia canis* accompanied by clinical signs in Venezuela. *Ann NY Acad Sci* 2006 ; 1078 : 110-7.
108. Wen B, Rikihisa Y, Mott J, Fuerst PA, Kawahara M, Suto C. *Ehrlichia muris* sp. nov., identified on the basis of 16S rRNA base sequences and serological, morphological, and biological characteristics. *Int J Syst Bacteriol* 1995 ; 45 : 250-4.
109. Shibata S, Kawahara M, Rikihisa Y et al. New *Ehrlichia* species closely related to *Ehrlichia chaffeensis* isolated from *Ixodes ovatus* ticks in Japan. *J Clin Microbiol* 2000 ; 38 : 1331-8.
110. Rar VA, Livanova NN, Panov VV, Astanin VV, Livanov SG, Morozova OV. The study of *Anaplasma* and *Ehrlichia* genetic variability in parasitic systems in the South-Western Siberia and Ural. *Bull Sib Med* 2006 ; 5 : 116-20.
111. Shpynov SN, Rudakov NV, Iastrebov VK et al. New evidence for the detection of *Ehrlichia* and *Anaplasma* in ixodes ticks in Russia and Kazakhstan. *Med Parazitol (Mosk)* 2004 ; Apr-Jun : 10-4.
112. Nefedova VV, Korenberg EI, Kovalevskii IV, Gorelova NB, Vorob'eva NN. Microorganisms of the order Rickettsiales in taiga tick (*Ixodes persulcatus* Sch.) from the Pre-Ural region. *Vestn Ross Akad Med Nauk* 2008 ; 7 : 47-50.
113. Grady C, Ereemeeva ME, Stromdahl E et al. Novel *Ehrlichia muris*-like Human Pathogen identified in humans, *Ixodes scapularis* ticks and rodents from Minnesota and Wisconsin. The 59th Annual Meeting of the American Society for Tropical Medicine and Hygiene. Atlanta, GA. 2010.
114. Spitalská E, Boldis V, Kostanová Z, Kocianová E, Stefanidesová K. Incidence of various tick-borne microorganisms in rodents and ticks of central Slovakia. *Acta Virol* 2008 ; 52 : 175-9.
115. Ereemeeva M, Oliveira A, Moriarity J et al. Detection and identification of bacterial agents in *Ixodes persulcatus* Schulze ticks from the north western region of Russia. *Vector Borne Zoon Dis* 2007 ; 7 : 426-36.
116. Kawahara M, Ito T, Suto C et al. Comparison of *Ehrlichia muris* strains isolated from wild mice and ticks and serologic survey of humans and animals with *E. muris* as antigen. *J Clin Microbiol* 1999 ; 37 : 1123-9.

117. von Loewenich F, Geissdrfer W, Disqu C et al. Detection of "*Candidatus Neoehrlichia mikurensis*" in two patients with severe febrile illnesses: evidence for a European sequence variant. *J Clin Microbiol* 2010 ; 48 : 2630-5.
118. Fehr J, Bloemberg G, Ritter C et al. Septicemia caused by tick-borne bacterial pathogen *Candidatus Neoehrlichia mikurensis*. *Emerg Infect Dis* 2010 ; 16 : 1127-9.
119. Welinder-Olsson C, Kjellin E, Vaht K, Jacobsson S, Wenners C. First case of human "*Candidatus Neoehrlichia mikurensis*" infection in a febrile patient with chronic lymphocytic leukemia. *J Clin Microbiol* 2010 ; 48 : 1956-9.
120. Allsopp MTEP, Louw M, Meyer EC. *Ehrlichia ruminantium*: an emerging human pathogen? *Ann NY Acad Sci* 2005 ; 1063 : 358-60.
121. Loftis A, Mixson T, Stromdahl E et al. Geographic distribution and genetic diversity of the *Ehrlichia* sp. from Panola Mountain in *Amblyomma americanum*. *BMC Inf Dis* 2008.; 8 : 54.
122. Loftis A, Kelly PJ, Paddock CD, Blount K, Beati L. Detection of the Panola Mountain *Ehrlichia* sp. in *Amblyomma maculatum* from the USA and *Amblyomma variegatum* from the Caribbean and Africa. 24th Meeting of the American Society for Rickettsiology. Skamania Lodge, Stevenson, Washington, USA. 2010.
123. Yabsley M, Loftis A, Little S. Natural and experimental infection of white-tailed deer (*Odocoileus virginianus*) from the United States with an *Ehrlichia* sp. closely related to *Ehrlichia ruminantium*. *J Wildl Dis* 2008 ; 44 : 381-7.
124. Reeves W, Loftis A, Nicholson W, Czarkowski A. The first report of human illness associated with the Panola Mountain *Ehrlichia* species: a case report. *J Med Case Reports* 2008 ; 2 : 139.
125. Loftis A, Reeves W, Spurlock J et al. Infection of a goat with a tick-transmitted *Ehrlichia* from Georgia, U.S.A., that is closely related to *Ehrlichia ruminantium*. *J Vect Ecol* 2006 ; 31 : 213-23.