

2014

2014 AASU Women's Basketball Guide

Armstrong State University

Follow this and additional works at: <https://digitalcommons.georgiasouthern.edu/armstrong-basket-wmn-team>

Recommended Citation

Armstrong State University, "2014 AASU Women's Basketball Guide" (2014). *Armstrong Women's Basketball Team Archives*. 39. <https://digitalcommons.georgiasouthern.edu/armstrong-basket-wmn-team/39>

This media guide is brought to you for free and open access by the Armstrong Women's Basketball Archives at Digital Commons@Georgia Southern. It has been accepted for inclusion in Armstrong Women's Basketball Team Archives by an authorized administrator of Digital Commons@Georgia Southern. For more information, please contact digitalcommons@georgiasouthern.edu.



**ARMSTRONG ATLANTIC STATE UNIVERSITY
2013-14 WOMEN'S BASKETBALL**



2013-14 ARMSTRONG PIRATES ROSTER



2013-14 Armstrong Women's Basketball Squad. Standing (l-r): Morgan Mitchell, Amber Howell, Nichole Findura, Hanna Bogнар, Brigitta Barta, Mauri Wells, Laura Redmond. Sitting (l-r): Bryonna Davis, Dee Hayward, Tyler Carlson, Stephenie Coney, Amber Johnson, Adoniah Lewis, Tori Klewicki-McNutt.

2013-14 ARMSTRONG ATLANTIC STATE UNIVERSITY PIRATE WOMEN'S BASKETBALL ROSTER

NO.	NAME	HT.	CL.	POS.	HOMETOWN / PREVIOUS SCHOOL
0	Brigitta Barta	6-0	Fr.	F	Budapest, Hungary / University of Debrecen
2	Morgan Mitchell	5-9	Sr.	F	Lilburn, Ga. / Parkview HS
10	Dee Hayward	5-7	Jr.	G	Glasgow, Scotland / Leeds Met University
12	Stephenie Coney	5-2	Sr.	G	Miami, Fla. / Santa Fe CC
14	Amber Howell	5-11	Jr.	F	Athens, Ga. / Central Georgia Tech
15	Adoniah Lewis	5-9	Jr.	G	Auckland, New Zealand / Hillsborough CC
21	Tyler Carlson	5-6	Sr.	G	Richmond Hill, Ga. / Mars Hill
22	Bryonna Davis	5-8	Sr.	G	Gary, Ind. / Michigan State
23	Mauri Wells	6-0	Sr.	F/C	Rome, Ga. / Rome HS
24	Tori Klewicki-McNutt	5-8	Sr.	G	DeWitt, Mich. / Grand Valley State
25	Nichole Findura	6-2	Fr.	C	Stockbridge, Ga. / Woodland HS
30	Amber Johnson	5-8	Jr.	G	Decatur, Ga. / Central Georgia Tech
31	Laura Redmond	5-9	Fr.	G	Atlanta, Ga. / St. Pius X
32	Hanna Bogнар	6-2	Jr.	C	Tata, Hungary / Seward CC

HEAD COACH: Fala Bullock

ASSISTANT COACHES: CJ Pace, Shanae Vaifanua

VOLUNTEER ASSISTANT COACH: Emery Davis

TABLE OF CONTENTS



CONTENTS

2013-14 Roster/Team Photo	IFC
2013-14 Outlook	2-3
Head Coach Fala Bullock	4
Assistant Coaches CJ Pace and Shanae Vaifanua	5
2013-14 Player Profiles	6-16
Pirates on the Internet	17
Armstrong Atlantic State University	18
Armstrong Administration	19
Athletic Department Staff	20
Alumni Arena	21
Armstrong Athletic Training	22
2013-14 Opponents	23-25
Armstrong Basketball Media Services	26
2012-13 Season Review	27
2012-13 Results/Statistics	28
2012-13 Armstrong Player/Team Highs	29
The Peach Belt Conference	30-33
Armstrong Records	34-37
Honors	38
All-Time Records	39
All-Time Results	40-45
This Is Savannah	46
2013-14 Schedule	BC

QUICK FACTS

Location	Savannah, Ga. 31419
Founded	1935
Enrollment	7,500
Nickname	Pirates
Colors	Maroon and Gold
Athletics Webpage	www.armstrongpirates.com
Affiliation	NCAA Division II
Conference	Peach Belt
Home Gym	Alumni Arena
Capacity	4,000
President	Dr. Linda M. Bleicken
Athletic Director	Lisa Sweany
Women's Basketball Head Coach	Fala Bullock
Record at Armstrong (Years)	First Season
Overall Coaching Record (Years)	First Season
2012-13 Overall Record	13-14
2012-13 PBC Record/Finish	8-11 / 4th East
Assistant Coaches	CJ Pace, Shanae Vaifanua

CREDITS

The 2013-14 Armstrong Atlantic State University media guide was published by the Armstrong Office of Sports Communications, Chad Jackson, director. Armstrong head coach Fala Bullock also contributed to this publication. For more information regarding the Armstrong women's basketball program, please contact:

Chad Jackson	Fala Bullock
Director of Sports Communications	Head Women's Basketball Coach
Phone: 912-344-3114	Phone: 912-344-3110
Fax: 912-344-3422	Fax: 912-344-3422
E-Mail: Chad.Jackson@armstrong.edu	E-Mail: Fala.Bullock@armstrong.edu



ARMSTRONG ATHLETIC DEPARTMENT PHONE DIRECTORY

Main Numbers

Athletic Department	912-344-2813
Athletics FAX	912-344-3422

Administration

Lisa Sweany Athletic Director	912-344-2730
Jennifer Rushton, Assoc. AD/Compliance	912-344-3368
Chad Jackson, Sports Communications	912-344-3114
Michael Smoose, Assistant AD / Marketing	912-344-3236
Adam Tom, Assistant AD / Facilities	912-713-7397
Dr. Donald Anderson, Student Services	912-344-2726
Ken Tessier, Head Athletic Trainer	912-344-2866
Caroline Brif, Asst. Athletic Trainer	912-344-2866
Derek Smith, Graduate Assistant	912-344-2813

Coaching Staff

Calvain Culberson, Baseball	912-344-3147
Evans Davis, Interim Men's Basketball	912-344-2690
Brandon Chappell, Asst. Men's Basketball	912-344-2992
Zach Corliss, Asst. Men's Basketball	912-344-2598
Fala Bullock, Women's Basketball	912-344-3110
C.J. Pace, Asst. Wm. Basketball	912-344-2674
Shanae Vaifanua, Asst. Wm. Basketball	912-344-3117
Michael Sergi, Men's Cross Country	912-344-2371
Michael Butler, Men's & Women's Golf	912-344-2752
Simon Earnshaw, Tennis	912-344-3195
Iuliia Sherrod, Asst. Tennis	912-344-3195
Eric Faulconer, Women's Soccer	912-344-3095
Ted Evans, Softball	912-344-2727
Will Condon, Volleyball	912-344-3239
Alli Arbogast, Asst. Volleyball	912-344-3206

Other Numbers

Press Table (Basketball)	912-344-3200
	912-344-2729
Armstrong Training Room	912-344-2866





BULLOCK ERA BEGINS WITH EXCITEMENT

The Armstrong women's basketball team gathered some momentum heading into the 2013-14 season by winning its last five games of the regular season, its longest winning streak since the 2004-05 season. As a result, the Pirates played their way into the Peach Belt Conference tournament.

Head coach Matt Schmidt resigned in the offseason to take an assistant coaching position at Duquesne University and head coach Fala Bullock, a former DII student-athlete at Northeastern State and assistant coach at Columbus State, was hired to replace him in June. She began the Central Georgia Tech junior college program from scratch and went 25-6 in 2012-13, advancing to the GCAA Championships.

So with a coaching change in the works for 2013-14, one might think that the momentum could not be maintained, but coach Fala Bullock is committed to



SENIOR MAURI WELLS LED THE PBC IN REBOUNDING FOR A SECOND CONSECUTIVE YEAR, AVERAGING 9.7 REBOUNDS PER GAME. SHE IS THE THIRD PIRATE TO LEAD THE PBC IN REBOUNDING IN BACK-TO-BACK SEASONS.

keeping Armstrong women's basketball on the rise for this upcoming season as well as the future.

The Pirates return eight players and four starters from last season's squad for 2013-14, which gives coach Bullock a good foundation with which to build.

Armstrong will first and foremost look to senior forward **Mauri Wells** (6-0, Sr., Rome, Ga.) to do what she has done for three seasons - give the Pirates a double-double almost every night out. The PBC's leading rebounder each of the last two seasons, Wells missed the first

month of the season in 2012-13 but returned to average 8.7 points and 9.7 rebounds per game and she has 35 career double-doubles. She also enters her senior season needing just 225 rebounds to become only the second Armstrong player to record 1,000 career rebounds.

The frontcourt also returns senior center **Hanna Bognar** (6-2, Sr., Tata, Hungary), who blocked 19

shots in just 153 minutes of action and will look to improve her offensive game while remaining stalwart defensively. Also returning for the Pirates is senior guard/forward **Morgan Mitchell** (5-9, Sr., Lilburn, Ga.), who will focus solely on basketball this season after wrapping up a very successful four-year career with the Armstrong women's soccer program.

Newcomers to the frontcourt for coach Bullock include two more six-footers in freshmen **Brigitta Barta** (6-0, Fr., Budapest, Hungary) and **Nichole Findura** (6-2, Fr., Stockbridge, Ga.), as well as junior college transfer **Amber Howell** (5-11, Jr., Athens, Ga.). Howell played for coach Bullock at Central Georgia Tech last season while Barta was a member of the Hungarian U16 national team as a youth player in her native country. Findura was a multi-sport standout at Woodland HS.

The scoring load for the Pirates in 2012-13 was shouldered by shooting guard **Tori Klewicki-McNutt** (5-8, Sr., DeWitt, Mich.), as she led the Pirates and ranked among the PBC's leaders at 11.5 points per game. A preseason injury, however, will keep her out



SENIOR BRYONNA DAVIS AVERAGED 8.9 POINTS PER GAME AS A JUNIOR AND SCORED IN DOUBLE DIGITS IN HER FIRST SIX GAMES AS A PIRATE





FOR FUTURE OF PIRATE BASKETBALL



SENIOR STEPHENIE CONEY AVERAGED 6.4 POINTS PER GAME AND LED THE PIRATES IN ASSISTS (76) AND STEALS (36) AS A JUNIOR

of action this season. That means that the Pirates will be looking to senior **Bryonna Davis** (5-8, Sr., Gary, Ind.) to recapture the scoring form she displayed early on in 2012-13 when she scored in double digits in her first six games as a Pirate. Also expected to step up offensively in her senior season is **Tyler Carlson** (5-6, Sr., Richmond Hill, Ga.), who averaged 7.3 points per game

assists last season while also averaging 6.4 points per game, while Hayward saw action in 26 games with 39 assists. If needed, the Pirates can also use Johnson and Carlson at the point.

The schedule for coach Bullock and the Pirates begins with an exhibition contest at Division I cross-town rival Savannah State on October 31st. Armstrong will play six of its first eight games on the road, including tough tests at Benedict, Tampa, nationally-ranked Limestone and Eckerd in the non-conference slate. The Pirates will also host non-conference contests against Columbia (SC) and Coker.

Defending PBC regular season champion Clayton State has been picked to capture the league's title in 2013-14 with North Georgia picked to finish second in a preseason vote of the league's coaches. PBC Tournament finalist Flagler was picked to finish third, followed by USC Aiken, Columbus State, Montevallo and GRU Augusta (formerly Augusta State). Young Harris was picked to finish eighth, followed by Lander, Georgia College, UNC Pembroke, Armstrong, Francis Marion and Georgia Southwestern.

last year after spending two seasons at Mars Hill College and ranked among the Peach Belt's leaders in assist/turnover ratio.

Newcomers at guard for the Pirates include Central Georgia Tech transfer **Amber Johnson** (5-8, Jr., Decatur, Ga.) as well as New Zealand native **Adoniah Lewis** (5-9, Jr., Auckland, New Zealand) and freshman **Laura Redmond** (5-9, Fr., Atlanta, Ga.). Johnson, like teammate Amber Howell, played for Coach Bullock at Central Georgia Tech and Lewis averaged 9.3 points per game at Hillsborough (Fla.) CC a season ago. Redmond was a part of the GHSAAA State Champion St. Pius X squad a year ago.

Coach Bullock is excited to install her quick tempo offensive and defensive schemes which means that the point guard position will be perhaps the most important spot on the court for Armstrong this season. Returning for the Pirates are a pair of point guards with experience in senior **Stephenie Coney** (5-2, Sr., Miami, Fla.) as well as junior **Dee Hayward** (5-7, Jr., Glasgow, Scotland). Coney dished out a team-high 76



First-place votes in parenthesis.
As voted on by the PBC Women's Coaches; Coaches could not vote for own team.

2013-14 PEACH BELT PRESEASON WOMEN'S BASKETBALL POLL

RK	SCHOOL	VOTES
1.	Clayton State	168 (12)
2.	North Georgia	153 (2)
3.	Flagler	130
4.	USC Aiken	115
5.	Columbus State	109
6.	Montevallo	100
7.	GRU Augusta	99
8.	Young Harris	81
9.	Lander	80
10.	Georgia College	75
11.	UNC Pembroke	50
12.	Armstrong	46
13.	Francis Marion	42
14.	Georgia Southwestern	16

2013-14 PBC PRESEASON ALL-CONFERENCE TEAM

Jaymee Carnes, North Georgia
Mimi Hill, North Georgia
Shorty Spencer, Flagler
Taylor Beverly, Montevallo
Ladondra Johnson, Young Harris





FALA BULLOCK HEAD WOMEN'S BASKETBALL COACH

The Armstrong Atlantic State University athletic department announced the hiring of Fala Bullock on June 20th as the Pirates' new head women's basketball coach. Bullock becomes the eighth head women's basketball coach in Armstrong history.

Bullock joins Armstrong from Central Georgia Technical College in Macon, Ga., where she started the program in 2011 and directed the Cougars to an impressive 25-6 record in just their second season of competition in 2012-13, advancing to the GCAA Championships.

No stranger to the Peach Belt Conference, Bullock was the assistant coach as well as the Senior Woman's Administrator (SWA) at Columbus State for two years. The Cougars featured WBCA first-team All-American selection Phoebe Smith and compiled a 32-23 record in her two seasons with the program.

A former two-year standout at Northeastern State University in Tahlequah, Oklahoma, Bullock earned her bachelor's of science degree in health and human performance from Northeastern State in 2004 as well as her master's of science degree in kinesiology from Northeastern State in 2006. She served as a graduate assistant for her alma mater from 2004-06, then spent one season as an assistant coach at Northeastern Oklahoma A&M College before moving on to NCAA Division II Midwestern State as an assistant coach from 2007-09.

The Irvine, California, native began her intercollegiate career at Irvine Valley College, transferring to Northeastern State as a junior and leading the RiverHawks to a Lone Star Conference championship and a first NCAA postseason berth as the team's captain in 2003.

Bullock and her husband, Dermayne, were married in June of 2011 and the couple reside in Savannah.



ARMSTRONG COACHING RECORDS

COACH	YRS	RECORD	PCT.
B.J. Ford	10	121-121	.500
Larry Tapp	2	8-39	.170
Lenny Passink	5	72-55	.567
Kim Bynum	2	21-35	.389
Lynn Jarrett	4	46-63	.422
Roger Hodge	7	138-97	.587
Matt Schmidt	5	60-73	.451
Total	35	466-483	.491



BULLOCK IS THE FOURTH FEMALE HEAD COACH IN ARMSTRONG WOMEN'S BASKETBALL HISTORY



CJ PACE

ASSISTANT COACH

CJ Pace begins her first season as assistant coach for the Armstrong Atlantic State University women's basketball team in 2013-14.

Pace joins the Pirates from Georgia Perimeter College, where she served as an assistant coach for the 2012-13 season. A former two-year standout at the University of South Carolina, Pace averaged 7.6 points per game and ranked among the SEC's leaders in rebounding at 5.9 per game as a senior. She played professionally in Portugal and Peru before starting her coaching career as an assistant at Chipola College, where she played for two seasons and earned her associate degree in 2007.

The Atlanta, Ga., native earned her bachelor's of arts degree in sociology from the University of South Carolina in August, 2010.



SHANAE VAIFANUA

GRADUATE ASSISTANT COACH

Shanae Vaifanua begins her first season as a graduate assistant coach for the Armstrong Atlantic State University women's basketball program in 2013-14.

Vaifanua joins Armstrong from Dixie State College in Utah, where she was a four-year starter for the Storm from 2008-12 and left the school as the fourth all-time leading scorer, third all-time leading rebounder while ranking third all-time in assists and second all-time in steals.

The Hurricane, Utah, native received her bachelor's degree in human communication in 2012 and will be pursuing her graduate degree in communication and leadership from Armstrong beginning this fall.



EMERY DAVIS
VOLUNTEER ASSISTANT
BASKETBALL COACH



TIRAE STEVENS
WOMEN'S BASKETBALL
STUDENT MANAGER





MAURI WELLS
SENIOR FORWARD/CENTER
6-0 • ROME, GA.

23



2012-13

Played in 19 games, making 14 starts as a junior for the Pirates ... Averaged 8.7 points and 9.7 rebounds per game ... Led the Peach Belt Conference in rebounding for a second straight season ... Grabbed 21 rebounds in Armstrong's 63-56 win over Flagler on Feb. 16 ... Also grabbed 16 rebounds at Francis Marion on Feb. 25 ... Notched 10 games with 10+ rebounds ... Scored a season-high 16 points twice, at UNC Pembroke on Feb. 3 and at USC Aiken on Feb. 23 ... Reached double digit scoring in eight games and recorded six double-doubles on the season ... Member of the PBC Presidential Honor Roll.

2011-12

Started all 26 games for the Pirates as a sophomore ... Averaged a team-leading 12.2 points and 13.0 rebounds per game ... Earned third team All-Peach Belt Conference honors ... PBC Player of the Week (Nov. 21) ... Led the Peach Belt and ranked fourth in NCAA Division II in total rebounding ... Also ranked second in the PBC in free throw percentage at 78.2 percent (79-of-101) ... Ranked 11th in scoring ... Notched 17 double-doubles on the season, sixth-most in NCAA Division II ... Reached double digit scoring in 19 games and double digit rebounds in 22 games ... Scored a career-high 22 points at Lander on Feb. 1 ... Grabbed an Alumni Arena-record 24 rebounds against Edward Waters on Nov. 29 ... Member of the PBC Presidential Honor Roll.

WELLS' GAME HIGHS

POINTS:

22 at Lander, 2/1/12

REBOUNDS:

24 vs. Edward Waters, 11/29/11

2010-11

Played in all 26 games, starting 23, for the Lady Pirates as a freshman ... Averaged 11.9 points and 9.7 rebounds per game ... Ranked third in the PBC in rebounding, eighth in field goal percentage (.481), 11th in free throw percentage (.743) and 16th in scoring ... Notched a double-double in her Armstrong debut with 15 points and 10 rebounds at Converse on Nov. 12 ... Scored a season-high 21 points against Flagler on Jan. 3 ... Grabbed a season-high 15 rebounds three times, at Flagler on Feb. 2, against Georgia Southwestern on Feb. 10 and against Francis Marion on Feb. 5 ... Notched 12 double-doubles during the season ... Member of the PBC Presidential Honor Roll.



HIGH SCHOOL

Played for four years at Rome High School ... Earned second-team All-State honors as a senior, as well as Region and Area Player of the Year honors ... Georgia Player of the Game in the GA/TENN All-Star Game in 2010 ... Region Tournament MVP ... Scored 1,000+ career points for the Wolves.

PERSONAL

Born Mauri Wells on November 15, 1991, in Rome, Ga., her hometown ... Daughter of Deidra and Jeff Wells ... Majoring in physical therapy ... Enjoys playing basketball and drawing ... Lists Candace Parker and LeBron James as favorite sports personalities.

MAURI WELLS' CAREER STATISTICS

Year	GP-GS	MIN	FG-FGA	PCT	3PM-3PA	PCT	FTM-FTA	PCT	OR-DR-TR	RPG	TP	PPG	AST	TO	BS	ST
2010-2011	26-23	804	112-233	.481	10-28	.357	75-101	.743	94-159-253	9.7	309	11.9	24	72	19	25
2011-2012	26-26	887	110-241	.456	17-47	.362	79-101	.782	119-219-338	13.0	316	12.2	33	56	17	43
2012-2013	19-14	542	67-170	.394	3-20	.150	28-35	.800	68-116-184	9.7	165	8.7	18	27	12	19
3 Years	71-62	2233	289-644	.449	30-95	.316	182-237	.768	281-494-775	10.9	790	11.1	75	155	48	87





MORGAN MITCHELL

SENIOR FORWARD

5-9 • LILBURN, GA.

2



2012-13

Saw action in five games as a junior for the Pirates ... Will join the Pirates full-time as a senior after wrapping up a stellar four-year career with the Armstrong women's soccer squad.

2011-12

Played in seven games as a sophomore for the Pirates ... Notched three points, 10 rebounds and five assists in 34 minutes of action.

2010-11

Joined the Lady Pirates in December and played in 20 games, starting 18, for the Pirates ... Averaged 2.2 points, 3.6 rebounds and 2.6 assists per game ... Scored a season-high eight points with a season-high 10 rebounds at Georgia College on Jan. 15 ... Also grabbed 10 rebounds at Augusta State on Jan. 12 ... Dished out five assists twice, against Mount Olive on Dec. 17 and against Lander on Jan. 19 ... Member of the PBC Presidential Honor Roll.

HIGH SCHOOL

Played for three seasons at Parkview HS ... Also played women's soccer.

MITCHELL'S GAME HIGHS

POINTS:

8 at Georgia College, 1/15/11

REBOUNDS:

10 at Georgia College, 1/15/11
at Augusta State, 1/12/11



PERSONAL

Born Morgan Leigh Mitchell on March 17, 1991, in Lilburn, Ga., her hometown ... Daughter of Sheila and Charlie Mitchell ... Majoring in criminal justice ... Mother, Sheila, played basketball and father, Charlie, played football and ran track at Chadron State University ... Enjoys snowboarding, wakeboarding, skateboarding and working with animals ... Lists Michael Jordan as a favorite sports personality.

MORGAN MITCHELL'S CAREER STATISTICS

Year	GP-GS	MIN	FG-FGA	PCT	3PM-3PA	PCT	FTM-FTA	PCT	OR-DR-TR	RPG	TP	PPG	AST	TO	BS	ST
2010-2011	20-18	527	18-38	.474	7-18	.389	1-2	.500	17-54-71	3.6	44	2.2	46	59	3	23
2011-2012	7-0	34	1-3	.333	0-1	.000	1-2	.500	4-6-10	1.4	3	0.4	5	6	0	2
2012-2013	5-0	11	0-0	.000	0-0	.000	0-1	.000	1-5-6	1.2	0	0.0	0	1	0	0
3 Years	32-18	572	19-41	.463	7-19	.368	2-5	.400	22-65-87	2.7	47	1.5	51	66	3	25

MITCHELL WAS A TWO-TIME ALL-AMERICAN FOR ARMSTRONG WOMEN'S SOCCER





TYLER CARLSON

SENIOR GUARD

5-6 • RICHMOND HILL, GA.

14



2012-13

Played in all 27 games, making 20 starts for the Pirates as a junior ... Averaged 7.3 points, 2.1 rebounds and 2.4 assists per game ... Ranked eighth in the PBC in assist/turnover ratio (1.8) ... Notched a season-high 20 points at Flagler on Feb. 7 ... Scored 17 points in the Pirates' 79-36 win over Georgia Southwestern on Jan. 21 ... Reached double digit scoring in nine games ... Dished out a season-high six assists in Armstrong's 53-49 win at No. 16 USC Aiken on Feb. 23 ... Member of the PBC Presidential Honor Roll.

PREVIOUS SCHOOL

Played for two seasons at Mars Hill College ... Averaged 10.0 points and 2.7 rebounds per game as a freshman ... Dished out a season-high nine assists against Newberry on Feb. 2, 2011 ... Averaged 12.0 points, 3.5 rebounds and 2.5 assists per game as a sophomore ... Scored a career-high 24 points against Carson-Newman on Feb. 25, 2012 ... Named to the SAC All-Freshman Team in 2010-11.

HIGH SCHOOL

Played for four years at Richmond Hill HS for former Armstrong assistant coach Elizabeth Bennett ... Earned honorable mention All-State honors in 2010 ... Two-time All-Region first team honoree ... 2008 Bryan County Athlete of the Year ... Three-time team MVP ... Also a standout cross country runner.

CARLSON'S GAME HIGHS

POINTS:

20 at Flagler, 2/7/13

ASSISTS:

6 at USC Aiken, 2/23/13



PERSONAL

Born Tyler Nicole Carlson on February 11, 1992, in Mount Kisco, New York ... Home-town is Richmond Hill, Ga. ... Daughter of Glenn and Denise Carlson ... Majoring in history ... Enjoys working out, listening to music and hanging out with friends ... Lists Diana Taurasi as a favorite sports personality.

TYLER CARLSON'S CAREER STATISTICS

Year	GP-GS	MIN	FG-FGA	PCT	3PM-3PA	PCT	FTM-FTA	PCT	OR-DR-TR	RPG	TP	PPG	AST	TO	BS	ST
2012-2013	27-20	624	64-195	.328	30-91	.330	40-50	.800	23-35-58	2.1	198	7.3	24	43	3	30
1 Year	27-20	624	64-195	.328	30-91	.330	40-50	.800	23-35-58	2.1	198	7.3	24	43	3	30



CARLSON RANKED EIGHTH IN THE PBC IN ASSIST/TURNOVER RATIO IN 2012-13



STEPHENIE CONEY 12

SENIOR GUARD
5-2 • MIAMI, FLA.



2011-12

Started all 27 games for the Pirates as a junior ... Averaged 6.4 points, 1.8 rebounds and 2.8 assists per game ... Reached a season-high 14 points twice, against Columbus State on Jan. 19 and against Flagler on Feb. 16 ... Delivered season-high seven assists at Flagler on Feb. 7 ... Reached double digits in scoring eight times.

JUNIOR COLLEGE

Played for two seasons at Santa Fe CC ... Earned first-team All-Conference honors as a freshman and sophomore ... Scored 683 points in two seasons for the Saints, 14th all-time in Santa Fe CC history, and set a school record by playing in 61 games in two seasons ... Also dished out 244 assists in two seasons, seventh-most all-time.

HIGH SCHOOL

Played for Miami Horland HS ... Second-team Miami Herald All-Dade selection as a senior ... Vikings won state championships in 2009 and 2010 ... Team MVP as a junior and team captain as a senior.

CONEY'S GAME HIGHS

POINTS:

14 vs. CSU, 1/19/13 & vs. Flagler, 2/16/13

ASSISTS:

7 at Flagler, 2/7/13



PERSONAL

Born Stephenie Coney on November 25, 1991, in Miami, Fla., her hometown ... Daughter of Toscha and Steven Coney ... Majoring in elementary education ... Enjoys watching TV and listening to music ... Lists Dwayne Wade and Rajon Rondo as favorite sports personalities.

STEPHENIE CONEY' CAREER STATISTICS

Year	GP-GS	MIN	FG-FGA	PCT	3PM-3PA	PCT	FTM-FTA	PCT	OR-DR-TR	RPG	TP	PPG	AST	TO	BS	ST
2012-13	27-27	703	65-180	.361	14-60	.233	29-48	.604	5-44-49	1.8	173	6.4	76	70	0	36
1 Year	27-27	703	65-180	.361	14-60	.233	29-48	.604	5-44-49	1.8	173	6.4	76	70	0	36

CONEY DELIVERED A SEASON-HIGH SEVEN ASSISTS AT FLAGLER ON FEB. 7





BRYONNA DAVIS

SENIOR GUARD
5-8 • GARY, IND.

22



DAVIS' GAME HIGHS

2012-13

Played in 24 games, making 12 starts, for the Pirates as a junior ... Averaged 8.9 ppg and 2.7 rpg ... Scored a season-high 23 points vs. Palm Beach Atlantic on Nov. 25 ... Also notched 21 points against Eckerd on Nov. 9 ... Collected 10 or more points in nine games, including her first six as a Pirate.

PREVIOUS SCHOOL

Played for two seasons at Michigan State University ... Saw action in seven games as a sophomore in 2011-12, averaging 1.9 points per game ... Played in nine games as a freshman in 2010-11, averaging 2.3 points per game ... Scored a career-high nine points vs. Dartmouth on Dec. 18, 2010.

HIGH SCHOOL

Played for three seasons at Merrillville HS in Merrillville, Ind. ... Named Indiana Basketball Coaches Association First-Team All-State honoree and second-team AP All-State honoree as a senior ... 2010 Northwest Indiana Times and Post-Tribune Player of the Year ... Averaged 20.7 points, 3.4 rebounds, 1.9 assist and 3.6 steals as a senior for the Pirates ... Scored a school-record 559 points and 46 three-pointers in 2010 ... MVP of the Duneland Conference ... Named to the Indiana All-Star Team.

POINTS:

23 vs. Palm Beach Atlantic, 11/25/12

THREE-POINTERS MADE:

7 vs. Palm Beach Atlantic, 11/25/12



PERSONAL

Born Bryonna Davis on December 16, 1991, in Gary, Ind., her hometown ... Daughter of Kimberly Adams and Chris Thomas ... Majoring in criminal justice ... Enjoys watching television and playing video games ... Lists Steve Nash and Kevin Durant as favorite sports personalities.

BRYONNA DAVIS' CAREER STATISTICS

Year	GP-GS	MIN	FG-FGA	PCT	3PM-3PA	PCT	FTM-FTA	PCT	OR-DR-TR	RPG	TP	PPG	AST	TO	BS	ST
2012-2013	24-12	557	78-221	.353	33-123	.268	25-33	.758	17-48-65	2.7	214	8.9	49	54	1	17
1 Year	24-12	557	78-221	.353	33-123	.268	25-33	.758	17-48-65	2.7	214	8.9	49	54	1	17



DAVIS SCORED 10 OR MORE POINTS IN HER FIRST SIX GAMES AS A PIRATE



HANNA BOGNAR

SENIOR CENTER

6-2 • TATA, HUNGARY

32



2012-13

Played in 17 games, making four starts for the Pirates as a junior ... Averaged 3.2 points, 3.1 rebounds and 1.1 blocked shots per game ... Ranked seventh in the Peach Belt in blocked shots per game ... Scored a season-high 18 points on 7-of-9 shooting from the floor against Trinity Baptist on Nov. 12 ... Grabbed a season-high nine rebounds and blocked a season-high six shots against Lynn on Nov. 16 ... Member of the PBC Presidential Honor Roll.

JUNIOR COLLEGE

Played for two seasons at Seward County Community College in Kansas ... Averaged 5.2 points and 5.0 rebounds per game as a sophomore for the Saints ... Blocked a team-high 68 shots (2.19/gm), ranking 13th in the nation in that category ... Averaged 4.3 points and 4.4 rebounds as a freshman ... Blocked 88 shots (2.75/gm), ranking eighth in the nation.

IN HUNGARY

Attended Berzsenyi Dániel Evangélikus Gimnázium in Sopron, Hungary and played for coach Jozset Horvath ... Two-time All-Star and recorded the most blocked shots in the world school championships in Istanbul in 2009 ... Team won the Hungarian School Championships twice and finished runner-up a third year.

BOGNAR'S GAME HIGHS

POINTS:

18 vs. Trinity Baptist, 11/12/12

BLOCKED SHOTS:

6 vs. Lynn, 11/16/12



PERSONAL

Born Hanna Bogнар on February 29, 1992, in Kaposvar, Hungary ... Hometown is Tata, Hungary ... Daughter of Tibor Bogнар and Erika Sill ... Father, Tibor, played basketball professionally in Hungary ... Majoring in psychology ... Enjoys listening to music, traveling and talking with her family through Skype ... Lists Candace Parker and Kevin Durant as favorite sports personalities.

HANNA BOGNAR'S CAREER STATISTICS

Year	GP-GS	MIN	FG-FGA	PCT	3PM-3PA	PCT	FTM-FTA	PCT	OR-DR-TR	RPG	TP	PPG	AST	TO	BS	ST
2012-2013	17-4	153	21-46	.457	0-0	.000	12-16	.750	17-36-53	3.1	54	3.2	3	9	19	3
1 Year	17-4	153	21-46	.457	0-0	.000	12-16	.750	17-36-53	3.1	54	3.2	3	9	19	3

BOGNAR RANKED SEVENTH IN THE PBC IN BLOCKED SHOTS PER GAME





TORI KLEWICKI-McNUTT

SENIOR GUARD

5-8 • DEWITT, MICH.

24



2012-13

Played in all 27 games, starting 22, for the Pirates as a junior ... Led the team in scoring and ranked 16th in the Peach Belt at 11.6 ppg ... Also averaged 4.1 rpg ... Hit 54-of-152 three-point shots (35.5%), ranking fifth in the PBC in three-point baskets made per game and 63rd in NCAA Division II in three-point field goal percentage ... Scored a season-high 24 points on 9-of-12 shooting from the floor and 4-of-7 three-point shooting at Augusta State on Jan. 12 ... Also scored 24 points at No. 4 Clayton State on Jan. 3 ... Grabbed eight rebounds at Clayton State and at Georgia College on March 2 ... Notched five steals against North Georgia on Dec. 15 ... Member of the PBC Presidential Honor Roll.

PREVIOUS SCHOOL

Played for two seasons at Grand Valley State University ... Played in three games as a sophomore with 11 points and nine rebounds ... Played in all 28 games as a freshman, averaging 4.4 points and 1.3 rebounds per game ... Scored a career-high 13 points against Saginaw Valley State on Jan. 6, 2011.

KLEWICKI-McNUTT'S GAME HIGHS

POINTS:

24 at Augusta State, 1/12/13

REBOUNDS:

8 at Clayton, 1/3/13 & at GC, 3/2/13

HIGH SCHOOL

Played for two seasons at DeWitt HS ... Averaged 12.8 points and 4.2 rebounds per game as a junior for the Panthers, earning All-Conference, All-State and BCAM All-State honors ... Named to the Lansing State Journal Dream Team ... Also played at East Lansing HS for the state runner-up team in 2007-08.



PERSONAL

Born Tori Klewicki-McNutt on July 30, 1992, in Lansing, Mich. ... Hometown is DeWitt, Mich. ... Daughter of Heather and Vic McNutt ... Majoring in criminal justice ... Grandfather, Tom Klewicki, played basketball at Michigan State ... Enjoys listening to country music and being outdoors ... Lists Manu Ginobili and Michael Jordan as favorite sports personalities.

TORI KLEWICKI-McNUTT'S CAREER STATISTICS

Year	GP-GS	MIN	FG-FGA	PCT	3PM-3PA	PCT	FTM-FTA	PCT	OR-DR-TR	RPG	TP	PPG	AST	TO	BS	ST
2012-2013	27-22	786	113-283	.399	54-152	.355	31-43	.721	21-91-112	4.1	311	11.5	44	34	6	22
1 Year	27-22	786	113-283	.399	54-152	.355	31-43	.721	21-91-112	4.1	311	11.5	44	34	6	22





DEE HAYWARD

SENIOR GUARD

5-8 • DEWITT, MICH.

10



2012-13

Played in 26 games for the Pirates as a sophomore ... Averaged 2.6 points, 1.9 rebounds and 1.5 assists per game ... Tied her career high with 12 points against Saginaw Valley State on Dec. 30 ... Also collected 10 points against Anderson (SC) on Nov. 17 ... Dished out six assists at Francis Marion on Feb. 25 ... Member of the PBC Presidential Honor Roll.

2011-12

Played in 25 games as a freshman, averaging 4.8 points, 1.8 rebounds and 2.2 assists per game ... Shot 49.4 percent from the floor (39-of-79) and 73.9 percent from the free throw line (34-of-46) ... Scored a season-high 12 points against Montevallo on Jan. 19 ... Also notched 10 points at Columbus State on Jan. 12 and against Allen on Jan. 28 ... Dished out a season-high six assists at Georgia Southwestern on Jan. 14.

IN SCOTLAND

Attended Leeds Metropolitan University in Scotland ... Member of the Great Britain U-20 National Team, playing in nine games at the 2011 U-20 European Championship Division A and averaging 24.7 minutes, 5.6 points and 2.6 rebounds per game ... Helped Great Britain to an 8th place finish out of the 16 teams competing in Division A.

HAYWARD'S GAME HIGHS

POINTS:

12 vs. Saginaw Valley State, 12/30/12
vs. Montevallo, 1/19/12



HIGH SCHOOL

Attended Barrhead High in Glasgow, Scotland ... Played club for Saint Mirren, where she was the Player of the Year and team MVP in 2009, as well as the club's best defensive player in 2008.

PERSONAL

Born Deanne Hayward on July 4, 1991, in Aberdeen, Scotland ... Hometown is Glasgow, Scotland ... Daughter of Marianne Hayward ... Majoring in physical therapy ... Enjoys playing basketball and horse riding ... Lists Usain Bolt as a favorite sports personality.

DEE HAYWARD'S CAREER STATISTICS

Year	GP-GS	MIN	FG-FGA	PCT	3PM-3PA	PCT	FTM-FTA	PCT	OR-DR-TR	RPG	TP	PPG	AST	TO	BS	ST
2011-2012	25-0	478	39-79	.494	7-24	.292	34-46	.739	11-35-46	1.8	119	4.8	55	71	10	23
2012-13	26-0	341	21-59	.356	10-32	.313	16-18	.889	20-29-49	1.9	68	2.6	39	46	6	17
2 Years	51-0	819	60-138	.435	17-56	.304	50-64	.781	31-64-95	1.9	187	3.7	94	117	16	40

HAYWARD WAS A MEMBER OF THE GREAT BRITAIN U-20 NATIONAL TEAM





JUNIORS AMBER HOWELL AND AMBER JOHNSON

AMBER HOWELL

JUNIOR FORWARD

5-11 • ATHENS, GA.

14



JUNIOR COLLEGE

Played for two seasons at Central Georgia Technical College for Armstrong head coach Fala Bullock.

HIGH SCHOOL

Played for four years at Prince Avenue Christian School in Athens, Ga. ... Named team MVP in 2009-10 for the Wolverines.

PERSONAL

Born Amber Celeste Howell on April 29, 1993, in Queens, N.Y. ... Hometown is Athens, Ga. ... Daughter of Tiheema and Raymon Howell ... Majoring in liberal arts Enjoys cooking and watching TV ... Lists Kevin Garnett and Charles Barkley as favorite sports personalities.

AMBER JOHNSON

JUNIOR GUARD

5-8 • DECATUR, GA.

30



JUNIOR COLLEGE

Played for two seasons for Central Georgia Technical College for Armstrong head coach Fala Bullock ... Named to the President's List.

HIGH SCHOOL

Played for four seasons at Salem HS.

PERSONAL

Born Amber Johnson on February 28, 1993, in Atlanta, Ga. ... Hometown is Conyers, Ga. ... Daughter of Terron Johnson ... Father, Terron, played football at Georgia Tech ... Majoring in liberal arts ... Enjoys playing basketball, shopping and talking with friends ... Lists Kevin Durant, Floyd Mayweather Jr. and Kyrie Irving as favorite sports personalities.



HOWELL AND JOHNSON EACH PLAYED FOR COACH BULLOCK AT CENTRAL GEORGIA TECH

JUNIOR ADONIAH LEWIS AND FRESHMAN BRIGITTA BARTA



ADONIAH LEWIS

JUNIOR GUARD

5-9 • AUCKLAND, NEW ZEALAND

15



JUNIOR COLLEGE

Played for one season at Hillsborough Community College ... Averaged 9.3 points and 3.1 rebounds per game as a sophomore in 2011-12 ... Also played at Ellsworth CC in 2010-11 ... Averaged 5.3 points and 1.4 rebounds per game.

IN NEW ZEALAND

Member of the New Zealand U20 National Team ... Attended Mount Albert Grammar School ... Led the Lions to fifth place in New Zealand and named one of the Top 10 national tournament players.

PERSONAL

Born Adoniah Lanie Heimataura Lewis on July 30, 1991, in Hamilton, New Zealand ... Hometown is Auckland, New Zealand ... Daughter of Vaniva Lewis ... Majoring in English ... Enjoys touch rugby and dancing ... Lists Rajon Rondo as a favorite sports personality.

BRIGITTA BARTA

FRESHMAN FORWARD

6-0 • BUDAPEST, HUNGARY

0



IN HUNGARY

Attended Konyves Kalman Gimnazium in Hungary ... Attended University of Debrecen ... Member of the Hungary U16 national team.

PERSONAL

Born Brigitta Barta on March 4, 1993, in Budapest, Hungary, her hometown ... Daughter of Antal Barta and Anna Bartane Mate ... Majoring in economics ... Enjoys listening to music and hanging out with friends ... Lists LeBron James as a favorite sports personality.

LEWIS AND BARTA EACH WERE MEMBERS OF THEIR NATIONAL TEAM YOUTH PROGRAMS





FRESHMEN NICHOLE FINDURA AND LAURA REDMOND

NICHOLE FINDURA

FRESHMAN CENTER

6-2 • STOCKBRIDGE, GA.

25



HIGH SCHOOL

Played for three years at Woodland HS in Stockbridge, Ga. ... Also excelled in volleyball and track and field for the Wolfpack ... National Merit Scholar and a member of the National Honor Society ... Holds the school record in the high jump.

PERSONAL

Born Nichole Anne Findura on October 13, 1994, in Vermilion, Ohio ... Hometown is Stockbridge, Ga. ... Daughter of Colleen and Michael Findura ... Mother, Colleen, played basketball at Kent State and brother, Alex, plays football at Georgia State ... Majoring in nursing ... Enjoys playing volleyball, reading and helping the environment .. Lists Elena Delle Donne as a favorite sports personality.

LAURA REDMOND

FRESHMAN GUARD

5-9 • ATLANTA, GA.

31



HIGH SCHOOL

Played for three years at St. Pius X Catholic School in Atlanta ... Averaged 4.7 points and 4.3 rebounds per game as a senior for the Lions ... St. Pius X captured the 2012-13 GHSA AAA State Championship..

PERSONAL

Born Laura Ashley Redmond on September 15, 1995, in Atlanta, Ga., her hometown ... Daughter of James and Patrice Smith Redmond ... Majoring in middle grades education ... Enjoys coloring, listening to music and hanging out with friends ... Lists Cam Newton, Skylar Diggins, Dwayne Wade and J.J. Watt as favorite sports personalities.



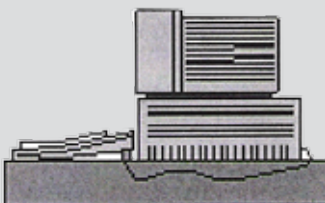
REDMOND WON A STATE CHAMPIONSHIP WITH ST. PIUS X CATHOLIC SCHOOL



FOLLOW US ON SOCIAL MEDIA !

YOUR HOME FOR ARMSTRONG ATHLETICS ON THE INTERNET
ARMSTRONGPIRATES.COM

ARMSTRONG ATLANTIC STATE UNIVERSITY TO BRING YOU PIRATE BASKETBALL THROUGH WEBCASTING IN 2011-12 !



The Armstrong Atlantic State athletic department will continue to bring home all of the exciting women's basketball action in 2013-14 right to your computer as the Pirates stream live audio and video of all 11 home games over the Internet.

Fans will be able to catch all of this season's action from the official Website of Armstrong Athletics, armstrongpirates.com, and ustream.tv/armstrongpirates, the Pirates' home of internet webcasting through UStream !

Armstrong debuted its Internet broadcasting system in 2001 with incredible success as every home men's and women's basketball game, volleyball match, the majority of the Pirates' baseball, softball and women's soccer games were available last season.

For more information about the Armstrong Web broadcast, visit the Armstrong Athletics Web Site or contact Director of Sports Communications Chad Jackson at Chad.Jackson@armstrong.edu





Since its founding in 1935 - more than 75 years ago - Armstrong Atlantic State University has continued to develop to meet the Savannah community's educational needs. From its first location in Armstrong House in downtown Savannah to its current home on a scenic 268-acre lot off of Abercorn, the university has become one of the finest educational institutions in the Southeastern United States. Last year, Armstrong celebrated its 75th anniversary as a premier institution of higher education in the Coastal Empire.

Armstrong Junior College was established by the Mayor of Savannah and other public officials in 1935. Housed in the beautiful and historic Armstrong House, a gift to the city from the family of George F. Armstrong, Armstrong Junior College grew over the years to occupy eight additional buildings in the Forsyth Park and Monterey Square areas.

In 1959, as Armstrong College of Savannah, it became a two-year unit of the University System. The Board of Regents conferred four-year status on Armstrong in 1964 and the college moved to a 250-acre location, a gift from Donald Livingston and the Mills B. Lane Foundation, in December of 1965. Additional buildings joined the eight original structures as Armstrong added professional and graduate programs and tripled in size.

In July of 1996, the Board of Regents voted to rename the college to Armstrong Atlantic State University to reflect its mission and identity. The university's reputation of excellence is still evident in its dedication to students, with a supportive environment.

Armstrong Atlantic State University was fully accredited as a senior institution by the Southern Association of Colleges and Schools in December, 1968, with accreditation retroactive to January 1, 1968, and was last reaccredited in December, 2002.

The university offers more than seventy-five academic programs and majors in the College of Arts and Sciences, College of Health Professions, College of Education and School of Computing. The academic community includes approximately 7,650 students



and more than 400 faculty members. Enrollment has more than doubled in the last 20 years, from 3,700 students in 1990 to its current number.

Across campus, evidence of the university's growth can be found in its facilities. Recently completed projects include the \$31 million Windward Commons, a 567-bed, freshman-dedicated residence hall completed over the summer, which brings the number of students living on campus to more than 1,400, and the new \$16 million, 60,180 square-foot Armstrong Student Union that was built entirely through student fees and opened in fall of 2010. A new Learning Commons was completed in spring 2013 bringing advanced learning technology to the campus.

The athletic department of Armstrong Atlantic State University is housed in the Armstrong Sports Center, completed in 1995. The Sports Center includes offices for the physical education department, training room and weight room areas, basketball courts, indoor track and offices for coaches and athletic department personnel. The building played host to the Peach Belt Conference's basketball tournament in 1998 and 1999 and hosts several in-season tournaments each year. A women's fieldhouse for soccer and softball was completed in the spring of 2007 and renovation of the Sports Center weight room was completed in 2013.

Armstrong sponsors 11 intercollegiate sports and is a charter member of the Peach Belt Conference, formed in 1991. Women's soccer and women's golf debuted in 2005 and men's cross country was reinstated in 2009, joining men's and women's basketball, volleyball, baseball, men's and women's tennis, men's golf and softball as sports that Armstrong sponsors. In 2012-13, Armstrong women's tennis teams captured its eighth NCAA Division II National Championship, the most among Division II institutions.

Continuing a mission begun in 1935, Armstrong Atlantic State University today serves a rich gamut of traditional and non-traditional students. Forty-three percent of Armstrong's student body are from the Savannah-Chatham area, while others come from around the state, nation and world. All have come to Savannah to experience and thrive on the campus of one of the fastest developing higher learning institutions in the nation - to be a part of Armstrong Atlantic State University.





DR. LINDA M. BLEICKEN UNIVERSITY PRESIDENT

Dr. Linda M. Bleicken joined Armstrong in 2009 after serving at Georgia Southern for 19 years. She is the seventh Armstrong president and the first woman to lead the institution since the establishment of Armstrong Junior College in 1935.

A woman with deep roots in Iowa farm country, Bleicken began her career at Georgia Southern as an assistant professor of management in 1990. Over the following years she would serve as acting chair of the department of management, associate dean of the College of Business Administration, vice president for student affairs, acting provost and vice president for academic affairs and lastly provost, a position she held since 2005.

A marketing major from Georgia State University who graduated magna cum laude, Bleicken's experiences in the business arena include a foray into real estate in Atlanta as owner and manager of residential properties and serving as a sales representative for Innerface International. She also spent two years in marketing research for BellSouth and Brittain Associates, both in Atlanta.

It was her experiences in marketing research that led her back to higher education. In 1987, she chose to continue her education in a university campus, this time as a teaching instructor at her alma mater, Georgia State University. Three years later she earned her academic credentials, a master's and Ph.D. in management, once again from Georgia State.

A long-time resident of Savannah—she commuted to Georgia Southern all those years—Bleicken knows and cares deeply about Savannah and the Coastal Georgia region. She has served on the Ossabaw Island Foundation Board since 2007 and been involved with the Savannah Downtown Neighborhood Association.



LISA SWEANY ATHLETIC DIRECTOR

Lisa M. Sweany begins her third season as Director of Athletics at Armstrong Atlantic State University for the 2013-14 academic year.

The Pirates had another outstanding athletic year in 2012-13, capturing a second consecutive PBC Commissioner's Cup while also claiming the school's third PBC Presidential Academic Award. Armstrong sent 8 of 11 teams to the NCAA postseason, capturing the school's 11th NCAA National Championship with women's tennis and also achieving its best-ever finish in the Learfield Sports Director's Cup standings.

Sweany joined Armstrong in July of 2011, coming from fellow NCAA Division II school Grand Valley State, where she served as assistant AD and then senior associate AD for ten years. With the Lakers, Sweany was responsible for budget, personnel and facilities management. Her other duties included direct supervision of seven coaches, overseeing game and event operations, as well as management of all athletics personnel. In addition, Sweany coordinated all aspects of compliance and eligibility for more than 500 student athletes.

Prior to joining GVSU, she served at Tri-State University in Angola, Indiana, starting in 1995 as athletics facilities director. During her five-year stint at Tri-State, she served in various capacities of increasing responsibility, including assistant basketball coach, head coach of softball and associate athletics director, a position she was named to in March 1995.

Sweany is a member of the National Association of Collegiate Women Athletics Administrators and the National Association of Collegiate Directors of Athletics, as well as the immediate past president of the CEFMA (Collegiate Event and Facility Management Association). She is also a member of the NCAA Division II Championships Committee.

She holds a master's degree in physical education with a concentration in sports management from Ball State University in Muncie, Indiana and a bachelor's degree with honors in business administration with a concentration in accounting from Tri-State University in Angola, Indiana.





ARMSTRONG ATHLETIC STAFF



**JENNIFER
RUSHTON**
ASSOCIATE AD FOR
COMPLIANCE & STUDENT SERVICES



**CHAD
JACKSON**
DIRECTOR OF SPORTS
COMMUNICATIONS



**MICHAEL
SMOOSE**
ASSISTANT AD FOR
BUSINESS & MARKETING



**ADAM
TOM**
ASSISTANT AD FOR FACILITIES
AND GAME OPERATIONS



**DR. DONALD
ANDERSON**
COMPLIANCE & STUDENT
SERVICES CONSULTANT



**DR. WILL
LYNCH**
FACULTY ATHLETIC
REPRESENTATIVE



**CAIVAN
CULBERSON**
INTERIM HEAD BASEBALL
COACH



**MICHAEL
SERGI**
HEAD MEN'S CROSS
COUNTRY COACH



**EVANS
DAVIS**
INTERIM HEAD MEN'S
BASKETBALL COACH



**FALA
BULLOCK**
HEAD WOMEN'S
BASKETBALL COACH



**MICHAEL
BUTLER**
HEAD MEN'S AND
WOMEN'S GOLF COACH



**TED
EVANS**
HEAD SOFTBALL
COACH



**ERIC
FAULCONER**
HEAD WOMEN'S
SOCCER COACH



**SIMON
EARNSHAW**
HEAD MEN'S & WOMEN'S
TENNIS COACH



**WILL
CONDON**
HEAD VOLLEYBALL
COACH



**ALLI
ARBOGAST**
ASSISTANT VOLLEYBALL
COACH



ARMSTRONG SENT EIGHT TEAMS TO THE NCAA CHAMPIONSHIPS IN 2012-13

ALUMNI ARENA @ ARMSTRONG SPORTS CENTER



The Armstrong Atlantic State University's athletic department prides itself on having one of the finest athletic facilities not only in the conference, but in the region as well.

Armstrong's Sports Center, completed in July of 1995, immediately became a top basketball complex by hosting the 1998 and 1999 Peach Belt Conference basketball tournaments.

This 82,000 square foot multi-purpose building provides expanded academic offerings in spacious, modern surroundings. A recently expanded and updated Armstrong weight room and fitness center over the summer of 2013 features all-new equipment including power racks, a unilateral leg press machine, a unilateral row machine, glut/ham machines, new flooring and olympic lifting.

Armstrong's athletic teams play home events in a 4,000 seat arena that contains theatre-type seating for all spectators, and also plays host to a wide variety of social and sporting events.



PIRATES @ ALUMNI ARENA

YEAR	RECORD
1995-96	5-8
1996-97	8-5
1997-98	6-6
1998-99	9-6
1999-2000	6-6
2000-01	7-8
2001-02	7-6
2002-03	13-0
2003-04	12-2
2004-05	11-2
2005-06	9-5
2006-07	11-3
2007-08	12-1
2008-09	9-6
2009-10	6-7
2010-11	5-9
2011-12	9-8
2012-13	10-7
18 YEARS	155-95

ALUMNI ARENA WOMEN'S BASKETBALL HIGHS

Team

Most Points: 104

Francis Marion vs. Armstrong, 2/27/10

Most Points, Both Teams, Overtime: 200

Augusta St. (102) vs. Clayton St. (98), 2/19/99

Most Points, Both Teams, Regulation: 185

Francis Marion (104) vs. Armstrong (81), 2/27/10

Largest Victory Margin: 49

Francis Marion (92) vs. Clayton State (43), 2/24/98

Largest Victory Margin, Armstrong: 45

Armstrong (90) vs. Allen (45), 1/6/10

Armstrong (76) vs. Allen (31), 11/27/12

Individual

Most Points: 43

Demetria McClouden vs. Florida Tech, 12/3/98

Most Rebounds: 24

Mauri Wells vs. Edward Waters, 11/29/11

Most Points by Opposing Player: 41

JaToya Kemp (UNCP), 2/24/10

Most Rebounds by Opposing Player: 17

Tisha London (UNCP), 1/28/98



ARMSTRONG SPORTS CENTER EVENTS

- 1998 & 1999 PBC Basketball Championships
- Georgia Special Olympics
- Georgia HS Basketball Regional Tournament
- Atlanta Hawks training camp
- Chamber of Commerce South Side Socials
- 2001 5A Region Championships (Featuring No. 1 NBA pick Kwame Brown)
- 2012 Georgia JUCO Women's Final Four
- Annual Armstrong Fall Graduation Ceremonies
- Various Youth Athletic Events such as Gymnastics, Taekwondo, Baton Twirling & Cheerleading

ARMSTRONG WOMEN'S BASKETBALL IS 155-95 ALL-TIME AT ALUMNI ARENA





Armstrong athletic teams benefit from the fine athletic training staff, headed by medical director Dr. John George and head athletic trainer Ken Tessier.

Armstrong's training room, part of the Armstrong Sports Center, sits adjacent to the fitness center and across the hall from the Pirate locker rooms. The room offers the most modern and advanced equipment to help players deal with injuries and rehabilitation.

ARMSTRONG ATHLETIC TRAINING CENTER ADMINISTRATION



DR. JOHN GEORGE
TEAM PHYSICIAN

Dr. John George begins his second year in the role of team physician for the Pirates. A 1983 graduate of the Medical College of Georgia, Dr. George is board certified by the America Board of Orthopedic Surgery and is a member of the AMA, the National Board of Medical Examiners, the Georgia Medical Society, the Medical Association of Georgia, the American Academy of Orthopedic Surgeons and the Georgia Orthopedic Society.



KEN TESSIER
HEAD ATHLETIC TRAINER

Ken Tessier begins his third year as the head athletic trainer at Armstrong for the 2013-14 athletic year. Tessier joined the Pirates from Savannah State University, where he was the head athletic trainer for four years. Prior to that he was the athletic trainer at St. Andrew's school in Savannah. He was also employed by the University of South Carolina Aiken, where he was the assistant athletic trainer. Tessier has also held various internship positions which included the Providence Bruins of the American Hockey League and with the Curry College football and hockey teams.

A native of North Smithfield, R.I., Tessier earned his bachelor's of science degree in physical education with a concentration in sports medicine from Endicott College in 2002. He has been nationally board certified since June 2003 by the NATABOC and is licensed to practice athletic training in the state of Georgia. He is also CPR/AED certified and a member of the NATA, SEATA and GATA organizations.



CAROLINE BRIF
ASSISTANT
ATHLETIC TRAINER



DOUG HARGER
GRADUATE ASSISTANT
ATHLETIC TRAINER



KELSEY CURLEN
GRADUATE ASSISTANT
ATHLETIC TRAINER



ALLYSON RILEY
GRADUATE ASSISTANT
ATHLETIC TRAINER





CLAYTON STATE

Thursday, January 2, 2014 5:30 p.m.
Alumni Arena @ Armstrong Sports Center

Location: Morrow, GA
Enrollment: 7,000
Colors: Blue and Orange
Conference: Peach Belt
President: Dr. Thomas Hynes
Athletic Director: Carl McAloose
Home Court (capacity):
 Clayton State Athletics Center (1,200)
2012-13 Record: 32-1
2012-13 PBC Record: 19-0 (1st West)
Letterwinners Returning/Lost: 7/7
Head Coach: Dennis Cox
Career Record: 245-50
Record at Clayton: 245-50, 9 years
Coach's Office Phone: (678) 466-4674
Assistant Coach:
 Kaleena Coleman, Danielle Rector
SID: Gid Rowell
SID Phone: (678) 466-4681
SID FAX: (678) 466-4699
Web Address: claytonstatesports.com
Series Record: Clayton leads 26-10
Last Meeting: Clayton 76-44 (3/7/13)

COLUMBUS STATE

Saturday, January 18, 2014 1:30 p.m.
Frank G. Lumpkin Jr. Center, Columbus, Ga.

Location: Columbus, GA
Enrollment: 8,300
Colors: Red, White and Blue
Conference: Peach Belt
President: Dr. Tim Mescon
Athletic Director: Jay Sparks
Home Court (capacity):
 Frank G. Lumpkin Jr. Center (4,500)
2012-13 Record: 16-11
2012-13 PBC Record: 12-7 (2nd West)
Letterwinners Returning/Lost: 4/7
Head Coach: Jonathan Norton
Career Record: 194-130
Record at CSU: 64-45, 4 years
Coach's Office Phone: (706) 568-2010
Assistant Coach:
 Quacy Timmons
SID: Cara Lynn Teague
SID Phone: (706) 569-3434
SID FAX: (706) 569-3435
Web Address: csucougars.com
Series Record: Columbus State leads 29-20
Last Meeting: Columbus State 72-68 (1/19/13)

FLAGLER

Thursday, February 6, 2014 5:30 p.m.
Alumni Arena @ Armstrong Sports Center

Location: St. Augustine, FL
Enrollment: 2,678
Colors: Red and Yellow
Conference: Peach Belt
President: Dr. William T. Abare, Jr.
Athletic Director: Jud Damon
Home Court (capacity):
 Flagler Gym (1,760)
2012-13 Record: 15-13
2012-13 PBC Record: 10-9 (3rd East)
Letterwinners Returning/Lost: 10-3
Head Coach: Erika Lang-Montgomery
Career Record: 33-74
Record at Flagler: 33-74, 4 years
Coach's Office Phone: (904) 819-6388
Assistant Coaches:
 Joe Harding, Shamesha Smith
SID: John Jordan
SID Phone: (904) 819-6252
SID FAX: (904) 810-2369
Web Address: flaglerathletics.com
Series Record: Armstrong leads 21-4
Last Meeting: Armstrong 63-56 (2/16/13)

FRANCIS MARION

Saturday, January 4, 2014 1:30 p.m.
Smith University Center, Florence, S.C.

Thursday, January 16, 2014 5:30 p.m.
Alumni Arena @ Armstrong Sports Center

Location: Florence, SC
Enrollment: 4,093
Colors: Red, White and Blue
Conference: Peach Belt
President: Dr. Fred Carter
Athletic Director: Murray Hartzler
Home Court (capacity):
 Smith University Center (3,027)
2012-13 Record: 13-13
2012-13 PBC Record: 7-12 (5th East)
Letterwinners Returning/Lost: 5/6
Head Coach: Kate Glusko
Career Record: 40-49
Record at FMU: 40-40, 3 years
Coach's Office Phone: (843) 661-1249
Assistant Coaches:
 Karlton Grant, Zaria B. Williams
SID: Michael G. Hawkins
SID Phone: (843) 661-1222
SID FAX: (843) 661-4645
Web Address: fmupatriots.com
Series Record: FMU leads 23-17
Last Meeting: Armstrong 75-61 (2/25/13)

GEORGIA COLLEGE

Saturday, March 1, 2014 1:30 p.m.
Alumni Arena @ Armstrong Sports Center

Location: Milledgeville, GA
Enrollment: 6,500
Colors: Hunter Green and Navy Blue
Conference: Peach Belt
President: Dr. Steve Dorman
Athletic Director: Wendell Staton
Home Court (capacity):
 Centennial Center (4,071)
2012-13 Record: 12-14
2012-13 PBC Record: 8-11 (5th West)
Letterwinners Returning/Lost: 7/7
Head Coach: Maurice Smith
Career Record: 38-43
Record at GC: 38-43, 3 years
Coach's Office Phone: (478) 445-1788
Assistant Coach:
 Toby Wagoner, Huguette Yanga
SID: Al Weston
SID Phone: (478) 445-1779
SID FAX: (478) 445-1790
Web Address: gesubobcats.com
Series Record: GC leads 46-24
Last Meeting: Armstrong 71-69 (3/2/13)

GRU AUGUSTA

Saturday, January 11, 2014 5:30 p.m.
Alumni Arena @ Armstrong Sports Center

Location: Augusta, GA
Enrollment: 9,557
Colors: Blue and Silver Grey
Conference: Peach Belt
President: Dr. Ricardo Azziz
Athletic Director: Clint Bryant
Home Court (capacity):
 George A. Christenberry Fieldhouse (2,216)
2012-13 Record: 21-6
2012-13 PBC Record: 14-5 (1st East)
Letterwinners Returning/Lost: 5/8
Head Coach: Nate Teymer
Career Record: 131-106
Record at GRUA: 41-39, 3 years
Coach's Office Phone: (706) 731-7915
Assistant Coach:
 Courtney Boyd
SID: Joey Warren
SID Phone: (706) 731-7925
SID FAX: (706) 737-1782
Web Address: jaguarsroar.com
Series Record: GRU Augusta leads 30-29
Last Meeting: Augusta State 66-42 (1/31/13)





GEORGIA SOUTHWESTERN

Monday, January 20, 2014 5:30 p.m.
The Storm Dome, Americus, Ga.

Location: Americus, GA
Enrollment: 3,300
Colors: Navy Blue and Old Gold
Conference: Peach Belt
President: Dr. Kendall A. Blanchard
Athletic Director: Jaelyn Donovan
Home Court (capacity):
The Storm Dome (2,200)
2012-13 Record: 3-23
2012-13 PBC Record: 1-18 (7th West)
Letterwinners Returning/Lost: 2/10
Head Coach: Kelly Britsky
Career Record: 138-233
Record at GSW: 54-107, 6 years
Coach's Office Phone: (229) 931-2231
Assistant Coach:
Kelly Turman
SID: Keith Michlig
SID Phone: (229) 931-2217
SID FAX: (229) 931-2143
Web Address: gswcanes.com
Series Record: Armstrong leads 16-11
Last Meeting: Armstrong 79-36 (1/21/13)

LANDER

Wednesday, January 8, 2014 5:30 p.m.
Finis Horne Arena, Greenwood, S.C.

Wednesday, February 12, 2014 5:30 p.m.
Finis Horne Arena, Greenwood, S.C.
Location: Greenwood, SC
Enrollment: 3,000
Colors: Royal Blue and Gold
Conference: Peach Belt
President: Dr. Daniel W. Ball
Athletic Director: Dr. Jeff May
Home Court (capacity):
Finis Horne Arena (2,500)
2012-13 Record: 12-16
2012-13 PBC Record: 6-13 (t6th East)
Letterwinners Returning/Lost: 8/6
Head Coach: Kevin Pederson
Career Record: 257-121
Record at LU: 155-91, 8 years
Coach's Office Phone: (864) 388-8257
Assistant Coach:
DeCole Shoemate
SID: Bob Stoner
SID Phone: (864) 388-8962
SID FAX: (864) 388-8889
Web Address: landerbearcats.com
Series Record: Armstrong leads 25-17
Last Meeting: Lander 50-45 (2/14/13)

MONTEVALLO

Saturday, January 25, 2014 1:30 p.m.
Alumni Arena @ Armstrong Sports Center

Location: Montevallo, AL
Enrollment: 3,200
Colors: Purple and Gold
Conference: Peach Belt
President: Dr. John W. Stewart III
Athletic Director: Jim Herlihy
Home Court (capacity):
BankTrust Arena (2,200)
2012-13 Record: 17-12
2012-13 PBC Record: 12-7 (t2nd West)
Letterwinners Returning/Lost: 6/4
Head Coach: Cindy Hilbrich
Career Record: 28-28
Record at Montevallo: 28-28, 2 years
Coach's Office Phone: (205) 665-6599
Assistant Coach:
Manisha Redus
SID: Wesley Hallman
SID Phone: (205) 665-6592
SID FAX: (205) 665-6587
Web Address: montevallofalcons.com
Series Record: Montevallo leads 3-1
Last Meeting: Montevallo 71-58 (1/26/13)

UNC PEMBROKE

Thursday, January 23, 2013 5:30 p.m.
Alumni Arena @ Armstrong Sports Center

Saturday, February 1, 2013 1:30 p.m.
Jones Athletic Complex, Pembroke, N.C.

Location: Pembroke, NC
Enrollment: 6,269
Colors: Black and Gold
Conference: Peach Belt
Chancellor: Dr. Kyle Carter
Athletic Director: Dick Christy
Home Court (capacity):
Jones Athletic Complex (3,000)
2012-13 Record: 12-16
2012-13 PBC Record: 6-13 (t6th East)
Letterwinners Returning/Lost: 6/7
Head Coach: John Haskins
Career Record: 122-129
Record at UNCP: 122-129, 9 years
Coach's Office Phone: (910) 521-6345
Assistant Coach:
Kapica Davis
SID: Todd Anderson
SID Phone: (910) 521-6371
SID FAX: (910) 521-6551
Web Address: uncpbraves.com
Series Record: Armstrong leads 25-13
Last Meeting: Armstrong 71-61 (2/20/13)

NORTH GEORGIA

Saturday, December 14, 2013 1:30 p.m.
Memorial Hall Gymnasium, Dahlonega, Ga.

Location: Dahlonega, GA
Enrollment: 5,222
Colors: Royal Blue and White
Conference: Peach Belt
President: Dr. Bonita Jacobs
Athletic Director: Lindsay Reeves
Home Court (capacity):
Memorial Hall Gymnasium (2,500)
2012-13 Record: 14-15
2012-13 PBC Record: 10-9 (4th West)
Letterwinners Returning/Lost: 6/5
Head Coach: Buffie Burson
Career Record: 395-217
Record at NGA: 395-217, 21 Years
Coach's Office Phone: (706) 867-2849
Assistant Coaches:
Lucas Hargrove, Katie Lewis
SID: Lee Glenn
SID Phone: (706) 867-3250
SID FAX: (706) 867-2865
Web Address: ungathletics.com
Series Record: Armstrong leads 19-12
Last Meeting: North Georgia 74-63 (12/15/12)

USC AIKEN

Saturday, February 8, 2014 5:30 p.m.
Convocation Center, Aiken, S.C.

Saturday, February 22, 2014 5:30 p.m.
Alumni Arena @ Armstrong Sports Center

Location: Aiken, SC
Enrollment: 3,250
Colors: Cardinal, Navy and White
Conference: Peach Belt
Chancellor: Dr. Sandra Jordan
Athletic Director: Randy Warrick
Home Court (capacity):
Convocation Center (3,600)
2012-13 Record: 22-8
2012-13 PBC Record: 13-6 (2nd East)
Letterwinners Returning/Lost: 4/7
Head Coach: Mike Brandt
Career Record: 469-246
Record at USCA: 216-117, 11 years
Coach's Office Phone: (803) 641-3491
Assistant Coach:
Cameron Sealey
SID: Brent Hager
SID Phone: (803) 641-3252
SID FAX: (803) 641-3759
Web Address: pacersports.com
Series Record: Series tied 22-22
Last Meeting: Armstrong 53-49 (2/23/13)





YOUNG HARRIS

Monday, December 16, 2013 11:00 a.m.
Alumni Arena @ Armstrong Sports Center

Location: Young Harris, GA
Enrollment: 1,035
Colors: Purple and White
Conference: Peach Belt
President: Cathy Cox
Athletic Director: Randy Dunn
Home Court (capacity):
YHC Basketball Arena (1,000)
2012-13 Record: 13-13
2012-13 PBC Record: 7-12 (6th West)
Letterwinners Returning/Lost: 7/7
Head Coach: Brenda Paul
Career Record: 488-457
Record at Young Harris: 47-29, 3 years
Coach's Office Phone: (706) 379-5298
Assistant Coach:
Matt Stearsman
SID: Michael MacEachern
SID Phone: (706) 379-5106
SID FAX: (706) 379-4304
Web Address: yhcathletics.com
Series Record: Series tied 1-1
Last Meeting: Young Harris 70-45 (12/17/12)

COKER

Sunday, December 1, 2013 2:00 p.m.
Alumni Arena @ Armstrong Sports Center

Location: Hartsville, S.C.
Enrollment: 1,300
Colors: Navy and Yellow
Conference: Conference Carolinas
President: Dr. Robert Wyatt
Athletic Director: Dr. Lynn Griffin
Home Court (capacity):
McArthur Physical Education Center (1,300)
2012-13 Record: 18-11
2012-13 CC Record: 14-8 (4th)
Letterwinners Returning/Lost: 7/4
Head Coach: Jenny Finora
Career Record: 34-48
Record at Coker: 34-48, 3 years
Coach's Office Phone: (843) 383-8074
Assistant Coach:
Vic Finora
SID: Christian Stryker
SID Phone: (843) 383-8068
SID FAX: (843) 383-8167
Web Address: cokercobras.com
Series Record: Armstrong leads 4-2
Last Meeting: Armstrong 77-75 (11/30/94)

ECKERD

Saturday, December 21, 2013 3:00 p.m.
McArthur Physical Education Center

Location: St. Petersburg, Fla.
Enrollment: 1,840
Colors: Teal, Navy, Black and White
Conference: Sunshine State
President: Donald R. Eastman III
Athletic Director: Dr. Bob Fortosis
Home Court (capacity):
McArthur Physical Education Center (1,300)
2012-13 Record: 14-12
2012-13 SSC Record: 9-7 (t3rd)
Letterwinners Returning/Lost: 6/6
Head Coach: Paul Honsinger
Career Record: 95-96
Record at Eckerd: 95-96, 7 years
Coach's Office Phone: (727) 864-8586
Assistant Coach:
Sarah Gaffney
SID: Ben Schlesselman
SID Phone: (727) 864-8242
SID FAX: (727) 864-8968
Web Address: eckerdtritons.com
Series Record: Armstrong leads 6-1
Last Meeting: Armstrong 68-57 (11/9/12)

LIMESTONE

Saturday, November 23, 2013 2:00 p.m.
Alumni Arena @ Armstrong Sports Center

Location: Gaffney, SC
Enrollment: 3,400
Colors: Blue and Gold
Conference: Conference Carolinas
President: Dr. Walt Griffin
Athletic Director: Michael Cerino
Home Court (capacity):
Timken Center (1,500)
2012-13 Record: 27-4
2012-13 CC Record: 21-1 (1st)
Letterwinners Returning/Lost: 10/6
Head Coach: Corey Fox
Career Record: 145-132
Record at Limestone: 145-132, 10 years
Coach's Office Phone: (864) 488-4572
Assistant Coaches:
Melissa DeVore, Tasha Taylor
SID: Ernest Meyers
SID Phone: (864) 488-4367
SID FAX: (864) 902-0714
Web Address: golimestonesaints.com
Series Record: Series tied 1-1
Last Meeting: Limestone 82-75 (11/15/09)

TAMPA

Saturday, November 16, 2013 Noon
Bob Martinez Sports Center

Location: Tampa, FL
Enrollment: 6,900
Colors: Red, Black and Gold
Conference: Sunshine State
President: Dr. Ronald L. Vaughn
Athletic Director: Larry Marfise
Home Court (capacity):
Bob Martinez Sports Center (3,432)
2012-13 Record: 17-14
2012-13 SSC Record: 3-13 (9th)
Letterwinners Returning/Lost: 7/2
Head Coach: Richard Schmidt
Career Record: 604-301
Record at Tampa: 590-288, 31 years
Coach's Office Phone: (813) 257-3781
Assistant Coach:
Justin Pecka
SID: Alesia Wilson
SID Phone: (813) 257-3444
SID FAX: (813) 253-6288
Web Address: tampaspartans.com
Series Record: Tampa leads 3-1
Last Meeting: Tampa 80-72 (12/19/09)

BENEDICT

Saturday, November 9, 2013 6:30 p.m.
Benjamin E. Mays HRC Arena

Location: Columbia, SC
Enrollment: 2,984
Colors: Purple and Gold
Affiliation: NCAA Division II
Conference: SIAC
Web Address: www.benedicttigers.com
Series Record: First Meeting

COLUMBIA (S.C.)

Wednesday, November 13, 2013 6:00 p.m.
Alumni Arena @ Armstrong Sports Center

Location: Columbia, SC
Enrollment: 1,300
Colors: Purple and White
Affiliation: NAIA
Web Address: www.gokoalas.com
Series Record: Armstrong leads 4-1
Last Meeting: Armstrong 95-59 (12/14/10)





ARMSTRONG WOMEN'S BASKETBALL MEDIA SERVICES

The Office of Sports Communications at Armstrong Atlantic State University thank you for your interest in Armstrong women's basketball. Should you need any further assistance in covering the Pirates during the 2013-14 season, please do not hesitate to contact us:

Office of Sports Communications
Armstrong Atlantic State University
Chad Jackson, Director
11935 Abercorn Street
Savannah, GA 31419
Phone: (912) 344-3114
Fax: (912) 344-3422
email: Chad.Jackson@armstrong.edu

Thanks again for your coverage of the Pirates throughout the season.

Chad Jackson
Director of Sports Communications

MEDIA CREDENTIALS

Media credentials for photo and press are not needed, however seating on press row is limited. Requests for press row seating must be made in advance to Director of Sports Communications Chad Jackson via fax, email or phone at least two (2) days prior to each contest.

RADIO BROADCASTS

Oposing teams wishing to broadcast from Alumni Arena at the Armstrong Sports Center are welcome, however lines are limited. If you are planning on broadcasting an upcoming game, please contact Chad Jackson at least two (2) days prior to your contest.

PRE-GAME INTERVIEWS

Requests for interviews with Armstrong Atlantic State University players and coaches should be directed to Director of Sports Communications Chad Jackson. Arrangements will be made for players to call media members if a phone interview is requested - it is Armstrong Athletic Department policy not to publicize student-athlete's home phone numbers.

GAME SERVICES

The Office of Sports Communications staff will furnish media representatives with game programs, pre-game notes and statistics, in addition to halftime and final game statistics and play-by-play.



PRESS AREA

The designated press area for Alumni Arena at the Armstrong Sports Center are on either side of the court. Seats are marked prior to each game and we ask that members of the media adhere to seating arrangements during the contest. Photo areas are at the baseline of either basket, but not directly behind the basket. The balconies above each basket are also accessi-

ble for photographers - an elevator is located at the south-east corner of the Arena.

Two press row phone lines are available for media members or visiting radio broadcasters. The numbers are (912) 927-1384 and (912) 927-1429. Wireless internet is also available with prior notice.

POST-GAME INTERVIEWS

The Armstrong Atlantic State University women's basketball locker rooms are closed to the media. Head coach Fala Bullock and requested players will be brought out for postgame interviews following a 10-minute cooling off period.

ARMSTRONG LOCAL MEDIA COVERAGE

Print:

Savannah Morning News
Beat Writer: Nathan Dornitz
Phone: (912) 652-0350
Fax: (912) 525-0796

The Inkwell
Armstrong Campus Newspaper
Phone: (912) 344-3252
Fax: (912) 344-3475

Broadcast:

WSAV-TV 3 (NBC)
Sports Director: Ken Slats
Phone: (912) 644-6842
WTOG-TV 11 (CBS)
Sports Director: Rick Snow and Ken Griner
Phone: (912) 234-1111
WJCL-TV 22 (ABC) / WTGS-TV 28 (Fox)
Sports Director: Frank Sulkowski and Stephanie Frerotte
Phone: (912) 921-2222



FALA BULLOCK IS THE EIGHTH HEAD COACH IN ARMSTRONG WOMEN'S BASKETBALL HISTORY

2012-13 SEASON REVIEW



The Armstrong Atlantic State women's basketball squad finished the 2012-13 season with a 13-14 overall record and an 8-11 mark in the Peach Belt Conference, returning to the PBC Tournament for the first time since 2008-09.

The Pirates used a five-game win streak late in the season to earn a spot into the postseason, a run that included a 53-49 win at No. 16-ranked USC Aiken on February 23rd. Earlier in the month, the Pirates knocked off then-No. 5 USC Aiken, 69-67, in overtime at home in a contest that represented the first Top 5-ranked opponent that Armstrong women's basketball has knocked off in program history.

Armstrong was not into the tournament until the final game of the season, a 71-69 win at Georgia College that capped the win streak and sent the Pirates to Columbus. The Pirates were the No. 4 seed out of the East Division.

Junior Mauri Wells returned to the Pirates lineup after missing most of November to once again lead the Peach Belt Conference in rebounding, av-



ARMSTRONG JUNIOR MAURI WELLS LED THE PBC IN REBOUNDING FOR A SECOND STRAIGHT SEASON, AVERAGING 9.7 REBOUNDS PER GAME. SHE IS THE THIRD PIRATE TO ACCOMPLISH THE FEAT.

eraging 9.7 rebounds per game. Wells joins Zandrique Cason (2001-02) and Kaneetha Gordon (2007-08) as Pirates to lead the league in rebounding in back-to-back seasons. She will enter the 2013-14 season on pace to become the school's all-time rebounding leader.

Junior transfer Tori Klewicki-McNutt led the Pirates in scoring in 2012-13, averaging 11.5 points per game while knocking down two three-pointers per game, good for fifth in the league.

Senior Demisha Mills averaged 10.1 points per game, second-best on the team, in her final season with the Pirates, while senior Briana McFarland was named to the PBC's All-Academic Team for a second-consecutive season. Seniors Karolina Rykowska (6.7 points, 4.5 rebounds per game) and Marissa Rimbart also wrapped up their Armstrong careers.

In April, head coach Matt Schmidt resigned after five years at the helm of the Pirates to accept an assistant coaching position at Duquesne University.

Armstrong hired Fala Bullock, the head women's basketball coach at Central Georgia Technical College, in June to take over the Pirate women's basketball program.

Armstrong returns eight letterwinners and four starters for the 2013-14 season.



JUNIOR TORI KLEWICKI-McNUTT (FAR LEFT) LED THE PIRATES IN SCORING IN 2012-13, AVERAGING 11.5 POINTS PER GAME. SENIOR DEMISHA MILLS (LEFT) AVERAGED 10.1 POINTS AND 5.9 REBOUNDS PER GAME IN HER SENIOR SEASON FOR THE PIRATES.

ARMSTRONG BEAT No. 5 USC AIKEN, 69-67, IN OT ON FEB. 9 FOR ITS FIRST WIN OVER A TOP 5 OPPONENT





2012-13 RESULTS AND STATISTICS

2012-13 ARMSTRONG ATLANTIC STATE GAME RESULTS

OVERALL: 13-14 • HOME: 10-7 • AWAY: 3-6 • NEUTRAL: 0-1 • PBC: 8-11

DATE	OPPONENT	SCORE	HIGH SCORER	HIGH REBOUNDER
11/9/12	ECKERD	W 68-57	Bryonna Davis (21)	Bognar and Mills (5)
11/12/12	TRINITY BAPTIST	W 79-37	Hanna Bognar (18)	Karolina Rykowska (9)
11/16/12	@ LYNN	L 76-54	Bryonna Davis (15)	Hanna Bognar (9)
11/17/12	@ ANDERSON (SC)	W 79-68	Bryonna Davis (20)	Bognar and Mills (7)
11/25/12	PALM BEACH ATLANTIC	W 77-64	Bryonna Davis (23)	Karolina Rykowska (7)
11/27/12	ALLEN	W 76-31	Bryonna Davis (12)	Carreras and Rimbart (7)
12/15/12	* NORTH GEORGIA	L 74-63	Demisha Mills (18)	Rykowska and Mills (7)
12/17/12	* YOUNG HARRIS	L 70-45	Karolina Rykowska (16)	Karolina Rykowska (12)
12/30/12	SAGINAW VALLEY STATE	L 82-64	Bryonna Davis (15)	Wells and Davis (4)
1/3/13	* at Clayton State	L 71-54	Tori Klewicki-McNutt (24)	Karolina Rykowska (7)
1/5/13	* FRANCIS MARION	W 94-72	Karolina Rykowska (18)	Mauri Wells (13)
1/10/13	* LANDER	L 67-55	Tori Klewicki-McNutt (17)	Mauri Wells (10)
1/12/13	* at Augusta State	L 75-70	Tori Klewicki-McNutt (24)	Mauri Wells (8)
1/19/13	* COLUMBUS STATE	L 72-68	Stephenie Coney (14)	Three with 7
1/21/13	* GEORGIA SOUTHWESTERN STATE	W 79-36	Tyler Carlson (17)	Karolina Rykowska (9)
1/26/13	* at Montevallo	L 71-58	Mauri Wells (11)	Mauri Wells (10)
1/31/13	* AUGUSTA STATE	L 66-42	Tori Klewicki-McNutt (7)	Mauri Wells (9)
2/2/13	* at UNC Pembroke	L 81-78 2ot	Demisha Mills (17)	Wells and Mills (10)
2/7/13	* at Flagler	L 73-63	Tyler Carlson (20)	Wells and Mills (8)
2/9/13	* USC AIKEN	W 69-67 ot	Mills & Klewicki-McNutt (15)	Mauri Wells (11)
2/14/13	* at Lander	L 50-45	Tyler Carlson (12)	Demisha Mills (14)
2/16/13	* FLAGLER	W 63-56	Tori Klewicki-McNutt (19)	Mauri Wells (21)
2/20/13	* UNC PEMBROKE	W 71-61	Karolina Rykowska (20)	Demisha Mills (10)
2/23/13	* at USC Aiken	W 53-49	Mauri Wells (16)	Mauri Wells (12)
2/25/13	* at Francis Marion	W 75-61	Tori Klewicki-McNutt (16)	Mauri Wells (16)
3/2/13	* at Georgia College	W 71-69	Tori Klewicki-McNutt (18)	Mauri Wells (10)
3/7/13	# vs. Clayton State	L 76-44	Tori Klewicki-McNutt (9)	Mauri Wells (12)

* - Peach Belt Conference Games

@ - 2012 Fairfield Inn & Suites Pirate Classic

- 2013 Peach Belt Conference Championships

2012-13 PIRATE CUMULATIVE STATISTICS

Player	GP/GS	MIN	FG-FGA	PCT	3PMG-3PA	PCT	FT-FTA	PCT	OR-DR-TR	RPG	TP	PPG	AST	TO	BS	ST
Tori Klewicki-McNutt	27/22	786	113-283	.399	54-152	.355	31-43	.721	21-91-112	4.1	311	11.5	44	34	6	22
Demisha Mills	27/27	784	110-239	.460	4-13	.308	48-119	.403	48-112-160	5.9	272	10.1	57	79	16	35
Bryonna Davis	24/12	557	78-221	.353	33-123	.268	25-33	.758	17-48-65	2.7	214	8.9	49	54	1	17
Tyler Carlson	27/20	624	64-195	.328	30-91	.330	40-50	.800	23-35-58	2.1	198	7.3	66	47	3	30
Karolina Rykowska	26/9	537	60-150	.400	15-45	.333	39-47	.830	44-74-118	4.5	174	6.7	24	43	18	18
Stephenie Coney	27/27	703	65-180	.361	14-60	.233	29-48	.604	5-44-49	1.8	173	6.4	76	70	0	36
Mauri Wells	19/14	542	67-170	.394	3-20	.150	28-35	.800	68-116-184	9.7	165	8.7	18	27	12	19
Candace Carreras	23/0	273	21-64	.328	7-29	.241	23-41	.561	19-30-49	2.1	72	3.1	20	26	6	13
Dee Hayward	26/0	341	21-59	.356	10-32	.313	16-18	.889	20-29-49	1.9	68	2.6	39	46	6	17
Hanna Bognar	17/4	153	21-46	.457	0-0	.000	12-16	.750	17-36-53	3.1	54	3.2	3	9	19	3
Marissa Rimbart	10/0	77	12-27	.444	0-0	.000	5-6	.833	8-14-22	2.2	29	2.9	1	2	3	3
Brianna McFarland	9/0	73	10-24	.417	1-5	.200	0-0	.000	1-7-8	0.9	21	2.3	4	0	0	2
Angelia Hill	1/0	14	2-6	.333	0-0	.000	2-2	1.000	0-2-2	2.0	6	6.0	1	1	0	1
Morgan Mitchell	5/0	11	0-0	.000	0-0	.000	0-1	.000	1-5-6	1.2	0	0.0	0	1	0	0
TOTALS	27	5475	644-1664	.387	171-570	.300	298-459	.649	355-712-1067	39.5	1757	65.1	402	447	90	216



THE PIRATES WON FIVE OF THEIR FIRST SIX GAMES TO START THE 2012-13 SEASON

THE PEACH BELT CONFERENCE



Entering its 24th year of existence in 2013-14, the Peach Belt Conference has cemented its status as one of the elite Division II conferences in the nation. Since its inception in 1990-91, the Peach Belt has developed a consistent history of excellence which continues to this day with 33 national championships and 28 national finalists.

Starting with only two championships in 1991, men's and women's basketball, the conference has expanded to 15 championship sports with the addition of men's and women's track and field in the 2013.

The conference traces its roots back to November of 1988 when 11 schools first met in Greenville, S.C. to form a Division II conference. Following a second meeting on Dec. 3, 1989, five of those 11 schools, plus two others, formed the Peach Belt and begin play in fall 1990.

The Peach Belt was less than a year old before capturing a national championship. The Columbus State golf team took the honor by winning the 1992 national crown, the first of three golf championships the Cougars own. One year later, the Lander men's tennis team began their record-breaking run of eight straight national titles, the first PBC dynasty. Since then, USCA men's golf has won three straight national titles from 2004-06.

The PBC is in the midst of another dynasty as the Armstrong women's tennis team captured the league's 33rd national championship in the spring of 2013. The Pirates have now won an NCAA-best eight women's tennis national titles, tied with the Lander men's tennis team for most by a PBC program, and have claimed five of the last six national championships.

Armstrong's achievement was the highlight to one of the most successful seasons in league history. Peach Belt teams advanced to the national championship round of competition in nine of our 15 sports, earning 51% of all NCAA regional spaces available. 51 PBC teams reached NCAA regional action and league teams hosted eight of nine NCAA regional tournaments. The USC Aiken baseball team, Clayton State women's basketball team, Armstrong women's soccer, women's tennis and men's tennis were all ranked #1 in the nation during the season.

The seven charter members of the conference were Armstrong Atlantic State University, Columbus State University, Francis Marion University, Georgia



College, Lander University, USC Aiken and USC Upstate. The name Peach Belt Athletic Conference was adopted in January of 1990 and modified to Peach Belt Conference in May of 2000.

Augusta State joined the conference in 1991 and UNC Pembroke became the ninth member on July 1, 1992. They were followed by Kennesaw State University on July 1, 1994, Clayton State University on July 1, 1995 and the University of North Florida on July 1, 1997. Kennesaw State and North Florida departed for the Division I ranks in 2005, USC Upstate did the same in 2007, and the conference welcomed in North Georgia College & State University in 2005 and Georgia Southwestern State University in 2006. In 2009-10, the Peach Belt added Montevallo and Flagler. For the 2012-13 season, the league is expanding once again with the addition of Young Harris College, giving the Peach Belt 14 members for the first time in its history.

David Brunk was named the second PBC commissioner in May of 2007. Brunk replaced Marvin Vanover, who was the first PBC commissioner from 1991 to 2007. Brunk is charged with continuing the strong growth of the conference in its second era. Dr. Fred Carter, president of Francis Marion University, returns for the second of his two-year term as president of the Peach Belt.

The conference currently holds championships in 15 sports, seven for men and eight for women. They are men's and women's cross country, men's and women's soccer, volleyball, men's and women's basketball, men's and women's tennis, baseball, softball, men's and women's golf and men's and women's track and field.

PEACH BELT CONFERENCE 33 NATIONAL CHAMPIONSHIPS

BASEBALL

Kennesaw State (1994, 1996)
Columbus State (2002)

MEN'S BASKETBALL
Kennesaw State (2003-04)

MEN'S GOLF
Columbus State (1992, 1994, 1997)
Francis Marion (2003)
USC Aiken (2004, 2005, 2006)

MEN'S TENNIS
Lander (1991-2000)
Armstrong (2008-09, 2012)

WOMEN'S BASKETBALL
Clayton State (2010-11)

WOMEN'S SOCCER
Kennesaw State (2003)

WOMEN'S TENNIS
Armstrong (1995-96, 2005, 2008-10,
2012-13)

SOFTBALL
Kennesaw State (1995, 1996)

PBC QUICK FACTS

ADDRESS: 503 Blackburn Drive
Martinez, GA 30907

FOUNDED: December 3, 1989

PHONE NUMBER: (706) 860-8499

FAX NUMBER: (706) 650-8113

WEBSITE: www.peachbelt.com

COMMISSIONER: David Brunk

MEDIA RELATIONS: Ken Gerlinger

COMPLIANCE: Diana Kling

ARMSTRONG HAS REACHED THE PBC TITLE GAME THREE TIMES IN SCHOOL HISTORY





2012-13 PEACH BELT CONFERENCE FINAL STANDINGS



EAST DIVISION

SCHOOL	PBC GAMES	DIVISION GAMES	ALL GAMES
Augusta State	14-5 .737	9-3 .750	21-6 .778
USC Aiken	13-6 .684	8-4 .667	22-8 .733
Flagler	10-9 .526	8-2 .800	15-13 .536
Armstrong	8-11 .421	6-6 .500	13-14 .481
Francis Marion	7-12 .368	5-7 .417	13-13 .500
UNC Pembroke	6-13 .316	3-9 .250	12-16 .429
Lander	6-13 .316	4-8 .333	9-17 .346

WEST DIVISION

SCHOOL	PBC GAMES	DIVISION GAMES	ALL GAMES
Clayton State	19-0 1.000	12-0 1.000	32-1 .970
Columbus State	12-7 .632	7-5 .583	16-11 .593
Montevallo	12-7 .632	8-4 .667	17-12 .586
North Georgia	10-9 .526	5-7 .417	14-15 .483
Georgia College	8-11 .421	5-7 .417	12-14 .462
Young Harris	7-12 .368	4-8 .333	13-13 .500
Georgia Southwestern	1-18 .053	1-11 .083	3-23 .115

2012-13 PBC STATISTICAL LEADERS

SCORING

PLAYER (TEAM)	G	FG	3FG	FT	PTS	PPG
1. Ladondra Johnson (YHC)	17	150	0	41	341	20.1
2. Drameka Griggs (Clayton)	33	244	25	139	652	19.8
3. Jaymee Carnes (NGA)	27	193	24	71	481	17.8
4. Taylor Beverly (Mvallo)	29	215	0	71	501	17.3
5. Williesha Spencer (Flagler)	28	169	35	100	473	16.9
6. Shanteona Keys (GC)	26	152	54	80	438	16.8
7. Precious Elkins (Lander)	25	153	0	79	385	15.4
8. Daniela Tarailo (USCA)	30	158	97	46	459	15.3
9. Ashley Judge (Lander)	25	130	70	37	367	14.7
10. Mimi Hill (NGA)	29	160	15	74	409	14.1

REBOUNDING

PLAYER (TEAM)	RPG
1. Wells (Armstrong)	9.7
2. Carnes (NGA)	9.4
3. Elkins (Lander)	9.1
4. Beverly (Montevallo)	8.8
5. Nasiloski (Montevallo)	8.4
6. Lindsey (Flagler)	7.9
7. Mason (Flagler)	7.7
8. Johnson (YHC)	7.6
9. Mobley (Clayton)	7.5
10. Hill (NGA)	7.4

FIELD GOAL PERCENTAGE

PLAYER (TEAM)	FG%
1. Johnson (YHC)	.593
2. Mobley (Clayton)	.548
3. Griggs (Clayton)	.539
4. Roach (FMU)	.515
5. Robertson (YHC)	.508
6. Kemp (UNC)	.500

ASSISTS

PLAYER (TEAM)	APG
1. Smith (YHC)	6.3
2. Hill (USCA)	5.9
3. Moore-Smith (MVallo)	5.5
4. White (ASU)	5.2
5. Robinson (FMU)	4.6
6. Spencer (Flagler)	4.3

3-PT FG MADE

PLAYER (TEAM)	3PG FT%
1. Tarailo (USCA)	3.2
2. Judge (Lander)	2.8
3. Robinette (YHC)	2.5
4. Keys (GC)	2.1
5. Klewicki-McNutt (Arm)	2.0
6. Pinkett (FMU)	1.9

2012-13 ALL-PEACH BELT TEAM

FIRST TEAM

Taylor Beverly, Montevallo
Jaymee Carnes, North Georgia
Drameka Griggs, Clayton State
Williesha Spencer, Flagler
Daniela Tarailo, USC Aiken

SECOND TEAM

Brittany Hill, USC Aiken
Mimi Hill, North Georgia
Tanchelle Hollingsworth, Augusta State
Shanteona Keys, Georgia College
Kayla Mobley, Clayton State
Taren White, Columbus State

THIRD TEAM

Taylor Ayers, Augusta State
Stephanie Huffman, North Georgia
Shacamra Jackson, Clayton State
Jazmine Kemp, UNC Pembroke

PLAYER OF THE YEAR: Drameka Griggs, Clayton State
DEFENSIVE PLAYER OF THE YEAR: Shacamra Jackson, Clayton State
FRESHMAN OF THE YEAR: Kayla Pryce, Clayton State
COACH OF THE YEAR: Nate Teymer, Augusta State

2012-13 PLAYERS OF THE WEEK

Nov. 12	Jasmine McSwain	Georgia Southwestern
Nov. 19	Taylor Beverly	Montevallo
Nov. 26	Ladondra Johnson	Young Harris
Dec. 4	Drameka Griggs	Clayton State
Dec. 10	Kayla Harris	USC Aiken
Dec. 18	Kayla Harris	USC Aiken
Jan. 7	Drameka Griggs	Clayton State
Jan. 14	Ladondra Johnson	Young Harris
Jan. 22	Drameka Griggs	Clayton State
Jan. 28	Taren White	Columbus State
Feb. 4	Daniela Tarailo	USC Aiken
Feb. 11	Taren White	Columbus State
Feb. 18	Drameka Griggs	Clayton State
Feb. 25	Mimi Hill	North Georgia
Mar. 4	Williesha Spencer	Flagler



PEACH BELT CONFERENCE YEAR-BY-YEAR



1990-1991

TEAM	PBC	YEAR
1. USCA	9-3	24-6
2. USCS	7-5	18-10
GC	7-5	18-11
4. <i>Armstrong</i>	5-7	10-14
Lander	5-7	20-8
FMU	5-7	17-12
7. Columbus	3-9	8-17

FIRST TEAM All-PBC
Tisha England, USCA
Jametria Hannah, USCS
Leslie Morgan, FMU
Sherita Ballard, GC
Deedra Howard, USCS

SECOND TEAM All-PBC
Angelina Tate, USCA
Bernadette Hill, GC
Toni Bell-Yon, Armstrong
Melissa Lewis, Lander
Mary Jackson, FMU

PLAYER OF THE YEAR
Tisha England, USCA

COACH OF THE YEAR
Tammy Holder, USCS

1991-1992

TEAM	PBC	YEAR
1. Augusta	12-2	23-6
GC	12-2	22-7
3. USCA	9-5	18-11
4. FMU	6-8	18-12
5. <i>Armstrong</i>	5-9	14-13
USCS	5-9	12-16
7. Columbus	4-10	10-16
8. Lander	3-11	13-15

FIRST TEAM All-PBC
Renee Rice, Armstrong
Tisha England, USCA
Mary Jackson, FMU
Jametria Hannah, USCS
Lorain Truesdale, LU

ROOKIE OF THE YEAR
Yolanda Oliver, Armstrong

PLAYER OF THE YEAR
Renee Rice, Armstrong

COACH OF THE YEAR
Lowell Barnhart, AC

SECOND TEAM All-PBC
Allison Barry, GC
Tracey Strange, AC
Kay Sanders, AC
Angie Davis, CC
Robin Edwards, AC
Fenissa Rice, FMU

1992-1993

TEAM	PBC	YEAR
1. USCS *	16-0	28-3
2. Augusta	14-2	24-5
3. <i>Armstrong</i>	10-6	16-10
4. GC	8-8	17-11
5. Lander	7-9	11-16
6. Columbus	6-10	12-15
7. Pembroke	5-11	10-17
8. FMU	3-13	11-17
9. USCA	3-13	8-18
Kennesaw	0-0	19-11

* NCAA participant

FIRST TEAM All-PBC
Deedra Howard, USCS
Lorian Truesdale, LU
Jeanette Polk, AC
LaTanya Sandifer, GC
Valerie Scott, USCS
Kay Sanders, AC

ROOKIE OF THE YEAR
April Haskins, CC

PLAYER OF THE YEAR
Deedra Howard, USCS

COACH OF THE YEAR
Peggy Sells, USCS

SECOND TEAM All-PBC
April Haskins, CC
Yolanda Oliver, Armstrong
Tracey Strange, AC
Iris Bethea, PSC
Jennifer Teeple, Armstrong
Vivian Edwards, CC

1993-1994

TEAM	PBC	YEAR
1. USCS *	15-1	27-4
2. Columbus	12-4	20-9
3. <i>Armstrong</i>	11-5	17-9
4. Augusta	9-7	16-11
5. GC	8-8	16-12
USCA	8-8	15-12
7. Pembroke	4-12	6-19
8. Lander	3-13	9-18
9. FMU	2-14	6-21
Kennesaw	0-0	18-11

* NCAA participant

FIRST TEAM All-PBC
Valerie Scott, USCS
Iris Bethea, PSC
Jeanette Polk, AC
Kathleen Shriver, CC
Dwana Gardner, AC
Kim Moody, GC

ROOKIE OF THE YEAR
Meredith Sisson, USCS

PLAYER OF THE YEAR
Valerie Scott, USCS

COACH OF THE YEAR
Jay Sparks, CC

SECOND TEAM All-PBC
Oni Tyler, CC
Yolanda Oliver, Armstrong
Sonya Cato, USCA
Amy Totten, GC
Jennifer Teeple, Armstrong
Paula Blackwell, USCS

1994-1995

TEAM	PBC	YEAR
1. USCS *	14-4	25-6
Augusta	14-4	19-9
Columbus	14-4	21-7
4. Kennesaw	12-6	15-12
5. FMU	8-10	11-15
6. <i>Armstrong</i>	8-10	12-17
7. USCA	7-11	12-15
GC	7-11	11-17
9. Pembroke	5-13	8-18
10. Lander	1-17	4-22

* NCAA participant

FIRST TEAM All-PBC
Dwana Gardner, AC
Heather Abrams, USCS
Nicole Smith, Armstrong
Sharon Lee, CC
Sarah McAllister, KSC
Meredith Sisson, USCS

ROOKIE OF THE YEAR
Lawanna Monday, AC

PLAYER OF THE YEAR
Dwana Gardner, AC

COACH OF THE YEAR
Lowell Barnhart, AC

SECOND TEAM All-PBC
Amanda Manning, GC
Kisha Conway, FMU
Barbara Hester, CC
Shawn Blassingame, USCA
Hayley Lystlund, AC
Faye Wright, LU

1995-1996

TEAM	PBC	YEAR
1. GC*	14-4	21-9
2. FMU	13-5	18-9
3. KSC	12-6	17-12
4. Augusta	11-7	19-9
5. USCS	10-8	14-13
6. Pembroke	9-9	15-12
Columbus	9-9	13-15
8. <i>Armstrong</i>	7-11	9-18
9. Lander	3-15	9-15
10. USCA	2-16	3-23
Clayton	0-0	13-15

* NCAA participant

FIRST TEAM All-PBC
Hayley Lystlund, AC
Kisha Conway, FMU
Andrea Cox, PSC
Alicia Wilson, GC
Sarah McAllister, KSC
Lawanna Monday, AC

ROOKIE OF THE YEAR
Carrie Long, CC

PLAYER OF THE YEAR
Sarah McAllister, KSC

COACH OF THE YEAR
Wes Moore, FMU

SECOND TEAM All-PBC
Christy Walker, GC
Rachel Garner, PSC
Heather Abrams, USCS
Jennifer Puckett, FMU
Christa Vaughan, Armstrong
Faye Wright, LU

1996-1997

TEAM	PBC	YEAR
1. KSU*	17-1	30-2
2. FMU*	14-4	21-8
3. GCSU*	13-5	23-8
4. CSU	11-7	17-11
5. ASU	10-8	18-9
<i>Armstrong</i>	10-8	14-13
7. USCS	5-13	11-17
Lander	5-13	8-19
9. USCA	4-14	7-21
10. UNCP	1-17	1-25
Clayton	0-0	14-13

* NCAA participant

FIRST TEAM All-PBC
Que Gilliam, CSU
Christy Walker, GC&SU
Joanna Cuprys, KSU
Lawanna Monday, ASU
Sarah McAllister, KSU
Chiffonia Adderson, FMU

ROOKIE OF THE YEAR
Chiffonia Adderson, FMU

PLAYER OF THE YEAR
Joanna Cuprys, KSU

COACH OF THE YEAR
Colby Tilley, KSU

SECOND TEAM All-PBC
Tammy Smith, USCS
Jennifer Brabson, FMU
Christale Spain, USCA
Alicia Wilson, GC&SU
Christy Bromley, ASU
Faye Wright, LU

1997-1998

NORTH		
TEAM	PBC	YEAR
1. FMU*	15-1	30-3
2. ASU	9-7	18-10
3. USCS	7-9	14-13
Lander	7-9	12-14
5. USCA	6-10	10-17
6. UNCP	0-16	5-22

SOUTH		
TEAM	PBC	YEAR
1. CSU*	16-0	25-6
2. GCSU	11-5	19-8
3. KSU	10-6	18-10
4. UNF	6-10	11-17
5. <i>Armstrong</i>	5-11	12-16
6. Clayton	4-12	14-15

* NCAA participant

FRESHMAN OF THE YEAR
Damita Bullock, FMU

PLAYER OF THE YEAR
Jennifer Brabson, FMU

COACH OF THE YEAR
Jay Sparks, CSU

FIRST TEAM All-PBC
Dion Thornton, KSU
Toeshia Campfield, CSU
Chiffonia Adderson, FMU
Tamarra Brown, GC&SU
Que Gilliam, CSU
Jennifer Brabson, FMU

SECOND TEAM All-PBC
Lawanna Monday, ASU
Tracy Davis, GC&SU
Janet Chadwick, KSU
Christale Spain, USCA
Tammy Smith, USCS
Cindy Koone, LU

1998-1999

NORTH		
TEAM	PBC	YEAR
1. FMU*	16-0	27-3
2. Lander *	11-5	20-10
3. ASU	7-9	13-15
USCA	7-9	16-11
5. USCS	3-13	6-21
6. UNCP	0-16	5-22

SOUTH		
TEAM	PBC	YEAR
1. KSU*	14-2	28-4
2. CSU	12-4	25-7
3. GCSU	9-7	17-11
4. UNF	7-9	18-10
5. <i>Armstrong</i>	6-10	13-15
6. Clayton	4-12	9-18

* NCAA participant

FRESHMAN OF THE YEAR
Ginnell Curtis, UNCP

PLAYER OF THE YEAR
Jennifer Brabson, FMU

COACH OF THE YEAR
Sheila Rhodes, LU

FIRST TEAM All-PBC
Chiffonia Adderson, FMU
Jennifer Brabson, FMU
Rima Petronyte, KSU
Justyna Stanioch, KSU
Dion Thornton, KSU
Christy Wright, FMU

SECOND TEAM All-PBC
Sylvia Allen, CSU
Ginnell Curtis, UNCP
Quintina Harris, GC&SU
Reagan Housch, CSU
Cindy Koone, LU
Demetria McClouden, Armstrong

RENEE RICE WAS THE PBC PLAYER OF THE YEAR IN 1991-92





PEACH BELT CONFERENCE YEAR-BY-YEAR

1999-2000

NORTH		
TEAM	PBC YEAR	
1. FMU*	13-3 25-8	
2. Lander *	12-4 22-8	FIRST TEAM All-PBC
3. USCA	7-9 15-12	Chiffonia Adderson, FMU
4. ASU	5-11 10-15	Jennifer Brabson, FMU
5. UNCP	3-13 11-15	Rima Brazenas, KSU
6. USCS	2-14 5-21	Jackie Entzminger, LU Amie Kane, KSU Kinesha Harden, CSU
SOUTH		
1. KSU*	14-2 25-5	
2. CSU*	12-4 28-8	SECOND TEAM All-PBC
3. UNF	10-6 16-11	Joya Collier, Clayton
4. GCSU	10-6 17-10	Jami Cornwell, USCA
5. Clayton	4-12 8-18	Ginnell Curtis, UNCP
6. Armstrong	4-12 7-19	Janell Gerk, USCA
* NCAA participant		
PLAYER OF THE YEAR		
Rima Brazenas, KSU		
COACH OF THE YEAR		
Phil Stern, USCA		

2000-2001

NORTH		
TEAM	PBC YEAR	
1. USCA	14-2 22-7	
2. FMU *	13-3 24-7	
3. UNCP	6-10 14-13	FIRST TEAM All-PBC
4. ASU	5-11 12-15	Zandrique Cason, Armstrong
5. Lander	2-14 6-17	Jami Cornwell, USCA
6. USCS	2-14 7-19	Kinesha Harden, CSU Amie Kane, KSU Shemika Turner, GC&SU Christy Wright, FMU
SOUTH		
1. CSU *	16-0 32-1	
2. GCSU	11-5 21-7	
3. KSU	10-6 19-8	SECOND TEAM All-PBC
4. UNF	8-8 14-13	Abby Boone, CSU
5. Armstrong	5-11 10-16	Ginnell Curtis, UNCP
6. Clayton	4-12 6-20	Monica Dajksler, KSU
* NCAA participant		
CO-PLAYERS OF THE YEAR		
Kinesha Harden, CSU Amie Kane, KSU		
FRESHMAN OF THE YEAR		
Kia Manuel, USCS		
COACH OF THE YEAR		
Jay Sparks, CSU		

2001-2002

NORTH		
TEAM	PBC YEAR	
1. USCA *	16-3 22-6	
2. FMU	12-7 16-11	
3. UNCP	12-7 18-9	FIRST TEAM All-PBC
4. ASU	5-14 10-17	Skye Barber, UNF
5. USCS	4-15 6-21	Denisha Ferguson, KSU
6. Lander	1-18 2-25	Ginnell Curtis, UNCP Jami Cornwell, USCA Julie Szabo, USCA Betsy Foy, GC&SU
SOUTH		
1. KSU	13-6 17-10	
2. UNF	13-6 20-9	SECOND TEAM All-PBC
3. CSU	12-7 21-11	Zandrique Cason, Armstrong
4. GCSU *	11-8 19-12	Jennifer Lance, UNCP
5. Clayton	8-11 13-15	Christy Thomas, FMU
6. Armstrong	7-12 11-18	Mikel Taylor, UNF
* NCAA participant		
PLAYER OF THE YEAR		
Skye Barber, UNF		
FRESHMAN OF THE YEAR		
Apyrl Brown, Clayton		
COACH OF THE YEAR		
Phil Stern, USC Aiken		

2002-2003

NORTH		
TEAM	PBC YEAR	
1. ASU *	13-6 19-10	
2. USCA	9-10 19-13	
3. USCS	7-12 13-15	FIRST TEAM All-PBC
4. Lander	6-12 12-15	Skye Barber, UNF
5. FMU	5-14 12-18	Denisha Ferguson, KSU
6. UNCP	3-16 8-19	Sabrina Jones, ASU Tishay Lewis, Armstrong
SOUTH		
1. Armstrong *	17-2 27-4	
2. CSU *	17-2 28-4	
3. UNF *	12-7 20-12	SECOND TEAM All-PBC
4. Clayton	10-9 16-11	Jami Cornwell, USCA
5. KSU	9-10 16-13	Jontell Johnson, FMU
6. GCSU	6-13 13-16	Andrea Lee, GC&SU
* NCAA participant		
PLAYER OF THE YEAR		
Tashay Lewis, Armstrong		
COACH OF THE YEAR		
Roger Hodge, Armstrong		

2003-2004

NORTH		
TEAM	PBC YEAR	
1. Lander *	14-2 24-6	
2. ASU *	11-5 24-8	
3. FMU	7-9 14-13	FIRST TEAM All-PBC
4. USCA	6-10 14-14	Skye Barber, UNF
5. USCS	4-12 9-18	Denisha Ferguson, KSU
6. UNCP	2-14 8-20	Tracy Jacobs, Lander Antionette Long, GC&SU Latia Love, GC&SU Tasha Washington, Armstrong
SOUTH		
1. Armstrong *	12-4 23-8	
2. UNF *	12-4 24-6	
3. GCSU *	11-5 28-6	SECOND TEAM All-PBC
4. KSU	10-6 19-10	Natasha Hemphill, Lander
5. CSU	5-11 11-17	Alshaa' Hodges, ASU
6. Clayton	2-14 10-18	Vandy Noldon, Armstrong
* NCAA participant		
PLAYER OF THE YEAR		
Denisha Ferguson, KSU		
FRESHMAN OF THE YEAR		
Kaneetha Gordon, Armstrong		
COACH OF THE YEAR		
Jonathan Norton, Lander		

2004-2005

NORTH		
TEAM	PBC YEAR	
1. UNCP	10-6 18-10	
2. USCA *	9-7 19-3	
3. ASU	8-8 14-14	FIRST TEAM All-PBC
4. FMU	7-9 11-17	Lindsay Bartholf, UNCP
Upstate	7-9 14-14	Shavonder Clarke, KSU
Lander	7-9 14-15	Lucia Heston, CSU Jamika Hindsman, CSU Kasey Mills, USCA Danielle Richardson, UNCP
SOUTH		
1. Clayton *	13-3 25-7	
2. CSU *	12-4 21-10	
3. GCSU	9-7 18-10	SECOND TEAM All-PBC
4. KSU	8-8 18-12	Shelcy Harp, Clayton
5. UNF	6-10 13-16	Kirsti Jones, GCSU
6. Armstrong	7-9 17-13	Jasmine Patterson, Clayton
* NCAA participant		
PLAYER OF THE YEAR		
Danielle Richardson, UNCP		
FRESHMAN OF THE YEAR		
Creshenda Singletary, FMU		
COACH OF THE YEAR		
John Haskins, UNCP		

2005-2006

TEAM	PBC YEAR	
1. NGCSU	19-1 23-4	
2. Clayton*	17-3 25-6	
3. Upstate*	12-8 16-14	
4. Armstrong	10-10 15-13	All-PBC HONORS
UNCP	10-10 15-13	Shelcy Harp, Clayton
6. CSU	9-11 17-15	Audosha Kelley, Armstrong
FMU	9-11 13-16	LaWanna Leon, GCSU
GCSU*	9-11 17-14	Syretha Marble, NGCSU
9. ASU	7-13 13-18	Danielle Moore, FMU
USCA	7-13 11-17	Jasmine Patterson, Clayton
11. Lander	1-19 5-23	Yakeeshia Ross, Upstate
* NCAA participant		
PLAYER OF THE YEAR		
Yakeeshia Ross, USC Upstate		
COACH OF THE YEAR		
Buffie Burson, NGCSU		

2006-2007

NORTH		
TEAM	PBC YEAR	
1. USCA	11-5 20-9	
2. UNCP	10-6 13-15	All-PBC HONORS
3. Lander	9-7 15-13	Mindy Allee, USCA
4. NGA	7-9 12-14	Marquita Driskell, GCSU
5. Upstate	6-10 11-17	Tiara Good, Lander
6. FMU	3-15 6-22	Kaneetha Gordon, Armstrong
SOUTH		
1. Clayton *	12-4 29-6	Megan Huffman, NGA
2. CSU *	10-6 21-11	Syretha Marble, NGA
3. GCSU *	10-6 22-10	Deo Ngulela, ASU
4. ASU	9-7 18-10	Stephanie Ponds, Lander
5. Armstrong	8-8 15-14	Shantel Ragin, Clayton
6. GSW	1-15 4-21	Natasha Stotler, UNCP
* NCAA participant		
PLAYER OF THE YEAR		
Yakeeshia Ross, USC Upstate		
FRESHMAN OF THE YEAR		
Syretha Marble, NGCSU		
COACH OF THE YEAR		
Buffie Burson, NGCSU		



KANEETHA GORDON WAS ARMSTRONG'S FOURTH TWO-TIME All-PBC HONOREE



PEACH BELT CONFERENCE YEAR-BY-YEAR



2007-08

TEAM	PBC	YEAR
1. ASU *	13-7	20-10
Clayton *	13-7	20-11
FMU *	13-7	21-9
Lander *	13-7	23-12
USCA	13-7	20-8
6. CSU	12-8	17-12
7. <i>Armstrong</i>	11-9	20-11
8. NGA	9-11	17-12
9. GCSU	8-12	13-15
10. UNCP	5-15	10-18
11. GSW	0-20	1-26

* NCAA participant

FRESHMAN OF THE YEAR

Dominique Huffin, GCSU

PLAYER OF THE YEAR

Tiara Good, Lander

COACH OF THE YEAR

Heather Macy, FMU

ALL-PBC HONORS

LaShonda Chiles, Lander
Tiara Good, Lander
Kaneetha Gordon, Armstrong
Maria Grimes, CSU
Megan Huffman, NGA
Meredith Legg, USCA
Syretha Marble, NGA
Deo Ngulela, ASU
Shantel Ragin, Clayton
Kourtney Singleton, NGA
Brittany Young, FMU

2008-09

TEAM	PBC	YEAR
1. FMU *	17-3	27-5
2. Clayton *	16-4	26-7
3. <i>Armstrong</i>	12-8	17-11
Lander *	12-8	20-11
USCA	12-8	22-12
6. GCSU	11-8	16-11
7. CSU	10-10	18-14
8. UNCP	8-12	12-16
9. NGA	5-15	9-20
10. ASU	3-17	5-23
GSW	3-17	8-19

* NCAA participant

FRESHMAN OF THE YEAR

Ciara Lyons, Lander

PLAYER OF THE YEAR

Phebe Smith, CSU

COACH OF THE YEAR

Heather Macy, FMU

FIRST TEAM ALL-PBC

Morgan Johnson, USCA
Syretha Marble, NGA
Kevina Ransom, FMU
Shannon Singleton-Bates, FMU
Phebe Smith, CSU
Lacey Willis, Armstrong

SECOND TEAM ALL-PBC

Tiauna Brantley, GCSU
Meredith Legg, USCA
Shannon McKeever, Lander
Shandrea Moore, GCSU
Nikkisha Pritchett, Clayton

THIRD TEAM ALL-PBC

TaSheba Butler, Lander
Jasmine Godwin, ASU
JaToya Kemp, UNCP
Ciara Lyons, Lander
Whitney Randolph, NGA

2009-10

EAST		
TEAM	PBC	YEAR
1. Lander *	17-1	27-4
2. FMU *	16-2	27-5
3. USCA	10-8	15-13
4. UNCP	8-10	14-14
5. <i>Armstrong</i>	6-12	9-17
6. Flagler	3-15	8-19
7. ASU	0-18	1-26

WEST

1. GC	13-4	21-8
2. Clayton *	12-5	24-7
3. CSU	11-6	17-11
4. Mvallo	7-10	14-13
GSW	7-10	12-16
6. NGA	4-13	9-17

* NCAA participant

FRESHMAN OF THE YEAR

Janyce Ealey, NGA

DEF. PLAYER OF THE YEAR

Robin Colbert, FMU

PLAYER OF THE YEAR

Phebe Smith, CSU

COACH OF THE YEAR

Kevin Pederson, Lander

FIRST TEAM ALL-PBC

Shannon McKeever, Lander
Whitney Randolph, NGA
Shannon Singleton-Bates, FMU
Phebe Smith, CSU
Teshymia Tillman, Clayton

SECOND TEAM ALL-PBC

Catherine Cain, USCA
Ebony Fields, FMU
Brittini Johnson, Lander
Chimere Jordan, GC
JaToya Kemp, UNCP

THIRD TEAM ALL-PBC

Janyce Ealey, NGA
Alicia Lewis, Montevallo
Ciara Lyons, Lander
Antoinette Reames, GC
Tanisha Woodard, CSU

2010-11

EAST

TEAM	PBC	YEAR
1. Lander *	16-2	29-4
USCA *	16-2	27-6
3. FMU	11-7	18-10
4. UNCP	8-10	12-15
5. <i>Armstrong</i>	4-14	8-18
6. Flagler	3-15	6-20
7. ASU	2-16	8-18

WEST

1. Clayton *	17-0	35-1
2. GC	11-6	22-7
3. CSU	8-9	15-12
4. NGA	6-11	15-13
GSW	6-11	12-14
Mvallo	6-11	10-17

* NCAA participant

FRESHMAN OF THE YEAR

Kayla Harris, USCA

DEF. PLAYER OF THE YEAR

Tanisha Woodard, Clayton

PLAYER OF THE YEAR

Shannon McKeever, Lander

COACH OF THE YEAR

Dennis Cox, Clayton

FIRST TEAM ALL-PBC

Chimere Jordan, GC
Shannon McKeever, Lander
Shannon Singleton-Bates, FMU
Teshymia Tillman, Clayton
Tanisha Woodard, Clayton

SECOND TEAM ALL-PBC

Hannah DeGraffireed, USCA
Dominique Gilbert, CSU
Dominique Huffin, GC
JaToya Kemp, UNCP
Lindsey Moss, NGA

THIRD TEAM ALL-PBC

Robin Colbert, FMU
Janyce Ealey, NGA
Kayla Harris, USCA
Jasmine Judge, Lander
Courtney Mealing, FMU

YEAR-BY-YEAR PEACH BELT CONFERENCE CHAMPIONS

REGULAR SEASON

1990-91	USC Aiken
1991-92	Augusta State
	Georgia College
1992-93	USC Spartanburg
1993-94	USC Spartanburg
1994-95	USC Spartanburg
	Augusta State
	Columbus State
1995-96	Georgia College
1996-97	Kennesaw State
1997-98	Columbus State
1998-99	Francis Marion
1999-2000	Kennesaw State
2000-01	Columbus State
2001-02	USC Aiken
2002-03	Armstrong
	Columbus State
2003-04	Lander
2004-05	Clayton State
2005-06	North Georgia
2006-07	Clayton State
2007-08	Five Teams
2008-09	Francis Marion
2009-10	Lander
2010-11	Clayton State
2011-12	Clayton State
2012-13	Clayton State

TOURNAMENT

1992	Augusta State
1993	Augusta State
1994	USC Spartanburg
1995	USC Spartanburg
1996	Georgia College
1997	Kennesaw State
1998	Francis Marion
1999	Lander
2000	Columbus State
2001	Columbus State
2002	Georgia College
2003	Armstrong
2004	Georgia College
2005	Clayton State
2006	Georgia College
2007	Clayton State
2008	Lander
2009	Lander
2010	Clayton State
2011	Georgia College
2012	USC Aiken
2013	Clayton State

ARMSTRONG WON THE PBC FOR THE FIRST TIME IN 2002-03





INDIVIDUAL AND SCORING RECORDS

INDIVIDUAL RECORDS

MOST POINTS

First Half: 30, Renee Rice vs. Brewton-Parker, 2-19-92
 Second Half: 23, Renee Rice vs. Brewton-Parker, 2-19-92
 Game: 53, Renee Rice vs. Brewton-Parker, 2-19-92
 Season: 653, Terralyn Edwards, 1981-82
 Career: 1,401, Kaneetha Gordon, 2003-08

BEST SCORING AVERAGE

Season: 24.4, Terralyn Edwards, 1979-80
 Career: 24.0, Renee Rice, 1991-92

MOST FIELD GOALS MADE

Game: 24, Renee Rice vs. Brewton-Parker, 2-19-92
 Season: 276, Renee Rice, 1991-92
 Career: 566, Gigi Gibson, 1980-84

MOST CONSECUTIVE FIELD GOALS

Game: 13, Renee Rice at USC Spartanburg, 2-1-92
 Season: 17, Renee Rice vs. GC&SU, 1-29-92 (4)
 and at USC Spartanburg, 2-1-92 (13)

MOST FIELD GOALS ATTEMPTED

Game: 34, Renee Rice vs. Brewton-Parker, 2-19-92
 Season: 667, Terralyn Edwards, 1981-82
 Career: 1,376, Gigi Gibson, 1980-84

BEST FIELD GOAL PERCENTAGE

Game (min. 8 attempts):
 1.000 (8-8), Kim Pitts vs. ASU, 1-20-86
 Kim Pitts vs. GC&SU, 2-21-86
 (min. 10 attempts):
 .933 (14-15), Demetria McCloudon vs. Fla. Tech, 12-3-98
 Season: .643 (137-213), Christa Vaughan, 1995-96
 Career: .601 (302-502), Christa Vaughan, 1995-98



THE PBC FRESHMAN OF THE YEAR IN 1991-92, YOLANDA OLIVER MADE A SCHOOL RECORD 99 CAREER STARTS.



MOST 3-POINTERS MADE

Game: 9, Debra Morrell vs. Lander, 1-28-95
 Season: 90, Lindsey Holmes, 2007-08
 Career: 183, Michelle Hubbard, 1995-98, 00-01

MOST 3-POINTERS ATTEMPTED

Game: 18, Debra Morrell vs. Lander, 1-28-95
 Season: 256, Lindsey Holmes, 2007-08
 Career: 543, Michelle Hubbard, 1995-98, 00-01

BEST 3-POINT PERCENTAGE

Game (min. 6 att.):
 .857 (6-7), Sheri Hanners vs. USC Aiken, 2-13-99
 Season: .436 (41-94), Jamie Townsend, 1996-97
 Career: .384 (56-146), Duanda Ball, 1999-2000

MOST FREE THROWS

Game: 17, Terralyn Edwards vs. Savannah State, 2-18-80
 Season: 199, Terralyn Edwards, 1981-82
 Career: 361, Terralyn Edwards, 1978-82

MOST FREE THROWS ATTEMPTED

Game: 20, Terralyn Edwards vs. Savannah State, 2-18-80
 Season: 263, Terralyn Edwards, 1981-82
 Career: 484, Terralyn Edwards, 1979-83

BEST FREE THROW PERCENTAGE

Game (min. 10 attempts):
 1.000 (12-12), Debra Danielson vs. Edward Waters, 11-21-83
 (11-11), Tasha Washington vs. Fayetteville St., 11-22-03
 Season: .825 (94-114), Dartayvia Thomas, 2008-09
 Career: .768 (228-297), Lexie Martin, 1998-02

MOST REBOUNDS

Offensive: 14, Renee Rice at Lander, 1-11-92
 Defensive: 18, Zandrique Cason vs. Lenoir-Rhyne, 12-15-00
 Game: 27, Cindy Pound at Tift, 1-12-79
 Season: 373, Gigi Gibson, 1981-82
 Career: 1,158, Kaneetha Gordon, 2003-08

BEST REBOUND AVERAGE

Season: 17.0, Cindy Pound, 1978-79
 Career: 14.1, Cindy Pound, 1978-80

MOST ASSISTS

Game: 15, Yolanda Oliver vs. Kennesaw State, 12-13-94
 Season: 174, Yolanda Oliver, 1994-95
 Career: 448, Yolanda Oliver, 1991-95

MOST STEALS

Game: 10, Norma Faison at Tift, 11-17-84
 Season: 106, Tasha Washington, 2003-04
 Career: 302, Yolanda Oliver, 1991-95

MOST BLOCKED SHOTS

Game: 8, Kelly Versluis at Columbus State, 1-22-09
 Season: 59, Michelle Phillips, 1987-88
 Kelly Versluis, 2008-09
 Career: 101, Kelly Versluis, 2007-09

MOST GAMES

Season: 32, Beth Benefield, Gigi Gibson, Lee Harmer, 1981-82
 Career: 119, Alicia Durham, 2002-06

MOST MINUTES PLAYED

Game: 49, Toni Bell-Yon at Francis Marion, 1-26-91 (2ot)
 Season: 1,000 (29 games), Debra Morrell, 1994-95
 Career: 3,511 (108 games), Yolanda Oliver, 1991-95

MOST CONSECUTIVE STARTS

Career: 99, Yolanda Oliver, 1991-95

SCORING RECORDS

MOST GAMES W/20 OR MORE POINTS

Season: 22, Terralyn Edwards, 1981-1982
 Career: 38, Terralyn Edwards, 1979-1983

MOST GAMES IN DOUBLE FIGURES

Season: 30 (30 games), Tasha Washington, 2003-04
 Career: 73 (109 games), Gigi Gibson, 1980-1984

CONSECUTIVE GAMES W/DOUBLE FIGURES

31, Tasha Washington, 2002-03 (last game) & 2003-04 (all 30)

30-POINT GAMES

Date	Player	Pts. Against	Score
1/27/78	Carmen Escartin	38 at Piedmont	W 85-75
1/12/79	Cindy Pound	34 Tift	W 79-69
2/20/79	Cindy Pound	38 at Charleston So.	W 76-63
11/19/79	Cindy Pound	38 at Savannah St.	W 80-71
11/26/79	Cindy Pound	41 at Central Fla.	W 88-77
1/5/80	Terralyn Edwards	31 Ga. Southwestern	W 71-59
1/14/80	Terralyn Edwards	32 at GC&SU	L 68-59
2/8/80	Terralyn Edwards	31 Fort Valley State	L 84-77
2/9/80	Terralyn Edwards	37 at Charleston So.	W 82-55
2/18/80	Terralyn Edwards	39 Savannah State	W 98-75
12/19/80	Debra David	35 at North Georgia	W 81-74
1/8/82	Terralyn Edwards	36 Shorter	W 70-62
1/23/82	Gigi Gibson	30 at Shorter	W 74-70
3/11/82	Terralyn Edwards	31 Fla. International	L 81-77
2/2/85	Cynthia Hargrove	38 Tift	W 105-66
11/23/85	Norma Faison	33 Rollins	W 72-51
11/26/85	Norma Faison	32 Flagler	W 105-68
12/8/85	Norma Faison	30 North Georgia	W 83-78
12/8/87	Heather Poppell	38 at West Georgia	L 95-69
1/18/88	Heather Poppell	31 Flagler	W 74-68
2/13/88	Heather Poppell	35 at Columbia	W 79-67
2/16/88	Heather Poppell	30 Fort Valley State	L 109-68
2/22/88	Heather Poppell	36 Savannah State	L 78-66
12/9/88	Melissa Pettway	31 at West Georgia	L 96-68
1/8/92	Renee Rice	31 Francis Marion	L 66-64
2/1/92	Renee Rice	42 at USC Upstate	W 69-56
2/5/92	Renee Rice	37 Columbus State	W 60-52
2/17/92	Renee Rice	31 Spelman	W 79-49
2/19/92	Renee Rice	53 Brewton-Parker	W 89-84
12/11/93	Jennifer Teeple	34 Florida Tech	W 69-60
1/31/94	Jennifer Teeple	30 at Augusta State	W 66-59
12/13/94	Nicole Smith	34 Kennesaw State	L 87-86
1/31/98	Demetria McCloudon	31 at Augusta State	L 83-79
12/3/98	Demetria McCloudon	43 Florida Tech	W 78-72
1/2/99	Demetria McCloudon	30 at GC&SU	L 85-73
2/19/99	Demetria McCloudon	33 UNC Pembroke	W 69-60
11/29/00	Zandrique Cason	31 at Spelman	W 79-61
1/4/03	Tishay Lewis	30 at Lander	W 82-72
1/15/03	Tishay Lewis	34 at USC Aiken	W 80-69
2/5/03	Tishay Lewis	30 Augusta State	W 86-53
2/12/03	Tishay Lewis	32 at North Florida	W 69-58
2/11/04	Tasha Washington	34 at North Florida	L 62-61
2/21/04	Tasha Washington	32 at USC Spartanburg	W 78-76
12/4/05	Audoshia Kelley	37 at Presbyterian	W 75-68
3/1/08	Lacey Willis	35 at Lander	L 97-87
11/29/08	Lacey Willis	32 Limestone	W 66-47
12/6/10	Arpine Amirkhanyan	30 Augusta State	W 77-73

20-REBOUND GAMES

Date	Player	Reb. Against	Score
1/31/78	Carmen Escartin	20 at Augusta State	L 87-67
2/17/78	Patty Rountree	23 Georgia Baptist	W 74-59
11/18/78	Cindy Pound	20 Spartanburg Meth.	W 79-64
12/4/78	Cindy Pound	24 at GC&SU	W 77-44
1/12/79	Cindy Pound	27 Tift	W 79-69
1/27/79	Cindy Pound	23 at Georgia Tech	W 61-51
2/11/79	Cindy Pound	23 Ga. Southwestern	W 70-54
2/14/79	Cindy Pound	23 at Augusta State	L 79-76
2/20/79	Cindy Pound	23 at Baptist	W 76-63
11/26/79	Cindy Pound	25 at Central Fla.	W 98-77
11/17/80	Debra David	20 Savannah State	L 74-54
1/13/84	Debra Danielson	20 Shorter	L 86-71
1/28/84	Debra Danielson	22 North Georgia	W 76-69
2/4/84	Debra Danielson	20 at Tift	W 82-76
	Gigi Gibson	20 at Tift	W 82-76
1/29/92	Renee Rice	23 at GC&SU	L 66-59
12/15/00	Zandrique Cason	20 Lenoir-Rhyne	L 69-56
11/21/01	Zandrique Cason	24 at Fort Valley St.	L 53-47
2/13/02	Zandrique Cason	23 at North Florida	L 67-59
2/28/07	Kaneetha Gordon	23 vs. USC Upstate	W 76-63
11/19/11	Mauri Wells	24 Edward Waters	W 80-62
2/8/12	Mauri Wells	20 at Flagler	W 64-52
2/16/13	Mauri Wells	21 Flagler	W 63-56

WELLS HAS THREE CAREER 20+ REBOUNDING GAMES

SEASON TOP 10s



DOUBLE-DOUBLE SEASONS

Carmen Escartin, 77-78	17.2 ppg	10.6 rpg
Cindy Pound, 78-79	19.7 ppg	17.0 rpg
Terralyn Edwards, 79-80	24.4 ppg	11.8 rpg
Cindy Pound, 79-80	20.6 ppg	11.7 rpg
Gigi Gibson, 81-82	13.8 ppg	11.6 rpg
Gigi Gibson, 82-83	17.4 ppg	10.4 rpg
Debra Danielson, 83-84	15.6 ppg	11.4 rpg
Dee Burns, 85-86	15.3 ppg	10.5 rpg
Renee Rice, 91-92	24.0 ppg	13.1 rpg
Zandrique Cason, 00-01	16.7 ppg	10.3 rpg
Zandrique Cason, 01-02	15.4 ppg	10.6 rpg
Kaneetha Gordon, 06-07	15.6 ppg	11.6 rpg
Kaneetha Gordon, 07-08	14.2 ppg	10.2 rpg
Mauri Wells, 11-12	12.2 ppg,	13.0 rpg

POINTS

1. Terralyn Edwards, 81-82	653
2. Renee Rice, 91-92	648
3. Tasha Washington, 03-04	641
4. Terralyn Edwards, 79-80	585
5. Tishay Lewis, 02-03	557
6. Heather Poppell, 87-88	511
7. Demetria McClouden, 98-99	492
8. Audosha Kelley, 04-05	473
9. Gigi Gibson, 82-83	470
10. Norma Faison, 84-85	463

POINTS PER GAME

1. Terralyn Edwards, 79-80	24.4
2. Renee Rice, 91-92	24.0
3. Heather Poppell, 87-88	22.2
4. Terralyn Edwards, 81-82	21.8
5. Tasha Washington, 03-04	21.4
6. Cindy Pound, 79-80	20.6
7. Cindy Pound, 78-79	19.7
8. Norma Faison, 85-86	19.2
9. Audosha Kelley, 04-05	18.2
10. Tishay Lewis, 02-03	18.0

REBOUNDS

1. Gigi Gibson, 81-82	373
2. Renee Rice, 91-92	354
3. Cindy Pound, 78-79	340
4. Mauri Wells, 11-12	338
5. Kaneetha Gordon, 06-07	335
6. Kaneetha Gordon, 07-08	316
7. Zandrique Cason, 01-02	308
8. Debra Danielson, 83-84	307
9. Terralyn Edwards, 79-80	283
10. Gigi Gibson, 82-83	282

REBOUNDS PER GAME

1. Cindy Pound, 78-79	17.0
2. Patty Rountree, 77-78	13.8
3. Renee Rice, 91-92	13.1
4. Mauri Wells, 11-12	13.0
5. Terralyn Edwards, 79-80	11.8
6. Cindy Pound, 79-80	11.7
7. Gigi Gibson, 81-82	11.6
Kaneetha Gordon, 06-07	11.6
9. Debra Danielson, 83-84	11.4
10. Carmen Escartin, 77-78	10.6
Zandrique Cason, 01-02	10.6

FIELD GOALS MADE

1. Renee Rice, 91-92	276
2. Terralyn Edwards, 81-82	227
3. Terralyn Edwards, 79-80	215
4. Tasha Washington, 03-04	205
5. Demetria McClouden, 98-99	201
6. Cindy Pound, 79-80	196
7. Gigi Gibson, 82-83	193
8. Norma Faison, 84-85	189
9. Tishay Lewis, 02-03	183
Lacey Willis, 08-09	183

FIELD GOAL % (MIN. 150 ATT.)

1. Christa Vaughan, 95-96	...	643 (137-213)
2. Demetria McClouden, 98-99604 (201-333)
3. Dee Burns, 85-86601 (152-253)
4. Christa Vaughan, 96-97588 (137-233)
5. Renee Rice, 91-92584 (276-473)
6. Sonia Oliver, 97-98577 (138-239)
7. Angela Foote, 93-94571 (88-154)
8. Sonia Oliver, 96-97550 (93-169)
9. Debra Danielson, 83-84	..	.543 (164-302)
10. Sonya Mintz, 99-00532 (84-158)

3-POINT FIELD GOALS MADE

1. Lindsey Holmes, 07-08	90
2. Tana Griffiths, 06-07	87
3. Debra Morrell, 94-95	82
4. Jennifer Teeple, 93-94	62
5. Lindsey Holmes, 08-09	61
6. Jennifer Teeple, 92-93	59
Lauren Hall, 09-10	59
8. Michelle Hubbard, 95-96	58
9. Duanda Ball, 99-00	56
10. Vandy Noldon, 03-04	54
Tori Klewicki-McNutt, 12-13	54

3-POINT % (MIN. 1 3PM/GM)

1. Jamie Townsend, 96-97	436 (41-94)
2. Ashley Slade, 10-11	402 (33-82)
3. Vandy Noldon, 02-03392 (29-74)
4. Tishay Lewis, 02-03389 (42-108)
Audosha Kelley, 04-05389 (37-95)
6. Tasha Washington, 02-03386 (49-127)
7. Duanda Ball, 99-00384 (56-146)
8. Toni Bell-Yon, 89-90383 (49-128)
9. Jennifer Teeple, 92-93381 (59-155)
10. Lexie Martin, 98-99371 (52-140)
Sarah Brown, 06-07371 (36-97)

FREE THROWS MADE

1. Terralyn Edwards, 81-82	199
2. Tasha Washington, 03-04	190
3. Terralyn Edwards, 79-80	155
Heather Poppell, 87-88	155
5. Tishay Lewis, 02-03	149
6. Zandrique Cason, 00-01	139
7. Zandrique Cason, 01-02	132
Audosha Kelley, 04-05	132
9. Kaneetha Gordon, 07-08	120
10. Cindy Pound, 79-80	103

FREE THROW % (MIN. 2 FTM/GM)

1. Dartayvia Thomas, 08-09825 (94-114)
2. Norma Faison, 84-85810 (85-105)
3. Arpine Amirkhanyan, 10-11	..	.808 (80-99)
4. Lexie Martin, 00-01789 (71-90)
5. Tishay Lewis, 02-03788 (149-189)
6. Mauri Wells, 11-12782 (79-101)
7. Arpine Amirkhanyan, 09-10	..	.771 (84-109)
8. Lexie Martin, 01-02767 (66-86)
9. Tasha Washington, 03-04	..	.763 (190-249)
Audosha Kelley, 04-05763 (132-173)

ASSISTS

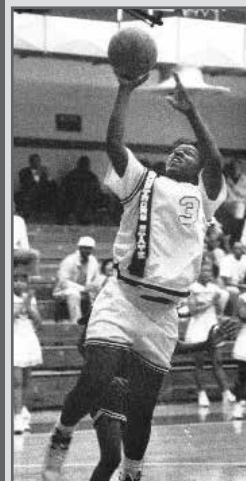
1. Yolanda Oliver, 94-95	174
2. Catherine Shields, 95-96	130
3. Jasmine Herron, 07-08	128
4. Michelle Hubbard, 95-96	120
5. Michelle Hubbard, 97-98	118
6. Michelle Hubbard, 96-97	117
7. Renee Johnson, 83-84	115
8. Jasmine Herron, 06-07	108
9. Cheryl Pierce, 90-91	105
Andrea Popwell, 91-92	105
Tasha Washington, 03-04	105

STEALS

1. Tasha Washington, 03-04	106
2. Marva Lindsay, 92-93	97
3. Yolanda Oliver, 94-95	93
4. Tishay Lewis, 02-03	91
5. Yolanda Oliver, 92-93	89
6. Norma Faison, 83-84	87
7. Renee Rice, 91-92	80
8. Tasha Washington, 02-03	79
Alicia Durham, 05-06	79
10. Marva Lindsay, 93-94	78

BLOCKED SHOTS

1. Michelle Phillips, 87-88	59
Kelly Versluis, 08-09	59
3. Dina Mulholland, 90-91	45
4. Kelly Versluis, 07-08	42
5. Aurora Campbell, 81-82	33
6. Zandrique Cason, 01-02	31
Kaneetha Gordon, 06-07	31
8. Terralyn Edwards, 81-82	30
9. Tishay Lewis, 02-03	29
10. Lavonne Thomas, 04-05	28



RENEE RICE, THE 1991-92 PBC PLAYER OF THE YEAR, AVERAGED 24.0 POINTS PER GAME THAT SEASON, THE SECOND-BEST SINGLE-SEASON SCORING AVERAGE IN PEACH BELL CONFERENCE WOMEN'S BASKETBALL HISTORY. SHE ALSO OWNS THE PBC RECORD FOR POINTS IN ONE GAME WITH 53.

KLEWICKI-McNUTT'S 54 THREES IN 2012-13 TIED FOR 10TH MOST IN A SINGLE SEASON





CAREER TOP 10s

GAMES PLAYED

1. Alicia Durham, 02-06	119
Kaneetha Gordon, 03-08	119
3. Jasmine Herron, 04-08	118
4. Lacey Willis, 05-09	114
Dartayvia Thomas, 06-10	114
6. Marloes Renskers, 00-04	113
7. Gigi Gibson, 80-84	109
8. Yolanda Oliver, 91-95	108
Kristi Steele, 92-96	108
10. Michelle Hubbard, 95-98, 00-01	106

POINTS

1. Kaneetha Gordon, 03-08	1401
2. Gigi Gibson, 80-84	1360
3. Terralyn Edwards, 79-83	1275
Yolanda Oliver, 91-95	1275
5. Lacey Willis, 05-09	1240
6. Zandrique Cason, 00-03	1212
7. Lexie Martin, 98-02	1119
8. Michelle Hubbard, 95-98, 00-01	1114
9. Norma Faison, 83-86	1091
10. Tasha Washington, 02-04	1064

POINTS PER GAME

1. Renee Rice, 91-92	24.0
2. Heather Poppell, 87-88	22.2
3. Terralyn Edwards, 79-83	22.0
4. Cindy Pound, 78-80	20.2
5. Tishay Lewis, 02-03	18.0
6. Audosha Kelley, 04-06	17.7
7. Tasha Washington, 02-04	17.4
8. Carmen Escartin, 77-78	17.2
9. Debra David, 78-80	16.3
10. Kim Pitts, 85-86	16.0

REBOUNDS

1. Kaneetha Gordon, 03-08	1158
2. Gigi Gibson, 80-84	963
3. Mauri Wells, 10-	775
4. Zandrique Cason, 00-03	774
5. Cindy Pound, 78-80	621
6. Sonia Oliver, 94-98	618
7. Lacey Willis, 05-09	597
8. Terralyn Edwards, 79-83	555
9. Kristi Steele, 92-96	547
10. Dartayvia Thomas, 06-10	508

REBOUNDS PER GAME

1. Cindy Pound, 78-80	14.1
2. Renee Rice, 91-92	13.1
3. Patty Rountree, 76-78	12.3
4. Mauri Wells, 10-	10.9
5. Carmen Escartin, 77-78	10.6
6. Kaneetha Gordon, 03-08	9.7
7. Terralyn Edwards, 79-83	9.6
8. Sharleen Hamilton, 80-83	9.2
Debra Danielson, 83-85	9.2
10. Zandrique Cason, 00-03	9.0

FIELD GOALS MADE

1. Gigi Gibson, 80-84	566
2. Kaneetha Gordon, 03-08	525
3. Yolanda Oliver, 91-95	520
4. Lacey Willis, 05-09	485
5. Terralyn Edwards, 79-83	457
6. Norma Faison, 83-86	443
7. Zandrique Cason, 00-03	416
8. Michelle Hubbard, 95-98, 00-01	374
9. Lexie Martin, 98-02	356
10. Lee Harmer, 78-82	355

FIELD GOAL % (MIN. 250 ATT.)

1. Christa Vaughan, 95-98601 (302-502)
2. Renee Rice, 91-92584 (276-473)
3. Dee Burns, 84-86570 (233-409)
4. Demetria McClouden, 97-99566 (341-602)
5. Sonia Oliver, 95-99559 (313-559)
6. Debra Danielson, 83-85528 (333-631)
7. Shaletra Hodge, 01-03487 (130-267)
8. Lacey Willis, 05-09484 (485-1003)
9. Marva Lindsay, 92-94475 (215-453)
10. Cindy Pound, 76-80468 (347-750)

3-POINT FIELD GOALS MADE

1. Michelle Hubbard, 95-98, 00-01	183
2. Lexie Martin, 98-02	179
3. Lindsey Holmes, 04-05, 07-09	159
4. Tana Griffiths, 05-07	122
5. Debra Morrell, 90-95	123
6. Jennifer Teeple, 92-94	121
7. Portia Jones, 07-10	98
8. Toni Bell-Yon, 89-91	94
Alicia Durham, 02-06	94
10. Tasha Washington, 02-04	90

3-POINT % (MIN. 40 MADE)

1. Tishay Lewis, 02-03389 (42-108)
2. Duanda Ball, 99-00384 (56-146)
3. Vandy Noldon, 02-04367 (83-226)
4. Lexie Martin, 98-02351 (179-510)
5. Jamie Townsend, 94-98348 (87-250)
6. Tasha Washington, 02-04345 (90-261)
7. Jennifer Teeple, 92-94339 (121-357)
8. Michelle Hubbard, 95-01337 (183-543)
Tana Griffiths, 05-07337 (122-362)
10. Lindsey Holmes, 04-09335 (159-474)

FREE THROWS MADE

1. Zandrique Cason, 00-03	370
2. Terralyn Edwards, 79-83	361
3. Kaneetha Gordon, 03-08	300
4. Tasha Washington, 02-04	290
5. Gigi Gibson, 80-84	258
6. Lacey Willis, 05-09	257
7. Alicia Durham, 02-06	236
8. Lexie Martin, 98-02	228
9. Yolanda Oliver, 91-95	226
10. Lee Harmer, 78-82	217

FREE THROW % (MIN. 100 ATT.)

1. Arpine Amirkhanyan, 09-11789 (164-208)
2. Tishay Lewis, 02-03788 (149-189)
3. Dartayvia Thomas, 06-09774 (202-261)
4. Lexie Martin, 98-02768 (228-297)
5. Mauri Wells, 10-768 (154-202)
6. Audosha Kelley, 04-06753 (192-255)
7. Tasha Washington, 02-04749 (190-387)
8. Terralyn Edwards, 79-83746 (361-484)
9. Michelle Hubbard, 95-01732 (183-250)
10. Kristin Brewer, 99-02731 (95-130)

ASSISTS

1. Yolanda Oliver, 91-95	448
2. Michelle Hubbard, 95-98, 00-01	413
3. Jasmine Herron, 04-08	364
4. Lexie Martin, 98-02	291
5. Alicia Durham, 02-06	285
6. Marloes Renskers, 00-04	280
7. Jazmin Walker, 09-12	235
8. Lee Harmer, 78-82	226
9. Katy Ballance, 83-88	174
10. Tasha Washington, 02-04	173

STEALS

1. Yolanda Oliver, 91-95	302
2. Alicia Durham, 02-06	268
3. Lexie Martin, 98-02	213
4. Norma Faison, 83-86	197
5. Jasmine Herron, 04-08	196
6. Tasha Washington, 02-04	185
7. Michelle Hubbard, 95-98, 00-01	179
8. Marva Lindsay, 92-94	175
9. Lee Harmer, 78-82	162
10. Gigi Gibson, 80-84	153

BLOCKED SHOTS

1. Kelly Versluis, 07-09	101
2. Zandrique Cason, 00-03	84
3. Kaneetha Gordon, 03-08	69
4. Dina Mulholland, 89-91	62
5. Michelle Phillips, 85-88	61
6. Mauri Wells, 10-	48
7. Lacey Willis, 05-09	38
8. Rachel Baker, 00-02	37
Karolina Rykowska, 2011-13	37
10. Melissa Germany, 98-02	36



LEXIE
MARTIN



ALICIA
DURHAM



WELLS NEEDS 244 REBOUNDS TO BECOME THE SECOND PLAYER WITH 1,000 CAREER BOARDS

TEAM RECORDS



SCORING

MOST POINTS

First Half: 58, vs. USC Aiken, 2-13-99
Second Half: 58, vs Columbia, 1-23-88
Overtime: 19, vs Augusta, 1-12-85
Game: 105, vs Tift, 2-2-85 and vs Flagler, 11-26-85
Season: 2,328 (31 games), 2002-2003

FEWEST POINTS

First Half: 7, at Valdosta State (52), 2-11-89
Second Half: 4, vs West Georgia (40), 1-27-88
Overtime: 2, at Savannah State, 12-5-87
Game: 24, vs West Georgia, 1-27-88
Season: 757 (15 games), 1976-1977

MOST POINTS ALLOWED

First Half: 63, at Georgia College, 2-20-88
Second Half: 67, vs Fort Valley State, 2-16-88
Overtime: 16 (1ot), at Georgia College, 2-27-93
19 (2ot) at Francis Marion, 1-26-91
Game: 114, at Georgia College, 2-20-88
Season: 2,176, 1981-1982

FEWEST POINTS ALLOWED

First Half: 9, vs. Allen, 11-15-10
Second Half: 15, at Voorhees, 12-12-92
Overtime: 4, vs. Augusta, 1-12-85 and at Brewton-Parker, 1-6-92
Game: 26, at Rollins, 11-14-80
Season: 1,046, 1976-1977

POINTS

Most Points Game, Both Teams:
201, Armstrong (102), at Tift (99) ot, 2-17-79
Fewest Points Game, Both Teams:
85, Armstrong (48) at Coker (37), 12-8-93
Largest margin of victory:
57, Armstrong (83) at Rollins (26), 11-14-80
Largest margin of defeat:
64, Armstrong (28) at Valdosta State (92), 2-11-89
Most Points in a win:
105, vs Tift, 2-2-85 and vs Flagler, 11-26-85
Most Points in a road win: 102 at Tift (99) ot, 2-17-79
Fewest Points in a win:
46, Armstrong (46) at Savannah State (45), 12-10-01
Fewest Points in a home win:
47, Armstrong (47) vs. Columbus State (43), 1-28-06
Most Points in a loss:
87, Armstrong (87) at Lander (97), 3-1-08
Most Points in a home loss:
86, Armstrong (86) vs Kennesaw State (87), 12-13-94
Most Points in a road loss:
87, Armstrong (87) at Lander (97), 3-1-08
Fewest Points in a loss:
24, Armstrong (24) vs West Georgia (79), 1-27-88
Fewest Points in a road loss:
28, Armstrong (28) at Valdosta State (92), 2-11-89

WINS AND LOSSES

Most Wins: 27, 2002-2003
Best Winning Percentage: .870 (27-4), 2002-2003
Most Consecutive Wins: 14, 1-25-03 - 3-9-03
Most Consecutive Season Opening Wins: 5, 1978 to 1982
Most Consecutive Wins to start a season: 8, 1984-1985
Most Consecutive Home Wins: 15, 2-9-02 to 2-26-03
Most Consecutive Road Wins: 6 (three times)
2-17-79 to 12-8-79; 1-25-80 to 11-15-80; 1-29-03 to 3-1-03
Most Losses: 21, 1988-1989
Worst Winning Percentage: .125 (3-21), 1988-89
Most Consecutive Losses: 22, 1987-88 & 1988-89
Most Consecutive Losses in Season Openers: 2,
1976 to 1977, 1993 to 1994, 2003 to 2004
Most Consecutive Losses to start a season: 17, 1988-1989
Most Consecutive Home Losses: 13, 1-27-88 to 2-4-89
Most Consecutive Road Losses: 12, 1-27-86 to 1-9-88

FIELD GOALS

MOST FIELD GOALS

Game: 45, vs Tift, 2-2-85
Season: 930, (28 games), 1984-1985

MOST FIELD GOALS ATTEMPTED

Game: 108, vs Tift, 2-2-85
Season: 2,304 (32 games), 1981-1982

BEST FIELD GOAL PERCENTAGE

Half: .810 (17-21), 1st Half vs Augusta, 1-20-86
Game: .636 (28-44) at Lynn University, 11-29-97
(28-44) at GC&SU, 1-24-98
Season: .4464 (708-1,586), 1985-1986

FEWEST FIELD GOALS

Game: 6, at Valdosta State, 2-11-89
Season: 275 (15 games), 1976-1977

FEWEST FIELD GOALS ATTEMPTED

Game: 30, at Florida Atlantic, 12-9-89
Season: 937 (15 games), 1976-1977

LOWEST FIELD GOAL PERCENTAGE

First Half: .056 (1-18), at Valdosta State, 2-11-89
Second Half: .087 (2-23), vs West Georgia, 1-27-88
Game: .154 (6-39), at Valdosta State, 2-11-89
Season: .293 (275-937), 1976-1977

3-POINT FIELD GOALS

MOST 3-POINTERS MADE

Game: 13 vs. UNC Pembroke, 2-24-10
Season: 203 (29 games) 2006-2007

MOST 3-POINTERS ATTEMPTED

Game: 37, at GCSU, 2-6-06
Season: 648 (29 games), 2006-2007

BEST 3-POINT PERCENTAGE

Game: .750 (6-8), vs. Mount Olive, 11-17-00
Season: .369 (69-187), 1989-1990

FREE THROWS

MOST FREE THROWS MADE

Game: 44, vs South Florida, 1-30-82
Season: 531 (31 games), 2002-2003

MOST FREE THROWS ATTEMPTED

Game: 57, vs South Florida, 1-30-82
Season: 836 (32 games), 1981-1982

BEST FREE THROW PERCENTAGE

Game: .923 (12-13) vs. Clayton State, 3-6-08
Season: .729, 2008-09

FEWEST FREE THROWS MADE

Game: 1, at Berry, 2-18-84
Season: 201 (27 games), 1995-96

FEWEST FREE THROWS ATTEMPTED

Game: 3, at Berry, 2-18-84 and vs Ala.-Huntsville, 12-6-96
Season: 343 (27 games), 1995-96

LOWEST FREE THROW PERCENTAGE

Game: .222 (4-18), at Rollins, 12-10-94
Season: .516 (330-640), 1982-1983

REBOUNDS

MOST OFFENSIVE REBOUNDS

Game: 45, vs Tift, 2-4-84
Season: 571 (28 games), 1984-1985

MOST DEFENSIVE REBOUNDS

Game: 45, vs Tift, 2-4-84
Season: 876 (28 games), 1984-1985

MOST REBOUNDS

Game: 90, vs Tift, 2-4-84
Season: 1,447 (28 games), 1984-1985

FEWEST OFFENSIVE REBOUNDS

Game: 0, vs Valdosta State, 12-14-87
Season: 196 (15 games), 1976-1977

FEWEST DEFENSIVE REBOUNDS

Game: 11, at Georgia College, 2-20-88
Season: 291 (15 games), 1976-1977

FEWEST TOTAL REBOUNDS

Game: 14, vs Valdosta State, 12-14-87
Season: 487 (15 games), 1976-1977

REBOUND MARGIN

Game: 50, Armstrong (62), Atlanta Christian (12), 2-12-77
Season: 5.2, Armstrong (43.4), Opp (38.2), 2007-08

OTHER RECORDS

MOST PERSONAL FOULS

Game: 32, vs Gardner-Webb, 12-30-00
Season: 620 (31 games), 2002-2003

FEWEST PERSONAL FOULS

Game: 6 vs. Augusta State, 1-31-13
Season: 337 (15 games), 1976-1977

MOST ASSISTS

Game: 30, vs USC Aiken, 1-3-96
Season: 438 (31 games), 2002-2003; (29 games), 2006-07

MOST STEALS

Game: 29, at Tift, 11-17-84
Season: 421 (31 games), 2002-2003

MOST BLOCKED SHOTS

Game: 9, vs Clayton State, 12-7-03
Season: 117 (32 games), 1981-1982

MOST TURNOVERS

Game: 45 vs. Fayetteville State, 11-26-99
Season: 669 (31 games), 2003-04

FEWEST TURNOVERS

Game: 6, at USC Spartanburg, 2-1-92
Season: 354 (24 games), 1985-1986

SEASON AVERAGES

Highest Offensive Average: 80.7, 1984-1985
Lowest Offensive Average: 50.5, 1976-1977
Best Defensive Average: 56.5, 1990-1991
Worst Defensive Average: 84.8, 1987-1988
Victory Margin: 15.8 (Armstrong: 75.1 Opp: 59.3), 2002-2003
Losing Margin: 28.5 (Armstrong: 52.3 Opp: 80.8), 1988-1989
Best Rebound Average: 51.7, 1984-1985
Best Assist Average: 15.5, 1991-1992
Best Steals Average: 15.9, 1980-1981





PEACH BELT CONFERENCE HONORS

FIRST TEAM

Renee Rice (1991-92)
 Nicole Smith (1994-95)
 Zandrique Cason (2000-01)
 Tishay Lewis (2002-03)
 Tasha Washington (2003-04)
 Audosha Kelley (2005-06)
 Kaneetha Gordon (2006-07, 2007-08)
 Lacey Willis (2008-09)

SECOND TEAM

Toni Bell-Yon (1990-91)
 Yolanda Oliver (1992-93, 1993-94)
 Jennifer Teeple (1993-94)
 Christa Vaughan (1995-96)
 Demetria McClouden (1998-99)
 Zandrique Cason (2001-02)
 Tasha Washington (2002-03)
 Vandy Noldon (2003-04)

THIRD TEAM

Mauri Wells (2011-12)

PLAYER OF THE YEAR

Renee Rice (1991-92)
 Tishay Lewis (2002-03)

COACH OF THE YEAR

Roger Hodge (2002-03)

FRESHMAN OF THE YEAR

Yolanda Oliver (1991-92)
 Kaneetha Gordon (2003-04)

PBC PLAYER OF THE WEEK

Renee Rice
 (Dec. 15, 1991, Jan. 6, 13 & 20, 1992, Feb. 3, 17 & 24, 1992)
 Nicole Smith
 (Dec. 5 & 19, 1994)
 Demetria McClouden
 (Jan. 4, 1999)
 Zandrique Cason
 (Dec. 4 & 18, 2000, Jan. 14, 2002)
 Tishay Lewis
 (Jan. 6, 2003, Feb. 3 & 10, 2003)
 Tasha Washington
 (Dec. 8, 2003, Feb. 9, 23 & 29, 2004)
 Audosha Kelley
 (Jan. 10, 2005, Feb. 6 & 13, 2006)
 Alicia Durham
 (Nov. 21, 2005)
 Tana Griffiths
 (Nov. 27, 2006)
 Kaneetha Gordon
 (Dec. 11, 2006, Feb. 26, 2007, Dec. 3, 2007, Mar. 2, 2008)
 Lacey Willis
 (Nov. 24, 2008, Dec. 1 & 8 2008, March 2, 2009)
 Lauren Hall
 (Nov. 30, 2009)
 Arpine Amirkhanyan
 (Dec. 6, 2010)
 Mauri Wells
 (Nov. 21, 2011)

KODAK/WBCA DII

ALL-AMERICA



FIRST TEAM
 Tishay Lewis
 (2002-03)



HONORABLE MENTION
 Audosha Kelley
 (2005-06)



HONORABLE MENTION
 Kaneetha Gordon
 (2006-07)

PBC TOURNEY HONORS

ALL-TOURNAMENT TEAM

Jennifer Teeple (1993-94)
 Mary Ann Merritt (1994-95)
 Yolanda Oliver (1994-95)
 Zandrique Cason (2001-02)
 Tishay Lewis (2002-03)
 Tasha Washington (2002-03, 2003-04)
 Kaneetha Gordon (2006-07, 2007-08)
 Lacey Willis (2007-08)

PBC TOURNAMENT MVP

Tishay Lewis (2002-03)

ALL-REGION HONORS

WBCA ALL-REGION 3

Tishay Lewis (2002-03)
 Roger Hodge (2002-03)
 Region Coach of the Year
 Tasha Washington (2003-04)
 Audosha Kelley (2005-06)
 Kaneetha Gordon (2006-07)

DAKTRONICS ALL-REGION

Tishay Lewis (2002-03)
 Tasha Washington (2003-04)
 Kaneetha Gordon (2006-07, 2007-08)
 Lacey Willis (2008-09)

A.I.A.W. ALL-REGION III

Terralyn Edwards (1981-82)
 Aurora Campbell (1981-82)

NAIA ALL-DISTRICT 25

Gigi Gibson (1982-83)
 Debra Danielson (1983-84, 1984-85)
 Norma Faison (1984-85)

GIAC HONORS

ALL-CONFERENCE

Debra Danielson (1983-84, 1984-85)
 Norma Faison (1984-85)

DII BULLETIN

ALL-AMERICA

Tishay Lewis (2002-03) - Third Team
 Tasha Washington (2003-04) - Fourth Team

DAKTRONICS

ALL-AMERICA

Tishay Lewis (2002-03) - Third Team
 Tasha Washington (2003-04) - Honorable Mention

NCAA TMT HONORS

ALL-TOURNAMENT TEAM

Tasha Washington (2003-04)

GAIAW HONORS

ALL-CONFERENCE

Cindy Pound (1978-79, 1979-80)
 Terralyn Edwards (1979-80, 1981-82)
 Sharleen Hamilton (1980-81)
 Lee Harmer (1981-82)

ALL-TOURNAMENT TEAM

Terralyn Edwards (1981-82)
 Aurora Campbell (1981-82)

PLAYER OF THE YEAR

Cindy Pound (1979-80)
 Terralyn Edwards (1981-82)

COACH OF THE YEAR

B.J. Ford (1978-79, 1981-82)





SEASON-BY-SEASON RECORDS

HOME-AWAY-NEUTRAL

YEAR	RECORD	PCT.	CONFERENCE	COACH
76-77	2-13	.133	GIAIW	B.J. Ford
77-78	4-16	.202	2-6	B.J. Ford
78-79	12-8	.600	7-3	B.J. Ford
79-80	17-7	.708	11-4	B.J. Ford
80-81	10-16	.385	3-9	B.J. Ford
81-82	20-12	.625	5-3	B.J. Ford
82-83	11-16	.407	GIAC	B.J. Ford
83-84	15-11	.577	5-7	B.J. Ford
84-85	21-7	.750		B.J. Ford
85-86	9-15	.375		B.J. Ford
86-87			NO TEAM	
87-88	5-18	.217		Larry Tapp
88-89	3-21	.125		Larry Tapp
89-90	15-9	.625	PBC	Lenny Passink
90-91	10-14	.417	5-7 (T4th)	Lenny Passink
91-92	14-13	.519	5-9 (T5th)	Lenny Passink
92-93	16-10	.615	10-6 (3rd)	Lenny Passink
93-94	17-9	.654	11-5 (3rd)	Lenny Passink
94-95	12-17	.414	8-10 (T5th)	Kim Bynum
95-96	9-18	.333	7-11 (T8th)	Kim Bynum
96-97	14-13	.519	10-9 (T5th)	Lynn Jarrett
97-98	12-16	.429	6-12 (T5th)	Lynn Jarrett
98-99	13-15	.464	6-10 (T4th-S)	Lynn Jarrett
99-00	7-19	.269	4-12 (T5th-S)	Lynn Jarrett
2000-01	10-16	.385	5-11 (5th-S)	Roger Hodge
2001-02	11-18	.379	7-12 (6th-S)	Roger Hodge
2002-03	27-4	.871	17-2 (T1st-S)	Roger Hodge
2003-04	23-8	.742	12-4 (T1st-S)	Roger Hodge
2004-05	17-13	.567	7-9 (T4th-S)	Roger Hodge
2005-06	15-13	.536	10-10 (T4th)	Roger Hodge
2006-07	15-14	.517	8-8 (5th-S)	Roger Hodge
2007-08	20-11	.645	11-9 (7th)	Roger Hodge
2008-09	17-11	.607	12-8 (t3rd)	Matt Schmidt
2009-10	9-17	.346	6-12 (t5th-E)	Matt Schmidt
2010-11	8-18	.308	4-14 (5th-E)	Matt Schmidt
2011-12	13-13	.500	7-11 (t4th-E)	Matt Schmidt
2012-13	13-14	.481	8-11 (4th-E)	Matt Schmidt
	466-483	.491	188-191	

YEAR	HOME	AWAY	NEUTRAL
76-77	1-3	1-7	0-3
77-78	2-6	2-10	0-0
78-79	7-3	5-2	0-3
79-80	9-2	7-2	1-3
80-81	6-6	3-8	1-2
81-82	11-3	9-4	1-0
82-83	6-7	5-8	0-1
83-84	7-4	8-6	0-1
84-85	11-3	9-4	1-0
85-86	6-6	3-9	0-0
86-87		NO TEAM	
87-88	3-8	2-8	0-2
88-89	2-10	1-10	0-1
89-90	10-2	5-7	0-0
90-91	5-6	5-8	0-0
91-92	8-5	6-8	0-0
92-93	9-3	7-5	0-2
93-94	8-3	7-4	2-2
94-95	8-4	3-11	1-2
95-96	5-8	2-10	2-0
96-97	8-5	5-7	1-1
97-98	6-6	3-9	3-1
98-99	9-6	3-8	1-1
99-00	6-6	1-10	0-3
2000-01	7-8	3-7	0-1
2001-02	7-6	2-11	2-1
2002-03	13-0	10-3	4-1
2003-04	12-2	8-4	3-2
2004-05	11-2	5-8	1-3
2005-06	9-5	5-7	1-1
2006-07	11-3	3-9	1-2
2007-08	12-1	4-9	4-1
2008-09	9-6	7-4	1-1
2009-10	6-7	3-9	0-1
2010-11	5-9	3-8	0-1
2011-12	9-8	4-5	0-0
2012-13	10-7	3-6	0-1
	284-178	160-279	32-46
	.615	.365	.410

ARMSTRONG WOMEN'S BASKETBALL ALL-TIME VS. OPPONENTS

Alabama-Huntsville	2-4
Allen	4-0
Anderson (SC)	3-2
Atlanta Christian	1-0
Barry University	2-2
Barton	0-2
Bellarmine	0-1
Belmont Abbey	0-1
Benedict	0-0
Berry College	3-10
Bluefield College	1-0
Brewton-Parker	8-1
Brunswick CC	2-0
Cal Poly Pomona	1-0
Cal State Los Angeles	1-0
Carson-Newman	2-1
Catawba	0-2
Central Florida	2-1
Charleston (W. Va.)	0-1
Charleston Southern	7-4
Claffin	0-3
Clayton State	10-26
Coastal Georgia	0-1
Coker	4-2
Columbia (S.C.)	4-1
Columbus State	20-29
Concord (W. Va.)	1-0
Converse	2-2
Cumberland (Ky.)	0-2
Davis & Elkins	1-0
Eckerd	6-1
Edinboro (Pa.)	0-1
Edward Waters	9-1
Elizabeth City State	0-2
Fairmont State	1-0
Fayetteville State	3-5
Ferris State	0-1

Fort Valley State	1-10
Flagler	21-4
Florida	0-1
Florida Atlantic	0-2
Florida Memorial	3-1
Florida Southern	0-2
Florida Tech	7-9
Francis Marion	17-23
Gardner-Webb	0-1
Georgia Baptist	1-1
Georgia College	24-46
GRU Augusta	29-30
Georgia Southern	0-8
Georgia Southwestern	16-11
Georgia Tech	1-4
Kennesaw State	16-17
Knoxville	0-2
Lander	25-17
Lenoir-Rhyne	2-4
Limestone	1-1
Livingstone	0-1
Lynn	1-1
Mars Hill	4-2
Mesa State	1-0
Miami Dade North	0-1
Michigan-Dearborn	0-1
Montevallo	1-3
Morris College	3-1
Mount Olive	1-1
Newberry	0-2
Nicholls State	0-1
North Alabama	1-1
North Carolina Central	1-1
North Florida	7-13
North Georgia	19-12
Northern Michigan	0-1

Northwood (Mich.)	1-0
Nova Southeastern	2-1
Paine	2-5
Palm Beach Atlantic	1-0
Pfeiffer	3-0
Piedmont	13-4
Presbyterian (S.C.)	3-3
Queens (N.C.)	1-0
Quincy	1-0
Rollins	5-4
Saginaw Valley State	0-1
Savannah State	14-20
Shaw	2-1
Shorter	3-6
South Florida	1-1
Spartanburg Methodist	1-1
Spelman	5-2
Stetson	2-0
Saint Leo	9-3
Tampa	1-3
Tennessee Wesleyan	0-1
Tift	14-4
Trinity Baptist	1-0
Troy State	0-1
Tusculum	2-0
UNC Asheville	1-2
UNC Pembroke	25-13
USC Aiken	22-22
USC Upstate	15-17
Valdosta State	4-9
Voorhees	1-0
West Georgia	1-11
Wingate	1-1
Winthrop	3-4
Young Harris	1-1
Overall	466-483

Bold indicates 2013-14 opponent.





1976-77 (2-13)

Nov. 16	Paine	L 48-59
Dec. 1	at Paine	L 53-80
Jan. 8	Tift	W 62-61
Jan. 14	at Claffin	L 50-103
Jan. 17	at Georgia Southern	L 48-74
Jan. 27	at Georgia Tech	L 54-57
Jan. 28	at Piedmont	L 57-70

Flagler Invitational

Feb. 4	vs. Miami Dade North	L 59-73
Feb. 5	vs. Central Florida	L 48-62
Feb. 5	vs. Florida	L 47-82
Feb. 11	at Spelman	L 44-48 ot
Feb. 12	at Atlanta Christian	W 76-38
Feb. 15	Georgia Southern	L 40-58
Feb. 19	at Tift	L 39-98
Feb. 22	Claffin	L 32-83

1977-78 (4-16, 2-6 GAIAW)

Nov. 12	at Tift *	L 68-83
Nov. 18	Piedmont	L 39-62
Nov. 19	Georgia Baptist	L 52-57
Dec. 2	Georgia College *	W 71-69
Dec. 3	at Georgia Tech *	L 36-90
Dec. 9	at Charleston Baptist	L 42-61
Jan. 7	North Georgia	L 46-82
Jan. 13	Georgia Tech *	L 73-90
Jan. 17	Augusta *	L 64-75
Jan. 20	at Spartanburg Methodist	L 60-77
Jan. 21	at Converse	L 58-63
Jan. 27	at Piedmont	W 85-75
Jan. 28	at North Georgia	L 52-60
Jan. 31	at Augusta *	L 67-87
Feb. 3	Tift *	W 71-55
Feb. 4	at Georgia College *	L 57-71
Feb. 9	at USC Aiken	L 47-75
Feb. 10	Charleston Baptist	L 39-49
Feb. 17	at Georgia Baptist	W 70-59
Feb. 18	at Spelman	L 66-76

* GAIAW Conference

1978-79 (12-8, 7-3 GAIAW)

Nov. 18	Spartanburg Methodist	W 79-64
Dec. 2	at Georgia Southwestern *	W 83-59
Dec. 4	at Georgia College *	W 77-44
Dec. 9	USC Aiken	L 63-66

North Georgia Christmas Invitational

Dec. 11	vs. Berry	L 67-79
Dec. 12	vs. Troy State	L 55-81
Jan. 5	Berry	W 79-73
Jan. 6	Georgia Tech *	L 71-80
Jan. 10	Augusta *	L 57-60
Jan. 12	Tift *	W 79-69
Jan. 13	North Georgia	W 62-59
Jan. 25	Georgia College *	W 78-66
Jan. 27	at Georgia Tech *	W 61-51
Jan. 29	Charleston Baptist	W 71-55
Feb. 2	at USC Aiken	L 79-88
Feb. 11	Georgia Southwestern *	W 70-54
Feb. 14	at Augusta *	L 76-79
Feb. 17	at Tift *	W 102-99 ot
Feb. 20	at Charleston Baptist	W 76-63

GAIAW State Tournament

Feb. 22	vs. North Georgia	L 60-85
---------	-------------------	---------

1979-80 (17-7, 11-4 GAIAW)

Nov. 19	at Savannah State	W 80-71
Nov. 26	at Central Florida	W 98-77
Nov. 28	Georgia College *	L 65-73
Dec. 1	at Georgia Southwestern *	W 84-64
Dec. 8	Winthrop	W 78-70

North Georgia Christmas Invitational

Dec. 13	vs. Georgia Southern	L 78-87
Dec. 14	vs. Tennessee Wesleyan	L 75-90

Jan. 5	Georgia Southwestern *	W 71-59
Jan. 8	Augusta **	W 80-72
Jan. 12	West Georgia **	W 73-62
Jan. 14	at Georgia College *	L 59-68
Jan. 16	at Fort Valley State *	L 71-82
Jan. 22	Central Florida	W 87-74
Jan. 25	at Tift *	W 81-62
Jan. 26	at Berry **	W 76-73
Feb. 1	Tift *	W 78-67
Feb. 2	North Georgia **	W 65-52
Feb. 8	Fort Valley State *	L 77-84
Feb. 9	at Charleston Baptist	W 86-56
Feb. 13	at Augusta **	W 77-76
Feb. 16	Charleston Baptist	W 86-56
Feb. 18	Savannah State *	W 98-75

GAIAW State Tournament (Rome)

Feb. 20	vs. Piedmont	W 78-77
Feb. 21	vs. West Georgia	L 64-67

* GAIAW South Conference

** GAIAW North Conference

1980-81 (10-16, 3-9 GAIAW)

Nov. 14	at Rollins	W 83-26
Nov. 14	vs. Tampa	L 45-50
Nov. 15	at Stetson	W 78-68
Nov. 17	Savannah State	L 54-74
Dec. 5	Berry *	L 72-84
Dec. 11	Fort Valley State *	L 71-75
Dec. 13	at Winthrop	L 51-81

North Georgia Christmas Invitational

Dec. 18	vs. North Alabama	L 60-70
Dec. 19	at North Georgia	W 81-74 ot
Jan. 5	Augusta *	W 66-61
Jan. 9	Shorter *	L 61-66
Jan. 10	Winthrop	W 70-52
Jan. 12	at Savannah State	L 61-77
Jan. 16	Georgia Southwestern *	W 77-74 ot
Jan. 17	Flagler	W 82-67
Jan. 23	Georgia College *	L 78-79
Jan. 30	Tift *	W 79-76
Feb. 6	at Fort Valley State *	L 62-63
Feb. 7	West Georgia *	L 54-71
Feb. 9	Charleston Baptist	W 55-48
Feb. 13	at Tift *	L 67-80
Feb. 14	at Georgia College *	L 60-62
Feb. 16	at Charleston Baptist	L 57-69
Feb. 20	at Georgia Southwestern *	L 58-63

GAIAW State Tournament (Carrollton)

Feb. 25	vs. North Georgia	W 63-56
Feb. 26	vs. Fort Valley State	L 56-82

* GAIAW Conference

1981-82 (20-12, 5-3 GAIAW)

Nov. 17	at Savannah State	W 90-86
---------	-------------------	---------

Georgia Southern Tipoff Tournament

Nov. 20	vs. North Georgia	W 65-63
Nov. 21	at Georgia Southern	L 49-74
Nov. 23	at Georgia Southwestern	L 65-84
Nov. 30	at Winthrop	L 74-88
Dec. 3	at Georgia Southern	L 58-73
Dec. 5	West Georgia *	L 70-89
Dec. 10	at Stetson	W 85-80
Dec. 11	at South Florida	L 58-65
Dec. 16	at Augusta *	W 60-57
Dec. 17	Winthrop	L 59-69
Dec. 19	North Georgia	W 72-59
Jan. 8	Shorter *	W 70-62
Jan. 11	Augusta *	W 77-70
Jan. 13	Brewton-Parker	W 71-52
Jan. 16	Piedmont	W 74-58
Jan. 20	Savannah State	W 65-60
Jan. 22	at Berry	L 54-77
Jan. 23	at Shorter *	W 74-70
Jan. 25	at Brewton-Parker	W 67-56
Jan. 29	Tift *	W 60-45

Jan. 30	South Florida	W 78-74
Feb. 1	Georgia Southwestern	W 79-71
Feb. 5	Georgia College	W 69-60
Feb. 8	at Charleston Baptist	W 65-53
Feb. 12	at Georgia College	W 75-61
Feb. 13	at Tift *	L 68-72
Feb. 19	at West Georgia *	L 69-77
Feb. 22	Charleston Baptist	W 68-61

GAIAW State Tournament (Savannah)

Feb. 26	Augusta	W 64-59
Feb. 27	West Georgia	L 57-70

AIAW Region III Tournament (Orlando)

Mar. 12	vs. Florida International	L 77-81
---------	---------------------------	---------

* GAIAW Conference

1982-83 (11-16)

Nov. 20	at Brunswick JC	W 53-52
Nov. 22	Edward Waters	W 70-63
Nov. 27	at Florida International	L 59-83
Nov. 29	at Flagler	W 80-58
Dec. 1	Piedmont	L 51-70
Dec. 4	Georgia Southwestern	L 52-65
Dec. 6	Savannah State	L 44-63
Dec. 8	at Augusta	W 70-68
Dec. 13	Kennesaw State	W 66-53
Dec. 14	North Georgia	W 62-58
Jan. 7	at North Georgia	L 65-79
Jan. 8	at Kennesaw State	L 50-65
Jan. 11	at Edward Waters	W 66-58
Jan. 14	UNC Asheville	L 58-67
Jan. 17	Augusta	W 78-77
Jan. 24	Brunswick JC	W 62-43
Jan. 28	Tift	W 78-51
Jan. 29	West Georgia	L 56-67
Feb. 1	at Savannah State	L 41-71
Feb. 4	Georgia College	W 68-56
Feb. 5	Knoxville	L 65-85
Feb. 12	at Knoxville	L 78-96
Feb. 18	at Tift	W 87-64
Feb. 19	at Piedmont	L 69-82
Feb. 25	at West Georgia	L 66-89
Feb. 26	at Georgia Southwestern	L 51-71

NAIA District 25 Playoffs

Feb. 28	at Berry	L 59-82
---------	----------	---------

1983-84 (15-11, 5-7 GIAC)

Nov. 16	Georgia Southwestern	L 64-72
Nov. 21	Edward Waters	W 83-72
Nov. 29	Berry *	L 64-79
Dec. 1	Georgia College *	L 79-88
Dec. 9	at Central Florida	L 60-85
Dec. 10	at Flagler	W 77-72 2ot
Dec. 14	at Augusta	L 68-80
Dec. 15	Kennesaw State	W 71-62
Jan. 6	at Piedmont *	W 88-63
Jan. 7	at North Georgia *	W 71-59
Jan. 11	Augusta	W 87-85
Jan. 13	Shorter *	L 71-86
Jan. 14	Tift	W 85-72
Jan. 16	at Edward Waters	W 87-72
Jan. 18	Savannah State	W 83-80
Jan. 21	at Eckerd	W 79-47
Jan. 22	at Saint Leo	W 70-68
Jan. 28	North Georgia *	W 76-69
Jan. 30	at Georgia Southwestern *	L 55-86
Feb. 3	at Georgia College *	W 91-76
Feb. 4	at Tift	W 82-76
Feb. 6	at Savannah State	L 62-79
Feb. 17	at Shorter *	L 63-78
Feb. 18	at Berry *	L 51-81
Feb. 25	Piedmont *	W 76-59

NAIA District 25 Playoffs

Feb. 28	at Paine	L 66-72
---------	----------	---------

* GIAC Conference



ALL-TIME RESULTS



1984-85 (21-7)

Nov. 16	at Georgia College	W 85-76
Nov. 17	at Tift	W 78-59
Nov. 27	Berry	W 66-65
Dec. 7	at Rollins	W 86-61
Dec. 8	at Flagler	W 96-46
Dec. 10	North Georgia	W 92-52
Dec. 12	Kennesaw State	W 93-55
Jan. 4	at Kennesaw State	W 80-68
Jan. 5	at Georgia Southwestern	L 62-75
Jan. 7	Carson Newman	L 63-73
Jan. 11	Winthrop	W 78-67
Jan. 12	Paine	W 82-65
Jan. 15	Augusta	W 92-77 ot
Jan. 18	at North Georgia	W 74-59
Jan. 19	at Piedmont	W 90-72
Jan. 22	Edward Waters	W 86-75
Jan. 25	Piedmont	W 98-70
Jan. 26	Flagler	W 83-47
Feb. 1	Shorter	L 68-87
Feb. 2	Tift	W 105-66
Feb. 6	Georgia Southwestern	L 66-69
Feb. 8	at Paine	W 79-70
Feb. 13	Georgia College	W 95-86
Feb. 15	at Shorter	W 69-68
Feb. 16	at Berry	L 67-98
Feb. 22	at Augusta	L 86-96
NAIA District 25 Playoffs		
Feb. 25	Georgia College	W 79-77
Feb. 27	at Berry	L 61-72

1985-86 (9-15)

Nov. 23	Rollins	W 72-51
Nov. 26	Flagler	W 105-68
Nov. 30	Piedmont	W 62-59
Dec. 2	Georgia Southwestern	L 66-83
Dec. 8	North Georgia	W 83-78
Dec. 10	Berry	L 69-92
Dec. 13	at UNC Asheville	L 72-77
Jan. 4	Shorter	L 72-84
Jan. 8	Fort Valley State	L 65-89
Jan. 10	at Piedmont	W 86-78
Jan. 11	at North Georgia	L 53-61
Jan. 13	at Kennesaw State	W 94-86
Jan. 18	at Flagler	W 88-54
Jan. 20	Augusta	W 88-82
Jan. 24	Kennesaw State	L 77-78
Jan. 25	UNC Asheville	W 85-71
Jan. 27	at Fort Valley State	L 79-80
Jan. 30	at Berry	L 71-83
Feb. 1	at Shorter	L 61-62
Feb. 5	at Georgia Southwestern	L 68-88
Feb. 15	at Georgia College	L 77-84
Feb. 17	at Winthrop	L 52-72
Feb. 21	Georgia College	L 78-87
Feb. 22	at Augusta	L 57-63

1986-87 NO TEAM

1987-88 (5-18)

Nov. 21	Florida Memorial	L 56-65
Nov. 24	at Fort Valley State	L 52-90
Dec. 5	at Savannah State	L 70-76 ot
Dec. 8	at West Georgia	L 69-95
Dec. 12	at Edward Waters	L 70-91
Dec. 14	Valdosta State	L 62-113
Jan. 8	Paine	L 49-77
Jan. 9	at Valdosta State	L 42-103
Jan. 14	Edward Waters	W 62-51
Jan. 18	Flagler	W 74-68
Jan. 21	Georgia Southern	L 55-93
Jan. 23	Columbia	W 98-84
Jan. 27	West Georgia	L 24-79
Jan. 30	Georgia College	L 51-102
Feb. 4	Savannah State	L 48-81

Feb. 6	at Flagler	W 58-49
Feb. 11	N Savannah State	L 52-69
Feb. 13	at Columbia	W 79-67
Feb. 16	Fort Valley State	L 68-109
Feb. 18	at Paine	L 47-108
Feb. 20	at Georgia College	L 76-114
Feb. 22	N Savannah State	L 66-78
Feb. 25	at Georgia Southern	L 34-89

1988-89 (3-21)

North Georgia Invitational		
Nov. 18	at North Georgia	L 56-84
Nov. 19	vs. Cumberland (Ky.)	L 55-112
Nov. 21	Georgia College	L 65-97
Nov. 23	Florida Atlantic	L 43-106
Nov. 26	Valdosta State	L 48-98
Dec. 6	at Savannah State	L 42-60
Dec. 9	at West Georgia	L 68-96
Dec. 10	at Alabama-Huntsville	L 45-59
Jan. 7	Converse	L 44-88
Jan. 13	Edinboro (Pa.)	L 48-97
Jan. 17	at Eckerd	L 43-77
Jan. 18	at Tampa	L 69-81
Jan. 21	West Georgia	L 32-95
Jan. 24	Flagler	L 56-67
Jan. 25	at Savannah State	L 44-71
Jan. 28	Columbia	L 66-73
Feb. 4	Alabama-Huntsville	L 51-81
Feb. 6	Savannah State	W 67-60
Feb. 8	at Columbia	W 54-53
Feb. 11	at Valdosta State	L 28-92
Feb. 14	at Flagler	L 52-65
Feb. 16	Florida Memorial	W 84-81
Feb. 18	at Georgia College	L 36-79
Feb. 21	Savannah State	L 60-67

1989-90 (15-9)

Nov. 21	Florida Tech	W 83-78 ot
Nov. 25	Saint Leo	W 67-45
Nov. 30	at Coker	W 67-59
Dec. 3	at Tampa	W 56-52
Dec. 9	Florida Atlantic	L 35-73
Dec. 11	at Saint Leo	W 78-56
Dec. 13	at Florida Tech	L 46-69
Jan. 11	Savannah State	W 63-57
Jan. 13	at Rollins	L 63-87
Jan. 20	at Columbus	L 76-79
Jan. 22	Eckerd	W 75-65
Jan. 24	USC Spartanburg	L 57-70
Jan. 27	Alabama-Huntsville	W 64-45
Jan. 30	Coker	W 70-62
Feb. 3	at USC Spartanburg	L 38-63
Feb. 5	Georgia College	W 73-65
Feb. 7	at Flagler	W 76-44
Feb. 10	at Piedmont	W 64-46
Feb. 12	at USC Aiken	L 49-70
Feb. 15	at Savannah State	L 52-66
Feb. 17	Piedmont	W 72-40
Feb. 19	at Georgia College	L 54-71
Feb. 21	Flagler	W 69-51
Feb. 24	Columbus	W 75-57

1990-91 (10-14, 5-7 PBC)

Nov. 17	at Coker	L 57-68
Nov. 20	Florida Tech	L 46-49
Nov. 27	at Savannah State	L 66-72
Dec. 1	Coker	L 52-53
Dec. 6	at Alabama-Huntsville	L 42-62
Dec. 8	Saint Leo	W 73-48
Dec. 12	at Saint Leo	W 83-48
Dec. 14	at Florida Tech	W 54-53
Dec. 29	at Georgia College *	L 50-62
Jan. 5	at Lander *	W 64-54
Jan. 7	USC Spartanburg *	W 72-64
Jan. 10	Rollins	L 43-62

Jan. 12	USC Aiken *	L 43-61
Jan. 19	Columbus *	W 57-55
Jan. 23	Savannah State	L 37-52
Jan. 26	at Francis Marion *	L 81-85 2ot
Jan. 30	at USC Spartanburg *	L 37-52
Feb. 2	Lander *	W 51-49
Feb. 5	Flagler	W 69-40
Feb. 9	at USC Aiken *	L 38-49
Feb. 12	at Flagler	W 77-48
Feb. 16	Francis Marion *	W 56-54
Feb. 20	Georgia College *	L 52-54
Feb. 23	at Columbus *	L 52-64

* Peach Belt Athletic Conference

1991-92 (14-13, 5-9 PBC)

Nov. 24	Saint Leo	L 74-77
Nov. 27	at Spelman	W 70-51
Dec. 9	at Flagler	W 63-38
Dec. 11	at Saint Leo	W 76-60
Dec. 14	at Florida Tech	L 55-72
Jan. 4	Georgia College *	L 68-76
Jan. 6	at Brewton-Parker	W 70-69 ot
Jan. 8	Francis Marion *	L 64-66
Jan. 11	at Lander *	L 61-63 ot
Jan. 13	Savannah State	W 69-64
Jan. 15	at Augusta *	L 45-61
Jan. 18	USC Aiken *	L 69-75
Jan. 22	at Columbus *	L 59-81
Jan. 25	USC Spartanburg *	L 58-75
Jan. 27	Savannah State	L 62-63
Jan. 29	at Georgia College *	L 59-66
Feb. 1	at USC Spartanburg *	W 69-56
Feb. 5	Columbus *	W 60-52
Feb. 8	Lander *	W 81-44
Feb. 10	Flagler	W 66-38
Feb. 12	Augusta *	W 63-46
Feb. 15	at Francis Marion *	L 54-58
Feb. 17	Spelman	W 79-49
Feb. 19	Brewton-Parker	W 89-84
Feb. 22	at USC Aiken *	W 56-53

Peach Belt Athletic Conference Tmt (Augusta)

Feb. 26	USC Spartanburg	W 72-53
Feb. 28	at Augusta	L 63-71

1992-93 (16-10, 10-6 PBC)

North Georgia Invitational		
Nov. 20	North Georgia	W 68-53
Nov. 21	vs. Cumberland (Ky.)	L 67-68
Nov. 24	Brewton-Parker	W 62-55
Nov. 29	Presbyterian	L 70-74 ot
Dec. 3	at Brewton-Parker	L 58-80
Dec. 5	Saint Leo	W 75-53
Dec. 10	North Georgia	W 69-65
Dec. 12	at Voorhees	W 58-33
Dec. 17	at Saint Leo	W 67-49
Jan. 7	Georgia College *	W 68-51
Jan. 9	at USC Spartanburg *	L 57-83
Jan. 11	at Lander *	W 63-53
Jan. 16	at Columbus *	L 62-69
Jan. 18	Augusta *	L 49-62
Jan. 23	UNC Pembroke *	W 73-61
Jan. 25	at Francis Marion *	W 56-39
Jan. 30	at USC Aiken *	W 65-57
Feb. 1	at Augusta *	L 57-69
Feb. 6	USC Spartanburg *	L 68-79
Feb. 8	Columbus *	W 82-56
Feb. 11	Francis Marion *	W 52-42
Feb. 15	Lander *	W 75-44
Feb. 20	at UNC Pembroke *	W 74-42
Feb. 22	USC Aiken *	W 71-59
Feb. 27	at Georgia College *	L 63-69 ot

Peach Belt Athletic Conference Tmt (Augusta)

Mar. 4	vs. Columbus	L 60-70
--------	--------------	---------

ARMSTRONG WON ITS FIRST PBC GAME, 64-54, OVER LANDER ON 1/5/91





1993-94 (17-9, 11-5 PBC)

North Georgia Rotary Classic

Nov. 19	vs. <i>Clafin</i>	L 71-92
Nov. 20	vs. <i>Piedmont</i>	W 78-60
Nov. 23	at Savannah State	L 68-75 ot
Dec. 2	Brewton-Parker	W 54-45
Dec. 6	at Brewton-Parker	W 53-44
Dec. 8	at Coker	W 48-37
Dec. 11	Florida Tech	W 69-60
Jan. 6	at Georgia College *	L 60-62
Jan. 8	USC Spartanburg *	L 56-70
Jan. 10	Lander *	W 83-35
Jan. 15	Columbus *	L 56-63
Jan. 17	Augusta *	W 67-56
Jan. 22	at UNC Pembroke *	W 64-55
Jan. 24	at Francis Marion *	L 43-45
Jan. 26	Savannah State	L 77-79 ot
Jan. 29	USC Aiken *	W 61-55
Jan. 31	at Augusta *	W 66-59
Feb. 5	at USC Spartanburg *	L 42-69
Feb. 10	Francis Marion *	W 72-56
Feb. 14	at Lander *	W 60-59
Feb. 16	at Columbus *	W 62-61
Feb. 19	UNC Pembroke *	W 74-44
Feb. 21	at USC Aiken *	W 59-48
Feb. 26	Georgia College *	W 66-64

Peach Belt Athletic Conference Tmt (Augusta)

Mar. 3	vs. <i>USC Aiken</i>	W 72-60
Mar. 5	vs. <i>Columbus</i>	L 64-71

* Peach Belt Athletic Conference

1994-95 (12-17, 8-10 PBC)

Savannah News Press Holiday Classic

Nov. 23	vs. <i>Savannah State</i>	L 65-82
Nov. 26	at North Florida	L 59-76
Nov. 30	Coker	W 77-75
Dec. 3	at Valdosta State	L 62-80
Dec. 10	at Rollins	L 53-80
Dec. 13	Kennesaw State *	L 86-87

Lady Pirate Invitational

Dec. 17	<i>North Florida</i>	W 79-70
Dec. 18	<i>Mars Hill</i>	L 56-81
Dec. 30	at Georgia Southern	L 47-97
Jan. 4	at USC Aiken *	W 58-53
Jan. 11	Augusta *	L 77-74
Jan. 14	at Francis Marion *	L 58-76
Jan. 16	Georgia College *	W 75-45
Jan. 18	at Columbus *	L 53-70
Jan. 21	USC Spartanburg *	L 72-77
Jan. 25	at UNC Pembroke *	L 78-79
Jan. 28	Lander *	W 69-59
Feb. 1	USC Aiken *	W 67-55
Feb. 4	at Kennesaw State *	L 70-80
Feb. 8	at Augusta *	L 65-72
Feb. 11	Francis Marion *	W 59-54
Feb. 13	at Georgia College *	L 70-75
Feb. 15	Columbus *	L 70-75
Feb. 18	at USC Spartanburg *	L 46-68
Feb. 22	UNC Pembroke *	W 63-60
Feb. 25	at Lander *	W 64-61

Peach Belt Athletic Conference Tmt (Augusta)

Mar. 1	vs. <i>Kennesaw State</i>	W 67-65
Mar. 3	at <i>Augusta</i>	W 82-65
Mar. 4	vs. <i>USC Spartanburg</i>	L 49-69

1995-96 (9-18, 7-11 PBC)

Bellarmino Invitational

Nov. 18	vs. <i>North Alabama</i>	W 69-65
Nov. 29	at <i>Bellarmino</i>	L 50-83

Savannah News Press Holiday Classic

Nov. 22	vs. <i>Savannah State</i>	W 71-57
Nov. 29	Lenoir-Rhyne	L 75-80

Lady Pirate Invitational

Dec. 2	<i>Barton</i>	L 70-73
Dec. 3	<i>Clayton State</i>	L 55-70

Dec. 16	at Saint Leo	L 71-78
Dec. 31	Michigan - Dearborn	L 63-67 ot
Jan. 3	USC Aiken *	W 85-50
Jan. 6	at Kennesaw State *	L 59-80
Jan. 10	at Augusta *	L 59-68
Jan. 13	Francis Marion *	L 54-69
Jan. 15	at Georgia College *	L 70-74
Jan. 17	Columbus *	L 53-59
Jan. 20	at USC Spartanburg *	L 61-95
Jan. 24	UNC Pembroke *	W 80-71
Jan. 27	at Lander *	W 57-55
Jan. 31	at USC Aiken *	W 69-59
Feb. 3	Kennesaw State *	W 74-63
Feb. 7	Augusta *	L 72-74
Feb. 10	at Francis Marion *	L 57-65
Feb. 12	Georgia College *	W 75-65
Feb. 14	at Columbus *	L 62-88
Feb. 17	USC Spartanburg *	L 70-73 ot
Feb. 21	at UNC Pembroke *	L 81-82
Feb. 24	Lander *	W 69-60

Peach Belt Athletic Conference Tmt (Milledgeville)

Feb. 28	at <i>Georgia College</i>	L 60-76
---------	---------------------------	---------

1996-97 (14-13, 10-8 PBC)

Nov. 23	at Charleston Southern	L 44-67
Nov. 25	Saint Leo	W 65-62
Dec. 1	Barry	W 59-51

North Florida Tournament

Dec. 6	vs. <i>Alabama-Huntsville</i>	L 53-68
Dec. 7	vs. <i>Brewton-Parker</i>	W 75-57
Dec. 10	at Clayton State	L 67-76
Dec. 14	Presbyterian	W 58-54
Dec. 17	Clayton State	L 43-52
Jan. 2	at USC Aiken *	W 64-47
Jan. 4	Kennesaw State *	W 78-63
Jan. 8	Augusta State *	L 61-76
Jan. 11	at Francis Marion *	L 33-69
Jan. 13	Georgia C&SU *	L 54-72
Jan. 15	at Columbus State *	W 70-65
Jan. 18	USC Spartanburg *	L 63-72
Jan. 22	at UNC Pembroke *	W 80-72
Jan. 25	Lander *	W 54-46
Jan. 29	USC Aiken *	L 51-79
Feb. 1	at Kennesaw State *	L 58-76
Feb. 6	at Augusta State *	L 61-63
Feb. 8	Francis Marion *	W 61-58
Feb. 10	at Georgia C&SU *	L 60-79
Feb. 12	Columbus State *	W 58-56
Feb. 15	at USC Spartanburg *	W 84-78
Feb. 19	UNC Pembroke *	W 78-62
Feb. 22	at Lander *	W 68-52

Peach Belt Athletic Conference Tmt (Milledgeville)

Feb. 26	vs. <i>Georgia C&SU</i>	L 54-68
---------	-----------------------------	---------

1997-98 (12-16, 5-11 PBC)

Nov. 19	at Presbyterian	L 55-69
Nov. 22	at Savannah State	W 66-61
Nov. 24	Barton	L 60-65
Nov. 29	at Lynn	W 74-56
Nov. 30	at Barry	L 40-82

Horton Home Christmas Classic

Dec. 5	vs. <i>Georgia Southwestern</i>	W 66-59
Dec. 6	vs. <i>Piedmont</i>	W 54-43
Dec. 10	at Kennesaw State *	L 59-81
Dec. 13	Clayton C&SU *	W 58-49
Dec. 15	Florida Tech	W 59-47
Dec. 17	Augusta State *	L 56-80
Dec. 30	Davis & Elkins	W 69-55
Jan. 3	Georgia C&SU *	L 55-74
Jan. 8	at Francis Marion *	L 53-69
Jan. 10	Lander *	L 72-55
Jan. 17	at Columbus State *	L 52-90
Jan. 21	North Florida *	L 38-52
Jan. 24	at Georgia C&SU *	L 77-93
Jan. 28	UNC Pembroke *	W 56-48

Jan. 31	at Augusta State *	L 79-83
Feb. 2	USC Spartanburg *	W 75-64
Feb. 4	at North Florida *	L 42-58
Feb. 7	Columbus State *	L 82-84
Feb. 11	Kennesaw State *	L 50-74
Feb. 14	at USC Aiken *	W 58-50
Feb. 17	at Clayton C&SU *	L 58-61

Peach Belt Athletic Conference Tmt (Savannah)

Feb. 20	<i>Lander</i>	W 71-65
Feb. 22	<i>Columbus State</i>	L 71-81

1998-99 (13-15, 6-10 PBC)

North Florida Tip-Off Classic

Nov. 14	vs. <i>Florida Tech</i>	L 78-80
Nov. 15	vs. <i>Florida Memorial</i>	W 69-56
Nov. 18	at Augusta State *	W 58-54
Nov. 22	at Valdosta State	L 60-78
Nov. 24	Morris College	W 59-56
Nov. 28	at Belmont Abbey	L 58-79
Dec. 3	Florida Tech	W 78-72
Dec. 5	Savannah State	W 74-61
Dec. 9	Kennesaw State *	L 52-76
Dec. 12	at Clayton C&SU *	W 75-41
Dec. 18	Quincy	W 71-62
Dec. 19	Lenoir-Rhyne	L 57-60
Jan. 2	at Georgia C&SU *	L 73-85
Jan. 6	Francis Marion *	L 65-76
Jan. 9	at Lander *	L 56-69
Jan. 16	Columbus State *	L 78-85
Jan. 20	at North Florida *	L 61-64
Jan. 23	Georgia C&SU *	L 41-68
Jan. 27	at UNC Pembroke *	L 67-71
Jan. 30	Augusta State *	W 68-52
Feb. 1	at USC Spartanburg *	W 59-44
Feb. 3	North Florida *	W 51-50
Feb. 6	at Columbus State *	L 59-96
Feb. 10	at Kennesaw State *	L 39-60
Feb. 13	USC Aiken *	W 103-61
Feb. 17	Clayton C&SU *	W 84-62

Peach Belt Athletic Conference Tmt (Savannah)

Feb. 19	<i>UNC Pembroke</i>	W 69-60
Feb. 21	<i>Kennesaw State</i>	L 75-78

1999-2000 (7-19, 4-12 PBC)

Lady Pirate/Chatham Orthopaedic TipOff Classic

Nov. 19	<i>Florida Memorial</i>	W 86-53
Nov. 20	<i>Presbyterian</i>	L 51-61
Nov. 23	<i>Valdosta State</i>	W 58-56

Mount Olive Thanksgiving Classic (Mt. Olive, N.C.)

Nov. 26	vs. <i>Fayetteville State</i>	L 58-69
Nov. 27	vs. <i>Elizabeth City State</i>	L 51-59
Dec. 1	at Morris College	L 67-70
Dec. 4	at Savannah State	L 58-64
Dec. 11	at Kennesaw State *	L 57-70

Eckerd College Holiday Sunspree Classic

Dec. 17	at <i>Eckerd</i>	W 74-57
Dec. 18	vs. <i>Rollins</i>	L 66-89
Dec. 30	<i>Catawba</i>	L 44-57
Jan. 2	Georgia College & State *	L 78-82
Jan. 5	at Francis Marion *	L 56-76
Jan. 8	Lander *	L 58-62
Jan. 15	at Columbus State *	L 56-75
Jan. 19	North Florida *	L 68-77
Jan. 22	at Georgia College & State *	L 64-69
Jan. 26	UNC Pembroke *	W 64-63
Jan. 29	Kennesaw State *	L 59-68
Feb. 2	at North Florida *	L 54-60
Feb. 5	Columbus State *	W 77-75
Feb. 12	at USC Aiken *	L 76-87
Feb. 16	at Clayton College & State *	L 76-78
Feb. 19	USC Spartanburg *	W 53-45
Feb. 23	at Augusta State *	L 59-62
Feb. 26	Clayton College & State *	W 74-65



ALL-TIME RESULTS



2000-01 (10-16, 5-11 PBC)

Lady Pirate/Chatham Orthopaedic TipOff Classic

Nov. 17	Mount Olive	W 81-68
Nov. 18	Northern Michigan	L 64-80

Catawba AllSport Classic

Nov. 24	at Catawba	L 63-75
Nov. 25	vs. Livingstone	L 48-66
Nov. 29	at Spelman	W 79-61
Dec. 6	Spelman	W 90-56
Dec. 9	Kennesaw State *	L 54-78
Dec. 12	Savannah State	W 78-64
Dec. 15	Lenoir-Rhyne	L 56-69
Dec. 30	Gardner-Webb	L 81-88
Jan. 3	Francis Marion *	W 75-72 ot
Jan. 6	at Lander *	W 76-74
Jan. 8	Nova Southeastern	W 84-71
Jan. 13	Columbus State *	L 58-84
Jan. 17	at North Florida *	L 69-71
Jan. 20	at Georgia College & State *	L 64-75
Jan. 24	at UNC Pembroke *	L 72-77
Jan. 27	at Kennesaw State *	L 60-87
Jan. 31	North Florida *	W 57-54
Feb. 3	at Columbus State *	L 41-96
Feb. 5	Georgia College & State *	L 67-83
Feb. 10	USC Aiken *	L 60-61
Feb. 14	Clayton College & State *	L 51-76
Feb. 17	at USC Spartanburg *	W 73-58
Feb. 21	Augusta State *	W 66-61
Feb. 24	at Clayton College & State *	L 58-61

2001-02 (11-18, 7-12 PBC)

2001 Armstrong/Chatham Orthopaedics TipOff Classic

Nov. 16	Fayetteville State	L 76-91
Nov. 17	Ferris State	L 65-76
Nov. 21	at Fort Valley State	L 47-53
Nov. 24	at Nicholls State	L 51-62
Nov. 28	at Francis Marion *	L 56-80
Dec. 1	Lander *	W 57-52
Dec. 4	Savannah State	W 69-48
Dec. 10	at Savannah State	W 46-45
Dec. 19	at Lenoir-Rhyne	L 62-76
Jan. 5	USC Spartanburg *	W 66-52
Jan. 7	at UNC Pembroke *	L 75-77 ot
Jan. 9	USC Aiken *	L 61-74
Jan. 12	Columbus State *	W 61-45
Jan. 16	Francis Marion *	W 50-48
Jan. 19	at USC Spartanburg *	L 54-67
Jan. 23	GC&SU *	L 58-66
Jan. 26	UNC Pembroke *	L 53-56
Jan. 30	at Augusta State *	W 70-69
Feb. 2	at Kennesaw State *	L 69-72
Feb. 4	at Clayton State *	L 50-64
Feb. 6	North Florida *	L 64-71
Feb. 9	Clayton State *	W 65-53
Feb. 13	at North Florida *	L 59-67
Feb. 16	at Columbus State *	L 63-73
Feb. 20	at GC&SU *	L 65-68
Feb. 23	Kennesaw State *	W 75-68

Peach Belt Conference Tournament (Columbus, Ga.)

Feb. 26	vs. UNC Pembroke	W 82-73
Feb. 28	vs. Kennesaw State	W 62-57
Mar. 2	vs. GC&SU	L 64-72

2002-03 (27-4, 17-2 PBC)

2002 FMU/Sleep Inn Classic (Florence, S.C.)

Nov. 22	vs. Pfeiffer	W 54-49
Nov. 23	vs. Anderson	W 96-61
Dec. 4	at Rollins	W 65-54
Dec. 7	Clayton State *	W 72-53
Dec. 17	at Shaw	L 43-64

2002 Chatham Orthopaedics Christmas Classic

Dec. 20	Wingate	W 91-55
Dec. 21	Fort Valley State	W 89-73
Dec. 30	Valdosta State	W 69-45
Jan. 2	Francis Marion *	W 81-48

Jan. 4	at Lander *	W 82-72
Jan. 8	Spelman	W 85-41
Jan. 11	at USC Spartanburg *	W 84-49
Jan. 13	UNC Pembroke *	W 84-61
Jan. 15	at USC Aiken *	W 80-69
Jan. 18	at Columbus State *	L 68-71
Jan. 22	at Francis Marion *	L 61-62 ot
Jan. 25	USC Spartanburg *	W 78-46
Jan. 29	at GC&SU *	W 85-73
Feb. 1	at UNC Pembroke *	W 88-63
Feb. 5	Augusta State *	W 86-53
Feb. 8	Kennesaw State *	W 77-61
Feb. 12	at North Florida *	W 69-58
Feb. 15	at Clayton State *	W 82-73
Feb. 19	North Florida *	W 78-68
Feb. 22	Columbus State *	W 75-55
Feb. 26	GC&SU *	W 76-53
Mar. 1	at Kennesaw State *	W 76-64

Peach Belt Conference Tournament (Columbus, Ga.)

Mar. 6	vs. Kennesaw State	W 65-60
Mar. 8	vs. USC Aiken	W 69-63
Mar. 9	at Columbus State	W 56-55

NCAA South Atlantic Regional (Salisbury, N.C.)

Mar. 14	vs. North Florida	L 64-65
---------	-------------------	---------

2003-04 (23-8, 12-4 PBC)

2003 Armstrong/Chatham Orthopaedics TipOff Classic

Nov. 21	Charleston (W. Va.)	L 77-62
Nov. 22	Fayetteville State	W 78-70
Nov. 25	Morris	W 75-59
Nov. 29	at Valdosta State	L 74-58
Dec. 3	Rollins	W 62-56
Dec. 6	Presbyterian	W 74-51
Dec. 16	at Tusculum	W 76-61
Dec. 18	at Mars Hill	W 75-69

2003 Barry University Holiday Invitational (Miami, Fla.)

Dec. 29	vs. Nova Southeastern	W 80-64
Dec. 30	at Barry	W 63-56
Jan. 2	Shaw	W 72-61
Jan. 7	at GC&SU *	W 78-67
Jan. 10	at Augusta State *	L 77-58
Jan. 14	Clayton State *	W 75-63
Jan. 17	Francis Marion *	W 74-46
Jan. 21	at Kennesaw State *	W 70-69
Jan. 24	Lander *	W 62-58
Jan. 28	at Clayton State *	L 84-77
Jan. 31	at UNC Pembroke *	W 51-48
Feb. 4	Kennesaw State *	W 76-71
Feb. 7	USC Aiken *	W 67-54
Feb. 11	at North Florida *	L 62-61
Feb. 14	at Columbus State *	W 57-54
Feb. 18	GC&SU *	W 82-78
Feb. 21	at USC Spartanburg *	W 78-76
Feb. 25	North Florida *	L 73-68
Feb. 28	Columbus State *	W 72-41

Peach Belt Conference Tournament (Augusta, Ga.)

Mar. 4	vs. Francis Marion	W 63-52
Mar. 6	vs. Lander	L 67-64

NCAA South Atlantic Regional (Raleigh, N.C.)

Mar. 12	vs. North Florida	W 75-68
Mar. 13	vs. Augusta State	L 79-74

2004-05 (17-13, 7-9 PBC)

Disney's Division II TipOff Classic (Orlando, Fla.)

Nov. 5	vs. Anderson	L 84-77
Nov. 6	vs. Mesa State	W 65-45
Nov. 7	vs. USC Aiken	L 67-60
Nov. 20	Northwood (Mich.)	W 71-59
Nov. 23	at Morris	W 71-59

Eckerd College SunSpree Invitational (St. Petersburg, Fla.)

Nov. 26	vs. Florida Southern	L 82-60
Nov. 27	at Eckerd	W 61-47
Nov. 30	Valdosta State	W 58-47
Dec. 4	at Presbyterian	W 75-68
Dec. 13	Fayetteville State	W 86-78

2004 Chatham Orthopaedics Holiday Classic

Dec. 17	Lenoir-Rhyne	W 67-62 ot
Dec. 18	Mars Hill	W 60-46
Dec. 21	at Florida Tech	L 68-64
Dec. 30	at Fayetteville State	W 72-62
Jan. 5	GC&SU *	W 72-69
Jan. 8	Augusta State *	W 55-51
Jan. 12	at Clayton State *	L 77-63
Jan. 15	at Francis Marion *	L 77-72
Jan. 19	Kennesaw State *	W 74-70
Jan. 22	at Lander *	W 72-65
Jan. 26	Clayton State *	L 69-67
Jan. 29	UNC Pembroke *	W 72-52
Feb. 2	at Kennesaw State *	L 76-71
Feb. 5	at USC Aiken *	L 64-54
Feb. 9	North Florida *	W 64-44
Feb. 12	Columbus State *	W 76-73
Feb. 16	at GC&SU *	L 92-81
Feb. 19	USC Upstate *	L 61-56
Feb. 23	at North Florida *	L 75-47
Feb. 26	at Columbus State *	L 92-83

2005-06 (15-13, 10-10 PBC)

C-N Lady Eagle Classic (Jefferson City, Tenn.)

Nov. 18	vs. Mars Hill	W 80-69
Nov. 19	at Carson-Newman	W 72-61
Nov. 22	at Valdosta State	L 71-49
Nov. 30	Clayton State *	L 78-60
Dec. 3	at Columbus State *	L 76-54
Dec. 13	Fayetteville State	L 84-66

2005 Chatham Orthopaedics Holiday Classic

Dec. 16	Tusculum	W 86-84 ot
Dec. 17	Carson-Newman	W 58-53
Dec. 20	Florida Tech	W 57-55
Dec. 30	at USC Aiken *	W 75-70
Jan. 4	Francis Marion *	W 64-47
Jan. 7	at UNC Pembroke *	L 70-59
Jan. 11	Lander *	W 68-40
Jan. 18	USC Upstate *	L 60-56
Jan. 21	at North Georgia *	L 93-85
Jan. 23	Augusta State *	L 54-47
Jan. 25	at Clayton State *	L 78-60
Jan. 28	Columbus State *	W 47-43
Feb. 1	at Augusta State *	W 65-54
Feb. 4	USC Aiken *	W 67-62
Feb. 6	at GCSU *	L 63-62
Feb. 8	at Francis Marion *	L 58-56
Feb. 11	UNC Pembroke *	W 58-48
Feb. 15	at Lander *	W 78-64
Feb. 20	GCSU *	W 75-61
Feb. 22	at USC Upstate *	W 73-71
Feb. 25	North Georgia *	L 74-61

Peach Belt Conference Tournament (Greenwood, S.C.)

Mar. 2	vs. GCSU	L 63-60
--------	----------	---------



ARMSTRONG AVERAGED 16 WINS A SEASON IN THE 2000s





ALL-TIME RESULTS

2006-2007 (15-14, 8-8 PBC)

Nov. 18	Eckerd	W 64-59
Nov. 21	at Lenoir-Rhyne	W 85-81
Nov. 25	Shaw	W 74-59
Nov. 28	at Florida Tech	L 72-63
2006 NC Central Classic (Raleigh, N.C.)		
Dec. 1	vs. Elizabeth City State	L 70-53
Dec. 2	at NC Central	L 77-70
Dec. 5	Lenoir-Rhyne	W 69-66
2006 Chatham Orthopedics Holiday Classic		
Dec. 15	Lander	W 73-71
Dec. 16	Fayetteville State	L 87-74
Dec. 19	Florida Tech	W 72-56
Dec. 30	at Fayetteville State	L 89-83
Jan. 3	GCSU *	W 71-67
Jan. 6	North Georgia *	W 71-65
Jan. 10	at Clayton State *	L 80-58
Jan. 13	at Francis Marion *	W 65-51
Jan. 17	Augusta State *	W 73-71
Jan. 20	at Lander *	L 85-80
Jan. 24	Clayton State *	L 82-72
Jan. 27	UNC Pembroke *	L 81-66
Jan. 31	at Augusta State *	L 67-64 ot
Feb. 3	at USC Aiken *	L 78-58
Feb. 7	Georgia Southwestern State *	W 78-48
Feb. 10	Columbus State *	W 74-63
Feb. 14	at GCSU *	L 79-71
Feb. 17	USC Upstate *	W 81-74
Feb. 22	at Georgia Southwestern State *	W 65-59
Feb. 24	at Columbus State *	L 70-60
2007 Peach Belt Conference Championships (Greenwood, S.C.)		
Feb. 28	vs. USC Upstate	W 76-63
March 1	vs. Clayton State	L 73-70

* Peach Belt Conference

2007-2008 (20-11, 11-9 PBC)

2007 Manwell Produce Lady Blazer Classic (Valdosta)		
Nov. 16	vs. Alabama-Huntsville	W 74-57
Nov. 17	at Valdosta State	L 66-54
Nov. 20	at Cal Poly Pomona	W 66-59
Nov. 21	at Cal State Los Angeles	W 66-60
Nov. 28	North Georgia *	W 63-62
Dec. 1	at USC Aiken *	L 74-68
Dec. 5	North Carolina Central	W 54-44
2007 Chatham Orthopedics Holiday Classic		
Dec. 18	Queens (NC)	W 77-60
Dec. 19	Mars Hill	W 66-64
Jan. 5	UNC Pembroke *	W 61-58
Jan. 9	at Georgia Southwestern St. *	W 72-54
Jan. 12	Augusta State *	L 79-67
Jan. 16	at GCSU *	L 71-67
Jan. 21	at North Georgia *	L 78-66
Jan. 23	at Columbus State *	L 80-49
Jan. 26	Lander *	W 66-52
Jan. 30	at Clayton State *	L 62-47
Feb. 2	USC Aiken *	W 77-65
Feb. 4	at Francis Marion *	L 73-69
Feb. 6	Georgia Southwestern State *	W 59-43
Feb. 9	at UNC Pembroke *	W 66-59 ot
Feb. 13	GCSU *	W 67-61
Feb. 16	at Augusta State *	L 65-42
Feb. 18	Clayton State *	W 67-63
Feb. 21	Columbus State *	W 73-54
Feb. 27	Francis Marion *	W 78-65
March 1	at Lander *	L 97-87
2008 Peach Belt Conference Championships (Aiken, S.C.)		
March 5	vs. UNC Pembroke	W 74-68
March 6	vs. Clayton State	W 68-66
March 8	vs. Columbus State	W 78-68
March 9	vs. Lander	L 68-65

* Peach Belt Conference

2008-2009 (17-11, 12-8 PBC)

2008 Concord Lady Lion Classic (Concord, W. Va.)		
Nov. 15	vs. Fairmont State	W 71-58
Nov. 16	at Concord (W. Va.)	W 78-76
Nov. 20	Pfeiffer	W 70-58
Nov. 25	Newberry	L 63-57
Nov. 29	Limestone	W 66-47
Dec. 2	at UNC Pembroke *	W 72-67
Dec. 4	USC Aiken *	W 63-55
2008 Chatham Orthopedics Holiday Classic		
Dec. 19	Wingate	L 73-61
Dec. 20	Valdosta State	W 61-48
Jan. 5	at North Georgia *	W 81-60
Jan. 7	Georgia Southwestern State *	W 78-60
Jan. 10	at Augusta State *	W 57-54
Jan. 14	GCSU *	L 74-45
Jan. 19	North Georgia *	L 62-46
Jan. 22	at Columbus State *	W 56-53
Jan. 24	at Lander *	L 85-71
Jan. 28	Clayton State *	L 76-42
Jan. 31	at USC Aiken *	L 60-56
Feb. 2	Francis Marion *	L 75-61
Feb. 4	at Georgia Southwestern St. *	L 76-71
Feb. 7	UNC Pembroke *	W 58-56
Feb. 11	at GCSU *	L 70-58
Feb. 14	Augusta State *	W 64-41
Feb. 16	at Clayton State *	L 90-41
Feb. 19	Columbus State *	W 57-48
Feb. 25	at Francis Marion *	W 92-91 ot
Feb. 28	Lander *	W 71-64
2009 Peach Belt Conference Championships (Aiken, S.C.)		
March 5	vs. Lander	L 83-63

* Peach Belt Conference

2009-2010 (9-17, 6-12 PBC)

Nov. 15	at Limestone	L 82-75
2009 Nova Southeastern / Marriott Tip-Off Classic		
Nov. 20	at Nova Southeastern	L 70-69
Nov. 21	vs. Barry	L 69-60
Nov. 25	at Newberry	L 64-61
Nov. 29	Pfeiffer	W 88-81
Dec. 5	at Augusta State *	W 76-63
2009 Hampton Inn & Suites Fall Finals Classic		
Dec. 18	Edward Waters	W 84-56
Dec. 19	Tampa	L 80-72
Jan. 2	at Flagler *	W 72-53
Jan. 6	Allen	W 90-45
Jan. 9	USC Aiken *	L 64-60
Jan. 13	Augusta State *	W 61-51
Jan. 16	GCSU *	L 58-50
Jan. 18	Montevallo *	L 62-54
Jan. 20	at Lander *	L 89-60
Jan. 23	at UNC Pembroke *	L 63-48
Jan. 27	at Clayton State *	L 83-64
Jan. 30	North Georgia *	L 68-60
Feb. 3	Flagler *	W 64-43
Feb. 6	at Francis Marion *	L 84-67
Feb. 8	Lander *	L 101-55
Feb. 11	at Georgia Southwestern *	W 55-53
Feb. 13	at Columbus State *	L 64-51
Feb. 20	at USC Aiken *	L 75-58
Feb. 24	UNC Pembroke *	W 83-80 ot
Feb. 27	Francis Marion *	L 104-81

* Peach Belt Conference

2010-2011 (8-18, 4-14 PBC)

Nov. 12	at Converse	W 56-47
Nov. 15	Allen	W 72-47
2010 Saint Leo Sleep Inn Classic		
Nov. 19	at Saint Leo	L 67-63
Nov. 20	vs. Florida Southern	L 82-65
Nov. 30	Edward Waters	W 70-58
Dec. 4	Augusta State *	W 77-73
Dec. 14	Columbia (S.C.)	W 95-59
2010 Hampton Inn & Suites Fall Finals Classic		
Dec. 17	Mount Olive	L 86-66
Dec. 18	Anderson (S.C.)	L 70-61
Jan. 3	Flagler *	W 70-67
Jan. 8	at USC Aiken *	L 91-61
Jan. 12	at Augusta State *	W 74-52
Jan. 15	at Georgia College *	L 70-57
Jan. 17	at Montevallo *	L 78-63
Jan. 19	Lander *	L 88-71
Jan. 22	UNC Pembroke *	L 87-56
Jan. 26	Clayton State *	L 87-65
Jan. 29	at North Georgia *	W 55-48 ot
Feb. 2	at Flagler *	L 66-52
Feb. 5	Francis Marion *	L 75-70
Feb. 7	at Lander *	L 113-81
Feb. 10	Georgia Southwestern *	L 71-47
Feb. 12	Columbus State *	L 67-50
Feb. 19	USC Aiken *	L 73-65
Feb. 23	at UNC Pembroke *	L 82-53
Feb. 26	at Francis Marion *	L 98-56

2011-2012 (13-13, 7-11 PBC)

Nov. 11	Bluefield College	W 84-65
Nov. 14	Converse	W 67-43
2011 Wingate by Wyndham Pirate Classic		
Nov. 18	Young Harris	W 62-60
Nov. 19	Anderson (S.C.)	W 53-50
Nov. 22	Coastal Georgia	L 72-61
Nov. 29	Edward Waters	W 80-62
Dec. 3	Flagler *	W 88-64
Dec. 14	at USC Aiken *	L 73-54
Dec. 17	Francis Marion *	L 77-70 ot
Dec. 19	UNC Pembroke *	W 54-52
Dec. 30	Mars Hill	L 73-69
Jan. 4	at Augusta State *	W 73-64
Jan. 9	Georgia College *	L 57-45
Jan. 12	at Columbus State *	L 80-69
Jan. 14	at Georgia Southwestern *	W 80-73
Jan. 19	Montevallo *	W 58-56
Jan. 21	Clayton State *	L 93-48
Jan. 25	at North Georgia *	W 66-61
Jan. 28	Allen	W 74-47
Feb. 1	at Lander *	L 98-48
Feb. 4	USC Aiken *	L 65-55
Feb. 8	at Flagler *	W 64-52
Feb. 15	Lander *	L 85-52
Feb. 18	at UNC Pembroke *	L 74-48
Feb. 20	at Francis Marion *	L 66-63
Feb. 25	Augusta State *	L 55-53



ALL-TIME RESULTS



2012-2013 (13-14, 8-II PBC)

Nov. 1	at Savannah State (Exh.)	W 89-82 ot
Nov. 9	Eckerd	W 68-57
Nov. 12	Trinity Baptist	W 79-37
<i>2012 Fairfield Inn & Suites Pirate Classic</i>		
Nov. 16	Lynn	L 76-54
Nov. 17	Anderson (SC)	W 79-68
Nov. 25	Palm Beach Atlantic	W 77-64
Nov. 27	Allen	W 76-31
Dec. 15	North Georgia *	L 74-63
Dec. 17	Young Harris *	L 70-45
Dec. 30	Saginaw Valley	L 82-64
Jan. 3	at Clayton State *	L 71-54
Jan. 5	Francis Marion *	W 94-72
Jan. 10	Lander *	L 67-55
Jan. 12	at Augusta State *	L 75-70
Jan. 19	Columbus State *	L 72-68
Jan. 21	Georgia Southwestern *	W 79-36
Jan. 26	at Montevallo *	L 71-58
Jan. 31	Augusta State *	L 66-42
Feb. 2	at UNC Pembroke *	L 81-78 2ot
Feb. 7	at Flagler *	L 73-63
Feb. 9	USC Aiken *	W 69-67 ot
Feb. 14	at Lander *	L 50-45
Feb. 16	Flagler *	W 63-56
Feb. 20	UNC Pembroke *	W 71-61
Feb. 23	at USC Aiken *	W 53-49
Feb. 25	at Francis Marion *	W 75-61
March 2	at Georgia College *	W 71-69
<i>2013 Peach Belt Conference Championships (Columbus, Ga.)</i>		
March 7	vs. Clayton State	L 76-44
* Peach Belt Conference		

THE PIRATES WON THEIR LAST FIVE GAMES OF THE 2012-13 REGULAR SEASON





Historic Savannah, Georgia, is located on the Atlantic Coast, at the confluence of the Savannah River and the Atlantic Ocean. Throughout its history, there has been one adjective consistently used to describe Savannah: beautiful.

The reason? There's something about the unique beauty of Savannah that cannot be forgotten. Streets with canopies of moss-laden trees are honored venues for scores of historic homes. The town squares that Savannah's founding father, James Oglethorpe, laid out as public meeting places are now treasured "pocket parks" located throughout the downtown area.

A renovated waterfront area serves as the hub for shopping and entertainment. Nearby sandy beaches draw streams of visitors with persistent cool breezes and the endless lure of the rolling sea. Finally, there's an indescribable - but readily discernible - feeling in the air that pervades Savannah, a kind of "laid back" approach to the world, a "rootedness" that makes living or working in Savannah an experience second to none.

By way of affirmation, *Le Monde*, the leading French newspaper, called Savannah "the most beautiful city in North America."

Savannah has recently captured the imagination of a nation through its history and its appearance in several feature films, including "Glory," "Forrest Gump," "Something to Talk About," "Midnight In The Garden of Good and Evil," "The Legend of Bagger Vance," and the 2009 hit "The Last Song," starring Miley



Cyrus. Savannah also hosted the yachting events of the 1996 Summer Olympics and most recently served as the media home for the G-8 Summit. As a result, tourism has become one of the leading industries in the area.

Savannah hosts over six million tourists each year. Tourism impacts the Savannah area by more than \$634 million. The city boasts over 7,000 rooms and more than 100 restaurants as folks have learned that Savannah is more than just a convenient rest stop on the interstate to Florida.

The climate of Savannah features warm, and sometimes hot, weather for most of the year. There are seven months in which the average temperature is 70 degrees or higher. The lowest average high is in January at 60.3 degrees.

The population in Savannah is roughly 130,000 and Chatham County is the fifth most populous county in Georgia.

Savannah also sits centrally located to some of the Southeast's finest beaches. Tybee Island, located less than 30 minutes from Armstrong Atlantic State's campus, offers six miles of unspoiled sands, tempting seafood and gracious accommodations. Resort areas such as Hilton Head, South Carolina, are less than one hour away and provide even more relaxing getaway options.

Whether it's the lure of historic settings, the friendliness of a Southern community or the beautiful climate of southeast Georgia, Savannah is the place for you.

THE ARMSTRONG ATHLETIC DEPARTMENT WISHES TO THANK THE FOLLOWING FOR THEIR SUPPORT OF PIRATE ATHLETICS !



2013-14 ARMSTRONG PIRATES WOMEN'S BASKETBALL SCHEDULE

DATE	DAY	OPPONENT	TIME
Oct. 31	Thurs.	at Savannah State (Exhibition)	6:00 p.m.
Nov. 9	Sat.	at Benedict	6:00 p.m.
Nov. 13	Wed.	Columbia (S.C.)	6:00 p.m.
Nov. 16	Sat.	at Tampa	Noon
Nov. 23	Sat.	at Limestone	2:00 p.m.
Dec. 1	Sun.	Coker	2:00 p.m.
Dec. 14	Sat.	at North Georgia *	1:30 p.m.
Dec. 16	Mon.	at Young Harris *	11:00 a.m.
Dec. 21	Sat.	at Eckerd	3:00 p.m.
Jan. 2	Thurs.	Clayton State *	5:30 p.m.
Nov. 25	Sun.	Palm Beach Atlantic	1:30 p.m.
Jan. 4	Sat.	at Francis Marion *	1:30 p.m.
Jan. 8	Wed.	at Lander *	5:30 p.m.
Jan. 11	Sat.	GRU Augusta *	5:30 p.m.
Jan. 16	Thurs.	Francis Marion *	5:30 p.m.
Jan. 18	Sat.	at Columbus State *	1:30 p.m.
Jan. 20	Mon.	at Georgia Southwestern State *	5:30 p.m.
Jan. 23	Thurs.	UNC Pembroke *	5:30 p.m.
Jan. 25	Sat.	Montevallo *	1:30 p.m.
Jan. 30	Thurs.	at Augusta State *	5:30 p.m.
Feb. 1	Sat.	at UNC Pembroke *	1:30 p.m.
Feb. 6	Thurs.	Flagler *	5:30 p.m.
Feb. 8	Sat.	at USC Aiken *	5:30 p.m.
Feb. 12	Wed.	Lander *	5:30 p.m.
Feb. 15	Sat.	at Flagler *	1:30 p.m.
Feb. 22	Sat.	USC Aiken *	5:30 p.m.
March 1	Sat.	Georgia College *	1:30 p.m.
March 6-9	Thurs.-Sun.	PBC Championships (Columbus, Ga.)	
March 13-16	Fri.-Mon.	at NCAA DII Southeast Regional (Site TBA)	
March 25-28	Wed.-Sat.	at NCAA DII Elite Eight (Erie, Pa.)	

Bold denotes home game. * - Peach Belt Conference game

All home games webcast live on the internet at: <http://ustream.tv/armstrongpirates>