

The George-Anne

October 20, 1989

Follow this and additional works at: <https://digitalcommons.georgiasouthern.edu/george-anne>



Part of the [Higher Education Commons](#)

Recommended Citation

"The George-Anne" (1989). *The George-Anne*. 1145.
<https://digitalcommons.georgiasouthern.edu/george-anne/1145>

This newspaper is brought to you for free and open access by the Student Media at Digital Commons@Georgia Southern. It has been accepted for inclusion in The George-Anne by an authorized administrator of Digital Commons@Georgia Southern. For more information, please contact digitalcommons@georgiasouthern.edu.



The George-Anne

912/681-5246

Vol. 62, No. 10 • Friday, October 20, 1989

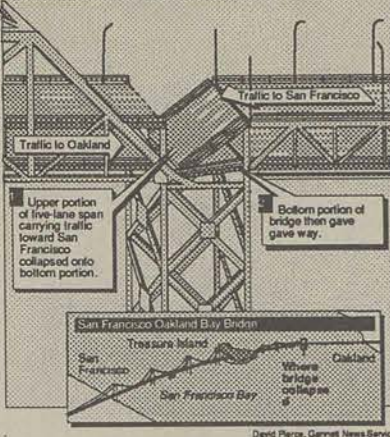
Since 1927, Georgia Southern's Official Student Newspaper

Georgia Southern College • Statesboro, GA 30460

Late News

Driving nightmare

Up to 50 feet of the upper deck of the roadway suddenly tipped onto the pavement below after the earthquake shook the Bay Bridge between San Francisco and Oakland.

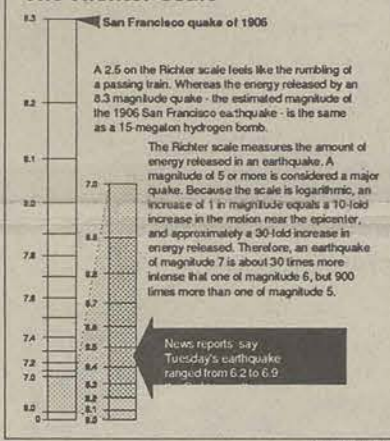


©Copyright 1989, USA TODAY/Apple College Information Network

REPAIRS BEGIN ON BAY BRIDGE:

Repairs begin Thursday on the Bay Bridge where a section of the top deck collapsed and damaged the bottom deck during Tuesday's earthquake in San Francisco. Lt. Gov. Leo McCarthy Wednesday called for an investigation about why the "quake-proof" structure was affected by the 6.9-quake. Both decks of the bridge will have to be rebuilt. Cost: More than \$200 million. Time: Two years.

The Richter scale



RESCUERS' HOPES DASHED:

More than 24 hours after Tuesday's earthquake in California, rescuers found what they thought was a survivor in the remains of the double-deck Nimitz Freeway that collapsed. They said someone trapped in rubble grabbed a rescuer's hand. After the rubble was removed, however, the person was dead. At least 272 are estimated dead, second only to the 1906 San Francisco quake that killed 700.

BUSH DECLARES DISASTER AREA:

President Bush signed an order that makes the Northern California earthquake area a disaster area — just 13 hours after the quake hit. He also visited the Federal Emergency Management Agency in Washington, D.C., which is coordinating response. He talked to Transportation Secretary Samuel Skinner on the phone about the quake and plans to visit the area this weekend.

RELIEF AGENCIES OFFER HELP:

Relief agencies from across the USA and around the world are responding to Tuesday's earthquake in San Francisco. Soviet President Mikhail Gorbachev sent a telegram to President Bush offering his sympathy and asked how his country could help. Calls also came from England and Ireland. The Red Cross advises that cash is preferred over food and clothing.

SERIES MAY RESUME TUESDAY:

The World Series, halted by Tuesday night's San Francisco Bay-area earthquake, will resume next Tuesday at the earliest in Candlestick Park, baseball commissioner Fay Vincent said Wednesday. Vincent said the delay was necessary to allow time for repairs to the stadium.

QUAKE MAY MOVE FOOTBALL GAME:

Football in earthquake-stricken San Francisco may be moved from Candlestick Park to Stanford, the Oakland-Alameda Coliseum or New England's Sullivan Stadium for Sunday's scheduled meeting between the San Francisco 49ers and the New England Patriots.

Knights invade Paulson Stadium tomorrow

By AL ALLNOCH
Managing Editor

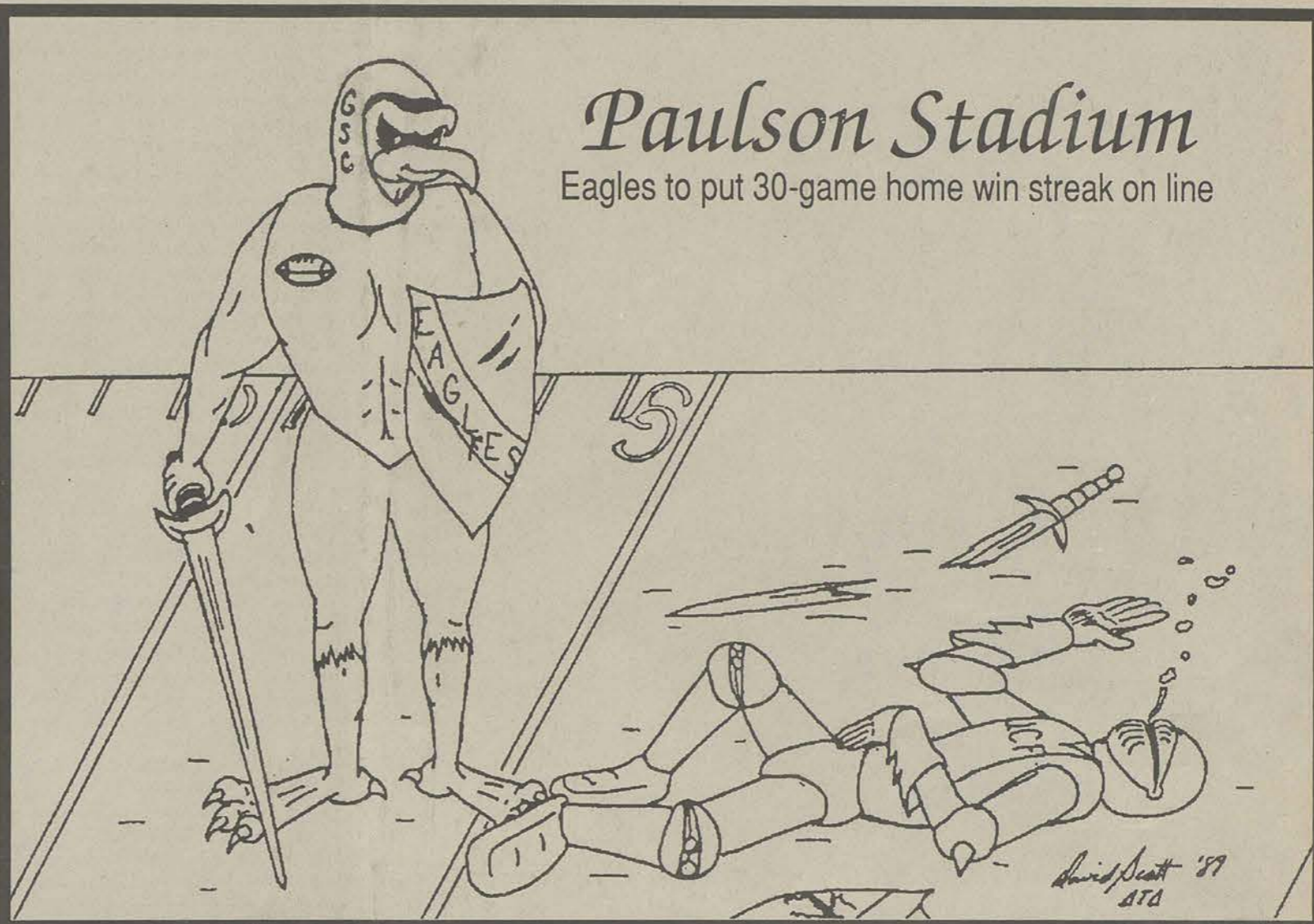
Tomorrow the Knights of Central Florida will march into Paulson Stadium wielding a new found weapon: TOUGH DEFENSE.

In GSC's previous seven games with UCF, the Knights have held the Eagles to below 30 points only twice, but that trend may change this season. Through their first six games this season, their first year in Division 1-AA, the 4-2 Knights have given up only 12.7 points per game and 223.8 yards of total offense.

Much of UCF's defensive turnaround can be attributed to a new defensive coordinator, who is none other than Rusty Russell, son of GSC head coach Erk Russell. "I have never seen a football team improve in one year in one facet of the game as Central Florida has from last year to this year," GSC scout Pat Spurgeon said.

"A lot of that is due to Coach Russell. They are better coached than they ever have been on defense. They've gone from among the weakest defensive teams that we've played up to now."

By no means are the Eagles lacking on offense, however. En route to their 6-0 record, GSC has averaged 31.5 points per game and 392.2 yards of total offense (285.5 yards rushing, 106.7 passing). Fullback Joe Ross leads the team in rushing. See Eagles, page 5



Paulson Stadium
Eagles to put 30-game home win streak on line

Director of Admissions pleased despite small Fall Visitation turnout

By SANDY HANBERRY
News Editor

Last Saturday's Fall Visitation Day brought approximately 50 prospective students to GSC.

Originally slated to take place in Hanner, the day's activities were moved to the Conference Center to better accommodate the smaller than anticipated crowd.

Dale Wasson, Director of Admissions, said "The format of the program was altered to suit the environment; the response of the people was very positive."

Original plans were made for a turnout of 800-1,000 persons, but when pre-registration figures did not measure up to expectations, plans were altered to better suit the anticipated turnout. The Conference Center was selected as the site of the day's activities. The schedule of events was altered to allow visitors more free time.

President Henry was on hand to welcome GSC's prospective students and parents to GSC.

Visitors were predominantly from Georgia, but there were also

visitors from South Carolina and Florida in attendance.

Although turnout was light, Wasson's response was positive. "This is the earliest in the fall that we have ever had one of these programs. I'm pleased with the turnout, being as early as it was."

Another Fall Visitation Day is slated for Saturday, Nov. 18 and 350 persons have already pre-registered.

It is being organized through the GSC Admissions Office, as was last Saturday's visitation day.

Police Report

By CAROLYN SAMODEN
Staff Writer

Two accounts of theft were reported last week at GSC. These were:

On Oct. 6, 1989, Scott Thompson reported that someone took a radar detector from his vehicle while parked in Hanner Commuter parking lot.

On Oct. 13, 1989, Kim Harrelson reported the theft of a bicycle from Veazey Hall.

Vandalism is still prevalent

here, also. Two reports were made on:

Oct. 8, 1989, Kris Miller reported someone threw a bottle through his window at Oxford Hall.

On Oct. 11, 1989, Ashley Brewer reported someone damaged her vehicle by scratching the left quarter panel with a sharp object.

Only one accident was reported, and that was on Oct. 13, 1989. James Shumans and Timothe Jackson were involved in an accident in "D" parking lot. No major injuries were reported.

See Police, page 9

Campus Briefs

Who's Who Nominations: Today is the deadline for nominations for the 1990 edition of Who's Who Among Students in American Universities and Colleges. Any member of the faculty, staff or student body may submit nominations. Criteria for selection include: grade point average (2.80 minimum); campus leadership and service; outstanding achievement in athletics, debate, music, art, or literature; junior or senior status. Contact the Office of Special Programs in the Rosenwald Building for more details and nomination forms.

PRSSA: The GSC chapter of the Public Relations Student Society of America held their first meeting of the year last week.

Featured at the meeting were student guest speakers who discussed their summer public relations internship experiences. All four emphasized the need for computer skills, interviewing and writing experience.

The speakers and respective intern sites were Sandy Lanier, Southeastern Marketing; Chrissy Seco de Lucena, South Dekalb Mall; Jenny Hassard, Houghton Sports Medicine Hospital; and Sid Yarbrough, William R. Biggs/Gilmore Associates.

The meeting also included a new-member orientation session which will be continued at the next meeting, October 25, at 6:30 p.m. in South Building, Room 164.

"Our October 25 meeting will be the last time this year for interested

students to join. I encourage students to take advantage of this opportunity to meet professional PR practitioners and to obtain experience," said PRSSA President Shawn Sullivan.

PRSSA is a pre-professional organization which provides students with opportunities to extend their education beyond the classroom. Any PR majors wishing to join should contact Faculty Advisors Pam Bourland or Hal Fulmer (681-5138) or President Shawn Sullivan (681-6861).

Middle School Model United Nations: The sixth Middle School Model United Nations, with over 400 area middle school students scheduled to participate, opens on GSC's campus Oct. 26. The two-day United Nations simulation features students representing 167 national delegations who will debate resolutions, each representing the viewpoint of their assigned country. Interested individuals may observe the sessions of the Model U. N. General Assembly at 12:30 p.m. Oct. 27 in the Williams Center dining hall.

New Library Exhibit: The GSC Henderson Library will have a display in the Library's main entrance area featuring events surrounding GSC Homecoming 50 years ago. The display will remain during the month of November.

See Briefs, page 6



GSC history professor G. Hew Joiner has been awarded the 1989-90 Ruffin Cup. Twenty years a professor at GSC, Joiner earned his degree from Emory University and his M.A. and Ph.D. from Northwestern University. The cup was endowed by Professor Emeritus of English David Ruffin. It is presented as an annual honor to an outstanding teacher/scholar with at least 10 years of service to GSC who exemplifies the goals of the School of Arts

and Sciences and excels in teaching services to students, in scholarship, and in contributions to the spirit of the liberal arts. Joiner's name will be engraved on the Ruffin Cup, which he will retain for one year. He will receive a small replica of the cup and a \$1,000 award to enhance his teaching and scholarship through travel, equipment, or other means. Pictured are, L-R, Arts and Sciences Dean Warren Jones, Ruffin, and Joiner. (Photo: Frank Fortune)

GSC geology professor works two weeks of summer for \$1

By SANDY HANBERRY
News Editor
GSC Paleontologist Gale Bishop combined efforts and expertise for two weeks this summer with Austin Williams of the Smithsonian Institution's National Marine Fisheries Service Systematics Laboratory.

The purpose of this joining of efforts was to benefit the South Dakota School of Mines. "The thousands of fossils stored and studied in the geology labs and museum at GSC and other colleges and universities "didn't simply appear there overnight", said Bishop. "They got

there with a lot of hard work and a great deal of cooperation and good will".

Bishop and Williams showed a great deal of good will by working those two weeks for the token sum of one dollar. Together they collected and sorted some 2,000 fossil

crabs, lobsters, and shrimp before donating them to the the Museum of Geology at the South Dakota School of Mines and Technology.

Once curated, the fossils, collected from excavation sites near the town of Moberg and from the Heart Tail Ranch, will constitute one of the world's largest single accumulations of fossil cretaceous decapod crustaceans.

Bishop, who came to GSC in 1971, has been on expeditions to South Dakota nearly every year for the last twenty-five years. "This was a way for us to repay the people of South Dakota for their support and hospitality during the projects we've done over the past two decades," he said.

The two scientists, who normally work with grant support in the thousands of dollars for such an expedition, worked fourteen days in South Dakota at their own expense. During the expedition they unearthed numerous fossils of cretaceous sea life from ninety to seventy million years in age. "During the Cretaceous, South Dakota was sea bottom. A shallow seaway ran from what is now the Gulf of Mexico up to the arctic" he said.

During the course of the expedition Bishop discovered a new species of crab. Said Bishop of his discovery, "it is nothing unusual to discover a new Taxa in the rocks. However, it is exciting."

Bishop usually discovers one or two new species of fossils each year. His most recent discovery, which has not yet been named, is approximately 77 million years old and was found on a site from which fossil

Bishop plans to return to South Dakota this summer, taking a class of GSC students. "During the five hour course," said Bishop, "stu-

dents will be given the opportunity to collect crab, dinosaur, and other fossil remains."



Smithsonian Paleontologist Austin Williams, who worked with GSC professor Gale Bishop

for two weeks in South Dakota collecting fossils 70-90 million years in age.

Miscellany wants your material!

By MELISSA LUKEHART
Guest Contributor

I know something you don't know, but I just can't keep a secret. Lean close, and I'll whisper in your ear. Listen—it's Miscellany, GSC's student literary magazine. It's been a well-kept secret, but now it's the time the Miscellany hit the scene. It's where you can show off, and where you can say what you've needed to say all these years. At the same time, you can see what the other students are thinking.

If you write stories or poetry, this is the place for it. If you draw or sculpt, take the time to show everyone what you can do. If you have a couple of songs tucked away that you never thought would see the light of day, send them to the Miscellany. If you have written an especially good critical essay on a work of art or literature, drop it off in the

Williams Center, Room 105. Even if you're not currently in an English course, the Miscellany has room for you in the expository essay category if you have a well-written, insightful essay for the judges. If you've always wanted to write a theatrical vignette, now's the time.

Do you know your way around a foreign language? If you do, show us with a poem or short story in another language. Do you take photographs that touch or jolt everyone who sees them? Show everyone on campus in the 1990 Miscellany.

There is still a great deal of time before the March 1 deadline, so don't miss your chance to mark your place in the 1990 Miscellany.

Even if the limit of your artistic talent is stick figures, off-key shower-singing, or "See Spot run," there's still a reason for you to pay

close attention to the Miscellany. It captures the spirit of the year and

the decade with creations straight from the student body. Your friends and classmates are the ones making the statements. You owe it to yourself to listen to what they are saying.

You'll see our signs everywhere on campus—the racing blocks are hard to miss. If you can't wait to find out what it's all about, call Ira Dove, the editor, or Melissa Lukehart, the associate editor, at 681-0069. If you want to see what we do, come to the Foy Gallery on Monday, Oct. 23, and see what the best of Miscellany is all about.

Above all, don't wait until it's too late. Get into the act and get into the Miscellany. It's a new time for GSC, a new time for Miscellany, and it's time for you.

ice, not a combat service."

Selectivity does not measure academic quality, merely the odds against an applicant being accepted. It's a rating that fluctuates with a school's popularity among high school seniors.

Connecticut College, coincidentally also in New London, Conn., also joins the choosiest list for the first time. So do Colby College and Bates College in Maine and Occidental College in Los Angeles.

Dropping from the list this year are New York's Hamilton and Barnard colleges, Oberlin College in

collections had been taken in each of the last fifteen years.

Although his discoveries are not as significant as some archaeological finds, "they do add to the general body of knowledge" and more importantly aid in understanding the ancestral relationships of modern creatures and in answering questions about biological and geological changes that have occurred in the past.

Said Bishop of the expedition, "I enjoy collecting and research through it, and if I can help another institution and other people then it was worth doing."

Bien Venidos to *El Sombrero*

Buy 1 Lunch Get 1 Free
Valid Monday-Thursday
11am-2:30pm
1 coupon per party

Come try our Mexican Beverages

Our Newest Location No. 4 406 Fair Road, Statesboro Junction 764-9828

\$1 ONE DOLLAR OFF \$1

\$ 1.00 Off With Coupon

•Go Carts •Putt-Putt •Skateboards

GO FOR IT

Highway 24 at Beasley Rd. 764-6834
(past Statesboro High School)

Hear ye Hear ye. The Classifieds are free.

25 Words or Less for Students and Faculty.

Umdrum Box 8001

U.S. Coast Guard Academy nation's choosiest college

By PAT ORDOVENSKY
©Copyright 1989, USA TODAY/Apple College Information Network

The U.S. Coast Guard Academy has replaced its big brothers as the nation's choosiest college.

The 921-student academy in New London, Conn., accepted only 9 percent of its applicants this year to rise to the top of Gannett News Service's annual list of most selective schools.

It's an honor that rotated for the past three years between the U.S. Naval Academy in Annapolis, Md., and the Military Academy in West Point, N.Y.

The 1989 Choosiest College list grows to 52 schools, up one from last year. To make it, a college must accept fewer than half its applicants and have a freshman average of at least 1200 on the Scholastic Aptitude Test.

The Coast Guard historically has accepted a small percentage of applicants, but its SAT average has been below 1200. The average climbed gradually, however, from 1189 four years ago to 1200.11 this year, says spokesman Norm Whitehurst.

The Coast Guard is becoming more popular, says Whitehurst, because "it's a humanitarian serv-

DOMINO'S PIZZA

NOW HIRING!

AFTER 30 MINUTES, LOUIE WAS CONVINCED THAT VINNIE WAS LYING ABOUT THE DOMINO'S PIZZA® BEING LATE.

DOMINO'S PIZZA GUARANTEE*

Service: We guarantee your pizza will arrive in 30 minutes or less from the time you order, or the driver will refund \$3.00 off your order.

Product: We guarantee satisfaction with your pizza, or call the store manager within 30 minutes after delivery for a new pizza or for a full refund.

Pizza Take-Out: We guarantee your pizza take-out order will be ready in 15 minutes or you'll receive \$3.00 off.

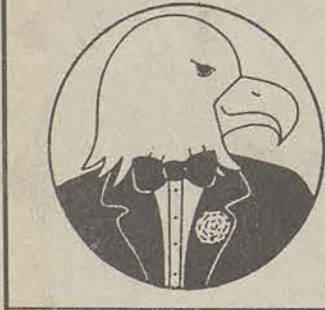
*Certain restrictions apply. Call store for details.

CALL US!

Serving Georgia Southern:
681-4326
College Plaza

Nobody Delivers Better™

CLEAN EAGLE COIN LAUNDRY & CARWASH



- Complete Vending Center
- Drinks & Snacks
- Soap Dispenser
- Laundry Bag
- Soft Water
- Waiting Area with TV
- Pay Telephone
- Video Games
- Wash & Wax
- Foaming Brush
- Car Aides Vendor
- Self-Service Car Wash

New Coin Changer for \$1, \$5, \$10, and \$20

Coming Soon - Drop Off Laundry Service

230 Lanier Road Statesboro Square

Drivers are never penalized for late deliveries! Limited delivery areas designed with safety in mind. Our drivers carry less than \$20. ©1989 Domino's Pizza, Inc.

<p>DOMINO'S PIZZA</p> <p>10" DOUBLES \$6.99!</p> <p>Just call and order TWO 10" cheese pizzas (pan or original, or one of each) and you pay only \$6.99! Each additional topping just \$1.30 covers both pizzas. (Tax not included.)</p> <p>No Coupon Necessary.</p> <p>Good Thru 10/25/89</p> <p>Drivers are never penalized for late deliveries! Limited delivery areas designed with safety in mind. Valid at participating stores only. Not valid with any other offer. Drivers carry less than \$20. ©1989 Domino's Pizza, Inc. GA10-10/19</p>	<p>DOMINO'S PIZZA</p> <p>14" DOUBLES \$10.99!</p> <p>Just call and order TWO 14" cheese pizzas (pan or original, or one of each) and you pay only \$10.99! Each additional topping just \$1.80 covers both pizzas. (Tax not included.)</p> <p>No Coupon Necessary.</p> <p>Good Thru 10/25/89</p> <p>Drivers are never penalized for late deliveries! Limited delivery areas designed with safety in mind. Valid at participating stores only. Not valid with any other offer. Drivers carry less than \$20. ©1989 Domino's Pizza, Inc. GA14-10/19</p>	<p>DOMINO'S PIZZA</p> <p>DOUBLES DOUBLES DOUBLES \$9.59!</p> <p>Just call and order TWO 10" cheese pizzas (pan or original, or one of each) with TWO toppings of your choice for only \$9.59 and receive TWO 12 oz. cans of Coca-Cola Classic® FREE! (Tax not included.)</p> <p>No Coupon Necessary.</p> <p>Good Thru 10/25/89</p> <p>Drivers are never penalized for late deliveries! Limited delivery areas designed with safety in mind. Valid at participating stores only. Not valid with any other offer. Drivers carry less than \$20. ©1989 Domino's Pizza, Inc. GA99-10/19</p>
---	---	---

This Week's Announcements

GSC has been invited to participate in the International Studies Association's (ISA) scholarship program for their 1990 SUMMER VACATION ABROAD.

The languages included in the program are French, German, Italian, Spanish, and English.

Additional information about the program is available in the GSC International Studies Program office in Room 4 of the Political Science Building.

The sixth Middle School Model UN will be held at the Southern Center for Continuing Education on October 26 and 27.

Interested individuals may observe the General Assembly session in the Williams Center Dining Hall on October 27 at 12:30 p.m.

An Art Teachers' Evening will be held at the Atlanta College of Art Wednesday, November 15, from 5:30-8 p.m.

The Memorial Arts Building in the Woodruff Arts Center, 1280 Peachtree Street NE.

Last Christmas, the Mail Call program brought smiles to more than 125,000 of the US' servicemen and women.

For information about taking part in the program, send your name and address along with a first-class postage stamp.

Entrants in the Music City Song Festival will compete for over \$250,000 in cash and prizes from MCSF exclusive sponsors.

Music City Song Festival's free, educational SoundMakers magazine will be published in November.

To be added to MCSF's mailing list for entry information and the magazine, send name and address to: MCSF, PO Box 17999-J, Nashville, TN 37217 or call (615) 834-...

Pulling Strings the Right Way

By MELANIE ROBINSON Staff Writer

The Puppet Theatre has been functioning around GSC's campus for over two decades.

Located on Highway 301 next to the Skate-R-Bowl, the Puppet Theatre has a stock of puppets worth more than \$10,000.

Puppetry is one of the oldest arts and has been in existence since before the time of Christ.

Operated by the GSC Puppetry Guild, the theater is a student organization designed to provide opportunities for students to work in the area of puppetry.

Students may feel that this opportunity is reserved strictly for theater majors, but they are wrong.

The Puppetry Guild is open to all students who wish to share in the experience, either for fun, for the art, or to prepare for careers in puppetry, education or recreation.

Credit can be earned through puppetry courses, independent study, and puppetry practicum.

Students would be assisting in puppet construction, which would entail sewing, sculpting, and bringing the puppets to life.

The theater has been allotted a \$1,000 budget to work with for the 1989-90 school year, but that is the most money the organization has ever been given.

thousands of dollars to replace all of them. Time, effort, creativity and precision go into the construction of the hundreds of puppets used in the theater.

In the past, the theater has performed for nursing home residents, members of Alcoholics Anonymous, the Youth Arts Festival, the Bite of the 'Boro, and public schools.

The group's first project this year will be "A Charlie Brown Christmas." The show is scheduled for Friday, Dec. 1.

By providing students with valuable experience in the art of puppetry and serving as an entertainment outlet for all members of the community, the Puppet Theatre is one of GSC's finest assets.

Reel to Reel Film Reviews by Bill Johnson

By BILL JOHNSON, Staff Writer Halloween 6

Eleven years ago a small film company produced a low budget horror classic called Halloween.

Halloween V, The Revenge of Michael Myers, is a scare-filled fun fest, enjoyable for groups of people who delight in yelling at the screen.

The plot continues where the fourth left off in which the maniac, Michael Myers, escapes from a flaming death.

Next we are introduced to his sister's daughter, who he was trying to kill in Halloween IV.

The movie proceeds in a generic horror film manner to introduce characters and kill them off in nasty ways.

only comes out on Halloween.

The manner in which he moves is unique in horror villains also. He never speaks, which saves us from the stupidity of a Freddy Krueger babble, and he always walks instead of runs.

Johnny Handsome

The other film now showing at the College Cinemas is Johnny Handsome, a slam-bang, shoot-'em-up action movie.

Mickey Rourke stars as Johnny, a deformed man who has only one friend and lives a life of crime.

When Johnny and his friend pull a heist with two strangers, the strangers kill Johnny's friend, and set him up to take the fall.

attempts to correct Johnny's deformity.

It is the doctor's theory that when Johnny looks normal, he will no longer turn to crime.

A big-city sheriff is not satisfied with Johnny's transformation and feels that he will attempt to avenge the death of his friend.

Johnny tries to stay on the right path for a while, but his hatred for Rafe demands a confrontation.

The movie is very moody overall. Mickey Rourke is superb as the tormented Johnny.

The supporting cast is excellent, with Morgan Freeman as the sheriff and Ellen Barkin as one of the strangers.

This is not a perfect movie, but it should satisfy anyone's goal for an action film and a revenge drama.

Music Corner: Country & Progressive

By ELIZABETH TILLEY Staff Writer

October is a month of change. The green leaves fade into glorious reds and golds, pumpkins are harvested, and hay is cut and bound.

Country music carries with it parts of gospel, pop-rock, and a bit of the blues.

The sound of country music has also changed in the last few years. No longer is it full of twangy guitars and banjos.

"I'm just carrying on an old family tradition"

Country music carries with it parts of gospel, pop-rock, and a bit of the blues.

Thanks to artists like Alabama, George Strait, Randy Travis, and of course Hank Williams, Jr., the sound of country is being spread throughout the United States.

If you were as fortunate as I and "grew up on country sunshine," then, at some point, you have come into contact with these sounds.

As a child, I was exposed to music of all types. Perhaps that is one of the reasons I am so spacey at times.

If you find yourself with nothing pressing to do on a "Southern Sunday" and feel like "killin' time," just turn your radio dial to WCHY (94-FM) or any of the other local country stations and give it a try.

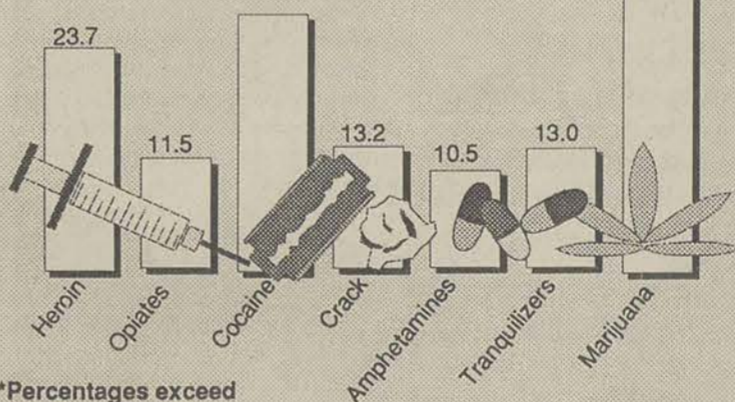
Since "I'm no stranger to the rain," I can assure you that you might be pleasantly surprised.

If it is to your liking and you do not want your friends to know you joined a "country club," that is okay.

Hope to see you "down in the boondocks," which happens to be a "diamond in the middle of a field full of stones."

Name your poison

These are the drugs used by outpatients at treatment centers across the nation (percent)



*Percentages exceed 100% because of multiple drug use. Source: National Drug Abuse Treatment System Survey, 1988. University of Michigan

Matthew Copeland, Gannett News Service

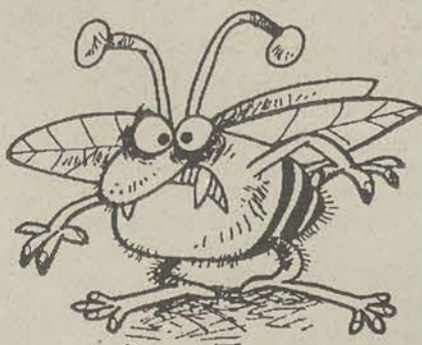
The Best of... MISCELLANY

You're Invited to An Exclusive Evening of the Arts

Literary Readings, Music, Food, and Entertainment.

Foy Gallery 303 7:00 PM October 23, 1989

Don't get BUGGED! Write a letter to your editor.



MEISEL GRAPHICS 58 East Main • Statesboro • 489-8843

ATTENTION: Faculty & Staff

A team of consultants who are developing the Campus Facilities Master Plan will conduct important information gathering sessions on Oct. 23-27 in Room 111, F. I. Williams Center.

Two open 1-hour sessions have been set aside with the consultants on Oct. 24 at 9 a.m. and 5 p.m.

You have an opportunity to meet at either of these times to provide input regarding this important preparation for the future physical development of the campus.

For more information: Office of Facilities Planning and Space Utilization 681-5237

CAB Presents: MAJOR LEAGUE

OCT. 20 8 & 10 P.M. OCT. 22 2 & 9:30 P.M.

Biology Lecture Hall \$1.00

When three oddballs try to play baseball, the result is totally screwball.

Major League A comedy with bats and balls



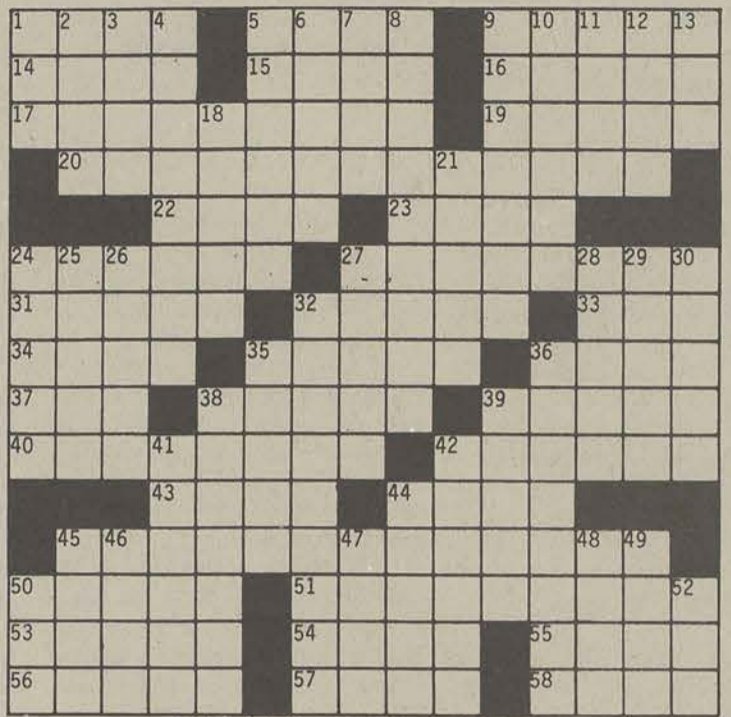
Mother Goose & Grimm

by Mike Peters



collegiate crossword

- ACROSS
1 Lacking stiffness
5 "Perry Mason" actress
9 Miss Gable
14 Matinee
15 Kind of exam
16 soup
17 Eclectic
19 Type of fish
20 Simultaneously (4 wds.)
22 Prison place
23 Departure
24 Barber shop items
27 Technique developed by Freud
31 Sorrow
32 Blackjack command (2 wds.)
33 Chemical suffix
34 Beverly Hills' forte
35 Houses in Seville
36 Dash
37 Author's outputs (abbr.)
38 Musical maneuver
39 Heavy hammers
40 Door opening
42 Hit the
43 God of Love
44 "Damn it"
45 remark
50 Shinbone
51 Having no more space (3 wds.)
53 Distribute
54 No. in Nuremberg
55 Aware of
56 Orchestra section
57 Head inventory
58 Hae



© Edward Julius Collegiate CW84-1

- DOWN
1 Fleur-de-
2 Concept
3 Shed
4 Excess
5 Vacation places
6 Ascend
7 Molten rock
8 Basic
9 Antagonistic
10 Antagonism
11 Per
12 Deal out
13 Opposite of syn.
18 Tennis strokes
21 College events
24 Act
25 Concise
26 Poker bet
27 Path
28 Word said during a toast
29 Together (2 wds.)
30 Common
32 Piece of precipitation
35 Perform like Crosby
36 Suffers humiliation (2 wds.)
38 Warnings of trouble
39 Recurrent theme
41 Sentence part
42 Orchestra leaders
44 Fasten again
45 Accumulation
46 Competent
47 Mr. Long
48 First-class
49 Plenty
50 Seaman
52 Bon

See Puzzle solution below

The George-Anne CLASSIFIED

The George-Anne provides free classified listings to students faculty and staff members of Georgia Southern College as a campus-community service.

AKC GOLDEN RETRIEVER puppies, born 7-1-89. One female, three males. All booster shots to date, dewormed, great personalities.

MARKET DISCOVER CREDIT CARDS ON CAMPUS. Flexible hours. Earn as much as \$10 and hour. Only ten positions available.

PERSONALS
LAURABA AND CINDELLS, Good guy, I love ya'll. ME!!!!
STADIUM WALK #49- Doya'll ever sleep or study???? DAD.

Briefs continued from page 1

Zeta Tau Alpha Pledges: The Zeta Xi Chapter of Zeta Tau Alpha pledged in 68 new girls on September 20. The new pledges are: Christi Ambrose, Kristin Askin, Julie Barrow, Susan Benton, Ashley Boatwright, Gina Bonacci, Diane Bone, Kali Cajoleas, Suzanne Chappell, Dana Collins, Laura Dent, Leslie DuBose, Tanya Emerson, Stacie Faulk, Mindy Faulkner.

ROOMMATES
FEMALE ROOMMATE NEEDED. Stadium Walk, furnished apt. Price negotiable. Call 681-4169 for more information.

LOST AND FOUND
LOST ID BRACELET with the name "Jean" on it. Sentimental Value. Reward offered. If found, please call Jean 681-6895 rm 110.

EARN \$\$\$\$\$\$
Need money for a new car? Or just to make life a little easier? The United States Navy Nuclear Engineering Program Can Make it possible.

Late News
JUPITER-BOUND PROBE LAUNCHED: Space shuttle Atlantis and its nuclear-powered Galileo spacecraft was launched Wednesday from Cape Canaveral, Fla.

Announcements continued from page 3

0027 between 9 a.m. and 5 p.m. Central Time.
The Christian rock band Petra will perform at the Atlanta Civic Center November 11 at 7:30 pm. The group's current tour is in support of its eleventh album On Fire.

FOR SALE
PLUSH VELOUR LOVESEAT. \$50 and in good condition. Call 489-8855.

NOTICES
ATTENTION! We will clean your apt. and do laundry. Reasonable rates. Call Mari and Karen 681-6593.

AUTOS FOR SALE
TOYOTA COROLLA STATION WAGON for sale. Call 764-7272.

Puzzle solution from above
LIMP HALE HEDDA
TIDOL ORAL ONION
SELECTIVE SMELT
AT THE SAMETIME

Police continued from page 1

The GSC campus police had an uneventful weekend. No major "crimes" were reported nor were any accidents written up.

Southern continued from page 5

and Parent's Day all day long. For those interested in watching the event, the best view will be from the start/finish line, located directly behind the new weight room.

Stupac continued from page 5

better competitions and the fans would get to see exciting games. Plus, teams like BYU in 1984, couldn't sneak away with the national championship. Of course, if we had a national playoff system....

Guard continued from page 2

Ohio and the University of Michigan.
Harvard & Radcliffe is still the most selective private school, accepting 16.7 percent, up from 15.2. Princeton, Stanford, Yale and Cooper Union in New York are the only others taking fewer than 20 percent of their applicants.