

# The George-Anne

October 11, 2006

Follow this and additional works at: <https://digitalcommons.georgiasouthern.edu/george-anne>



Part of the [Higher Education Commons](#)

---

## Recommended Citation

"The George-Anne" (2006). *The George-Anne*. 2037.  
<https://digitalcommons.georgiasouthern.edu/george-anne/2037>

This newspaper is brought to you for free and open access by the Student Media at Digital Commons@Georgia Southern. It has been accepted for inclusion in The George-Anne by an authorized administrator of Digital Commons@Georgia Southern. For more information, please contact [digitalcommons@georgiasouthern.edu](mailto:digitalcommons@georgiasouthern.edu).

High: 84 | Low: 62  
Sun and clouds  
Volume 79  
Number 44

## Soccer scores high

Men's soccer scored their sixth shutdown of the season against Wofford | SPORTS p. 6



## Columnist warns of the killer addiction: video games

| OPINION, p. 4

# THE GEORGE-ANNE

DAILY

WEDNESDAY, OCTOBER 11, 2006

# Time capsule arrives before its time

## GSU 1990 time capsule moved for construction

By Jerriod Grizzle  
Staff writer

It stands as a great grey monument to Georgia Southern, shaped like a coffin with the sides worn and the top bowed out, these slight imperfections give it character, symbolize its past, present and ultimately, its future.

Late Tuesday, Pope Construction, the contracting company in charge of remodeling Henderson Library had to dig up the university time capsule to make way for the second phase of the library renovation.

Brooks Blumenthal, a Project Manager for McKnight construc-

tion, and GSU alumnus said he was asked to move the capsule to prevent damage to the 15-year-old monument.

"We were asked to relocate it, and to keep it in a safe place," he said.

Blumenthal said for the time being he is going to keep it as safe as possible and that includes not telling where it is going to be placed for the time being.

The capsule has been in front of the library for 16 years under its 'Georgia Southern Marker' plaque. The capsule was buried October 15, 1990 to honor GSC's transition to full status as a university.



Rachel McDaniel/STAFF

Brooks Blumenthal carefully removed the GSC time capsule from its resting place. Because of the library construction, set to be complete in 2008, the capsule needs to be reburied in a safer location until 2040.

see TIME, page 2

Time capsules are used for all kinds of events:

Newborn babies:



Weddings:



City/town celebrations



Special Photos (Above)

Some of the types of items the 1990 time capsule contained:

Diplomas donated by GSU professors



A GSU mascot uniform from the 30s



A bottle of 'lucky water' from Eagle Creek



A GSU pride banner



File Photos (Left)

# Credit: your best friend or worst enemy?

Some common ways to get into - or stay out of - trouble easily:

**NO:** Choose a card with a fee, high interest rates or poor customer service.

**YES:** Shop around for a credit card that's right for you. For example, if you pay off your balances at the end of each month, you may benefit from a rewards card with a reasonable annual fee.

**NO:** Make your payments a day late. The fastest way to lower your credit score is to make late payments on your credit accounts. Late payment fees add up very quickly.

**YES:** It's important to come up with a system of paying your bills so that all payments are received on or ahead of time. Don't forget that your payment must actually reach your creditor by the due date.

**NO:** Pay only the minimum payment. It's a common mistake to think you're doing okay as long as you're making the minimum payment.

**YES:** Focus on trying to spend only what you can pay off at the end of the billing period. It'll help your credit score and keep you from having to pay all those high interest rates.

**NO:** Spend today; worry about how to pay it off tomorrow. The convenience of buying now and paying later sometimes gets the better of us.

**YES:** If you're not sure if you can afford something, don't charge it onto your credit card. Instead, try to use cash as much as possible for everyday purchases, to make you more aware of just how much you're spending.



Juan Garcia/MCT

Betty Parker of Consumer Credit Counseling Service of North Central Texas is surrounded by cut up credit cards from clients she has worked with.

## College students prime targets for credit card scams and theft

By Lauren Childs  
Staff writer

Local restaurants have been enticing students with coupons for free food, only to find out that in order to get the free food, students must first fill out a credit card application.

This is just one of the many credit card scams that college students encounter. Ever notice that as soon as you graduated high school, or maybe even before, that your mailbox began overflowing with credit card applications? This is where it all begins.

Many students get to college with their new found independence and get bombarded with "pre-approved" credit card applications. That "pre-approved" credit card could end up being a problem if you are not careful.

"We always tell students, if you are going to use a credit card, be sure you can pay it off," said Financial Aid Counselor, Misty Harvey. "Don't just pay the minimum amount and always pay on time so you don't get stuck with fees."

It is also a good idea to have a spending plan or budget. "It's good to have a credit card for emergencies, but don't go beyond your means," said Harvey. "Just because you want that big screen TV doesn't mean you

should go out and buy it."

One major problem associated with credit cards is identity theft. Identity theft occurs when someone uses someone else's personal information, such as a credit number or a social security number, to assume that person's identity to make transactions or purchases.

With this information the thief can do a number of things including open new bank accounts, purchase cars and apply for loans.

Many bank Web sites offer a lot of information about identity theft. BB&T lists some ways that personal information can be stolen.

Aside from the obvious theft of your purse, wallet or checkbook, there are many methods that thieves use such as removing mail from mailboxes, going through trash, hacking into computers and phishing, which involves using email scams or fraudulent websites.

In turn, there are also many ways for people to protect themselves against identity theft. Giving out personal and financial information over the phone is a big no-no, as is routinely carrying important documents such as social security cards, passports or

see CREDIT, page 2

# Wendy's

## 99¢ Crispy Chicken Sandwich



### CLINICAL TRIALS

AT THE  
MEDICAL COLLEGE OF GEORGIA

## Women Helping Women

### The Herpevac Trial for Women: A Herpes Vaccine Study

For women age 18-30 without oral or genital herpes

This study of an experimental vaccine might protect women against herpes.

Participants receive:

- Free screening for herpes
- An investigational vaccine against herpes or hepatitis A
- Financial compensation for time and travel

For more information, contact:

Medical College of Georgia  
706-721-2535  
877-643-1414 (toll-free)  
womens\_health@mcg.edu  
www.herpevaccine.nih.gov

GSU study participants  
will be seen at the GSU  
Health Center

This vaccine CANNOT give you herpes.

# Alum receives grant



Special photo

GSU alum Ella McAfee (right) and her mother, Tommie Evans, at the Georgia Power awards banquet on Sept. 20 in Atlanta. McAfee received the \$1000 New Teacher Assistance Grant.

By Avina Darmadjaja

Staff writer

Georgia Southern's alumna Ella (Evans) McAfee has received one of fifteen New Teacher Assistance Grants awarded by Georgia Power for 2006-2007.

These \$1000 grants are awarded to graduates of Georgia's public four-year colleges and universities with a state-approved teacher education program who are in their first year of teaching.

McAfee graduated from GSU in May 2006 with a B.S. Ed in chemistry education and is currently a first year teacher at Screven County High School in Sylvania.

She teaches 9th grade physical science and 11th grade chemistry.

Upon receiving the grant she said, "I am so excited because teachers, especially first-year teachers like I am, always need money to purchase

supplies beyond those provided by the schools."

She plans to use the \$1000 to buy a classroom set of calculators and a laptop.

Candidates for the grants must have been in the top 25 percent of their class, demonstrate an aptitude for teaching and be recommended by education faculty members.

"Ella was an outstanding student who loves science and really wants her students to love and enjoy it as much as she does," said Missy Bennett, Secondary Education coordinator who recommended McAfee for the grant. "She's a fine young woman and if we can clone Ella, the world will surely be a better place."

McAfee does not feel the need to make science even more intimidating for students. Instead, she always tries to make it more simple and accessible.

McAfee spent her first two years of college at UGA before she transferred

to GSU to finish up her degree.

"She definitely has the ability and the right attitude, not to mention the high GPA, to choose any road in life and be successful in it," said Bennett.

"The fact that she chose this particular path speaks volumes about her passion for science education."

McAfee's love of science might actually be genetic as both her mother and grandmother were science teachers.

During her years in GSU, she gained experience by being a student teacher at Swainsboro High School.

"I had to drive an hour and fifteen minutes to get there," she said. "But in the end, it was definitely worth it."

She was also a long time substitute teacher for Screven County High School before she got hired permanently.

McAfee and 14 other recipients were honored at an awards luncheon on Sept. 30, at Georgia Power's corporate headquarters in Atlanta.

## CALENDAR

Wednesday, October 11

12 p.m. - 6 p.m.  
Red Cross Blood Drive  
Russell Union Ballroom

2 p.m. - 3:30 p.m.  
FYE focus group  
Russell Union 2075

3:30 p.m. - 5 p.m.  
International Festt Committee  
Russell Union 2054

3:30 p.m. - 5 p.m.  
Drag show auditions  
Russell Union 2048

4 p.m. - 5 p.m.  
Global Village meeting  
Russell Union 2052

5 p.m. - 7 p.m.  
Jeff Beekman & Marsha Lott  
Foy Fine Arts Building

5 p.m. - 9 p.m.  
Video Gamers Alliance  
Russell Union 2080

7 p.m.  
Salsa dance  
Russell Union Ballroom

7 p.m. - 9 p.m.  
Anime crew meeting  
Russell Union 2044

9 p.m. - 11 p.m.  
Doo Dah meeting  
Russell Union 2048

Thursday, October 12

5 p.m. - 6 p.m.  
International club meeting  
Russell Union 2084

6 p.m. - 7:30 p.m.  
African Student Association  
Russell Union 2044

7 p.m. - 9 p.m.  
Debate team meeting  
Russell Union 2075

7 p.m. - 9 p.m.  
Poetry troupe  
Russell Union 2071

7:30 p.m. - 8:30 p.m.  
SAI Benefit Concert  
Carter Recital Hall

Friday, October 13

7 a.m. - 11 p.m.  
Family Weekend

11:30 a.m. - 1:30 p.m.  
Conversation Hour  
Russell Union Ballroom

7 p.m. - 9 p.m.  
Dessert Reception  
Russell Union Ballroom

Saturday, October 14

7 a.m. - 2 p.m.  
SAT Test  
Russell Union Theatre

10 p.m. - 12 p.m.  
We Can Achieve  
Miller Grove Baptist Church

10 p.m.  
Glow: Diversity Dance  
Williams Center Dining Hall

## POLICE BEAT

10-9-2006

• Barbara Maharrey, was charged with possession of a controlled substance

• Wayne Hand, was charged with possession of a controlled substance

• George Murray, was charged with distributing a controlled substance (crack cocaine)

• Several articles of clothing were taken from the Southern Pine laundry room

10-10-2006

• Kevan Glenn Patterson, 18, of Brannen Hall, was charged with DUI, reckless driving, and possession of alcohol by a person under 21 years of age while operating a vehicle

# GSU Idol



Monday October 16, 2006

7 pm

Russell Union Ballroom

Tickets:

\$3 in advance

\$5 at the door

## Balance transfers

Transferring balances from high-rate credit cards to one with a fixed low rate until the balance is paid sounds good, but has risks.

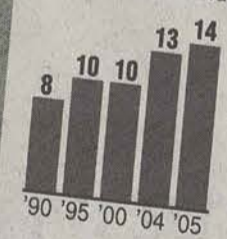
► **Transaction fees:** Most card companies charge a flat fee, typically 3 percent of the balance transferred, capped at \$75

► **Purchase requirements:** Some card companies require that you charge a minimum amount in new purchases at a higher rate to keep the low transfer rate

► **Late payment penalties:** Many card companies will raise the rate steeply if you make one late payment; if the card has a "universal default clause," the rate may be raised if you miss a payment on other cards or loans; read the fine print carefully

## Personal Finance

The numbers  
Average number of credit cards per U.S. household



© 2006 MCT  
Source: Bankrate.com, Card Web  
Graphic: Pat Carr

## Credit

from page 1

birth certificates.

It's a good idea to retrieve your incoming mail as soon as possible and shred financial documents such as credit card bills and bank statements before throwing them away.

Harvey said that students don't look at debt in the long term. "Most average students out of college, have around \$16,000 to \$17,000 of debt

just in loans, not to mention credit card debt." As long as students are responsible with their money, it's okay to have a credit card. It's just important to watch what you put on it, and check if someone else has put something on it.

"As of October 1, GSU no longer accepts credit cards as payment on the student account," said Debbie Powell of the Bursar's Office. "Payments are made to a third party, TouchNet, who collects the payments on behalf of the University."

## Time

from page 1

The capsule holds some interesting items, including the "University, Yes!" edition of the Statesboro Herald, a T-shirt, a banner, part of the goal post from the '89 championship, a bottle of "lucky water" from historic Eagle Creek, and a few diplomas donated by teachers and other alumni.

The capsule also includes the GSC eagle mascot uniform worn in the 1930s.

Although the capsule was dug up to protect it from damage, the capsule will still not be opened until its scheduled debut in 2040.

When it's possible to move the capsule back to a permanent location

to wait for 2040, Blumenthal said it will be buried 50 feet away from its original location in front of the new opening to the library under the same marker as before.

Blumenthal said that the construction on the library should be finished by 2008, so the capsule will likely be reburied then.

Associate Library Dean, Ann Hamilton said that the reburial will be done with a small ceremony to re-comemorate the capsule.

The GSC time capsule is not the only part of GSU history that has been moved in the wake of the library reconstruction.

Both the Phi Kappa Phi key, the Irish monument, and the Hanner Gym monument have also been moved to protect them while construction is completed.

INTERNATIONAL POLITICS

# Critics say U.S. is now paying the price

Chicago Tribune

For years, the Clinton administration attempted to negotiate directly with North Korea to avert the development of nuclear weaponry on the volatile peninsula.

For the last three years, the Bush administration has attempted to negotiate through an alliance of Asian nations, with President Bush refusing to negotiate directly with the regime of Kim Jong Il since talks broke down

over enrichment of nuclear fuel.

Now, with the apparent testing of an underground nuclear device in North Korea, it has become dramatically clear that neither tactic worked.

Critics contend that the United States now is paying the price for not paying closer attention to North Korea's nuclear ambitions over three decades — with the challenge of dissuading a hostile regime from developing a nuclear weapons program now

turning to the far more difficult task of containing a nuclear arsenal that already exists.

"It suggests that we're in for a rough go here," said Henry Sokolski, executive director of the Nonproliferation Policy Education Center and a former Defense Department specialist in nuclear nonproliferation in President George H.W. Bush's administration.

"This isn't the worst. This is the beginning of the worst," Sokolski said. "The world is watching how we are

going to deal with North Korea."

Since 2003, the United States has hoped that the so-called Six Party Talks with North Korea — involving China, Russia, Japan, South Korea and the U.S. — would avert the development of nuclear weaponry, which Bush has termed "unacceptable." The U.S. has particularly counted on China's perceived ability to influence the North Koreans.

Talks broke off last fall after North Korea refused to return to the table.

NEWS OF THE WEIRD

From Universal Press Syndicate

Compelling explanations

• Leon Howard Matter was arrested in Sandusky, Ohio, in August for sending a letter containing "anthrax" (though it turned out to be harmless powder) to the local FBI office. He told agents the reason he did it was because he was facing earlier child pornography charges and didn't want to go to prison for that because he'd get beaten up. Threatening the FBI, he reasoned, has a better cachet.

• After police found 638 marijuana plants in a Hastings, England, warehouse rented by David Churchward in September, he said he was forced to grow the plants (which would make more than 280,000 marijuana cigarettes) to help his wife, because she has difficulty sleeping.

### U.S. troops in Asia

U.S. troops deployed overseas total 370,000; more than 80,000 are based in Asia:

**U.S. 7th Fleet**  
Part of Pacific Fleet based at Yokosuka  
■ Established 1948  
■ Total number of military personnel: 13,010  
■ Operates 17 ships, 100 aircraft

**Japanese headquarters**  
Yokota Air Base  
■ Established 1957  
■ Total number of military personnel: 36,860

**South Korean headquarters**  
Yongsan Army Garrison  
■ Established 1954  
■ Total number of military personnel: 36,630

Army	27,500	Army	1,680
Marine Corps	130	Marine Corps	15,150
Navy	300	Navy	5,680
Air Force	8,700	Air Force	14,350

© 2006 MCT  
Source: U.S. Forces (Japan), "Military Balance," U.S. 7th Fleet  
Graphic: Elsebeth Nielsen, Morten Lyhne

**KYOTO FANTASY EXPRESS**  
912-764-5150  
715 Northside Drive East

Now in Statesboro at Southern Square Shopping Center

**VIDEO WAREHOUSE**  
RENTING MOVIES JUST GOT EASIER!

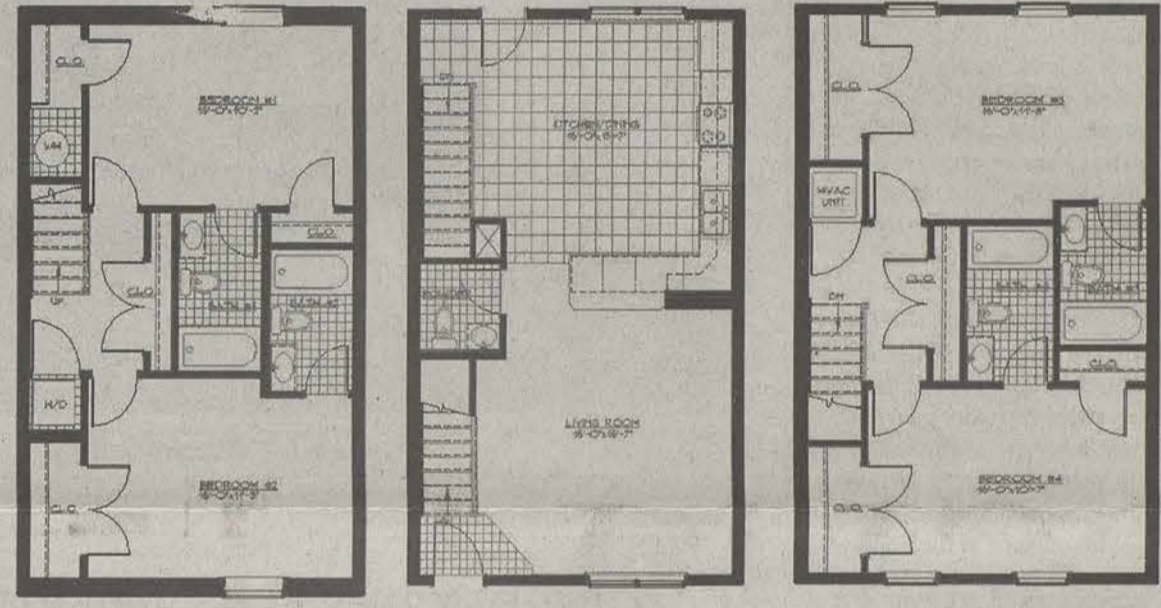
199 NORTHSIDE DRIVE  
489-4279

1200B BRAMPTON AVE  
871-7012

**Wendy's** **99¢**  
Crispy Chicken Sandwich

## Relax, At Your Own Copper Beech Front Property!

3 levels • 2,000 sq. ft.



- Amenities**
- Private bath
  - Extra guest bath
  - Walk-in closet
  - Washer/Dryer
  - Free Internet
  - Free Cable
  - Clubhouse
  - Pool
  - Fitness Room
  - Game Room
  - Units available furnished with Ashley and Basset furniture

# Copper Beech TOWNHOMES

(912) 681-8307 FAX: (912) 871-3721  
Located behind Sonny's on the Hwy. 67 By-pass  
Offices Hours - 9am-6pm, Monday - Friday  
www.CopperBeechTownhomes.com

NATIONAL POLITICS

## Declining support for GOP candidates

Chicago Tribune

Three independent polls released on Monday demonstrated the political damage that congressional Republicans and particularly House Speaker Dennis Hastert have sustained since a GOP congressman's sexually explicit electronic messages to underage pages were disclosed late last month.

Few in the country previously had strong impressions of the speaker. But about half of all Americans now say Hastert, an Illinois Republican, should resign his leadership post. Even among Republicans, more than a third believe the speaker should go, according to the CNN-Gallup poll, conducted over the weekend following Hastert's Thursday press conference.

Two of the polls, those by CNN-Gallup and ABC News-Washington Post, showed that between 52 and 64 percent of those surveyed believe party leaders deliberately tried to cover up the wrongdoing by Rep.

Mark Foley, R-Fla., who resigned last month. And three-quarters of the country consider Republican leaders' handling of the affair inappropriate, CNN-Gallup said.

While voters say such issues as the Iraq war, terrorism and the economy are more important to them than the handling of Foley's lurid electronic messages, polls show a sharp drop in public support for Republican congressional candidates.

Among likely voters, 58 percent say they plan to vote for Democrats in November, versus 37 percent who say they will vote Republican, according to the CNN-Gallup poll. The 21 percentage point margin is 5 points wider than it was a week earlier in the same poll.

The ABC-Post poll found registered voters favor Democratic over Republican candidates 54 percent to 41 percent. The 13-point margin also is 5 points wider than the last ABC-Post poll, taken a month earlier.

REGIONAL NEWS

## Students claim signs with gay pride symbols torn down

The News Herald

Two Florida State University-Panama City students are claiming that their campaign signs were torn down because the signs featured gay pride emblems.

The students, Yahira Lugo-Lugo, 29, and Melissa "Kory" Hennion, 35, are running for open spots on the student government council.

In addition to Lugo-Lugo and Hennion, seven other students are running for five open seats on the council.

"The majority of my signs had been removed and I found pieces of my signs on the ground ripped," said Lugo-Lugo. "It was very disheartening."

Lugo-Lugo's formal complaint with FSU-PC describes the incident as a hate crime.

"The only campaign signs on campus that have been altered or removed have been the signs of homosexuals," Lugo-Lugo wrote in the complaint.

"As far as my case is concerned the hate crime against both running homosexuals is still unresolved and faculty has done nothing more than laugh at us."

Both students are seeking psychology and social work degrees at the college.

Both women say that officials with the council and the college ignored their complaints.

They also say that instead of punishing the person responsible for the crime, the council decided against punishing anyone and chose to start the election process over.

Members of the Student Government Council said they investigated Hennion's and Lugo-Lugo's claims but found no evidence that supported them.

The person Hennion and Lugo-Lugo have accused of tampering with the signs has been cleared, SGC members said Monday.

STATEMENT OF OPERATIONS

The George-Anne Daily is the official student newspaper of Georgia Southern University, owned and operated by GSU students and utilizing the facilities provided by GSU. The newspaper is the oldest continuously published newspaper in Bulloch County and Statesboro, Ga. The newspaper is a designated public forum for the Georgia Southern University community. The ideas expressed herein are those of the editor or the individual authors and do not necessarily represent the views of the Student Media Advisory Board, the administration, the faculty and staff of Georgia Southern University, or the University System of Georgia. The George-Anne is published four times weekly (Monday-Tuesday-Wednesday-Thursday) during most of the academic year and six times during summers. Any questions regarding content should be directed to the editor at by phone at 912/681-5246 or fax at 912/486-7113. Readers may access the newspaper and its archives staff by visiting our web site at <http://www.gadaily.com>.

**SUPPORT**  
The G-A is funded primarily through revenue from advertisements placed in the paper and receives additional support, in part, from the Student Activities Budget Committee.

**STUDENTS BEWARE**  
The G-A screens all advertisements prior to publication. The newspaper strives to accept ads for legitimate products and services only. Students are urged to exercise caution when replying to ads — particularly those which require a credit card number, other personal information, or money in advance of the delivery of a product or service. Students are also urged to report to the newspaper any suspicious offers which they might see in an ad. Remember, if an offer seems too good to be true, it probably is.

**FREEBIE INFO**  
ALL FREE student and faculty ads to be run in the G-A must have a NAME, P.O. BOX and PHONE NUMBER. Ads will be rejected if they do not have this information. NO EXCEPTIONS.

**OFFICES, MAIL, PHONES**  
Room 2023, F. I. Williams Center, The George-Anne, P.O. Box 8001, Georgia Southern University, Statesboro, Ga. 30460. 912/681-5246 (News) or 912/681-5418 (Advertising) or 912/486-7113 (Fax); 912/681-0069 (adviser).

EMAIL DIRECTORY

Executive Editor  
[gaeditor@georgiasouthern.edu](mailto:gaeditor@georgiasouthern.edu)  
Managing Editor  
[gamed@georgiasouthern.edu](mailto:gamed@georgiasouthern.edu)  
News Editor  
[ganevsted@georgiasouthern.edu](mailto:ganevsted@georgiasouthern.edu)  
Advertising  
[ads@georgiasouthern.edu](mailto:ads@georgiasouthern.edu) or [ads1@georgiasouthern.edu](mailto:ads1@georgiasouthern.edu)

ADVERTISING

The George-Anne reserves the right to refuse any advertisement. **DISPLAY AD DEADLINE:** The deadline for reserving space and submitting advertising copy is Noon, one week prior to the intended publication date. **FOR MORE INFO,** rate cards, sample publications, contact: Lindsey Anthony, Marketing Director, ADS, (912) 681-5418, [ads@georgiasouthern.edu](mailto:ads@georgiasouthern.edu) or Bill Neville, Student Media Coordinator, (912) 681-0069, [bnவில்@georgiasouthern.edu](mailto:bnவில்@georgiasouthern.edu)

PROOFING/ERRORS/OMISSIONS:

The newspaper makes every reasonable effort to present correct and complete information in advertisements. However, the advertiser is responsible for proofing the ad upon publication and should notify the newspaper immediately in the event of an error. The newspaper is not responsible

for any errors in advertisements and its liability for adjustments is limited to the amount of space the error occupied in the ad. Further, the newspaper is not responsible for any damages caused due to an ad's omission from a particular edition and its responsibility solely is to reschedule the ad in the next regular edition at the regular advertising rates.

**CLASSIFIED ADS:** Free classified ads from students, faculty and staff must be non-commercial in nature and submitted in writing, with the name of the sender, local address, and phone number. No free ads taken via telephone — at this price we don't take dictation. One free ad per person per week. Commercial classified are available only from our online site at [www.gsuads.com](http://www.gsuads.com). The price of commercial ads is \$7 for 200 characters for line ads. Ads must be paid for using a major credit card. For classified display ads, contact [gaclass@georgiasouthern.edu](mailto:gaclass@georgiasouthern.edu)

**CIRCULATION INFORMATION:** Mail subscriptions are not available at this time. However, readers may visit our web site for free access to current and past issues. Visit [www.stp.georgiasouthern.edu](http://www.stp.georgiasouthern.edu). It is the goal of the newspaper to have its edition placed on-line within 24 hours of

publication. Breaking news will be placed on-line as warranted. The G-A is distributed free of charge on the Georgia Southern University campus through delivery sites located in campus buildings, at off-campus sites, and in residence halls.

NOTICE

Readers may pick up one free copy, and a second for a roommate or acquaintance, at distribution sites. Additional copies are 50 cents each and are available at the Williams Center. However, unauthorized removal of additional copies from a distribution site constitutes theft under Georgia law, a misdemeanor offense punishable by a fine and/or jail time. Editors will seek to have any person(s) who removes more than the authorized number of copies from distribution sites prosecuted to the full extent of the law.

NOTE

We gratefully acknowledge the theft of one of our slogans — "Liked by Many, Cussed by Some, Read by them All" — from Robert Williams of the Blackshear Times. Call Bob and he can tell you who stole it from originally. Credit for the other — "Covering Campus like A Swarm of Gnats" — goes to G-A alum Mike Mills.





