

The George-Anne

May 30, 1995

Follow this and additional works at: <https://digitalcommons.georgiasouthern.edu/george-anne>



Part of the [Higher Education Commons](#)

Recommended Citation

"The George-Anne" (1995). *The George-Anne*. 1374.
<https://digitalcommons.georgiasouthern.edu/george-anne/1374>

This newspaper is brought to you for free and open access by the Student Media at Digital Commons@Georgia Southern. It has been accepted for inclusion in The George-Anne by an authorized administrator of Digital Commons@Georgia Southern. For more information, please contact digitalcommons@georgiasouthern.edu.



Time marches on ...

This is the last edition of *The George-Anne* for the 1994-95 year.

Thanks for reading our hallowed pages!

BRIEFLY...

NCAA report on basketball program contained error

G-A Staff Reports

The institutional report detailing NCAA violations in GSU's basketball program was redrafted Tuesday due to a factual error on pages 27 and 33 in the document, said NCAA Faculty Representative Lane Van Tassel.

According to the report, basketball player Pierre McKisic was registered for classes and living in University Housing during summer quarter last year. McKisic told *The George-Anne* he was not registered for classes and claimed that he did not even stay in Statesboro over the summer.

A check with the registrar's office revealed that McKisic had not been registered for summer quarter. Van Tassel said the corrected version of the document was sitting on his desk Monday.

"We have corrected that with the NCAA," Van Tassel said. "Pierre brought it to my attention and I'll talk to the NCAA gentleman and put it in the mail in the next day or so.

"It's just a factual incorrect statement. It has no bearing on any finding in that report. We're just interested in naming all the folks we know about."

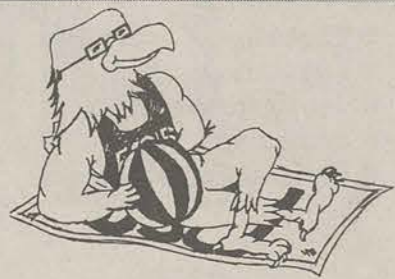
The error occurred on page 27 of the report. McKisic, who returns to this year's team as a senior forward, claimed that portion of the report was false.

WORD OF THE DAY

hypostasis (hi-pos'te-sis) *n.* 1. *Philos.* The substance, essence, or underlying reality. 2. *Theol.* a. Any of the persons of the Trinity. b. The essential person of Jesus in which his human and divine natures are united. 3. Something hypostatized. 4. a. A settling of solid particles in a fluid. b. Something that settles to the bottom of a fluid; sediment.

Source: The American Heritage College Dictionary

'BORO WEATHER



TODAY

Partly cloudy, with a high in the mid-80s and a low in the mid-60s.

WEDNESDAY

It will continue to be partly cloudy, with a high in the mid-80s and a low in the mid-60s.

INDEX

Announcements	3
Classifieds	11
Most Beautiful Students	8
Opinions	4
Police Beat	3
Sports	6
The Year in Review	9
Time Warp!	3

It is a desire of *The George-Anne* to print the news of Georgia Southern University as accurately as possible. If you feel that something covered is in error, contact a member of the editorial staff at 681-5246 as soon as possible. Thank you.

FOR ADVERTISING INFO: 681-5418
STORY OR PHOTO IDEA: 681-5246
FAX NUMBERS: 871-1357 and 681-0863
LANDRUM BOX: 8001

The George-Anne

*Liked By Many, Cussed By Some ...
Read By Them All*

The **George-Anne**

Georgia Southern University's Official Student Newspaper

Statesboro, Georgia 30460

Founded 1927

Employee files for harassment

By John Munford
Assistant News Editor

Jury selection for a GSU employee's sexual harassment trial against the Board of Regents of the University System of Georgia is scheduled to begin today.

The complaint, filed Nov. 24, 1993 in Fulton County Superior Court, claims that the Board of Regents violated the Civil Rights Act of 1964.

In the document, physical plant electrician Valerie F. Dukes alleges that she was harassed by GSU employees with "foul and abusive language, offensive touching of her private areas, pornography directed at her, and one employee constantly harassing her by asking for sex."

Dukes also charges that she was further retaliated against after she brought forth claims of the alleged harassment in September 1989. The complaint states that her job assignments have been altered, that she has been denied promotions and advanced training, benefits, or attempts have been made to deny her benefits of employment.

The document also alleges that the Board of Regents condoned the alleged harassment by not properly investigating or acting to prevent it.

The Board of Regents filed an answer and defense to the charges in Fulton County Superior Court on Jan. 19, 1994, stating a denial of all charges and requesting that Dukes' complaint be dismissed.

Dukes' attorney, Stephen B. Taylor, said he speculates the trial will take about one week, but the jury selection process could become drawn out.

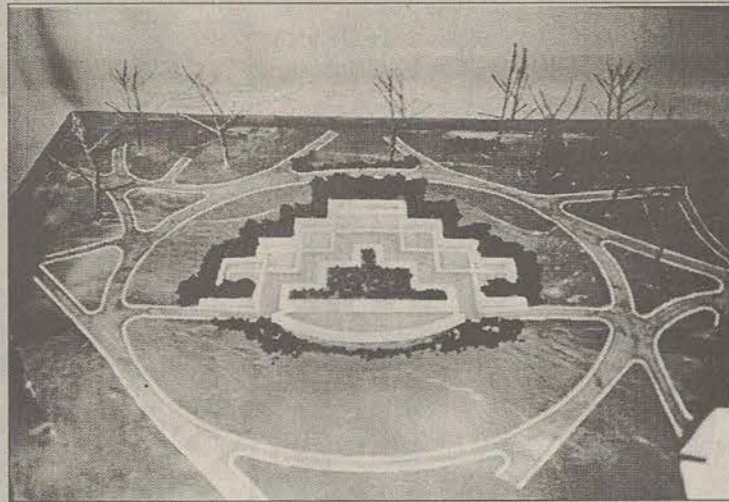
"It could be lengthy because some people have very ingrained biases — like a woman's place is in the house, barefoot and pregnant."

Taylor said he will send Dukes and anywhere from eight to ten witnesses to the stand.

"We're going to employ the technique that we have an indication of what they're going to be telling us and that it's not the truth."

"We'll try the age-old put-your-hand-on-the-Bible-and-promise-to-tell-the-whole-truth technique," he said.

Wall to honor retired faculty and staff



Chris Sherwood

The architect's version of the Honorary Wall. Planners hope to have the money raised by the end of June.

By Chris Sherwood
News Editor

Plans are in the works for an Honorary Wall for members of the GSU faculty and staff who have retired after giving at least 10 years of service to the school.

"The idea was generated from a faculty member, Norman Wells, who was in the math department," said Bill Golden, director for development and university relations. "The committee was formed a couple of years ago, and they came to an agreement as to the criteria."

Originally, June 30 was set as deadline to raise the needed \$100,000. As of Monday, the committee has raised the \$60,000 through retired faculty and staff. The committee has recently made all of the current faculty and staff aware of the campaign, and they hope to raise more of the needed funds through them.

Even though all of the required money probably won't be raised by the deadline, the committee isn't discouraged. "We are still excited," Golden said. "We feel good that it will be a reality."

In September, all the retired faculty and staff will be invited to campus for a luncheon.

"June 30 was the self-imposed deadline because we were trying to have enough money in hand to have something to show them (as far as the project)," Golden said. So far, the committee has

focused on raising the money strictly through the retired faculty and staff.

"I'd say that 99 percent of it has come from retired faculty," Golden said.

Golden also said in the last three weeks the current faculty and staff have been informed about the wall.

David Ruffin, a former instructor, is the chair of the capital campaign committee.

The Wall

The wall will display individual plaques to honor those retired faculty and staff, and all the honorees will receive equal recognition without regard to their financial contribution.

Approximately 350-400 retired faculty and staff will be honored on the wall according to Golden.

"They did not have good retirement records until the 1940s," Golden said. "They will be listed by the year they retire."

In order to be listed on the wall, a faculty or staff member must have served at least 10 years at GSU and have retired here. A committee will be set up for members who feel they should be on the wall despite not meeting all of the criteria.

Golden said if a member had served at GSU for at least 10 years, but had moved on to another school and then retired, they may be heard before the exceptions committee.

Faculty, staff owe more than \$7,000 in fines

Will be required to pay parking tickets before being issued new hangtags this fall

By Chris Sherwood
News Editor

It seems clear that many faculty who have outstanding parking fines either don't think they have to pay or will not pay.

According to official Parking and Transportation records as of May 29, \$7,475.50 was owed in 760 tickets for 395 faculty and staff members.

The policy, developed by the parking and transportation committee last year, restricts faculty and staff who have not paid their fines to receive a hang tag prior to fall quarter until all their fines are paid.

Students have to pay any fines they have prior to registration each quarter. Last quarter, a total of 507 tickets were outstanding on faculty and staff.

In a previous interview, Bob Chambers, director of parking and transportation, said the committee decided the faculty and staff would have to pay their tickets before receiving their hang tags.

Like students, faculty and staff have a chance to appeal any ticket within a specified time period.

Many of the faculty who still owe fines simply have yet to pay their tickets from the year.

Chambers said in a Jan. 10 interview that it was up to the administration if the process of forcing faculty to pay each quarter was implemented or not.

Faculty and staff members can have their vehicles booted just as any student who has more than five outstanding tickets.

THE WORST OFFENDERS

(faculty and staff with \$35 or more in unpaid parking tickets as of May 29)

- Hal Cartee - 10 tickets - \$135
- Mical Whitaker - 10 tickets - \$90
- Karen Ferro - 6 tickets - \$85
- Yolanda Barrow - 7 tickets - \$80
- Alfred Ivery - 8 tickets - \$80
- Richard Hammond - 8 tickets - \$75
- Tex W. Sheffield - 5 tickets - \$75
- Jimmie L. Boyd - 6 tickets - \$70
- Marry Black - 8 tickets - \$65
- John Davenport - 5 tickets - \$65
- David Robinson - 7 tickets - \$65
- Timothy Teeter - 5 tickets - \$65
- Shawn Wheeler - 6 tickets - \$65
- Tommy Macon - 5 tickets - \$60
- Gwendolyn Littles-Curry - 6 tickets - \$55
- Beth Joiner - 4 tickets - \$50
- Jennifer Gooch - 4 tickets - \$50
- John Young - 3 tickets - \$45
- Esther Griffin - 4 tickets - \$45
- David Foulk - 4 tickets - \$45
- Lisa Williams - 7 tickets - \$40
- Bobby Williams - 5 tickets - \$40
- Arnie Williams - 4 tickets - \$40
- Georgia Wiggins - 3 tickets - \$40
- Frank Saunders - 5 tickets - \$40
- Frank Radovich - 6 tickets - \$40
- Gregg Polinsky - 3 tickets - \$40
- Luke Olszewski - 4 tickets - \$40
- Kenneth McMillian - 4 tickets - \$40
- Florence Ferguson - 6 tickets - \$40
- Erika Coffman - 4 tickets - \$40
- Elfrieda Brown - 7 tickets - \$40
- Linda Arthur - 5 tickets - \$40
- David "Bucky" Wagner - 5 tickets - \$35
- Shelia Smith - 3 tickets - \$35
- Diana Sanders - 3 tickets - \$35
- Clarence Outler - 4 tickets - \$35
- Herbert O'Keefe - 3 tickets - \$35
- Harold Nichols - 3 tickets - \$35
- Theodore Mobley - 3 tickets - \$35
- Ruth Gooding - 3 tickets - \$35
- Ted Braswell - 3 tickets - \$35

Alumni director bids farewell

By Chris Sherwood
News Editor

In over 17 years of service to GSU, Alumni Director Gene Crawford has seen a lot of changes. Among them, university status, the resurrection of the football program and the growth of an alumni association which now totals more than 40,000. Crawford will officially step down as of July 1.

Of course, there weren't always that many alumni. Crawford was appointed to the position in 1970 by then GSC President John Eidson. He only had one secretary and membership to the association meant spending \$1 to join. The alumni members were listed on 3 by 5 notecards.

"I have had the opportunity to meet so many fine alumni throughout the country and work with our alumni board of directors," Crawford said. "This has been very gratifying, and there

are a lot of challenges for the new director. I see this as a friend raising position. If we do a good of a job of friend raising, the fundraising will come down the road."

Most memorable moment

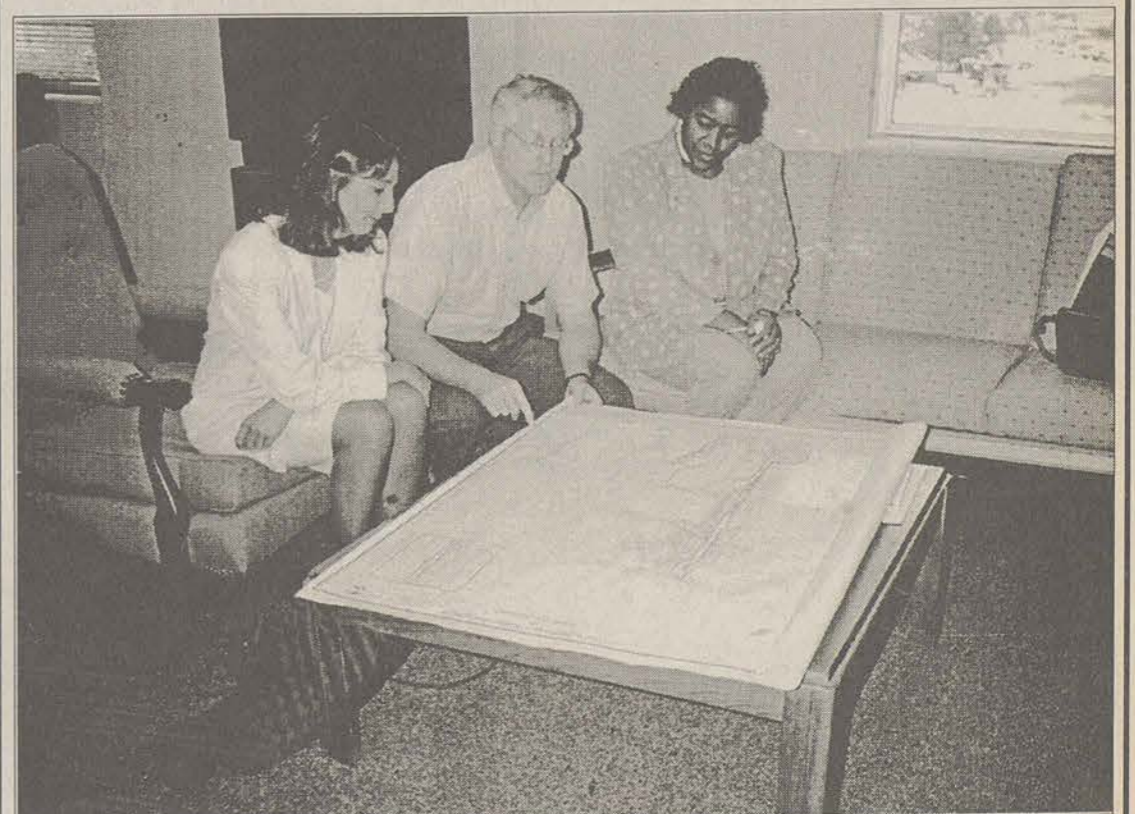
The two things Crawford hold as the most dear to him during his 17 years at GSU are two awards he was given.

When he was named as the alumnus of the year by his colleagues in 1990 and when he was awarded the history award by the history department this year.

"I taught for 10 years (as a principal), and to see those students achieve what they have in life, and thinking I felt that in some small way I might have contributed something to the alumni in my years of serving them," Crawford

Please see CRAWFORD, page 12

The pedestrian of the future



James Hill

The current plans for the pedestrian are on display in the Hollis Building. Three Business professors discuss their opinions about the changes Thursday afternoon.

ON CAMPUS

Bradshaw moves on after success

By Chris Sherwood
News Editor

GSU became the state's first regional university in 1990. With that announcement came certain requirements. Among them was assuming the control over some of the graduate programs at two local colleges. Wilson Bradshaw, GSU vice president and dean for graduate studies and research, was given the task of heading up that educational union.

The arrangement made the graduate programs that were offered at Armstrong State and Savannah State affiliated programs. This affiliation placed the responsibility for conferring all of these degrees on GSU.

Over the four years, the number of programs offered increased. Along with that, enrollment in graduate programs at all three institutions increased.

A study last summer, conducted by former University of North Carolina Academic Vice President Raymond Dawson recommended the return of some of the graduate programs to the Savannah schools.

Prior to the union of the three schools graduate programs, both Armstrong State and Savannah State had offered some well established master's programs.

In his study, Dawson pointed to several items between the schools that have accomplished a lot. They included greater access to more programs and an increased quality in the programs offered.

Dawson said that improved program accreditation's have

been added in Savannah and the three institutions have themselves prospered by some basic measure.

One of the problems pointed out by Dawson was the faculty at Savannah State and Armstrong State were devoting a large part of their time in a term to teaching in the graduate programs, but the important decisions about them affecting their ca-

program control has been returned to Armstrong State and Savannah State colleges, Bradshaw does not think the union failed.

"I think we accomplished a great deal," Bradshaw said. "I can't say enough of how proud I am as far as our involvement. I am proud of what we accomplished. We got our first doctoral program."

"I HAVE MATURED A LOT AS AN ACADEMIC LEADER ... I LEARNED A LOT FROM THE ADMINISTRATORS. I LEARNED THINGS I WANT TO DO, AND I LEARNED THINGS I DO NOT WANT TO DO."

**— WILSON BRADSHAW
OUTGOING GSU VICE PRESIDENT**

reers were really being made by GSU supervisors.

"Part of the rationale was that we could take three and put them into one graduate college," Bradshaw said. "The graduate enrollment went up. All three schools had to struggle with the loss of autocracy."

What Now

Now, more than five years later, GSU no longer assumes the responsibility for all the graduate degree programs offered in Savannah. That is one of the main reasons Bradshaw announced that he would be taking the position as provost and vice president for academic affairs of Bloomsburg State (Penn.)

Even though the graduate

Bradshaw said he thinks GSU will continue to offer, in much the same way it did prior to 1990, graduate programs.

"What we will see now is a closer cooperation between the three schools," Bradshaw said. "GSU will still be the leader in Southeast Georgia for graduate education."

The GSU Graduate Program

"We have quite a lot of respect in the region," Bradshaw said. "We are expanding because the statue of our programs. Our reputation is being enhanced now outside of the region, and outside of the state."

Bradshaw on Bradshaw

"I have matured a lot as an academic leader," Bradshaw

said. "I learned a lot from the administrators. I learned things I want to do, and I learned things I do not want to do."

Bradshaw also said will never felt that they (the vice presidents and GSU President Nicholas Henry) ever made and egocentric decision, but made decisions that were in the best interest of the school.

The Board of Regents

"I think they tried to enhance graduate education in the region," Bradshaw said. "This is the evolution of three institutions."

He said the changes were made with the Board as to what would best serve graduate education. The programs have evolved through examining what worked and what did not.

The future of GSU Graduate Studies

Since current Chancellor Stephen Portch assumed the responsibilities of heading up the Board of Regents last year, he has asked that all the institutions redefine and reform their mission statements.

"GSU, Georgia State and UGA all have their particular niche in graduate studies," Bradshaw said. "Will GSU expand their graduate programs, yes. Will GSU become a research university, probably not."

Bradshaw said GSU will continue to be a premier residential undergraduate institution.

An informal farewell reception was held for Bradshaw yesterday in the Russell Union by GSU President Nicholas Henry.

ON CAMPUS

Speakers for spring graduation chosen

GSU News Service

GSU's spring graduation exercises for nearly 2,000 students are scheduled for Hanner Fieldhouse June 10-11. They will be keynoted by Scott Carpenter, one of the original Mercury astronauts, and Jan Kettlewell, assistant vice chancellor for academic affairs of the University System Board of Regents.

Carpenter will speak at the June 10 ceremony while Kettlewell will address the June 11 commencement.

The College of Business Administration and the College of Science and Technology will present degrees to 850 graduates at 11 a.m. June 10. President Nicholas Henry will hold a reception for parents and graduates from those colleges, the College of Liberal Arts and Social Sciences and the College of

Health and Professional Studies will be in the Russell Union Ballroom from 2 - 3:30 p.m.

The colleges of Liberal Arts and Social Sciences and Health and Professional Studies will hold a joint ceremony at 6:30 p.m. in Hanner also to be addressed by Carpenter.

A President's reception for graduates and parents of the College of Education is from 5-6 p.m. June 11. The College will hold its ceremony for about 450 students at 3 p.m. in the fieldhouse keynoted by Kettlewell.

Carpenter was one of the seven original Mercury program astronauts and piloted the second manned U.S. space flight in May 1962.

Kettlewell serves as the acting assistant vice chancellor of the University System of Georgia.

ON CAMPUS

Would you like fries?

By Ronnie Swinford
Senior Staff Writer

In response to a "Letter to the Editor" in *The George-Anne*, Lakeside Café has instituted a new substitution policy for all contract meal plans.

"We first altered the meal plans to accommodate the cheerleaders who were coming in late after practice," said Director of Food Services Tom Palfy. "They didn't want French fries all the time so our manager at Lakeside decided to sub fruit for fries."

A new policy has now been instituted to allow more substitutions for fries, Palfy said.

"After seeing the letter in *The George-Anne* we decided that we

needed to change the combos meals again," he said. "We will now offer a choice of either two vegetables, soup, or fruit instead of fries in all of our combos."

"We are planing on offering a side salad as well, but the price of lettuce is so high now due to the flooding in California, that we can't offer the side salads right now," Palfy said. "We are also planning on instituting the same policy at the Union Station, they will not have the option of the vegetables or soup, but we can get them some fruit and allow them to substitute the salads as well."

Kiersten Trinosky wrote the May 23 letter.

ON CAMPUS

Computer users must have I.D. or visitor's pass

By Amanda Figg
Staff Writer

Henderson Library's new I.D. display policy with the LRC computers is still confusing students.

Before a student uses a computer, they must place their I.D. card in a plastic pocket on the side of the computer. On May 1, this change was enacted. Student assistants instructed to ask all people using computers to display their I.D.'s or obtain a visitor's pass.

According to Julius Ariail, library director, the students seem to be cooperating, and have complained little.

"It will take people a long time to get used to this change, but all the bugs should be worked out by the fall," Ariail said.

Thus far, no members of the faculty have complained, and the main gripes with students is the lack of understanding as to why they need to display the cards.

Visitor's passes are available if students lose or forget their

cards and also for non-GSU students or faculty.

These passes may be obtained by signing a form warning the visitor of the information on the Internet, some of which is inappropriate for younger users.

Ariail said the decision to implement the I.D. card program came as a result of the complaints from parents of high school students who were using the Internet on weekends, and also because of the lessened access for GSU students.

Other New Changes

By August, 26 new computers equipped with pentium processors will be installed. These computers will have Internet access to the World Wide Web, which will have full-color pictures, hypertext and access to over 1,000 full text journals. The WWW will offer access to the previous night's news and full color pictures of numerous items.

With these additions, the library officials wanted to secure priority access to GSU students.

"We are not doing this to punish students, but our number one priority is to guarantee computer usage to GSU students," Ariail said. "We may have to start giving out numbers like they do at Baskin Robbins, but our main concern is our students' access to computers."

Another change which has seen favorable response is the addition of Zach's Snacks located on the first floor. It is one of only three programs of its kind in Georgia.

The Medical College of Georgia and Kennesaw State College are the other schools which offer similar food stations. So far, the program is working well and the students are following the rules by only eating and drinking in the designated areas.

Ariail said that in one week, 45 cases of drinks were sold.

The new rail on both sides of

the library steps is another improvement which was made this quarter. It was the result of a student's suggestion made almost a year ago. The railing was completed May 8.

Briefs

Blood drive set

GSU News Service
Students, faculty and staff will be able to donate blood today and tomorrow on the GSU campus.

The two-day blood drive will begin today at

the Williams Center from 10 a.m. - 3 p.m.

Tomorrow, the hours will be from 2 - 7 p.m. The drive is sponsored by Sigma Alpha Epsilon.

The blood collected will serve the hospitals in the area. Any additional blood will be used in other places, such as for disasters like Oklahoma City.

Pageant on horizon

GSU News Service

The current Miss GSU, Cyndi DeLoach, and former GSU student Seleta Hayes, current Miss Southeast Georgia, will compete in June in the Miss Georgia Pageant. It will be held in Columbus.

The Eagle Print Shop
"on the loading dock"
Located across from the Russell Union in the Williams Center

For All your copying needs and MORE

- Color Copies
- Banners
- Posters
- Plain Paper Fax Services
- Lamination
- Transparencies
- Invitations
- Business Cards and more

Phone: 681-5697
Fax: 681-0795



SONIC

ONE MORE TIME!
Sonic FIFTIES Celebration!
April Combo Values That Can't Be Beat!

(A) • Deluxe Sonic Burger • Regular French Fries • Regular Soft Drink	\$1.99
(B) • Ex-Long Chili Cheese Coney • Regular French Fries • Regular Soft Drink	\$2.19
(C) • Country Fried Steak Sandwich • Large French Fries • Large Soft Drink	\$2.59
(D) • Breaded Chick-Filet Sandwich • Large French Fries • Large Soft Drink	\$3.19
(E) • Booby, Meat, Double Crosshanger • Large French Fries • Large Soft Drink	\$3.39

SONIC
DRIVE-IN • 322 South Main • DRIVE-THRU

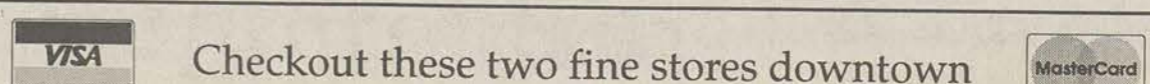
R.J. Pope
Traditional Menswear

• TOMMY HILFINGER
• NAUTICA
• TIMBERLAND
• POLO-RALPH LAUREN
• TEVA OUTDOOR SANDALS

The Cobbler's Bench
Specializing in Ladies Accessories, Clothing, and Shoes
7 S. Main St.
764-9498

5 S. Main St.
764-4306

Check out these two fine stores downtown



The Educated Palate

Special This Week
Italian Sub Sandwich
\$4.50

Check for our weekly Specials.
Now selling pizza by the slice, carry out only:
cheese \$1.33 • pepperoni \$1.55

Lunch 11-2:30 Dinner 5-8:00
Call 681-5303



POLICE BEAT

GSU Division of Public Safety

May 24, 1995

•A Lanier Drive resident reported someone entered his Jeep in the Union commuter lot and took an amplifier.
 •A resident of Oxford Hall reported someone entered his car in the Oxford Hall parking lot and took a cassette player and radar detector.
 •An Olliff Hall resident reported he received harassing phone calls.

Statesboro Police Department

May 27, 1995

•Carey Dougherty, age unknown, of Hawthorne II Apartments, reported a case of burglary.
 •Donna Dingle, 19, of Stadium Club Apartments, reported a case of criminal trespass.

May 26, 1995

•Patrick Joseph Avard, 18, of Thomasville, was charged with DUI, driving on roadway lane for traffic and driving with no

proof of insurance.
 •Melanie Melton, 19, address unknown, reported a case of criminal trespass.

May 25, 1995

•Terrence Nakia Brown, 20, of Bermuda Run Apartments, was charged with driving with an expired tag, having no insurance, failure to use turn signals and driving with a suspended license.
 •A structure fire was reported at Sussex Commons Apartments.

May 24, 1995

•Michael Patrick Larson, 21, of Atlanta, was charged with DUI (.015) and driving with no proof of insurance.
 •Ebru Gorunmez, 23, of Statesboro, was charged with furnishing alcohol to a minor.
 •Stephanie Jolley, 22, of University Place Apartments, was charged with furnishing alcohol to a minor.
 •Tanya Rae Baker, 17, of Sylvania, was charged with furnishing alcohol to a minor.
 •Greg Sandifer, 24, of States-

boro, was charged with furnishing alcohol to a minor.
 •Michael Ross Minard, 19, of Pembroke, reported he was bitten by two cats.

May 23, 1995

•Mathew J. Long, 23, of Park Place Apartments, reported someone entered his Jeep.
 •Jonathan Daniel Bohta, 18, of Stadium Club Apartments, reported someone slashed two tires on his car.
 •Lindsey Notter, age unknown, of Fair Road, reported a case of entering auto.

May 22, 1995

•Shari Dawn Teets, 23, of Statesboro, was charged with furnishing alcohol to a minor.
 •Stephen Edward Youngblood, 23, of Swainsboro, was charged with furnishing alcohol to a minor.
 •Ifa Katina Brunson, 22, of Register, was charged with furnishing alcohol to a minor.
 •Shah Beeve, 21, of Statesboro, was charged with furnishing alcohol to a minor.

•Shanda Kirkland, 19, address unknown, was charged with furnishing alcohol to a minor.

•David Gaskins, 23, of Macon, was charged with furnishing alcohol to a minor.

•Gregory Scott Darnell, 23, of Statesboro, was charged with furnishing alcohol to a minor.

•Renna Pravinchandr Shah, 20, of Statesboro, was charged with furnishing alcohol to a minor.

•James Walter Esker, 20, of Statesboro was charged with furnishing alcohol to a minor.

May 21, 1995

•Rodriques Gabriel, 18, of Metter, was charged with weaving, driving with no insurance, and driving without a license.

May 17, 1995

•William Dudley Blalock, 19, of Waleska, was charged with underage possession of alcohol.

Bulloch County Sheriff's Office

May 25, 1995

•Lonnie Brazell Jr., 22, of Chester Bragg Road, was charged with contributing to the delinquency of a minor.

Time Warp!



A Look at Georgia Southern, 10 Years Ago This Week

The task force report on Program and Budget Review recommended the elimination of 19 faculty because of the drop in student enrollment.

A lien was placed on the Allen E. Paulson Stadium which stated that the Southern Boosters owed Foster and Cooper, who were contractors for the stadium, \$262,939.50 plus compound daily since December 1984. The lien was placed on the stadium so GSC could not sell the stadium before it was finished being built.

— Compiled by Jana Mobley

Stadium Club
 Now Leasing
 For Fall '95
 * Lowest Rates on Campus
 * Flexible Leasing
 * Fully Furnished Apartment
 (912) 681-2437

INSIGNIA MANAGEMENT GROUP

ANNOUNCEMENTS

Things to do at GSU

Ongoing

•Volunteers are needed at the Statesboro Regional Library to read books to children during the spring RIF book distribution May 11 - 23. If you have 10 minutes or more and would like to make a difference in the life of a child, please call 764-7573 or stop by the library to sign up.

Today

•"The Icicle Thief" will be shown at the Russell Union Theater at 7 p.m. It is Italian with English subtitles.
 •A workshop on Internet/E-Mail will be held in the Henderson Library. The train-

ing session will begin at 5 p.m. in the LRC room 105.

•A blood drive will be held in the Williams Center from 10 a.m. to 3 p.m.

Wednesday, May 31

•The physics department presents a planetarium public show. It will begin at 11 p.m. The doors close at 11:10p.m., so get there on time. The program will last 30 minutes and is free. It will be held on the first floor of the Math/Physics/Psychology Building.

•The GSU music department presents "GSU Percussion Ensemble" at 8 p.m. in the Foy Recital Hall.

•Ogeechee Technical Institute

will offer several continuing education classes in the month of May. All classes will be held at Ogeechee Tech.

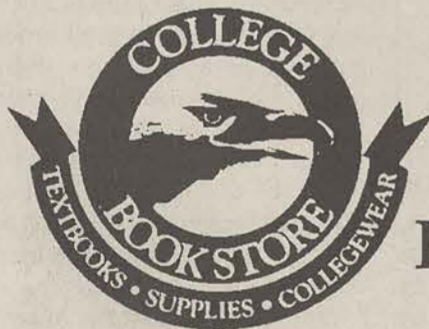
•A blood drive will be held in the Williams Center from 2 p.m. to 7 p.m.

May 15 - June 29 - Help, I'm a Computer Idiot - Due to the tremendous number of people that have requested that we offer this course for a second time this quarter, we are going to be offering this again. This is the course for everyone that feels they have been left out of the computer generation. Learn the basics of a computer and what it can do to enhance your life. The cost is \$40.

Remember to sell your Spring Quarter Books Back

to:

The College Bookstore



During Finals Week



School Supplies • Book Bags • Scantrons
 Gift Items • Eagle Pendants • Trade Books

20% off

All GSU Adult & Children's Clothing
Have A Great Summer

Up Productions
 GEORGIA SOUTHERN UNIVERSITY

The Joke Zone
 Q: Did you know I took two sheep to make that shirt?
 A: No, I didn't know that sheep could sew!

Red Cross Blood Drive
 Williams Center
Tuesday: 10 am - 3 pm
 Free Professionally Drawn Caricatures While You Wait (11 am - 3 pm only)
Wednesday: 2 pm - 7 pm

Thursday, June 1
APOLLO NITE
 Union Theatre 6 pm
FREE!

Reggae Fest shirts for sale @ Emporium for \$5.00 Each

Braves V.S. S.F. Giants
 All summer school and working students interested in going to an Atlanta Braves game needs to call Linda Rushing at 681 - 0399. Linda can also be reached at the UP in room 224 of the Russell Union.
 \$40 covers transportation, overnight stay, and a field-level ticket. (Limited space available.)
 Date: Sat. July 8, 1995
Braves V.S. S.F. Giants

Union Productions Committee Interest Form
 Yes! I want to be involved in these committees!!
 The Joke Zone _____ Big Time Entertainment _____
 Sound Waves _____ Games People Play _____
 Contemporary Issues _____ SPLASH _____
 Name _____
 LB _____
 Local Phone _____
 For more info on Union Productions call 681-5442 or mail interest form to LB 8066

Coming Soon! SUMMER

Union Productions
681-0461
 Office 681-5442
 LB 8066 GSU
 Statesboro, Ga 30460

Our Opinion

Banning must be discussed

Last week the Faculty/Senate gave reason for the campus to believe they would rather not actually bring the issue of banning bicycles from the pedestrian up to public scrutiny.

Before the meeting began, the declaration was made that the bike issue would be talked about when the meeting was officially over. Now, at the beginning of the meeting, Ken Brown, the chief of police for public safety, David Hainley, a landscape architect, and George Shriver, the faculty member who brought the issue to the forefront, were in attendance. By the end of the meeting only Mr. Brown and Mr. Hainley were present.

What was extremely depressing was that only a hand full of faculty stayed to ask questions. Of the ones that did stay for the session, most just looked at the proposed plan and did not ask questions on the subject.

Along with faculty and staff members, Student Government Association vice president of academic affairs, Gavin Shook, and executive vice president, Carlton Dickerson, and a representative of the official student newspaper of Georgia Southern University were present for the discussion.

The voice of the student body was in attendance. Then, all of a sudden, the communication between the powers that be all but seemed to stall right during a golden opportunity to clear the air of the findings and the progress made on the proposal.

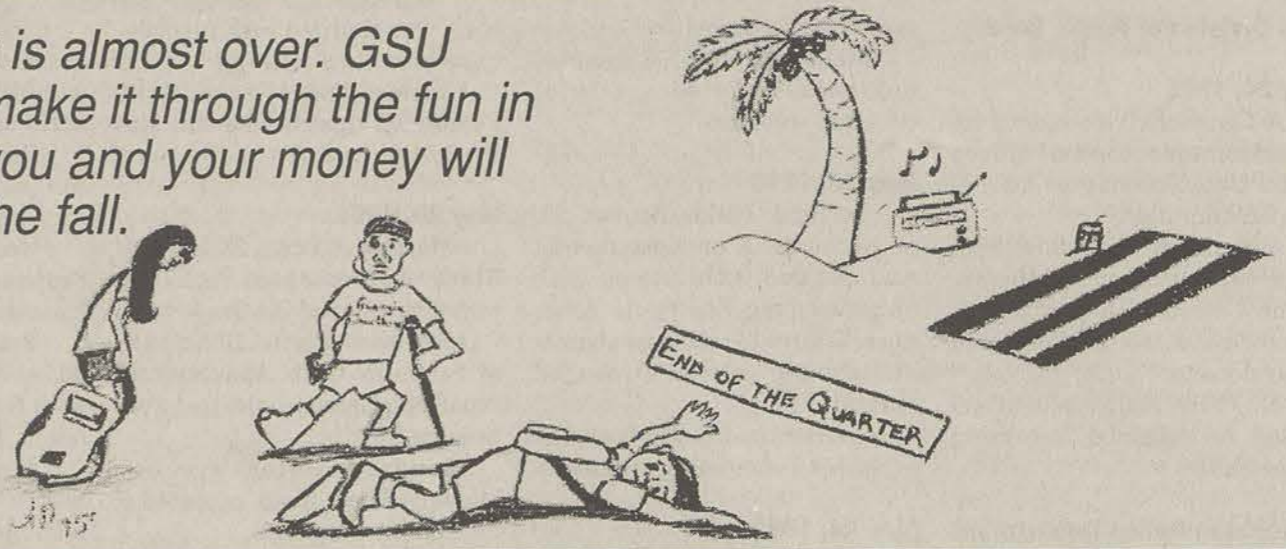
Obviously, the most disheartening aspect is that Mr. Shriver, the individual who introduced the concept to the President's Council, did not stay to discuss the ban. This leaves our publication to question the integrity of the passage of a bill that was formulated without the consent of the student body through an one-on-one poll or SGA.

Faculty and staff pedal their bicycles to campus and on campus, which, in short, means there is an interest from people other than students about riding bicycles on the pedestrian. So please do not believe that the uprising of discontent comes only from the students.

If the bicycle banning proposal, which is still being finalized, is truly supposed to make our institution safe from the disparity of reckless bike riding, then a concerted effort must be formulated where the main individuals involved are in attendance.

For those willing to discuss the issue at length within a public setting, we appreciate your concern. For those who have major parts in the process but have neglected their responsibility, we request you fulfill your duty as an informant in what may be the first item to affect the entire campus since the parking issue.

Students: It is almost over. GSU hopes you make it through the fun in the sun so you and your money will be back in the fall.



Sorry .02 percent who like me; I'm through

You feel it coming. You know the end is near. You anticipate reading it. This is my last column as editor of The George-Anne.

I hope each of you have received the greatest amount of pleasure possible from engulfing that lone sentence into your memory. I know faculty, staff and students across the board relish in my leaving, but at the same time I hope at the .02 percent that wished I would stay. For those faithful, your check is in the mail. I think my time has come to move on.

But please, don't you dare believe I wouldn't have a few spare comments to make about what I've noticed through my three years at the official Georgia Southern student newspaper.

Please let me start with the most recent developments that will have largest impact on the lives of GSU students.

The individual who orders the two-ounce cups and lids for the campus really needs to check the numbers. For three weeks, an absence of lids has been apparent at the Union Station and Lakeside Café. I am no mathematics major, but it would seem to me that when n number of cups are ordered then the same n number lids should accompany them. I truly believe this miscount does not fit in the same realm as being \$60 million in the red like "Forrest Gump" is but it is still pretty bad.

Those kiosks or "little blue buildings" located strategically around campus need something. The computer system that was to be implemented within the structures must be, well, stalled, restalled, stalled again ... you get the idea. Here is a suggestion: why doesn't the

IN THE EDITOR'S OWN WORDS

ENOCH W. AUTRY



school transform them into doughnut shacks for those scampering off to class and other appointed rounds — this is much better than having stapled-up band information.

The orange "fence" around the south end of campus is an eyesore. It is understandable that to successfully bring about the extension of the Pedestrian something must impede people from treading across the property, but let's look at improving the appearance. The best idea would be to establish a petting zoo for small furry or not-so-furry critters. How about putting in some opossums and armadillos? I venture to guess 78 percent of the campus thinks these two creatures are born dead with as much roadkill seen on the highway.

The fountain gets a bad rap and there is good reason — it is ugly. But if a couple dimensions are added then it might just be transformed into something of decent appearance. The presence of a little ceramic "Dutch Boy Paint"-type figure on the southern end of the pool and some goldfish within the rippling waters would be just the right accents.

Here is a brief summary of the current good and bad of school ongoing.

The belief that GSU as a regional university is still in the experimental stage — bad. The attempt for GSU to slowdown

growth to catch up in the academic and facilities arena — good. The condition of the College of Business and College of Technology buildings — good. The condition of the Williams Center and South Building — bad. The basketball program and Savannah graduate program — bad. The swimming program and nursing program — good. The bicycle ban — bad. The bicycle alternative route — good. The bombing in Oklahoma City — bad. The support GSU gave the bombing victims — good.

I could go on forever, but I just remembered that only .02 percent of you like me so I must move along as not to tick anyone else off.

During my years here, I have gotten to know many people of "power" and also the "little" people who assists me in accomplishing the difficult job of informing an entire campus. I can't help but bring some of those people out of the past as reminders of what used to be.

To Scott Wood, the current Bulloch County manager: when you decided to pull out your latest copy of "L.L. Bean" and read it while I tried to interview you about the bypass in February 1993, I got extremely ticked off with the disrespect you gave me and my eventual full-time profession. Now I have grown up a great deal, but hope the people of Bulloch will notice how you also

avoid their interests and decline you from another term.

To Dave Burns, communication arts professor, wherever you are now: yes, on a U.S. map drawn to resemble a cow, New Jersey is in the rump.

To David Moskowitz, a political science professor, whatever you are now: Leslie Stahl really did make Ronald Reagan look bad, but nobody seemed to care. Also, thanks for trying to save our geese.

To next year's copy editor, whomever it may be: remember it is Nicholas Henry not Henry Nicholas.

To that lady who said I wouldn't make it any further than just a staff writer peon: you were wrong.

To all the professors whose classes I missed on a regular basis while under the time constraints of this job: I have eyewitnesses to prove that every day I missed I was at work.

To the editors I had the opportunity to work under: thank you for pointing me in the right direction.

To Bill Neville and Robert Bohler, advisors: thank you for stepping aside and allowing me to conduct the newspaper in my fashion.

To The George-Anne staff: I hope my abusive language to you has not changed your thoughts about becoming a professional journalist.

To next year's editorial board of Chris Cole, Mandy Crews and Ashley Hunt: no matter the circumstances, you have the backing of the officially-now-departed editor.

To the readers: thank you for taking the time to browse through our publication from time to time.

Appreciate the diversity, eliminate the ignorance

As the first year of my college experience winds down, I have been rethinking what I have learned these three quarters. The interesting thing is that while I've gained some "book knowledge," most of the things I will carry with me have very little to do with schoolwork and grades. I have found that college life isn't at all about turning in reports, making the Dean's list, and cramming for finals. Rather, it is about people and building relationships with them.

Many of the people who have been involved in shaping my life and sharpening my character are people that I have met here at GSU. That's what it's all about to me, reaching out and making an impact on someone else's life.

For so much of my life, I was a shy little girl living in a shell of insecurity. Until someone took the time to reach out a hand to me and show me that I am somebody ... somebody with a mission in life, somebody with goals to reach and people to touch, somebody who was wasting the talents the Lord had given me by hiding within myself. That person was Olivia Rigdon. I am forever in debt to her.

Miraculously, I became an outgoing person, determined to reach other "shell dwellers" like I had once been because she reached out to me. I want, when I die, to know that I made a difference to someone, and I want Olivia to know that she is the someone who made a difference to me.

IN OTHER WORDS

JANA NEWSOME

Since I had overcome my fears of reaching out, my next barrier to eliminate was the fear of diversity. I had to give of myself to all people, not just people who were like myself. Coming to GSU was exactly what I needed. This campus is a melting pot of diversity.

I began to reach out to people for the first time who were (gasp) different than myself. The friends I have made and the blessings I have received from doing so have far outweighed the anxiety I once felt. I have discovered that the largest problem facing the U.S. today is not political, it isn't drugs, crime, or even poverty ... it is ignorance.

So many of us don't know enough about other people to understand them, so we stamp them with a stereotype and avoid them. It is such a shame!

People of other races and cultures have so much to teach us about themselves. Yet, everyday we shut the door on them and an opportunity to expand our horizons.

social classes, and people who may not share our own views. While we do not have to become like them, we sure can learn a lot about how they think just by talking with them for a while. And, in turn, we learn who that person really is and why. Sometimes, something they say will even bring light to flaws within ourselves and help us to become better people. It is through others that we learn who we are and what goals are important to us.

There is nothing more beautiful than a person who has found him or herself through the efforts of someone else who took time to reach out. The bond that is created between two such people is incredible.

So many people have reached out to me and changed my life. If I had focused on our differences and let ignorance interfere, I never would have had the chance to receive what they had to give. Several of the people who've influenced me include my two best friends, Eddie and Betsy, and two people, Wan and Edna, that I met through work.

You see, I deeply respect all of them, yet they all are very different than myself. Betsy is younger than me, yet growing up together, we scarcely noticed. Wan is Chi-

nese. She has really encouraged me the way she basically taught herself to speak English, not to mention that she is the hardest working person I know. Edna and I are more than 55 years apart in age, yet our friendship bridged the gap. I think she is one of the wisest people I've ever met. And then there's Eddie. No one has impacted my life more than he.

You see, five years ago when I met Eddie, he gave me a gift like none other. He introduced me to the unconditional love of God and I could see it in his life. Eddie showed me that God loved me, and in turn I was to love all people as God does ... without condition.

The scary thing is that if I had limited my friends to people just like me, I would have missed out on Eddie. You'd never know it by his blond hair and green eyes, but Eddie is Mexican-American. Yet, it has never made a shred of difference in our friendship, only added to its specialness.

Diversity is the spice in our lives. If we each can appreciate it, our lives are a lot more flavorful. Take the time to reach out to someone and reap the benefits, it could be the foreign guy you haven't spoken to all quarter sitting next to you in English, or an elderly person in front of you in line at Wal-Mart.

The next time you are tempted to shut out someone because of their differences, give them a chance. It may just change your life.



Backtalk

GSU needs to put signs in the Pines for visitor parking. We can see how they making all their money from tickets. CAN'T PEOPLE VISIT?

— W. Montgomery student

STAFF

NEWS

Copy Editors: John Kluttz; Anna Murdock; Layout Editor: Mandy Crews; Assistant News Editor: John Munford; Senior Staff Writer: Kim Wagner; Staff: Jan Boulware, Stacy Jordan, Stephen Kirven, Jana Mobley, Melanie Weinberg, Meredith Whitt

FEATURES

Features Editor: Ashley Hunt; Arts & Entertainment Editor: Josh Bass; Senior Staff Writer: Derek Lewis; Staff: Erika Anderson, Eric Bray, Stacy Clemons, Judith Cunningham, Kwaseera Dixie, Suneae Euell, Chris Hall, James Salter, Tijuana Thomas

SPORTS

Sports Editor: Jeff Whitten; Senior Staff Writers: Scott Garner, Ronnie Swinford; Staff: Scott Cullen, Mark Harrington, Tonya Hilton, Josh Nunez, Aaron Solomon, Carolyn Wynn

OPINIONS

Staff: Josh Bass, Christopher Cole, Julie Collins, Ashley Hunt, Derek Lewis, John Munford, Jana Newsome, Amy Staats

PHOTOGRAPHY

Chief Photographer: James Hill; Staff: Sarah Brinkley, Darryl Jones, Michele Hess, Jerome New; Contributing Photographers: Ronnie Swinford, Randy Trujillo

ARTWORK

Leigh Braddy, Shawn Chavis, Adam Nelson, Anna Murdock, Michelle Underwood

CIRCULATION

Supervisor: Steve Taliaferro; Staff: David Hillis, Bruce Karr, Scott Newton

ADVERTISING/DISTRIBUTION SERVICES (ADS)

Advertising Manager: Brooks Clements; Business Manager: Stephanie Wylie; Marketing Coordinators: Rob Gayle, Jana Mobley; Sales Representatives: Tonica Anderson, Leigh Braddy, Melissa Goodman, Steve Keller, James Salter, Heather Turner, Stacy Wood, Carolyn Wynn

PRODUCTION AND GRAPHICS EDITORIAL SERVICES (PAGES)

Production Managers: Ron Lair, Scott Mulkey; Staff: David Beck, Aquila Bookhart, Tamara Gilbert, Mitch Mitchell, Blair Schultz, Shawn Sunderland, Monica White; Classified Ads Manager: Melissa Goodman; Darkroom Manager: Randy Trujillo

STUDENT PUBLICATIONS COORDINATOR

Robert Bohler: News, Editorial Advisor; Bill Neville: General Manager

Your Opinion

Students remind dean of important things

Dear Editor,
A couple of weeks ago was a difficult time for me here at Georgia Southern and I almost lost sight of one of the main reasons that my work means so much to me. Fortunately, I was invited to attend the 1995 Essence Awards program on Friday evening (May 19) and was reminded of how much I enjoy and benefit from my contact with students on this campus.

The members of the Black Student Alliance and the NAACP recognized outstanding scholarship, leadership and community service among African-American/Black students here on campus. They also recognized faculty/staff who have been supportive of diversity on campus.

The caliber of our students was so impressive to me as their accomplishments were highlighted by their peers. I felt an overwhelming sense of pride in all of our students but, in particular, our students of color.

When they chose to give me an award in recognition of my dedication to diversity and multiculturalism, I was as honored as I have ever been in my life. To be recognized along with Randy Gunter (educational opportunities program director), Renata Newbill-Jallow (educational opportunities acting director), Mical Whitaker (communication arts assistant professor), Stephanie Ray (multi-cultural programs coordinator), Lane Van Tassell (political science department chair) and others was a personal and professional achievement for me.

The fact that this recognition came from our students made it even more significant.

I have watched our student body change and grow over the years. We have made a great deal of progress in recognizing

and appreciating diversity although we still have much to accomplish. The work of students such as the leaders who planned and organized the Essence Awards program makes this campus unique. I am appreciative of the opportunities that I have to learn from our students on a daily basis. I left the ceremony with a renewed sense of commitment as an educator and as a life-long learner and I thank our students for reminding me of the important things.

Jane Thompson
Assistant Dean of Students

Have power, will change

Dear Editor,
This letter is a reply to the May 23 letter written to the Editor from Kiersten Trinoskey entitled "Someone with a little power: change it." Kiersten, I am someone with a "little power." Please come by and talk to me at the Auxiliary Service offices on Knight Drive, or call me at 871-1193. I would be more than happy to address your concerns.

Tom Palfy
Food Service Director

Editor's note: An article disclosing the restaurant affirmations is printed on page 2 in this issue. Ms. Trinoskey's letter requested that "someone with a little more power" look at giving the GSU community a choice instead of just French fries for combo meals.

LETTER AND SUBMISSION POLICY

The George-Anne welcomes letters to the editor, story submissions and guest columns from people both inside and outside the Georgia Southern University Community. All copy submitted should be typed (double-spaced, please), preferably on Macintosh disk in Microsoft Word or Microsoft Works format. All submissions must be signed and include a mailing address and phone number for verification. The editors reserve the right to reject any submission. There is no word limit on submissions. A writer may request to remain anonymous. However, it will be the editor's decision whether or not to print the name. Submissions are run on a space-available basis.

Claiming one thing but living the other angers me

Dear Editor,
I am writing this letter in response to the many articles and seminars that have occurred over the past few quarters concerning the issue of how God views homosexuality.

It seems to me that there are a lot of people claiming to be followers of Christ who are not reading the very book Christ gave us, the Bible. Many arguments can be made using science, psychology and any sexual activity out of the context of a heterosexual marriage.

Throughout the Old and New Testaments there are several instances where God speaks out that homosexual activity is wrong, or to be blunt, it is sin, plain and simple (Try Leviticus, 2 Timothy and Corinthians for starters). There is not one simple instance where the Bible looks at homosexuality in a positive light, or where it condones homosexuality.

Even if only one verse says something is a sin, it is a sin!

I for one am tired of hearing people who are showing there ignorance by proclaiming that the Bible supports homosexuality, but that is not the main point I am trying to make.

My point is this, there are many passages in the Bible where it talks to Christians and tells us how we should live our lives. We are told that all scripture is God breathed and relevant and is the standard to

which we are to strive to live up to. We are told that you are either for God or against God, you can't take the middle road, there is no neutral ground. God says that he would rather you be hot or cold, don't be lukewarm.

Much of what the Bible says, admittedly is not always easy to agree with, and often times makes us feel uncomfortable. That is because God is God and we are not. He created this world and set the standards we are to live by, and as I think all would agree, He is the one who we will have to answer to, why not begin to change our lives to do what God wants us to do.

After all, He isn't going to ask us what interpretation did we use, or how we rationalized what we do, but did we obey Him. After all He is God, not us.

If you want to justify anything hard enough, you can find a way to edit, omit, reinterpret, ignore, or label as irrelevant anything that the Bible says, but we need to realize that the lines are not drawn by us, they have been drawn before we were ever around. After all, God has been doing this for quite some time now. If you claim to be a follower of Christ, why not try spreading

His work and His kingdom, rather than this movement, or that philosophy. Those teaching the "anything goes" philosophy are not helping the very people who need help the most.

I don't want anyone to misunderstand what I am saying. God does not hate homosexuals anymore than he hates heterosexuals. God is a God of love, and because He loves us He set His standards for our protection.

What we are told is that God hates sin. Plain and simple. We are so afraid as Christians to get a little backbone and admit that we are not perfect and that we need God. Quit worrying about who's coming out of the closet, and start worrying about cleaning the closet out instead!

In other words, to all of us Christians, it is time to put up or shut up. If you want to live a life of doing your own thing, regardless of whether or not God supports it, go for it!! You will have to answer to that one day, but realize that the Bible does not back it up and you will have to answer to God for the many people you have become a stumbling block for, turning them from God and the Bible, to the world and all its failings.

Dear GSU community,
Covering a campus where the normal sometimes shakes hands with abnormal has its moments. For a year, under the leadership of myself as editor, our staff has reported upon investigations to abductions, arrivals to departures, and many stops along the way.

Because of issues that have arisen through our coverage and those from your piqued interests, several discussions have been voiced by "Letters to the Editor." I, on behalf our staff, want to thank our readers for your participation.

Sincerely,
Ernest Anthony


FREE RENT
Property under new management, needs a Community Advisor.
For more information, contact the Office of Special Programs,
Rosenwald room 289 or Phone 681 - 5409.

LAST CHANCE
to Return Your SGA Rental
REFRIGERATOR.
Take your refrigerator to the SGA Warehouse on Plant Avenue on the following days:
Monday, June 5 4:00 P.M. - 8:00 P.M.
Tuesday, June 6 4:00 P.M. - 8:00 P.M.
Wednesday, June 7 4:00 P.M. - 8:00 P.M.
Thursday, June 8 4:00 P.M. - 8:00 P.M.
Friday, June 9 4:00 P.M. - 8:00 P.M.
For additional information, contact the office of Russell Union at 681 - 0399.

I am not mad at anyone who is living a homosexual life. Without Christ we are told it is all useless. I am not even angry with Christians who struggle to overcome. I am very angry with those claiming to be one thing but really living the opposite, and smearing God's pure and holy name through the mud by saying He supports sin. I, a sinner proud to be covered by His grace and not my own words, thank God that He has a better plan for my life than I can possibly come up with, so despite my weaknesses and my sins, I am going to choose to allow God to continue to challenge me to turn from myself and turn to Him.

It isn't easy to follow Him. He said the road is narrow and few choose to take it, but it is a road that is full of lasting joy and abundant life. If you think you can't possibly overcome your struggles with whatever sin there possibly is, read Philippians 4:13. "I CAN DO ALL THINGS THROUGH CHRIST WHO STRENGTHENS ME!"

Chase Puckett
student

THE KEY TO ENJOYING BETTER SIGHT

Krystal Pusser Bragg, O.D.
730 Northside Drive East, Statesboro
(located in the Wal-Mart Vision Center)
General and contact lens exams available Mon.-Sat.
For your convenience, we now accept:
Blue Cross and Blue Shield of Georgia, Inc., Vision Care Program
Call 764-9750 to schedule an appointment

Delivering The Perfect Pizza!

871-PAPA
(7 2 7 2)
Fast • Hot • Perfect
Pizza
FREE DELIVERY • CARRY OUT
620 FAIR ROAD

Two Large Pepperoni Pizzas
\$10⁰⁰ Plus Tax
Additional Toppings 95¢ each
Not valid with any other coupon
Valid only at participating stores
Offer expires 6/13/95

Perfect Brunch or Late Night Munch
One 10-inch Pizza,
Two Toppings & Two Drinks
\$5⁹⁹ Plus Tax
(Mon.-Thurs. 11 a.m.-4 p.m., 6 p.m.-close)
Additional Toppings 70¢ each
Not valid with any other coupon
Valid only at participating stores
Offer expires 6/13/95

Tickets for the Georgia Dome game are on sale now. Call ticket office for details.

The George-Anne Sports

Briefly ...

- GSU announced the hiring of Ken Smith, Sammy Jackson and Stu Brown as men's assistant basketball coaches.
- Swimmer Vanessa Tjouw will return to the Lady Eagles swim team after undergoing laser surgery May 5 in Savannah.
- Pitchers William Rushing and Tod Lee picked up post-season honors. Rushing was named third-team Mizuno Division I All-American. Lee was named Freshman All-American first-team by "Collegiate Baseball Magazine."

Lady Eagles tennis team tops 1994-95

By Jeff Whitten
Sports Editor

The trouble is, there's no easy way to characterize this sports year. You can't rip off a spaghetti western and call it the year when things were good, bad and ugly, or steal a line from Dickens and say it was the best of times and the worst of times.

Nope. Because this year GSU sports were neither particularly good — unless you follow women's tennis or women's swimming — nor terribly bad, until you remember the men's basketball program was rocked by a scandal the likes of which GSU had never before seen.

What this past sports year was about, more than anything else, was mediocrity. The football team fumbled their way to a 6-5 record; GSU's worst since 1941, when the Professors of Georgia Teachers College finished 2-8 against a schedule that featured Mercer, Erskine and Camp Croft.

The women's basketball team fell victim to injuries and academic ineligibility and failed to take the Southern Conference crown for the first time since GSU joined the conference three years ago.

The baseball team, everybody's preseason pick to win the Southern Conference, ran

into a mid-season slump and by the time the smoke of the play-offs cleared found themselves second to The Citadel, and sitting home when the NCAA regional tournaments began.

The volleyball team's record was respectable — they finished 27-11 — until you factor in their conference record. The Lady Eagles could do no better than 8-6. Even the women's swimming team, winners of their seventh straight Southern States championship, no mean feat, finished the season a mediocre 6-5. The men were 7-6, and finished sixth at Southern States.

The Lady Eagle softball team, plagued by shaky defense and an unlikely monsoon season that forced postponement of their first eight games, got beat on a regular basis this year, finishing 17-29 (4-8) in the conference. The Lady Eagles had a resurrection of sorts when they took second — behind Furman — in the conference tournament.

Men's and women's cross country were far down in the conference standings; the men finished 10th, the women eighth.

And then there's soccer. The men were 10-9-2, the women 10-9. Men's tennis, anyone? The Eagles finished the season 10-5 (6-1 in the conference), but had a

rough time of it in the SoCon tournament and finished sixth.

All in all, 1994-95 wasn't a sports year to write home about. So in the end, maybe it's a good thing winning isn't everything.

The Big Three

We're talking football, men's basketball and baseball. And though there will always be fans of other sports who might argue their favorites deserve some sort of consideration, at GSU the big three drive the train. How? By producing revenue. Football, basketball and baseball put more

wit and a gifted coach, the program has gone into a tailspin. Head Coach Tim Stowers won a national championship the year after Russell retired, but with the exception of the 1993 team (10-3, Southern Conference Champions) the Eagles have been only marginally better than average.

And then there was last season, which Athletic Director David "Bucky" Wagner called a disaster. The Eagles started the season a woeful 0-3, bad by GSU standards but made worse perhaps because one of the losses was to Division II's West Georgia. Injuries fell senior quarterbacks Joe Dupree and Charles Bostick, but redshirt-freshman Kenny Robinson took over the quarterbacking duties and performed admirably. The Eagles went 6-2 with Robinson at the helm and entertained playoff hopes until the last game of the season, when SoCon rival The Citadel upset the Eagles 17-15. It was a loss made more galling by VMI's upset of Appalachian State — one of the two things that had to happen for GSU to get into the playoffs (the other was win).

The men's basketball season ended before it really got started when head coach Frank Kerns and two assistants resigned after it became clear the program had violated NCAA rules. Injuries, illness and ineligibility further decimated the Eagles, but they went out with a bang in the

Southern Conference post-season tournament by winning in the first round and taking league power UT-Chattanooga to the wire before losing in the second. Still, the Eagles 8-20 record (3-11 conference) was GSU's worst since 1981.

Baseball was supposed to be different, if you believed the media. Two national baseball magazines picked the Eagles to win the SoCon championship, and early on it looked like the media was right. GSU swept Georgia Tech and split with Georgia and cracked a few top 25 polls in the process; an unfortunate mid-season slump put an end to the Eagles stretch as a nationally ranked team, though by the time the tournament rolled around GSU seemed to be back on track. The Citadel derailed GSU in the tournament.

Women's Tennis: the team of the year

Unofficially, they were the best sports team on campus this year. Coached by Gary Glassman and led by Elizabeth Nieto, the Lady Eagles went through the regular season 14-3, then made history. GSU's female netters swept the SoCon championship tournament, the first time in history that's been done.

And the women's swimming team made a strong case for retaining the Southern States championship trophy in Statesboro when they won their seventh straight.

THE SPECTATOR

JEFF WHITTEN

The Spectator Returns! And look out! He's ... pissed?

Remember Fred Flintstone? The cartoon, not the fat actor.

Why? Because you hardly ever hear people say yabba dabba doo, these days, that's why.

Imagine asking President Henry what he thinks about the proposed pedestrian bike ban and he answers with a hearty, "Yabba dabba doo, bughead. That's what I think about that, I think. Heh-heh. Put that in your pipe and smoke it, how 'bout?"

To take the analogy a small step further, imagine President Henry in 20 years, pattering around campus in a little golf cart, wearing a Fred Flintstone getup and trying to run down outlaw bikers on the pedestrian. Waving a cutlass

.... Yabba dabba doo.

Part two.

"Your liver pays dearly now for youthful magic moments but rock on completely with some brand new components."

from Cake's "Rock and Roll Lifestyle"

The managing editor is bouncing off the walls, blurring out random numbers for no reason he can effectively explain.

Said he had a rough week-end.

Too much of everything. Ah, the wild excesses of youth.

But.

The English call a night of heavy drinking, "getting pissed."

Which reminds me of a column in GSU's other student newspaper.

So maybe said column title is an elaborate joke, and the columnist isn't mad

But mad can also mean insane.

So pissed can either mean drunk or mad, and mad can refer to being upset or it can mean you're nuts.

Hard telling, not knowing. Peace.

IN FOOTBALL

Stephens signs with Rams

By Carolyn Wynn
Staff Writer

Former GSU All-American offensive lineman Franklin Stephens signed a one-year contract with the St. Louis Rams May 24. Stephens, a 6-0, 268-pound guard/center, a four-year starter for the Eagles, finished his eligibility last season. He is eight hours and an internship shy of graduation and said he plans on returning to GSU to finish his coursework.

"This is something you wait a lifetime for," Stephens said. "But the real world and college are different. And as for football, it's not just going out to play ball anymore, it's a business."

The 1994 GSU offensive-team captain will report to the Rams mini-camp next week. The camp will give the Rams the chance to assess Stephens' talent and capabilities. If Stephens does well, he has a chance to earn a spot on the Rams 1995 roster.

"I'm a little nervous," Stephens said. "It will be just like leaving high school for college, leaving

my friends and all I'm used to." Stephens got the opportunity to play for the Rams after changing agents. He was notified the Rams were looking for a center and had requested videotape of

Stephens. The St. Louis offensive line coach was impressed and the Rams offered Stephens a contract.

He said he will take finals before reporting to the Rams.

COLLEGE STUDENTS Full-Time Summer Jobs

Work in the Augusta area with leading national companies. If you are 18 or older and available Mid-May through the summer, then apply with us.

\$200 - \$325/week.



Human Resource Division of MAU, Inc.
(706) 724-8367 • Fax (706) 722-1884

APPLY IN PERSON
501 Greene St.
Augusta, GA 30901

Main Street Self Storage Mini Warehouses



- Self Storage
- Available 24hrs
- Over 270 Units
- Well Lighted
- Economical Rates
- Various Sizes

Main Office
443 S. Main St. • Statesboro
764-5589

Three Convenient Locations:
6 Ed Moore Ct
Brannen St
and South Main St.

At This Price, Our Wings Will Fly.



Nothing Fancy. Just Good Food

120 Lanier Dr. Statesboro, GA
(Across from GSU's Paulson Stadium)
681-3030 • Mon.-Sat.
11:30am-12am • Sun. 11:30am-10pm

Bash Night:

Tues. 6-10:30 pm

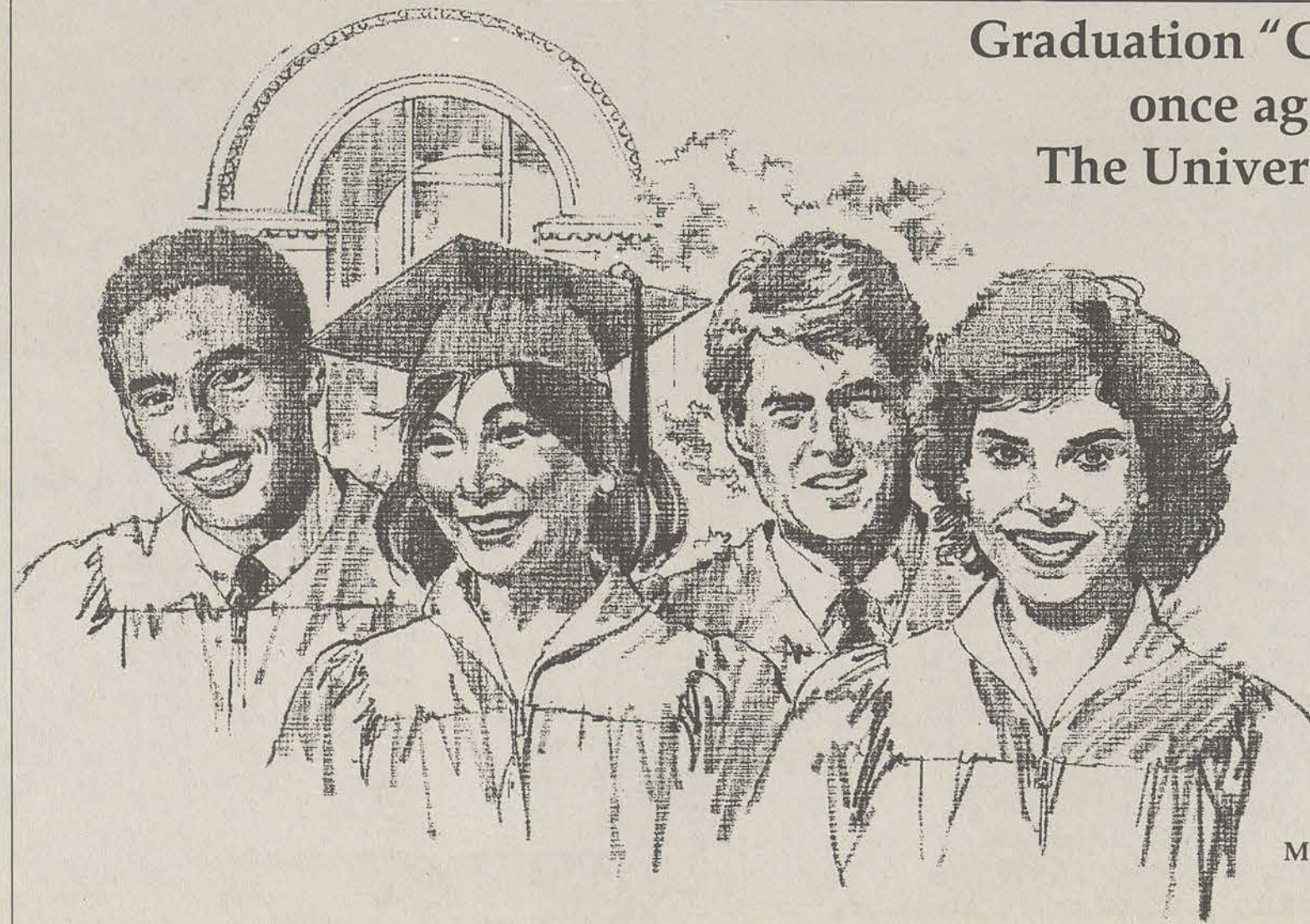
All-U-CAN EAT Wings

- Large patio
- Take-out or Dine-in
- Monthly wing-eating contests

\$6.95

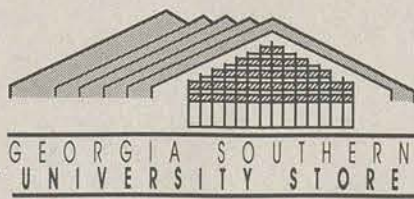
Buy One Lunch Entree Get One Free
Of Equal Or Lesser Value

Coupon valid at this store only. Does not include tax or gratuity. Not valid with any other offer. Exp. 06-10-95.



Graduation "Commences" once again at The University Store

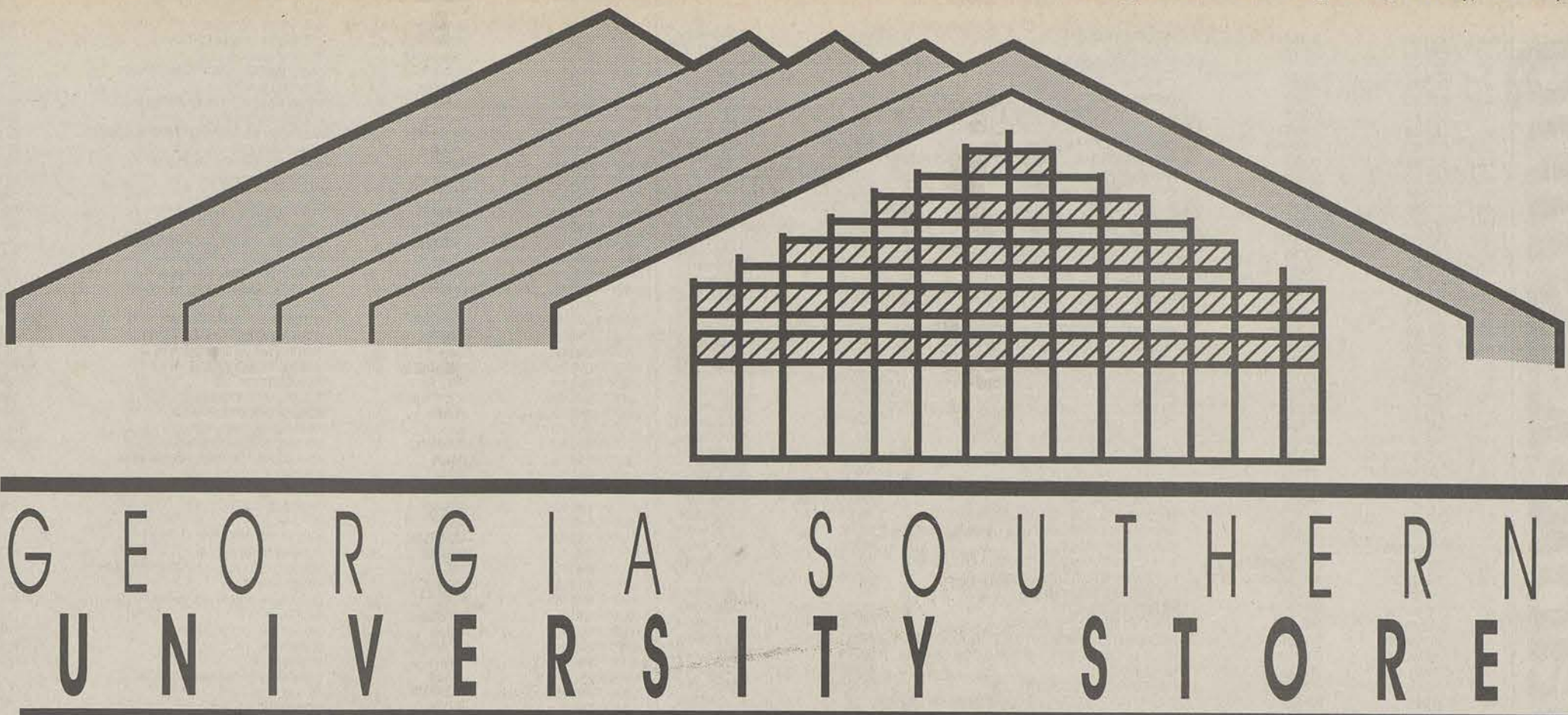
Shirts
Cards
Pens
Sweatshirts
... and more



"Under the Green Roof"
681-5181

Mon. - Thur. 7:45 a.m. - 6:00 p.m.
Fri. 7:45 a.m. - 5:00 p.m.
Sat. 10:00 a.m. - 4:00 p.m.

University Store Spring Quarter Buyback Listing



GEORGIA SOUTHERN
UNIVERSITY STORE

"UNDER THE GREEN ROOF"
PHONE: 912-681-5181

To: Georgia Southern Students:

Below is a listing of textbooks that were used Spring Quarter and will be bought at BUYBACK (May 31 through June 9). This listing is intended to give you, the student, an idea of what you can expect at BUYBACK. Please note the following conditions:

1. Categories are subject to change without notice.
2. Prices paid are subject to quantities needed.
3. Books in poor condition may be rejected at our discretion.
4. Books that have fill-in or tear-out pages generally will not be bought.
5. Some books that are listed as Wholesale will be switched to Half price as they are adopted by the faculty. The information on this list is limited to information we have received from the faculty at press time.

Pricing explanation:

HALF — this means the book will be bought at one half (1/2, 50%) of the new retail price (see condition 2 above). This generally means that the book is being used next quarter.
W — this means the book will be bought by a wholesaler. The prices will vary from 0% to 33% (25% average) of the new retail price. This generally indicates that the book is NOT being used next quarter.
***** — this means the book has fill-in or tear-out pages and may be bought by a wholesaler. These books usually have very little to no value.
****** — this means the book is an old edition. These books usually have no value.

Conditions may change, so please check with us before discarding any of your books.
NOTE: WE ARE UNABLE TO GIVE PRICES OVER THE PHONE.

Buyback	Course	Author	Title	Publisher	ISBN
W	BA 949	WHEELLEN	STRATEGIC MANAGEMENT & BUSINESS POLICY	AW	0-201-15504-4
W	BA 240	SPIEGEL	APPLIED STATISTICS AND STRENGTHS OF MATERIALS	PH	0-02-414961-6
W	BA 251	WOLF	ELEMENTARY SURVIVING	HARPER COLLINS	0-06-500399-3
W	BCC 341	AHLVIN	CONSTRUCTION GUIDE FOR SOILS & FOUNDATIONS	JOHN WILEY & SONS	0-471-80486-X
W	BCC 342	DAOSTINO	ESTIMATING IN BUILDING CONSTRUCTION	PH	0-13-287806-2
W	BCC 350	OLIV	CONSTRUCTION PRINCIPLES, MATERIALS & METHODS	VNR	0-442-00605-5
W	BCC 431	SBCCI	STANDARD BUILDING CODE	SOUTHERN BLDG COD.	0-442-00605-5
W	BE 856	DAUGHTREY	BASIC BUSINESS & ECONOMIC EDUCATION	SW	0-539-80226-8
W	BE 856	SMITH	ELECTRONIC SPREADSHEET APP/FIACC PRINCIPLES	SW	0-539-83285-1
W	BIO 151/152	KRISSINGER	BIOLOGY LAB EXPERIENCES	BURGESS	0-8087-7991-5
W	BIO 151/152	STARR	BIOLOGY UNITY & DIVERSITY OF LIFE	ITP	0-534-16591-5
W	BIO 151/152	STARR	STUDY GUIDE T/A BIOLOGY	ITP	0-534-16599-9
W	BIO 162	CAMPBELL	BIOLOGY	BENJAMIN-CUMMINGS	0-8053-1880-1
W	BIO 162	CAMPBELL	STUDY GUIDE T/A BIOLOGY	BENJAMIN-CUMMINGS	0-8053-1881-X
W	BIO 162	MORGAN	INVESTIGATING BIOLOGY	BENJAMIN-CUMMINGS	0-8053-1830-5
W	BIO 165	RAVEN	ENVIRONMENT	SAUNDERS	0-03-010588-9
W	BIO 271	DONNELLY	LAB MANUAL F/ANATOMY & PHYSIOLOGY WCAT DISEC.	HC	0-06-500903-7
HALF	BIO 271/272	TORTORA	PRINCIPLES OF ANATOMY & PHYSIOLOGY	HC	0-06-046702-9
HALF	BIO 271/272	TORTORA	STUDY GUIDE T/A PRINCIPLES OF ANATOMY	HC	0-06-501197-X
W	BIO 281	HICKMAN	LAB STUDIES IN ANIMAL DIVERSITY	WC BROWN	0-697-25373-2
HALF	BIO 281	HICKMAN	ANIMAL DIVERSITY	WC BROWN	0-697-24228-5
W	BIO 281	WINGBERG	RAT DISSECTION MANUAL	JOHN HOPKINS PRESS	0-8113-33294-0
W	BIO 281	RUST	GUIDE TO BIOLOGY LAB	SOUTHWESTERN ED.	0-937029-01-7
W	BIO 282	DEAN	BIOLOGY OF PLANTS: LAB EXERCISES	WC BROWN	0-697-00644-1
W	BIO 282	RUST	GUIDE TO BIOLOGY LAB	SOUTHWEST	0-937029-01-7
W	BIO 282	STERN	INTRODUCTORY PLANT BIOLOGY	WC BROWN	0-697-13714-7
W	BIO 284	SENSON	MICROBIOLOGICAL APPLICATIONS (SHORT)	WCBROW	0-697-13764-3
W	BIO 284	TORTORA	MICROBIOLOGY	AW	0-8053-8496-0
W	BIO 353	GILL	ORNTHOLOGY	FREEMAN	0-7176-2415-4
W	BIO 353	PETERSON	FIELD GUIDE TO BIRD SONGS	HM	0-395-53150-0
HALF	BIO 353	PETERSON	FIELD GUIDE TO BIRDS	BENJ/CUMMINGS	0-395-26619-X
W	BIO 370	BECKER	WORLD OF THE CELL	BENJ/CUMMINGS	0-8053-0870-9
W	BIO 381	RUPPERT	INVERTEBRATE ZOOLOGY	HBC	0-03-026668-8
W	BIO 454/454	BORROR	FIELD GUIDE TO INSECTS	HM	0-395-18523-8
HALF	BIO 454/654	ROMOSER	SCIENCE OF ENTOMOLOGY	WC BROWN	0-697-03349-X
W	BIO 464	PETERSON (CONANT)	FIELD GUIDE TO AMPHIBIANS & REPTILES	HM	0-395-58389-6
W	BIO 464	ZUG	HERPETOLOGY AN INTRODUCTION	HBC	0-12-782820-3
W	BIO 473/673	BREWER	SCIENCE OF ECOLOGY	SAUNDERS COLLEGE	0-03-096575-6
W	BIO 564/764	MOORE-LANDECKER	FUNDAMENTALS OF FUNGI	PH	0-13-332941-0
W	BIO 599/799	CONNOR	ESSENTIAL MEDICAL GENETICS	BLACKWELL SCI PUB	0-632-03228-6
W	BIO 852	RAFORD	MANUAL OF THE VASCULAR FLORA	UNC PRESS	0-8078-1087-8
W	BIO 852	SMITH	VASCULAR PLANT FAMILIES	MAD RIVER PRESS	0-916422-11-9
W	BIO 599/799	SMITH	NEW HUMAN GENETICS	WCB	0-697-03779-7
W	CA 252	HIEBERT	MASS MEDIA II	AW	0-8013-0453-9
W	CA 252	GAMBLE	COMMUNICATION WORKS	WCBROW	0-07-022793-4
W	CA 254	VAN RIPER	INTRO. TO GENERAL AMERICAN PHONETICS	WAVELAND PRESS	0-88133-671-8
W	CAB 340	LYLE	DEMYSTIFYING MEDIA TECHNOLOGY	MAYFIELD	1-5594-145-9
W	CAB 340	LYLE	COMMUNICATION, MEDIA AND CHANGE	MAYFIELD	0-87484-935-7
W	CAB 444	ZETTL	VIDEO BASICS	WADSWORTH	0-534-24786-5
W	CAB 444	ZETTL	VIDEO BASICS WORKBOOK	ITP	0-534-24788-1
HALF	CAB/CAJ 446	BIAGI	INTERVIEWS THAT WORK	WADSWORTH	0-534-15966-4
W	CAB/CAJ 446	SHOOK	BROADCAST NEWS PROCESS	MORTON	0-89582-235-0
W	CAB/CAJ 447	MATRAZZO	CORPORATE SCRIPTWRITING BOOK	COMMUNICON PUB	0-932617-07-7
W	CAB/CAJ 447	MEESKE	COPYWRITING FOR THE ELECTRONIC MEDIA	WADSWORTH	0-534-15624-X
W	CAF 350	BONE	UNDERSTANDING THE FILM	NTC	0-8442-5694-3
W	CAF 351	JACOBS	DOCUMENTARY TRADITION	NORTON	0-393-95042-5
HALF	CAJ 252	ASSOC PRESS	ASSOCIATED PRESS STYLEBOOK & LIBEL MANUAL	ASSOC PRESS	0-91760-10-9
W	CAJ 252	HUTCHISON	WRITING FOR MASS COMMUNICAITON	AW	0-582-29033-3
W	CAJ 343	GOLDSTEIN	ASSOCIATED PRESS STYLEBOOK & LIBEL MANUAL	AW	0-201-62704-3
W	CAJ 343	MENCHER	NEWS REPORTING & WRITING	WCBROW	0-697-13535-2
W	CAJ 343	MENCHER	WORKBOOK T/A NEWS REPORTING AND WRITING	WCB	0-697-13535-2
W	CAJ 442	KEIR	ADVANCED REPORTING BEYOND NEWS EVENTS	WAVELAND PRESS	0-88133-591-6
W	CAJ 445	GARRISON	PROFESSIONAL FEATURE WRITING	EARLBALUM	0-8058-1477-9
W	CAP 340	WILCOX	PUBLIC RELATIONS: STRATEGIES & TACTICS	HARPER COLLINS	0-06-500100-1
W	CAP 342	NEWSOM	PUBLIC RELATIONS WRITING	WADSWORTH	0-534-25500-0
HALF	CAP 440	CENTER	PUBLIC RELATIONS PRACTICES	PRENTICE HALL	0-13-098153-2
W	CAP 440	KENDALL	PUBLIC RELATIONS CAMPAIGN STRATEGIES	HC	0-06-043645-X
W	CAP 445	STACKS	ESSENTIALS OF COMMUNICATION RESEARCH	HC	0-06-044204-3
HALF	CAS 251	CAMPBELL	RHETORICAL ACT	WADS	0-534-01008-3
W	CAS 251	GRONBECK	PRINCIPLES OF SPEECH COMMUNICATION BRIEF	HC	0-673-46508-X
W	CAS 251	GEYERMAN	COMMUNICATING IN PUBLIC	KH	0-8403-8172-7
W	CAS 251	LUCAS	ART OF PUBLIC SPEAKING	MCGRW HILL	0-07-039015-0
W	CAS 251	LICAS	ART OF PUBLIC SPEAKING	MCGRW HILL	0-07-039015-0
W	CAS 341	HUNT	RIVERSIDE ANTHOLOGY OF LIT	HM	0-395-47285-7
W	CAS 341	PELIAS	PERFORMANCE STUDIES	SMP	0-312-04732-0
W	CAS 342	CATHCART	SMALL GROUP COMMUNICATIONS	WCBROW	0-697-08844-5
W	CAS 345	LARSON	PERSUASION	ITP	0-534-23070-9
W	CAS 346	STEWART	TOGETHER	MCGH	0-07-061539-X
W	CAS 346	STEWART	BRIDGES NOT WALLS	MCGH	0-07-061539-X
W	CAS 349	PEARSON	GENDER & COMMUNICATION	WCB	0-226-30778-6
W	CAT 252	TANNEN	YOU JUST DONT UNDERSTAND	BALANTINE	0-345-3205-0
W	CAS 399	MOORES	INTERPRETING AUDIENCES	SAGE	0-8039-8447-2
W	CAS 399	JENKINS	TEXTUAL POACHERS	ROUTLEDGE	0-415-90572-9
HALF	CAS 443	MORAIN	BRIDGING WORLDS THROUGH GENERAL SEMANTICS	ISGS	0-916970-34-2
W	CAS 448	PACE	ORGANIZATIONAL COMMUNICATION	PH	0-13-648000-8
W	CAS/CAT/SOC 399	KRAMER	NORMAL HEART	NAL	0-452-25798-0
W	CAS/CAT/SOC 399	HOOPES	ORAL HISTORY	UNC PRESS	0-8078-1344-3
W	CAS/CAT/SOC 399	SMITH	TWILIGHT LOS ANGELES 1992	ANCHOR	0-385-43736-1
W	CAT 257	BROCKETT	ESSENTIAL THEATRE	HBC	0-03-055353-9
W	CAT 257	COHEN	TWELVE PLAYS FOR THEATRE	MAYFIELD	1-5594-1444-0
W	CAT 257	ALLISON	MASTERPIECES OF THE DRAMA	MACMILLAN	0-02-301975-1
W	CAT 342	EURIPIDES (GRENE)	EURIPIDES V	U CHICAGO PRESS	0-226-30784-0
HALF	CAT 342	EURIPIDES	EURIPIDES III FOUR TRAGEDIES	U CHICAGO PRESS	0-226-30782-4
W	CAT 342	AESCHYLUS (LATTIMORE)	AESCHYLUS I	U CHICAGO PRESS	0-226-30778-6
W	CAT 342	GASSNER	MEDIEVAL AND TUDOR DRAMA	AUSE	0-395-88184-8
W	CAT 342	HARSH	ANTHOLOGY OF ROMAN DRAMA	HBC	0-03-028615-9
W	CAT 352	SOPOCLES (GRENE)	SOPOCLES I	U CHICAGO PRESS	0-226-30792-1
W	CAT 352	WICKHAM	HISTORY OF THE THEATRE	CAMBRIDGE	0-521-43733-4
W	CAT 422	BRANCH	BLACK THUNDER: AN ANTHOLOGY OF CONTEMPORARY PENCIL BOOKS	FOCAL PRESS	0-451-62844-6
W	CAT 422	MILLERSON	LIGHTING FOR DRAMA	FOCAL PRESS	0-240-51303-7
W	CAT 422	PECKALT	DESIGNING & WRITING FOR THE THEATRE	MCGRW	0-07-557232-X
W	CAT 557/757	CATRON	PLAYWRITING, WRITING, PRODUCING, SELLING PLAYS	WAVELAND	0-88133-564-9

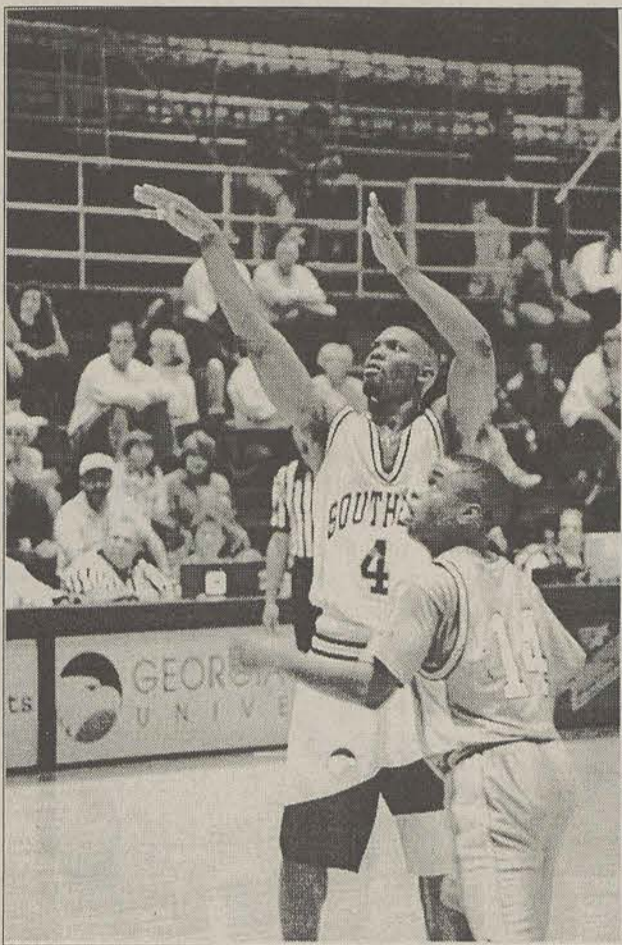
University Store Spring Quarter Buyback Listing

HALF CED 591	BLUMING	RESIDENT ASSISTANT	KH	0-8403-8828-4	W	ENG 151	AXELROD	ST. MARTIN'S GUIDE TO WRITING	ST. MARTINS	0-312-07541-3
W CED 591	HUGHES	LEADERSHIP	IRWIN	0-256-10278-3	HALF	ENG 151	NADELL	MACMILLAN PWB	MACMILLAN PUB	0-02-35882-6
W CED 791		QUICK REFERENCE DIAGNOSTIC CRITERIA FIDSM-IV	AM PSYCH	0-89042-063-7	W	ENG 151	KENNEDY	BRIEF BEDFORD READER	SMP	0-312-08636-9
W CED 791	LEWIS	COMMUNITY COUNSELING	ITP	0-534-10248-4	HALF	ENG 151	PATON	CRY THE BELOVED COUNTRY	S&S	0-02-051910-9
HALF CED 852	COREY	THEORY & PRACTICE OF COUNSEL & PSYCHOTHERAPY	ITP	0-534-13314-2	W	ENG 151	HEMINGWAY	OLD MAN AND THE SEA		
HALF CED 852	COREY	MANUAL TIA THEORY & PRACTICE COUNSEL & PSYCH	ITP	0-534-13316-9	W	ENG 151	KESEY	ONE FLEW OVER THE CUCKOO'S NEST		
HALF CED 853	ZUNKER	CAREER COUNSELING APPLIED CONCEPTS	GORSUCH	0-534-21205-0	W	ENG 151	KENNEDY	BEDFORD READER	ST MARTINS	0-312-08637-7
HALF CED 853	SUKIENNIK	CAREER FITNESS PROGRAM	ITP	0-534-21205-0	W	ENG 151	KIRSZNER	PATTERNS FOR COLLEGE WRITING	SMP	0-312-04834-3
HALF CED 855	COREY	CASE APPROACH TO COUNSELING & PSYCHOTHERAPY	ITP	0-534-13782-2	W	ENG 151	HACKER	POCKET STYLE MANUAL	SMP	0-312-11494-X
HALF CED 863	CARKHUFF	ART OF HELPING VII	HUMAN RES DEV PRES	0-87425-231-8	W	ENG 151	NORDQUIST	PASSAGES: A BEGINNING WRITER'S CONIDE	ST MARTINS PRESS	0-312-03215-3
W CED 863	EGAN	EXERCISES IN HELPING SKILLS	ITP	0-534-21226-6	W	ENG 151	JACOBS	WORLD OF IDEAS	ST MARTINS PRESS	0-312-08535-4
HALF CED 863	EGAN	SKILLED HELPER	ED MEDIA	0-932796-53-2	HALF	ENG 151	HUXLEY	BRAVE NEW WORLD		
HALF CED 894	MYRICK	DEV/GUIDANCE & COUNSELING	MACMILLAN	0-02-303020-8	HALF	ENG 151	PAYNE	LIVELY ART OF WRITING	MENTOR	0-451-62712-1
HALF CED/EDP 862	ANASTASI	PSYCHOLOGICAL TESTING	PH	0-8359-2829-2	HALF	ENG 151	ORWELL	1984	SIGNET	0-451-52493-9
W CET 343	DAVIS	HIGHWAY MATERIALS SOILS AND CONCRETES	MCGRAW HILL	0-07-015911-4	W	ENG 151	KIRSZNER	BLAIR READER	PRENTICE HALL	0-13-085325-9
W CET 343	MOFFITT	INTRO TO ENVIRONMENTAL ENGINEERING	HC	0-06-500059-5	W	ENG 151	KINGSOLVER	ANIMAL DREAMS	HC	0-06-092114-5
W CET 364	AISC	MANUAL OF STEEL CONSTRUCTION LRFD VOL 1	AISC	1-56424-001-0	HALF	ENG 151	LEQUIN	JAY LUCK CLUB	BALLANTINE	0-8041-0630-4
W CET 364	MCORMAC	STRUCTURED STEEL DESIGN LRFD METHOD	HARPER COLLINS	0-06-044346-4	W	ENG 151	SALINGER	CATCHER IN THE RYE		
W CET 399	AMRHEIN	REINFORCED MASONRY ENGINEERING HANDBOOK	MASONRY INSTAM	0-940116-20-0	HALF	ENG 151	TARVER	WOMEN AND MEN	HARPER COLLINS	0-06-501124-4
W CET 399	BREYER	DESIGN OF WOOD STRUCTURES	MCGRAW	0-07-007678-2	HALF	ENG 151	SKWIRE	WRITING WITH A THESIS	HBC	0-03-079101-2
W CET 452	KHISTY	TRANSPORTATION ENGINEERING	PH	0-13-929274-8	HALF	ENG 151	RUBENSTEIN	WORLDS OF FICTION	MACMILLAN	0-02-040185-8
W CET 455	MCQHEE	WATER SUPPLY AND SEWERAGE	MCGRAW HILL	0-07-060938-1	HALF	ENG 151	SHELLEY	FRANKENSTEIN	SMP	0-312-04469-0
HALF CHE 171	SEAGER	INTRO. CHEMISTRY FOR TODAY	WEST	0-314-02522-7	HALF	ENG 151	ROTTENBERG	ELEMENTS OF ARGUMENT	SMP	0-312-08640-7
HALF CHE 171/172	SEAGER	SG & SOLUTIONS MANUAL FINTRO. CHEMISTRY	WEST PUB	0-314-02854-4	HALF	ENG 151	STRUNK	ELEMENTS OF STYLE	PH	0-02418200-1
HALF CHE 172	EBBING	ORGANIC AND BIOCHEMISTRY FOR TODAY	HM	0-395-63697-3	W	ENG 151	WALKER	WRITING RESEARCH PAPERS	PH	0-393-95943-0
HALF CHE 181/182/183	EBBING	STUDY GUIDE FOR GENERAL CHEMISTRY	HM	0-395-61353-1	W	ENG 151	RUGGIERO	WRITING: INVITATION & RESPONSE	NORTON	0-393-02089-6
HALF CHE 181/182/183	EBBING	GENERAL CHEMISTRY	STAFF	0-395-63701-5	HALF	ENG 151	TWAIN	ADVENTURES OF HUCKLEBERRY FINN		
HALF CHE 363	SKOOG	STUDENT SOLUTIONS MANUAL	SAUNDERS HBC	0-03-023343-7	HALF	ENG 151/152	TROYKA	HANDBOOK FOR WRITERS	PH	0-13-813767-6
W CHE 373	WADE	PRINCIPLES OF INSTRUMENTAL ANALYSIS	PRENTICE HALL	0-13-642588-7	HALF	ENG 152	CHOPIN	AWAKENING	NORTON	0-393-96057-9
W CHE 373	WADE	ORGANIC CHEMISTRY	PRENTICE HALL	0-13-643362-6	W	ENG 152	CONROY	PRINCE OF TIDES	BANTAM	0-553-28888-0
W CHE 373	SHRINER	SOLUTIONS MANUAL FOR ORGANIC CHEMISTRY	WILEY	0-471-78874-0	HALF	ENG 152	DIELH	27	BALLANTINE	0-345-37073-2
W CHE 373/378	SHRINER	SYSTEMATIC IDENTIFICATION OF ORGANIC COMPOUND	HEALTH	0-669-12662-4	HALF	ENG 152	ANDERSON	WINESBURG OHIO		
HALF CHE 377/378	SOLOMONS	ORGANIC EXPERIMENTS	WILEY	0-471-59546-0	W	ENG 152	GREENE	THIRD MAN/FALLEN IDOL	PENGIN	0-14-018533-X
HALF CHE 377/378	SOLOMONS	SG & SOLUTIONS MANUAL FOR FUND. OF ORGANIC	WILEY	0-471-59897-X	W	ENG 152	BIDDLE	READING, WRITING, AND THE STUDY OF LIT.	RANDOM HOUSE	0-07-563538-6
HALF CHE 380	SEAGER	FUNDAMENTALS OF ORGANIC CHEMISTRY	WEST	0-314-02854-4	W	ENG 152	COOBY	WATER IS WIDE	BANTAM	0-553-26893-7
W CHE 554/754	MESSLER	ORGANIC AND BIOCHEMISTRY FOR TODAY	PRENTICE-HALL	0-13-466559-8	HALF	ENG 152	COOPER	STRUCTURE & MEANING: INTRO. TO LIT.	HOUGHTON MIFFLIN	0-395-32570-6
W CHE 583/783	DYKSTRA	INTRO. TO QUANTUM CHEMISTRY	PRENTICE-HALL	0-13-701293-4	HALF	ENG 152	COOPER	MATTER OF LIFE	DOUBLEDAY	0-385-41174-X
W CHE 588/788	MORAN	BIOCHEMISTRY & PROBLEMS & SOLUTIONS GUIDE	PRENTICE-HALL	0-13-323908-X	W	ENG 152	ANNAS	LITERATURE AND SOCIETY	PRENTICE HALL	0-13-532904-3
W CINEMA ARTS	CONRAD	HEART OF DARKNESS THRIFT ED	DOVER	0-486-26464-5	W	ENG 152	CHURCHILL	CLOUD NINE	ROUTLEDGE	0-415-90135-9
W CINEMA ARTS	ATWOOD	HANDMAID'S TALE	FAWCETT	0-449-21260-2	HALF	ENG 152	DIELH	PRIMAL FEAR	BALLANTINE	0-345-38877-1
HALF CINEMA ARTS	WADE-GAYLES	PUSHED BACK TO STRENGTH	BEACON	0-380-72426-X	HALF	ENG 152	GAINES	GATHERING OF OLD MEN		
W CIS 251	PARKER	UNDERSTANDING COMPUTERS & INFORMATION PROCESS	DRYDEN	0-7895-0359-X	HALF	ENG 152	FAULKNER	AS I LAY DYING		
0-03-097906-4					HALF	ENG 152	BRONTE	WUTHERING HEIGHTS	HEATH	0-669-24407-4
W CIS 251	SMITH	MICROCOMPUTER APPLICATIONS LOTUS SMARTSUITE	ITP	0-7895-0359-X	HALF	ENG 152	DEROCHE	HEATH INTRO TO POETRY		
HALF CIS 381	PICKETT	PASCAL PROGRAMMING FOR INFORMATION SYSTEMS	BOYD & FRASER	0-87835-503-0	HALF	ENG 152	BALDWIN	IF BEALE STREET COULD TALK		
HALF CIS 382	STERN	STRUCTURED COBOL PROGRAMMING	WILEY	0-471-59747-3	W	ENG 152	DEWITT	CLOSE IMAGINING: AN INTRO. TO LIT.	ST MARTIN'S	0-312-00336-6
W CIS 488	PRATT	DATABASE SYSTEMS MANAGEMENT & DESIGN	ITP	0-87709-115-3	W	ENG 152	ABACARIAN	LITERATURE: THE HUMAN EXPERIENCE	ST. MARTIN'S PRESS	0-312-08408-0
W CIS 488	KOCH	ORACLE	MCGRAW HILL	0-07-882097-9	HALF	ENG 152	GRIFFITH	WRITING ESSAYS ABOUT LITERATURE	HARCOURT	0-15-500175-1
W CIS 596	CASE	MANAGING LOCAL AREA NETWORKS	MCGRAW HILL	0-07-052925-X	HALF	ENG 152	AUSTEN	PRIDE AND PREJUDICE	BANTAM	0-553-21310-5
W CLOSER LOOK MS-DOS	FLYNN	10 MINUTE GUIDE TO MS-DOS 6.2	MAC	1-56761-416-7	W	ENG 152	MCMAHAN	LITERATURE AND THE WRITING PROCESS	MACMILLAN	0-02-397975-3
W CLOSER LOOK WINDOW		BARNES	10 MINUTE GDE TO WINDOWS 3.1	MAC	1-56761-416-7	W	ROBERTS	WRITING ABOUT LITERATURE	HARPER COLLINS	0-673-52280-6
MACMILLAN COMPUTER	0-672-30052-4				HALF	ENG 152	KENNEDY	LITERATURE: INTRO. TO FICTION, POETRY, DRAMA	RANDOM	0-679-72181-9
HALF CSC 230	SCHNEIDER	QBASIC WITH AND INTRO. TO VISUAL BASIC W/DISK	MACMILLAN	0-02-407734-8	HALF	ENG 152	NAYLOR	LITERATURE: AN INTRO. TO READING & WRITING	PRENTICE HALL	0-13-097510-9
HALF CSC 232	NYHOFF	FORTRAN 77 FOR ENGINEERS AND SCIENTISTS	MACMILLAN	0-02-388655-2	HALF	ENG 152	MARTZ	IF I HAD MY LIFE TO LIVE OVER, I WOULD PICK	PAPIER MACHE	0-918949-24-6
HALF CSC 281/283	SHIFLET	PROBLEM SOLVING IN C W/BREADTH & LABS	WEST	0-314-04554-6	W	ENG 152	MCKEAGUE	STEP BY STEP WRITING ABOUT LITERATURE	K/H	0-8403-7185-3
W CSC 285	HORN	COMPREHENSIVE STRUCTURED COBOL W/DISK	ITP	0-87709-888-3	W	ENG 152	KENNEDY	LITERATURE - COMPACT EDITION	HC	0-673-52415-9
W CSC 351	LINZ	INTRO. TO FORMAL LANGUAGE & AUTOMATA	DC HEATH	0-669-17342-8	W	ENG 152	HARLING	STEEL MAGNOLIAS	DRAMA PLAY	0-8222-1078-9
W CSC 365	CLEMENTS	68000 FAMILY ASSEMBLY LANGUAGE	PWS PUBLISHING	0-534-93275-4	HALF	ENG 152	MEYER	BEDFORD INTRODUCTION TO LITERATURE	ST MARTINS	0-312-06549-6
W CSC 464	BUDD	INTRO TO OBJECT-ORIENTED PROGRAMMING	AW	0-201-54709-0	HALF	ENG 152	PERKINS	CONTEMPORARY AMERICAN LITERATURE	MCGRAW	0-07-554954-9
W CSC 482/682	TANENBAUM	MODERN OPERATING SYSTEMS	PRENTICE HALL	0-13-588187-0	HALF	ENG 152	PERKINS	ZEN AND THE ART OF MOTORCYCLE MAINTENANCE		
W CSC 555/755	SHELLY	COMPUTER PACKAGE-DOS 3.5, QPRO 5, WP 6	BOYD AND FRASER	0-877-09913-8	HALF	ENG 152	PERRINE	LITERATURE: STRUCTURE, SOUND, & SENSE	HARCOURT BRACE	0-15-551070-3
W CSC 555/755	SHELLY CASHMAN	DBASE V	ITP	0-877-09913-8	HALF	ENG 152	IBSEN	AN ENEMY OF THE PEOPLE	OXFORD	0-19-281818-X
W CSC 568/768	CONGER	NEW SOFTWARE ENGINEERING	WADSWORTH PUB	0-534-17143-5	HALF	ENG 152	MORRISON	SONG OF SOLOMON	SMP	0-312-05254-5
W CSC 883	HWANG	ADVANCED COMPUTER ARCHITECTURE	MCGRAW HILL	0-07-391622-8	HALF	ENG 152	HACKER	WRITERS REFERENCE	HM	0-395-47285-7
W CSC 890	STEVENS	UNIX NETWORK PROGRAMMING	PRENTICE HALL	0-13-949876-1	W	ENG 152	HUNT	RIVERSIDE ANTHOLOGY OF LIT.	MACMILLAN	0-02-82301-2
HALF CLR 851	ORNSTEIN	CURR. FOUNDATIONS: PRINCIPLES, AND THEORY	ALLEN & BACON	0-205-11415-5	W	ENG 152	KEATING	LIVES THROUGH LITERATURE	HARPER & ROW	0-06-091650-8
HALF CLR 851	NOODINGS	CHALLENGE TO CARE IN SCHOOLS	TEACHERS COLLEGE	0-8077-3177-3	W	ENG 152	HURSTON	THEIR EYES WERE WATCHING GOD	HARPER COLLINS	0-06-501538-X
HALF CLR 851	LOUISSTREET	CURRICULUM FOR A NEW MILLENNIUM	PH	0-205-13966-3	W	ENG 152	HENDERSON	LITERATURE AND OURSELVES	FAWCETT	0-449-90748-1
W CLR 851	WILSE	CURRICULUM DEVELOPMENT	MERRILL	0-02-427631-6	W	ENG 152	SMILEY	THOUSAND ACRES	BANTAM	0-553-21301-6
W CLR 851	SEARS	TEACHING AND THINKING ABOUT CURRICULUM	TEACHERS COLLEGE	0-8077-2968-X	W	ENG 152	SHAKESPEARE	MUCH ADO ABOUT NOTHING	BANTAM	0-553-21301-6
W CLR 850	SHAPIRO	CRITICAL SOCIAL ISSUES IN EDUCATION	LONGMAN PUB	0-8013-0950-6	HALF	ENG 152	SHAKESPEARE	OTHELLO	HARCOURT BRACE	0-15-604762-4
W EC 437	SEBRANEK	WRITE SOURCE 2000	WHITEHURST & CLARK	0-939045-79-6	HALF	ENG 152	WARREN	ALL THE KING'S MEN	BANTAM	0-553-27253-5
W EC 453	TURNER	EXPECTATIONS OF EXCELLENCE/BU 890094	PH	0-205-14190-0	W	ENG 152	WHEEL	ADVENTURES HUCKLEBERRY FINN	U CAL PRESS	0-200-05520-9
HALF EC 453	ELIASON	ESSENTIALS OF CLASSROOM TEACHING SOC STUDIES	MACMILLAN	0-02-322223-3	W	ENG 152	SHAW	PYGMALION	POCKET BOOKS	0-671-70496-6
HALF EC 454	AASA	PRACTICAL GUIDE TO EARLY CHILDHOOD CURRICULUM	AASA	0-87652-184-7	HALF	ENG 152	WILLIAMS	IMMORTAL POEMS OF THE ENGLISH LANGUAGE	POCKET BK	0-711-49610-7
HALF EC 454	AASA	NONGRADED PRIMARY	DELL	0-440-21907-8	HALF	ENG 152	WESTERMAN	LITERATURE: AN INTRO. TO CRITICAL READING	HBJ	0-03-046914-7
W EC 455	LOWRY	GIVER	PRENTICE HALL	0-02-420852-3	W	ENG 152	TAN	JOY LUCK CLUB	IVY	0-8041-0630-4
W EC 455	TOMPKINS	LANGUAGE ARTS: CONTENT & TEACHING STRATEGIES	NAT. COUN. TEAC MA	0-87353-241-4	HALF	ENG 152	TAN	KIT CHEN GOD'S WIFE	SIGNET	0-451-16778-3
HALF EC 457	CHARLES	HOW TO EVALUATE PROGRESS IN PROBLEM SOLVING	ITP	0-534-21409-6	HALF	ENG 152	WILLIAMS	STREETCAR NAMED DESIRE	BANTAM	0-553-34325-4
HALF EC 457	KENNEDY	GUIDING CHILDREN'S LEARNING OF MATHEMATICS	NAEYC	0-935989-11-0	HALF	ENG 152	WOLFF	BACK IN THE WORLD		
HALF EC 460	BREDEKAMP	DEV APPROPRIATE PRACTICE IN EARLY CHILD PROG	MACMILLAN	0-675-21327-4	HALF	ENG 152	STEINBECK	OF MICE AND MEN	INDIANA UNV PRESS	0-253-20001-6
HALF EC 460	KOSTELICK	DEVELOPMENTALLY APPROP. PROGRAMS IN EARLY	DC HEATH	0-669-34960-7	HALF	ENG 152	OVID	METAMORPHOSES	OXFORD UNV PRESS	0-19-282708-1
HALF EC 461	ORLICH	TEACHING STRATEGIES	TEACHING INC.	0-961-45740-6	HALF	ENG 251	HOWATSON	CONCISE OXFORD COMPANION TO CLASSICAL LIT.	NORTON	0-393-96346-2
HALF EC 462	STEMMARK	MANAGING TO TEACH	PHI DELTA KAPPA	0-87367-291-7	HALF	ENG 251	MACK	NORTON ANTHOLOGY WORLD MASTERPIECES VOL.1	MENTOR	0-451-62803-9
HALF EC 462	CUMMINGS	PORTFOLIO APPROACH TO ASSESSMENT FASTBACK 341	PHI DELTA KAPPA	0-87367-291-7	W	ENG 251	METZGER	OXFORD COMPANION TO THE BIBLE	OXFORD UNV PRESS	0-19-504645-5
HALF EC 462	GRADY	PREPARING STUDENTS FOR TAKING TESTS 291	ASCO	0-87120-154-2	W	ENG 251	ZIMMERMAN	DICTIONARY OF CLASSICAL MYTHOLOGY	BANTAM	0-553-25778-5
HALF EC 462	CURWIN	DISCIPLINE WITH DIGNITY	RANDOM HOUSE	0-394-75634-7	HALF	ENG 251	WILKIE	LITERATURE OF THE WESTERN WORLD VOL I	MACMILLAN	0-02-427826-4
HALF EC 462	ELKIND	MISSEDUCATION: PRESCHOOLERS AT RISK	ADDISON WESLEY	0-201-07397-8	HALF	ENG 251	MACK	NORTON ANTHOLOGY WORLD MASTERPIECES VOL.1	NORTON	0-393-96346-2
W EC 462	ELKIND	HURRIED CHILD	ADDISON WESLEY	0-201-71379-1</						

W	MUS 491	HYLTON	COMPREHENSIVE CHORAL MUSIC EDUCATION	PH	0-13-045287-4
HALF	NFS 151	AHEA	HANDBOOK OF FOOD PREPARATION	KENDALLHUNT	0-8403-8670-2
W	NFS 251	BENNING	INTRODUCTORY FOODS	PRENTICE HALL	0-02-308191-0
W	NFS 252	BOYLE	PERSONAL NUTRITION	WEST PUB	0-314-93333-6
W	NFS 352	CATALDO	NUTRITION AND DIET THERAPY	KENDALLHUNT	0-8403-8670-2
W	NFS 352	AHEA	HANDBOOK OF FOOD PREPARATION	KENDALLHUNT	0-8403-8670-2
W	NFS 352	SMITH	YOUR FIRST TABLE	SUE SMITH	0-8016-6477-2
W	NFS 354	WILLIAMS	NUTRITION THROUGHOUT LIFE CYCLE	LEA & FEBIGER	0-8121-1386-1
W	NFS 451	HOLLI	COMMUNICATION & EDUCATION SKILLS	WILEY	0-471-59301-X
W	NFS 457	GISSELEN	PROFESSIONAL COOKING	VNR	0-442-23980-7
W	NFS 467	SPLAVER	SUCCESSFUL CATERING	FA DAVIS	0-8036-5332-6
W	NFS 851	BENARDOT	SPORTS NUTRITION	MOSEBY	0-8016-7895-1
W	NUR 252	KUHN	PHARMACOTHERAPEUTICS: NURSING PROCESS	MOSEBY	0-8016-7895-1
W	NUR 252	RICHARDSON	MATHEMATICS OF DRUGS AND SOLUTIONS	AW	0-8053-5480-8
HALF	NUR 330	HALES	INVITATION TO HEALTH	SAUNDERS	0-7216-6684-1
W	NUR 330	ARNOLD	INTERPERSONAL RELATIONSHIPS	SAUNDERS	0-7216-6684-1
W	NUR 331/341	BETZ	FAMILY CENTERED NURSING CARE OF CHILDREN	LIPPINCOTT	0-397-54831-1
W	NUR 331/341	FISCHBACH	MANUAL OF LABORATORY & DIAGNOSTIC TESTS	AW	0-8053-5580-4
W	NUR 331/341	OLDS	MATERNAL NEWBORN NURSING	MOSEBY	0-8016-7880-3
W	NUR 331/341	SEIDEL	MOSEBY'S GO TO PHYSICAL EXAMINATION	DAVIS	0-8036-0574-9
W	NUR 331	BALDWIN	DAVIS MANUAL CRITICAL CARE THERAPEUTICS	BLACKWELL SCIENCE	0-86542-161-7
W	NUR 331/355	BLOWERS	HOW TO READ AN EKG	MOSEBY	0-8151-6547-1
W	NUR 331/355	OTTO	POCKET GUIDE TO ONCOLOGY NURSING	MOSEBY	0-397-54000-0
W	NUR 447	NIGHTINGALE	NOTES ON NURSING	MOSEBY	0-8016-6954-5
W	NUR 447	MCCLOSKEY	CURRENT ISSUES IN NURSING	LIPPINCOTT	0-486-22340-X
W	NUR 447	NIGHTINGALE	NOTES ON NURSING	LIPPINCOTT	0-486-22340-X
W	NUR 458	STRADER	ROLE TRANSITION TO PATIENT CARE MANAGEMENT	APPLETON & LANGE	0-5385-6996-X
W	NUR 494	BLANCHARD	ONE MINUTE MANAGER	BERKLEY	0-425-09847-8
W	NUR 494	WHEELER	PEACE & POWER: HANDBOOK OF FEMINIST PROCESS	NAT. LEAGUE NURS.	0-89737-520-0
W	NUR 494	TAPPEN	NURSING LEADERSHIP & MANAGEMENT CONCEPTS	DAVIS	0-8036-8337-5
W	NUR 751	FEETHAM	NURSING OF FAMILIES	APPLETON & LANGE	0-8385-2543-1
W	NUR 751	FRIEDMAN	FAMILY NURSING THEORY & PRACTICE	SAUNDERS	0-7216-3794-9
W	NUR 751	BOMAR	NURSES & FAMILY HEALTH PROMOTION	LIPPINCOTT	0-397-55032-3
W	NUR 751	WEGNER	READINGS IN FAMILY NURSING	LIPPINCOTT	0-397-55032-3
W	NUR 751	WYRCH	NURSES & FAMILIES	FA DAVIS	0-8036-9605-1
W	NUR 754	WATSON	FRAMEWORKS FOR STUDING FAMILIES	DUSHKIN	1-56134-307-2
W	NUR 754	HAMRIC	CLINICAL NURSE SPECIALIST IN THEORY & PRACTICE	HBC	0-7216-4486-4
W	NUR 754	HAWKINS	ADVANCED PRACTITIONER	TRESIAS PRESS	0-913292-38-9
W	NUR 754	MEZYE	NURSES, NURSE PRACTITIONERS	SPRINGER	0-8261-7770-0
W	NUR 754	SAFFRIET	YALE JOURNAL ON REGULATION	YALE LAW SCHOOL	0-309-10000-0
W	NUR 860	DEGLIN	PUT PREVENTION INTO PRACTICE ED. & ACTION KIT	SUPERINTENDENT	0-8036-2458-1
W	NUR 860	DESHWITZ	DAVIS DRUG GUIDE FOR NURSES	LIPPINCOTT	0-397-51196-5
W	NUR 860	RAKEL	AMPLUARY PEDIATRIC CARE	SAUNDERS	0-721-63804-X
W	NUR 860	PAGANA	CONNY'S CURRENT THERAPY	MOSEBY	1-8151-6628-1
W	NUR 860	MCCANCE	MOSEBY'S DIAGNOSTIC & LAB. TEST REFERENCE	MOSEBY	0-8016-6902-2
W	NUR 860	UPHOLD	PATHOPHYSIOLOGY	BARMARRAE BOOKS	0-8016-6902-2
W	NUR 873	DHHS	CLINICAL GUIDELINES IN FAMILY PRACTICE	DHHS	0-801-62052-X
W	NUR 873	HARKNESS	HEALTHY PEOPLE 2000	MOSEBY	0-801-62052-X
HALF	PA 856	AMMONS	EPIDEMIOLOGY IN NURSING PRACTICE	UNIV OF GEORGIA	0-89854-145-X
W	PA 856	PETERSEN	ADMINISTRATIVE ANALYSIS FOR LOCAL GOVT	GOVT FINANCE OFF.	0-89125-152-9
W	PA 856	BELKLEY	LOCAL GOVERNMENT FINANCE, CONCEPTS, & PRACTICE	SAGE	0-8039-8210-4
HALF	PA 869	BERNARDIN	PLANNING LOCAL ECONOMIC DEVELOPMENT	MCGRAW HILL	0-07-004918-5
HALF	PA 869	SHAFFRITZ	HUMAN RESOURCE MANAGEMENT	MARCEL DEKKER	0-8247-8590-8
W	PA 870	NORRIS	PERSONNEL MANAGEMENT IN GOVERNMENT	ITP	0-534-19590-3
W	PE 100	ARC	APPLIED STATISTICS FOR PUBLIC ADMINISTRATION	PH	0-13-178443-9
HALF	PE 230	HARRIS	SPSS GUIDE TO DATA ANALYSIS F/SPSS PC+	ARC	0-385-08313-0
HALF	PE 328	BOWERS	CANOENING	MC MILLAN	0-02-350581-8
W	PE 331	CLEGG	DANCE A WHILE	MC MILLAN	0-02-350581-8
HALF	PE 332	ARC	SPORTS PHYSIOLOGY	BROWN & BENCHMARK	0-697-13008-8
HALF	PE 332	ARC	MODERN SPORTS OFFICIATING	WC BROWN	0-697-12610-2
W	PE 333	ARC	CPR FOR THE PROFESSIONAL	MOSEBY	0-8016-7067-5
W	PE 333	ARC	LIFE GUARDING TODAY	MOSEBY	0-8016-7555-3
W	PE 333	ARC	SAFETY TRAINING FOR SWIM COACHES	ARC	329449
W	PE 333	ARC	WATER SAFETY INSTRUCTOR'S MANUAL	ARC	652001
W	PE 333	ARC	SAFETY TRAINING F/ SWIM COACHES INSTRUCTORS	ARC	329450
W	PE 333	ARC	INSTRUCTOR CANDIDATE TRAINING PARTICIPANT'S	ARC	329744
W	PE 333	ARC	INFANT & PRESCHOOL AQUATIC PROGRAM PARENT'S	ARC	329320
W	PE 333	ARC	WADLES PRESENTS AQUATIC SAFETY ACT. BOOK	ARC	329342
W	PE 333	ARC	ARC LONGFELLOW'S WHALE TALES	ARC	652000
HALF	PE 333	ARC	SWIMMING AND DIVING	MOSEBY	0-8016-7770-X
HALF	PE 337	NICHOLS	MOVING & LEARNING	MOSEBY	0-8016-7770-X
HALF	PE 338	FAWRAZ-DAUER	DYNAMIC PHYSICAL EDUCATION F/ ELEMENTARY CHILD	ALYNN & BACON	0-02-900691-X
HALF	PE 352	LUMPKIN	PHYSICAL EDUCATION & SPORT	MOSEBY	0-8016-7822-6
HALF	PE 354	HALL	BASIC BIOMECHANICS	MOSEBY	0-8016-7822-6
HALF	PE 354	PAUL	ANATOMY & APPLIED KINESIOLOGY	SO UPRESS	0-8016-6749-6
HALF	PE 551/751	AUXTER	PRINCIPLES & METHODS OF ADOPTED PE & REC	MOSEBY	0-8016-6749-6
W	PE 555	FOX	PHYSIOLOGICAL BASIS FOR EXERCISE & SPORT	BROWN & BENCHMARK	0-697-12626-9
W	PE 555	GEORGE	LAB EXPERIENCE IN EXERCISE SCIENCE	JONES & BARTLETT	0-86720-783-3
W	PE 558	RAILEY	MANAGING PE, FITNESS & SP PROG.	MAYFIELD	1-55934-173-4
W	PE 599	ALON	HIGH VOLTAGE STIMULATION	CHATTANOOGA GROUP	0-8016-7922-2
W	PE 599	PRENTICE	THERAPEUTIC MODALITIES IN SPORTS MEDICINE	MOSEBY	0-8016-7922-2
W	PE 599	STARKEY	THERAPEUTIC MODALITIES FOR ATHLETIC TRAINERS	FA DAVIS	0-8036-8099-6
W	PE 850	KREIGHBAUM	BIOMECHANICS	MACM	0-02-366310-3
W	PE 851	MAGILL	MOTOR LEARNING: CONCEPTS AND APPLICATION	BROWN & BENCHMARK	0-697-12649-3
HALF	PEISM 756	THOMAS	RESEARCH METHODS IN PHYSICAL ACTIVITY	HUMAN KINETICS	0-87322-291-1
W	PEA 109	BOWER	FOIL FENCING	WC BROWN	0-697-12601-3
W	PEA 111, 32, 33, 34	BRANNER	SAFE EXERCISE HANDBOOK	KH	0-8403-8841-1
W	PEA 118	LUXBACHER	SOCCER STEPS TO SUCCESS	HUMAN KINETICS	0-88011-321-9
W	PEA 200	HAWKINS	WALKING FOR FUN & FITNESS	MORTON PUB	0-8982-2326-6
W	PEA 203	ROSAITO	AEROBICS FOR FITNESS	BURGESS	0-8087-0044-8
HALF	PEA 206	BANCHLE	MOVING FOR HEALTH & FITNESS	MORTON	0-8982-2326-6
W	PEA 207	COTTEL	WEIGHT TRAINING	HUMAN KINETICS	0-88011-451-7
W	PEA 209	POOLE	BADMINTON	TM PAUL	0-88011-451-7
HALF	PEA 210	STRICKLAND	BADMINTON	SF	0-88011-355-3
HALF	PEA 211/212	KITTELSON	BOWLING	HUMAN KINETICS	0-88011-355-3
W	PEA 214	POTTER	GOLF	HUMAN KINETICS	0-88011-321-9
HALF	PEA 215/216	ARC	RACQUETBALL	HUMAN KINETICS	0-88011-440-1
W	PEA 217	BLANKENBAKER	SOFTBALL	HUMAN KINETICS	0-88011-358-8
W	PEA 218	BROWN	SWIMMING & DIVING	MOSEBY	0-8016-6506-X
HALF	PEA 219	COTTEN	TENNIS FOR BEGINNING CLASSES	SOUTHERN UNIV PR	0-88011-318-9
HALF	PEA 293	HATTON	TENNIS- STEPS TO SUCCESS	SOUTHERN UNIV PR	1-550-77003-9
W	PHI 150	BOWIE	VOLLEYBALL FOR BEGINNING CLASSES	THOMPSON ED. PUB	1-550-77003-9
W	PHI 150	MELCHERT	LIGHTWEIGHT CAMPING	HBC	0-15-992389-7
W	PHI 150	WOODHOUSE	TWENTY QUESTIONS: AN INTRO. TO PHILOSOPHY	MAYFIELD	0-67484-952-7
HALF	PHI 354	SOBER	GREAT CONVERSATION	WADSWORTH	0-534-20556-9
W	PHI 354	HOSPERS	PREFACE TO PHILOSOPHY	PRENTICE HALL	0-02-413161-X
W	PHI 399	MATTHEW	CORE QUESTIONS IN PHILOSOPHY	WESTVIEW	0-02-915260-7
W	PHI 553	NICH	INTRODUCTORY READINGS IN AESTHETICS	PAUL & CO. PUBS	0-317-05547-X
W	PHS 151	HEWITT	PHILOSOPHY AND BIOLOGY	SCOTT FOREMAN	0-673-52185-0
HALF	PHS 152	ARNY	PHILOSOPHY OF BIOLOGY	MOSEBY	0-8016-7423-9
HALF	PHY 251-2,3	NOLAN	CLASSICAL & CONT. READINGS IN PHIL. OF REL	BROWN	0-697-12145-3
W	PHY 251-3/261-3	ROGERS	CONCEPTUAL PHYSICS	MOSEBY	0-8016-7423-9
HALF	PHY 261-2,3	SERWAY	FUNDAMENTALS OF COLLEGE PHYSICS	SOUTHERN UNIV P	0-03-096027-4
W	PHY 458/658	KARTUNEN	MANUAL OF EXPERIMENTS IN COLLEGE PHYSICS	SAUNDERS	0-387-57203-1
W	PM 432	COGOLI	PHYSICS FOR SCIENTIST & ENGINEERS	SPRINGER-VERLAG	0-88362-106-1
W	PM 455	GEIS	FUNDAMENTAL ASTRONOMY	GATF	0-8273-3805-8
HALF	PSC 250	BURNS	GRAPHIC ARTS PHOTOGRAPHY BLACK & WHITE	PH	0-13-301250-6
W	PSC 250	BURNS	PRINTING PLANT LAYOUT & FACILITY DESIGN	PH	0-13-301276-X
W	PSC 250	ALLEN	PRINTING ESTIMATING	KENDALLHUNT	0-8403-9686-4
W	PSC 250	DUSHKIN (STINEBRICK)	GOVERNMENT BY THE PEOPLE-BASIC VERSION	DUSHKIN PUB	1-561-34264-5
W	PSC 250	GREENBERG	GOVERNMENT BY THE PEOPLE - NSL	HC	0-673-99302-7
W	PSC 250	HARRIGAN	GEORGIA STATE POLITICS	MACMILLAN	0-02-351420-5
W	PSC 250	JANDA	AMERICAN GOVERNMENT 94/95	HOUGHTON MIFFLIN	0-395-66879-4
W	PSC 250	HUDSON	STRUGGLE FOR DEMOCRACY	CHATHAM HOUSE	1-56643-009-7
HALF	PSC 250	LINBERRY	EMPTY DREAMS, EMPTY POCKETS	HARPER COLLINS	0-673-99658-1
HALF	PSC 250	LOWE	CHALLENGE OF DEMOCRACY: GOVT IN AMERICA BRIEF	WW NORTON	0-393-96473-6
W	PSC 250	SEROW	AMERICAN DEMOCRACY IN PERIL	WW NORTON	0-393-96473-6
W	PSC 250	WOLL	GOVERNMENT IN AMERICA BRIEF	WW NORTON	0-393-96473-6
W	PSC 250	WILSON	AMERICAN GOVT BRIEF	HC	0-673-92325-X
W	PSC 250	WAYNE	ANALYZING AMERICAN GOVT BRIEF	DC HEATH	0-669-34088-X
W	PSC 260	RANNEY	AMERICAN POLITY READER	ST. MARTIN'S PRESS	0-312-13256-5
HALF	PSC 350	OSBORNE	BEHIND THE SCENES IN AMERICAN GOVT	PH	0-13-361049-7
W	PSC 350	VAN HORN	AMERICAN GOVERNMENT	PENGUIN	0-452-26942-3
W	PSC 356	DANDRIDGE	POLITICS OF AMERICAN GOVERNMENT (PKG)	CO PRESS	0-87187-720-1
W	PSC 356	MCCARTNEY	GOVERNING AN INTRO. TO POLI. SCI	S&S	0-8161-9084-4
W	PSC 356	WALTON	REINVENTING GOVERNMENT	TEMPLE	1-56639-145-8
W	PSC 360	TATE	VAN HORN	SUNY	0-87395-991-4
HALF	PSC 363	KAY	BLACK WOMEN'S BLUES	HARWARD	0-697-32540-0
W	PSC 364	ANDERSON	BLACK POWER IDEOLOGIES	ST MARTINS	0-312-05603-6
W	PSC 367	BEINER	INVISIBLE POLITICS	PRENTICE HALL	0-13-489594-5
W	PSC 367	RAMSEY	FROM PROTEST TO POLITICS	HM	0-396-87529-4
W	PSC 367	TAYLOR	MAKE-BELIEVE MEDIA: POLITICS OF ENTERTAINMENT	SNP	0-312-10407-3
W	PSC 372	BENJAMIN	INTRO. TO THE ANALYSIS OF POLITICAL DATA	UNV OF NY PRESS	0-4921-0377-9
W	PSC 372	DUKE	PUBLIC POLICYMAKING: AN INTRODUCTORY	LITTLE FIELD	0-8226-3014-1
W	PSC 372	GITHENS	CONTRIVERSIES IN AMERICAN PUBLIC POLICY	PRINCETON UNV	0-691-03779-5
W	PSC 372		THEORIZING CITIZENSHIP	HARPER COLLINS	0-06-097205-X
W	PSC 372		JUST WAR	PH	0-13-969221-5
W	PSC 372		MULTICULTURALISM	HARPER COLLINS	0-06-501306-9
W	PSC 372		DON'T BE AFRAID, GRINGO		
W	PSC 372		WOMEN IN POLITICS		
W	PSC 372		DIFFERENT ROLES DIFFERENT VOICES		

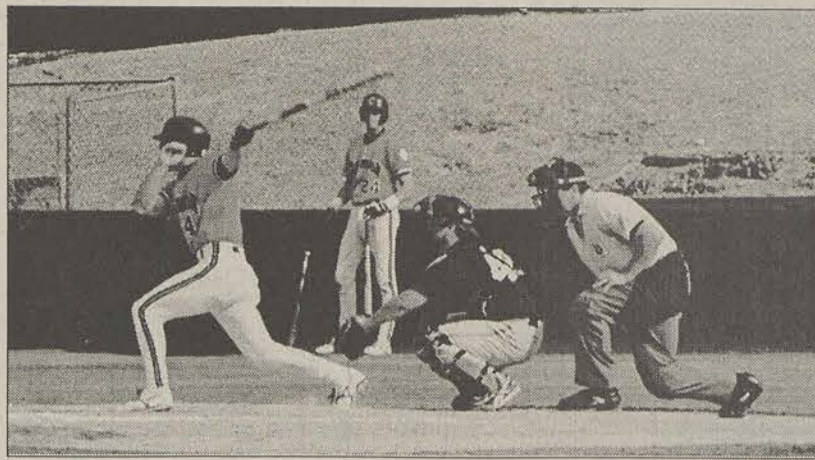
W	PSC 380	BROWN	NEW FORCES OLD FORCES & FUTURE WORLD POLITICS	HC	0-673-52210-5
W	PSC 380	DUSHKIN	WORLD POLITICS 94/95	DUSHKIN	1-56134-290-4
W	PSC 480/680	BROWN	CAUSES AND PREVENTION OF WAR	ST MARTIN'S	0-312-04906-4
W	PSC 480/680	KALUPI	GENDER AND INTERNATIONAL RELATIONS	INDIANA UNV. PRESS	0-253-21265-0
W	PSC 480/680	MORGENTHAU	GLOBAL PHILOSOPHERS: WORLD POLITICS IN WESTER	S&S	0-669-18033-5
W	PSC 480/680	TZU	POLITICS AMONG NATIONS: BRIEF	MCGRAW HILL	0-07-043306-2
HALF	PSC 853	NATHAN	ART OF WAR	OXFORD UNV. PRESS	0-19-501476-6
HALF	PSC 853	PATERSON	US FOREIGN POLICY AND WORLD ORDER	HC	0-673-96689-4
W	PSC 853	WINKATES	AMERICAN FOREIGN POLICY	D C HEATH	0-669-12684-0
W	PSC 853	SPANIER	US FOREIGN POLICY IN TRANSITION	NELSON-HALL	0-8304-13

Snapshots of 1994-95 sports year



File Photo

Tim Heath, an Eagle guard, lets fly with a free-throw against The Citadel.



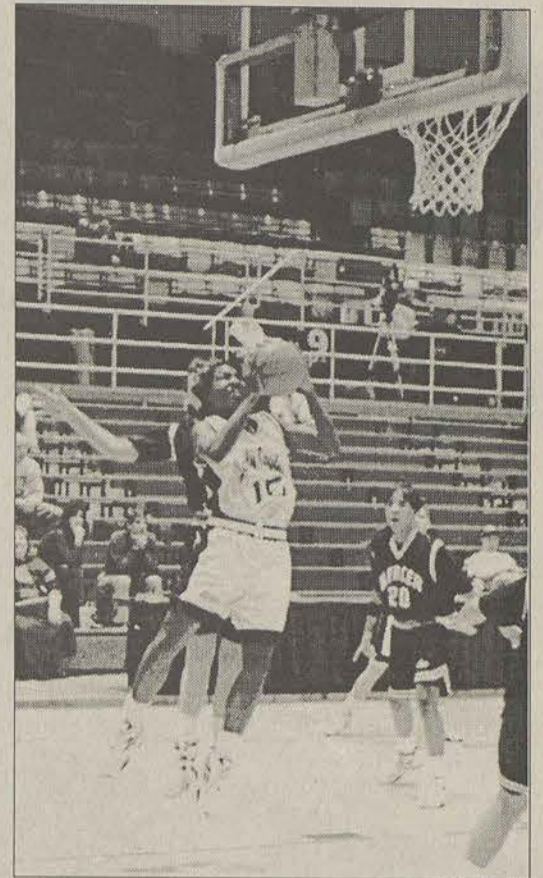
File Photo

The Main Man: SoCon MVP Steve Wilson behind plate vs. Clemson.



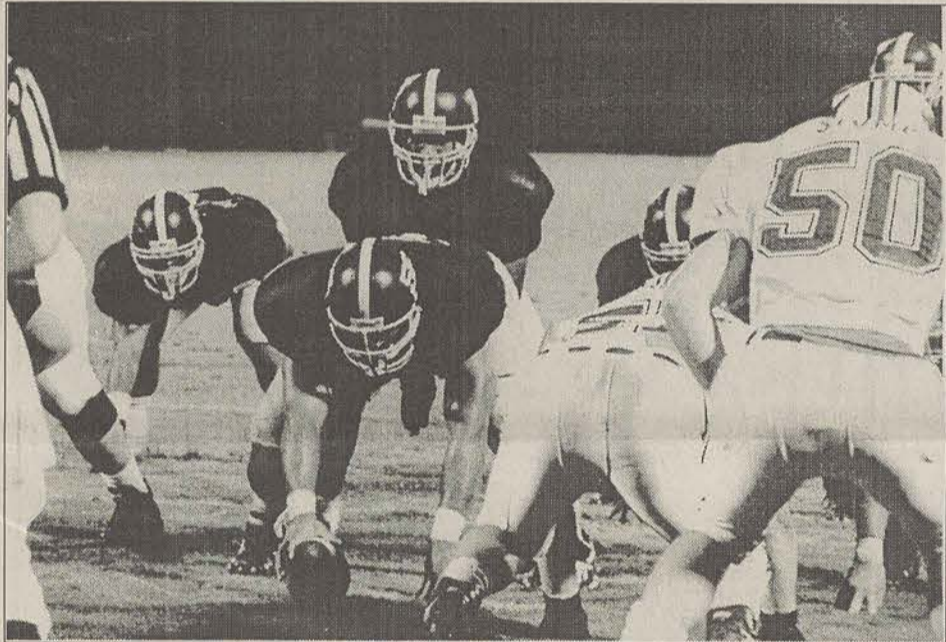
File Photo

Lady Eagle soccer player Carol Furness in action.



File Photo

Andrea Autrey scores against Mercer.



File Photo

Night football came back to Paulson Stadium in 1994. Here GSU faces Marshall.

It was a year when the three revenue sports could not win a Conference championship, but the non-revenue sports took up some of the slack.

ServiceMASTER®

Carpet and Furniture Specialists

Get your living room carpet cleaned for \$37.50 and two bedrooms for free.

Call your ServiceMaster service center for a **FREE ESTIMATE**

489-8369



Bands

24 Track Studio
From \$35 per hour

Record your music in a studio where Music History was made.

Phoenix Sound
AT HISTORIC CAPRICORN STUDIO
MACON, GEORGIA
800-499-7913

Turkey's Auto Sales U-Haul

We rent Trucks & Trailers
We sell U-Haul boxes!
Across Town or Across Country
Reserve Now for summer vacation
Lowest Prices In Town

Call 489-2808
Across from Wal-Mart

WE'LL GIVE YOU A \$200 GRADUATION GIFT, AND WE DON'T EVEN KNOW YOU.

Sure, it's generous. But you don't have to be a relative or close friend to get a fantastic graduation gift from Post. Just bring in this ad to any of our great Atlanta locations, and Post will give you \$200 off your first month's rent. You'll also receive endless amenities and service that's in a class all its own. Plus, a money-back guarantee to assure your satisfaction. So stop by a Post property soon. And cash in on one of the best graduation gifts you'll ever get. Offer expires 7/15/95. This gift cannot be combined with any other offer or rent special.

- | | | | | | |
|---|-----------------------------|------------------------------------|-----------------------------------|-------------------------------|-------------------------------|
| Cobb County | 6. Post Mill® 951-8957 | 12. Post Dunwoody® 671-1590 | DeKalb County | 23. Post Pointe® 294-1515 | 29. Post Oglethorpe® 816-5644 |
| 1. New Post Parkwood® 933-1858 | 7. Post Vinings® 432-3818 | 13. Post Glen® 396-1160 | 18. New Post Lenox Park® 233-4959 | 24. Post Brookhaven® 231-1223 | Gwinnett County |
| 2. Post Village Leasing Center 436-1223 | 8. Post Lake® 432-1300 | 14. Post Trail® 396-4661 | 19. New Post Crossing® 390-9699 | 25. Post Ashford® 452-7040 | 30. Post Chase® 934-1404 |
| 3. Post Valley® 432-3110 | 9. Post Woods® 952-0848 | 15. Post Canyon® 587-3796 | 20. Post Park® 458-4424 | 26. Post Place® 321-3355 | 31. Post Corners® 448-4266 |
| 4. Post Lane® 565-3234 | Fulton County | 16. Post Renaissance® 875-4429 | 21. Post Brook® 320-1725 | 27. Post Summit® 508-1117 | 32. Post Trace® 446-0500 |
| 5. Post Bridge® 951-9548 | 10. Post Chastain® 851-0033 | 17. Post Peachtree Hills® 365-9511 | 22. Post Walk® 633-0373 | 28. Post Oak® 634-4599 | 33. Post Court® 381-7466 |
| | 11. Post River® 842-0580 | | | | |

POST APARTMENT HOMES®
SETTING THE STANDARD.™

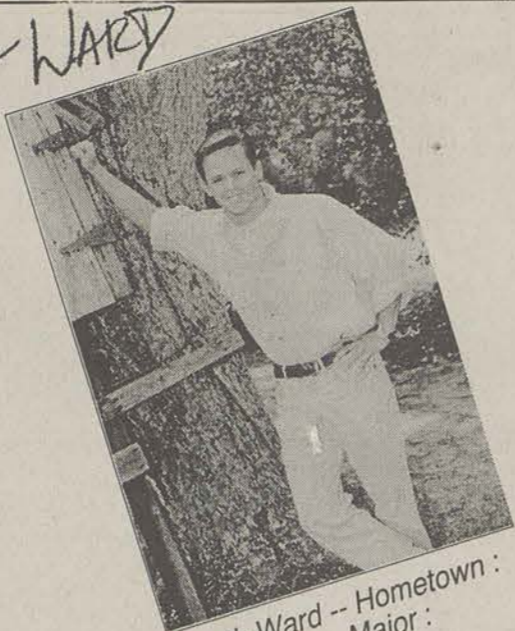
©1995 Post Properties. Equal Housing Opportunity.

Thank you for your continued support of the Community Advisor Program at Bermuda Run, Player's Club, The Seasons, Southern Realty, Stadium Club, Stadium View, Towne Club, Perimeter Realty and Management Company



Ali Streetman -- Hometown: Cumming, Ga., Major: marketing/fashioning merchandising, Interests: working as a DJ at WWGS.

Heath Ward

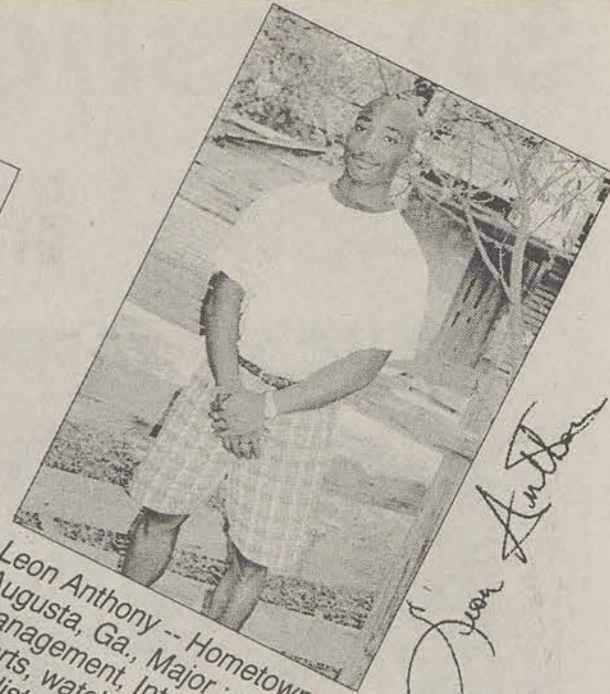


Heath Ward -- Hometown: Vidalia, Ga., Major: communication arts, Interests: jogging, swimming and social chairman of Phi Delta Theta fraternity.

Nicole Avant



Nicole Avant -- Hometown: Martinez, Ga., Major: pre-physical therapy, Interests: waterskiing, working out and traveling.



Leon Anthony -- Hometown: Augusta, Ga., Major: sports management, Interests: sports, watching television and listening to music.

Leon Anthony



Teth Burns -- Hometown: Thomson, Ga., Major: recreation - commercial and resort, Interests: painting.

Teth Burns



Jim Glazier -- Hometown: Brooks, Ga., Major: biology, Interests: making a difference in society.

Jim Glazier



Althea Hurt -- Hometown: Twin City, Major: psychology, Interests: walking since she is eight months pregnant, writing to her husband in Korea.

Althea Hurt



Michele Goldstein -- Hometown: Dunwoody, Ga., Major: special education, Interests: Alpha Omicron Pi sorority.

Michele Goldstein



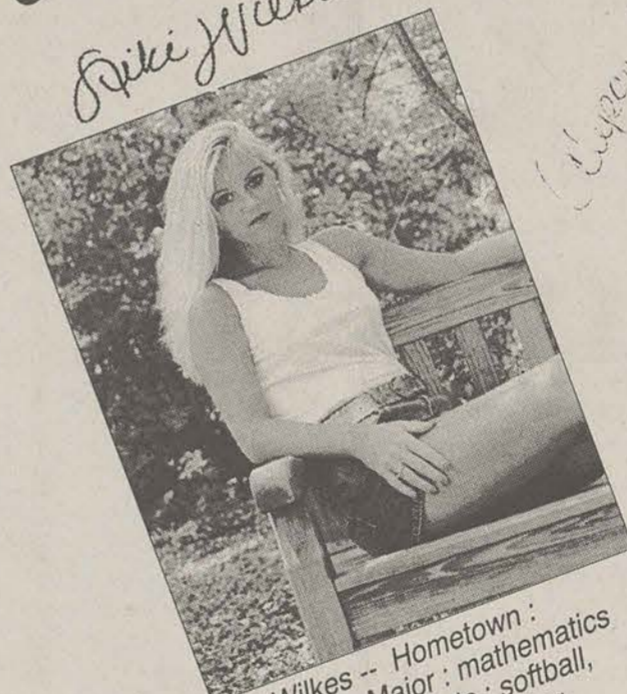
Terril Phillips -- Hometown: Phoenixville, Pa., Major: MIS/finance, Interests: sports and Sigma Chi fraternity.

Terril Phillips

The Most Beautiful Students on Campus

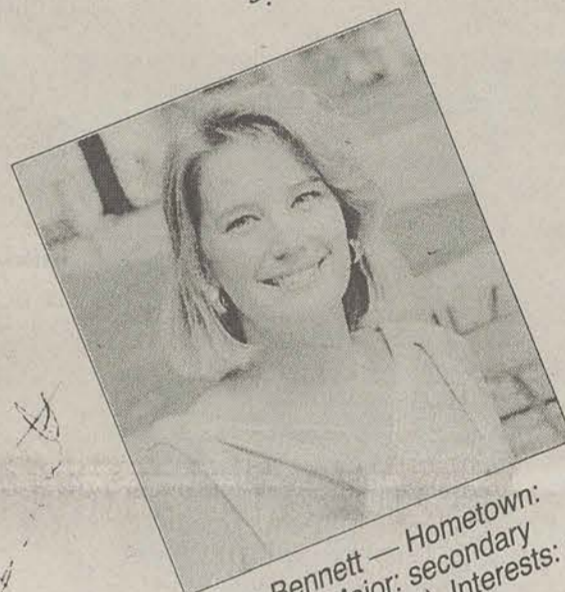
Editor's Note: These individuals were selected by staff committees through a campuswide search. This was not a scientific selection judging every student directly, but rather from an overall perspective. Student-athletes were not considered for the competition due to NCAA regulations. All photos were taken by James Hill except for Hinterliter photo by Enoch W. Autry, and Bennett photo by John Munford. Hurt and Wilkes were special photos.

No one from The George-Anne staff was allowed to participate in the competition. Locations for the photos included the GSU Botanical Gardens, Russell Union and the Pedestrium.



Niki Wilkes -- Hometown: Savannah, Major: mathematics education, Interests: softball, volleyball and water skiing.

Niki Wilkes



Alyson Bennett -- Hometown: Alma, Ga., Major: secondary education (science), Interests: golf, fishing and conversations.



Michael Morrison -- Hometown: Reston, Va., Major: marketing, Interests: Sigma Pi fraternity.

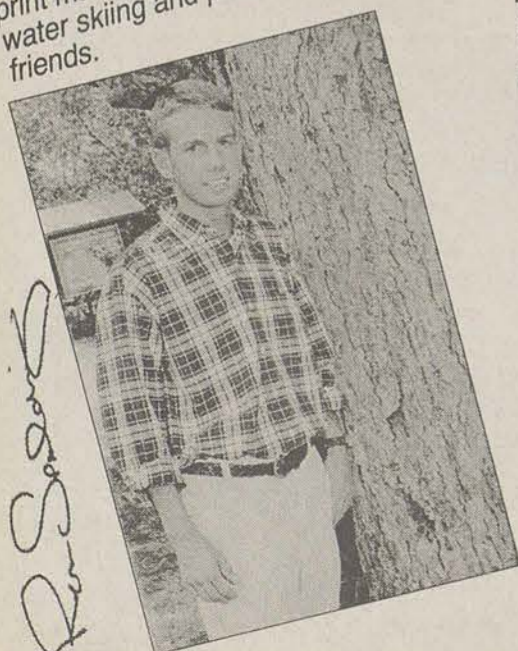
Michael Morrison



Dana Hinterliter -- Hometown: Savannah Major: journalism, Interests: snow skiing, pool, writing, bartending and Alpha Xi Delta.

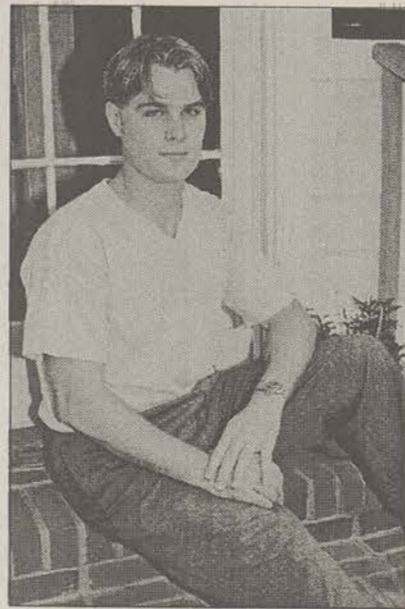
Dana Hinterliter

Ryan Spalding -- Hometown: Peachtree City, Ga., Major: print management, Interests: water skiing and partying with friends.



Ryan Spalding

Nnena Fairley -- Hometown: Alma, Ga., Major: pre-law, Interests: running, talking on the phone and helping others.



Jason Hill -- Hometown: Chicago, Ill., Major: finance, Interests: surfing, reading and going to horse races.

Jason Hill



Calvin Sinkfield -- Hometown: Atlanta, Major: sports management, Interests: basketball and doing mechanical work on classic cars.

Christy Page

Christy Page -- Hometown: Helen, Ga., Major: public relations, Interests: Alpha Omicron Pi sorority.



'94-'95 The Year in Review



SEPTEMBER

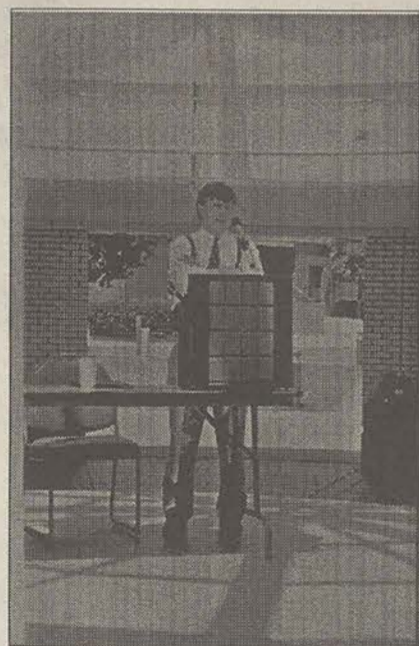
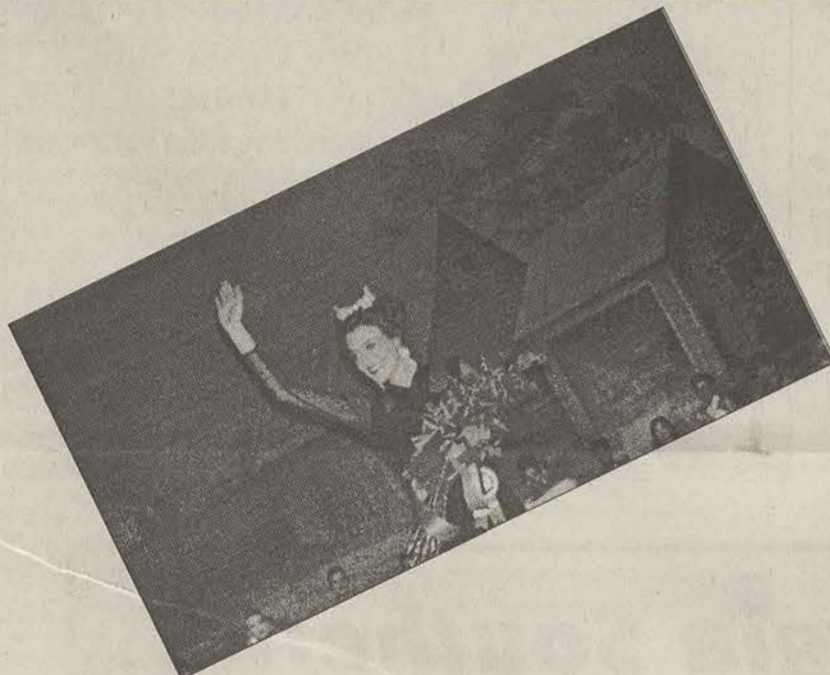
- The Eagles were bathed in brand-new lights in Paulson Stadium to provide night football, but lost the first three games of the season.
- GSU approved a plan to force annual payment of parking tickets issued to faculty and staff before they can get hangtags.
- Nearly a third of HOPE scholarship recipients at GSU lost their benefits due to poor academic progress in 1993-94.
- The first new dorm at GSU in 20 years opened when G-56 took its first residents.
- The University Police installed radar guns in some vehicles to clock speeders.
- GSU President Nicholas Henry announced a period of slowing enrollment.
- The parking office laid out plans for three new commuter lots around campus.
- Four students were selected to play in the 1996 Atlanta Olympic Band.

OCTOBER

- Five electronic message boards designed to boost GSU's athletic budget were still in the planning stages.
- Developmental Studies was officially renamed "Learning Support" as part of a reform process for the department.
- Ricky Perkins of Statesboro was arrested as a suspect in the alleged off-campus rape of a female student.
- Over \$1,000 was reported stolen from the Southern Boosters ticket office.
- Student Jason Gates apparently committed suicide after allegedly assaulting female acquaintance Portia Cain.
- The deadline to turn in petitions for a vote on legal liquor passed without action from those leading the effort.
- Slick Dickerson and Carmelita Whitaker were crowned Homecoming King and Queen, respectively.

NOVEMBER

- A fight broke out an intramural game, sending one student to the hospital.
- As part of Alcohol Awareness Week, the vehicle of Statesboro DUI victim Ernest Tootle was displayed near the Union.
- Coca-Cola President Douglas Ivester visited GSU and donated \$100,000.
- Public Safety Director Ken Brown said crime in dorms was the heaviest in Oxford Hall.
- The football Eagles set new records in a 66-13 thrashing of Glenville State.
- Theater students and faculty voiced their complaints about facilities.
- A student alleged he was assaulted in his room in the new G-56 dorm.
- Head men's basketball coach Frank Kerns and two assistant coaches resigned in the face of allegations the program had violated several NCAA regulations.



JANUARY

- Former GSU baseball pitcher Clint Fair pleaded guilty in the DUI-related death of Ernest Edwin Tootle, and was sentenced to five years in prison.
- Faculty and staff owed over 500 unpaid parking fines as of Jan. 6.
- It was found the Learning Support graduation rate was lower than the rate for students not enrolled in the program.
- Some students protested the removal of MTV from the basic service package provided by Northland Cable.
- A mental ward escapee abducted head basketball coach Doug Durham's fiancée, who later escaped.
- GSU announced it may add a women's sport in three to five years.
- Students who lost the HOPE scholarship could get a second chance under a proposed plan from Gov. Zell Miller.

FEBRUARY

- The Bike Shop near campus was burglarized in the early morning hours.
- GSU still needs clarification about legal matters surrounding the placement of message boards around campus.
- A pizza delivery man was robbed of money and food in Stadium Club.
- Greek advisor James Orr clarified alcohol rules following Sigma Chi's probation status due to alleged violations.
- Another fight at an intramural game resulted in two players being ejected.
- A hazardous chemical caused part of the Biology Building to be evacuated.
- Cyndi Deloach was named Miss GSU.
- Over \$100 was stolen from the Russell Union Game Room during open hours.
- Chena's Cantina closed its doors after serving the college community for over two years.

MARCH

- The GSU golf team was allowed back at the private Forest Heights Country Club to host the SoCon tournament.
- School officials answered questions about proposed fee increases at an SGA forum in the Russell Union.
- Country music singer Aaron Tippin was scheduled to play at MusicFest '95 in Paulson Stadium.
- Career services acting director Trish Bergmaier said not enough seniors were taking advantage of on-campus interviews with companies.
- The faculty senate approved a \$5 athletic fee hike with the agreement that another increase wouldn't be requested for at least the next two years.
- Graffiti began appearing on campus.
- Construction of a new intramural building would begin next fall.

APRIL

- A parking crunch was expected to occur in the fall due to construction at the south end of campus.
- A Reggae Fest with the Wailers at Oxford Field failed because of a Statesboro power outage.
- The University System approved a tuition hike that hit out-of-state students the hardest with a 15 percent increase.
- The ticket for Lee Hyer, one of three students running for SGA president, gave out free pizza to students to gain attention for his campaign.
- A debate between SGA candidates in the Union Rotunda drew few students.
- The SGA election resulted in a runoff between Hyer and Mario Hairston.
- Message boards would be ready for placement by June.
- The runoff was changed to three days.

MAY

- Hyer won the SGA runoff with 57.4 percent of the vote over Hairston.
- The faculty/staff lot outside Newton was permanently closed to make room for Pedestrium construction.
- Three students were charged for marijuana possession.
- Food Services could be replaced by private restaurants as part of a state proposal to reduce government bureaucracy.
- Several students were abducted from the Country Club and forced to drive into South Carolina.
- Admissions standards were on the rise in Georgia's state schools.
- NCAA violations in the GSU men's basketball program were acknowledged.
- A Pedestrium bike ban was proposed.
- GSU employee Valerie Dukes charged sexual harassment in the workplace.

Survey says: 60 of 180 students admit to cheating

By Amy Correll, Debbie Griffin and John Munford

Are one-third of GSU students cheating?

Are more than half of GSU students aware of cheating in their classes?

And do most students look the other way when they see the cheating in their classes?

The answer, according to a recent survey on academic dishonesty, is yes.

Sixty of 180 students polled May 17-19 admitted to cheating on a test, paper or other assignment within the past two years at GSU. And 98 students said they had been in classes where they knew cheating occurred. But only 12 of those students said they turned another student in for academic dishonesty.

Projected over the current enrollment of 14,138 students, the survey that then 4,713 students on this campus have cheated — 511 people short of filling Hanner Fieldhouse.

To make matters worse, none of the students surveyed said they were caught. According to figures released by Judicial Officer Ed Bayens, only 75 students over the past two years have been brought up on charges of academic dishonesty. But in 89 percent of those cases, students were found guilty of violating Student Conduct Code policies against academic dishonesty.

They cheat because they can

Of the 60 students who admitted to cheating, 21 of them said they did so because it was easy.

Bayens said GSU professors

should bear the responsibility for keeping a closer eye out for academic dishonesty because cheating "compromises the integrity of students' grades."

"Some professors are not as diligent as others," Bayens said. "They'll give a test and sit in the front of the room and grade tests, read a book or even leave the room for short periods of time. It's one thing to give a test, but it's yet another thing to proctor it. When you leave the room, you're asking for trouble. Students have said to me, 'How could he see me cheating when he's got a book stuck up in his face?'"

Harry Carter, Vice President of Academic Affairs, called the survey results "disturbing," but said GSU faculty members should be aware of university policies concerning academic dishonesty through copies of the student conduct code distributed to teachers and through a brochure the academic affairs department put together a few years ago.

"It [academic dishonesty] is a concern, and I do think we keep an eye out for it," Carter said. "I don't think faculty members are looking the other way, but how hard should they have to work to prevent cheating? If we all placed preventing academic dishonesty as a high value, we could stop it."

"But based on the survey results, we're not all doing that."

Carter also said professors have the alternative to adjudicate the cases themselves if they see fit, although he admitted that option still did not explain why so few cases are reported to the office of judicial affairs.

About the survey

Of 180 students polled about occurrences of academic dishonesty, 60 students admitted to cheating at Georgia Southern University within the past two years.

The surveys were conducted at three different locations on campus: the Union, Lakeside and Landrum Postal Services from May 14 - May 17 during the hours of 8 a.m. - 10 a.m., 1 p.m. - 3 p.m., and 5 p.m. - 7 p.m. Every fourth student passing by was asked to participate in the survey, which carries a +/- 11 percent margin of error.

Respondents comprised of 54 white males; 48 white females; 34 black males; 32 black females; 6 Asian males; 3 Asian females; 1 Hispanic male, and 2 Hispanic females.

Amy Correll is a senior English major pursuing a journalism minor. Debbie Griffin and John Munford are senior journalism majors.

"Obviously 75 students is not equal to 4,000," Carter said. "[But] it sounds like your survey was random enough that we would expect that one third of the student population is a reasonable representation of what's going on."

And the survey indicated that some of the students who cheated didn't come to GSU to learn: When asked why they cheated, 19 students said the grade was more important than the knowledge.

"The survey disturbs me from the point of view that the college experience is supposed to be about individuals developing their talents," Carter said. "Hopefully another aspect of the college education is values clarification — what's right and what's wrong."

Carter, a former Bulloch County Board of Education chairman, said students may be cheating because they were able to get

away with it in high school. Among the survey results, 27 percent of the cheaters are education majors.

"We need to try and give students the appropriate values early," Carter said. "If those habits are developed early, then when the students get to us, it will be natural for them to steer away from any academic dishonesty. If it is commonplace in public schools, then it becomes hard to break that pattern."

Cheaters tempted due to pressures, teacher says

Communication Arts Professor Dirk Gibson has referred at least one case of academic dishonesty per quarter since he came to GSU in 1991. He caught one student cheating in his classes three quarters in a row.

Gibson said he was not surprised at the survey results, but he realizes that some students are tempted to cheat because of

outside pressures: to achieve perfection and to get good grades. And he said some faculty are more diligent than others as they should be.

"I think it's a part of my job to watch out for students who cheat," Gibson said. "I've had a teacher in my own department tell me that he suspected a student was copying from another student's work, only to later tell me he was relieved because they were merely copying directly from the book. That's plagiarism."

"I don't know if that is an indicator of how rampant cheating is on campus, but I do think a lot of professors on campus aren't concerned with academic dishonesty."

Gibson said students' parents are as much or more to blame for occurrences of academic dishonesty than the students because they bear responsibility for shaping the students' moral attitudes. Faculty, he said, are also responsible because they need to keep students honest so learning can actually take place.

"To be blunt, I try to scare people [about the seriousness of academic dishonesty]. But it seems that's not enough."

Evidence must be concrete

Bayens said the majority of

cases referred to judicial affairs are forwarded by professors who notice discrepancies in student papers, or notice answers copied verbatim during a test. He said any professor who brings a case to judicial affairs must have concrete proof before the student can be found guilty of academic dishonesty.

And when a student is found not guilty of academic dishonesty, Bayens said, the faculty member who brought up the charges often gets mad because they feel they are not being supported by the University.

As a deterrent, Bayens, who himself teaches a GSU 120 class, said he encourages professors to include — as he does — a statement in their syllabus about what constitutes academic dishonesty.

"My syllabus says that any student in my class found in violation of academic dishonesty will receive an 'F' in the course," Bayens said. "I don't have much of a problem with cheating, but I tell them before the test that if I see them looking on someone else's paper, I'm going to make some negative conclusions about what they're doing."

"The faculty could do a lot more to discourage students who cheat."

FINANCIAL AID

Financial aid office ahead of schedule with smaller staff

By Kim Wagner
Senior Staff Writer

Even though GSU's office of financial aid lacked a director since November and an assistant director since January, the student application process for the 1995-96 year is running ahead of schedule.

In addition to processing about 1,400 summer award letters, the office of financial aid has already sent out 2,500 award letters for the 1995-96 school year. Award letters tell students how much financial aid they are eligible to receive.

"For the last two years we didn't mail any award letters out to students until July," said Don Wilson, acting director of financial aid. "Even though we've been short full time administrators, everybody has pulled together and we've picked up the slack and got busy."

Wilson also attributes the office running ahead of schedule to the fact that for the first time in two years the software in the financial aid office has not been changed. This allowed the processing of applications to begin earlier.

In a three year span the number of applications processed has doubled over 100 percent. So far

12,164 financial aid applications have been turned in for the 95-96 year and the deadline for applications is not until next year.

However, if a person is applying for aid Wilson suggests hav-

ing the application completed as soon as possible.

"I usually tell people that as soon as they get their taxes done they should fill out the application," Wilson said. "You really

need to have files complete by June or July at the latest.

Please see AID, page 12

SGA positions available:

Publicity Coordinator
Executive Assistant

Resumès due June 2, 1995 by 4:00 p.m. at the SGA office in the Russell Union room 207.

For more information and position requirements contact the SGA office at 681-0655

Georgia Southern...

Domino's Pizza® would like to THANK-YOU for your support throughout the Year.

HAVE A GREAT SUMMER!

CALL US TODAY!
Serving Statesboro/GSU
681-4326

<p>\$12⁹⁹ Plus Tax</p> <p>TWO LARGE PIZZAS Each with 2 Toppings</p> <p><small>Deep Dish Extra Valid at participating locations. Not valid with any other offers. Customer pays sales tax where applicable. Our driver's carry less than \$20. Delivery areas limited to ensure safe driving. * 1995 Domino's Pizza, Inc. CALL NOW! Offer ends 6/15/95</small></p>	<p>\$11⁹⁹ Plus Tax</p> <p>Medium Pizza with Up to 3 Toppings & a 10 Piece Order of Buffalo Wings</p> <p><small>Deep Dish Extra Valid at participating locations. Not valid with any other offers. Customer pays sales tax where applicable. Our driver's carry less than \$20. Delivery areas limited to ensure safe driving. * 1995 Domino's Pizza, Inc. CALL NOW! Offer ends 6/15/95</small></p>
<p>\$1⁹⁸ Plus Tax</p> <p>GSU ADD-ON SPECIAL An Order of Twisty Bread® & 2 cans of Coke® or diet Coke®</p> <p><small>Valid at participating locations. Not valid with any other offers. Customer pays sales tax where applicable. Our driver's carry less than \$20. Delivery areas limited to ensure safe driving. * 1995 Domino's Pizza, Inc. CALL NOW! Offer ends 6/15/95</small></p>	<p>\$8⁹² Plus Tax</p> <p>LATE NIGHT SPECIAL! Large 1-Topping Pizza, an order of Twisty Bread® & 2 cans of Coke®</p> <p><small>Valid every night from 9p.m. - Close Valid at participating locations. Not valid with any other offers. Customer pays sales tax where applicable. Our driver's carry less than \$20. Delivery areas limited to ensure safe driving. * 1995 Domino's Pizza, Inc. CALL NOW! Offer ends 6/15/95</small></p>

Today's Quote

"The world seldom notices who teachers are, but civilization depends on what they do."

-- Lindley J. Stiles

01-Announcements

ATTENTION: The George-Anne screens all classified ads prior to publication. The newspaper strives to accept ads for legitimate products & services only. Students are urged to exercise caution when replying to ads, particularly those which ask for money or a credit card number in advance of delivery of products or services. Students are also urged to report to the newspaper (at 681-5418) any suspicious offers they might see in the classifieds. Remember, if an offer seems too good to be true, it probably is.

Gamma Bet Phi general meeting Thursday, May 11 7pm. Union Theater. Please attend.

Interested in joining College Republicans? Have fun, attend conventions, meet leaders of our state and nation. Call 871-3406.

03-Autos for Sale

1992 Red Chevy S-10 Pick-up. Tinted windows, rally rims, 58,000 miles. Good, dependable vehicle. \$8500. Call Donnie at 852-5028 and leave a message.

83 Ford LTD, new transmission, new starter, 3.8 engine, AC, cruise, runs good only \$720. Call 681-1782.

For sale: 1991 Jeep Wrangler. Great condition! Must sell now!!! Call Michelle at 681-8425.

MUST SELL! '94 Jeep Wrangler. Only 10K. Forest Green. Equipped with Big Foot Package, 32-11.5 alloy wheels, back seat, lockable console, carpet, and detachable CD. Call 681-8405.

Must sell 1983 Pontiac Gran Prix, runs good, needs a little work. \$800/OBO. Call Kevin at 681-9163.

06-Child Care

NANNY -- SPEND THE SUMMER ON HILTON HEAD. Active and caring lady to take care of my two daughters, ages 7 & 10. Live-in or live-outwith salary. Lots of flexibility. Call (803) 681-4567.

08-Freebies

Giving away 17 week old dwarf rabbit. Must get rid of before end of quarter. Rabbit comes with cage, water bottle, food, and shavings. If interested call 871-7622.

09-Furniture & Appliances

For Sale: 2 wood bureaus for more information please call Carla at 681-7956 and leave a message.

For sale: couch and dining room table. Call 681-1271. Ask for Rachel.

For sale: loftbed with mattress. Great for small apartments. Call Lisa 681-7827. Leave message. Must sell.

For sale: Whirlpool microwave. Large capacity. Call Jeff 764-3826. \$50.

Full size waterbed w/headboard-best offer. Sectional couch, \$50. Sofabed, \$30. Dresser and nighttable, \$50. Men's 10 spd mountain bike, \$50 or best offer. Call Diane-681-1773.

Hunter green sofa, rocking chair, and arm chair with matching coffee table. Country style. Paid \$600, will sell for \$300. Call Donnie or Mary at 852-5028.

11-Help Wanted

500 summer camp positions in NY, PA, New England. Instructors & coaches needed: tennis, water sports, gymnastics, ceramics, outdoor adventure, all sports, all creative & fine arts. Call Arlene 1-800-443-6428.

ALASKA SUMMER EMPLOYMENT. Students needed! Fishing Industry. Earn up to \$3,000-\$6,000+ per month. Room and board! Transportation! Male or female. No experience necessary. Call (206)545-4155 ext. A53944

ATLANTA COMMITTEE FOR THE OLYMPIC GAMES INTERN NEEDED: Savannah office for the Olympic Games Yachting Competition is seeking a mature, motivated, detail-oriented intern to work with the Venue Management Staff. Start June 1 (or earlier), End August 20. Work 24-30 hours per week. Non-paid, but will work to arrange academic credit with your department. Call Todd Allen, Associate Venue Manager, (912) 231-1996.

Attractive dancers wanted for Baby Dolls Adult Entertainment Nightclub in downtown Augusta GA. Exp. Preferred, but will train. Friendly and congenial atmosphere. Transportation and housing provided. Excellent incentive program offered. Must be a minimum of 18 years old. Call pager 706-731-1148 or 706-722-0540 after 5pm.

Babysitter needed weekdays summer and fall quarter. Walking distance to campus. Send letter of interest and references to S.A.M. LB 8105.

CRUISE SHIPS HIRING: Travel the world while earning an excellent income in the Cruise Ship and Land-Tour Industry. Seasonal and full-time employment available. No exp necessary. For info. Call 1-206-634-0468 ext. C53946.

Desperately need 1 female to sublease. Whole summer \$440, 2 br, 1 ba. Across from campus beside the pool. Call Heather or Anna at 681-8495.

Earn extra \$\$\$ this summer. Work available in Atlanta area and surrounding metro counties. Positions open in both office and warehouse. Call today, work when school is out. ATS Staffing (404) 507-6030.

HELP WANTED!!!! ATTENTION! GSU STUDENTS FULL TIME INCOME, PART TIME WORK CALL! 489-5998.

HELP WANTED: Cashiers afternoons, evenings, weekends apply in person, Grady's Citgo, Exit 24 I-16.

JOB'S AVAILABLE IN PRIVATELY OWNED CHILDREN'S SLEEPAWAY CAMPS IN NY, PA, MAINE. SKILLS NEEDED TO TEACH: TENNIS, SWIMMING(W/S), GYMNASIICS, ROLLERBLADING, WATER-SKIING, SAILING, ARCHERY, ENGLISH RIDING. GROUP LEADERS, ALL SPORTS. 1-800-443-6428!!!!

LIFEGUARDS: Trinity Pools is now hiring lifeguards, managers, swim coaches, swim instructors, communication directors, and service technicians for the Metro Atlanta, Nashville, and Birmingham areas. Full and part time summer positions are available. For info call (404) 242-3800.

RESORT JOBS: Work at one of the many Resorts in the United States. Locations include Hawaii, Florida, Rockies, New England, etc. Earn to \$12/hr. +tips. For more information, call (206)632-0150 ext. R53941.

Student-mom needs sitter for Summer Quarter. 2-3 days a week. AM hours. Call 858-2891 or note to J. Stokes, LB 10473.

Wanted: student to work with horses, help with lessons both English and Western. Show experience preferred. May trade for horse boarding. References required. Phone 764-2068.

12-Lost & Found

Black and white cat with crop tail found behind Arby's. Needs a good home. Call 871-7201, W 681-3044.

13-Miscellaneous for Sale

Alltel car phone plus service for sale. Motorola bag phone with set monthly rate lower than most. Only 3 months into 1 year contract. Must sell service with phone. Leave message at 764-8101.

Brand new Sharp brand business and financial calculator for sale. Amortizes, discounts, cash flows, regression. Handbook included. \$30 OBO. Call 681-4041. Ask for Will.

Computer 386DX-40 4MB RAM, 255MB HD 3.5, 5.5 drives, multi-media, SVGA monitor, color printer and a bunch of software. \$775 OBO. Call 871-7293.

Computer for sale: Laser 128 Apple compatible w/monitor. Includes Word Perfect Software. Blank disk included. Call Scott 871-7655. \$100 or less!

For sale: TI-81 calculator with book. \$50 OBO. 681-4041. Ask for Rusty.

For sale: TI-82 calculator. Used one quarter. \$75. Call Jeff at 681-0789, leave message if not there.

For sale: Weider Weight Machine. New asking \$100. Call Susan 865-5626.

New 1995 Cannondale M-300 Mt. Bike. \$325 OBO. Call Jason at 871-7977.

PRINTER FOR SALE: Panasonic Dot Matrix printer-use for IBM compatible computers. Great shape with good print! Call Scott 871-7655. \$80 or neg.

TI-81 calculator for sale. \$46-practically new. Hardly used, contact Sane at 681-1519.

Woman's mountain bike for sale. Good condition \$100. Call Elizabeth 681-6682.

16-Personal

CONGRATULATIONS NEW SISTERS OF ALPHA XI DELTA! Amara, Dana H., Jenny P., Ahsa, Megan, Lani, Jennifer P., Tammie, Kathryn, Rhyea, and Michelle. WE LOVE YOU! Jenn D. And Kristi S.

17-Pets & Supplies

2 Parakeets with cage and accessories for sale-\$50. Birds are sweet and fun to play with. Call Mary at 681-2768 and leave message.

Parrot for sale. Very gentle and can speak and dance. Paid \$450 for bird and accessories-will sell for \$350. For more info-call 852-5028 and ask for Mary Glenn.

Puppy for sale mix black/white male. \$30. Comes with food and toys. Also needs shots 489-5149. After 1pm.

19-Rentals & Real Estate

1 bedroom apartment sublease for summer quarter. Available immediately. \$300/mon. Walk to campus, great location. Please call between Monday to Thursday after 6pm. Phone 681-9740.

1 nonsmoking roommate needed for summer quarter. In a 3 bedroom mobile home. Only \$100/mon +utilities. Call 681-6717.

1991 Oakwood mobile home for sale. 3br, 1 bath in excellent condition. No equity. Call 842-5599, leave message.

2 bedroom townhouse for summer lease. \$100x2 first months rent. \$192.50 there after. Call Robert or Noel 764-9816. (On South Mulberry Street).

2 bedrooms available summer quarter Campus Courtyard. 4 bedroom apartment. Fully furnished. \$225/mon. Call Angie or Meg 871-3881.

Apartment for sublease starting June. One bedroom, 1 bath, tennis courts, swimming pool across 301 from campus. 871-3562 or 871-4517. Leave message.

Campus Courtyard Apt. #106, has a large bedroom available with a 1/2 bath and spacious closet. The apartment is furnished. Please call 681-7098 or (813) 799-4415 for information.

Extremely clean and quiet 1 bdrm furnished apartment-utilities included. Call Dana at 681-9008 for more info. Price @ \$425.

Female sublease needed immediately for summer quarter. Player's Club apts, \$250/mon + 1/3 utilities. Call Karen at 681-9163. Negotiable.

For sale: 14x70 Mobile Home. 1987 2br, 2ba excellent condition. Call 763-3518 after 6pm.

GA Villas #21 summer sublease. 2 bdrm, 1/2 utilities. June rent negotiable. 871-2667 or leave message.

Georgia Villas #17 available summer quarter w/an option to renew lease for 95-96 school year. 2bd, 1bath, W/D, furnished. \$425/mon. 823-3513.

Georgia Villas #17 is currently available for summer quarter. If you have questions, please call 823-3513

HOME FOR SALE: Ramblewood Subdivision: Well-maintained, affordable 3br/2ba house 1500+ square foot, central H/A/C, new vinyl flooring, new carpet, carport, recently added large screen porch and 14x20 workshop/storage building, attractively landscaped. \$76,900. Call for appointment 489-8434(day) 489-1923(night).

HOUSES & APTS AVAILABLE SEPT. 1, No pets. All utilities furnished at 602 S. College Apts. Need related students for 4 BR houses. James M. Hood, 764-6076.

Large, 2-story 4-bedroom house downtown for 4+ people... lost of privacy and extra space within walking distance of GSU. Washer/dryer included. Low utilities. Available 9/1/95. Call of leave message 489-4422.

LEASE NOW FOR FALL. Large 3br, 1 1/2 bath duplex apt. Modern, fully equipped. Quiet location very convenient to GSU campus. \$555/mon. 489-3286.

Male or female needed to sublease for summer in Stadium Walk. Both of us are leaving, you'll have 2 bedrooms for \$235/mon, nice. Tellas at 681-9014,ASAP.

Mobile Home for sale. Lanier Drive. 3 bedroom, 2 baths, large front deck. Why rent when you can own. \$7,500. Ask for Mark 681-1982

Need a male to sublease summer! Only \$150 for own huge bedroom share bath and 1/4 utilities. Please call 764-9235. Ask for Brian or Carolyn.

Need to sublease for summer quarter. Only \$161.25/mon. Two bedroom townhouse Player's Club. Call Chris, Jeff, or Karey. 871-4050.

Needed one person to stay in 2 BR apt. \$500 for the summer plus utilities. Fully furnished, beside pool, quiet neighborhood. Call 871-6668.

Needed someone to sublease for summer quarter. W/D, dishwasher. Your own bedroom and bathroom. Great Deal! Call Chad at 764-3836

Needed: someone to sublease Eagles Ct. Condo under sublease. \$175/mon + 1/2 utilities. Own room and bathroom. Call Jason at 871-7977.

One male needed to sublease. Summer quarter. Player's Club \$150/mon, furnished, share bedroom and bath. Call Ryan or leave message.

Reasonable rentals- Houses, apartments, mobile homes. 764-5003.

Room sublease for summer. W/D, private bathroom at Towne Club. Looking right at pool. Give me an offer. Call 764-7754, after 6pm

Roommate needed desperately in a duplex for summer quarter. \$200/mon. + utilities. Own bedroom and needs to be female. 871-3193. Ask for Tammy or Melanie.

Southern Villas #19 available starting September 2bd, 1bath, W/D, \$425/mon. 823-3513.

Sublease a room in a five bedroom house during July and August. Cheap rent! Call Gretchen at 488-4022 or 681-8425.

Sublease: Need female for 2 bdrm, 2 bath W/D, \$155/mon + 1/3 util. Shared room. Possibly own room. Willing to compromise on June rent. Can be out ASAP. 681-8451

Sublease: summer at Towne Club. Master bedroom with own bathroom. \$150/mon. Call Scott 871-7655.

Summer quarter, subleasing one bedroom at Player's Club. Have your own room and bathroom, June utilities paid \$161.25/mon. For more info, call Tim at 871-7076.

SWF needed for 95-96 \$225/mon., own room/bathroom or will move in with you if you need furniture and have own room/bathroom. Christine 681-8186.

Take over lease in Sussex. Great roommates. Free water. W/D, own bedroom and bathroom. 1/3 utilities. \$200/mon. Call Kita at 871-3879 or 681-7227.

Two female non-smokers needed to sublet apartment for summer quarter at Players Club Apartments. Private bedrooms, fully furnished, bargain price. Please call 681-2297.

WANTED: to sublease for summer quarter and next year. If so desire. Master bedroom (own bath) many x-tras: pool, walk-in closet, W/D, D/W, and more. You pay the rent-I pay your utilities all summer. Call 681-8775 ask for Tanya.

WF needed to sublease July and August. Private room and bath \$200/mon. Call 681-3634.

20-Roommates

1 female roommate needed for 95-96 school year in Player's Club. 4 bedroom flat \$233/mon + 1/4 utilities. Call 871-7988 or 489-6878.

Anyone who is moving to Savannah for the summer and needs a roommate to help share expenses please call Kent at 489-1406.

Female nonsmoking roommate needed for 95-96 school year to share 3 bedroom mobile home. W/D, \$100/mon + 1/3 utilities. Call 681-6717.

Graduating Senior seeking roommate for fall quarter only. Call 871-7117.

Male roommate needed starting June. Private room at Park Place call GREG at 764-4687.

Need 1 male roommate to sublease summer quarter. Player's Club townhouse. Fully furnished. \$145/mon +utilities. Call Joey at 871-3667.

Need one male roommate for 95-96 for 3brdm apartment. \$200/mon + util. Nonsmoker, serious student and easy going call Chad or Jeff 764-3836.

Needed: 2 female roommates to lease Player's Club Townhouse. \$190/mon + 1/3 utilities. Call 871-7977.

One roommate needed at Stadium Walk #98. \$400 for the whole summer + 1/4 utilities. Call Kevin at 681-9014 ASAP. Leave message. 2brdm, 1ba.

Roommate needed female nonsmoker to take over lease for the summer \$180/mon. Private room, call Elizabeth 681-6682.

Roommate needed male or female. Private bedroom and bath. Park Place. Partly furnished. \$225/mon. 681-4599.

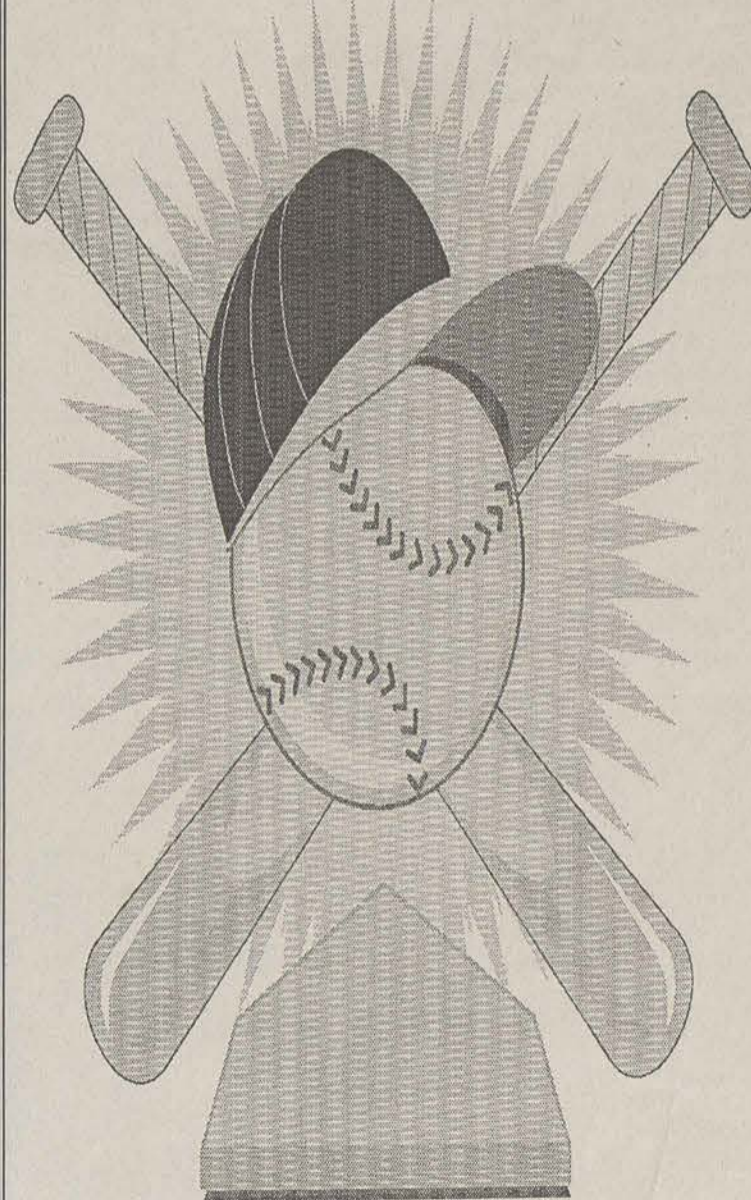
Continued on page 12

JUST THE BEGINNING!

STUDENT RECREATION CENTER FIELDS GROUNDBREAKING

JUNE 1, 1995 10:00 a.m. AT Old Register Rd.

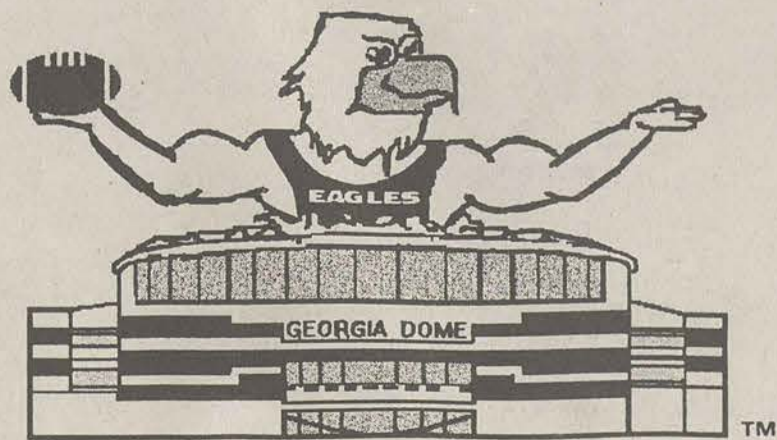
STUDENTS, FACULTY, AND STAFF WELCOME



Campus Recreation and Intramurals 222 Russell Union 681 - 5436

PARTY IN THE DOME FOR 10 BUCKS

EAGLE CLASSIC



FOLLOW THE EAGLES TO THE GEORGIA DOME

THE 1995 EAGLE CLASSIC. Sep. 9, 1995. 3:30 PM

GEORGIA SOUTHERN VS. MIDDLE TENNESSEE STATE

GSU student tickets only \$10 until the end of Spring Quarter. Order your tickets now from the GSU Ticket Office - 681-0123

Roommate needed to share room in a two bedroom apartment. Call 871-6554 for details.

Roommate needed. Male or female, CH/A, W/D, LR, KT. \$250/mon including utilities. \$250 deposit required. Call Ted or Renee 871-4168 or 352-0960.

Roommate needed: nonsmoker, clean, serious student, honest. Own bath and bedroom. W/D. \$175/mon + 1/2 utilities. Starting August or Sept. Call 871-7345. Close to campus.

Roommate needed: sublease for summer. In house five minutes from campus. 1/3 utilities and I will negotiate price. Live June rent free! Call Heather 764-2021.

Roommates needed can move in ASAP! Private room furnished or unfurnished in a house with W/D and cable. Walking distance from campus. \$180/mon. Call 871-4099. Leave name and number.

Roommates needed: 2 females to lease Player's Club Townhouse Fall quarter through Spring quarter. \$190/mon + 1/3 utilities. Call 871-7977.

Two roommates needed for summer and fall is Sussex. Quiet, safe section, cool roommates, own rooms, FREE water and cable w/HBO. Private local owner. Call Josh 681-9037.

21- Services

Are you going to live at Dorman Hall next year? You need carpet. I have one piece of wall to wall grey-low pile carpet for sale. \$50 OBO. I will throw in the padding for free. Call Shawn at 681-2962 or leave message.

Babysitter available weekdays after 2pm. Call Elizabeth 681-6682.

DISCOUNT CALLING CARDS FOR STUDENTS. Anywhere in US for 17.9 cents/minute. NO SURCHARGES. America's cheapest card. Simple and easy call 681-2399.

French tutor available now and through summer. For rates and other information, contact Stephanie at 764-3038.

If you would like to have braids call Chastidy at 681-9264. I have 2 years experience and affordable prices. Call for an appointment today!!!

MATH TUTORING Preparing for FINALS, helping with assignments, and much more. Call now 489-5587. Don't wait till the last day.

TYPING: Lesson plans, term papers, resume, vitae, etc. Call Brenda, 764-1486.

22-Sports & Stuff

For sale: Two tennis racquets, Asymetric Pro Kennex SL3. Good condition. Call Stephanie/Jimi at 764-3038.

Private tennis lessons available, now and through summer. All ages, beginners and experienced players. Contact Stephanie at 764-3038.

23-Stereo & Sound

For sale: Rockford Punch 40, \$150; Rockford Punch 60, \$200; Rockford Pre-Amp, \$100; Rockford Crossover, \$75; Rockford Octave Equalizer, \$125; Rockford Symmetry EPX, \$400. Call Lee 537-8099.

Kenwood Car Stereo System for sale. Still has receipts and boxes. Will let you hear. \$1800. Call Donnie @ 852-5028.

27-Wanted

Chem. 181 tudor immediately! \$10/hr. Please call Jan 681-7783.

AID

Continued from page 10

Financial aid has also implemented a new direct lending program which will make it easier for students receiving the Stafford or Plus loans to receive their checks.

In the past when the student signed an award letter for a loan he or she would choose the bank they wanted for their lender. GSU would then transmit the loan electronically to the guarantor in Tucker, Ga. A promissory note was then sent to the student, who filled it out and sent it to the bank. The check was then sent to GSU where the student could pick it up.

With direct lending, GSU will originate the loan and send the promissory to the student who will send it back to GSU. If the student is relying on the loan to pay his fees, the money will be deducted and he or she will be written a check for the difference. This new program eliminates the bank and the guaranteeing agency.

"What makes this program really good is that instead of the student having to call Atlanta to see if they've sent the promissory note out or the bank to see if the checks have been sent, all contacts will be with Georgia Southern and we'll be able to answer any questions," Wilson said.

"We've had quarters in which a bank sent Georgia Southern's loan checks for our students to Georgia Southwestern," Wilson said. "That will no longer happen because with direct lending to money will already be on campus and we will write the checks."

"I'm very optimistic about the way things are going," Wilson said. "We're working hard to make things easier for students because that's our job."

Pamela Pierce, the new financial aid director, will begin on June 1.

CRAWFORD

Continued from page 1

Tracking alumni
The first five years are the hardest when it comes to tracking down the alumni, Crawford said.

"The last thing they think about is notifying the alumni association," Crawford said. "You can't find John Doe if John Doe doesn't want to be found."

He said the alumni office can help alumni in more ways than they think. Crawford said one of the reasons for an alumni losing touch with the office is time.

"It gets to a point when it gets so far down the road, they feel embarrassed (because they lost contact with the office)," he said.

Crawford said the first thing he tried to do was to travel around the state meeting key alumni to get their input.

"I saw the need for alumni chapters," he said. "There were 13 chapters including one in Washington, D.C. We met there every other year. We also had them in Jacksonville and Tallahassee."

The one in Tallahassee had been on the decline, until the GSU football played the Florida State Seminoles in 1988 and 1990.

These chapters have been changed into GSU Eagle Clubs.

This was an effort to tie in alumni meetings with other events like the Booster meetings.

Crawford said he saw this as a chance to bring athletics together with academics. Instead of having a Southern Boosters meeting in a city like Dublin on one weekend and an alumni meeting the next, this was seen as a way to have both on the same weekend.

Special memories in sports

The Chris Schenkel tournament will always be one of the special memories for Crawford. One of the GSU alumni is now president of the Maxfli Corporation. Known throughout the world as one of the leaders in the golf ball industry, Crawford has several mementos that display his love for golf including a display of the making of a golf ball.

"I don't know how the athletic department feels about it, but I had a great time, but (bringing it back) that is up to the powers-that-be," he said. "To have the top 18 college teams in the country on an annual basis for a tournament, and to have players like Curtis Strange, John Cook and Jay Haas walk Forest Heights course."

Football is reborn

When someone mentions GSU these days, football comes to mind. Many would argue that

football put the institution on the map. They would say that if it weren't for football, GSU would still be a quiet four year college in a sleepy town.

"They were talkin' football 10 years before (it became a reality on April 9, 1981)," Crawford said. "I never thought GSU would have football. My wife has attended 119 straight games, home and away (since the 1986 season). It was a case of the right men in the right place at the right time, GSC President Dale Lick and new GSC Football Coach Erk Russell."

He said football is what put

GSC on the map. Crawford said he once got a call from a man in California who was a Florida State graduate. "We were going to play FSU in football and he wanted a list of GSC alumni in California because he wanted to throw a party," he said. "He was on Days of Our Lives at the time."

Sports has always taken the front pages of newspapers and the leads on telecast, Crawford said.

"You don't hear about the 14-year old in North Georgia who scored a perfect 1600 on his SAT," Crawford said. "Sports are always the top stories."

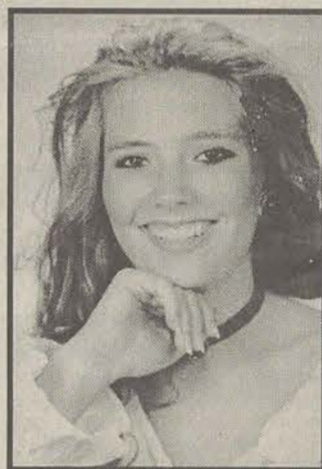
Congratulations Cyndi



Miss GSU Cyndi DeLoach

Good luck at Miss Georgia

We love you, Julie & Gin



SPONSORS:

- Sea Island Bank, Giant Mart, Denise's Jewelry, Henry's Haircuts, Auto Glass Specialists and Collision Supply, Wood's Barber Shop, Optimal Hearing System, Inc., Daylight Donuts Shop, Kelly's Video, Publix, Lori Grace Photography

Tory Bujard
1994 1st Runner Up
Miss Wheelchair Georgia

1995 Competition Date June 8 -11
Miss Wheelchair Georgia

The George-Anne.
It's not just for
breakfast any more.

MANAGEMENT TRAINEES Secure Your Future! Pizza Hut, a leading Restaurant Division of Fortune 20 PepsiCo, is seeking energetic, talented individuals to join our management team. Accountabilities include profit and loss, customer service and motivating/developing teams. Supervisory skills and a background in P&L are desired. We offer a starting salary of \$22-30K (commensurate with experience and accountabilities). As an industry leader, we are also able to offer bonus potential, comprehensive benefits, and stock options. Graduating Seniors, find out more about a solid career path at Pizza Hut. Full-time and part-time hourly management positions are also available. Please forward resume or letter of interest to: Pizza Hut, 634 Maplewood, Bonaire, GA 31005. Pizza Hut is an Equal Opportunity Employer, M/F/D/V. Pizza Hut logo.

1995 FALL SORORITY RUSH SIGN - UP MAY 31ST & JUNE 1ST 10:00 A.M. - 2:00 P.M. UNION ROTUNDA \$35.00 REGISTRATION FEE CURRENTLY ENROLLED STUDENTS MUST SIGN UP AT THIS TIME !!! FOR MORE INFORMATION CALL: 681 - 5185

Surprise your folks. When you stay awake in class, you tend to learn more. (Unless you have an uncanny talent of learning through osmosis.) So don't let fatigue get in the way of your A, Revive with Vivarin. One tablet has the same amount of caffeine as about two cups of coffee. And it's just as safe. Hey, anything is possible, if you're up for it. Revive with Vivarin. Vivarin logo. ©1995 SmithKline Beecham Consumer Healthcare Use only as directed.