

► Striking out ...



The GSU baseball team was not selected for an at-large bid to the NCAA playoffs. See the G-A sports section Thursday for all the details.

BRIEFLY...

Sport Management program approved by national council

GSU's Sport Management program, which prepares graduates to work as managers and marketers for college or professional athletic programs, has received national approval from the Sport Management Program Review Council.

More than 200 colleges and universities offer sport management programs. Seven submitted portfolios to the council for approval, and GSU was one of only two nationwide to receive approval for both graduate and undergraduate programs. The approval is effective to the year 2000.

"This approval tells our students and their future employers that this program gives graduates what they need to be successful in this competitive field," said professor William Spieth.

He said enrollment in the program is climbing, and now comprises nearly 50 graduates and 150 undergraduates.

Coverdell settles lawsuit

The Associated Press

WASHINGTON — Georgia Sen. Paul Coverdell's campaign has agreed to pay a \$32,000 fine and refund \$65,936 in excess contributions to settle an investigation of his 1992 campaign, the Federal Election Commission said Wednesday.

Marvin Smith, Coverdell's campaign treasurer, said in a statement that the committee agreed to the settlement because paying the fine was less expensive than the legal costs of defending itself against and FEC lawsuit.

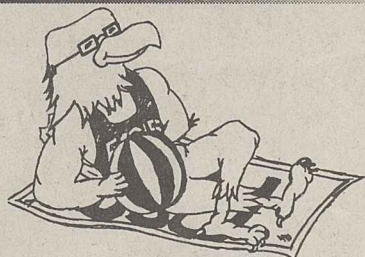
Smith said the FEC questioned the manner in which the committee handled 157 contributions out of more than 15,000 that were received during the 1992 campaign, which involved two primary and two general elections.

WORD OF THE DAY

propinquity (pre-ping'kwi-te) *n.* 1. Proximity; nearness. 2. Kinship. 3. Similarity in nature.

Source: The American Heritage College Dictionary

'BORO WEATHER



TODAY

Partly cloudy, with a high in the upper 80s and a low in the mid-60s.

WEDNESDAY

Partly cloudy, with a high in the mid-80s and a low in the mid-60s.

INDEX

Announcements	3
Classifieds	9
Only in America	3
Opinions	4
Police Beat	3
Sports	6
Time Warp!	3

It is a desire of The George-Anne to print the news of Georgia Southern University as accurately as possible. If you feel that something covered is in error, contact a member of the editorial staff at 681-5246 as soon as possible. Thank you.

FOR ADVERTISING INFO.: 681-5418
STORY OR PHOTO IDEA: 681-5246
FAX NUMBERS: 871-1357 and 681-0863
LANDRUM BOX: 8001

The George-Anne

Liked By Many, Cussed By Some ...
Read By Them All



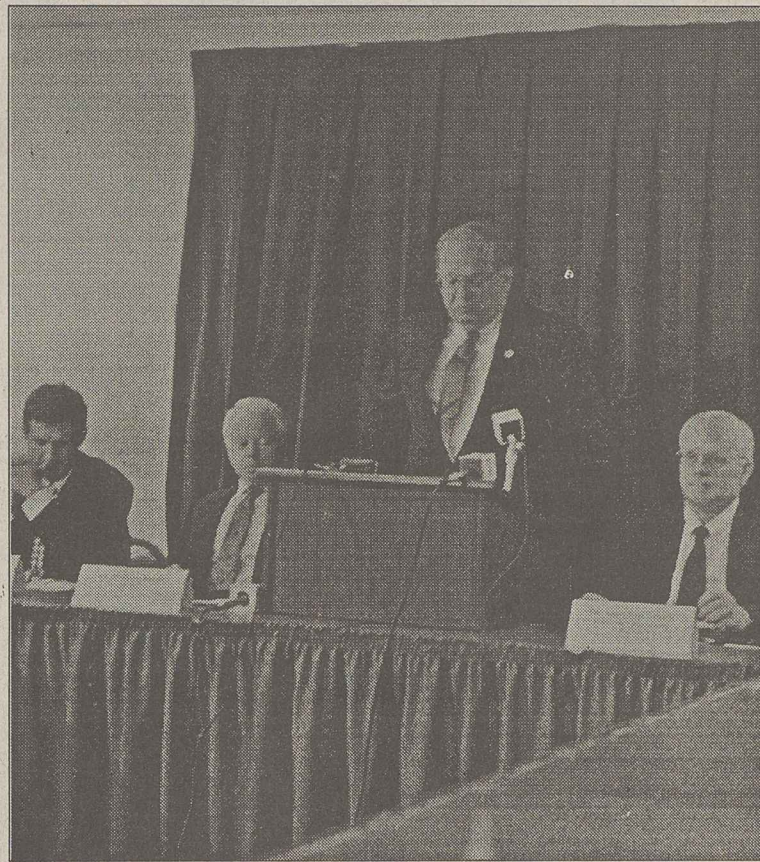
The George-Anne

Georgia Southern University's Official Student Newspaper

Statesboro, Georgia 30460

Founded 1927

GSU confirms NCAA violations

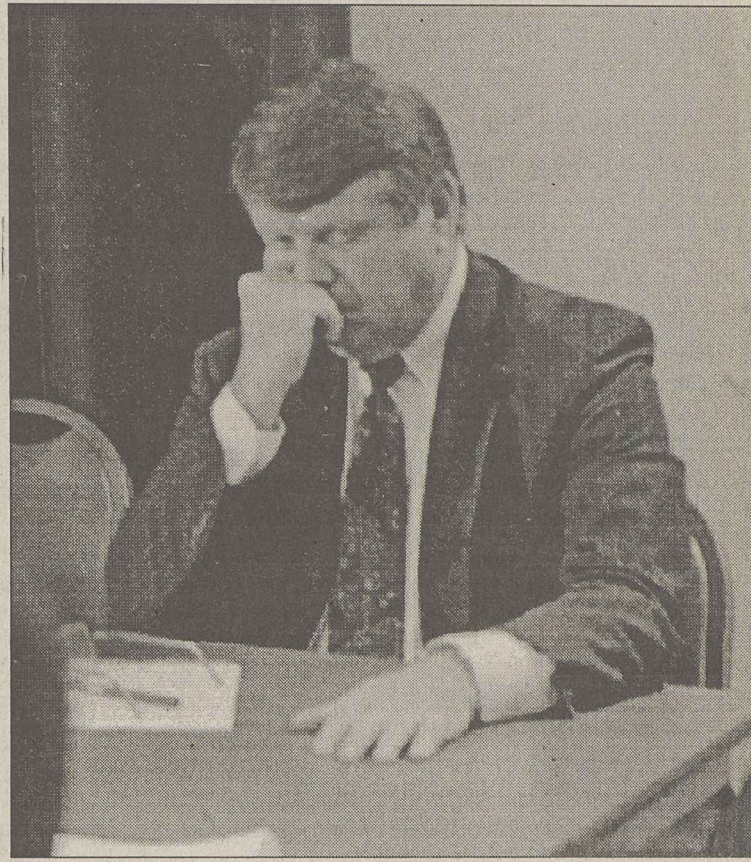
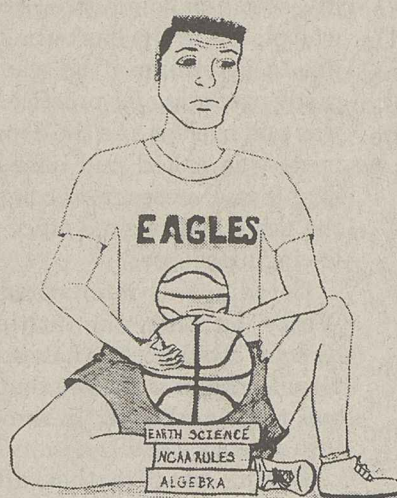


Enoch W. Autry

SoCon Commissioner Wright Waters acknowledges wrongdoings.

MAY 23 1995

LACR & HENDERSON LIBRARY



Enoch W. Autry

GSU Athletic Director David "Bucky" Wagner shows his dismay.

Related news:

- Effects on the basketball program, page 6
- Parties involved in the case, page 2
- Summary of NCAA violations, page 7
- Editorial, page 4

By Chris Sherwood
News Editor

GSU released its preliminary internal investigation which confirmed violations in the men's basketball program pertaining to a recruit that was given help in completing a correspondence course. Additional violations were also found during the six-month investigation.

In November, former Head Coach Frank Kerns, associate head coach Mike Backus and assistant coach Mark White resigned after allegations of improprieties came to light.

"As our report makes plain, we are imposing penalties and corrective actions on ourselves," said GSU President Nicholas Henry.

"When the NCAA's investigation is completed, the NCAA will have the option of accepting our self-imposed penalties as its own; discarding some penalties; or adding others."

GSU's investigation, which involved 1,000 hours of case work and interviewing 40 people, took longer than what was originally expected, according to Henry.

"We realize that investigation has taken far longer than the six weeks we anticipated at the outset, but in this case thoroughness must supersede timeliness," Henry said. "Releasing all our findings underscores our commitment to openness and full disclosure in dealing with matters that affect our institutional integrity."

The brunt of the investigation pertained to transfer player, Chris Parker, who had been enrolled in Allen County Community College.

In regard to institutional control

The following is taken directly from the institutional report to the NCAA from GSU.

In light of the findings and in keeping with the findings of previous NCAA actions at other institutions we also conclude the Association may find a violation of Article 6.01.1 of the Constitution, Institutional Control.

After a thorough evaluation of the events, we (the committee) believes this case is limited in scope; isolated and inconsistent with the normal procedures of the athletic program at GSU. The committee also notes that the circumstances which led to

"AS OUR REPORT MAKES PLAIN,
WE ARE IMPOSING PENALTIES AND
CORRECTIVE ACTIONS ON
OURSELVES."

— NICHOLAS HENRY
GSU PRESIDENT

these violations were uncommon even for the men's basketball program. Much of what transpired was the result of a single new addition to the coaching staff. In hindsight we recognize that Coach White probably had experience with the Southeastern College of the Assemblies of God correspondence program.

Coach White gave us no reason to suspect potential wrong-doing during his early months at GSU. We realized White came from a different environment (junior college as opposed to NCAA institution), and we will take steps in the future to work more closely with people with that background, if we should employ someone from a similar situation.

If we were to accept their testimony, the coaches even tried to keep certain elements of the primary incidents from each other.

We believe the major violations, while grievous, were isolated and purposely executed by individuals who fully understood the possible ramifications of their actions. The appropriate penalty in such a case is the disciplining and/or dismissal of those who were responsible and that has been done.

As humbling, embarrassing and, in some ways, devastating, as the incidents and process has been, no corners have been cut in an attempt to reach the truth of the situation.

Violations involving Chris Parker

The following is taken directly from the institutional report to the NCAA from GSU.

GSU coaches went through the University of Kentucky Independent Studies Program to enroll Parker in a math course. Evidently, Parker struggled in the course.

Coaches enlisted basketball players Dave Coradini and Jeff Cliett to assist in doing the correspondence course work. Coradini completed the work and took them to assistant coach Mark White. In turn, he took them to Parker to copy onto the original assignment sheets. According to the report, White then collected the completed lessons and sent them to Kentucky ISP via Express Mail.

Kerns and White attempted to find a proctor for the exam, but were unsuccessful. Coradini had difficulty with some areas of the course. He tried to give up working on the lessons and refused to do the final. White insisted he continue to do the work and told him to find someone to do the final.

ESPN report on Parker

The following is taken directly from the institutional report to the NCAA from GSU.

On March 13, 1995 ESPN aired a special which dealt in part with the current national situation

Please see NCAA, page 2

Bike-riding banned from the pedestrian, effective fall

By John Munford
Assistant News Editor

Another step has been taken toward regulating bike riding on the pedestrian as GSU's Facilities Planning Department begins work to install 500 new bike spaces this summer and place signs to inform bicyclists that they cannot ride their bikes on the pedestrian. Bicyclists may walk their bikes on the pedestrian, however.

University Police Chief Ken Brown said no plans have been finalized about how to enforce the possible ban of bike riding on the pedestrian, which would be included in the student conduct code for the 1995-96 school year.

"The original discussion involved ticketing and fining students, but that's not right," Brown said. "We should issue citations which should be turned over to a legislative body of the school for further action."

"There have been a lot of close calls on the pedestrian and a professor said he has four incidents of people getting hit or bicycles hitting one another," said facilities planning architect David Hainley. "We're proposing to get a bike path so you can jut out and zip across campus; that will displace a number of parking spaces. That will be a gradual phase-

in process."

Hainley said how quickly the project progresses depends on how much funding comes through for the project.

"This is a year-end funded project and is not on the budget for next year," Hainley said. "We would have to find some money for next year."

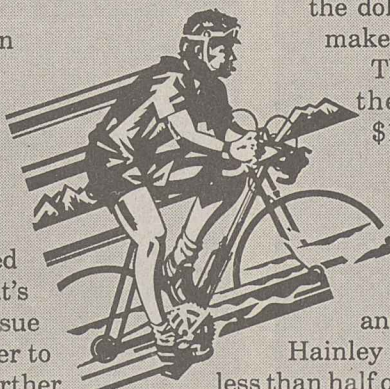
We're going to try to stretch the dollar because we need to make the improvements."

The original estimate for the first phase was \$131,000, which included 1,000 new parking spaces, marking off bike lanes on existing pavement, widening of other pavement and production of the signs.

Hainley said the department goes less than half of that estimate to do the work this summer.

"We have not been given the total amount of funding for phase one, so now we're concentrating on providing the new parking spaces and adding the signage so we can try to serve the need that exists there in some critical crunch areas where we have bike parking problems now."

Please see BIKES, page 10



'Call me the Easter Bunny' Country Club abduction recalled by the victims

By Chris Sherwood
News Editor

The alleged kidnapping of three GSU students and two other men from a local night club May 5, just may stick in their minds as one of Statesboro's most unusual birthday celebrations.

The five victims had left The Country Club after celebrating the 21st birthday of Michael Samples, and encountered the suspect, a 26-year-old Charles Newell, outside of their 1994 Chevrolet Z-71 king cab truck. Newell, from Pine Top, N.C., asked for a ride, the victims told him they did not have any room, so they preceded to get into the truck. Within seconds, Newell brandished his gun and told the victims that he needed a ride.

"He said 'I told you guys I needed a ride,'" Shane Williamson said.

After Newell displayed his gun and entered the truck, the victims knew he was serious.

"I said 'Oh Lord, are we going to get out of this alive,'" said Travis Bennett, one of the victims. "Shane (Michael) Shane Williamson, the owner of the truck. He told Newell to take him hostage and let the rest of them go, but he (Newell) said 'I've got five hostages here.'"

Once the suspect had closed the door and sat in the passenger seat of the truck they attempted to calm Newell down.

"We asked him what his name was, what he wanted to be called," Bennett said. "He told us 'call me the Easter Bunny.'"

According to Bennett, the truck did not have much gas left in the tank, so they told Newell they needed to go to the gas station if they were going to drive him to North Carolina.

After pulling up at the BP station on Highway 301, Williamson got out of the truck to pay for the gas.

Please see KIDNAP, page 10

NCAA

Continued from page 1

involving the use of correspondence courses to establish eligibility for student-athletes. As part of their presentation, they included a brief segment on Chris Parker of GSU.

The ESPN production correctly identified Parker as a former basketball player at Wabash Valley College. ESPN also correctly identified that Parker took a correspondence course from Southeastern College of the Assemblies of God.

ESPN incorrectly left the implication that Parker transferred the credits back to Wabash Valley and then transferred them to GSU. Parker was attending Allen County Community College when he took the course in question according to the report.

ESPN also stated the SECAC course had been paid for by a GSU booster and indicated a possible NCAA violation. Although during its investigation, GSU had looked into this and other correspondence course payments, and had found no wrong doing in this instance, the institution reopened its inquiry according to the report.

The institution identified Roger E. Campbell as the name on the credit card payment for the course in question. Campbell was subsequently identified as a former track coach and current instructor at Allen Community College. When contacted, Campbell said he had used his credit card to order the course for Parker, and that Parker had repaid him in cash within hours.

Parker's exam

The following is taken directly from the institutional report to the NCAA from GSU pertaining to former player Chris Parker.

Associate Coach Mike Backus arranged for professor Alfred Young to proctor the exam. Coaches contacted Kentucky ISP and requested the final be sent. They indicated the initial lessons were being returned. They reported Parker would be ready to take the exam Monday, Sept. 26., but Young would not be in his office that morning. They asked if the exam could be sent the previous Friday.

Backus led Young to believe course materials would be coming in by fax and arranged to pick up the materials when they arrived. On Sept. 22, Kentucky ISP received six lessons and the examination request form. The school then faxed the exam to the GSU history department the same day.

The final was acquired from Young by Backus, who took it to White. Young did not admit to actually giving the exam to Backus. At first he said he thought it was probably on his desk. In a later interview, he denied he was asked to proctor the exam, but simply to give the exam. He noted, through his legal counsel, as proctor he would have been responsible for the exam's security, but understanding he would simply have to give the exam, he would have had no such responsibility for the exam.

Course payment

The following is taken directly from the institutional report to the NCAA from GSU.

On Sept. 23, Kentucky ISP received the next eight lessons and fee payment. The course fee was paid by postal money order. Coaches and Parker say he received the money from home to pay for the course. There is no receipt for the money order.

White gave a copy of the final to Coradini and Cliett. Cliett suggested a friend from his hometown and GSU student, would do the final. She did the work without knowing any of the details or for whom it was being done. On Sept. 26 she completed the final and returned it to Coradini and Cliett, who took it to White. Parker then copied the work to the fax original.

The paper trail

The following is taken directly from the institutional report to the NCAA from GSU.

Backus returned a copy of the final to Young's office when he accompanied Parker to "take" the exam. Young administered the final to Parker and signed the proctor's statement. Before leaving, Backus retrieved Parker's proctored final and proctor's statement from Young. He returned the statement to White, who put it with the previously copied final and mailed them to Kentucky ISP. Backus and White reported the "final" taken in Young's office was destroyed.

On the basis of the course work and final exam, Kentucky ISP issued a passing grade to Allen County on Sept. 29. Allen County graduated Parker who then enrolled full-time at GSU a week into classes.

Backus gives two versions about acquiring the exam. In one scenario Backus claims he used subterfuge to "steal" the exam from Young's office. In another scenario he claimed to "use his friendship" with Young to have him give up the final. The latter story more closely fits Parker's description of things when he arrived to take the exam: Backus was carrying the exam.

Backus handed the exam to Young who proceeded to do what he understood to be his role. Parker never indicated Young showed surprise at receiving the exam from Backus.

Young denied knowing the exam was compromised, but admitted the exam was left unattended on his desk and could have been picked up. Four individuals, White, Coradini, Cliett and Thomas admitted to handling the exam. Whatever the method, it is clear Backus was able to get the final exam from Young.

Kerns involvement

The following is taken directly from the institutional report to the NCAA from GSU pertaining to former Head Coach Frank Kerns.

There was no testimony that Kerns was aware of the subterfuge utilized to compromise the final exam. As involved as he

was up to that point, it is difficult to accept that as head coach he would not have known what was going on. He was either an active participant or he abdicated his head coaching responsibilities according to the report.

First day of investigation

The following is taken directly from the institutional report to the NCAA from GSU.

On Nov. 22, Coradini was asked to come and speak to the investigation committee. A call was placed to the basketball office to determine if he was already preparing for practice. He was still in class and the department was called and asked to give him a message to come to the athletic director's office following his classes.

Coradini was intercepted by White outside the athletic director's office. At that interview Coradini said only that he was tutoring Parker in the college algebra class.

During practice that afternoon, Coradini was urged by White to sign a written statement confirming the testimony he gave during his initial interview. He refused to be pressured into signing the false statement and had serious second thoughts about what he said to the committee.

Coradini requested another interview at which he volunteered a full account of his part in working on the Parker course and final. He told the committee the pressure was put on him by White. He reported that at his initial contact outside the office, White encouraged him to say only that he was tutoring Parker if the interview was dealing with that subject. White said only that he happened to run into Coradini outside of the Hanner Fieldhouse. White admitted only telling Coradini that the committee wanted to interview him and avoided saying if he mentioned anything else.

Ford's Correspondence Course
The following is taken directly from the institutional report pertaining to former player Clint Ford.

Clint Ford signed a Grant-in-Aid and National Letter of Intent with GSU on April 15, 1994. After finishing the spring quarter at Wabash Community College, Ford still needed a science class to graduate. He also needed a college algebra class to meet GSU's college preparatory curriculum standards.

This did not affect his admission status, but without the college algebra course he would have been subject to testing for placement in the remedial program. Because his NCAA transfer grade point average was 1.92, he would need to average a "B" in the two courses.

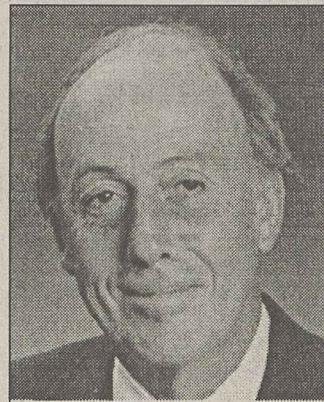
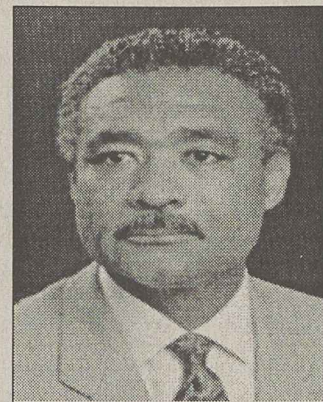
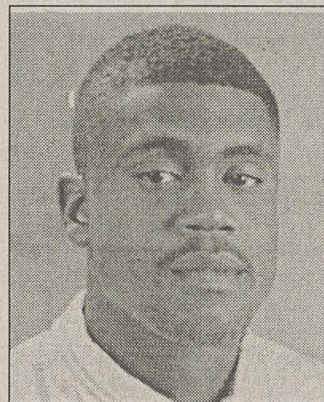
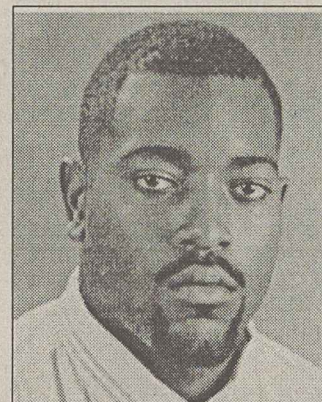
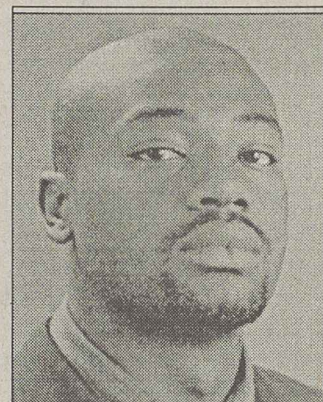
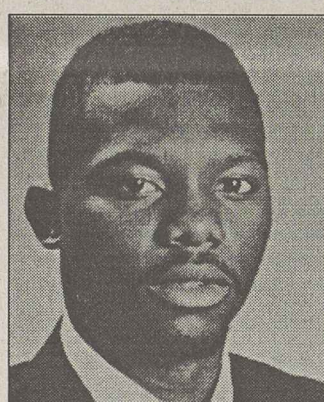
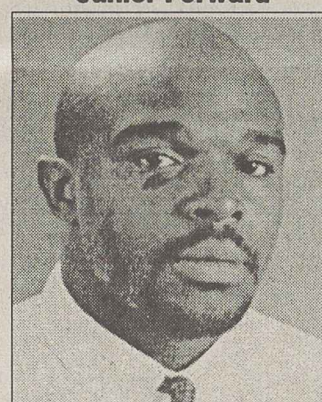
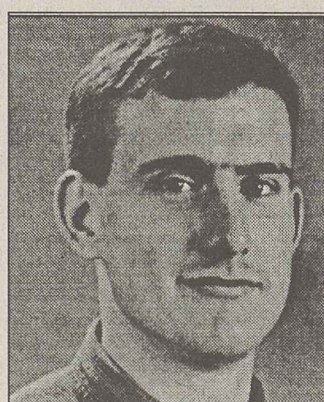
Editor's Note: The George-Anne will continue its coverage of the internal investigation into the GSU basketball program in its Thursday, May 25 edition.



Enoch W. Autry

GSU officials show concerned looks as the confirmation is announced in an upstairs Russell Union room.

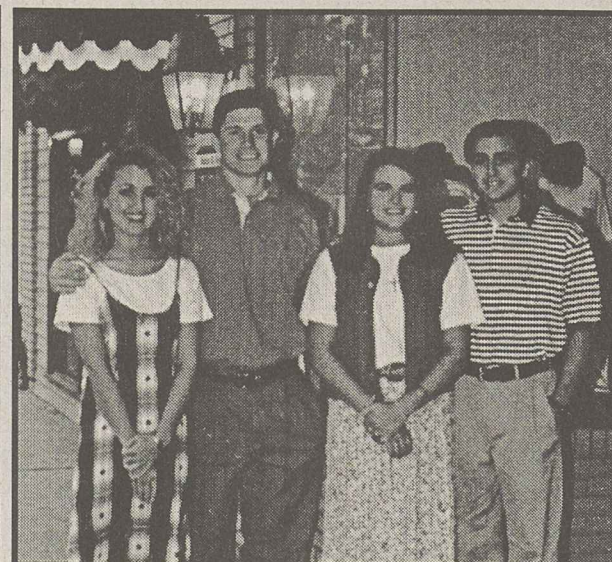
The Involved Parties

Former Head Coach
Frank KernsFormer Assistant
Mark WhiteRestricted Earnings
Coach Mike BackusChris Parker
Junior Guard/ForwardClint Ford
Junior ForwardEmmanuel Christophe
Sophomore ForwardTim Heath
Senior GuardKim Brown
Senior ForwardFormer Interim Head
Coach Doug DurhamJeff Cliett
Sophomore ForwardDave Coradini
Junior ForwardDennis Gruber
Assistant Athletic Trainer

R.J. Pope

Traditional Menswear

COME
CHECK OUT
OUR STOCK
OF SPRING
CLOTHING,
SHOES, &
ACCESSORIES



- TOMMY HILFIGER
- NAUTICA
- TIMBERLAND
- POLO-RALPH LAUREN
- TEVA OUTDOOR SANDALS

R.J. Pope

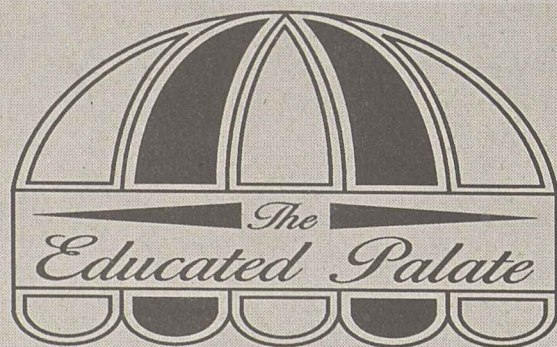
Traditional Menswear
5 S. Main St.
764-4306

The Cobbler's Bench

Specializing in Ladies Accessories, Clothing, and Shoes
7 S. Main St.
764-9498



Checkout these two fine stores downtown



Special This Week
Chicken Cacciatore

with choice of pasta

\$4.75

Check for our weekly Specials.

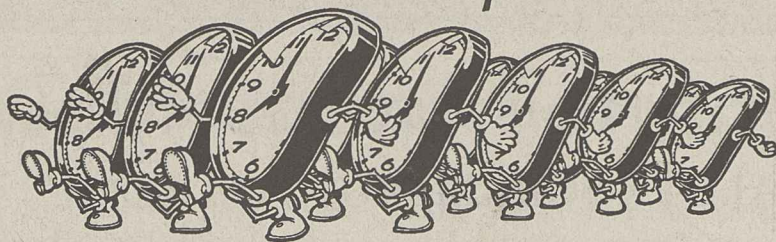
Now selling pizza by the slice, carry out only:

cheese \$1.33 • pepperoni \$1.55

Lunch 11-2:30 Dinner 5-8:00

Call 681-5303

Time Warp!



A Look at Georgia Southern, 10 Years Ago This Week

GSC's 2nd annual Beach Day, sponsored by Pi Sigma Epsilon, Panama Jack and FM 100 was held on Eagle Field. The event featured the original Drifter's band, based out of Athens, as well as a tanning contest for both guys and girls with \$100 prizes to the winners.

The print management department received a three piece Rayne Colormaster, worth thousands of dollars. The Colormaster was given to GSC by Walter Lewis, President of Lewis Printing Company of Statesboro.

The GSC Eagle's baseball team captured the 1985 Trans-American Athletic Conference baseball crown after they defeated the Hardin-Simmons Cowboys 10-6.

— Compiled by Jana Mobley

ONLY IN AMERICA...

1 Florida Spelling error to cost town \$500,000

The Associated Press

CORAL SPRINGS, Fla. — A spelling error that landed the wrong man in jail for 41 days will cost this bedroom community and the police detective responsible for the error \$500,000, a jury has decided.

Donnie Ray Boone was arrested in 1989 after Coral Springs detective Lawrence Cambi pulled up his name in the computer. Cambi had been investigating a car theft and had incorrectly spelled the name of the suspect — Donald Bohn — as Boone.

Even though Boone lived in Orlando, police filed papers for his arrest. When Orlando police stopped Boone on a traffic violation, they spotted the warrant. Boone was booked and handcuffed.

Sent to Broward, Boone served 41 days behind bars before the error was corrected. The real suspect eventually was arrested. For a few days before the mix-up was resolved, the two men were locked up in the same jail, Paige said.

In 1993, Boone filed a civil-

rights lawsuit, claiming his constitutional rights and freedoms were violated. Thursday, jurors in the courtroom of Broward Circuit Judge John A. Miller came back with the verdict: \$245,000 for pain, suffering and embarrassment, \$245,000 for future pain, suffering and embarrassment and \$10,000 for lost wages.

2 Tennessee Dogs get recognition

The Associated Press

NASHVILLE, Tenn. — Has the state's Bicentennial Commission gone to the dogs?

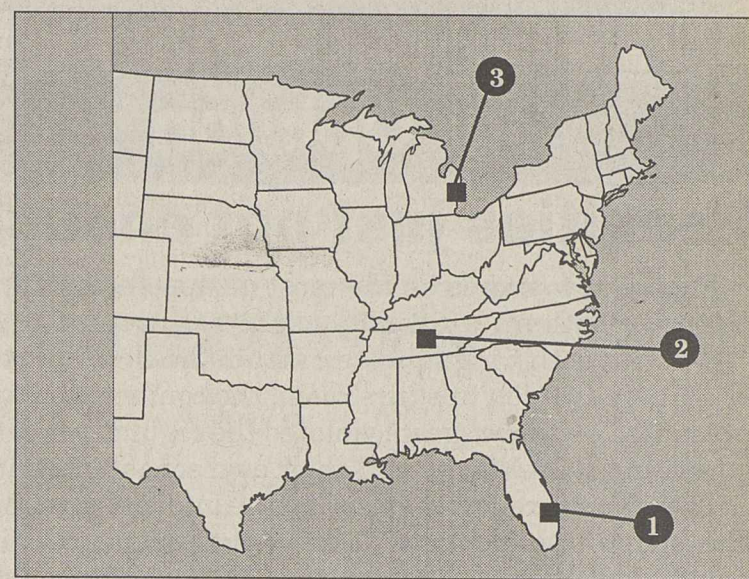
Well, at least for a little while.

The Senate voted Wednesday morning to include Gov. Don Sundquist, his wife Martha and their dogs on the commission, which is planning activities for the state's 200th birthday next year.

A little while later, they removed the provision from the resolution, which urges commission members to use the book "Tennessee State Symbols" during their work.

Last week, Sundquist became embroiled in controversy over Bailey, a dog he took home to the executive residence thinking it was abandoned.

The governor eventually re-



turned Bailey to his 11-year-old owner and adopted two dogs from the Humane Society.

3 Michigan He's dead, damn it!

The Associated Press

DETROIT — George Vandervennet has been dead eight years now. But that hasn't stopped the Wayne County Friend of the Court from trying to collect his alimony payments.

"I can understand being behind in your paperwork, but all that time and money going after someone who is dead?" said Catherine Stead of Westland,

Vandervennet's daughter.

The case is another example of the problems that plague the Friend of the Court, which handles child support and alimony orders.

Vandervennet's family say that every year he receives an alimony payment book at his Livonia home because they have been unable to convince the Wayne County Friend of the Court that Vandervennet is dead.

Friend of the Court officials were looking into the case and hoped to have the problem resolved soon, a spokesman said.

POLICE BEAT

GSU Division of Public Safety

May 17, 1995

•A resident of Olliff Hall reported her purse was taken from the Library.

•An employee of the University Store reported some graffiti on a GSU vehicles.

•A resident of G-56 dorm reported some graffiti on a car parked in the dorm parking lot.

•An employee of the Library reported some graffiti in a restroom and the stairwell.

•A resident of Oxford Hall reported some graffiti on a door at Oxford Wash-N-Shop.

Statesboro Police Department

May 21, 1995

•Russell Adam Patterson, 21, of Lawrenceville, was charged with DUI (.15).

May 20, 1995

•Rebecca Anne Walters, 21, of Tucker, was charged with driving with defective equipment and DUI.

•An affray was reported at Sussex Commons Apartments.

•A domestic dispute was reported at Stadium View Apartments.

•An affray was reported at Player's Club Apartments.

May 19, 1995

•A resident of Park Place Apartments reported receiving harassing phone calls.

May 18, 1995

•A sexual assault was reported at Veazey Hall.

•John Seward Wallace Jr., 23, of Statesboro, was charged with forgery.

•Casey Patrick Murray, 21, of Statesboro, was charged with DUI (.154), violation of the open container law, and making an improper right turn.

•Audrell Johnson, 23, of University Pointe Apartments, reported a case of criminal trespass.

May 17, 1995

•Jan Graham Smith, 25, of Jesup, was charged with speeding, violation of the open container law and DUI (.125).

•A resident of Stadium Place Apartments reported receiving harassing phone calls.

•Rhett Palmer, 22, of Park Place Apartments, reported a case of criminal trespass.

May 16, 1995

•Benjamin Garrett Rodgers, 19, of Eagle's Nest Apartments, was charged with possession of alcohol by a minor.

•Chantrina Jones, 21, of Colony Apartments, reported someone stole her car tag.

Bulloch County Sheriff's Office

May 19, 1995

•Christopher Todd Stiles, 24, of Langston Chapel Road, was charged with DUI (.167).

May 10, 1995

•Jill D. Candler, 21, of Rucker Lane, reported a case of entering auto.

ANNOUNCEMENTS

Things to do at GSU

Ongoing

•Volunteers are needed at the Statesboro Regional Library to read books to children during the spring RIF book distribution May 11 - 23. If you have 10 minutes or more and would like to make a difference in the life of a child, please call 764-7573 or stop by the library to sign up.

Today

Tuesday, May 23

•"Divertimento" will be shown at the Russell Union Theater at 7 p.m. It is a French movie with English subtitles.

•The Symphonic Wind Ensemble will present "The Chamber Winds" at 8 p.m. in the Russell Union Ballroom.

•The Campus Life Enrichment Committee will present Gloria Wade-Gayles, author of "Pushed Back To Strength" from 7-8 p.m. at the Southern Center for Continuing Education Auditorium.

•A workshop on Internet/E-Mail will be held in the Henderson Library. The training session will begin at 5 p.m. in the LRC room 105.

Wednesday, May 24

•The music department presents "Student Brass Ensemble" at 4 p.m. in the Foy Recital Hall.

•The music department presents a special guest faculty performance by Milton Masciadri at 8 p.m.

•The physics department presents a planetarium public show. It will begin at 11 p.m. The doors close at 11:10 p.m., so get there on time. The program will last 30 minutes and is free of charge.

Robin Blake
Carrot Top
Blockbuster
Alcohol Awareness
The Joke Zone
Fun
The Joke Zone
Big Kargies
Earth Tones
Crucette
and
Maher
Rig Time Entertainment
Snack Previews
Hamburger Jones
Wafflers
Forrest Gump
Harlem
Globetrotters
Contemporary Issues
Virtual Reality
Bertie Berry
Rocky Horror
Picture Show
Bonfires
Wingfield
SPLASH

Wednesday May 24
What do you know about issues of homosexuality at GSU?
Come Find Out!
GAY/LESBIAN BISEXUAL PANEL DISCUSSION
Union Theatre 7pm

DAKKOTA
Dinner 4-7:15
Landrum Lawn
DAKKOTA 5-8
Thursday May 25
Country Rock Concert
GRILL OUT
Use Your Meal Plan!

Tuesday & Wednesday May 30 & 31
Red Cross Blood Drive
Williams Center
Tuesday: 10 am - 3 pm
Free Professionally Drawn Caricatures While You Wait (11 am - 3 pm only)
Wednesday: 2 pm - 7 pm

Union Productions Committee Interest Form
Yes! I want to be involved in these committees!!
The Joke Zone _____ Big Time Entertainment _____
Sound Waves _____ Games People Play _____
Contemporary Issues _____ SPLASH _____
Name _____
LB _____
Local Phone _____
For more info on Union Productions call 681-5442 or mail interest form to LB 8066

Coming Soon! APOLLO NITE Take Two

Union Productions
681-0461
Office 681-5442
LB 8066 GSU
Statesboro, Ga 30460

Multicultural Expo
Don Reed
Battle of the Bands
Star Wars Film Festival
Games People Play
Spring Fling
US College Comedy Competition
Fashion Show
Black Awareness
Month
Reggae Fest
Whole World Improv
The Party
Fettucini Brothers

EAGLE RUN APARTMENTS

116 Lanier Drive, Statesboro
Offering 4 Bedroom Apartments

"featuring"

- refrigerator w/ icemaker
- microwave oven
- washer/dryer
- dishwasher
- cable hookup in each bedroom
- telephone hookup in each bedroom
- 2 full baths with 2 vanities in each

Call Bob Fogle at 581 - 5637
Owner is a licensed Real Estate Agent.

Our Opinion

Penalties just not enough

Friday now stands as the most disappointing day in Georgia Southern University basketball history.

Before a gathering squeezed within the close quarters of a Russell Union upstairs room, the confirmation was presented — the program violated the regulations of the governing NCAA body, and their own school integrity.

The 50-page report released by the internal investigation committee displayed 1,000 hours of meticulously painstaking work. The look into the ongoings of the basketball program not only unearthed the truth behind what three commendable individuals disclosed in November, but also brought forth knowledge of food, lodging, telephone calls and cash payment violations.

The committee must be commended for completion of their difficult task of interviewing and compiling, but the suggested NCAA punishments by the members leaves a void in the conception we, as an institution, should be attempting to achieve. Our school of higher learning continually stresses the notion of progressing into the future as one of the most premier in the South, but the self-imposed sanctions against the basketball program do not illustrate our progression.

GSU imposed 10 penalties against itself with four of which the most major. First, reduction of scholarships will be from 13 to 10 next season and a reduction from 13 to 11 will be set for the 1996-1997 season. Second, implementation of a show-cause procedure for former coaches Frank Kerns, Mike Backus and Mark White will be enforced. Third, there will be a forfeit of games played with the illegal players. Fourth, a probation period of two years will be set; during the 1995-96 season, GSU will not be allowed on regular season television. These penalties and the other six, only scrape the surface in redeeming this university to the pedestal it once graced.

The committee reflected on the prior sanctions imposed on other schools with nearly identical situations for guidance, but they needed to take another step forward.

To show that this institution truly wants to prove itself, the committee should have also requested for exclusion from the Southern Conference tournament for two consecutive years. This penalty would also include being omitted from television for those years.

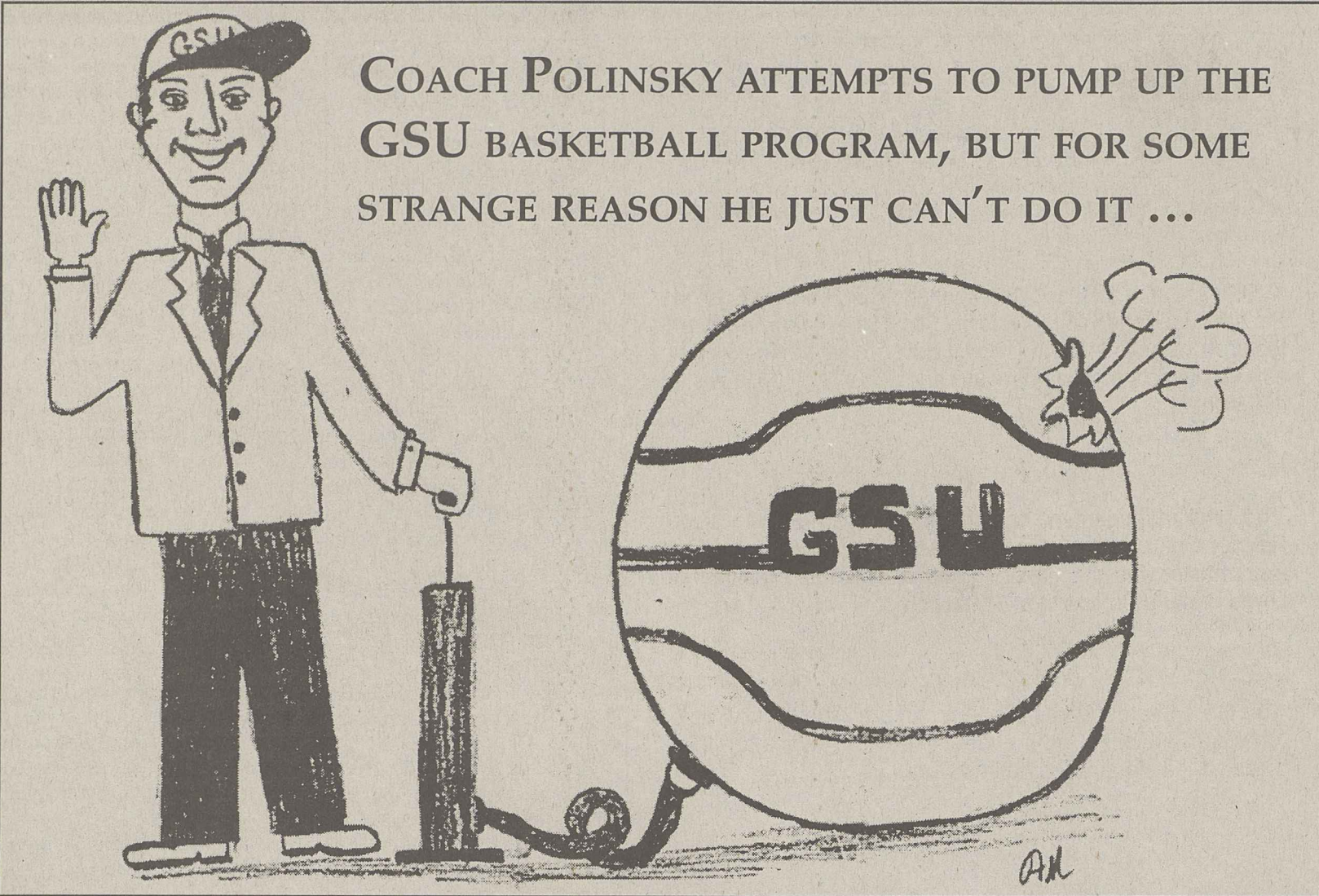
The new program

This additional punishment is not meant to cast more conflict in the uphill battle Gregg Polinsky will face as next season's head basketball coach — what it is meant to do is solidify our institution as one who knows when wrong has been done and accepts the consequences.

Polinsky comes to a program that has come off the worst mark since the 1980-1981 season with a lowly 8-20. This record fixated around the resignation of three coaches and the immediate introduction into the head job for Doug Durham, the then-remaining assistant coach.

Durham seemingly is gone from the GSU basketball picture and the others are nonexistent in the eyes of the program, but Polinsky is left holding the bag of deceit.

The only one that can and *will* make the final decision in this whole scenario is the NCAA. But it should not be beneath GSU to prove to the governing officials this institution will punish itself to the utmost to verify no such violations will happen again.



Alternative is needed before the bike ban

Since Friday, my mind has been bombarded with the trying to bring the most accurate information about the NCAA-GSU basketball situation to our readership. Through this time span, I have constantly been processing a methodical battle between our institution and the big guys. And after all my deliberation, I have come to simply one conclusion — NCAA truly is a four-letter word.

Because of the athletic scenario, I had almost forgotten about the banning of bicycles from the Pedestrium entirely. It would not be incorrect to state that some on this campus wished I had forgotten the issue, but there is a majority who will be sincerely grateful for my remembrance.

The proposal submitted for insertion into the "Student Conduct Code" was taken back in an attempt to reword the policy, but a brief explanation of the bicycle ban goes as follows: *you can ride your bicycle to campus, but you must lock it up to an available rack. Bicycles are not allowed to be ridden on the Pedestrium, but individuals can walk their bikes instead.*

The proposal will become effective fall quarter.

I am all for safety. I believe everyone should wear their safety belts. I believe small children, or adults for that matter, should not stick their tongues in light sockets. I believe in going indoors during a lightning

IN THE EDITOR'S OWN WORDS

ENOCH W. AUTRY



storm. And I believe individuals should feel safe when they walk on our campus. But I do not, nor will I ever, believe in punishing an entire group without giving them a commendable alternative.

The new proposal does not give such an alternative.

Hell's Angels-type bicycle riders do exist on this campus. They speed along "merrily," if those types actually do anything "merrily." They dive in-and-out of traffic at a rate rivaling that of a slalom skier on the downhill. Occasionally, there is the unfortunate mishap when the speed cyclist and a pedestrian collide (normally the walker gets the worse end of the deal). But these are only *very* isolated incidents.

For the most part, the bicyclists are rather courteous, even when they are in a mad dash from the North Building to the South Building (a distance that is nearly impossible to make walking within the 10-minute maximum). Why is there a need to sanction, if I may use one of those NCAA words, bicyclists just because they want to get somewhere? And the most obvious question to follow would, of course, be where can the bicy-

clists ride if they are outlawed from red and black bricked road?

Now, there is a suggestion to build a bike path for those who would like to use their Huffys and Schwinn's as a viable mode of transportation. This is a novel idea. No, please let me take back that remark. It is the perfect idea. But with all ideas, there is a drawback and this idea can be lumped into that Mt. Everest-sized pile of drawbacks — the path will be one of those "down the road" projects.

A lot of sensitive areas must be addressed.

The most pertinent, is how will the campus react to being told not to do something that has ongoing since the Pedestrium was constructed?

No one can be totally sure what the campus will necessarily gain from having their Pedestrium riding privileges revoked, but it is simple to figure out what the campus will lose from such a removal — they will not have anywhere to ride, which, in turn, will make them late for class.

Just how does Georgia Southern plan to enforce the don't ride on the Pedestrium policy? The President's Council, which is composed of the GSU President

and all the Vice Presidents, hears proposals that supposedly will enhance this place we like to call "Home."

The banning idea came through that council, where it is still being finalized. Now guess who gets to protect our wonderful walkway from mean 'ole bicyclists? That's right. Mr. Ken Brown and his crew at GSU Public Safety. This is a crappy job to stick with someone. I understand if someone wants to try and give Mr. Brown the worst job at GSU — a title held for four straight years by Bob Chambers — but be realistic.

The law enforcement of our campus should be keeping tighter security on buildings and watching for DUIs. They should not be chasing students around on their \$1,000 bicycles to get them off the Pedestrium. By the way, wouldn't those police bikes also be disallowed?

We pay \$45 a year to park our automobiles on campus. Maybe this total does not compare to other college parking rates like those \$75 "deals" that in California, but it is still pretty steep.

How does the typical student solve this money problem? He or she rides a bicycle.

Now as of fall, students will have the opportunity to walk their bikes on campus just like their dogs.

I suppose the bikes will be a little less temperamental, but will the students be when this policy is enacted?

The ocean: so big, so beautiful, so peaceful

I spent some time at the beach this past weekend. With it nearing the end of the quarter and having so many projects to complete (four papers) and a whole bunch of work to do, I shouldn't have gone.

But I needed to.

I love the ocean. It's so peaceful and relaxing. These last couple of weeks have been so hard on me. So many deadlines and no time. I needed the break.

I spent all day Saturday and Sunday morning on the beach. I love hearing the roar of the ocean and to feel the incoming waves trickling at my feet. It relaxes me and makes me forget everything. Nothing is important but that moment; the moment when I am standing there staring out at that huge body of water that stretches for miles upon miles.

The ocean is so big and so endless and so beautiful. It is such a big part of the world and we don't really know it. The ocean does something for me.

For a time, when I was there looking out at the ocean, I got a great sense of peace and happiness.

THE LIGHTER SIDE

ASHLEY HUNT



When I left for the weekend, I was so worried about everything. Worried about getting all my school work done and my work done at *The George-Anne*. I have so much to do and that's all I could think about and talk about. It nearly drove my boyfriend crazy. He said that's all I talked about on Friday, and he was right. So on Saturday, I took a walk on the beach all by myself to think about everything.

During my walk, I stopped to stare out at the ocean and listen to the sound of the waves hitting the shore and to the children screaming and splashing in the water. I closed my eyes and felt the wind blow my hair and just stood there for several minutes just listening to the ocean.

In that moment, I let go of everything — work, school and anything else that was bother-

ing me.

Then I opened my eyes and smiled. I felt happy for the first time in weeks.

There really isn't anything special about the ocean. It's just a big body of water.

But to me it's more than that. It is something great and powerful, and it has quite an effect on me. When I was there at the ocean, I felt a great sense of peace, love and God.

A famous person once said that the ocean was like the love of God, that it was the greatest component of our world even though we don't see it a lot of the time.

That's true.

Looking out at the ocean, I see this. Yes, the ocean is big and vast, but so is the love of God and that gave me peace too.

As the weekend neared an end,

I didn't want to leave. The only thing I had to come back to was work and school, things that frustrate me and stress me out.

I almost thought about not coming back,

I wanted to stay by the ocean where it was relaxing and peaceful. There were no deadlines or papers to write at the beach. It seems my life at school is always about deadlines and homework. There it wasn't. For the short time I was there, I could forget my life at school and my job. The temptation to just forget everything back at school was appealing to me.

But I couldn't do that. I took one last look at God's beautiful creation Sunday morning before I left and prayed to the Lord to help me get through this week and help me to do the best I can in my work and school.

And He will.

I can't wait to go back to the ocean. I'll probably go back sometime this summer. Only three more weeks of school.

Somewhat I think I can make it.

I know I can.

STAFF

NEWS

Copy Editors: John Klutz; Anna Murdock; Layout Editor: Mandy Crews; Assistant News Editor: John Munford; Senior Staff Writer: Kim Wagner; Staff: Jan Boulware, Stacy Jordan, Stephen Kirven, Jana Mobley, Melanie Weinberg, Meredith Whitt

FEATURES

Features Editor: Ashley Hunt; Arts & Entertainment Editor: Josh Bass; Senior Staff Writer: Derek Lewis; Staff: Erika Anderson, Eric Bray, Stacy Clemons, Judith Cunningham, Kwaseera Dixie, Suneae Euell, Chris Hall, James Salter, Tijuana Thomas

SPORTS

Sports Editor: Jeff Whitten; Senior Staff Writers: Scott Garner, Ronnie Swinford; Staff: Scott Cullen, Mark Harrington, Tonya Hilton, Josh Nunez, Aaron Solomon, Carolyn Wynn

OPINIONS

Staff: Josh Bass, Christopher Cole, Julie Collins, Ashley Hunt, Derek Lewis, John Munford, Jana Newsome, Amy Staats

PHOTOGRAPHY

Chief Photographer: James Hill; Staff: Sarah Brinkley, Darryl Jones, Michele Hess, Jerome New; Contributing Photographers: Ronnie Swinford, Randy Trujillo

ARTWORK

Leigh Braddy, Shawn Chavis, Adam Nelson, Anna Murdock, Michelle Underwood

CIRCULATION

Supervisor: Steve Tallaferro; Staff: David Hillis, Bruce Karr, Scott Newton

ADVERTISING/DISTRIBUTION SERVICES (ADS)

Advertising Manager: Brooks Clements; Business Manager: Stephanie Wylie; Marketing Coordinators: Rob Gayle, Jana Mobley; Sales Representatives: Tonicia Anderson, Leigh Braddy, Melissa Goodman, Steve Keller, James Salter, Heather Turner, Stacy Wood, Carolyn Wynn

PRODUCTION AND GRAPHICS EDITORIAL SERVICES (PAGES)

Production Managers: Ron Lair, Scott Mulkey; Staff: David Beck, Aquila Bookhart, Tamara Gilbert, Mitch Mitchell, Blair Schultz, Shawn Sunderland, Monica White; Classified Ads Manager: Melissa Goodman; Darkroom Manager: Randy Trujillo

STUDENT PUBLICATIONS COORDINATOR

Robert Bohler: News, Editorial Advisor; Bill Neville: General Manager

Your Opinion

Coincidence or conspiracy?

Dear Editor,
The latest headline to come "out of Africa" is about the deadliest disease called Ebola that is consuming a remote town in Zaire. This has been the leading news on major Western media outlets including newspapers and television.

If this was not enough, May 1 a few days before the actual virus was detected in Zaire, one of the major networks (NBC) aired the movie "Virus" which was about the breakout of the same virus (Ebola) that was originally detected in a small town in Zaire. Interestingly enough, over the last Christmas season, "Outbreak" a critically acclaimed movie about the spread of the deadly virus Ebola throughout the United States (brought from nowhere else, but once again Zaire) was also released. Is this just coincidence or conspiracy?

It is mind boggling and upsetting to some to even think that the U.S. government will even take part in a conspiracy to cover up the spread of a deadly disease, but it is my contention that the government had something to do with the airing of the show May 1, and conveniently leaking news about the outbreak in Zaire. Call it a rating war or a mere circumstantial coincidence, there had to be

more than that.

The U.S. government had a history of using minorities as guinea pigs for the "sake of medical advancement," and there is a documented proof that African Americans were injected with Syphilis bacteria and Native (Indian) Americans were subjected to the inhumane treatment of being given blankets that were covered with Small Pox. Having said this, I am in no way suggesting that the U.S. government deliberately injected the Ebola virus, but I would not be surprised if the government had used the people of Zaire as "experiment materials" to see the effects of the virus.

It is also no coincidence that the first case of the AIDS virus was spotted on a Green Monkey, and was isolated in nowhere other than Zaire. Can somebody explain this as mere coincidences or is Zaire such a "cursed place" all the deadliest viruses reside in that part of the world?

One of the characteristics of the Ebola virus is its swift ability to mutate and change at a faster rate. That is one of the main reasons that researchers are having a hard time dealing with and finding a cure for. In my opinion, the virus alluded researchers by mutating into a different form and was able to hide itself for a longer period of time.

By saying this, the government may have opened up a Pandora box, and is trying to contain what it had originally created. Therefore, I think there is a lot more the government knows than it is originally telling the public.

I must admit that this is not a researched analysis of the crisis nor do I have the scientific data to back up my arguments, but this past few days I have been wondering about these extraordinary coincidences, and felt like putting my ideas where my mouth was.

I am not by any means trying to take away the magnanimity and the human factor of the situation, but I thought I would kick up some dust and see where it would settle.

Today where the perception of Africa among Americans is a mythical type like that of a "National Geographic" outlook, and this type of media hype is one more blow to the ego as well as the image of the Africa as a whole. In addition, this type of "media circus" is a leading factor which may help perpetuate the poor understanding of a whole continent where both man and civilization originally started.

N. Feleke
Graduate student

Thanks for Awareness Day help

Dear Editor,
I would like to take this opportunity to thank the students that helped make the second annual Disability Awareness Day such a resounding success. Over 50 Gamma Beta Phi donated a total of 110 volunteer hours, 10 very brave Pi Kappa Alphas met a professional wheelchair basketball team on the court in Hanner, and 30 volunteers from REC 356 gave 62 hours of service.

Others that made the difference include Hal Fulmer who announced the wheelchair basketball game, Joe Blankenbaker and Bobby Sparks who played tennis with Officer Glenn McIntyre, the Russell Union staff who provided all the AV equipment, tables and chairs, and the 15 members of the Disability Awareness Day Committee who had been working since February organizing all the events. Special thanks also goes to the Vice Presidents of Academic Affairs and Student Affairs who provided funding.

One of the main goals of Disability Awareness Day is to en-

courage the public to focus of abilities first, not disabilities. I am convinced we met that goal.

Sue S. Williams
ADA Compliance Officer

Stadium Club

Now Leasing For Fall '95

- * *Lowest Rates on Campus*
- * *Flexible Leasing*
- * *Fully Furnished Apartment*

(912) 681-2437

The Eagle Print Shop

"on the loading dock"

Located across from the Russell Union in the Williams Center

For All your copying
needs and MORE



- Color Copies
- Banners
- Posters
- Plain Paper Fax Services
- Lamination
- Transparencies
- Invitations
- Business Cards and more

Phone : 681-5697
Fax: 681-0795

LETTER AND SUBMISSION POLICY

The George-Anne welcomes letters to the editor, story submissions and guest columns from people both inside and outside the Georgia Southern University Community. All copy submitted should be typed (double-spaced, please), preferably on Macintosh disk in Microsoft Word or Microsoft Works format. All submissions must be signed and include a mailing address and phone number for verification. The editors reserve the right to reject any submission. There is no word limit on submissions. A writer may request to remain anonymous. However, it will be the editor's decision whether or not to print the name. Submissions are run on a space-available basis.

Someone with a little power: change it

Dear Editor,
OK, before I get up on my little soapbox, let me just say that I don't expect any drastic changes to come about because of this. I just felt that it was time someone spoke out against food prices and quality here at GSU. Hopefully, in the future someone with a little more power (hint, hint) will be able to make the changes that I, a mere student, cannot. With that said, let me begin.

First off, let me start by telling you that my meal plan (which I am required to have as a freshman) means the world to me. I rarely have any cash since I'm jobless, so that \$3.50 feeds me twice a day, everyday, and I am thankful for that. What disgusts me though is how little \$3.50 gets me on the GSU campus. Am I the only one who notices that we have to pay 85 cents for a tiny cup of Coke filled with ice? Keep in mind that 50 cents spent wisely in any vending machine will get you twice that amount. What about paying \$2 for a hamburger? Just stop for a second and think

about what kind of hamburger you could get at McDonald's, Wendy's or Checkers for \$2. Hmmmm ... how does this compare with the quality of a GSU hamburger? Not too well kids, not too well.

Now, don't get me wrong, I'm not saying there aren't any bargains at GSU. Heck, we all know what a steal Landrum is when you're talking about quantity. But what about quality? Bland, lukewarm and reused Landrum food doesn't quite hit the spot. When I see leftover breakfast served at lunch and eat dry, week-old brownies I can't help but feel a bit disappointed. Oh well, at least the ice cream is good right? Still another great example of GSU bargains is in combos. If you choose to eat at Lakeside or Union Station, they're unavoidable. My only big problem with combos is that they all come with French fries. I hate French fries. Although I realize that the combos can't revolve around my taste buds, I don't understand why I can't substitute a piece of fresh fruit or a

small dessert in place of the French fries. Unfortunately I don't have that option ... I either get the combo with the unwanted fries or pay \$3.50 for a burger and a little Coke.

My final complaint deals with the food prices at Oxford Wash N Shop. Anyone who has ever used a meal plan there knows what I'm talking about. The mark-up on MOST items is two to three times what you'd pay at the grocery store. Now realize they are providing us with convenience, and I appreciate that, but the overpricing is ridiculous.

Did someone forget to tell them what we're college students? Also, not to get off the subject, but why can't I buy candy bars with my meal plan there? After all, it is MY meal plan right?

With all this said, I step down from my soapbox in hops that you, fellow GSUers, will start standing up for yourselves. They have to listen to us eventually.

Kiersten Trinoskey
freshman

Thanks

The Oklahoma City bombing affected families not only in the Midwest but also families across the nation. Individuals from far and wide mailed monetary support for the victims and GSU also assisted in the effort. An advertisement requesting assistance for tragic event that ran on *The George-Anne* classified page for nearly a month gained the attention of those affiliated with the GSU community. Because of that advertisement, *The George-Anne* will be able to send over \$200 on behalf of our institution. We thank those you gave and we will be mailing one large check to the Disaster Recovery Fund from our school. Even if you were unable to make our May 21 deadline, we will still be happy to accept your donations and we will send those checks off as we receive them.

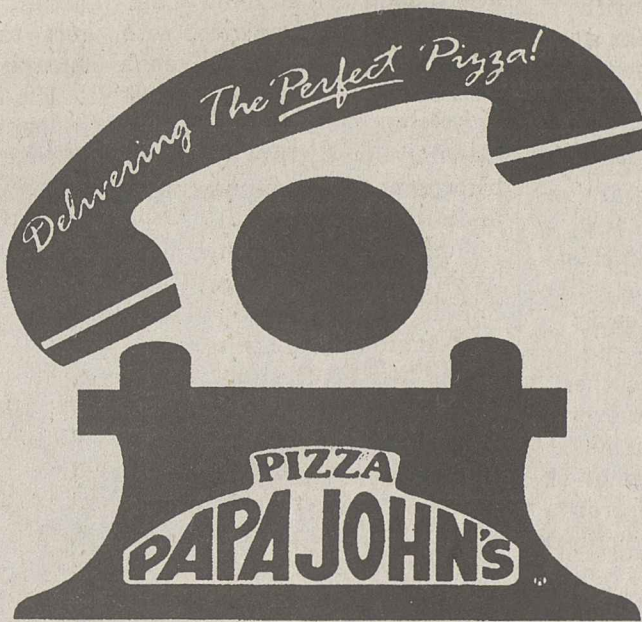
Thank you,
Enoch W. Autry, editor, & other staff members of *The George-Anne*

HOT OFF THE PRESS!

ATTENTION GSU WRITERS

The George-Anne is looking for a few dedicated writers. There are positions available in News, Features, Sports and Opinions.

If you are interested, stop by RM 223 in the Williams Center and pick up an application.



871-PAPA
(7 2 7 2)

Fast • Hot • Perfect

Pizza

FREE DELIVERY • CARRY OUT
620 FAIR ROAD

Two Large
Pepperoni Pizzas

\$10⁰⁰
Plus Tax

Additional Toppings 95¢ each
Not valid with any other coupon
Valid only at participating stores
Offer expires 6/6/95

Perfect Brunch or Late Night Munch
One 10-inch Pizza,
Two Toppings & Two Drinks

\$5⁹⁹
Plus Tax

(Mon.-Thurs. 11 a.m.-4 p.m., 6 p.m.-close)
Additional Toppings 70¢ each
Not valid with any other coupon
Valid only at participating stores
Offer expires 6/6/95

Preview:

A look at Eagle football opponent S.C. State will run in Thursdays G-A.

THE SPECTATOR

JEFF WHITTEN

Biological diversity, or nature's little practical jokes?

The following exchange took place during a recent deadline night:

Enoch Autry: Where'd those two dorks go?

Scott Garner: Which two? There are a lot of dorks up here.

The baboon has fur just about everywhere, but has been left entirely bare-assed (learned this via a startling documentary — it made me spit out my drink — on the Discovery Channel) by the misfortunes of genetics.

But why, for chrissakes? Why load an already ugly monkey up with fur, then leave his butt bald, then color it a cross between hot pink and wild purple? And sometimes go even further by adding stripes?

What natural function can that possibly serve, other than disgusting Baptists?

Easy. Nature is an inveterate prankster. The kind of guy who'd paint your toenails if you passed out first.

But. Maybe I'd do the same thing, were I nature. Except rather than pick on innocent apes, I'd de-fur democrats. And a certain football coach.

Nature had her fun with me, giving me a body like a short, skinny-legged used car.

Not that I'm complaining.

Nature got one of my ex-girlfriends by giving her Flintstone feet; i.e., square feet, and that includes toes. (Her feet are about six inches long and six inches wide, a fine example of Flintstone feet.)

Look closely enough and you'll see examples of mother nature's sense of humor everywhere. They're all over this campus (how else to explain el presidente?), but might grow thickest in the cluttered offices of this newspaper.

Take a certain sportswriter as a for example.

This sportswriter's chest will only grow hair on one side. And only hideous, matted, crinkly, filthy hair at that. Alpaca-sweater hair. Hair camels wouldn't be caught dead in.

Worse, it looks like he shaved the left half of his chest, then grew an unholy afro of this awful stuff on the right half.

What might be wrong with the guy's left armpit, if it chased all the hair over to the other side of his chest?

What mutated little leaky spool of genetic goo went bananas? What chromosome ran amok, and why?

(Note: A bunch of us were discussing nature's practical jokes when said sportswriter raised his shirt and shouted "you think square feet are weird, look at this!" I think I answered with something like "Egads. Go away.")

And then there's Southeast Ga., home to a strange, swamp-gassed ecosystem crammed full of weird wonders: the mysterious monkey manboy of Ludowici, who lives in trees and screeches profanity after dark; the three-eared, 12 earringed cashier in Jesup, a rock throw from the Altamaha River; the Midway goat who looks like Dan Rather after an all-night bender; the proliferation of talking snakes; a dead fish who reads palms. Amen.

The George-Anne Sports

Statesboro-Bulloch County Softball

The Statesboro-Bulloch County Parks & Recreation Department is hosting "Memorial Day Classic" softball tournament May 27-28 at Mill Creek Park. Teams should be sanctioned with the American Softball Association prior to registration. Entry fee runs from \$125-\$135 per team, and the deadline is May 25. Contact Ronnie Melton or Danny Hedrick at 764-5637 for more information.

Basketball team to lose scholarships

By Scott Garner
Senior Staff Writer

After the smoke had cleared and the official investigation into the actions which precipitated the resignation of three GSU basketball coaches had been completed, GSU's investigating committee was left with only the task of assigning penalties to the men's basketball program.

These corrective actions and penalties occupied nine pages of the report submitted to the NCAA Friday. The penalties revolved around, but were not limited to, a three-year probationary period, a scholarship reduction and a one-year regular-season television sanction.

These actions, in addition to the stricter rules in place for junior college transfers and the acceptance of correspondence work, go above and beyond the resignations of Frank Kerns, Mike Backus and Mark White.

The committee began with a set of "corrective actions," which included a policy of looking closer at their junior college transfers. Southern has relied heavily on the use of JUCO players in past years. Dante Gay and Tim Heath were only two of five junior college transfers who played in the



Enoch W. Autry

Cable stations directed their cameras toward Friday's panel members as GSU representatives watched.

1994-95 season.

Junior college players will also be denied the use of correspondence courses to obtain eligibility to play at GSU except in extreme circumstances. Even then, faculty athletic representative will arrange the test.

The greatest effect on the basketball team may be felt by the reduction in scholarships. GSU will only have 10 grant-in-aids

available for the 1994-95 season, but Athletic Director David "Bucky" Wagner reported Friday that new head coach Gregg Polinsky's recruiting efforts have already exceeded that limit.

"All of those men may not qualify academically for the grant-in-aid," Wagner said. "If they do all qualify, then we will make an appeal to the NCAA, because I do not want to take

away [a grant-in aid] that has already been promised to a young man."

With sophomores Lonnie Edwards and Emmanuel Christophe reportedly leaving the program, Polinsky must fill holes. Eight new players have been signed through JUCO and high school graduation.

In a previous interview, Polinsky said he would not stop

the recruitment of high school players just because one student-athlete cheated on a SAT test; one does not represent them all.

Finally, GSU will not be televised during the 1995-96 regular season. GSU will not be banned from television play during either the Southern Conference tournament or any potential NCAA tournament games.

GSU is not banned from post-season play. The Eagles' probation means only that they must report to the NCAA each year, not that they are restricted from a post season appearance, according to Faculty Athletic Representative Lane VanTassell.

"If the question is 'did we temper justice with mercy,' the answer is yes," said President Nicholas Henry.

Polinsky seemed pleased with the progress of the internal investigation committee in a prepared statement released to the media Friday.

"I appreciate the integrity the university showed in conducting this investigation," he said. "I am very excited about the potential of GSU men's basketball. There are many positives in place to help build the framework for the future success."

PROFILE

Four reasons to watch GSU football in 1995

By Carolyn Wynn
Staff Writer

The 1995 football season marks the 10th anniversary of GSU's first NCAA I-AA national championship. None of the current members of the team has ever played on a national championship team. However, with the added talent of this year's freshman class, the fans may get to see another national championship flag fly over Paulson before this group of young men leave in 1999.

Four players to watch are freshmen Ronald Sloan, Carl Smalls, Cloise Williams and sophomore Lonzel LeGrant.

The life of a freshman football player is a difficult one. In addition to the regular pressure of freshman year these guys have to get used to the competition for their positions, fall/spring practices, year-round workouts, study hall and, sometimes 6 a.m., or sunrise, workouts.

Ronald Sloan

The first of this group to look for is Sloan, a 6-1, 250-pound defensive lineman from Augusta, Ga. Sloan comes from a military family and is the youngest of three children.

He has not declared a major yet but says he has an interest in computers. Sloan says his biggest influences are his parents.

"They work hard to give me opportunities they didn't have," he said.

Sloan was recruited by Clemson University, Eastern Kentucky University, The Citadel, West Point, Morehouse State College and Savannah State College, but says he chose GSU for two reasons: he felt could contribute more here and he was very impressed by his recruiting coach, Clifford Lewis. Lewis has since left GSU to coach at his alma mater, Mississippi State.

Sloan said his strengths are his dedication, patience, and he is easy to get along with. However, he said he wishes he was a little more outgoing.

In his free time he enjoys playing Sega, drawing, listening to music, dancing and having a good time with his friends.

"I don't consider myself an athlete," Sloan said. "Football is something I do, not who I am. Most people define themselves

by what they do. I don't and that's what sets me apart."

In this year's Blue/White game, Sloan was one of the White team's defensive leaders with five tackles.

"I did okay. I could've done better," he said. "I could've made more tackles and put more pressure on the quarterback."

His individual goals for next

Although recruited by Florida, Florida State and Miami, Smalls decided on GSU because he liked the Eagles' offense. It was similar to his high school's option offense. Another reason was Smalls' size and speed meant other schools wanted to move him to a defensive position.

Smalls, an only child, said his biggest influence is his mother

negative and turn it into a positive.

"Being a student-athlete is difficult," Smalls said. "A lot of preparation, mental and physical, goes into your performance both in the classroom and on the field."

Smalls has not declared a major yet, but said he is interested in criminal justice. It's an

physical therapy.

"I enjoy helping people. I think that can be my way of giving back," he said.

His biggest influence is his grandmother. He described himself as a low-key person with a work-hard attitude.

On the field Legrant's strength is his speed. He has a 40 time of 4.55. Legrant said his weakness is his lack of upper body strength.

He described his walk-on experience as difficult, but worthwhile, and thinks the season will be successful.

"We have the talent, we just have to stay together as a team," he said.

Cloise Williams

Last but not least is Williams, a 6'0 235 pound middle linebacker from Sylvester, Ga.

Williams' influences are his mother, Martin Luther King, and Lawrence Taylor. Williams is the oldest of five children, with two sisters and two brothers.

He spends his time away from football playing basketball, card collecting, and playing Sega. He described himself as a generous, lucky person with a lot of opportunities.

Williams said his strengths on the field are size, physical strength and drive. He says his weakness is his fear of failing.

"I came to GSU because of its reputation in academics, its tradition in football, and because it wasn't far from my hometown," he said.

Williams is looking forward to next season, hoping it will be a winning one.

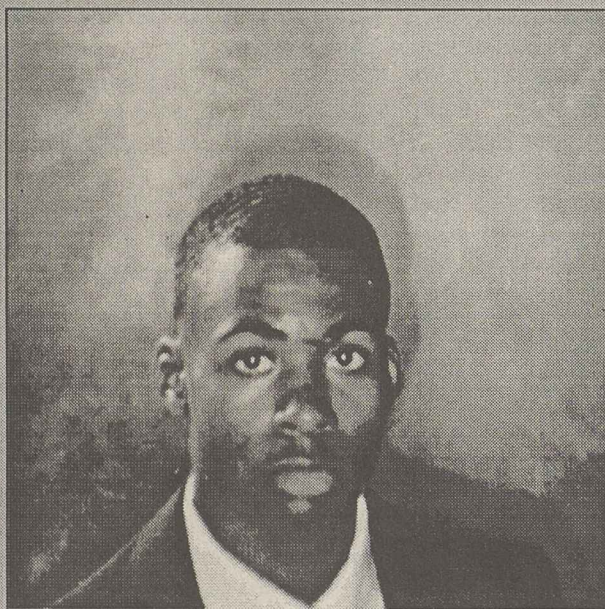
"I am ready mentally, but not physically," he said. "But the main focus right now is another Southern Conference championship."

Williams is considering a career in middle-grades education.

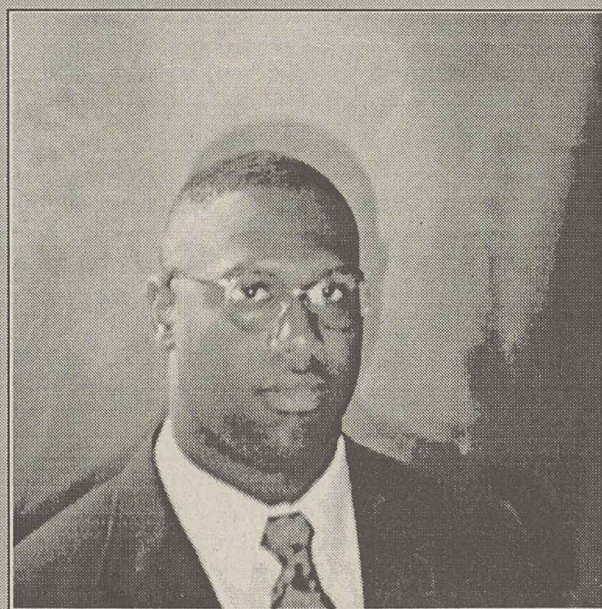
"I think I can have the most impact on kids in the middle grades," he said.

His goals for the gridiron are to be successful and be a champion.

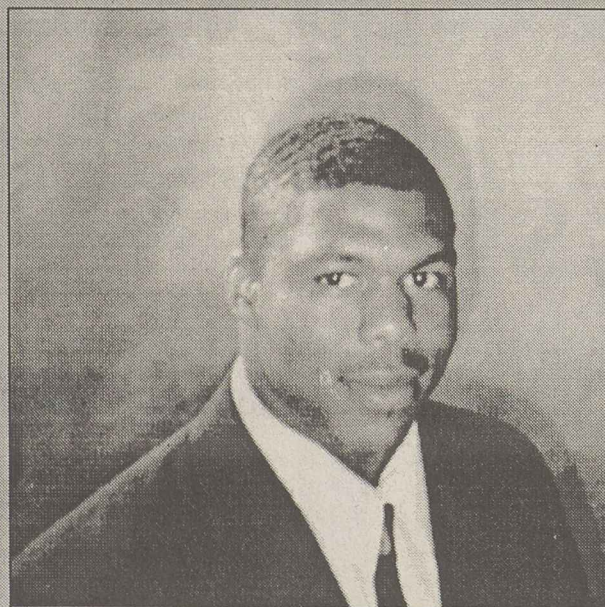
These four men have started to forge a place for themselves in Eagle football and have given Eagle fans four more reasons to hold on to dreams of returning to the championship circle.



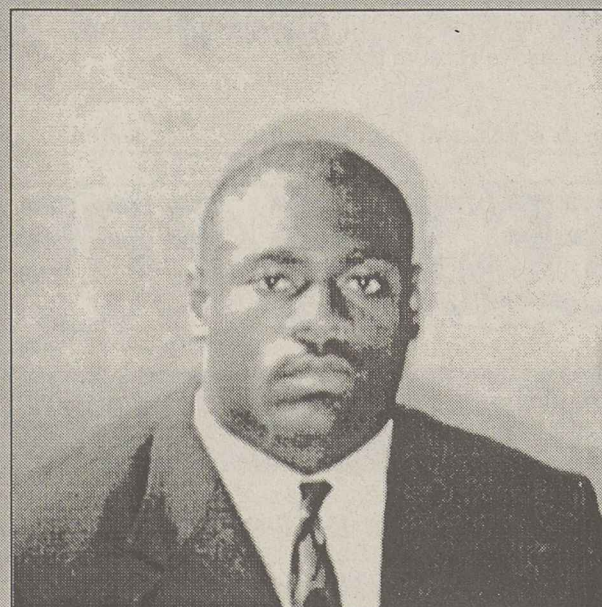
Lonzel LeGrant



Ronald Sloan



Carl Smalls



Cloise Williams

year are to continue to improve his skills on the field. Teamwise, he would like to see GSU return to its dominating presence of previous years, and to hopefully bring home another national championship. Sloan will wear jersey number 92 next year.

Carl Smalls

The next freshman to watch is Carl Smalls. Smalls is a 6'0, 210 pound runningback from Tampa Bay, Fla.

and uncle.

"My uncle is more like a big brother," he said.

Smalls described himself as something of a loner, not because he is not sociable, but because he is a very private person. However, Smalls said he has many sides.

He attributes his strengths off the field to his being able to get along with anyone. Another strength is his ability to take a

interest that may have been sparked by his mother, who works in corrections as a case worker.

Lonzel LeGrant

The next name to watch belongs to the lone sophomore, LeGrant, walk-on split end from Mount Vernon, Ga.

He is the oldest of three children, with two younger sisters. He has not declared a major, but is leaning toward studying pre-

NCAA Violations

Substantiated and NOT Substantiated violations —

The possible violations below resulted from activities which occurred between Aug. 24 1993 - Sept. 6 1993. They were elucidated in an institutional investigation of a related incident.

(1) **Impermissible recruiting contact by Restricted Earnings Coach.**

Possible violation investigated but NOT substantiated.

(1) **Knowing involvement in providing a prospect an extra-benefit, specifically: providing or arranging free or reduced cost services.**

The events which resulted in the violations reported below took place between June 21 - Aug. 22.

(1) **Arranging for fraudulent academic credit for a prospective student-athlete.**

(2) **Knowing involvement in offering or providing a prospective student-athlete an extra benefit.**

(3) **Knowing involvement in offering or providing a prospective student-athlete an extra benefit.**

The violations reported below resulted in activities which occurred during the summer of 1994. They were elucidated in an institutional investigation started when student-athlete Jeff Cliett expressed concern about the arrangements for prospective student-athletes residing in Statesboro.

(1) **Knowing involvement in offering or providing a prospective student-athlete an extra benefit.**

(2) **Providing or arranging to provide a prospective student-athlete cash.**

(3) **Arranging to provide a prospective student-athlete free or reduced cost housing.**

(4) **Arranging to provide a prospective student-athlete free or reduced cost housing.**

(5) **Improper transportation to campus for a prospective student-athlete.**

(6) **Improper off-campus contact with a prospective student-athlete. Since the prospects had previously signed a National Letter of Intent, no recruiting advantage was realized.**

(7) **Ineligibility resulting from recruiting violations.**

Other POSSIBLE violations investigated, but

NOT substantiated.

(1) **Knowing involvement in offering or providing a prospective student-athlete an extra benefit.**

(2) **Arranging to provide a prospective student-athlete free or reduced cost rentals or services.**

(3) **Recruiting contacts, representatives of athletics interest.**

(4) **Arranged, held and participated in tryouts with prospective student-athletes.**

(5) **Arranged, held and participated in out of season practice activities with current student-athletes.**

(6) **Arranging to provide a prospective student-athlete free or reduced cost rentals or services.**

The events which resulted in the violations reported below took place between Sept. 13 - Sept. 26 at GSU. These were released in the report.

(1) **Arranging for fraudulent academic credit for a prospective student-athlete.**

(2) **Knowing involvement in offering or providing a prospective student-athlete an extra benefit.**

(3) **Knowing involvement in offering or providing a prospective student-athlete an extra benefit.**

(4) **Obligation of member institution to withhold student-athlete from competition.**

The following violations came as a result of giving testimony to the incidents in this case between Nov. 22- Dec. 7.

(1) **Furnishing false or misleading information**

(2) **Furnishing false and misleading information**

(3) **Furnishing false and misleading information**

(4) **Standards of honesty and sportsmanship**

(5) **Standards of honesty and sportsmanship**

Other POSSIBLE violations, but NOT substantiated.

The committee could not determine if these violations actually occurred.

(1) **Arranging for fraudulent academic credit for a prospective student-athlete.**

(2) **Knowing involvement in offering or providing a prospective student-athlete and extra benefit.**

Editor's Note: The above listing of possible National Collegiate Athletic Association violations against Georgia Southern University were presented to the media and later the public Friday morning as part of a 50-page report released through an internal committee investigation of the institution's basketball program.

The packet will now be handed over to the NCAA for that organization's decision of to what extent to sanction the program. GSU has already self-imposed 10 sanctions.

1995 CRI Softball: Co-rec All-campus Tournament

F.C.A. Babes & Buns 5/23 8:00 p.m. Bar Flys	Lions		
F.A.N. 5/23 8:00 p.m. Players Club I	Kiwanis		
WMCD FM100 5/23 8:00 p.m. Chico's Bail Bonds	Rotary		
Dirty Dozen 5/25 7:00 p.m.	Lions		
Wombats 5/23 6:00 p.m. B-Hitters	Lions		
Cliff Madness 5/23 6:00 p.m. Dalmations	Kiwanis	5/25 7:00 p.m. Student Affairs	Kiwanis
Beaver House 5/23 6:00 p.m. Outkast II	Rotary	5/25 7:00 p.m. Pot Luck	Rotary
		5/23 9:00 p.m. Sister Coretti Gimpe	Kiwanis
		5/23 9:00 p.m. Alpha Delta Pi Misty's Kids	Rotary
		5/23 10:00 p.m. Ladies & Tramps F.C.A. Thunder	Lions
		5/23 10:00 p.m. Dineque Mages C.C. Riders	Kiwanis
Extraordinaires 5/23 7:00 p.m. B.T.T.W.	Lions	5/25 8:00 p.m. Dixon Chix	Lions
Gamma Beta Phi 5/23 7:00 p.m. Phi Mu	Kiwanis	5/25 8:00 p.m. Bud & Bud Lites	Kiwanis
Players Club II 5/23 7:00 p.m. Kappa Delta	Rotary	5/25 8:00 p.m. Why are we here?	Rotary
		5/23 10:00 p.m. BSU I Young & Restless	Rotary
		5/25 9:00 p.m. Woody's Peckers Easy River Cobain	Lions
		5/25 9:00 p.m. Nulli Secunde	Kiwanis
		142	

CHAMPIONS

1995 CRI Softball: Men's B-League Tournament

121 5/22 4:00 p.m. Baylor O'Brien's	L	5/24 4:30 p.m. Lions	5/25 9:00 p.m. Rotary
122 5/22 4:00 p.m. ASCE	K	5/24 4:30 p.m. Kiwanis	
123 5/22 4:00 p.m. Suffolk Team	R		
124 5/22 4:00 p.m. Above the Plate Brave Crew	L	5/24 4:00 p.m. Rotary	
125 5/22 5:00 p.m. Lads			5/25 10:00 p.m. Lions
126 5/22 5:00 p.m. Players Club 90 April 34	K	5/24 5:00 p.m. Lions	
127 5/22 5:00 p.m. Framers Towers Club Shed	R		
128 5/22 5:00 p.m. Diamond Aces Deveraux Crew	L	5/24 5:00 p.m. Kiwanis	
129 5/22 5:00 p.m. Spartan River Bismarck Players	K		5/25 10:00 p.m. Kiwanis
130 5/22 7:00 p.m. Good Ol' Boys Lions	L	5/24 5:00 p.m. Rotary	
131 5/22 7:00 p.m. Screen Design Infid Fly Fly	K		
132 5/22 8:00 p.m. The House Midway Mustangs	L	5/24 6:00 p.m. Lions	5/25 10:00 p.m. Rotary
133 5/22 8:00 p.m. GSU Physical Plant	K	5/24 5:00 p.m. Kiwanis	
134 5/22 8:00 p.m. Sage's R. Lewes Printing	R	5/24 6:00 p.m. Rotary	
135 5/22 8:00 p.m. Gold Stream Kahua Monsters	L	5/24 7:00 p.m. Lions	
136 5/22 9:00 p.m. Hard Balls Club Impact	R	5/24 7:00 p.m. Kiwanis	
137 5/22 10:00 p.m. FCA Corn Flakes Winters	L		
138 5/22 10:00 p.m. Psycho Lookie Monsters Baltora	K	5/24 7:00 p.m. Rotary	
139 5/22 10:00 p.m. Sister Goret Tale's Middle	R		
140 5/22 10:00 p.m. Players Club Lionsmen	L	5/24 8:00 p.m. Rotary	
141 5/22 10:00 p.m. Sixty Niners Mighty Marshall	K		
142 5/22 10:00 p.m. Romans Oak Creekers	R	5/24 9:00 p.m. Rotary	
143 5/22 10:00 p.m. Cynardians Sigma Mu	L		
144 5/22 10:00 p.m. Minutemen Sons of Bitches	K	5/24 10:00 p.m. Kiwanis	
145 5/22 10:00 p.m. Rip It Lions Sports	R		
146 5/22 11:00 p.m. Lew's	K	5/24 10:00 p.m. Rotary	
		Nice	

CHAMPIONS

IN OLYMPICS

Games conflict with NASCAR races

By Paul Newberry
The Associated Press

BIRMINGHAM, Ala. — Talladega Superspeedway finds itself caught in an Olympic squeeze for the 1996 DieHard 500.

Not only are the bulk of the Summer Games being held at Atlanta, only about 100 miles to the east, but soccer games are set for Birmingham, just 50 miles to the west on the same weekend as the NASCAR Winston Cup race.

So, despite some discussions about shifting the race to a weekend when it wouldn't conflict with the Olympics, it appears that two major sports events will be held on the same day in the summer of '96—setting off a scramble for hotel rooms that figures to rival any of those last-lap duels at Talladega.

"We've known since 1990, when they first announced that Atlanta had the Olympics, that basically we were going to give up the state of Georgia for hotel rooms," said Jim Freeman, spokesman for the 2.66-mile trioval which bills itself "The World's Fastest Speedway."

"What we didn't realize was Birmingham would be successful in attracting a satellite event. That's compounded the problem."

Eight Olympic soccer games are scheduled at 83,000-seat Legion Field from June 20-28. The first six don't present a problem, but the last two—men's quarterfinal games on Saturday, July 27, and Sunday, June 28—

raised plenty of eyebrows.

Although NASCAR hasn't released its official schedule for next year, it's generally conceded that the quarterfinal games coincide with a Busch Grand National event on Saturday and the DieHard 500 on Sunday.

While the summer races at Talladega don't draw as well as those in the spring, about 100,000 usually turn out for the DieHard and at least half that number can be expected for a Grand Na-

tional event featuring many of the top stock car drivers.

"During that time, it really will be tight in Birmingham," said Dilcy Hilley, spokesman for the Birmingham Convention and Visitors Bureau. "We do expect to sell out the city easily."

Birmingham has about 10,000 hotel rooms. The city's Olympic committee projects it will need at least 3,500 to house officials, reporters, corporate sponsors and big-money ticket buyers.

Sorority Fall Rush Sign Up

May 23, 24 & 25
10:00 a.m. - 2:00 p.m.

Union Rotunda

\$35 Registration Fee
(must be paid at sign up time)

For more information contact:
Greek Affairs 681-5185

WE'LL GIVE
YOU A \$200
GRADUATION
GIFT, AND
WE DON'T
EVEN KNOW
YOU.

Sure, it's generous. But you don't have to be a relative or close friend to get a fantastic graduation gift from Post. Just bring in this ad to any of our great Atlanta locations, and Post will give you \$200 off your first month's rent. You'll also receive endless amenities and service that's in a class all its own. Plus, a money-back guarantee to assure your satisfaction. So stop by a Post property soon. And cash in on one of the best graduation gifts you'll ever get. Offer expires 7/15/95. This gift cannot be combined with any other offer or rent special.

Cobb County 1. New Post Parkwood® 933-1858 2. Post Village® Leasing Center 436-1223 3. Post Valley® 432-3110 4. Post Lane® 565-3234 5. Post Bridge® 951-9548	6. Post Mill® 951-8957 7. Post Vinings® 432-3818 8. Post Lake® 432-1300 9. Post Woods® 952-0848 Fulton County 10. Post Chastain® 851-0033 11. Post River® 842-0580	12. Post Dunwoody® 671-1590 13. Post Glen® 396-1160 14. Post Trail® 396-4661 15. Post Canyon® 587-3796 16. Post Renaissance® 875-4429 17. Post Peachtree Hills® 365-9511	DeKalb County 18. New Post Lenox Park® 233-4959 19. New Post, Crossing® 390-9699 20. Post Park® 458-4424 21. Post Brook® 320-1725 22. Post Walk® 633-0373	23. Post Pointe® 294-1515 24. Post Brookhaven® 231-1223 25. Post Ashford® 452-7040 26. Post Place® 321-3355 27. Post Summit® 508-1117 28. Post Oak® 634-4599	29. Post Oglethorpe® 816-5644 Gwinnett County 30. Post Chase® 934-1404 31. Post Corners® 448-4266 32. Post Trace® 446-0500 33. Post Court® 381-7466
---------------------------------------------------------------------------------------------------------------------------------------------------------------------------------------------------------	---------------------------------------------------------------------------------------------------------------------------------------------------------------------------------------------------------------	-----------------------------------------------------------------------------------------------------------------------------------------------------------------------------------------------------------------	------------------------------------------------------------------------------------------------------------------------------------------------------------------------------------------------------	--------------------------------------------------------------------------------------------------------------------------------------------------------------------------------------------------	---------------------------------------------------------------------------------------------------------------------------------------------------------------------------------------------

POST APARTMENT HOMES®
SETTING THE STANDARD™

IN EXHIBITS

Gallery shows off talents

By Renee Hurston
Staff Writer

Gallery 303 gives GSU students a sense of culture for the artistic life.

The gallery displays ceramics, drawings, paintings, photography, printmaking, sculpture and sometimes poetry. Throughout the year, the gallery sponsors several different art exhibits.

"Each month we'll have a different art exhibition," said Richard Tichich, director of Gallery 303.

The gallery features work from faculty members, well-known artists and GSU students.

A faculty exhibition in the fall gives professors a chance to show off their talent. Many of them are artists themselves and display their work in Gallery 303 and other galleries as well. Tichich said that even though the faculty members are teachers, they're still professionals. Many faculty members travel across the country to showcase their work.

Well-known artists are also given a chance to display their art in Gallery 303.

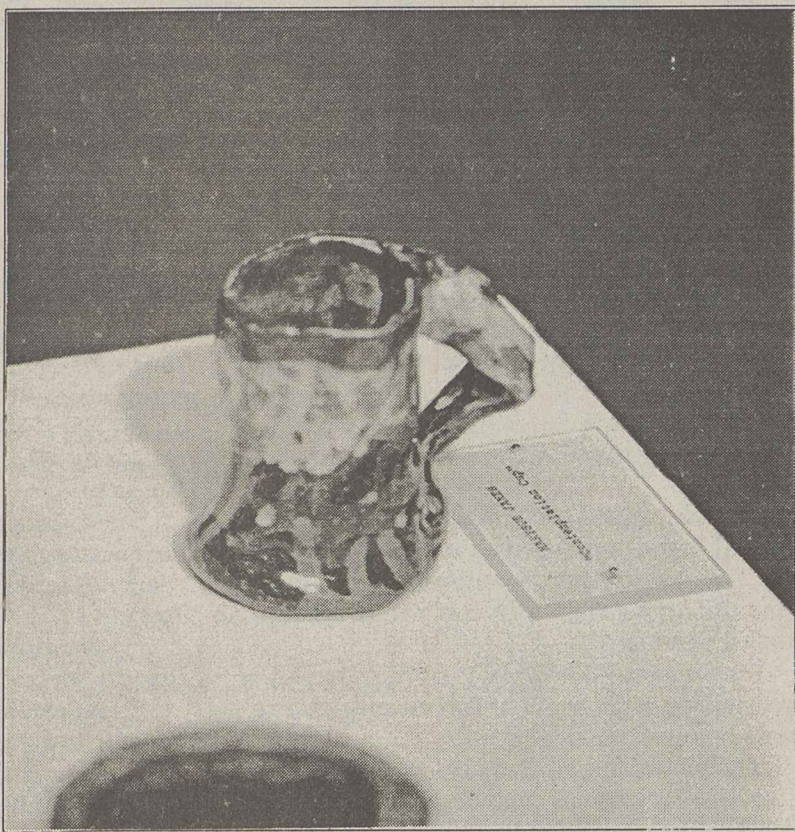
Works by popular artists such as Karen Spears and Joseph Molinaris was recently featured in the gallery.

The gallery also sponsors an annual student exhibition where art is judged by an expert in the art field.

This year's judge was Neil Kalmanson, an art teacher at East Georgia College.

The exhibition gives students an opportunity to display their creative art. The students can place in first, second or third place and can win money and scholarships.

Gallery 303 has helped one former GSU student reach his



John Munford

Professional artists, faculty and students, such as MarySue James who created this ceramic piece, display their work in Gallery 303.

goal. Former student Eric Strauss, who now resides in Atlanta, is a sculptor. By getting hands-on experience from Gallery 303, he now sells his work to different art galleries across the country. Strauss returned to GSU last year to give a lecture to some of his former classmates.

Many people are unaware of the hard work that is involved with the gallery.

"Putting on an art show is not magic," Tichich said. "A lot of time, hard work, and dedication are needed to present an art show."

Tichich has a committee that helps organize the different art shows. The committee plans all art exhibitions a year in advance and sends proposals all over the country to different artists.

The committee prefers an artist that creates unusual work.

"We prefer to use artists who are taking a chance," Tichich said.

The group reviews the art work, talks with the artists and gives tours of the gallery.

Shelley Bedchum, a senior committee member, has worked with the gallery since her freshman year.

"The committee works diligently to prepare for an art show, and we all share the responsibility," she said.

Gallery 303 doesn't buy or sell art. After an art show the work is returned to the artist.

"The work still belongs to the artist," Tichich said. "The gallery does not have a collection of art like a museum."

ON CAMPUS

Panel discusses gays and Bible

By Ashley Hunt
Features Editor

"Is homosexuality justified by the Bible?" and "Does God know who I am?" were just some of the questions discussed at the Gays, God and the Holy Book panel discussion Thursday.

Ken Hull, associate pastor of the Metropolitan Community Church in Jacksonville, Fla., Frankye White, pastor of the same church, Tom Meyers from the organization P-FLAG, and professor of history and religious studies minor George Shriver were the panel members.

The discussion started off with each panel member giving a 15-minute speech about themselves.

Hull opened his speech with a scripture from Hebrews 4:12, "The word of God is living and active sharper than any two edged sword piercing until it divides souls from spirit . . . it is able to judge the thoughts and intentions of the thoughts."

Hull went on to explain this verse as the word being an active part of life and a scary part of life, especially his.

He also posed the question, "How much does God know?" and related this to the time in his life when he first discovered he had homosexual feelings towards a friend.

"There have been times in my life when I didn't want God to know a lot about me and I oftentimes didn't want to face those things myself," he said.

Hull studied music at Wichita State University where he took two Bible classes and studied them not as the Word of God but as another "human document." He began to wonder if they had any impact on his life.

There was a reason for this. His best friend at the time was an atheist, and Hull began to have physical feelings for him.

He went through a period of confusion where he denied God.

"It was easier for me to deny God than to face myself because if I denied God, no one would know," he said.

But after failing in a student teaching music class, he began to pray and realized God was calling him to be a minister.

Hull later met his lover Jerry and the two moved to Sarasota where they attended the Metropolitan Community Church and

She went through the necessary instruction and today she is the pastor of the church in Florida.

Shriver's 10-minute speech explained the viewpoint that Jesus was a liberal. He supported his theory by reading from a book entitled "Jesus Means Freedom."

Meyers is the regional director of P-FLAG, an organization for gays and lesbians and their families.

He is the father of a homosexual and spoke about his coming to terms with this and getting involved in the organization.

Crowd response

After each panel member spoke, the floor was opened for questions where a GSU student brought up the question of how the panel members justified homosexuality. This caused quite a stir from the crowd, where one student made a 10-minute speech about coming to terms with his own homosexuality and that religion is a personal thing, and that God loves and accepts everybody.

Meyers made a statement about how some scriptures were irrelevant and the Bible didn't apply to 1995.

This also brought quite a stir from the audience.

Another issue that was brought up was praying in school and forcing others to do the same. Was the right of one student to pray more important than the other students' right?

Many students disagreed with this, and one student who is currently teaching said he would never pray with his students.

The audience debated for almost an hour.

Fred Richter, a sponsor of the panel, ended it and thanked everyone for coming.

**"THERE HAVE BEEN
TIMES IN MY LIFE WHEN
I DIDN'T WANT GOD
TO KNOW A LOT
ABOUT ME AND I
OFTENTIMES DIDN'T
WANT TO FACE THOSE
THINGS MYSELF."**

— **KEN HULL**
ASSOCIATE PASTOR

found their home.

White is the pastor of the Metropolitan Community Church in Jacksonville. She grew up as a Roman Catholic but converted to Lutheran after realizing she didn't want to have any more children after a son and a daughter. But halfway through her marriage, she realized she had sexual feelings toward women.

After a bitter custody suit, she could only see her children on weekends.

But she helped raise the 18-month-old son of her lover. After hearing a woman priest speak at a local gay and lesbian church, she realized she wanted to be a priest.

IN STUDENTS

Office helps promote diversity among students

By Erika Anderson
Staff Writer

The office of multicultural affairs has been providing students with education and service for over two years, but many students do not realize that the office is there to serve all students.

Stephanie Ray, head of Multicultural Affairs, said that many students get confused when they hear the word "multicultural."

"The multicultural office focuses on every aspect of diversity, whether it be religion, sexual orientation, race, or gender," Ray said. "When we say multicultural, it is important to stress culture, not just race or ethnicity."

The multicultural affairs office plans the various activities for the diversity weeks that take place in the fall.

The office works with the students in planning "Religious Diversity Week," "Women's Awareness Month" and "Black Awareness Month."

"We work very closely with student organizations whose mission is of some aspect of diversity," she said.

One of the most important tasks of the Multicultural office is the Minority Advisement Program.

This program pairs a freshman minority student with an upperclass minority student, who has been selected through a vigorous interview process. This provides the freshman with peer counseling as well as tutoring. There are over 600 freshmen who participate in MAP and 30 upperclassman counselors.

Ray and her assistant, Art King, a GSU graduate from Barbados, also go to over 100 classrooms each year to educate the students on the subject of diversity.

This year, Ray and King will travel to Santa Fe, N.M. for the National Conference for Race and Ethnicity.

Ray said that GSU is very

progressive as compared to many other schools.

"Some multicultural coordinators think that we should just focus on race and ethnicity," Ray said. "Many can't believe we have a Religious Tolerance Week."

Ray also said that GSU is a trendsetter and that the trend is moving towards more than just race and ethnicity.

The multicultural affairs office serves as a consultant to professors and resident directors when they have problems dealing with diversity.

"Sometimes the RDs will have problems about diversity and will call us and ask 'What do you think about that?'" she said.

Ray said that GSU, as a whole, is very open-minded and willing to accept individuals for what they are.

"I'm very proud of our campus," she said.

Multicultural Affairs has come a long way since January of 1994 when it first opened. Ray, however would like to see it grow even more in the future.

"The goal of multicultural affairs is to move beyond intolerance to acceptance," she said.

IN CLUBS

Club places second in conference on economy

By Derek Lewis
Senior Staff Writer

For most students, discussing economic issues ranks up there with having a root canal, going through drop-add or trying to find a parking place before classes.

For some, however, it is something they are willing to devote extracurricular time.

The Economics Club sponsored a group who recently attended the Students in Free Enterprise competition in Atlanta. This competition was organized by the Students in Free Enterprise Organization, a non-profit organization in Kansas.

The winners of the regional competition in Atlanta then moved on to compete at the national level in Kansas City. The conference was geared toward motivating students into discussing economic issues that have occurred. They also discussed the free enterprise system by many joint presentations.

The group from GSU was a part of the Economics Club. Dis-

cussion of economic issues was nothing new to this group.

"In the past few years, we have led debates and panel discussions on the Balanced Budget Amendment, North American Free Trade Agreement and Health Care," said Economics Club Sponsor Jamie Partridge.

"STUDENTS IN FREE ENTERPRISE IS A NON-PROFIT ORGANIZATION. IT SPONSORS COMPETITIONS ALL OVER THE UNITED STATES."

— **JAMIE PARTRIDGE**
ECONOMICS CLUB SPONSOR

The purpose of this conference was to provide the students with an opportunity to show off the skills they have acquired and to learn from others.

"Students in Free Enterprise is a non-profit organization. It sponsors competitions all over the United States," Partridge said. "They pay for the hotel rooms and provide luncheons

with guest speakers."

The competition, which took place in Atlanta, included schools from all over the southern U.S.

"There were schools from all over the Southeast. We were divided into different groups," she said.

There were more than 40 schools in competition. The

was the first time we placed," Partridge said.

The four students competing were Teri Sclama, Brian Brennan, Jenny Cargill-ex and Oscar Lund. The latter two are from Sweden.

"We were glad to have (the Swedish students) competing with us," Partridge said. "They provided an interesting perspective to the issues."

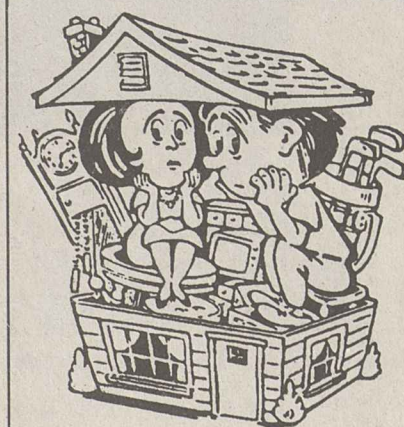
The competition consisted of a joint presentation of the competing members before a group of judges.

"Basically, it is a 25 minute presentation. The four students split the time among each other," she said. "The judges are managers in different companies in the areas the students are discussing."

Partridge was quick to explain that this was not just a group of economic majors.

"We don't have a lot of economic majors at GSU," Partridge said. "Only one of the members was an economics major, the others were marketing and finance majors."

Main Street Self Storage Mini Warehouses



- Self Storage
- Available 24hrs
- Over 270 Units
- Well Lighted
- Economical Rates
- Various Sizes

Main Office
443 S. Main St. • Statesboro
764-5589
Three Convenient Locations:
6 Ed Moore Ct
Brannen St
and South Main St.

Sonic
FIFTIES
Celebration!
May Combo Values
That Can't Be Beat!
Offers Not Good With Any Other Coupons or Offers

(A) • Deluxe Sonic Burger • Regular French Fries • Regular Soft Drink	\$1.99 <small>plus tax</small>
(B) • Ex-Long Chili Cheese Conco • Regular French Fries • Regular Soft Drink	\$2.19 <small>plus tax</small>
(C) • Country Fried Steak Sandwich • Large French Fries • Large Soft Drink	\$2.59 <small>plus tax</small>
(D) • Breaded Chick-Fillet Sandwich • Large French Fries • Large Soft Drink	\$3.19 <small>plus tax</small>
(E) • Deluxe Velt Double Cheeseburger • Large French Fries • Large Soft Drink	\$3.39 <small>plus tax</small>

SONIC
"Everything you're hungry for"
DRIVE-IN • 322 South Main • DRIVE-THRU

Celebrate the New Year
in our Towne!

TC
Towne Club

Fall '95

Towne Club Apartments
1818 Chandler Road
681-6765

Today's Quote

"If you want to know what's going on in America, you have to watch soap operas."

-- Cyril L. R. James

01-Announcements

An Amnesty International Club is forming on campus. Amnesty works to stop torture and other human rights abuses worldwide. The first meeting will be Wed., May 17 at 4pm in Union Rm. 242. We will begin planning activities for the fall. For more info., call Bill MacIntosh at 681-0748 or Debra Sabia at 681-5725.

ANNOUNCEMENT!!!!
The George-Anne's last issue is May 30th so get those classifieds in today!!!

Anyone interested in Triangle, GSU's les/bi/gay student organization, come by our office on the 2nd floor Williams Center or call 871-1723.

ATTENTION: The George-Anne screens all classified ads prior to publication. The newspaper strives to accept ads for legitimate products & services only. Students are urged to exercise caution when replying to ads, particularly those which ask for money or a credit card number in advance of delivery of products or services. Students are also urged to report to the newspaper (at 681-5418) any suspicious offers they might see in the classifieds. Remember, if an offer seems too good to be true, it probably is.

Gamma Bet Phi general meeting Thursday, May 11 7pm. Union Theater. Please attend.

Outdoor Adventure Club meeting Monday 22nd at 6:30 in Union Rm. 275. All members requested to attend. Anyone Welcome! Plans for trip to Helen, GA beginning.

Sigma Gamma Rho presents: Sigma Week '95. May 15-21. Come out and enjoy the activities.

The Georgian Southern Afro American Gospel Choir Spring Quarter Concert will be held in the Russell Union Ballroom on May 21st 1995 at 6pm.

Triangle is putting together a les/bi/gay alumni association, if you are interested please write LB 12491 or call 871-1723.

Want to put Senator Dole in the oval office? You can help with the campaign! Call Audrey at 871-3406. Please leave message.

03-Autos for Sale

'91 VW Fox black 4-door, 5-speed, 68k. New brakes and AM/cass. \$4900. Telephone: 681-2414.

1986 Dodge Chrysler Laser recently had alot of work done in good shape-low mileage. \$2,400. Call Glenn at 681-9003 leave message and will return.

1988 VW Fox \$950. Navy blue, 4dr, A/C, stereo. 188k, replaced transmission, very reliable transportation. Call 681-9577 for more info.

1992 Red Chevy S-10 Pick-up. Tinted windows, rally rims, 58,000 miles. Good, dependable vehicle. \$8500. Call Donnie at 852-5028 and leave a message.

83 Ford LTD, new transmission, new starter, 3.8 engine, AC, cruise, runs good only \$970. Call 681-1782.

For sale: 1991 Jeep Wrangler. Great condition! Must sell now!!! Call Michelle at 681-8425.

Must sell! 1983 Pontiac Gran Prix, runs good, needs a little work. \$800/OBO. Call Kevin at 681-9163.

04-Auto Parts, Repair

Bedliner: fits full size C/K 1500 Chevrolet or GMC regular size. \$75 or best offer. Call 871-7434.

06-Child Care

NANNY -- SPEND THE SUMMER ON HILTON HEAD. Active and caring lady to take care of my two daughters, ages 7 & 10. Live-in or live-out with salary. Lots of flexibility. Call (803) 681-4567.

09-Furniture & Appliances

For Sale: 2 wood bureaus for more information please call Carla at 681-7956 and leave a message.

For sale: loftbed with mattress. Great for small apartments. Call Lisa 681-7827. Leave message. Must sell.

For sale: Queen size Victorian style bed, white with porcelain finials. Almost new, call 739-4064 after 6 pm.

For sale: Whirlpool microwave. Large capacity. Call Jeff 764-3836. \$50.

Full size waterbed w/headboard-best offer. Sectional couch, \$50. Sofabed, \$30. Dresser and nighttable, \$50. Men's 10 spd mountain bike, \$50 or best offer. Call Diane-681-1773.

Refrigerator 2.5 cubic foot Kenmore. Works like new. \$50 OBO. Call 871-7434.

Wooden loft for sale. Fire treated for dorm specs. Sturdy construction. \$40, negotiable. Call Dean or Dave 871-4648.

11-Help Wanted

500 summer camp positions in NY, PA, New England. Instructors & coaches needed: tennis, water sports, gymnastics, ceramics, outdoor adventure, all sports, all creative & fine arts. Call Arlene 1-800-443-6428.

ALASKA SUMMER EMPLOYMENT. Students needed! Fishing Industry. Earn up to \$3,000-\$6,000+ per month. Room and board! Transportation! Male or female. No experience necessary. Call (206)545-4155 ext. A53944

ATLANTA COMMITTEE FOR THE OLYMPIC GAMES INTERN NEEDED: Savannah office for the Olympic Games Yachting Competition is seeking a mature, motivated, detail-oriented intern to work with the Venue Management Staff. Start June 1 (or earlier), End August 20. Work 24-30 hours per week. Non-paid, but will work to arrange academic credit with your department. Call Todd Allen, Associate Venue Manager, (912) 231-1996.

Attractive dancers wanted for Baby Dolls Adult Entertainment Nightclub in downtown Augusta GA. Exp. Preferred, but will train. Friendly and congenial atmosphere. Transportation and housing provided. Excellent incentive program offered. Must be a minimum of 18 years old. Call pager 706-731-1148 or 706-722-0540 after 5pm.

Babysitter needed weekdays summer and fall quarter. Walking distance to campus. Send letter of interest and references to S.A.M. LB 8105.

CRUISE SHIPS HIRING. Travel the world while earning an excellent income in the Cruise Ship and Land-Tour Industry. Seasonal and full-time employment available. No exp necessary. For info. Call 1-206-634-0468 ext. C53946.

Desperately need 1 female to sublease. Whole summer \$440, 2 br, 1 ba. Across from campus beside the pool. Call Heather or Anna at 681-8495.

HELP WANTED!!!! ATTENTION! GSU STUDENTS FULL TIME INCOME, PART TIME WORK CALL! 489-5998.

HELP WANTED: Cashiers afternoons, evenings, weekends apply in person, Grady's Citgo, Exit 24 I-16.

JOBS AVAILABLE IN PRIVATELY OWNED CHILDREN'S SLEEPAWAY CAMPS IN NY, PA, MAINE. SKILLS NEEDED TO TEACH: TENNIS, SWIMMING(WSD), GYMNASTICS, ROLLERBLADING, WATER-SKIING, SAILING, ARCHERY, ENGLISH RIDING. GROUP LEADERS, ALL SPORTS. 1-800-443-6428!!!!

LIFEGUARDS, POOL MANAGERS, SWIM COACHES, SWIM INSTRUCTORS, SUMMER POSITIONS AVAILABLE IN NORTH METRO SUBURBAN ATLANTA AREA. CERTIFICATIONS CLASSES AVAILABLE. SWIMATLANTA POOL MANAGEMENT FOR MORE INFO CALL (404) 992-7665.

LIFEGUARDS: Trinity Pools is now hiring lifeguards, managers, swim coaches, swim instructors, communication directors, and service technicians for the Metro Atlanta, Nashville, and Birmingham areas. Full and part time summer positions are available. For info call (404) 242-3800.

Need advertising or marketing major for Part time Position selling and producing advertisement ads. Call 871-3827 for Interview.

Part-time position. News reporter/writer. Must have flexible schedule, good grammar, language, typing and note-taking skills. Contance Mandy Byram, Editor, The Claxton Enterprise, (912)739-2132.

Residence Life is looking for summer conference assistants to work with orientation. Please pick up application in room 10 Rowenwald. Deadline is 5 P.M., May 22, 1995.

RESORT JOBS- Work at one of the many Resorts in the United States. Locations include Hawaii, Florida, Rockies, New England, etc. Earn to \$12/hr. +tips. For more information, call (206)632-0150 ext.R53941.

Student-mom needs sitter for Summer Quarter. 2-3 days a week. AM hours. Call 858-2891 or note to J. Stokes, LB 10473.

Want to stay here this summer? We need student(female preferred) to watch 10 & 11 year old girls from June 1 thru August 25 from 8:00-3:00 M-F. Must have transportation. Call 587-2919, leave message.

12-Lost & Found

Black and white cat with crop tail found behind Arby's. Needs a good home. Call 871-7201, W 681-3044.

13-Miscellaneous for Sale

'95 Trek 850 Women's saddle, on board commuter, tool bag, U-lock and bike rack. \$500. Can be seen at Bike Link. Call Amille 489-8316.

15" Hammer rims for sale. New 500, asking \$300. OBO. Call 681-8529. Ask for Matt.

17" Diamond Back Ascent Mountain Bike. Good condition. Asking \$300. Call Jeff 681-7907.

Apple Power PC 6100/60AV 8/250CD w/ 14" color plus monitor and Geoport Modem. Call Chuck 681-6658 \$2500.

Bike for sale: 18 speed Men's bike, Shimano gears, new rear rim, good tires, 1 year old, great campus bike. \$70 OBO. Call Carey at 681-1479.

Computer for sale: Laser 128 Apple compatible w/monitor. Includes Word Perfect Software. Blank disk included. Call Scott 871-7655. \$100 or less!

For sale: TI-82 calculator. Used one quarter, \$75. Call Jeff at 681-0789, leave message if not there.

Kawaski J5550 Jet-ski (stand up model). Runs great \$1100. 489-2557.

Living in Johnson next year? Carpet for sale: Beige plush, hard to stain, fits room. Call Shawna at 681-1498. \$45 OBO. If no answer, 681-4755.

New 1995 Cannondale M-300 Mt. Bike. \$325 OBO. Call Jason at 871-7977.

Sweet Paintball Gun for sale. Razorback 2 Pump Gun. Quick change CO2. Velocity adjustable. Asking \$140. Call Dean 871-4648.

14-Motorcycles

1975BMW R90/6, 900cc, many new parts, excellent condition, factory owned, appreciates in value every year, \$2800, 871-7224.

Yamaha 250cc Street Bike under 5000 miles. Perfect condition. Blue w/chrome trim. \$725. 489-2557.

17-Pets & Supplies

Ball Python for sale with 45 gal tank and many accessories. Asking \$125 OBO. Also medium iguana and tank for \$40. Call 681-8529.

Male sable ferret. Very friendly. Neutered and descented. With \$395 worth of cage and accessories. Must sell. Moving, \$150 OBO. Call ask for Rusty 871-4017.

NOW OPEN!!!!
The Aquatic Jungle Inc. Saltwater fish/reef, freshwater fish. M-F 12-7pm, SAT 9-5pm 489-6100

19-Rentals & Real Estate

2 bedroom townhouse for summer lease. \$100x2 first months rent. \$192.50 there after. Call Robert or Noel 764-9816. (On South Mulberry Street).

2 bedrooms available summer quarter Campus Courtyard. 4 bedroom apartment. Fully furnished. \$225/mon. Call Angie or Meg 871-3881.

Apartment for sublease starting June. One bedroom, 1 bath, tennis courts, swimming pool across 301 from campus. 871-3562 or 871-4517. Leave message.

ASAP summer lease for a one bedroom apt. June through August. Rent \$200. Please contact Amy 681-4232.

Campus Courtyard Apt. #106, has a large bedroom available with a 1/2 bath and spacious closet. The apartment is furnished. Please call 681-7098 or (813) 799-4415 for information.

Extremely clean and quiet 1 bdrm furnished apartment-utilities included. Call Dana at 681-9008 for more info. Price @ \$425.

Female sublease needed immediately for summer quarter. Player's Club apts, \$250/mon + 1/3 utilities. Call Karen at 681-9163. Negotiable.

Female sublease summer quarter large privated bedroom, walk-in closet, private bathroom, ceiling fan, furniture if needed. Hawthorne Townhouse call Traci 587-9003 leave message before 6pm.

For sale: 14x70 Mobile Home. 1987 2br, 2ba excellent condition. Call 763-3518 after 6pm.

Furnished 2 bedroom apartment for rent. Great location. Call 489-6834 or 489-6285.

GA Villas #21 summer sublease. 2 bdrm, 1/2 utilities. June rent negotiable. 871-2667 or leave message.

Georgia Villas #17 is currently available for summer quarter. If you have questions, please call 823-3513

HOME FOR SALE: Ramblewood Subdivision: Well-maintained, affordable 3br/2ba house 1500+ square foot, central H/AC, new vinyl flooring, new carpet, carport, recently added large screen porch and 14x20 workshop/storage building, attractively landscaped. \$76,900. Call for appointment 489-8434(day) 489-1923(night).

HOUSE FOR SUBLEASE!!!! 3 bedroom house in a quiet area close to campus. Rooms are twice as big as apartments for the same price. Need to sublease for summer quarter starting in June. \$150/mon + util. Fully furnished and 3 bedrooms available. If interested, call Melissa at 764-3421 and leave message.

HOUSES & APTS AVAILABLE SEPT. 1. No pets. All utilities furnished at 602 S. College Apts. Need related students for 4 BR Houses. James M. Hood, 764-6076.

Large, 2-story 4-bedroom house downtown for 4+ people... lost of privacy and extra space within walking distance of GSU. Washer/dryer included. Low utilities. Available 9/1/95. Call of leave message 489-4422.

Les/bi/gay or supportive straight roommate needed to take over lease summer quarter. Bermuda Run, poolside, rent and share utilities. Call 871-7469.

Male or female needed to sublease for summer in Stadium Walk. Both of us are leaving, you'll have 2 bedrooms for \$235/mon, nice. Tellas at 681-9014,ASAP.

Mobile Home for sale. Lanier Drive. 3 bedroom, 2 baths, large front deck. Why rent when you can own. \$7,500. Ask for Mark 681-1892.

Need a male to sublease summer! Only \$150 for own huge bedroom share bath and 1/4 utilities. Please call 764-9235. Ask for Brian or Carolyn.

Need to sublease for summer quarter. Only \$161.25/mon. Two bedroom townhouse Player's Club. Call Chris, Jeff, or Karey. 871-4050.

Needed one person to stay in 2 BR apt. \$500 for the summer plus utilities. Fully furnished, beside pool, quiet neighborhood. Call 871-6668.

Needed someone to sublease for summer quarter. W/D, dishwasher. Your own bedroom and bathroom. Great Deal! Call Chad at 764-3836

NOW LEASING: one side of 3 b/r duplex apartment available now, other side available 9/1/95. Modern, fully equipped. Quiet location 400 yds from GSU front gate. \$555/mon ea. 489-3286.

People needed to sublease 2 bedroom apartment. Park Place apartment is \$237.50/mon for summer quarter. Call Hope at 871-3836 for more info.

Reasonable rentals- Houses, apartments, mobile homes. 764-5003.

Room sublease for summer. W/D, private bathroom at Towne Club. Looking right at pool. Give me an offer. Call 764-7754, after 6pm

Sublease a room in a five bedroom house during July and August. Cheap rent! Call Gretchen at 488-4022 or 681-8425.

Sublease apartment for summer. 4 bedroom, 3 bath, new carpet, new paint job, new wallpaper. Rent is negotiable! Call for more info. 871-7792.

Sublease: Need female for 2 bdrm, 2 bath W/D, \$158/mon + 1/3 util. Shared room. Possibly own room. Willing to compromise on June rent. Can be out ASAP. 681-8451

Sublease: nonsmoking WF needed summer quarter, Player's Club, own room, W/D, June paid, no deposit. \$200/mon. Neg. Call Tori 871-4963.

Sublease: summer at Towne Club. Master bedroom with own bathroom. \$150/mon. Call Scott 871-7655.

Summer Sublease! Eagle's Court Apartments. \$380/mon + utilities.(willing to negotiate price) 2 bedrooms, 2 bathrooms, W/D, very spacious, pool, and volleyball setup. Call 681-6789 by May 27 if interested.

SWF needed for 95-96 \$225/mon., own room/bathroom or will move in with you if you need furniture and have own room/bathroom. Christine 681-8186.

Take over lease in Sussex. Great roommates. Free water. W/D, own bedroom and bathroom. 1/3 utilities. \$200/mon. Call Kita at 871-3879 or 681-7227.

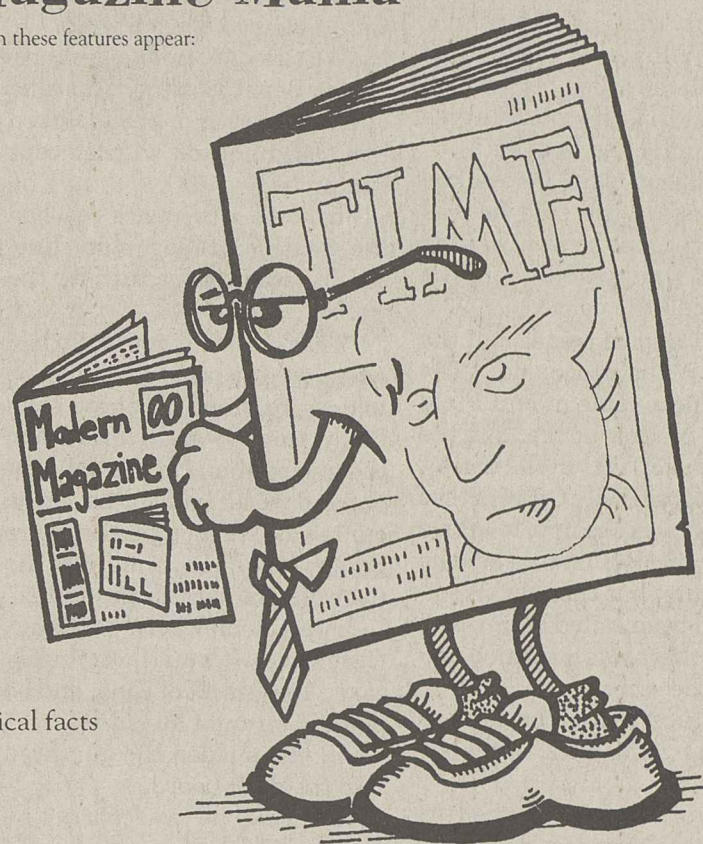
the CULTURAL IDIOCY QUIZ

by Rich Dahm and Dan Vebber

Magazine Mania

DIRECTIONS: Name the magazine in which these features appear:

1. "Picks & Pans"
2. "Humor In Uniform"
3. "Separated at Birth"
4. "Milestones"
5. "Party Jokes"
6. "Random Notes"
7. "The Talk of the Town"
8. "Faces In the Crowd"
9. "Spy vs. Spy"
10. "Hints from Heloise"
11. List of 500 companies with highest gross revenue
12. "Goofus and Gallant"
13. "Periscope"
14. "Cheers & Jeers"
15. Nude Demi Moore covers
16. "Pencilwise"
17. "Index" of interesting numerical facts
18. "Shot by Shot"
19. "Hot Sheet"
20. "A View From the Castle"



© 1994 Onion Features Syndicate

Two female non-smokers needed to sublet apartment for summer quarter at Players Club Apartments. Private bedrooms, fully furnished, bargain price. Please call 681-2297.

Two spacious rooms for rent in beautiful house. Close to campus. Sublease for summer. Rent is cheap! Contact Teresa 489-4022.

WF needed to sublease July and August. Private room and bath \$200/mon. Call 681-3634.

20-Roommates

1 female roommate needed for 95-96 school year in Player's Club. 4 bedroom flat \$233/mon + 1/4 utilities. Call 871-7988 or 489-6878.

2 male roommates needed for summer quarter \$170/mon + 1/3 utilities with own room \$130/mon + 1/3 utilities must share room. Call 871-5968.

2 nonsmokers needed. Private rooms furnished. W/D. About 5 miles away from campus. Rent neg. Share utilities. Leave message. Annette 488-2273.

Female needed to sublease summer in Bermuda Run. Own bedroom, own bath, own phone. Only \$150. Furnished or unfurnished. Call Kelly at 681-8798.

Female roommate needed for summer. Furnished apartment. Great location, larbe bedroom. Call Jen or Joy at 489-6834.

Female roommate needed. Private room \$180/mon. Call Elizabeth 681-6682, leave message.

Female roommate wanted for fall quarter. Non-smoker to share 4 bedroom apartment at Hawthorne. Own bedroom, share bath. \$225/men. Call Rachael or Rebecca at 681-7969.

For sale: Need Black Male or Female Roommate June 1st \$185/mon. + 1/2 utilities. Furnished apartment w/own room. Call Kysia anytime 489-2992.

Looking for two male roommates to share new unit at Campus Courtyard for '95-'96. Totally furnished, split utilities, \$225/mon, share bath w/ 1 person. Call Phillip 681-3504.

Male roommate needed Hawthorne 2 for Fall 95-Spring 96. \$225 plus W/D. Call Stacey at 681-7375 or Adam at 681-3983. We have 2 girls and 1 male. Need a male!

Male roommate needed to sublease summer quarter at Hawthorne 2. Rent is \$225/mon + utilities. June rent will be paid! Call 681-9187 today!

Need one male roommate for 95-96 for 3bdrm apartment. \$200/mon + util. Nonsmoker, serious student and easy going call Chad or Jeff 764-3836.

Need white female to sublease summer quarter at Park Place. Rent is reasonable. Call 681-8735 for more information.

Needed: 2 female roommates to lease Player's Club Townhouse. \$190/mon + 1/3 utilities. Call 871-7977.

One female roommate needed to sublease summer, possibly 1995-96 school year if interested. Park Place. Own bedroom and bathroom. Fully furnished. Call Katy or Christy at 871-5303.

One roommate needed at Stadium Walk #98. \$400 for the whole summer + 1/4. utilities. Call Kevin at 681-9014 ASAP. Leave message. 2bdrm, 1ba.

Roommate needed Bermuda Run. \$400 summer quarter. Private room, W/D, private bath and walk in closet. Call 681-8980 neg.

Roommate needed to share room in a two bedroom apartment. Call 871-6554 for details.

Summer roommate needed at Sussex #67. \$200/mon. No water. Bedroom open to anyone, call Peter at 871-3368.

Transferring to UGA? We need on or two female roommates to share apt. At Player's Club in Athens. Call Jennifer at 871-5136.

WF needed to sublease summer in Player's Club. Share bedroom \$100. Call Mandy at 871-5050, furnished or unfurnished.

CULTURAL IDIOCY QUIZ ANSWERS
1. People Weekly
2. Reader's Digest
3. Spy
4. Time
5. Playboy
6. Rolling Stone
7. New Yorker
8. Sports Illustrated
9. Mad
10. Good Housekeeping
11. Fortune
12. Highlights for Children
13. Newsweek
14. TV Guide
15. Vanity Fair
16. Games
17. Harper's
18. Premiere
19. Entertainment Weekly
20. Smithsonian

WF Roommate needed for '95-'96 school year. Own bedroom, shared bath. \$215/mon + 1/2 utilities. Call 871-4526.

21-Services

If you would like to have braids call Chastidy at 681-9264. I have 2 years experience and affordable prices. Call for an appointment today!!!

Sheet rock repair service. Most holes \$10.00. Call Bryan at 871-4611.

TYPING: Lesson plans, term papers, resume, vitae, etc. Call Brenda, 764-1486.

23-Stereo & Sound

CD Changer. 6-disc Sanyo Max6000. Add a CD player to your vehicle's existing stereo. \$270. Call 871-7434.

For sale: 1 Orion 225HCCA 500 watt car amplifier. Still in box and I have all receipts. Will take best offer. Call Brian at 681-3504.

Kenwood stereo/cassette receiver (KRC-580) comined with the Kenwood compact disc auto changer (KDR-C602) for sale. Less than two months old. Still has everything. SOLD ONLY AS A SET-\$450. Call Donnie 852-5028.

27-Wanted

Want to buy a used in-dash car CD player or a set of CD changer and receiver w/cassette. Call 871-3408.

The George-Anne.
It's not just for breakfast any more

BIKES

Continued from page 1

Hainley identified the "crunch areas" as being the Forest Building, the two new buildings on the south end of campus, the South Building/Political Science area and the Library. He said if funding allows, more spaces will be added to other buildings like the Biology Building.

The bike racks will have a different design to enable bikers

to lock the U-channel locks to without putting them on top of the racks. 46 racks will be phased in for a total of about 500 spaces.

The signs will be approximately four feet high and made of a flexible metal so if a collision occurs, the likelihood of injury is minimal. The signs will indicate riding areas with a picture of a person on a bike, parking areas

with a "P," and arrows will direct cyclists in the direction of a parking area.

"We're trying to encourage people to ride bicycles responsibly," Hainley said. "Bicycle spaces are much more cost effective compared to parking spaces for cars. The funding hasn't been resolved, but that decision might come to the students."

KIDNAP

Continued from page 1

"I was pumping the gas and a car drove up, and there was a guy who was getting a bag out of the trunk that had a cellular phone," Williamson said. "I told him to call the police, but I wasn't looking at him. He looked at me kind of funny and nodded."

Williamson said he walked into the store. He said he was nervous because he wanted to do the right thing and he told the clerk to call the police.

"I told him to please call the police," Williamson said. "The police officer came in and I told him not to look at me, but the man (suspect) was in the truck."

Statesboro Police Officer Steve Anderson was the first to arrive on the scene. Williamson said he wasn't sure, but thought the officer had been called because he thought there was an armed robbery of the store.

The officer exited the store as if he was going back to his vehicle.

Anderson then approached the truck, but Newell reacted by pointing his gun at the victims and Anderson.

"He walked outside toward his car, but circled around it to the truck," Williamson said. "I saw Billy (King, the driver) put his hands out the window."

At that point, Newell pointed his gun at the officer and the victims in the truck. He then told King to leave the station. As the truck pulled out, several police had arrived and began chasing the truck toward I-16.

"I thought I had made a mistake (by getting the clerk to call the police)," Williamson said. "I sat at the BP station for a long time. The police were taking statements and I listened to the chase on the radio."

Williamson said the detective took him to the police station. He was able to hear the chase on the scanner. As the truck traveled toward I-16, the Bulloch County Sheriff officers and the Statesboro Police attempted to pull the truck over.

"They tried a rolling road block, when they have a car in front, a car on the side and a car behind you and slow you down," Bennett said. "He told Billy to

get out of it, and he did."

Bennett said at first it was pretty scary, but once on I-16 things calmed down a little.

"We tried to make him relaxed," Bennett said. "It was kind of like a road trip, but it looked like O.J. Simpson with 16 cops behind us."

Just before the truck reached the South Carolina state line, the situation took a turn for the worse.

"That's when it got really bad when we got off of I-95 and he told us to stop," Bennett said. "Billy stopped and Newell had the gun on him. He (Newell) got out and we all had our hands on our heads. We thought they were going to shoot him, but he (Newell) got back in the truck."

Later, somewhere in South Carolina, Newell had finally taken the gun off of King, and he pointed straight ahead.

All of a sudden the gun fired into the dash board.

"He said he was sorry, he apologized for the gun going off," Bennett said.

Shortly after passing Walterboro, Bennett noticed Newell had fallen asleep.

"I punched Mike (Samples) and asked him if he (Newell) was asleep," Bennett said. "He said he believed he was. Mike asked Marlon (Oglesby) if Newell was asleep."

After determining Newell was asleep, the victims debated on doing something to end the two-hour chase.

"We let Billy know what was going on," Bennett said. "We told Billy we were going to jump him (Newell). At first Billy was opposed to it."

When the three hostages in the back decided to take action, Bennett bear hugged Newell.

"Billy reached for the gun as I bear hugged him," Bennett said. "Mike (Samples) grabbed his arms. Marlon got out of the door and came around and we were beating the fool out of him."

"I was going for blood," Bennett said. "I bit him on the ear and Marlon hit him in his face."

The police officers moved in and, to avoid confusion, hand-

cuffed everyone.

"They said let me see your hands, and cuffed us," Bennett said. "I told them that is the guy, and they frisked us. We got to the station and they asked us how we got the gun away from the guy."

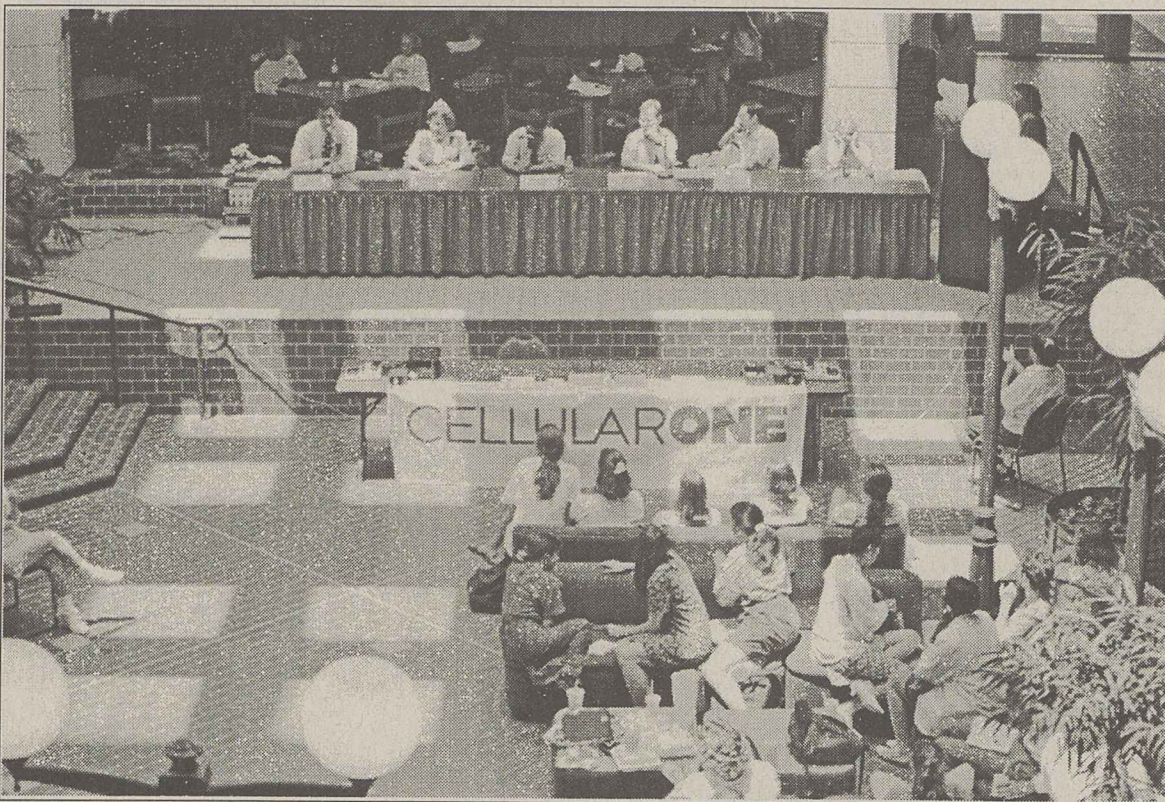
None of the hostages needed medical care, but some were still feeling the effects of the long ordeal.

"Marlon's knee was hurting from beating him," Bennett said.

The hostages and the suspect finally arrived back in Statesboro around six hours later.

"I never expected something like this to happen," Williamson said. "This is something you see on 'Top Cops.' The police did a real good job."

Visualizing disabilities



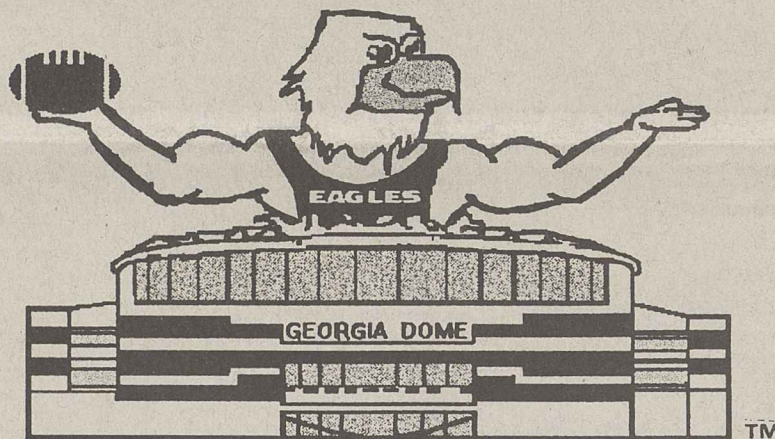
John Munford

Students were given the opportunity to visualize the daily lives of the disabled Wednesday through a slew of events. Along with the panel discussion seen here, exhibits were on tap; Miss Georgia Wheelchair 1994 and Junior Miss Georgia 1994

visited; Glenn McIntyre played Joe Blankenbaker in tennis; wheelchair basketball was held in Hanner and guide dogs and their companions performed a demonstration. This was the second annual GSU "Disability Day."

PARTY IN THE DOME FOR 10 BUCKS

EAGLE CLASSIC



FOLLOW
THE
EAGLES
TO THE
GEORGIA
DOME

THE 1995 EAGLE CLASSIC. Sep. 9, 1995. 3:30 PM
GEORGIA SOUTHERN
VS. MIDDLE TENNESSEE STATE

GSU student tickets only \$10 until the end of Spring Quarter.
Order your tickets now from the GSU Ticket Office — 681-0123

IN GEORGIA

Atlanta installs pay toilets

The Associated Press

ATLANTA — OK, as landmarks go, they won't rival the Statue of Liberty or the St. Louis Gateway Arch. But Atlanta is flush with pride over its new, pay-per-use public toilets.

"We want a clean, sanitized city," said city council president Marvin Arrington, who persuaded his colleagues this week to approve installation of the toilets, which will cost users 25 cents for up to 15 minutes.

Arrington had advocated their

use for a decade after a visit to Paris, where they are a common sight.

Atlanta becomes one of the first U.S. cities to install the permanent toilets. Ten will be erected in downtown Atlanta in time for the 1996 Olympics, and five more are planned before the end of 1996.

The city and Olympic organizers also will provide many more portable toilets to serve the big crowds expected during the Games.

Turky's

Auto Sales

U-Haul

We rent Trucks & Trailers

We sell U-Haul boxes!

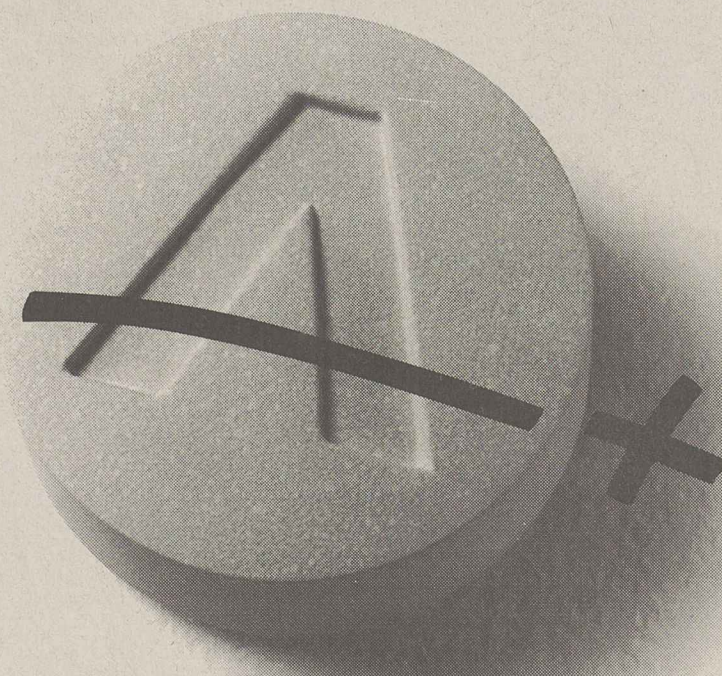
Across Town or Across Country

Reserve Now for summer vacation

Lowest Prices In Town

Call 489-2808

Across from Wal-Mart



Surprise your folks.

When you stay awake in class, you tend to learn more. (Unless you have an uncanny talent of learning through osmosis.) So don't let fatigue get in the way of your A, Revive with Vivarin®. One tablet has the same amount of caffeine as about two cups of coffee.

And it's just as safe. Hey, anything is possible, if you're up for it.



Revive with Vivarin®

©1995 SmithKline Beecham
Consumer Healthcare
Use only as directed.