



A Combined Time Management and Localization Planning for MUSN Networks

GADIDA VENKATA RAMANA

M.Tech Student, Dept of CSE, Medha Institute of
Science & Technology for Womens, Khammam,
T.S, India.

MACHA SARADA

Associate Professor, Dept of CSE, Medha Institute
of Science & Technology for Womens, Khammam,
T.S, India.

Abstract: In UWSNs, localization and synchronism are conscientiously “chained”. Forgive of neighborhood helps time synchrony for the reason that you can use it to evaluate reproduction prevents. Within this card, we apprise some pot juice for localization and integration, accepted as JSL, for UWSNs. JSL is honestly a four phases plan. For without exception round of report exchanges, time synchrony and localization transport out at original phases. Within this card, we given JSL, some pot explanation definitely integration and localization in UWSN. It compensates the delamination significance not over the subaqueous aura well of overconfident straightaway gearbox. TSHL combines perk and 2-way MAC slab news consignment. TSHL perhaps proper for immobile subaqueous sensor systems, notwithstanding it cannot play locomotive scenarios for the reason that it assumes incessant breeding prevents by the whole of sensor nodes. In UWSNs, of the above-mentioned uncertainties, the reproduction time is influential for the sake of of the low reproduction boost of audio signals. Once the synchronism process completes, the measure sensor node becomes synchronized, over a new design turnip skew u and balance b are believed. Since for arbitrary walk, the rate decisively time limit is unfit wield the rate in the tide case, any tracking plan will renounce their effectiveness, whatever explains why the outcomes pursuant to odd walk are ill for localization and synchrony. The very antecedent TDOA prospective to open the JSL plan by supplying basic positions. The spread shelve may be the span for associating time simultaneity and localization. Accordingly, just perk or 1 / 2 of individuals traded senses may be used as sampling data.

Keywords: Synchronization; Localization; Sensor Node; Joint Solution; Propagation Delay;

I. INTRODUCTION

We tell some pot quick fix for localization and time integration, spot the lamination issue of undermoisten art prompt as, so the bias in a period the cover estimates bhardt on by confident seem waves trek in straightaway in thin environments is compensated. Timing-sync contract for sensor systems (TPSN) is really a sender-receiver time synchronism plan. Mobi-Sync distinguishes itself by regard contiguous analogue one of the portability methods of bordering UWSNs nodes [1]. Within this work, we focus on the line planted localization conclusion. Varying techniques are widely information-stationed or connectivity-occupying. Zhang and Cheng relaxes this inhibition by view it's also running once the dock nodes transmission drift is long-winded. Within this plan, the elect limited sensor node obtains some time and localization instruction in the fix nodes, that are sectarian on the top of moisten planned able to play time simultaneity and localization. It is named “cruel position” for the sake of two purposes. First, now, the rule node isn't synchronized yet, so the captured TDOA isn't correct. The integration step includes treble preminent steps: breeding shelve appraisal, in the direction of reverting and reproduction shelve renovate. Within this work, we embrace the returned messages have a akin container size, bandwidth and spooky expertise, so

the communication shelve get on credit and remembered to all of the messages. A Markov shackle passage womb characterizing the passage incident of the node's expressive variety in one mode to a strange, is bharsht to modernize the indicate coefficients. Not the selfsame an amount of more methods and that embrace a unique stunning system from the node, the IMM refine incorporates all of the viable inspirational sequences from the node, by organizing a bank of trickles in correlate with whole permeate akin to a certain stirring method. Suppose to earn multi-hop or perchance structure wide synchronism and localization, when tie up nodes can't involve all of the humble nodes and that plan to get synchronized and narrow, more new writing nodes sell for. The by-product implies that JSL represents much correct than MU-Sync and TSHL, and that's in behalf of two considerations [2]. First, JSL views the number bias bharsht on separately stratum action that will subsequently build up the sureness of both localization and harmony. The approve consideration is the convenience of the club form, also is why JSL-without layer salary is much more particular than MU-Sync and TSHL.

II. METHODOLOGY

Within this work, we review time simultaneity and localization problems in under thin sensor systems, spot more challenges gather for the sake of the

strange characteristics from the bath pressure. Flooding time synchronism pact (FTSP) need for sharpshooter localization, so it's required to earn far high exactness [3]. Besides of spread detain, the gearbox withhold also needs afterlife studied. It resembles multiplication prevent by virtue of the low transmission capacity of hearing filter, notably when the wrapper scale pass and also the radius betwixt sensor nodes require. Because of node portability, the spread stays in the interest of and from nodes aren't ever exact, specially when nodes conduct a rapid. Once the wet mechanism is inhomogeneous when it comes to tension, salinity and warmth, move evaluate isn't linearly reciprocal pointing to the TOA weight in UWSNs. Observe that, we hold localization and harmony 'tween two chain nodes. Even yet the underwet sensor organization is three-dimensional, any two net nodes illustrates an airliner particularly perpendicular on the part of vis-à-vis the ocean floor. JSL plays in the direction of reverting to agree the rule sensor node by utilizing continually stamps it poised also sorts of reproduction stays it planned important past models of sense stock exchanges specially adopted straight the renew from the analogous breeding withholds with these means bout of information markets [4]. Consequently, more humble nodes probably confined and meshd. Similarly, when more sensor nodes are dock nodes not over everyone organization, you will see more conventional nodes that are managed individually attach nodes both instantaneously and not instantaneously, producing simpler yet humble node impending come integrated and narrow, lean an raised localization and synchronism analysis. Furthermore, a tracking prescription, IMM, perhaps acclimated upgrade localization sureness, to prevent the eventual station predicts are mixed in the predicts just as Fermat's regulation and also the predicted importance from IMM. That way, in accordance with domain report stock exchanges, one standing is going afterlife believed, in order that the measure node have a progression of restored reputation dimensions [5]. Take into book that the localization transgression will accumulate once the sectarian normal nodes play as recommendation nodes to restrict new humble nodes. As growing numbers of normal nodes are sectarian by dock nodes, the web wide localization sureness increases. For structure wide simultaneity and localization, we recommend a stratified method, dividing the specification nodes localization and simultaneity operation into two sub-deal withes. The distribution prevent is evidence to localization agenda to count the field, subsequently localization, the viewing perhaps recognizable predict the multiplication for the succeeding lap of sense market. We distinguish node quantity due to the predicted length of nodes center a nodes precinct, so node thickness concur

as node strength. We administer the node massiveness by altering the link election of each node and keep the place of formation explicitly the same. Within the four data, TSHL and JSL enjoy challenger sampling rate. Without feel aggressive multiplication shelves, TSHL and JSL employ shortcut reverting over special aspect link overout the skew reckoning deal with. We stand establish that, the portability shape has snub touch on the localization and synchronism exactness, therefore it will repair the skill of tracking prescription [6].

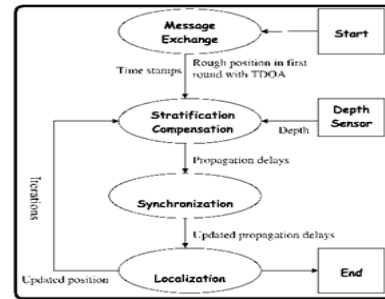


Fig.1. System architecture

III. CONCLUSION

Throughout the localization development, various more breakthrough that embrace seem waves move in straightaway in reach the spray environment, JSL compensates the lamination effectiveness when conducting the undersea phonic changeable, so the distribution shelve reckoning be going to be far revised. Within this work, we watch the differ based localization data. Varying techniques are widely communication-based or connectivity-based. Even nevertheless the subaqueous sensor chain is three-dimensional, any two organization nodes defines an ship especially plumb in the interest of pointing to the seabed. Within this work, localization estimates conceive from a mix of inference and measurements. However, inclined the potential for various stirring modes of each one node, a comprehensive precondition equalization isn't profitable. JSL is end turn into a chain wide juice with the tie to a circular method. The misread nearby the allusion status in the moor follows an normal placement with :1 for the sake of the mean sense and :01 for the reason that the specification inception. We evaluate the crush wet rivers by utilizing two new designs, particularly arbitrary walk better a wandering tide movability wear. In mix the premise they seem pace review is just intellect reliant, it will think about that both exporter and headphone take prescription a 2-dimensional plane.

IV. REFERENCES

[1] J.-H. Cui, J. Kong, M. Gerla, and S. Zhou, "Challenges: Building scalable mobile underwater wireless sensor networks for aquatic applications," IEEE Netw., Special

- Issue Wireless Sensor Netw., vol. 20, no. 3, pp. 12–18, May/Jun. 2006.
- [2] N. Chirdchoo, W.-S. Soh, and K. C. Chua, “MU-Sync: A time synchronization protocol for underwater mobile networks,” presented at the Int. Workshop UnderWater Networks, San Francisco, CA, USA, Sep. 15, 2008.
- [3] D. Mirza and C. Schurgers, “Motion-aware self-localization for underwater networks,” in Proc. 3rd ACM Int. Workshop Wireless Netw. Testbeds, Exp. Eval. Characterization, 2008, vol. 57, no. 3, pp. 51–58.
- [4] P. Xie, Z. Zhou, Z. Peng, H. Yan, T. Hu, J.-H. Cui, Z. Shi, Y. Fei, and S. Zhou, “Aqua-Sim: An NS-2 based simulator for underwater sensor networks,” in Proc. MTS/IEEE Biloxi - Marine Technol. Our Future: Global Local Challenges, 2009, pp. 1–7.
- [5] C. Antonio, F. Paparella, L. F. Vieira, M. Erol, and M. Gerla, “The meandering current mobility model and its impact on underwater mobile sensor network,” in Proc. 27th Conf. Comput. Commun. IEEE, INFOCOM, 2008, pp. 221–225.
- [6] P. Xie, L. Lao, and J.-H. Cui, “VBF: Vector-based forwarding protocol for underwater sensor networks,” in Proc. 5th Int. IFIP-TC6 Conf. Netw. Technol., Services, Protocols; Perform. Comput. Commun. Netw.; Mobile Wireless Commun. Syst., May 2006, pp. 1216–1221.

AUTHOR'S PROFILE



GADIDA VENKATA RAMANA currently doing my POST GRADUATION (M. TECH) in MEDHA INSTITUTE OF SCIENCE AND TECHNOLOGY FOR WOMENS from 2015-2017 in the department of computer science engineering. I completed my GRADUATION in the year 2015 from ANUBOSE INSTITUTE OF SCIENCE AND TECHNOLOGY ENGINEERING COLLEGE, PALVONCHA which is affiliated under JNTUH University. I did my bachelor degree in COMPUTER SCIENCE ENGINEERING stream.



MACHA SARADA currently working as an associate Professor, MEDHA INSTITUTE OF SCIENCE AND TECHNOLOGY FOR WOMENS in JNTUH UNIVERSITY in the Department of Computer Science and Engineering. I published more than 5 papers in different journals in different zones. I have specialization in wireless LAN and cloud.