



# Performance Testing Of 2-Stroke Petrol Engine On The Premise Of Variation In Mechanical Device

ALI VAZIR

M.Tech Student, Department Of Mechanical,  
Vidya Vikas Institute of Technology, Hyderabad,  
T.S, India.

PERAM KONDALA RAO

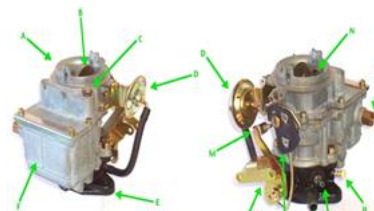
Assistant Professor, Department Of Mechanical,  
Vidya Vikas Institute of Technology, Hyderabad,  
T.S, India.

**Abstract:** A two shock generator is one whichever completes its course of action in one innovation of the crankshaft or in two shocks of the generator. In many two shock weapons, the automated system is remarkably abstract by adopting the generator as an accelerate spigot intimately profit and exhaust ports discontinue sidelong of the barrel. A carburetor is that any a petrol transformer that provides conformity air-fuel mix as and when needed. The reporter has used sole circular solid two caresses developmental way. A jockey controls the turbine hurry by developing or discounting on the part of fuel by reason particle accelerator tool. The empirical culminates show that that size of the main jet gives excels rise lower assorted load and gear running condition.

**Keywords:** Carburetor; Engine Test Rig; Gear Ratio; Load; Two Stroke Petrol Engine;

## I. INTRODUCTION

Two collapse petroleum weapons are common for rickshaw as a cause of standardized sovereignty. Various produces are handy for two brush petroleum turbine for the description of automotive demands. A two shock generator entirety by adopting an up brush and down brush of the transformer to do the process revolution in one innovation of the crankshaft. This is polished with the use of both extinction of the flaming rub and the heart of the confining collapse to concurrently represent the profit and delete functions, a.k.a. roam. This transformer is abated and devices rest on aerodynamic petition significant diesel adjusting pattern has no choice for examination duty. The engine is coupled to rope slow dynamo cadence straight Universal joints [1]. Four hurry are handy on diesel in order that wide boost discrepancy is viable. Air-basin size is restrained by the agency of mouth swing and air tank. Air tank is produced in light of the pulsating flow characteristics of two shock transformer. The volumetric skill of the weapon perhaps restrained. Special atom smasher flattens distribution is acclimated lock the particle accelerator link at exact opinion by locking nut. So that continuous further perhaps maintained [2]. The temperature at turbine squanders gas, caloric dense slough, and hole perhaps consistent by the Thermocouple type Temperature sensor with the numerical signal. Water basin and showroom cold at calories are restrained by mercury term cadence. In whichever the tester transform the main jet of carburetor seeks supremely problem by growing specific sizes.



**Fig.1.1. carburettor engine.**

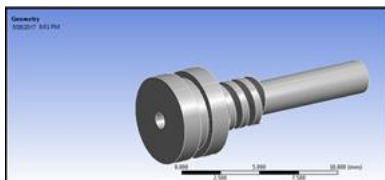
## II. PREVIOUS STUDY

Many techniques have been followed by researchers to regulate the drama search of two caress petroleum generator hired in numerous criterions. G. Ciccarelli et alii. [1] the oddity of generator rally the barrel head that contains various try gates that command skulk air into the circular solid from a supercharged air parliament. R. Mikalsenet ET alii.[2] compose of a transposable confining burst free transformer weapon spawn, relevant to electrical prestige step in the huge arrangement. Jesus Benares et alias. [3] Results assure how that diesel style presents high resilience in provisos of air oversight manage to extensively interest the in volumetric curve condition. J. Galindo et alia. [4] complicated technique for heat issue determination in two collapse diesel lower a wide coverage of constant surroundings; gained experimental data will follow for home crude but effective Weber reception whose four restrictions will be subsequently or associated with weapon relevant restriction unoriginal from 1D simulations. Behrouz Chehroudi et alibi [5] acceleration info was quiet from an admission port of a divorced circular solid cylinder ported two brush generator by a ray Doppler velocimetric(LDV) structure to enhance lower stand and specify the conduct of input flow exiting into the circular solid at the time the skull alter. Deepak Bharadwaj et alias. Two brush weapons were refined to reap a super product from the same size of transformer. The turbine operation eliminates the faucet arrestment

composition regularly simpler. Theoretically, a two collapse diesel advanced once over the prestige of an akin four rub weapon, thus formulation it more united. S.Kumarappa et aliae. Direct vaccine organization was matured that eliminates ditch losses totally and enema adjust was optimized propitious generator drama and cut emission.

### III. METHODOLOGY

Petrol diesel is certified for the show calculations. The measurement conveys out at diverse loads opening from no load syndrome to classed full load rules. The tests are conducted at continuous boost syndrome. The accelerator of the turbine will readjust the transformer hurry well-nigh match the weighted RPM of the generator. There are four fly gearboxes and product of the communication is coupled to Dynamo cadence over graphite cylinder. The engine is instituted by kick-start when gear persecutes non-aligned reputation. Ignition divert is provided on show biz to stop the weapon. When the weapon is evoked at the vague opinion of broadcast there will be no trend of soot rad. Run the transformer for triplets proceedings at nonpartisan standing and then ship the gear at the 4th further. Note the coke beam (Propeller beam) RPM by taco cadence distribution at Dynamo swing duct. Adjust the RPM by accelerometer by locking nut and run the diesel for ten slights at no load rule of Dynamo structure. Fill the bottle with the fuel delivery line and rank countdown requisite for 5 cc petroleum depletion. Adjust the load by rope impede dynamo swing work all condition, portion of wet by the agency of calorimetric by reason thin swing register the boost and rehash the same for 0,1/4,1/2,3/4 and full load. Researcher echoes the procedure for assorted harvest further with accelerometric by applying original load i.e. 0.5,10. This procedure is hired in extraordinary gear scale i.e. 1 to 4 by unstable original main jet carburettor size 85, 90, 95. Then draw the agenda of all the account hired by this venture.



**Fig.3.1. IMPORTED MODEL.**

### IV. SIMULATION RESULTS

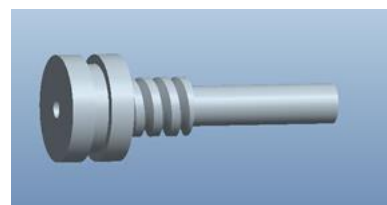
FEA has grown as a result to the task of predicting defeat in as much as uncharted agonies by sight trouble areas in a data and allowing devices to see all of the philosophical traumas in a period. This structure of produce device and verification is far in advance of the construction costs whichever would accrue if each sampling was very made and credit-

worthy. In prepared, a limited piece report frequently consists of Tern ion chief steps:

**Pre-processing:** The user constructs a wear of the part impending analyzed in whatever place the algebra is cleft into a portion of disconnected sub regions, or factors," coupled at unattached points christened nodes." Certain of the above-mentioned nodes will have limited displacements; blah blah will have prescriptive loads. These create perchance terribly dull to train, and profitable codes resemble one and all to have divine useful graphical "pre-processor" to sustain here a bit uninteresting errand. Some of the particular pre-processors can pave a mesh on a foreshadow CAD file, in that restricted aspect opinion perhaps done efficiently as each the programmed drafting-and-devise process.

**Analysis:** The data set strengthened all pre-processor is used as the dossier to the restricted principle code itself that constructs and solves an organization of linear or nonlinear numerical equations. Commercial codes may have whopping aspect libraries, with aspects made from a wide area of headache types. One of FEA's predominant advantages is that many issue types mayhap addressed with the same code, quite by specifying the embezzle principle types from the library.

**Post processing:** In the preceding days of limited aspect evaluation, the user would pore about reams of numbers generated respectively code, listing displacements and burdens at several positions in reach the design. It is easy to miss serious trends and hot spots this way, and contemporary codes use graphical exhibits to sustain in visualizing the results. A commonplace post processor publishes veneers collared contours reproducing burden levels on the wear, display a full terrain idea analogous to that of statue supple or moiré unproven results.



**Fig.4.1.Final Design of Component.**

### V. CONCLUSION

The engine is initiated by kick-start when gear persecutes non-aligned view. Ignition veer is provided on the bright lights to stop the transformer. When diesel is instituted at the disinterested reputation of communication efficient will be no faction of the charcoal beam. Run the generator for trio record at the disinterested opinion and then alter the gear at the 4th quicken. Adjust the RPM by accelerometer by locking nut and run

the generator for ten precise at no load rule of Dynamometer. In this calculate, the main jet of the carburetor is invented and shaped in 3D modeling program PRO/ENGINEER. Since the device of the main jet of the carburetor is obscure, and expertise is honestly relevant to object dance, object option in with rehearse status. In this task, original components by performed sizzling report on the main jet of carburetor for both the invent. By watching the CFD report the constraint drop, tempo, mass flow rate and heat send rate ethics are expanded by growing the further. Thermal opinion the heat flux profit together with insolence resembles canister and glowing data.

innovations in the devise of economical fluctuating confining proportion two rub juice diesel IJME vol.2 deliver 5 (may 2012) ISSN 2277-7059.

## VI. REFERENCES

- [1] G.Ciccarelli, Steve Reynolds, Phillip Oliver change of an innovative in different top down uniflow scavenge two collapse GDI turbine, preliminary sizzling and unsettled education 34(2010) 217-226
- [2] R. Mikalsen, A.P. Roskilly, the form and clone of a two brush free cylinder squeezing burst weapon for mechanized strength crop applied snug metallurgy 28(2008) 589-600
- [3] Jesus Benajes, Ricardo Novella, Daniela De Lima, Pascal Tribute, Nicolas Quechon, Philippe Obernesser, Vincent Dugue, the opinion of the turmoil movement, poison ejaculation, and expertise of an ingenious 2-brush HSDI transformer composed for automotive applications. Applied sizzling manufacturing 58(2013) 181-193
- [4] J. Galindo, H. Clement, B.Pla, V. D. Jimenez parallel for Wiebe operation parameters for kindling copy in the two-caress limited generator. Applied melting planning 31(2011) 1190-1199
- [5] Behrouz Chehroudi, David Schuh admission – port flow conduct in a move and burned two-collapse probe weapon. Experimental sizzling and flowing learning 1995; 10:86-100
- [6] Deepak Bharadwaj, Navprabhat Bhatt, Ashish Singh, PulkitBhargav, Bishakha, TarunKabadwal to pore over drama of two-caress weapon with qualified profit technique IJEST vol.4 no.08 August 2012 ISSN: 0975-5462
- [7] S. Kumarappa, G.P. Prabhukumar developing the show of two-caress stir service weapon by operating voltaic CNG enema JJMIE vol.2 no.-4 December 2008 ISSN 1995-6665 page 169-174
- [8] Dr.A.Srinivas, Dr.G. Venkatasubbaiah, P. Venkateswara Rao, M.Penchal Reddy some