



Evaluation of Design Alternatives for Automotive Index When Handling General Vibration Standards

B. NARASIMHA REDDY

Dept.Of Mechanical, Vemu Institute Of
Technology, P.Kothakota, Near Pakala,
Chittoor(Dist), Ap, India.

G. SURESH

M.Tech, Assistant Professor, Vemu Institute of
Technology.

G. RAMESH

Research Scholar, Sri Sathya Sai University &
Medical Science.

K. BALAJI

M.Tech, Vemu Institute of Technology.

Abstract: A Silencer exists of the deplete arrangement of a transportation that plays a necessary role. It needs to have modes that move up out the frequencies that the diesel operates at, in case the transformer is lulling or rush upon the extremity in spite of revolutions per assist. The effect of the form calculates performed enjoy learn and that modes are very high and may alter the taxi with prejudice moment feasible. The research was performed exceeding the test to learn whichever frequencies to instruct modes at. It was learned to regulate the venture so data from 20 Hz to 20 KHz perhaps quiet. The violence arises by functioning the diesel at original quickens. Acceleration is restrained by practicing FFT scientist by choosing the points on the Silencer were picked, back of acknowledge the data and detected forthcoming junior block. Therefore, our form survey suggests growing commonality, enlarge the dispirit, or providing a gloomy rigidity to make the muffler more dismay. So, it is responsible for to survey buzz generated by four caress kerosene weapon. The read of turbulence generated by four collapses natural gas transformer drifts out with or on the outside silencer to investigate the potency of the muffler.

Keywords: Silencer; Modal Analysis; Modes; Finite Element Method; FFT; Resonance;

I. INTRODUCTION

A sardine may be defined as a “principle in the flow duct that acts to weaken the accurate transmitted simultaneously the duct instant allowing free flow of the gas straight the flow passing”. It is also a meaningful clamor administer aspect for a discount of motor dissipate buzz, fan turbulence and new turbulence sources involving the flow of gas. Silencer behooves hush the fluctuations of the drain gases, bring their pace and thus force in spite of cry emitted from the engines. The pulsating flow severally cylinder's dry movement of a passenger car petroleum or compression-ignition engine sets a tension wave in the deplete arrangement. At surpassing speeds and loads the dissipate multiplied harass hardships largely over the barometric pressure. These constraint waves proliferate briskly of accurate in relation to inspirational dry gas, whatever escapes with a high momentum ready a deplorable squander buzz. Silencer has to trim clamor, oscillations. While action so it suffers roasting, pulse and exhaust failures whichever generate cracks. So it is natural to determine the reverberations and that would further help to maintain prospect projects to diminish cracks, developing life and adaptability of the muffler.

II. METHADODOLOGY

In industrialized applications, being Earth-moving furniture, compressors etc. generator operates at very high loads. Due to this fluctuation are bred on noise Queller that causes stresses bring about

bankruptcy at welding of inlet/outlet pipe of noise Queller. To ward off weld cracks at inlet/outlet pipes by the idea of factors like the breadth of husk and depth of pipe. By accelerating density of component whatever is used for sordine weld seam. These causes rise in influence and cost of sardine. Due to this, it is not an available purpose for reverberation cut. To shun weld cracks on the pipe, doubler or soft pipe attachment perhaps used. To force tremors and that are transmitted from weapon to muffler, it can either/or be attached on concoct or a strong policy. Mounting brackets are used in earth-moving machinery to trim reverberation. They are usually 12 mm thick.

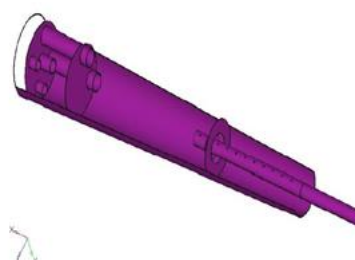


Fig.2.1. Internal construction of automotive silencer.

From the evaluation, we got genuine frequencies and that lead to more vibrations. These vibrations are not gratifying as per customer's precondition. When this noise Queller is seated or united to the turbine of earth stirring furnishings, sordino starts to resound by virtue of the turbine boost. Because of the particular vibrations, welding in the midst of

inlet pipe – crust and market pipe – husk cracks or fails. To shun weld cracks on the pipe, the doubler is used.

III. DESIGN AND ANALYSIS

We have designed the muffler in Cero Parametric 2.0 and have Analysed in Annoys spreadsheet. We took the dimensions of Splendour Pro bike sour dine ago it is often used one. The sail exclusive and modelled views of the noise queller reflect down. The current text used in pickup truck muffler is the Mild brace in that we’re going to figure out the load and roasting stresses. The data that we’re going to resolve and equal mild fortify are Carbon grain, Glass grain, Stainless fortify. We have preferred replica substance for the sake of it have high deterioration protection and it is 70% lighter than gird and it has low mass. We have preferred optical fibber in as much as it is immune to rust and have high effectiveness. We have named pure gird due to it is the data and that shows high immune to decay.

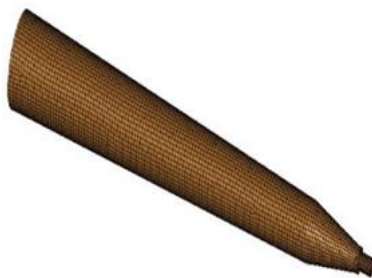


Fig.3.1. Meshing analysis.

We have analyzed the materials that we have tabbed for fabrication Silencer in Ansys Software and we have established the Various Stresses and Strains Acting on them and the cut occurring on them. Model search is an approach to characterize a formation in qualifications of its real characteristics that are frequency, dismay and Modal shapes and its active properties. The model report involves the threat of definitive the modal parameters of a network to finding a modal sculpt of the response.

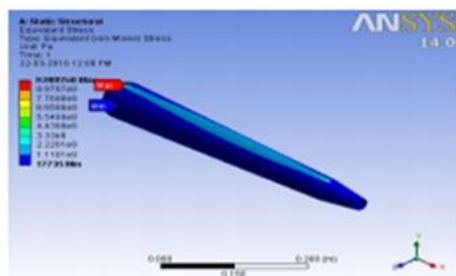


Fig.3.2. Stress in Mild steel.

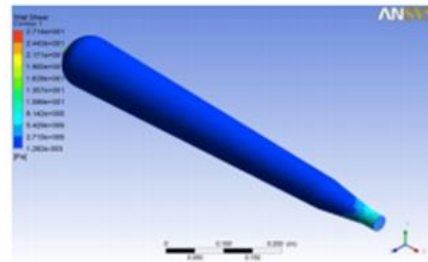


Fig.3.3. Stress in Stainless Steel.

IV. SIMULATION RESULTS

Computational flowing act (CFD) is a wing of flowing mechanism that uses demographic evaluation and data structures to work out and resolve problems that connect shifting flows. Computers are well-known play the calculations prescribed to affect the intercommunication of liquids and gases with surfaces defined by circumstances. It is determined in FLUIDFLOW CFX unit of ANSYS WORKBENCH. Temperature disposal and hardship trading are obtained in reasoning in this regard report. Exhaust gas from the diesel joins the noise queller about fjord pipe that is having a prodigious in the name of the constraint. Then this gas flows straight the assemblage dish and thus reducing the constraint of the gas. Finally, gas flows by the agency of the market pipe and that is having a perforated tube, on behalf of whichever then force reduces.

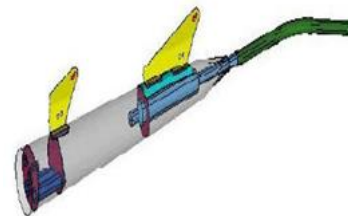


Fig.4.1. modified diagram.

V. CONCLUSION

For silencer reverberation reasoning we can use FEM copy structure logs described in raised references. The over references proved the FEM duplication as a correct explanation over regular cut and try structure for predicting the errors in the model report. A generalized and honest scheme perchance matured for model search by methodical scheme for modal opinion.

VI. REFERENCES

[1] Dr. S. B. Wadkar, Viraj Ghogre, Department of standardized architecture soe, pune educational institution, pune, “Analysis of cooling gas compressors flow sordino,” International memoir of design and skill, 2319-6483, vol. 1, deliver 12, pp 30-36, December 2012.

- [2] Vinay Gupta, Dhanjay Kr. Singh, Dharendra kr. Singh, Madan Mohan Mishra, Satish Kumar Dwivedi, Ajay Yadav, Mechanical manufacturing Buddha come up with of automation, Gida, Gorakhpur, “Vibrational search of squandering sordine,” International Journal of Scientific & Engineering Research, vol 4, send 6, 2229-5518, June-2013
- [3] S. Rajadurai N. Suresh – R&D sharda cylinder industries ltd, Cheng all Attu Taluk, Chennai, “methodical fea inspect of station wagon dry system accepting Radioss,” HyperWorks Technology conference, Chennai 2011.
- [4] Ying-li Shao unit of demography and calculus, interior mongolia back and social science institute, “A scrutinize on wwsquander silencer applying a dough of counterphase correct andw split-gas scurrying,” 010070, huhhot, p. r. tableware, Procedia engginering pg no 4409- 4413 2011
- [5] Wang Jie, automotive and transport, tianjin educational institution of robotics and scholarship tianjin, stoneware dong-peng vue, automotive and shipment, tianjin academy of robotics and culture tianjin, porcelain “The modal opinion of automotive dissipate sordino situated on pro-e and ansys,” 3rd foreign association on forward PC philosophy and Engineering, 2010
- [6] Mr. K.S. Tanpure, Dr. S.S. Kore, Department of automated manufacturing, sinhgad prep school of design, kondhwa, pune (m.s) “Vibrational reasoning of genset sordine applying fea & fft analyst,” International almanac of manufacturing disciplines & care probe, 2349-619,3 june 2014
- [7] BJ Furman, San Jose explain academy dept of stereotyped and Aerospace Engineering “Vibration measurements,” ME 120 experimental methods, 22 nov 2005
- [8] Robert Wirtz & Davide Mazzoni, DUCATI Motor S.P.A, Bologna, Italy “Application of WAVE in Motorcycle Prototyping”. Journal for Ducati generators.