

Eugene M. and Christine E. Lynn

# Library Monthly

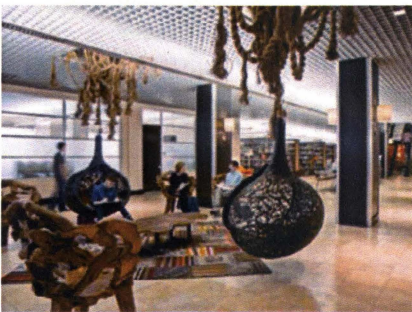
Volume 3  
Issue 2  
October/November 2016



## Library Renovation: Preliminary Planning

BY AMY FILIATREAU, LIBRARY DIRECTOR  
afilatreau@lynn.edu

Working with Development, Purchasing, and Auxiliary Services, we've hired a design group to plan a refresh of the library's spaces and furnishings. They will be meeting with focus groups of students, staff, and faculty, and will prepare a plan for potential improvements to benefit student study spaces, promote both collaboration space and quiet study space, and provide more technology throughout the library. We welcome your input! Contact me if you have ideas or opinions about our library's spaces and design, and stay tuned for more information as this exciting project moves forward.



*These libraries show some of the super cool new options for library spaces that enhance both collaboration and quiet study. Left to right: The Jen Library at Savannah College of Art and Design; Tanglin Trust School in Singapore; Amsterdam Public Library.*

**The Zombie Apocalypse**  
Why are we fascinated with the walking dead who want to eat us? By Paul Pastor

p. 2  
The Library has Information on Everything...

p. 3  
Lynn's New Knowledge Imaging Center...

p. 5  
Welcome Bethany!



# The Library Has Information on Everything or How to Research the Zombie Apocalypse

BY LEECY BARNETT, REFERENCE AND INSTRUCTION LIBRARIAN  
lbarnett@lynn.edu

In my years as a Reference Librarian I have read some strange assignments and listened as students expound on some truly weird topics. So in honor of Halloween, I thought I would research the Zombie Apocalypse, as an exercise to show that the library has information on all kind of usual topics (and if we don't have it we can get it for you or your students).

First, to get some background information, I turned to Credo Reference database. They have a topic page devoted to Zombies. Here, I found out that in Voodoo, "a zombie is supposedly someone who has died and been brought back to life ...and is now a body without a mind (or a soul), completely subject to the will of his controller."<sup>1</sup>

Doing a search on "zombie" the library homepage, I found this most interesting ebook: a search within this ebook yielded 79 mentions of apocalypse. I marked this book for further study.

## The year's work at the Zombie Research Center



by Edward P. Comentale, Aaron Jaffe

eBook 2014

Held by: [Lynn University Library](#)

Then I decided to refine my search to "zombie apocalypse."

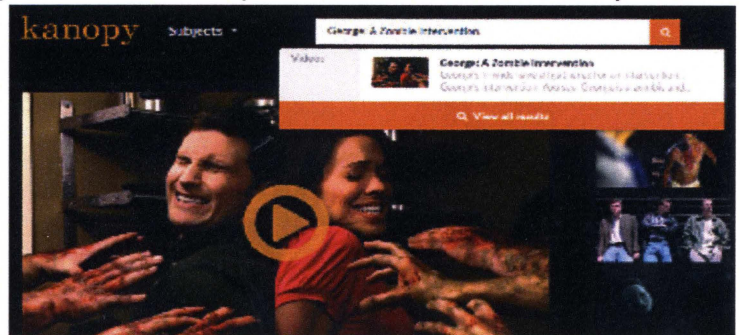


I found an interesting article in *Christianity Today*. I thought this might explain Amy's fascination with the oddly popular show *The Walking Dead*. The author explained, "for all the screams and splatter, these common story elements provide a backdrop for filmmakers to talk candidly about the human condition. The first three entries in seminal zombie director George A. Romero's *Dead* series are fine examples of this, using the cannibal corpses to skewer major cultural issues such as racism, consumerism, and abuse of human power."<sup>2</sup> I should have known, if Amy liked it, it must have a deeper meaning.

I was curious to see if any peer-reviewed articles have been written on the Zombie Apocalypse. Sure enough, I found CDC's Use of Social Media and Humor in a Risk Campaign—"Preparedness 101 Zombie Apocalypse" from *The Journal of Applied Communication*

*Research*. Unfortunately this journal has an 18 month embargo restriction for databases, so I was not able to look at it immediately. But I can easily fill out a request to get it from another library. I am curious to learn how and why the CDC has taken time from dealing with ebola and zika to address the Zombie Apocalypse!

Finally, I was sure the library has some great zombie films. I checked our newest database, Kanopy, a great source for streaming movies and documentaries for film lovers and found, *George A. Zombie Intervention*. Sounds like a classic!



So I hope you can see that no matter what creative and unique assignment you give, the library has information that will help your students. Please send them our way! ~

<sup>1</sup> Zombie. (2007). In U. McGovern (Ed.), *Chambers dictionary of the unexplained*. London, United Kingdom: Chambers Harrap. Retrieved from <https://lynn-lang.student.lynn.edu/login?url=http://search.credoreference.com/content/entry/chambun/zombie/0>

<sup>2</sup> Pastor, P. (2013). The zombie apocalypse. *Christianity Today*, 57(1), 80.



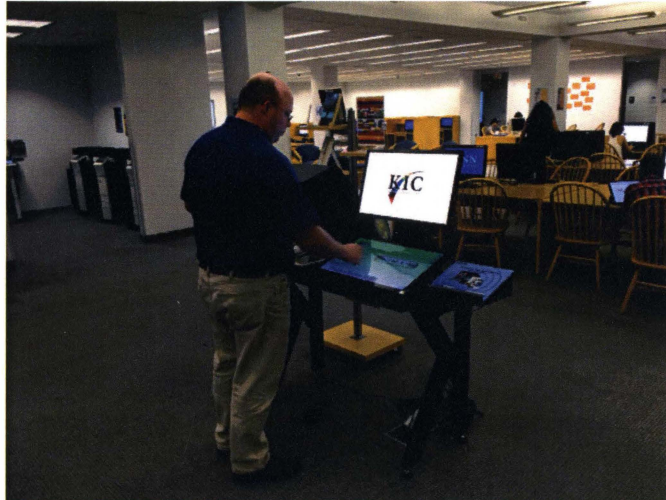
# Lynn's New Knowledge Imaging Center Unlocks Opportunities for Students

BY ADAM YURKIEWITZ, STAFF WRITER, iPULSE  
ayurkiewitz@email.lynn.edu

The new semester has brought upon many changes throughout campus, one being Lynn Library's high-tech scanner for all to use.

The Knowledge Imaging Center, created by the Digital Library Systems Group, is equipped with a Canon EOS DSLR camera, bright LED lighting, and a touchscreen. The technology allows faculty, staff, and students to scan textbooks, magazines, and research material and then save a copy for future reference. One of the many benefits offered by this new system is the ability to search through vast amounts of data in just seconds.

It works like this: Once at the scanner, select the preferred language, place a textbook/magazine/document on the scanning base, and tap "Scan." The scanned material is then available to save on a USB drive, store in the cloud, send via email, or upload to a mobile device.



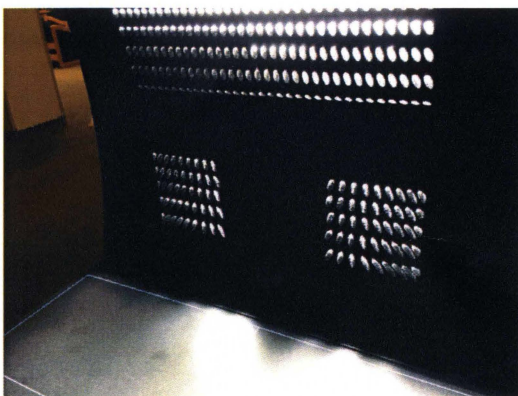
Even though the Lynn Library offers 223,006 eBooks, some books are only available in print. Students can scan the sections of these books as needed. The same applies for students taking advantage of the reserved textbooks offered at the library. These materials, saved as PDFs, are searchable, saving students time when reviewing their course material.

According to Jared Wellman, Digital Resources Librarian, the scanner even offers an option to scan using a foot pedal for students with dense textbooks and music scores to scan.

"I think the scanner is awesome in every aspect," said Barbara Calixte, senior. "I needed some textbooks for class that I was not able to purchase and the scanner allowed me to get the chapters I needed at no charge."

As textbooks continuously sell for hundreds of dollars and as most college students find themselves on a budget, having the option to scan a textbook chapter saves students hundreds of dollars each semester. For those new to scanning, the librarians are always happy to assist. This semester, check out the new scanning system located on the first floor of the library and simplify your life, one page at a time. ~

Originally printed in Lynn University's *iPulse*





# 12 Things Faculty Need to Know About The Library

BY ALISON LEONARD, ONLINE LEARNING & REFERENCE LIBRARIAN  
aleonard@lynn.edu

1. Your myLynn username and password = access to library resources.
2. The Online Learning and Reference Librarian can help add robust content to your iTunes U course(s), including videos, eBooks, articles, and images.
3. Chat with a librarian Monday to Thursday, 9:00 AM to 8:00 PM, Friday 9:00 AM to 5:00 PM, Saturday 11:00 AM to 6:00 PM, and Sunday noon to 8:00 PM.
4. The Databases tab on the library page can be searched by Subjects or Types (see the drop-down lists). We subscribe to over 100 databases for articles, video, music, and images, and more.
5. There is a liaison librarian for your college. Invite us into your classroom to demonstrate searching for credible, reliable content for students' assignments. There is also a Subject Guide with the best databases for articles, eBooks, and websites on your topic.
6. Librarians can help students find articles and other reliable content for their papers. They can drop by the library, email, chat, call, or arrange a time to meet.
7. Librarians help students cite their sources.
8. Under Citation Tools, there is a pre-formatted APA template in which students can begin typing their papers. There is also a pre-formatted annotated bibliography under Citation Tools in the APA link.
9. If we don't have it, we'll get it! If an item you want is not available in the Lynn collection, you can use interlibrary loan, and we'll search worldwide to find what you need.
10. Librarians will come to your classroom to demonstrate searching for articles, eBooks, videos, and websites specific to your topic(s).
11. Grammarly, an online proofreading tool, can be found on the Lynn Library website. It's easy for you or your students to create an account, and it checks text for grammar, punctuation, and style while featuring a contextual spell-checker and plagiarism detector. Ask your students to use it before they turn their papers in.
12. Fall hours are Monday to Thursday, 7:30 AM to midnight, Friday 7:30 AM to 6:00 PM, Saturday 11 AM to 6 PM and Sunday noon to midnight. (Easy thing to remember: The library is open until midnight Sunday to Thursday). Alternate study spaces open 24/7 are the IBC Finance Lab, IBC Study Rooms, and the Elmore Dining Commons.~



## Call for iBook Proposals

BY JORDAN CHUSSLER, ACADEMIC EDITOR  
jchussler@lynn.edu

**T**he Lynn University Digital Press recently adopted new workflows, and now any faculty interested in authoring (or co-authoring) an iBook can submit a proposal during our thrice-annual open calls. These will take place from September through October, December through January, and May through August of every year.

Our October call for proposals just closed and we received several submissions. Begin thinking about what you might like to propose in December! We encourage all of you to submit proposals as we further our efforts to reduce burdensome student textbooks costs here at Lynn.

The Proposal Form can be found in two places: on the CII site under myLynn's Academics tab, or on the library website under Archives & Digital Press in the For Authors section.~



## "Word" Processor for Music Notation

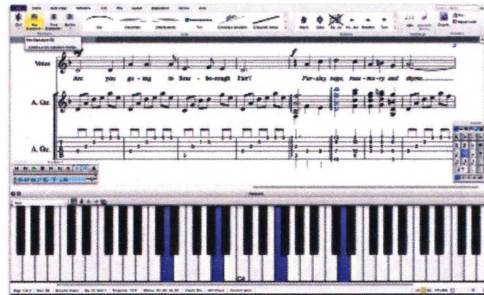
BY TSUKASA CHERKAOUI, MUSIC LIBRARIAN  
tcherkaoui@lynn.edu

Renowned composers of the past, such as Bach and Beethoven, wrote their music on manuscript paper using fountain pens. They dipped their pens in black ink and scribbled music symbols to express their creations. Today, composers can type their music on a computer.



In Lynn's music library, there are two computers equipped with two different types of music notation software: Finale and Sibelius. These programs are essential tools for creating sheet music for composers, songwriters, and arrangers. Just like Microsoft Word, Finale and Sibelius are designed with the idea of WYSIWYG (What You See Is What You Get). Users are presented with the five-line staff and clefs where they can place music notes, rests, dynamics, articulations, etc. When users finish typing the music, they can print it for musicians to use in performances.

The music notation software presents us with advantages that Bach and Beethoven could not enjoy. First, the software automatically creates individual parts from the full score. In the past, music copyists had to create the parts after extracting them from the full score. Second, the software plays the music back to the creator. Because users can instantly hear their composition, they can detect mistakes and edit sections as they compose. Bach and Beethoven were unable to hear the music until it was performed for them.



The technology employed by Finale and Sibelius has made music composing easier and more accessible, and we can now expect more great music from our aspiring composers here at Lynn University. ~

## Welcome, Bethany Oudersluys Our new Reference Librarian

Where were you working before you came to Lynn University?

Before coming to Lynn, I was the Development Associate at a small nonprofit organization where I was responsible for social media, website, and database management, as well as assisting with event planning.

What do you hope to accomplish in the position of Reference Librarian this semester and beyond?

I hope that my presence at Lynn will make everyone's life easier—especially students'—and that having access to a librarian every day of the week will make a difference in their academic success. This is my first time working for a university and I am thrilled to be here!

What are your hobbies?

Not to state the obvious, but I love reading. I'm also a big music fan; I attend concerts and shows regularly. I'm very excited for the upcoming Riptide Music Festival on Ft. Lauderdale beach at the beginning of December.

What is one unique thing that you'd like Lynn faculty to know about you?

My first post-graduate job was working in a military museum and library for a year, including three months on a special project working with Army maps from World War III!

Anything else that you would like to add?

Bonus: I've only lived in Florida for about two years (I'm originally from Michigan), and I'm already completely intolerant to the cold. ~

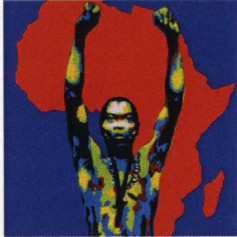
Feel free to stop by the Library and introduce yourself to Bethany or email her at [boudersluys@lynn.edu](mailto:boudersluys@lynn.edu)





# kanopy

WATCH TODAY!



kanopy WATCH NOW ON

*Finding Fela*



kanopy WATCH NOW ON

*Civil War*



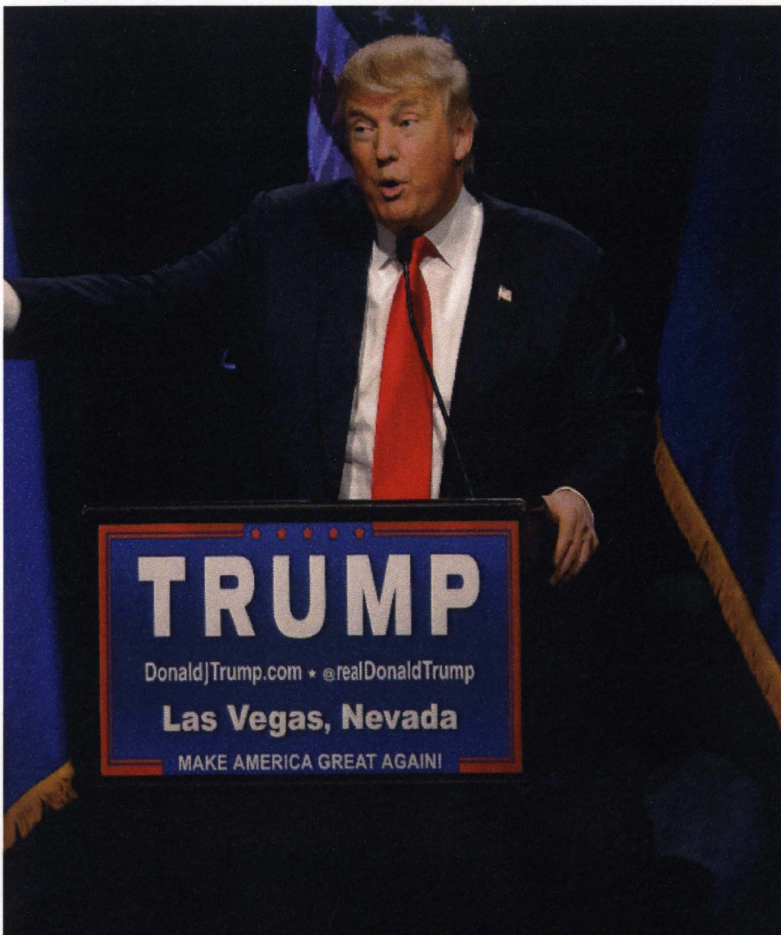
kanopy WATCH NOW ON

*Girl with the  
Dragon  
Tattoo*

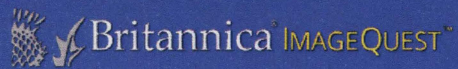
Browse over 26,000 feature films, documentaries, and training videos which includes Criterion Collection, PBS, HBO, BBC, & much more!

Films can be watched anywhere, anytime by faculty, staff, & students!





# IMAGE SEARCH MADE EASY!



Free access to nearly 3 million rights-cleared images and clip art! Use **ImageQuest** for your projects, presentations and much more!

Search **ImageQuest**  
on [lynn.edu/library](http://lynn.edu/library)  
Click on  
**DATABASES**  
Then search for  
**Image Quest**

# Events and Programs

All library sponsored events are free and open to invited guests, students, and faculty/staff at Lynn University. For most events, we do ask that you RSVP. If you have any questions or comments, please call Sabine Dantus at ext. 7708.

SEARCH



**Escape the Library.**

You and your team will have 45 minutes to solve a series of riddles, decipher clues, and find the key to escape a locked room in the Lynn Library! **Do you have the critical thinking and teamwork skills needed to win and escape Lynn Library?**

**SIGN UP TODAY!**

The graphic features a dark blue background with a green padlock, a magnifying glass over a fingerprint, and a white chain link.

## Escape Room @ Lynn Library Now through November 18th

You and your team will have 45 minutes to solve a series of riddles, decipher clues, and find the key to escape The Cube in the Lynn Library!

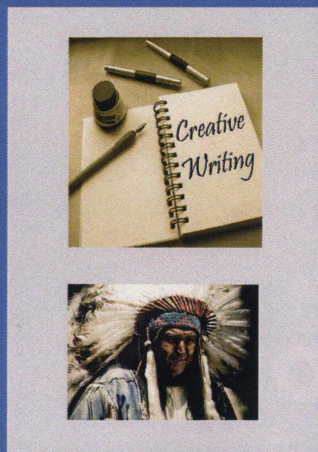
Do you have the critical thinking and teamwork skills needed to win and escape Lynn Library? Sign up at the Lynn Information Desk in teams of 2-4! Prizes will be given for the team with the fastest time.

## LIBRARY MONTHLY

Call 561-237-7254  
E-mail [library@lynn.edu](mailto:library@lynn.edu)  
Text 561-299-3043  
Visit [lynn.edu/library](http://lynn.edu/library)

Blog:  
[lynnlibrary1.wordpress.com](http://lynnlibrary1.wordpress.com)

Follow us on  
    
LynnULibrary



NOVEMBER 2015

U.S. Presidential Election:  
Tuesday, November 8th

National Novel Writing  
Month

Native American Heritage  
Month

UPCOMING EVENTS

Library Where You Live  
Library Where You Are  
Finals Programming