

Lynn University presents

# **SALUTE TO BROADWAY**

**Featuring the Lynn Philharmonia Orchestra**

Jon Robertson, guest conductor  
and special guests,  
soprano Mary D'Arcy and baritone Brian Ricci

**Saturday, April 24, 2010**  
**7:30 p.m.**

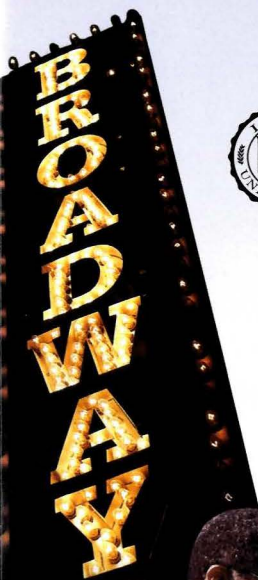
**Count de Hoernle Amphitheater**  
**at Mizner Park**



**LYNN**  
UNIVERSITY

CONSERVATORY  
OF MUSIC

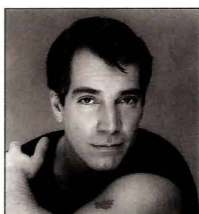
*When talent meets inspiration,  
the results are extraordinary.*





### **Mary D'Arcy, soprano**

Mary D'Arcy has starred in Broadway productions of *The Phantom of the Opera*, *Singin' in the Rain*, *Sunday in the Park with George*, and the Playwright's Horizon Workshop of *Into the Woods*, written by Stephen Sondheim and James Lapine. She has toured in productions of *Camelot* and Duke Ellington's *Sophisticated Ladies*, and can be seen opposite James Woods and Drew Barrymore in Steven King's cult classic film, *Cat's Eye*. She premiered the vocal rendition of "Goodbye for Now" (the theme from the movie, *Reds*) and "Take Me to the World" (from *Evening Primrose*). Each holiday season for the past 10 years, D'Arcy has volunteered and performed with the charitable organization, Holiday Express.



### **Brian Ricci, baritone**

Brian Ricci, a native New Yorker, moved to South Florida eight years ago. He studied at The New England Conservatory and at the 29th Street Repertory Theatre School in New York City. He's sung in the chorus of the Boston Lyric Opera Company, and held theatre roles in *Oklahoma*, *Brigadoon* and *Fiddler on the Roof*, among others. In 1996, he made his New York City debut at Carnegie Hall and he has performed roles in numerous oratorios with orchestras including the Florida Philharmonic.



### **Jon Robertson, guest conductor**

Maestro Jon Robertson, dean of the Lynn University Conservatory of Music, enjoys a distinguished career as a pianist, conductor and academician. A graduate of The Juilliard School of Music, he studied piano performance under Beveridge Webster, choral conducting with Abraham Kaplan at Juilliard, and orchestral conducting with Herbert Blomstedt formerly of the Gewandhaus Orchestra (Germany). He continues to guest conduct and perform in concert as a member of the Cole-Robertson Trio.



### **Lynn Philharmonia Orchestra**

The Lynn University Philharmonia Orchestra sets the standard for conservatory-level symphonic training. Now in its 18th season as a full symphony, the Philharmonia is an integral part of the education of the conservatory's graduate and undergraduate music students. It presents an annual series of high-quality concerts with a wide range of repertoire. Albert-George Schram serves as the Philharmonia's music director and conductor.



# Musical Program

## Philharmonia Orchestra

*My Fair Lady*: Symphonic Portrait

Frederick Loewe and Alan Jay Lerner  
arr. by Bennett

## Mary D'Arcy, soprano

*Singin' in the Rain*: Medley

Nacio Herb Brown and Arthur Freed  
arr. by Jurman and orch. by Zito

"Tonight" from *West Side Story*

Leonard Bernstein

*Phantom of the Opera*: Christine Medley

Andrew Lloyd Webber  
orch. by Troob

## Philharmonia Orchestra

*On the Town*: Three Dance Episodes

The Great Lover

Times Square 1944

Leonard Bernstein

## Brian Ricci, baritone

"Maria" from *West Side Story*

Leonard Bernstein

"Bring Him Home" from *Les Misérables*

Claude-Michel Schönberg  
Alain Boublil and Herbert Kretzmer  
arr. by Krogstad

"How to Handle a Woman" from *Camelot*

Frederick Loewe and Alan Jay Lerner

## Mary D'Arcy, soprano

## Brian Ricci, baritone

"If I Loved You" from *Carousel*

Richard Rodgers and Oscar Hammerstein II

"People Will Say We Are in Love"  
from *Oklahoma*

Richard Rodgers and Oscar Hammerstein II  
orch. by Bennett

## Philharmonia Orchestra

*The Sound of Music*: Selections for Orchestra

Richard Rodgers & Oscar Hammerstein II  
arr. by Bennett

## Brian Ricci, baritone

"You Raise Me Up"

Brendan Graham and Rolf Løvland  
arr. by Krogstad

## Mary D'Arcy, soprano

## Brian Ricci, baritone

"The Prayer"

Foster/Sager/Testa/Renis

# Benefit Concerts at Lynn University April 30, May 1

## DASHBOARD CONFESSIONAL

ALTER THE ENDING

AND FRIENDS



### The Journey of Hope continues ... with 3 concerts to benefit the Lynn University Memorial Scholarship Fund

#### SATURDAY, MAY 1, 7 P.M.

Stake out your spot on  
the lawn and rock out  
under the stars to  
Dashboard Confessional

**\$20**

Lynn University  
campus intramural field

Tickets: \$20/person  
Lynn students free with  
current ID

**\$75**

#### FRIDAY, APRIL 30, 8 P.M.

Dashboard Confessional  
with the Lynn University  
Philharmonia Orchestra

Keith C. and Elaine Johnson Wold  
Performing Arts Center on the  
Lynn campus

Tickets: \$75/person

#### FRIDAY, APRIL 30, 6-7:30 P.M.

Exclusive VIP unplugged performance with Chris Carrabba

**\$300**

Keith C. and Elaine Johnson Wold Performing Arts Center's  
intimate Schmidt Studio

Tickets: \$300/person (includes drinks, hors d'oeuvres and free ticket to 8 p.m. concert)

[www.lynn.edu/benefitconcert](http://www.lynn.edu/benefitconcert)  
Box office: 561-237-9000

[Dashboardconfessional.com](http://Dashboardconfessional.com)

Proceeds from all three concerts benefit the Lynn University Memorial Scholarship Fund in honor of the Lynn University faculty members and students who died in an earthquake while providing service and care to the people of Haiti during the Journey of Hope course in January 2010.



**LYNN**  
UNIVERSITY

3601 N. Military Trail, Boca Raton FL 33431