

---

## Erratum

---

### Sliding wear behavior of submicron-grained alumina in biological environment

R. Singha Roy,<sup>1</sup> A. Mondal,<sup>2</sup> A. Chanda,<sup>2</sup> D. Basu,<sup>1</sup> M. K. Mitra<sup>3</sup>

<sup>1</sup>Central Glass & Ceramic Research Institute, Bioceramics & Coating Division, Kolkata 700 032, India

<sup>2</sup>Jadavpur University, Department of Mechanical Engineering, Kolkata 700 032, India

<sup>3</sup>Jadavpur University, Department of Metallurgical Engineering, Kolkata 700 032, India

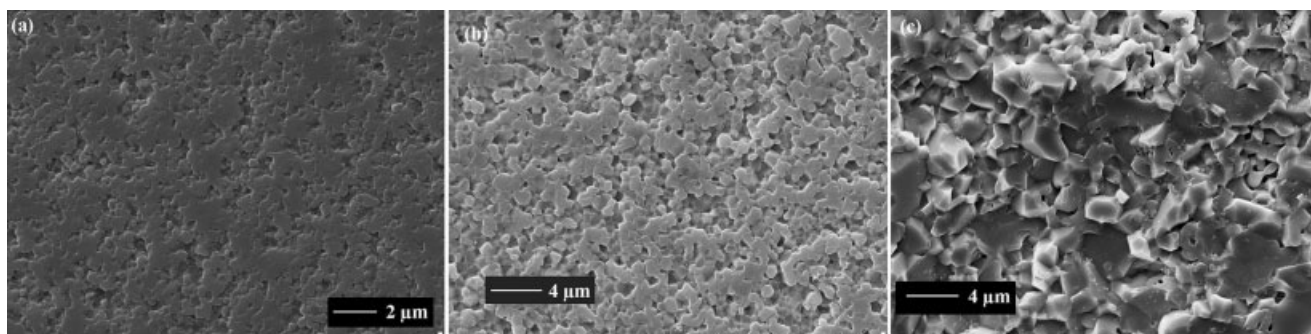
Received 10 March 2006; revised 19 June 2006; accepted 13 November 2006

Published online 16 March 2007 in Wiley InterScience (www.interscience.wiley.com). DOI: 10.1002/jbm.a.31230

Erratum published online 9 October 2007 in Wiley InterScience (www.interscience.wiley.com).

DOI: 10.1002/jbm.a.31629

The authors have brought to our attention an error occurred when submitting Figure 4c panel for the article listed above, published in *J Biomed Mater Res* 2007; 83A: 257–262. A revised Figure 4 (a-c) appears below. We regret any confusion caused by this error.



**Figure 4.** SEM topography of the worn out alumina test samples showing the extent of maximum grain pull out for (a)  $G = 0.45 \mu\text{m}$ , (b)  $G = 0.95 \mu\text{m}$ , (c)  $G = 4 \mu\text{m}$ .

