

4-1-1992

Ex. 277-US-453

Ron Lefler
Oregon Department of Fish and Wildlife

David Lowe
Oregon Department of Fish and Wildlife

Follow this and additional works at: <https://digitalcommons.law.uidaho.edu/all>

Recommended Citation

Lefler, Ron and Lowe, David, "Ex. 277-US-453" (1992). *Hedden-Nicely Collection, All*. 375.
<https://digitalcommons.law.uidaho.edu/all/375>

This Expert Report is brought to you for free and open access by the Hedden-Nicely at Digital Commons @ UIdaho Law. It has been accepted for inclusion in Hedden-Nicely Collection, All by an authorized administrator of Digital Commons @ UIdaho Law. For more information, please contact annablaine@uidaho.edu.

ODFW AQUATIC INVENTORY PROJECT

STREAM REPORT

STREAM: Jackson Creek

BASIN: Klamath

DATES: November 12-18, 1991

CREW: Ron Lefler / David Lowe

STREAM ORDER: _____ BASIN AREA: _____ NUMBER OF TRIBUTARIES: _____

USGS MAPS:

GENERAL DESCRIPTION: The survey of Jackson Creek started at the boundary of USFS land at Road #49, and progressed 5,224 meters. The end of the survey was marked with orange flagging approximately 800 meters above a tributary/spring. The survey did not continue into upper reaches due to constraints of winter weather and access. Stream habitat was dominated by cascades (39%), riffles (27%), and rapids (23%). Stream substrate was dominated by gravel (34%), sand (29%), and silt and organics (26%). The dominant land use was mature timber. A large amount of woody material was in the channel; wood volumes ranged between 5 and 35 m³/100m.

REACH DESCRIPTIONS:

Reach 1: (T30S-R11E-SW7) Length 1,018 meters. This reach starts at the junction with USFS road #42, and a USFS land boundary. A depth gauge and a crossing fence line was observed near the end of this reach. The reach was unconstrained and bordered by multiple terraces within a broad valley floor. The valley width index was well over 20 (VWI is the ratio of the active channel width to the width of the valley floor). The average unit gradient was 1.5 percent. Stream habitat was dominated by riffles (63%), and scour pools (21%). Stream substrate was dominated by gravel (36%), sand (34%), and silt and organics (23%).

Reach 2: (T30S-R11E-NW8) Length 1,405 meters. This reach starts at the head of an anastomized channel that does not rejoin the stream, but flows into the floodplain of the Williamson River. A depth gauge was observed near the start of this reach. The stream was unconstrained within a broad valley floor that had a VWI of 17. The average unit gradient was 2.7. Stream habitat was dominated by riffles

(40%), and rapids (38%); substrate was dominated by gravel (32%), sand (32%), and silt and organics (27%).

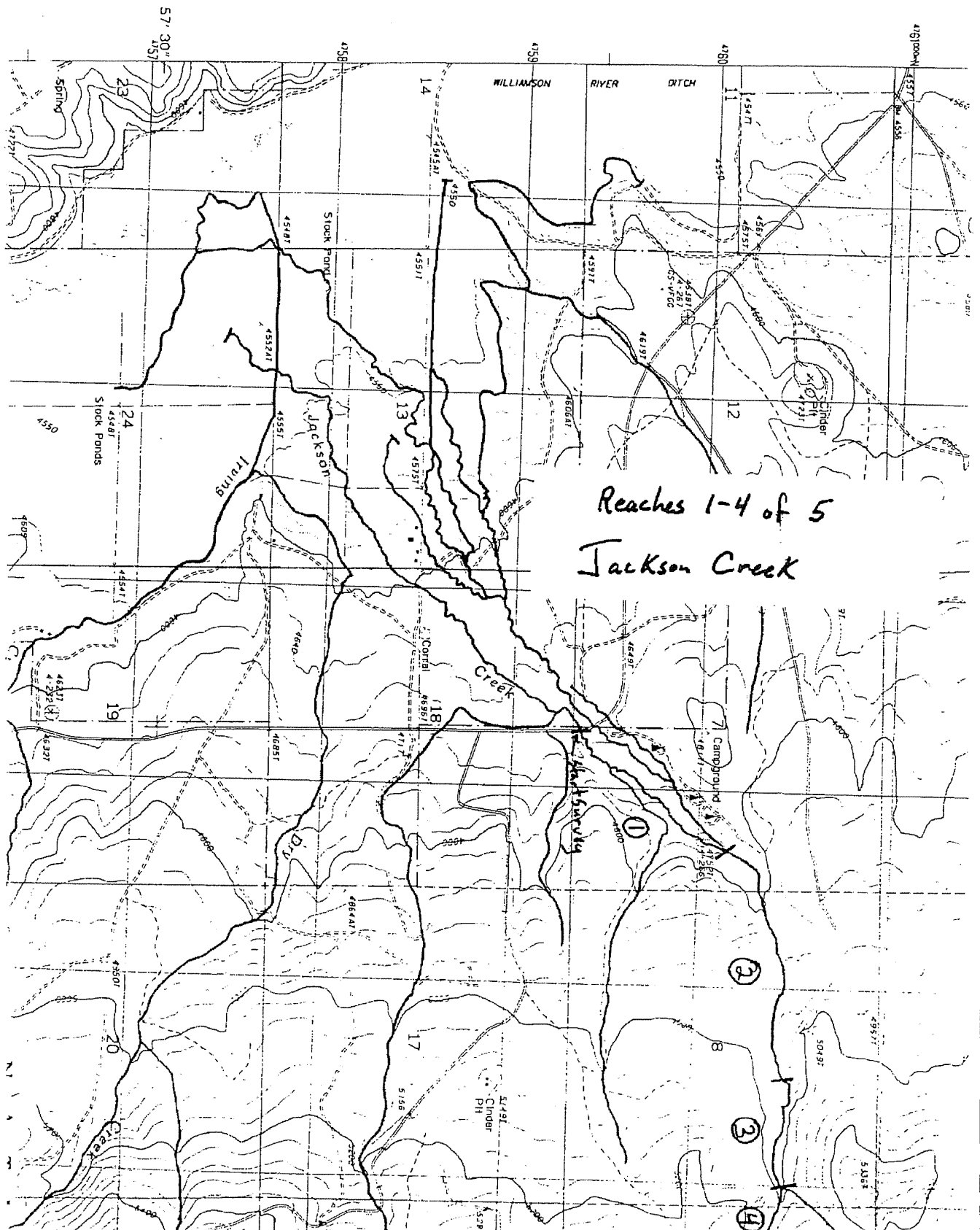
Reach 3: (T30S-R11E-NE8) Length 501 meters. This reach was constrained by steep v-shaped hillslopes. It had a VWI of 1.5, and an average unit gradient of 3.3. Stream habitat was dominated by rapids (44%), riffles (25%), and cascades (20%). Stream substrate was dominated by gravel (34%), sand (29%), and silt and organics (25%).

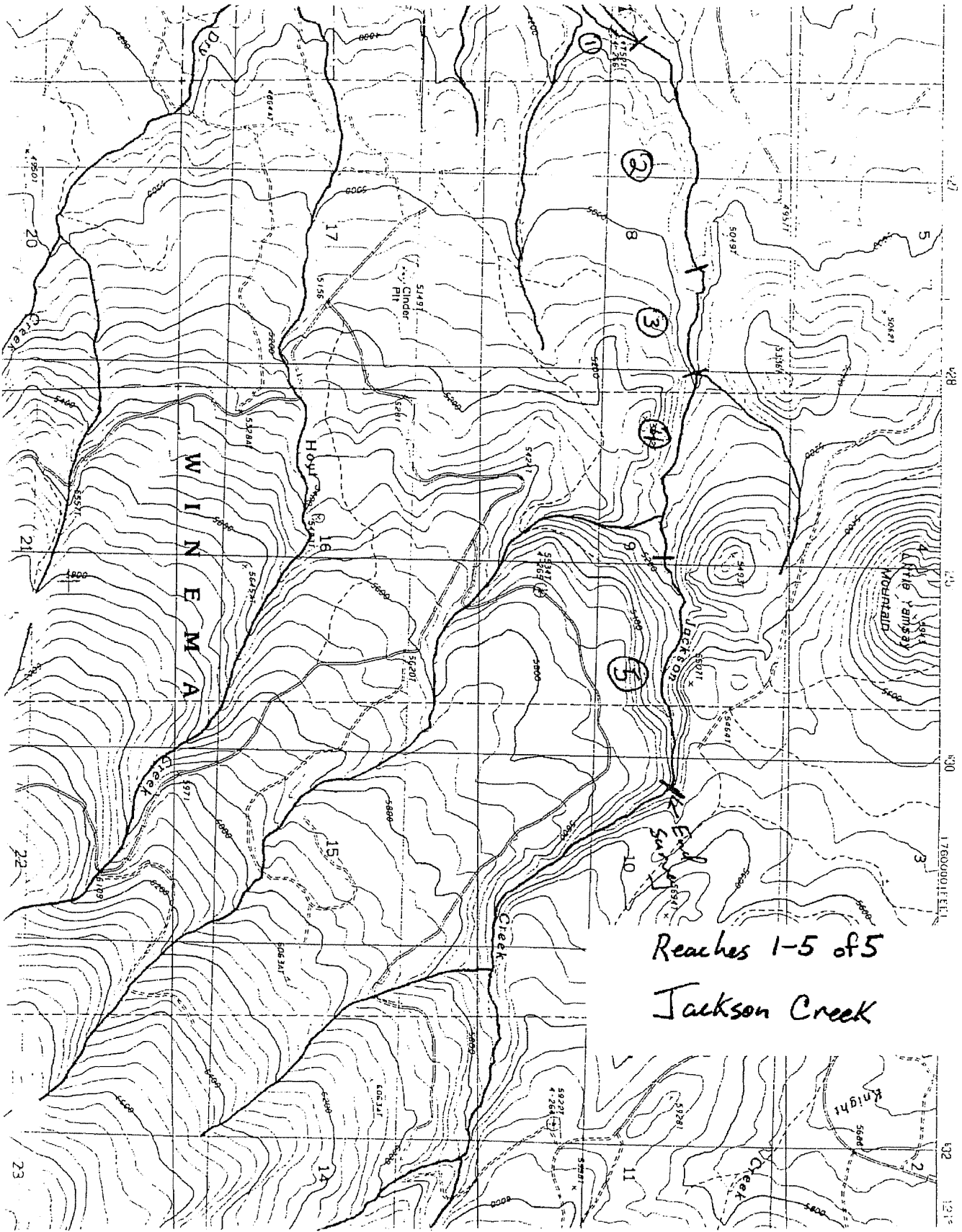
Reach 4: (T30S-R11E-NE8) Length 1,074 meters. This reach was unconstrained, and opened into a broad valley floor with a VWI of 5. The average unit gradient was 4.8%. Stream habitat was dominated by cascades (66%), and rapids (22%). Stream substrate was dominated by gravel (38%), silt and organics (26%), and sand (22%).

Reach 5: (T30S-11E-NE9) Length 1,226 meters. This reach was constrained by steep v-shaped hillslopes, and had a VWI of 1.5. A small tributary/spring enters the channel in the lower third of the reach. The average unit gradient was 6.3 percent. Stream habitat was dominated by cascades (82%). Stream substrate was dominated by gravel (33%), silt and organics (28%), and sand (20%).

CONCERNS/RECOMMENDATIONS:

COMMENTS:





Reaches 1-5 of 5
Jackson Creek

REACH 1

30S-11E-7SW

REACH 1

HABITAT DETAIL

Habitat Type	Number Units	Total Length (m)	Avg Width (m)	Avg Depth (m)	Total Area (m ²)	Large Boulders (>0.5m)	Substrate Percent Wetted Area					
							S/O	Snd	Grvl	Chbl	Bldr	Bdrk
GLIDE	4	38	2.3	0.2	88	0	31	30	38	1	0	0
POOL-DAMMED	8	56	2.6	0.4	149	12	31	34	33	0	3	0
POOL-LATERAL SCOUR	25	188	2.4	0.3	438	20	32	34	31	2	1	0
POOL-PLUNGE	8	25	2.7	0.4	67	6	39	33	23	3	4	0
RAPID/BOULDERS	6	62	2.4	0.2	151	65	15	35	33	5	13	0
RIFFLE	22	234	2.1	0.1	468	25	13	36	46	4	1	0
RIFFLE W/ POCKETS	21	473	2.2	0.2	1,064	86	15	35	39	8	3	0
Total:	94	1,077	2.3	0.2	2,425	214	Avg:23	34	36	4	3	0

HABITAT SUMMARY

Habitat Group	No. Units	Total Length (m)	Avg Width (m)	Avg Depth (m)	Wetted Area		Large Boulders		Wood Class
					(m ²)	Percent	Number	#/100m ²	
Dammed & EW Pools	8	56	2.6	0.4	149	6.15	12	8.05	1.4
Scour Pools	33	213	2.5	0.3	505	20.81	26	5.15	2.3
Glides	4	38	2.3	0.2	88	3.64	0	0.00	1.3
Riffles	43	708	2.1	0.2	1533	63.19	111	7.24	2.1
Rapids	6	62	2.4	0.2	151	6.21	65	43.13	3.2
Cascades	0	0	.	.	0	0.00	0	0.00	.
Step/Falls	0	0	.	.	0	0.00	0	0.00	.