

# **Music of discipline and reform - the bands of children's orphanages, industrial schools and asylums**

*Gavin Holman – July 2019*

From the early 17<sup>th</sup> century through to WW2, at least, large numbers of institutions were established to provide for various segments of society which did not fit into “normal” life. These included orphans, the sick, criminals the destitute, paupers, and those, that today, we would refer to as physically and mentally handicapped.

Through various local and national initiatives and laws the workhouses, poor law unions, asylums and prisons were established to house and, hopefully, reform or rehabilitate their inmates.

Workhouses, prisons, lunatic asylums, orphanages, and “industrial schools” were just some of these institutions. Some were operated by the state, others by local organisations established by or sanctioned by the state in some cases. Charitable, philanthropic and religious organisations also set up home for orphans and the poor. They were variously funded by local taxes, parent organisations (e.g. the Church), rich sponsors, grants and their own fund raising.

Some elements of treatment and/or education were undertaken to prepare the inmates for their eventual release either back into society or, in the case of children, to make their own way in the adult world.

Brass and other bands were often set up to help educate the children (mainly boys it has to be said), to provide another aspect of discipline, recreation and also, potentially, to give access to a musical career once they left the school. A useful by product at times were fees collected by performances of the bands, which helped the homes' finances. Other such institutions which had bands included Training Ships, Industrial Homes, Ragged Schools and Reformatory Schools. These catered for "delinquents" as well as orphans.

Similarly, bands were established in some of the adult institutions, to help with discipline, provide entertainment and raise some funds for the institution.

Bandmasters held salaried appointments at the institutions, often responsible for other duties as well as the musical tuition and training. These duties could include teaching (appropriate subjects for the children in “care”), fund raising, maintenance of the buildings and more. On occasions the institution engaged an external musical tutor, instead of a full time in-house bandmaster, usually one with a connection to other bands in the locality.

Details of known institutional bands are given below.

## Further information & bibliography

- **Children's Homes**  
<http://www.childrenshomes.org.uk>
- **Former Children's Homes**  
<http://www.formerchildrenshomes.org.uk>
- **Industrial and Reformatory Schools**  
<http://www.missing-ancestors.com>
- **Workhouses**  
<http://www.workhouses.org.uk>
- **Rossbret UK Institutions** (archive version only available)  
<http://archive.is/kBuen>

## Bibliography

- Anon - Qu'Appelle Industrial School Brass Band - *Canadian Winds*- Vol. 10 (1), pp. 25-26
- Anon - The Jenkins Orphanage Band - *Bibliolore - the RLIM blog*- 13 March 2014 - [<https://bibliolore.org/2014/03/13/the-jenkins-orphanage-band/>]
- Anon - The Jenkins Orphanage Bands, in: *Black Europe*- Bear Family Productions, Hambergen, 2013
- Chilton, John - *A Jazz Nursery: The Story of the Jenkins' Orphanage Bands*- Bloomsbury, 1980. ISBN: 095012902x
- D.M.W. - The United States Industrial School Band, Carlisle, Pennsylvania - *The Red Man*- [Carlisle Industrial School], Vol. XIII, no. 7, February 1896, pp. 6-
- Gear, Gillian Carol - *Industrial Schools in England 1857-1933 - Moral Hospitals or Oppressive Institutions?*- PhD thesis, University of London, 1999
- Handel, Greg & Humphreys, Jere - The Phoenix Indian School Band, 1894-1930 - *Journal of Historical Research in Music Education*- Vol. 26, No. 2 (Apr., 2005), pp. 144-161
- Hash, Phillip M. - Music at the Illinois Asylum for Feeble-Minded Children: 1865-1920 - *Journal of Historical Research in Music Education*- vol. 32, (1), 2010, pp. 37-56
- Hash, Phillip M. - Music Education at the New York Institution for the Blind, 1832-1863 - *Journal of Research in Music Education*- vol. 62 (4), January 2015, pp. 362-388
- Hash, Phillip M. - The Chicago Reform School Band: 1862-1872 - *Journal of Research in Music Education*- October 2007, vol. 55 no. 3, pp. 252-267
- Hash, Phillip M. - The Glenwood Manual Training School Band: 1892-1929 - *Journal of Band Research*- Vol. 47 (2), 2012, pp. 64-81
- Hash, Phillip M. - The Illinois Soldiers' Orphans' Home Band: 1898-1934 - *Missouri Journal of Research in Music Education*- Issue 51, 2014, pp. 27-42
- Hash, Phillip M. - William E. Watt and the Graham School Band of Chicago, Illinois: 1895-1911 - *Journal of Historical Research in Music Education*- vol. 34, (1), 2012, pp. 45-61
- Higginbotham, Peter - *Children's Homes: a history of institutional care for Britain's young*- Pen & Sword Books, 2017. ISBN: 978-1526701350

- Parker, Roy - Boys' bands in children's homes: a fragment of history - *Journal of Children's Services*, Vol. 11 (1), 2016, pp. 73-84
- Parkhurst, Melissa D. - *To Win the Indian Heart: Music at Chemawa Indian School*- Oregon State University Press, 2014. ISBN: 0870717383
- Rockwell, Anne F. - *Hey, Charleston!: The True Story of the Jenkins Orphanage Band*- Carolrhoda Books, 2013. ISBN: 0761355650
- Shansky, Carol Lynn - *The Hebrew Orphan Asylum Band of New York City, 1874-1941: Community, Culture and Opportunity*- Cambridge Scholars Publishing, 2016. ISBN: 1-4438-9033-2
- Sheldon, Deborah A. - The Illinois School for the Deaf Band: A Historical Perspective - *Journal of Research in Music Education*- Winter 1997 vol. 45 no. 4, pp. 580-600
- Sheldon, Nicola - The musical careers of the poor: the role of music as a vocational training for boys in British care institutions 1870-1918 - *Journal of the History of Education Society*- Volume 38, 2009, Issue 6, pp. 747-759

## Bands in the British Isles

### **Abbot Memorial School Brass Band** (Gateshead, Durham)

Active in 1885 through to WW1. Conductor in 1894 was Robert Smith, Mr Thompson in 1901. In 1886 band took part in the "Monstre Children's Trip to South Shields" Still active in 1901 when the conductor was Mr Thompson. The members numbered 40 players in 1896. The Abbot Memorial Ragged School was founded in 1867 by Mrs Catherine Abbot, in memory of her husband, John George Abbot, and father-in-law, John Abbot, proprietors of the Park Iron and Brass Works. It was sited next to Camilla Street, and it closed in 1929

### **Aberdare Industrial School Brass Band** (Glamorgan)

Founded in summer 1884, however it may not have lasted long. The school, which was largely farm-based, had 145 pupils in 1881, but had dwindled to 80 by 1887 at which time questions were being raised about its management and viability. The band was active once again in the early 1900s.

### **Aberdeen Blind Asylum Brass Band** (Aberdeenshire)

Active in 1867, conductor Mr Coombs. Still active in 1900. Conductor Mr Christie in 1872. All the players were employees of the asylum.

### **Acton Lane British School Brass Band** (Yate, Gloucestershire)

Active in 1884 to 1887. Conductor Mr Rogers in 1885

### **Akbar Nautical School Band** (Cheshire)

The Akbar Nautical School for Boys was opened in 1909 at Heswall, on the Wirral. It replaced the Reformatory Ship Akbar which had been scrapped in November 1907 - which had its own band. The band was active in the 1910s and 1920s.

### **Alderson's Adult School Brass Band** (Stockton-on-Tees, Durham)

Active in 1884 and 1890

### **Anerley Schools Brass Band** (Upper Norwood, Surrey)

Active from 1863. Still active in 1910. Conductor J. Lawson in 1882. This was based at the North Surrey Industrial School for pauper boys, Anerley Road, Upper Norwood

### **Ardwick Green Industrial School Brass Band** (Manchester, Lancashire)

Active from the early 1860s through to WW1. Conductor J. Baxter in 1882, George Taylor in 1901 and 1914. Still active in 1916. Played in various parks in Salford in 1910 and 1911. The Manchester Certified (Ragged) Industrial School, Ardwick Green, was founded (certified) in 1857 and closed in 1922. Also known as Manchester Ragged School Brass Band

### **Artane Industrial Schools Brass Band** (Dublin)

Active in 1873 to 1904. Conductor Harry Lowe in 1882, Peter O'Ryan in 1893. In 1886 the Artane Boys Band began their association with the GAA (Gaelic Athletic Association) who jointly ran the current Artane School of Music with the Christian Brothers (the original founders of the school). Visited Aberdeen in 1888 as part of the Irish Exhibition. Continued on and off until the school closed in 1969. The boys in the band had been tutoring local boys from the community for over a year and this formed the basis of a new Community Band in Artane, which still exists

**Ashford Industrial School Brass Band (Kent)**

Active from 1889 to 1910. The band of the Kent County Council Industrial School for Boys



**Ashford Industrial School Brass Band (Middlesex)**

Active in 1876 to 1889. Conductor Major Woodhouse (late 1st Lifeguards) in 1877-1882, W.H. Ackerman in 1889. Band of the West London District Schools

**Attercliffe Reform Brass Band (Yorkshire - West Riding))**

Active in 1892

**Ayr Industrial School Brass Band (Ayrshire)**

Founded in 1889, conductor Mr Sims. Still active in 1903

**Bacup Schools Band (Lancashire)**

Active in the early 1900s

**Baldovan Industrial Schools Brass Band (Downfield, Angus)**

Active from 1879 to the 1930s. Conductor Mr Warren in 1881, Mr Wallace in 1889

**Ballymena Union Workhouse Band (County Antrim)**

Active from 1867 to 1879

**Ballymena Workhouse Brass Band (County Antrim)**

Formed in January 1865, conductor Mr Ballard. Conductor Mr Dornan in 1867. The band was re-organised in 1880

**Balmoral Industrial School Brass Band (Belfast, County Antrim)**

Active in 1899. Still active in 1904. Conductor Philip A. Bell in 1900-1902, James Bell in 1903. A concert in August 1903 was: Crusader (Sousa), Alpha (W. Williams), True Hearts (George Webb), Pirates of Penzance (Sullivan), My Lu (Phelps), Jollity (Lynton), Immortellen (Gung'l), Irish Airs (Hartman), In Ye Olden Times (Hume), Land o' Burns (Hume), Independentin (Hall)

**Baltimore Piscatorial School Brass Band (Cork)**

Active in 1888 to 1898. Conductor Nicholas Punch in 1889, T. Farrell in 1897. The school was a reformatory for orphans and young offenders, and was founded in 1887 to provide education for boys in all aspects of fisheries, from boat building, to catching, to curing. The band's uniform was a copy of the royal navy's ratings uniform and the instruments bore the logo of the former fisheries school. They were known as 'blue legs'. The 36-piece band went to locations all over West Cork playing concerts and raising funds.

**Bamford Independent School Brass Band (Lancashire)**

Active in the 1880s, conductor B.T. Cartledge.

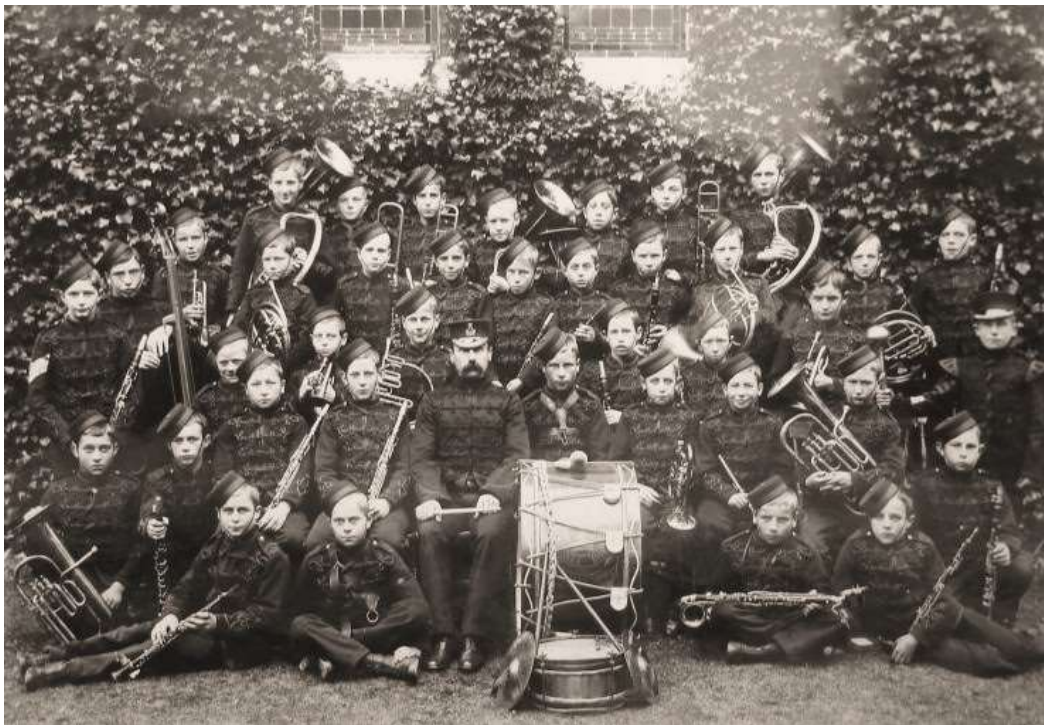
**Banbury Adult School Brass Band (Oxfordshire)**

Active in 1904

**Band of the Royal Eastern Counties Asylum (Essex)**

Took part in the Colchester Carnival in 1934/36/37, conducted by A Wright

**Banstead Cottage Home Boys Band (Surrey)**



Active in 1895 through into the early 1900s. The Cottage Homes were erected in 1878-80 to a design by A and C Harston, for the Kensington and Chelsea School District, in Fir Tree Road, Nork, Banstead, and were described as giving the impression of "a well-designed model village, delightfully placed amid country surroundings of woodland and downs." The buildings occupied a narrow strip of land alongside a railway line, although the elevated position of the site was said to provide views of Windsor Castle. An account of the buildings from 1898 states: "The entrance gates and porter's lodge are 50 yards from the middle of a fine main drive (about 600 yards in length), on either side of which are ranged the 23 detached homes or cottages for the children. In the centre of this drive lie the

administrative and school buildings, consisting of the residence of the superintendent and matron, a house for the school staff, the stores or "village shop," the bakery, laundry, and swimming bath; three schools, two on the north side for boys and girls (a new girls' school has just been added with a covered playground for boys and girls beneath it), and the other on the south side for infants, and the detached chapel. Immediately at the right of the entrance, are two probationary homes, one for girls and one for boys, together capable of holding 40 children, while further to the right, on either side of the drive, are the nine cottages for boys, with accommodation for 40 in each. To the extreme right, a fine bandroom, which is to form part of a future drillroom and gymnasium, has been lately erected at the cost of some £800. On the left of the entrance and central buildings, the 14 girls' and infants' cottages are ranged, with 26 beds in each ; again to the left of these, come the infirmary with 30 beds, and the infectious block with 18 beds; and beyond these blocks lie the present boys' playfield and a large kitchen garden....". Also known as Kensington and Chelsea Schools Brass Band. A successor band was active in the 1940s

**Barnes Home Industrial School Band** (Heaton, Lancashire)

Active from 1877 to 1911 when it played in various parks in Salford. It travelled to Buxton in June 1879 to perform at the Well Dressing there. The school was erected, in Didsbury Road, Heaton, by the late Robert Barnes Esq., in 1871 for the education and training of neglected and destitute children under the provisions of the industrial schools act of 1866. Conductor F.T. Bateman in 1908

**Barnet Roman Catholic School Brass Band** (Hertfordshire)

Active in 1877. Still active in 1887. Associated with St Andrew's Catholic School, Union Street, Barnet

**Barr's Court Proprietary School Brass Band** (Hereford, Herefordshire)

Active in 1858

**Barton-on-Humber Adult School Band** (Lincolnshire)

Founded in 1911, bandmaster George White.

**Basford Union Workhouse Brass Band** (Nottinghamshire)

Founded in 1894. Still active in 1895

**Bath Workhouse Brass Band** (Somerset)

Founded in 1875, instruments costing £42. A juvenile band of the workhouse boys. Still active in 1889

**Bedfordshire Reformatory Band** (Carlton, Bedfordshire)

Founded in early 1903. First public engagement at Turvey on 2 June 1903, with 18 boys. Still active in 1905. Turvey's Reformatory was founded by T.C. Higgins of Turvey House in 1857 for 'the Industrial training of Juvenile Offenders'. It was based at School Lane, Carlton. A bandmaster and drill instructor, Frederick Lincoln (also known as Frank C. Lincoln), was appointed on 1st January 1903, conductor Mr Sharp in 1905. Also known as Carlton Reformatory Brass Band

**Belfast Asylum Brass Band** (County Antrim)

Active in 1865. Still active in 1898. Based at the Belfast District Lunatic Asylum

**Belfast Industrial School Brass Band** (County Antrim)

Active in 1879. Conductor Mr Ballard in 1890, Mr Bell in 1901, Mr May in 1904

**Belfast Reformatory Band** (County Antrim)

Active in the 1900s, conductor Mr Chant

**Bersted Home for Boys Brass Band** (North Bersted, Sussex)

Active in the early 1900s. The home was established in around 1890 at Sheepwash Lane (now Hawthorn Road), South Bersted, on the outskirts of Bognor Regis. It could accommodate 40 boys, aged from 8 to 14. From the outset, the home had received boys paid for by the Waifs and Strays Society and was taken over by the Society in 1892. The band gave performances at local events.

**Bethany Home Brass Band** (Kinver, Staffordshire)

Pastor Ernest Hexall founded the Midland Counties Crippled Children's Guild in 1906, and he arranged with Mr Martindale of Kinver for groups of four or five children at a time to stay in his house, for which he paid 6/- per week per child. Demand was such that the Guild leased Hyde House, renaming it Bethany. One of its main claims was that it had the only crippled children's brass band in the world, and George Kimberley came to help out with teaching the children how to play. The band travelled around in the home's bus giving concerts in the neighbouring towns. Pastor Hexall died in 1915, falling off the home's bus, and the home was then run by Richard Davies. Sadly, after a case of neglect in 1919, the home (and band) closed.

**Bethnal Green Industrial School Band** (Middlesex)

Active from 1872 through 1885

**Birkdale Farm School Brass Band** (Lancashire)

In 1871, the Liverpool Catholic Reformatory Association opened a Reformatory School for Roman Catholic Boys on Liverpool Road, Birkdale, near Southport. The band was active by 1884 and still active in 1909.

**Birkenhead Industrial School Brass Band** (Cheshire)

Active in 1868. Conductor Mr Bielby in 1869. Still active in 1918. Based at the Albert Memorial Industrial Schools

**Birmingham Board Schools Scholars' Brass Band** (Warwickshire)

Active in 1887, conductor Mr Dobson

**Bishop Auckland Workhouse Juvenile Brass Band** (Durham)

Active in 1866, conductor George Elgey. Still active in 1867

**Bishop Brown Memorial School Brass Band** (Stockport, Cheshire)

Founded in 1888. Still active in 1896. The Bishop Brown Memorial Industrial School for Roman Catholic Boys was established in 1885 memory of the Right Reverend James Brown, first Bishop of the Roman Catholic diocese of Shrewsbury.

**Bishop O'Reilly Memorial School Brass Band** (Preston, Lancashire)

Active in the late 1890s and early 1900s. The St Vincent's Boys Brass Band was a distinct success and particular pride of the Home. Boys reaching the age of 14 years were ready for work, and those taught to play a brass instrument in the band and who showed a natural capacity for music, were eligible for enlistment into Regimental Bands of the Army or Royal Navy. The Bishop O'Reilly Memorial School was founded in 1896 and was also known as the Liverpool Diocesan Poor Law School, or more commonly St Vincent's School. The School was run by the Daughters of Charity of St Vincent de Paul

**Bishop Ryder's Ragged School Band** (Birmingham, Warwickshire)

*See: Bishop Ryder's School Brass Band*



**Bishop Ryder's School Brass Band** (Birmingham, Warwickshire)

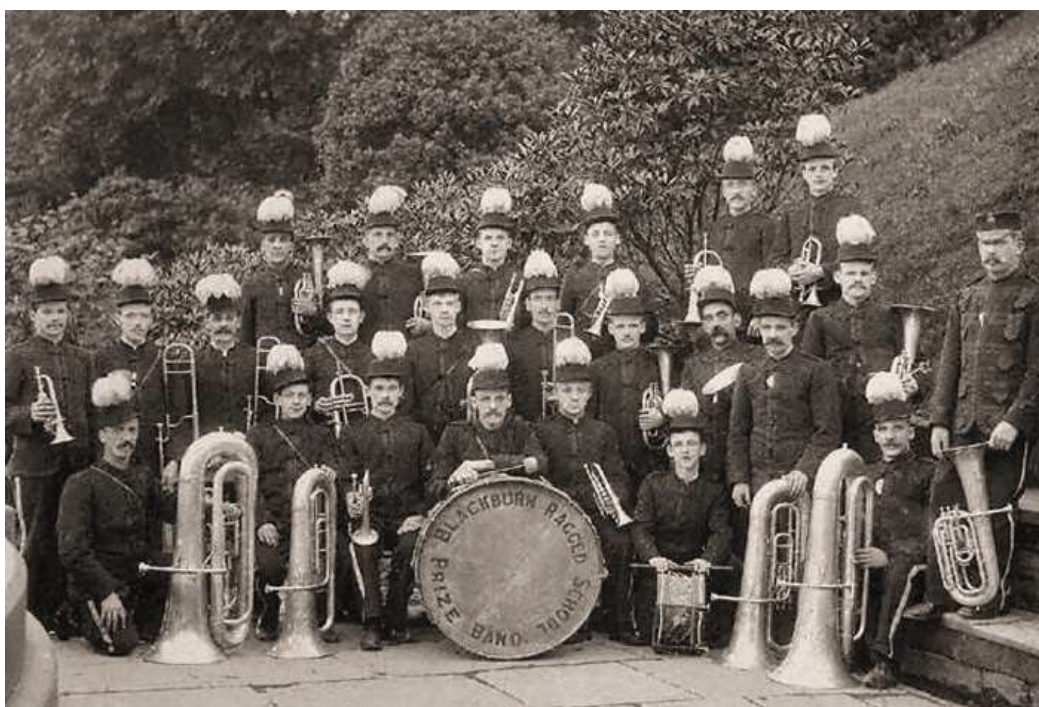
Active from 1864. Still active in 1901. St. Philip's Ragged School was opened in 1846, initially housed in a hired workshop at no. 19 Lichfield Street, Birmingham. The school provided training for boys and girls in mending and making clothes and shoes, as well as ordinary teaching. In 1850, the school was moved to a new building in Gem Street and renamed Birmingham Free Industrial School. Also known as Gem Street School Brass Band. It had links with the nearby Bishop Ryder Church. At this date, it provided accommodation in three departments: a day school for boys and girls over 7; industrial classes for boys and girls over 7; an asylum for orphans and deserted children. The school was placed under the Industrial School Act in 1868.

**Bisley Farm School Brass Band** (Surrey)

Active in 1869 to the 1940s (known as the Boys School Band). The Farm School was a refuge school set up in the 1860s by the National Refuges for Homeless and Destitute children. A Shaftesbury School was also set up there in 1873. Also known as Shaftesbury School Brass Band

**Blackburn Ragged School Brass Band** (Lancashire)

Formed in late 1887. Still active in 1904. The Blackburn Ragged School, Boys Home and Girls Refuge was established in 1881, in Bent Street, by John Thomas Walkden and James Dixon.



**Bodmin Street Reform Brass Band** (Sheffield, Yorkshire - West Riding))

Active in 1891, 1892

**Bolton Industrial School Brass Band** (Lancashire)

Founded in 1896. Still active in 1903

**Bonner Road Children's Home Brass Band** (Bethnal Green, Middlesex)

Active in 1879. Still active in 1897. Conductor R. Heath Mills in 1881-1882. The home was located in Bonner Road, London, and the band often played outside London to raise money and promote the institution - for example, a trip to Liverpool in March 1897. The home was run by Rev. Dr. Stephenson, and it had three other branches in Gravesend, Lancashire and Canada. By 1880 some 1,000 children had been received, with 470 still resident in 1881. Some 350 had been placed in service in England and a further 350 had been sent to Canada. Also known as Dr Stephenson's Home Brass Band

**Bordesley Green Early Morning School Band** (Warwickshire)

Founded in 1907, conductor Frank Starbuck.

**Boughton Industrial School Brass Band** (Cheshire)

Active in 1888, conductor J. Kelly

**Bournemouth Adult School Brass Band** (Hampshire)

Formed in 1907

**Boys' Refuge Industrial School Brass Band** (Whitechapel, Middlesex)

Active in 1872, with 20 boys, conductor Mr Rumsey. The school was located at 28 Commercial Street, Whitechapel, for boys between 7 and 15 who were "idle, houseless wanderers, and destitute means of instruction". The school closed in 1883

**Breadmore House School Brass Band** (Chiswick, Middlesex)

Active in 1867

**Brentford Industrial School Brass Band** (London)

Active in 1887. Bandmaster James Wellard in 1887, Mr Templeman in 1897. Still active in 1899

**Bridge Industrial School Band** (Wandsworth, Surrey)

Active in 1912

**Bridgend Lunatic Asylum Brass Band** (Glamorgan)

Active in 1876, bandmaster John Davies

**Bridgnorth Blue Coat School Brass Band** (Shropshire)

Active in 1857 to 1859

**Brighton Industrial School Brass Band** (Sussex)

Active in 1863. Still active in 1876

**Brighton Workhouse Brass Band** (Sussex)

Active in 1861, conductor Mr Curd. A band of 15 of the children of the workhouse.

**Bristol Blind Asylum Brass Band** (Gloucestershire)

Active in 1855, 1861

**Bristol Lunatic Asylum Brass Band** (Stapleton, Gloucestershire)

Active in 1871

**Bristol Training Ship Brass Band** (Gloucestershire)

Active in the 1890s

**Bristol Workhouse Schools Brass Band** (Gloucestershire)

Active in 1861 to 1882

**British Orphan Asylum Brass Band** (Slough, Buckinghamshire)

Founded in 1888

**Brookwood Asylum Brass Band** (Woking, Surrey)

Founded in 1867. Still active in 1877. At a concert in the asylum, in March 1877, which featured the "Wizard of Woking & West Surrey - with his Cabalistical Temple of Magic and Sorcery", the band played Cenerentola (Rossini), Rheinlieder (Rieaell), Sonnambula (Bellini), Scipion (Casey), Belle Mahone (Casey). [A file relating to the asylum brass band, including undated photograph and list of bandsmen, is held at the Surrey History Centre, Woking]

**Buckley Hall Orphanage Brass Band** (Rochdale, Lancashire)

Active in 1893. Still active in 1926. Conductor W.Warburton in 1901, A. Vandeput in 1914-1917. The orphanage opened in 1888 in Buckley Road, Wardleworth. There was also a drum and fife band, and a choir at the home.

**Burley Road Adult School Band** (Leeds, Yorkshire - West Riding))

Active in the early 1900s

**Burrage Grove Board School Brass Band** (Woolwich, Kent)

Active in 1878. Still active in the 1890s

**Caerleon Industrial Schools Brass Band** (Monmouthshire)

Active from 1874, conductor Mr Connor, through to the closure of the school in 1902. The school was open in Caerleon from 1859 to 1902, the musical reputation of the school in Caerleon and in Newport was high. In 1878 there were 24 boys in the regular band who could "play moderately difficult music at sight besides a number of learners coming in". the headmaster, Harding's salary was increased in 1885 on account of the extra tuition given by him in drill to the band. He was also given permission to hold a concert in support of the band funds. The services of the band were in much demand locally, in 1880 the Caerleon Cricket and Football Club requested the presence of the band at their annual sports. A similar request came in 1887 from the organizers of the Caerleon Flower Show, and in 1888 the band proudly accompanied the demonstration of the Sunday Schools Union in Newport on the Whitsun Monday. In June 1884 the Mayor of Newport, accompanied by Captain Thurston and Lieutenant Jones of the 3rd Welsh Regiment, heard the band. Their opinion was that "The boys' band is one of the best I have heard for a very long time and they are a credit to the Guardians". Conductor T. Harding in 1890. G.W.Harding was conductor in 1898 when the band consisted of 2 Eb soprano cornets, 6 Bb first cornets, 4 second cornets, 2 1st tenor saxhorns, 4 2nd tenor saxhorns, 2 1st baritones, 2 2nd baritones, 1 euphonium, 1 Bb bass, 1 bass trombone, 1 tenor trombone, 2 Eb bombardons, bass drum and side drum

**Caledonian School Brass Band** (Middlesex)

Active in 1866

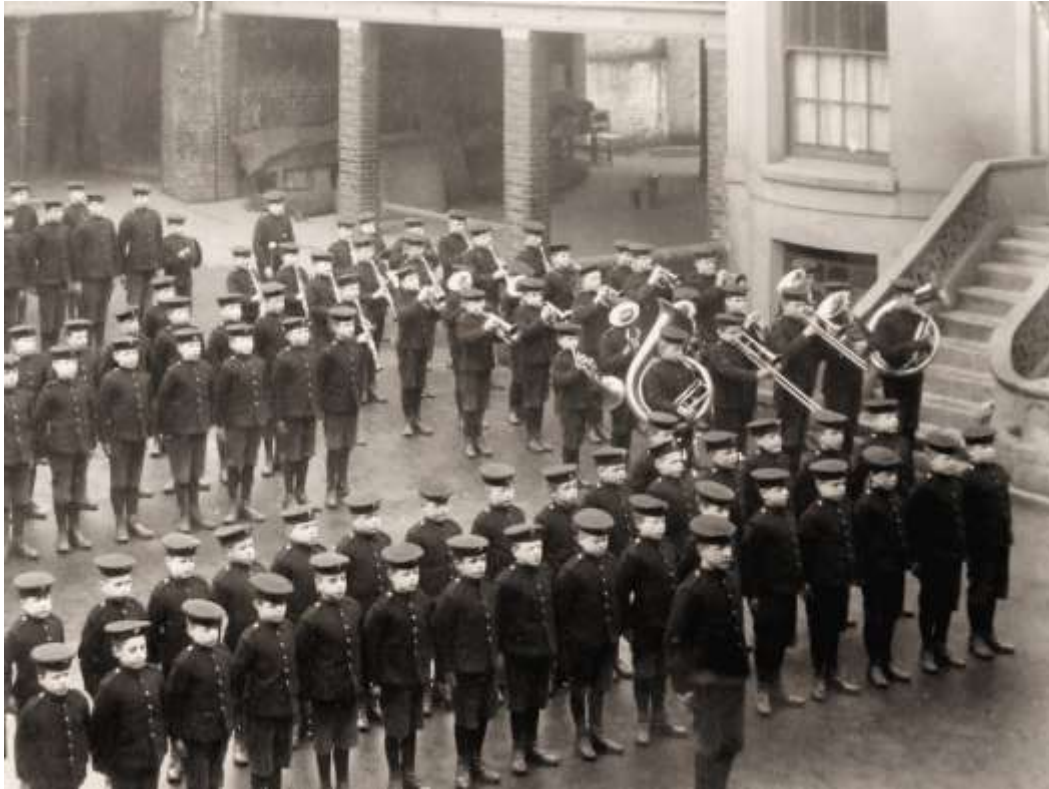
**Camberwell Workhouse Brass Band** (Surrey)

Founded in 1879

**Camden Boys Home Band** (Middlesex)

Active in 1871. Conductor Mr Harman (Hannan?) in 1877, Robert G. Brookes in 1889-1898. Still active in 1911. The boys home in Regent's Park Road, Camden, which was operating from the 1860s to the early 1900s, had a brass band. "... but the most exciting occupation of the boys was playing in the band. By all accounts it was an excellent band and it was a fine sight to see them going over Primrose Hill on Wednesday afternoons....From the prospectus we learn that twenty-five performers with their bandmaster could be engaged for afternoon garden parties,

athletic sports and school treats at a charge of three guineas. They were hired for several sessions by the London County Council and the Zoo." A concert in August 1889 was: A Soldier and a Man; Excelenza; Pepita; Agnes Sorel; Ellen; Pet of the Ball; Merry Days; Ormonde; Helensburgh; Sweetest and Dearest; The Alberts; Love Light; Silver Moonlight; Souvenir de Auber; and Reiter. There were 27 boys in the band in 1894



**Canal Street Wesleyan School Brass Band** (Derby, Derbyshire)

Active in 1878, 28 performers. Still active in 1887

**Cardiff Catholic Schools Brass Band** (Glamorgan)

Active in 1867, conductor Mr Edwards. A juvenile brass band

**Carlisle Reformatory Brass Band** (Stanwix, Cumberland)

Active in 1858 to 1867, a band consisting of 21 of the juvenile inmates.

**Carter Boys' Home Brass Band** (Clapham, Surrey)

Active in 1888. Still active in 1901. The Carter Home for Destitute Boys was founded in 1870 and located at 65 High Street, Clapham. It was taken over by Barnardo's in 1902 and relocated to Kingston-on-Thames in 1933

**Castle Howard Reformatory School Band** (Yorkshire - North Riding))

Active in 1888 and disbanded in 1920. Bandmaster P.J. Richardson in 1889-1894, T. Hudale/Huddle in 1899. GW (Paddy) Berfert, formerly of the 10th Royal Hussars, was bandmaster before 1904. The boys were "always immaculately dressed in military style uniforms, their instruments polished to perfection".

**Caterham Asylum Brass Band** (Surrey)

Active in 1884. The Metropolitan Asylum for Imbeciles at Caterham housed some 2,000 inmates with 140 staff.

**Central London District School Brass Band** (Hanwell, Middlesex)

This was a paupers' school originally founded in 1849, but moving to new premises near Hanwell in 1856. The band was formed in March 1859, conductor G. Kuster, and at that time consisted of 16 boys. Boys were taught to play musical instruments and in the 1860s the brass band often accompanied mealtimes. The band was still active in 1914, conductor Charles Gregory. Later known as West London District Schools Brass Band

**Chadwick Memorial School Band** (Newcastle upon Tyne, Northumberland)

Probably formed in the early 1880s at this Roman Catholic school for boy offenders. Active in 1886. The band and the school closed in 1906. The Bishop Chadwick Memorial School was based in the Grandstand building on the Town Moor, Newcastle from 1882-1906. In 1906 the school transferred to Stanwix Cumbria

**Chailey Industrial School Brass Band** (Sussex)

Founded in 1887. Still active in 1900, playing at Sheffield Park on July 30th. 23 boys in the band in 1890, 10 boys left the band in 1889, six of whom enlisted in military bands. Conductor G. Jamieson in 1892-1893, Mr Glover in 1897-1899. A concert in August 1897 was: Washington Post, Rose d'Amour, The Bell, La Svengali, Queen of the Earth, Frivolity, Killarney, Birthday, The Jolly Band, Funiculi-Funicula, Old Love is Never Forgotten, Welcome, Brother Jonathan, Morning Glories, Warmley, Margherita, Meteor.

**Chalk Farm Boys' Home Brass Band** (Camden, Middlesex)

Active in 1874

**Chase Farm School Brass Band** (Enfield, Middlesex)

Formed in 1886. The School was opened in March 1886 by the Edmonton Union and the 300 pauper boys and girls were transferred to it from the workhouse (the school had a capacity at that time of 400). The band's first public appearance was in January 1887, bandmaster Mr Tye. The band was still active in 1904, conductor W. Styles.

**Chelmsford Industrial School Brass Band** (Essex)

Founded in 1889, with 20 members. First public appearance in April 1890 with 22 boys in the band. Conductor Alexander Munro in 1890-1893, W. Free in 1894, H.C. Cooper in 1903. Still active in 1913. The school was opened in 1872 at Baddow Road, Chelmsford. By 1876 there was a drum and fife band and this was kept on when the brass band was formed, though it may have been dropped by 1893. Also known as the Essex Industrial School Brass Band

**Chertsey School of Handicrafts Brass Band** (Surrey)

Active in 1895. Still active in 1910. Conductor Mr Amos in 1901, A. Montgomery in 1910

**Chester Ragged School Brass Band** (Cheshire)

Active in 1872 to 1900

**Chesterton National School Brass Band** (Staffordshire)

Active in 1869

**Chichester Asylum Brass Band** (Sussex)

Active in the early 1900s

**Christian Brothers' St Joseph Industrial School Brass Band** (Balloonagh, Kerry)

Active in 1893

**Christ's Hospital Boys School Brass Band** (Middlesex)

Founded in 1868, when some of the pupils requested that instruments be purchased to enliven their marching drill. The Treasurer of Christ's Hospital agreed and, with money from his own pocket, purchased a few instruments and paid the salary of the first Bandmaster. Conductor R. Hopkins in 1870. Also active in the early 1900s. The band still exists today as a concert/wind band in the school (now located in Horsham, Sussex)

**Church of the Messiah Domestic Mission Schools Juvenile Brass Band** (Birmingham, Warwickshire)

Formed in 1866 in Broad Street, Birmingham

**Clifton Industrial School Brass Band** (Cliftonwood, Gloucestershire)

Active in 1882. Still active in 1904. Conductor Mr Hibbins in 1883, Henry Miles in 1885, J. B. Wightman in 1893. The school was established in 1849. The object of the school was "to save lads from the streets when driven to them by the loss or misconduct of their parents, to give them a handicraft and to train them in honest principles". The brass band was under instructor Henry Miles, and 2 members of it had enlisted for the Band of the Scots Fusiliers and 1 for the Rifles Band. The Annual Report in April 1884 gave details of the activities of the school and a summary of the last 3 years. The average number of boys was 210 and during 1883 47 had been admitted. 10 were of the 1st class, 15 of the 2nd, 1 of the 3rd, 9 of the 4th and 3 transferred from other schools. Only 3 could read and write above the 2nd standard. Altogether over the 3 previous years 143 boys had been discharged. Situations had been found for 78 of these. 70 of them were doing well, 2 had been convicted, 1 was doubtful, 4 could not be trusted and 1 had died. 17 had been returned to friends. Of these 13 were doing well, 2 had been convicted and 2 could not be traced. 14 had gone to sea. Of these 12 were doing well. 1 had been convicted and 1 had died. 28 had emigrated. This was to Canada and situations were found for them by an agent. Of these 27 were doing well, 1 was doubtful. 5 had been discharged on account of disease. Of these 4 were doing well, 1 unknown. 1 had enlisted and was doing well.

**Clifton Wood Industrial School Brass Band** (Bristol, Gloucestershire)

The Clifton Industrial School was established in 1849 and moved to the former parish workhouse premises at Clifton Wood in 1866. The band was formed some time after 1870, and in 1896 it consisted of 28 performers. Conductor John Williams in 1882. Still active in 1903

**Cockermouth Industrial School Brass Band** (Cumberland)

The school was established in 1881 as the Cumberland County Industrial School. A report in 1882 stated "A band had been formed and the boys were being regularly drilled". The band was still active into the early 1900s

**Colchester Friends' Adult School Brass Band** (Essex)

Active in 1892, secretary Ebenezer Clark. Conductor W. Fisher in 1900

**Colchester National Schools Brass Band** (Essex)

Active in 1891

**Colchester Workhouse Brass Band** (Essex)

Active in 1894

**Colston's School Brass Band** (Stapleton, Gloucestershire)

Active in 1860 to 1895. The school was founded by Edward Colston as Colston's Hospital, later known as Colton's School

**Commercial Travellers' Schools Brass Band** (Pinner, Middlesex)

Active in 1865 to 1871

**Cork Industrious Blind Asylum Brass Band** (Cork)

Founded in December 1860, formed of patients in the asylum, conductor Robert Howard. Still active in 1865

**Corpus Christi School Brass Band** (Miles Platting, Lancashire)

Active in 1903

**Countesthorpe Cottage Homes Brass Band** (Leicestershire)

Active in 1890 to the 1920s, conducted by F. Green in 1891-1895, R. Iliffe in 1905. The home was opened in 1884 consisting of eleven "cottages"



**Coventry Ragged School Brass Band** (Warwickshire)

Founded in 1871. Active through into the 1880s. Renamed Coventry Public Band in 1885, conductor W.H. Lower

**Cowper Street School Brass Band** (St Luke's, Middlesex)

Active in 1873, performing at the opening of the New Hall at the school, which was a middle-class school, off City Road

**Crandall Schools Brass Band** (Hampshire)

Active in the 1900s. The District Pauper School, for the pauper children of Hartley-Wintney, Farnham, and Alton Union, was built at Crandall in 1856, with room for about 200 children.

**Crowle Adult School Brass Band** (Lincolnshire)

Active in the 1900s

**Culcheth Cottage Homes Brass Band** (Lancashire)

Active in the 1890s and 1900s. Bandmaster Robert Bonner in 1908

**Darenth Home for Boys Band** (Kent)

Active in 1911



**Darlington Workhouse Brass Band** (Durham)

Founded in 1883, bandmaster W.J. Hoggett. Still active in 1885

**Deddington Independent School Brass Band** (Oxfordshire)

Active in 1905

**Deepcar School Brass Band** (Yorkshire - West Riding))

Formed in 1859

**Denbigh Lunatic Asylum Brass Band** (Denbighshire)

Founded in summer 1870, leader Mr Robinson (jnr.), conductor Mr Jennings. Still active in 1902. Solo cornet R. Evans in 1880. Conductor C.M. Humphreys in 1898

**Derker Adult School Brass Band** (Oldham, Lancashire)

Founded in 1906

**Derker Council School Boys Band** (Oldham, Lancashire)

Founded in 1899. Active in 1908, conductor Sam Howcroft.

**Derry Model School Brass Band** (Londonderry, County Derry)

Active in 1863

**Desborough National School Brass Band** (Leicestershire)

Active in 1888



**Desford Industrial School Brass Band** (Botcheston, Leicestershire)

Founded in 1884, consisting of 20 boys. Active through to 1913. Conductor G. Payne in 1884-1900. The school was built at Botcheston and opened in 1881, housing 192 boys by 1886

**Devizes Town School Brass Band** (Wiltshire)

Active in 1881

**Devon and Exeter Boys' Industrial School Band** (Exminster, Devon)

The home opened in 1869 at Church Stile, Exminster and soon established its own band from which many boys progressed to serving with regimental bands.

**Digbeth Institute Adult School Brass Band** (Birmingham, Warwickshire)

Active in 1910, conductor T.B. Southall. The Institute was designed by Arthur Harrison, it was officially opened on January 16, 1908 by the wife of the Pastor of Carrs Lane Church, John Henry Jowett, as an institutional church attached to Carr's Lane Congregational Church.

**Dorset County Industrial School for Boys Band** (Milborne St Andrew, Dorset)

The school was established as a Reformatory School in 1856, converting to an Industrial School in 1881. The band was active from 1866 to the 1890s.

**Douro House School Brass Band** (St John's Wood, Middlesex)

Active in 1861

**Dr Barnardo's Homes Brass Band (2)** (Middlesex)

Active during WW1 and in the 1920s. It had performed several times on behalf of the War Office to aid recruitment.

**Dr Bell's School Band** (Leith, Midlothian)

Founded in 1926.

**Drumcondra Male Blind Asylum Brass Band** (Meath)

Active in 1886, 25 members

**Duke of York's Royal Military School Brass Band** (Chelsea, Middlesex)

Active in 1900. Still active in 1905. The school, founded in 1801, relocated to Dover in 1908

**Duke of York's Royal Military School Brass Band** (Dover, Kent)

Active in 1948

**Dundee Industrial Schools Brass Band** (Angus)

Founded in April 1873, conductor R.H. Warren. Still active in 1899. Conductor Mr McArthur in 1899

**Durham County Asylum Brass Band** (Durham)

Active in 1868

**Durham County Industrial School Brass Band** (Durham)

Active in 1896, with 24 players

**Durham Union Workhouse Brass Band** (Durham)

Active from 1863 to the late-1880s. Consisting of youths from the workhouse aged 6 to 14. 14 boys in the band in 1868, conductor George Richardson. A bandmaster was advertised for in 1878 at a salary of £12 per annum to instruct the boys of the band, attending 3 days a week for two hours per day.

**Earl's House Industrial School Band** (Witton Gilbert, Durham)

Active in the 1890s through to WW1. The Durham Industrial School for Boys was opened in 1885, and the band, consisting of 24 boys, was active by 1896.

**East Coast Orphans' Home Brass Band** (Grimsby, Lincolnshire)

Active in 1893

**East Finchley Adult School Brass Band** (Middlesex)

Active in 1892, 1893

**East London Industrial School Brass Band** (Lewisham, Kent)

Active from 1885 to the 1920s. Conductor Mr Cartwright in 1890, Mr Wilmore in 1897. The School opened in 1873 at 43 Leman Street, Whitechapel, but by 1909 was located at 19 Brookbank Road, Lewisham, having also previously been at Porson Street, Lewisham. Conductor in 1906 was T. Willmore.



**Edinburgh Blind Asylum Brass Band** (Midlothian)

Active in 1862. Still active in 1903. Conductor T. Bowie in 1901, Mr Neilson in 1903. A concert in Queen's Park in June 1901 was: Robin Adair (Jenkins), Edwinstowe, Love in a Mist (Round), Echoes of the Ocean (Round), Angels' Chorus (Lecont), Lurline (Wallace), Scottish (Haigh), Dinna Forget (Carl Albert). A concert in Holyrood Park in June 1903 was: Sea Lion (H. Round), Irish Airs (H. Round), Round and Round (H. Round), Echoes of the Ocean (H. Round), Old Kentucky Home (Neilson), Royal Clyde (J. Gleadhill), Ever Green Melodies (H. Round), Fair Italy (H. Round).

**Edinburgh Dr Barnardo's Homes Brass Band** (Midlothian)

Active in 1877

**Edinburgh Original Industrial School Band** (Midlothian)

Formed as a flute band, then became a brass band in 1872. Still active into the 1900s. Known as the "Wee Favourites". 26 players in 1885. Conductor Angus Sutherland in 1890

**Edinburgh Original Ragged School Brass Band** (Midlothian)

*See: Edinburgh Original Industrial School Band*

**Edinburgh Royal Blind Asylum Brass Band** (Midlothian)

Founded in 1882. Active at various times between the early 1880s and the 1960s, with several gaps. Disbanded in 1889, reformed in 1895. Conductor A. Bennett in 1887, Thomas Bowie in 1895, J. Nelson in 1904, Walter Gilroy in 1906. Active in the 1940s/1950s. Probably folded in the 1960s. A concert in the East Meadows in July 1902 was: The North Star (Rimmer), Day Dreams (Smith), Gems of Evergreen Melodies (Round), Round and Round, Scottish Melodies (Roche), Fairyland (Round), Brigadier (Rose), God Bless the Prince of Wales (Round). A concert in July 1904 was: Soldier's Tear (J.O. Hume), Summer Blossom (Knellor), Irish Melodies (Newton), Crown Jewel (Southwell), Dream of Lucknow (Nelson), Standard Gems (T. German), Colleen (F. Burns), Scotch Airs (Round).



**Edinburgh United Industrial School Brass Band** (Midlothian)

Active in 1891. Still active in 1899. Based in Blackfriars Street. A bandmaster/shoemaker was advertised for in October 1894 (to manage the shoemaking department and train and conduct the band). Conductor R. Murray in 1895. A concert in Harrison Park in June 1895 was: Let Erin Remember (Wright), Boccaccio (Suppe), The Jolly Band (Webb), Simplicity (Wright), Prince Charlie or the '45' (Morelli), The Battle and the Breeze (T. Watson), Awfully Funny (Jaxone), Primavera (Morelli), A Day in the Country (Dovan)

**Eling Reformatory School Brass Band** (Hampshire)

Active in 1886, conductor Mr Stuart

**Ely Industrial School Brass Band** (Cardiff, Glamorgan)

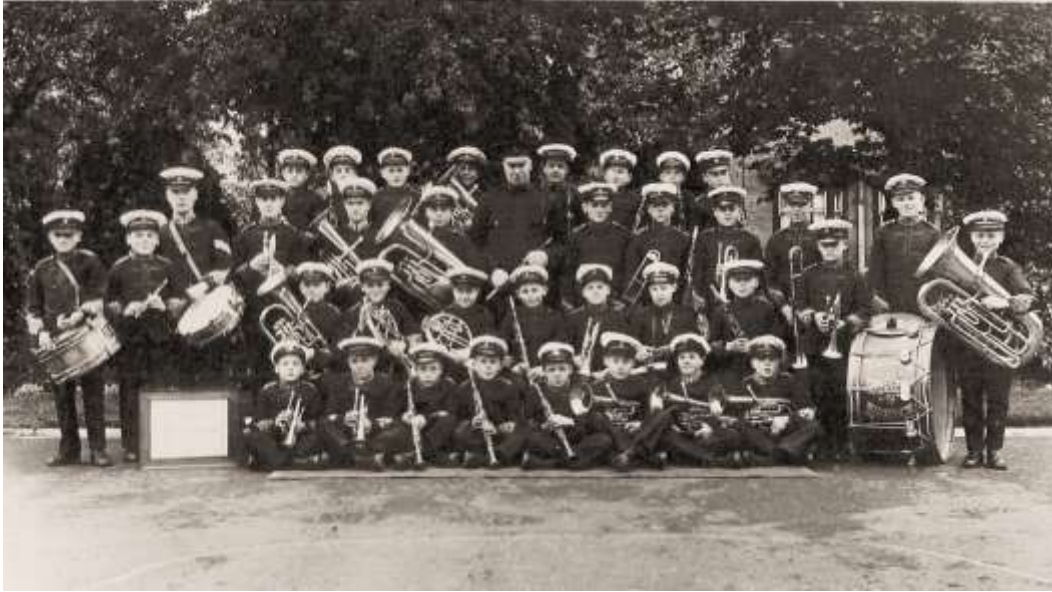
Founded in November 1897, bandmaster Mr Kelly, with 5 boys and instruments, shortly rising to 21 boys by purchasing another 16 instruments at a cost of £35 10s from Messrs Hawkes & Son. Still active in 1898

**Enfield Chase Farm School Boys' Brass Band** (Enfield, Middlesex)

Active in 1900, conductor W. Styles

**Erdington Children's Home Band** (Warwickshire)

Active in the early 1900s through to the 1920s. The Erdington Cottage Homes were opened in 1900 by the Aston Union.



**Essex County Lunatic Asylum Brass Band (1)** (Brentwood, Essex)

Active in 1862, 1863. A successor band was formed in 1884

**Essex County Lunatic Asylum Brass Band (2)** (Brentwood, Essex)

Founded in 1884

**Essex Hall Asylum Brass Band** (Colchester, Essex)

Active in 1855

**Exminster Industrial School Brass Band** (Devon)

Founded in mid-1913

### **Farnborough Industrial School Brass Band (Hampshire)**

Active in 1900, wearing a grey uniform with khaki slouch hats. Still active in 1903. Conductor E. Turner, with 25 boys in the band in 1901. The school was opened in 1898, as one of the "Stephenson Homes" to house children who were placed there by magistrates courts for reasons such as having been found begging or homeless, or frequenting with thieves or prostitutes, or who had committed an imprisonable offence while under the age of 12. The school was also known as a National Children's Home, and closed in 1954.



### **Farningham Home for Little Boys Brass Band (Kent)**

Active from 1869 to the 1910s. Band run at an orphanage at Horton Kirkby, near Farningham. Travelled across Britain raising funds for the Home and making wider known the plight of similar homes across the country - even reaching Inverness in 1890. Conductor William Russell in 1869, H.V. Sparrow in 1906.



**Father Berry's Homes Brass Band** (Liverpool, Lancashire)

The band was active in the late 1890s. Father Berry's Home for Catholic Boys was opened in Liverpool in 1892, other homes also existed. From the early 1900s children were being emigrated to Canada from Father Berry's Homes, and two homes were set up in Canada for this purpose.

**Father Nugent's Boys' Home Brass Band** (Liverpool, Lancashire)

Active in 1870. Still active in the 1900s. The home, located in St Anne's Street, was established in 1868 and ran until 1922. Also known as Liverpool Boys' Refuge Industrial School Band

**Fechney Industrial School Brass Band** (Perth, Perthshire)

Founded in January 1872. Active through to 1917. The school was founded in 1864, in Wells Hill. Conductor Mr Cardy in 1872-1874, Mr Courbard in 1895-1896, John/James Finney in 1897-1904. A concert in the Arngask Hotel Grounds, Glenfarg, in May 1904 was: The Southern Cross (Dalbey), Scotia (Round), Lake and Stream (Hickton), Songs of Ireland (Round), Alice Where Art Thou? (Ascher), Jolly Niggers (Burns), British Song (Round)



**Feltham Industrial School Brass Band** (Middlesex)

Active from 1867 to 1909. Bandmaster Alfred James in 1904. The Middlesex Industrial School was established in 1859 in Bedfont Road, holding up to 700 boys. It closed in 1909. Feltham also had a good musical reputation and the 1908 Annual Report stated that as well as many of their old boys becoming bandmasters in the Army one had become a music master at Harrow. Thomas Sutton (at the school in 1867) became bandmaster of West London Foresters' Band

**Field Lane Industrial School Brass Band** (West Hampstead, Middlesex)

Founded in early 1888 - three of the players that year were T. Nicholls, Charles Ellis and Walter Job. Active through to at least 1907. Mr Bonner was conductor in the early 1900s, J. Middleton in 1907. The school was originally set up as a "ragged school" in Clerkenwell, by Andrew Provan in 1860 and had links with Lord Shaftesbury and Charles Dickens. The boys' school moved to West Hampstead in 1878

**Fisherton House Asylum Brass Band** (Salisbury, Wiltshire)

Active in 1866 to 1889. Conductor C. Fanner in 1889

**Forest Gate Industrial School Brass Band** (Essex)

Active from the late 1860s to the 1910s. Conductor Mr Duncan in 1875. The band was revived in 1897. The building in Forest Lane was initially constructed to provide a school for boys some distance from the choked inner districts of East London. It was used as an Industrial school from 1854 to 1906, formally becoming part of the Forest Gate School District in 1868. A disastrous fire in 1890 claimed the lives of 26 boys. From 1898 to 1906 it was taken over by the Poplar Union and known as the Poor Law School or Poplar Training School. The bandmaster in 1900 was S.T. Webber

**Frampton Cotterell British School Brass Band** (Gloucestershire)

Active in 1862

**Fraserburgh Public School Brass Band** (Aberdeenshire)

Founded in early 1882 - a juvenile brass band. Still active in 1884

**Freemen's Orphan School Band** (Brixton, Surrey)

Active in the early 1900s, conductor J. Hansford. The City of London Freemen's Orphan School was established in purpose-built premises on Shepherd's Lane (now part of Ferndale Road) in Brixton, in 1854.

**Friends' Adult Branch Schools' Brass Band** (Colchester, Essex)

Active in 1895, 1896. Contemporary with the Friends' Adult Central School Brass Band

**Fulwood Cottage Homes Band** (Lancashire)

Founded in 1890, first performance in June 1890, conductor T. Gray. Still active in 1908. The Harris Orphanage was established as a result of a bequest from the estate of Edmund Robert Harris (d. 1877) and was built in 1885, on twelve-acres of the 'Crow Trees' estate on Garstang Road, Fulwood

**Fylde Farm Reformatory School Band** (Lancashire)

The Fylde Farm Reformatory School for Boys was established at Poulton-le-Fylde in 1905 to accommodate 130 boys. The band was active by 1910 and was rated as "quite first-class".

**Galway Boys' Industrial School Brass Band** (Galway)

Active in 1878 to 1887

**Gateshead Workhouse Brass Band** (Durham)

Founded in early 1869, with 12 boys, instruments costing £40, conductor Mr Watson. Active to the 1890s. Conductor John H. Amers in 1879 when they performed at the Yorkshire Fine Art and Industrial Exhibition in York that August.

**George Street Wesleyan School Brass Band** (Colne, Lancashire)

Active in 1895, conductor H. Snell

**Glasgow Royal Blind Asylum Brass Band** (Lanarkshire)

Active in 1854, based at 100 Castle Street, Glasgow. Conductor Robert Scott in 1863. Still active in 1928-1934, conducted by Thomas Scott. In the 1850s the band consisted of 14 players from the male adult workers at the asylum



**Glasgow Society for Social Reform Brass Band** (Lanarkshire)

Active in 1861, conductor Richard John Adams

**Glencree Reformatory Brass Band** (Wicklow)

Active in 1867. Still active in 1890. 28 players in 1889. Also known as Glencree Bandboys Brass Band. A boys band belonging to St Kevin's Reformatory - a charitable institution managed by the Oblate Fathers

**Glenfield Adult School Band** (Leicestershire)

Active in the 1900s

**Glin Industrial School Brass Band** (Limerick)

Active in 1906

**Gloucester County Asylum Brass Band** (Wotton, Gloucestershire)

Active in 1884

**Goldsmith Street Industrial School Band** (Middlesex)

Formed in 1904. The school was established in Goldsmith Street (now Stukeley Street) in 1895 as a Day Industrial School. A boys' brass band was established, with the caretaker taking on the role of bandmaster.

**Gordon Boys' Home Brass Band** (Nottingham, Nottinghamshire)

Active from 1898 through to the 1930s. Bandmaster A. Pounder in 1898. The home was founded in 1885. It supported and trained 45 boys for industrial and other work. The boys were 10-16 years old and wore a uniform.

**Gordon Boys' Home Brass Band** (Woking, Surrey)

Active in the early 1890s and 1900s. Bandmaster Mr Parish in 1898



**Gordon Boys' Home Brass Band** (Fareham, Hampshire)

Founded in 1906, conductor A. Martin

**Gordon Boys' Orphanage Brass Band** (Dover, Kent)

Active in 1891. Still active in 1905. The Gordon Boys' Orphanage and Home in Dover was founded in 1885 by local philanthropist Thomas Blackman. It was named after General Charles George Gordon who had recently died in the siege of Khartoum, and was one of several boys' homes to commemorate him in this way. The home was located at 56 St James' Street, Dover. In addition to the brass band there was also a bagpipe band. Bandmaster A.G. Abbott in 1898, Mr Piddington in 1904



THE BAND AND PIPERS OF THE DOVER GORDON BOYS' ORPHANAGE.

**Grafton Street Industrial School Brass Band** (Liverpool, Lancashire)

Founded in 1875. Active through to 1914. Also known as Holy Trinity Industrial School

**Gravesend Ragged School Brass Band** (Kent)

Active in the late 1850s. Still active in 1864. The school was founded in 1851 by the town missionary, Mr Henson only to close in 1854. A new ragged school was started in 1855, moving to Clifton Road, West Street in 1862. The band was reformed in 1862, conducted by C. Pannell.

**Great Ayton Adult School Brass Band** (Yorkshire - North Riding))

Active during WW1

**Great Bourton Adult School Band** (Oxfordshire)

Active in the 1900s, conductor Sydney Knight

**Greenmount Industrial School Brass Band** (Cork, Cork)

Active in 1890 and through the 1890s

**Greenock Orphan Homes Brass Band** (Renfrewshire)

Active in 1902

**Greenwich and Deptford Union Cottage Homes Band** (Lamorbey, Sidcup, Kent)

Active from the 1900s to the 1920s. The homes, later known as The Hollies, were opened in 1902 to house pauper children away from the workhouse. Also known as Sidcup Schools Brass Band or Sidcup Homes Band. Conductor A.R. Byles in 1907

**Greenwich Hospital Naval School Brass Band** (Kent)

Active in 1870. Still active in 1897

**Grimesthorpe Reform Brass Band** (Yorkshire - West Riding))

Active in 1891. Still active in 1894. Contemporary with the Grimesthorpe Brass Band. There was also a Grimesthorpe Concertina Band at the same time

**Groves Wesleyan School Brass Band** (York, Yorkshire)

Founded in 1895, conductor A. Lickley. Active through to the early 1900s

**Guildford Congregational School Brass Band** (Surrey)

Active in 1901

**Guthrie's Industrial School Brass Band** (Liberton, Midlothian)

Active from 1885. Still active in 1904. Conductor Angus Sutherland. There were 23 boys in the band in 1894. The Ragged Schools were formed by Thomas Guthrie in the city. The school was located in Lasswade Road, Liberton. The nucleus of the brass band was formed in 1850 and consisted of 21 tin whistles and a bass drum. Three years later the whistles were discarded in favour of flutes, and not long afterwards the flutes were strengthened by the introduction of brass instruments, from which combination arose the full brass band. The schools eventually closed in the 1980s.



**Guthrie's Industrial School Brass Band** (Falkirk, Stirlingshire)

Active in 1894. Still active in 1895. The Falkirk school also had a pipe band

**Haberdashers' Company's Hoxton Schools Brass Band** (Hoxton, Middlesex)

Active in 1880 to 1889. The day schools, for 400 boys and 300 girls, were located in Pitfield Street. Fees per term were 28s including stationery, books and lunch-time meals

**Hackney Union Schools Brass Band (2)** (Chipping Ongar, Essex)

Active in the early 1900s through to the 1920s. Based at the Hackney Cottage Homes in Chipping Ongar, built by the Hackney Poor Law Union in 1905.

**Hagley Schools Brass Band** (Worcestershire)

Active in the 1980s

**Hampshire Reformatory Brass Band** (Netley Marsh, Hampshire)

Active in 1869, consisting of 15 boys from the home. Still active in 1905. 17 performers in 1897. Conductor Mr Oaksford in 1871, Mr Butt in 1872, Mr Frost in 1905

**Hampstead Boys' Home Brass Band** (Middlesex)

Active in 1878

**Hanwell Schools Brass Band** (Middlesex)

Active from the mid-1860s to WW1. Bandmaster Charles Gregory in 1914. The Hanwell School was a pauper school under the Central London District Board of Guardians. The school was also known as a "Cuckoo School"

**Harborne Industrial School Brass Band** (Staffordshire)

Active in the early 1900s. Still active in 1905. The school was first certified in 1868, then re-certified for 150 pupils in 1902. It was located in Balden Road.



**Harrow School Brass Band** (Middlesex)

Active in 1889. Conductor W.H. Weston in 1890. May have been associated with the Harrow School Rifle Corps, which in turn was attached to the 9th Middlesex Rifle Volunteers

**Hartlepool Workhouse Boys' Brass Band** (Durham)

Active in 1887

**Hendon Union School Brass Band** (Burnt Oak, Middlesex)

Founded in 1877. Still active in 1895. Bandmaster E.F. Hunwick in 1877-1880, Mr Clarenbone in 1883-1890. The Hendon Union Workhouse was built at Burnt Oak in 1838 and the band was comprised of inmates of the Union School

**Hereford and District Working Boys' Home Brass Band** (Hereford, Herefordshire)

Founded in July 1893, with 28 performers. Conductor Edwin Jones in 1893-1899. The Home for Working Boys was established in 1874

**Hibernian Boys' School Brass Band (1)** (Dublin)

Active from 1866 to 1870

**Hibernian Boys' School Brass Band (2)** (Dublin)

Active from 1897 to 1903

**High Crompton Holy Trinity Schools Brass Band** (Lancashire)

Founded in August 1868, secretary William Warhurst, conductor James Wood

**Hindsford St Anne's School Brass Band** (Lancashire)

Founded in spring 1883

**Holborn Schools Brass Band** (Mitcham, Surrey)

Active in 1876 and through to 1905. Conductor J.F. Beeson in 1904. The Schools, originally established in 1856, provided accommodation, education and 'industrial training' for pauper children away from the main workhouse. The band, which performed at local functions, led to a career for some as military bandsmen.

**Hollingworth National School Brass Band** (Cheshire)

Active in 1870, conductor Robert Lawton

**Home for Little Boys Brass Band** (Hextable, Kent)

Active in the 1890s and 1900s. The Home for Little Boys (also known as the Home for Orphan Boys) was established in 1875. In its early years, the home was advertised as catering 'the fatherless boys of domestic servants and others in like circumstances.' Its intake later became the 'fatherless or motherless boys of respectable parents, who have not received parish relief.'

**Hornchurch Cottage Homes Band** (Essex)

Founded in 1890. A report in September 1890 noted it was "not yet sufficiently matured to play in public". Active through to at least 1944. The Shoreditch Guardians of the Poor opened Hornchurch Cottage Homes in 1889. They continued in use as children's homes until 1984 - a full 95 years of residential childcare. The cottage homes had 13 houses which could each accommodate around 30 children. Many boys found places in military bands due to the training they received in the Homes' thriving band. At any time up to forty boys were in training under the eye of Matthew Larter, bandmaster until 1910, or his successor Henry Allden. However the practice which this involved was not always viewed positively by the school inspector who in 1922 urged that "if possible, the boys should not be taken for band practice during school hours". The London County Council took over the homes in 1930.

**Hornsey Adult School Brass Band** (Middlesex)

Active in the 1900s. Conductor T.W. Page in 1907

**Huish School Brass Band** (Huish Episcopi, Somerset)

Active in 1919

### **Hull Orphan Sailors Childrens Brass Band (Yorkshire - East Riding))**

Active from the mid-1870s to around 1910. In the late 1870s the band went on tour around the country raising money for the home and awareness of the plight of similar orphanages. Conductor J. Mason in 1884, Joseph/James Arnott in 1889-1896, Mr Greig in 1900. The home was established in 1867, at Thanet House, a large property on Park Street, Hull. Its purchase was largely funded by a £5,000 donation from Sir Titus Salt, the Bradford manufacturer and philanthropist. By 1893, however, the space was proving increasingly inadequate, and new cottage homes were built on Cottingham Road, opening in 1895, known as Newland Cottage Homes. The boys' band performed at local social events. For a number of years, the band also went on fund-raising tours but in 1907 it was decided that the absence of the boys from the homes, and the attention they received, were not good for them, and the tours were then severely curtailed. The band was composed of children from the Port of Hull Society's Sailors' Orphans' Homes, a forerunner of the Newland Orphan Homes which was in existence in the 1920s. Today the Sailors Families Society seems to be the descendant of those earlier Orphans societies.



**Hull Spring Bank Orphanage Brass Band** (Yorkshire - East Riding))

Active in 1875, bandmaster Thomas Broady. Active through to 1927. Conductor R. Smith in the 1870s, Mr Pitt in 1912



**Hunningham School Brass Band** (Warwickshire)

Founded by Freddie Gilbert. Active in the 1930s. Probably folded in 1939

**Hunslet Ragged School Brass Band** (Yorkshire - West Riding))

Active in 1885

**Hythe Adult School Brass Band** (Colchester, Essex)

Active in 1899, conductor A.J. Barber

**Ipswich Asylum for Idiots Brass Band** (Suffolk)

Founded in 1854, consisting of the attendants and assistants, and was used twice a week in teaching the elder boys to march.

**Iron School Brass Band** (Colne, Lancashire)

Active in 1867 - based at the Adult Iron School.

**Islington District Schools' Brass Band** (Middlesex)

Active in 1879

**Islington Poor Law School Brass Band** (Middlesex)

Formed in 1881. Based at the Poor Law School (workhouse school) in Hornsey Road. Conductor Mr Langford in 1886, J. O'Brien in 1900

**Islington St Mary School Band** (Middlesex)

Active in 1876

**Jersey Barnardo's Home Brass Band** (Gorey, Isle of Jersey)

Active in 1893. Still active in 1902. Conductor Mr Whistle in 1898, A. Tesh in 1902, A. McKee in 1904. The home was located at Teighmore, Gorey, and opened in 1878, closing in 1938.

**Kendal Workhouse Brass Band** (Westmorland)

Formed in June 1866 by John Bateman, who was also the conductor. First public appearance in January 1867. Still active in 1875. It was actually a juvenile band made up from boys in the workhouse.

**Kent County Industrial School Band** (Kingsnorth, Kent)

Active from the late 1870s to 1913. Bandmaster E. Clinton in 1893-1906. The school was also known as Stanhope Industrial School for Boys and was built in 1875 to house 200 boys. A "good band" had been established by 1879, and up to 40 boys performed in it, and they regularly went from the school to join army bands.

**Kerrison School Brass Band** (Thorndon, Suffolk)

The Kerrison Reformatory School for Boys was founded in 1856. In 1882 a drum and fife band of 25 boys was formed. The band became very popular in the county. Such was its success in October 1898, drums and fifes gave way to brass band instruments, a new bandmaster and uniforms having just been acquired. Conductor Mr Evans in 1899. By 1901 the numbers had increased to 30 and by 1915 there were 53. They were quite a sight in their blue uniforms with red trim when they marched up to church every Sunday. At the resignation of bandmaster Sapey in 1934, and no provision remained for the salary of a successor, it was reluctantly decided that the band should not continue.

**Kettering National School Brass Band** (Northamptonshire)

Active in 1888

**King's Heath Adult School Band** (Birmingham, Warwickshire)

Founded in 1903, conductor Harry Price. Active through to the 1920s. Also known as Kings Heath Early Morning School Band

**Kingsleigh School Brass Band** (Bournemouth, Hampshire)

Active in the 1990s

**Kingswood Reformatory School Brass Band** (Bristol, Gloucestershire)

Active in 1878 through to 1905. The band had 25 performers in 1894 and was conductor by J. Bates. The school was opened and certified in 1854, eventually growing to 150 pupils.

**Kirk Edge Reformatory Brass Band** (High Bradfield, Yorkshire - West Riding))

Active in 1902, uniform was white sailor suits. The Kirk Edge home was established in 1872 as a Roman Catholic orphanage, closing in 1887. Following a disastrous fire on board the Reformatory Ship Clarence in July, 1899, the 120 or so inmates were eventually transferred to the Kirk Edge premises which were temporarily certified for use as a Reformatory on September 3rd of that year. The certificate was terminated on November 10th, 1905, with the boys moving to occupy the new land-based St Aidan's Nautical School at Farnworth, near Widnes. The site is now a Carmelite convent.

**Kirkdale Industrial Ragged School Brass Band** (Lancashire)

Active from 1866 to the early 1900s. The school was established in 1843 and by 1866 it accommodated 1,250 children. In addition to the band, a ship was erected on the grounds and a former sailor provided training.

**Lanark Orphans' Brass Band** (Lanarkshire)

Active in 1875 to 1880

**Lawrence Street Chapel School Brass Band** (Birmingham, Warwickshire)

Founded in 1866, conductor Mr Shelley. Active to 1870. Associated with the Church of the Messiah in Lawrence Street

**Leavesden Industrial School Band** (Hertfordshire)

In 1868, the St Pancras Guardians built a new industrial school for pauper children in the parish. They acquired a 38-acre site in a rural location at Leavesden. By 1896 it held over 600 children. The band was active from 1874 to the 1920s, conducted by Mr Piddington in 1885-1887, W.T. Graves in 1891, W. Woodland in 1900. Also known as St Pancras School Brass Band

**Leeds Industrial School Brass Band** (Burmantofts, Yorkshire - West Riding))

Founded in 1889, conductor Mr Tidswell. Still active in 1893, when there was a complaint to the Leeds Mercury - "Gentlemen, Allow me, through the medium of your paper, to draw the attention of the public in general to a terrible and barbarous torture to which we the unfortunate inhabitants round about the Leeds Union are nightly subject for two mortal hours. I allude to the so-called practising of the Industrial Brass Band. This band, to the best of my remembrance, was inaugurated in the year 1889, four years ago. One would think that after four years' unceasing tuition the members of this band would have become fairly proficient musicians. I thought so, too, but such is not the case. 'God Save the Queen' on the 'blow as you will' system seems to be the summit of their ambition; but even worse than this farce of practising is the fiendish delight with which each member of the band blows his instrument inside out before commencing his cowardly work for the evening. I do not ask that this nuisance may be done away with, but merely that some means may be found to alleviate our sufferings. Yours, etc., A Martyr"

**Leeds Reformatory School Brass Band** (Adel, Yorkshire - West Riding))

The band was active from the early 1870s to the 1900s. Still active in 1902. Also known as Adel Reformatory Brass Band. The school was opened at Adel East Moor in 1857. Mr J.W. Cheshire was conductor during the 1880s, John Binder in 1890. A bandmaster was advertised for in March 1897, salary £40, with board, lodging and washing. A swimming pool was built in 1887, and the boys activities included joinery, tailoring, shoemaking, farm work, calligraphy, building trades, cooking and blacksmithing. Many of the boys went on to join the Grimsby fishing fleet for which their swimming training was considered useful. A report from 1888 states: "Before I visited the classes under instruction, I heard the well-trained band perform a selection from Masaniello. I have heard that particular excerpt performed by a goodly number of bands at one time and another, and I have heard it rendered by grown-up musicians in a manner which would give no cause for envy to the band-boys of the Reformatory at Adel." In 1896 there were 22 boys in the band. A typical story of one of the boys notes: "He was rescued from the demoralising custody of dissolute parents, and being placed in the band, speedily exhibited that passion for music and close application to the study of its principles which has led to his occupying the honourable position of bandmaster in Her Majesty's service."

**Leeds Union Industrial School Brass Band** (Yorkshire - West Riding))

Active in 1879, conductor Robert Buckle



**Leicester and Rutland Lunatic Asylum Brass Band** (Leicestershire)

Founded in 1854 and active through the 1860s

**Leicestershire and Rutland Lunatic Asylum Brass Band** (Leicester, Leicestershire)

Founded in September 1854 on the belief that "music of this kind was an appropriate amusement for outdoor recreation". Active through to 1876

**Leith Industrial School Brass Band** (Midlothian)

Active in 1888. Still active in 1903

**Letterfrack Industrial School Brass Band** (Galway)

Active in 1894

**Letterkenny Asylum Brass Band** (Donegal)

Active in 1875. Conductor Mr Hogan in 1895. Still active in 1901. Also known as the Letterkenny Abercorn Brass Band in the 1870s

**Licensed Victuallers' School Brass Band** (Vauxhall, Surrey)

Active in 1867, conductor Mr Tyler. Still active in 1890. Conductor William Coates in 1883. The school was located in Kennington Lane.

**Limehouse Children's Establishment Brass Band** (Middlesex)

Active in 1861

**Limehouse Workhouse School Brass Band** (Middlesex)

Active in the 1870s. Still active in 1891. The Limehouse school was set up by the Strand Union

**Limerick Industrial Schools Boys' Brass Band** (Limerick)

Active in 1891. The school was run by the Christian Brothers

**Limerick Orphanage Brass Band** (Limerick)

Active in 1886 to the 1900s

**Lincoln Blue Coat School Brass Band** (Lincolnshire)

Founded in 1874, conductor Mr Lilley, gave its debut performance in December that year. Still active in 1881

**Lincoln Workhouse Boys' Brass Band** (Lincolnshire)

Founded in 1894

**Lincolnshire Pauper Asylum Brass Band** (Bracebridge Heath, Lincolnshire)

Formed in late 1853. The asylum had been opened in 1852, originally to house 250 inmates.

**Linthorpe Industrial School Brass Band** (Yorkshire - North Riding))

Founded in 1893. A boys' brass band

**Little Bromwich Early Morning School Brass Band** (Warwickshire)

Active in the early 1900s to 1915. Conductor Mr Hall in 1907

**Little Mill Reformatory Brass Band** (Pontypool, Monmouthshire)

Active in 1914

**Littlemore County Asylum Band** (Oxfordshire)

Active in the 1880s. The Littlemore Hospital (Oxford County and City Pauper Lunatic Asylum) was built in 1848 housing up to 200 patients.

**Liverpool Blind Asylum Brass Band** (Lancashire)

Active in 1897 and the 1900s. The school was in Brunswick Road.

**Liverpool Blue Coat School Band** (Lancashire)

Founded in 1903. Still active in 1910

**Liverpool Boys' Orphanage Band (Lancashire)**

The Liverpool Catholic Boys Orphanage, a certified industrial school, was opened in Beacon Lane from 1863 to 1949. The band was active in the 1890s through to its closure. Run by Sisters of Charity of St Vincent de Paul, it was also known as St Vincent de Paul Brass Band, Beacon Lane Boys Band, Liverpool Orphanage Brass Band.



**Liverpool Corporation South School Brass Band (Lancashire)**

Active in 1863

**Liverpool Drunkards' Home Good Templar Brass Band (Lancashire)**

Active in 1887, conductor W. Room

**Liverpool Industrial Ragged School Brass Band (Lancashire)**

Active in 1871, through to the 1900s. Conductor Mr Lister in 1884, A.B. Smith in 1904, The industrial school was established on Beaufort Street by Rev. Canon Henry Postance.

**Liverpool Orphan Boys Asylum Brass Band (Lancashire)**

Active in 1860 to 1881. The asylum was located on Myrtle Street

**Liverpool Ragged Schools Brass Band (Lancashire)**

*See: Soho Street Ragged Schools Brass Band*

**Liverpool Reformatory Farm School Brass Band** (Newton-le-Willows, Lancashire)

Active in the 1880s. Still active in 1905. The Liverpool Juvenile Reformatory Farm School, Mill Lane (now Winwick Road), was operational in various guises between 1859 and 1992. It was rebuilt in 1867, accomodating 140 boys up to 14 years old. Abel Jones, who lived in Earlestown from 1861 until his death in 1886, was the band's first conductor. Conductor E.N. Roff in 1908. As an aside, it is interesting to note that a certain delinquent, sent to such a school at the age of 12, would never have otherwise had the opportunity to learn to play an instrument, became world famous. This school was the New Orleans Home for Colored Waifs in Louisiana - he was Louis Armstrong. Also known as Newton Farm School Brass Band

**Liverpool Seamen's Orphanage Band** (Lancashire)

Active in the 1870s to the 1900s. The orphanage was opened in 1869 and the band was active in 1870, playing at the laying of the chapel foundations at the site at Newsham Park. Conductor G.C. Smith in 1900

**Liverpool South Corporation Schools Brass Band** (Lancashire)

Founded in mid-1861, conductor Mr Emidy, instruments and uniforms costing nearly £80. Still active in 1864

**Llanbadarn Fawr Board School Brass Band** (Cardiganshire)

Active in 1903, conductor J. Arthur Jones

**Lochgilphead Asylum Brass Band** (Argyllshire)

Active in 1888 through into the 1900s. The band of the Argyll and Bute Asylum

**London Day Industrial School Brass Band** (Holborn, Middlesex)

Founded in 1904. Still active in 1908

**London Orphan Asylum Brass Band** (Watford, Hertfordshire)

Active in 1893. Still active in 1896. The Asylum was opened in Watford in 1871. A concert in July 1895 was: Smile Once Again (Millard), Trafalgar (Round), In this hour of softened splendour (Pinsuti), Sweet Briar (Round), The Village Blacksmith (Weiss), Louisa Miller (Verdi), Frulingserwachen (Bach), Post Horn Galop (Koenig).

**Longton Zion Sabbath School Brass Band** (Staffordshire)

Active in 1868, conductor R. Rigby

**Lostock Industrial School Brass Band** (Bolton, Lancashire)

The school was opened at Lostock Junction in 1870. For a time one of the teachers at the Industrial School took to teaching the boys music and formed a band. The band was short lived and active in 1899 and the early 1900s.



**Lower Norwood Industrial School Brass Band** (Surrey)

Active in 1861. Still active in 1900. Bandmaster Mr Moody in 1882. This was a workhouse school operated by the Lambeth Board of Guardians, located in Elder Road, West Norwood. Also known as Lambeth Industrial School Brass Band

**Macclesfield Industrial School Brass Band** (Cheshire)

Active in the 1880s to 1900s, bandmaster Mr Knutton. The school was founded in 1858, with a permanent building being erected in 1866 at Turnock Street. The bandroom could also serve as an infirmary if necessary.

**Maidstone Union School Brass Band** (Kent)

Active in 1891

**Manchester and Salford Boys and Girls Refuges and Homes Band**  
(Strangeways, Lancashire)

Active in 1884 to the 1910s. The homes were established in 1870 by Leonard Shaw and Richard Taylor, who were Sunday school teachers at St Ann's Church Manchester. They were determined to take some action to help the many children and young people whom they observed living rough on the city's streets, and set up orphanages and homes for a range of poor and convicted children. Their Central Refuge and Workshops were in Francis Street. This also accommodated 120 boys from whence the band was formed. Also known as the Manchester and Salford Children's Mission Brass Band



**Manchester and Salford Reformatory for Boys Brass Band** (Blackley, Lancashire)

Active from 1880 into the 1890s. The school opened in 1867 on French Barn Lane, Blackley, closing in 1905. Also known as Blackley Reformatory Brass Band

**Manchester Ragged School Brass Band** (Lancashire)

*See: Ardwick Green Industrial School Brass Band*

**Manchester Self Supporting Boys' Home Brass Band** (Lancashire)

Active in 1889 into the 1890s. Based at the Orphan Boys' Self-Supporting Home, Bridgewater House, Manchester

**Market Weighton Reformatory School Brass Band** (Yorkshire - East Riding))

Active from 1870 to the early 1900s . In 1872 they had a "zouave" uniform of velvet with scarlet hose. Conductor F. Macdonald in 1880, H.T. Leahy in 1896. The St William's Yorkshire Roman Catholic Reformatory was opened in 1856

**Markland School Bass Band** (Creswell, Derbyshire)

Active in the 1980s, conductor Fred Bowker in 1986. The school closed in 1991

**Marston Green Cottage Homes Band** (Warwickshire)

Founded in 1882, conductor Mr Fisher. Still active in the 1900s, conductor F. Wilson. The Homes was built in 1879 by Birmingham Union, accommodating up to

420 children. A number of boys were trained to form an efficient brass band, which, besides playing at the Homes, had frequent engagements in the district.

**Mayford Industrial School Brass Band** (Surrey)

Active in the early 1900s to 1920s

**Meath Protestant Industrial School for Boys' Brass Band** (Blackrock, Dublin)

Active in 1883, conductor Mr Johnson. The school was based at Elmcliff, Blackrock

**Medomsley Cottage Homes Band** (Deaf Hill, Durham)

Cottages built by the North Eastern Railway. The band was formed in the 1900s.

**Mellor Ragged School Brass Band** (Lancashire)

Active in 1891

**Metropolitan and City Police Orphanage Brass Band** (Twickenham, Middlesex)

Founded in January 1873, with 20 boys aged up to 14, conductor Mr Alcock. Still active in 1893

**Middle Class School Brass Band** (Islington, Middlesex)

Active in 1867. Still active in 1878. The school was located at Bath Street, City Road, opening in October 1866 with 700 pupils. Its intent was to "provide for boys who are destined for commercial life". The school moved to Cowper Street in 1869.

**Middlesbrough Industrial School Brass Band** (Yorkshire - North Riding))

Founded in 1895, with £80 granted by the School's committee towards the cost on instruments. Still active in 1905

**Middlesbrough Workhouse Brass Band** (Yorkshire - North Riding))

Active in 1885, conductor Herbert Milburn. Still active in 1897

**Milbourne Industrial School Brass Band** (Wiltshire)

Active in 1891

**Mile End (Old Town) Workhouse Brass Band** (Middlesex)

Active in 1860. This was a juvenile brass band formed of the children at the workhouse school. Conductor Mr Froggett in 1865. Still active in 1879

**Mile End Industrial Schools Band** (Middlesex)

Active in 1871

**Mile End Scattered Homes Brass Band** (Middlesex)

Active in the early 1900s. The eleven homes were operated by the Mile End Union in Mile End Old Town, housing 159 children. The original Mile End Old Town workhouse was in Bancroft Road, with the "scattered homes" each being less than five minutes walk away.

**Milton Road Schools Brass Band** (Wokingham, Berkshire)

Founded in 1879. Still active in 1884. Conductor Mr Thorn in 1880

**Milton Yard Ragged School Brass Band** (Islington, Middlesex)

Active in 1866 to 1868

**Minera National School Brass Band** (Denbighshire)

Active in 1891. Conductor J. Williams in 1892

**Monmouthshire Reformatory for Boys Brass Band** (Monmouthshire)

The Monmouthshire Reformatory School for Boys was certified for operation February 7th, 1859. Its was located at Little Mill, in the parish of Mamhilad, near Pontypool. The brass band was formed in 1910. The school closed in 1922.

**Mossbank Industrial Schools Brass Band** (Hogganfield, Lanarkshire)

Active in 1875 to 1904. Bandmaster W.B. Howell in 1881-1892

**Mossend Industrial School Brass Band** (Lanarkshire)

Active in 1896

**Moulton Adult School Brass Band** (Northamptonshire)

Active in the 1900s, conductor J.C. Cox in 1909

**Nantwich National School Brass Band** (Cheshire)

Active in 1873, conductor Mr Hassall. Still active in 1880

**Navy League Training Home Band** (Liscard, Cheshire)

Active in 1907. The home was based in Withens Lane



**Nazareth House Orphanage Brass Band** (Ditton, Lancashire)

Active in the 1930s and 1940s. The Nazareth Houses were established by the Sisters of Nazareth (originally the Little Sisters of the Poor) from the early 1850s, and were located across the UK and overseas.

**Nether Green School Brass Band** (Yorkshire - West Riding))

Active in 1853

**Nether Poppleton School Brass Band** (Yorkshire - West Riding))

Active in 1884, conductor Mr Cross

**Newcastle Industrial Schools Band** (Newcastle upon Tyne, Northumberland)

Founded in September 1869 by G.A. Brumell, instruments costing £60. 25 members taught by J.H. Amers. First public performance in December 1869. Still active in 1882

**Newcastle Ragged and Industrial Schools Brass Band** (Newcastle upon Tyne, Northumberland)

*See: Newcastle Industrial Schools Band*

**Newcastle Workhouse Brass Band** (Newcastle upon Tyne, Northumberland)

Formed in 1878, formed among the boys in the workhouse. The instruments cost £150 for the 31 boys in the band (aged 7 to 13). Their uniforms consisted of red tunics with yellow facings, dark blue trousers and caps with red facings. Active through into the 1890s. Conductor J.H. Amers in 1879 (who also conducted the Gateshead Workhouse Brass Band that year), John Cowans in 1883

**Newington Reform Club Brass Band** (Surrey)

Active in 1889, 1890. Conductor Edward Reeder in 1889

**Newport Schools Band** (Hampshire (Isle of Wight))

Active in the 1900s

**Newtownstewart Model School Brass Band** (County Tyrone)

Active in 1870, conductor Thomas J. Hogben. Still active in 1871

**Norfolk County Asylum Brass Band** (Thorpe St Andrew, Norfolk)

Active in 1880. Still active in 1896

**North and East Ridings Asylum Brass Band** (York, Yorkshire)

Active in 1874. The North and East Ridings Pauper Lunatic Asylum was located in Shipton Road

**North Eastern Reformatory for Boys Band** (Stannington, Northumberland)

The band was formed in 1903 (however there is a report of a brass band from the North Eastern Reformatory playing at the Morpeth Horse Show in June 1901, with 25 players). The school was established in 1857 by the "Newcastle, Northumberland, and Durham Society for the Repression of Juvenile Crime, and the Reformation of Youthful Delinquents".

**Northampton Lunatic Asylum Brass Band** (Northamptonshire)

Founded in 1860 from the inmates. Still active in 1867

**Norwich Blind School Brass Band** (Norfolk)

Active in 1860 to 1902. The Asylum and School for the Indigent Blind was founded in 1805 and was located in Magdalen Street. The performers were all blind. The band folded in late 1901 partly owing to sickness, and partly owing to the removal of pupils from the school, but mainly to the advanced age of the bandmaster.

**Norwich Reform Club Brass Band** (Norfolk)

Founded in 1884. First public appearance on Saturday 22nd November 1884. Conductor G. Want in 1885

**Norwood Children's Home Brass Band** (Surrey)

Active in the 1920s and 1930s. The home was located at Elder Road, West Norwood, originally established by the Lambeth Board of Guardians





**Norwood Jewish Orphanage Band** (Surrey)

Active in 1907. The orphanage, originally established in Mile End, set up a purpose-built building at West Norwood in 1866, housing 220 children.

**Nottingham Ragged School Brass Band** (Nottinghamshire)

Active in 1859

**Oadby Adult School Institute Band** (Leicestershire)

Active in the 1900s to the 1930s

**Oakbank Industrial School Brass Band (1)** (Aberdeen, Aberdeenshire)

Active from 1881 to 1901. The Oakbank Industrial School was founded in 1878 on Mid Stocket Road (Aberdeen Industrial School for Boys). Conductor Mr Fenwick in 1892, W.B. Wood in 1895, Charles Bannerman in 1901. A successor band was formed at the end of 1902.

**Oakbank Industrial School Brass Band (2)** (Aberdeen, Aberdeenshire)

Founded in late 1902, bandmaster Mr Ryan. Active to the 1920s. Conductor Alexander Napier in 1905, Mr Stavert in 1911, Mr Rowson in 1916, W.B. Denham in 1917, G.H. Hill in 1926. They acquired a new set of brass instruments in 1911, of which the most delicate parts had been strengthened with wire shields! 8 Bb cornets, 2 Eb tenor horns, 2 Bb baritone horns, 2 Bb euphoniums, 2 Bb trombones, 3 Eb bombardons, 1 side drum.

**Ockham Industrial School Brass Band** (Surrey)

Active in 1867

**Old Meeting School Brass Band** (Kidderminster, Worcestershire)

Active in 1858

**Oldham Blue Coat School Brass Band** (Lancashire)

Active from 1852 to the 1910s. Based at the school endowed by Thomas Henshaw. Conductor Sam Howcroft in 1904

**Oldmill Reformatory Brass Band** (Aberdeen, Aberdeenshire)

Founded in October 1874. Still active in 1902. Conductor Mr Wood in 1876-1895

**Omagh District Lunatic Asylum Brass Band** (County Tyrone)

Founded in 1864, with 18 players, composed of officers, servants and inmates. Still active in 1875

**Original Industrial School Brass Band** (Edinburgh, Midlothian)

Active in 1890 and 1897

**Orphanage Institute Brass Band** (Liverpool, Lancashire)

Active in 1860

**Ousegate School Brass Band** (Selby, Yorkshire - West Riding))

Active in 1889, conductor Mr Dent

**Oxford Adult School Brass Band** (Oxfordshire)

Active in 1890

**Paisley Industrial School Brass Band** (Renfrewshire)

Formed in 1874. Still active in 1887. Conductor Mr Cardy in 1875, Mr Steel in 1885. The school was located in Albion Street.

**Park House School Brass Band** (Gravesend, Kent)

Active in 1861, conductor Herr Standhaft

**Park Lane School Brass Band** (Prestwich, Lancashire)

Active from the 1850s. Bandmaster William Jones from the 1850s to 1877. Still active in 1885. The school was opened in 1848, built by R.N. Philips, owner of Philip's Park, and regularly entertained guests at the Park. It played at Philips' appointment as High Sheriff of Lancashire in 1856 and the opening of Agecroft Bridge in 1862. Occasionally referred to as the Whitefield Park Lane School

**Parrock Hall Orphan Boys Home Brass Band** (Gravesend, Kent)

Active in 1879 to 1896. Conductor Henry Edwards in 1887-1891. The Milton Industrial School for Boys was established in 1875 at Parrock Hall on Joy Road, Milton, to accommodate 160 'delinquent' boys. A report of 1896 states: "There is a brass band of twenty-six under careful instruction. Emigration to Canada is largely used as a means of disposal for the boys."

**Pendleton Ragged School Brass Band** (Lancashire)

Active in 1904 to 1908. The school was established in 1858, moving to new premises in 1907 (where it was known as Windsor Institute and Pendleton Ragged School).

**Peninsular and Oriental Company's School Brass Band** (Southampton, Hampshire)

Active in 1865. The school was located in Paget Street. Still active in 1867, conductor R.W. Cane

**Penn Street Industrial School Brass Band** (Deritend, Warwickshire)

Active in 1901, 1902. The school was established in 1846, moving to Penn Street (now Bromley Street) in 1853. It relocated to Witton, north of Birmingham in summer 1902

**Percy House School Brass Band** (Isleworth, Middlesex)

Active in 1904. Still active in 1907

**Philanthropic Society's Farm School Band** (Edgware, Middlesex)

Active in 1884. A branch of the Redhill Philanthropic Society's Farm School which was located in Edgware

**Philanthropic Society's Farm School Band** (Redhill, Surrey)

Founded in 1857, with 17 boys. 12 boys in the band in 1863. Active to the late 1900s. Conductor Dr Wallis in 1858, Drill Sergeant Holman in 1863, M.G. Herbert in 1900. The school was founded in 1849, with most of its pupils being committed by the magistrates. The school was classed as a reformatory. Farm work was the principal occupation, although carpentry, tailoring and other trades were also taught. Two brass bands and one reed band were formed by the last quarter of the nineteenth century. Dr Wallis, in 1857, holding a doctorate in music, organised a select number of farm school boys into a 'brass military band of music'. His terms of instruction being moderate, and the 'advantages worth the outlay', the committee approved the sum of 50 guineas for the purchase of musical instruments. During 1859, Mr Holman, a drill and bandmaster, was appointed on a salary of £50 per annum, 'with lodging and firing'. The band became a catalyst to teach boys to respond to orders with alacrity, and the performances of the band gave a positive image of the establishment. The formation of the band attracted donations of more instruments. Some boys less suited to field labour excelled in the band and went on to join the army as 'band boys'. In 1889 the bandmaster was

ordered to 'use the band at every reasonable occasion'. In 1890 the bandmaster was N. Mallinder, assistant bandmaster W.G. Hearne.

**Philipstown Reformatory Brass Band** (Offaly)

Active in 1874. Still active in 1882

**Portishead Nautical School Brass Band** (Somerset)

Active in the 1920s. The Nautical School was built to replace the old wooden training ship Formidable, an ex-naval battleship. The building was designed to look like the Dartmouth Naval College.

**Portora Royal School Brass Band** (Enniskillen, County Fermanagh)

Active in 1860

**Portsea Island Union School Brass Band** (Hampshire)

Founded in 1866. Still active in 1904. Conductor Mr Haywood in 1867, Squire Graham 1888-1897. This was a band of the Union School of the Portsea Island Workhouse.

**Portslade Industrial School Band** (Sussex)

Active in the 1890s. Still active in 1904. Half-time schooling from the age of 12 was combined with a full band practice for an hour each morning.

**Portsmouth Children's Home Boys' Brass Band** (Hampshire)

Active in 1901. Still active in 1904

**Portsmouth Lunatic Asylum Brass Band** (Hampshire)

Active in 1903, consisting of attendants at the Asylum

**Portsmouth Workhouse Boys' Brass Band** (Hampshire)

Active in 1880. Still active in 1900

**Preston National School Brass Band** (Lancashire)

Active in 1846

**Prestwich School Brass Band** (Lancashire)

Active in the 1880s, conductor W.H. Kelly in 1883

**Purbrook Industrial School Brass Band** (Cosham, Hampshire)

Active in 1886. Still active in 1905

**Radford Training Institute Brass Band (1)** (Nottingham, Nottinghamshire)

Active in 1882 through the 1880s. Folded some time before 1893 when a successor band was formed. An institute for the education and welfare of pauper boys in Nottingham, run by the Nottingham Board of Guardians

**Radford Training Institute Brass Band (2)** (Nottingham, Nottinghamshire)

Founded in January 1893, conductor A. Hindley. Bandmaster Mr Showell in 1895. Active to 1899. Also known as Nottingham Training Institute Brass Band and Nottingham Union Boys' Brass Band. The boys ranged in aged from 9 to 14.

**Radnor Street Schools Mission Brass Band** (London)

Active between 1883 and 1904

**Railway Street Adult School Brass Band** (Colne, Lancashire)

Active in 1866

**Raunds National School Brass Band** (Northamptonshire)

Founded in 1880. Still active in 1881

**Red Bank Ragged School Brass Band** (Strangeways, Lancashire)

Active in 1869, with 35 members receiving instruction every Wednesday evening

**Red House Home Brass Band** (Musselburgh, Midlothian)

Active in the 1890s, tutored by John Ferguson. The Red House Home for Destitute Boys was established in 1874 by Rev Gavin S. Muir

**Ribchester School Brass Band** (Lancashire)

Active in 1886. Still active in 1899

**Richmond Lunatic Asylum Brass Band** (Dublin)

Active in 1884, conductor Mr Tighe, with twenty performers, 10 of whom were patients.

**Rossall School Rifle Corps Brass Band** (Fleetwood, Lancashire)

Founded in 1866. Band of the 65th Lancashire Rifle Volunteers, which were based at Rossall School and consisted of masters and senior boys at the school - the first such school to enrol under the Volunteers Act, in 1860.

**Rossie Reformatory School Brass Band** (near Lunan, Angus)

Founded in October 1872. Still active in 1900. Conductor Mr Carnegie (master shoemaker) in 1872, Mr Taylor in 1880, Mr Edwards in 1894

**Royal Albert Asylum Brass Band** (Lancaster, Lancashire)

Active from 1871 to the 1900s. Conductor C. Godfrey Jones in 1872-1876, with 20 instrumentalists, when it gave a concert including "Der Freischutz". Conductor B. Vere in 1887. The hospital opened in 1870 and in 1884 the hospital was renamed as the "Royal Albert Asylum for the Care, Education and Training of Idiots, Imbeciles and Weak-Minded children and Young Persons of the Northern Counties". The band was still active in 1910.

**Royal Albert Orphan Asylum Brass Band** (Camberley, Surrey)

Active in the 1870s to the 1900s, conductor Mr Patey in 1885, W.A. Allen in 1903. The orphanage was opened in 1864 in an unfinished mansion, Collingwood Court, in 200 acres near Bagshot. In 1876 the band performed at a dinner with the Lord Mayor of London at which £2,500 is raised for the school (£200,000 at current value).



**Royal Asylum of St Anne's Society Brass Band** (Redhill, Surrey)

Founded in 1890, conductor Sergeant Taylor. Still active in 1903. The Asylum was the school of the Royal St Anne's Society, located near the Junction at Redhill. Conductor W.T. Ayres in 1895

**Royal Caledonian Asylum Brass Band** (Islington, Middlesex)

Active in 1851. Still active in 1886, conductor Albert Mansfield. A boys' brass band from the schools associated with the Asylum. A concert in August 1879 was: The Garb of Auld Gaul, Melodies of Scotland, The Circassian, Don Juan, Traviata selection, Green Grow the Rushes O, La Violetta, and Louis XIII.

**Royal Hibernian School Brass Band** (Dublin)

Active in 1853 to 1884. Conductor Lieutenant-Colonel Columb in 1853, Mr Bailey in 1884. Consisted of boys at the Royal Hibernian Military School

**Royal Naval Asylum Brass Band** (Greenwich, Kent)

Active in 1872. Still active in 1884

**Runcorn National School Brass Band** (Cheshire)

Active in 1873 to 1879

**Rushden National School Brass Band** (Northamptonshire)

Active from 1875 to the 1890s. The band in 1889 consisted of: George Abbott (monstre bass), J. Penness (soprano), George Thacker (cornet), Q. Whitworth (cornet), S. Hullett (cornet), W. Chambers, Jesse Panter (cornet), F. Stapleton (cornet), H. Hills (cornet), E. Whitworth (cornet), H. Wilmer (cornet), P. James (horn), J. Bailey (horn), S. Pratt (horn), W. Bridgeford (baritone), H. Bird (baritone), W. Bird (euphonium), B. Dickens (euphonium), R. Clark (trombone), J. Abbott (trombone), W. Pendred (trombone), B. Dickens, W. Carvell (bombardon), E. Clark (bombardon) and J. Bull (Bb Bass)

**Russell Hill School Brass Band** (Purley, Surrey)

Active in 1905, bandmaster Sergeant Emberson. This was the Warehousemen, Clerks and Drapers' Schools in Russell Hill Road. The school was originally established for the children of 'deceased and necessitous warehousemen and commercial clerks'

**Ryde Upper Grade School Brass Band** (Hampshire (Isle of Wight))

Founded in March 1895, with nearly 20 instrumentalists, conductor R.A. Cooke, bandmaster C.D. Crisp. The band in December 1896 were: J.B. Coombes, H.F. Lewis, F. Morris, C.G. Attrill (1st cornets); E. Shutte, Mr Williams (2nd cornet); D.C. Woods (3rd cornet); Mr Walker, W.E. Reid (saxhorns), A. Tansom, R. Whittle (baritones); D.B. Russell (euphonium); M. King, P.G. Cocks (trombones); H. Spencer (bass drum); E. Ward (side drum); R. Webb (triangle); C.D. Crisp, W.J. Jones (bombardons). The boys in the band in February 1898 were: J.B. Coombes, H.F. Lewis, F. Morris (1st cornets); B.B. Guy (2nd cornet); H. Webb, H. Thearle (3rd cornets); D.C. Woods, G.P. Makepeace (saxhorns), C.J.M. Williams, W.O. Morris (baritones); D.B. Russell (euphonium); F. Walker, P.G. Cocks (trombones); F.G. Vyver (bass drum); F.J. Leach (side drum); C.D. Crisp, C.E. Goodall (bombardons).

**Salford Cottage Homes Band** (Lancashire)

On a picture of the band (probably from the early 1900s) are the lines: "Here at the Homes, there is a band. And the way they play is something grand; There's many a band, that I can tell, Older and bigger, don't play so well."

**Salford Workhouse Brass Band** (Lancashire)

Active in the late 1870s. Still active in 1893. Conductor Mr Allen in 1891

**Saltersford School Cadet Corps Brass Band** (Holmes Chapel, Cheshire)

Active in the 1920s. The school was originally located in Sandbach, known as the Bradwall Reformatory, but it opened an annexe at Saltersford Hall, which eventually became the main site, all operations being transferred from Sandbach.

**Salthill Industrial School Brass Band** (Galway)

Active in 1896. Still active in 1904. St Joseph's Industrial School, Salthill was founded in 1871.

**Saltley Reformatory School Brass Band** (Warwickshire)

Founded in 1894

**Sandbach National School Brass Band** (Cheshire)

Active in 1879, 1880, conductor Abraham Booth

**Semer Union Workhouse Brass Band** (Suffolk)

Active in 1852. The band consisted of 10 boys

**Shadwell Industrial School Brass Band** (Yorkshire - West Riding))

Active in 1885, with 20 performers. Still active in 1902

**Shawbury Industrial School Band** (Shustoke, Warwickshire)

Founded in 1900. Still active in 1911. Used to march through the country lanes and into Fillongley village to Church on a Sunday. The Shustoke Industrial School opened in 1868, later changing its name to Shawbury Industrial School.



**Shenley Fields Cottage Homes Band** (Birmingham, Warwickshire)

Active in 1915 - but it lost its whole bass section due to enlistment.

**Shirley Schools Brass Band** (Surrey)

Active from the early 1900s to the 1930s. Conductor J. Machell in 1904. In 1903, the St Olave Union erected a large children's cottage home "village" at Wickham Road, Shirley, also known as Shirley Schools. There were 38 children's cottages,

making Shirley one of the largest cottage homes sites ever erected. Some children stayed there for just a few weeks, some for up to fifteen years. Conductor L. Evans-Parr in 1926. Also known as St Olave's Poor Law School Band

**Shoeburyness R.A. School of Gunnery Band** (Essex)

Active from 1880 to the 1900s. Conductor G.P Stewart in 1883. A concert in July 1883 was: March (Basquit), Tancredi (Rossini), Wein Weit und Gessang (Strass), Rose d'amour (Bleger), Kutsohke (Stasny), The Grand Duchess (Offenbach), Soldaten Lieder (Gung'l), Flossie (Smith).

**Sholing School Boys' Brass Band** (Hampshire)

Active in 1902, 40 players in khaki uniforms

**Shoreditch Industrial School Brass Band** (Brentwood, Essex)

Active in 1860 through to 1904. Also known as Brentwood Industrial School Brass Band. Conductor Mr Phemister, bandmaster Mr Skipsey in 1860. The school was taken over from the Shoreditch Board of Guardians in 1877, becoming the Brentwood District school, and was based on the north side of Brentwood Hill. Conductor A. Byford in 1878-1895. 22 players in 1895. In 1885 the Brentwood School District was dissolved, the Hackney Union taking it over (when the band was also known as the Hackney Union Schools Brass Band). Consisted of 28 boys in 1886, earning £2 to £5 every summer Saturday afternoon by performing at fetes. The band was still active in 1900, conductor G.W. Doughty. In 1898 a report on the school included: "There is an excellent and well-taught band - 34 boys are in the 1st band, and 28 in the 2nd. During the year 1897, 16 outside engagements were successfully carried out by it. The practising band-room is of insufficient size, but the neighbouring gymnasium is, when available, used in its stead." A concert at Hernewood in August 1885 was: Hosanna (Steensbrugen), Immer Wieder (Vandervell), Sooner or Later (J. Meissler), Pirates of Penzance (Sullivan), Black and Tan (C. Lowthian), Fox Hunters (Gladman), Salutation (E. Villiers), Stephanie (A. Czibulka), The Village Blacksmith (Weiss) [euphonium solo by J. Allen], Bohemian Girl (A. McAra), See-Saw (G. Crowe), Silver Trumpets (Vivani), and Leipste (Labitsky).

**Sibford Adult School Temperance Brass Band** (Sibford Gower, Oxfordshire)

Active in 1901 to 1911. Conductor William Dixon in 1903

**Sileby Adult School Brass Band** (Leicestershire)

Won a contest at Humberstone Hall in 1902

**Skene Square Industrial School Brass Band** (Aberdeen, Aberdeenshire)

Active in 1877, 1878

**Slatefield Industrial School Brass Band** (Glasgow, Lanarkshire)

Founded in the late 1880s. Still active in 1905. The school was established in 1867 for Roman Catholic Boys and survived to the end of WW2.

**Slip End Adult School Brass Band** (Bedfordshire)

Formed in 1906 and played around the local villages in order to raise funds to build the new Slip End institute. Mr B. Baker of the Salvation Army taught the bandsmen to play their instruments which they bought themselves. He taught them to read music and they practiced in the village hall on Sundays and Thursdays, and in Phyllis Betts' barn in Front Street before the hall was built. Her brother Fred was a natural musician. He played Soprano Cornet and taught the cornet players. The members of the band were: Cornets: Fred Betts, the Evans

brothers, Hedley Toyer, Ernest Morris, Sidney (Sam) Arnold, Trombones: Albert and Walter Gutteridge, Bass: Alf (Punch) Norris, George W. Edwards, Euphonium: Jack Norris, between Bass & Euphonium: Ebenezer Bonnick, Sam Arnold, who introduced some "fiddly bits" during practice session, whereupon Mr Baker stopped the band immediately and admonished him, "No composing if you please Sam!". The band disintegrated at the onset of the 1914 -18 war.

**Smyllum Orphanage Brass Band** (Lanark, Lanarkshire)

Active in 1870. Still active in 1905. Based at St Mary's Roman Catholic Orphanage in Lanark, all boys under the age of 14. Conductor J. Thompson in 1905

**Smyllum School Brass Band** (Lanark, Lanarkshire)

A band formed at the Smyllum Orphanage School in the 1940s/50s. The band was still active in the early 1960s, and the school probably closed in the 1980s.

**Soho Street Ragged Schools Brass Band** (Liverpool, Lancashire)

Active in 1856 to 1869. The school was established in 1849

**Somerset Industrial School Brass Band** (Bath, Somerset)

Active in 1885 through to 1920. The school was founded in 1832, its aim being to "to reclaim abandoned boys, and to rescue those whose unhappy circumstances would inevitably lead them to crime and profligacy". It was located in Lower Bristol Road, Bath. Conductor G. Sharp in 1902, Mr Godden in 1913. Still active in 1919

**South Dublin Union Workhouse Brass Band** (Dublin)

Active in 1870. Conductor Peter Sullivan in 1876.

**South Lambeth Road School Brass Band** (Lambeth, Surrey)

Active in 1878. Conductor Mr Benn in 1879

**South Metropolitan District School Brass Band** (Sutton, Surrey)

Active from the early 1870s to the early 1900s. Conductor Mr Browne in 1885. The school was active at two sites in Banstead Road and Brighton Road

**South Metropolitan District School Brass Band** (Witham, Essex)

Active in 1884, with 22 players. Disbanded in June 1900. Conductor M. Muskett in 1890-1900. The school at Witham had been opened in 1882 in the premises of the former Witham Union workhouse.

**South Shields Workhouse Brass Band** (Harton, Durham)

Active in 1877 to 1903. Conductor John Chapman in 1877-1882, Mr Craik in 1883, John Dennison in 1890-1900, W. Binnie in 1903. The band consisted of juveniles from the workhouse which was located at Harton. Also known as Harton Workhouse Brass Band

**South Wales and Monmouthshire Truant Industrial School Brass Band** (Treharris, Glamorgan)

Founded in 1907 with 18 performers

**Southall Schools Brass Band** (Middlesex)

Active from the mid-1860s until the school closed in 1914. Conductor J. Dykes in 1904, Mr Wheatley in 1906. The school was set up as St Marylebone School in South Road, as an adjunct to the St Marylebone Workhouse. The children slept in dormitories of 40, and around 390 were housed there. The band uniform in the 1900s was dark blue with red braid and a pill box hat.



**Southampton Air Training Corps Band** (Hampshire)

Formed just before World War 2. and developed into a 'mature' band when the young cadets became too old for the Corps. After the War the Band's membership was increased and enhanced by returning ex-servicemen, and became known as the Bitterne and West End Band, as its location base had changed to the eastern part of the city. Competed in the 2nd Annual Open Brass Band Festival at the Wesley Central Hall, Portsmouth (organised by the Portsmouth City Fire Brigade Prize Band), on Saturday 16th September 1950. It changed its name again in the early 1970s to Solent Brass. In 1993 Solent Brass was employed to provide music for a scene in the film *The Browning Version*, starring Albert Finney (released 1994), resulting in a mention in the film's credits. As membership declined in the 1990s, the band amalgamated with the Southampton Central Band in 1998 to form Ocean Brass.

**St Aidan's Nautical Training School Band** (Farnworth, Lancashire)

The school was established in 1905 at Norland Lane, Farnworth, near Widnes. The band was active through to the 1920s. The school was set up by the Liverpool Catholic Training Schools Association (originally known as the Liverpool Catholic Reformatory Association) as the land-based successor to the Training Ship *Clarence* which had been destroyed by fire in 1899.

**St Anne's Adult School Brass Band** (Bristol, Gloucestershire)

Active in 1914

**St Anthony's Schools Brass Band** (Dublin)

Active in 1879, conductor F.J. Ward

**St Augustine's Home for Boys Band** (Sevenoaks, Kent)

Active in the 1930s. The home was established by the Waifs and Strays Society in 1921 at St John's Road, Sevenoaks. By 1932, the home had become a 'Special Training Home' for older boys who wished to become military bandsmen. The home's band proved very popular and often performed at local events. The home closed in 1938.

**St Charles' School Band** (Brentwood, Essex)

Active in the 1900s to 1930s. St Charles' School (or Orphanage) for Roman Catholic Boys was established around 1884. The band competed at the Crystal Palace in 1907

**St Columba's Industrial School Brass Band** (Killybegs, Donegal)

Active in 1899. The school opened in 1896 and was operational through to 1940

### **St Edward's Orphanage Band** (Liverpool, Lancashire)

Active in the 1910s to the 1950s. The orphanage opened in 1906 at Broadgreen and functioned until 1956 and was famed for its lively band and successful football team. A song about the St Edwards Orphanage Band was written by Tony Flanagan as a tribute to his father who was in the band. The band would follow the May processions around Liverpool and when the orphan lads would pass St Mary's of the Angels the crowd would all give them a big cheer. The lads in the band all left St Edwards orphanage at sixteen and joined the army together - his father watched most of the band die on a green field in France, and he would say that those lads were forgotten the second they hit the ground, with family to mourn them - so every Christmas his father would raise his glass and toast the boys of St Edwards boys band. Peter Basil Torres was a band member, aged 12, in 1950



### **St George's Industrial School Brass Band** (Liverpool, Lancashire)

Active from 1871 (26 boys in the band). Still active in the 1900s. Conductor Mr Edwards in 1871, Joseph Leadbetter in 1903. The school was located on West Derby Road and was founded in 1851, moving to West Derby Road in 1863.

### **St Helier Girls School Brass Band** (Isle of Jersey)

Active in the 1970s

### **St James' Industrial School Boys' Brass Band** (Westminster, Middlesex)

Active in 1863, 1864

### **St James' Parish Schools Brass Band** (Heywood, Lancashire)

Active in 1885. Still active in 1886. Members of the band in 1885 included H. Taylor, J. Drinkwater, C. Barker, W. Davenport, J. Smith, H. Ogden

### **St James' School Brass Band** (Denton, Lancashire)

Active in 1886

### **St John the Baptist School Brass Band** (Woking, Surrey)

Active in the 1920s

**St John's Home Brass Band** (Ipswich, Suffolk)

Founded in early 1884. Still active in 1905. The children's home was based in Bloomfeld Street, Ipswich, opening in 1871 as a workhouse school for boys and girls. Conductor J.B. Leahy in 1884-1888, J. Forrest in 1904, A. Suckling in 1906

**St John's Industrial School Brass Band** (Walthamstow, Essex)

St John's Industrial School for Roman Catholic Boys was opened in 1870. The brass band was active in 1909, when it had 43 members. The school closed in 1932.

**St Joseph's Blind Asylum Brass Band** (Dublin)

Active in 1884. Still active in 1893

**St Joseph's Industrial School Brass Band** (Manchester, Lancashire)

Active in 1875 through to 1914. Based at the school in Richmond Grove, which was established in 1871 to hold 350 boys.

**St Joseph's Industrial School Brass Band** (Tralee, Kerry)

Active in 1887. Conductor J.J. Godsil in 1897. Still active in 1900. A concert in July 1897 was: Dauntless (Pettce), Belgravia (Lawton), Scotch Melodies (Hartman), XYZ (Round), Venetia (Lothian), Chiming Bells (Metcalf), Gems of Ireland (Smith), Irish Emigrant (Barker), Maritana (Wallace), Star of Love (Rimmer), Snow Bells (Smith), Irish Airs (Hartman), Derringham (Scholes), Daisy (Lamothe)

**St Joseph's Industrial School Brass Band** (Clonmel, Tipperary)

Active in 1896

**St Joseph's Orphan Schools Brass Band** (Manchester, Lancashire)

Active in 1879, conductor Mr McKerney, consisting of 30 performers aged 9 to 15

**St Joseph's Orphanage Band** (Orpington, Kent)

Active in the 1890s to the 1930s. Conductor T. Burt in 1900. The orphanage was located in Sevenoaks Road, and was established in 1892, housing 200 boys. Most of the boys (and girls who were later also housed) were eventually sent overseas to Canada, being adopted by Irish-Canadian Catholic farming families



**St Joseph's Orphanage Boys' Brass Band** (Limerick, Limerick)

Active in 1893. Still active in 1904

**St Mary Magdalen School Brass Band** (Enfield Town, Middlesex)

Active in 1890, consisting of 20 children

**St Mary's Catholic School Brass Band** (Dundee, Angus)

Formed in 1885, gave its first performance in April of that year, bandmaster W.G. Jarvis. Still active in 1896. Conductor Mr Cassidy in 1888.

**St Mary's Industrial School Boys' Brass Band** (Bishopbriggs, Lanarkshire)

Active in 1899, performing at Bishopbriggs. Still active in 1900. The St Mary's Roman Catholic Orphanage and Industrial School for Boys opened in 1833 and was located in Abercromby Street in Glasgow. The boys' school moved to new premises at Bishopbriggs in 1905.

**St Mary's Orphanage Brass Band** (Hounslow, Middlesex)

Active in 1873

**St Mary's Orphanage Brass Band** (Southall, Middlesex)

Active in the 1930s/40s. It was located in the old Middlesex Regiment Barracks, formerly at the end of Wentworth Rd Southall, which became a Catholic Orphanage School. The Children from the Spanish Civil War were housed there apparently, and the MD of the Band was Mr. Dunn, father of Colonel Vivian Dunn, MD of the Royal Marine School of Music.

**St Mary's Parochial Schools Brass Band** (Islington, Middlesex)

Active in 1900

**St Mary's School Brass Band** (Sandbach, Cheshire)

Active in 1881

**St Matthew's School Brass Band** (Preston, Lancashire)

Active in 1886

**St Michael and St John's Catholic School Brass Band** (Blackburn, Lancashire)

Active in 1863 to 1876

**St Nicholas Industrial School Brass Band** (East Ham, Essex)

Active in 1898 through to the 1910s. Conductor T. Burt in 1904. The school was located at Whitt Road, Manor Park, East Ham. Philip McGrath, the bandmaster in 1908, absconded in September that year with a number of the school's musical instruments, value £40, he was arrested in Luton, and explained he had got into trouble with a woman who was worrying him for money. He was sent to gaol for six months' hard labour. (He was later charged, in 1910, with stealing a portmanteau and a trunk from Waterloo Station).

**St Patrick's Boys' School Silver Band** (Milltown, County Antrim)

Active in 1949

**St Patrick's Industrial School Brass Band** (Belfast, County Antrim)

Active in 1876. Still active in 1881

**St Paul's Home Brass Band** (Coleshill, Warwickshire)

Active in the 1890s. The home was established in 1884 by the Roman Catholic Diocese of Birmingham. Father Hudson was the local priest.



**St Peter's National School Brass Band**

Active in the 1890s. Not known which of the several St Peter's National Schools this belonged to.

**St Swithun's Industrial Home Brass Band** (Winchester, Hampshire)

Founded in 1886. Still active in 1895. Conductor Mr Watson in 1890. A "juvenile" band, it performed at Twford and Fareham a few times.

**St Thomas' Home Brass Band** (Preston, Lancashire)

Active in the 1900s to 1920s. The home was established in 1901 as an Industrial School for Roman Catholic Boys



**St Vincent's Orphanage Brass Band** (Glasnevin, Dublin)

Active in 1867. Still active in 1898. Based at the St Vincent de Paul Orphanage

**St Vincent's Orphanage Brass Band** (Fullwood, Lancashire)

Active in 1899. Still active in 1937. Based at the St Vincent's Orphanage.

**St Vincent's School Brass Band** (Dartford, Kent)

Active in the 1900s to 1920s. St Vincent's Industrial School was opened in 1878.

**St Wilfred's School Brass Band** (Ribchester, Lancashire)

Founded in February 1872, with 13 young men, conductor William Ellis

**St Wilfrid's Children's Home Band** (Shoreham-by-Sea, Sussex)

Founded in 1905. This was a boys' drum and fife band. The home was run by the Steyning Board of Guardians, set up when the Shoreham Workhouse moved to a new site in the 1890s.

**Stafford County Asylum Band** (Staffordshire)

Active in the 1900s

**Stafford Union Workhouse Juvenile Brass Band** (Staffordshire)

Active in 1862, 1863

**Stapleton Workhouse Brass Band** (Gloucestershire)

Active in 1859 to 1870. Some 300 of the children from the workhouse had an outing, preceded by their brass band, which was much admired. Also known as the Stapleton Union Brass Band

**Stepney Causeway Boys' Home Brass Band** (Middlesex)

Active in 1876 to 1902. Conductor E.D. Chatterton in 1878, Mr Davis in 1901. The band was based at the Home for Working and Destitute Lads, Stepney Causeway. Also known as Dr Barnardo's Homes Brass Band. Consisted of 40 boys in 1889

**Stepney Union School Brass Band** (Middlesex)

Formed in September 1858. Active in 1860, by which time 23 of the boy musicians had passed through the band to join regimental bands. The school was based at Church Lane, Limehouse.

**Stockport Industrial School Brass Band** (Cheshire)

Active in the 1870s to the 1900s. The school was opened in 1854, the band being formed around 1876, after a move to new premises in the town - instruments costing £62. After a further move in 1898 to a new building in Offerton, it was also known as the Offerton Industrial School



**Stockport Ragged School Brass Band** (Cheshire)

*See: Stockport Industrial School Brass Band*

**Stockton Adult School Brass Band** (Stockton-on-Tees, Durham)

Founded in 1882. Still active in 1889. Conductor Mr Alderson in 1884

**Stoke Workhouse Brass Band** (Stoke-on-Trent, Staffordshire)

Founded in late 1880. The bandmaster was advertised for in August 1880, to train a band of around 20 boys, at a salary of 15 shillings per week. Active to the early 1890s. Conductor George Dawson until his death in 1887 (he was also a trombone player).

**Strand Union Schools Band** (Upper Edmonton, Middlesex)

Active from 1870 to the mid-1900s. Conductor W. Binnie in 1882-1900, L.P. Connor in 1902. The school was opened by the Strand Board of Guardians at Millfield House, Silver Street, Edmonton, accomodation 400 children. Participation in the school band gave some of the boys the possibility of a future career as military musicians.

**Stranraer Reformatory Brass Band** (Wigtownshire)

Active in 1892, bandmaster Mr Mackinstry. Still active in 1893

**Styal Cottage Homes Brass Band** (Cheshire)

Active in 1900, conductor C. Courbard. Still active in 1903. The home was opened in 1898 by the Chorlton Board of Guardians to house destitute children. It housed 450 children in the early 1900s

**Sunderland Boys Industrial School Brass Band** (Durham)

Active from the 1880s. Still active in 1904. Bandmaster W.W. Lax in 1894, S.L. Lax in 1899-1903. The Sunderland Industrial and Ragged School was established in around 1850 on Silver Street, Sunderland. The school closed in 1924.

**Sunderland Orphan Asylum Brass Band (1)** (Durham)

Active in 1880. Folded some time before 1885. The asylum was located on Sunderland Moor, and the band was tutored by Edward Sanderson. The boys gave regular concerts on the moor.

**Sunderland Orphan Asylum Brass Band (2)** (Durham)

Founded in 1885 after a fund was been started to "provide the boys of the Orphan Asylum with a brass band" - and £3 12s had been donated. It is not known what happened to the earlier band, or its instruments.

**Sunderland School of Music Brass Band** (Durham)

Founded in 1885

**Sunderland Workhouse Brass Band** (Durham)

Founded in 1867 as a juvenile brass band with 13 members, conductor Mr Ticehurst. Still active in 1886. Conductor W. Lax in 1876-1885

**Surrey Industrial School for Boys Band** (Mayford, Surrey)

The home opened in 1887, with accommodation for 180 boys. The band was active from 1888. There were 24 players in the band in 1892.

**Sussex County Asylum Brass Band** (Haywards Heath, Sussex)

Active in 1870

**Sutton Poor Law School Brass Band** (Surrey)

Active in 1874, when it had 70 boys, 30 of whom were learners. Conductor J.A. Brown in 1885-1900. The school was under the management of the South Metropolitan School District

**Swansea Truant Industrial School Brass Band** (Glamorgan)

Founded in 1907

**Swinton Industrial School Brass Band** (Lancashire)

Active in 1855, conductor Mr Connally. The school was established in 1845, on Partington Lane, for pauper children. The band was still active around 1900

**Tennal Approved School Brass Band** (Harborne, Staffordshire)

Active in 1948

**Tetbury Collegiate School Brass Band** (Gloucestershire)

Active in 1878

**Toddington Wesleyan Day Schools' Brass Band** (Bedfordshire)

Active in 1905

**Tom Maley's School Boys' Brass Band** (Bellshill, Lanarkshire)

Active in 1899

**Toxteth Park Industrial and Ragged Schools' Brass Band** (Lancashire)

Active in 1876



**Training Ship Akbar Band** (Heswall, Cheshire)

Opened as a Reformatory School Ship in 1856, accommodating 200 boys, aged 14 to 16, from any locality, who had been committed to detention for a period of at least five years. The band was active by 1859. Still active in 1906. The ship was scrapped in 1907 and replaced by an on-land school. See also: Akbar Nautical School Band

**Training Ship Arethusa Brass Band** (Greenhithe, Kent)

Active in 1876. Bandmaster Mr Harper in 1878, William Armstrong in 1889-1900. The ship was opened in 1874. Originally, Arethusa boys were known on board only by their number - when they met up in later life, none of them knew each others' names. This custom continued until 1927, after which time boys were referred to by their surnames

**Training Ship Boscawen Brass Band** (Portland, Dorset)

Active in 1863, conductor H. Tiller

**Training Ship Caledonia Brass Band** (Queensferry, West Lothian)

Active in 1892, conductor Mr Jarvis. The ship was moored at Queensferry as a training establishment in September 1891. The ship was built in 1810 as H.M.S. Impregnable, becoming a training ship at Devonport in 1862, renamed H.M.S. Kent in 1888 before moving to Queensferry.

**Training Ship Chichester Brass Band** (Greenhithe, Kent)

Active in 1877. Still active in 1898. The ship was opened in 1866, and the vessel itself was replaced by an 83 foot twin-masted schooner, which took over the Chichester name, holding over 200 boys (protestants only).

**Training Ship Clio Brass Band** (Bangor, Caernarfonshire)

Founded in 1878, active through to the 1900s. Conductor Mr Jackson in 1879, Mr McElwee in 1904. On special occasions the band put on public concerts and sometimes, on a Sunday, Bangor residents willing to donate a shilling were welcomed aboard the Clio for a religious service followed by afternoon tea and a concert performed by the boys. The ship was abandoned and scrapped after WW1.

**Training Ship Cornwall Brass Band** (Purfleet, Essex)

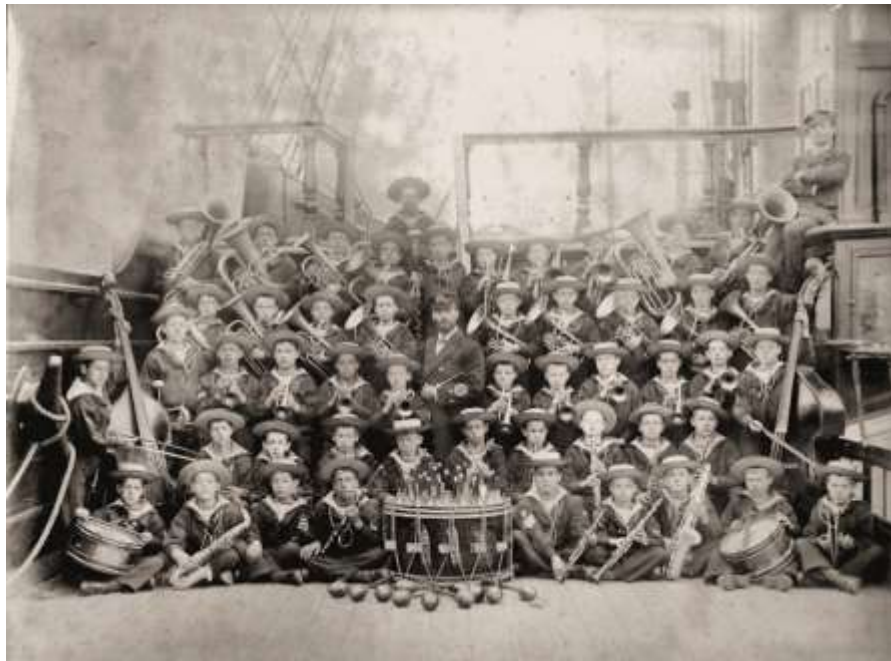
Active from 1876 to 1910

**Training Ship Cumberland Brass Band** (Helensburgh, Dunbartonshire)

Active from 1870 until the ship was replaced by H.M.S. Empress in 1889. 30 players in 1870, conducted by Mr Miller. Conductor Howard H. Smith in 1888. The band inaugurated the bandstand season at Rothesay in May 1875, conducted by Howard Smith

### **Training Ship Empress Brass Band (Helensburgh, Dunbartonshire)**

Active in the 1890s through to WW1. 60 performers in 1898. Bandmaster Harry Wadsworth at some point. Training Ship Empress was operated at Helensburgh, on the Clyde, by the Clyde Industrial Training Ship Association. The Empress replaced an earlier vessel, the Cumberland, destroyed by fire in 1889. The vessel, an Industrial Training establishment, trained boys in all aspects of seamanship and many went on to join one of the naval services. The "Empress" was a wooden battleship originally known as H.M.S. Revenge and served as a training vessel until being sold off in 1923. The 3318-ton Revenge, built in 1859, was 245 feet long and had a complement of 860 men.



### **Training Ship Exmouth Brass Band (Grays, Essex)**

Active in 1879 through to the early 1900s. Bandmaster Mr Crompton in 1880, when the band numbered 50 boys. The Training Ship Exmouth was established in 1877, replaced the Goliath, which had been destroyed by fire two years earlier. The Exmouth was moored on the Thames off Grays in Essex and was managed by the Metropolitan Asylums Board. The ship was an old wooden two-decker line-of-battleship, built in 1854.



### **Training Ship Formidable Brass Band (Portishead, Somerset)**

Founded in 1870. Still active in 1900. Conductor Mr Watkins in 1883, L. R. Squire in 1893

### **Training Ship Ganges Brass Band (Harwich, Essex)**

Active in 1899. HMS Ganges was established as a boys' training establishment in 1865, and was based aboard a number of hulks before moving ashore at Shotley in 1905

### **Training Ship Gibraltar Brass Band (Belfast, County Antrim)**

Active in 1876. Still active in 1898. Conductor G. Weir in 1896. The Industrial School Ship Gibraltar was established in 1872, moored at Belfast Lough, at the mouth of the River Lagan. The ship was renamed "Grampian" in 1889, finally being decommissioned and broken up in 1899. The band was known as the Grampian Brass Band in the 1890s. A concert at Whiteabbey in August 1895 was: Bellemonte (Jabb), The Ship I Love (Bonheur), Comin' Thro' the Rye (Hare), Tip Toe (Norman), Massa's in the Cold, Cold Ground (Newton), Merry Men and Maids

(Hume), Come Back Soon (Bonheur), Le Sentinel (Hume), Country, Home and Queen (Hare)

**Training Ship Goliath Brass Band** (Grays, Essex)

Active in 1875. See also: Training Ship Exmouth Brass Band

**Training Ship Implacable Brass Band** (Devonport, Devon)

Active in 1868

**Training Ship Impregnable Brass Band** (Devonport, Devon)

Active in 1891. H.M.S. Impregnable was a Royal Navy training establishment started at Devonport in 1862, and active until 1929. Housed in H.M.S. Impregnable originally, located on the Hamoaze, it was replaced by H.M.S. Howe (renamed H.M.S. Impregnable), in 1885.

**Training Ship Indefatigable Brass Band** (New Ferry, Cheshire)

Active from 1871. Still active in 1903. In 1871 consisted of 27 boys, conducted by Mr Ormesby. The ship was moored on the River Mersey, off New Ferry, Cheshire, established in 1865 'to receive the sons and orphans of sailors, and other poor and destitute boys, and train them for the sea.'



**Training Ship Lion Band** (Devonport, Devon)

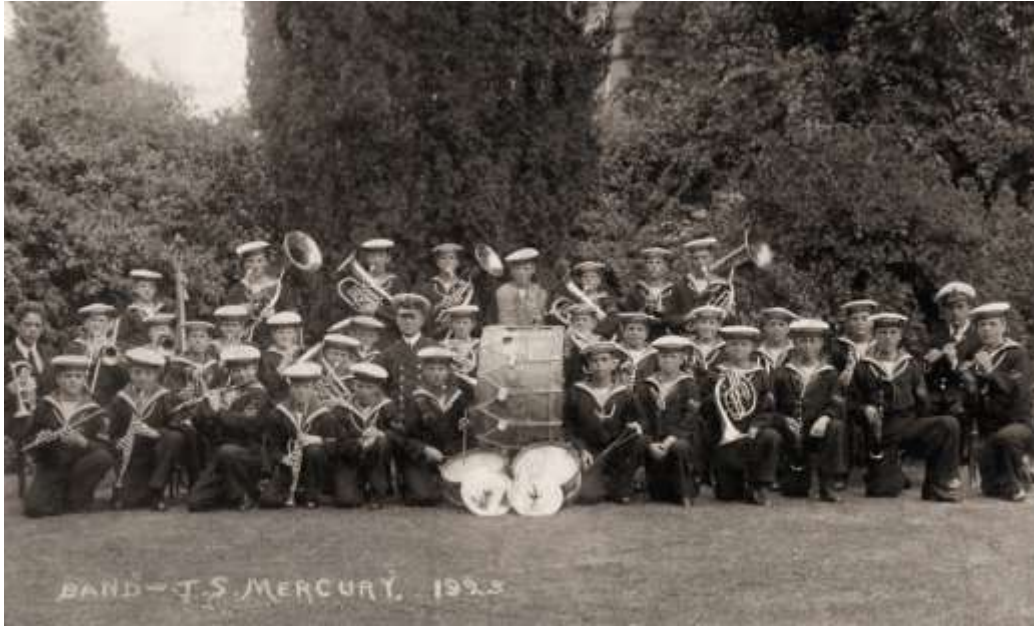
Active in 1896. H.M.S. Lion was a training ship based in Devonport

**Training Ship Mars Brass Band** (Newport-on-Tay, Fife)

Founded in 1871. Still active in 1904. Conductor William Douglas Davidson in 1871, 1890, Mar Barnett in 1873, J.E. Butler in 1881, D.C. Strachan in 1904

**Training Ship Mercury Brass Band** (Binstead, Hampshire (Isle of Wight))

Active in 1890. Still active in 1908 The ship was moored off Binstead, housing 150 boys between 12 and 15 years of age. Originally established in 1885 by London philanthropist Charles Hoare, the school moved to the River Hamble near Southampton in 1892, to shore-based accommodation. The "training ship" was still in operation in the 1960s



**Training Ship Mount Edgcumbe Band** (Saltash, Cornwall)

Founded in 1881. Active into the 1900s. The ship was established in 1877 as an "Industrial Training Ship for Homeless and Destitute Boys", housing up to 250 boys aged 12 to 16. It continued as such until 1920

**Training Ship Shaftesbury Band** (Grays, Essex)

Active in 1881. Still active in 1899. The former P&O vessel, "Nubia", was renamed Shaftesbury and moored on the River Thames, off Grays, and opened as an Industrial School Ship in 1878, holding some 400 boys. The ship closed in 1905.

**Training Ship Southampton Band** (Hull, Yorkshire - East Riding))

Founded in 1869, with 26 boys, bandmaster Mr Tidswell. Still active in 1904, bandmaster Mr Pitts

**Training Ship St Vincent Brass Band** (Gosport, Hampshire)

Active in 1869. H.M.S. St Vincent was established as a training ship in 1862

**Training Ship Wellesley Band** (Tynemouth, Northumberland)

Reformatory School for boys. They made their first public appearance in April 1872, having been tutored by J.H. Amers. Leader James Mosely in 1876. The band closed with the school in 1914.



**Tralee Industrial School Brass Band** (Kerry)

Active in 1886

**Trinity School Brass Band** (Carlisle, Cumberland)

Active in 1860

**Twickenham Boys' Home Brass Band** (Middlesex)

Active in 1893. Still active in 1910. This was a refuge school set up in 1878 by the National Refuges for Homeless and Destitute children, one of the original Shaftesbury Homes for boys. The home was located in Fortescue House, London Road.

**Tyne Dock Adult School Brass Band** (Durham)

Active in 1905

**Tynemouth Workhouse Brass Band** (Northumberland)

Founded in 1881, conductor John Moseley. Still active in 1909. Conductor Edward Hogarth in 1893, W. Sharp in 1902.

**Upper Rhondda Comprehensive School Brass Band** (Treorchy, Glamorgan)

Active in the 1960s to 1980s

**Upton Industrial School Brass Band** (near Innishannon, Cork)

Active in 1890, conductor Alfred Nesson. Still active in 1896

**Upton Park Poor Law School Band** (Essex)

Active in 1860 as St George's Industrial School Brass Band, conductor Mr Wilkinson (of the Naval School, Greenwich). The school was established as St George in the East Union School, Gipsy Lane (now Green Street). Active in the 1890s and 1900s as Upton Park Poor Law School Band. Conductor J. Murphy in 1900. Also known as Plashet Industrial School, it housed 150 boys and 120 girls

**Walcot Industrial School Brass Band** (Somerset)

Active in 1888

**Wandsworth Common Patriotic School Brass Band** (Surrey)

Active in 1877

**Wargrave Industrial School Brass Band** (Berkshire)

Active from 1875 to the early 1900s. Conductor Mr Bennett in 1886, Mr Griffiths in 1891, L.P. Connor in 1897-1900. The Reading and Wokingham District School for pauper children was set up in a former workhouse building at Wargrave in the 1850s. The school closed in the early 1900s.

**Warren Farm Schools Band** (Woodingdean, Sussex)

Active from 1878 to the 1900s, conductor J.C. Fly in the early 1900s, Lewis Wallace in 1906. The school was opened in 1862, in Warren Road, with the first inmates (75 boys and 65 girls) marching to the new premises from the Dyke Road Workhouse. Music played a big part of the children's education and many of them began their careers with army or navy bands. John Parkes was "a well behaved boy playing the Baritone [horn] very well", he joined the Band of Munster Fusiliers in Colchester in 1891 whilst Bertie Nightingale "shewed good ability on the French Horn" and joined the Band of the 2nd Battalion Duke of Cornwall in Devon in 1901.

**Warrington Blue Coat School Boys Brass Band** (Lancashire)

Active in 1847 through to the 1900s. Conductor Thomas Armstrong in 1905. The school was founded in 1665 to "apprentice annually five poore boys to some handicraft trades". In the mid-1850s it was catering to legitimate children of poor parents in the locality. The original school was in Bluecoat Street, later moving to Chester Road.

**Warrington Workhouse Brass Band** (Lancashire)

Founded in 1870. Consisting of youths from the workhouse in Lovely Lane. Later known as Warrington Union Schools Brass Band. Bandmaster Mr Griffiths in the 1880s and 1890s, Robert Bonner in 1904. In the 1880s the children from the workhouse moved to the new Padgate Cottage Homes in Green Lane. The band was also known as Warrington Cottage Homes Band and Padgate Farm School Band.

**Warwickshire Reformatory for Boys Brass Band** (Weston under Wetherley, Warwickshire)

Founded in 1890. Still active in 1924. Conductor W.E. Pengelly in 1891, Mr Boswell in 1908, Mr Savin in 1924. Renamed Warwick Training School Cadet Band in 1920, then Weston Industrial School Band in 1923

**Watford Industrial School Brass Band** (Hertfordshire)

Active in 1878

**Watts Naval School Boys Brass Band** (North Elmham, Norfolk)

Founded in 1904, with 24 boys. Bandmaster A.C. Tesh in 1905, F.J. Moore in 1906. The school was opened in 1903 as a home for up to 300 orphans and destitute boys under the charge of Dr T. J. Barnardo. Musical training was given for boys intending on being enlisted in the Royal Marines or other military bands. The band was still active in 1914

**Wells Lunatic Asylum Brass Band** (Somerset)

Active in 1867. Still active in 1892. Conductor Mr Stiles in 1886

**Werrington Industrial School Brass Band** (Staffordshire)

Founded in 1879. Within a year, two boys had been sent from it to join regimental bands. Still active in 1898

**West Greenwich Ragged School and Working Lads' Institute Brass Band** (Kent)

Active in 1890, bandmaster Mr Hansford. Still active in 1897. 23 members in 1891. The school was located in Bridge Street, Blackheath

**West Ham Union Schools' Brass Band** (Leytonstone, Essex)

Active in 1880, conductor Mr Corbett

**West Ham Union Workhouse Saxhorn Band** (Leytonstone, Essex)

Formed in October 1860, bandmaster Mr Phemister (on a salary of £40 per annum). This was a boys' brass band formed of the inmates. Still active in 1869

**West London Mission Children's Home Band** (Middlesex)

Active from 1881, conductor R. Heath Mills. Still active in 1899. The home was located at Eastbourne Terrace, Paddington.

**West Riding Pauper Lunatic Asylum Brass Band** (Wakefield, Yorkshire - West Riding))

Active in 1860 and through the 1860s, based at the Stanley Royd Hospital. Conductor Mr Lofthouse in 1860

**West Smethwick Adult School Band** (Staffordshire)

Founded in 1904

**West Thorn School Brass Band** (Lanarkshire)

Active in 1901 through to the 1930s, it was based at the Parkhead Roman Catholic Reformatory for Boys, West Thorn, Tollcross, Glasgow.

**Westleigh Mills School Brass Band** (Lancashire)

Active in 1881. George Baines was a member of the band at the time of his death in December 1881 in the Abram Colliery explosion.

**Whitby Orphans' Prize Brass Band** (Yorkshire - North Riding))

Active in 1883 to 1901. Conductor James Greig in 1901. The Whitby branch of the Port of Hull Society's Sailor's Orphan Home

**Whitechapel Industrial School Brass Band** (Middlesex)

Active in 1861 to 1868. The school was located in Forest Lane

**Whitney's Boys' Home Brass Band** (Manchester, Lancashire)

Active in 1890, when it performed at a "Rags and Rubies" entertainment at the Assembly Rooms, Leigh in October 1890. The home was established in July 1885 and had rescued 154 lads from vagabondage and crime in those five years.

**Whitstone School Brass Band** (Shepton Mallet, Somerset)

Active in the late 1970s and early 1980s



**Whittingham Asylum Brass Band** (near Preston, Lancashire)

Active in the 1890s

**Wigmore School Brass Band** (West Bromwich, Staffordshire)

Active in 1892 to 1910. Conductor Mr Courbourn in 1907. The school was based at the Wigmore District School, Pennyhill Lane, Charlemont, it catered for pauper children to keep them out of the workhouses. It originally opened in 1870 to house workhouse children from the Walsall and West Bromwich Unions.

**Wigston Adult School Brass Band** (Leicestershire)

Active in the 1900s

**Wiltshire Reformatory for Boys Brass Band** (Warminster, Wiltshire)

Founded in 1901. Active throughout the 1900s.

**Winchester Diocesan Training School Brass Band** (Hampshire)

Active in 1864, conductor Mr Carter

**Winchester Soldiers' Home Brass Band** (Hampshire)

Founded in 1887. Conductor Frank Page in 1887-1904. Still active in 1932. Initially there were eight instrumentalists to help the musical part of the gospel services but by 1925 there were forty-two men in membership, thirteen of whom were preachers of the gospel. The home was first established by Misses Emma and Louise Perks in 1877, their work was conducted on simple evangelical lines and was not attached to any particular denomination.

**Windsor Workhouse Brass Band** (Berkshire)

Active in 1901, formed of boys from the Old Windsor Union Workhouse

**Witham Metropolitan School Brass Band** (Essex)

Active in 1892 through to 1902. Conductor W. Muskett in 1900. The school was purchased from the Witham Union Workhouse in 1882 for use as an orphan home, accommodating 200 children. It closed in 1902, converting to an asylum for children with ringworm

**Withington Workhouse Brass Band** (Lancashire)

Active in 1880. Still active in 1896. The bandmaster attracted a salary of £30 per annum in 1880, which rose to £60 in 1896. The workhouse was operated by the Chorlton Board of Guardians in the Chorlton Union.

**Wood Green Adult School Band** (Middlesex)

Active in the 1900s. Conductor Mr Bunting in 1907, George Williams in 1908

**Woodland Street School Brass Band** (Smethwick, Staffordshire)

Active in 1882

**Worcester County Lunatic Asylum Brass Band** (Powick, Worcestershire)

Active in 1855. The director, Doctor Sherlock, spent £30 on eight brass instruments to enable the band for "the amusement of the patients". Conductor Mr Pountney in 1881. Still active in 1885

**Wrexham Union Workhouse Brass Band** (Denbighshire)

Active in 1876. This was a boys' brass band

**Yarmouth Workhouse Brass Band** (Great Yarmouth, Norfolk)

Founded in spring 1888. Active through to 1894. Consisted of boys who were children of inmates of the workhouse. Conductor J. Sewell Johnson in 1888-1889

**Yate British School Brass Band** (Gloucestershire)

Active in 1888. Still active in 1905. Conductor Edgar Iles in 1892. Secretary D.J. Higgs in 1894. Contemporary with the Yate Star Brass Band

**York Blind School Brass Band** (Yorkshire)

Founded in 1843 at the Yorkshire School for the Blind. Revived in 1861. Still active in 1883

**York Boys' Industrial School Band** (Yorkshire)

Founded in 1880, conductor Mr Hunt. Active through to 1913. Conductor Mr Hulse in 1882. The school was based in Marygate. Performed at Thorganby Show in August 1894. Played at a garden party at Bishopthorpe Palace in July 1910. Conductor Mr Bates in 1902

**York City Asylum Brass Band** (Yorkshire)

Active in the 1890s

**York Ragged and Industrial School Brass Band** (Yorkshire)

*See: York Boys' Industrial School Band*

## Overseas bands

### AUSTRALIA

#### **Clontarf Orphanage Brass Band** (Western Australia)

Founded in 1918. Reformed in 1945



#### **Kincumber Orphanage Brass Band** (New South Wales)

Active from 1928 to 1939. Conductor Thomas Mellor 1928-1931, Bill Leahy 1938-1939

**Largs Orphanage Girls' Brass Band** (South Australia)  
Active in 1921 to 1923



**St Augustine's Orphanage Band** (Geelong, Victoria)

Active in 1901 to 1916. Conductor John Graves 1901-1902, Percy Jones 1903-1905, Les Hoffman 1911



**St Joseph's Home Band, Brass Band** (Sebastopol, Ballarat, Victoria)  
Active in 1903 to 1925



**St Joseph's Orphanage Band** (Goulburn, New South Wales)  
Active in 1924

**St Vincent de Paul's Orphanage Brass Band (1)** (Melbourne, Victoria)  
Active in 1921 to 1932, conductor Les Hoffman

**St Vincent de Paul's Orphanage Brass Band (2)** (Melbourne, Victoria)  
Active in 1964, conductor Jim Doherty

**Westmead Boys' Home Brass Band** (New South Wales)

Active in 1924 to 1939. Conductor Gus Cerezo in 1924-1926, Jock Herron 1932-1933, Ossie Summerton 1935-1939

## CANADA

**Alert Bay Industrial School Brass Band** (British Columbia)

Active in 1906

**Coqualeetza Industrial School Brass Band** (Chilliwack, British Columbia)

Active in 1900

**Cranbrook Industrial School Brass Band** (British Columbia)

Active in 1906

**High River Industrial School Brass Band** (Alberta)

Active in 1893



**Kamloops Industrial School Band** (British Columbia)

[ no information ]

**Kootenay Industrial School (St Eugene Mission) Band** (Cranbrook, British Columbia)

[ no information ]

**Kuper Island Industrial School Band** (British Columbia)

[ no information ]

**Qu'Appelle Industrial School Brass Band** (Saskatchewan)

Active in 1896

**Williams Lake Industrial School (St. Joseph's Mission) Band** (British Columbia)

[ no information ]

## NEW ZEALAND

### **Burnham Industrial School Brass Band**

Founded in 1881. Still active in 1902



### **Stoke Orphanage Brass Band (Nelson)**

Active in 1902. This was the band of St Mary's Industrial School, originally a privately run, Roman Catholic, reform school. After 1900, following various scandals, a lay administration took over the running of the orphanage.



## United States of America

### Alabama Boys' Industrial School Band (Birmingham, AL)

Active in the 1910s and 1920s



### Alabama Orphans School Band (Huntsville, AL)

Active from 1979 to 1987, conductor Franz Renggli

### Anderson Industrial School Band (IN)

Active in the 1910s





**Bethany Home Band (Womelsdorf, PA)**  
A boys' band active in the 1910s to 1924



**Blackford Cornet Band (Staunton, VA)**

Active in the early 1890s, conductor Thomas Memory Turner. This band was located at the Western Lunatic Asylum and consisted of male attendants at the hospital. An account from 1892 stated: "The music of the Hospital Band sets aside solitude and relieves the monotony of asylum life, and has a wonderful effects in quieting the noisy and disturbed patients, besides being a source of great pleasure and enjoyment to the more quiet class, and is greatly enjoyed by visitors to the institution"

**Boston Farm and Trade School Band (MA)**

Active in 1857

**Cadet Band - Soldier's Orphans Industrial School (Scotland, PA)**  
Active in 1907



**Canton Home Star Brass Band (MS)**  
Active in the 1890s  
**Carmi Orphanage Boys' Band (IL)**  
Active in 1922



**Central I.O.O.F. Orphans Home Band (PA)**  
Active in the 1910s



**Chicago Reform School Brass Band (IL)**

Active from 1862 to 1872

**Children's Industrial Home Band (Des Moines, WA)**

*See: Jolly Entertainers Band*

**Clinton Prison Band (Dannemora, NY)**

Active in 1914

**Colored Orphan's Home and Industrial School Band** (Huntington, WV)  
Active around 1900



**Colored Waifs Home Brass Band** (New Orleans, LA)  
Active in 1912



**Corsicana State Orphans Home Brass Band (TX)**

Active in 1911. Funds were provided for instruments for a brass band. The Superintendent reported to the Governor, "The Home possesses a well organized and trained brass band of its own, so that now our boys and girls do not have to sit out in front of the building and listen with tears in their eyes to the band of the Odd Fellows Home."

**Danville Oddfellows Orphan Home Brass Band (IL)**

Active in the 1910s and 1920s

**Davenport Orphans Home Band (IA)**

Active around 1910



**Drapers Childrens Home Band (Les Moines, WI)**

Active in 1923

**E.U.B. Orphanage and Home Boys' Band** (Quincy, PA)  
Active in the 1940s



E. U. B. ORPHANAGE AND HOME BOYS' BAND, QUINCY, PA.

**Eckstein Norton Institute Boys' Band** (Cane Springs, Bullitt County, KY)  
Active around 1900. The school opened in 1890 and was merged with Lincoln Institute in 1912.  
**Elko Orphans Band** (Tulsa, OK)  
Active in 1926



"Make what you want with what you have."  
Felix Bower's Famous Juvenile Entertainers

HOME ADDRESS  
Tulsa, Okla., Route 6, Box 143

**Evangelical Orphanage Girls' Saxophone Band** (Lewisburg, PA)  
Active from the 1930s to the 1950s, bandmaster Luther W. Albert



**Fairmount Children's Home Band** (Alliance, OH)  
Active in the 1930s, bandmaster S.G. Gilbert



**Father Baker's Home for Boys' Brass Band** (West Seneca, NY)  
*See: Our Lady of Victory Band*

**Father Flanagan's Boys Home Band (Boys Town, NE)**  
Active in the 1910s





**Florida Industrial School for Boys Band (FL)**  
Active around 1910



**Fort Madison Prison Inmates Band (IA)**  
Active in the 1900s

**Frankfort Prison Band (KY)**  
Active in the 1900s

**German Odd Fellow Home Band (Unionport, NY)**  
A boys' band active around 1900



### **Gilroy I.O.O.F. Home Boys' Band (CA)**

In 1910 the Rainbow Rebekah Lodge No. 97, of Stockton (CA), fulfilled a promise to the boys of the IOOF Home at Gilroy. Through their work and effort they gave a carnival that netted them a good sum of money. This enabled them to purchase and presented to the boys a beautiful set of brass instruments, together with leather cases. It was the pride and ambition of the lodge to have a Boys' Band formed in the Home and to provide the instruments. The Boys' Brass Band was formed at the Home in 1911. In the Fourth of July celebration in Gilroy, the Band led the second division of the parade. Jules Chourre, Leonard Newport and Jay Rice played cornet in the high school orchestra. Some of the boys were Archie Lucke, Albert Sherman, Leonard Newport, Bud Clemons, Emile Chourre, Jay Rice, Jules Chourre, and Chester Rice. In 1912 the Boys' Band traveled to Stockton by train for a concert. The Rainbow Lodge had purchased the instruments for the band. The band stayed for three days. A year later in 1913 Gilroy decided to have a city band. Four of the Home children joined. The Boys' Band played for the Grand Lodge in San Francisco in 1915. The children stayed for three days. The Boys' Band was in their new uniforms and played in the parade. The new Children's Home in Gilroy had been completed in 1922 and a large rooms on the main floor became the music room. The Boys' Band gave way to a full orchestra. Mr. Taix became the instructor and conductor of the Home Orchestra that became one of the best Junior Orchestra in California in the 1930's



**Good Shepherd Home Band (Allentown, PA)**

Active in 1923



**Greendale Boys Reform School Band (KY)**

Active in 1926

**Hebrew Orphan Asylum Brass Band (New York, NY)**

Founded in 1874, it disbanded in 1885. Reformed in July 1888 instructed by George Wiegand, and active through to 1941. [Further information see: The Hebrew Orphan Asylum Band of New York City, 1874-1941: Community, Culture and Opportunity - Cambridge Scholars Publishing, 2016]

**I.O.O.F. Home Band of Missouri (MO)**  
Active in 1907



**Indiana Soldiers and Sailors Orphans Home Band (Knightstown, IN)**  
Active in the 1900s



**Industrial School Band** (Fort Wayne, IN)

Active in the 1900s

**IOOF Widows and Orphans Home Band** (Corsicana, TX)

Active in 1910. Contemporary with the Corsicana State Orphans Home Brass Band

**Iowa I.O.O.F. Orphans Home Band** (Mason City, IA)

Active in 1909



## **Jenkins Orphanage Band (Charleston, SC)**

Active in the 1900s. It performed throughout the United States and even toured England raising money for the support of the orphanage. As many as five bands were on tour during the 1920s. It finally disbanded in the 1980s. [Further information, see: The Jenkins Orphanage Band - Bibliolore: the RLIM blog - 13 March 2014 - (<https://bibliolore.org/2014/03/13/the-jenkins-orphanage-band/>); The Jenkins Orphanage Bands, in: Black Europe - Bear Family Productions, Hambergen, 2013; Rockwell, Anne F. - Hey, Charleston!: The True Story of the Jenkins Orphanage Band - Carolrhoda Books, 2013. ISBN: 0761355650; Chilton, John - A Jazz Nursery: The Story of the Jenkins' Orphanage Bands - Bloomsbury, 1980. ISBN: 095012902x. The band is one of a very few for which there exists recordings – e.g. see: <https://www.youtube.com/watch?v=j0H5uhTxYP8>]



**Jolly Entertainers Band** (Des Moines, WA)

Active in 1909 to 1925. This was a band of children from the Children's Industrial Home and Manual Training School. It toured extensively across the USA and Canada, raising money for the home. H.M. Draper was the superintendent and band director. The home eventually housed up to 40 children, all of who were taught musical instruments. In the early days there were just 7 children under Draper's care: Doloros, Gudrun, Birdie, Mike, Maggie, Hartel and Phillis



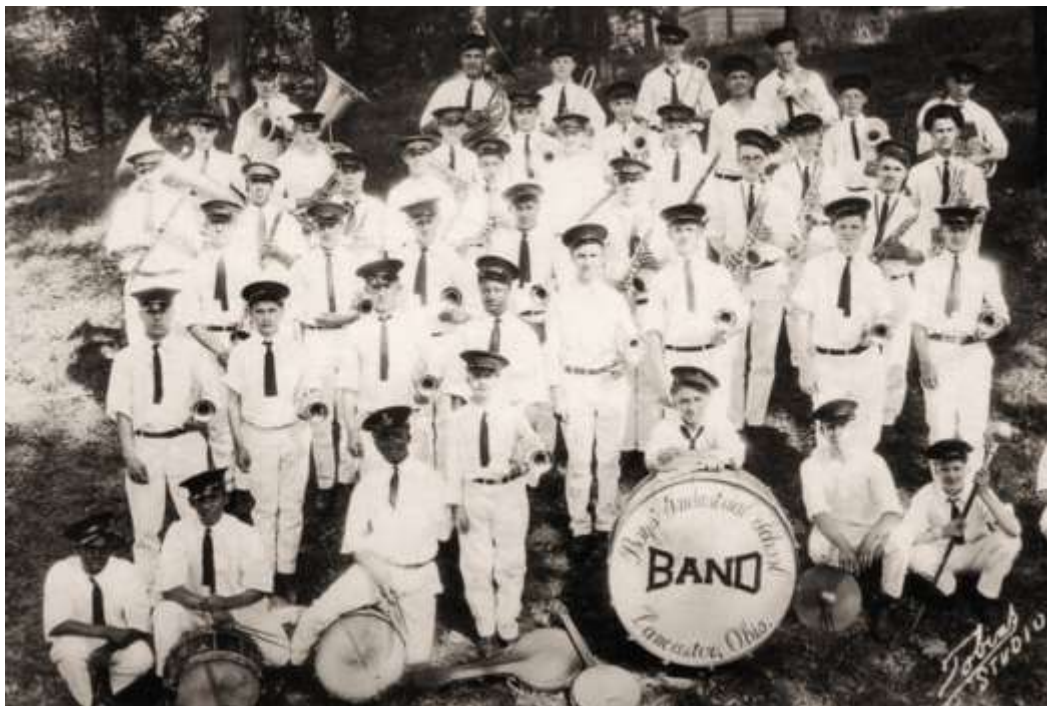
**Kentucky Children's Home Brass Band (Louisville, KY)**

Active in 1928, members included Elmer Sewell, Gilbert Scales, Jim Settle, Chick Lehring, John Wyck, George Settle, Robert Rafferty, Homer Ware, Charles Haynes, and Roy Robinson. The band was located in Ormsby Village



**Lancaster Boys' Industrial Home Band (OH)**

Active around in the 1920s





**Liberty Oddfellow Home Band (MO)**  
Active around 1900



**Loysville Orphans Boys Band (PA)**  
*See: Tressler Orphans Home Band*

### **Lytton Home Salvation Army Band** (Lytton Springs, CA)

The children's home opened in 1904 after the Army closed its Amity Farm Colony in Colorado and relocated the orphans living there to Lytton Springs. Under the care of Captains Wilfred and Alice Bourne, the group traveled by rail to the new property, originally incorporated as the Boys and Girls Industrial Home and Farm. Children from another Army orphanage in Oakland, California -the Golden Gate Orphanage Association—joined them. The Bournes arrived at Lytton in October 1904 with only \$21 and 16 children to care for, including their own son, daughter and foster child. During their tenure at Lytton, from 1904-1916, the Bournes cared for over 1,000 children, with up to 250 children in residence at any one time. From the earliest days, the property was self-sufficient with its own grammar school - The William Booth School - and a Christian education program.



### **Maine State Prison Band** (ME)

Active in 1916

### **Minnesota State Prison Band** (MN)

Active in 1910

### **Montana State Prison Band** (Deer Lodge, MT)

Active in the 1910s

### **N.H. and S. Orphans' Cornet Band** (New York City, NY)

Active in 1874, performing on six excursions on the rivers which were provided for destitute mothers and children

**National Home Band** (Marion, IN)  
Active in 1906-1911



**National Home Band** (Togus, ME)  
Active in the 1900s

**New York Juvenile Asylum Silver Cornet Band** (NY)  
Active in 1872, conductor W.H. Rice

**New York Orphan Boys' Band** (New York City, NY)  
Active in the 1900s, conductor Roy de Forest, manager J. de Forest (619 Madison Avenue, New York City)

NEW YORK ORPHAN BOYS' BAND

CONCERT AND MILITARY MUSIC  
Furnished FOR ALL Occasions

ROY DE FOREST youngest LEADER in the WORLD imitating SOUSA

J. DE FOREST, Manager, 619 Madison Avenue, N. Y.

**Normal Industrial Institute Brass Band (Frankfort, KY)**

Active in the 1910s

**Odd Fellows Orphans Home Band (Lincoln, IL)**

Active in 1909



**Odd Fellows Orphan's Home Band (Danville, IL)**

Active in the 1920s



**Oddfellows Home Band (Lexington, KY)**  
Active in the 1910s



**Ohio Pythian Home Boys Band (Springfield, OH)**  
Active in 1907. However, a report (*"A View of American Orphanages Through A Study of the History of The Ohio Pythian Home"*, by Stephen Scott) states a boys' band was formed at the home in 1913 and a girls' band in 1924.



**Orange Home Band** (Hatboro, PA)

Active in the 1910s

**Orphan and Industrial Home Band** (WV)

Active in the 1900s



**Orphan's Industrial Home Band** (Seattle, WA)

Active in 1906

**Our Lady of Victory Band** (West Seneca, NY)

Active in the early 1900s. The boys were orphans at Father Baker's Home for Boys, and the band consisted of some 25 brass players with a couple of clarinets.

**Parmadale Children's Home Brass Band (OH)**  
Active in the 1950s



**Paul Moss Orphanage and Industrial Home Band (Augusta, GA)**  
Active in 1913



**Pennsylvania Soldiers' Orphans Industrial School Band (PA)**  
Active in the 1900s



**Prairie Home Band (Le Cygne, KS)**  
Active in the 1890s



**Prison Band (Stillwater, MN)**  
Active in 1909

**Quincy Orphanage Home Band (PA)**  
*See: E.U.B. Orphanage and Home Band*



**Salem Prison Band (OR)**

Active in 1910

**San Francisco Industrial School Silver Cornet Band (CA)**

Active in 1876, consisting of around 20 boys aged under 14 years

**San Quentin Prison Band (CA)**

Active in 1880 to 1912

**Soldiers' Home Band (Danville, IL)**

Active around 1905

**Soldiers' Orphans' Home Band (Normal, IL)**

Active in the 1900s



**Soldiers' Orphans School Band (Chester Springs, PA)**  
Active in 1905



**Springfield I.O.O.F. Home Band (OH)**  
Active in the 1920s



**Springfield I.O.O.F. Home Girls Band (OH)**  
Active in the 1920s



**St Francis Home Band (Detroit, MI)**  
Active in the 1920s



**St Joseph's Orphan Asylum Band** (Cincinnati, OH)  
Active in the 1910s



**St Mary's Industrial School Band** (Baltimore, MD)  
Active in 1920



**St Vincent's Boys Home Band** (Denver, CO)  
Active in the 1910s



**St Vincent's School Band** (Marin County, CA)  
Active in the 1900s  
**State Insane Asylum Band** (Topeka, KS)  
Active in the 1910s



**State Reform School Brass Band** (Manchester, NH)  
Active in 1913

**Sunbury I.O.O.F. Orphans Home Band (PA)**  
Active in 1918



- Swede Hill Home Band (PA)**  
Active in the 1900s
- Teller Indian School Band (Grand Junction)**  
Active in the 1890s
- Tomah Indian School Band (WI)**  
Active in 1911

**Tressler Orphans Home Band** (Loysville, PA)  
Active in 1906 to 1938



**Union Home Cornet Band** (New York City, NY)  
Active in 1874

**Wartburg Orphan's School Band** (Mt Vernon, NY)  
Active in 1910



**Waupun State Prison Band (WI)**

Active in 1910

**Western Lunatic Asylum Cornet Band (Staunton, VA)**

*See: Blackford Cornet Band*

**Winston-Salem Colored Orphans Institute Brass Band (NC)**

Active in 1912, conducted by Rev. R. Shepherd, consisting of 5 boys and 5 girls aged between 9 and 14 years.

**Wisconsin State Prison Band (Waupun, WI)**

Active in 1910