

RESEARCH

Searching for Explanations for Cryptogenic Stroke in the Young: Revealing the Etiology, Triggers, and Outcome (SECRETO): echocardiography performance protocol

Sahrai Saeed MD¹, Eva Gerdtz MD^{1,2}, Ulrike Waje-Andreassen MD³, Juha Sinisalo MD⁴ and Jukka Putaala MD⁵

¹Department of Heart Disease, Haukeland University Hospital, Bergen, Norway

²Department of Clinical Science, University of Bergen, Bergen, Norway

³Department of Neurology, Haukeland University Hospital, Bergen, Norway

⁴Department of Cardiology, Heart and Lung Centre, University of Helsinki and Helsinki University Hospital, Helsinki, Finland

⁵Clinical Neurosciences, Neurology, University of Helsinki and Helsinki University Hospital, Helsinki, Finland

Correspondence should be addressed to S Saeed: sahrai.saeed@helse-bergen.no

Abstract

Background: The incidence of ischemic stroke in young patients is increasing and associated with unfavorable prognosis due to high risk of recurrent cardiovascular events. In many young patients the cause of stroke remains unknown, referred to as cryptogenic stroke. Neuroimaging frequently suggests a proximal source of embolism in these strokes. We developed a comprehensive step-by-step echocardiography protocol for a prospective study with centralized reading to characterize preclinical cardiac changes associated with cryptogenic stroke.

Methods and study design: SECRETO (Searching for Explanations for Cryptogenic Stroke in the Young: Revealing the Etiology, Triggers, and Outcome; NCT01934725) is an ongoing multicenter case-control study enrolling patients (target $n = 600$) aged 18–49 years hospitalized due to first-ever ischemic stroke of undetermined etiology and age- and sex-matched controls (target $n = 600$). A comprehensive assessment of cardiovascular risk factors and extensive cardiac imaging with transthoracic and transesophageal echocardiography, electrocardiography and neurovascular imaging is performed. Transthoracic and transesophageal echocardiograms will be centrally read, following an extensive protocol particularly emphasizing the characteristics of left atrium, left atrial appendage and interatrial septum.

Conclusions: A detailed assessment of both conventional and unconventional vascular risk factors and cardiac imaging with transthoracic and transesophageal echocardiography are implemented in SECRETO, aiming to establish indirect and direct risk factors and causes for cryptogenic stroke and novel pathophysiological brain-heart pathways. This may ultimately enable more personalized therapeutic options for these patients.

Key Words

- ▶ transthoracic echocardiography
- ▶ transesophageal echocardiography
- ▶ stroke
- ▶ cardiac sources of embolism
- ▶ patent foramen ovale
- ▶ risk factors

Introduction

The incidence of ischemic stroke in young patients is increasing globally (1). Stroke at younger ages is associated with increased morbidity and mortality, in particular with respect to recurrent cardiovascular events (2). Cardiac sources of embolism underlie 15–40% of all ischemic strokes and include a wide range of cardiac conditions (3). However, the cause of stroke in 30–50% of younger adults remains unknown, also termed as cryptogenic stroke (4, 5, 6). In many young patients with cryptogenic stroke, neuroimaging pattern suggests a proximal source of embolism. Notably, the risk of recurrent stroke in these patients was comparable to those with established major source of cardioembolism (7).

The etiology of cardioembolic sources of ischemic stroke may be classified as major, minor or uncertain (3, 8). Major cardioembolic causes include atrial fibrillation or flutter, recent or previous myocardial infarction with apical akinesia, left ventricular (LV) aneurysm, dilated cardiomyopathy, reduced LV ejection fraction (<35%), LV or left atrial appendage (LAA) thrombus, rheumatic and prosthetic heart valve disease, infective endocarditis, intracardiac tumors, congenital heart diseases, Takotsubo-cardiomyopathy and atherosclerosis in the ascending aorta and aortic arch, while minor or uncertain causes are as patent foramen ovale (PFO), mitral valve prolapse, mitral annular calcification, degenerative aortic stenosis, atrial septum aneurysm, spontaneous contrast on the echocardiogram, aortic aneurysm, false tendon in the LV, moderate to severe left atrium (LA) enlargement and LV hypertrophy (3, 4, 5, 6, 7, 8).

In particular, PFO has gained much attention recently due to positive results from trials comparing transcatheter PFO closure with medical therapy in the secondary stroke prevention (9). Currently, stroke in a patient with PFO is classified as cryptogenic if no other cause is identifiable in stroke classification systems. An European Expert Panel recently proposed that when PFO is believed likely to be implicated in a cryptogenic stroke, the event should be classified as PFO-related stroke (10). The panel also stressed that research should continue to verify additional risk factors and identify new high-risk phenotypes for PFO-related stroke, comprising an array of clinical, biochemical and cardiovascular imaging characteristics. In view of these considerations, an extensive assessment of cardiovascular risk factors and cardiac imaging is required to elucidate direct and indirect causes of cryptogenic stroke and subsequently offer these patients a more personalized therapeutic management. In the present paper, we present

a step-by-step transthoracic (TTE) and transesophageal echocardiography (TEE) performance protocol for the multicenter international case-control study, Searching for Explanations for Cryptogenic Stroke in the Young: Revealing the Etiology, Triggers, and Outcome (SECRETO; NCT01934725) (11).

Study design

SECRETO is an international multicenter prospective case-control study of young adults (aged 18–49 years) presenting with a documented first-ever ischemic stroke of undetermined etiology. Patients are included after standardized diagnostic procedures: brain MRI, imaging of intracranial and extracranial vessels, TTE and TEE, ECG and screening for coagulopathies. Stroke-free healthy control participants are recruited and matched with index patients by age (within 5 years), sex and ethnicity in a 1:1 fashion, as per the STROBE (STrengthening the Reporting of OBservational studies in Epidemiology) guidelines at each study site. As the incidence of ischemic stroke is approximately 10/100,000 per year in this age group (12), an international consortium has been established to recruit a sufficient number of patients in a reasonable time. Recruitment of subjects began in 2013 and is expected to be completed by the end of 2020 aiming to enroll a total of 600 patients and 600 control subjects. As of March 2019, 17 European centers are participating in SECRETO. The SECRETO study was approved by local ethical committees in all recruiting centers. Written informed consent was obtained and will be obtained from all study subjects prior to study enrollment.

Objectives

The principal aim of SECRETO is to document new risk factors and pathogenic pathways leading to currently cryptogenic stroke in the young. Specifically regarding the investigations on proximal sources of embolism, we aimed to (1) develop a standardized echocardiography performance protocol exceeding state-of-the-art; (2) to compare cardiac structural and functional findings in a case-control study to establish novel cardiac sources for embolism and (3) to use these data to explore cardiac structural and functional characteristics associated with recurrent thromboembolic events in a long-term follow-up. The cardiac imaging data can be further cross-linked with clinical risk factor data, neuroimaging findings, blood markers of thrombosis and hemostasis and genetic profiles. Finally, systems and

precision medicine approaches can be applied to identify clusters of clinical and cardio-anatomical, and biological characteristics to construct more holistic explanatory models for cryptogenic stroke.

Measures and clinical data at baseline

At baseline during hospitalization for the index stroke and at follow-up visit anthropometrics (height, weight, waist and hip circumference), blood pressure and heart rate are measured. Clinical data including an extensive review of neurological symptoms at presentation, diagnostic work-up, treatments, conventional and unconventional stroke risk factor information are collected using structured questionnaires. Brain and neurovascular imaging are subject to blinded central reading. A standard 12-lead ECG is obtained on admission, and after the acute phase.

Echocardiography

A step-by-step performance protocol was developed for TTE and TEE to allow their accurate and blinded central reading (SS) at Echo Core Lab in University of Bergen, Norway.

The protocol is based upon standard recommendations for the use of TTE and TEE (3). Particular emphasis will be placed on the measures of left and right atrium, atrial septum, LAA, the anatomical shape and size of PFO and its relation with aortic root and other adjacent structures, as well as interatrial and intrapulmonary (delayed) shunts. TTE may be the only cardiac imaging in cases with very severe stroke, receptive aphasia, or swallowing difficulties.

Transthoracic echocardiography

Each study is labeled with a study ID and date. Age, height and weight are entered to calculate body surface area. A sweep speed of 100 mm/s for all M-mode and Doppler recording are used. A loop of three RR intervals of all images in patients with sinus rhythm and five RR intervals in patients with atrial fibrillation is recorded. The order and modalities used to obtain the required TTE images are presented in Figs 1 and 2. Quantitative assessment of right ventricle, LV dimension and volumes are performed according to current international guidelines on quantitative echocardiography (13). LV systolic function is assessed by biplane Simpson's ejection fraction (13). Diastolic function is assessed according to current European guidelines (14).

Following TTE, supine brachial blood pressure is measured on the left arm (phase 1 and 5 Korotkoff sound) using an appropriately sized cuff and a regularly calibrated aneroid blood pressure sphygmomanometer. The measurements are recorded and provided along with the echocardiography images.

Transesophageal echocardiography

Prior to TEE, patients should have been fasting for at least 6 h. Benzodiazepines (diazepam or midazolam) are the

Box 1: Variables assessed by transesophageal echocardiography in SECRETO.

Aortic annulus diameter (cm)
 Aortic sinus diameter (cm)
 Sinotubular junction diameter (cm)
 Ascending aortic diameter (cm)
 Aortic arch atheromatosis (plaque thickness ≥ 4 mm)
 Descending aortic wall thickness (mm)
 Aortic valve cusps (numbers and morphology)
 Aortic valve calcification
 Tumors
 Vegetation/infective endocarditis, peri-valvular edema/
 inflammation
 Atrial septal defect
 Patent foramen ovale (PFO)
 Spontaneous left-to-right shunt assessed by color Doppler
 imaging
 Shift of shunt direction after Valsalva maneuver
 PFO diameter (mm)
 PFO tunnel length (mm)
 Assessment of delayed intrapulmonary shunt with bubble
 study
 Atrial septal aneurysm (ASA) ≥ 10 mm
 Hypertrophy of interatrial septum (lipomatous
 hypertrophy)
 Prominent Eustachian valve^a
 Left atrial thrombus/mass
 Left atrial appendage (LAA) thrombus
 Slow left atrial appendage flow velocity (peak velocity
 ≤ 30 cm/s)
 Ridge between left upper pulmonary vein and LAA and
 pectinate muscle
 Spontaneous echo contrast
 Mitral annular calcification and leaflet thickness
 Etiology of mitral regurgitation (functional, degenerative,
 mixed)
 Mitral regurgitation grade (I-IV):
 Quantitative assessment with PISA, vena contracta,
 regurgitant volume, EROA
 Aortic valve calcification: mild moderate severe
 Aortic regurgitation: mild moderate severe
 Tricuspid regurgitation: mild moderate severe

^aDefined as valve thickness ≥ 1 mm with at least 10 mm protrusion within the right atrium as measured from the border of inferior vena cava.



Version 1.1 / 12 Jun 2014

ECHOCARDIOGRAPHY PERFORMANCE PROTOCOL

Use sweep speed 100 mm for all M-mode and Doppler recording.

Record 3 RR intervals of all images.

|| TTE

Parasternal:

2D Aortic root and ascending aorta
2D Maximize left atrial (LA) diameter
M-mode Ao/LA
2D Maximize left ventricular (LV) diameter
CD (Color Doppler) the aortic and mitral valves
M-mode LV

Short axes:

2D Mitral valve
2D Tips of the papillary muscles
2D Aortic valve
CD Aortic valve
CD Pulmonary valve
CWD (continuous wave Doppler) Pulmonary valve

Apical 4-chamber:

2D 4-chamber with max LV length
2D 4-chamber with optimized LA
CD Mitral flow and LA
PWD (pulsed Doppler) Mitral inflow
TD (tissue Doppler) Septal annulus
TD (tissue Doppler) Mitral lateral annulus

Apical 5-chamber:

PWD or CWD (isovolumic relaxation time)
CD Aortic valve and whole LV
PWD Aortic annular velocity
CWD Peak Aortic jet velocity

Apical 2-chamber:

2D Optimize LV
2D Optimize LA
CD Mitral flow and LA

Apical long axis view: 3-chamber:

2D Optimize LV
2D Optimize LA
CD Mitral flow and LA
CD Aortic valve and whole LV
Blood pressure
Height and weight



Version 1.1 / 12 Jun 2014

ECHOCARDIOGRAPHY PERFORMANCE PROTOCOL

Use sweep speed 100 mm for all M-mode and Doppler recording.

Record 3 RR intervals of all images.

|| TEE

0°

2D 4 chamber view
CD Mitral flow and LA
CD Tricuspid flow and RA

60°

2D LV 2 chamber view
2D LAA (LA appendix)
PWD LAA
CD LAA

90°

2D LV 2 chamber view
CD Mitral flow and LA

30°

2D Aortic valve
CD Aortic valve

120°

2D Aortic valve and ascending aorta
CD Aortic valve and LV

30°

2D Atrial septum as thin as possible and zoom in
CD Covering both RA and LA
Adjust Echo to record 10 RR intervals

Inject intravenously agitated contrast:

8 ml saline + 1ml blood + 1ml air
2D Covering both RA and LA
Valsalva and repeat injection
2D Covering both RA and LA

0°

2D Descending aorta in shortaxis

90°

2D descending aorta

0° rotate the transducer clockwise

2D Aortic Arch& branches
CD Aortic Arch& branches

Figure 1

Echocardiography performance protocol showing the order of imaging planes and recommended TEE transducer angle °.

common sedative agents used during TEE. The patient is examined awake under a conscious sedative state and is able to respond to verbal or tactile stimuli. Xylocaine spray is used for local pharyngeal anesthesia. Any jaw prosthesis or artificial teeth that are not fixed are removed before the probe insertion. The patient is placed in the left lateral decubitus position during probe insertion. In the mid-line of the mouth the probe is slowly advanced to the sophagus. In the final study report, any difficulties during probe insertion, procedure-related complications as well as image quality and heart rhythm are documented. A standardized TEE protocol includes adequate visualization of all cardiac chambers, with emphasis on both atria, LAA, interatrial septum, heart valves and the thoracic aorta (8).

The overall TEE parameters implemented in the SECRETO study are summarized in Box 1 and in Figs 1 and 3. The suggested degrees to assess cardiac structures may vary to some extent according to the position of the heart in the chest in individual patients.

TEE with bubble study with and without Valsalva for the diagnosis of PFO

PFO is diagnosed by TEE with color Doppler imaging demonstrating spontaneous left-to-right shunt (from high pressure chamber to low pressure chamber) or the shift of shunt direction to right-to-left during Valsalva maneuver,



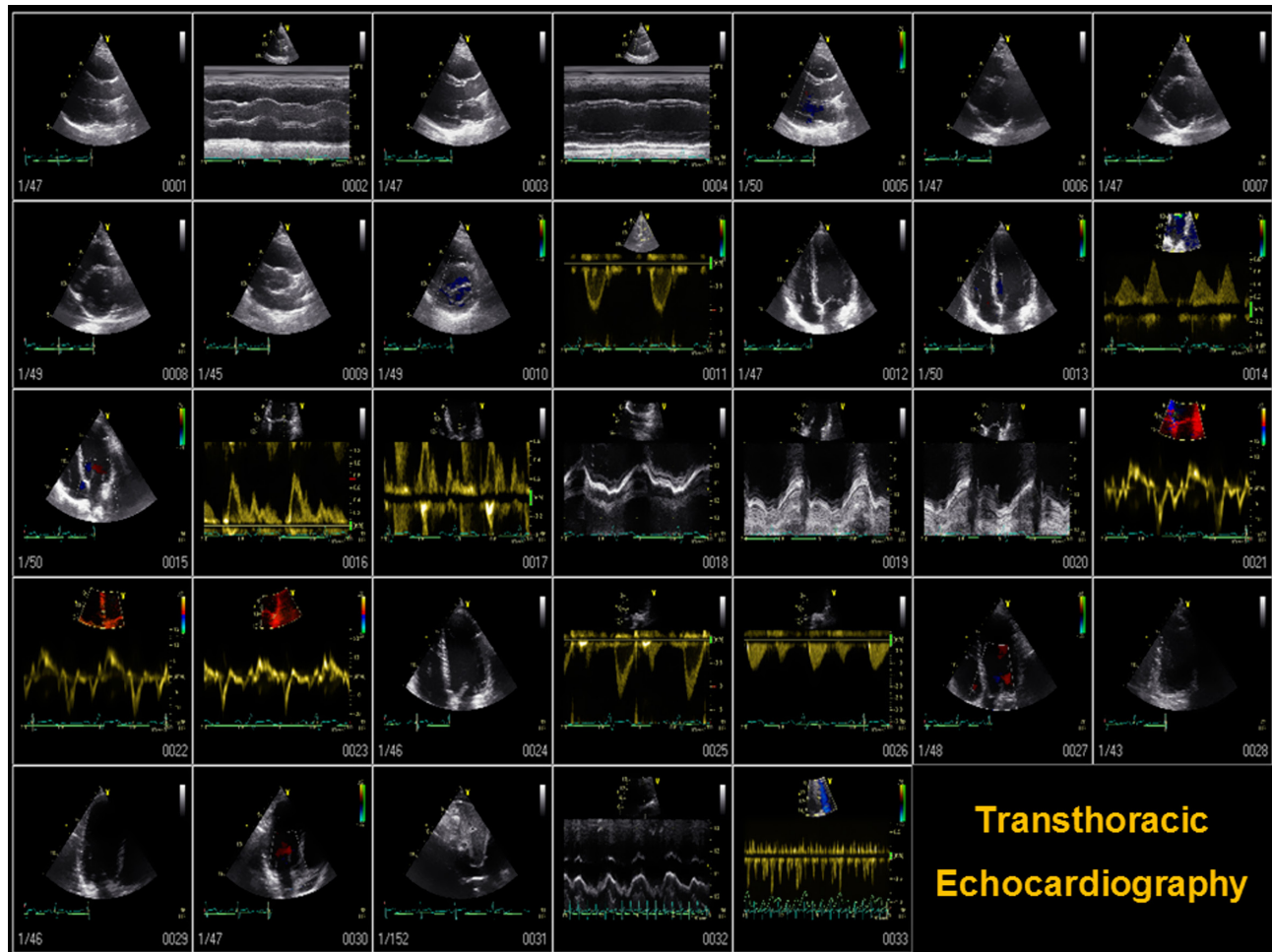


Figure 2
The number and order of imaging planes in conventional 2D, M-mode, tissue, spectral and color Doppler TTE.

confirmed by bubble study when microbubbles particles are visualized in the left atrial chamber in any single frame during first 3–5 cycles. An intravenous cannula is inserted in the right antecubital vein. For bubble studies, administration of intravenous agitated saline is used to assess atrial septal defects. Prior to the TTE procedure, the patients are given (sufficient) instruction to perform a successful Valsalva maneuver. The Valsalva maneuver is initiated when the contrast is arrived in the right atrium and to release on command after a total of 10–15 cardiac cycles. The size of PFO may be quantified by the number of microbubbles appearing in the LA (3–10 microbubbles as small shunt, 11–30 microbubbles as moderate shunt and >30 bubbles as a large shunt) (15). ASA is defined according to Olivares classification: Type 1R if the bulging is only in the right atrium. Type 2L if the bulging is only in the LA. Type 3RL if the major excursion bulges to the right atrium and the lesser excursion bulges toward the left. Type 4LR if

the maximal excursion of the ASA is toward the LA with a lesser excursion toward the right atrium. Type 5 if the ASA movement is bidirectional and equidistant to both atria during the cardiorespiratory cycle (16).

Spontaneous echo contrast is identified as a dynamic and slowly swirled smoke-like signal. LAA slow flow velocity is defined as peak velocity ≤ 30 cm/s. The LAA is carefully inspected for the presence of thrombus using multiplane imaging from 0° to 180° . Furthermore, normal variants of cardiac structures and artifacts in right atrium (lipomatous hypertrophy of atrial septum, pectinate muscles, Chiari network, Eustachian valve, catheters and pacemaker leads), LA (the ridge between left upper pulmonary vein and LAA) and ventricles (trabeculation, false chorda, papillary muscle, catheter and pacemaker leads, moderate band in the right ventricle), which are essentially not related to embolic events, are distinguished from cardiac masses (17).

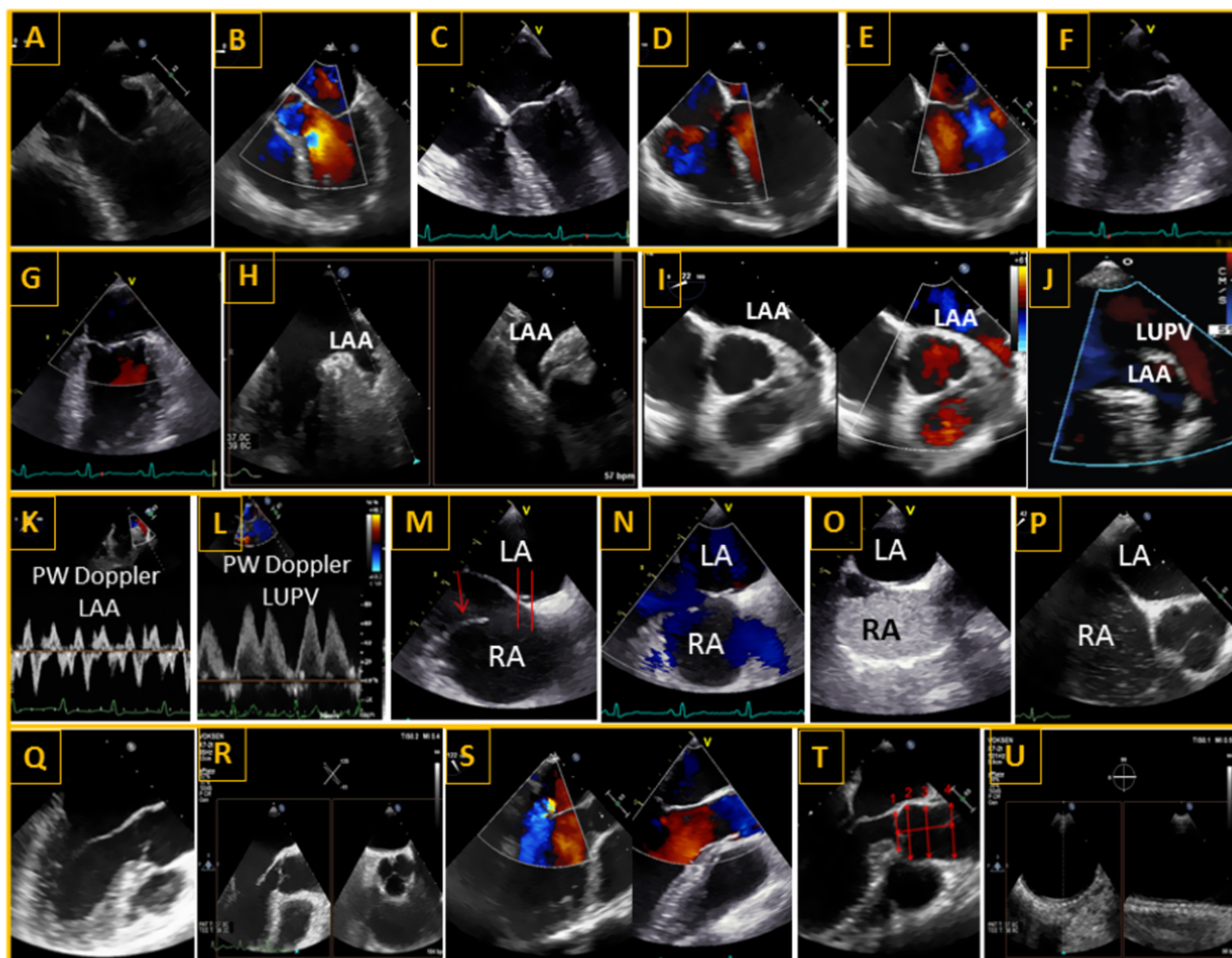


Figure 3

(A and B) Upper-esophageal 5-chamber view 0° showing aortic valve (B color Doppler), (C) mid-esophageal 4-chamber view 0°, (D) color Doppler across the tricuspid and (E) mitral valve, (F and G) mid-esophageal 2-chamber view showing mitral valve, (H) 2-chamber simultaneous X-plane view showing left atria appendage (LAA) without thrombus, (I) short-axis view of LAA combined with color Doppler, (J) zoomed image with color Doppler flow in LAA and left upper pulmonary vein [LUPV] at 27°, (K) pulsed-wave velocity in LAA, (L) pulse wave velocity in LUPV, (M and N) mid-esophageal image display of atria, inter-atrium septum, Chiari network (arrow) and a patent foramen ovale (PFO) tunnel (red lines) at 100°. (O) Mid-esophageal view showing right atrium filled with agitated saline bubbles, (P) short-axis view of atria, atrial septum and a cross-sectional view of aortic valve at 40° (also called procedural view), (Q) long-axis view showing mitral and aortic valve at 125°, (R) simultaneous x-plane view of aortic valve, (S) color Doppler flow across mitral (left) and aortic valve (right), (T) dimensions at aortic annulus (1), aortic root (2), sinotubular junction (3) and ascending aorta (4) in long-axis view 122°, and (U) a simultaneous view of descending aorta, cross-sectional (left) and longitudinal view (right) at 180°.

Discussion

The incidence of ischemic stroke in younger patients is increasing, and risk factors are changing over time. Among the most likely explanations for this worrying observation is the increasing prevalence of cardiometabolic risk factors, mainly obesity in young individuals in populations (18), leading to early development of hypertension and diabetes mellitus and vascular aging (19). Contemporary neuroimaging suggests proximal source of embolism in a large

proportion of young patients with cryptogenic stroke, thus more comprehensive studies, searching for underlying causes of ischemic stroke in the heart or the proximal aorta are spoken for. The SECRETO multicenter study includes a step-by-step echocardiography protocol to explore the cardiac structural and functional risk factors as novel causal factors in cryptogenic ischemic stroke in the young.

PFO is a common finding in the general population with a prevalence of approximately 25% and may well be an innocent bystander in a patient with cryptogenic

stroke (10). Stroke in a patient with PFO is classified as cryptogenic if no other cause is identifiable, according to existing stroke classification systems. Neuroimaging pattern and patient characteristics are typically unhelpful in the assessment of PFO's clinical relevance (10). Acute evidence of a deep venous thrombosis or pulmonary embolism, recent prolonged travel and immobilization or Valsalva maneuver preceding the ischemic stroke event, are considered to increase the probability of paradoxical embolism due to a right-to-left shunt (17, 20). The differentiation between an incidental and a culprit PFO for index stroke will be evaluated based on risk calculators such as the risk of paradoxical embolism (RoPE) score (21), clinical assessment based on a multidisciplinary approach and multimodality imaging. Importantly, due to remaining uncertainty in the causality of PFO, a European expert panel stressed the need to identify new high-risk PFO phenotypes and search additional risk factors that would help in prediction of PFO-related events (10).

A patient presenting with the previously mentioned risk factors for paradoxical embolism may also have other factors that increase the risk of thrombosis, such as genetic or acquired pro-thrombotic factors. Similarly, a sudden rise in pulmonary arterial pressure due to acute pulmonary embolism caused by deep venous thrombosis in the lower extremities may contribute to the migration of the thrombus across the atrial septum to the systemic circulation (20). It is, however, of utmost importance to study cardiac characteristics also in patients without PFO, in particular, because embolic cortical infarct patterns are similar in patients with and without PFO (10). Moreover, a patient-level meta-analysis of randomized trials suggests that also subcortical infarcts, traditionally not considered embolic, may indeed have an embolic origin (22).

Of note, previous stroke etiology studies have not included a structured, comprehensive cardiac evaluation strategy or centralized core laboratory analysis of echocardiography (17). In SECRETO, it is mandatory to (1) minimize inter-operator variability and (2) allow standardized central reading of multiple exploratory measures. Therefore, we aimed to develop a comprehensive step-by-step TEE protocol to characterize potentially pathogenic changes associated with cryptogenic stroke. In particular, a standardized TEE with thorough evaluation of both atria, LAA, interatrial septum aneurysm and defect and the anatomical shape and size of PFO is applied. All these factors have been linked to PFO-associated strokes in retrospective studies (23, 24).

Poor performance of Valsalva may hamper identification of PFO. However, we complement echocardiography studies with a prior transcranial Doppler ultrasound bubble test to quantify right-to-left shunt. Transcranial Doppler (TCD) is being done systematically at selected sites. To achieve the maximal accuracy in PFO diagnosis, the combined use of different techniques is warranted (10). However, as the majority of right-to-left shunts is represented by PFO, PFO-related parameters are better evaluated by standardized step-by-step TEE compared with TTE. Further, whether 3D echocardiography has incremental clinical and prognostic value over 2D echocardiography should be explored in future studies. Finally, TEE is a semi-invasive modality and its use in healthy volunteers is an ethical consideration. However, this is counter-balanced by the fact that complications related to TEE are rare. In a study population that included patients with a heart disease, the complication risk attributable to TEE was 0.2–0.5% (25). Complication risk of TEE is similar to that of gastroscopy and is usually associated with concomitant diseases of upper gastrointestinal tract. TEE will not be performed if any contraindication is found, including difficulty in swallowing, any upper gastrointestinal tract disease, severe cervical spinal arthrosis or a known risk of bleeding, coagulation abnormality or thrombocytopenia. Therefore, in healthy subjects without contraindications for the investigation or cardiac disease, the health risks associated with TEE are considered minimal. TEE may be therefore applied following individual agreement, and after approval by the local ethics committee.

Conclusion

Cardioembolic stroke is a syndromal disorder which includes multiple cardiac conditions, and may have devastating implications if occurred in early life. A detailed assessment of both conventional and unconventional vascular risk factors and cardiac imaging with TTE and TEE are implemented in SECRETO. Particularly, a standardized step-by-step TEE imaging aiming to the evaluation of both atria, LAA, Eustachian valve, Chiari network, interatrial septum aneurysm and defect and the anatomical shape and size of PFO, are implemented in the post-stroke screening work-up. The goal of SECRETO is to identify novel risk factors and cardiac imaging characteristics of cryptogenic stroke to advance current understanding, and ultimately enable more personalized therapeutic options for these patients.

Declaration of interest

The authors declare that there is no conflict of interest that could be perceived as prejudicing the impartiality of the research reported.

Funding

The participating centers are funded by Finnish Medical Foundation, the Academy of Finland and Helsinki University Central Hospital.

References

- Bejot Y, Delpont B & Giroud M. Rising stroke incidence in young adults: more epidemiological evidence, more questions to be answered. *Journal of the American Heart Association* 2016 **5** e003661. (<https://doi.org/10.1161/JAHA.116.003661>)
- Aarnio K, Siegerink B, Pirinen J, Sinisalo J, Lehto M, Haapaniemi E, Nave AH, Kaste M, Tatlisumak T & Putaala J. Cardiovascular events after ischemic stroke in young adults: a prospective follow-up study. *Neurology* 2016 **86** 1872–1879. (<https://doi.org/10.1212/WNL.0000000000002689>)
- Pepi M, Evangelista A, Nihoyannopoulos P, Flachskampf FA, Athanassopoulos G, Colonna P, Habib G, Ringelstein E, Sicari R, Zamorano JL, *et al.* Recommendations for echocardiography use in the diagnosis and management of cardiac sources of embolism: European Association of Echocardiography (EAE) (a registered branch of the ESC). *European Journal of Echocardiography* 2010 **11** 461–476. (<https://doi.org/10.1093/ejehocard/jeq045>)
- Yesilot Barlas N, Putaala J, Waje-Andreassen U, Vassilopoulos S, Nardi K, Odier C, Hofgart G, Engelter S, Buraw A, Mihalka L, *et al.* Etiology of first-ever ischaemic stroke in European young adults: the 15 Cities Young Stroke Study. *European Journal of Neurology* 2013 **20** 1431–1439. (<https://doi.org/10.1111/ene.12228>)
- Rolfes A, Fazekas F, Grittner U, Dichgans M, Martus P, Holzhausen M, Bottcher T, Heuschmann PU, Tatlisumak T, Tanislav C, *et al.* Acute cerebrovascular disease in the young: the Stroke in Young Fabry Patients study. *Stroke* 2013 **44** 340–349. (<https://doi.org/10.1161/STROKEAHA.112.663708>)
- Li L, Yiin GS, Geraghty OC, Schulz UG, Kuker W, Mehta Z, Rothwell PM & Oxford Vascular Study. Incidence, outcome, risk factors, and long-term prognosis of cryptogenic transient ischaemic attack and ischaemic stroke: a population-based study. *Lancet Neurology* 2015 **14** 903–913. ([https://doi.org/10.1016/S1474-4422\(15\)00132-5](https://doi.org/10.1016/S1474-4422(15)00132-5))
- Martinez-Majander N, Aarnio K, Pirinen J, Lumikari T, Nieminen T, Lehto M, Sinisalo J, Kaste M, Tatlisumak T & Putaala J. Embolic strokes of undetermined source in young adults: baseline characteristics and long-term outcome. *European Journal of Neurology* 2018 **25** 535–541. (<https://doi.org/10.1111/ene.13540>)
- Saric M, Armour AC, Arnaout MS, Chaudhry FA, Grimm RA, Kronzon I, Landeck BF, Maganti K, Michelena HI & Tolstrup K. Guidelines for the use of echocardiography in the evaluation of a cardiac source of embolism. *Journal of the American Society of Echocardiography* 2016 **29** 1–42. (<https://doi.org/10.1016/j.echo.2015.09.011>)
- Ntaios G, Papavasileiou V, Sagris D, Makaritsis K, Vemmos K, Steiner T & Michel P. Closure of patent foramen ovale versus medical therapy in patients with cryptogenic stroke or transient ischemic attack: updated systematic review and meta-analysis. *Stroke* 2018 **49** 412–418. (<https://doi.org/10.1161/STROKEAHA.117.020030>)
- Pristipino C, Sievert H, D'Ascenzo F, Louis Mas J, Meier B, Scacciatella P, Hildick-Smith D, Gaita F, Toni D, Kyrle P, *et al.* European position paper on the management of patients with patent foramen ovale. General approach and left circulation thromboembolism. *European Heart Journal* 2018 **25** ehy649. (<https://doi.org/10.1093/eurheartj/ehy649>)
- Putaala J, Martinez-Majander N, Saeed S, Yesilot N, Jäkälä P, Nerg O, Tsvigoulis G, Numminen H, Gordin D, von Sarnowski B, *et al.* Searching for Explanations for Cryptogenic Stroke in the Young: revealing the Triggers, Causes, and Outcome (SECRETO): rationale and design. *European Stroke Journal* 2017 **2** 116–125. (<https://doi.org/10.1177/2396987317703210>)
- Putaala J, Metso AJ, Metso TM, Konkola N, Kraemer Y, Haapaniemi E, Kaste M & Tatlisumak T. Analysis of 1008 consecutive patients aged 15 to 49 with first-ever ischemic stroke: the Helsinki Young Stroke Registry. *Stroke* 2009 **40** 1195–1203. (<https://doi.org/10.1161/STROKEAHA.108.529883>)
- Lang RM, Badano LP, Mor-Avi V, Afilalo J, Armstrong A, Ernande L, Flachskampf FA, Foster E, Goldstein SA, Kuznetsov T, *et al.* Recommendations for cardiac chamber quantification by echocardiography in adults: an update from the American Society of Echocardiography and the European Association of Cardiovascular Imaging. *Journal of the American Society of Echocardiography* 2015 **28** 1.e14–39.e14. (<https://doi.org/10.1016/j.echo.2014.10.003>)
- Nagueh SF, Smiseth OA, Appleton CP, Byrd 3rd BF, Dokainish H, Edvardsen T, Flachskampf FA, Gillebert TC, Klein AL, Lancellotti P, *et al.* Recommendations for the evaluation of left ventricular diastolic function by echocardiography: an update from the American Society of Echocardiography and the European Association of Cardiovascular Imaging. *Journal of the American Society of Echocardiography* 2016 **29** 277–314. (<https://doi.org/10.1016/j.echo.2016.01.011>)
- Hahn RT, Abraham T, Adams MS, Bruce CJ, Glas KE, Lang RM, Reeves ST, Shanewise JS, Siu SC, Stewart W, *et al.* Guidelines for performing a comprehensive transthoracic echocardiographic examination: recommendations from the American Society of Echocardiography and the Society of Cardiovascular Anesthetists. *Journal of the American Society of Echocardiography* 2013 **26** 921–964. (<https://doi.org/10.1016/j.echo.2013.07.009>)
- Olivares-Reyes A, Chan S, Lazar EJ, Bandlamudi K, Narla V & Ong K. Atrial septal aneurysm: a new classification in two hundred five adults. *Journal of the American Society of Echocardiography* 1997 **10** 644–656. ([https://doi.org/10.1016/S0894-7317\(97\)70027-0](https://doi.org/10.1016/S0894-7317(97)70027-0))
- Saeed S & Gerds E. *Echocardiography in Ischemic Stroke in Young Adults in Ischemic Stroke in the Young*, ch 10. Eds T Tatlisumak & L Thomassen. Oxford, UK: Oxford University Press, 2017.
- George MG, Tong X & Bowman BA. Prevalence of cardiovascular risk factors and strokes in younger adults. *JAMA Neurology* 2017 **74** 695–703. (<https://doi.org/10.1001/jamaneurol.2017.0020>)
- Saeed S, Waje-Andreassen U, Fromm A, Øygaard H, Kokorina MV, Naess H & Gerds E. Early vascular aging in young and middle-aged ischemic stroke patients: the Norwegian Stroke in the Young Study. *PLoS ONE* 2014 **9** e112814. (<https://doi.org/10.1371/journal.pone.0112814>)
- Ellensen VS, Saeed S, Geisner T & Haaverstad R. Management of thromboembolism-in-transit with pulmonary embolism. *Echo Research and Practice* 2017 **4** K47–K51. (<https://doi.org/10.1530/ERP-17-0043>)
- Kent DM, Ruthazer R, Weimar C, Mas JL, Serena J, Homma S, Di Angelantonio E, Di Tullio MR, Lutz JS, Elkind MSV, *et al.* An index to identify stroke-related vs incidental patent foramen ovale in cryptogenic stroke. *Neurology* 2013 **81** 619–625. (<https://doi.org/10.1212/WNL.0b013e3182a08d59>)
- Kent DM, Dahabreh IJ, Ruthazer R, Furlan AJ, Reisman M, Carroll JD, Saver JL, Smalling RW, Juni P, Mattle HP, *et al.* Device closure of patent foramen ovale after stroke: pooled analysis of completed randomized trials. *Journal of the American College of Cardiology* 2016 **67** 907–917. (<https://doi.org/10.1016/j.jacc.2015.12.023>)

- 23 Schuchlenz HW, Saurer G, Weihs W & Rehak P. Persisting eustachian valve in adults: relation to patent foramen ovale and cerebrovascular events. *Journal of the American Society of Echocardiography* 2004 **17** 231–233. (<https://doi.org/10.1016/j.echo.2003.12.003>)
- 24 Goel SS, Tuzcu EM, Shishehbor MH, de Oliveira EI, Borek PP, Krasuski RA, Rodriguez LL & Kapadia SR. Morphology of the patent foramen ovale in asymptomatic versus symptomatic

- (stroke or transient ischemic attack) patients. *American Journal of Cardiology* 2009 **103** 124–129. (<https://doi.org/10.1016/j.amjcard.2008.08.036>)
- 25 Hilberath JN, Oakes DA, Shernan SK, Bulwer BE, D'Ambra MN & Eltzhig HK. Safety of transesophageal echocardiography. *Journal of the American Society of Echocardiography* 2010 **23** 1115–1127; quiz 1220. (<https://doi.org/10.1016/j.echo.2010.08.013>)

Received in final form 18 April 2019

Accepted 14 June 2019

Accepted Manuscript published online 14 June 2019