

# Hepatic transcriptomic profiles from barramundi, *Lates calcarifer*, as a means of assessing organism health and identifying stressors in rivers in northern Queensland

Hook, SE, Kroon, FJ, Greenfield, PA, Warne, M, Smith, RA & Turner, RDR  
Author post-print (accepted) deposited by Coventry University's Repository

## Original citation & hyperlink:

Hook, SE, Kroon, FJ, Greenfield, PA, Warne, M, Smith, RA & Turner, RDR 2017, 'Hepatic transcriptomic profiles from barramundi, *Lates calcarifer*, as a means of assessing organism health and identifying stressors in rivers in northern Queensland' *Marine Environmental Research*, pp. (in press)  
<https://dx.doi.org/10.1016/j.marenvres.2017.05.006>

DOI 10.1016/j.marenvres.2017.05.006

ISSN 0141-1136

ESSN 1879-0291

Publisher: Elsevier

**NOTICE: this is the author's version of a work that was accepted for publication in *Marine Environmental Research*. Changes resulting from the publishing process, such as peer review, editing, corrections, structural formatting, and other quality control mechanisms may not be reflected in this document. Changes may have been made to this work since it was submitted for publication. A definitive version was subsequently published in *Marine Environmental Research*, [(in press), (2017)] DOI: 10.1016/j.marenvres.2017.05.006**

© 2017, Elsevier. Licensed under the Creative Commons Attribution-NonCommercial-NoDerivatives 4.0 International  
<http://creativecommons.org/licenses/by-nc-nd/4.0/>

Copyright © and Moral Rights are retained by the author(s) and/ or other copyright owners. A copy can be downloaded for personal non-commercial research or study, without prior permission or charge. This item cannot be reproduced or quoted extensively from without first obtaining permission in writing from the copyright holder(s). The content must not be changed in any way or sold commercially in any format or medium without the formal permission of the copyright holders.

This document is the author's post-print version, incorporating any revisions agreed during the peer-review process. Some differences between the published version and this version may remain and you are advised to consult the published version if you wish to cite from it.

1 Hepatic transcriptomic profiles from barramundi, *Lates calcarifer*, as a means of assessing organism  
2 health and identifying stressors in rivers in northern Queensland

3 Sharon E. Hook<sup>1,\*</sup>, Frederieke J. Kroon<sup>2</sup>, Paul A. Greenfield<sup>3</sup>, Michael St. J. Warne<sup>4,5,6,7</sup>, Rachael A.  
4 Smith<sup>5,6</sup>, Ryan D. R. Turner<sup>5,6</sup>

5

6 1 Commonwealth Scientific and Industrial Research Organisation (CSIRO) Oceans and Atmosphere,  
7 Kirrawee, NSW 2232, Australia

8 2 Australian Institute of Marine Science, PMB 3, Townsville Queensland 4810, Australia

9 3 CSIRO Oceans and Atmosphere North Ryde, New South Wales 2113, Australia

10 4 Centre for Agroecology, Water and Resilience, Coventry University, United Kingdom

11 5 Queensland Department of Science, Information Technology, and Innovation, Brisbane,  
12 Queensland 4001, Australia

13 6 Australian Rivers Institute, Griffith University, Queensland 4111, Australia

14 7 National Research Centre for Environmental Toxicology (EnTox), University of Queensland,  
15 Queensland 4108, Australia

16 \* Corresponding author, CSIRO Oceans and Atmosphere, Locked Bag 2007, Kirrawee, NSW 2232,  
17 Australia

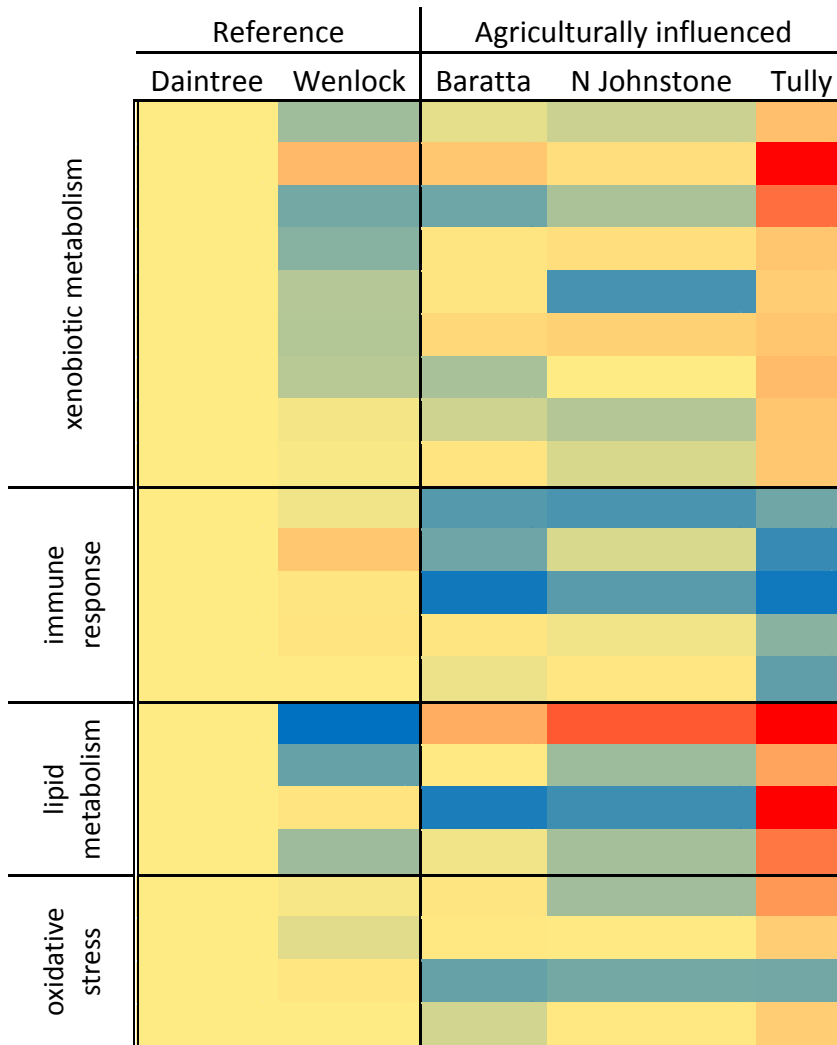
18 Sharon.Hook@csiro.au

19

20 **Abstract**

21 Resource managers need to differentiate between sites with and without contaminants and those  
 22 where contaminants cause impacts. Potentially, transcriptomes could be used to evaluate sites  
 23 where contaminant-induced effects may occur, to identify causative stressors of effects and  
 24 potential adverse outcomes. To test this hypothesis, the hepatic transcriptomes in Barramundi, a  
 25 perciform teleost fish, (*Lates calcarifer*) from two reference sites, two agriculturally impacted sites  
 26 sampled during the dry season, and an impacted site sampled during the wet season were  
 27 compared. The hepatic transcriptome was profiled using RNA-Seq. Multivariate analysis showed  
 28 that transcriptomes were clustered based on site and by inference water quality, but not sampling  
 29 time. The largest differences in transcriptomic profile were between reference sites and a site  
 30 sampled during high run-off, showing that impacted sites can be identified via RNA-Seq. Transcripts  
 31 with altered abundance were linked to xenobiotic metabolism, peroxisome proliferation and stress  
 32 responses, indicating putative stressors with the potential for adverse outcomes in barramundi.

33 Graphical Abstract:



34

35 **Highlights:**

- 36 • Fish were collected from catchments with different agricultural land use patterns
- 37 • The hepatic transcriptome differed with different land use and water quality
- 38 • Transcripts for exposure biomarkers were used to tentatively identify stressors
- 39 • Functional pathways could contribute to predictions of adverse health outcomes

40 **Keywords:**

41

42 Transcriptomics; RNA Seq; Barramundi; Great Barrier Reef; pesticides; herbicides; agricultural  
43 contamination

44 **1. Introduction:**

45 Few aquatic ecosystems are truly pristine. Many face increased pressure from modifications of  
46 waterways, changes in land-use patterns as a consequence of coastal development, industrial and  
47 agricultural discharges, introduced species and global climate change (Dafforn et al., 2012).  
48 Determining what impact, if any, these stressors are having on the health of key species or on  
49 ecosystem function as a whole can be challenging for resource managers, who often lack the logistic  
50 support to characterise every aspect of a system. Since many of the stressors in the system may  
51 interact, their behaviour in the field may not be easily predicted from laboratory-based studies. For  
52 example, the impact of stressors such as endocrine disrupting chemicals (EDCs) may not be apparent  
53 from traditional toxicity tests (Hook et al., 2014a). Resource managers need metrics to use, both to  
54 classify systems as “unimpacted” or “impacted” so that they can be prioritised for protection or  
55 remediation, as well as to identify the causative agents of any declines in either organism or  
56 ecosystem health.

57 Several metrics for classifying the health of ecosystems already exist. One of these is the index of  
58 biotic integrity (IBI), which measures the capacity of an area to sustain populations of organisms  
59 with comparable composition, diversity, and function to natural areas within the same system.  
60 These comparisons are done by comparing the composition and biomass of selected taxa from  
61 impacted and unimpacted sites (Hughes et al., 1998; Bilkovic et al., 2006). This approach has been  
62 effectively used in a variety of systems (e.g. Hughes et al., 1998; Mebane et al., 2003; Bilkovic et al.,  
63 2006; An et al., 2002). However, this approach has disadvantages in that it cannot convey causal  
64 relationships between anthropogenic or natural stressors and changes in biotic integrity (Hughes et  
65 al., 1998). Also, this metric must be developed independently for each system in which it is intended  
66 to be used, and intensive field sampling, as well as in-depth prior knowledge of ecosystem  
67 composition and function, are required (Hughes et al., 1998).

68 Individual biomarker-based responses in fish have been used to differentiate between impacted and  
69 unimpacted sites (reviewed in Hook et al., 2014a), for example vitellogenin (Jobling and Tyler, 2003;  
70 Kroon et al., 2015a; Sumpter and Jobling, 1995) or the condition of gonads (Blazer et al., 2014), both  
71 of which were used to infer exposure to EDCs and the potential for impacts on reproduction.  
72 Vitellogenin, cytochrome p450 1A, biliary Fluorescent Aromatic Compounds, DNA damage, and  
73 histology have also been used to indicate exposure to sewage borne contaminants near waste water  
74 outfalls in Orange County, CA, USA (Roy et al., 2003). However, choosing the appropriate biomarker-  
75 based assay requires knowledge of the causative agent of toxicity and in some cases a change at the  
76 molecular level may be difficult to link to population level outcomes (reviewed in Hook et al., 2014a).

77 DNA metabarcoding has also been used recently to classify systems as being more or less degraded  
78 (e.g. Chariton et al., 2010; Baird and Hajibabaei, 2012; Dafforn et al., 2014; Gibson et al., 2015).  
79 While this approach has the advantage of being high throughput and taking more of a “whole  
80 ecosystem” approach (Dafforn et al., 2014; Gibson et al., 2015; Chariton et al., 2015), it only reports  
81 on the presence or absence of organisms, nothing about their condition, so these approaches cannot  
82 act as “early warning” of impending species loss. Further, while there are approaches to correlate  
83 changes in species abundance with environmental parameters (Chariton et al., 2015), it can be  
84 difficult to determine causality as many these parameters co-vary, such as increased nutrient levels,

85 decreased oxygen levels and increased micropollutants (as per Luo et al., 2014) that would all be  
86 expected to be found near sewage treatment plants (Dafforn et al., 2014).

87 Here, we hypothesise that the transcriptome of a selected species could be used to not only classify  
88 ecological sites as comparatively pristine or impacted, but also to identify potential causative agents  
89 of changes in organism physiology. Since all transcripts are profiled, this approach does not require  
90 a priori knowledge of the stressor or its modes of action. Since there is a vast amount of literature  
91 on gene expression and ecotoxicology (Hook, 2010; Bahamonde et al., 2016;), transcripts that are  
92 indicative of exposure to specific contaminants or classes of contaminants, such as those that  
93 correspond to established exposure biomarkers (Hook et al., 2014a), could be identified. Also,  
94 changes in the transcriptome could be used to identify potential population level impacts, via the  
95 adverse outcome pathway concept (Ankley et al., 2010). A transcriptomic approach has been used  
96 successfully in prior studies. For example, caged fathead minnow have been used to profile  
97 differences in microarray based gene expression profiles due to agricultural land use patterns in  
98 Nebraska, USA, watersheds (Jeffries et al., 2012). Multivariate models of microarray--based gene  
99 expression fingerprints have also been used to predict the causative agent of toxicity in flounder  
100 collected from contaminated sites in the United Kingdom (Falciani et al., 2008). In addition, qPCR  
101 based transcriptional profiles have been used to predict the health outcomes of steelhead  
102 *Oncorhynchus mykiss* from the Columbia River basin (Connon et al., 2012). However, both of these  
103 approaches require prior knowledge of the genome sequence of the organism being studied, which  
104 is frequently not available for non model organisms, especially in Australia. Instead, we used RNA  
105 Seq to characterise the transcriptome (reviewed in Mehinto et al., 2012). RNA Seq, where  
106 transcripts are reverse transcribed into cDNA libraries and quantified directly, has the advantage of  
107 being able to be performed on organisms with an uncharacterised genome (Mehinto et al., 2012;  
108 Hook et al., 2014b) and has a greater dynamic range than either qPCR or microarray hybridisation  
109 (Tarazona et al., 2011).

110 To test the hypothesis that the transcriptome would indicate the presence of stressors in an  
111 organism's habitat, the hepatic transcriptome of fish collected from different rivers in tropical North  
112 Queensland was examined. Most of the study sites discharge into the Great Barrier Reef (GBR).  
113 Some rivers in the system, including those included in this study, have poor water quality principally  
114 due to increased loads of nutrients, sediment, and pesticides arising from agricultural land use  
115 (reviewed in Brodie et al., 2012; Kroon et al., 2012; Smith et al., 2012). Rainfall in this area is  
116 typically very seasonal, with frequent, heavy rain in November through March, and much lower  
117 amounts the rest of the year. Concentrations of pesticides and other water quality related stressors,  
118 such as sediments and high nutrient load, are typically highest during the rainy season (Smith et al.,  
119 2012; Davis et al., 2012). Furthermore, aqueous concentrations of some stressors, such as diuron,  
120 atrazine, terbuthiuron and metolachlor, are frequently measured above water quality guidelines  
121 (Lewis et al., 2012; Smith et al., 2012). Concentrations of water soluble pesticides, such as atrazine  
122 and imidacloprid, are typically below detection during the dry months. However, it is uncertain  
123 whether elevated concentrations of stressors are sufficiently high to cause changes in the physiology  
124 of fish species (Kroon et al., 2015a). In addition to changes in water quality, these watersheds have  
125 been modified by changes in land use patterns, (e.g. deforestation, altered biogeochemical cycles),  
126 which could have impacts on aquatic food webs, and as a consequence, fish health (Jeffrey et al.,  
127 2015). We postulated that changes in the transcriptome that were a result of declining water quality  
128 would be most apparent in fish collected from agriculturally impacted watersheds during the wet

129 season, whereas those that resulted from persistent contaminants or habitat changes would be  
130 apparent in all seasons.

131 In this paper, three hypotheses were tested: 1) that the hepatic transcriptome would differ between  
132 impacted and reference sites; 2) that the changes in the transcriptome would indicate seasonal  
133 stressor exposure; and 3) that changes in the transcriptome would contain transcripts for known  
134 contaminant exposure biomarkers (e.g. Hook et al., 2014a) that could be used to help identify  
135 putative causative stressors and other transcripts to could be related to physiological changes that  
136 might link to potential adverse outcomes. The study extended previous work examining changes in  
137 vitellogenin and aromatase levels in field-collected fish (Kroon et al., 2015a) and an initial survey of  
138 differences in global transcriptomic patterns at comparatively impacted (the Tully River) and a  
139 reference site (the Daintree River) (Hook et al., 2017). The previous study found large differences in  
140 the transcriptomic patterns, but we could not be certain that these were not just variability between  
141 different sites. We also could not be certain that the changes we measured in the previous study  
142 were related to water quality and not habitat modification. To address some of these uncertainties,  
143 this study examined an additional reference site but in this study two additional sites were examined  
144 during the dry season when the contaminant concentrations were expected to be low based on  
145 previous monitoring studies (Lewis et al., 2009) and the same two sites previously used by Hook et  
146 al. (2017). We used known exposure biomarkers in the transcriptomes and functional pathways with  
147 altered transcriptome abundance to identify sites and potential causative agents.

148

## 149 **2. Materials and methods:**

### 150 *2.1 Study organism*

151 Barramundi (*Lates calcarifer*) (Bloch) (Family Latidae), a perciforme teleost fish, is of cultural  
152 importance to Australia's aboriginal peoples, and is fished extensively recreationally and  
153 commercially (Kailola et al., 1993). In northern Australia, barramundi lives in river and estuarine  
154 habitats. In northeast Queensland, they spawn near the mouths of estuaries prior to and during the  
155 start of the wet season, between November and January. Larval barramundi are found in coastal  
156 wetlands after December, with some migrating further upstream into freshwater habitats between  
157 March and June. The species is protandrous hermaphrodite, with juveniles maturing as males  
158 >250 mm total length (TL) in the first 2–4 years, and changing into females in the 680–900 mm TL  
159 size range.

160

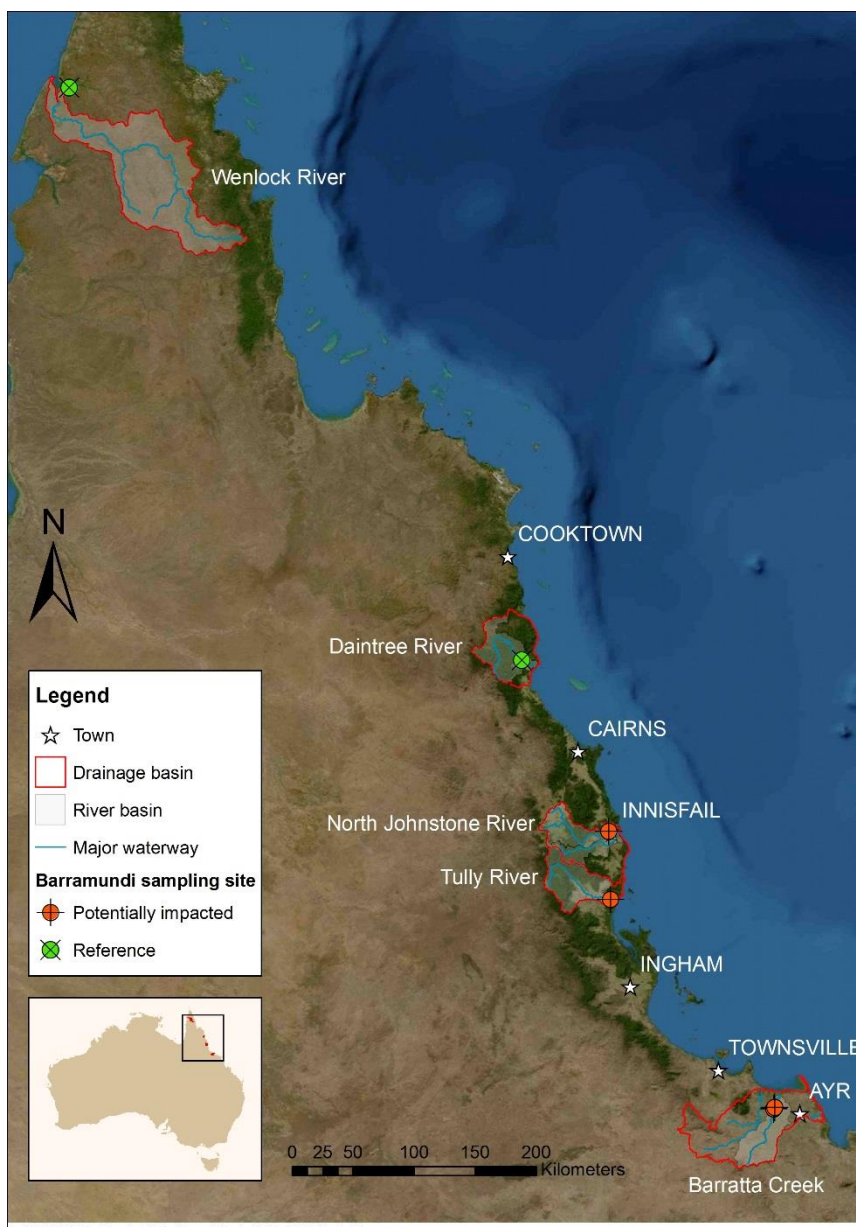
### 161 *2.2 Study site description*

162 The five catchments from which barramundi were collected are located in North Queensland,  
163 Australia (Figure 1). These catchments differ in surface area, land uses, mean annual flow and river  
164 loads of sediment, nutrients and pesticides (Table 1). In the catchments of the two reference rivers  
165 agricultural land use is either completely absent (Wenlock) or covers a relatively small area (7%,  
166 Daintree). In contrast, agricultural land uses cover relatively larger areas in the Tully, North  
167 Johnstone and Barratta catchments, with horticulture crops (primarily bananas) and sugarcane being  
168 cultivated on the coastal floodplains. Conservation land use occupies large areas of the upper

169 catchments in the Daintree, North Johnstone and Tully Rivers. All rivers are perennial, with most of  
170 the discharge occurring during the summer wet season (December – April). River pollutant loads of  
171 sediment and nutrients to the GBR lagoon have increased substantially since European settlement in  
172 the 1850s (Kroon et al., 2012; Waters et al., 2016), with increases particularly evident in the North  
173 Johnstone, Tully and Barratta. In addition, over 50 pesticides have been detected in these three  
174 rivers, with substantial loads of pesticides being transported to the GBR lagoon every year (Waters  
175 et al., 2016).

176





178

179 Figure 1. Barramundi collection sites. Drainage basins are outlined in red.

180 Green spots indicate reference sites, whereas red spots indicate potentially impacted sites.

181 Table 1. Catchment information for collection sites of barramundi (*Lates calcarifer*). Catchment surface area, mean annual discharge, main land uses, and  
 182 river pollutant loads are given. TSS is total suspended sediment, TN is total nitrogen, TP is total phosphorus, and PSII herbicides is photosystem II herbicides.  
 183 PSII herbicide load is expressed as the annual toxicity-based herbicide loads (diuron equivalent loads, Escher et al., 2008). Land use data was taken from  
 184 Kroon et al., (2015); river pollutant loads from Waters et al. (2014).

River	Catchment surface area (km <sup>2</sup> )	Main land uses (% of total catchment area)					Long-term mean annual discharge (GL)	River pollutant loads			
		Conser- vation	Forestry	Grazing	Horti- culture	Sugar- cane		TSS (t km <sup>-2</sup> )	TN (kg km <sup>-2</sup> )	TP (kg km <sup>-2</sup> )	PSII herbicides (kg y <sup>-2</sup> )
Wenlock~	7,525	64	<1	33	<1	<1	3,200 <sup>d</sup>	Not measured	Not measured	Not measured	Not measured
Daintree	2,107	67	23	10	<1	2	925 <sup>~</sup>	29	642	45	Not measured
North Johnstone	2,325	53	<1	40	<1	1	1,800	150	1,100	290	79
Tully	1,683	72	2	5	<1	13	3,100	67	1,100	100	270
Barratta (Haughton)	4,051	0	<1	73	<1	25	160	10	240	25	38

185 ~ based on long term monitoring from 108002A Daintree River at Bairds, note this will be an underestimate of total discharge from the basin

186

187 .

188 *2.3 Fish collections*

189 Barramundi were collected using monofilament gill nets (50 mm stretched mesh) in 2011 or 2012 via  
 190 purse seining, where fish were captured and immediately transferred to a water bath containing  
 191 anaesthetic (Kroon et al., 2015a) with the approval of the CSIRO Sustainable Ecosystems animal  
 192 ethics committee (permit #13-12) (Table 2). All fish collected were immature or mature males, and  
 193 smaller than the smallest length at which female gonadal features are first recognizable (680 mm TL;  
 194 Kailola et al., 1993), Fish were anaesthetised with clove oil (Kroon, 2015), then sacrificed by gill  
 195 slitting and cervical dislocation. Fish were immediately measured (mm, total length, TL), weighed  
 196 (g), then liver tissues were collected and small samples preserved in *RNA later*<sup>®</sup> (Ambion). Samples  
 197 were kept on ice until delivery to the laboratory then stored at -20°C until further processing.

198 Table 2. Collection information for barramundi (*Lates calcarifer*).

Collections		Classification				Fish	
Rivers	Dates	Status	Season	Number of fish	Size range (mm, TL)	K <sup>1</sup> (x 10 <sup>-3</sup> )	Sample ID
Wenlock	23/04/2012	Reference	Changing towards dry	5	357–492	1.1–1.3	WC2–4; 55, 56
Daintree	22/03/2011	Reference	Wet	6	295–460	1.0–1.2	2–7
North Johnstone	27/06/2011	Impacted	Dry	5	192–350	1.0–1.2	402–406, 408
Tully	23/03/2012	Impacted	Wet	8	264–445	1.1–1.2	97–104
Barratta	25/05/2011	Impacted	Dry	6	240–421	1.0–1.2	353–355, 358–360

199 <sup>1</sup> Fulton’s condition index (K) was calculated as per Froese et al. (2006).

200 *2.4 RNA extraction*

201 The workflow used during the RNA-Seq experiment is described in Hook et al (2017) (Fig. S1). RNA  
 202 was extracted as described previously (Kroon et al., 2014; Kroon et al., 2015a;). Briefly,  
 203 approximately 20 mg of liver tissue was immersed in TRIzol<sup>®</sup> (Invitrogen) reagent, homogenized  
 204 using MP Biomedical<sup>®</sup> bead beater and lysing matrix E tubes, then extracted following the TRIzol<sup>®</sup>  
 205 protocol through the removal of the aqueous phase. The RNA was subsequently purified using the  
 206 Ambion Purelink kit After extraction, the TURBO DNA free<sup>®</sup> (Ambion) kit was used to eliminate  
 207 genomic DNA contamination. RNA purity was determined using a nanodrop spectrophotometer  
 208 (260/280 ratio greater than 2.0) and integrity determined using an Agilent bioanalyzer<sup>®</sup> (RIN greater  
 209 than 7.0).

210 *2.5 Sequencing*

211 Libraries for sequencing were created from hepatic RNA from each fish in Table 2 as an individual  
212 (samples were not pooled). Sequencing for this project was performed at the Australian Genome  
213 Research Facility. Briefly, cDNA synthesis and library preparation was carried out using a starting  
214 template concentration of 1 µg RNA. Illumina's TruSeq stranded mRNA sample preparation was  
215 used and the manufacturer's protocol was followed. The samples were run on an Illumina HiSeq  
216 2000 with 100 base pair reads. The sample reads were deposited in the CSIRO data access portal and  
217 at NCBI at PRJNA352735 (SRP093513). Data are also available via the CSIRO data access portal at  
218 <http://doi.org/10.4225/08/583766535a240>.

## 219 *2.6 Quality Assessment and Read Mapping*

220 The Trimmomatic algorithm (Bolger et al., 2014) on the CSIRO instance of Galaxy (Goecks et al.,  
221 2010) was used to filter reads for quality (Figure S1). Sequences were trimmed on a sliding window,  
222 with a window size of 20 bases, a minimum quality score of 20 (Blankenberg et al., 2010) and the  
223 number of bases to exclude set to 1. Read mapping against the whole barramundi transcriptome  
224 derived in Hook et al. (submitted) (PRJNA290400) was performed using Bowtie (Langmead et al.,  
225 2009) and quantified using the RSEM abundance estimation algorithm (Li and Dewey, 2011) with the  
226 aid of scripts provided with Trinity (Grabherr et al., 2011; Haas et al., 2013); (r2014\_04\_13). The  
227 numbers of total reads and mapped reads for each individual fish are in Table S1.

## 228 *2.7 Differential Expression Analysis*

229 Data (from both this and the previous study, Hook et al., 2017) were loaded into CLC Genomics  
230 workbench version 8.0.3 for differential expression analysis. The previously published data were  
231 included to expand the number of sites surveyed, and to ensure that more than one reference site  
232 was examined. The previous data had a greater sequencing depth (22–31 M reads per sample) than  
233 the current study did (12–14 M reads per sample). To account for differences in overall number of  
234 reads per sample, FPKM (fragments per kilobase of transcript per million mapped reads) normalised  
235 values were used in all subsequent analysis. Transcripts that did not have an average FPKM value of  
236 one across all treatments were discarded to eliminate problems with false positives associated with  
237 low read abundances (Tarazona et al., 2011). A total of 18,031 transcripts were included in the  
238 differential abundance analysis. Approximately 95% of mapped reads (or 137.4 million reads  
239 overall) mapped to these 18,031 contigs. Differential expression was calculated using Gaussian  
240 statistics, with an FDR rate of 0.05.

## 241 *2.8 Annotation*

242 In addition to annotating with BLAST2GO, as described previously (Hook et al., 2017), the  
243 differentially abundant transcript lists were annotated by BLAST against the *Oreochromis niloticus*,  
244 another perciforme fish, Ref Seq transcriptome, downloaded from NCBI on March 2, 2016 with an e  
245 value cut off of  $1e^{-5}$ . Both annotations are included in lists of differentially expressed genes for  
246 completeness. Differentially abundant contigs (putative transcripts assembled from sequencing  
247 reads) were also BLASTx searched with an evalue cut off of  $1e^{-5}$  against the UniProtKB/Swiss-prot  
248 database using the CSIRO instance of Galaxy, their closest orthologue (or best match) identified, and  
249 submitted to DAVID against a background of all contigs with the minimum read count subjected to  
250 the same search criteria (Huang et al., 2009) for further functional annotation. Functional pathways  
251 were also annotated by analysis against KEGG pathways in BLAST2GO (Conesa et al., 2005).

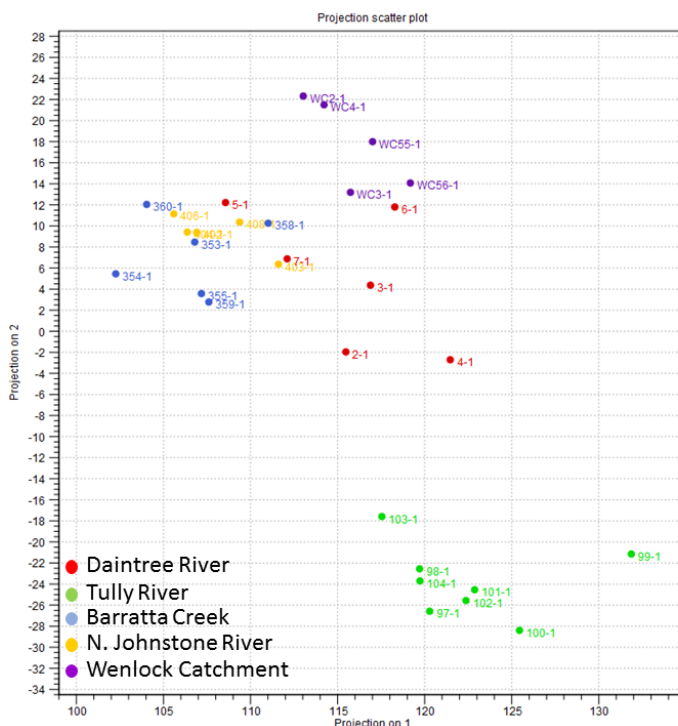
252 3. Results

253 3.1 Sequencing results

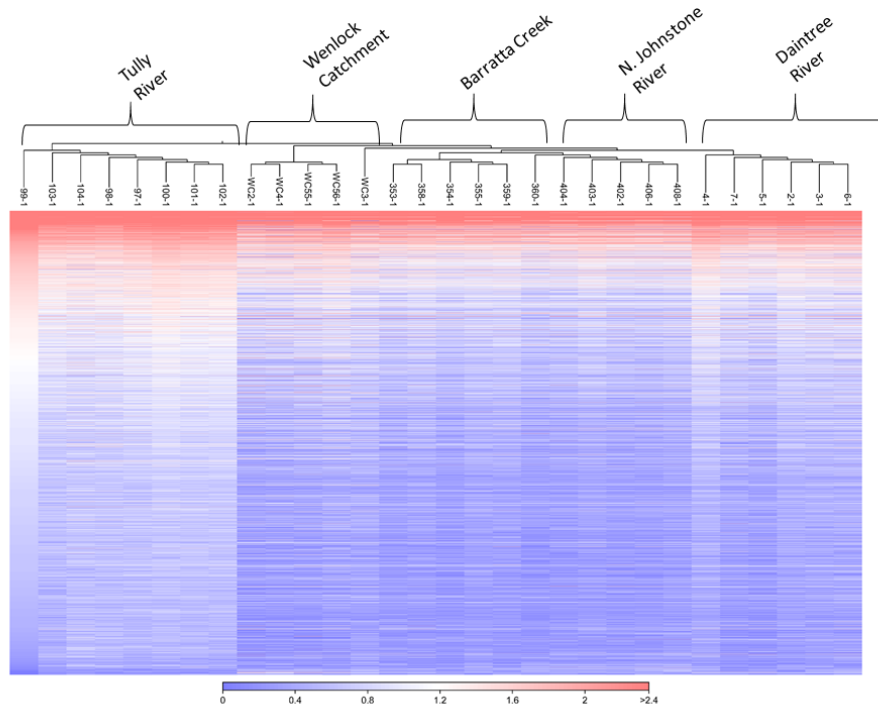
254 The Illumina 2500 HiSeq run generated 241 million reads. Once the reads were trimmed to remove  
255 the first base pairs that are non-random due to primer bias, virtually all reads were of sufficient  
256 quality to be used in mapping (Table S1). The number of reads per sample was lower in this study  
257 (12–14 million) than in our previous study (25–31 million) because the number of samples  
258 multiplexed per sequencing lane was higher in this study (16) than in the previous (14). The  
259 percentage that mapped in this study (53–64%), with the exception of one sample, was higher than  
260 the previous study (40–48%), despite the fact that the same Perl script and mapping algorithm were  
261 used. To account for these differences in read number and percent mapping, FPKM-corrected values  
262 were used in all subsequent analyses. Since large fold changes in low abundance transcripts are  
263 often artificial, only contigs with an average FPKM of one in at least one condition were considered.  
264 A total of 18,031 transcripts met this condition.

265 3.2 Transcriptomic profiling

266 The reads were mapped onto a previously developed transcriptome (Hook et al., submitted) which is  
267 available via the CSIRO DAP available via the CSIRO data access portal  
268 (<http://doi.org/10.4225/08/583b5570b27e5>). Briefly, that transcriptome contains 102,061 contigs.  
269 27891 ORFs could be extracted from these contigs, representing coding sequences. Of these  
270 transcripts, 27,034 (96.9%) have an orthologue in the BLAST database. The read mapping revealed  
271 differences in the transcriptomic profiles between different fishes (Figure 2). There are large  
272 differences in the hepatic transcriptomes of fish collected from the Tully River relative to fish  
273 collected from other sites. These trends are also apparent if the data are visualised using  
274 hierarchical clustering (Figure 3) instead of PCA. If data are input based on the size of the fish  
275 collected or the date the fish was collected, no clear clusters are apparent (Figures S2 and S3).



277 Figure 2. Principal components based visualisation of the plus one, log 10-transformed hepatic  
278 transcriptome based on site where the fish was collected. Each dot represents an individual fish.



279

280 Figure 3. Hierarchical clustering algorithm showing relationships between the hepatic transcriptome  
281 of barramundi collected from different sites. Only transcripts with significantly different abundances  
282 relative to both reference sites are plotted. The colour bar indicates +1 log transformed FPKM read  
283 count.

284

### 285 3.3 Differentially Abundant Transcripts

286 There were more differentially abundant transcripts in the transcriptome of barramundi collected  
287 from the Tully River compared to either Barratta Creek or the North Johnstone River (Table 4).  
288 These transcripts, their closest orthologue as determined via BLAST against the *Oreochromis*  
289 *niloticus* Ref Seq transcriptome, their mean abundances (as FPKM) in fish from each river, are  
290 presented in Table S2. The Venn diagram shows little overlap amongst the transcripts differentially  
291 abundant in each river (Figure S4).

292

293 Table 4. Matrixes showing the number of transcripts with significantly different abundances for each  
 294 comparison, relative to a total number of 18,031 transcripts.

295 By site:

Reference sites	Impacted sites			Reference Sites	
	Tully River	North Johnstone River	Barratta Creek	Daintree River	Wenlock River
Daintree River	4974	1846	817	-	84
Wenlock River	6964	4037	3591	88	-
Both	2610	303	861	-	-

296

297

298 Differences in the transcriptome in fish of different size were difficult to discern, as the main  
 299 differences were between fish captured at different sites (Figure S2). When the transcriptome was  
 300 compared by date collected, the patterns were compounded by site (Figure S3).

301 *3.4 Functional Annotation of Differentially Abundant Transcripts*

302 Transcripts for the pathway of excretion of xenobiotic compounds, which are established biomarkers  
 303 for exposure to organic contaminants, were elevated in fish from the agriculturally impacted North  
 304 Johnstone, Tully, and Barratta relative to the Daintree and Wenlock rivers (Figures 4A –C).

305 Transcripts encoding pesticide and nicotine-metabolising enzymes (cytochrome p450 2J,(CYP2J) a  
 306 Phase I oxidoreductase, and multiple isoforms of glutathione S transferase (GST) and UDPGT (uridine  
 307 diphosphate glucuronosyltransferase), conjugating enzymes involved in phase II metabolism), are all  
 308 significantly more abundant in fish from the Tully River relative to all other rivers (Figures 4 A and B  
 309 respectively). Transcripts encoding ATP binding cassettes (ABC transporters), which excrete  
 310 xenobiotic compounds from cells, were also more abundant in the hepatic transcriptomes of fish  
 311 from the Tully River (Figure 4C).

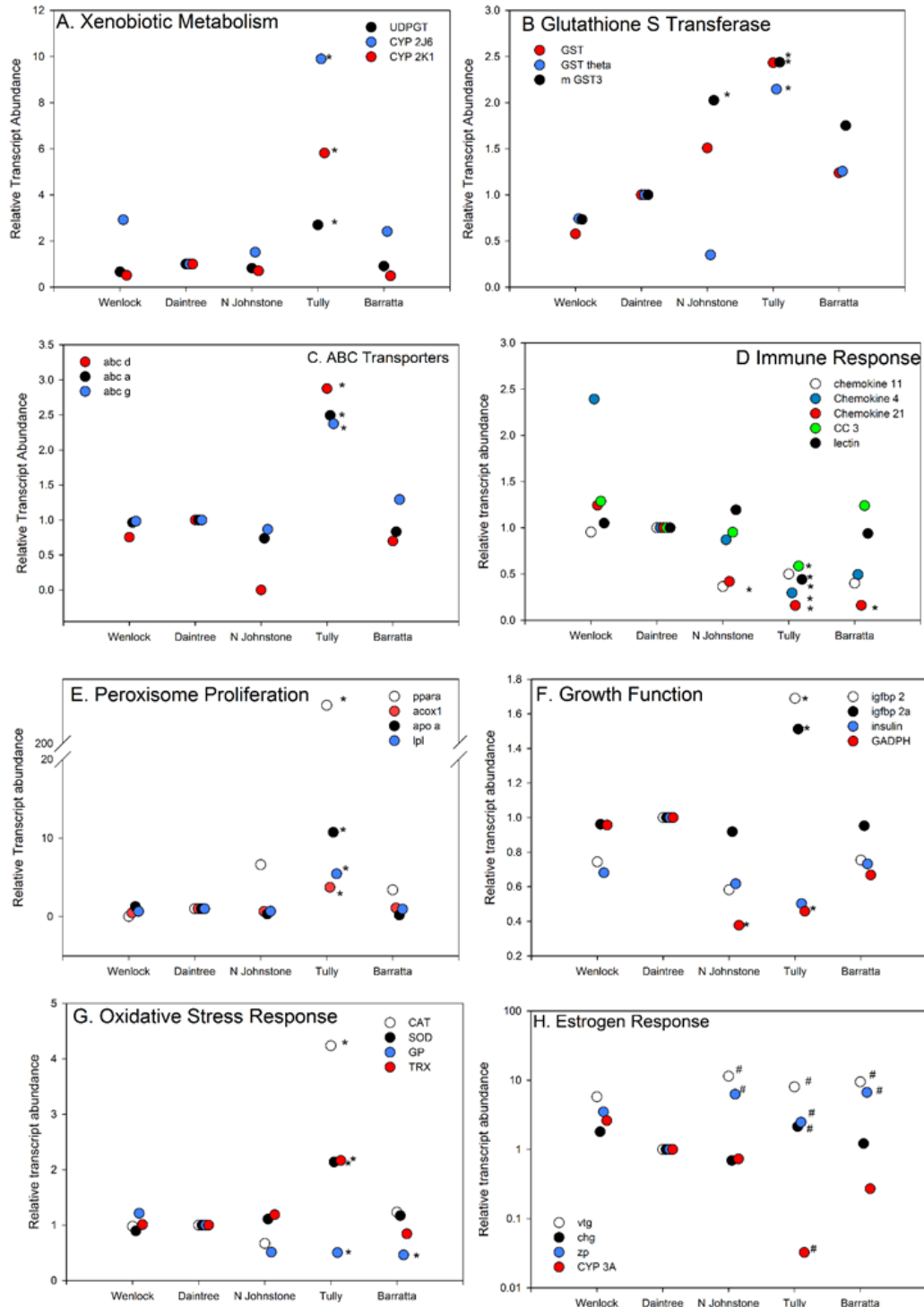
312 As reported previously (Hook et al., 2017), barramundi transcripts encoding gene products with an  
 313 immune related function were less abundant in fish from the agriculturally intensive rivers, the  
 314 North Johnstone, Tully and Barratta relative to the Daintree and Wenlock rivers (Figure 4D).  
 315 Chemokines, chemokine receptors, granzyme and t cell receptors encoding transcripts are all less  
 316 abundant in fish collected from the North Johnstone, Tully and Barratta compared to the Daintree  
 317 and Wenlock (Figure 4D and Table S2). A large number of transcripts encoding enzymes involved in  
 318 the metabolism of energy stores (lipid, protein or carbohydrate) were elevated in the livers of fish  
 319 collected from the Tully River, as reported previously (Hook et al., 2017), but not from the North  
 320 Johnstone and Barratta (Figure 4E and Table S2). These transcripts encoded peroxisome proliferator

321 activated receptor (PPAR) alpha, tyrosine aminotransferase, long-chain fatty acid ligase (lpl), and  
322 apolipoproteins (apo - lipid binding proteins). Growth function genes, such as insulin-like growth  
323 factor binding factor protein (igfbp), and Glyceraldehyde 3-phosphate dehydrogenase (GAPDH), had  
324 altered abundance in the Tully River when compared to the other rivers (Figure 4F). Transcripts  
325 encoding leptin, the satiety hormone, was less abundant in the Tully River compared to other sites  
326 (Table S2). Oxidative stress related transcripts, catalase (CAT), heme oxygenase (HO) and superoxide  
327 dismutase (SOD), were also measured in increased abundances in the transcriptomes of fish  
328 collected from the Tully River only (Figure 4G).

329 Transcripts encoding estrogen responsive gene products such as *vtg* and the zona pellucida (zp)  
330 proteins were elevated in all rivers relative to the Daintree River (Figure 4H) , although not to the  
331 Wenlock Catchment – the other reference site. Transcripts involved oogenesis including vitellogenin  
332 were elevated in the North Johnstone, Tully and Barratta, while transcripts encoding the egg  
333 membrane proteins were elevated in the Tully and Barratta. Cytochrome p450 3A (CYP3A)  
334 transcripts were less abundant in fish from the Tully and Barratta compared to the Daintree and  
335 Wenlock.

336 The majority of transcripts with differential abundance between the two reference sites could not be  
337 annotated, making their functional significance difficult to discern. However, several ATPases were  
338 approximately 5 fold more abundant in the transcriptomes of barramundi collected from the  
339 Wenlock catchment relative to the Daintree River. Not enough of the transcripts with differential  
340 abundance between reference sites could be sufficiently annotated to allow for mapping to  
341 functional pathways.





342

343 Figure 4. Mean transcript abundance for fish collected from each river, relative to the mean  
 344 abundance in the hepatic transcriptome of fish from the Daintree River (chosen because of the  
 345 larger samples size) of selected transcripts in different functional categories. Panel A: xenobiotic  
 346 metabolising enzymes; B: s glutathione S transferases C: ABC transporters; D: immune function  
 347 transcripts; E the peroxisome proliferator activated receptor alpha pathway; F growth function  
 348 transcripts; G: transcripts for oxidative stress response genes and panel H shows estrogen  
 349 responsive transcripts\* indicate statistical significance FDR corrected  $p < 0.05$  from both the Daintree

350 and Wenlock values, # indicates statistical significance from the Daintree fish only. Standard  
 351 deviations are not shown for clarity. Data are slightly offset so that all symbols are visible.

352

353 *3.5 Alignment of Differentially Expressed Transcripts to Functional Pathways*

354 Because comparatively few contigs had an orthologue in the UniProt\_Swiss Prot database, as  
 355 identified via a BLASTx search, the DAVID functional annotation platform (Huang et al., 2009)  
 356 identified very few functional categories that were significantly enriched amongst the differentially  
 357 abundant transcripts (Table 5, Table S3). Transcripts involved in protein tagging (phosphoproteins)  
 358 and alternative splicing, as well as hydrolases, were most significantly enriched (lowest p value ,  
 359 Benjamani Hochberg multiple test correction) in fish from the Tully River (Table S3). Transcripts  
 360 involved in disease, lipid metabolism and oxido-reductase activity were also significantly different (p  
 361 value <0.05 , Benjamani Hochberg multiple test correction) (Table 5). Immune-related transcripts,  
 362 including chemokines and cytokines, had decreased abundance in the transcriptomes of fish  
 363 collected from the Tully River (Table 5 and S3). No functional groups were significantly enriched  
 364 amongst those transcripts with increased abundance in the North Johnstone River or Barratta Creek,  
 365 and only cell adhesion was significantly enriched among the transcripts that were less abundant in  
 366 fish from the North Johnstone River (Table 5 and S3). In Barratta Creek, Pleckstrin homology (cell  
 367 signalling) and GTPase activity were the only functional categories significantly less abundant in the  
 368 transcriptome at that site (Table 5 and S3).

369 Table 5. A summary of the results of DAVID and KEGG pathways functional mapping. Full results  
 370 (including counts and p values) are given in Tables S3 and S4.

River	Relative abundance compared to the reference sites	Pathway	Evidence from
Tully	More abundant	Hydrolase, transferase, oxidoreductase, lipid metabolism	DAVID
		Lipid metabolism, glycolysis, glutathione metabolism, amino acid metabolism, Metabolism of xenobiotics by cytochrome P450, Steroid hormone biosynthesis	KEGG

	Less abundant	Chemokines (immune related transcripts)	DAVID
		glycolysis, amino acid metabolism	KEGG
N Johnstone	More abundant	N.A.	
	Less abundant	Cell adhesion	DAVID
Barratta Creek	More abundant	N.A.	
	Less abundant	GTPases, actin binding	DAVID
		Glycolysis / gluconeogenesis, cell signalling pathways	KEGG

371 N.A., not applicable, no significantly enriched functional categories were identified.

372

373 As with the DAVID analysis, comparatively few of the differentially abundant contigs could be  
374 assigned an enzyme code, which is required for mapping to KEGG pathways. Nevertheless, a few  
375 trends were apparent from this analysis, as summarised in Table 5. More transcripts that were  
376 differentially abundant in the hepatic transcriptomes of Tully River fish could be mapped than the  
377 other impacted or reference collection sites. As discussed previously (Hook et al., 2017), transcripts  
378 that were more abundant in the hepatic transcriptomes of fish collected from the Tully River could  
379 be mapped to a variety of pathways, including fatty acid degradation, glycolysis, metabolism of  
380 xenobiotics via cytochrome p450, and steroid hormone biosynthesis (Table 5 and S4). Some of the  
381 transcripts that were less abundant in the hepatic transcriptome of fish from the Tully could be  
382 mapped to oxidative phosphorylation, the metabolism of different amino acids, and glycolysis (Table  
383 5 and S4). By comparison, far fewer KEGG pathways were identified in the transcripts from the  
384 other impacted rivers. Few transcripts with increased abundance that could be mapped to KEGG  
385 pathways were observed in the hepatic transcriptomes from fish from North Johnstone River and  
386 Barratta Creek. KEGG pathways for the metabolism of simple sugars such as galactose, starch and  
387 pentose were less abundant in fish from the North Johnstone, whereas fish from Barratta Creek had  
388 fewer transcripts involved in oxidative phosphorylation, T cell receptor signalling and the oxidation  
389 of simple sugars (Table 5 and S4).

#### 390 4. Discussion

391 In this study, we used the hepatic transcriptomic profiles of barramundi from rivers with different  
392 land use patterns collected during the dry (low run off) and wet (high run off) seasons both to (i)  
393 differentiate between impacted and reference sites; (ii) determine the extent to which the  
394 transcriptome reflected seasonal changes in water quality; and (iii) identify potential stressors in  
395 these systems using transcripts encoding known exposure biomarkers. Overall, the largest

396 differences in the global hepatic transcriptome were in barramundi from the Tully River collected  
397 during the wet season, demonstrating that the transcriptome can be used to identify impacted sites,  
398 supporting the first hypothesis. Compared to the Daintree catchment (a reference site), where  
399 barramundi were also collected during the wet season, the Tully (an impacted site) contains more  
400 sugarcane and horticulture upstream of the collection site than the Daintree collection site (Waters  
401 et al., 2016). Barramundi collected from the Tully River during the wet season had more differences  
402 in their transcriptomes relative to the two reference catchments and to those collected from the  
403 two other agriculturally impacted catchments (i.e., North Johnstone and Barratta) during periods of  
404 low run off, when pollutant levels are lower, supporting the second hypothesis. Few differences in  
405 the transcriptome could be attributed to wet versus dry season overall (e.g. pooling both reference  
406 and impacted areas) or attributed to different sequencing runs.

#### 407 *4.1 Transcripts for xenobiotic metabolising enzymes*

408 Xenobiotic metabolising enzymes are commonly used, well established exposure biomarkers, and  
409 increases in their transcription levels can be used to surmise exposure to pharmacologically relevant  
410 doses of their substrate (Schlenk et al., 2008, Hook et al., 2014). The presence of these exposure  
411 biomarkers in the transcriptome can assist with putative stressor identification and thus supports  
412 the third hypothesis. Xenobiotics are often metabolised in a three phase pathway (Livingstone, 1991;  
413 Schlenk et al., 2008). The first phase occurs via oxidation, typically performed by a member of the  
414 cytochrome p450 family (Schlenk et al., 2008). Transcripts encoding CYP 2j and k transcripts of  
415 enzymes that metabolise pesticides in fish (Haasch et al., 1998; Lemaire et al., 2004) and nicotine in  
416 mammals (Hukkanen et al., 2005) were elevated in the hepatic transcriptomes of fish from all the  
417 agriculturally impacted sites compared to the reference sites – but only significantly ( $p \leq 0.05$ ) in the  
418 fish from the Tully River. The second phase of metabolism is glucuronidation, which is often  
419 performed by a member of the GST family (Schlenk et al., 2008). Different transcript isoforms of GST  
420 were significantly ( $p \leq 0.05$ ) more abundant in fish collected from the Tully River than the reference  
421 sites, although some contigs were elevated in fish from all agriculturally impacted rivers, which  
422 suggests exposure to lower levels of pesticides year round, consistent with the known patterns of  
423 contamination (e.g. Lewis et al., 2009) or another oxidative stressor. Exposure to atrazine is known  
424 to induce GST in fish (Egaas et al., 1993; Wiegand et al., 2000). Transcripts of UDPGT are also more  
425 abundant in fish from the Tully River, and like CYP2 proteins they are also involved in the  
426 metabolism of nicotine (Hukkanen et al., 2005) and potentially neonicotinoid insecticides such as  
427 imidacloprid. The third phase of metabolism is excretion from the cell, which is typically carried out  
428 by an ABC transmembrane protein (Schlenk et al., 2008). Several different members of the ABC  
429 transporters, which excrete organic contaminants from cells (Leslie et al., 2005) had increased  
430 abundance in fish from the Tully River (Figure 4C). Collectively, transcripts of fish from the impacted  
431 sites indicate exposure to organic contaminants, most likely to commercial pesticide formulations  
432 that include both active ingredients and additives such as solvents, surfactants, or preservatives, as  
433 there are no other known sources of organic contaminants in the area (Cox and Sorgan, 2006; Kroon  
434 et al., 2015a, b). Other xenobiotic metabolising enzymes were also induced in fish from the  
435 impacted sites. The elevations in these transcripts in the Tully River barramundi were discussed in  
436 our previous study (Hook et al., 2017).

437

438

#### 4.2 Estrogen-responsive transcripts

439 Estrogen-responsive transcripts, such as zona pellucida and vitellogenin, were amongst the most  
440 differentially abundant transcripts (Table S2). Normally, in female fish approaching spawning,  
441 circulating levels of estrogen increase, setting off a cascade of events, including stimulating the liver  
442 to start synthesising proteins required for oogenesis (reviewed in Swanson et al., 2003; Villeneuve et  
443 al., 2007). These transcripts can also become more abundant following exposure to xenoestrogens,  
444 including in juveniles and males (Jobling and Tyler, 2003). Transcripts encoding vitellogenin and the  
445 egg shell proteins were significantly elevated in the male fish from the agricultural catchments  
446 relative to male fish from the Daintree (Figure 4H). A common commercial herbicide formulation  
447 used in the area contains surfactants such as alkylphenol ethoxylates (Kroon et al., 2015b).  
448 Alkylphenol ethoxylates are weakly estrogenic, and have been shown to cause elevations in the  
449 abundances of transcripts encoding *vgt* and egg yolk proteins in both lab and field studies (Meucci  
450 and Arukwe, 2005; Li et al., 2012; Schlenk et al., 2012). This includes controlled laboratory studies  
451 on juvenile barramundi, during which similar, modest changes in transcript abundance were  
452 observed following exposure to both the “surfactant booster”, and the combination of herbicides  
453 and the “surfactant booster” (Kroon et al., 2015b). In addition to an aqueous pathway, alkylphenol  
454 ethoxylates have been shown to be persistent in sediments (Ferguson et al., 2003; Ferguson and  
455 Brownawell, 2003; Ferguson et al., 2001) so fish could be exposed during foraging or feeding during  
456 the dry season. The increased abundance of these transcripts in livers of male fish suggests  
457 exposure to a xenoestrogen such as alkylphenol ethoxylates and thus supports the third hypothesis.

458

#### 4.3 Immune responsive transcripts

459

460 Decreased abundance of some immune related transcripts were measured in all of the impacted  
461 rivers. Decreased abundances of immune related transcripts may indicate toxicant induced  
462 immunomodulation (reviewed in Segner et al., 2012). Previous studies have also noted changes in  
463 the abundance of immune related transcripts following contaminant exposure. For instance,  
464 following exposure to crude oil, decreased abundances of immune related transcripts was noted in  
465 Japanese flounder (Nakayama et al., 2008), and similar changes in the transcriptome were also  
466 measured in the head kidney of olive flounder exposed to benzo[ $\alpha$ ]pyrene (Hur et al., 2008) and in  
467 rainbow trout exposed to xenoestrogens (Hook et al., 2008). Decreased levels of immune related  
468 transcripts may also be a generalised stress response (Aluru and Vijayan, 2009). Without histological  
469 examination, it can not be determined whether these changes indicate increased incidence of  
470 disease.

471

#### 4.4 Transcripts with a metabolic function

472 Some of the other changes in the fish transcriptome at agriculturally impacted sites suggested the  
473 potential for adverse outcomes on both individuals and populations, also supporting the third  
474 hypothesis. Changes in metabolism can be indicative of increased energy expenditure via stress.  
475 Stressed animals would be expected to have increased utilisation of energy stores (lipid and protein),  
476 as well as increased levels of gluconeogenesis (Philip et al., 2012). Increases in transcript abundance  
477 of genes involved in lipid and amino acid metabolism, which is an expected stress response in fish  
478 (Aluru and Vijayan, 2009), were measured only in the Tully River (Table 5, tables S3 and S4). A  
479 previous study has noted an increase in protein metabolism in fish exposed to atrazine (McCarthy  
480 and Fuiman, 2008), which is frequently detected in the Tully River (Smith et al., 2012). Other studies

481 have noted changes in osmoregulatory capacity and as a consequence decreased feeding in fish  
482 exposed to atrazine (Nieves-Puigdoller et al., 2007). Whether the metabolic changes noted are  
483 directly attributable to exposure to stressors or a consequence of changed feeding behaviour is not  
484 known.

485 Changes in lipid metabolism and energy utilisation can also be indicative of a metabolic disorder.  
486 PPARs regulate lipid and carbohydrate metabolism (Urbatzka et al., 2015), so changes in PPARs are  
487 considered a form of metabolic endocrine disruption (Casals-Casas et al., 2008). Activation of PPAR  
488 alpha has been shown to alter insulin resistance and alter patterns of lipid storage (Pavlikova et al.,  
489 2010). Notably, these included an increase in the abundance of PPAR and acyl-coenzyme oxidase  
490 (Pavlikova et al., 2010). Changes in PPARs have been noted following exposure to a variety of  
491 anthropogenic contaminants, including organotins (Pavlikova et al., 2010), oil (Bilbao et al., 2010),  
492 and nonylphenol (Cocci et al., 2013). A large increase (greater than 200 fold, table S2, figure 4E) in  
493 the abundance of the transcript for PPAR $\alpha$  was measured in fish from the Tully River, as well as an  
494 increased abundance of transcripts for acyl-coenzyme a oxidase, fatty acid synthase, and for several  
495 lipases. All of these transcripts have been induced in a previous study following exposure to  
496 environmental contaminants and implicated in metabolic disorders such as steatosis disease  
497 (Maradonna et al., 2015). Changes in transcript abundance for insulin-like growth factor-binding  
498 protein and GADPH were also measured in fish from the Tully River. Previous studies have  
499 hypothesised these proteins have a negative effect on gametogenesis, heart rate, and energy supply  
500 for swimming (Urbatzka et al., 2015).

501 Both generalised stress and induction of the peroxisome proliferator pathway are thought to have  
502 deleterious consequences for the immune system (reviewed in Aluru and Vijayan, 2009, DeWitt et  
503 al., 2009). For example, exposure to Perfluorooctanoic acid and Perfluorooctane sulfonate, two  
504 well-known peroxisome proliferating compounds, altered transcription of immune related genes in  
505 cultured hepatocytes of the minnow (*Gobio cypris rarus*) (Wei et al., 2009). Cortisol was shown to  
506 modulate the expression of cytokines and alter the inflammatory response in trout hepatocytes  
507 (Philip et al., 2012). Previous studies have measured a decreased abundance of immune function  
508 related transcripts such as various complement components and macroglobulin in rainbow trout  
509 exposed to ethinyl estradiol (Hook et al., 2007), in flounder exposed to fuel oil (Nakayama et al.,  
510 2008), in juvenile rainbow trout exposed to both atrazine and nonylphenol (Shelley et al., 2012) and  
511 in delta smelt exposed to permethrin, a pyrethroid pesticide (Jeffries et al., 2015). We recorded a  
512 decrease in the abundance of immune related transcripts in fish from the three agriculturally  
513 impacted rivers relative to the fish from the reference rivers, with these decreases typically greatest  
514 in fish collected from the Tully River, as was noted in our previous study (Hook et al., 2017).

515 Elevations in the levels of oxidative stress related transcripts (Table 5) could be a direct contaminant  
516 response, or they could be indicative of higher levels of stress experienced in fish from the  
517 agricultural catchments. For instance, in fish from the Tully River, an increased abundance of  
518 transcripts of SOD and CAT were measured. These enzymes act in concert to detoxify superoxides  
519 with superoxide dismutase reducing radical oxygen species to hydrogen peroxide, then catalase  
520 reducing hydrogen peroxide to water and oxygen (Dalton et al., 2002). Oxidative stress responses  
521 are a well known indicator of exposure to and effects of environmental contaminants (e.g. Maria et  
522 al., 2009; Marigomez et al., 2013; Regoli et al., 2002). Previous studies have found increased  
523 abundance of these transcripts in the hepatic transcriptome of brown trout exposed to the herbicide

524 glyphosate (Uren Webster and Santos, 2015). These transcripts were only measured in fish from the  
525 Tully River that were collected during the wet season. Changes in oxidative stress related transcripts  
526 may also be indicative of stress. For instance, increased abundance of transcripts for catalase were  
527 measured in migrating salmon in the Fraser River in British Columbia (Veldhoen et al., 2010), though  
528 the authors were not certain whether these were associated with contaminant body burdens or the  
529 metabolic costs of migration. Typically, in North Queensland, pesticide, nutrient, and sediment loads  
530 in the catchments are highest during the wet season (Turner et al., 2012, 2013; Wallace et al., 2014,  
531 2015, 2016 and Garzon-Garcia et al., 2015). Hence, we suggest that Tully fish were exposed to the  
532 highest levels of stressors in the study.

533 Changes in transcript abundance could be a direct response of exposure to commercial pesticide  
534 formulations used in North Queensland (Kroon et al., 2015b), as previous studies have measured  
535 these changes in fish exposed to active ingredients such as atrazine and additives such as  
536 nonylphenol (Cocci et al., 2013). Alternatively, changes in transcript abundance could be a response  
537 to turbidity or other stressors in the environment known to correlate with elevated pesticide levels  
538 (Garzon-Garcia et al., 2015). Elevations in stress-related transcripts (though not the ones measured  
539 in this study) have been measured in delta smelt larvae exposed to high levels of turbidity  
540 (Hasenbien, 2016). Other changes that may result in stress, such as changes in habitat or loss of a  
541 prey species could also underpin the changes observed (Aluru and Vijayan, 2009). Nevertheless,  
542 changes in the abundance of stress related transcripts were only apparent in fish collected in the  
543 Tully during the wet season, and not in the two other agricultural catchments during the dry season.  
544 This suggests that any potential effect of habitat or prey alterations is overridden by effects of water  
545 quality. Regardless of the cause, prolonged exposure to stress can lead to the allocation of energy  
546 away from growth, reproduction and development, and could have negative consequences for the  
547 population (Hasenbien et al., 2016).

#### 548 *4.5 Using transcriptomic signatures in environmental management*

549 At the onset of this research, it was not certain if there would be any differences between sites or if  
550 the site related differences would be masked by inter-individual variability. The results of the  
551 previous efforts (Hook et al., 2017) and this research clearly show that despite individual differences  
552 and presumably, different population structures (e.g. Keenan, 1994), the transcriptomic profiles had  
553 greater differences between sites than between individuals. The number of individual replicates (5-  
554 8) used in this study likely contributed to being able to differentiate between sites, individual  
555 variability would have had more influence if fewer individuals were being compared.

556 The results of this study also demonstrate the potential utility in using transcriptomic profiles in site  
557 management. As we stated in the introduction, at the onset of this study water quality in the GBR  
558 catchment area was known to be degraded (reviewed in Brodie et al., 2012; Kroon et al., 2012;  
559 Smith et al., 2012), but it was not clear whether these changes were having any impact on the fish in  
560 the catchment. Because of natural variability in fish populations, declines in abundance and their  
561 causative agents can be difficult to identify (Hamilton et al., 2016). Measuring changes in fish  
562 physiology has advantages over traditional endpoints such as length at age or abundance because  
563 these endpoints are slow to respond to stressors and do not provide any information about causality  
564 (Jeffreys et al., 2015). However, since most of the pesticides in the catchment have not been well  
565 studied in fish, such that mode of action has been identified (Kroon et al., 2015; Pathiratne and

566 Kroon, 2016) there were a large number of physiological endpoints that could be monitored. The  
567 RNA Seq study helped to resolve the uncertainty by showing that fish were exposed to a  
568 pharmacologically relevant dose of pesticides (e.g. transcripts for xenobiotic metabolising enzymes  
569 were more abundant). However, demonstrating exposure is not sufficient to prove chronic impact, a  
570 link need to be made to another ecologically relevant endpoint, such as altered reproduction,  
571 disease incidence or growth (Hamilton et al., 2016). The transcriptomic data suggested physiological  
572 pathways that may be altered, including lipid, amino acid and primary metabolism, and these may  
573 indicate a reduced energy budget (Groh et al., 2015a). This study also helped to direct future  
574 monitoring efforts by identifying molecular endpoints (changes in lipid content and inflammation)  
575 that will be surveyed in future studies. Also, since our previous work (Hook et al., 2017) was a single  
576 comparison, this study provides further evidence that the changes observed can be attributed to  
577 differences in water quality, as opposed to site specific changes.

578 This study also demonstrates how RNA Seq data can be integrated into adverse outcome pathway  
579 (AOP) development to better understand the implications of contaminant exposure on fish  
580 populations. As stated previously, a goal in ecotoxicology is to translate from exposure (a molecular  
581 initiating event in AOP terminology) to population level impacts (or adverse outcomes) (reviewed in  
582 Garcia Reyero, 2014). The elevated transcripts for xenobiotic enzymes suggest exposure to  
583 pesticides. This exposure may serve as a molecular initiating event in the adverse outcome pathway  
584 (e.g. Villeneuve et al., 2014). The oxidative stress, altered metabolic pathways, and altered  
585 abundance of immune transcripts are all suggestive of “key events” (e.g. physiological changes that  
586 could alter organism health) (Villeneuve et al., 2014). If these effects are measurable at the whole  
587 organism level and sufficient in duration and severity, may indicate a reduced energy budget in  
588 these fish and reduced ecological resilience (Groh et al., 2015 et al., 2015 a,b, Hamilton et al., 2016).  
589 In future work, we will integrate other physiological indices along our RNA Seq studies to assess the  
590 potential for adverse outcomes.

591 Changes in water quality are likely only one of the factors driving differences in transcriptomic  
592 profile. Other factors include natural variability as well as differences in hydrology, diet and other  
593 natural variability (Hamilton et al., 2016). These factors may have contributed to the differences in  
594 transcriptomic profile between the two reference sites, though the significance of these changes are  
595 difficult to predict as many transcripts could not be identified.

#### 596 *4.6 Conclusions*

597 The hepatic transcriptome profiles were able to indicate: 1) in which sites there is the greatest  
598 potential for changes to fish health as indicated by alterations in transcript abundance (i.e. the Tully  
599 River) supporting the first hypothesis; 2) the transcriptomes were most different in fish collected  
600 from agriculturally impacted sites during the wet season, supporting the second hypothesis; 3) which  
601 stressors are influencing the transcriptome (i.e., exposure biomarkers such as the xenobiotic  
602 metabolising enzymes indicate exposure to pesticides, the xenoestrogens suggest exposure to  
603 alkylphenol ethoxylates) supporting the third hypothesis; and 4) what are the potential adverse  
604 outcomes associated with these stressors (i.e., decreased energetic reserves and immune capacity) if  
605 substantiated in future studies using additional endpoints, also supporting the third hypothesis.  
606 Collectively, these findings suggest that transcriptomic patterns may be a useful tool for resource  
607 managers. The transcripts with altered abundance in the different rivers correspond to known



608 stressors in the catchments (e.g. pesticides and their surfactant co-factors), and confirms the  
609 findings of our previous study (Hook et al., 2017). Furthermore, the transcripts suggest that  
610 although some exposure to these compounds is occurring year round, barramundi may be  
611 experiencing the most deleterious consequences during the wet season, as suggested by changes in  
612 lipid metabolism and immune response. We hypothesise that since the altered transcript abundance  
613 were most prevalent in fish collected from the Tully River during the wet season, pesticide runoff  
614 from agriculture, as opposed to alterations in barramundi habitat, is the primary stressor. Our study  
615 demonstrated that the hepatic transcriptome, as determined via RNA-Seq, could be an effective  
616 means of classifying the relative degree of degradation of a site, and should be considered as a  
617 management tool. Overall, this study not only provides information on the health of barramundi in  
618 selected Great Barrier Reef catchments, it also demonstrates the utility of using the transcriptome to  
619 monitor organism health and act as an early warning of potential deleterious biological impacts.

#### 620 **Acknowledgements:**

621 We would like to thank Dean Jones, Adam McKeown and David Westcott for fish collections, and  
622 appreciate the assistance provided by local landholders and fishermen. Belinda Thomson (DSITI)  
623 created the map used in Figure 1. Collections were conducted with permission from the Queensland  
624 Government and the CSIRO Ecosystem Sciences' Animal Ethics Committee. Support for this project  
625 was provided by the CSIRO Water for a Healthy Country flagship and the CSIRO Oceans and  
626 Atmosphere business unit. Computational support was provided by the CSIRO bioinformatics core.  
627 Two anonymous reviewers greatly improved the quality of this paper. The funding source had no  
628 role in study design, collection analysis or interpretation of data, preparing the publication or in the  
629 decision to publish.

#### 630 **References:**

- 631 Aluru, N., Vijayan, M.M., 2009. Stress transcriptomics in fish: A role for genomic cortisol signaling.  
632 *General and Comparative Endocrinology* 164, 142-150.
- 633
- 634 An, K.G., Park, S.S., Shin, J.Y., 2002. An evaluation of a river health using the index of biological  
635 integrity along with relations to chemical and habitat conditions. *Environment International* 28, 411-  
636 420.
- 637
- 638 Ankley, G.T., Bennett, R.S., Erickson, R.J., Hoff, D.J., Hornung, M.W., Johnson, R.D., Mount, D.R.,  
639 Nichols, J.W., Russom, C.L., Schmieder, P.K., Serrano, J.A., Tietge, J.E., Villeneuve, D.L., 2010.  
640 *Adverse Outcome Pathways: A Conceptual Framework to Support Ecotoxicology Research and Risk*  
641 *Assessment. Environmental Toxicology and Chemistry* 29, 730-741.
- 642
- 643 Bahamonde, P.A., Feswick, A., Isaacs, M.A., Munkittrick, K.R., Martyniuk, C.J., 2016. Defining the  
644 Role of Omics in Assessing Ecosystem Health: Perspectives from the Canadian Environmental  
645 Monitoring Program: *Environmental Toxicology and Chemistry* 35, 20-35.
- 646
- 647 Baird, D.J., Hajibabaei, M., 2012. Biomonitoring 2.0: a new paradigm in ecosystem assessment made  
648 possible by next-generation DNA sequencing. *Molecular Ecology* 21, 2039-2044.
- 649
- 650 Bilbao, E., Raingeard, D., de Cerio, O.D., Ortiz-Zarragoitia, M., Ruiz, P., Izagirre, U., Orbea, A.,  
651 Marigomez, I., Cajaraville, M.P., Cancio, I., 2010. Effects of exposure to Prestige-like heavy fuel oil

652 and to perfluorooctane sulfonate on conventional biomarkers and target gene transcription in the  
653 thicklip grey mullet *Chelon labrosus*. *Aquatic Toxicology* 98, 282-296.

654

655 Bilkovic, D.M., Roggero, M., Hershner, C.H., Havens, K.H., 2006. Influence of land use on  
656 macrobenthic communities in nearshore estuarine habitats. *Estuaries and Coasts* 29, 1185-1195.

657 Blankenberg, D., Gordon, A., Von Kuster, G., Coraor, N., Taylor, J., Nekrutenko, A., Galaxy, T., 2010.  
658 Manipulation of FASTQ data with Galaxy. *Bioinformatics* 26, 1783-1785.

659

660 Blankenberg, D., Gordon, A., Von Kuster, G., Coraor, N., Taylor, J., Nekrutenko, A., Galaxy, T., 2010.  
661 Manipulation of FASTQ data with Galaxy. *Bioinformatics* 26, 1783-1785.

662

663 Blazer, V.S., Iwanowicz, D.D., Walsh, H.L., Sperry, A.J., Iwanowicz, L.R., Alvarez, D.A., Brightbill, R.A.,  
664 Smith, G., Foreman, W.T., Manning, R., 2014. Reproductive health indicators of fishes from  
665 Pennsylvania watersheds: association with chemicals of emerging concern. *Environmental*  
666 *Monitoring and Assessment* 186, 6471-6491.

667

668 Bolger, A.M., Lohse, M., Usadel, B., 2014. Trimmomatic: a flexible trimmer for Illumina sequence  
669 data. *Bioinformatics* 30, 2114-2120.

670

671 Brodie, J.E., Kroon, F.J., Schaffelke, B., Wolanski, E.C., Lewis, S.E., Devlin, M.J., Bohnet, I.C.,  
672 Bainbridge, Z.T., Waterhouse, J., Davis, A.M., 2012. Terrestrial pollutant runoff to the Great Barrier  
673 Reef: An update of issues, priorities and management responses. *Marine Pollution Bulletin* 65, 81-  
674 100.

675

676 Casals-Casas, C., Feige, J.N., Desvergne, B., 2008. Interference of pollutants with PPARs: endocrine  
677 disruption meets metabolism. *International Journal of Obesity* 32, S53-S61.

678

679 Chariton, A.A., Court, L.N., Hartley, D.M., Colloff, M.J., Hardy, C.M., 2010. Ecological assessment of  
680 estuarine sediments by pyrosequencing eukaryotic ribosomal DNA. *Frontiers in Ecology and the*  
681 *Environment* 8, 233-238.

682

683 Chariton, A.A., Stephenson, S., Morgan, M.J., Steven, A.D.L., Colloff, M.J., Court, L.N., Hardy, C.M.,  
684 2015. Metabarcoding of benthic eukaryote communities predicts the ecological condition of  
685 estuaries. *Environmental Pollution* 203, 165-174.

686

687 Cocci, P., Mosconi, G., Palermo, F.A., 2013. Effects of 4-nonylphenol on hepatic gene expression of  
688 peroxisome proliferator-activated receptors and cytochrome P450 isoforms (CYP1A1 and CYP3A4) in  
689 juvenile sole (*Solea solea*). *Chemosphere* 93, 1176-1181.

690

691 Conesa, A., Gotz, S., Garcia-Gomez, J.M., Terol, J., Talon, M., Robles, M., 2005. Blast2GO: a universal  
692 tool for annotation, visualization and analysis in functional genomics research. *Bioinformatics* 21,  
693 3674-3676.

694

695 Connon, R.E., D'Abronzio, L.S., Hostetter, N.J., Javidmehr, A., Roby, D.D., Evans, A.F., Loge, F.J.,  
696 Werner, I., 2012. Transcription Profiling in Environmental Diagnostics: Health Assessments in  
697 Columbia River Basin Steelhead (*Oncorhynchus mykiss*). *Environmental Science & Technology* 46,  
698 6081-6087.

699

700 Cox, C. Surgan M. 2006. Unidentified inert ingredients in pesticides: Implications for human and  
701 environmental health. *Environmental Health Perspectives* 12: 1803-1806.

702

703 Dafforn, K.A., Baird, D.J., Chariton, A.A., Sun, M.Y., Brown, M.V., Simpson, S.L., Kelaher, B.P.,  
704 Johnston, E.L., 2014. Faster, Higher and Stronger? The Pros and Cons of Molecular Faunal Data for  
705 Assessing Ecosystem Condition, in: Woodward, G., Dumbrell, A.J., Baird, D.J., Hajibabaei, M. (Eds.),  
706 Advances in Ecological Research, Vol 51: Big Data in Ecology, pp. 1-40.  
707  
708 Dafforn, K.A., Simpson, S.L., Kelaher, B.P., Clark, G.F., Komyakova, V., Wong, C.K.C., Johnston, E.L.,  
709 2012. The challenge of choosing environmental indicators of anthropogenic impacts in estuaries.  
710 Environmental Pollution 163, 207-217.  
711  
712 Dalton, T.P., Puga, A., Shertzer, H.G., 2002. Induction of cellular oxidative stress by aryl hydrocarbon  
713 receptor activation. Chemico-Biological Interactions 141, 77-95.  
714  
715 Davis, A.M., Lewis, S.E., Bainbridge, Z.T., Glendenning, L., Turner, R.D.R., Brodie, J.E., 2012. Dynamics  
716 of herbicide transport and partitioning under event flow conditions in the lower Burdekin region,  
717 Australia. Marine Pollution Bulletin 65, 182-193.  
718  
719 DeWitt, J.C., Shnyra, A, Badr, M, Loveless, SE, Hoban, D, Frame, S, Cunard, R, Anderson S, Meade, BJ,  
720 et al. 2009. Immunotoxicity of Perfluorooctanoic Acid and Perfluorooctane Sulfonate and the Role  
721 of Peroxisome Proliferator-Activated Receptor Alpha. Critical reviews in Toxicology 39:76-94.  
722  
723 Egaas, E., Skaare, J.U., Svendsen, N.O., Sandvik, M., Falls, J.G., Dauterman, W.C., Collier, T.K.,  
724 Netland, J., 1993. A comparative study of effects of atrazine on xenobiotic metabolising enzymes in fish  
725 and insect, and of the in vitro phase II atrazine metabolism in some fish, insects mammals and one  
726 plant species Comparative Biochemistry and Physiology C-Pharmacology Toxicology & Endocrinology  
727 106, 141-149.  
728  
729 Falciani, F., Diab, A.M., Sabine, V., Williams, T.D., Ortega, F., George, S.G., Chipman, J.K., 2008.  
730 Hepatic transcriptomic profiles of European flounder (*Platichthys flesus*) from field sites and  
731 computational approaches to predict site from stress gene responses following exposure to model  
732 toxicants. Aquatic Toxicology 90, 92-101.  
733  
734 Ferguson, P.L., Bopp, R.F., Chillrud, S.N., Aller, R.C., Brownawell, B.J., 2003. Biogeochemistry of  
735 nonylphenol ethoxylates in urban estuarine sediments. Environmental Science & Technology 37,  
736 3499-3506.  
737  
738 Ferguson, P.L., Brownawell, B.J., 2003. Degradation of nonylphenol ethoxylates in estuarine  
739 sediment under aerobic and anaerobic conditions. Environmental Toxicology and Chemistry 22,  
740 1189-1199.  
741 Ferguson, P.L., Iden, C.R., Brownawell, B.J., 2001. Distribution and fate of neutral alkylphenol  
742 ethoxylate metabolites in a sewage-impacted urban estuary. Environmental Science & Technology  
743 35, 2428-2435.  
744  
745 Froese R. 2006. Cube law, condition factor and weight-length relationships: history, meta-analysis  
746 and recommendations. Journal of Applied Ichthyology. 2006;22:241-253. doi: 10.1111/j.1439-  
747 0426.2006.00805.x  
748  
749 Garcia-Reyero, N. 2015. Are adverse outcome pathways here to stay? Environmental Science and  
750 Technology 49: 3-9.  
751  
752 Garzon-Garcia A, Wallace R, Huggins R, Turner RDR, Smith RA, Orr D, Ferguson B, Gardiner R,  
753 Thomson B and Warne MStJ. 2015. Total suspended solids, nutrients and pesticide loads (2013-

754 2014) for rivers that discharge to the Great Barrier Reef – Great Barrier Reef Catchment Loads  
755 Monitoring Program 2013–2014. Department of Science, Information Technology, Innovation and  
756 the Arts, Brisbane, Queensland, 108pp. Available from: [http://www.reefplan.qld.gov.au/measuring-](http://www.reefplan.qld.gov.au/measuring-success/paddock-to-reef/assets/2013-2014-gbr-catchment-loads-technical-report.pdf)  
757 [success/paddock-to-reef/assets/2013-2014-gbr-catchment-loads-technical-report.pdf](http://www.reefplan.qld.gov.au/measuring-success/paddock-to-reef/assets/2013-2014-gbr-catchment-loads-technical-report.pdf) .  
758

759 Gibson, J.F., Shokralla, S., Curry, C., Baird, D.J., Monk, W.A., King, I., Hajibabaei, M., 2015. Large-Scale  
760 Biomonitoring of Remote and Threatened Ecosystems via High-Throughput Sequencing. *PLoS one* 10.  
761

762 Goecks, J., Nekrutenko, A., Taylor, J., Galaxy, T., 2010. Galaxy: a comprehensive approach for  
763 supporting accessible, reproducible, and transparent computational research in the life sciences.  
764 *Genome Biology* 11.  
765

766 Grabherr, M.G., Haas, B.J., Yassour, M., Levin, J.Z., Thompson, D.A., Amit, I., Adiconis, X., Fan, L.,  
767 Raychowdhury, R., Zeng, Q., Chen, Z., Mauceli, E., Hacohen, N., Gnirke, A., Rhind, N., di Palma, F.,  
768 Birren, B.W., Nusbaum, C., Lindblad-Toh, K., Friedman, N., Regev, A., 2011. Full-length transcriptome  
769 assembly from RNA-Seq data without a reference genome. *Nature Biotechnology* 29, 644-U130.  
770

771 Groh, K.J., Carvalho, R.N., Chipman, J.K., Denslow, N.D., Halder, M., Murphy, C.A., Roelofs, D., Rolaki,  
772 A., Schirmer, K., Watanabe, K.H., 2015a. Development and application of the adverse outcome  
773 pathway framework for understanding and predicting chronic toxicity: I. Challenges and research  
774 needs in ecotoxicology. *Chemosphere* 120, 764-777.  
775

776 Groh, K.J., Carvalho, R.N., Chipman, J.K., Denslow, N.D., Halder, M., Murphy, C.A., Roelofs, D., Rolaki,  
777 A., Schirmer, K., Watanabe, K.H., 2015b. Development and application of the adverse outcome  
778 pathway framework for understanding and predicting chronic toxicity: II. A focus on growth  
779 impairment in fish. *Chemosphere* 120, 778-792.  
780

781 Haas, B.J., Papanicolaou, A., Yassour, M., Grabherr, M., Blood, P.D., Bowden, J., Couger, M.B., Eccles,  
782 D., Li, B., Lieber, M., MacManes, M.D., Ott, M., Orvis, J., Pochet, N., Strozzi, F., Weeks, N.,  
783 Westerman, R., William, T., Dewey, C.N., Henschel, R., Leduc, R.D., Friedman, N., Regev, A., 2013. De  
784 novo transcript sequence reconstruction from RNA-seq using the Trinity platform for reference  
785 generation and analysis. *Nature Protocols* 8, 1494-1512.  
786

787 Haasch, M., Henderson, M., Buhler, D., 1998. Induction of CYP2M1 and CYP2K1 lauric acid  
788 hydroxylase activities by peroxisome proliferating agents in certain fish species: Possible  
789 implications. *Marine Environmental Research* 46, 37-40.  
790

791 Hamilton, P.B., Cowx, I.G., Oleksiak, M.F., Griffiths, A.M., Grahn, M., Stevens, J.R., Carvahlo, G.R.,  
792 Nicol, E., Tyler, C.R. 2016. Population-level consequences for a wild fish exposed to sublethal  
793 concentrations of chemicals – a critical review. *Fish and Fisheries* 17: 545-566.  
794

795 Hasenbien S, Lawler SP, Geist J, Connon RE 2016 A long-term assessment of pesticide mixture effects  
796 on aquatic invertebrate communities. *Environmental Toxicology and Chemistry* 35: 218-232.  
797

798 Hateley LR, Ellis R, Shaw M, Waters D, Carroll C. 2014. Modelling reductions of pollutant loads due to  
799 improved management practices in the Great Barrier Reef catchments – Wet Tropics NRM region,  
800 Cairns, Queensland.  
801

802 Hook, S.E., Skillman, A.D., Small, J.A., Schultz, I.R., 2007. Temporal changes in gene expression in  
803 rainbow trout exposed to ethynyl estradiol. *Comparative Biochemistry and Physiology C-Toxicology*  
804 *& Pharmacology* 145, 73-85.

805  
806 Hook, S.E., 2010. Promise and progress in environmental genomics: a status report on the  
807 applications of gene expression-based microarray studies in ecologically relevant fish species.  
808 Journal of Fish Biology 77, 1999-2022.  
809  
810 Hook, S.E., Gallagher, E.P., Batley, G.E., 2014. The role of biomarkers in the assessment of aquatic  
811 ecosystem health. Integrated Environmental Assessment Management 10, 327-341.  
812  
813 Hook, S.E., Nagler, J.J., Cavileer, T., Verducci, J., Liu, Y., Hayton, W., Schultz, I.R., 2011. Relationships  
814 between the transcriptome and physiological indicators of reproduction in female rainbow trout  
815 over an annual cycle. Environmental Toxicology and Chemistry 30, 309-318.  
816  
817 Hook, S.E., Skillman, A.D., Small, J.A., Schultz, I.R., 2007. Temporal changes in gene expression in  
818 rainbow trout exposed to ethynyl estradiol. Comparative Biochemistry and Physiology C-Toxicology  
819 & Pharmacology 145, 73-85.  
820  
821 Hook, S.E., Kroon, F.J., Metcalfe, S., Moncuquet, P., McGrath, A., Greenfield, P., Smith, R., Warne, M.  
822 St. J. Turner, R.D., McKeown, A., Westcott, D.A. in press. Global transcriptomic profiling in  
823 barramundi *Lates calcarifer* from rivers impacted by differing agricultural land-uses. Environmental  
824 Toxicology and Chemistry 10.1002/etc.3505  
825  
826 Hook, S.E., Twine, N.A., Simpson, S.L., Spadaro, D.A., Moncuquet, P., Wilkins, M.R., 2014b. 454  
827 pyrosequencing-based analysis of gene expression profiles in the amphipod *Melita plumulosa*:  
828 Transcriptome assembly and toxicant induced changes. Aquatic toxicology 153, 73-88.  
829  
830 Huang, D.W., Sherman, B.T., Lempicki, R.A., 2009. Systematic and integrative analysis of large gene  
831 lists using DAVID bioinformatics resources. Nature Protocols 4, 44-57.  
832  
833 Hughes, R.M., Kaufmann, P.R., Herlihy, A.T., Kincaid, T.M., Reynolds, L., Larsen, D.P., 1998. A process  
834 for developing and evaluating indices of fish assemblage integrity. Canadian Journal of Fisheries and  
835 Aquatic Sciences 55, 1618-1631.  
836  
837 Hukkanen, J., Jacob, P., Benowitz, N.L., 2005. Metabolism and disposition kinetics of nicotine.  
838 Pharmacological Reviews 57, 79-115.  
839  
840 Hur, D., Jeon, J-K., Hong, S. 2013. Analysis of immune gene expression modulated by  
841 benzo[a]pyrene in head kidney of olive flounder (*Paralichthys olivaceus*). Comparative Biochemistry  
842 and Physiology B 165: 49-57.  
843  
844 Jeffrey J.D., Hasler C.D., Chapman J.M., Cooke S.J., Suski C.D. 2015. Linking Landscape-Scale  
845 Disturbances to Stress and Condition of Fish: Implications for Restoration and Conservation. Integr  
846 Comp Biol. 55: 618-630.  
847  
848 Jeffries, K.M., Komoroske, L.M., Truong, J., Werner, I., Hasenbein, M., Hasenbein, S., Fanguie, N.A.,  
849 Cannon, R.E., 2015. The transcriptome-wide effects of exposure to a pyrethroid pesticide on the  
850 Critically Endangered delta smelt *Hypomesus transpacificus*. Endangered Species Research 28, 43-60.  
851  
852 Jeffries, M.K.S., Mehinto, A.C., Carter, B.J., Denslow, N.D., Kolok, A.S., 2012. Taking Microarrays to  
853 the Field: Differential Hepatic Gene Expression of Caged Fathead Minnows from Nebraska  
854 Watersheds. Environmental Science & Technology 46, 1877-1885.  
855

856 Jobling, S., Tyler, C.R., 2003. Endocrine disruption in wild freshwater fish. *Pure and Applied*  
857 *Chemistry* 75, 2219-2234.  
858

859 Kailola, P.J., Williams, M.J., Stewart, P.C., Reichelt, R.E., McNee, A., and Grieve, C. (1993) 'Fisheries  
860 Resources.' (Bureau of Resource Sciences, Department of Primary Industries and Energy, and the  
861 Fisheries Research and Development Corporation: Canberra) 422 pp

862 Keenan, C.P. 1994. Recent evolution of population structure in Australian barramundi, *Lates*  
863 *calcarifer* (Bloch): an example of isolation by distance in one dimension. *Australian Journal of*  
864 *Marine and Freshwater Research*. 45:1123-1148.  
865

866 Kroon, F.J., Hook, S.E., Jones, D., Metcalfe, S., Osborn, H.L., 2014. Effects of Atrazine on  
867 Endocrinology and Physiology in Juvenile Barramundi *Lates calcarifer* (Bloch). *Environmental*  
868 *Toxicology and Chemistry* 33, 1607-1614.  
869

870 Kroon, F.J., Hook, S.E., Jones, D., Metcalfe, S., Henderson, B., Smith, R., Warne, M.S., Turner, R.D.,  
871 McKeown, A., Westcott, D.A., 2015a. Altered transcription levels of endocrine associated genes in  
872 two fisheries species collected from the Great Barrier Reef catchment and lagoon. *Marine*  
873 *Environmental Research* 104, 51-61.  
874

875 Kroon, F.J., Hook, S.E., Metcalfe, S., Jones, D., 2015b. Altered levels of endocrine biomarkers in  
876 juvenile barramundi (*Lates calcarifer*; Bloch) following exposure to commercial herbicide and  
877 surfactant formulations. *Environmental Toxicology and Chemistry* 34:1881-1890.  
878

879 Kroon, F.J.. 2015. The efficacy of clove oil for anaesthesia of eight species of Australian tropical  
880 freshwater teleosts. *Limnology & Oceanography: Methods* 13, 463-475. DOI: 10.1002/lom3.10040

881 Kroon, F.J., Kuhnert, P.M., Henderson, B.L., Wilkinson, S.N., Kinsey-Henderson, A., Abbott, B.,  
882 Brodie, J.E., Turner, R.D.R., 2012. River loads of suspended solids, nitrogen, phosphoturs and  
883 herbicides delivered to the Great Barrier Reef lagoon. *Marine Pollution Bulletin* 65, 167-181.  
884

885 Langmead, B., Trapnell, C., Pop, M., Salzberg, S.L., 2009. Ultrafast and memory-efficient alignment of  
886 short DNA sequences to the human genome. *Genome Biology* 10.  
887

888 Lemaire, G., de Sousa, G., Rahmani, R. 2004. A PXR reporter gene assay in a stable cell culture  
889 system: CYP3A4 and CYP2B6 induction by pesticides. *Biochemical Pharmacology* 68, 2347-2358.

890 Leslie, E.M., Deeley, R.G., Cole, S.P.C., 2005. Multidrug resistance proteins: role of P-glycoprotein,  
891 MRP1, MRP2, and BCRP (ABCG2) in tissue defense. *Toxicology and Applied Pharmacology* 204, 216-  
892 237.  
893

894 Lewis, S.E., Brodie, J.E., Bainbridge, Z.T., Rohde, K.W., Davis, A.M., Masters, B.L., Maughan, M.,  
895 Devlin, M.J., Mueller, J.F., Schaffelke, B., 2009. Herbicides: A new threat to the Great Barrier Reef.  
896 *Environmental Pollution* 157, 2470-2484.  
897

898 Lewis, S.E., Schaffelke, B., Shaw, M., Bainbridge, Z.T., Rohde, K.W., Kennedy, K., Davis, A.M., Masters,  
899 B.L., Devlin, M.J., Mueller, J.F., Brodie, J.E., 2012. Assessing the additive risks of PSII herbicide  
900 exposure to the Great Barrier Reef. *Marine Pollution Bulletin* 65, 280-291.  
901

902 Li, B., Dewey, C.N., 2011. RSEM: accurate transcript quantification from RNA-Seq data with or  
903 without a reference genome. *BMC Bioinformatics* 12, 16.  
904

905 Li, Z., Zhang, H., Gibson, M., Liu, P., 2012. An evaluation of the combined effects of phenolic  
906 endocrine disruptors on vitellogenin induction in goldfish *Carassius auratus*. *Ecotoxicology* 21, 1919-  
907 1927.

908

909 Livingstone, D.R., 1991. Organic xenobiotic metabolism in marine invertebrates. *Advances in*  
910 *Comparative and Environmental Physiology* 7, 45-185.

911

912 Luo, Y., Guo, W., Ngo, H.H., Nghiem, L.D., Hai, F.I., Zhang, J., Liang, S., Wang, X.C. 2014. A review on  
913 the occurrence of micropollutants in the aquatic environment and their fate and removal during  
914 wastewater treatment. *Science of the Total Environment*.

915

916 Maradonna, F., Nozzi, V., Santangeli, S., Traversi, I., Gallo, P., Fattore, E., Mita, D.G., Mandich, A.,  
917 Carnevali, O., 2015. Xenobiotic-contaminated diets affect hepatic lipid metabolism: Implications for  
918 liver steatosis in *Sparus aurata* juveniles. *Aquatic Toxicology* 167, 257-264.

919

920 Maria, V.L., Santos, M.A., Bebianno, M.J., 2009. Biomarkers of damage and protection in *Mytilus*  
921 *galloprovincialis* cross transplanted in Ria Formosa Lagoon (Portugal). *Ecotoxicology* 18, 1018-1028.

922

923 Marigomez, I., Zorita, I., Izagirre, U., Ortiz-Zarragoitia, M., Navarro, P., Etxebarria, N., Orbea, A., Soto,  
924 M., Cajaraville, M.P., 2013. Combined use of native and caged mussels to assess biological effects of  
925 pollution through the integrative biomarker approach. *Aquatic Toxicology* 136, 32-48.

926

927 McCarthy, I.D., Fuiman, L.A., 2008. Growth and protein metabolism in red drum (*Sciaenops*  
928 *ocellatus*) larvae exposed to environmental levels of atrazine and malathion. *Aquatic Toxicology* 88,  
929 220-229.

930

931 Mebane, C.A., Maret, T.R., Hughes, R.M., 2003. An index of biological integrity (IBI) for Pacific  
932 Northwest rivers. *Transactions of the American Fisheries Society* 132, 239-261.

933

934 Mehinto, A.C., Martyniuk, C.J., Spade, D.J., Denslow, N.D., 2012. Applications of next-generation  
935 sequencing in fish ecotoxicogenomics. *Frontiers in Genetics* 3, 62-Article No.: 62.

936

937 Meucci, V., Arukwe, A., 2005. Detection of vitellogenin and zona radiata protein expressions in  
938 surface mucus of immature juvenile Atlantic salmon (*Salmo salar*) exposed to waterborne  
939 nonylphenol. *Aquatic Toxicology* 73, 1-10.

940

941 Nakayama, K., Kitamura, S.-I., Murakami, Y., Song, J.-Y., Jung, S.-J., Oh, M.-J., Iwata, H., Tanabe, S.,  
942 2008. Toxicogenomic analysis of immune system-related genes in Japanese flounder (*Paralichthys*  
943 *olivaceus*) exposed to heavy oil. *Marine Pollution Bulletin* 57, 445-452.

944

945 Nieves-Puigdoller, K., Bjornsson, B.T., McCormick, S.D., 2007. Effects of hexazinone and atrazine on  
946 the physiology and endocrinology of smolt development in Atlantic salmon. *Aquatic Toxicology* 84,  
947 27-37.

948

949 Pathiratne, A., Kroon, F.J., 2016. Using species sensitivity distribution approach to assess the risks of  
950 commonly detected agricultural pesticides to Australia's tropical freshwater ecosystems.  
951 *Environmental Toxicology and Chemistry* 35, 419-428.

952

953 Pavlikova, N., Kortner, T.M., Arukwe, A., 2010. Peroxisome proliferator-activated receptors,  
954 estrogenic responses and biotransformation system in the liver of salmon exposed to tributyltin and  
955 second messenger activator. *Aquatic Toxicology* 99, 176-185.

956  
957 Philip, A.M., Kim, S.D., Vijayan, M.M., 2012. Cortisol modulates the expression of cytokines and  
958 suppressors of cytokine signaling (SOCS) in rainbow trout hepatocytes. *Developmental and*  
959 *Comparative Immunology* 38, 360-367.  
960  
961 Regoli, F., Gorbi, S., Frenzilli, G., Nigro, M., Corsi, I., Focardi, S., Winston, G.W., 2002. Oxidative stress  
962 in ecotoxicology: from the analysis of individual antioxidants to a more integrated approach. *Marine*  
963 *Environmental Research* 54, 419-423.  
964  
965 Roy, L.A., Armstrong, J.L., Sakamoto, K., Steinert, S., Perkins, E., Lomax, D.P., Johnson, L.L., Schlenk,  
966 D., 2003. The relationships of biochemical endpoints to histopathology and population metrics in  
967 feral flatfish species collected near the municipal wastewater outfall of Orange County, California,  
968 USA. *Environmental Toxicology and Chemistry* 22, 1309-1317.  
969  
970 Schlenk, D., Celander, M., Gallagher, E.P., George, S., James, M., Kullman, S.W., van den Hurk, P.,  
971 Willett, K., 2008. Biotransformation in fishes. In: *The Toxicology of Fishes* (R. Di  
972 Giulio and D. Hinton editors). Taylor and Francis Publishers, Washington DC pp 153-  
973 234.  
974  
975 Schlenk, D., Lavado, R., Loyo-Rosales, J.E., Jones, W., Maryoung, L., Riar, N., Werner, I., Sedlak, D.,  
976 2012. Reconstitution Studies of Pesticides and Surfactants Exploring the Cause of Estrogenic Activity  
977 Observed in Surface Waters of the San Francisco Bay Delta. *Environmental Science & Technology* 46,  
978 9106-9111.  
979  
980 Segner, H., Wenger, M., Moeller, A.M., Koellner, B., Casanova-Nakayama, A., 2012. Immunotoxic  
981 effects of environmental toxicants in fish - how to assess them? *Environmental Science and Pollution*  
982 *Research* 19, 2465-2476.  
983  
984 Shelley, L.K., Ross, P.S., Miller, K.M., Kaukinen, K.H., Kennedy, C.J., 2012. Toxicity of atrazine and  
985 nonylphenol in juvenile rainbow trout (*Oncorhynchus mykiss*): Effects on general health, disease  
986 susceptibility and gene expression. *Aquatic Toxicology* 124, 217-226.  
987  
988 Smith, R., Middlebrook, R., Turner, R., Huggins, R., Vardy, S., Warne, M.St.J., 2012. Large-scale  
989 pesticide monitoring across Great Barrier Reef catchments - Paddock to Reef Integrated Monitoring,  
990 Modelling and Reporting Program. *Marine Pollution Bulletin* 65, 117-127.  
991  
992 Sumpter, J.P., Jobling, S., 1995. Vitellogenesis as a biomarker for estrogenic contamination of the  
993 aquatic environment. *Environmental Health Perspectives* 103, 173-178.  
994  
995 Swanson, P., Dickey, J.T., Campbell, B., 2003. Biochemistry and physiology of fish gonadotropins. *Fish*  
996 *Physiology and Biochemistry* 28, 53-59.  
997  
998 Tarazona, S., Garcia-Alcalde, F., Dopazo, J., Ferrer, A., Conesa, A., 2011. Differential expression in  
999 RNA-seq: A matter of depth. *Genome Research* 21, 2213-2223.  
1000  
1001 Turner RDR, Huggins R, Wallace R, Smith RA, Vardy S and **Warne MStJ**. 2013. Total suspended solids,  
1002 nutrient and pesticide loads for rivers that discharge to the Great Barrier Reef: Great Barrier Reef  
1003 Loads Monitoring 2010–2011. Water Sciences Technical Report, Volume 2013, Number 1.  
1004 Department of Science, Information Technology, Innovation and the Arts, Brisbane, Queensland,  
1005 Australia. 53p. ISSN 1834-3910. ISBN 978-1-7423-0996. Available from:



1006 [http://www.reefplan.qld.gov.au/measuring-success/paddock-to-reef/assets/2010-2011-gbr-](http://www.reefplan.qld.gov.au/measuring-success/paddock-to-reef/assets/2010-2011-gbr-catchment-loads-report.pdf)  
1007 [catchment-loads-report.pdf](http://www.reefplan.qld.gov.au/measuring-success/paddock-to-reef/assets/2010-2011-gbr-catchment-loads-report.pdf)  
1008

1009 Turner R, Huggins R, Wallace R, Smith R, Vardy S and **Warne MStJ**. 2012. Sediment, nutrient and  
1010 pesticide loads: Great Barrier Reef Loads Monitoring 2009–2010. Water Sciences Technical Report,  
1011 Volume 2012, Number 14. Department of Science, Information Technology, Innovation and the Arts,  
1012 Brisbane, Queensland, Australia. 53p. ISSN 1834-3910. ISBN 978-1-7423-0994. Available from:  
1013 [http://www.reefplan.qld.gov.au/measuring-success/paddock-to-reef/assets/2009-2010-gbr-](http://www.reefplan.qld.gov.au/measuring-success/paddock-to-reef/assets/2009-2010-gbr-catchment-loads-report.pdf)  
1014 [catchment-loads-report.pdf](http://www.reefplan.qld.gov.au/measuring-success/paddock-to-reef/assets/2009-2010-gbr-catchment-loads-report.pdf)  
1015

1016 Urbatzka, R., Galante-Oliveira, S., Rocha, E., Lobo-da-Cunha, A., Castro, L.F.C., Cunha, I., 2015. Effects  
1017 of the PPAR alpha agonist WY-14,643 on plasma lipids, enzymatic activities and mRNA expression of  
1018 lipid metabolism genes in a marine flatfish, *Scophthalmus maximus*. *Aquatic Toxicology* 164, 155-  
1019 162.

1020

1021 Uren Webster TM, Santos, EM 2015 Global transcriptomic profiling demonstrates induction of  
1022 oxidative stress and of compensatory cellular stress responses in brown trout exposed to glyphosate  
1023 and Roundup. *BMC Genomics* 16: 32.  
1024

1025 Veldhoen, N., Ikonomou, M.G., Dubetz, C., MacPherson, N., Sampson, T., Kelly, B.C., Helbing, C.C.,  
1026 2010. Gene expression profiling and environmental contaminant assessment of migrating Pacific  
1027 salmon in the Fraser River watershed of British Columbia. *Aquatic Toxicology* 97, 212-225.  
1028

1029 Villeneuve, D.L., Larkin, P., Knoebl, I., Miracle, A.L., Kahl, M.D., Jensen, K.M., Makynen, E.A., Durhan,  
1030 E.J., Carter, B.J., Denslow, N.D., Ankley, G.T., 2007. A graphical systems model to facilitate  
1031 hypothesis-driven ecotoxicogenomics research on the teleost brain-pituitary-gonadal axis.  
1032 *Environmental Science & Technology* 41, 321-330.  
1033

1034 Villeneuve, D.L., Crump, D., Garcia-Reyero, N., Hecker, M., Hutchinson, T.H., LaLone, C.A.,  
1035 Landesmann, B., Lettieri, T., Munn, S., Nepelska, M., Ottinger, M.A., Vergauwen, L., Whelan, M.,  
1036 2014. Adverse Outcome Pathway (AOP) Development I: Strategies and Principles. *Toxicological*  
1037 *Sciences* 142, 312-320.

1038

1039 Wallace R, Huggins R, King O, Gardiner R, Thomson B, Orr DN, Ferguson B, Taylor C, Severino Z,  
1040 Smith RA, Warne MStJ, Turner RDR, and Mann RM. 2016. Total suspended solids, nutrients and  
1041 pesticide loads (2013–2014) for rivers that discharge to the Great Barrier Reef – Great Barrier Reef  
1042 Catchment Loads Monitoring Program 2014–2015. Department of Science, Information Technology,  
1043 Innovation and the Arts, Brisbane, Queensland, 111pp. DOI: 10.131140/RG.2.2.17851.62240.  
1044 Available from: [http://www.reefplan.qld.gov.au/measuring-success/paddock-to-reef/assets/2014-](http://www.reefplan.qld.gov.au/measuring-success/paddock-to-reef/assets/2014-2015-gbr-catchment-loads-summary.pdf)  
1045 [2015-gbr-catchment-loads-summary.pdf](http://www.reefplan.qld.gov.au/measuring-success/paddock-to-reef/assets/2014-2015-gbr-catchment-loads-summary.pdf)

1046 Wallace R, Huggins R, Smith RA, Turner R, Garzon-Garcia A and **Warne MStJ**. 2015. Total suspended  
1047 solids, nutrients and pesticide loads (2012–2013) for rivers that discharge to the Great Barrier Reef –  
1048 Great Barrier Reef Catchment Loads Monitoring Program 2012–2013. Department of Science,  
1049 Information Technology, Innovation and the Arts, Brisbane, Queensland, 99pp. Available from:  
1050 [http://www.reefplan.qld.gov.au/measuring-success/paddock-to-reef/assets/2012-2013-gbr-](http://www.reefplan.qld.gov.au/measuring-success/paddock-to-reef/assets/2012-2013-gbr-catchment-loads-report.pdf)  
1051 [catchment-loads-report.pdf](http://www.reefplan.qld.gov.au/measuring-success/paddock-to-reef/assets/2012-2013-gbr-catchment-loads-report.pdf)

1052 Wallace R, Huggins R, Smith RA, Turner RDR, Vardy S and **Warne MStJ**. 2014. Total suspended solids,  
1053 nutrient and pesticide loads (2011–2012) for rivers that discharge to the Great Barrier Reef – Great  
1054 Barrier Reef Catchment Loads Monitoring Program 2011–2012. Department of Science, Information  
1055 Technology, Innovation and the Arts. Brisbane, Queensland. 94p. Available from:  
1056 [http://www.reefplan.qld.gov.au/measuring-success/paddock-to-reef/assets/2011-2012-gbr-](http://www.reefplan.qld.gov.au/measuring-success/paddock-to-reef/assets/2011-2012-gbr-catchment-loads-report.pdf)  
1057 [catchment-loads-report.pdf](http://www.reefplan.qld.gov.au/measuring-success/paddock-to-reef/assets/2011-2012-gbr-catchment-loads-report.pdf)

1058 Waters, D.K., Carroll, C., Ellis, R., Hateley, L., McCloskey, G.L., Packett, R., Dougall, C., Fentie, B.,  
1059 2014. Modelling reductions of pollutant loads due to improved management practices in the Great  
1060 Barrier Reef catchments – Whole of GBR, Technical Report, Volume 1, Queensland Department of  
1061 Natural Resources and Mines, Toowoomba, Queensland (ISBN: 978-1- 7423-0999). Available from:  
1062 [http://www.reefplan.qld.gov.au/measuring-success/paddock-to-reef/assets/great-barrier-reef-](http://www.reefplan.qld.gov.au/measuring-success/paddock-to-reef/assets/great-barrier-reef-catchment-modelling-report.pdf)  
1063 [catchment-modelling-report.pdf](http://www.reefplan.qld.gov.au/measuring-success/paddock-to-reef/assets/great-barrier-reef-catchment-modelling-report.pdf) .

1064 Webster, T.M.U., Bury, N., van Aerle, R., Santos, E.M., 2013. Global Transcriptome Profiling Reveals  
1065 Molecular Mechanisms of Metal Tolerance in a Chronically Exposed Wild Population of Brown Trout.  
1066 Environmental Science & Technology 47, 8869-8877.

1067  
1068 Wei, YH, Shi, XJ, Zhang, HX, Wang, JS, Zhou, BS, Dai JY., 2009. Combined effects of polyfluorinated  
1069 and perfluorinated compounds on primary cultured hepatocytes from rare minnow (*Gobiocypris*  
1070 *rarus*) using toxicogenomic analysis. Aquatic Toxicology 95,27-36.

1071  
1072 Wiegand, C., Pflugmacher, S., Giese, M., Frank, H., Steinberg, C., 2000. Uptake, toxicity, and effects  
1073 on detoxication enzymes of atrazine and trifluoroacetate in embryos of zebrafish. Ecotoxicology and  
1074 Environmental Safety 45, 122-131.

1075  
1076

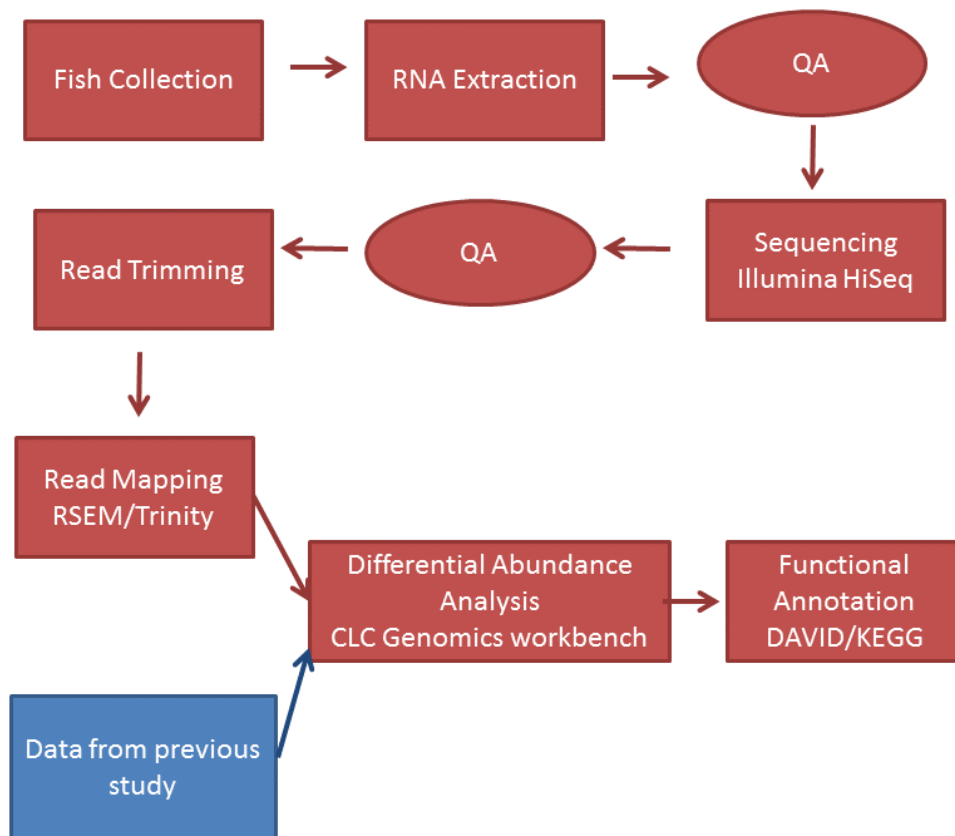


Figure S1. Workflow for this study, showing how data from the previous study were incorporated. These data were previously generated using the same analysis pipeline. Adapted from Hook et al., 2017.

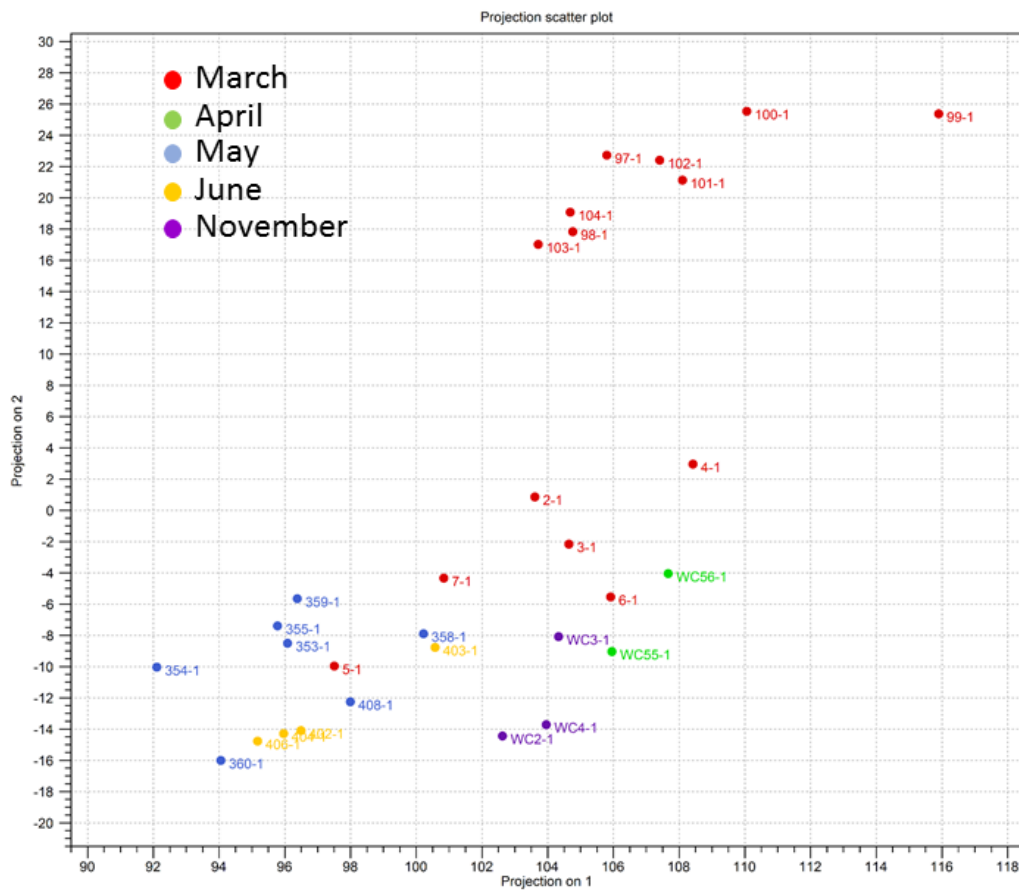


Figure S2. Principle components based visualisation of the plus one, log transformed hepatic transcriptome based on the time of year when the fish was collected. Each dot represents an individual fish.

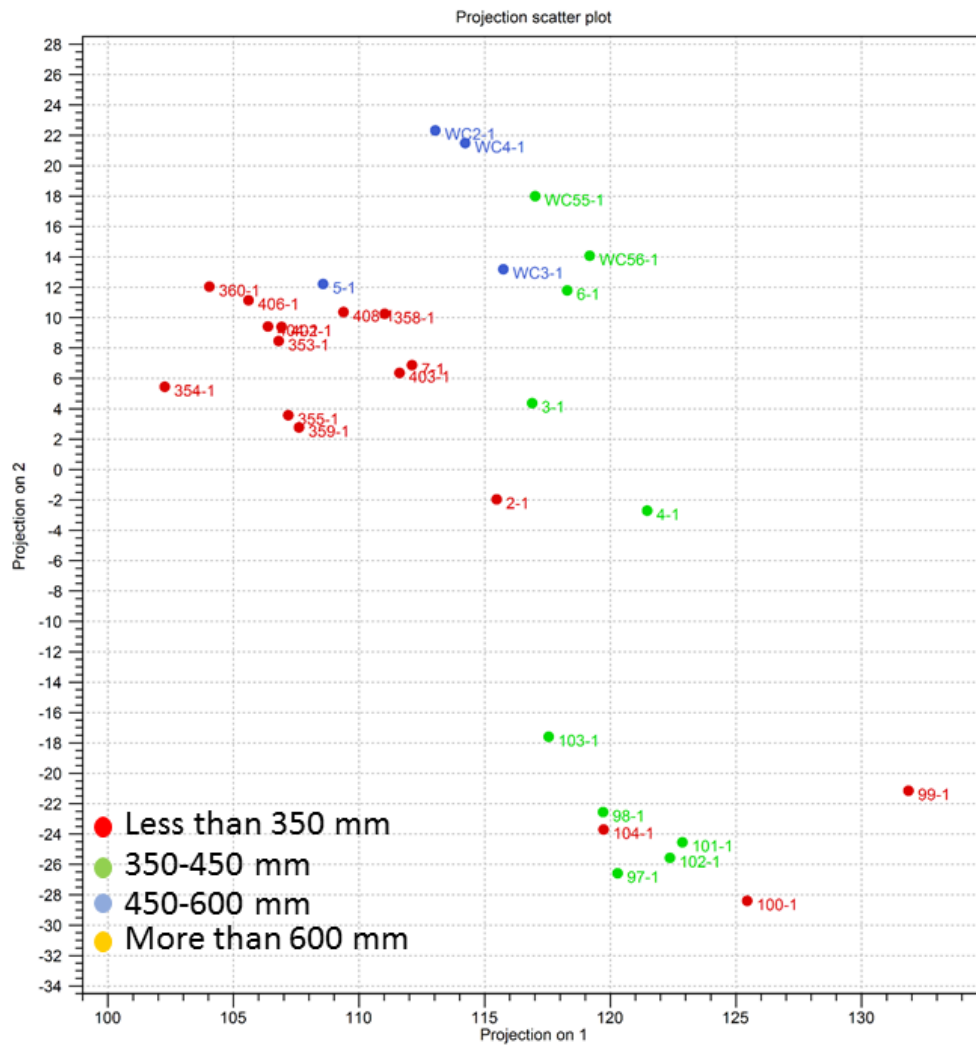


Figure S3. Principle components based visualisation of the plus one, log transformed hepatic transcriptome based on the size (in standard length) of the fish collected. Each dot represents an individual fish.

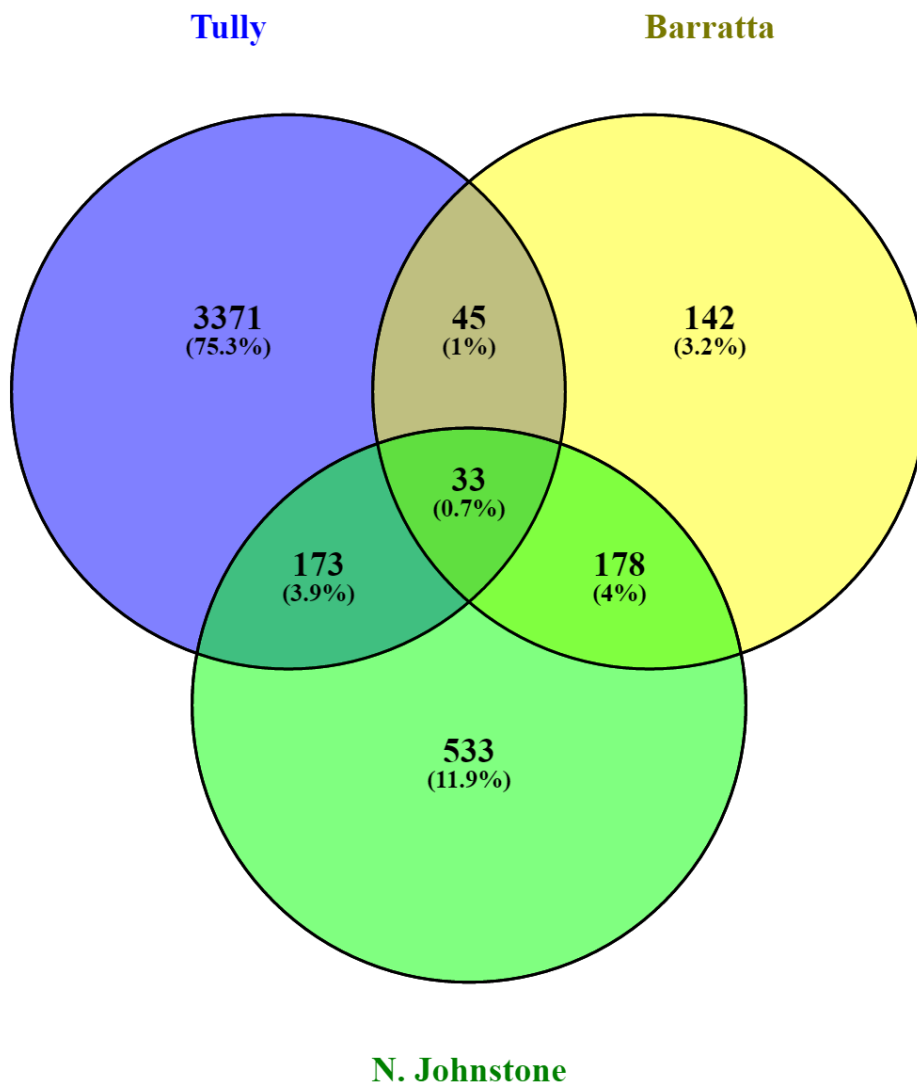


Figure S4. Similarities in the profiles of differentially abundant transcripts in livers for fish from each impacted river relative to both reference sites. Figure was created using Oliveros, J.C. (2007-2015) Venny. An interactive tool for comparing lists with Venn's diagrams. <http://bioinfogp.cnb.csic.es/tools/venny/index.html>.

Table S1. The number of reads for each sample and the percentage that aligned

M is million abbreviated. Fish numbers 2-7 were collected from the Daintree River, fish numbers 97-104 were collected from the Tully River.

Previous study (Hook et al., 2017)

Sample	2	3	4	5	6	7	97	98	99	100	101	102	103	104
Number of reads	28M	27M	26M	25M	25M	25M	28M	28M	31M	26M	28M	25M	26M	26M
% aligned	41.73%	47.50%	46.35%	47.28%	45.35%	42.35%	47.22%	47.81%	46.99%	46.17%	47.23%	47.92%	39.95%	47.88%

Current study

Sample	353	354	355	358	359	360	402	403	404	406	408	WC1	WC2	WC3	WC4	WC5	WC51	WC55	WC56
Number of reads	14M	14M	13M	13M	13M	13M	12M	13M	12M	12M	13M	12M	12M	12M	12M	12M	13M	13M	13M
% aligned	58.55%	60.22%	64.34%	59.7%	60.71%	57.89%	57.40%	56.01%	61.30%	62.12%	62.12%	62.97%	57.30%	58.17%	48.71%	58.59%	57.01%	53.14%	58.08%

Supplementary table S2. Gene lists go here.



Table S3. Functional pathways to which differentially abundant transcripts in the list of differentially abundant transcripts relative to the transcriptome as a whole could be significantly mapped

More abundant in the Tully River

Term	Number of transcripts	% of transcripts	Fold Enrichment	Benjamini-Hochberg corrected p value
phosphoprotein	362	19.30	1.60	1.45E-27
acetylation	151	8.05	1.84	7.16E-12
protein transport	40	2.13	2.65	9.64E-06
cytoplasm	154	8.21	1.48	1.75E-05
lysosome	19	1.01	4.09	8.06E-05
atp-binding	74	3.94	1.79	9.42E-05
nucleotide-binding	88	4.69	1.68	1.05E-04
alternative splicing	289	15.41	1.24	1.10E-04
hydrolase	82	4.37	1.69	1.40E-04
transferase	71	3.78	1.64	2.06E-03
compositionally biased region:Pro-rich	59	3.14	1.96	2.46E-03
splice variant	289	15.41	1.24	2.48E-03
actin-binding	21	1.12	2.73	3.90E-03
disease mutation	77	4.10	1.55	4.04E-03
endoplasmic reticulum	42	2.24	1.89	4.10E-03
oxidoreductase	35	1.87	2.00	5.62E-03
ligase	23	1.23	2.42	6.98E-03
lipid metabolism	15	0.80	3.19	7.39E-03
sequence variant	424	22.60	1.13	0.01
compositionally biased region:Glu-rich	24	1.28	2.71	0.02
kinase	38	2.03	1.77	0.02
GO:0005773~vacuole	22	1.17	2.57	0.03
GO:0005829~cytosol	72	3.84	1.59	0.03
nadp	14	0.75	2.88	0.03
GO:0000267~cell fraction	59	3.14	1.60	0.03
mutagenesis site	95	5.06	1.48	0.03
GO:0000166~nucleotide binding	113	6.02	1.43	0.03
polymorphism	395	21.06	1.10	0.04
GO:0001882~nucleoside binding	84	4.48	1.48	0.04
GO:0001883~purine nucleoside binding	83	4.42	1.47	0.04
GO:0005764~lysosome	19	1.01	2.65	0.04
GO:0000323~lytic vacuole	19	1.01	2.65	0.04
GO:0017076~purine nucleotide binding	97	5.17	1.43	0.04

Less abundant in the Tully

Term	Number of transcripts	% of transcripts	Fold Enrichment	Benjamini-Hochberg corrected p value
109.Chemokine_families	4	1.35	11.46	3.47E-03
PIRSF001950:small inducible chemokine, C/CC types	4	1.35	32.16	0.01
chemotaxis	5	1.69	19.08	0.02
IPR000827:Small chemokine, C-C group, conserved site	4	1.35	39.78	0.02
SM00199:SCY	4	1.35	22.71	0.03
cytokine	6	2.03	9.11	0.04
IPR001811:Small chemokine, interleukin-8-like	4	1.35	24.26	0.05

Less abundant in Barratta Creek

Term	Number of transcripts	% of transcripts	Fold Enrichment	Benjamini-Hochberg corrected p value
protein transport	36	2.18	2.78	1.37E-05
atp-binding IPR011993:Pleckstrin homology-type	61	3.69	1.72	3.82E-03
GO:0030695~GTPase regulator activity	25	1.51	2.92	4.59E-03
GO:0060589~nucleoside-triphosphatase regulator activity	28	1.69	2.39	0.01
actin-binding GO:0017048~Rho GTPase binding	29	1.75	2.42	0.02
SH2 domain GO:0051020~GTPase binding	18	1.09	2.73	0.02
GO:0005096~GTPase activator activity	8	0.48	7.25	0.02
GO:0017016~Ras GTPase binding	11	0.67	3.72	0.03
IPR000198:RhoGAP GO:0003779~actin binding	12	0.73	3.79	0.03
GO:0031267~small GTPase binding	18	1.09	2.82	0.03
	11	0.67	4.16	0.04
	10	0.60	5.28	0.04
	22	1.33	2.32	0.05
	11	0.67	3.75	0.05

Less abundant in N Johnstone

Term	Number of transcripts	% of transcripts	Fold Enrichment	Benjamini-Hochberg corrected p value
cell adhesion	12	3.07	3.99	0.02

Table S4. KEGG functional categories to which the enriched transcripts in fish from each transcriptome can be mapped.

Pathway	Number of sequences in gene list	Number of unique enzymes in gene list	Number of sequences in transcriptome	Expected number of sequences
<i>More abundant in fish from the Tully River</i>				
Purine metabolism	30	19	237	24
Glycerophospholipid metabolism	24	15	88	9
Glycerolipid metabolism	19	9	94	10
Glycolysis / gluconeogenesis	18	12	76	8
Fatty acid degradation	18	9	41	6
Lysine degradation	16	10	50	7
Glycine, serine and threonine metabolism	16	11	45	6
Pyruvate metabolism	16	11	47	5
Sphingolipid metabolism	15	6	59	8
Tryptophan metabolism	15	7	45	6
Pentose phosphate pathway	14	10	47	5
Citrate cycle (TCA cycle)	14	11	48	7
Glutathione metabolism	14	7	43	6
Arginine and proline metabolism	13	11	46	6
Ether lipid metabolism	13	6	27	4
Valine, leucine and isoleucine degradation	13	11	27	4
Phosphatidylinositol signalling system	13	8	109	11
Oxidative phosphorylation	13	8	63	9

Aminoacyl-tRNA biosynthesis	12	13	45	6
Inositol phosphate metabolism	12	7	94	10
Propanoate metabolism	12	9	36	5
Glyoxylate and dicarboxylate metabolism	12	9	26	4
Arachidonic acid metabolism	12	6	37	5
mTOR signalling	12	2	31	4
beta-Alanine metabolism	6	6	25	4
Amino sugar and nucleotide sugar metabolism	11	11	53	7
Tyrosine metabolism	11	12	26	4
Alanine, aspartate and glutamate metabolism	10	13	40	6
Biosynthesis of unsaturated fatty acids	10	4	25	4
Drug metabolism - cytochrome P450	10	5	32	5
Metabolism of xenobiotics by cytochrome P450	10	5	36	5
Aminobenzoate degradation	10	5	28	4
Starch and sucrose metabolism	10	11	37	5
alpha-linolenic acid metabolism	9	4	20	3
Chloroalkane and chloroalkene degradation	9	3	11	1
Pentose and glucuronate interconversions	6	3	24	3
Steroid hormone biosynthesis	8	5	30	4

Butanoate metabolism	8	10	20	3
Drug metabolism - other enzymes	8	8	53	5
Galactose metabolism	7	6	62	9
Retinol metabolism	7	4	32	4
Porphyrin metabolism	7	7	24	3
Steroid biosynthesis	7	5	10	1
Selenocompound metabolism	6	5	14	2
Nicotinate and nicotinamide metabolism	6	3	31	3
N-glycan biosynthesis	6	4	25	3
Other glycan degradation	6	5	34	5
Histidine metabolism	6	4	12	1
Ascorbate and aldarate metabolism	5	2	12	1
Folate biosynthesis	5	5	10	1
Cysteine and methionine metabolism	5	7	40	4
Phenylalanine metabolism	5	7	32	4
Linoleic Acid	5	2	14	2
Various types of N-glycan biosynthesis	5	3	21	3
Limonene and pinene degradation	5	2	6	1
Arginine biosynthesis	5	5	46	6
Cyanoamino acid metabolism			20	3
<i>Less abundant in fish from the Tully River</i>				
Glycolysis / gluconeogenesis	18	12	76	8

Cysteine and methionine metabolism	5	4	40	4
<i>Less abundant in fish from the N Johnstone River</i>				
Glycolysis / gluconeogenesis	6	6	76	8
<i>Less abundant in fish from Barratta Creek</i>				
Purine metabolism	35	22	237	24
Glycolysis / gluconeogenesis	19	12	76	8
Phosphatidylinositol signalling system	16	7	109	11
Fructose and mannose metabolism	14	8	55	8
Inositol phosphate metabolism	13	6	94	13
Oxidative phosphorylation	13	4	63	9
Galactose metabolism	12	6	62	9
T cell receptor signalling pathway	12	2	82	8
Amino sugar and nucleotide sugar metabolism	9	12	53	7
Pyrimidine metabolism	11	8	105	10
Starch and sucrose metabolism	11	8	37	5
Pentose phosphate pathway	10	5	47	5
Pyruvate metabolism	7	6	47	5
Glycine, serine and threonine metabolism	8	8	45	5
Pentose phosphate pathway	8	3	47	5
Drug metabolism - other enzymes	7	5	53	5

Arginine and proline metabolism	6	4	46	6
Pentose and glucuronate interconversions	6	4	24	3
Ester lipid metabolism	6	5	27	4
Lysine degradation	6	4	50	7
Aminoacyl-tRNA biosynthesis	5	5	45	6
Nicotinate and nicotinamide metabolism	5	4	31	3
Glutathione metabolism	5	4	43	6
Tryptophan metabolism	5	3	45	6

Only those pathways with five or more sequences that are relevant to eukaryotes are presented. The number of sequences expected to be included in the gene list due to chance alone is presented for comparison.