

Global impacts of the 1980s regime shift

Reid, P.C. , Hari, R.E. , Beaugrand, G. , Livingstone, D.M. , Marty, C. , Straile, D. , Barichivich, J. , Goberville, E. , Adrian, R. , Aono, Y. , Brown, R. , Foster, J. , Groisman, P. , H  laou  t, P. , Hsu, H-H , Kirby, R. , Knight, J. , Kraberg, A. , Li, J. , Lo, T-T , Myneni, R.B. , North, R.P. , Pounds, J.A. , Sparks, T. , Stubi, R. , Tian, Y. , Wiltshire, K.H. , Xiao, D. and Zhu, Z

Published PDF deposited in [Curve](#) November 2015

Original citation:

Reid, P.C. , Hari, R.E. , Beaugrand, G. , Livingstone, D.M. , Marty, C. , Straile, D. , Barichivich, J. , Goberville, E. , Adrian, R. , Aono, Y. , Brown, R. , Foster, J. , Groisman, P. , H  laou  t, P. , Hsu, H-H , Kirby, R. , Knight, J. , Kraberg, A. , Li, J. , Lo, T-T , Myneni, R.B. , North, R.P. , Pounds, J.A. , Sparks, T. , Stubi, R. , Tian, Y. , Wiltshire, K.H. , Xiao, D. and Zhu, Z (2015) Global impacts of the 1980s regime shift. *Global Change Biology* , volume In press. DOI: 10.1111/gcb.13106

<http://dx.doi.org/10.1111/gcb.13106>

Wiley

Creative Commons Attribution License

Copyright   and Moral Rights are retained by the author(s) and/ or other copyright owners. A copy can be downloaded for personal non-commercial research or study, without prior permission or charge. This item cannot be reproduced or quoted extensively from without first obtaining permission in writing from the copyright holder(s). The content must not be changed in any way or sold commercially in any format or medium without the formal permission of the copyright holders.

CURVE is the Institutional Repository for Coventry University

<http://curve.coventry.ac.uk/open>

Global impacts of the 1980s regime shift

PHILIP C. REID^{1,2,3}, RENATA E. HARI⁴, GRÉGORY BEAUGRAND^{1,5}, DAVID M. LIVINGSTONE⁴, CHRISTOPH MARTY⁶, DIETMAR STRAILE⁷, JONATHAN BARICHIVICH^{8,9}, ERIC GOBERVILLE^{1,5}, RITA ADRIAN¹⁰, YASUYUKI AONO¹¹, ROSS BROWN¹², JAMES FOSTER¹³, PAVEL GROISMAN^{14,15}, PIERRE HÉLAOUËT¹, HUANG-HSIUNG HSU¹⁶, RICHARD KIRBY², JEFF KNIGHT¹⁷, ALEXANDRA KRABERG¹⁸, JIANPING LI^{19,20}, TZU-TING LO²¹, RANGA B. MYNENI²², RYAN P. NORTH^{4,23}, J. ALAN POUNDS²⁴, TIM SPARKS^{25,26,27,28}, RENÉ STÜBI²⁹, YONGJUN TIAN^{30,31}, KAREN H. WILTSHIRE¹⁸, DONG XIAO³² and ZAICHUN ZHU^{33,34}

¹Sir Alister Hardy Foundation for Ocean Science, The Laboratory, Citadel Hill, Plymouth PL1 2PB, UK, ²Marine Institute, Plymouth University, Drake Circus, Plymouth PL4 8AA, UK, ³Marine Biological Association of the UK, The Laboratory, Citadel Hill, Plymouth PL1 2PB, UK, ⁴Eawag, Swiss Federal Institute of Aquatic Science and Technology, Überlandstrasse 133, CH-8600 Dübendorf, Switzerland, ⁵Centre National de la Recherche Scientifique, Laboratoire d'Océanologie et de Géosciences (LOG), UMR 8187 LOG, Université des Sciences et Technologies de Lille, BP 80, 62930 Wimereux, France, ⁶WSL Institute for Snow and Avalanche Research SLF, Flüelastrasse 11, CH-7260 Davos, Switzerland, ⁷Department of Biology, Limnological Institute, University of Konstanz, 78464 Konstanz, Germany, ⁸Climatic Research Unit, School of Environmental Sciences, University of East Anglia, Norwich NR4 7TJ, UK, ⁹Laboratoire des Sciences du Climat et de l'Environnement, CEA-CNRS-UVSQ, L'Orme des Merisiers, 91191 Gif-sur-Yvette, France, ¹⁰Department of Ecosystem Research, Leibniz-Institute of Freshwater Ecology and Inland Fisheries, Müggelseedamm 301, D-12587 Berlin, Germany, ¹¹Graduate School of Life and Environmental Sciences, Osaka Prefecture University, Sakai 599-8531, Japan, ¹²Climate Research Division, Science and Technology Branch, Environment Canada Ouranos, 550 Sherbrooke St. West, 19th Floor, Montréal, QC H3A 1B9, Canada, ¹³Code 917, NASA/Goddard Space Flight Center, Greenbelt, MD 20771, USA, ¹⁴National Centers for Environment Information - Center for Weather and Climate, Federal Building, 151 Patton Avenue, Asheville, NC 28801, USA, ¹⁵P.P. Shirshov Institute for Oceanology, RAS, 36 Nakhimovsky Avenue, 117997 Moscow, Russia, ¹⁶Research Center for Environmental Changes, Academia Sinica, 128 Academia Road, Section 2, Nankang, Taipei 115, Taiwan, ¹⁷Met Office, Hadley Centre, FitzRoy Road, Exeter, Devon EX1 3PB, UK, ¹⁸Alfred-Wegener Institute for Polar and Marine Research, Biologische Anstalt Helgoland, Kurpromenade 201, 27498 Helgoland, Germany, ¹⁹College of Global Change and Earth System Science (GCESS), Beijing Normal University, Beijing 100875, China, ²⁰Joint Center for Global Change Studies, Beijing 100875, China, ²¹Weather Forecast Center, Central Weather Bureau, 64 Gongyuan Road, Taipei 10048, Taiwan, ²²Department of Earth and Environment, Boston University, 685 Commonwealth Avenue, Boston, MA 02215, USA, ²³Helmholtz-Zentrum Geesthacht, Institute of Coastal Research, Max-Planck-Str. 1, D-21502 Geesthacht, Germany, ²⁴Monteverde Cloud Forest Preserve, Tropical Science Center, Santa Elena, Puntarenas 5655-73, Costa Rica, ²⁵Institute of Zoology, Poznań University of Life Sciences, Wojska Polskiego 71 C, 60-625 Poznań, Poland, ²⁶Faculty of Engineering, Environment and Computing, Coventry University, Coventry CV1 5FB, UK, ²⁷Fachgebiet für Ökologikologie, Technische Universität München, Hans-Carl-von-Carlowitz-Platz 2, 85354 Freising, Germany, ²⁸Institute for Advanced Study, Technische Universität München, Lichtenbergstrasse 2a, 85748 Garching, Germany, ²⁹Federal Office of Meteorology and Climatology, MeteoSwiss, Ch. de l'Aérolologie 1, CH-1530 Payerne, Switzerland, ³⁰Fisheries College, Ocean University of China, Yushan Road 5, Qingdao 266003, China, ³¹Japan Sea National Fisheries Research Institute, Fisheries Research Agency, Chuo-ku, Niigata 951-8121, Japan, ³²Chinese Academy of Meteorological Sciences, Beijing 100081, China, ³³State Key Laboratory of Remote Sensing Science, Institute of Remote Sensing and Digital Earth, Chinese Academy of Sciences, Beijing 100101, China, ³⁴Center for Applications of Spatial Information Technologies in Public Health, Beijing 100101, China

Abstract

Despite evidence from a number of Earth systems that abrupt temporal changes known as regime shifts are important, their nature, scale and mechanisms remain poorly documented and understood. Applying principal component analysis, change-point analysis and a sequential *t*-test analysis of regime shifts to 72 time series, we confirm that the 1980s regime shift represented a major change in the Earth's biophysical systems from the upper atmosphere to the depths of the ocean and from the Arctic to the Antarctic, and occurred at slightly different times around the world. Using historical climate model simulations from the Coupled Model Intercomparison Project Phase 5 (CMIP5) and statistical modelling of historical temperatures, we then demonstrate that this event was triggered by rapid global warming from anthropogenic plus natural forcing, the latter associated with the recovery from the El Chichón

Correspondence: Philip C. Reid, tel. +441752 633269, fax +441752 600015, e-mail: pcre@sahfos.ac.uk

volcanic eruption. The shift in temperature that occurred at this time is hypothesized as the main forcing for a cascade of abrupt environmental changes. Within the context of the last century or more, the 1980s event was unique in terms of its global scope and scale; our observed consequences imply that if unavoidable natural events such as major volcanic eruptions interact with anthropogenic warming unforeseen multiplier effects may occur.

Keywords: climate, Earth systems, global change, regime shift, statistical analysis, time series, volcanic forcing

Received 23 July 2015 and accepted 3 September 2015

Introduction

Regime shifts are abrupt, substantial and persistent changes in the state of natural systems. Such shifts have been observed in the atmosphere (Lo & Hsu, 2010; Xiao *et al.*, 2012), ecosystems (Hastings & Wysham, 2010) and human social systems (Campbell & Allen, 2001). Three regime shifts (1970s, 1980s and 1990s), distinguished by marked increases in temperatures or by abrupt temporal changes across different biophysical systems, have been identified in the last few decades (Hare & Mantua, 2000; Reid *et al.*, 2001; Gong & Ho, 2002; Yasunaka & Hanawa, 2002; Peterson & Schwing, 2003; Beaugrand *et al.*, 2013). Documented until now at ocean basin or regional scales, the mechanisms behind these events, their environmental interactions, and the synchrony and scale of their effects around the globe are poorly understood. There is thus a considerable research gap with many disparate observations by different scientific disciplines, but no comprehensive overall assessment. Here, we address this gap by focusing on the 1980s regime shift and show, using three independent statistical methods that this shift took place on a planetary scale and involved the carbon cycle (Beaulieu *et al.*, 2012b); disease (Vezzulli *et al.*, 2012); and biotic, physical and chemical components of land (Myneni *et al.*, 1997; Brandt *et al.*, 2013), freshwater (Hari *et al.*, 2006), precipitation (Tao *et al.*, 2015), marine (Möllumann & Diekmann, 2012; Beaugrand *et al.*, 2015) as well as cryospheric (Brown & Robinson, 2011) and atmospheric (Lo & Hsu, 2010; Xiao *et al.*, 2012) Earth systems. A total of 72 time series was processed and analysed statistically to represent as many natural systems as possible, and to illustrate shiftlike abrupt changes in a '1980s period of interest' (1983 to 1990) between the volcanic eruptions of El Chichón and Pinatubo (see Materials and methods).

To explore possible mechanisms behind the 1980s regime shift, we used historical climate model simulations from the Coupled Model Intercomparison Project Phase 5 (CMIP5) (Jones *et al.*, 2013) together with statistical modelling (Folland *et al.*, 2013) of the main anthropogenic radiative forcing and natural (volcanic and solar) factors influencing global mean surface temperature. Using these approaches, we show that the rapid cooling of the Earth's surface (Rohbock, 2000), and

especially of the oceans (Church *et al.*, 2005), initiated by the El Chichón volcanic eruption of 1982 was followed by a recovery reinforced by anthropogenic warming. It is the scale and speed of these combined heating effects that we propose contributes to the synchronization of the regime shift between different systems. Although temperature appears to be the main forcing factor, volcanic and anthropogenic aerosols and their interactions with clouds (IPCC Chap. 7, 2013) and the brightening effect described by Wild (2009) may also have contributed. The 1980s regime shift is an example of unforeseen compounding effects that may occur if unavoidable natural events such as major volcanic eruptions interact with anthropogenic warming.

Materials and methods

Data

Time series selection. Long time series of variables representing the various key components of the climate system (drivers) and a wide range of environmental and ecological indicators (responders) were used for our study. Half the 72 time series represent global and hemispheric (26) to local (10) land, sea and freshwater temperatures, with the other half covering, at global to local scales, the carbon cycle (3) and the following natural systems: atmosphere (9), cryosphere (6), marine hydrosphere (2), marine biosphere (3), terrestrial hydrosphere (3) and terrestrial biosphere (10). We have used a variety of different forms of measurements with one value per year: for example, averaged over single months, seasons or yearly, or in the case of phenology the timing date. Some of the time series presented are averages of data sets where our analyses showed the shift in most of the members, for example 18 river water temperatures averaged for Switzerland or many gridded temperature data sets; others are representatives of vertical profiles in the atmosphere or ocean that show similar shifts at other different heights or depths. The majority of the time series are from the Northern Hemisphere. Few unbroken long-term time series from the tropics exist that have been produced using the same standard protocols over time. Furthermore, time series data, other than for land surface temperature (LST) and sea surface temperature (SST) from ocean areas outside the North Atlantic and North Pacific, are very sparse.

Considerable effort was put into the search for long-term time series and included the following: submissions from recommendations by the authors, downloading from open-access

online databases, requesting data from original literature sources after an extensive search for long-term time series and a number of exploratory searches for time series to cover perceived gaps by theme, for example natural system and geographical region. In addition, data sets were processed to cover large geographical regions, for example continents and ocean basins, independently of global and hemispheric data that are often readily available. All acquired time series were processed in the same way. The resulting compilation of data was dependent on sampling, monitoring location and availability, and does not claim to be comprehensive or geographically representative of the whole world.

For inclusion in the analysed database, continuous data sets needed to be within the period 1946 to 2012 and start by 1980 at the latest. The year 1946 was chosen, when possible, as the start date to exclude the poor sampling during World War II. There were two exceptions, one to allow satellite information to be included using the Normalized Difference Vegetation Index (NDVI), start 1982 (Myneni *et al.*, 1997) and the other mesopelagic fish eggs, start 1981 (Fujino *et al.*, 2013).

Data sources. The 72 time series selected for more detailed study were chosen to yield as wide a global geographical coverage as possible; they include data from single sites, sets of data, and data averaged at global, hemispheric, continental and ocean scales. The data used in the study can be obtained from Table S1 or from the corresponding author. Citations for all the time series analysed are given in Table S2. The years from 1983 to 1990, between the major volcanic eruptions of El Chichón (1982) and Pinatubo (1991), were focused on as a 'period of interest' to study the 1980s regime shift.

Two data sources for temperature were used to derive continental, oceanic, global and hemispheric means. First, pre-calculated 5° grid annual mean anomalies with respect to 1961–1990 produced by the Hadley Centre of the UK Met Office and the Climatic Research Unit, University of East Anglia (<http://www.metoffice.gov.uk/hadobs/index.html>), were downloaded: HadCRUT4.3.0.0 (combined LST and SST); HadSST3.1.1.0 (SST); and CRUTEM4.3.0.0 (LST), the latter calculated from ~5500 monthly meteorological station temperatures. Second, monthly mean data were downloaded from the NASA Global Historical Climatology Network (GHCN) data set (<ftp://ftp.ncdc.noaa.gov/pub/data/ghcn/v3>). While the first set was prepared by the provider, with this data set we were able to preprocess the data ourselves to take into account gaps in sampling in time and space before calculating global, hemispheric and continental means.

Processing the GHCN global temperature data set. We used data from the GHCN data set to provide an independent temperature time series that is based on real and not gridded data. After preliminary investigations, the data set used for further study was limited to land meteorological stations from continental regions (6449 stations). The distribution of these stations was not random and did not systematically cover all regions of the world with a similar density, and many had missing data. To address these issues, the sequence of subsequent processing followed the order:

- 1 To reduce the number of stations with missing data, new regional mean time series were calculated for areas where adjacent weather stations were likely to show similar temperatures. A sensitivity analysis was carried out to check the similarity in data from stations enclosed within circles of diameter 50, 100, 150 and 200 km. A circle with a diameter of 100 km gave the best result, so 'circle time series' were calculated by averaging the data from stations within circles of this diameter.
- 2 To decide which stations to include within each circle time series, a threshold test was applied to filter the station time series for missing years. Seven options were tested: with 5, 10, 15, 20, 25 or 30 missing years, or with no filtering. A threshold with a maximum of 10 years' missing data was selected, as using this threshold the signal was not altered by missing values.
- 3 For the calculation of annual means, at least nine sampled months were required, otherwise a missing value was attributed.
- 4 A final set of time series was then generated for each selected 100-km-diameter circle to give 302 circles in Europe, 624 in Asia, 228 in Australia, 97 in Africa, 1932 in North America and 108 in South America, with 2977 for the Northern Hemisphere, 314 for the Southern Hemisphere and 3291 for the world. Of these 3291 time series, the maximum number of circles that overlap is 37.
- 5 All the GHCN time series were anomalized with respect to their own mean over the period 1961–1990 for comparison with the Hadley and CRU time series.
- 6 A control sensitivity analysis was applied to determine whether any change in the number of circle time series per year coincided with observed regime shifts in the data. There were no major changes in the number of missing stations until 1989/1990 in some regions of the world and more globally in 2000; the former reduction in stations coincided with the break-up of the USSR. This result gives increased confidence to the regime shifts identified in the GHCN data prior to 1989.

Statistical analysis

Identifying regime shifts. Three different statistical methods were used to identify regime shifts.

First, a standardized principal component analysis (PCA) (Beaugrand *et al.*, 2002) was applied to the whole data set. The period 1968 to 2010 was selected for the analysis as at least 58 of the 72 time series (80%) had data throughout this interval. PCA is not sensitive to temporal autocorrelation. Results of the analysis are shown in Fig. 1 and Table 1.

Second, we used a change-point analysis (Taylor, 2000) to identify the timing of the shift in the first principal component; a technique that is simple, is not sensitive to outliers and takes into account the effects of temporal autocorrelation when calculating the probability of the shift. The cumulative sums of the time series (i.e. the first principal component) were calculated (Ibañez *et al.*, 1993; Kirby *et al.*, 2009); then, the first difference in the cumulative sums was estimated, followed by a Monte Carlo test to determine the probability that a shift had

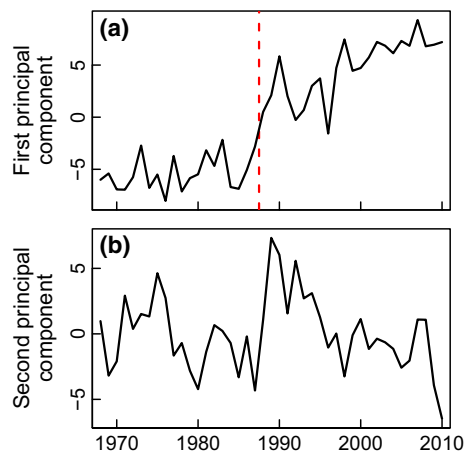


Fig. 1 A standardized principal component analysis (PCA) of long-term changes in 72 time series. (a) First principal component (49% total variance) and (b) second principal component (12% total variance). The red dashed line marks a significant regime shift year in 1987 ($P \leq 0.05$), identified by both principal component and change-point analyses.

occurred based on the number of times the simulated first difference exceeded the observed amplitude. About 100,000 runs were performed, and the simulated time series were retained if their order-1 autocorrelation was higher or equal to the one observed in the original time series.

Third, for standardization and comparison of individual time series, a 'multiple' sequential *t*-test analysis of regime shifts (STARS) based on the Rodionov method (Rodionov, 2004; Rodionov & Overland, 2005) was applied. This method was used individually on each time series; the results in the period of interest are given in Figs 2–6 and Table 2.

Variant of the Rodionov method. Generally, a *t*-test examines whether the means of two sample populations differ significantly, based on the standard deviations and on the number of values in each sample. The existence of a trend in one or both samples is not excluded.

The STARS method (Rodionov, 2004; Rodionov & Overland, 2005) tests whether the end of one period (regime) of a certain length is different from a subsequent period (new regime). The cumulative sum of normalized deviations from the hypothetical mean level of the new regime is calculated, and then compared with the mean level of the preceding regime. A shift year is detected if the difference in the mean levels is statistically significant according to a Student's *t*-test. In his third paper, Rodionov (2006) shows how autocorrelation can be accounted for. From each year of the time series (except edge years), the rules are applied backwards and forwards to test that year as a potential shift year. The method is, therefore, a running procedure applied on sequences of years within the time series.

The multiple STARS method used here repeats the procedure for 20 test-period lengths ranging from 6 to 25 years that are, for simplicity (after testing many variations), of the same length on either side of the regime shift. The last year of the

Table 1 Standardized principal component analysis. Results of an analysis performed on the whole 72 time series as an entity for the period 1968–2010 where 80% of the time series had no gaps. The first two normalized eigenvectors show the correlation between each variable and the first two principal components. Colour code for eigenvector contribution: positive red 0.50–0.75, red bold 0.76–1; negative the same in green (See also Fig. 1). See Table 2 legend for 'system' acronyms

			Eigenvector contribution	
			First	Second
System			First	Second
Fig. 2				
a	Swiss ~26 km stratospheric temperature	T	–0.68	–0.01
b	Swiss ~5 km tropospheric temperature	T	0.74	0.37
c	Meridional wind speed 60–75°N ~5 km a.s.l.	At	–0.49	–0.57
d	Zonal wind speed 60–75°N ~5 km a.s.l.	At	0.12	0.76
e	China spring dust storm frequency	At	–0.79	–0.05
f	Global tropical hurricane/storm (d)	At	0.20	0.35
g	NH seasonally varying Index (SV-NAM)	At	0.27	0.73
h	Arctic Oscillation Index (AO)	At	0.23	0.87
i	North Atlantic Oscillation (NAO DJFM)	At	0.18	0.72
j	Arctic temperature (SST and LST)	T	0.82	–0.18
k	Arctic sea level pressure	At	–0.26	–0.86
l	Alaska atmospheric CO ₂ , Apr-Sep	CO ₂	–0.70	–0.39
m	Alaska atmospheric CO ₂ , Oct-Mar	CO ₂	0.63	0.37
n	Global CO ₂ net land uptake	CO ₂	0.06	0.46
o	NH integrated temperature growing season	T	0.87	–0.07
p	Western Antarctica temperature (LST)	T	0.43	0.00
q	Western Antarctica sea-ice extent	CR	–0.53	–0.24
r	NH spring snow extent	CR	–0.60	–0.46
s	Swiss snow days, Dec-Mar	CR	–0.49	–0.54
t	Baltic Sea sea-ice extent	CR	–0.43	–0.62
u	Arctic sea-ice volume (Sep)	CR	–0.89	0.17
v	NH sea-ice extent (Sep)	CR	–0.85	0.04
w	Western USA Wildfire duration (d)	TB	0.74	–0.02
x	NH satellite vegetation	TB	0.85	–0.33
y	NH start thermal growing season	TB	–0.76	–0.16
z	NH length thermal growing season	TB	0.82	–0.05

Table 1 (Continued)

			Eigenvector contribution	
			First	Second
		System		
aa	NH end thermal growing season	TB	0.67	−0.27
ab	Japan Kyoto cherry blossom	TB	−0.51	−0.17
ac	UK sand martin arrival	TB	−0.81	−0.21
ad	Germany grape vine ripening date	TB	−0.67	−0.29
ae	Baltic river Daugava winter flow	TH	0.57	0.31
af	Swiss river temperature	T	0.81	0.31
ag	Swiss river pH	TH	0.70	−0.05
ah	North Sea phytoplankton biomass	MB	0.58	0.22
ai	North Sea temperature	T	0.77	0.30
aj	North Sea 50 m depth salinity	MH	0.55	0.49
ak	Japan Sea temperature at 50 m depth	T	0.73	0.15
al	North Pacific Kuroshio current flow	MH	0.46	0.26
am	Japan Sea deep living fish (eggs)	MB	0.67	−0.03
an	Japan Sea tuna catch	MB	0.48	−0.07
ao	Germany lake algal spring bloom	TH	−0.43	−0.57
ap	Swiss groundwater temperature	T	0.87	0.19
aq	Swiss Lake Zürich temperature	T	0.68	0.23
ar	SH Annular Mode Index (SAM)	At	0.47	−0.14
Fig. 3				
a	Japan Kyoto cherry blossom	TB	−0.51	−0.17
b	Switzerland Liestal cherry blossom	TB	−0.61	−0.27
c	USA Washington D.C. cherry blossom	TB	−0.38	−0.18
Fig. 4				
a	Arctic Ocean	T	0.64	−0.08
b	North Pacific Ocean	T	0.80	−0.17
c	North America	T	0.78	−0.18
d	North Atlantic Ocean	T	0.88	−0.34
e	Europe	T	0.86	0.37
f	Asia	T	0.91	−0.04
g	South Pacific Ocean	T	0.80	−0.36
h	South America	T	0.37	−0.10
i	South Atlantic Ocean	T	0.66	−0.19
j	Africa	T	0.50	−0.60
k	North Indian Ocean	T	0.72	−0.43
l	Australia	T	0.87	−0.30
m	Southern Ocean	T	−0.24	−0.05

Table 1 (Continued)

			Eigenvector contribution		
			System	First	Second
n	South Indian Ocean	T	0.82	-0.31	
Fig. 5					
a	GHCN land GL	T	0.90	-0.11	
b	GHCN land NH	T	0.90	-0.11	
c	GHCN land SH	T	0.85	-0.25	
d	CRUTEM4 land GL	T	0.96	-0.19	
e	CRUTEM4 land NH	T	0.97	-0.15	
f	CRUTEM4 land SH	T	0.85	-0.36	
g	HadSST3 sea GL	T	0.92	-0.32	
h	HadSST3 sea NH	T	0.94	-0.26	
i	HadSST3 sea SH	T	0.86	-0.37	
j	HadCRUT4 land and sea GL	T	0.95	-0.27	
k	HadCRUT4 land and sea NH	T	0.97	-0.20	
l	HadCRUT4 land and sea SH	T	0.85	-0.37	

old regime is defined as the shift year, and all results shown are for $P \leq 0.05$. Our approach allows us to assess the strength of a regime shift by the number of test-period lengths with significant results, while Rodionov uses a regime shift index to weight his results.

Not all 20 test-period lengths can be applied to all the time series as the length of the time series, and the location of the shift year in the time series can sometimes make this impossible. For example, it would not be possible to apply the longest test-period length of 25 years to a short time series. For comparative purposes, we therefore determine the number of significant results as a percentage of the maximum possible, and set a minimum threshold of 20% to accept a significant shift year. This approach favours the detection of changes between long regimes and discards changes between short regimes, such as, for example, that in the NAO from 1989 to 1995, which lasted only 7 years (Fig. 2i).

Detection of a shift year depends very much on the test-period used. Extreme values in a time series can create a barrier for short test-periods and limit a shift year result to a small part of the whole time series. On the other hand, long test-periods may integrate these values to give significant shift years for longer periods. These observations emphasize the importance of varying the test-period length.

All acquired time series were analysed using the multiple STARS method. In some cases, because we used various test-period lengths, two adjacent regime shift years were identified. Possible reasons for this duplication, other than the distribution of the values in the time series, include the following: that the shift event takes time to evolve over more than 1 year; that some examples of shifts occur in the last months of 1 year and in the first months of the next; and that several different shift years occur in a large area that has been averaged over.

A comparison of real data with artificial time series. To demonstrate that the identification of regime shifts in our

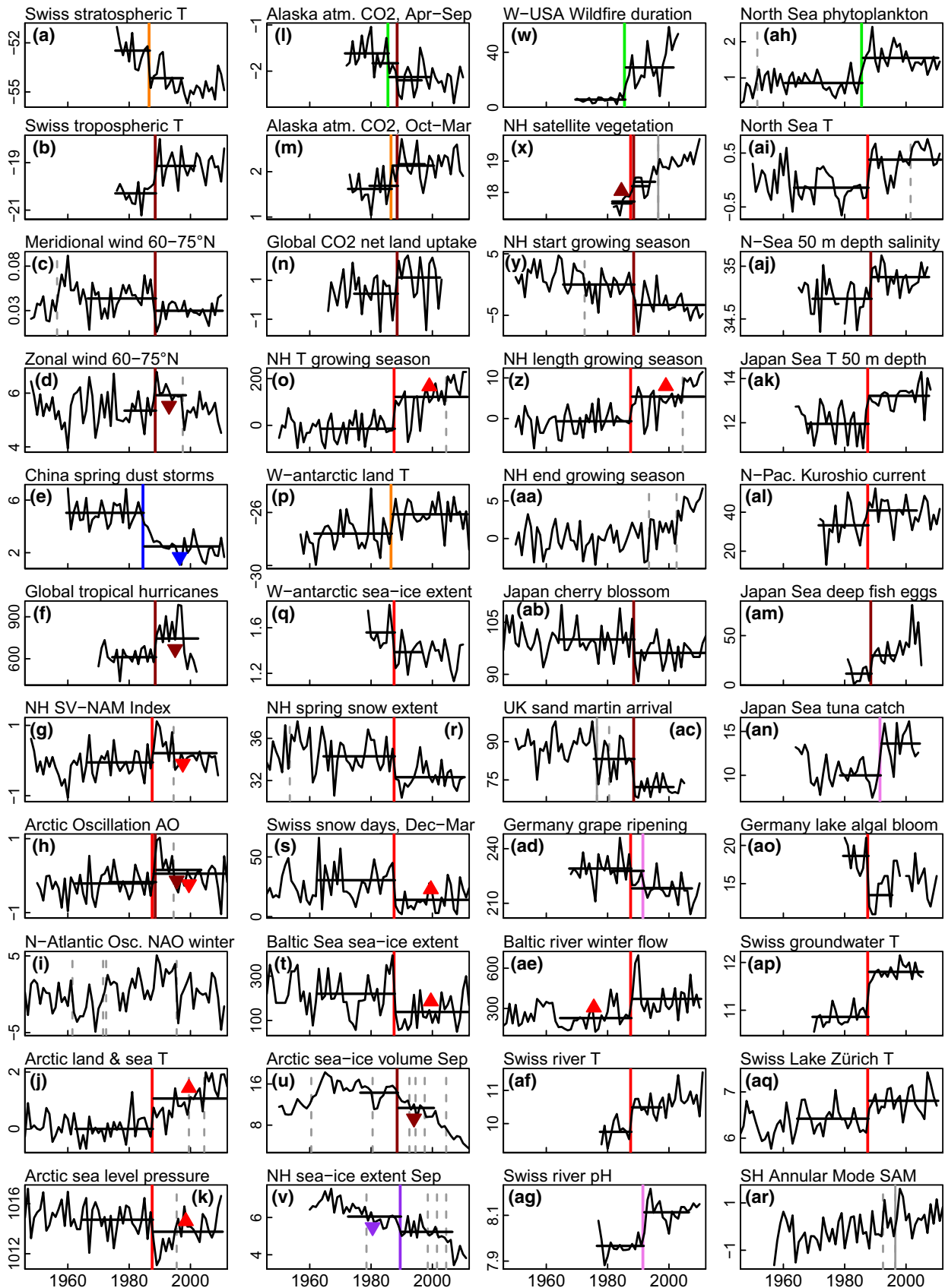


Fig. 2 Significant regime shifts in time series representing a range of different Earth systems. Vertical lines denote regime shift years ($P \leq 0.05$), coloured throughout the paper to reflect the '1980s period of interest' (1983–1990): 1984 (blue), 1985 (green), 1986 (orange), 1987 (red), 1988 (brown), 1989 (purple), 1991 (pink as a lagged effect); grey solid lines mark the earlier and later regime shifts (1976 and 1996), and grey dashed lines other significant shift years outside the 1980s. Horizontal lines mark the longest test-period with a significant result. Triangles (coloured as per the shift year) point up or down to indicate the direction of a significant trend before or after the shift year: here 3 before, 12 after the regime shift and 26 time series with a shift in the 'period of interest' but no trends. The plots are presented in the following sequence: atmosphere (a–p) and (ar), cryosphere (q–v), terrestrial biosphere (w–ad), hydrosphere (ae–aq). Further details for each of the time series are given in Tables 3 and S3 (origin, units and shift years).

analyses, based on the multiple STARS method, is not spurious, we compared the results obtained from the real time series with the results derived from two sets of artificial time series. The procedure used to create these autocorrelated time series is fully described in Beaugrand *et al.* (2014). First, we examined the 72 real time series with an autocorrelation function. The resulting autocorrelograms include information on the order of the correlation and the value for each lag, and showed a pronounced autocorrelation for some of our real time series (Fig. S1a). Second, the artificial time series were produced with two types of temporal autocorrelation, 'high' and 'medium', to approximate reality. For each type, 70 time series with 67 hypothetical years were simulated to correspond to the maximum period of the real time series (1946–2012, a total of 4690 years each). In the real data, some of the 72 time series extended over a shorter period (a total of 4104 years or 88% of the maximum possible).

The two types of autocorrelation were as follows: (1) High temporal autocorrelation, where 70 time series were constructed with a linear trend of magnitude 100 (arbitrary units) and random temporal fluctuations of magnitude 120 (green in Fig. S1b). These time series had an autocorrelation that corresponded to the maximum autocorrelation observed in the real time series (upper fine lines in Fig. S1a). (2) Medium temporal autocorrelation, where 70 time series were constructed with a linear trend of magnitude 100 (arbitrary units) and random temporal fluctuations of magnitude 45 (blue in Fig. S1b). These time series had an autocorrelation that corresponded to the medium autocorrelation in the observed time series (central fine lines in Fig. S1a). The thresholds of 45 and 120 were chosen to correspond to the two main situations (i.e. high and medium levels of autocorrelation) encountered in the time series. The total number of significant test-periods and shift years for the real and the two artificial time series sets are shown in Fig. S2.

A further comparison between the results for the real and artificial data sets shows the longest significant test-periods observed (Fig. S3a–c), where the triangular shape of the plots reflects the longest possible test-period length at the edges of the time series, from 6 years at the bottom to 25 years at the top. The strength of shift years in a specific calendar year is shown as a percentage of the number of significant test-periods against the total number of possible test-periods (Fig. S3d–f). In the middle of long time series the latter is 20 test-periods, but at the edges it is less. A cut-off of 20% was applied to eliminate the majority of only one or two significant test-periods, which are more likely to be artefacts.

Modelling

CMIP5 historical climate modelling. Global mean historical CMIP5 temperature data (Jones *et al.*, 2013) were used to attribute the changes in observed global temperature from the HadCRUT4.3.0.0 data set (Morice *et al.*, 2012). Two multimodel ensembles were selected, firstly with natural (solar and volcanic) forcings (with a total of 46 members), and secondly with both natural and anthropogenic forcings (99 members). The multimodel ensemble mean is taken to represent the best estimate of the response of global mean temperature to the forcings in each ensemble. The difference between the two ensemble means is used as an estimate of the effect of anthropogenic forcings on global mean temperature. Linear least-squares fitting was used to obtain running 7-year trends in the various global mean time series.

Statistical modelling. Estimates of the response of global mean temperature to solar and volcanic forcings individually were produced based on statistical reconstructions (Folland *et al.*, 2013). This latter study used a cross-validated multiple regression approach on data from 1891 to 2011 to estimate the effect of a range of known influences on global mean temperature. The sum of the solar and volcanic reconstructions was calculated to provide an equivalent to the ensemble mean temperature in the CMIP5 natural forcing ensemble. Calculation of anomalies and trends was performed using similar techniques to those used for the CMIP5 data.

Results

Identification of the 1980s regime shift in a wide range of Earth systems

Many statistical techniques exist to identify regime shifts (e.g. Beaugrand, 2004; Mantua, 2004; Rodionov & Overland, 2005; Rodionov, 2006; Beaulieu *et al.*, 2012a; Varotsos *et al.*, 2013). All have strengths and drawbacks, but the three we use here are complementary. To determine the main long-term patterns of variability, we applied a standardized principal component analysis (PCA) (Beaugrand *et al.*, 2002) to the data set as an entity. The results (Fig. 1, Table 1) showed a clear shift in 1987 for the first component, which accounts for almost half (49%) of the total variance. A large number of time series, especially of vari-

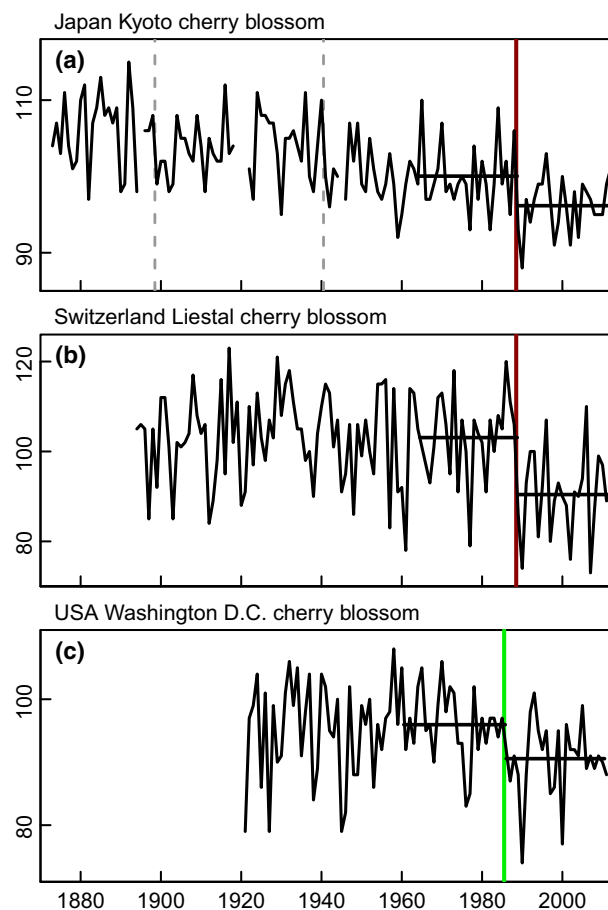


Fig. 3 Long-term time series of cherry blossom blooming dates from three different continents. Units: day of the year. Vertical lines denote significant regime shift years ($P \leq 0.05$), coloured for the '1980s period of interest' (1983–1990) throughout the paper, in this case: 1988 (brown) and 1985 (green); grey dashed lines mark other significant shift years outside the 1980s. Horizontal lines mark the longest test-period possible with a significant result. (a) The date on which the blossom of the Japanese cherry (*Prunus jamasakura*) comes into full bloom in Kyoto, Japan, 35°N, 136.67°E (1873–2012). Data: updated and revised from Yasuyuki Aono. Shift years: 1898, 1940, 1988. (b) The start date of the flowering of blossoms on a cherry tree (*Prunus avium*) at Liestal, Switzerland, 47.48°N, 7.44°E (1894–2012). The tree is checked with a telescope every day at the beginning of the flowering season; the date when 25% of the blossoms are open marks the start. Data: Andreas Buser, Landwirtschaftliches Zentrum Ebenrain, Sissach and MeteoSwiss, Switzerland. Shift year: 1988. (c) The peak bloom date of the blossoms on the Yoshino cherry trees (*Prunus x yedonensis*) in the tidal basin, Washington D.C., USA, 38.88°N, 77.04°W (1921–2011). Peak bloom date is defined as the day when 70% of the blossoms on the trees in the basin are open. Data: from <http://www.nps.gov/cherry/upload/Cherry-Festival-dates.pdf>. Shift year: 1985.

ables related to temperature and vegetation, are strongly correlated with the first component. The second component, which accounts for 12% of the total

variance, is correlated, for example, with the Arctic Oscillation, North Atlantic Oscillation, Arctic sea-level pressure and zonal wind. We applied Taylor's change-point analysis (Taylor, 2000) to identify step-wise shifts along the first principal component (Fig. 1a); the analysis detected a significant regime shift in 1987 ($P \leq 0.05$).

For standardization and a more detailed analysis of regime shifts in individual time series, the multiple version of the STARS method (Rodionov, 2004, 2006; Rodionov & Overland, 2005) described above (see Materials and methods) was employed. The well recognized and documented Rodionov method has now been used in several dozen papers (e.g. Luczak *et al.*, 2011; Jaffré *et al.*, 2013; Litzow & Mueter, 2014). Multiple STARS results for 44 time series representative of six natural systems (terrestrial and marine biospheres/hydrospheres, the atmosphere and cryosphere) are shown in Fig. 2, with more information on the time series given in Table 3 and Table S3. The multiple STARS method identifies a shift from a mostly stationary state to a new state, which in a third of cases contains a trend after the regime shift (Table 2). Note that our definition allows a significant linear trend within a regime.

The results of the multiple STARS method stress again the importance of the 1980s event compared to the smaller regime shifts in the 1970s and 1990s. The dominant 1980s regime shift also shows synchronous timing for systems and geographical regions. A total of 165 step changes were identified in the 72 time series over the analysis period from 1946 to 2012. Of these, 11% occurred in the late 1970s (1973–1980), 40% in the late 1980s (1983–1990) and 25% in the late 1990s (1993–2000). A comparison between the scale of the 1970s, 1980s and 1990s regime shifts can also be made by noting the maximum hemispheric step change in temperature shown by the GHCN LST time series with differences between the old and new regimes of 0.38 °C in 1976 (Southern Hemisphere), 0.80 °C in 1985 (Northern Hemisphere, Table 2) and 0.66 °C in 1997 (Northern Hemisphere).

Within the '1980s period of interest' (1983–1990), 66 step changes were found in 59 of the 72 time series (82%). In some of these, none were found, and in others more than one. Of the 66 detected shift years, very strong shifts (100% of the possible test-periods significant) were found in 27% and strong shifts ($\geq 50\%$ of the possible options) in 74%, the latter divided into 35% and 39% between temperature (for all air, sea and freshwater data sets) and a grouping of all other time series (36 each). Of the 44 time series presented in Fig. 2, 41 show a step-change in the mid-1980s, only two (Fig. 2v, ac) in the mid-1970s, and only 11 (Fig. 2d,

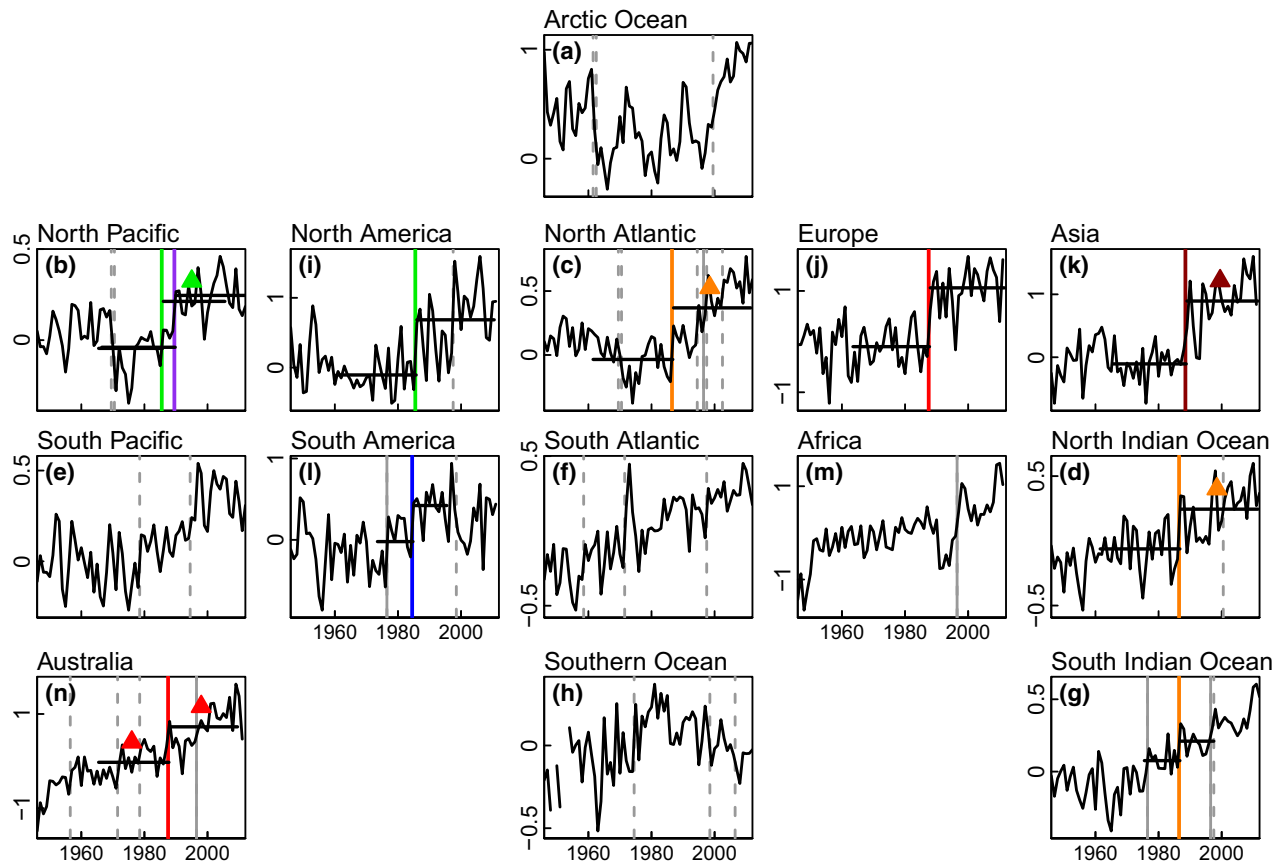


Fig. 4 Time series of annual mean land/sea surface temperature for six continents and eight ocean basins. Anomalies calculated with respect to their own mean over the period 1961–1990 (continents 1946–2011, oceans 1946–2012). Vertical and horizontal lines, symbols and colours as per the legend for Fig. 2. Data for land from <ftp://ftp.ncdc.noaa.gov/pub/data/ghcn/v3/>, processed by Eric Gobeirville. Units: °C. (c) North America, shift years: 1985, 1997; (e) Europe: 1987; (f) Asia: 1988; (h) South America: 1976, 1984, 1998; (j) Africa: 1996; (l) Australia: 1956, 1971, 1978, 1987, 1996. Data for the sea processed by Jonathan Barichivich from <http://www.metoffice.gov.uk/hadobs/hadsst3/data/download.html>. All grid boxes with data for a given region were selected, averaged, and weighted by the cosine of the latitude to account for the changing size of grid cells towards the poles. Units: °C. (a) Arctic Ocean, shift years: 1961, 1962, 1999; (b) North Pacific Ocean: 1969, 1970, 1985, 1989; (d) North Atlantic Ocean: 1969, 1970, 1986, 1994, 1996, 1997, 2002; (g) South Pacific Ocean: 1978, 1994; (i) South Atlantic Ocean: 1958, 1971, 1997; (k) North Indian Ocean: 1986, 2000; (m) Southern Ocean: 1974, 1998, 2006; (n) South Indian Ocean: 1976, 1986, 1996, 1997.

j, k, u, v, x, aa and all the indices Fig. 2g, h, i, ar) in the mid-1990s. The timing of the 1980s event in all natural systems ranges from 1984 to 1989, with most changes occurring in 1987 or 1988. Two examples are shown where the timing of the shift may reflect a lagged response (Swiss river pH and tuna catch in the Japan Sea, Fig. 2ag, an).

The change can be expressed as a percentage for 24 of the 72 time series (not for temperature, anomalies, indices, day of year or pH). In 19 of these 24 time series, the change between the two levels of the longest test-period with a result was $\geq 10\%$, in 7 $\geq 50\%$ and in 3 $\geq 100\%$. In one – wildfire duration in the western USA – there was an increase of $>400\%$. This means, from our calculations, that Western US wildfires lasted on average

29 days between 1986 and 2003 compared to 5.5 days between 1970 and 1985 (Table 2).

If the regimes (of n years length and for the longest test-period with a result) to either side of the shifts are considered, with the term ‘old’ applied to the period before and ‘new’ to that after the regime shift, there are few significant trends in the old regimes, but many more in the new, emphasizing the dynamic nature of the change after the 1980s. Significant trends in the old regimes before the shifts were only found in 11% of the 66 shifts in the ‘period of interest’ and in the new regimes after the shifts 41%, while 55% had no significant trends either before or after the shifts. Only three time series (Australia, Fig. 4l; GHCN land SH, HadSST3 sea SH, Fig. 5c,i) show trends in both old and new regimes, which

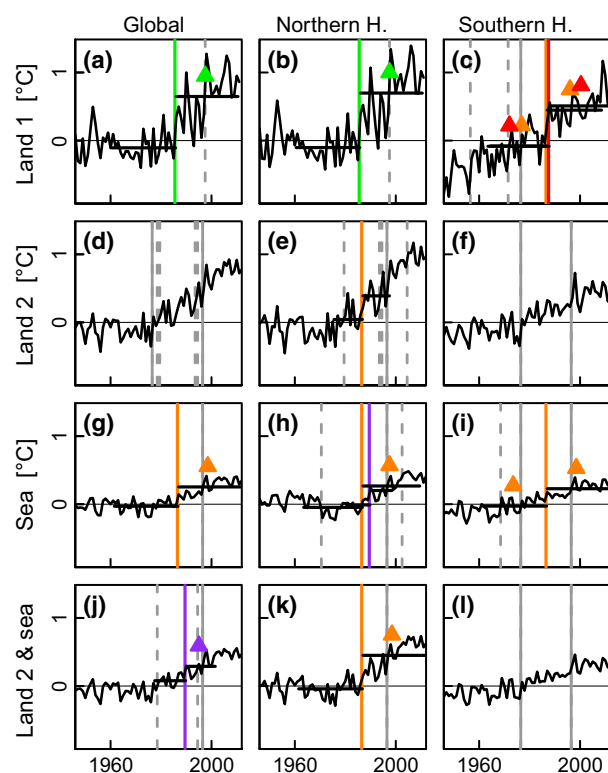


Fig. 5 Time series of annual mean global and hemispheric land and sea surface temperatures. Periods: 1946–2011/2012. (a–c) GHCN land surface temperature. (d–f) CRUTEM4.3.0.0 land surface temperature. (g–i) HadSST3.1.1.0 sea surface temperature. (j–l) HadCRUT4.3.0.0 combined land and sea surface temperature. Vertical and horizontal lines, symbols and colours as per the legend for Fig. 2. All data series are anomalized with respect to their own mean over the period 1961–1990. Data: (a–c) Station-based from <ftp://ftp.ncdc.noaa.gov/pub/data/ghcn/v3>. (d–l) 5° grid based from Hadley Centre, Met Office, UK <http://www.metoffice.gov.uk/hadobs/> or from Climatic Research Unit, University of East Anglia, UK <http://www.cru.uea.ac.uk/cru/data/>. Units: °C. Shift years: (a) 1985, 1997; (b) 1985, 1997; (c) 1956, 1971, 1976, 1986, 1987; (d) 1976, 1978, 1979, 1993, 1994, 1996; (e) 1979, 1986, 1993, 1994, 1996, 2004; (f) 1976, 1996; (g) 1986, 1996; (h) 1970, 1986, 1989, 1996, 2002; (i) 1968, 1976, 1986, 1996; (j) 1978, 1989, 1994, 1996; (k) 1986, 1996; (l) 1976, 1996.

means for these three out of 72 another method would be more appropriate.

To demonstrate that the identification of regime shifts determined by the multiple STARS method is not spurious and to address autocorrelation, we compared the results from the real data with those from two sets of artificial time series (Figs S1–S3). The sum of significant test-periods or shift years in the ‘1980s period of interest’ is much greater in the real time series than achieved by the two sets of artificial time series throughout the analysed time period and conclusively

confirms the reality of the 1980s regime shift and the validity of the multiple STARS method. In the real data, a total of 165 shift years were detected with 40% in the ‘period of interest’; in the data sets with high and medium autocorrelation, the number of shift years were 348 and 172, of which only 16% and 12%, respectively, occurred in the ‘period of interest’. We expected that the shift years would be evenly distributed over the analysed time period in the artificial time series and more concentrated in the real data, and this is clearly evident. The probability of detecting a spurious shift is thus likely to be the same in all of the time series. Both sets of the artificial time series have a symmetrical pattern to either side of the middle of the analysed time period (Fig. S3b, c, e, f), whereas the real data are strongly biased towards the second half of the time series and especially within the ‘period of interest’ (Fig. S3a, d). An edge effect is evident in all the plots, originating in the start and end phase of the time series where shift years cannot be detected.

A long-term context for the 1980s shift is provided by three centennial-scale time series of the flowering date of cherry trees in Japan, Switzerland and the USA (Fig. 3). The 1980s step changes at Liestal in 1988 and Washington in 1985 are the only significant shifts in these time series in at least 80 years. Flowering date calibrated against springtime air temperature showed that the earliest timing of the bloom and warmest period in over 1000 years in Kyoto (Aono & Kazui, 2008) followed the shift in 1988.

In continental averages of LST (Fig. 4c, e, f, h, j, l), the 1980s regime shift is evident for all continents except Africa, ranging from 1984 in South America to 1988 in Asia. However, for mean oceanic SST (Fig. 4a, b, d, g, i, k, m, n), the shift is only shown for the North Pacific in 1985, the North Atlantic in 1986 and the south and north basins of the Indian Ocean in 1986. For both LST and SST, the evidence for shifts in other decades is limited. Our analyses confirm earlier findings that SST has increased in steps over the last century (Reid & Beaugrand, 2012; Varotsos *et al.*, 2013) and that the pronounced upward trend in global combined land and sea temperatures seen in the decadal means of Figure SPM.1 in the IPCC Summary for Policy Makers (IPCC SPM, 2013; see also Fig. S4) started in the 1980s. Land and sea surface temperatures averaged over the entire globe and over the Northern and Southern Hemispheres separately (Fig. 5) record rapid increases as significant regime shifts centred on approximately 1976, 1986 and 1996. The relative increase in temperature is much greater over land than over the sea, and also larger over the Northern Hemisphere than over the Southern Hemisphere. The 1970s regime shift was first described for the North Pacific (Hare & Mantua, 2000),

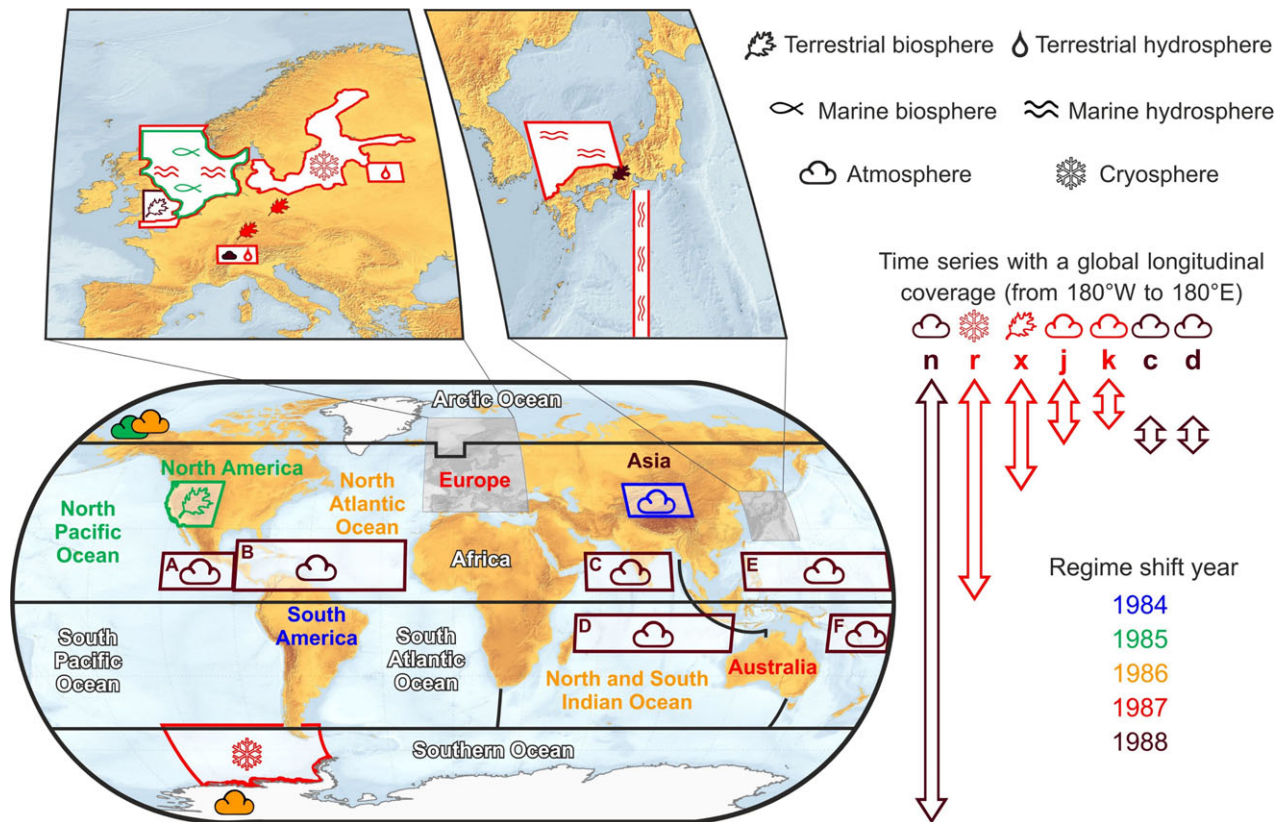


Fig. 6 Global map with magnified insets: locations of time series plotted in Figs 2 and 4. The latitudinal extent of data averaged on a global or zonal basis is shown as arrows on the right (the letters above the arrows refer to the time series in Fig. 2). The time series are grouped into six system categories (symbols, top right); the terrestrial biosphere group also includes one freshwater biological category (Fig. 2a). Individual sites are denoted by solid coloured symbols and regions by hollowed coloured symbols. The colours represent the regime shift year in each time series (see key, bottom right). White lettering with a black border (e.g. Africa) indicates time series with no significant regime shifts in the 1980s. The areas covered by the six regions averaged to produce 'Global' tropical storm days are labelled A to F (coordinates in Table S4). A list of the system allocation and shift years of each of the time series from Fig. 2 is given in Table S5; for oceans and continents see Fig. 4.

but in our results is evident only in the Southern Hemisphere. By contrast, the 1980s and 1990s regime shifts are seen in both hemispheres, although the 1980s event is stronger in the Northern Hemisphere.

The atmosphere underwent a major transformation around 1988 (Lo & Hsu, 2010; Xiao *et al.*, 2012), with changes in temperature, meridional and zonal wind patterns, and pressure (Fig. 2a–f, j, k, o, p). Changes in zonal winds, tropical storms and arctic sea level pressure during the 1980s regime shift (Fig. 2d, f, k) and a subsequent reversal, in part associated with the 1996 regime shift (Xiao *et al.*, 2012), reflect a pattern that can also be seen in the dominant general circulation modes in the Northern Hemisphere (Fig. 2g–i). However, the 1980s regime shift appears unique in that it does not show a relationship with El Niño (Yasunaka & Hanawa, 2003).

Many step changes in the 1980s are apparent in cryospheric records (Fig. 2q–v). In West Antarctica and

the Arctic, an approximately synchronous regime shift in sea-ice extent occurred in the 1980s, with modelled sea-ice volume in the Arctic declining linearly by 21% from 1989 to 2012 (Fig. 2u). In marine systems the 1980s regime shift is well documented (Möhlmann & Diekmann, 2012) (Fig. 2ah–an) and coincided with the Eastern Mediterranean Transient in 1987, which initiated profound hydrographic changes that appear to be unique in the last hundred years (Roether *et al.*, 2014).

Measured since 1982, satellite observations of vegetation greenness/plant biomass (Normalized Difference Vegetation Index, NDVI) reveal a step increase in plant growth in the Northern Hemisphere in 1987/88 (Fig. 2x). This index, derived from Advanced Very High Resolution Radiometer (AVHRR) satellite imagery, is a measure of the photosynthetically active radiation absorbed by chlorophyll in the leaves of plants. Other satellite- and ground-based observations of the start and length (Fig. 2y, z), but not the end (Fig. 2aa),

Table 2 Results of the multiple sequential *t*-test analyses of regime shifts (STARS) in Figs 2–5 for the ‘period of interest’ (1983–1990). Introductory information is listed in columns 1–5. This is followed by two sets of results in sequence (columns 6a–13a and 6b–13b) as some of the 72 time series have two shift years in the ‘period of interest’. Introductory text: (1) brief title; (2) temperature/system category (T temperature, At atmosphere, TB terrestrial biosphere, MB marine biosphere, CR cryosphere, TH terrestrial hydrosphere, MH marine hydrosphere); (3) whether the data are anomalies A or absolute values D; (4) the start year; and (5) the end year of the time series; (6a,b) the ‘shift year’ in bold to highlight the colours that are the same as in the legend for Fig. 2; (7a,b) the ‘longest test-period’ [years] which gives a significant result; (8a,b) the strength of the change as ‘% significant results’, bold because it is a measure of the strength of the shift (A percentage is used here as it is not possible to include all the 20 default test-periods in the calculation for short time series.); (9a,b) the ‘difference’ (in the units of each time series) as the size of the change between the means of the ‘longest test-period’ to either side of the shift; (10a,b) the difference between the two means as a ‘% change’ where possible (not for temperature, anomalies, indices, day of year, pH); (11a,b) the ‘*P*-value’ of the shift; (12a,b) the ‘trend old regime’ prior to the shift; and (13a,b) the ‘trend new regime’ over the ‘longest test-period’ after the shift

1	2	3	4	5	6a	7a	8a	9a	10a	11a	12a	13a	6b	7b	8b	9b	10b	11b	12b	13b
a	Swiss stratospheric temperature	T	D	1976	2011	1986	11	83	–1.7	–	0.0002	–	–	–	–	–	–	–	–	–
b	Swiss tropospheric temperature	T	D	1976	2011	1988	13	100	1.2	–	0.0000	–	–	–	–	–	–	–	–	–
c	Meridional wind speed	At	D	1948	2010	1988	22	76	–0.01	–32	0.0016	–	–	–	–	–	–	–	–	–
d	Zonal wind speed	At	D	1948	2010	1988	10	24	0.57	11	0.0225	–	–1.4	–	–	–	–	–	–	–
e	China spr. dust storm frequency	At	D	1960	2011	1984	25	80	–2.6	–51	0.0000	–	–1.7	–	–	–	–	–	–	–
f	Global tropical hurricane/storm	At	D	1970	2002	1988	14	100	133	2	0.0088	–	–289	–	–	–	–	–	–	–
g	NH seasonally varying Index	At	A	1948	2009	1987	21	88	0.26	–	0.0285	–	–0.73	–	–	–	–	–	–	–
h	Arctic Oscillation Index	At	A	1950	2012	1987	25	50	0.27	–	0.0256	–	–0.66	1988	15	47	0.33	–	0.0242	–0.87
i	North Atlantic Oscillation	At	A	1946	2011	–	–	–	–	–	–	–	–	–	–	–	–	–	–	–
j	Arctic temp. (SST and LST)	T	A	1946	2012	1987	25	80	1.07	–	0.0000	–	1.5	–	–	–	–	–	–	–
k	Arctic sea level pressure	At	D	1946	2010	1987	23	100	–0.95	–0.1	0.0160	–	3.0	–	–	–	–	–	–	–
l	Alaska atmosph. CO ₂ , Apr–Sep	CO ₂	D	1972	2010	1985	14	67	–0.51	–32	0.0003	–	–	1988	8	25	–0.37	–20	0.0457	–
m	Alaska atmosph. CO ₂ , Oct–Mar	CO ₂	D	1973	2010	1986	14	56	0.51	32	0.0002	–	–	1988	9	36	0.48	28	0.0173	–
n	Global CO ₂ net land uptake	CO ₂	D	1966	2003	1988	14	30	0.83	265	0.0429	–	–	–	–	–	–	–	–	–
o	NH temperature growing season	T	A	1950	2011	1987	24	84	136	–	0.0000	–	159	–	–	–	–	–	–	–
p	W. Antarctica temperature (LST)	T	D	1957	2012	1986	25	85	1.5	–	0.0000	–	–	–	–	–	–	–	–	–

Fig. 2

Table 2 (continued)

1	2	3	4	5	6a	7a	8a	9a	10a	11a	12a	13a	6b	7b	8b	9b	10b	11b	12b	13b
q	W. Antarctica sea-ice extent	CR	D	1979	2010	1987	9	100	-0.17	-11	0.0117	-	-	-	-	-	-	-	-	-
r	NH spring snow extent	CR	D	1946	2010	1987	23	100	-2.0	-5.8	0.0000	-	-	-	-	-	-	-	-	-
s	Swiss snow days, Dec-Mar	CR	D	1946	2012	1987	25	100	-16	-54	0.0000	15	-	-	-	-	-	-	-	-
t	Baltic Sea sea-ice extent	CR	D	1946	2012	1987	25	90	-82	-37	0.0005	108	-	-	-	-	-	-	-	-
u	Arctic sea-ice volume (Sep)	CR	D	1950	2012	1988	12	32	-3.0	-21	0.0001	-4.1	-	-	-	-	-	-	-	-
v	NH sea-ice extent (Sep)	CR	D	1960	2011	1989	17	24	-0.8	-14	0.0000	-0.96	-	-	-	-	-	-	-	-
w	Western USA wildfire duration	TB	D	1970	2003	1985	16	82	23	427	0.0000	-	-	-	-	-	-	-	-	-
x	NH satellite vegetation	TB	D	1982	2010	1987	6	100	0.01	3.1	0.0064	-	1988	7	50	0.01	3.6	0.0031	0.01	-
y	NH start thermal growing season	TB	A	1950	2011	1988	23	89	-3.3	-	0.0000	-	-	-	-	-	-	-	-	-
z	NH length thermal growing season	TB	A	1950	2011	1987	24	74	6.1	-	0.0000	8.4	-	-	-	-	-	-	-	-
aa	NH end thermal growing season	TB	A	1950	2011	-	-	-	-	-	-	-	-	-	-	-	-	-	-	-
ab	Japan Kyoto cherry blossom	TB	D	1946	2012	1988	24	47	-3.9	-	0.0018	-	-	-	-	-	-	-	-	-
ac	UK sand martin arrival	TB	D	1950	2005	1988	13	67	-11	-	0.0000	-	-	-	-	-	-	-	-	-
ad	Germany grape ripening date	TB	D	1968	2010	1987	20	67	-11	-	0.0000	-	1991	10	21	-9.4	-	0.0110	-	-
ae	Baltic river Daugava flow	TH	D	1946	2010	1987	23	72	143	62	0.0000	141	-	-	-	-	-	-	-	-
af	Swiss river temperature	T	D	1978	2011	1987	10	100	0.74	-	0.0000	-	-	-	-	-	-	-	-	-
ag	Swiss river pH	TH	D	1977	2010	1991	15	90	0.15	-	0.0000	-	-	-	-	-	-	-	-	-
ah	North Sea phytoplankton	MB	D	1946	2011	1985	25	100	0.69	80	0.0000	-	-	-	-	-	-	-	-	-
ai	North Sea temperature	T	A	1950	2011	1987	24	74	0.52	-	0.0000	-	-	-	-	-	-	-	-	-

Table 2 (continued)

1	2	3	4	5	6a	7a	8a	9a	10a	11a	12a	13a	6b	7b	8b	9b	10b	11b	12b	13b
aj	North Sea 50 m depth salinity	MH	D	1965	2007	1988	19	100	0.21	0.59	0.0002	—	—	—	—	—	—	—	—	—
ak	Japan Sea temperature at 50 m	T	D	1964	2008	1987	20	88	1.3	—	0.0000	—	—	—	—	—	—	—	—	—
al	N. Pacific Kuroshio current flow	MH	D	1972	2011	1987	16	64	7.6	23	0.0113	—	—	—	—	—	—	—	—	—
am	Japan Sea deep living fish (eggs)	MB	D	1981	2005	1988	8	100	18	158	0.0008	—	—	—	—	—	—	—	—	—
an	Japan Sea tuna catch	MB	D	1964	2004	1991	13	100	3.6	36	0.0000	—	—	—	—	—	—	—	—	—
ao	Germany lake algal spring bloom	TH	D	1980	2010	1987	8	100	−5.1	—	0.0003	—	—	—	—	—	—	—	—	—
ap	Swiss groundwater temperature	T	D	1970	2005	1987	18	100	0.94	—	0.0000	—	—	—	—	—	—	—	—	—
aq	Swiss Lake Zürich temperature	T	D	1946	2010	1987	23	89	0.39	—	0.0000	—	—	—	—	—	—	—	—	—
ar	SH Annular Mode Index (SAM)	At	A	1957	2012	—	—	—	—	—	—	—	—	—	—	—	—	—	—	—
Fig. 3					calculated starting from 1946															
a	Japan Kyoto cherry blossom	TB	D	1873	2012	1988	24	37	−3.9	—	0.0018	—	1988	24	47	−3.9	—	0.0018	—	—
b	Switzerland L, cherry blossom	TB	D	1894	2012	1988	24	89	−13	—	0.0000	—	1988	24	84	−13	—	0.0000	—	—
c	USA Wash. DC cherry blossom	TB	D	1921	2011	1985	25	20	−5.4	—	0.0018	—	1985	25	35	−5.4	—	0.0018	—	—
Fig. 4																				
a	Arctic Ocean	T	A	1946	2012	—	—	—	—	—	—	—	—	—	—	—	—	—	—	—
b	North Pacific Ocean	T	A	1946	2012	1985	20	60	0.26	—	0.0000	—	1989	23	28	0.28	—	0.0000	—	—
c	North America	T	A	1946	2011	1985	25	100	0.79	—	0.0000	—	—	—	—	—	—	—	—	—
d	North Atlantic Ocean	T	A	1946	2012	1986	25	85	0.40	—	0.0000	—	—	—	—	—	—	—	—	—
e	Europe	T	A	1946	2011	1987	24	100	1.2	—	0.0000	—	—	—	—	—	—	—	—	—

Table 2 (continued)

1	2	3	4	5	6a	7a	8a	9a	10a	11a	12a	13a	6b	7b	8b	9b	10b	11b	12b	13b
f	Asia	T	A	1946	2011	1988	23	94	1.0	—	0.0000	—	0.81	—	—	—	—	—	—	—
g	South Pacific Ocean	T	A	1946	2012	—	—	—	—	—	—	—	—	—	—	—	—	—	—	—
h	South America	T	A	1946	2011	1984	11	30	0.44	—	0.0007	—	—	—	—	—	—	—	—	—
i	South Atlantic Ocean	T	A	1946	2012	—	—	—	—	—	—	—	—	—	—	—	—	—	—	—
j	Africa	T	A	1946	2011	—	—	—	—	—	—	—	—	—	—	—	—	—	—	—
k	North Indian Ocean	T	A	1946	2012	1986	25	75	0.31	—	0.0000	—	0.33	—	—	—	—	—	—	—
l	Australia	T	A	1946	2011	1987	22	42	0.75	—	0.0000	0.58	1.0	—	—	—	—	—	—	—
m	Southern Ocean	T	A	1946	2012	—	—	—	—	—	—	—	—	—	—	—	—	—	—	—
n	South Indian Ocean	T	A	1946	2012	1986	11	30	0.13	—	0.0011	—	—	—	—	—	—	—	—	—
Fig. 5																				
a	GHCN land GL	T	A	1946	2011	1985	25	100	0.75	—	0.0000	—	0.72	—	—	—	—	—	—	—
b	GHCN land NH	T	A	1946	2011	1985	25	100	0.80	—	0.0000	—	0.82	—	—	—	—	—	—	—
c	GHCN land SH	T	A	1946	2011	1986	22	35	0.53	—	0.0000	0.42	0.28	1987	24	58	0.59	0.0000	0.55	0.46
d	CRUTEM4 land GL	T	A	1946	2012	—	—	—	—	—	—	—	—	—	—	—	—	—	—	—
e	CRUTEM4 land NH	T	A	1946	2012	1986	11	20	0.35	—	0.0009	—	—	—	—	—	—	—	—	—
f	CRUTEM4 land SH	T	A	1946	2012	—	—	—	—	—	—	—	—	—	—	—	—	—	—	—
g	HadSST3 sea GL	T	A	1946	2012	1986	25	100	0.28	—	0.0000	—	0.31	—	—	—	—	—	—	—
h	HadSST3 sea NH	T	A	1946	2012	1986	23	70	0.31	—	0.0000	—	0.43	1989	9	22	0.21	0.0006	—	—
i	HadSST3 sea SH	T	A	1946	2012	1986	25	50	0.26	—	0.0000	0.26	0.22	—	—	—	—	—	—	—
j	HadCRUT4 land+sea GL	T	A	1946	2012	1989	12	22	0.21	—	0.0001	—	0.24	—	—	—	—	—	—	—
k	HadCRUT4 land+sea NH	T	A	1946	2012	1986	25	95	0.49	—	0.0000	—	0.60	—	—	—	—	—	—	—
l	HadCRUT4 land+sea SH	T	A	1946	2012	—	—	—	—	—	—	—	—	—	—	—	—	—	—	—

of the vegetation growing season and the cumulative temperatures over this period (Fig. 2o) show that the increase in productivity has closely tracked the rate of warming in the northern extratropics (Barichivich *et al.*, 2013) and associated reductions in snow cover (Fig. 2r, s). This evidence is reinforced by additional extensive *in situ* measurements of changes in vegetation composition and biomass (Sturm *et al.*, 2001; Mann *et al.*, 2012; Brandt *et al.*, 2013) and by other synchronous changes in terrestrial and freshwater systems (Fig. 2ab–ag, ao–aq).

Annual emissions of CO₂ from fossil fuel and land use sources either accumulate in the atmosphere (atmospheric growth rate) or are removed from the atmosphere and absorbed by the land and oceans (sinks). The net land uptake is calculated from emission data, minus the atmospheric CO₂ growth rate and minus modelled ocean uptake. A rapid increase in photosynthetic activity in the late 1980s is consistent with the step decrease in summer atmospheric CO₂ concentration in northern latitudes and the simultaneous increase in winter atmospheric CO₂ (Fig. 2l, m) (Barichivich *et al.*, 2013), the latter a likely consequence of increased ecosystem respiration (Barichivich *et al.*, 2012). This linkage is confirmed by carbon cycle observations and models (Sarmiento *et al.*, 2010) that show a sudden increase of ~1 Pg C yr⁻¹ in net uptake by the land around 1988 (Fig. 2n). The regime shift coincided with a sudden decline in the annual growth rate of atmospheric CO₂ (Beaulieu *et al.*, 2012b). This large increase in the net land carbon sink is evident in the global carbon budget despite increased carbon emissions from anthropogenic sources and from greater fire activity (Fig. 2w).

The PCA and the change-point analysis results suggest that the main shift took place in 1987. The 72 individual time series show shifts within the 'period of interest' in the proportions 1983 (0), 1984 (2), 1985 (8), 1986 (12), 1987 (23), 1988 (17), 1989 (4), 1990 (0) = 66, with three shifts in 1991 that are likely to be lagged effects. Regionally, the results are generally closely grouped and show a degree of consistency with regard to the year of their occurrence. For example, in North America: wildfires, atmospheric summer CO₂ concentration, the Washington Cherry and the mean LST all showed a shift in 1985; and in Europe eight time series from the cryosphere, fresh water and vegetation systems all showed a shift in 1987, with a shift in a ninth series, the UK sand martin arrival in 1988. These regional differences are mapped in Fig. 6 by ocean and continent for SST and LST (Fig. 4) with superimposed shift years for some of the time series plotted in Fig. 2. With the exception of dust storms in Asia (Fig. 2e), the signal seems to have started in the early 1980s in South America (1984), spreading to the North Pacific and

North America (1985), to the North Atlantic Ocean (1986) and Europe (1987), and then on to Asia (1988), with a possible, weaker, second signal in the North Pacific in 1989 (see Fig. 4b and Table 2). In the Southern Hemisphere, it seems to have extended eastwards to the Indian Ocean (1986) and to Australia (1987).

Using CMIP5 and statistical modelling to examine mechanisms

The global scale of the 1980s shift documented here suggests that a fundamental shift in the climate system took place at this time. It is clear that rapidly increasing temperature is central to the shifts, with rising concentrations of greenhouse gases contributing to a net warming of global climate since the late 1970s (Figure SPM 1, in IPCC SPM, 2013). Temperature is also important for the carbon cycle as well as *vice versa*, as reflected in the correlated changes in global combined land and sea surface temperature and the atmospheric growth rate of CO₂ over the last ~50 years (Fig. 7).

Over the period 1975 to 1995, the anthropogenic warming from CMIP5 simulations of 0.19 °C per decade is close to the observed warming rate of 0.16 °C per decade (Fig. 8a). With a relatively steady trend (Fig. 8b), however, it does not explain the abrupt and substantial temperature shift in the 1980s. Natural forcing, in contrast, induced a marked peak in short-term warming of 0.34 °C per decade in 1986 (in the 7-year

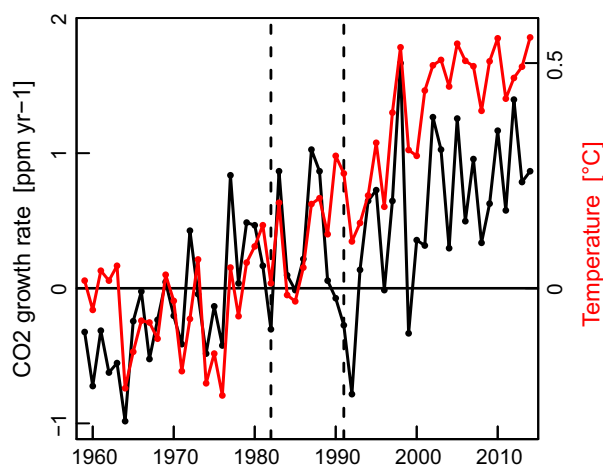


Fig. 7 Annual temporal development of CO₂ growth rate and global temperature. Correlation: ($r^2 = 57\%$, $P < 10^{-10}$). Period: 1959–2014. Mauna Loa CO₂ annual growth rate (black) plotted against HadCRUT4.3.0.0 annual global combined land and sea surface temperature (red), both as anomalies to 1961–1990. Mauna Loa data from: ftp://aftp.cmdl.noaa.gov/products/trends/co2/co2_gr_mlo.txt and Hadley data from: <http://www.metoffice.gov.uk/hadobs/hadcrut4/data/current/download.html>.

trend belonging to the period 1983 to 1989, Fig. 8b), temporarily exceeding the anthropogenic warming rate. Therefore, anthropogenic and natural forcing factors combined in the mid-1980s to produce a sudden acceleration in global warming.

Statistical modelling of historical temperatures (Folland *et al.*, 2013) indicates that this large natural forcing has a volcanic origin rather than being linked to solar radiation, the other possible natural forcing factor (Fig. 8c,d). In the 'period of interest', the statistically derived natural forcing has a similar pattern to that from the CMIP5 model simulations but is somewhat smaller in amplitude (Fig. 8b,d).

The major volcanic eruption of El Chichón in 1982 was responsible for an estimated cooling of 0.2–0.3 °C per decade, offsetting anthropogenic warming and resulting in relatively small global mean temperature trends in the early 1980s. By the mid-1980s to late 1980s, however, recovery from the climatic impacts of

the eruption, including a reduction in stratospheric aerosol concentrations, led to a natural warming, reinforcing anthropogenic warming and producing a rapid increase in global mean temperature on a higher level than before the eruption (Fig. 7). As a result, the global climate shifted to a warmer state in just a few years, setting in motion a cascade of responses in natural systems.

Discussion

Based on evidence from a wide range of Earth system components, we show that a global and approximately synchronous shift occurred in the 1980s that is strongly evident in global, hemispheric and some local temperatures. Since the regime shift, decadal temperatures have shown a steep increase compared to the previous period of little change and an earlier smaller rise from 1920 to 1950 (Fig. S4).

Temperature appears to be the main forcing factor behind the shift: it is fundamental to most chemical, physical and biological processes. Independent of our study, there is substantial evidence that changes in the heat structure of the world are profoundly affecting regional climate variability, the cryosphere, terrestrial systems, sea level, ocean hydrodynamics and the biogeochemistry, ecosystems and living resources of the world. In a biological context, temperature modulates all processes, including the physiology, reproduction, development, occurrence, behaviour, disease and phenology of organisms, at cellular to ecosystem scales. The changes in temperature show great similarity across the world; this commonality provides a plausible explanation for the synchrony of the changes we observed. The abrupt increase in temperature during the regime shift may have initiated the intensification of environmental impacts, for example storms, floods, forest fires and the spread of pests seen over the last few decades.

The increase in temperature of the 1980s has also been linked to diverse biological changes on tropical mountains of the New World. In a Costa Rican cloud forest, declines of amphibian and reptile populations and shifts in the altitudinal distribution of birds are associated with a decrease in mist frequency and other local climatic changes that appear to have crossed an important biological threshold in 1987 (Pounds *et al.*, 1999). Extinction of harlequin frog species across Central and South America, which, along with the disappearance of the golden toad from Costa Rica, have been associated with disease outbreaks and were the first species-level extinctions in which global warming was implicated, accelerated in the mid-1980s (Pounds *et al.*, 2006).

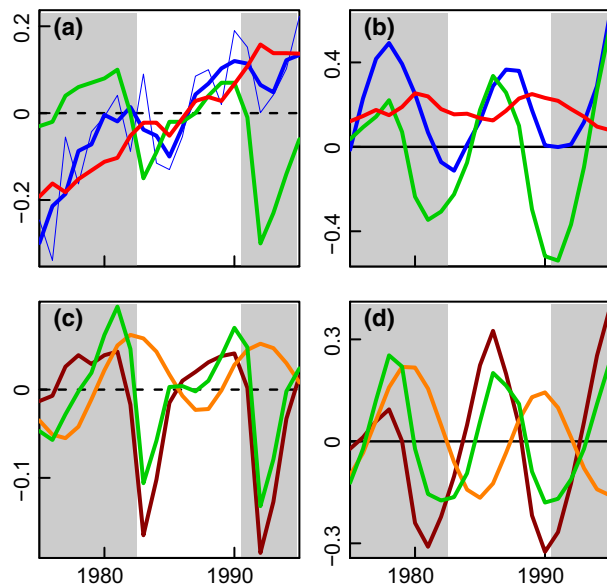


Fig. 8 Attribution of the global mean temperature shift in the 1980s. The 'period of interest' (1983–1990) is highlighted in white. (a) Observed annual global mean temperature [°C] (blue line) with its centred running 3-year means (blue bold), and the response [°C] to anthropogenic (red) and natural (green) forcings from CMIP5 climate model simulations. (b) Centred running 7-year trends [°C per decade] corresponding to the variables in (a). (c) Statistical reconstructions of the impact of solar (orange) and volcanic (brown) forcings on global mean temperature, plus their total (green). (d) Centred running 7-year trends [°C per decade] corresponding to the variables in (c). All data series are anomalies with respect to their own mean over the period 1985–1988. In reading the figure, note that the RUNNING means as well as the RUNNING trends begin per definition to rise/decline before the El Chichón eruption starts.

Table 3 Summary details of the time series presented in Fig. 2. Additional information in Table S3

a-b	°C	Stratospheric air temperature measured by radiosondes launched at Payerne, Switzerland. (a) at 20 hPa (~26 km above sea level), (b) at 500 hPa (~5 km above sea level)
c	m s ⁻¹	Meridional wind speed at 500 hPa
d	m s ⁻¹	Zonal wind speed at 500 hPa
e	No. of days yr ⁻¹	Number of spring (March - May) dust storms per year, averaged for 48 observing stations in northwest China
f	No. of days yr ⁻¹	Number of tropical cyclone storm days per year (hurricanes plus tropical storms)
g	-	Seasonally varying Northern Hemisphere annular mode (SV-NAM) index
h	-	Arctic Oscillation (AO) index: the dominant pattern of winter (Nov-Apr) sea level pressure variation north of 20°N
i	-	North Atlantic Oscillation (NAO, December - March) index: a basin-scale alternation of atmospheric mass over the North Atlantic between high pressure in the subtropical Atlantic and low pressure around Iceland
j	°C	Combined land-surface air temperature and sea-surface water temperature for the zonal band >64°N. Anomalies relative to 1951–1980
k	hPa	Sea-level pressure from the 20th Century Reanalysis version 2 data averaged over the Arctic
l-m	ppm	Interannually detrended atmospheric CO ₂ concentration at Point Barrow, Alaska: (l) during the warm (April - September), and (m) during the cold (October - March) seasons
n	Pg C yr ⁻¹	Global net CO ₂ land uptake
o	°C	Time-integrated air temperature over the thermal growing season for the extratropical (>35°N) Northern Hemisphere. Thermal growing season if temperature >5 °C
p	°C	A reconstructed time series of air surface temperature for the Byrd meteorological station in Western Antarctica
q	10 ⁶ km ²	Sea-ice extent in the Bellingshausen/Amundsen Seas, Western Antarctica
r	10 ⁶ km ²	Northern Hemisphere spring (March–April) snow extent
s	Snow days	Number of snow days on the north side of the Swiss Alps between December and March
t	10 ⁶ km ²	Maximum sea-ice extent in the Baltic Sea and Kattegat
u	10 ³ km ³	Modelled total sea-ice volume in September for the Arctic Ocean
v	10 ³ km ²	Northern Hemisphere (September) sea-ice extent
w	No. of days	Mean number of burning days per wildfire event in forests of the western USA
x	–	Normalized Difference Vegetation Index (NDVI) averaged for the growing season in northern latitudes (>35°N)
y-aa	Day of the year/days	Thermal growing season (temperature >5 °C) for the extratropical (>35°N) Northern Hemisphere, (y) start (day of the year), (z) length (days), (aa) end (day of the year)
ab	Day of the year	The flowering date on which the Japanese cherry, <i>Prunus jamasakura</i> , comes into full bloom in Kyoto, Japan. A plot of the time series starting in 1873 is shown in Fig. 3
ac	Day of the year	Mean first arrival dates of the sand martin, <i>Riparia riparia</i> , averaged for eight locations in the UK
ad	Day of the year	Véraison (colour change and initial maturation) of Müller-Thurgau grapes harvested from vineyards in Franconia, Germany
ae	m ³ s ⁻¹	Winter flow (December–February) in the >1000 km long River Daugava measured at the Daugavpils hydrological station in Latvia
af	°C	River water temperature averaged for 18 hydrological stations that are representative of >80% of the river outflow from Switzerland
ag	–	River water pH averaged for 6 hydrological stations that are representative of >80% of the river outflow from Switzerland
ah	Colour categories	Phytoplankton biomass: a visual estimate of chlorophyll sampled at ~10 m depth by the Continuous Plankton Recorder and averaged for the North Sea
ai	°C	Temperature of the North Sea averaged for the full depth within grid cells with centres enclosed by 50°N–61°N and 3°W–9°E, anomalies relative to 1971–2000
aj	–	Mean salinity at 50 m depth at the deepest station on the Torungen–Hirtshals hydrographic section between Norway and Denmark in the North Sea, Skagerrak
ak	°C	Sea temperature at 50 m depth based on monthly measurements taken in the Japan Sea
al	10 ⁶ m ³ s ⁻¹	Mean summer (July–September) volume transport of the Kuroshio Current in the Western North Pacific

Table 3 (continued)

am	No. of eggs m ⁻²	Egg abundance per m ² of the deep water (mesopelagic) fish <i>Maurolicus japonicus</i> sampled by regular ichthyoplankton net surveys in May in the eastern Japan Sea. The eggs are found below 100 m and are used as an index of the biomass of the adult population
an	10 ³ tons	Tuna catch in Japanese waters of the Japan Sea
ao	Calendar week	Timing of the spring algal bloom in Lake Müggelsee, Berlin, Germany
ap	°C	Mean groundwater temperature of two Swiss aquifers fed by riverbank filtration
aq	°C	Volume-weighted mean temperature of Lower Lake Zurich, Switzerland
ar	–	The Southern Annular Mode (SAM) index is a zonal feature that reflects the main variability of atmospheric circulation in the Southern Hemisphere extratropics and high latitudes

The numerous individual processes behind sudden changes (regime shifts) in a temporal context as defined in this study are still poorly understood and to our knowledge have not been replicated in climate models (Lo & Hsu, 2010). However, analyses using CMIP5 model scenarios and patterns of global temperature and precipitation have been carried out and estimate that pronounced geographical changes will occur in climate regimes and vegetation types by 2100 (Feng *et al.*, 2014). This study of vegetation types confirms the key role of temperature, highlights the regional importance of precipitation and emphasizes the large size and potential impact of future change (a ~31 to 46% increase in warmer and drier climate types by 2070–2100 based on RCP4.5 and RCP8.5 scenarios).

The long and precipitous decline in the CO₂ growth rate in the period after 1988 (Keeling *et al.*, 1995; Fig. 7), despite higher temperatures in 1989/90, coincides with the step increase in the terrestrial carbon sink (Fig. 2n). This decline in the CO₂ growth rate and the net increase in the terrestrial sink from 1988 started well before the Pinatubo eruption in 1991. The sink was mostly in northern temperate boreal regions, as increases in the tropics were counterbalanced by deforestation and changes in land use (Sarmiento *et al.*, 2010). Likely reasons for the enhanced biospheric carbon sequestration after the regime shift are increased photosynthesis from CO₂ fertilization, an earlier and longer thermal growing season in the Northern Hemisphere (Fig. 2o, y, z), expansion of forests (IPCC Chap. 6, 2013) and the increase in surface solar radiation known as global brightening (Wild, 2009). To quantify approximately

the change in the carbon cycle, decadal means from table 4 of Le Quéré *et al.* (2013) were used to calculate averages for the periods 1960 to 1989 and 1990 to 2009 of three variables: total anthropogenic emissions, atmospheric growth rate and carbon uptake by the combined land and ocean sinks (Table 4). The rate of carbon uptake by the combined land and ocean sinks (carbon storage) increased between these periods by ~1.65 Pg C yr⁻¹, a 52% increase over the earlier period. To place this regime shift in carbon storage in context, it is close to double the rise in atmospheric growth rate of CO₂ (0.92 Pg C yr⁻¹) and equals 64% of the increase in total anthropogenic emissions between the same periods (2.57 Pg C yr⁻¹) (Le Quéré *et al.*, 2013). If a sink of this magnitude reversed to a CO₂ source, it would markedly accelerate the rise in atmospheric CO₂ growth rate and temperature.

The mechanisms behind the apparent easterly movement seen in the timing of the 1980s regime and possible interhemispheric transfer of the year of the shift (e.g. South to North America) around the world are not understood. The pattern is best seen in the Northern Hemisphere where it in part alternates between land and ocean, starting in the Pacific in 1985 to Asia in 1988 (Fig. 4), reflecting the dominant flow of mid-latitude winds and possibly the progressive movement of waves along the eastward flowing polar and subtropical jet streams.

What is the trigger that initiated the sudden increase in temperature from the 1980s until 2010 (Fig. S4)? Did the Earth's climate jump to a new 'equilibrium' state due to its sensitivity to past radiation forcing (Hansen

Table 4 Change in CO₂-sink after the 1980s regime shift. Based on data from table 4 in (Le Quéré *et al.* (2013)

	1960–1989 Pg C yr ⁻¹	1990–2009 Pg C yr ⁻¹	Difference Pg C yr ⁻¹	Difference %
Sum CO ₂ emissions*	5.83	8.40	2.57	
Atmospheric CO ₂ growth rate	2.63	3.55	0.92	
Sum CO ₂ ocean and land sinks	3.20	4.85	1.65	52%

*Fossil fuel emissions + cement production + land-use change. Text in red to emphasize the scale of the change.

et al., 1984), or did its systems cross a threshold (Barnosky *et al.*, 2012) possibly linked to the rise in the concentration of atmospheric CO₂? Our results based on CMIP5 and statistical modelling indicate that a combination of warming from natural and anthropogenic forcing was responsible as a rebound from the cooling that followed the El Chichón eruption together with a reduction in stratospheric aerosols, although the relative contribution of each forcing factor is still unclear. While the present generation of climate models can reproduce the general features of global temperature change and the cooling that follows major volcanic eruptions (IPCC Chap. 9, 2013), up to now they have not been able to replicate observed regime shifts (Lo & Hsu, 2010) or simulate the dynamic response to external forcings that includes the effects of volcanism (Driscoll *et al.*, 2012).

If the above-combined anthropogenic and natural forcing thesis is correct, why was there no equivalent regime change after the larger Pinatubo eruption? Changes in direct and diffuse radiation as measured at Mauna Loa (Robock, 2000) were much greater for El Chichón in 1982 than for the eruption of Mount Pinatubo almost a decade later (Fig. S5). The recovery from El Chichón was also more rapid, and the aerosol plume initially covered a greater area than for the following Pinatubo eruption (to 30°N compared to 15°N) (Robock, 2000), which favours a stronger shift impulse from the former. This fits with measurements that show that much of the aerosol plume from Pinatubo moved rapidly to the south of the equator after the eruption whereas most of the El Chichón plume remained in the Northern Hemisphere (McCormick *et al.*, 1995). The seasonal timing of the eruptions (figure 7 in Post *et al.*, 1996) and differences in stratospheric wind direction and strength, linked to the quasi-biennial oscillation (McCormick *et al.*, 1995), have also contributed.

A reversal in trend from global dimming to global brightening, with stronger surface solar radiation from the late 1980s, preceded and possibly masked some of the effects of the Pinatubo eruption. The enhanced radiation has been attributed to a substantial reduction in anthropogenic sulphur aerosols (Wild, 2009) that occurred at this time (Stern, 2006). Parallel and likely associated changes occurred in precipitation, reflecting a more active global hydrological cycle (Wild, 2009).

In the last decade, there has been an increasing debate on the possible need to deliberately geoengineer the climate to compensate for greenhouse gas induced global warming by either removing CO₂ from the atmosphere or by reducing solar irradiance (Shepherd *et al.*, 2009). Our results have considerable relevance to this debate. The speed, scale and global

extent of the changes that took place in the 1980s have not been recognized until now, and therefore could not have been taken into account by geoengineering proposals. Current understanding that major volcanic eruptions only cause short-term cooling of the Earth (Cole-Dai, 2010) is contradicted by our demonstration of a longer-term warming effect that involves the interaction of major volcanism with global warming. The cascading effects of the 1980s regime shift emphasize the vulnerability of the Earth to large scale human climate intervention.

The importance of the 1980s regime shift is shown here to have been unparalleled within at least the last century. It has been little recognized in the past due to a paucity of long-term time series that are maintained and sampled in the same consistent way over decades, and a compartmentalization of science with insufficient communication between different disciplines. Many factors related to atmospheric and oceanic circulation, volcanism, latent and sensible heat transport, cloudiness, aerosol effects, and shortwave and long-wave radiation are likely to have been involved. Given the scale and global extent of the shift, the public, policy makers and the scientific community need to be made more aware of the importance of such events. We need to improve our ability to forecast and model the occurrence, magnitude and consequences of regime shifts and include their effects in risk assessments for proposed geoengineering approaches to modify the climate. The enormous impact of the regime shift is seen especially in the land and ocean carbon sinks; a key issue for humanity is how these ecosystem services will behave in the future. The wide range of changes associated with the 1980s regime shift supports a threshold thesis that moved the whole global system into a new, rapidly warming state, with compounding consequences.

Acknowledgements

We wish to thank all who contributed the time series data used in the figures (See Table S3) and others for assistance or for data not presented here, including Stephan Bader and Regula Gehrig Bichsel, MeteoSwiss, Zurich, Switzerland; Adrian Jakob, Edith Oosenbrug and Michèle Oberhänsli, BAFU Hydrology, Switzerland; and Reto Ruedy, NASA Goddard Institute for Space Studies, New York, USA. PG acknowledges support from Grant 14.B25.31.0026 of the Russian Ministry of Education and Science. We are grateful to Eawag and its Department of Systems Analysis, Integrated Assessment and Modelling for hosting a workshop in Zurich, Switzerland.

References

- Aono Y, Kazui K (2008) Phenological data series of cherry tree flowering in Kyoto, Japan, and its application to reconstruction of springtime temperatures since the 9th century. *International Journal of Climatology*, **28**, 905–914.

- Barichivich J, Briffa KR, Osborn TJ, Melvin TM, Caesar J (2012) Thermal growing season and timing of biospheric carbon uptake across the Northern Hemisphere. *Global Biogeochemical Cycles*, **26**, GB4015.
- Barichivich J, Briffa KR, Myneni R *et al.* (2013) Large-scale variations in the vegetation growing season and annual cycle of atmospheric CO₂ at high northern latitudes from 1950 to 2011. *Global Change Biology*, **19**, 3167–3183.
- Barnosky AD, Hadly EA, Bascompte J *et al.* (2012) Approaching a state shift in Earth's biosphere. *Nature*, **486**, 52–58.
- Beaugrand G (2004) The North Sea regime shift: evidence, causes, mechanisms and consequences. *Progress in Oceanography*, **60**, 245–262.
- Beaugrand G, Reid PC, Ibañez F, Lindley JA, Edwards M (2002) Reorganisation of North Atlantic marine copepod biodiversity and climate. *Science*, **296**, 1692–1694.
- Beaugrand G, McQuatters-Gollop A, Edwards M, Goberville E (2013) Long-term responses of North Atlantic calcifying plankton to climate change. *Nature Climate Change*, **3**, 263–267.
- Beaugrand G, Harley X, Edward M (2014) Detecting plankton shifts in the North Sea: a new abrupt ecosystem shift between 1996 and 2003. *Marine Ecology Progress Series*, **502**, 85–104.
- Beaugrand G, Conversi A, Chiba S *et al.* (2015) Synchronous marine pelagic regime shifts in the Northern Hemisphere. *Philosophical Transactions of the Royal Society of London, Series B: Biological Sciences*, **370**, 20130272.
- Beaulieu C, Chen J, Sarmiento JL (2012a) Change-point analysis as a tool to detect abrupt climate variations. *Philosophical Transactions of the Royal Society A: Mathematical, Physical and Engineering Sciences*, **370**, 1228–1249.
- Beaulieu C, Sarmiento JL, Mikaloff Fletcher SE, Chen J, Medvigy D (2012b) Identification and characterization of abrupt changes in the land uptake of carbon. *Global Biogeochemical Cycles*, **26**, GB1007.
- Brandt JS, Haynes MA, Kuemmerle T, Waller DM, Radeloff VC (2013) Regime shift on the roof of the world: alpine meadows converting to shrublands in the southern Himalayas. *Biological Conservation*, **158**, 116–127.
- Brown RD, Robinson DA (2011) Northern Hemisphere spring snow cover variability and change over 1922–2010 including an assessment of uncertainty. *The Cryosphere*, **5**, 219–229.
- Campbell JL, Allen MP (2001) Identifying shifts in policy regimes: cluster and interrupted time-series analyses of U.S. income taxes. *Social Science History*, **25**, 187–216.
- Church JA, White NJ, Arblaster JM (2005) Significant decadal-scale impact of volcanic eruptions on sea level and ocean heat content. *Nature*, **438**, 74–77.
- Cole-Dai J (2010) Volcanoes and climate. *Wiley Interdisciplinary Reviews: Climate Change*, **1**, 824–839.
- Driscoll S, Bozzo A, Gray LJ, Robock A, Stenchikov G (2012) Coupled Model Inter-comparison Project 5 (CMIP5) simulations of climate following volcanic eruptions. *Journal of Geophysical Research: Atmospheres*, **117**, D17105.
- Feng S, Hu Q, Huang W, Ho C-H, Li R, Tang Z (2014) Projected climate regime shift under future global warming from multi-model, multi-scenario CMIP5 simulations. *Global and Planetary Change*, **112**, 41–52.
- Folland CK, Colman AW, Smith DM, Boucher O, Parker DE, Vernier J-P (2013) High predictive skill of global surface temperature a year ahead. *Geophysical Research Letters*, **40**, 761–767.
- Fujino T, Goto T, Shimura T *et al.* (2013) Decadal variation in egg abundance of a mesopelagic fish, *Maurollicus japonicus*, in the Japan Sea during 1981–2005. *Journal of Marine Science and Technology*, **21**, 58–62.
- Gong D-Y, Ho C-H (2002) Shift in the summer rainfall over the Yangtze River valley in the late 1970s. *Geophysical Research Letters*, **29**, 78–1–78–4.
- Hansen J, Lacis A, Rind D *et al.* (1984) Climate sensitivity: analysis of feedback mechanisms. *Geophysical Monograph*, **29**, 130–163.
- Hare SR, Mantua NJ (2000) Empirical evidence for North Pacific regime shifts in 1977 and 1989. *Progress in Oceanography*, **47**, 103–145.
- Hari RE, Livingstone DM, Siber R, Burkhardt-Holm P, Güttinger H (2006) Consequences of climatic change for water temperature and brown trout populations in Alpine rivers and streams. *Global Change Biology*, **12**, 10–26.
- Hastings A, Wysham DB (2010) Regime shifts in ecological systems can occur with no warning. *Ecology Letters*, **13**, 464–472.
- Ibañez F, Fromentin JM, Castel J (1993) Application de la méthode des sommes cumulées à l'analyse des séries chronologiques en océanographie. *Comptes Rendus de l'Académie des Sciences de Paris, Sciences de la Vie*, **316**, 745–748.
- IPCC Chap. 6, Ciais P, Sabine C *et al.* (2013) Carbon and other biogeochemical cycles. In: *Climate Change 2013: The Physical Science Basis. Contribution of Working Group I to the Fifth Assessment Report of the Intergovernmental Panel on Climate Change* (eds Stocker TF, Qin D, Plattner G-K *et al.*), pp. 465–570. Cambridge University Press, Cambridge, UK and New York, NY, USA.
- IPCC Chap. 7, Boucher O, Randall D *et al.* (2013) Clouds and aerosols. In: *Climate Change 2013: The Physical Science Basis. Contribution of Working Group I to the Fifth Assessment Report of the Intergovernmental Panel on Climate Change* (eds Stocker TF, Qin D, Plattner G-K *et al.*), pp. 571–658. Cambridge University Press, Cambridge, UK and New York, NY, USA.
- IPCC Chap. 9, Flato G, Marotzke J *et al.* (2013) Evaluation of climate models. In: *Climate Change 2013: The Physical Science Basis. Contribution of Working Group I to the Fifth Assessment Report of the Intergovernmental Panel on Climate Change* (eds Stocker TF, Qin D, Plattner G-K *et al.*), pp. 741–866. Cambridge University Press, Cambridge, UK and New York, NY, USA.
- IPCC SPM (2013) Summary for policymakers. In: *Climate Change 2013: The Physical Science Basis. Contribution of Working Group I to the Fifth Assessment Report of the Intergovernmental Panel on Climate Change* (eds Stocker TF, Qin D, Plattner G-K *et al.*), pp. 4. Cambridge University Press, Cambridge, UK and New York, NY, USA.
- Jaffré M, Beaugrand G, Goberville E *et al.* (2013) Long-term phenological shifts in rap-tor migration and climate. *PLoS ONE*, **8**, e79112.
- Jones GS, Stott PA, Christidis N (2013) Attribution of observed historical near-surface temperature variations to anthropogenic and natural causes using CMIP5 simulations. *Journal of Geophysical Research: Atmospheres*, **118**, 4001–4024.
- Keeling CD, Whorf TP, Wahlen M, van der Plicht J (1995) Interannual extremes in the rate of rise of atmospheric carbon dioxide since 1980. *Nature*, **375**, 666–670.
- Kirby RR, Beaugrand G, Lindley JA (2009) Synergistic effects of climate and fishing in a marine ecosystem. *Ecosystems*, **12**, 548–561.
- Le Quéré C, Andres RJ, Boden T *et al.* (2013) The global carbon budget 1959–2011. *Earth System Science Data*, **5**, 165–185.
- Litzow MA, Mueter FJ (2014) Assessing the ecological importance of climate regime shifts: an approach from the North Pacific Ocean. *Progress in Oceanography*, **120**, 110–119.
- Lo T-T, Hsu H-H (2010) Change in the dominant decadal patterns and the late 1980s abrupt warming in the extratropical Northern Hemisphere. *Atmospheric Science Letters*, **11**, 210–215.
- Luczak C, Beaugrand G, Jaffré M, Lenoir S (2011) Climate change impact on Balearic Shearwater through a trophic cascade. *Biology Letters*, **7**, 702–705.
- Mann DH, Scott Rupp T, Olson MA, Duffy PA (2012) Is Alaska's boreal forest now crossing a major ecological threshold? *Arctic, Antarctic, and Alpine Research*, **44**, 319–331.
- Mantua NJ (2004) Methods for detecting regime shifts in large marine ecosystems: a review with approaches applied to North Pacific data. *Progress in Oceanography*, **60**, 165–182.
- McCormick MP, Thomason LW, Trepte CR (1995) Atmospheric effects of the Mt Pinatubo eruption. *Nature*, **373**, 399–404.
- Möllmann C, Diekmann R (2012) Chapter 4 - Marine ecosystem regime shifts induced by climate and overfishing: a review for the Northern Hemisphere. *Advances in Ecological Research*, **47**, 303–347.
- Morice CP, Kennedy JJ, Rayner NA, Jones PD (2012) Quantifying uncertainties in global and regional temperature change using an ensemble of observational estimates: the HadCRUT4 data set. *Journal of Geophysical Research: Atmospheres*, **117**, D08101.
- Myneni RB, Keeling CD, Tucker CJ, Asrar G, Nemani RR (1997) Increased plant growth in the northern high latitudes from 1981 to 1991. *Nature*, **386**, 698–702.
- Peterson WT, Schwing FB (2003) A new climate regime in northeast Pacific ecosystems. *Geophysical Research Letters*, **30**, 1896.
- Post MJ, Grund CJ, Weickmann AM, Healy KR, Willis RJ (1996) Comparison of Mount Pinatubo and El Chichón volcanic events: Lidar observations at 10.6 and 0.69 μm . *Journal of Geophysical Research: Atmospheres*, **101**, 3929–3940.
- Pounds JA, Fogden MPL, Campbell JH (1999) Biological response to climate change on a tropical mountain. *Nature*, **398**, 611–615.
- Pounds JA, Bustamante MR, Coloma LA *et al.* (2006) Widespread amphibian extinctions from epidemic disease driven by global warming. *Nature*, **439**, 161–167.
- Reid PC, Beaugrand G (2012) Global synchrony of an accelerating rise in sea surface temperature. *Journal of the Marine Biological Association of the United Kingdom*, **92**, 1435–1450.
- Reid PC, Borges M, Svendsen E (2001) A regime shift in the North Sea circa 1988 linked to changes in the North Sea horse mackerel fishery. *Fisheries Research*, **50**, 163–171.
- Robock A (2000) Volcanic eruptions and climate. *Reviews of Geophysics*, **38**, 191–219.
- Rodionov SN (2004) A sequential algorithm for testing climate regime shifts. *Geophysical Research Letters*, **31**, L09204.
- Rodionov SN (2006) Use of prewhitening in climate regime shift detection. *Geophysical Research Letters*, **33**, L12707.

- Rodionov SN, Overland JE (2005) Application of a sequential regime shift detection method to the Bering Sea ecosystem. *ICES Journal of Marine Science*, **62**, 328–332.
- Roether W, Klein B, Hainbucher D (2014) The Eastern Mediterranean Transient: evidence for similar events previously? In: *The Mediterranean Sea: Temporal Variability and Spatial Patterns* (eds Borzelli GLE, Gacic M, Lionello P, Malanotte-Rizzoli P), chap. 6, pp. 75–83, John Wiley & Sons, Inc., Oxford.
- Sarmiento JL, Gloor M, Gruber N *et al.* (2010) Trends and regional distributions of land and ocean carbon sinks. *Biogeosciences*, **7**, 2351–2367.
- Shepherd J, Caldeira K, Cox P *et al.* (2009) *Geoengineering the Climate*. The Royal Society, London. pp. i–ix, 1–82.
- Stern DI (2006) Reversal of the trend in global anthropogenic sulfur emissions. *Global Environmental Change*, **16**, 207–220.
- Sturm M, Racine C, Tape K (2001) Increasing shrub abundance in the Arctic. *Nature*, **411**, 546–547.
- Tao H, Borth H, Fraedrich K, Schneidereit A, Zhu X (2015) Hydrological extremes in the Aksu-Tarim River Basin. Part I: climatology and regime shift. *Climate Dynamics*. doi: 10.1007/s00382-015-2649-3.
- Taylor WA (2000) Change-point analysis: a powerful new tool for detecting changes. Available at: <http://www.variation.com/cpa/tech/changepoint.html> (accessed 4 February 2014).
- Varotsos C, Franzke CE, Efstathiou M, Degermendzhi A (2013) Evidence for two abrupt warming events of SST in the last century. *Theoretical and Applied Climatology*, **114**, 365–373.
- Vezzulli L, Brettar I, Pezzati E, Reid PC, Colwell RR, Hofle MG, Pruzzo C (2012) Long-term effects of ocean warming on the prokaryotic community: evidence from the vibrios. *The ISME Journal*, **6**, 21–30.
- Wild M (2009) Global dimming and brightening: a review. *Journal of Geophysical Research: Atmospheres*, **114**, D00D16.
- Xiao D, Li J, Zhao P (2012) Four-dimensional structures and physical process of the decadal abrupt changes of the northern extratropical ocean–atmosphere system in the 1980s. *International Journal of Climatology*, **32**, 983–994.
- Yasunaka S, Hanawa K (2002) Regime shifts found in the Northern Hemisphere SST field. *Journal of the Meteorological Society of Japan*, **80**, 119–135.
- Yasunaka S, Hanawa K (2003) Regime shifts in the northern hemisphere SST field: revisited in relation to tropical variations. *Journal of the Meteorological Society of Japan*, **81**, 415–424.

Supporting Information

Additional Supporting Information may be found in the online version of this article:

Figure S1. Autocorrelograms (a) for observed and (b) for simulated time series.

Figure S2. Comparison of multiple STARS on real and artificial time series: shift years.

Figure S3. Comparison of multiple STARS on real and artificial time series: shift strength.

Figure S4. Replotted figure SPM 1a from IPCC Summary for Policy Makers (2013).

Figure S5. Effects of the El Chichón and Pinatubo eruptions on radiation, redrawn from Robock (2000).

Table S1. Excel Database that includes all the annual values of the 72 analysed time series.

Table S2. Supporting source, background and methodology citations.

Table S3. Additional information and notes on the time series presented in Fig. 2.

Table S4. Coordinates for six regions of tropical hurricanes/storms in Fig. 6.

Table S5. Shift year of the time series from Fig. 2 included in the regions of Fig. 6.

A compendium of all the supplementary figures and Tables 2–5 with their legends plus additional references for Table S2.

Supporting Information

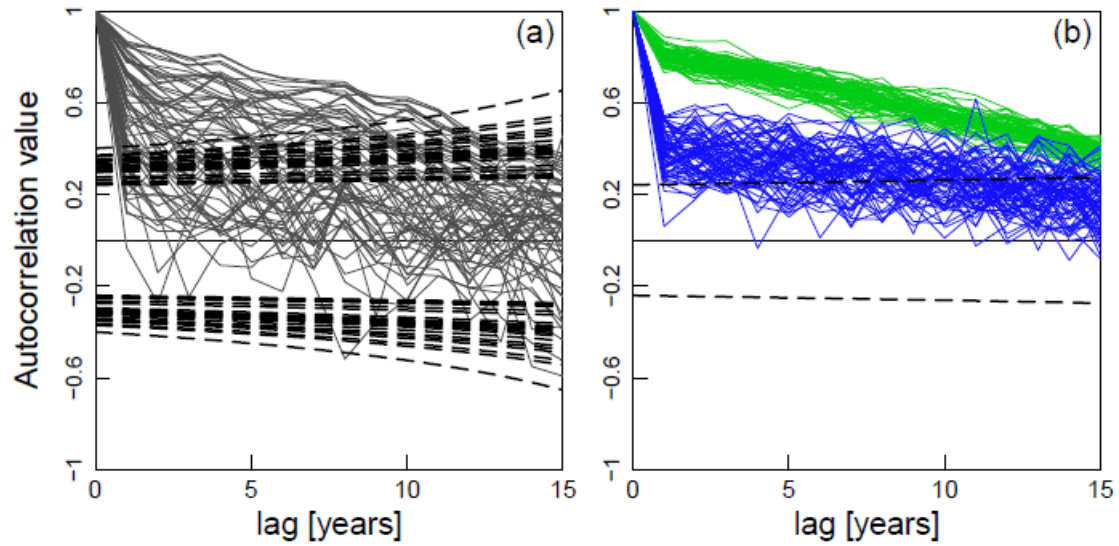


Fig. S1. Autocorrelograms **(a)** for observed and **(b)** for simulated time series: 70 highly autocorrelated time series (green) and 70 medium autocorrelated time series (blue) that correspond respectively to the maximum and medium autocorrelation observed in the real time series.

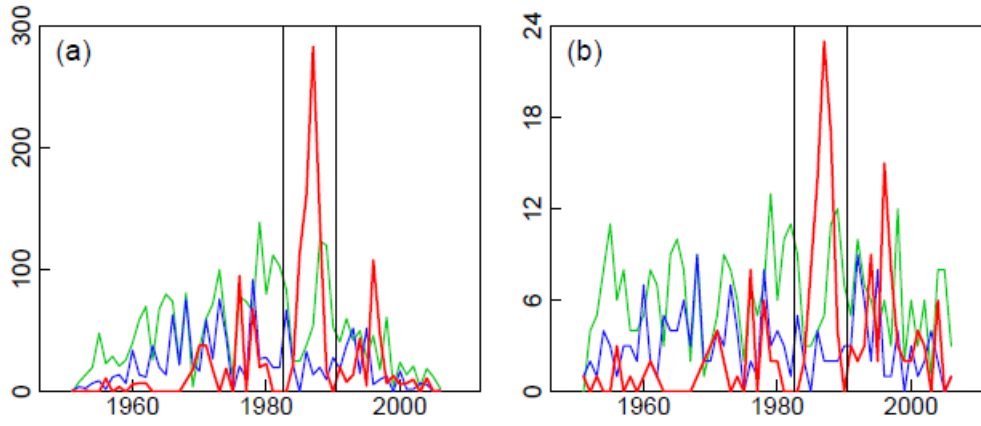


Fig. S2. Comparison of multiple STARS on real and artificial time series: shift years. Data plotted for 72 real time series (red), and 70 artificial time series (with medium – blue, and high autocorrelation - green) for the period from 1946-2012. The ‘period of interest’ (1983-1990) is marked by vertical lines. **(a)** Number of significant t-tests per year ($p \leq 0.05$). **(b)** Number of significant shift years per year ($p \leq 0.05$).

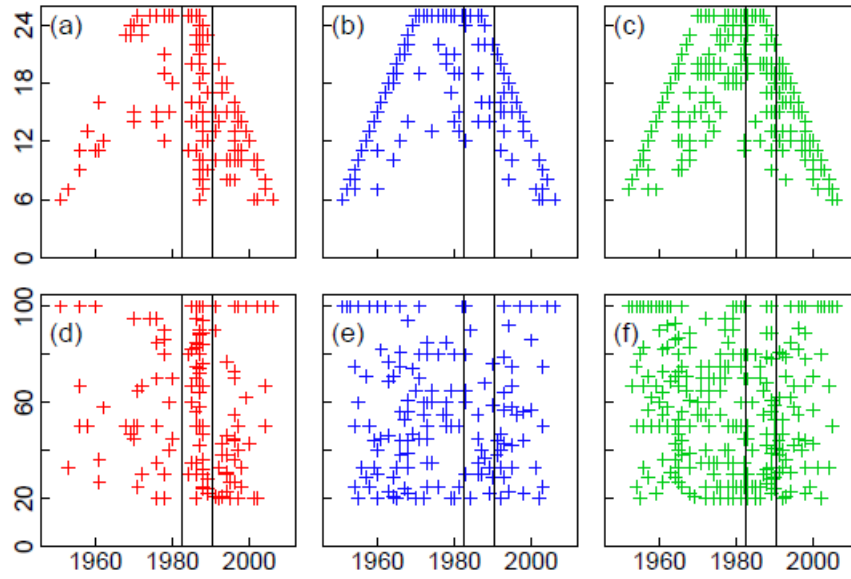


Fig. S3. Comparison of multiple STARS on real and artificial time series: shift strength. Real (a,d) and artificial (b,c,e,f) time series. Data and period analysed as in Supporting Information Fig. S2. (a-c) The length of the longest significant test-period for each shift year out of the 20 test-periods applied is between 6 to 25 years (y-axis). (d-f) The percentage of the number of significant t-tests ($p \leq 0.05$) against the total number of possible t-tests for each shift year (y-axis). Results below 20% discarded.

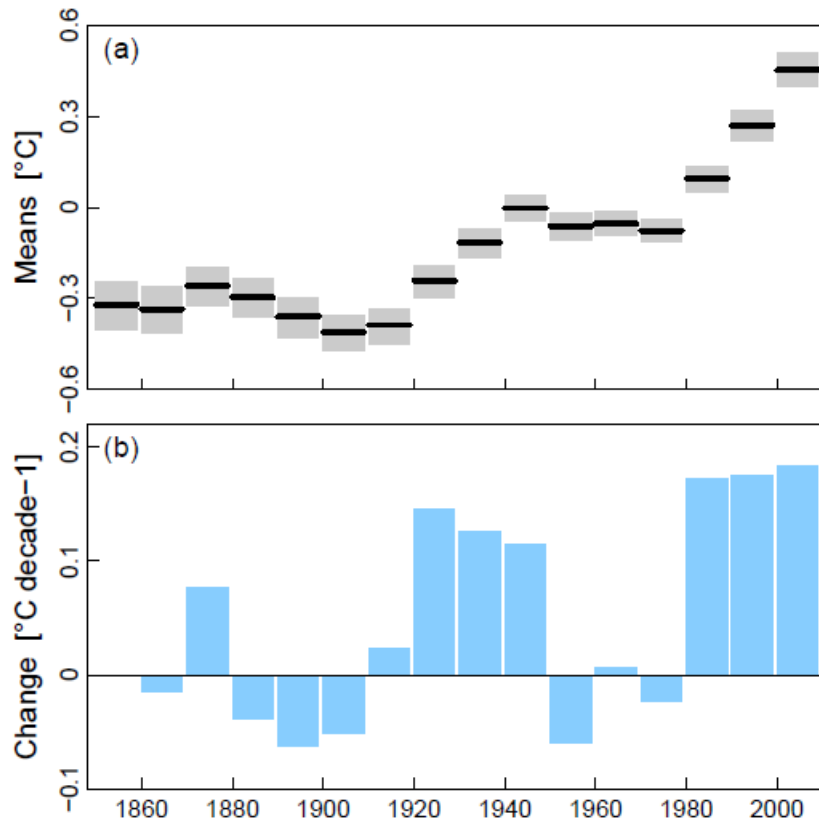


Fig. S4. Replotted figure SPM 1a from the IPCC Summary for Policy Makers (2013). Global temperature changes per decade: **(a)** Decadal global means of combined land and sea surface temperatures (HadCrut4.3.0.0) as anomalies relative to 1961-1990 for the period 1850 to 2009. Recalculated and re-plotted after figure SPM 1a in the IPCC Summary for Policy Makers (IPCC SPM, 2013); data courtesy Colin P. Mollis, Hadley Centre, Exeter, UK. **(b)** The change per decade.

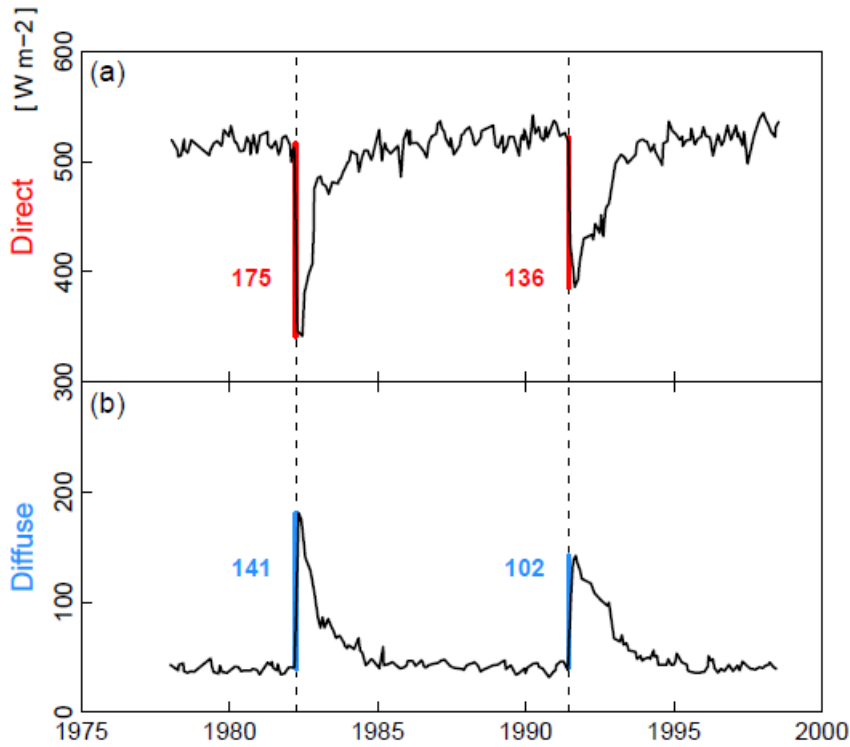


Fig. S5. Effects of the El Chichón and Pinatubo eruptions on radiation [W m^{-2}].

Direct and diffuse broadband radiation measurements from the Mauna Loa Observatory against years. Redrawn from (Robock, 2000) with superimposed dashed lines for both volcanic eruptions showing the extent and its value as a number of (a) the reduction of direct (red) and (b) the enhancement of diffuse (blue) radiation immediately after the eruptions of El Chichón at the end of March 1982 and Pinatubo in June 1991 (dashed lines). The lower numbers for Pinatubo are 78% (direct) and 72% (diffuse) of the change seen after the earlier eruption. The data were obtained with a tracking pyrheliometer and shade disk pyranometer on mornings with clear skies at a solar zenith angle of 60° , equivalent to two relative air masses. Data from NOAA/ESRL/GMD/GRAD Radiation Archive:

<ftp://aftp.cmdl.noaa.gov/data/radiation/baseline/> .

Table S1. Supporting Information Database

Excel file containing the data for all 72 time series analysed .

24. November 2015:

<http://onlinelibrary.wiley.com/doi/10.1111/gcb.13106/epdf> > open below menu

"Supplements" > right mouse click on Table S1: Save target as

Table S2. Supporting source, background and methodology citations. The table addresses the time series presented in Figs. 2-5.

Graph title		Supporting citations	Graph title		Supporting citations
Fig. 2					
a	Swiss ~26 km stratospheric temperature	Brocard <i>et al.</i> , 2013	w	Western USA Wildfire duration (days)	Westerling <i>et al.</i> , 2006
b	Swiss ~5 km tropospheric temperature	Brocard <i>et al.</i> , 2013	x	NH satellite vegetation	Myneni <i>et al.</i> , 1997
c	Meridional wind speed 60-75°N ~5 km a.s.l.	Xiao <i>et al.</i> , 2012	y	NH start of thermal growing season	Barichivich <i>et al.</i> , 2013; Barichivich <i>et al.</i> , 2012
d	Zonal wind speed 60-75°N ~5 km a.s.l.	Xiao <i>et al.</i> , 2012	z	NH length of thermal growing season	Barichivich <i>et al.</i> , 2013
e	China spring dust storm frequency	Ding <i>et al.</i> , 2005	aa	NH end of thermal growing season	Barichivich <i>et al.</i> , 2013; Barichivich <i>et al.</i> , 2012
f	Global tropical hurricane/storm days	Webster <i>et al.</i> , 2005	ab	Japan Kyoto cherry blossom	Aono and Kazui, 2008
g	NH seasonally varying Index (SV-NAM)	Ogi <i>et al.</i> , 2004	ac	UK sand martin arrival	Sparks and Tryjanowski, 2007
h	Arctic Oscillation Index (AO)	Thompson and Wallace, 1998	ad	Germany grape vine ripening date	Bock <i>et al.</i> , 2011
i	North Atlantic Oscillation (NAO DJFM)	Hurrell, 1995	ae	Baltic river Daugava winter flow	Klavins <i>et al.</i> , 2009
j	Arctic temperature (SST and LST)	Hansen <i>et al.</i> , 2006	af	Switzerland river temperature	Hari <i>et al.</i> , 2006; Jakob <i>et al.</i> , 2002
k	Arctic sea level pressure	Compo <i>et al.</i> , 2011	ag	Switzerland river pH	Jakob <i>et al.</i> , 2002; Sigg and Stumm, 2011
l	Alaska atmospheric CO ₂ , Apr-Sep	Barichivich <i>et al.</i> , 2012; Thoning <i>et al.</i> , 1989	ah	North Sea phytoplankton biomass	Reid <i>et al.</i> , 1998; Raitso <i>et al.</i> , 2014
m	Alaska atmospheric CO ₂ , Oct-Mar	Barichivich <i>et al.</i> , 2012; Thoning <i>et al.</i> , 1989	ai	North Sea temperature	Ingleby and Huddleston, 2007
n	Global CO ₂ net land uptake	Beaulieu <i>et al.</i> , 2012; Sarmiento <i>et al.</i> , 2010	aj	North Sea Skagerrak 50 m depth salinity	Danielssen <i>et al.</i> , 1996
o	NH time-integrated temp. of thermal growing season	Barichivich <i>et al.</i> , 2013	ak	Japan Sea temperature at 50 m depth	Tian <i>et al.</i> , 2008
p	Western Antarctica temperature (LST)	Bromwich <i>et al.</i> , 2013	al	North Pacific Kuroshio current flow	Japan Meteorological Agency 2006
q	Western Antarctica sea-ice extent	Parkinson and Cavalieri, 2008	am	Japan Sea deep living fish (egg numbers)	Fujino <i>et al.</i> , 2013
r	NH spring snow extent	Brown and Robinson, 2011	an	Japan Sea tuna catch	Tian <i>et al.</i> , 2008
s	Switzerland snow days, Dec-Mar	Marty 2008	ao	Germany lake algal spring bloom	Gerten and Adrian, 2000
t	Baltic Sea sea-ice extent	Axell and Lindquist, 2005	ap	Switzerland groundwater temperature	Figura <i>et al.</i> , 2011
u	Arctic sea-ice volume (Sep)	Lindsay <i>et al.</i> , 2009	aq	Switzerland Lake Zürich temperature	North <i>et al.</i> , 2013
v	NH sea-ice extent (Sep)	Rayner <i>et al.</i> , 2003	ar	SH annular Mode Index (SAM)	Marshall, 2003
Fig. 3					
a	Japan Kyoto cherry blossom blooming	Aono and Kazui, 2008			
b	Switzerland Liestal cherry blossom	Defila and Clot, 2001			
c	USA Washington D.C. cherry blossom	Chung <i>et al.</i> , 2011			
Fig. 4					
	Continents GHCN v3	Lawrimore <i>et al.</i> , 2011			
	Oceans HadSST3	Kennedy <i>et al.</i> , 2011			
Fig. 5					
a-c	GHCN v3	Lawrimore <i>et al.</i> , 2011	g-i	HadSST3	Kennedy <i>et al.</i> , 2011
d-f	CRUTEM4	Jones <i>et al.</i> , 2012	j-l	HadCRUT4	Morice <i>et al.</i> , 2012

Table S3. Additional information and notes on the time series presented in Fig. 2.

Dimensionless time series (i. e. NDVI, salinity, pH and indices) have no units; this is indicated with a dash '-'. Order as per Fig. 2: atmosphere, cryosphere, terrestrial, hydrophere (ocean and freshwater).

Time series title		Latitude / Longitude	Time period	Units:	Shift years
1	Processed by / Data Originator / Source				
2	Organisation				
3	Notes				
ATMOSPHERE					
a	Swiss ~26 km stratospheric temperature	46.82°N, 6.95°E	1976-2011	°C	1986
b	Swiss ~5 km tropospheric temperature	46.82°N, 6.95°E	1976-2011	°C	1988
	1,2 René Stübi, from Swiss Federal Office of Meteorology and Climatology (MeteoSwiss), Payerne, Switzerland				
c	Meridional wind speed 60-75°N ~5 km a.s.l.	360° circumglobal band 60°N-75°N	1948-2010	m s ⁻¹	1956, 1988
d	Zonal wind speed 60-75°N ~5 km a.s.l.	360° circumglobal band 60°N-75°N	1948-2010	m s ⁻¹	1988, 1997
	1,2 Dong Xiao, from Chinese Academy of Meteorological Sciences, Beijing, China				
e	China spring dust storm frequency	35°N-48°N, 75°E-102°E	1960-2011	No. of days of dust storms	1984
	1 Ruiqiang Ding				
	2 State Key Laboratory of Numerical Modeling for Atmospheric Sciences and Geophysical Fluid Dynamics (LASG), Beijing, China				
f	Global tropical hurricane/storm days	See Supp. Info. table S4	1970-2004	No. of days per year	1988
	1 Peter J. Webster, Violeta E. Toma & Hai-Ru Chang				
	2 Georgia Institute of Technology, Atlanta, USA				
	3 Global total derived from six-hourly reports summed from six ocean basins.				
g	NH SV-NAM Index	> 40°N	1948-2009	-	1987, 1994
	1 http://www.woa.ees.hokudai.ac.jp/people/yamazaki/SV-NAM/index.html				
	2 Hokkaido University, Japan				
	3 The index is the standardised score of the leading empirical orthogonal function (EOF) of the monthly and zonally averaged geopotential height fields poleward of 40°N from 1000 hPa to 200 hPa.				
h	Arctic Oscillation Index (AO)	> 20°N	1950-2012	-	1987, 1988, 1994
	1 http://www.esrl.noaa.gov/psd/data/climateindices/list/#AO				
	2 NOAA Earth System Research Laboratory, Boulder, USA				
	3 Determined as the leading orthogonal empirical function at the height of the 1000 hPa surface (approximately sea level pressure) and plotted as anomalies relative to 1979-2000.				
i	North Atlantic Oscillation (NAO, DJFM)	38.71-65.07°N, 9.14-22.72°W	1946-2011	hPa	1961, 1971, 1972, 1995
	1 https://climatedataguide.ucar.edu/sites/default/files/climate_index_files/nao_station_djfm.ascii				
	2 Climate Analysis Section, NCAR, Boulder, USA				
	3 The winter (December-March) NAO index used here is the normalised sea level pressure (SLP) between Lisbon, Portugal and Stykkisholmur/Reykjavik as anomalies relative to 1864-1983.				
j	Arctic temperature (SST and LST)	> ~64°N	1946-2012	°C	1987, 1999, 2004
	1 GISS Land-Ocean Temperature Index (LOTI), http://data.giss.nasa.gov/gistemp/tabledata_v3/ZonAnn.Ts+dSST.txt				
	2 NASA Goddard Institute for Space Studies (GISS), New York, USA				
k	Arctic sea level pressure	> 70°N	1946-2010	hPa	1987, 1995
	1 http://www.esrl.noaa.gov/psd/data/gridded/data_20thC_ReanV2.monolevel.mm.html				
	2 NOAA Earth System Research Laboratory, Boulder, USA				
l	Alaska atmospheric CO ₂ , Apr-Sep	71.32°N, 156.61°W	1972-2010	ppm	1985, 1988
m	Alaska atmospheric CO ₂ , Oct-Mar	71.32°N, 156.61°W	1972-2010	ppm	1986, 1988
	1 Jonathan Barichivich and Renata E. Hari; ftp://ftp.cmdl.noaa.gov/ccg/co2/GLOBALVIEW				
	2 Cooperative Atmospheric Data Integration Project – CarbonDioxide, Boulder, USA				
n	Global CO ₂ net land uptake	90°S-90°N	1966-2003	Pg C year ⁻¹	1988
	1,2 Claudie Beaulieu, from Ocean and Earth Science, University of Southampton, UK				
	3 The net land uptake (NLU) is calculated as a difference between annually reported global fossil fuel emissions, the growth rate of atmospheric CO ₂ as a mean of measurements at Mauna Loa and the South Pole and the ocean uptake as a mean calculated from four ocean biogeochemical models. The NLU, as opposed to the land uptake, does not require specification of land use sources, which have remained approximately constant from 1959 to 2006.				
o	NH integrated temperature growing season	> 35°N	1950-2011	°C	1987, 2004
	1,2 Jonathan Barichivich, from University of East Anglia, UK				
	3 The thermal growing season is defined as the period of the year with daily mean air temperatures > 5°C. Plotted as anomalies relative to 1961-1990.				
p	Western Antarctica temperature (LST)	80°S, 120°W	1957-2012	°C	1986
	1 David H. Bromwich, http://polarmet.osu.edu/Byrd_recon/				
	2 The Ohio State University, Columbus, USA				

Time series title					
1 Processed by / Data Originator / Source					
2 Organisation					
3 Notes					
		Latitude / Longitude	Time period	Units:	Shift years
CRYOSPHERE					
q	Western Antarctica sea-ice extent	50°S-75°S, 60°W-130°W	1979-2010	10 ⁶ km ²	1987
1	Claire L. Parkinson	or coast of Antarctica			
2	NASA Goddard Space Flight Center, Greenbelt, USA				
r	NH spring snow extent	0-90°N	1946-2010	10 ⁶ km ²	1953, 1987
1	Ross Brown, see also: http://www.the-cryosphere.net/5/219/2011/tc-5-219-2011-supplement.zip				
2	Climate Research Division, Environment Canada, Montreal, Canada				
s	Swiss snow days, Dec-Mar	45.82°N-47.81°N, 5.96°E-10.49°E	1946 to 2012	snow days	1987
1,2	Christoph Marty, from WSL Institute for Snow and Avalanche Research, Davos, Switzerland and the Swiss Federal Office of Meteorology and Climatology (MeteoSwiss)				
3	Mean of seven low-altitude stations (201-800 m). For this altitudinal band a snow day is when the snow depth exceeds a threshold of 5 cm.				
t	Baltic Sea sea-ice extent	53.91°N-65.91°N, 9.43°E-30.3°E, and Kattegat up to the tip of Skagen at 57.75°N	1946-2012	10 ⁶ km ²	1987
1	Lars B. Axell and Karin Borenäs				
2	Sveriges Meteorologiska och Hydrologiska Institut (SMHI), Norrköping and Gothenburg, Sweden				
3	From 1957 to 2012 the time series is based on digitized hand-drawn ice charts and prior to 1957 on a least-squares method applied to observations along the Swedish coast. The total area evaluated covers 420·10 ³ km ² with the maximum ice extent due to the methodology prior to 1957 equal to ~351·10 ³ km ² .				
u	Arctic sea-ice volume (Sep)	> 65°N	1950-2012	10 ³ km ³	1960, 1980, 1988, 1992, 1994, 1997, 2004
1	Ron Lindsay, from the PIOMAS ice-ocean coupled model				
2	Polar Science Center, University of Washington				
v	NH sea-ice extent (Sep)	0-90°N	1960-2011	10 ³ km ²	1978, 1989, 1998, 2001, 2004
1	Ron Lindsay, from the Hadley Centre Global Sea Ice and Sea Surface Temperature (HadISST1) gridded dataset http://www.metoffice.gov.uk/hadobs/hadisst/				
2	Polar Science Center, University of Washington, Seattle, USA				
TERRESTRIAL					
w	Western USA Wildfire duration (d)	31°N-49°N, 102°W-125°W	1970-2003	No. of days per fire	1985
1	Anthony L. Westerling				
2	University of California, Merced, USA				
3	The time series is based on 1166 large (> 400 ha) forest wildfires.				
x	NH satellite vegetation	> 45°N	1982-2010	-	1987, 1988, 1996
1	NDVI3g (third generation Global Inventory Modeling and Mapping System (GIMMS) NDVI				
y	NH start thermal growing season	> 35°N	1950-2011	day of the yr	1972, 1988
z	NH length thermal growing season	> 35°N	1950-2011	days	1987, 2004
aa	NH end thermal growing season	> 35°N	1950-2011	day of the yr	1993, 2002
1	Jonathan Barichivich				
2	University of East Anglia, UK				
3	The thermal growing season is defined as the period of the year with daily mean air temperatures > 5°C. Plotted as anomalies relative to 1961-1990.				
ab	Japan Kyoto cherry blossom	35°N, 136.67°E	1946-2012	day of the yr	1988
1	Yasuyuki Aono, data updated and revised				
2	Osaka Prefecture University, Japan				
ac	UK sand martin arrival	50.72°N-54.19°N, 2.58°W-1.75°E	1950-2005	day of the yr	1976, 1980, 1988
1	Tim Sparks				
2	Coventry University, UK				
ad	Germany grape vine ripening date	49.83°N, 9.87°E	1968-2010	day of the yr	1987, 1991
1	Anna Bock				
2	Technische Universität München, Freising, Germany				
3	Harvested from the vineyards of the Landesanstalt für Weinbau und Gartenbau (the regional office for viticulture and horticulture) Veitshöchheim, Franconia, Germany.				

	Time series title	Latitude / Longitude	Time period	Units:	Shift years
	HYDROSPHERE (OCEAN AND FRESHWATER)				
ae	Baltic river Daugava winter flow 1 Maris Klavins 2 University of Latvia, Riga, Latvia 3 Basin area: 64'500 km ² .	55.2°N-57.4°N, 24°E-28.2°E	1946-2010	m ³ s ⁻¹	1987
af	Swiss river temperature 1 Renata E. Hari 2 Swiss Federal Office for the Environment (BAFU), Hydrology Division	45.82°N-47.81°N, 5.9°E-10.49°E	1978-2011	°C	1987
ag	Swiss river pH 1 Renata E. Hari 2 Swiss Federal Office for the Environment (BAFU), Hydrology Division 3 Legislation to reduce phosphate inputs to lakes and rivers was introduced in Switzerland in 1986. This would have had the opposite effect to the observed increase in pH: less phosphate → less algal growth → more CO ₂ → lower pH. It is more likely that the higher pH reflects increased algal growth due to higher temperatures, more sunshine and a higher CO ₂ concentration or increased weathering.	45.82°N-47.81°N, 5.9°E-10.49°E	1977-2010	-	1991
ah	North Sea phytoplankton biomass 1 Sir Alister Hardy Foundation for Ocean Science (SAHFOS). 2 SAHFOS, Plymouth, UK 3 Unit details: Four colour categories calibrated by acetone extracts and fluorescence	51°N-61°N, 3°W-10°E	1946-2011	Colour categories	1951, 1985
ai	North Sea temperature 1 Simon A. Good 2 UK Met Office Hadley Centre, Exeter; EN3: quality controlled subsurface ocean temperature and salinity dataset. See: http://www.metoffice.gov.uk/hadobs/en3/	50°N-61°N and 3°W-9°E	1950-2011	°C	1987, 2001
aj	North Sea 50 m depth salinity 1 Else Juul Green, http://ocean.ices.dk/HydChem/HydChem.aspx?plot=yes 2 International Council for the Exploration of the Seas, Copenhagen, Denmark 3 The sampling location is equivalent to the Norwegian station Z220, which is 20 miles from the Norwegian coast. Measurements have been taken approximately once a month.	58.13°N, 9.18°E	1965-2007	-	1988
ak	Japan Sea temperature at 50 m depth 1 Yongjun Tian from the Japan Sea National Fisheries Research Institute. 2 Japan Sea National Fisheries Research Institute, Niigata, Japan. 3 Monthly measurements taken in the Japan Sea. to cover the path of the Tsushima Current between Wakasa Bay in Kyoto Prefecture and Yamaguchi Prefecture, Japan and averaged for the area within 33-38°N, 130-136°E.	33-38°N, 130-136°E	1964-2008	°C	1987
al	North Pacific Kuroshio current flow 1 Yongjun Tian from the Japan Meteorological Agency (JMA), Tokyo, Japan. 2 Japan Sea National Fisheries Research Institute, Niigata, Japan. 3 Current flow estimated from geostrophic calculations based on temperature and salinity profiles taken twice a year (summer = Jul-Sep and winter = Jan-Mar) on a standard north to south section during research cruises of the Japan Meteorological Agency (JMA).	across 137°E between 3-34°N	1972-2011	1 Sv = 10 ⁶ m ³ s ⁻¹	1987
am	Japan Sea deep living fish (eggs) 1 Yongjun Tian from the Japan Meteorological Agency (JMA), Tokyo, Japan. 2 Japan Sea National Fisheries Research Institute, Niigata, Japan. 3 Sampling stations were located within approximately 185 km of the coast of Japan. This abundant mesopelagic (1000-100 m deep) species normally swims between 150 to 250 m during the daytime and migrates to shallower depths during the night.	between 34.45°N-41.17°N and	1981-2005	No. of eggs per m ²	1988
an	Japan Sea tuna catch 1 Yongjun Tian from the Japan Meteorological Agency (JMA), Tokyo, Japan. 2 Japan Sea National Fisheries Research Institute, Niigata, Japan. 3 Mostly comprising warm-water bluefin, albacore, and yellowfin tuna.	34°N-41.5°N, 131°E-141°E	1964-2004	10 ³ tons	1991
ao	Germany lake algal spring bloom 1 Rita Adrian 2 Leibniz- Institute of Freshwater Ecology and Inland Fisheries, Berlin, Germany. 3 The timing refers to the calendar week of the year when maximum total phytoplankton biomass developed after ice-off.	13.65°E, 52.43°N	1980-2010	Calendar week	1987
ap	Swiss groundwater temperature 1 Simon Figura 2 Energie Wasser Bern and Städtische Werke Schaffhausen und Neuhausen am Rheinfall	Pump-stations: Kiesen 46.80°N, 7.57°E; Neuhausen 47.68°N, 8.61°E	1970-2005	°C	1987
aq	Swiss Lake Zürich temperature 1 Ryan P. North. 2 Oliver Köster from Wasserversorgung der Stadt Zürich	47.37°N-47.20°N, 8.53°E-8.82°E	1946-2005	°C	1987
ar	SH Annular Mode Index (SAM) 1 http://www.nerc-bas.ac.uk/icd/gjma/sam.html 2 British Antarctic Survey, Cambridge, UK 3 The index used here is derived from a proxy zonal mean sea level pressure for 40°S and 65°S calculated from twelve meteorological stations that approximate to each of these latitudes, anomalies relative to 1971-2000.	40°S and 65°S	1957-2012	-	1992, 1996

Table S4. Coordinates for six regions of tropical hurricane/storms in Fig. 6. The six regions (A-F, outlined in Fig. 6) are averaged to give a ‘global’ total for tropical hurricane/storm days.

Ocean region	Minimum latitude	Maximum latitude	Minimum longitude	Maximum longitude
A Eastern North Pacific	5°N	20°N	90°W	120°W
B North Atlantic	5°N	25°N	20°W	90°W
C North Indian	5°N	20°N	55°E	90°E
D South Indian	5°S	20°S	50°E	115°E
E Western North Pacific	5°N	20°N	120°E	180°E
F Southwest Pacific	5°S	20°S	155°E	180°E

Table S5. Shift year of the time series from Fig. 2 included in the regions of Fig. 6.

EUROPE INSET		
2b	Switzerland Payerne ~5 km tropospheric air temperature, atmosphere	1988
2t	Baltic Sea sea-ice extent, cryosphere	1987
2ac	UK sand martin arrival date, terrestrial biosphere	1988
2ad	Germany grape vine ripening date, terrestrial biosphere	1987
2ae	Baltic river Daugava winter flow, terrestrial hydrosphere	1987
2af	Switzerland river temperature, terrestrial hydrosphere	1987
2ah	North Sea phytoplankton biomass, marine biosphere	1985
2ai	North Sea temperature, marine hydrosphere	1987
2ao	Germany Lake Müggelsee algal bloom spring timing, terrestrial biosphere	1987
JAPAN INSET		
2ak	Japan Sea temperature at 50m depth, marine hydrosphere	1987
2al	Western North Pacific Kuroshio current flow, marine hydrosphere	1987
2ab	Japan Kyoto cherry blossom blooming, terrestrial biosphere	1988
GLOBAL MAP		
North America		
2m	Alaska Point Barrow atmospheric CO ₂ concentration (Apr-Sep), atmosphere	1985
2n	Alaska Point Barrow atmospheric CO ₂ concentration (Oct-Mar), atmosphere	1986
2w	Western USA Wildfire duration (days), terrestrial biosphere	1985
Asia		
2e	China dust storm frequency (March-May), atmosphere	1984
Tropics		
2f	Global tropical hurricane/storm days (mean areas A-F), atmosphere	1988
Antarctica		
2p	Western Antarctica air surface temperature Byrd station, atmosphere	1986
2q	Western Antarctica sea-ice extent, cryosphere	1987
GLOBAL AND HEMISPHERIC TIME SERIES		
Arrows left to right:		
2n	Global CO ₂ net land uptake, atmosphere	1988
2r	Northern Hemisphere spring snow extent, cryosphere	1987
2x	Northern Hemisphere vegetation from satellites, terrestrial biosphere	1987
2j	Arctic combined sea and air surface temperature, atmosphere	1987
2k	Arctic sea level pressure, atmosphere	1987
2c	Meridional wind speed 60-75°N (360°) ~5 km above sea level, atmosphere	1988
2d	Zonal wind speed 60-75°N (360°) ~5 km above sea level, atmosphere	1988

Additional References for Supporting Information table S2

- Aono Y, Kazui K (2008) Phenological data series of cherry tree flowering in Kyoto, Japan, and its application to reconstruction of springtime temperatures since the 9th century. *International Journal of Climatology*, **28**, 905-914.
- Axell L, Lindquist K (2005) Reconstruction of Annual Maximum Ice Extent in the Baltic Sea 1660-2005. In: *Fifth Workshop on Baltic Sea Ice Climate*. (eds Schrum C, Schmelzer N), pp. 79-80, Bundesamt für Seeschifffahrt und Hydrographie, Hamburg, Germany.
- Barichivich J, Briffa KR, Myneni R *et al.* (2013) Large-scale variations in the vegetation growing season and annual cycle of atmospheric CO₂ at high northern latitudes from 1950 to 2011. *Global Change Biology*, **19**, 3167-3183.
- Barichivich J, Briffa KR, Osborn TJ, Melvin TM, Caesar J (2012) Thermal growing season and timing of biospheric carbon uptake across the Northern Hemisphere. *Global Biogeochemical Cycles*, **26**, GB4015.
- Beaulieu C, Sarmiento JL, Mikaloff Fletcher SE, Chen J, Medvigy D (2012) Identification and characterization of abrupt changes in the land uptake of carbon. *Global Biogeochemical Cycles*, **26**, GB1007.
- Bock A, Sparks T, Estrella N, Menzel A (2011) Changes in the phenology and composition of wine from Franconia, Germany. *Climate Research*, **50**, 69-81.
- Brocard E, Jeannet P, Begert M, Levrat G, Philipona R, Romanens G, Scherrer SC (2013) Upper air temperature trends above Switzerland 1959–2011. *Journal of Geophysical Research: Atmospheres*, **118**, 4303-4317.
- Bromwich DH, Nicolas JP, Monaghan AJ, Lazzara MA, Keller LM, Weidner GA, Wilson AB (2013) Central West Antarctica among the most rapidly warming regions on Earth. *Nature Geoscience*, **6**, 139-145.
- Brown RD, Robinson DA (2011) Northern Hemisphere spring snow cover variability and change over 1922-2010 including an assessment of uncertainty. *The Cryosphere*, **5**, 219–229.
- Chung U, Mack L, Yun JI, Kim S-H (2011) Predicting the timing of cherry blossoms in Washington, DC and Mid-Atlantic states in response to climate change. *PLoS One*, **6**, e27439.
- Compo GP, Whitaker JS, Sardeshmukh PD *et al.* (2011) The Twentieth Century Reanalysis Project. *Quarterly Journal of the Royal Meteorological Society*, **137**, 1-28.
- Danielssen DS, Svendsen E, Ostrowski M (1996) Long-term hydrographic variation in the Skagerrak based on the section Torungen–Hirtshals. *ICES Journal of Marine Science*, **53**, 917–925.
- Defila C, Clot B (2001) Phytophenological trends in Switzerland. *International Journal of Biometeorology*, **45**, 203-207.
- Ding R, Li J, Wang S, Ren F (2005) Decadal change of the spring dust storm in northwest China and the associated atmospheric circulation. *Geophysical Research Letters*, **32**, L02808.
- Figura S, Livingstone DM, Hoehn E, Kipfer R (2011) Regime shift in groundwater temperature triggered by the Arctic Oscillation. *Geophysical Research Letters*, **38**, L23401.
- Fujino T, Goto T, Shimura T *et al.* (2013) Decadal variation in egg abundance of a mesopelagic fish, *Maurolicus japonicus*, in the Japan Sea during 1981-2005. *Journal of Marine Science and Technology*, **21**, 58-62.

- Gerten D, Adrian R (2000) Climate-driven changes in spring plankton dynamics and the sensitivity of shallow polymictic lakes to the North Atlantic Oscillation. *Limnology and Oceanography*, **45**, 1058-1066.
- Hansen J, Sato M, Ruedy R, Lo K, Lea DW, Medina-Elizade M (2006) Global temperature change. *Proceedings of the National Academy of Sciences of the United States of America*, **103**, 14288-14293.
- Hari RE, Livingstone DM, Siber R, Burkhardt-Holm P, Güttinger H (2006) Consequences of climatic change for water temperature and brown trout populations in Alpine rivers and streams. *Global Change Biology*, **12**, 10-26.
- Hurrell JW (1995) Decadal trends in the North Atlantic Oscillation: regional temperatures and precipitation. *Science*, **269**, 676-679.
- Ingleby B, Huddleston M (2007) Quality control of ocean temperature and salinity profiles — Historical and real-time data. *Journal of Marine Systems*, **65**, 158-175.
- Jakob A, Binderheim-Bankay E, Davis JS (2002) National long-term surveillance of Swiss rivers. *Verhandlungen Internationale Vereinigung für theoretische und angewandte Limnologie*, **28**, 1101-1106.
- Japan Meteorological Agency (2006) *The Medical Examination of the Sea: a Synthetic Examination* (First Edition, in Japanese), pp. 196.
- Jones PD, Lister DH, Osborn TJ, Harpham C, Salmon M, Morice CP (2012) Hemispheric and large-scale land-surface air temperature variations: An extensive revision and an update to 2010. *Journal of Geophysical Research: Atmospheres*, **117**, D05127.
- Kennedy JJ, Rayner NA, Smith RO, Parker DE, Saunby M (2011) Reassessing biases and other uncertainties in sea surface temperature observations measured in situ since 1850: 1. Measurement and sampling uncertainties. *Journal of Geophysical Research: Atmospheres*, **116**, D14103.
- Klavins M, Briede A, Rodinov V (2009) Long term changes in ice and discharge regime of rivers in the Baltic region in relation to climatic variability. *Climatic Change*, **95**, 485-498.
- Lawrimore JH, Menne MJ, Gleason BE, Williams CN, Wuertz DB, Vose RS, Rennie J (2011) An overview of the Global Historical Climatology Network monthly mean temperature data set, version 3. *Journal of Geophysical Research: Atmospheres*, **116**, D19121.
- Lindsay RW, Zhang J, Schweiger A, Steele M, Stern H (2009) Arctic sea ice retreat in 2007 follows thinning trend. *Journal of Climate*, **22**, 165-176.
- Marshall GJ (2003) Trends in the Southern Annular Mode from observations and reanalyses. *Journal of Climate*, **16**, 4134-4143.
- Marty C (2008) Regime shift of snow days in Switzerland. *Geophysical Research Letters*, **35**, L12501.
- Morice CP, Kennedy J.J, Rayner NA, Jones PD (2012) Quantifying uncertainties in global and regional temperature change using an ensemble of observational estimates: The HadCRUT4 dataset. *Journal of Geophysical Research: Atmospheres*, **117**, D08101.
- Myneni RB, Keeling CD, Tucker CJ, Asrar G, Nemani RR (1997) Increased plant growth in the northern high latitudes from 1981 to 1991. *Nature*, **386**, 698-702.
- North RP, Livingstone DM, Hari RE, Köster O, Niederhauser P, Kipfer R (2013) The physical impact of the late 1980s climate regime shift on Swiss lakes and rivers. *Inland Waters*, **3**, 341-350.
- Ogi M, Yamazaki K, Tachibana Y (2004) The summertime annular mode in the Northern Hemisphere and its linkage to the winter mode. *Journal of Geophysical Research: Atmospheres*, **109**, D20114.

- Parkinson CL, Cavalieri DJ (2008) Arctic sea ice variability and trends, 1979–2006. *Journal of Geophysical Research: Oceans*, **113**, C07003.
- Raitsos DE, Pradhan Y, Lavender SJ, Hoteit I, Mcquatters-Gollop A, Reid PC, Richardson AJ (2013) From silk to satellite: half a century of ocean colour anomalies in the Northeast Atlantic. *Global Change Biology*, **20** 2117-23.
- Rayner NA, Parker DE, Horton EB *et al.* (2003) Global analyses of sea surface temperature, sea ice, and night marine air temperature since the late nineteenth century. *Journal of Geophysical Research: Atmospheres*, **108**, 4407.
- Reid PC, Edwards M, Hunt HG, Warner AJ (1998) Phytoplankton change in the North Atlantic. *Nature*, **391**, 546.
- Sarmiento JL, Gloor M, Gruber N *et al.* (2010) Trends and regional distributions of land and ocean carbon sinks. *Biogeosciences*, **7**, 2351- 2367.
- Sigg L, Stumm W (2011) *Aquatische Chemie. Einführung in die Chemie natürlicher Gewässer*. Zürich, vdf Hochschulverlag AG an der ETH Zürich.
- Sparks T, Tryjanowski P (2007) Patterns of spring arrival dates differ in two hirundines. *Climate Research*, **35**, 159-164.
- Thompson DWJ, Wallace JM (1998) The Arctic Oscillation signature in the wintertime geopotential height and temperature fields. *Geophysical Research Letters*, **25**, 1297-1300.
- Thoning KW, Tans PP, Komhyr WD (1989) Atmospheric carbon dioxide at Mauna Loa Observatory: 2. Analysis of the NOAA GMCC data, 1974–1985. *Journal of Geophysical Research: Atmospheres*, **94**, 8549-8565.
- Tian Y, Kidokoro H, Watanabe T, Iguchi N (2008) The late 1980s regime shift in the ecosystem of Tsushima warm current in the Japan/East Sea: evidence from historical data and possible mechanisms. *Progress in Oceanography*, **77**, 127-145.
- Webster PJ, Holland GJ, Curry JA, Chang H-R (2005) Changes in tropical cyclone number, duration, and intensity in a warming environment. *Science*, **309**, 1844-1846.
- Westerling AL, Hidalgo HG, Cayan DR, Chang H-R (2006) Warming and earlier spring increase western U.S. forest wildfire activity. *Science*. **313**, 940-943.
- Xiao D, Li J, Zhao P (2012) Four-dimensional structures and physical process of the decadal abrupt changes of the northern extratropical ocean–atmosphere system in the 1980s. *International Journal of Climatology*, **32**, 983-994.