

HOSTED BY



ELSEVIER

Contents lists available at [ScienceDirect](http://ScienceDirect.com)

The Egyptian Heart Journal

journal homepage: www.elsevier.com/locate/ehj

CASE REPORT

Catheter intervention for abnormal pulmonary venous drainage

Sedigheh Saedi*, Tahereh Saedi

Rajaie Cardiovascular Medical and Research Center, Iran University of Medical Sciences, Tehran, Iran

ARTICLE INFO

Article history:

Received 13 October 2017

Accepted 20 January 2018

Available online 1 February 2018

ABSTRACT

Transcatheter interventions for congenital heart anomalies are constantly improving. Although correction of anomalous pulmonary venous connection is routinely achieved through surgery, there are rare instances where the abnormal pulmonary vein has dual connections to both left atrium and the major systemic veins. Under these circumstances catheter based treatment might become a feasible option. We report a case of dual supply vertical vein connected to left upper pulmonary vein and innominate vein which was successfully obstructed by an occluder device leading to improvements in patient's condition.

© 2018 Egyptian Society of Cardiology. Production and hosting by Elsevier B.V. This is an open access article under the CC BY-NC-ND license (<http://creativecommons.org/licenses/by-nc-nd/4.0/>).

1. Introduction

Partial anomalous pulmonary venous connections (PAPVCs) are abnormal connections of the one or more of the pulmonary veins to the right sided heart chambers leading to left to right shunting of blood. Rarely the abnormal pulmonary vein (PV) has a dual connection to both left atrium (LA) and the superior/inferior vena cava via a Simitar or vertical vein. Here we describe a young symptomatic man with dual drainage of an isolated PAPVC successfully repaired by catheter intervention leading to resolution of symptoms.

2. Case

A 28-year-old male presented to our cardiology clinic complaining of palpitation and dyspnea NYHA class I (The New York Heart Association Functional Classification). Palpitation was activity related and hindered his working capacity. He did not mention any past history of medical conditions or drug use. Physical examination findings were unremarkable.

Twelve lead ECG revealed sinus tachycardia with heart rate of about 110 beats/minute, normal axis and right bundle branch block pattern without arrhythmias.

Chest X-ray findings were within normal limits. Exercise stress testing ordered to mimic patient's chief complaint of exercised induced palpitation and investigate for activity related arrhythmias was completely normal with the patient accomplishing the

exercise protocol asymptotically and achieving the functional capacity of 11 METs. Oxygen saturation in room air was 94%.

Transthoracic echocardiography was performed showing normal left ventricular size and systolic function, mild right ventricular enlargement with preserved systolic function. There was no valvular abnormality and no atrial septal defects (ASD) or other intra-cardiac communications were detected. In the suprasternal view however an abnormal vessel parallel to proximal descending aorta with its color Doppler flow moving towards the transducer was detected in favor of a vertical vein raising the likelihood of an isolated left sided partial anomalous pulmonary venous drainage/connection (PAPVC) (Fig. 1).

In transesophageal echocardiography the left upper pulmonary vein was unexpectedly seen to be connected to the left atrium on the distal end in an almost usual fashion, but when its course was followed the proximal end also drained to a vertical vein and thereby to the right side heart chambers resulting in a left to right shunt. No ASD or patent foramen ovale was present. To further investigate this unusual anatomy, cardiac magnetic resonance imaging was performed and revealed the abnormal pulmonary vein had a dual connection both to left atrium and vertical vein (hence indirectly to the right atrium) (Fig. 2). No other associated abnormality was reported. The patient underwent cardiac catheterization that confirmed the connection of the vertical vein to both innominate vein and the left atrium via the left upper pulmonary vein (Figs. 3 and 4). The systolic pulmonary arterial pressures was 32 mmHg. As the RV had become enlarged and the patient was symptomatic, it was decided to occlude the vertical vein percutaneously. A 0.035 guide wire and a multipurpose catheter was passed from the femoral vein through inferior vena cava (IVC), RA, SVC, innominate vein, vertical vein and the left upper pulmonary vein. Then the guide wire was exchanged for an extra-stiff guide wire over which a long 12-F delivery sheath was

Peer review under responsibility of Egyptian Society of Cardiology.

* Corresponding author at: Rajaie Cardiovascular Medical and Research Center, Niayesh Highway, Adjacent to Mellat Park, Tehran, Iran.

E-mail address: ssaedi@rhc.ac.ir (S. Saedi).

<https://doi.org/10.1016/j.ehj.2018.01.003>

1110-2608/© 2018 Egyptian Society of Cardiology. Production and hosting by Elsevier B.V.

This is an open access article under the CC BY-NC-ND license (<http://creativecommons.org/licenses/by-nc-nd/4.0/>).

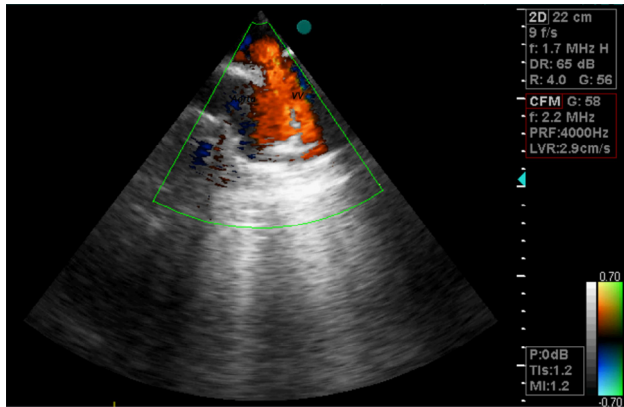


Fig. 1. Suprasternal echocardiographic view demonstrating left vertical vein (VV) with direction of flow towards transducer.

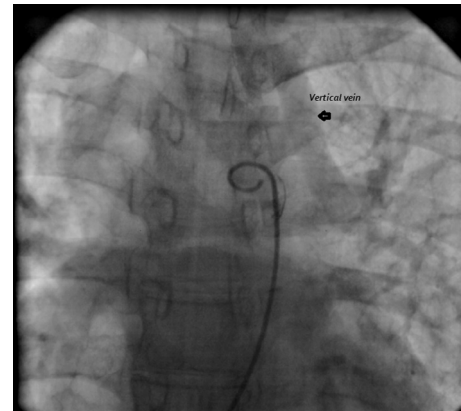


Fig. 3. Pulmonary artery injection in showing vertical vein in levo-phase.

placed. The vertical vein maximal diameter measured about 9–10 mm in both CMR and the angiographic views, therefore with 2 mm oversizing similar to conventional VSD closure procedures a 12 mm symmetric muscular ventricular septal occluder device (Cera occluder, Lifetech Scientific, China) was chosen to achieve complete obstruction with minimal risk for residual shunting. The device was then loaded on the cable and advanced in the delivery sheath. After confirming the appropriate position, the device was released at the end of the vertical vein. Control contrast injection and levo-phase imaging confirmed successful positioning of the device with no residual leakage (Fig. 5). Follow up echocardiography 24 h after the procedure showed eliminated flow of the vertical vein and proper position of the device with no compressive effect on adjacent structures and no clot. The patient was discharged on aspirin 80 mg and clopidogrel 75 mg daily. In one month clinic visit the patient stated that the palpitation had disappeared and functional capacity improved. Transthoracic echocardiography one, six and twelve months post-procedure confirmed satisfactory results with reduction in right ventricle end diastolic diameter and good device position.

3. Discussion

Partial anomalous pulmonary venous connections have different anatomic sub-types with all resulting in left to right shunt, volume overload and enlargement of the right sided cardiac chambers. Therefore whenever patients with unexplained right ventricular enlargement are encountered in clinical practice or during echocardiographic evaluation, vigorous search for PAPVCs should be performed. Right sided anomalous pulmonary veins usually have abnormal connections to SVC, RA, coronary sinus or drain

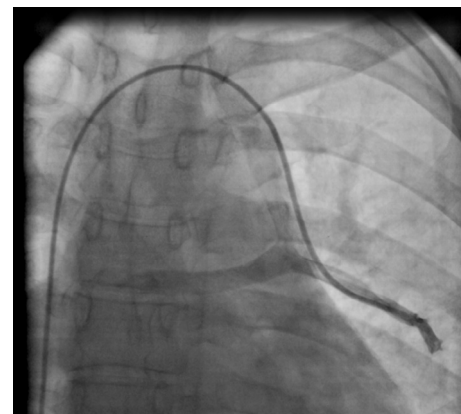


Fig. 4. Contrast injection in vertical vein showing connection of left upper pulmonary vein to left atrium.

to IVC via a Scimitar vein. Left sided PAPVCs generally connect to right side chambers via a vertical vein with flow towards innominate vein, SVC and RA.¹

PAPVCs are frequently associated with ASDs. In the majority of cases the ASD is of sinus venosus type which is believed to be due to embryonic developmental failure of the wall between the sinus venosus and the pulmonary veins.^{1,2} As a rule affected patients with significant left to right shunting are referred for surgical correction. However isolated dual supply vertical vein draining the left upper pulmonary vein are rarely present in these patient population and must be kept in mind while assessing PAPVCs; as the anomaly could be amenable to catheter intervention thus obviating the need for surgery.

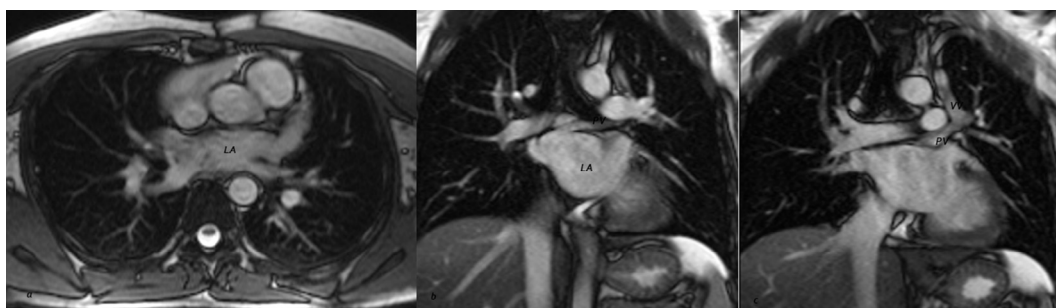


Fig. 2. Cardiac magnetic resonance images, (a) transverse image showing connection of all four PVs to LA, (b and c) Sequential images showing connection of left upper PV to LA and vertical vein (VV).

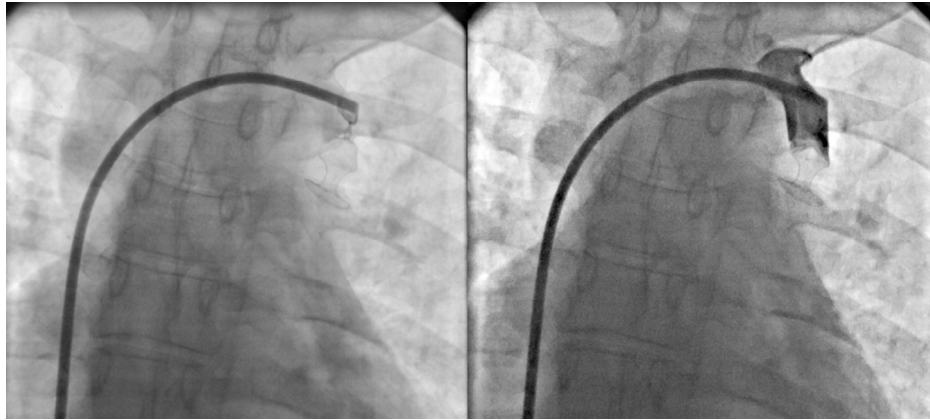


Fig. 5. VSD occluder device positioned in the duct with contrast injection showing no residue.

There are few reported cases of percutaneous obstruction of abnormal PAPVC flow in the literature. These cases included patients with dual drainage of pulmonary veins to IVC and left atrium via a Scimitar Vein or to SVC and LA via a vertical vein. Occlusion was accomplished by using coil or Amplatzer vascular plugs.^{3–6} We used a symmetric VSD occluder in our patient that based on the anatomy seemed to achieve complete occlusion. However no follow up study on this type of intervention exists. There is also no evidence on the risks of dislodgment, clot formation, thromboembolism and the need for antiplatelet drugs. We decided to administer dual antiplatelet therapy to our patient for a period of three to six months similar to transcatheter ASD/VSD closure procedures.

4. Conclusion

In conclusion, careful and comprehensive evaluation of every individual with unknown cause of right cardiac dilatation should be achieved in order to diagnose possible sources of anomalous venous drainage and to determine the optimal management strategy. Through delineation of anatomy may lead to successful treatment by transcatheter methods in selected cases rather than a routine surgical approach.

Conflict of interest

There are no conflicts of interest.

References

1. Wilson W, Horlick E, Benson L. Successful transcatheter occlusion of an anomalous pulmonary vein with dual drainage to the left atrium. *Catheter Cardiovasc Inter.* 2015;85:1212–1216.
2. Saedi S, Salehi A, Saedi T, Hashemi MJ. Association of left ventricular diverticula and sinus venosus atrial septal defect. *Congenit Heart Dis.* 2013;8:E145–E148.
3. Forbess LW, O'Laughlin MP, Harrison JK. Partial anomalous pulmonary venous connection Demonstration of dual drainage allowing non-surgical correction. *Catheter Cardiovasc Diagn.* 1998;44:330–335.
4. Kasarala G, Fiore A, Schowengerdt K, Jureidini S. Partial anomalous pulmonary venous return: transcatheter repair. *Paediatr Cardiol.* 2011;32:1238–1240.
5. Baspinar O, Irdem A, Kilinc M. Transcatheter repair of partial anomalous pulmonary venous drainage using an Amplatzer cardiac plug in a postoperative patient with Tetralogy of Fallot. *Pediatr Cardiol.* 2013;34:1043–1046.
6. Singh H, Luthra M, Bharadwaj P, Kumar R. Interventional rerouting of scimitar vein to left atrium using an Amplatzer vascular plug. *Congenital Heart Disease.* 2007;2:265–269.