



Biology of Blood and Marrow Transplantation

journal homepage: www.bbmt.org



Reviews

The Effect of Bone Marrow–Derived Mesenchymal Stem Cell Transplantation on Allodynia and Hyperalgesia in Neuropathic Animals: A Systematic Review with Meta-Analysis



Mostafa Hosseini¹, Mahmoud Youseffard², Heidar Aziznejad³, Farinaz Nasirinezhad^{4,*}

¹ Department of Epidemiology and Biostatistics, School of Public Health, Tehran University of Medical Sciences, Tehran, Iran

² Department of Physiology, School of Medicine, Tehran University of Medical Sciences, Tehran, Iran

³ The Persian Gulf Tropical Medicine Research Center, Bushehr University of Medical Sciences, Bushehr, Iran

⁴ Physiology Research Center, Department of Physiology, Iran University of Medical Sciences, Tehran, Iran

Article history:

Received 14 February 2015

Accepted 7 May 2015

Key Words:

Mesenchymal stromal cells

Neuropathic pain

Allodynia

Hyperalgesia

Meta-analysis

ABSTRACT

Stem cell transplantation has been considered a possible therapeutic method for neuropathic pain. However, no quantitative data synthesis of stem cell therapy for neuropathic pain exists. Therefore, the present systematic review and meta-analysis assessed the efficacy of bone marrow mesenchymal stem cell (BMMSC) transplantation on alleviating pain symptoms in animal models of neuropathic pain. In the present meta-analysis, controlled animal studies assessing the effect of administering BMMSC on neuropathic pain were included through an extensive literature search of online databases. After collecting data, effect sizes were computed and the standardized mean difference (SMD) with 95% confidence interval (CI) was entered in all analyses. Random-effects models were used for data analysis. Sensitivity and subgroup analyses were performed to investigate expected or measured heterogeneity. Finally, 14 study were included. The analyses showed that BMMSC transplantation lead to significant improvement on allodynia (SMD = 2.06; 95% CI, 1.09 to 3.03; $I^2 = 99.7\%$; $P < .001$). The type of neuropathy ($P = .036$), time between injury and intervention ($P = .02$), and the number of transplanted cells ($P = .023$) influence the improvement of allodynia after BMMSC transplantation. BMMSC transplantation has no effect on hyperalgesia (SMD = .3; 95% CI, -1.09 to 1.68; $I^2 = 100\%$; $P < .001$) unless it occurs during the first 4 days after injury ($P = .02$). The present systematic review with meta-analysis suggests that BMMSC transplantation improves allodynia but does not have any significant effect on hyperalgesia unless it is given during the first 4 days after injury.

© 2015 American Society for Blood and Marrow Transplantation.

INTRODUCTION

Neuropathic pain is defined as chronic pain resulting from a lesion or disease affecting the somatosensory system [1]. It can be triggered by central or peripheral nerve injury. The predominant symptoms are acute or sharp pain, impulsive pain, hyperalgesia, and allodynia. These symptoms may have continuous or episodic (paroxysmal) components [2].

Epidemiological evidence shows that the prevalence of neuropathic pain in general population is 3% to 17% [3]. Neuropathic pain leads to decreased quality of life, reduced personal functions, and undermined mental health and social relations. It is 1 of the most complicated pain conditions

to diagnosis and treat, and outcome is often poor [4,5]. Current treatment strategies only decrease 30% to 40% of the pain in less than 50% of the patients. Medications are aligned with some problems, such as side effects. New studies suggest that regenerative approaches based on cell therapy may be helpful in alleviating neuropathic pain symptoms [6-10].

In the last 2 decades, stem cell transplantation has been considered a possible therapeutic method for the spinal cord injury and neuropathic pain conditions [6,9-13]. Mesenchymal stem cells are the main source of cell therapy because of their ability of differentiating into multiple cell types, including blood, adipose tissue, connective tissues, osteocytes, chondrocytes, hepatocytes, myocytes, neurons, and cardiomyocytes [14-16]. Bone marrow mesenchymal stem cells (BMMSCs) can easily grow in vitro and exhibit intriguing immunomodulatory properties, nonteratogenicity, and multipotentiality with high genetic stability. They can also improve synaptic transmission and

Financial disclosure: See Acknowledgments on page 1543.

* Correspondence and reprint requests: Farinaz Nasirinezhad, Physiology Research Center, Department of Physiology, Iran University of Medical Sciences, Shahid Hemmat Highway, Tehran, Iran.

E-mail address: nasirinezhad.f@iums.ac.ir (F. Nasirinezhad).

<http://dx.doi.org/10.1016/j.bbmt.2015.05.008>

1083-8791/© 2015 American Society for Blood and Marrow Transplantation.

promote neuronal networks [17–21]. These properties make BMMSCs prime candidates for various therapeutic applications, especially for nervous system repair. In the context of neuropathic pain, transplantation of BMMSCs into the injured spinal cord reduced the progress of neuropathic pain [6,22–24].

Few clinical studies have been published regarding the use of BMMSCs for spinal cord injury. The findings of these studies have substantial diversity, ranging from improvement in symptoms to no significant improvement [25–32]. These studies have lacked a proper randomized control group and have been underpowered. However, a substantial number of controlled preclinical studies have investigated the effect of BMMSCs on neuropathic pain [6,22–24,33–41]. These studies revealed various degrees of improvement of neuropathic pain and symptoms, such as allodynia and hyperalgesia. Yet there is not a general conclusion about the effectiveness of stem cells in neuropathic pain. For this purpose, a meta-analysis of controlled studies could help estimate the effect of the intervention and, therefore, yield more powerful decision making. However, to our knowledge, no quantitative data synthesis of stem cell therapy for neuropathic pain exists. Therefore, the present systematic review and meta-analysis assessed the efficacy of BMMSCs transplantation on alleviating pain, allodynia, and hyperalgesia in animal models of peripheral or central neuropathic pain.

METHODS

Search Strategy

The study was conducted according to Meta-analysis of Data from Animal Studies Guidelines [42,43], providing a detailed guideline of preferred reporting for systematic reviews and meta-analyses. Relevant articles were identified through a literature search of online databases (PubMed, SCOPUS, Embase, Cochrane, and CINAHL) without publication date and language limitations. The initial search was broad and included the following words: (1) PubMed term: (“mesenchymal stem cells” OR “mesenchymal stromal cells” OR “mesenchymal stem cell” OR “mesenchymal stromal cell” OR “marrow stromal cell” OR “bone marrow stem cell” OR “bone marrow-derived stromal cell” OR “mesenchymal precursor cell” OR “MSCs” OR “MSC” OR “BMSCs” OR “BMSC”) AND (“spinal cord injuries” OR “spinal” OR “spinal cord injury” OR “spinal cord contusion” OR “spinal cord transection” OR “injured spinal cord” OR “pain” OR “pain” OR “neuropathic pain” OR “allodynia” OR “hyperalgesia” OR “hypersensitivity”); and (2) In EMBASE: (mesenchymal stem cells.mp. OR mesenchymal stem cell/OR mesenchymal stromal cells.mp. OR mesenchymal stroma cell/OR bone marrow stromal cells.mp.) AND (spinal cord injury.mp. OR spinal cord injury/OR pain.mp. OR pain.mp. OR neuropathic pain.mp. OR allodynia.mp. OR hyperalgesia.mp. OR hypersensitivity.mp.). In addition, we ran a hand search in the reference lists of all relevant articles and previous review articles to find additional studies. We also attempted to contact the authors of all the studies that met the inclusion criteria and we requested unpublished data and abstracts.

Study Selection and Definitions

In the present meta-analysis, the controlled studies assessing the administration of BMMSCs to rat or mouse models of neuropathic pain were included. Peripheral and central models of neuropathic pain induced by contusion, compression, transection, and ligation were studied. Original research studies about the influence of BMMSC transplantation, regardless of donor species or tissue origin, were included. Outcomes measured were the evaluation of allodynia [44] and hyperalgesia [45]. Control interventions consisted of placebo (saline, culture medium, or similar vehicle) or no treatment. Any manipulation of BMMSCs into neuron-like cells, coculture concomitant injection with other cell types, or use of adjuvant products (eg, matrices, scaffolding), and diabetic neuropathy lead to exclusion. In addition, review articles, commentaries, editorials, and letters were excluded.

Two authors (M.Y, H.A) independently appraised all potentially included studies. Any disagreement was resolved using the viewpoint of a third author (F.N). We included all the experimental studies regarding animals in any age, gender, or strain exposed to neuropathic pain induced by contusion, compression, transection, and ligation. Those that had poor quality were excluded.

Table 1
Characteristics of Studies Using Bone Marrow Stem Cells in Treatment of Neuropathic Pain

Author and Year	Sample Size	Method		Model/Intervention	Dose/Graft Type	Observation Time
		Species/Weight				
Neuhuber 2005	28 BMMSC/7 vehicle	Female Sprague-Dawley rats/225–250 g		Hemi-section/spinal cord delivery 2 wk after SCI in injury site	2×10^5 cell/xenogeneic	8 wk
Vaquero 2006	20 BMMSC/10 vehicle	Female adult Wistar rats/250–300 g		Contusion/spinal cord delivery 3 mo after SCI in T6–T8 level	3×10^6 cell/allogeneic	26 wk
Urdzikova 2006	15 BMMSC/15 vehicle	Male Wistar rats/300–330 g		Compression/intravenously 1 wk after injury	2×10^6 cell/allogeneic	4 wk
Lee 2007	8 BMMSC/8 vehicle	Male Sprague-Dawley rats/300–350 g		Contusion/spinal cord delivery 1 wk after SCI in T9 level	1×10^5 cell/xenogeneic	8 wk
Klass 2007	12 BMMSC/11 vehicle	Male Sprague-Dawley rats/250–300 g		CCI/intravenously immediately after injury	1×10^7 cell/allogeneic	10 days
Musolino 2007	8 BMMSC/8 vehicle	Male Sprague-Dawley rats/200–300 g		SNL/dorsal root ganglia immediately after injury	2×10^5 cell/allogeneic	8 wk
Anemort 2010	23 BMMSC/23 SCI	Male Wistar rat/270–300 g		Compression/spinal cord delivery 1 wk after SCI in T8 level	3×10^5 cell/allogeneic	8 wk
Guo 2011	16 BMMSC/11 vehicle	Male Sprague-Dawley rats/225–250 g		CCI-ION/injury site delivery 3 d after CCI	1.5×10^6 cell/allogeneic	22 wk
Siniscalco 2011	18 BMMSC/18 vehicle	Male CD-1 mice/35–40 g		SNL/fail vein delivery 4 d after injury	2×10^6 cell/xenogeneic	13 wk
Kumagai 2013	12 BMMSC/12 vehicle	female Fischer rats/180–200 g		Contusion/spinal cord delivery 1 wk after SCI in T8 level	4×10^5 cell/allogeneic	6 wk
Schäfer 2014	11 BMMSC/9 vehicle	Female Sprague-Dawley rats/225–250 g		partial SNL/spinal cord delivery 2 d after injury in injury site	3×10^6 cell/allogeneic	3 wk
Torres-Espin 2014	15 BMMSC/15 SCI	Female Sprague-Dawley rats/250–300 g		Contusion/spinal cord delivery 1 wk (n = 7) after SCI in T8 level	4.5×10^5 cell/allogeneic	6 wk
Zhang 2014	10 BMMSC/10 vehicle	Male Sprague-Dawley rats/180–200 g		SNL/intrathecal delivery 1 wk after SNL in L5–L6 level	1×10^5 cell/allogeneic	17 d
Yousefiard 2014	10 BMMSC/10 vehicle	Male Wistar rats/140–160 g		Compression/spinal cord delivery 1 wk after SCI in T6–T8 level	1×10^6 cell/allogeneic	8 wk

SCI indicates spinal cord injury; CCI, chronic constriction injury; SNL, single ligation nerve constriction; ION, infraorbital nerve; SNL, spinal nerve ligation.

Quality Assessment

Two reviewers (M.Y, H.A) independently evaluated each study and allocated them a quality rating of “good,” “fair,” or “poor.” Quality assessment was conducted to evaluate the impact of methodological quality on the reported outcomes, accounting for study design and presence of bias, including performance, recording, and reporting bias. In this regard, adequacy of randomization and concealment of allocation, blinding of study personnel and outcome assessors, and registered sample size estimations or power calculations were assessed (inter-rater reliability was 91%). Disagreements were discussed with a third reviewer (F.N).

Data Synthesis

The following data were collected and recorded: recipient animal (species, strain, sex, weight), type of neuropathy (contusion, compression, transection, and ligation), type of graft (autologous, syngeneic, allogeneic, or xenogeneic), intervention regimen (time from inducing the neuropathic pain to cell transplantation, delivery route, number of injections, and total number of transplanted cells), immunosuppressive usage, methodological quality, observation (follow-up) time, and main findings.

Statistical Analysis

Statistical analysis was performed using Stata software, version 12.0 (Stata Corp, College Station, TX). Effect sizes were computed and the standardized mean difference (SMD) with 95% confidence interval (CI) was entered in all analyses using Hedges' *g*. By calculating the effect size, pooling the findings and modifying the bias caused by small sample size were possible [43,46]. The authors were contacted if mean values and standard deviations (SD) were not reported. In case of no response, an estimation method was used for the calculation of mean values and SD [47,48]. If the information was reported as graphs, data were extracted from the graphs using the method recommended by Siström and Mergo [48]. If the therapeutic effect of different numbers of cells in therapy was reported, the highest number was included in the analysis. In addition, the mean and SD of the latest time of follow-up period of included studies were used.

Based on the experimental diversity between the studies, random-effects models or fixed-effects models were used for data analysis. Random-effects models were used in the presence of heterogeneity, and in the absence of heterogeneity, fixed-effects models were used. Statistical heterogeneity was measured using the I^2 and chi-square tests. In this regard, $P < .10$ was the representative of significant statistical heterogeneity [49]. Sensitivity and subgroup analyses were performed to investigate expected or measured heterogeneity and applied based on a multivariate meta-regression model. All possible causes of heterogeneity including the animal gender (male/female), type of neuropathy (central or peripheral nervous system), delivery route (spinal, intravenous, and dorsal root ganglia), graft type (xenogeneic, allogeneic), time between injury and intervention (equal and fewer than 4 days/more than 4 days), number of transplanted cells (less than 3×10^6 cell dose/kg and more than or equal to 3×10^6 cell dose/kg), and follow-up period (fewer than 8 weeks and equal to or more than 8 weeks) were included as covariates in the meta-regression model. Publication bias was assessed using funnel plots and formal Egger's and Begg's tests [50]. A 2-sided P value $< .05$ was considered statistically significant.

RESULTS

We found 2158 nonduplicate articles using the search strategies described earlier. Of these, 136 potentially relevant papers were screened. Finally, 13 full-text articles were included for the meta-analysis and were studied in detail [6,22–24,33–41] (Table 1). In addition, 1 eligible unpublished set of data, which were obtained from an experiment in our lab, were included in the analysis (unpublished data, F. Nasirinezhad, July 2015). In this study Mean (standard deviation) of heat hyperalgesia in BMMSCs treated and control groups were 20.2 (6.8) seconds and 9.7 (3.1) seconds, respectively (10 rats per each groups). In addition, these

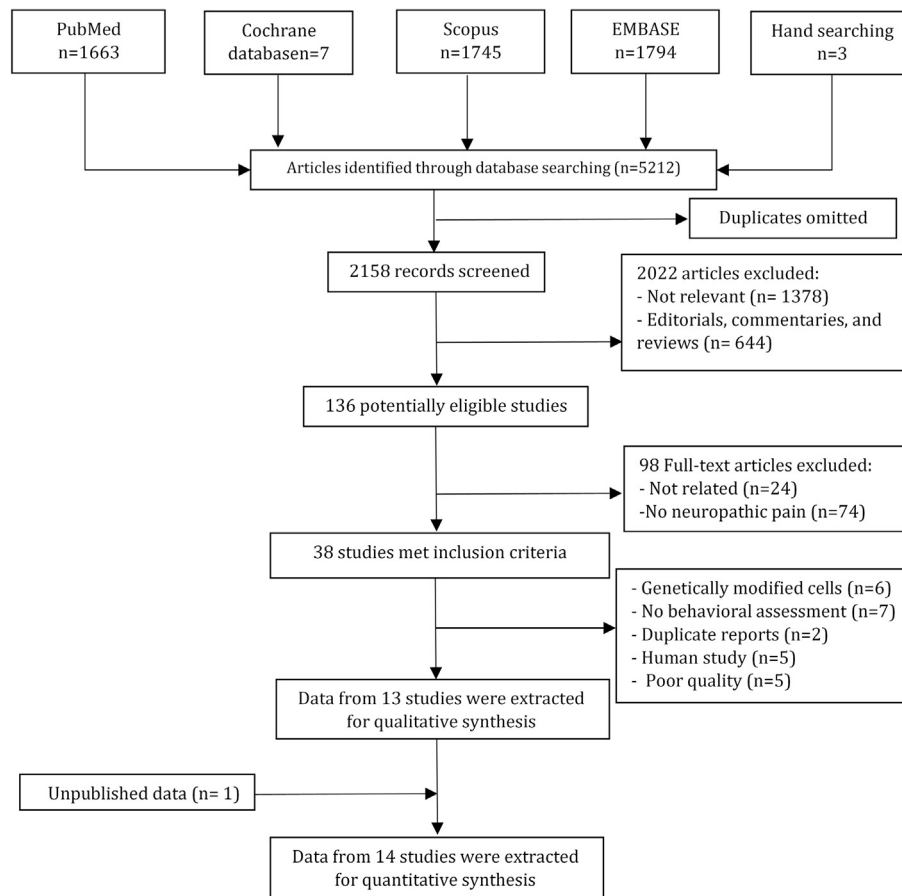


Figure 1. Flow chart of the study.

values for mechanical allodynia were 13.2 (2.27) grams and 7.1 (2.7) grams, respectively. The flow of information from identification to inclusion of studies is summarized in Figure 1. These citations contained a total of 373 rats/mice including 206 BMMSC-treated animals and 167 controls. Of the 14 articles, 4 reported only the impact of BMMSCs transplantation on hyperalgesia [22,35,39,40] and 4 assessed its effect on allodynia [23,33,34,41]. Six articles evaluated the effect on both [6,24,36–38].

Heterogeneity and Publication Bias

According to the result of subgroup analysis of the therapeutic effect of BMMSCs, a significant statistical heterogeneity was found on neuropathic pain, except regarding delivery route ($I^2 = .0\%$; $P = .74$). Therefore, in this case a fixed-effects model was used, whereas other analyses were performed using a random-effects model. No publication bias was observed among the included studies (Tables 2 and 3). In addition, we were not able to calculate the pooled-effect size in xenogeneic graft of BMMSCs because eligible related studies were few (2 studies).

Meta-Analysis

The main outcome measure was the assessment of hyperalgesia and allodynia. According to our analysis, using the random-effects model, BMMSC transplantation leads to a statistically significant improvement on allodynia (SMD = 2.06; 95% CI, 1.09 to 3.03; $I^2 = 99.7\%$; $P < .001$) but does not have a significant effect on hyperalgesia (SMD = .3; 95% CI, -1.09 to 1.68; $I^2 = 100\%$; $P < .001$) (Figures 2 and 3).

Subgroup Analyses

Subgroup analyses were performed based on animal gender, type of neuropathy, randomization, blinding of observer, stem cell delivery route, xenogeneic or allogeneic transplantation, use of immunosuppressive agents, time between injury and intervention, number of transplanted cells, and follow-up periods.

Allodynia

Table 2 presents the subgroup analysis of allodynia. Multivariate meta-regression showed that the type of neuropathy ($P = .036$), time between injury and intervention

Table 2
Subgroup Analyses of the Effect of BMMSC on Mechanical Allodynia

Characteristic	<i>P</i> for Bias*	Model	<i>P</i> (I^2)†	Effect Size‡ (95% CI)	<i>P</i>
Gender					
Male	.34	REM	<.001 (99.3%)	2.45 (1.69–3.2)	<.001
Female	.19	REM	<.001 (99.6%)	1.16 (–.58–2.90)	.19
Overall significance test among subgroups					.49
Type of neuropathy					
Central	.45	REM	<.001 (96.1%)	1.0 (.28–1.71)	.006
Peripheral	.73	REM	<.001 (99.7%)	2.06 (1.09–3.03)	<.001
Overall significance test among subgroups					.036
Randomization					
No	.33	REM	<.001 (99.8%)	2.05 (.74–3.35)	.002
Yes	.76	REM	<.001 (89.7%)	2.36 (1.44–3.17)	<.001
Overall significance test among subgroups					.17
Blinding the outcome assessment					
No	.49	REM	<.001 (99.8%)	1.82 (–.10–3.73)	.06
Yes	.64	REM	<.001 (99.4%)	2.26 (1.33–3.19)	<.001
Overall significance test among subgroups					.37
Delivery route					
Spinal	.14	REM	<.001 (99.0%)	1.32 (.35–2.28)	.007
Intravenous	.23	REM	<.001 (99.4%)	3.53 (2.59–4.47)	<.001
DRG	.65	FEM	.74 (.0%)	3.02 (2.92–3.12)	<.001
Overall significance test among subgroups					.255
Graft type					
Xenogeneic	.32	REM	<.001 (99.9%)	2.33 (–.98–5.63)	.17
Allogeneic	.61	REM	<.001 (99.7%)	1.99 (.96–3.02)	<.001
Overall significance test among subgroups					.99
Use of immunosuppressive agents					
No	NA	NA	NA	NA	NA
Yes	.73	REM	<.001 (99.7%)	2.23 (1.22–3.25)	<.001
Overall significance test among subgroups					NA
Time between injury and intervention§					
Less than 4 d	.28	REM	<.001 (98.9%)	3.1 (2.53–3.68)	<.001
More than 4 d	.13	REM	<.001 (95.6%)	1.08 (.44–1.72)	.001
Overall significance test among subgroups					.02
Number of transplanted cells					
Less than 3×10^6 cell dose/kg	.33	REM	<.001 (86.9%)	.81 (.35–1.26)	<.001
More than or equal to 3×10^6 cell dose/kg	.52	REM	<.001 (98.9%)	2.98 (2.43–3.54)	<.001
Overall significance test among subgroups					.023
Follow-up period					
Less than 8 wk	.19	REM	<.001 (99.7%)	1.6 (.14–3.06)	<.001
More than or equal to 8 wk	.73	REM	<.001 (99.5%)	2.54 (1.41–3.66)	<.001
Overall significance test among subgroups					.72

REM indicates random-effect model; FEM, fixed-effect model; DRG, dorsal root ganglia; NA, not applicable.

* Publication bias based on Begg's and Egger's test.

† Heterogeneity among studies.

‡ Standardized mean difference.

§ Categorization was done based on median of time between injury and intervention in included studies.

Table 3
Subgroup Analyses of the Effect BMMSC on Heat Hyperalgesia

Characteristic	P for Bias*	Model	P (I ²) [†]	Effect Size [‡] (95% CI)	P
Gender					
Male	.37	REM	<.001 (99.8%)	1.24 (−.74–3.22)	.22
Female	.78	REM	<.001 (99.9%)	.64 (−2.87–1.60)	.58
Overall significance test among subgroups					.90
Randomization					
No	.29	REM	<.001 (10.0%)	−.005 (−2.12–1.10)	.99
Yes	.70	REM	<.001 (97.9%)	.78 (−1.27–2.82)	.45
Overall significance test among subgroups					.86
Blinding the outcome assessment					
No	.53	REM	<.001 (100.0%)	−.61 (−3.62–2.41)	.69
Yes	.80	REM	<.001 (99.9%)	1.22 (−1.05–3.49)	.29
Overall significance test among subgroups					.37
Type of neuropathy					
Central	.44	REM	<.001 (99.8%)	−.72 (−2.78–1.35)	.50
Peripheral	.49	REM	<.001 (99.7%)	2.65 (.68–4.61)	.008
Overall significance test among subgroups					.722
Delivery route					
Spinal	.20	REM	<.001 (99.9%)	−.4 (−2.23–1.42)	.66
Intravenous	.49	REM	<.001 (99.8%)	1.96 (.04–3.95)	.054
Overall significance test among subgroups					.765
Graft type [§]					
Xenogeneic	NA	NA	NA	NA	NA
Allogeneic	.79	REM	<.001 (99.9%)	−.22 (−1.63–1.20)	.77
Overall significance test among subgroups					NA
Use of immunosuppressive agents					
No	.69	REM	.01 (83.0%)	−.78 (−2.1–.56)	.25
Yes	.88	REM	<.001 (99.9%)	.57 (−.98–2.10)	.47
Overall significance test among subgroups					.79
Time between injury and intervention ^d					
Less than 4 d	.11	REM	<.001 (99.9%)	2.65 (.68–4.61)	.008
More than 4 d	.13	REM	<.001 (99.8%)	−.72 (−2.78–1.35)	.50
Overall significance test among subgroups					.022
Number of transplanted cells					
Less than 3 × 10 ⁶ cell dose/kg	.12	REM	<.001 (98.2%)	−.31 (−1.54–.91)	.62
More than or equal to 3 × 10 ⁶ cell dose/kg	.80	REM	<.001 (100.0%)	.69 (−1.28–2.66)	.49
Overall significance test among subgroups					.99
Follow-up period					
Less than 8 wk	.11	REM	<.001 (98.2%)	.16 (−4.56–4.88)	.30
More than or equal to 8 wk	.59	REM	<.001 (99.8%)	.50 (−.44–1.44)	.95
Overall significance test among subgroups					.99

* Publication bias based on Begg's and Egger's test.

† Heterogeneity among studies.

‡ Standardized mean difference.

§ Categorization was done based on median of time between injury and intervention in included studies.

($P = .02$), and the number of transplanted cells ($P = .023$) influence the improvement of allodynia after BMMSC transplantation. The effect sizes of BMMSC transplantation on central and peripheral neuropathy were 1.0 (95% CI, .28 to 1.71) and 1.16 (95% CI, 1.09 to 3.03), respectively. The analysis showed that the effect of BMMSC transplantation on allodynia was greater in the peripheral model ($P = .036$). Time between injury and intervention were categorized based on 4 days. Subgroup analysis showed that stem cell therapy during first 4 days (effect size = 3.1; 95% CI, 2.53 to 3.68) is more effective than after 4 days (effect size = 1.08; 95% CI, .44 to 1.72) ($P = .02$). In addition, multivariate meta-regression depicts stem cell therapy with a dose of more than or equal to 3 × 10⁶ cell dose/kg (effect size = 2.98; 95% CI, 2.43 to 3.54) is more effective than cell therapy with dose of less than 3 × 10⁶ cell dose/kg (effect size = 2.98; 95% CI, 2.43 to 3.54) ($P = .023$).

Hyperalgesia

Multivariate meta-regression showed that cell therapy correlated with more improvement in hyperalgesia if it occurred during first 4 days after injury ($P = .02$). Stem cell therapy during first 4 days (effect size = 2.65; 95% CI, .68 to 4.61) is more effective than after 4 days (effect size = −.72;

95% CI, 2.78 to 1.35) ($P = .02$). Table 3 presents the subgroup analysis of the effect of stem cell therapy on hyperalgesia.

DISCUSSION

Meta-analyses of animal studies provide practical evidence for researchers regarding advantages and side effects of an intervention to help them decide to proceed with clinical trials or not. Based on our knowledge, the present study is the first quantitative meta-analytic approach to review all of the available evidence regarding the efficacy of BMMSCs in improving neuropathic pain. The analyses showed that BMMSC transplantation leads to a statistically significant improvement on allodynia but does not have a significant effect on hyperalgesia. We found significant diversity between the studies. Therefore, subgroup analysis was performed to assess possible sources of the heterogeneity. Based on this analysis, type of neuropathy (central or peripheral), time from injury to intervention, and the number of transplanted cells were the most important causes of the heterogeneity. In addition, among 14 included articles, 1 paper assessed the stem cell therapy in a mouse model [37]. Subgroup analysis was not performed based on animal species because of the small number of included studies. However, in the mentioned study, there was the strongest effect

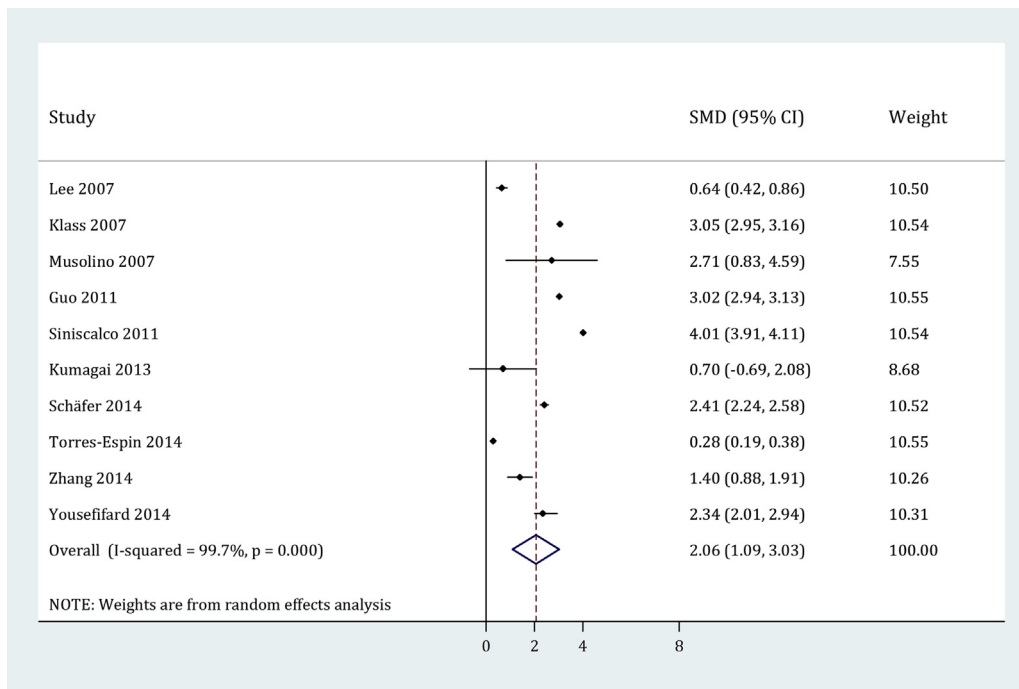


Figure 2. The effect of BMMSC transplantation on mechanical allodynia.

seen on allodynia and hyperalgesia. Therefore, there may be a species difference between rat and mouse. Further studies are required to confirm this hypothesis.

Currently, there are 2 experimental animal models of neuropathic pain, including peripheral and central models [51-53]. Subgroup analysis showed that BMMSC transplantation leads to more improvement in allodynia induced in the peripheral model compared with in the

central model. This finding is partly due to the different mechanism of neuropathic pain in the central and peripheral models. In peripheral models, altered ion channel expression triggers enhanced membrane resonance, rhythmogenesis, and ectopic spiking with increased cellular excitability, which are the most important mechanisms of inducing the neuropathic pain. Sprouting of myelinated nerve fibers into lamina II, increased glutamate release, evoking fast

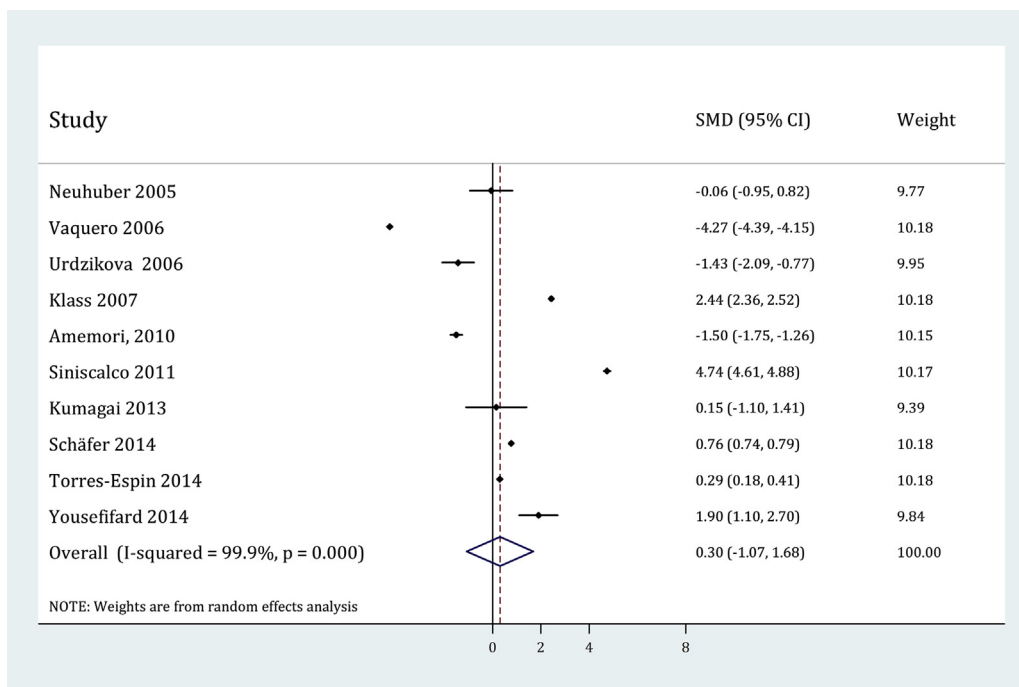


Figure 3. The effect of BMMSC transplantation on heat hyperalgesia.

excitatory synaptic potentials, expression of brain-derived neurotrophic factor and substance P, neuroplasticity changes in central pain descending regulatory systems, and astrocytes and glial cell activation are the most important mechanisms in central models. BMMSC transplantation provides a protective effect for the host cells. Efficacy of this supportive role may be greater in reversing the pathophysiological changes in the peripheral model [54–56].

The development of secondary spinal cord damage sets in the early minutes after injury and continues for weeks or months. The mechanisms involved in secondary spinal cord damage consist of apoptosis, astroglial scar launch, central cavitation, central chromatolysis, compression and vertebral column instability, deficient expression of myelin associated genes after spinal cord injury, demyelination of residual axons, derangements in ionic homeostasis, glutamatergic excitotoxicity, immune cells invasion and release of cytokines, inflammation, and ischemia/reperfusion-induced endothelial damage, etc. [57]. BMMSCs have immunomodulatory properties [18,58–60] and, when administered at the right time, may help in minimizing neural inflammation and immune-mediated injuries. Early cell therapy might decrease proliferation or hypertrophy of glial cells (gliosis) and enhance recovery by bioactive molecules, modulation of cytokine production, and growth factors. Also, the angiogenic effect of these cells may help the revascularization of spinal cord [61,62]. In this regard, our findings also showed that onset of stem cell therapy during the first days after injury (fewer than 4 days) causes more improvement in allodynia and hyperalgesia. Accordingly, it seems rational to suggest that the optimal time point for transplantation is fewer than 4 days after the lesion. A similar result was reported in another systematic review, which stated that the optimal time point for transplantation of stem cells in spinal cord injury is 3 days after the lesion for intrathecal site and 5 to 7 days for intrathecal injection [63].

Median stem cell transplantation dose in the eligible studies was 2.25×10^6 cells/kg. We categorized the number of transplanted cells into 2 groups (based on 3×10^6 cell dose/kg). This cut point was selected because it is near the typical number of transplanted cells currently administered in clinical trials (1 to 3×10^6 cell dose/kg) [29,64,65]. Our result demonstrated that stem cell therapy in doses of 3×10^6 or higher is associated with greater improvement in allodynia. The correlation between the number of transplanted cells and recovery after spinal cord injury was reported in 2 studies. The studies demonstrated a dose-dependent influence of BMMSCs on recovery after spinal cord injury [66,67]. BMMSCs display immunosuppressive properties in a dose-dependent manner [58,68]. Subsequently, the development of secondary damage was reduced and survival rate of transplanted cells increased.

Strengths and Limitations

In the present study, 3 points have improved the quality of our meta-analysis. First, we assessed both central and peripheral models of neuropathic pain. Second, we calculated SMDs as the effect size estimate using Hedges' *g* to compare across articles and to correct for bias caused by small sample size. Third, subgroup analysis was performed stratified by animal gender, type of neuropathy, delivery route, graft type, time between injury and intervention, number of transplanted cells, and follow-up period, because heterogeneity is expected in most meta-analyses. In addition, we conducted an extensive search and used a

comprehensive analytical approach that allowed the inclusion of studies presenting not only means and SD, but also other values, such as medians, thus improving the exhaustiveness of the results.

Our review and meta-analysis have a number of limitations. First, some of the original studies did not describe the blinding status of the observer. Moreover, residual confounding (confounding from unknown variables), as in meta-analyses, may introduce considerable bias, and the direction of this bias is unpredictable. Second, the possible source of heterogeneity between the studies was not clear. Therefore, it was decided to use a random-effects model, which gave more conservative results. In addition, we ran a meta-regression and stratified meta-analysis by partitioning of heterogeneity.

CONCLUSION

The present systematic review with meta-analysis seem to suggest that BMMSC transplantation improved allodynia but had no significant effect on hyperalgesia. The effectiveness of BMMSCs on neuropathic pain is higher if they are transplanted for peripheral pain, in fewer than 4 days, and in a dose of equal to or more than 3×10^6 cells per kg.

ACKNOWLEDGMENTS

Financial disclosure statement: This research has been supported by a Tehran University of Medical Sciences and Health Services grant (grant number: 93-03-27-27180).

Conflict of interest statement: There are no conflicts of interest to report.

REFERENCES

- Jensen TS, Baron R, Haanpää M, et al. A new definition of neuropathic pain. *Pain*. 2011;152:2204–2205.
- Nurcan AA, Sommer C. Neuropathic pain assessment: an overview of existing guidelines and discussion points for the future. *Eur Neurol Rev*. 2011;6:128–131.
- Van Hecke O, Austin SK, Khan RA, et al. Neuropathic pain in the general population: a systematic review of epidemiological studies. *Pain*. 2014;155:654–662.
- Bennett MI, Smith BH, Torrance N, Lee AJ. Can pain be more or less neuropathic? Comparison of symptom assessment tools with ratings of certainty by clinicians. *Pain*. 2006;122:289–294.
- Dieleman JP, Kerklaan J, Huygen FJ, et al. Incidence rates and treatment of neuropathic pain conditions in the general population. *Pain*. 2008;137:681–688.
- Klass M, Gavrikov V, Drury D, et al. Intravenous mononuclear marrow cells reverse neuropathic pain from experimental mononeuropathy. *Anesth Analg*. 2007;104:944–948.
- Klein S, Svendsen CN. Stem cells in the injured spinal cord: reducing the pain and increasing the gain. *Nat Neurosci*. 2005;8:259–260.
- Jergova S, Hentall ID, Gajavelli S, et al. Intraspinal transplantation of GABAergic neural progenitors attenuates neuropathic pain in rats: a pharmacologic and neurophysiological evaluation. *Exp Neurol*. 2012;234:39–49.
- Borsani E, Franchi S, Rossi A, et al. Stem cell transplantation in neuropathic pain. *Ital J Anat Embryol*. 2011;116:31.
- Lin CR, Wu PC, Shih HC, et al. Intrathecal spinal progenitor cell transplantation for the treatment of neuropathic pain. *Cell Transplant*. 2002;11:17–24.
- Eaton M, Plunkett J, Martinez M, et al. Transplants of neuronal cells bioengineered to synthesize GABA alleviate chronic neuropathic pain. *Cell Transplant*. 1999;8:87.
- Liang Y, Jiang W, Zhang Z, et al. Behavioral and morphological evidence for the involvement of glial cells in the antinociceptive effect of naja-nalgesin in a rat neuropathic pain model. *Biol Pharm Bull*. 2012;35:850–854.
- Pirhajati Mahabadi V, Tirah T, Khalatbary A. Central neuropathic pain after graft of bone marrow stromal cells in the spinal cord contusion of rat. *J Iran Anatomic Sci*. 2007;5:93–105.
- Klopp AH, Gupta A, Spaeth E, et al. Concise review: dissecting a discrepancy in the literature: do mesenchymal stem cells support or suppress tumor growth? *Stem Cells*. 2011;29:11–19.
- Pittenger MF, Mackay AM, Beck SC, et al. Multilineage potential of adult human mesenchymal stem cells. *Science*. 1999;284:143–147.

16. Anjos-Afonso F, Siapati EK, Bonnet D. In vivo contribution of murine mesenchymal stem cells into multiple cell-types under minimal damage conditions. *J Cell Sci*. 2004;117:5655–5664.
17. Wakitani S, Imoto K, Yamamoto T, et al. Human autologous culture expanded bone marrow mesenchymal cell transplantation for repair of cartilage defects in osteoarthritic knees. *Osteoarthritis Cartilage*. 2002;10:199–206.
18. Nauta AJ, Fibbe WE. Immunomodulatory properties of mesenchymal stromal cells. *Blood*. 2007;110:3499–3506.
19. Puissant B, Barreau C, Bourin P, et al. Immunomodulatory effect of human adipose tissue-derived adult stem cells: comparison with bone marrow mesenchymal stem cells. *Br J Haematol*. 2005;129:118–129.
20. Bae JS, Han HS, Youn DH, et al. Bone marrow-derived mesenchymal stem cells promote neuronal networks with functional synaptic transmission after transplantation into mice with neurodegeneration. *Stem Cells*. 2007;25:1307–1316.
21. Cho KJ, Trzaska KA, Greco SJ, et al. Neurons derived from human mesenchymal stem cells show synaptic transmission and can be induced to produce the neurotransmitter substance P by interleukin-1 α . *Stem Cells*. 2005;23:383–391.
22. Amemori T, Jendelová P, Ruzicková K, et al. Co-transplantation of olfactory ensheathing glia and mesenchymal stromal cells does not have synergistic effects after spinal cord injury in the rat. *Cytotherapy*. 2010;12:212–225.
23. Guo W, Wang H, Zou S, et al. Bone marrow stromal cells produce long-term pain relief in rat models of persistent pain. *Stem Cells*. 2011;29:1294–1303.
24. Kumagai G, Tsoulfas P, Toh S, et al. Genetically modified mesenchymal stem cells (MSCs) promote axonal regeneration and prevent hypersensitivity after spinal cord injury. *Exp Neurol*. 2013;248:369–380.
25. Kishk NA, Gabr H, Hamdy S, et al. Case control series of intrathecal autologous bone marrow mesenchymal stem cell therapy for chronic spinal cord injury. *Neurorehabil Neural Repair*. 2010;24:702–708.
26. Ichim TE, Solano F, Lara F, et al. Feasibility of combination allogeneic stem cell therapy for spinal cord injury: a case report. *Int Arch Med*. 2010;3:30.
27. Syková E, Homola A, Mazanec R, et al. Autologous bone marrow transplantation in patients with subacute and chronic spinal cord injury. *Cell Transplant*. 2006;15:675–687.
28. Geffner L, Santacruz P, Izurieta M, et al. Administration of autologous bone marrow stem cells into spinal cord injury patients via multiple routes is safe and improves their quality of life: comprehensive case studies. *Cell Transplant*. 2008;17:1277–1293.
29. Kumar AA, Kumar SR, Narayanan R, et al. Autologous bone marrow derived mononuclear cell therapy for spinal cord injury: a phase I/II clinical safety and primary efficacy data. *Exp Clin Transplant*. 2009;7:241–248.
30. Pal R, Venkataramana NK, Bansal A, et al. Ex vivo expanded autologous bone marrow-derived mesenchymal stromal cells in human spinal cord injury/paraplegia: a pilot clinical study. *Cytotherapy*. 2009;11:897–911.
31. Moviglia G, Varela G, Gaeta C, et al. Autoreactive T cells induce in vitro BM mesenchymal stem cell transdifferentiation to neural stem cells. *Cytotherapy*. 2006;8:196–201.
32. Fawcett J, Curt A, Steeves J, et al. Guidelines for the conduct of clinical trials for spinal cord injury as developed by the ICCP panel: spontaneous recovery after spinal cord injury and statistical power needed for therapeutic clinical trials. *Spinal Cord*. 2006;45:190–205.
33. Lee KH, Suh-Kim H, Choi JS, et al. Human mesenchymal stem cell transplantation promotes functional recovery following acute spinal cord injury in rats. *Acta Neurobiol Exp (Wars)*. 2007;67:13–22.
34. Musolino PL, Coronel MF, Hökfelt T, Villar MJ. Bone marrow stromal cells induce changes in pain behavior after sciatic nerve constriction. *Neurosci Lett*. 2007;418:97–101.
35. Neuhuber B, Timothy Himes B, Shumsky JS, et al. Axon growth and recovery of function supported by human bone marrow stromal cells in the injured spinal cord exhibit donor variations. *Brain Res*. 2005;1035:73–85.
36. Schäfer S, Berger JV, Deumens R, et al. Influence of intrathecal delivery of bone marrow-derived mesenchymal stem cells on spinal inflammation and pain hypersensitivity in a rat model of peripheral nerve injury. *J Neuroinflammation*. 2014;11:157.
37. Siniscalco D, Giordano C, Galderisi U, et al. Long-lasting effects of human mesenchymal stem cell systemic administration on pain-like behaviors, cellular, and biomolecular modifications in neuropathic mice. *Front Integr Neurosci*. 2011;5:79.
38. Torres-Espín A, Redondo-Castro E, Hernández J, Navarro X. Bone marrow mesenchymal stromal cells and olfactory ensheathing cells transplantation after spinal cord injury—a morphological and functional comparison in rats. *Eur J Neurosci*. 2014;39:1704–1717.
39. Urdzíkova L, Jendelová P, Glogarová K, et al. Transplantation of bone marrow stem cells as well as mobilization by granulocyte-colony stimulating factor promotes recovery after spinal cord injury in rats. *J Neurotrauma*. 2006;23:1379–1391.
40. Vaquero J, Zurita M, Oya S, Santos M. Cell therapy using bone marrow stromal cells in chronic paraplegic rats: systemic or local administration? *Neurosci Lett*. 2006;398:129–134.
41. Zhang EJ, Song CH, Ko YK, Lee WH. Intrathecal administration of mesenchymal stem cells reduces the reactive oxygen species and pain behavior in neuropathic rats. *Korean J Pain*. 2014;27:239–245.
42. Vesterinen HM, Sena ES, Egan KJ, et al. Meta-analysis of data from animal studies: a practical guide. *J Neurosci Methods*. 2014;221:92–102.
43. Sena ES, Currie GL, McCann SK, et al. Systematic reviews and meta-analysis of preclinical studies: why perform them and how to appraise them critically. *J Cereb Blood Flow Metab*. 2014;34:737–742.
44. Chaplan S, Bach F, Pogrel J, et al. Quantitative assessment of tactile allodynia in the rat paw. *J Neurosci Methods*. 1994;53:55–63.
45. Montagne-Clavel J, Oliveras J-L. The “plantar test” apparatus (Ugo Basile Biological Apparatus), a controlled infrared noxious radiant heat stimulus for precise withdrawal latency measurement in the rat, as a tool for humans? *Somatosen Mot Res*. 1996;13:215–223.
46. Higgins JP, Green S. *Cochrane handbook for systematic reviews of interventions*. Chichester: Wiley Online Library; 2008.
47. Hozo SP, Djulbegovic B, Hozo I. Estimating the mean and variance from the median, range, and the size of a sample. *BMC Med Res Methodol*. 2005;5:13.
48. Sstrom CL, Mergo PJ. A simple method for obtaining original data from published graphs and plots. *Am J Roentgenol*. 2000;174:1241–1244.
49. Higgins JP, Thompson SG, Deeks JJ, Altman DG. Measuring inconsistency in meta-analyses. *BMJ (Clinical Research ed)*. 2003;327:557–560.
50. Egger M, Smith GD, Schneider M, Minder C. Bias in meta-analysis detected by a simple, graphical test. *BMJ*. 1997;315:629–634.
51. Ildikó R, Zimmer A. Animal models of nociception. In: Hrabě de Angelis Martin, Chambon Pierre, Brown Steve, editors. *Standards of Mouse Model Phenotyping*, 53. Chichester: Wiley-Blackwell; 2009. p. 221–235.
52. Le Bars D, Gozariu M, Cadden SW. Animal models of nociception. *Pharmacol Rev*. 2001;53:597–652.
53. Mogil JS. Animal models of pain: progress and challenges. *Nat Rev Neurosci*. 2009;10:283–294.
54. Burnett MG, Zager EL. Pathophysiology of peripheral nerve injury: a brief review. *Neurosurg Focus*. 2004;16:1–7.
55. Scholz J, Woolf CJ. The neuropathic pain triad: neurons, immune cells and glia. *Nat Neurosci*. 2007;10:1361–1368.
56. Klusáková I, Dubový P. Experimental models of peripheral neuropathic pain based on traumatic nerve injuries—an anatomical perspective. *Ann Anat*. 2009;191:248–259.
57. Oyinbo CA. Secondary injury mechanisms in traumatic spinal cord injury: a nugget of this multiply cascade. *Acta Neurobiol Exp (Wars)*. 2011;71:281–299.
58. Montespan F, Deschaseaux F, Sensébé L, et al. Osteodifferentiated mesenchymal stem cells from bone marrow and adipose tissue express HLA-G and display immunomodulatory properties in HLA-mismatched settings: implications in bone repair therapy. *J Immunol Res*. 2014;2014:1–10.
59. Hou R, Liu R, Niu X, et al. Biological characteristics and gene expression pattern of bone marrow mesenchymal stem cells in patients with psoriasis. *Exp Dermatol*. 2014;23:521–523.
60. Menendez P, Rodriguez R, Delgado M, Rosu-Myles M. Human bone marrow mesenchymal stem cells lose immunosuppressive and anti-inflammatory properties upon oncogenic transformation. *Exp Hematol*. 2014;42:549.
61. Zeng X, Zeng YS, Ma YH, et al. Bone marrow mesenchymal stem cells in a three-dimensional gelatin sponge scaffold attenuate inflammation, promote angiogenesis, and reduce cavity formation in experimental spinal cord injury. *Cell Transplant*. 2011;20:11–12.
62. Parr AM, Tator CH, Keating A. Bone marrow-derived mesenchymal stromal cells for the repair of central nervous system injury. *Bone Marrow Transplant*. 2007;40:609–619.
63. Oudega M, Ritfeld G. Bone marrow-derived mesenchymal stem cell transplant survival in the injured rodent spinal cord. *J Bone Marrow Res*. 2014;2:2–9.
64. Deda H, Inci M, Kürekçi A, et al. Treatment of chronic spinal cord injured patients with autologous bone marrow-derived hematopoietic stem cell transplantation: 1-year follow-up. *Cytotherapy*. 2008;10:565–574.
65. Yoon SH, Shim YS, Park YH, et al. Complete spinal cord injury treatment using autologous bone marrow cell transplantation and bone marrow stimulation with granulocyte macrophage-colony stimulating factor: phase I/II clinical trial. *Stem Cells*. 2007;25:2066–2073.
66. Pal R, Gopinath C, Rao NM, et al. Functional recovery after transplantation of bone marrow-derived human mesenchymal stromal cells in a rat model of spinal cord injury. *Cytotherapy*. 2010;12:792–806.
67. Li H, Wen Y, Luo Y, et al. Transplantation of bone marrow mesenchymal stem cells into spinal cord injury: a comparison of delivery different times. *Chin J Repar Reconstr Surg*. 2010;24:180–184.
68. Krampera M, Cosmi L, Angeli R, et al. Role for interferon- γ in the immunomodulatory activity of human bone marrow mesenchymal stem cells. *Stem Cells*. 2006;24:386–398.