



Nami B., et al., *BiolImpacts*, 2016, 6(2), 105-110  
doi: 10.15171/bi.2016.15  
<http://bi.tbzmed.ac.ir/>



## Overexpression of molecular chaperons GRP78 and GRP94 in CD44<sup>hi</sup>/CD24<sup>lo</sup> breast cancer stem cells

Babak Nami<sup>1\*</sup>, Armin Ghasemi-Dizgah<sup>2</sup>, Akbar Vaseghi<sup>3</sup>

<sup>1</sup> Department of Medical Genetics and The Women and Children's Health Research Institute (WCHRI), University of Alberta, Edmonton, Alberta, Canada

<sup>2</sup> Department of Microbiology, Iran University of Medical Sciences, Tehran, Iran

<sup>3</sup> Young Researchers and Elite Club, Ardabil Branch, Islamic Azad University, Ardabil, Iran

### Article Info



**Article Type:**  
Original Article

### Article History:

Received: 10 Apr. 2016  
Revised: 22 June 2016  
Accepted: 26 June 2016  
ePublished: 30 June 2016

### Keywords:

Breast cancer  
Cancer stem cell  
GRP78  
GRP94  
Overexpression

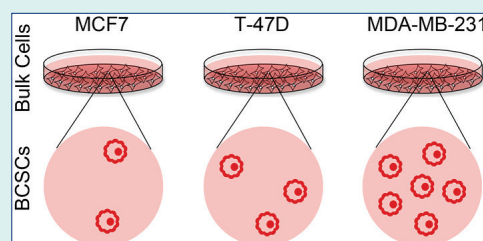
### Abstract

**Introduction:** Breast cancer stem cell with CD44<sup>hi</sup>/CD24<sup>lo</sup> phenotype is described having stem cell properties and represented as the main driving factor in breast cancer initiation, growth, metastasis and low response to anti-cancer agents. Glucose-regulated proteins (GRPs) are heat shock protein family chaperons that are charged with regulation of protein machinery and modulation of endoplasmic reticulum homeostasis whose important roles in stem cell development and invasion of various cancers have been demonstrated. Here, we investigated the expression levels of GRP78 and GRP94 in CD44<sup>hi</sup>/CD24<sup>lo</sup> phenotype breast cancer stem cells (BCSCs).

**Methods:** MCF7, T-47D and MDA-MB-231 breast cancer cell lines were used. CD44<sup>hi</sup>/CD24<sup>lo</sup> phenotype cell population were analyzed and sorted by fluorescence-activated cell sorting (FACS). Transcriptional and translational expression of GRP78 and GRP94 were investigated by western blotting and quantitative real time PCR.

**Results:** Results showed different proportion of CD44<sup>hi</sup>/CD24<sup>lo</sup> phenotype cell population in their original bulk cells. The ranking of the cell lines in terms of CD44<sup>hi</sup>/CD24<sup>lo</sup> phenotype cell population was as MCF7<T-47D<MDA-MB-231. Our results also indicated that CD44<sup>hi</sup>/CD24<sup>lo</sup> phenotype cells exhibited higher mRNA and protein expression level of GRP78 and GRP94 compared to their original bulk cells.

**Conclusion:** Our results show a relationship between overexpression of GRP78 and GRP94 and exhibiting CD44<sup>hi</sup>/CD24<sup>lo</sup> phenotype in breast cancer cells. We conclude that upregulation of GRPs may be an important factor in the emergence of CD44<sup>hi</sup>/CD24<sup>lo</sup> phenotype BCSCs features.



### Introduction

Cancer stem cell theory propagates cancers arise by direction of minor subset of stem/progenitor cells inside tumors.<sup>1</sup> Breast cancer stem cells (BCSCs) with CD44<sup>hi</sup>/CD24<sup>lo</sup> phenotype inside breast tumors are known to have tumor-initiating behavior with stem cell-like characteristics, enhanced invasive properties and radiation resistance.<sup>2</sup> CD44<sup>hi</sup>/CD24<sup>lo</sup> phenotype cells were able to self-renewal, to maintain its subpopulation in tumor and to differentiate into downstream tumor cells resembling the composition of the original tumor.<sup>2,3</sup> Evidences support prominent role of CD44<sup>hi</sup>/CD24<sup>lo</sup> phenotype BCSCs in metastasis, resistant to chemotherapy and therefore responsible for can-

cer relapse.<sup>3,4</sup> These cells exhibit a distinct gene expression signature that allows them to act as core engine for breast cancer malignancy.<sup>5</sup> CD44<sup>hi</sup>/CD24<sup>lo</sup> phenotype BCSCs possess many genetic and epigenetic features which are common in both cancerous and normal stem cells. It is due to significant molecular properties including altered response mechanism to DNA damage in BCSC that grant the cells to survival, invasion and chemoresistance.<sup>6</sup> Essentially, rapid growth of tumor leads to undesirable metabolic environment such as, hypoxic and nutrient deprived, having reduced amounts of both amino acids and glucose. Nutrient and hypoxic stressors damage protein machinery and consequently cause unfolded/misfold-

\*Corresponding author: Babak Nami, Email: [namimoll@ualberta.ca](mailto:namimoll@ualberta.ca)



© 2016 The Author(s). This work is published by BioImpacts as an open access article distributed under the terms of the Creative Commons Attribution License (<http://creativecommons.org/licenses/by-nc/4.0/>). Non-commercial uses of the work are permitted, provided the original work is properly cited.

ed protein accumulation in endoplasmic reticulum (ER) lumen. This phenomenon eventually activates unfolded protein response and ER stress.<sup>7,8</sup> ER stress acts as regulator of cell homeostasis in response to aberrant synthesis machinery through controlling calcium balance and employment of ER chaperon proteins.<sup>8</sup> Glucose Regulated Protein 78 and 94 kDa (GRP78 and GRP94) are heat shock protein family molecular chaperons that are found in the lumen of the ER. GRPs are essential regulator of ER function due to their function in protein translocation, folding and assembly, targeting malformed protein for degradation, ER Ca<sup>2+</sup> binding and controlling the initiation of ER stress sensors.<sup>9,10</sup> Expression of GRPs is also increases under growth conditions in particular glucose starvation. Studies showed that GRPs were essential for embryonic cell growth and its function is obligatory for early embryonic development.<sup>10-12</sup>

Altered GRPs expression has been reported in various cancers. GRPs are thought to play key roles in cancer cell survival, proliferation, invasion and several pathologic conditions such as poor prognosis and resistance to anticancer therapy.<sup>9,11,13</sup> GRPs exhibit an anti-apoptotic function to block activity of apoptosis and autophagy, and eventually leading to death inhibition and increased cell survival.<sup>13-15</sup> Emerging evidences suggest that GRPs may be exploited as negative factors for death inducing approaches such as radiotherapy as well as may be a diagnostic marker for breast cancer chemo-responsiveness.<sup>15</sup> It has been shown that chemotherapy against breast cancer leads to increasing level of GRPs in viable tumor tissues. Recent studies reported that cell surface GRP78 are required for regulation of hematopoietic, fetal and adult mammary stem cells quiescence that aid the stem cells to restore homeostasis.<sup>16,17</sup> The reports also revealed pivotal function of GRP78 and GRP94 in mammary tissue development.<sup>18,19</sup> Interestingly, a recent report demonstrated that expression of GRP78 increases resistance of the breast cancer stem cell-like cells against radiotherapy.<sup>20</sup> Moreover, we recently showed that chemical-induced ER stress in MCF7 cells suppresses CD44<sup>hi</sup>/CD24<sup>lo</sup> phenotype BCSCs subpopulation and eventually inhabits cell migration and invasion.<sup>21</sup> Relying on these findings, we believe that ER stress and CD44<sup>hi</sup>/CD24<sup>lo</sup> phenotype BCSCs may be exploited as potential targets to use in treatment of breast cancer. In this study, we aimed to investigate expression status of ER shaperons GRP78 and GRP94 in BCSCs.

## Materials and methods

### Cell culture

MCF7, T-47D and MDA-MB-231 breast cancer cell lines were obtained from American Type Tissue Culture Collection (Manassas, USA). The cells were grown in Dulbecco's modified eagle medium (DMEM)/F12 containing 10% fetal calf serum (FCS; both from Gibco, Rockford, USA), supplemented with 2 mmol/mL L-glutamine (Gibco, Rockford, USA) by incubation at 37°C in a 5% CO<sub>2</sub> humidified incubator. After the cell culture reached 80% confluence, the cells were trypsinized with 0.25% trypsin (Sigma-Aldrich, St. Luis, USA) and harvested.

### Flow cytometry and fluorescence-activated cell sorting (FACS)

FITC-conjugated monoclonal mouse anti-human CD44 IgG (#555478) and PE-conjugated monoclonal mouse anti-human CD24 IgG (#555428) antibodies and their respective isotype controls were used (all from BD Biosciences, San Diego, USA). All flow cytometry and FACS procedures were done as described previously.<sup>22</sup>

### Real time quantitative PCR

Total RNA from original cell lines and sorted CD44<sup>hi</sup>/CD24<sup>lo</sup> phenotype cells was extracted using TRIzol reagent (Invitrogen, Waltham, USA) according to protocol described previously.<sup>23</sup> cDNA synthesis from total RNA was carried out using Transcriptor High Fidelity cDNA Synthesis<sup>®</sup> kit (Roche, Basel, Switzerland) by applying the oligo (dT)<sub>18</sub> primer pairs following the manufacturer's instructions. Whole real time quantitative PCR reactions were done by employing an Applied Biosystems<sup>®</sup> 7500 real time PCR system and using TaqMan<sup>®</sup> Universal PCR Master Mix following the manufacturer's instructions. Aequence of used primers and probes are shown in Table 1. Specific primers for PCR amplification were designed using IDT PrimerQuest software<sup>24</sup> and synthesized by Biomers Inc. (Ulm, Germany). The cycle thresholds results were normalized to GAPDH as endogenous control. The expression levels were calculated by 2<sup>ΔΔct</sup>.

### Western blotting

Polyclonal rabbit anti-human GRP78 IgG (#G9043), Polyclonal goat anti human GRP94 IgG (#G4545), rabbit anti human GAPDH IgG (#G9545) and HRP conjugated goat anti rabbit IgG (#A0545) were purchased from Sigma-Al-

**Table 1.** Sequences of primers and TaqMan probes used for quantitative real time qPCR

Target cDNA (RefSeq)	Sequence
GRP78 (NM_005347.4)	Forward: 5'-GGTGGATCACAAGGTCAAGAG-3'
	Probe: 5'-/FAM/TGCCAACATGGTGAAGACTCCATCTCT/BHQ/-3'
	Reverse: 5'-CTACCACGCCAGCTAATT-3'
GRP94 (NM_003299.2)	Forward: 5'-GGCAAGGACATCTCTACAAA-3'
	Probe: 5'-/FAM/ATTTGAAATTAATCCAGACACCCGCTGA/BHQ/-3'
	Reverse: 5'-CCTTAATTCGTGCAAGCATGT-3'
GAPDH (NM_002046.4)	Forward: 5'-TCCAGAACATCATCCCTGC-3'
	Probe: 5'-/FAM/TGTGGGCAAGGTCATCCCTGAG/BHQ/-3'
	Reverse: 5'-CAGTGAGCTTCCCGTTCA-3'

drich (St. Louis, MO, USA). Total proteins from the cells were extracted using ReadyPreb protein extraction kit (Bio-Rad Laboratories, Berkeley, USA) following the manufacturer's instructions. The protein samples were prepared by adding a same volume of 4x lammeli buffer and then incubation at 95°C for 5 minutes. Amount 20 µg of total protein from each sample was run in %8 gel (10% acrylamide, 0.4% Tris, 0.1% SDS, 0.1% ammonium persulfate, 0.1% tetramethylethylenediamine (TEMED) and 89.3% ddH<sub>2</sub>O) at 40 mA electric current for an hour. After the electrophoresis, proteins were transferred onto nitrocellulose membrane (Bio-Rad Laboratories, Berkeley, USA) by overnight wet blotting. Blocking of membrane was done with 3% non-fat milk solution for an hour in 50 rpm agitation. The immunoblotting was accomplished by incubation of the membrane with 100 ng/mL (1:1000) of primary antibody solution and then 50 ng/mL (1:2000) of secondary antibody each for 2 hours at room temperature. At the end of the blotting, the membrane was incubated in Immun-star WesternC Chemiluminescent (Bio-Rad Laboratories, Berkeley, USA; #170-5070) substrate solution for 5 minutes then imaged by a gel documentation system (Bio-Rad Laboratories, Berkeley, USA).

### Statistical analysis

The statistical significances were considered applying two-tailed analysis of variance (ANOVA) using GraphPad Prism® V.6.00 software (GraphPad software Inc., La Jolla, USA). A  $p < 0.05$  was considered as statistically significant.

## Results

### Human breast cancer cell lines differ in the CD44<sup>hi</sup>/CD24<sup>lo</sup> phenotype BCSCs subpopulation

Due to heterogeneity of breast tumor we selected the cell lines regarding distinct characteristics in order to reach confident information. MCF7 and T47-D are estrogen receptor positive luminal A cell lines that can only form tumor in the presence of estrogen and often response to anti-estrogen chemotherapy. However, MDA-MB-231 is a claudin low and triple negative breast cancer (TNBC) cell line which is more aggressive with lower response to chemotherapy compared to the other cells.<sup>25</sup> We analyzed CD44<sup>hi</sup>/CD24<sup>lo</sup> phenotype BCSC subpopulation and sorted them into a serum free medium and then extracted RNA and protein immediately. As flow cytometry result, the mean percentage of CD44<sup>hi</sup>/CD24<sup>lo</sup> phenotype cells in MCF7, T-47D and MDA-MB-231 cells was found as respectively, 0.97% (SD=0.15), 1.43% (SD=0.2) and 4.1% (SD=0.95; Fig. 1). The results showed a significant different in the subpopulation of CD44<sup>hi</sup>/CD24<sup>lo</sup> phenotype cells between the cell lines ( $p < 0.01$ ; Fig. 1). This data shows that subpopulation of CD44<sup>hi</sup>/CD24<sup>lo</sup> vary in different types of breast cancer cell lines.

### Overexpression of GRP78 and GRP94 in CD44<sup>hi</sup>/CD24<sup>lo</sup> phenotype BCSCs

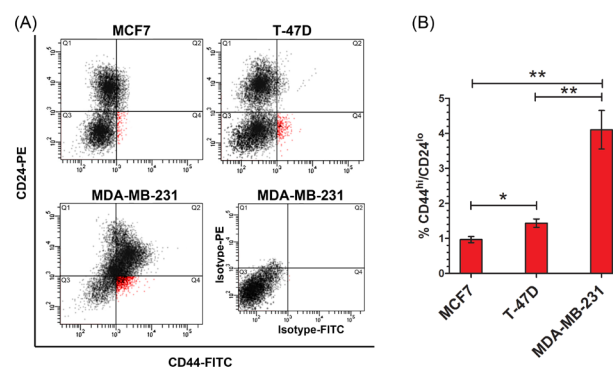
To determine expression level of GRPs in the original breast cancer cell lines and their CD44<sup>hi</sup>/CD24<sup>lo</sup> pheno-

type cells, we analyzed transcriptional and translational expression levels of GRP78 and GRP94 in both bulk and FACS sorted CD44<sup>hi</sup>/CD24<sup>lo</sup> phenotype cells. Western blot analysis result showed a higher GRP78 and GRP94 protein expressions in the CD44<sup>hi</sup>/CD24<sup>lo</sup> phenotype cells in comparison with their original cell lines (Fig. 2A). Similarly, the quantitative real time PCR analysis showed that RNA expression of GRP78 and GRP94 was considerably higher in the CD44<sup>hi</sup>/CD24<sup>lo</sup> phenotype cells isolated from MCF7 ( $p < 0.01$ ), T-47D ( $p < 0.01$ ) and MDA-MB-231 ( $p < 0.01$ ) compared with their original cells (Fig. 2B). These results indicate that CD44<sup>hi</sup>/CD24<sup>lo</sup> phenotype BCSCs show a higher level of expression of GRP78 and GRP94 when compared with their original cell lines.

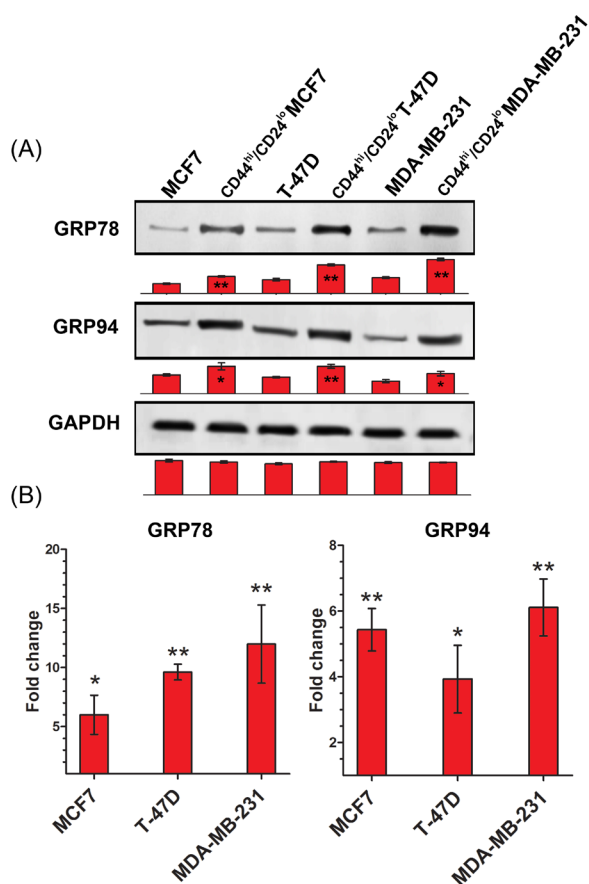
## Discussion

In this study, we investigated GRP78 and GRP94 gene expression in the CD44<sup>hi</sup>/CD24<sup>lo</sup> phenotype cell subpopulations of MCF7, T-47D and MDA-MB-231 cell lines. CD44<sup>hi</sup>/CD24<sup>lo</sup> cells in breast cancers are represented possessing progenitor/stem cell properties and were known as core engine of tumor growth, invasion, and resistance to anti-cancer agents. Positive impact of BSCS population in generation of tumor in animal models, metastasis and response to anti-cancer therapies has been reported previously.<sup>1-6</sup> In present study we showed different proportion of CD44<sup>hi</sup>/CD24<sup>lo</sup> phenotype cell subpopulation in MCF7, T-47D and MDA-MB-231 cell lines. we found that MCF7 and T-47D cells were contained significant proportion of CD44<sup>hi</sup>/CD24<sup>lo</sup> cells while MDA-MB-231 cell line had more CD44<sup>hi</sup>/CD24<sup>lo</sup> phenotype cells. This may have purported the relation of BCSC subpopulation with invasion features of breast cancers at least in vitro condition. Its demonstrated that the tendency of breast tumors to invasion is linked to their BCSC subpopulation inside the tumors.

Previous studies reported a distinct gene expression profile in CD44<sup>hi</sup>/CD24<sup>lo</sup> phenotype BCSCs. They suggest

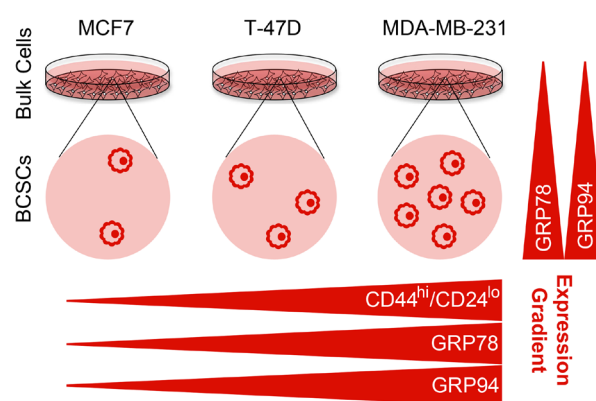


**Fig. 1.** Distinct rate of CD44<sup>hi</sup>/CD24<sup>lo</sup> phenotype cell subpopulation in breast cancer cell lines. (A) Flow cytometry dot plate results of CD44<sup>hi</sup>/CD24<sup>lo</sup> phenotype cell subpopulation in breast cancer cell lines. Cells in Q4 is correspond to CD44<sup>hi</sup>/CD24<sup>lo</sup> phenotype cells. An isotype antibodies corresponding to MDA-MB-231 cells was used as control. (B) Percentage of CD44<sup>hi</sup>/CD24<sup>lo</sup> phenotype cell subpopulation which was identified in breast cancer cell lines by. \*  $p < 0.05$ , \*\*  $p < 0.01$ .



**Fig. 2.** Overexpression of GRP78 and GRP94 in CD44<sup>hi</sup>/CD24<sup>lo</sup> phenotype BCSCs (A) Western blot protein analysis showed high levels of GRP78 and GRP94 protein expression in CD44<sup>hi</sup>/CD24<sup>lo</sup> phenotype cells. (B) Real time quantitative PCR results exhibited multiplied transcriptional expression of GRP78 and GRP94 in CD44<sup>hi</sup>/CD24<sup>lo</sup> phenotype cells compared with relevant original bulk cells. GAPDH was used as housekeeping gene control. \*  $p < 0.05$ , \*\*  $p < 0.01$ .

that holding unique genetic and epigenetic feature may be the main productive trend of BCSCs to exhibit stemness properties.<sup>26</sup> Here, we showed higher levels of GRP78 and GRP94 expression in CD44<sup>hi</sup>/CD24<sup>lo</sup> phenotype BCSCs derived from MCF7, T-47D and MDA-MB-231 cell lines (Fig. 3). Significant function of GRPs in developmental processes and stem cell biology implicates that GRPs may be key factors for stem cell to manifest pluripotency behavior, although the exact mechanism remains unknown. Thus we speculate that overexpressed GRP78 and GRP94 in BCSCs may due to of the molecular regulators which push the cells to emerge progenitor/stem cell like behavior. In other words, higher level GRPs in the cells may arise from stem cell-like function in these cells. Regarding to a rational theory suggesting cancer stem cell origins from normal somatic stem cells, it is more probable to note higher levels of GRP78 and GRP94 are as the common features between cancerous and normal stem cells. GRPs are essential for ER homeostasis and cell survival under ER stress. GRPs evacuate malformed proteins in ER lumen and their assistance in modulation of homeostasis made it as advantageous factor for tumor survival



**Fig. 3.** Model summarizing the expression gradient of GRP78 and GRP94 in CD44<sup>hi</sup>/CD24<sup>lo</sup> phenotype BCSCs in MCF-F, T-47D and MDA-MB-231 cells. CD44<sup>hi</sup>/CD24<sup>lo</sup> phenotype cell subpopulation in the cells was detected as MCF7 < BT47D < MDA-MB-231. CD44<sup>hi</sup>/CD24<sup>lo</sup> phenotype cells showed higher level of expression of GRPs than their original bulk cells (vertical gradients). Expression of GRPs in the CD44<sup>hi</sup>/CD24<sup>lo</sup> phenotype cells derived from original bulk cells was detected as MCF7<sub>CD44<sup>hi</sup>/CD24<sup>lo</sup></sub> < BT47D<sub>CD44<sup>hi</sup>/CD24<sup>lo</sup></sub> < MDA-MB-231<sub>CD44<sup>hi</sup>/CD24<sup>lo</sup></sub> (horizontal gradients). There is a positive correlation between exhibition of CD44<sup>hi</sup>/CD24<sup>lo</sup> phenotype and expression of GRPs in the cell lines.

and resistance in stressful conditions. GRP78 was found as an overexpressed gene during breast cancer invasion specially metastasis to lymph nodes.<sup>27</sup> A recent investigation illustrated a novel GRP78 function in deactivation of apoptotic paths in breast cancer. According to this report, GRP78 inhibits BIK protein binding to BCL-2 in breast cancer cells. This suggests that GRP78 may be a responsible factor in endocrine resistance in breast cancer.<sup>15</sup> Higher level of GRP94 expression was also observed in breast carcinoma in comparison with normal tissue.<sup>13</sup> Moreover, investigating GRP94 expression in HER2 overexpressed breast cancers, revealed that inhibition of GRP94 could destabilizes HER2 and inhibited RAF1-MAPK survival signaling at tumor cell membrane.<sup>28</sup> HER2 leads to activation of different downstream signaling cascades, including the MAPK, a key pathway for proliferation, and also a set of critical factors which may lead to increased cell proliferation, motility, decreased apoptosis, angiogenesis and resistance against therapy. Silencing of GRP94 causes inhibition of proliferation and migration in MDA-MB-231 breast cancer cell line.<sup>27</sup> These data may support the notion that overexpression of GRPs may be a hallmark for breast malignancy that it has been intertwined with breast tumor molecular abnormalities. Thus, it may think to be a part of breast cancer pathophysiology. In addition, it can exclude ER stress-mediated apoptosis and autophagy *in vitro* and *in vivo* tumor models. Many studies demonstrated ER stress role in suppression of cancers.<sup>29,30</sup> In a recent study, we demonstrated that CD44<sup>hi</sup>/CD24<sup>lo</sup> phenotype BCSCs are vulnerable against ER stress. Induced ER stress in breast cancer bulk cells inhibits cell proliferation and invasion via promoting cell death in parallel with suppressed subpopulation of CD44<sup>hi</sup>/CD24<sup>lo</sup> phenotype cells.<sup>21</sup> In the other hand, autophagy is a con-

sequence phenomenon of ER stress.<sup>31</sup> In another report, we showed that CD44<sup>hi</sup>/CD24<sup>lo</sup> phenotype cancer stem cell subpopulation declines under autophagic condition.<sup>22</sup> GRPs play crucial negatively regulatory roles in ER stress. GRP78 and GRP94 knockout mice models showed that deletion of these genes led to a dramatic reduction in tumor angiogenesis and metastatic growth and increasing apoptosis in tumor tissue.<sup>27,32,33</sup> A recent interesting report illustrated that GRP78 knockout CD44<sup>hi</sup>/CD24<sup>lo</sup> phenotype cells showed very lower tumorigenesis, compared with GRP78 wild-type CD44<sup>hi</sup>/CD24<sup>lo</sup> phenotype cells. Silencing GRP78 in CD44<sup>hi</sup>/CD24<sup>lo</sup> phenotype cells increased chemo-radiosensitivity and inhibited cell invasion and reverse epithelial-mesenchymal transition.<sup>34</sup> This may relate that GRP78 has important functions in CD44<sup>hi</sup>/CD24<sup>lo</sup> phenotype cells like other phenotype tumor cells. In summary, GRPs play key role in normal breast tissue, adult stem cells and also breast tumor cells survival and development. Therefore, we suggest that expression status of GRPs is the common aspect between distinct phenotype cells in breast tumor. It is important to investigate the linkage of GRPs and breast cancer stem cells properties including self-renewal, differentiation and resistance. Relying on these findings, we suppose that overexpression of GRP78 and GRP94 in the BCSCs may be part of the intrinsic biology of these types of cancer cells due to its function in exhibition of both tumor and stem cell characteristics, however the reason of up-regulation is not clear yet. There are not significant reports concerning expression profile of breast cancer stem cells yet. This study is the first report implicating overexpression of GRPs in breast cancer stem cells. In many reports, GRPs have been known as an oncogene which is suggested to be a strong candidate targets in breast cancer therapy. Thus, we strongly encourage future investigations to clarify potential of GRPs to be used as target for cancer therapy.

### Conclusion

This report shows that different breast cancer cell lines exhibit dissimilar contents of CD44<sup>hi</sup>/CD24<sup>lo</sup> phenotype cells. Our findings suggest overexpression of GRP78 and GRP94 genes in CD44<sup>hi</sup>/CD24<sup>lo</sup> phenotype BCSCs in comparison with the original cell lines suggesting a relationship between expression of GRPs and exhibition of CD44<sup>hi</sup>/CD24<sup>lo</sup> phenotype in the cell lines (Fig. 3). Given that GRPs share similar signature in adult stem cells, breast tissue and breast tumor cells gene expression profile, we conclude that GRPs could play an important role in exhibition cancer stem cell properties and overexpression may be a hallmark for CD44<sup>hi</sup>/CD24<sup>lo</sup> phenotype BCSCs.

### Ethical approval

Not applicable.

### Competing interests

Authors declare no conflict of interests.

### References

1. Kreso A, Dick JE. Evolution of the cancer stem cell model. *Cell Stem Cell*. **2014**; 14: 275–91. doi:10.1016/j.

## Research Highlights

### What is current knowledge?

- ✓ Subpopulation of breast cancer stem cells inside breast tumor has a relationship with tumor malignancy, invasion and resistance against therapy.
- ✓ Chaperon proteins GRP78 and GRP94 are known to play roles in ER stress-mediated death and survival of both normal stem cells and cancer cells.
- ✓ The expression of GRP78 and GRP94 genes in breast cancer stem cells has not been elevated yet.

### What is new here?

- ✓ Distinct subpopulation of CD44<sup>hi</sup>/CD24<sup>lo</sup> phenotype breast cancer stem cells can be seen inside different breast cancer cell lines.
- ✓ GRP78 and GRP94 are overexpressed in CD44<sup>hi</sup>/CD24<sup>lo</sup> phenotype breast cancer stem cells.
- ✓ There is a positive correlation between upregulation of GRP78 and GRP94 and subpopulation of CD44<sup>hi</sup>/CD24<sup>lo</sup> phenotype breast cancer stem cells.

stem.2014.02.006

2. Al-Hajj M, Wicha MS, Benito-Hernandez A, Morrison SJ, Clarke MF. Prospective identification of tumorigenic breast cancer cells. *Proc Natl Acad Sci U S A*. **2003**; 100: 3983–8. doi:10.1073/pnas.0530291100
3. Fillmore CM, Kuperwasser C. Human breast cancer cell lines contain stem-like cells that self-renew, give rise to phenotypically diverse progeny and survive chemotherapy. *Breast Cancer Res*. **2008**; 10: R25. doi:10.1186/bcr1982
4. Vinogradov S, Wei X. Cancer stem cells and drug resistance: the potential of nanomedicine. *Nanomedicine (Lond)*. **2012**; 7: 597–615. doi:10.2217/nnm.12.22
5. Lin X, Li J, Yin G, Zhao Q, Elias D, Lykkesfeldt AE, et al. Integrative analyses of gene expression and DNA methylation profiles in breast cancer cell line models of tamoxifen-resistance indicate a potential role of cells with stem-like properties. *Breast Cancer Res*. **2013**; 15: R119. doi:10.1186/bcr3588
6. Abdullah LN, Chow EK-H. Mechanisms of chemoresistance in cancer stem cells. *Clin Transl Med*. **2013**; 2: 3. doi:10.1186/2001-1326-2-3
7. Scheuner D, Song B, McEwen E, Liu C, Laybutt R, Gillespie P, et al. Translational control is required for the unfolded protein response and in vivo glucose homeostasis. *Mol Cell*. **2001**; 7: 1165–76.
8. Hammadi M, Oulidi A, Gackiere F, Katsogiannou M, Slomianny C, Roudbaraki M, et al. Modulation of ER stress and apoptosis by endoplasmic reticulum calcium leak via translocon during unfolded protein response: involvement of GRP78. *FASEB J Off Publ Fed Am Soc Exp Biol*. **2013**; 27: 1600–9. doi:10.1096/fj.12-218875
9. Luo B, Lee AS. The critical roles of endoplasmic reticulum chaperones and unfolded protein response in tumorigenesis and anticancer therapies. *Oncogene*.

- 2013; 32: 805–18. doi:10.1038/onc.2012.130
10. Mao C, Tai W-C, Bai Y, Poizat C, Lee AS. In vivo regulation of Grp78/BiP transcription in the embryonic heart: role of the endoplasmic reticulum stress response element and GATA-4. *J Biol Chem.* **2006**; 281: 8877–87. doi:10.1074/jbc.M505784200
  11. Luo S, Mao C, Lee B, Lee AS. GRP78/BiP is required for cell proliferation and protecting the inner cell mass from apoptosis during early mouse embryonic development. *Mol Cell Biol.* **2006**; 26: 5688–97. doi:10.1128/MCB.00779-06
  12. Baviskar SN, Shields MS. RNAi silenced Dd-grp94 (Dictyostelium discoideum glucose-regulated protein 94 kDa) cell lines in Dictyostelium exhibit marked reduction in growth rate and delay in development. *Gene Expr.* **2010**; 15: 75–87.
  13. Lee AS. Glucose-regulated proteins in cancer: molecular mechanisms and therapeutic potential. *Nat Rev Cancer.* **2014**; 14: 263–76. doi:10.1038/nrc3701
  14. Arnaudeau S, Arboit P, Bischof P, Shin-ya K, Tomida A, Tsuruo T, et al. Glucose-regulated protein 78: a new partner of p53 in trophoblast. *Proteomics.* **2009**; 9: 5316–27. doi:10.1002/pmic.200800865
  15. Zhou H, Zhang Y, Fu Y, Chan L, Lee AS. Novel mechanism of anti-apoptotic function of 78-kDa glucose-regulated protein (GRP78): endocrine resistance factor in breast cancer, through release of B-cell lymphoma 2 (BCL-2) from BCL-2-interacting killer (BIK). *J Biol Chem.* **2011**; 286: 25687–96. doi:10.1074/jbc.M110.212944
  16. Wey S, Luo B, Lee AS. Acute inducible ablation of GRP78 reveals its role in hematopoietic stem cell survival, lymphogenesis and regulation of stress signaling. *PLoS One.* **2012**; 7: e39047. doi:10.1371/journal.pone.0039047
  17. Luo B, Tseng C-C, Adams GB, Lee AS. Deficiency of GRP94 in the hematopoietic system alters proliferation regulators in hematopoietic stem cells. *Stem Cells Dev.* **2013**; 22: 3062–73. doi:10.1089/scd.2013.0181
  18. Spike BT, Kelber JA, Booker E, Kalathur M, Rodewald R, Lipianskaya J, et al. CRIPTO/GRP78 signaling maintains fetal and adult mammary stem cells ex vivo. *Stem cell reports.* **2014**; 2: 427–39. doi:10.1016/j.stemcr.2014.02.010
  19. Zhu G, Wang M, Spike B, Gray PC, Shen J, Lee S-H, et al. Differential requirement of GRP94 and GRP78 in mammary gland development. *Sci Rep.* **2014**; 4: 5390. doi:10.1038/srep05390
  20. Li B, Cheng XL, Yang YP, Li ZQ. GRP78 mediates radiation resistance of a stem cell-like subpopulation within the MCF7 breast cancer cell line. *Oncol Rep.* **2013**; 30: 2119–26. doi:10.3892/or.2013.2710
  21. Nami B, Donmez H, Kocak N. Tunicamycin-induced endoplasmic reticulum stress reduces in vitro subpopulation and invasion of CD44<sup>+</sup>/CD24<sup>-</sup> phenotype breast cancer stem cells. *Exp Toxicol Pathol.* **2016**; 4–11. doi:10.1016/j.etp.2016.06.004
  22. Nami B, Donmez H, Kocak N. Autophagy reduces subpopulation of CD44<sup>+</sup>/CD24<sup>-/low</sup> phenotype cancer stem cells in MCF7 and Hep-2 cells culture. *J Cancer Stem Cell Res.* **2015**; 3: 1. doi:10.14343/JCSCR.2015.3e1002
  23. Rio DC, Ares MJ, Hannon GJ, Nilsen TW. Polyacrylamide gel electrophoresis of RNA. *Cold Spring Harb Protoc.* **2010**; 2010: pdb.prot5444. doi:10.1101/pdb.prot5444
  24. IDT. PrimerQuest® program. Coralville, USA. <http://www.idtdna.com/Scitools>. [Internet]. **2012**.
  25. Holliday DL, Speirs V. Choosing the right cell line for breast cancer research. *Breast Cancer Res.* **2011**; 13: 215. doi:10.1186/bcr2889
  26. Bhat-Nakshatri P, Appaiah H, Ballas C, Pick-Franke P, Goulet RJ, Badve S, et al. SLUG/SNAI2 and tumor necrosis factor generate breast cells with CD44<sup>+</sup>/CD24<sup>-</sup> phenotype. *BMC Cancer.* **2010**; 10: 411. doi:10.1186/1471-2407-10-411
  27. Dejeans N, Glorieux C, Guenin S, Beck R, Sid B, Rousseau R, et al. Overexpression of GRP94 in breast cancer cells resistant to oxidative stress promotes high levels of cancer cell proliferation and migration: implications for tumor recurrence. *Free Radic Biol Med.* **2012**; 52: 993–1002. doi:10.1016/j.freeradbiomed.2011.12.019
  28. Patel PD, Yan P, Seidler PM, Patel HJ, Sun W, Yang C, et al. Paralog-selective Hsp90 inhibitors define tumor-specific regulation of HER2. *Nat Chem Biol.* **2013**; 9: 677–84. doi:10.1038/nchembio.1335
  29. Pyrko P, Kardosh A, Liu Y-T, Soriano N, Xiong W, Chow RH, et al. Calcium-activated endoplasmic reticulum stress as a major component of tumor cell death induced by 2,5-dimethyl-celecoxib, a non-coxib analogue of celecoxib. *Mol Cancer Ther.* **2007**; 6: 1262–75. doi:10.1158/1535-7163.MCT-06-0629
  30. Schonthal AH. Pharmacological targeting of endoplasmic reticulum stress signaling in cancer. *Biochem Pharmacol.* **2013**; 85: 653–66. doi:10.1016/j.bcp.2012.09.012
  31. Yorimitsu T, Nair U, Yang Z, Klionsky DJ. Endoplasmic reticulum stress triggers autophagy. *J Biol Chem.* **2006**; 281: 30299–304. doi:10.1074/jbc.M607007200
  32. Vandewynckel Y-P, Laukens D, Geerts A, Bogaerts E, Paridaens A, Verhelst X, et al. The paradox of the unfolded protein response in cancer. *Anticancer Res.* **2013**; 33: 4683–94.
  33. Pan Z, Erkan M, Streit S, Friess H, Kleeff J. Silencing of GRP94 expression promotes apoptosis in pancreatic cancer cells. *Int J Oncol.* **2009**; 35: 823–8.
  34. Chiu CC, Lee LY, Li YC, Chen YJ, Lu YC, Li YL, et al. Grp78 as a therapeutic target for refractory head-neck cancer with CD24(-)CD44(+) stemness phenotype. *Cancer Gene Ther.* **2013**; 20: 606–15. doi:10.1038/cgt.2013.64