



## Research Article



## Characterization of Antimicrobial Resistance Pattern and Molecular Analysis among Extended Spectrum $\beta$ -Lactamase-Producing *Escherichia coli*

Hossein Kazemian<sup>1,2</sup>, Hamid Heidari<sup>3</sup>, Roya Ghanavati<sup>4</sup>, Reza Mohebi<sup>2</sup>, Sobhan Ghafourian<sup>2</sup>, Aref Shavalipour<sup>5</sup>, Asieh Taji<sup>3</sup>, Hamidreza Hourii<sup>5\*</sup>

<sup>1</sup>Department of Medical Microbiology, School of Medicine, Tehran University of Medical Sciences, Tehran, Iran.

<sup>2</sup>Clinical Microbiology Research Center, Ilam University of Medical Sciences, Ilam, Iran.

<sup>3</sup>Department of Bacteriology and Virology, School of Medicine, Shiraz University of Medical Sciences, Shiraz, Iran.

<sup>4</sup>Department of Medical Microbiology, School of Medicine, Iran University of Medical Sciences, Tehran, Iran.

<sup>5</sup>Department of Microbiology, School of Medicine, Shahid Beheshti University of Medical Sciences, Tehran, Iran.

## Article Info

## Article History:

Received: 28 April 2016

Accepted: 23 July 2016

ePublished: 30 December 2016

## Keywords:

-ESBL

-*bla*<sub>SHV</sub>

-*bla*<sub>TEM</sub>

-RAPD-PCR

-*Escherichia coli*

## ABSTRACT

**Background:** Infection is a serious problem in medicine and appropriate antibiotic therapy is very important. Because of broad spectrum activity and low toxicity of  $\beta$ -lactam antibiotics, they are the most commonly used drugs. But, bacterial resistance to  $\beta$ -lactam antibiotics, has been considered as the global healthcare concern. The aim of study was to evaluate the antimicrobial resistance pattern and molecular characterization among ESBL-producing *Escherichia coli* isolated from patients with diarrhea admitted to a hospital in Ilam, Iran.

**Methods:** Totally, fifty *E. coli* isolates were investigated. Confirmatory tests for phenotypic detection of ESBLs were performed. Molecular identification of the *bla*<sub>TEM</sub> and *bla*<sub>SHV</sub> genes was carried out by PCR method. To identify genetic relatedness among isolates, Randomly Amplified Polymorphic DNA (RAPD) analysis was performed.

**Results:** The antibiotic susceptibility results showed that the most effective antibiotic was imipenem and minimum effect was related to gentamicin. Thirty-one isolates (62%) were ESBL-producing organisms according to phenotypic method. The distribution of *bla*<sub>TEM</sub> and *bla*<sub>SHV</sub> genes among ESBL-producing isolates were 20 (64.5%) and 6 (19.3%), respectively. RAPD-PCR typing among isolates gave us eight different types. Twelve isolates were clustered in genotype A and all of them were ESBL-producer.

**Conclusion:** The present study showed noticeable incidence of ESBL-producing *E. coli* isolated from outpatients and hospitalized patients with diarrhea. Therefore, it seems that constant supervision is crucial to monitor the ESBL-producing microorganisms in hospitals and community.

## Introduction

Infection is a serious problem in several areas of medicine and appropriate antibiotic therapy is very crucial. Because of broad spectrum activity and low toxicity of  $\beta$ -lactam antibiotics, they are the most commonly used drugs against infections.<sup>1</sup>

But over the past decade, bacterial resistance to antibiotics, especially  $\beta$ -lactam type, has been considered as the global healthcare concern.  $\beta$ -lactam resistance occurs by the mobilization of genes that encode efficient drug modifying enzymes such as  $\beta$ -lactamase.<sup>2-5</sup>

Extended-spectrum  $\beta$ -lactamases (ESBLs) are

considered as one of the most prevalent mechanisms of resistance to  $\beta$ -lactam agents especially in enteric gram-negative bacilli.<sup>6,7</sup> The enzymes, which are usually plasmid-encoded, have the ability to hydrolyze numerous  $\beta$ -lactam agents including penicillins, third-generation cephalosporins and aztreonam. They are inhibited by  $\beta$ -lactamase inhibitor including tazobactam and clavulanic acid.<sup>8,9</sup>

These phenotypic features can assist to detection of ESBL-producing bacteria by routine laboratory methods such as double disk diffusion test.<sup>10</sup> In addition, detection of specific genes is generally

\*Corresponding Author: Hamidreza Hourii, E-mail: [hr.hourii@gmail.com](mailto:hr.hourii@gmail.com)

©2016 The Authors. This is an open access article and applies the Creative Commons Attribution (CC BY), which permits unrestricted use, distribution, and reproduction in any medium, as long as the original authors and source are cited. No permission is required from the authors or the publishers.

applied for final verification. According to the literature, ESBLs production is related to presence of *bla*<sub>TEM</sub>, *bla*<sub>SHV</sub>, *bla*<sub>PER-1</sub>, *bla*<sub>GES</sub> and *bla*<sub>CTX</sub> genes.<sup>11,12</sup> Some researchers reported that most ESBLs are originated from *bla*<sub>TEM</sub> and *bla*<sub>SHV</sub> genes.<sup>13</sup>

ESBLs are frequently produced by *Escherichia coli* and *Klebsiella pneumoniae* isolates which are responsible for nosocomial and community-acquired infections.<sup>14</sup> *E. coli* is the most common causative microorganism of gastroenteritis, urinary tract infections and other hospital-acquired infections. Increasing the multidrug resistance strains is due to the widespread prescription of antibiotics against bacterial isolates.<sup>15,16</sup>

Therefore, determination of antimicrobial susceptibility and ESBL production patterns are essential for treatment of related infections. Additionally, identification of the genetic relatedness among isolates can be helpful for infection source control and making preventive procedures. The aim of study was to determine the frequency of ESBL-producing *E. coli* and their genetic diversity, isolated from gastroenteritis patients admitted to clinical laboratory of Imam Khomeini Hospitals in Ilam, west of Iran.

## Materials and Methods

### Bacterial strains

In this cross sectional study, 50 isolates of *E. coli* were collected from patients with diarrhea admitted to clinical laboratory of Imam Khomeini hospital in Ilam during July 2014 to January 2015. In order to genus confirmation, biochemical tests (oxidase, citrate, fermentation of glucose, lactose, motility, gas production, and SH<sub>2</sub> production) were performed.<sup>17</sup>

### Antimicrobial susceptibility

Antibiotic sensitivity tests were done by disc diffusion method on Mueller Hinton agar (Merck Co, Germany) according to the Clinical Laboratory Standards Institute (CLSI) guideline 2015.<sup>18</sup> The tested antibiotics (Mast Co., UK) were: imipenem (10 µg), gentamicin (10 µg), levofloxacin (5 µg), amikacin (30 µg), ciprofloxacin (5 µg) and trimethoprim/ sulfamethoxazole (1.25/23.75 µg).

### Phenotypic confirmatory test for determination of ESBL production

Combined disc method was utilize for identification of ESBL-producing organisms

according to CLSI guidelines.<sup>18</sup> Briefly, sensitivity tests to cefotaxime (30 µg), cefotaxime/clavulanate (10 µg), ceftazidime (30 µg) and ceftazidime/clavulanate (10 µg) disks (Mast Co., UK) were determined on Muller-Hinton agar (Merck Co, Germany). The plates were incubated for 18-24 h at 37 °C. ESBL-producing strains were recognized by at least 5 mm increase in zone diameter around cefotaxim/clavulanate and ceftazidime/clavulanate disks compared to disks without clavulanic acid.<sup>19</sup> *Escherichia coli* ATCC 25922 was used as control strain.

### Molecular detection of ESBLs related genes

DNA of the ESBL-producing isolates was extracted by boiling method. The PCR method for detection of *bla*<sub>SHV</sub> and *bla*<sub>TEM</sub> genes was carried out as described previously.<sup>20</sup> Briefly, the PCR protocol was 30 cycles of 60 s at 95 °C, 45 s at 48 °C (for *bla*<sub>SHV</sub>) and 50 °C (for *bla*<sub>TEM</sub>), and 45 s at 72 °C. A final extension step was done at 72 °C for 5 min. PCR products were separated by electrophoresis in 1% agarose gels. Oligonucleotide primers were mentioned in Table 1.

### Molecular genotyping

Randomly Amplified Polymorphic DNA (RAPD) analysis was also performed to identify genetic relatedness among isolates as described previously with a little modification. RAPD-PCR oligonucleotide primer was 5'-AAGAGCCCG-3'.<sup>21</sup> Briefly, the PCR protocol was a predenaturation step at 95 °C for 5 min, followed by 35 cycles of 60 s at 95 °C, 45 s at 42 °C, and 50 s at 72 °C. A final extension step was performed at 72 °C for 5 min. PCR products were separated by electrophoresis in 1.5% agarose gels. After agarose gel electrophoresis, banding patterns were analyzed by visual examination. Classification as a distinct RAPD type was based on difference between two or more band of each banding pattern. In other words, isolates were classified as identical RAPD types when their banding patterns were similar or different in one band only.<sup>22</sup>

### Statistical analysis

Resistance to antimicrobial agents between ESBL-producing and non ESBL-producing isolates was investigated by Chi-square test. A p-value of <0.05 was considered as statistically significant.

**Table 1.** Oligonucleotide primers used for ESBL detection.

Target gene	Primer sequence	Reference
<i>bla</i> <sub>TEM</sub>	F: 5'-ATGAGTATTCAACATTTCCG-3'	20
	R: 5'-CCAATGCTTAATCAGTGAGC-3'	
<i>bla</i> <sub>SHV</sub>	F: 5'-CTTTACTCGCTTTATCG-3'	20
	R: 5'-TCCCGCAGATAAATCACCA-3'	

**Table 2.** Antibiotic resistance pattern of ESBL and non ESBL-producing isolates.

Antibiotics	Resistance rate (n=50)	ESBL-producing isolates (n=31)	Non ESBL-producing isolates (n=19)
Imipenem	0 (0%)	0 (0%)	0 (0%)
Ciprofloxacin	13 (26%)	9 (29.3%)	4 (21%)
Levofloxacin	1 (2%)	1 (3.2%)	0 (0%)
Gentamicin	19 (38%)	13 (41.9%)	6 (31.5%)
Amikacin	7 (14%)	3 (9.6%)	4 (21%)
Trimethoprim/Sulfamethoxazole	16 (32%)	11 (35.4%)	5 (26.3%)

**Results**

The antibiotics susceptibility results showed that the most effective antibiotics were imipenem followed by levofloxacin and amikacin. Resistance rates to gentamicin, ciprofloxacin and trimethoprim/ sulfamethoxazole were 38%, 26% and 32% respectively. Resistance to almost all tested antibiotics among ESBL-producing isolates were more than non ESBL-producing isolates without significant correlation (Table 2).

In this study, of fifty collected *E. coli* isolates, 31 isolates (62%) were ESBL-producing based on phenotypic method (Table 3).

**Table 3.** The prevalence of ESBL-producing *E. coli* by disk diffusion method.

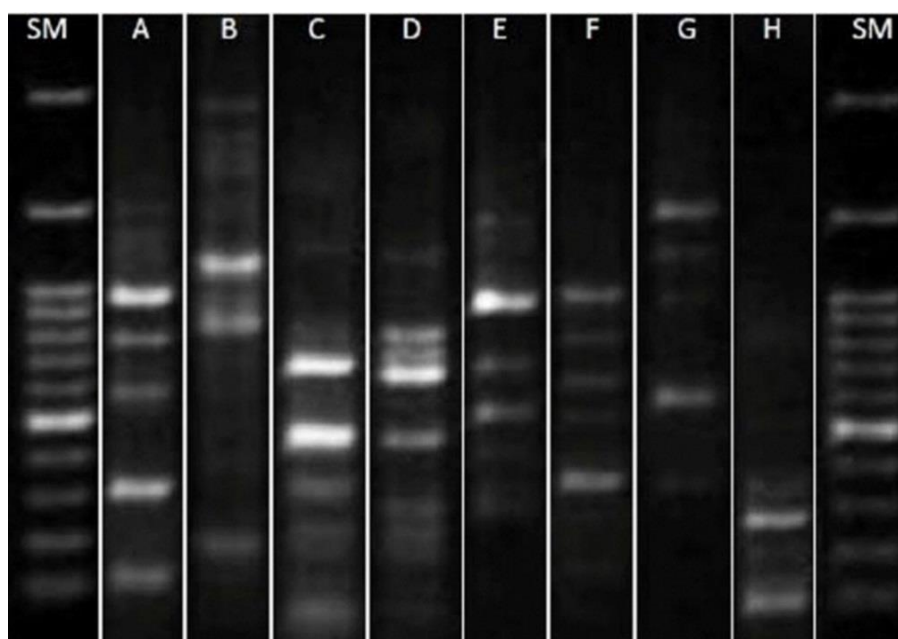
ESBL-positive N (%)	ESBL-negative N (%)
31 (62)	19 (38)

Also, the distribution of *bla*<sub>TEM</sub> and *bla*<sub>SHV</sub> genes among ESBL-producing isolates was 20 (64.5%) and 6 (19.3%), respectively (Table 4).

RAPD-PCR genotyping gave us 8 (A-H) different types (figure 1). The most prevalent type was A, containing 12 isolates. All of them were ESBL-producing stains. Of these 12 strains, 9 isolates carried *bla*<sub>TEM</sub> gene and only one of them had *bla*<sub>SHV</sub> gene. Subsequent prevalent type was B, consisting of 8 isolates which 5 strains were ESBL producer. In B genotype *bla*<sub>TEM</sub> and *bla*<sub>SHV</sub> genes were found in 3 and 2 strains respectively. In our analysis, the H genotype was unique and containing only on isolate. This strain was ESBL producer but had not *bla*<sub>SHV</sub> or *bla*<sub>TEM</sub> gene.

**Table 4.** The frequency of *bla*<sub>TEM</sub> and *bla*<sub>SHV</sub> genes among ESBL-producing *E.coli* isolates.

<i>bla</i> <sub>TEM</sub> positive N(%)	<i>bla</i> <sub>SHV</sub> positive N(%)	Total N(%)	<i>bla</i> <sub>TEM</sub> and <i>bla</i> <sub>SHV</sub> negative N(%)
20 (64.5)	6 (19.3)	26 (83.8)	5 (16.2)



**Figure 1.** RAPD-PCR patterns of *E. coli* isolates, Lanes 1 and 10; DNA size marker (100bp), Lanes A-H; eight RAPD genotypes. Patterns A and B were related to 12 and 8 isolates respectively. Pattern H was seen in 1 isolate exclusively.

## Discussion

The emergence of ESBL producer gram negative bacteria in the clinical setting has been reported from around the world.<sup>8,23,24</sup> The present study was designed to evaluate the frequency of ESBL-producing *E. coli* and the presence of *bla*<sub>TEM</sub> and *bla*<sub>SHV</sub> genes among ESBL-producing isolates. Our results indicated that, the prevalence of ESBL-producing *E. coli* was 62%. The rate of prevalence in our study was higher than other studies in different regions of Iran. In two reports from north of Iran, ESBL-producing rate among *E. coli* isolates were about 26% and 30%.<sup>25,26</sup> In a research in northeast of Iran, prevalence ESBL-producing of *E. coli* and *K. pneumoniae* were 43.9% and 56.1% respectively.<sup>27</sup> These variations may be related to geographical difference.

Phenotypic method showed that, 62% of *E. coli* isolates were ESBL producer, but *bla*<sub>TEM</sub> and *bla*<sub>SHV</sub> genes were found among 83.8% of them. ESBL-producing among isolates which were negative for *bla*<sub>TEM</sub> and *bla*<sub>SHV</sub> genes (for example, type H), may be related to other ESBL responsible genes. The genes such as, *bla*<sub>CTX</sub>, *bla*<sub>VEB</sub>, and *bla*<sub>PER-1</sub> have been reported among clinical isolates in various studies in Iran.<sup>26,28,29</sup> Our findings indicated that frequency of *bla*<sub>TEM</sub> gene was high among isolates (64.5%) which is accordance with the several studies.<sup>29,30</sup>

ESBL positive strains show resistance to other antimicrobial classes such as aminoglycosides, trimethoprim/ sulfamethoxazole and tetracyclines.<sup>31</sup> In the present study, resistance to almost all tested antibiotics among ESBL-producing isolates were more than non ESBL-producing isolates.

In present study RAPD-PCR used for typifying isolates. Strains, which had similar RAPD type, showed same antimicrobial resistance patterns approximately. Molecular investigation indicated that most prevalent genotype was A. Most of genotype A isolates harbored *bla*<sub>TEM</sub> gene. It seems that *bla*<sub>TEM</sub> mediated resistance is most common in drug resistant infections.

Most of the *bla*<sub>TEM</sub> positive isolates were clustered in an identical genotype (type A). These findings were in contrast to a previous study that the *bla*<sub>TEM</sub> positive strains were heterogeneous completely according to RAPD-PCR genotyping.<sup>32</sup> This difference may be related to type of samples. In Pokhrel RH, *et al.*'s study the isolates were collected from various specimen, whereas the isolated of present study were obtained from diarrheal patients only. Similarly, in a RAPD analysis study among ESBL-producing *E. coli* isolates at a tertiary care centre in Lebanon, genomic variability was demonstrated.<sup>33</sup> Regardless of geographic region, it seems that closely related isolates, which had *bla*<sub>TEM</sub> gene had been colonized in evaluated gastroenteritis patients

in Ilam.

In order to control the wide spread of ESBL-producing bacteria,  $\beta$ -lactam prescription should be managed carefully. Furthermore, according to recent studies, utilizing the new drugs or approaches can be effective against infectious diseases.<sup>34-36</sup>

## Conclusion

We found most susceptibility and resistance to imipenem and gentamicin among *E. coli* isolates respectively. The phenotypic method demonstrated 31 ESBL producer isolates whereas only 26 isolates carried *bla*<sub>TEM</sub> and *bla*<sub>SHV</sub> genes. Antimicrobial resistance among ESBL-producing isolates was more than non ESBL-producing isolates.

In molecular analysis, eight different RAPD types were determined. The most prevalent type was A. All of type A isolates were ESBL-producer and most of them had *bla*<sub>TEM</sub> resistance gene. Therefore, it seems that a *bla*<sub>TEM</sub> positive ESBL-producing *E. coli* was common among investigated patients.

## Acknowledgements

We would like to thank the Clinical Microbiology Research Center of Ilam University of Medical Sciences members for their friendly cooperation.

## Conflict of interests

The authors claim that there is no conflict of interest.

## References

1. Carlier M, Stove V, Wallis SC, De Waele JJ, Verstraete AG, Lipman J, et al. Assays for therapeutic drug monitoring of beta-lactam antibiotics: A structured review. *Int J Antimicrob Agents*. 2015;46(4):367-75. doi:10.1016/j.ijantimicag.2015.06.016
2. Anago E, Ayi-Fanou L, Akpovi CD, Hounkpe WB, Agassounon-Djikpo Tchibozo M, Bankole HS, et al. Antibiotic resistance and genotype of beta-lactamase producing *Escherichia coli* in nosocomial infections in Cotonou, Benin. *Ann Clin Microbiol Antimicrob*. 2015;14(1):5. doi:10.1186/s12941-014-0061-1
3. Iredell J, Brown J, Tagg K. Antibiotic resistance in Enterobacteriaceae: mechanisms and clinical implications. *BMJ*. 2016;352:h6420. doi:10.1136/bmj.h6420
4. Heidari H, Emaneini M, Dabiri H, Jabalameli F. Virulence factors, antimicrobial resistance pattern and molecular analysis of Enterococcal strains isolated from burn patients. *Microb Pathog*. 2016;90:93-7. doi:10.1016/j.micpath.2015.11.017
5. Khashei R, Sedigh HSE, Alfatemi MH,

- Zomorodian K. Antimicrobial resistance patterns of colonizing microflora on the personnel hands and noses working in the Neonatal Intensive Care Unit (NICU). *World Appl Sci J.* 2014;30:1232-7. doi:10.5829/idosi.wasj.2014.30.10.183
6. Franciczek R, Krzyzanowska B. ESBL-producing *Escherichia coli* isolated from bloodstream infections--antimicrobial susceptibility, conjugative transfer of resistance genes and phylogenetic origin. *Adv Clin Exp Med.* 2014;23(6):865-70. doi:10.17219/acem/37328
7. Fircanis S, McKay M. Recognition and management of extended spectrum beta lactamase producing organisms (ESBL). *Med Health R I.* 2010;93(5):161-2.
8. Lina TT, Khajanchi BK, Azmi IJ, Islam MA, Mahmood B, Akter M, et al. Phenotypic and molecular characterization of extended-spectrum beta-lactamase-producing *Escherichia coli* in Bangladesh. *PLoS One.* 2014;9(10):e108735. doi:10.1371/journal.pone.0108735
9. Harris PN, Tambyah PA, Paterson DL. Beta-lactam and beta-lactamase inhibitor combinations in the treatment of extended-spectrum beta-lactamase producing Enterobacteriaceae: time for a reappraisal in the era of few antibiotic options? *Lancet Infect Dis.* 2015;15(4):475-85. doi:10.1016/S1473-3099(14)70950-8
10. Dashti AA, West P, Paton R, Amyes SG. Characterization of extended-spectrum beta-lactamase (ESBL)-producing Kuwait and UK strains identified by the Vitek system, and subsequent comparison of the Vitek system with other commercial ESBL-testing systems using these strains. *J Med Microbiol.* 2006;55(4):417-21. doi:10.1099/jmm.0.46177-0
11. Woerther PL, Burdet C, Chachaty E, Andremont A. Trends in human fecal carriage of extended-spectrum beta-lactamases in the community: toward the globalization of CTX-M. *Clin Microbiol Rev.* 2013;26(4):744-58. doi:10.1128/CMR.00023-13
12. D'Andrea MM, Arena F, Pallecchi L, Rossolini GM. CTX-M-type beta-lactamases: a successful story of antibiotic resistance. *Int J Med Microbiol.* 2013;303(6-7):305-17. doi:10.1016/j.ijmm.2013.02.008
13. Tasli H, Bahar IH. Molecular characterization of TEM- and SHV-derived extended-spectrum beta-lactamases in hospital-based Enterobacteriaceae in Turkey. *Jpn J Infect Dis.* 2005;58(3):162-7.
14. Paterson DL, Bonomo RA. Extended-spectrum beta-lactamases: a clinical update. *Clin Microbiol Rev.* 2005;18(4):657-86. doi:10.1128/CMR.18.4.657-686.2005
15. Trecarichi EM, Cauda R, Tumbarello M. Detecting risk and predicting patient mortality in patients with extended-spectrum beta-lactamase-producing Enterobacteriaceae bloodstream infections. *Future Microbiol.* 2012;7(10):1173-89. doi:10.2217/fmb.12.100
16. Kanwar N, Scott HM, Norby B, Loneragan GH, Vinasco J, McGowan M, et al. Effects of ceftiofur and chlortetracycline treatment strategies on antimicrobial susceptibility and on tet(A), tet(B), and bla CMY-2 resistance genes among *E. coli* isolated from the feces of feedlot cattle. *PloS One.* 2013;8(11):e80575. doi:10.1371/journal.pone.0080575
17. Nakhjavani FA, Emaneini M, Hosseini H, Iman-Eini H, Aligholi M, Jabalameli F, et al. Molecular analysis of typical and atypical enteropathogenic *Escherichia coli* (EPEC) isolated from children with diarrhoea. *J Med Microbiol.* 2013;62(2):191-5. doi:10.1099/jmm.0.046516-0
18. Clinical and Laboratory Standards Institute, Performance Standards for Antimicrobial Susceptibility Testing; Twenty-fifth Informational Supplement., 2015 (m100-s25).
19. Mansury D, Motamedifar M, Sarvari J, Shirazi B, Khaledi A. Antibiotic susceptibility pattern and identification of extended spectrum beta-lactamases (ESBLs) in clinical isolates of *Klebsiella pneumoniae* from Shiraz, Iran. *Iran J Microbiol.* 2016;8(1):55-61.
20. Sedighi I, Arabestani MR, Rahimbakhsh A, Karimitabar Z, Alikhani MY. Dissemination of Extended-Spectrum beta-Lactamases and Quinolone Resistance Genes Among Clinical Isolates of Uropathogenic *Escherichia coli* in Children. *Jundishapur J Microbiol.* 2015;8(7):e19184. doi:10.5812/jjm.19184v2
21. Salehi TZ, Madani SA, Karimi V, Khazaeli FA. Molecular genetic differentiation of avian *Escherichia coli* by RAPD-PCR. *Braz J Microbiol.* 2008;39(3):494-7. doi:10.1590/S1517-838220080003000015
22. Seifi K, Kazemian H, Heidari H, Rezagholizadeh F, Saei Y, Shirvani F, et al. Evaluation of Biofilm Formation Among *Klebsiella pneumoniae* Isolates and Molecular Characterization by ERIC-PCR. *Jundishapur J Microbiol.* 2016;9(1):e30682. doi:10.5812/jjm.30682
23. Bradford PA. Extended-spectrum beta-lactamases in the 21st century: characterization, epidemiology, and detection of this important resistance threat. *Clin Microbiol Rev.* 2001;14(4):933-51. doi:10.1128/CMR.14.4.933-951.2001

24. Bush K. New beta-lactamases in gram-negative bacteria: diversity and impact on the selection of antimicrobial therapy. *Clin Infect Dis.* 2001;32(7):1085-9. doi:10.1086/319610
25. Alizade H, Fallah F, Ghanbarpour R, Aflatoonian MR, Taherpour A, Sharifi H, et al. Genotyping of ESBL producing uropathogenic and diarrheagenic *Escherichia coli* in southeast of Iran. *Infect Disord Drug Targets.* 2015;15(2):118-24. doi:10.2174/1871526515666150724113847
26. Rezaei MS, Salehifar E, Rafiei A, Langaee T, Rafati M, Shafahi K, et al. Characterization of Multidrug Resistant Extended-Spectrum Beta-Lactamase-Producing *Escherichia coli* among Uropathogens of Pediatrics in North of Iran. *Biomed Res Int.* 2015;2015:1-7. doi:10.1155/2015/309478
27. Zaniani FR, Meshkat Z, Naderi Nasab M, Khaje-Karamadini M, Ghazvini K, Rezaee A, et al. The Prevalence of TEM and SHV Genes among Extended-Spectrum Beta-Lactamases Producing *Escherichia Coli* and *Klebsiella Pneumoniae*. *Iran J Basic Med Sci.* 2012;15(1):654-60.
28. Jabalameli F, Mirsalehian A, Sotoudeh N, Jabalameli L, Aligholi M, Khoramian B, et al. Multiple-locus variable number of tandem repeats (VNTR) fingerprinting (MLVF) and antibacterial resistance profiles of extended spectrum beta lactamase (ESBL) producing *Pseudomonas aeruginosa* among burnt patients in Tehran. *Burns.* 2011;37(7):1202-7. doi:10.1016/j.burns.2011.05.012
29. Feizabadi MM, Delfani S, Raji N, Majnooni A, Aligholi M, Shahcheraghi F, et al. Distribution of bla(TEM), bla(SHV), bla(CTX-M) genes among clinical isolates of *Klebsiella pneumoniae* at Labbafinejad Hospital, Tehran, Iran. *Microb Drug Resist.* 2010;16(1):49-53. doi:10.1089/mdr.2009.0096
30. Shahcheraghi F, Nikbin VS, Feizabadi MM. Prevalence of ESBLs genes among multidrug-resistant isolates of *Pseudomonas aeruginosa* isolated from patients in Tehran. *Microb Drug Resist.* 2009;15(1):37-9. doi:10.1089/mdr.2009.0880
31. Branger C, Zamfir O, Geoffroy S, Laurans G, Arlet G, Thien HV, et al. Genetic background of *Escherichia coli* and extended-spectrum beta-lactamase type. *Emerg Infect Dis.* 2005;11(1):54-61. doi:10.3201/eid1101.040257
32. Pokhrel RH, Thapa B, Kafle R, Shah PK, Tribuddharat C. Co-existence of beta-lactamases in clinical isolates of *Escherichia coli* from Kathmandu, Nepal. *BMC Res Notes.* 2014;7(1):694. doi:10.1186/1756-0500-7-694
33. Baroud M, Dandache I, Araj GF, Wakim R, Kanj S, Kanafani Z, et al. Underlying mechanisms of carbapenem resistance in extended-spectrum  $\beta$ -lactamase-producing *Klebsiella pneumoniae* and *Escherichia coli* isolates at a tertiary care centre in Lebanon: role of OXA-48 and NDM-1 carbapenemases. *Int J Antimicrob Agents.* 2013;41(1):75-9. doi:10.1016/j.ijantimicag.2012.08.010
34. Andersson JA, Fitts EC, Kirtley ML, Ponnusamy D, Peniche AG, Dann SM, et al. New role for FDA-approved drugs in combating antibiotic-resistant bacteria. *Antimicrob Agents Chemother.* 2016;60(6):3717-29. doi:10.1128/AAC.00326-16
35. Kazemian H, Ghafourian S, Heidari H, Amiri P, Yamchi JK, Shavalipour A, et al. Antibacterial, anti-swarming and anti-biofilm formation activities of *Chamaemelum nobile* against *Pseudomonas aeruginosa*. *Rev Soc Bras Med Trop.* 2015;48(4):432-6. doi:10.1590/0037-8682-0065-2015
36. Amini V, Kazemian H, Yamchi JK, Feyisa SG, Aslani S, Shavalipour A, et al. Evaluation of the Immunogenicity of Diphtheria Toxoid Conjugated to *Salmonella Typhimurium*-Derived OPS in a Mouse Model: A Potential Vaccine Candidate Against Salmonellosis. *Iran Red Crescent Med J.* 2016;18(7):e34135. doi:10.5812/ircmj.34135