



MURRAY STATE
UNIVERSITY

Murray State's Digital Commons

The News

Newspapers

9-5-1968

The News, Part 4, September 5, 1968

The News

Follow this and additional works at: <https://digitalcommons.murraystate.edu/tn>

Recommended Citation

The News, "The News, Part 4, September 5, 1968" (1968). *The News*. 827.
<https://digitalcommons.murraystate.edu/tn/827>

This Newspaper is brought to you for free and open access by the Newspapers at Murray State's Digital Commons. It has been accepted for inclusion in The News by an authorized administrator of Murray State's Digital Commons. For more information, please contact msu.digitalcommons@murraystate.edu.

These Are Our Amigos



Yvonne Levoyer Leon



Jimena Berenice Almeida Cordoba



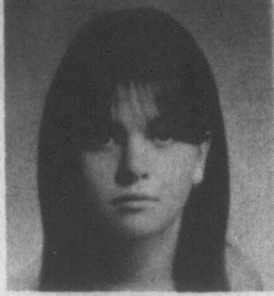
Rita Eguiguren Velez



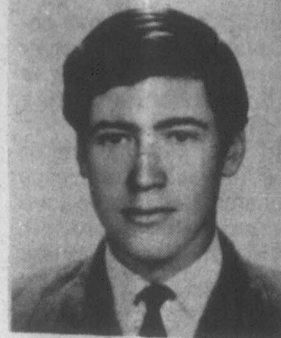
Myriam Magdalena Endara Lopez



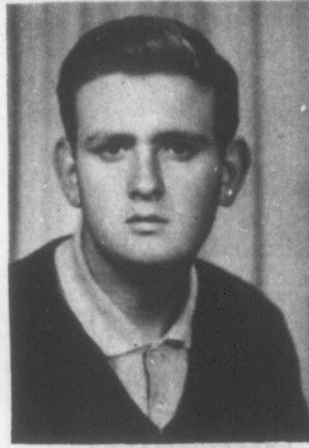
Nancy Ruby Nieto Davila



Carmen Sol Cabezas



Nelson Joaquin Lalama Nieto



Jacobo Enrique Steiner Donoso



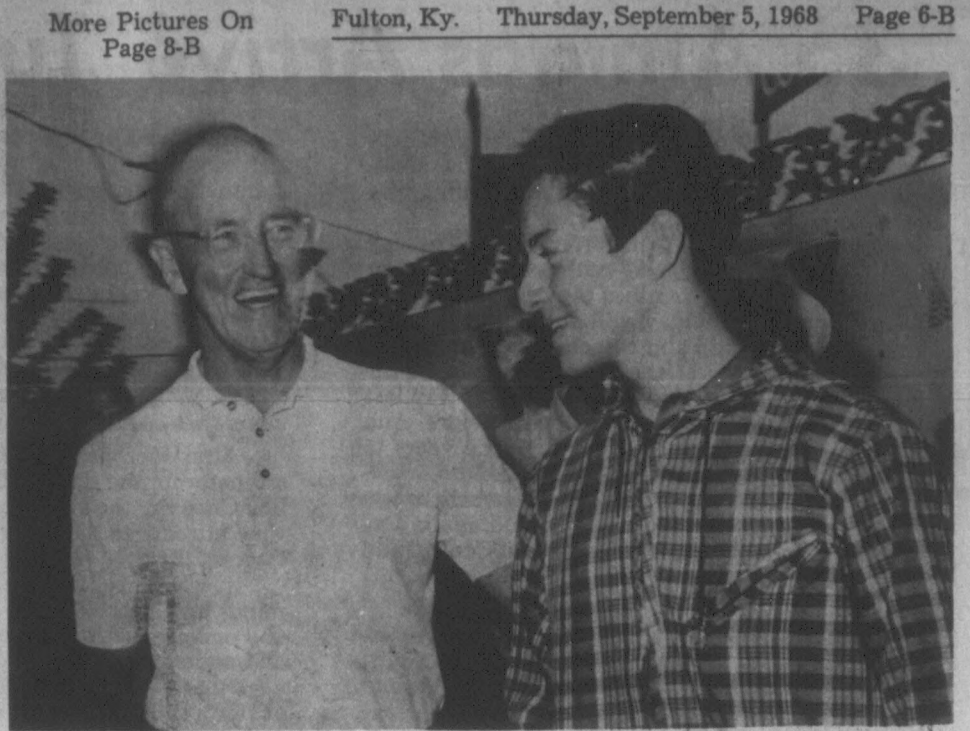
Alicia Jaramillo Eguiguren



Juan Byron Carcelen Falconi



Cecilia Chauvin Falconi



Abe Thompson certainly makes known his pleasure at receiving Amigo Angel Velazquez of Loja, Ecuador into his home for a two-week Festival visit. (Photo by Elmer Stewart)

we care



Which Of Our 4700 Stores Get The Best Beef?

Believe it or not, there are some people who think the quality of our beef varies from store-to-store. It's not true!

Every one of our Meat Departments offers the same high-quality beef, the only quality we sell... "SUPER-RIGHT" Quality. Our quality specifications for "SUPER-RIGHT" Beef are so high that some beef graded "Choice" just isn't good enough to be labeled "SUPER-RIGHT". This one "high quality" policy for all stores applies to all the meats we sell.

It is true, that where customer demand calls for it, you will find thicker steaks, double lamb chops, etc., but they are all cut from the same quality meat that is available in *every* A&P Meat Department. After all, to satisfy customer demand is just plain good business.

One other thing we want you to know. No matter where you live, if you want that thick steak, double lamb chop or any cut you don't see in the case, just ask for it. WE CARE about, and want to satisfy, every customer... and we mean *every* customer.

COPYRIGHT © 1968, THE GREAT ATLANTIC & PACIFIC TEA CO., INC.

BEEF RIB ROAST

EXCESS FAT REMOVED

4TH AND 5TH RIBS

1st 5 Ribs

79¢ LB.

85¢

SUPER-RIGHT Slab Bacon

WHOLE OR END PIECES

(CENTER PIECE LB. 55¢)

49¢ LB.

FRESH PORK BOSTON BUTTS

WHOLE (SLICED) LB. 59¢

49¢ LB.

SUPER-RIGHT Spare Ribs

SMALL LEAN & MEATY

69¢ LB.

SUPER RIGHT CENTER CUT

Pork Chops SMOKED LOIN 99¢ RIB 89¢

Beef Liver 49¢

Turkeys 39¢

Rib Steak 99¢

FAMILY WALDORF BATHROOM TISSUE

—SAVE 29¢—

3 4 ROLL PKGS. **\$1.00**

—3¢ Off Label—

GOOD BAKERS! RUSSET POTATOES

10 **79¢** LB. BAG

IONA SWEET PEAS

1 LB. 1 OZ. CANS.

99¢ **\$1.00**

—SAVE 43¢—

A&P CREAM STYLE GOLDEN CORN

1 LB. 1 OZ. CANS

69¢ **\$1.00**

—SAVE 35¢—

BUY 5, GET 1... FREE

NUTLEY MARGARINE

6 1-LB. CTNS. **99¢**

BUY 1 FOR 20¢

CRISP CARROTS

2 LB. BAG

PASCAL CELERY

30 Size Stalk

Your Choice **19¢**

HONEYDEW MELONS EACH 89¢

A&P Grapefruit Sections

4 1-LB. CANS. **\$1.00**

—SAVE 38¢—

GLAMALON SEAMLESS MESH Nylon Hosiery

3 PAIR PKG. **\$1.00**

—SAVE 17¢—

SWIFT'S Vienna Sausage

5 4-OZ. CANS. **\$1.00**

—SAVE 23¢—

BONUS VALUE THIS WEEK!

4 CEREAL BOWLS **\$1.99**

SAUCERS

22¢ each with every \$5 you spend (no limit)

COLORFUL CASUAL IRONSTONE

GROUND COFFEE

Maxwell House 1-LB. CAN **78¢**

JIF Peanut Butter 12-OZ. JAR **46¢**

CLIFF HOUSE Lunch Meat 2-LB. CAN **97¢**

SULTANA Apple Base Jelly 3-LB. JAR **59¢**

GET 14 FREE TEA BAGS

Our Own Tea BOX OF 64 BAGS **59¢**

PRICES EFFECTIVE THRU SEPT. 7

JANE PARKER ANGEL FOOD CAKE

SAVE 16¢ ONLY **39¢**

JANE PARKER WHITE BREAD

—SAVE 9¢—

4 20 OZ. LOAVES **99¢**

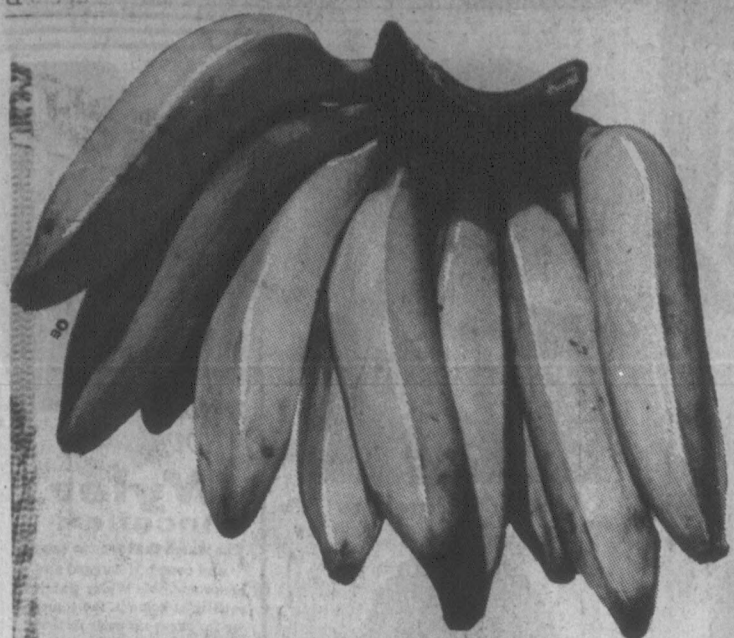
USED FURNITURE BARGAINS

- Speed Queen Automatic washer \$60.00
- Red living room suite, 2 piece \$25.00
- Green living room suite, 2-piece \$25.00
- Wringer-type washer, good \$25.00
- Electric ranges \$15 and \$20
- Cotton mattress \$5
- New GE Washer \$125.00
- Odd Divans from \$5.00
- Vacuum Cleaner \$15.00
- Bed springs, \$5 each
- Refrigerators, \$15 and up
- Linoleum rugs, regular, 79¢ yard; vinyl, \$1.10 yard, cushion floor, \$2.25 yard

Come in and browse around; we have lots of bargains not advertised!

WADE'S USED

Furniture Store Phone 472-3421



WELCOME TO THE 6th ANNUAL INTERNATIONAL



BANANA FESTIVAL

Wed Sept. 4th Thru Sat. 7th

For Many Years We Have Served The Fine Folks In Fulton And Numerous Visitors In Our Present Location. Next Year We'll Serve You In STYLE At Our New Early American Store!



IN THIS LOCATION SINCE 1936: A&P opened this store on Lake Street in Fulton at 4: p. m., Thursday, April 16, 1936, according to The Fulton News issue dated Friday, April 17, 1936 . . . and has been a Lake Street landmark here for the past 32 years.

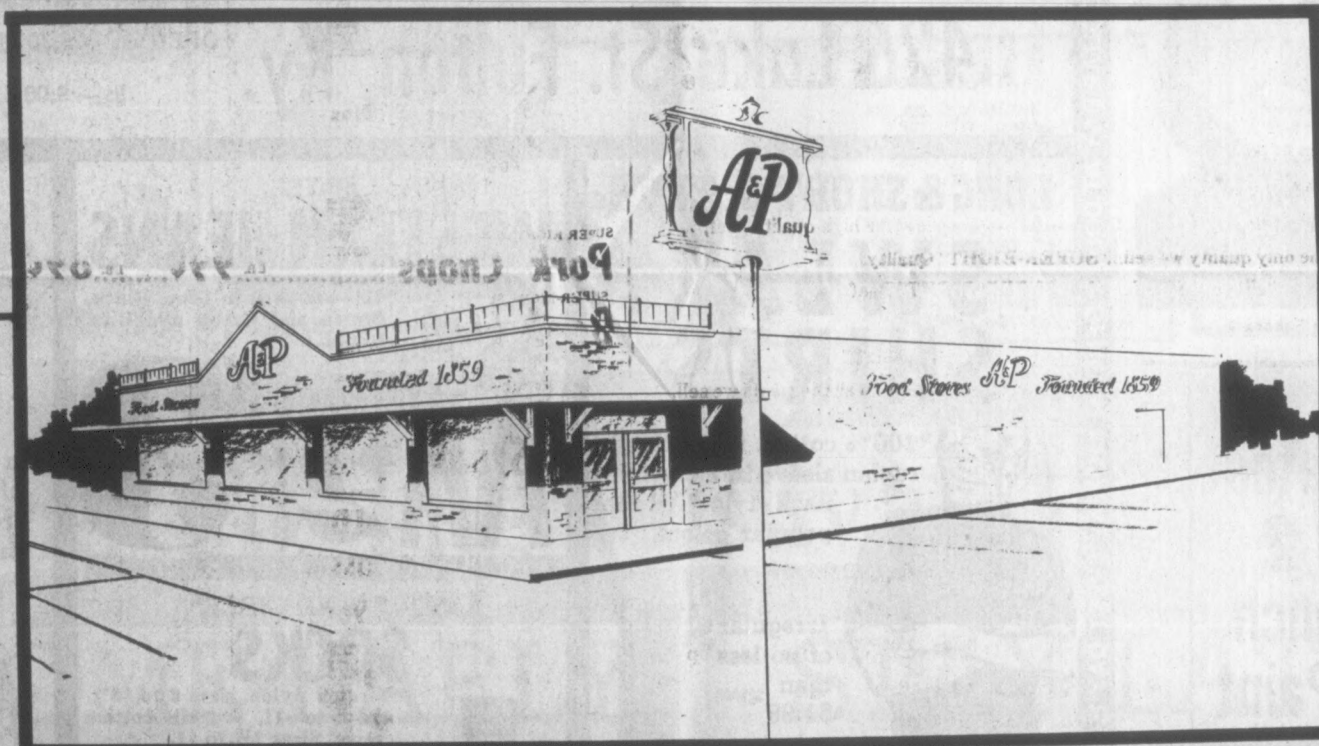
FULTON'S NEW A&P SUPER-MARKET MEARS & FOURTH ST.

MANAGER



CHARLES FLYNN

Charles has been with A&P over 24 years, is enjoying the Twin Cities and is enthusiastic over the friendliness of the people here. He likes to keep the friendliness of A&P employees high, too!



NOW UNDER CONSTRUCTION!

The exterior of the new store will feature A&P's traditional Early American styling.

Such innovations as power-checkstands, power operated entrance doors, colorful wall murals, color keyed and brightly decorated departments are planned for the new building.

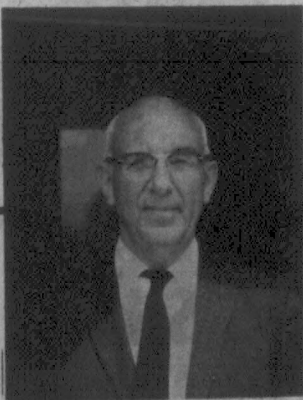
Other features to be included are a complete Health & Beauty Aids Section, Non-Foods Section and an expanded line of Gourmet and Party type foods.

New "easy-reach" self-service meat, dairy, produce and frozen food cases will be installed.

An ample size private parking area is included in the plans.

The A&P, the nation's oldest food chain, has had a store in Fulton for the past 32 years, coming here in 1936. It has been at the same location on Lake Street since it first opened for business here.

Familiar Personnel To Staff New Store!



BARNEY YATES
Meat Dept. Manager
With A&P 26 Years



ELSON MCGUIRE
Produce Dept. Manager
With A&P 23 Years



ELIZABETH WILKINS
Head Bookkeeper
With A&P 26 Years



CHARLES SINGLETON
Produce Dept.
With A&P 16 years



CAROLYN ALEXANDER
Checker
With A&P 4 Years



J. D. FIELDS
Head, stock and receiving
With A&P 22 years



JAMES HICKS
Checker
With A&P 17 years



TERRY HARRIS
Part-Time Clerk
With A&P 6 Months



JAMES ROBEY
Head, stock and receiving
With A&P 22 years



HUBERT WRIGHT
Dairy Dept. head
With A&P 18 years



WILLIAM D. YATES
Meat department
With A&P 18 years



JAMES ADAMS
Meat department
With A&P 21 years

Other friendly personnel include—Joe F. Campbell, part-time clerk with A&P for 6 months

All-Expense Trip To Ecuador

A fabulous all-expense paid trip to Latin-America and a \$1000 scholarship at the college of her choice awaits the winner of the Sixth Annual International Banana Festival, Mrs. Ward Bushart, president of the organization announced today.

The 10-day trip will include points of interest in the banana-producing countries of Central and South America that are identified with the Festival's international diplomacy program. The scholarship is given by the Price Foundation of Ormond Beach, Florida, which will award an additional \$1000 in scholarships to the four runners-up to the chosen princess.

Colonel Mercer Lee Price, visiting in Fulton this week with Festival officials has awarded more than \$6000 in scholarships in the three previous years that he has awarded these educational oppor-

tunities to the winners of the now famous International Banana Festival.

The all-expense trip to Latin-America, with the destination Quito, Ecuador for the world-renowned Quito Fiesta and bull fights, also includes the cost of a chaperone for the winner. The trip is made possible through the courtesy of Ecuatoriana Airlines and the International Colon Hotel in Quito.

The winning beauty will be the guest of the various governments she will visit. She will make many newspaper, radio, television and personal appearances while on the tour.

C. G. Morehead, Famous Kentuckian, To Show "Landmarks" At Festival

C. G. Morehead, Kentucky's "Artist of Property" will present a showing of his famed Kentucky Landmarks when the Arts and Crafts division of the Sixth International Banana Festival opens its exhibits on Wednesday, September 4, 1968 at 2:30 P. M.

Mr. Morehead's paintings of landmarks, both historic and little known, have become internationally known. The paintings are not abstract or even impressionistic. They are pure realism, with every crack in the concrete, every chipped brick showing. They intend and do bring forth a feeling of nostalgia and a sense of long-past history.

Along with Mr. Morehead's paintings, the Fulton Woman's Club has announced that an area art and judging will be held with entries open to all artists who have been residents for not less than six months of the five-state area of Kentucky, Tennessee, Indiana, Illinois and Missouri. Judging will be done in oils, water colors and acrylics and placed in professional and non-professional divisions. A \$2.00 handling fee has been established.

The Kentucky Arts Commission,

which is highly enthusiastic about this area exhibit, has indicated that Mr. Trond Sandvik, of the faculty of the Art Department of the University of Kentucky, Lexington, will judge the paintings entered in the competition. Mr. Sandvik will also assist in the hanging of the pictures after the judging.

Mrs. J. R. Powell, Jr., chairman of the Arts Division, has requested that all paintings entered in competition must be in by Saturday, August 31, 1968. For further information write International Banana Festival Headquarters, Fulton, Kentucky.

An area Craft Show will be open to viewing along with the Art Show. This is the first time that an all-area crafts display will be featured at the Banana Festival. The artistry of craftsmen will be in many and varied categories. On view will be work in weaving, creative stitchery, ceramics, pottery, jewelry, silversmithy. Three will also be some sculpture. Mrs. W. C. Whitel, chairman of the Crafts division, stated that it is hoped that this will be the largest exhibit of its kind ever shown in this area.

Terry-Norman PTA Announces New Officers

Mrs. Bill Homra, president of Terry-Norman PTA is today announcing the standing committees for the coming year.

Other officers include Mrs. Charles Wade Andrews, first vice president; Mrs. Herbie Hunt, second vice president; Mrs. Bobby Craven, secretary, and Mrs. Jake Yates, treasurer.

Standing committees are: Membership—Mrs. James Butts, chairman, Mrs. Dick Meacham, Mrs. Billy Joe Chandler; program—Mrs. Herbie Hunt; finance—Mrs. Jake Yates, Mrs. Robert Atwill; health and safety—Mrs. Glyn M. Sams, chairman, Mrs. James Hutchens, Mrs. Charles W. Andrews; hospitality—Mrs. Clyde Williams Jr., chairman, Mrs. Charles Martin, Mrs. Frank Welch, and Mrs. W. Z. Cash; publication—Mrs. Jimmy Weaks; room representative—Mrs. John Sullivan; historian—Mrs. Robert Van Dorne, chairman, Mrs. Don Campbell;

Character and spiritual life—Mrs. Debby Halley; publicity—Mrs. Don Campbell, chairman, Mrs. Robert Van Dorne.

Room mothers: first grade—Mrs. Gene Baker, Mrs. Glynn M. Sams; second grade—Mrs. Bobby Halley, Mrs. Ray Williams; third grade—Mrs. Bill Homra, Mrs. John Sullivan; fourth grade—Mrs. Don Campbell.

Mothers assisting at registration at Terry Norman included Mesdames John Sullivan, Robert Van Dorne, Jack Graves, Charles Wade Andrews and Glyn Sams.

FRIDAY NIGHT FISH FRY!

5 to 12 p. m.
All you can eat \$1.25
Children 75c

DERBY RESTAURANT
Fulton, Ky.

Fresh Caught Fish
Hush Puppies, Slaw
Tarter Sauce
French Fries

IT'S FESTIVAL TIME!



Have Fun And
KEEP YOUR CAR
ON THE GO

With Expert Service At Cecil!

Paint and Body Repair

ALIGNMENT
BRAKE WORK
MOTOR TUNEUP
MAJOR OVERHAUL

Call 472-9072

For
Cecil McDaniel or
Jim Tom Cashion

Cecil's Garage

Next door to Treas & Menees Ser. Sta. Lake St

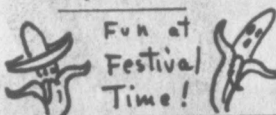
WELCOME!
FESTIVAL VISITORS!

**BUCK'S DRIVE-IN
LIQUOR STORE**
EAST FOURTH STREET

COMPLETE SELECTION OF
Bourbons — Gins — Scotches
— Wines —
ICE - COLD BEER
TO GO

An Uplifting Fact

NEW YORK—In the course of 540 million miles of travel by passengers in U.S. elevators — 2,000 times the distance from the earth to the moon — there were only 17 fatal accidents in a recent year.



With JIM PRYOR
Agricultural Agent
Illinois Central Railroad

HIGH FARM CREDIT DEMANDS

Credit is essential for successful agricultural production. Farming as it was known years ago is fast fading from the picture, while demands for more credit upon the part of those farmers who are left in business is increasing daily. Although farm credit is available from many sources and in sufficient amounts in most cases, judgment must be exercised wherever it is to be used and credit institutions need also to be aware of the needs and problems when money is to be loaned to farmers.

The adoption of technology on many farms has resulted in a marked increase in capital requirements for farming. A high level of investment and the need for large sums for operating expenses has resulted in an increase in the amount of credit needed.

There are many sources of farm credit today and it has many broad applications. In studies made of what farm credit is used for, it has been found that sixty per cent of those who borrow use it for crop production and related uses.

Commercial Banks still are the most important sources of farm credit. Production Credit Associations lend much money to farmers and in some areas of the cotton growing sections, ginners and merchants still represent a high percentage of the money loaned for production of crops. Many times, they in turn are financed by Banks and other related institutions.

Since farming is becoming a big time business, there will in the future be much more demand placed upon those who finance farmers to increase even their present lending ability and there is also another marked change that is to be needed in the years ahead. There will be more need for longer term plans for repayment of many of these loans.

Farm stored grain should be checked periodically. The top foot should be examined for presence of insects. A broomstick or long rod with thermometer attached should be pushed into the grain at several places. If one reading is several degrees warmer than others, insect activity is likely.

PORTLAND, Maine—About 20 million tons of import cargo each year are handled by Portland's eight miles of wharves. Mainly it is oil on its way from the Persian Gulf to Montreal.

Cork is used in insulation, floor coverings and many other products, but bottle stoppers and liners for bottle caps still create the main demand for the product.

NEW LATEX HOUSE PAINT

MILDEW AND FUME-RESISTANT PAINT FILM
For wood, brick, stucco, metal, concrete block, all masonry.

- Exclusive NEW ingredient combats mildew growth on paint film.
- Stain-resistant. Better adhesion and durability.
- Dries in 30 minutes. Clean up with warm, soapy water.
- Fade-resistant colors. Whites stay white, too!



PITTSBURGH PAINTS keep that JUST PAINTED look longer!

Fulton Paint and Glass Co.

301 MAIN ST.

472-3201

Welcome

Sixth
International
**BANANA
FESTIVAL**
Guests!

Hornbeak Funeral Home

WELCOME

FOR ALL YOUR

- Machine Shop Needs
- Auto Parts
- Tractor Parts
- Briggs and Stratton, Clinton Engines

Phone 479-1912 205 E. STATE LINE

**DUKE'S
AUTO PARTS**

For the sure touch of a decorator...
use Martin Senour
Poly-Flow Odorless Vinyl Flat

Smart new colors, the right colors are yours to choose in Poly-Flow odorless vinyl flat. Smooth, easy painting. Quick drying. Washable.

**EXCHANGE
FURNITURE CO.**

107 Commercial 472-1583

Welcome To The 6th Annual
**INTERNATIONAL BANANA
FESTIVAL**
September 4, 5, 6, 7, 1968

TRY ONE OF OUR DELICIOUS
BANANA SHAKE
BANANA SPLITS
BANANA SUNDAE

We invite you to come by and taste the best food in town!

MEET YOUR FRIENDS AT THE
DARI-CREAM
VISITORS WELCOME!

STATE LINE FULTON, KY.

WELCOME

FESTIVAL VISITORS

FULL VARIETY OF

SANDWICHES PLUS

CHICKEN — SHRIMP — PIZZA

— Try one of our delicious shakes —

"FROSTED MUG OF
ROOT BEER"
KW
DRIVE-IN
Ice - Cold Drinks
Hot Sandwiches
CURB SERVICE



These ladies really had a smile in their hearts Tuesday night when the Amigos arrived, but they wanted to be plenty sure that each Amigo met the "right families" for their two-week visit here. At left is Mrs. Florence Ballesteros and right is Mrs. Bill Fenwick, Amigo chairman.

The promise
of power...
the backbone
of freedom.



THE U. S. ARMY RESERVE

WELCOME!

Visitors to the
Sixth annual
International
Banana Festival

September 4 - 5 - 6 - 7

Drop by for a visit with us!



WESTERN AUTO STORE

204 LAKE STREET

Shainberg's

Sends them back to school
Apple - bright and Shiny!



We'll give you credit
for being a smart
thrifty shopper!
OPEN A
SHAINBERG'S
CHARGE ACCOUNT

REELFOOT SHOPPING
CENTER
OPEN DAILY 10 A.M.
CLOSE 6 P.M.
MON. thru THURS.
OPEN TIL 9 FRI. & SAT.

Boys
Permanent-
pressed
SPORT
SHIRTS

Regularly \$1.99

99¢

Wonderful collection! Save half price! Button down collars, topnotch tailoring, excellent quality fabrics are 100% cottons or blends of polyester and cotton in woven plaids, prints, stripes, solid colors. Sizes 6 - 18. Hurray in for first pick!

Merchants Will Sponsor Festival Window Contest

The Merchants Division of the Chamber of Commerce is again sponsoring a window decorating contest for the sixth annual International Banana Festival.

Purpose of the contest is to provide a color decor for the twin cities biggest event of the year. It is hoped that every merchant will participate. Bob Ray, chairman of the Window Decorating Contest, says, "There is no better way for a retail establishment to say Welcome than with its windows."

A Cordial Welcome ---- To The International Banana Festival

--- and let AIRLENE Show you how you can have that Warm Central American Climate in your home all winter!

Make sure the Warm Air Heating systems you install include these Quality and Performance features

PERFORMANCE TESTED



Every Rheem gas-fired furnace is fire-tested and given a 43 point inspection for operating efficiency under actual operating conditions with all controls hooked up and burners ignited at the factory. Every furnace must function perfectly or it isn't delivered. All Rheem gas furnaces carry AGA approval.

NATIONALLY RECOGNIZED CONTROLS



Every Rheem Gas and Oil fired furnace is equipped with Nationally Accepted and guaranteed controls. Control placement allows easy—fast hook up and immediate access for check-ups and service.



Available on the Rheemglas models to eliminate rust and corrosion. Assures longer furnace life and maximum heat transfer. Conversion to air conditioning can be made without fear of rust caused by condensation. Guaranteed for a full 10 years.



CAST IRON BURNERS

All Rheem furnaces are equipped with cast iron burners to assure quiet—lifetime operation. Special casting eliminates warping and provides maximum heat transfer to air stream.



WIDE SELECTION OF MODELS AND SIZES

15 gas and 5 oil fired models including the famous Rheemglas furnace offer a wide range of types and sizes to fit every need, space requirement, even zero installations! All Rheem furnaces are designed for the addition of the revolutionary Rheemaire air conditioning system.



DYNAMICALLY BALANCED BLOWER FOR QUIET OPERATION

Blower and motor on all Rheem furnaces are dynamically balanced and have rubber cushion mounts. Blower is mounted on track-slides out like a drawer for easy inspection should servicing become necessary.

PROPANE GAS — GAS EQUIPMENT
WE LEASE TANKS

Airlene Gas Co.

603 West Parkway Fulton, Ky.
Phone 472-1353

You can rely on Rheem... the BIG NAME in comfort products for the home

U. S. GOVERNMENT INSPECTED

FRYERS 29^c **CHUCK ROAST 39^c**
LB. WHOLE U. S. CHOICE BLADE CUT LB.

Cut-Up	Roasting	U. S. Choice Center Cut	U. S. Choice - English Cut
FRYERS lb. 33c Chicken	CHICKENS lb. 39c Krey or Reelfoot - All Meat	CHUCK ROAST lb. 49c U. S. Choice	ROAST lb. 59c U. S. Choice - Boneless
LIVERS lb. 89c Pork	BOLOGNA lb. 59c Fresh - Meaty	ARM ROAST lb. 69c Reelfoot	CHUCK-ROAST lb. 69c U. S. Choice
CUTLETS lb. 69c	NECK BONES lb. 19c	FRANKS 12-oz. pkg. 49c	CHUCK STEAK lb. 69c

SMOKED PICNICS 39^c **SLICED BACON 59^c**
Reelfoot 6 to 8 lb. LB. Houser Valley LB.

REELFOOT LARD
4 Lb. Carton
59^c

REGISTER
FOR MONTH'S FREE LIVING \$100
No Obligation Register As Often As You Enter Our Store
IN FREE MDSE.
YOU COULD BE THE LUCKY ONE

COLONIAL
1 1/4 lb. Loaf
Big or Super Value BREAD
5 FOR \$1.

INSTANT COFFEE
6-oz Jar Maxwell-House
79^c

CHEER with additional \$5.00 purchase excluding milk and tobacco products
WASHING POWDER
GIANT SIZE BOX **39^c**
Limit 1 Please

EGGS
GRADE A - SMALL
3 DOZ. \$1.

Jame's Best Brand 4-oz. VANILLA EXTRACT ea. 35c	75 Ft. Roll Reg. 83c ALCOA WRAP Now ea. 69c	40-oz. Box Reg. 59c SUPER SUDS now 49c	200 Count Paper NAPKINS ea. 29c
Swans Down 19-oz. CAKE MIXES 4 for \$1.00	Van Camp 6 1/2-oz. Can TUNA 4 cans \$1.00	First Quality 100 Count PAPER PLATES ea. 69c	Pre-Sweetened 6-10 Paks. FLA-VOR-AID pak. 39c

MERIT SALTINE CRACKERS **23^c**
LB.

SWANSDOWN. CAKE-MIX **4 BOXES \$1.00**

12-oz. Liquid Reg. \$1.19 FASWEET ea. 99c	Biltmore 12-oz. LUNCHEON LOAF ea. 39c	Kraft Black Rind 12-oz. LONG HORN CHEESE 79c	Zestee 18-oz. STRAWBERRY ea. 49c
Hyde Park 6-oz. MUSTARD ea. 10c	46-oz. Unsweet-Stokely GRAPE FRUIT Juice 2 for 89c	Pal Brand 2 1/2 Lb. Jar PEANUT BUTTER Jar 99c	Pet 12-Oz. Size INSTANT PET ea. \$1.39

RUSSETT U. S. No. 1 NEW CROP IDAHO WHITE POTATOES **79^c**
10 lbs.

BACK TO SCHOOL JONATHAN OR GOLDEN DELICIOUS BAG APPLES **49^c**
4 lb.

U. S. NO. 1 LARGE HEADS LETTUCE **35^c**
2 HEADS

MICHIGAN JUMBO GREEN STALKS CELERY **23^c**
EA.

Fancy RED BELL PEPPERS 3 for 25c	Ex - Fancy Jumbo RED ONIONS lb. 19c	Fancy GREEN ONIONS 10c	U. S. No. 1 Red POTATOES 10 lb. 59c
Large EGG PLANTS lb. 25c	Snowy Heads CAULIFLOWER ea. 49c	Fancy Green BELL PEPPERS ea. 5c	Frozen 20-oz. Winter Garden CUT CORN ea. 39c

DOUBLE QUALITY STAMPS ON WEDNESDAY Plus - Low - Low Prices

EW JAMES AND SON SUPER MARKET
SOUTH FULTON, TENNESSEE

DOUBLE QUALITY STAMPS ON WEDNESDAY Plus - Low - Low Prices