

Myocardial remodelling and tissue characterisation by cardiovascular magnetic resonance (CMR) in endurance athletes

Sandra Pujadas,^{1,2} Maite Doñate,¹ Chi-Hion Li,^{1,2} Soraya Merchan,¹ Ana Cabanillas,² Xavier Alomar,² Guillem Pons-Llado,^{1,2} Ricard Serra-Grima,¹ Francesc Carreras^{1,2}

To cite: Pujadas S, Doñate M, Li C-H, *et al*. Myocardial remodelling and tissue characterisation by cardiovascular magnetic resonance (CMR) in endurance athletes. *BMJ Open Sport & Exercise Medicine* 2018;**4**:e000422. doi:10.1136/bmjsem-2018-000422

Accepted 3 October 2018

ABSTRACT

There is still some controversy about the benignity of structural changes observed in athlete's heart, especially regarding the observation of increased biomarkers and the presence of myocardial fibrosis (MF).

Aim Our purpose was to evaluate by cardiovascular magnetic resonance (CMR) the presence of diffuse as well as focal MF in a series of high-performance veteran endurance athletes.

Methods Thirty-four veteran healthy male endurance athletes, still being in regular training, with more than 10 years of training underwent a CMR. A cardiopulmonary exercise test was also performed to assess their maximal physical performance. The control group consisted in 12 non-trained normal individuals.

Results We found an increase in both, right and left ventricular (LV) volumes in the athlete's group when compared with controls. There was no increase in indexed LV myocardial mass despite of a significantly increased maximal myocardial wall thickness in comparison to controls. Native T1 values and extracellular volume (ECV) were normal in all cases. We did not find differences in native T1 values and ECV between both groups. In three athletes (9%), non-*ischaemic* late gadolinium enhancement (LGE) was observed. We did not find a correlation between total training volume and presence of LGE or with the ECV value.

Conclusions Our results show that the majority of veteran endurance athletes present with myocardial remodelling without MF as a physiological adaptive phenomenon. In the only three athletes with focal MF, the LGE pattern observed suggests an intercurrent event not related with the remodelling phenomenon.

INTRODUCTION

Structural changes observed in athlete's heart such as increased left ventricular (LV) volume, increased LV wall thickness and mass have been generally considered as benign consequences of long-term physical training. However, several studies have demonstrated that acute high-intensity endurance exercise such as marathon or ultramarathon courses

What are the new findings?

- ▶ Myocardial changes induced by long-term endurance exercise do not result in pathological hypertrophy or myocardial fibrosis.

How might it impact on clinical practice in the near future?

- ▶ These findings allow a better knowledge of athlete's heart in veteran endurance athletes. Cardiovascular magnetic resonance results show that structural changes observed in these population correspond to a physiological adaptive phenomenon.

is associated with transient decrease in right ventricular systolic function.^{1–3} Increases in cardiac biomarkers of myocardial injury, such as troponine, have been reported to occur immediately after performing these activities.^{4,5} Recently, it has been described in an experimental study an association between long-term vigorous endurance exercise, arrhythmias and myocardial fibrosis (MF).⁶

Cardiac magnetic resonance (CMR) imaging allows the detection of replacement MF by means of the technique of late gadolinium enhancement (LGE). More recently, the estimation of the longitudinal magnetic relaxation time T1 of the myocardial tissue, from which a calculation of the myocardial extracellular volume (ECV) may be derived, this being a reliable measure of diffuse interstitial fibrosis.

Although some CMR studies have already shown the presence of focal MF in athletes,^{7,8} it is not known at present whether high-intensity endurance exercise might result in diffuse MF.



© Author(s) (or their employer(s)) 2018. Re-use permitted under CC BY-NC. No commercial re-use. See rights and permissions. Published by BMJ.

¹Cardiac Imaging Unit, Cardiology Department, Hospital de la Santa Creu i Sant Pau, Autonomous University of Barcelona, Barcelona, Spain

²Radiology Department, Clínica Creu Blanca, Barcelona, Spain

Correspondence to

Dr Sandra Pujadas;
sandrpujadas@gmail.com

Our purpose was to evaluate by CMR the presence of diffuse as well as focal MF in a series of high-performance veteran endurance athletes.

METHODS

Study population

Thirty-four veteran healthy male (age 48.17±7.48 years) endurance athletes (runners), still being in regular training, with more than 10 years of training and with marathon times below 3 hours and 15 min, were invited to undergo a CMR. A cardiopulmonary exercise test was also performed in all individuals to assess their maximal physical performance. The control group consisted of 12 untrained healthy males pair-matched for age and body surface area. Exclusion criteria included any history of cardiopulmonary disease and standard contraindications for CMR imaging.

The study was conducted in accordance with the standards set by the 'Declaration of Helsinki' and approved by the ethics committee of our Institution.

Cardiovascular magnetic resonance

All CMR studies were performed with a 1.5 T magnet (Avanto Fit, Siemens; Erlangen, Germany). LV and RV mass and volumes were obtained from steady-state free precession cine imaging covering the entire LV in the short-axis: retrospective ECG-gated SSFP cine sequence (TR=74 ms, TE=1.26 ms, slice thickness=8 mm, no gap, voxel size 1.3×1.3×8 mm). Cine images were analysed by means of dedicated software (QMass 7.1 Medis, Leiden, The Netherlands).

Mid LV short-axis native (precontrast) T1 maps were obtained using a previously described MOLLI sequence.⁹

A single bolus of 0.2 mmol/kg of gadobutrol (Gadovist, Bayer Lab. Barcelona, Spain) was administered. A 3-dimensional inversion recovery segmented gradient echo sequence (spatial resolution 1.3×1.3×8 mm) was acquired 8–10 min after contrast administration to assess LGE. This sequence was used in multiple short-axis planes using the same orientation as the cine MR images.

Post-contrast T1 maps were acquired using the same MOLLI scheme 15 min after contrast administration.

Focal MF was considered to be present when an intramyocardial region with hyperintense signal (>5 SD values of the signal intensity at a remote area) was detected in the LGE images.

Diffuse MF was assessed using T1 mapping sequences by means of calculation of the ECV according to the equation: $ECV = \Delta 1 / T1_{myocardium} / \Delta 1 / T1_{blood}$ (1-haematocrit).¹⁰ Haematocrit was obtained at the moment of the CMR study.

Cardiopulmonary exercise test

Exercise test with gas consumption was performed in all athletes on an Ergo-Run premium 8 ergometer (Daum-electronic, Fürth, Germany) using a previously

validated¹¹ progressive protocol. After a warm-up of 3 min at 6 km/hour with a fixed ramp of 3%, the velocity was increased 1 km/hour every minute until exhaustion. A simultaneous breath by breath gas exchange device (Power-Cube, Ganshorn, Neuenkirchen, Germany) was used to measure: oxygen consumption (VO₂) (in L/min and ml/kg/min); carbon dioxide production (VCO₂) (in L/min); respiratory quotient (RER); anaerobic threshold (UAn) based on heart rate, percentage of VO₂ achieved at the UAn (%VO₂) and ventilation/minute (VE) (in L/min). Signals from a 12 lead ECG were displayed continuously using a Cardiovit AT-104 system (Schiller España, Madrid, Spain). Blood pressure was measured at 3 min intervals during exercise and for the first 3 min after exercise, using a manual sphygmomanometer. Criteria for termination of exercise test were to yield physical exhaustion or a plateau in VO₂. Maximal cardiopulmonary exercise test was defined by a plateau in VO₂ and/or achievement of a peak RER of ≥1.10

Statistical analysis

Continuous variables are presented as mean±SD when normally distributed and median±IQR when not. Normal distribution of data was assessed by using Shapiro-Wilk test.

To analyse the differences between pairwise matched athletes and control subjects a Student's t-test was used. Wilcoxon signed-rank test was performed for non-normally distributed variables. A multivariate-logistic regression model was used to control for confounding baseline variables. All p<0.05, 2-tailed approach, and power of 80% were used in all tests.

RESULTS

Patient demographics and functional measures are summarised in table 1. VO₂ values shown in the athlete's group were in the range of well highly trained subjects according to reference values.¹¹

CMR results are shown in table 2. We found an increase in both right and LV volumes in the athlete's group when compared with controls. Left and right ejection fractions were preserved in all patients. There was no increase in indexed LV myocardial mass despite of a significantly increased maximal myocardial wall thickness in comparison to controls.

Native T1 values and ECV were normal in all cases. We found significant differences between athletes and control subjects in the univariate analysis. When corrected by the haematocrit in the multivariate analysis, we did not find differences in native T1 values and ECV between both groups (table 2).

In three athletes (9%), non-ischaemic LGE pattern was noted: mesocardial in septal-apical wall, subepicardial in the inferior apical wall and mesocardial in the lateral wall (figure 1).

Table 1 Demographic and functional characteristics of endurance athletes and control subjects

	Athletes (n= 34)	Controls (n= 12)	P values
Age (years)	48.18±7.48	42.36±13.43	n.s
BSA (m ²)	1.80±0.11	1.89±0.14	n.s
Training volume (hours/week)	9.38±3.52	3.08±1.52	<0.05
Training history (years)	28.06±10.84	9.38±3.02	<0.05
Rest heart rate (bpm)	56.03±8.87	70.33±15.42	<0.05
VO ₂ peak (mL/min/kg)	60±6.53		
Peak heart rate (bpm)	176.27±10.32		
RER max	1.14±0.07		

Data are presented as mean value±SD. VO₂ peak, maximal oxygen uptake. BSA, body surface area; RER max, maximal respiratory exchange ratio.

We did not find a correlation between total training volume and presence of LGE nor with the ECV value.

DISCUSSION

In this study, we have examined a cohort of veteran endurance athletes and a paired untrained control group to evaluate the consequences of long time practice of intense endurance exercise on myocardial structure to find that:

1. Cardiac remodelling in endurance athletes is characterised by a balanced increase in left and right ventricular volumes and in maximal LV wall thickness, despite of normal indexed myocardial mass.
2. This remodelling process does not involve an expansion of the interstitial space by MF, as proven by the normal values of the ECV, suggesting a physiological adaptive phenomenon in these highly trained individuals.

Table 2 CMR results

	Athletes (mean±SD)	Controls (mean±SD)	P values	
LVEDV (mL)	193.65±31.67	155.92±26.30	<0.001	
LVEDV index (mL/m ²)	107.53±15.94	81.33±10.71	<0.001	
LVESV (mL)	72.47±15.98	57.75±13.96	<0.001	
LVESV index (mL/m ²)	40.29±8.59	30.08±6.32	<0.001	
LVEF (%)	62.53±4.89	63±5.15	0.779	
RVEDV (mL)	204.44±37.50	165.58±31.90	0.003	
RVEDV index (mL/m ²)	113.59±19.83	86.42±13.57	<0.001	
RVESV (mL)	76.12±20.69	64.67±17.15	0.086*	
RVESV index (mL/m ²)	42.38±11.61	33.83±7.85	0.023*	
RVEF (%)	62.91±6.24	61.5±5.27	0.488	
Ratio RV-LV	0.96±0.10	0.96±0.14	0.968	
LVM (g)	124.59±22.13	124.54±32.23	0.996	
LVM index (g/m ²)	69±11.05	65.25±15.73	0.372	
Max wall thickness (mm)	11±1.33	8.50±2.65	<0.001*	
LA area (cm ²)	28.03±3.71	24.67±4.16	0.013	
T1 mapping				
Native T1 septal (ms)	943.59±52.58	984.13±36.82	0.006*	NS
Native T1Lat (ms)	925.3±45.90	960.25±29.77	0.029*	NS
ECV septal	0.25±0.02	0.22±0.02	<0.001	NS
ECVLat	0.24±0.04	0.17±0.08	0.006	NS
Haematocrit (%)	0.42±0.02	0.46±0.04	0.001*	S
DE*	3(9%)	0		

CMR, cardiovascular magnetic resonance; DE, delayed-enhancement; ECV, extracellular volume; LA, left atrial; LVEDV, left ventricular end-diastolic volume; LVEF, left ventricular ejection fraction; LVM, left ventricular mass; RVEDV, right ventricular end-diastolic volume; RVEF, right ventricular ejection fraction.

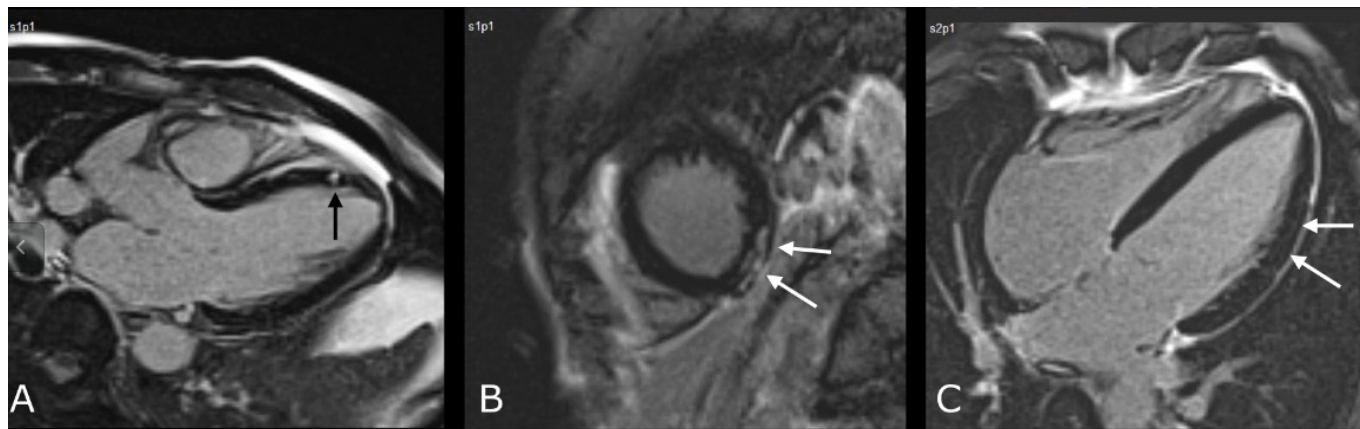


Figure 1 LGE images of the three athletes showing MF. (A) A 55-year-old athlete who has been training 10 hours/week in the last 28 years. Mesocardial LGE in the apical-septal wall is shown in a 3-chamber view image. (B) A 51-year-old athlete training 7 hours/week in the last 30 years. The short-axis view shows subepicardial LGE in the inferior apical wall. (C) A 55-year-old athlete training 8 hours/week in the last 30 years. Mild intramyocardial LGE in the lateral wall is shown in the 4-chamber view. LGE, late gadolinium enhancement; MF, myocardial fibrosis.

3. In 9% of athletes, however, focal MF was observed, which could be due to an intercurrent phenomenon of uncertain origin.

Morphological and functional parameters

Cardiac adaptation in veteran, high-performance endurance athletes is characterised by balanced increase of LV and RV volumes, increased LV wall thickness and myocardial mass,^{12 13} leading to what is known as the athlete's heart. Accordingly, our cohort showed significantly enlarged left and right ventricles compared to control subjects, with no significant differences in the LVEDV-to-RVEDV ratio. Also, athletes showed an increase in absolute wall thickness compared to control subjects. However, in accordance with previous reports,¹⁴ values of indexed LV mass are within normal ranges. The present study also proves the preservation of LV and RV ejection fraction in lifelong endurance veteran athletes.

Focal myocardial fibrosis

LGE was observed in three (9%) athletes, all of them showing a non-ischæmic pattern (figure 1A–C). Furthermore, in two of them, delayed-enhancement patterns were highly suggestive of a previous episode of clinically undetected myocarditis (figure 1B,C).

There is still some controversy regarding on whether repeated extreme endurance exercise might result in MF. Benito *et al*⁶ exercised rats on a treadmill and observed diffuse fibrosis in the atria and right ventricle which resulted in ventricular arrhythmia. CMR studies have also reported an apparently high incidence of focal MF in veteran athletes: Breuckmann *et al*⁷ examined 102 healthy veteran male marathon runners and reported an unexpectedly high prevalence of LGE (12%), although it was not significantly different from that of age-matched control participants (4%, $p=0.07$). Another study¹⁵ found focal MF by LGE in 6 of 12 elite veteran athletes but not in 20 age-matched controls or in 17 young endurance

athletes. The presence of LGE in veteran athletes was significantly associated with the training volume, supporting a link between life-long endurance exercise and MF.

More recently, La Gerche *et al*¹⁶ showed LGE in 5 of 40 (13%) athletes studied which was confined to the interventricular septum in all cases.

In two of the three athletes, we found a LGE pattern highly suggestive of a previous myocarditis as the potential cause. It would be reasonable to believe that continued exercise training may accelerate myocardial damage and MF during silent myocarditis.¹⁷

MF in the RV insertion point has been reported in up to 19% of athletes in the literature,¹⁸ and it is an important topic of debate. It is speculated that the RV distention during exercise may result in chronic structural changes of the myocardial architecture, mainly in the septal points of insertion of the right ventricular wall. In our study, we found mild LGE in the inferior septal RV insertion in 23% of athletes. However, we did not consider this finding as true reactive MF. In fact, this finding was also observed in 36% of controls (figure 2). We believe that, as previously reported,^{17 19} plexiform fibrosis is a normal feature of the insertion-region anatomy that may result in contrast pooling within this area.

DIFFUSE MYOCARDIAL FIBROSIS

Importantly, we did not find significant differences in ECV in athletes compared with control group. Extracellular expansion leads to higher ECV measurements. Thus, our findings support that cardiac remodelling in veteran athletes is a physiological adaptive phenomenon.

Previously, McDiarmid *et al*²⁰ showed in young athletes that the increase in LV mass is due to increased cellular mass which, in turn, results in a relative decrease in ECV compared with controls. These findings also support the hypothesis of a physiological adaptation instead of pathological hypertrophy with associated interstitial fibrosis.²¹

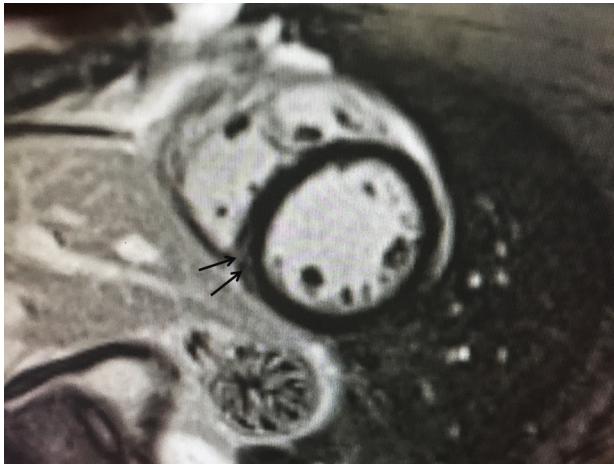


Figure 2 A 40-year-old man with a training history of 2 hours/week during 6 years (Control group). A mid-ventricular short-axis view shows mild LGE in the inferior RV-LV junction.

However, in the present study, we did not find significant differences in ECV between athletes and controls. This discrepancy may be explained by differences in athlete population between McDiarmid's study and ours. Our study comprised veteran endurance athletes (mean age: 47.18 ± 7.48), much older than the study subjects from their study (31.7 ± 7.7 years), and our results are according to a previous study by Mordi *et al.*⁹² also with veteran endurance athletes in which they did not find a decrease in ECV in athletes compared with sedentary controls. More studies will be required to confirm whether there are significant differences in ECV between young and veteran athletes.

In our population of veteran runners with more than 10 years of intense training, we did not find a correlation between total training volume and MF of any kind and neither between ECV and maximal wall thickness nor LV mass. Thus, according to our results, running at high doses and intensities does not seem to result in developing interstitial fibrosis. However, more studies are needed including young and veteran athletes and from different sports.

LIMITATIONS

Only 46 subjects were enrolled in this study, which may be a limitation when comparing structural cardiac changes between the two groups, particularly when assessing myocardial LGE patterns.

A cardiopulmonary exercise test to the control group was not performed, as the only purpose of this test was to show the excellent athletic performance of the study group. The present study is only referred to Caucasian male veteran athletes as we did not study black, young or female athletes.

CONCLUSION

Our results show that the majority of veteran endurance athletes present with myocardial remodelling without MF

as a physiological adaptive phenomenon. Furthermore, in the only three athletes with focal MF, the LGE pattern observed suggests an intercurrent event not related with their modelling phenomenon.

Acknowledgements We would like to thank Cors Units Foundation for their disinterested support of this project.

Contributors Conception and study design: SP, FC and RS-G. Data collection: MD, AC and XA. Data analysis: C-HL. Interpretation of data and results: SP, FC and SM. Writing the draft: SP and SM. Reviewing manuscript: FC and GP-L. All authors read and approved the final manuscript.

Competing interests None declared.

Patient consent Obtained.

Ethics approval The study was approved the ethics committee of Institut de Recerca de Hospital de Sant Pau: IIBSP-ATL-2017-91

Provenance and peer review Not commissioned; externally peer reviewed.

Data sharing statement All data analysed during this study are included in this published article.

Open access This is an open access article distributed in accordance with the Creative Commons Attribution Non Commercial (CC BY-NC 4.0) license, which permits others to distribute, remix, adapt, build upon this work non-commercially, and license their derivative works on different terms, provided the original work is properly cited, appropriate credit is given, any changes made indicated, and the use is non-commercial. See: <http://creativecommons.org/licenses/by-nc/4.0/>

REFERENCES

1. Claessen G, Claus P, Delcroix M, *et al.* Interaction between respiration and right versus left ventricular volumes at rest and during exercise: a real-time cardiac magnetic resonance study. *Am J Physiol Heart Circ Physiol* 2014;306:H816–24.
2. La Gerche A, Claessen G, Dymarkowski S, *et al.* Exercise-induced right ventricular dysfunction is associated with ventricular arrhythmias in endurance athletes. *Eur Heart J* 2015;36:1998–2010.
3. Carrió I, Serra-Grima R, Berná L, Li B, *et al.* Transient alterations in cardiac performance after a six-hour race. *Am J Cardiol* 1990;65:1471–4.
4. Shave R, Baggish A, George K, *et al.* Exercise-induced cardiac troponin elevation: evidence, mechanisms, and implications. *J Am Coll Cardiol* 2010;56:169–76.
5. Shave R, George K, Gaze D. The influence of exercise upon cardiac biomarkers: a practical guide for clinicians and scientists. *Curr Med Chem* 2007;14:1427–36.
6. Benito B, Gay-Jordi G, Serrano-Mollar A, *et al.* Cardiac arrhythmogenic remodeling in a rat model of long-term intensive exercise training. *Circulation* 2011;123:13–22.
7. Breuckmann F, Möhlenkamp S, Nassenstein K, *et al.* Myocardial late gadolinium enhancement: prevalence, pattern, and prognostic relevance in marathon runners. *Radiology* 2009;251:50–7.
8. Möhlenkamp S, Lehmann N, Breuckmann F, *et al.* Running: the risk of coronary events: prevalence and prognostic relevance of coronary atherosclerosis in marathon runners. *Eur Heart J* 2008;29:1903–10.
9. Taylor AJ, Salerno M, Dharmakumar R, *et al.* T1 Mapping: basic techniques and clinical applications. *JACC Cardiovasc Imaging* 2016;9:67–81.
10. Schelbert EB, Testa SM, Meier CG, *et al.* Myocardial extravascular extracellular volume fraction measurement by gadolinium cardiovascular magnetic resonance in humans: slow infusion versus bolus. *J Cardiovasc Magn Reson* 2011;13:16.
11. Balady GJ, Arena R, Sietsema K, *et al.* Clinician's Guide to cardiopulmonary exercise testing in adults: a scientific statement from the American Heart Association. *Circulation* 2010;122:191–225.
12. Pelliccia A, Culasso F, Di Paolo FM, *et al.* Physiologic left ventricular cavity dilatation in elite athletes. *Ann Intern Med* 1999;130:23–31.
13. Scharhag J, Schneider G, Urhausen A, *et al.* Athlete's heart: right and left ventricular mass and function in male endurance athletes and untrained individuals determined by magnetic resonance imaging. *J Am Coll Cardiol* 2002;40:1856–63.
14. Spirito P, Pelliccia A, Prochan MA, *et al.* Morphology of the "athlete's heart" assessed by echocardiography in 947 elite athletes representing 27 sports. *Am J Cardiol* 1994;74:802–6.

15. Wilson M, O'Hanlon R, Prasad S, *et al.* Diverse patterns of myocardial fibrosis in lifelong, veteran endurance athletes. *J Appl Physiol* 2011;110:1622–6.
16. La Gerche A, Burns AT, Mooney DJ, *et al.* Exercise-induced right ventricular dysfunction and structural remodelling in endurance athletes. *Eur Heart J* 2012;33:998–1006.
17. Cabinian AE, Kiel RJ, Smith F, *et al.* Modification of exercise-aggravated coxsackievirus B3 murine myocarditis by T lymphocyte suppression in an inbred model. *J Lab Clin Med*;190:454–62.
18. van de Schoor FR, Aengevaeren VL, Hopman MT, *et al.* Myocardial fibrosis in athletes. *Mayo Clin Proc* 2016;91:1617–31.
19. Bradlow WM, Assomull R, Kilner PJ, *et al.* Understanding late gadolinium enhancement in pulmonary hypertension. *Circ Cardiovasc Imaging* 2010;3:501–3.
20. McDiarmid AK, Swoboda PP, Erhayem B, *et al.* Athletic cardiac adaptation in males is a consequence of elevated myocyte mass. *Circ Cardiovasc Imaging* 2016;9:e003579.
21. Sado DM, Flett AS, Banyersad SM, *et al.* Cardiovascular magnetic resonance measurement of myocardial extracellular volume in health and disease. *Heart* 2012;98:1436–41.
22. Mordi I, Carrick D, Bezerra H, *et al.* T1 and T2 mapping for early diagnosis of dilated non-ischaemic cardiomyopathy in middle-aged patients and differentiation from normal physiological adaptation. *Eur Heart J Cardiovasc Imaging* 2016;17:797–803.