



Environmental TEM for Materials Research

Hansen, Thomas Willum

Publication date:
2019

Document Version
Peer reviewed version

[Link back to DTU Orbit](#)

Citation (APA):
Hansen, T. W. (2019). *Environmental TEM for Materials Research*. Abstract from EMAT Workshop on Transmission Electron Microscopy, Antwerp, Belgium.

General rights

Copyright and moral rights for the publications made accessible in the public portal are retained by the authors and/or other copyright owners and it is a condition of accessing publications that users recognise and abide by the legal requirements associated with these rights.

- Users may download and print one copy of any publication from the public portal for the purpose of private study or research.
- You may not further distribute the material or use it for any profit-making activity or commercial gain
- You may freely distribute the URL identifying the publication in the public portal

If you believe that this document breaches copyright please contact us providing details, and we will remove access to the work immediately and investigate your claim.

Environmental TEM for Materials Research

Thomas W. Hansen

DTU Nanolab, DK-2800 Kgs. Lyngby, Denmark

Over the last decades, electron microscopy has played a large role in materials research. The increasing use of particularly environmental transmission electron microscopy (ETEM) in materials science provides new possibilities for investigating nanoscale components at work. Careful experimentation provides input for the development of new materials for e.g. energy production and electronics. In order to design experiments with the highest chance of a successful outcome, a detailed understanding of both the interaction of electrons with gas molecules, the effect of gas on high-resolution imaging and the behavior in this environment is necessary. If data is to be interpreted quantitatively, interaction of the electrons with gas molecules must be taken into account. Whereas conventional TEM samples are usually thin (below 10-20 nm), the dilute gas fills the entire gap between the pole pieces and is thus not spatially localized. Imaging samples with a simple geometry, such as gold particles on a flat graphene substrate and analyzing the variations in contrast provides a means for understanding the issues involved with imaging in the presence of a gas.

In this work, capabilities, possibilities and challenges of using ETEM in materials research has been explored and highlighted with various examples (1-7).

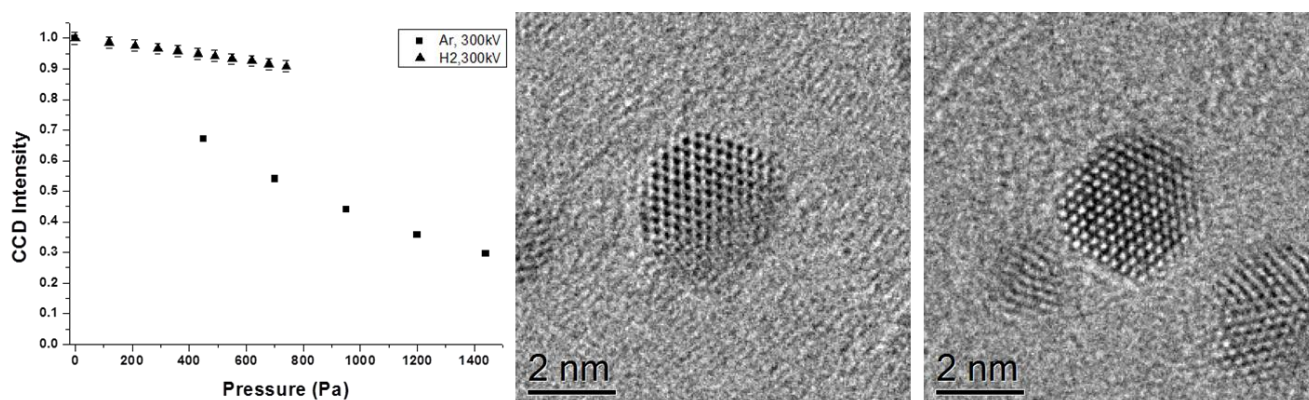


Figure 1: Left: Variation in total electron beam intensity after traversing the high-pressure region as a function of gas pressure; middle: graphene-supported Au nanoparticle imaged in vacuum; right: Au nanoparticle imaged in hydrogen at 200 Pa.

1. P. Schlexer *et al.*, Size-Dependence of the Melting Temperature of Individual Au Nanoparticles. *Part. Part. Syst. Charact.* **36**, 7 (2019).
2. W. T. Yuan *et al.*, Direct *In Situ* TEM Visualization and Insight into the Facet-Dependent Sintering Behaviors of Gold on TiO₂. *Angewandte Chemie-International Edition* **57**, 16827-16831 (2018).
3. J. Madsen *et al.*, A Deep Learning Approach to Identify Local Structures in Atomic-Resolution Transmission Electron Microscopy Images. *Advanced Theory and Simulations* **1**, 12 (2018).
4. J. Madsen, P. Liu, J. B. Wagner, T. W. Hansen, J. Schiøtz, Accuracy of surface strain measurements from transmission electron microscopy images of nanoparticles. *Adv. Struct. Chem. Imag.* **3**, 12 (2017).
5. J. Kling, T. W. Hansen, J. B. Wagner, Quantifying the growth of individual graphene layers by *in situ* environmental transmission electron microscopy. *Carbon* **99**, 261-266 (2016).
6. Q. Jeangros *et al.*, Energy-filtered environmental transmission electron microscopy for the assessment of solid-gas reactions at elevated temperature: NiO/YSZ-H-2 as a case study. *Ultramicroscopy* **169**, 11-21 (2016).
7. T. W. Hansen, J. B. Wagner, Eds., *Controlled Atmosphere Transmission Electron Microscopy*, (Springer, 2016), pp. 329.