

University of Nebraska - Lincoln

DigitalCommons@University of Nebraska - Lincoln

Faculty Publications from the Department of
Electrical and Computer Engineering

Electrical & Computer Engineering, Department of

2019

Neutrophil activation in systemic capillary leak syndrome (Clarkson disease)

Zhihui Xie
NIAID/NIH

Douglas B. Kuhns
NCI/NIH


Xuesong Gu
Beth Israel Deaconess Medical Center & Harvard Medical School

Hasan H. Otu
University of Nebraska-Lincoln, hotu2@unl.edu

Towia A. Libermann
Beth Israel Deaconess Medical Center & Harvard Medical School

See next page for additional authors

Follow this and additional works at: <https://digitalcommons.unl.edu/electricalengineeringfacpub>

 Part of the [Computer Engineering Commons](#), and the [Electrical and Computer Engineering Commons](#)

Xie, Zhihui; Kuhns, Douglas B.; Gu, Xuesong; Otu, Hasan H.; Libermann, Towia A.; Gallin, John I.; Parikh, Samir M.; and Druet, Kirk M., "Neutrophil activation in systemic capillary leak syndrome (Clarkson disease)" (2019). *Faculty Publications from the Department of Electrical and Computer Engineering*. 481.
<https://digitalcommons.unl.edu/electricalengineeringfacpub/481>


This Article is brought to you for free and open access by the Electrical & Computer Engineering, Department of at DigitalCommons@University of Nebraska - Lincoln. It has been accepted for inclusion in Faculty Publications from the Department of Electrical and Computer Engineering by an authorized administrator of DigitalCommons@University of Nebraska - Lincoln.

Authors

Zhihui Xie, Douglas B. Kuhns, Xuesong Gu, Hasan H. Otu, Towia A. Libermann, John I. Gallin, Samir M. Parikh, and Kirk M. Druey

ORIGINAL ARTICLE

Neutrophil activation in systemic capillary leak syndrome (Clarkson disease)

Zhihui Xie¹ | Douglas B. Kuhns² | Xuesong Gu³ | Hasan H. Otu⁴ |
Towia A. Libermann³ | John I. Gallin⁵ | Samir M. Parikh⁶ | Kirk M. Druey¹ 

¹Lung and Vascular Inflammation Section, Laboratory of Allergic Diseases, NIAID/NIH, Bethesda, Maryland

²Neutrophil Monitoring Laboratory, NCI/NIH, Frederick, Maryland

³Genomics, Proteomics, Bioinformatics and Systems Biology Center, Division of Interdisciplinary Medicine and Biotechnology, Beth Israel Deaconess Medical Center & Harvard Medical School, Boston, Massachusetts

⁴Department of Electrical and Computer Engineering, University of Nebraska, Lincoln, Nebraska

⁵Clinical Pathophysiology Section, NIAID/NIH, Bethesda, Maryland

⁶Department of Medicine, Division of Nephrology and Center for Vascular Biology Research, Beth Israel Deaconess Medical Center & Harvard Medical School, Boston, Massachusetts

Correspondence

Kirk M. Druey, 10 Center Drive Room 11N238A, Bethesda, MD 20892.
Email: kdruey@niaid.nih.gov

Funding information

NIAID/NIH

Abstract

Systemic capillary leak syndrome (SCLS; Clarkson disease) is a rare orphan disorder characterized by transient yet recurrent episodes of hypotension and peripheral oedema due to diffuse vascular leakage of fluids and proteins into soft tissues. Humoral mediators, cellular responses and genetic features accounting for the clinical phenotype of SCLS are virtually unknown. Here, we searched for factors altered in acute SCLS plasma relative to matched convalescent samples using multiplexed aptamer-based proteomic screening. Relative amounts of 612 proteins were changed greater than twofold and 81 proteins were changed at least threefold. Among the most enriched proteins in acute SCLS plasma were neutrophil granule components including bactericidal permeability inducing protein, myeloperoxidase and matrix metalloproteinase 8. Neutrophils isolated from blood of subjects with SCLS or healthy controls responded similarly to routine pro-inflammatory mediators. However, acute SCLS sera activated neutrophils relative to remission sera. Activated neutrophil supernatants increased permeability of endothelial cells from both controls and SCLS subjects equivalently. Our results suggest systemic neutrophil degranulation during SCLS acute flares, which may contribute to the clinical manifestations of acute vascular leak.

KEYWORDS

endothelial cells, neutrophils, proteomics, vascular leak

1 | INTRODUCTION

Systemic capillary leak syndrome (SCLS) is an extremely rare and potentially fatal disorder of unknown aetiology. SCLS is characterized by recurrent, spontaneous attacks of hypovolemic shock and anasarca due to sudden and massive leakage of intravascular fluids and proteins into peripheral tissues. Termed “Clarkson disease” in 1960 for its discoverer, SCLS is diagnosed based on a unique constellation of signs and symptoms including severe hypotension, elevated

haematocrit resulting from hemoconcentration and hypoalbuminemia due to leakage from the intravascular space.¹ Patients are frequently misdiagnosed initially with other conditions such as sepsis and treated with aggressive intravenous fluid resuscitation. Such therapy induces massive “third spacing” of fluids and solutes into peripheral tissues and development of compartment syndromes, which may require fasciotomies. There are no specific treatments for acute flares of SCLS beyond haemodynamic stabilization, nor is there curative therapy.

This is an open access article under the terms of the Creative Commons Attribution License, which permits use, distribution and reproduction in any medium, provided the original work is properly cited.

© 2019 The Authors. Journal of Cellular and Molecular Medicine published by John Wiley & Sons Ltd and Foundation for Cellular and Molecular Medicine.

Specific aetiological factors and pathways contributing the profound vascular barrier breakdown characteristic of acute SCLS flares are unknown. Although more than 80% of SCLS patients have a monoclonal gammopathy of unknown significance, there is no direct or indirect evidence that the monoclonal IgG has any role in disease pathogenesis.² In our studies of more than 65 patients with a confirmed diagnosis of SCLS, we found that several inflammatory cytokines (eg TNF α , CCL2, CXCL10) and mediators of vascular permeability (VEGF, Angpt-2) were significantly elevated in sera from patients during acute episodes compared to convalescent intervals.^{2,3} Treatment of normal vascular endothelial cells (ECs) with acute but not remission sera from these patients disrupted vascular integrity through mechanisms including internalization of VE-cadherin and actin stress fibre formation.

In order to broaden our search for mediators unique to SCLS and/or uncover a signature of humoral factors characteristic of acute attacks, we used the slow-off rate modified aptamer (SOMA)scan platform, an aptamer-based highly multiplexed proteomic assay capable of detecting more than 1300 protein analytes simultaneously across the whole dynamic range from only a small volume of plasma with high sensitivity and specificity.⁴ The SOMAscan approach uncovered more than 600 proteins, whose relative amounts were increased more than twofold in acute plasma relative to matched baseline plasma from the same patients. Most notably, several neutrophil granule proteins were profoundly elevated in acute SCLS plasma. Acute but not remission sera from SCLS patients activated neutrophils, and supernatants from activated neutrophils induced hyperpermeability of ECs. These results suggest that activated and/or degranulated neutrophils contribute to the pathogenesis of acute SCLS.

2 | MATERIALS AND METHODS

2.1 | Subjects

Patients were diagnosed with SCLS according to established criteria, specifically a history of one or more transient episodes of hypotension, elevated haematocrit and hypoalbuminemia.^{5,6} Patients were seen at the Clinical Center of the National Institutes of Health. Written informed consent was obtained from each patient and the study protocol (I-0184) conformed to the ethical guidelines of the 2008 Declaration of Helsinki, having been approved by the Institutional Review Board of the National Institute of Allergy and Infectious Diseases of NIH. EDTA plasma and sera were collected and stored from both remission and active disease intervals where available. Neutrophils were available only from asymptomatic patients. Anonymized age-, sex- and race-matched blood from healthy volunteers were obtained from the NIH Blood Bank for neutrophil isolation and used as controls.

2.2 | Cells and reagents

Human microvascular endothelial cells (HMVECs) and the culture medium EGM2 were purchased from Lonza. Blood outgrowth endothelial cells (BOECs) were generated and cultured as described previously.⁷ Lipopolysaccharide (LPS), cytochalasin B and N-formyl-Met-Leu-Phe

(fMLP) were obtained from Sigma-Aldrich. Human recombinant VEGFA-165 and TNF α were from PeproTech. Antibodies anti-human CD11b/BV786, CD16/APC and CD62L/PE were from Biolegend.

2.3 | SOMAscan and ELISA

Nine pairs of EDTA-plasma samples obtained at or near the onset of an acute SCLS crisis and from the same patient during a convalescent interval were analysed using the SOMAscan Assay Kit for human plasma 1.3k V3.2 (SomaLogic, Inc, cat.#900-00011) according to the standard protocol for EDTA plasma from the manufacturer's and as described previously.⁸ Five pooled human plasma controls and one buffer control were run on the same plate with the test samples for calibration and normalization. Median normalization and calibration of the data were performed according to the standard quality control protocols at SomaLogic. All samples passed the established quality control criteria. SOMAscan data were analysed using Partek Genomics Suite and statistical significance determined using two-way ANOVA. Proteins enriched in acute vs remission plasma at least threefold ($P < 0.01$) were used to generate the Heatmap. Functional enrichment was determined using Ingenuity Pathway Analysis software (Qiagen) using Fisher's Exact with FDR multiple test correction. ELISAs for elastase, myeloperoxidase (MPO), α -defensin, lactoferrin and MMP-9 were performed according to the manufacturer's instructions (Cayman Chemical for MPO; R&D Systems for the remainder).

2.4 | Neutrophil isolation

Neutrophils were isolated from whole blood using Hypaque Ficoll separation. Briefly, 1:1 PBS diluted blood was added onto the top of Ficoll (lymphocyte separation medium, MP Biomedicals), centrifuged at 800x g at room temperature for 20 minutes with the brake off. Neutrophils were retrieved from the bottom layer containing RBCs. After RBC lysis using ACK lysing buffer, cell pellets were washed twice in PBS. Neutrophil purity was routinely ~95% based on surface marker expression (CD16⁺, CD3⁻/CD19⁻) as determined by flow cytometry.

2.5 | Neutrophil activation/degranulation

For analysis of neutrophil activation, freshly isolated neutrophils were incubated with buffer or stimuli in culture medium at 37°C for the indicated time periods, followed by termination of the reaction by addition of ice-cold PBS. Cells were then stained with Live/Dead violet (ThermoFisher), washed once and stained with anti-human CD11b/BV785, CD16/APC and CD62L/PE. The samples were then analysed using an LSRII flow cytometer and the data processed using FlowJo software (BD BioSciences). MPO levels were determined by ELISA (Cayman Chemical). Briefly, purified neutrophils were incubated with fMLP (100 nmol/L) for 15 minutes in complete RPMI at 37°C in the presence of cytochalasin B (10 mol/L). Supernatants were collected and analysed by ELISA according to the manufacturer's instructions.

2.6 | Endothelial permeability measurements

An electric cell-substrate impedance sensing (ECIS) assay was used to assess endothelial barrier function. Electrical resistance was measured across endothelial monolayers at 4,000 Hz using the ECIS Z θ apparatus (Applied BioPhysics) as described previously.² Briefly, ECs were serum starved in endothelial basal medium (EBM2, Lonza) plus 0.2% BSA for 5 hours followed by addition of test reagents. Resistance was recorded over a period of 20 hours. Each condition was measured in duplicate in a single experiment and averaged. Absolute resistance values were normalized by subtracting the resistance at time zero (pre-treatment); the maximal change in resistance was calculated as percentage change over time zero.

2.7 | Statistical analysis

ELISA and flow cytometric data were analysed with GraphPad Prism 7 software package. Data were analysed by two-way ANOVA with multiple corrections testing, and non-parametric tests were used for flow data analysis (Mann-Whitney test for analysis of two groups; Kruskal-Wallis for analysis of multiple groups). $P < 0.05$ were considered significant.

3 | RESULTS

3.1 | Proteomic profile of acute SCLS plasma

Although the clinical symptoms of acute SCLS crises, including hemodynamic collapse and anasarca, are quite dramatic, patients are typically asymptomatic in between episodes. Although SCLS flares may occur in the absence of obvious triggers, recent survey studies suggest that infections (typically upper respiratory) precede SCLS attacks in 35%-50% of adult patients.^{1,9} These findings suggest that infection-related inflammatory mediators may induce vascular leakage in some patients. Indeed, in limited prior screening of acute SCLS sera, we found elevated levels of pro-inflammatory mediators including TNF α , CXCL10, CCL2 and IL-8.^{2,3}

To more fully probe the SCLS proteome, we performed SOMAscan profiling of 1305 proteins in nine matched plasma samples obtained by venipuncture during acute or convalescent intervals. The characteristics of these patients are described in Table 1. This assay identified 612 proteins, whose relative amounts were changed at least twofold in episodic plasma relative to baseline ($P < 0.05$) (full list in Table S1), and all but three of them were increased. Eighty-one proteins were increased at least threefold in episodic plasma ($P < 0.001$) (Figure 1A). With one exception, the protein profile of episodic and baseline samples clustered with one another. Consistent with previous studies of our entire SCLS cohort, several cytokines and vascular permeability mediators including CCL2, CXCL10, IL-12, IL-1 β , TNF α , adrenomedullin, Angpt-2 and VEGFA were significantly elevated in episodic plasma compared to remission plasma (Table S2).^{2,3,10} We also discovered enrichment of several proteins not previously associated with SCLS including surfactant protein D S(P-D), capping actin protein (CAPG), chymase, allograft inflammatory factor (AIF1), the TNF α superfamily member LIGHT and the stressorin IL-16 (Table 2). We analysed functional enrichment using Ingenuity pathway analysis. In the category of "Disease & Biological Function", "Inflammatory response" was the statistically most significant category ($P = 10^{-15}$) (Figure 1B); "Upstream Regulators" enriched in acute SCLS samples included several pro-inflammatory mediators such as LPS, IL-1 β and TNF α (all $P < 10^{-6}$) (Figure 1C). Finally, the top "Canonical Pathways" implicated in acute SCLS were IL-8 and glucocorticoid signaling ($P = 10^{-6}$) (Figure 1D).

3.2 | Neutrophil activation signature in SCLS disease flares

Among the proteins that were increased the most in acute SCLS plasma were neutrophil granule components bactericidal permeability increasing protein (BPI) (19.5-fold), matrix metalloproteinase 8 (MMP8, 7.9-fold) and MMP9 (4.5-fold) (Table 3). As noted above functionally enriched pathways in acute samples included signaling involving IL-8, a well-known neutrophil chemoattractant, and LPS, which also activates neutrophils.¹¹ Given these findings, we

TABLE 1 Characteristics of SCLS patients

Sample #	Sex	Age at diagnosis	#Episodes	Complications	Current treatment
1	M	63	>10	None	IVIG
2	F	40	4	CS, neuropathy	IVIG
3	M	48	>20	CS, neuropathy, thrombosis, GI infarct	IVIG
4	M	48	2	None	IVIG
5	M	46	>10	None	IVIG
6	M	43	11	CS	IVIG
7	M	68	>10	CS	IVIG
8	F	48	2 (+chronic)	Diarrhoea, vomiting, wasting	None (deceased)
9	F	37	2	Cardiac tamponade	IVIG

Abbreviation: CS, compartment syndrome; SCLS, systemic capillary leak syndrome

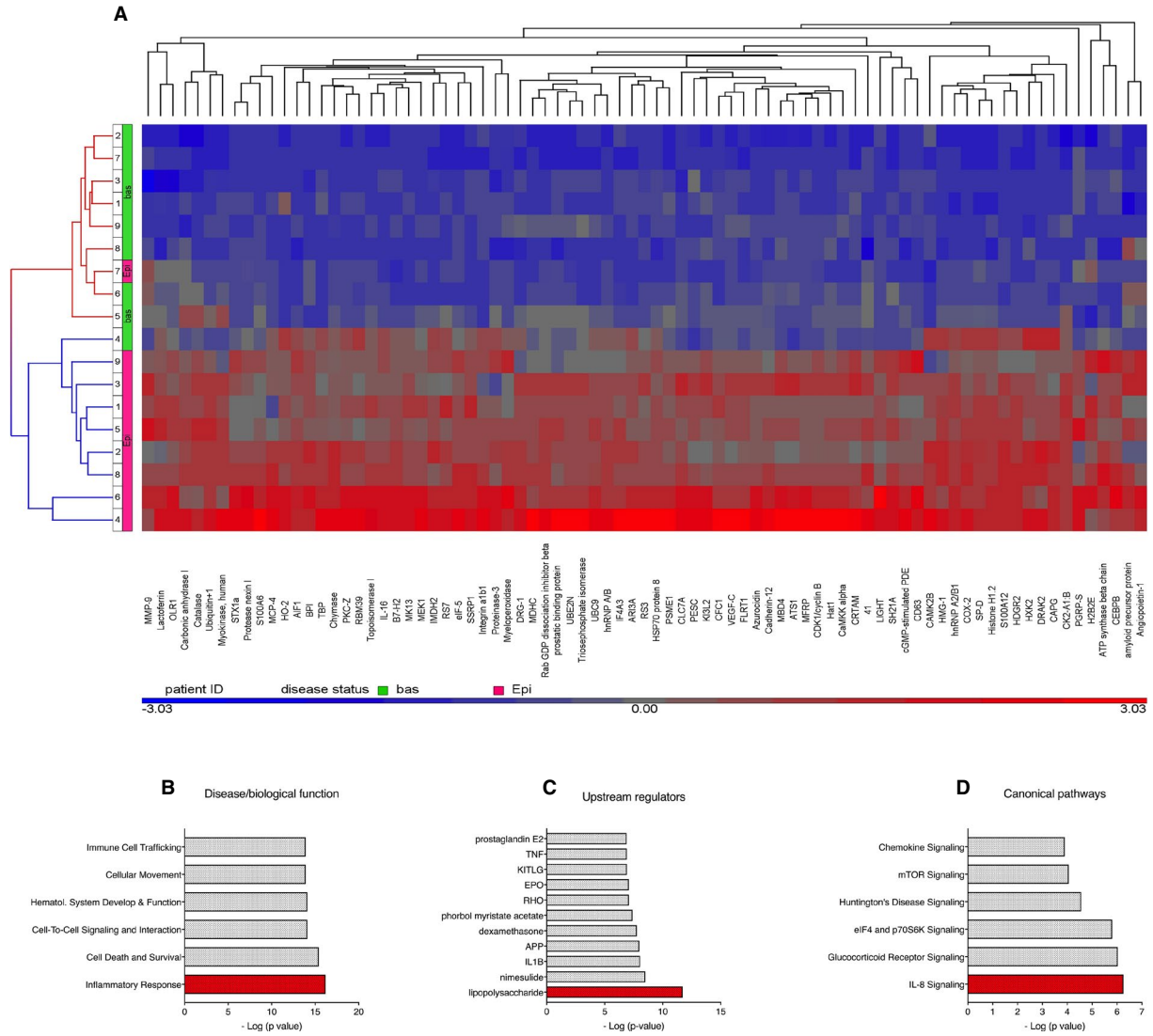


FIGURE 1 Proteomic profiling of systemic capillary leak syndrome (SCLS) plasma. Nine pairs of matched acute-remission plasma from SCLS patients were analysed using SOMAscan. (A), Heatmap representation of relative protein amounts. (B-D), Disease associations determined by Ingenuity pathway analysis and represented by *P*-values (Fisher's exact test)

Protein	<i>P</i> -value	Fold change (Epi/Bas)	Functional annotation (Ref)
Surfactant protein D (SP-D)	0.003019	13.4	Immunomodulatory (22)
Capping actin protein (CAPG)	0.001301	6.8	Gelsolin-related (actin binding protein); inflammation (23)
Chymase	0.000384	6.56	Mast cell-derived (24)
Allograft inflammatory factor 1	0.000172	4.36	Actin-binding protein; pro-inflammatory (25)
LIGHT	0.001306	3.99	TNF α superfamily (26)
IL-16	0.000697	3.05	Stressorin (27)

TABLE 2 Novel systemic capillary leak syndrome-associated proteins

hypothesized that neutrophil degranulation and activation may contribute to SCLS flares. To confirm the presence of systemic neutrophil degranulation in SCLS, we measured levels of granule components in the same plasma samples used for SOMAScan screening by quantitative ELISA. Contents of primary granules including elastase, MPO and α -defensin, secondary granules (lactoferrin) and tertiary granules (MMP-9) were significantly increased in episodic SCLS plasma compared to baseline in all patients (Figure 2A-E), confirming the SOMAScan-derived data. Although total neutrophil counts were not available from the date the acute plasma were drawn, absolute neutrophilia is not a consistent feature of acute SCLS attacks in our cohort as a whole although total white blood cell counts may be elevated due to infection and/or hemoconcentration. Indeed, protein extravasation and reduced blood volume may confound interpretation of plasma protein quantities during an SCLS flare. To evaluate the contribution of such factors, we normalized raw SOMAScan values for (MPO, molecular weight 150 kDa) by those for proteins of comparable size, whose relative values were unchanged in matched acute and remission samples. MPO corrected for either NrCAM (molecular weight [mw] 140 kDa) or MET (mw 145 kDa) values were similar to uncorrected values (Figure S1). Thus, we conclude that hemoconcentration alone is unlikely to account for the increased MPO in acute SCLS plasma relative to convalescence. Instead, our findings suggested that widespread neutrophil degranulation occurs in circulation during SCLS crises.

3.3 | Intrinsic neutrophil function in SCLS

We next determined whether neutrophils from SCLS patients are intrinsically hyper-responsive to inflammatory stimuli, which could account for the increased granule components in acute plasma. We first measured neutrophil oxidative burst using a dihydrorhodamine assay. In response to phorbol myristate acetate stimulation, neutrophils from SCLS subjects yielded an average stimulation index of 187.7 ± 2.97 , well within the normal range of the testing clinical laboratory ([115-291], $n = 3$), indicating that the neutrophil oxidative burst is intact in SCLS. We next measured degranulation by quantifying MPO secretion. Amounts of MPO released following

fMLP stimulation of neutrophils from SCLS subjects and healthy controls were indistinguishable from one another (Figure 3A). We also assessed neutrophil activation by quantifying surface marker expression using flow cytometry. Activated neutrophils upregulate CD11b while shedding other membrane-associated proteins including CD62L (L-selectin) and CD16. Baseline expression of numerous surface markers was comparable in untouched neutrophils from whole blood of SCLS patients and controls as assessed by flow cytometry, including granulocyte activation markers 31D8, CD63 and CD62L, β 2-integrins and Fc receptors (Figure S2). Likewise, stimulation of purified neutrophils with several proinflammatory mediators including fMLP, TNF α and LPS induced a comparable pattern of activation marker expression in neutrophils isolated from peripheral blood of healthy donors and SCLS subjects during disease-free intervals (Figure 3B-D). These results indicate that neutrophils from SCLS subjects retain the capacity to degranulate and release reactive oxygen species (ROS) in response to pro-inflammatory stimuli.

3.4 | Acute SCLS sera induce neutrophil activation

A subpopulation of highly activated neutrophils (CD62L^{dim}CD16^{bright}) is recruited to the circulation from bone marrow in response to acute systemic inflammation associated with sepsis and acute trauma, among others.^{12,13} Given the link between SCLS episodes and infection, and the presence of pro-inflammatory cytokines in acute SCLS sera, we hypothesized that SCLS sera and/or plasma activate neutrophils. To investigate this, we analysed surface marker expression on purified neutrophils from healthy donors incubated with various sera by flow cytometry, as the availability of plasma was limited. Treatment of neutrophils with acute SCLS sera significantly increased the activated (CD16^{bright}/CD62L^{dim}) subpopulation, with a concomitant decrease in the CD16^{bright}/CD62L^{bright} (quiescent) subset, compared to cells treated with matched remission sera. (Figure 4A-D). This result suggests that SCLS serum components constrained to acute disease flares activate neutrophils, which in turn could account for the increase in granule components in acute SCLS plasma relative to that from asymptomatic individuals.

TABLE 3 Neutrophil granule-associated proteins in acute systemic capillary leak syndrome sera

Protein	p-value	Fold change (Epi/Bas)	Granules
Bactericidal permeability increasing protein (BPI)	1.65E-05	19.52	Azurophilic/primary
Myeloperoxidase (MPO)	0.0009012	3.07	Azurophilic/primary
Cathepsin G	0.0011997	2.80	Azurophilic/primary
Matrix Metalloproteinase 8 (MMP8)	0.0190632	7.93	Specific/secondary
Gelatinase (MMP9)	0.0004257	4.54	Tertiary
MMP1	0.0023533	2.62	Tertiary
MMP13	0.0057115	1.66	Tertiary

Significantly enriched neutrophil-associated proteins identified by SOMAScan are listed in the table along with their granule locations.

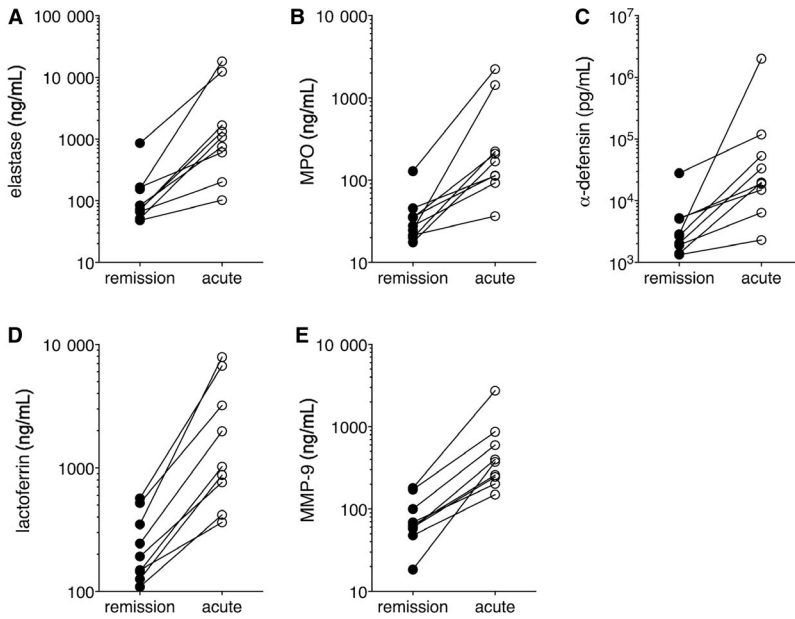


FIGURE 2 Levels of neutrophil granule constituents in systemic capillary leak syndrome plasma. (A-E), Levels of the indicated neutrophil granule components were determined in matched acute-remission plasma samples used in SOMAscan screening by ELISA

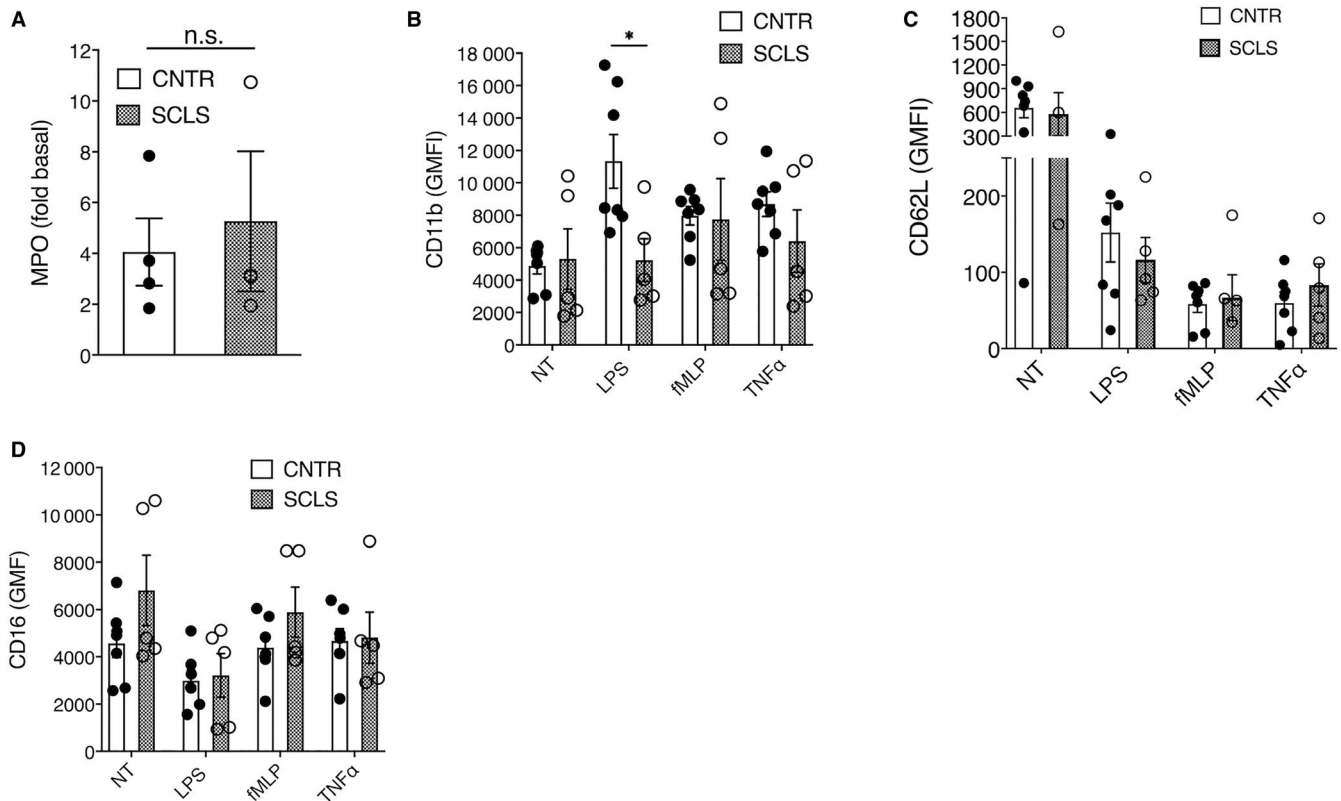


FIGURE 3 Responses of neutrophils from systemic capillary leak syndrome (SCLS) subjects to pro-inflammatory mediators. Neutrophils were isolated from whole blood and incubated left untreated (no treatment, NT) or treated with fMLP for 15 minutes in the presence of cytochalasin B. (A), myeloperoxidase (MPO) released was measured by ELISA, and the data are expressed as the fold change in MPO compared to unstimulated cells (mean \pm SEM). (B-D), Purified neutrophils were not treated (NT) or exposed to Lipopolysaccharide (LPS), fMLP or TNF α for one hour. Cells were immunostained with antibodies against the indicated markers and surface expression analysed by flow cytometry. Data are expressed as geometric mean fluorescence intensity (GMFI) (mean \pm SEM); * P < 0.05, Mann-Whitney u test

3.5 | Neutrophil degranulation and vascular barrier integrity

We tested the effects of neutrophil granule contents on endothelial barrier function. First, we stimulated neutrophils isolated from

healthy donors with medium alone or fMLP. We confirmed neutrophil degranulation by MPO assay (Figure S3A). We then treated ECs with supernatants from the activated neutrophils and measured transendothelial electrical resistance (TER) across monolayers in real time. fMLP-stimulated neutrophil supernatants from two separate donors

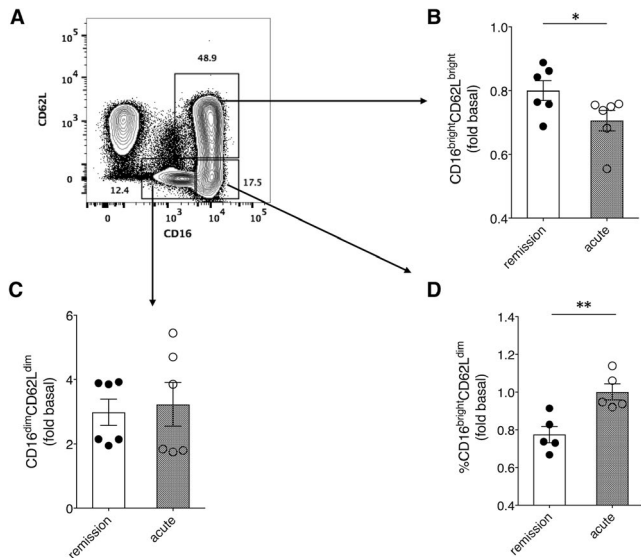


FIGURE 4 Acute systemic capillary leak syndrome (SCLS) sera elicit neutrophil activation. (A–C), Purified neutrophils from healthy donors were left untreated or incubated with acute or remission SCLS sera for one hour followed by immunostaining with antibodies against the indicated surface markers and analysis by flow cytometry. Results are expressed as the fold change in the percentage of cells positive for the indicated markers relative to unstimulated cells; * $P = 0.04$, ** $P = 0.002$, Mann-Whitney u test

led to decreased TER (ie increased permeability) of HMVECs, while the resistance of cells exposed to medium alone remained relatively constant over a period of 10 hours (Figure S3B). We next determined the effects of degranulated neutrophil supernatants on ECs isolated and expanded from peripheral blood of SCLS patients or healthy controls BOECs.⁷ The activated neutrophil supernatants reduced TER in a pattern similar to commercially supplied HMVECs (Figure 5A,B). However, the maximal decrease in resistance in BOECs from SCLS subjects and controls was equivalent at both early (30 minutes) and later (15 hours) time points. Thus, although neutrophil granule constituents exert permeability-inducing effects on ECs, our data do not suggest hypersensitivity of SCLS ECs to this stimulus.

4 | DISCUSSION

From our proteomic screening study of SCLS plasma, we discovered that neutrophils are activated during SCLS disease flares. Neutrophil granule contents (primary, secondary and tertiary granules), including MPO, BPI, Cathepsin G, gelatinase and collagenases, were increased in acute plasma relative to baseline, indicating systemic neutrophil degranulation. Hemoconcentration and protein extravasation are confounding factors for the interpretation of changes in levels of plasma proteins during an SCLS flare. The degree of hemoconcentration in a typical SCLS episode is 50%–80%, as indicated by the mean change in hematocrit. In comparison, levels of (BPI, mw 25 kDa), the top-ranked protein from the SOMAScan screen, rose

nearly 2000% in acute plasma relative to matched convalescent plasma. As early as 1977, tracking studies of proteins of varying molecular weights in SCLS sera during flares determined that although albumin (mw 62 kDa) levels decreased by 30%–50% during an episode, C1 (mw 200 kDa) decreased only 10% and IgM (mw 900 kDa) levels rose in direct proportion to the increase in hematocrit.¹⁴ Thus, proteins up to 900 kDa may extravasate during episodes of SCLS. SOMAScan revealed that MPO (mw 150 kDa) levels increased more than threefold in acute sera relative to baseline, whereas several unrelated proteins of similar size were not elevated in the same samples (eg CHRDL [150 kDa], 1.01-fold change in basal vs episodic sera; NrCAM [140 kDa], –1.00-fold; MET [145 kDa], 1.003-fold). In addition, SOMAScan underestimated the increases in MPO, as quantitative ELISA revealed that absolute MPO levels actually increased nearly 10-fold in episodic vs remission plasma (Figure 2B). Thus, we conclude that a) hemoconcentration alone could not account for elevations in circulating concentration of plasma proteins; b) changes in plasma protein levels are not solely based extravasation due to size.

The impetus for neutrophil activation is still unknown. Because many patients have infections preceding flares and most have elevated serum levels of pro-inflammatory cytokines at the onset of an attack, the factors inciting neutrophil activation may not be unique to SCLS. Neutrophil degranulation occurs in other diseases associated with systemic inflammation including sepsis. Notably, however, mean plasma levels of azurophilic granule components such as MPO in acute SCLS were nearly ninefold higher than those in septic plasma (514 vs 60 ng/mL).¹⁵ Similarly, although elevated levels of tertiary granule constituents including MMP9 are observed in sepsis and other systemic diseases with prominent vascular abnormalities such as Kawasaki syndrome, levels of MMP9 are twofold to fivefold higher in SCLS.¹⁶

Our results thus far suggest that neutrophils from SCLS patients are not predisposed to degranulate or become activated in response to routine inflammatory mediators. This was somewhat unexpected since we discovered distinct transcriptomes and responses of SCLS ECs and peripheral blood mononuclear cells compared to healthy controls.^{7,10} For example, monocytes and ECs from SCLS patients produced more pro-inflammatory mediators—including adrenomedullin (ADM) and CXCL10—in response to treatment with SCLS-associated cytokines (IFN γ) compared to controls.^{3,10} It is possible that SCLS neutrophils may hyper-respond to a constellation of SCLS-associated factors that cannot be fully recapitulated in vitro; limited sample availability precludes us from formally testing this hypothesis at the present time through studies of matched patient neutrophils and acute sera.

Clinical manifestations of acute SCLS including hypovolemic shock and anasarca most likely result from disruption of the endothelial barrier of the soft tissue microvasculature.² The current study suggests that neutrophil-derived mediators contribute to endothelial dysfunction in SCLS. MPO is a phagocytic peroxidase enzyme whose major product is hypochlorous acid, a potent microbicidal agent, generated from hydrogen peroxide (H₂O₂), which plays a key role in host responses.¹⁷ MPO and ROS including H₂O₂ have been shown to increase permeability of HMVEC monolayers in vitro.¹⁸ In addition, MPO has the capacity to sequester nitric oxide (NO),

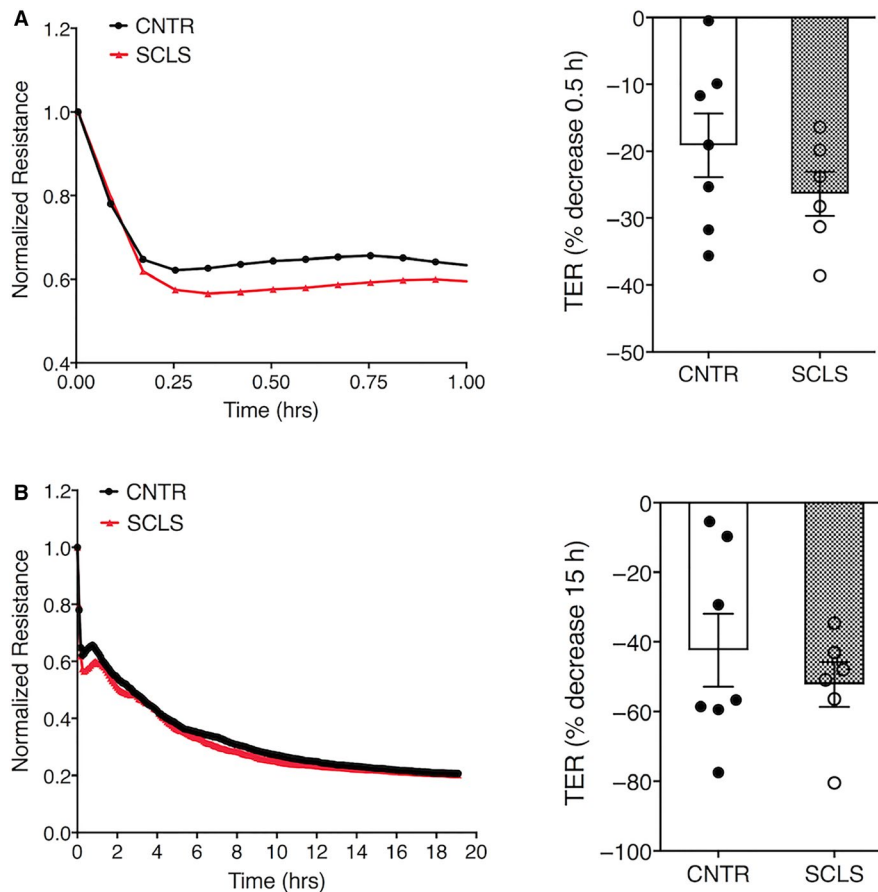


FIGURE 5 Activated neutrophil supernatants enhance endothelial permeability. (A-B), Transendothelial resistance (TER) across Blood outgrowth endothelial cells from healthy subjects or systemic capillary leak syndrome (SCLS) patients was measured after application of fMLP-stimulated neutrophil supernatants for 30 minutes (A) or 15 hours (B). TER over time in a representative experiment is shown on the left; bar graphs on right show the percentage decrease in baseline resistance at the indicated time points (mean \pm SEM)

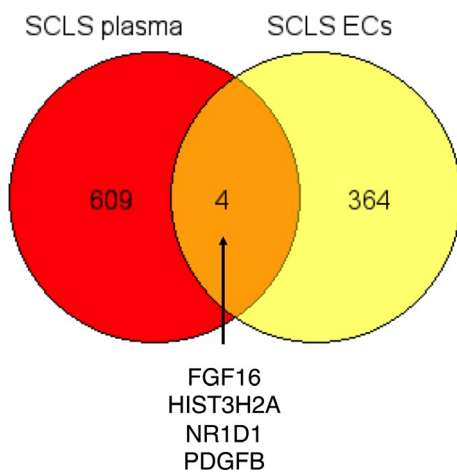


FIGURE 6 SOMAscan and other discovery-driven approaches to unraveling systemic capillary leak syndrome (SCLS) disease mechanisms. Analysis of shared genes encoding proteins increased greater than twofold in acute vs remission SCLS plasma and transcripts significantly enriched $>\log_2$ -fold in SCLS Blood-outgrowth endothelial cells vs controls using GeneVenn. Shared genes listed at bottom

resulting in decreased bioavailability. NO promotes relaxation of vascular smooth muscle and endothelial contraction and has been implicated as a therapeutic target for SCLS-associated hypotension.¹⁹ Rodent studies show that MPO localizes at the vascular endothelium and extracellular matrix under inflammatory stress and affects vascular smooth muscle and endothelial functions.²⁰ ROS may also induce EC apoptosis; however, we did not observe apoptosis of HMVECs incubated with acute or convalescent SCLS sera.²

Another key finding is the increased activation of neutrophils induced by acute but not basal sera, as indicated by the increased percentage of the cells shedding CD62L. A CD16^{bright}/CD62L^{dim} neutrophil subset appears to be quite distinct from other neutrophil subpopulations in vivo; published work has suggested that such cells may be recruited from bone marrow to circulation in response to acute inflammation.¹³ This subset is less adherent to ECs and may play an immunosuppressive function as it preferentially migrates to splenic white pulp and inhibits T cell proliferation.^{12,21} Whether this neutrophil subpopulation has a distinct function in SCLS or simply reflects de novo activation requires further study.

In summary, through multiplexed proteomic screening of plasma, we have discerned a panoply of proteins enriched in plasma during

SCLS flares that suggests widespread neutrophil activation/degranulation. Our results demonstrate the utility of SOMAscan as a discovery tool for disease mechanisms. A comparison of genes encoding proteins elevated in acute SCLS plasma with transcripts overexpressed SCLS ECs compared to controls (unpublished RNA-Seq data) revealed a possible cellular source for several SCLS-enriched proteins (Figure 6). As but one example, platelet-derived growth factor B, which is secreted by ECs, stimulates proliferation and activation of pericytes, which are smooth muscle-like cells surrounding microvessels. Pericyte coverage is required for maintenance of microvascular endothelial barrier function in acute inflammation.²² We believe that these and other discovery-driven approaches will eventually lead to advances in classification of SCLS and development of biomarkers for treatment efficacy.

ACKNOWLEDGEMENTS

This research was supported in part by the Intramural Research Program, NIAID/NIH.

CONFLICT OF INTERESTS

The authors declare no conflicts of interest.

AUTHORSHIP CONTRIBUTIONS

XZ, TAL, DBK, XG, HHO performed experiments and analysed data, and edited the paper. XZ, JIG, SMP and KMD designed and oversaw the project, and wrote and edited the paper.

DATA AVAILABILITY STATEMENT

The data that support the findings of this study are available from the corresponding author upon reasonable request.

ORCID

Kirk M. Druey  <https://orcid.org/0000-0002-5834-6501>

REFERENCES

1. Druey KM, Parikh SM. Idiopathic systemic capillary leak syndrome (Clarkson disease). *J Allergy Clin Immunol*. 2017;140(3):663-670.
2. Xie Z, Ghosh CC, Patel R, et al. Vascular endothelial hyperpermeability induces the clinical symptoms of Clarkson disease (the systemic capillary leak syndrome). *Blood*. 2012;119(18):4321-4332.
3. Xie Z, Chan E, Yin Y, et al. Inflammatory Markers of the Systemic Capillary Leak Syndrome (Clarkson Disease). *J Clin Cell Immunol*. 2014;5:1000213.
4. Gold L, Ayers D, Bertino J, et al. Aptamer-based multiplexed proteomic technology for biomarker discovery. *PLoS ONE*. 2010;5(12):e15004.
5. Druey KM, Greipp PR. Narrative review: the systemic capillary leak syndrome. *Ann Intern Med*. 2010;153(2):90-98.
6. Gousseff M, Arnaud L, Lambert M, et al. The systemic capillary leak syndrome: a case series of 28 patients from a European registry. *Ann Intern Med*. 2011;154(7):464-471.
7. Sek AC, Xie Z, Terai K, et al. Endothelial expression of endothelin receptor a in the systemic capillary leak syndrome. *PLoS ONE*. 2015;10(7):e0133266.
8. Kollar B, Shubin A, Borges TJ, et al. Increased levels of circulating MMP3 correlate with severe rejection in face transplantation. *Sci Rep*. 2018;8(1):14915.
9. Eo TS, Chun KJ, Hong SJ, et al. Clinical presentation, management, and prognostic factors of idiopathic systemic capillary leak syndrome: a systematic review. *J Allergy Clin Immunol Pract*. 2018;6(2):609-618.
10. Xie Z, Chen W-S, Yin Y, et al. Adrenomedullin surges are linked to acute episodes of the systemic capillary leak syndrome (Clarkson disease). *J Leukoc Biol*. 2018;103(4):749-759.
11. Borregaard N. Neutrophils, from marrow to microbes. *Immunity*. 2010;33(5):657-670.
12. Pillay J, Kamp VM, van Hoffen E, et al. A subset of neutrophils in human systemic inflammation inhibits T cell responses through Mac-1. *J Clin Invest*. 2012;122(1):327-336.
13. Tak T, Wijten P, Heeres M, et al. Human CD62L(dim) neutrophils identified as a separate subset by proteome profiling and in vivo pulse-chase labeling. *Blood*. 2017;129(26):3476-3485.
14. Atkinson JP, Waldmann TA, Stein SF, et al. Systemic capillary leak syndrome and monoclonal IgG gammopathy; studies in a sixth patient and a review of the literature. *Medicine (Baltimore)*. 1977;56(3):225-239.
15. Schrijver IT, Kemperman H, Roest M, Kesecioglu J, de Lange DW. Myeloperoxidase can differentiate between sepsis and non-infectious SIRS and predicts mortality in intensive care patients with SIRS. *Intensive Care Med Exp*. 2017;5(1):43.
16. Takeshita S, Tokutomi T, Kawase H, et al. Elevated serum levels of matrix metalloproteinase-9 (MMP-9) in Kawasaki disease. *Clin Exp Immunol*. 2001;125(2):340-344.
17. Lau D, Baldus S. Myeloperoxidase and its contributory role in inflammatory vascular disease. *Pharmacol Ther*. 2006;111(1):16-26.
18. Patterson EK, Fraser DD, Capretta A, Potter RF, Cepinskas G. Carbon monoxide-releasing molecule 3 inhibits myeloperoxidase (MPO) and protects against MPO-induced vascular endothelial cell activation/dysfunction. *Free Radic Biol Med*. 2014;70:167-173.
19. Umbrello M, Gardinali M, Ottolina D, Zanforlin G, Iapichino G. Systemic capillary leak syndrome: is methylene blue the silver bullet? *Case Rep Crit Care*. 2014;2014:141670.
20. Eiserich JP, Baldus S, Brennan ML, et al. Myeloperoxidase, a leukocyte-derived vascular NO oxidase. *Science*. 2002;296(5577):2391-2394.
21. Kamp VM, Pillay J, Lammers JW, Pickkers P, Ulfman LH, Koenderman L. Human suppressive neutrophils CD16bright/CD62Ldim exhibit decreased adhesion. *J Leukoc Biol*. 2012;92(5):1011-1020.
22. Fuxe J, Tabruyn S, Colton K, et al. Pericyte requirement for anti-leak action of angiotensin-1 and vascular remodeling in sustained inflammation. *Am J Pathol*. 2011;178(6):2897-2909.

SUPPORTING INFORMATION

Additional supporting information may be found online in the Supporting Information section at the end of the article.

How to cite this article: Xie Z, Kuhns DB, Gu X, et al. Neutrophil activation in systemic capillary leak syndrome (Clarkson disease). *J Cell Mol Med*. 2019;23:5119-5127. <https://doi.org/10.1111/jcmm.14381>