

Provided by the author(s) and NUI Galway in accordance with publisher policies. Please cite the published version when available.

Title	Poynting effect of brain matter in torsion
Author(s)	Balbi, Valentina; Trotta, Antonia; Destrade, Michel; Annaidh, Aisling Ni
Publication Date	2019-06-13
Publication Information	Balbi, Valentina, Trotta, Antonia, Destrade, Michel, & Ní Annaidh, Aisling. (2019). Poynting effect of brain matter in torsion. <i>Soft Matter</i> , 15(25), 5147-5153. doi: 10.1039/C9SM00131J
Publisher	Royal Society of Chemistry
Link to publisher's version	https://dx.doi.org/10.1039/c9sm00131j
Item record	http://hdl.handle.net/10379/15279
DOI	http://dx.doi.org/10.1039/c9sm00131j

Downloaded 2020-10-17T05:19:08Z

Some rights reserved. For more information, please see the item record link above.





Poynting effect of brain matter in torsion†

Cite this: DOI: 10.1039/c9sm00131j

Valentina Balbi,^a Antonia Trotta,^b Michel Destrade^{ab} and Aisling Ni Annaidh^b

Received 18th January 2019,
Accepted 30th April 2019

DOI: 10.1039/c9sm00131j

rsc.li/soft-matter-journal

We investigate experimentally and model theoretically the mechanical behaviour of brain matter in torsion. Using a strain-controlled rheometer, we perform torsion tests on fresh porcine brain samples. We quantify the torque and the normal force required to twist a cylindrical sample at constant twist rate. Data fitting gives a mean value for the shear modulus of $\mu = 900 \pm 312$ Pa and for the second Mooney–Rivlin parameter of $c_2 = 297 \pm 189$ Pa, indicative of extreme softness. Our results show that brain always displays a positive Poynting effect; in other words, it expands in the direction perpendicular to the plane of twisting. We validate the experiments with finite element simulations and show that when a human head experiences a twisting motion in the horizontal plane, the brain can experience large forces in the axial direction.

1 Introduction

The brain is an extremely soft and fragile tissue, making it hard to test experimentally using the standard protocols in place for soft matter such as elastomers or rubbers.¹ The inflation test is not appropriate for obvious reasons. The uni-axial tensile test requires a dogbone geometry and clamping, which cannot be realised in practice for brain tissue; instead, the end faces of a cylinder have to be glued to the tension plates, which leads rapidly to an inhomogeneous deformation.^{2,3} The compression test can achieve homogeneous deformation with lubrication of the plates, but only up to about 10% strain, after which it starts to bulge out.⁴ By contrast, the simple shear test works well^{5,6} up to a 45° tilting angle leading to a maximal stretch of more than 60%. Similarly, as we show in this paper, the torsion test can be implemented readily for brain matter.

Simple shear and torsion tests are particularly useful to study the Poynting effect, a typical nonlinear phenomenon displayed by soft solids. When sheared or twisted, those materials tend to elongate (positive Poynting effect⁷) or contract (negative Poynting effect⁸) in the direction perpendicular to the shearing or twisting plane. This phenomenon has been observed for brain matter in simple shear tests.⁶ However, a practical limitation of simple shear tests is that to date there are no shearing devices able to measure and quantify the normal force, which limits the determination of material parameters.

An alternative test is torsion. It can be performed by glueing a cylindrical sample between two parallel plates and then applying a twist to the sample by rotating one plate with respect to the other. In the past, torsion tests on brain matter have been performed using a rheometer, at constant strain rates (from 0.05 to 1 s⁻¹),⁹ to measure the elastic properties of the tissue and to investigate its viscoelastic behaviour dynamically over a range of frequencies (20–200 Hz).¹⁰ A comprehensive summary of the results of mechanical tests on brain tissue can be found in two recent reviews.^{11,12} However, in these studies, only the torques were recorded. Moreover, torsion was modelled as simple shear, an equivalence that, as we show in the ESI,† is only valid locally.

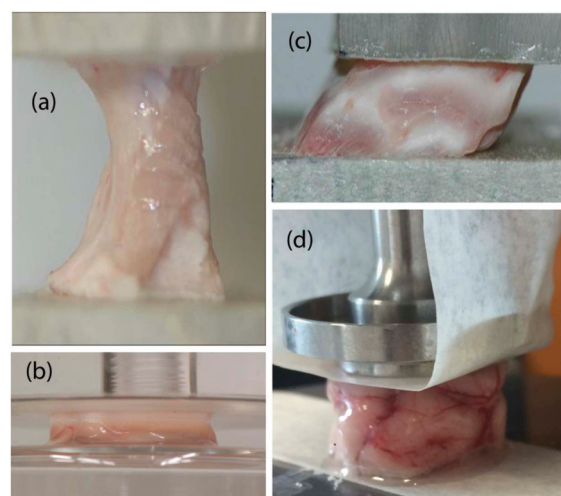


Fig. 1 Standard testing protocols for soft solids applied to brain matter (porcine): (a) tensile test with glued ends and (b) compression test with lubricated faces: notice the inhomogeneity of the resulting deformations; (c) simple shear and (d) torsion: here, the samples behave as required.

^a School of Mathematics, Statistics and Applied Mathematics, NUI Galway, University Road, Galway, Ireland. E-mail: vbalbi@nuigalway.ie,

v.balviv@gmail.com

^b School of Mechanical & Materials Engineering, University College Dublin, Belfield, Dublin 4, Ireland

† Electronic supplementary information (ESI) available. See DOI: 10.1039/c9sm00131j



To our knowledge, the role played by the normal forces arising during torsion of brain matter has not been investigated yet.

In this work, we perform torsion tests on cylindrical porcine brain samples and measure the torque and the axial force required to twist the samples at a constant twist rate of $300 \text{ rad m}^{-1} \text{ s}^{-1}$. In Section 2, we describe the experimental protocols for preparing and testing the brain specimens. In Section 3, we present the collected and filtered data and describe the filtering strategy adopted to keep meaningful experimental measurements. We then accurately model the data with the Mooney–Rivlin model in Section 4 and obtain material parameters of brain matter that compare well with those found from other tests. To further validate the analytical modelling, we implement finite element (FE) simulations in Abaqus to mimic the experiments and finally, we use the estimated mechanical parameters to simulate a rotational head impact.

Our main finding is that brain matter exhibits the normal Poynting effect, *i.e.* it tends to expand along its axis when twisted.¹³ As noted by Rivlin,⁷ the Poynting effect is a nonlinear elastic effect par excellence and cannot be explained by the linearised theory. It was present in all the cylindrical samples we tested, and when we simulated the rapid twisting of a head in a finite element model, we found that large vertical stresses developed in the whole brain also.

2 Materials and methods

In this section, we give a brief description of the procedure for preparation and testing of the brain samples.

2.1 Tissue preparation

Two fresh porcine heads from freshly killed 22-week-old mixed sex pigs were obtained from a BRC-regulated (British Retail Consortium) food processing facility (Dawn Pork & Bacon, Waterford, Ireland). The animals did not die for this study; therefore, we did not need to require ethical approval from the Ethics Committee at University College Dublin.

The scalp was removed using a scalpel and the cranial bone was removed using an oscillating saw. Following removal of the skull, the meninges tissue was removed using surgical scissors. Finally, following resection of connective and vascular tissue and separation from the spinal cord, the undamaged brain was placed in phosphate buffered saline (PBS) solution.

The brains had an average (maximum) length, width and height of $7.5 \pm 0.3 \text{ cm}$, $6.4 \pm 0.3 \text{ cm}$ and $3 \pm 0.3 \text{ cm}$, respectively. From each brain, three slices of approximately 15 mm were obtained from the frontal, parietal and occipital portions, respectively. Then, a stainless steel cylindrical punch of 20 mm diameter was used to remove up to four cylinders from each slice (depending on the available surface of the slice) as shown in Fig. 2. Each long cylindrical sample was then cut to samples of approximately 10 mm using a scalpel and template. The exact height of the specimen was measured again prior to testing. A total of 9 mixed grey and white matter samples were then used for testing and modelling in this study. After extraction, the cylindrical samples were placed in PBS solution in

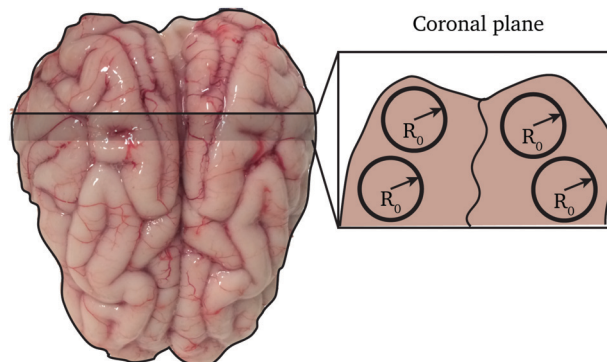


Fig. 2 Sketch of the cutting map of a fresh porcine brain (top view). The cylindrical samples were obtained by cutting a slice of brain excised from the coronal plane into cylinders of radius $R_0 = 10 \text{ mm}$.

multi-well plates of 20 mm diameter and placed in a fridge for less than 2 hours while all samples were prepared.

2.2 Mechanical testing

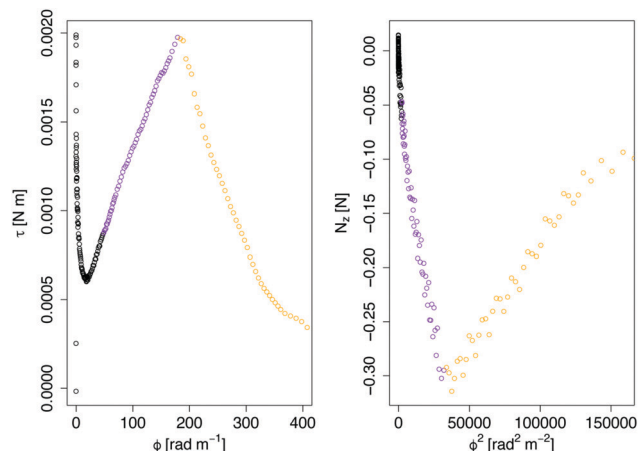
A Discovery HR2 Hybrid rheometer with parallel plates was used for all mechanical testing. This device has a torque resolution of 0.1 nN m and a normal force resolution of 0.5 mN. To enable easy removal and to protect the platens, masking tape was applied to both faces of the parallel plates,^{3,4,6} and then the samples were glued rigidly to the tape using a high viscosity glue. The tape thickness ($\leq 1 \text{ mm}$) is negligible compared to the height of the samples. All testing was performed at room temperature ($23^\circ\text{--}25^\circ$) and the samples were kept hydrated until the beginning of the test. A cylindrical Peltier plate with radius $r_p = 10 \text{ mm}$ was used. The rheometer was controlled through the TRIOS Software (v4.3.1). Each of the 9 samples was tested once. The test consisted of a single stress growth step: a ramp test, where the upper plate is rotated at a constant twist rate for a duration of 10 s. The distance H between the top plate and the bottom of the instrument was adjusted until the normal force was zero at the beginning of each test. The twist rate (angular velocity of the upper plate per unit height) was $\dot{\phi} = 300 \text{ rad m}^{-1} \text{ s}^{-1}$. The testing protocol was validated on silicon gel samples (see the ESI,[†] for details).

3 Experimental results

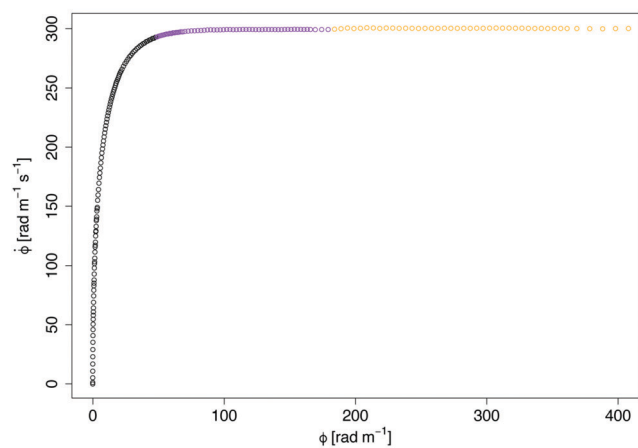
In this section, we describe the filtering procedure required to get a clean set of data, ready for model fitting and parameter estimation.

Fig. 3 shows a set of typical output data from the rheometer. In Fig. 3(a), the torque τ and the normal force N_z are plotted against the twist ϕ and the twist squared, respectively. The output twist ϕ in the plots is the angle of rotation α per unit length $\phi = \alpha/H$. From the data shown in Fig. 3(a), we identify three regions, for both the torque and the force data: (i) a noisy region (in black), at the very beginning of the test; (ii) a linear region (in purple) bounded by a maximum (minimum), and (iii) a decaying region (in orange) towards the end of the experiment.

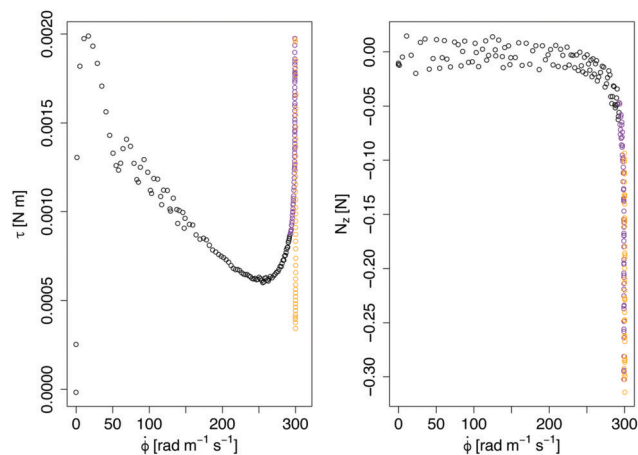




(a) Representative torque and normal force output



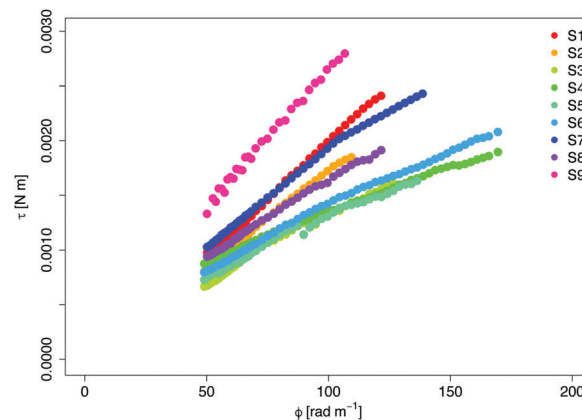
(b) Strain rate monitoring



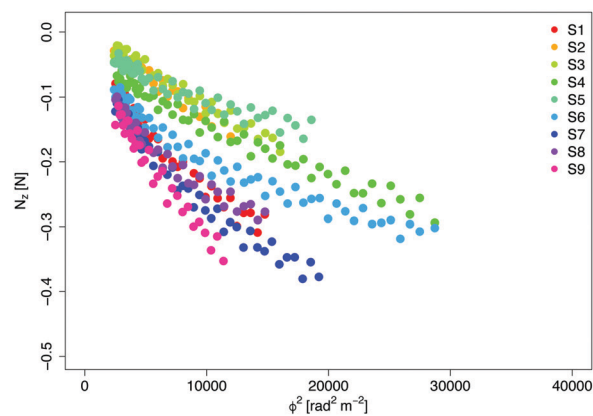
(c) Data output vs strain rate

Fig. 3 Original collected data: (a, left) torque against twist squared; (a, right) normal force against twist squared; (b) twist rate against twist; (c, left) torque and (c, right) normal force against twist rate. Black data: ramping towards the constant twist rate, see (b); purple: proper data of torsion; orange: data after breaking point, see (a).

The initial noisy region is due to the delay time of the instrument in reaching a constant twist rate. The plot in Fig. 3(b) shows the twist rate against the twist and clearly highlights the



(a) Torque



(b) Normal force

Fig. 4 Results of the torsion tests performed at a twist rate $\dot{\phi} = 300 \text{ rad m}^{-1} \text{ s}^{-1}$ on nine cylindrical samples of brain tissue excised from the coronal plane. (a) Torque τ vs. twist ϕ and (b) normal force N_z vs. twist squared ϕ^2 , measured for cylindrical samples with initial radius $R_0 = 10 \text{ mm}$.

initial region where the upper plate is accelerating to reach the constant twist rate $\dot{\phi} = 300 \text{ rad m}^{-1} \text{ s}^{-1}$. The plots in Fig. 3(c) further show that some data were actually generated at twist rates lower than $300 \text{ rad m}^{-1} \text{ s}^{-1}$. Only the data generated at $300 \text{ rad m}^{-1} \text{ s}^{-1}$ were thus considered in the following analysis.

The other filtering criterion is the breaking point of the sample, which is identified clearly by a steep drop and rise in the plots of Fig. 3(a), indicating that an irreversible change in the mechanical response of the tissue occurred. Therefore, all data points after the breaking point were discarded.

The remaining “good” data obtained from nine samples S_1, \dots, S_9 are shown in Fig. 4. Note that the rheometer reported positive values for the normal force, showing that the samples tend to expand axially during the twist (positive Poynting effect). Here, we changed the sign of the data to be consistent with the modelling approach presented in the next section.

4 Modelling

To fit the experimental data and get a quantitative estimation of the behaviour of the brain in torsion, we first analyse the data,



and then reproduce the mechanical tests theoretically. Finally, we perform finite element simulations in Abaqus.

4.1 Theory

Here, we calculate the torque τ and the normal force N_z required to maintain a cylindrical sample of initial radius R_0 and initial height L_0 in a state of torsion.

As mentioned in Section 2.2, the normal force was set to zero before commencing each test. However, the force transducer of the HR2 rheometer has a sensitivity of 0.01 N, so that variations of the force within that range are not detected by the instrument. We therefore expect that the sample undergoes a small contraction prior to the transducer picking up a meaningful value for the force. Mathematically, we superpose an axial contraction to the actual rotation so that the total deformation is written in cylindrical coordinates as follows:

$$r = R/\sqrt{\lambda}, \quad \theta = \Theta + \phi\lambda Z, \quad z = \lambda Z, \quad (1)$$

where λ is the (tensile or compressive) pre-stretch, $\phi = \alpha/(\lambda L_0)$ is the twist per unit height and α is the angle of rotation in radians. Here, (R, Θ, Z) and (r, θ, z) identify the coordinates of vector points $\mathbf{X} = RE_r + \Theta E_\theta + ZE_z$ and $\mathbf{x} = r\mathbf{e}_r + \theta\mathbf{e}_\theta + z\mathbf{e}_z$ in the undeformed (initial) and deformed (twisted) configurations of the sample, respectively. The deformation gradient $\mathbf{F} = \partial\mathbf{x}/\partial\mathbf{X}$ associated with the deformation in eqn (1) is then:

$$\mathbf{F} = \begin{pmatrix} 1/\sqrt{\lambda} & 0 & 0 \\ 0 & 1/\sqrt{\lambda} & r\phi\lambda \\ 0 & 0 & \lambda \end{pmatrix}. \quad (2)$$

We are interested in the elastic behaviour of brain matter, which we assume to be isotropic and incompressible. In view of the linear dependence of the torque with respect to the twist and of the normal force with respect to the twist squared highlighted by the results in Fig. 4, we conclude that the constitutive behaviour of the brain must¹⁴ be modelled with a Mooney–Rivlin strain energy function:^{6,15}

$$W = c_1(I_1 - 3) + c_2(I_2 - 3), \quad (3)$$

where c_1 and c_2 are constants, $I_1 = \text{tr}[\mathbf{B}]$, $I_2 = \text{tr}[\mathbf{B}^{-1}]$ and $\mathbf{B} = \mathbf{F}\mathbf{F}^T$. For this model, the shear modulus is $\mu = 2(c_1 + c_2)$. The corresponding constitutive equation for the Cauchy stress $\boldsymbol{\sigma}$ reads:

$$\boldsymbol{\sigma} = 2c_1\mathbf{B} - 2c_2\mathbf{B}^{-1} - p\mathbf{I}, \quad (4)$$

where p is the Lagrange multiplier introduced to enforce incompressibility and \mathbf{I} is the identity matrix.

The principal stretches are the square roots of the eigenvalues of \mathbf{B} . The intermediate stretch $\lambda_1 = \sqrt{\lambda}$ is associated with the radial direction, and the maximum and minimum stretches λ_2 and λ_3 are obtained by solving the following equations:

$$\lambda_2^2\lambda_3^2 = \lambda, \quad \lambda_2^2 + \lambda_3^2 = \frac{1}{\lambda} + \lambda^2 + (\lambda\phi r)^2. \quad (5)$$

The elastic equilibrium of the deformation is translated as the following problem:

$$\frac{d}{dr}\sigma_{rr}(r) + \frac{\sigma_{rr}(r) - \sigma_{\theta\theta}(r)}{r} = 0, \quad \sigma_{rr}(r_0) = 0, \quad (6)$$

with solution:

$$\begin{aligned} \sigma_{rr}(r) &= c_1(r^2 - r_0^2)\lambda^2\phi^2, \\ \sigma_{\theta\theta}(r) &= c_1(3r^2 - r_0^2)\lambda^2\phi^2, \\ \sigma_{zz}(r) &= c_1\left(2\frac{\lambda^3 - 1}{\lambda} + (r^2 - r_0^2)\lambda^2\phi^2\right) + 2c_2\left(\frac{\lambda^3 - 1}{\lambda^2} - r^2\lambda\phi^2\right), \\ \sigma_{\theta z}(r) &= 2(c_2 + c_1\lambda)r\lambda\phi. \end{aligned} \quad (7)$$

These formulas were first established by Rivlin,⁷ see Appendix A for details.

Now, the torque $\tau = 2\pi\int_0^{R_0/\sqrt{\lambda}} r^2\sigma_{\theta z}(r)dr$ and the normal force $N_z = 2\pi\int_0^{R_0/\sqrt{\lambda}} r\sigma_{zz}(r)dr$ that have to be applied to the cylinder to maintain the deformation in (1) are:

$$\tau = \pi R_0^4\left(c_1 + \frac{c_2}{\lambda}\right)\phi = \mathcal{A}\phi, \quad (8)$$

$$\begin{aligned} N_z &= -2\pi R_0^2\left(c_1 + \frac{c_2}{\lambda}\right)\left(\frac{1 - \lambda^3}{\lambda^2}\right) - \pi R_0^4\left(\frac{c_1}{2} + \frac{c_2}{\lambda}\right)\phi^2 \\ &= \mathcal{C} + \mathcal{B}\phi^2, \end{aligned} \quad (9)$$

where the constants \mathcal{A} , \mathcal{B} , and \mathcal{C} are introduced, the parameters c_1 and c_2 are linked by the following relations:

$$c_1 = 2\frac{\mathcal{A} + \mathcal{B}}{\pi R_0^4}, \quad \frac{c_2}{\lambda} = -\frac{\mathcal{A} + 2\mathcal{B}}{\pi R_0^4}, \quad (10)$$

and the pre-stretch λ is the unique real and positive root of the following cubic:

$$2\mathcal{A}(\lambda^3 - 1) - \mathcal{C}R_0^2\lambda^2 = 0. \quad (11)$$

Note, as expected for the Mooney–Rivlin model, the linear dependence of the torque on the twist and of the normal force on the twist squared, see (8) and (9).

Because the shear modulus $\mu = 2(c_1 + c_2)$ is positive, it follows that \mathcal{A} and $-\mathcal{C}$ are positive when $\lambda < 1$ (when the cylinder is contracted prior to the twist). The coefficient \mathcal{B} is associated with the Poynting effect displayed by the sample ($\mathcal{B} < 0$ corresponds to the normal Poynting effect) and is due almost entirely to the twist, whereas the coefficient \mathcal{C} accounts for the pre-stretch only. When $\lambda = 1$, *i.e.* in pure torsion, we have $\mathcal{A} = \pi R_0^4(c_1 + c_2)$, $\mathcal{B} = -\pi R_0^4(c_1/2 + c_2)$, and $\mathcal{C} = 0$. The values of λ in Table 2 show that the samples S_2 and S_3 experience less than 1% pre-stretch; hence, for those two samples, \mathcal{B} provides an effective measure of the exact Poynting effect, *i.e.* in the absence of a normal compressive force, the samples would expand axially.

4.2 Parameter estimation

To fit the data in Fig. 4, we use the open-source software RStudio (version 1.1.383). The function `lm` (from the package `stats`)



Table 1 Estimated elastic parameters: the shear modulus $\mu = 2(c_1 + c_2)$, the Mooney-Rivlin parameter c_2 and the two coefficients of determination for the torque (R_τ^2) and the normal force ($R_{N_z^2}$) data fits. Mean values, calculated over the 9 samples, with standard deviation for μ and c_2 are also reported in the last row

Sample	μ [Pa]	c_2 [Pa]	R_τ^2	$R_{N_z^2}$
S ₁	1232.50	294.45	0.999	0.946
S ₂	1092.31	235.84	0.998	0.939
S ₃	766.95	310.60	0.988	0.966
S ₄	491.14	201.22	0.996	0.958
S ₅	656.96	59.68	0.988	0.87
S ₆	644.59	113.75	0.994	0.92
S ₇	952.36	347.26	0.993	0.947
S ₈	803.12	401.41	0.997	0.925
S ₉	1460.17	710.29	0.995	0.962
Mean \pm SD	900 \pm 312	297 \pm 189		

allows us to perform a linear regression on the data sets $\{\phi, \tau\}$ and $\{\phi^2, N_z\}$. By calling the function `lm` on the set $\{\phi, \tau\}$, we obtain the coefficient \mathcal{A} from eqn (8) and the linear regression on $\{\phi^2, N_z\}$ gives us the coefficients \mathcal{B} and \mathcal{C} appearing in eqn (9).

Moreover, the fit on $\{\phi^2, N_z\}$ uses a weighted (with respect to ϕ^2) least squares method. The weights are given by the values of ϕ^2 , which increase over time as the test progresses. Therefore, data collected at the beginning of the test (which are more uncertain) are weighted less than those collected at the end of the test. Finally, we input the coefficients \mathcal{A} , \mathcal{B} and \mathcal{C} into eqn (10) to get the elastic parameters c_1 and c_2 .

The results of the linear regression are shown in Table 1. The mean values for the elastic parameters are $\mu = 900$ Pa and $c_2 = 297$ Pa, respectively. The dimensions of the nine samples after the compression are summarised in Table 2, where the length ℓ_0 and radius r_0 are given for each sample, as well as the pre-stretch computed from (11) and the maximum values of the highest principal stretch λ_2^{\max} , attained at breaking point close to the top face.

4.3 Computational validation

We performed brain torsion simulations using ABAQUS Standard 6.14-1 to validate our analytical modelling of the deformation.

The initial cylindrical geometry of the sample was obtained by setting the radius $R_0 = 10$ mm and the height $L_0 = \ell_0/\lambda$, calculated according to Table 2. We used a mesh of 78 750

Table 2 Geometry of the samples after pre-compression, prior to twisting: the estimated axial stretch λ , the length $\ell_0 = \lambda L_0$ (measured by the instrument), the radius $r_0 = \lambda^{-1/2} R_0$ of the nine samples and the maximum value of the greatest principal stretch λ_2 before sample breaking

Sample	λ	ℓ_0 [mm]	r_0 [mm]	λ_2^{\max}
S ₁	0.93	12.62	10.36	1.82
S ₂	0.99	16.02	10.05	1.73
S ₃	0.99	15.92	10.05	1.81
S ₄	0.89	12.95	10.59	2.14
S ₅	0.94	13.26	10.31	1.85
S ₆	0.85	14.19	10.84	2.04
S ₇	0.89	9.51	10.59	1.87
S ₈	0.89	12.22	10.59	1.68
S ₉	0.95	10.14	10.26	1.69

hexahedral elements (C3D8) with hybrid formulation to reproduce exact incompressibility and we assigned the Mooney-Rivlin model with material parameters in Table 1 to account for hyperelasticity.

To simulate the twist, we first defined a reference point at the centre of the top surface of the cylinder, which we then coupled with all points on the surface, and finally, we assigned a rotational displacement around the longitudinal axis (ramp form of amplitude 3 rad) whilst setting the other degrees of freedom to zero. The bottom surface of the cylinder was encasted. The output variables were the resultant axial force (RF3) and torque (RM3).

To perform the simulations, we chose two specimens: S₁ and S₂. An additional step, prior to the torsion, was added to simulate the 7% pre-compression (see Table 2) undergone by S₁.

The results are shown in Fig. 5. We see that the numerical simulations validate the predictions of the analytical model described in Section 4.1. The torque and the normal force calculated in Abaqus are consistent with the analytical predictions and the measured data for both cases with and without pre-compression (S₁ and S₂, respectively). We note that there is

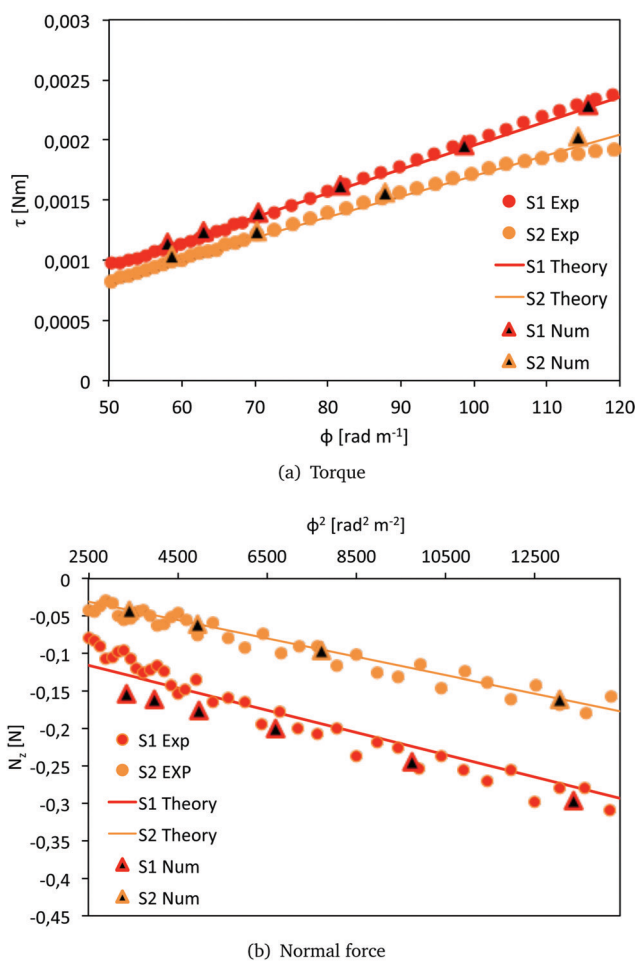


Fig. 5 Comparison of the resultant torque τ and normal force N_z for S₁ and S₂. Results of the numerical simulations in Abaqus (triangles), analytical predictions with the models (8) and (9) (solid lines) and experimental data (red circles for S₁ and orange circles for S₂).



a small mismatch between the analytical and the numerical normal force for S_1 . This is due to the longitudinal bulging of the sample occurring during the 7% pre-compression phase, which results in a non-homogeneous deformation along the axis of the cylinder.

5 Discussion and conclusions

Here, we note that the results presented in Table 1 show that cylindrical samples of brain matter with initial radius $R_0 = 10$ mm twisted at a twist rate $\dot{\phi} = 300 \text{ rad m}^{-1} \text{ s}^{-1}$ behave as Mooney–Rivlin materials with a shear modulus $\mu = 900 \pm 312 \text{ Pa}$. This value is in the same range of values found by Rashid *et al.*¹⁶ when a block of porcine brain matter was sheared at a shear rate of $\dot{\kappa} = 30 \text{ s}^{-1}$, estimated to be conducive to diffuse axonal injury.^{17,18} Moreover, from Table 2, we note that the values of the principal stretch (greatest stretch) λ_2 at the breaking point are in the range of 1.67–2.14, which corresponds to extensions of 67% to 114%. These values of strain are well above the estimated axonal strain thresholds associated with diffuse axonal injury (>0.05)¹⁹ and to white matter damage in the optical nerve (>0.34).²⁰

In addition, here, we are able to directly estimate the second Mooney–Rivlin coefficient c_2 from the normal force data and thus provide a direct measure of the Poynting effect. This quantity cannot be measured from shear stress data alone, although its sign (positive for porcine brain matter) can be deduced by piercing a hole in one of the platens.⁶ We note also that in contrast to simple shear, where a neo-Hookean material ($c_2 = 0$) does not display the Poynting effect,⁶ the same material does have a non-zero normal force in torsion.²¹

Finally, it should be noted that the influences of tissue orientation and anisotropy have not been considered in this study, as the 9 tested samples were all excised from slices in the coronal plane. The orientation of axons within the white matter might play a role in determining the constitutive behaviour of the brain at different length-scales.^{22,23} Testing of brain samples excised from different planes could therefore provide useful information on the effect of anisotropy both at the micro and macro scales.

Another limitation of the study is that all tests were performed at room temperature. Although a general consensus on the matter has not been reached yet, discussions on the effect of temperature on brain stiffness can be found in ref. 24–26.

Our conclusion is that brain matter exhibits a real and large Poynting effect in torsion, which is bound to lead to the development of large normal forces in an impacted brain.

In order to investigate the existence and magnitude of axial forces during twisting head impacts, we used Abaqus/Explicit to simulate a rotational impact with the University College Dublin Brain Trauma Model (UCDBTM) developed by Horgan and Gilchrist.²⁷

We applied a rotational acceleration in the axial plane to the centre of gravity of the head, peaking at 2170 rad s^{-2} . This value of rotational acceleration is in the range of accelerations experienced in boxing.²⁸ We used the mean values of the estimated parameters μ and c_2 in Table 1 to model the mechanical behaviour of the brain matter. In Fig. 6, the distribution of the

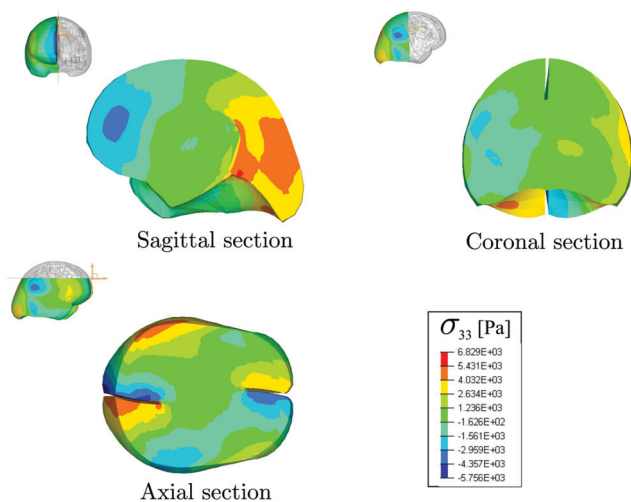


Fig. 6 Results of the FE simulations of a rotational head impact, performed with the UCDBT model. Distribution of the principal Cauchy stress σ_{33} in the sagittal, coronal and axial sections of the brain. In the orange and the blue areas, the peak magnitude of the stress is approximately 4 kPa.

axial stress component σ_{33} (where σ is the Cauchy stress) throughout the brain is shown for a rotational angle of $\alpha = 0.52$ rad. The three sections in the sagittal, coronal and axial planes, respectively, highlight areas where the stress reaches peaks of magnitude in the thousands of Pa. These values indicate that vertical stresses developing during a rotational head impact are of the same order of magnitude as the stiffness μ and are five to ten times larger than the shear stress component σ_{23} , even when the hydrostatic pressure is removed, see ESL,[†] for more details.

Therefore, the high normal stresses developing during rotational impacts could potentially contribute to traumatic brain injury (TBI) during this type of impact. The results presented in this work thus open the path towards further studies to quantify the role played by normal forces in TBI, in particular with a view to defining more accurate threshold criteria for TBI.

Conflicts of interest

There are no conflicts to declare.

Appendix A

By integrating the first of (6) together with the initial condition, we obtain:

$$\begin{aligned}
 \sigma_{rr}(r) &= \int_r^{r_0} \frac{\Sigma_r - \Sigma_\theta(r)}{r} dr \\
 \sigma_{\theta\theta}(r) &= \Sigma_\theta(r) - \Sigma_r + \int_r^{r_0} \frac{\Sigma_r - \Sigma_\theta(r)}{r} dr \\
 \sigma_{zz}(r) &= \Sigma_z(r) - \Sigma_r + \int_r^{r_0} \frac{\Sigma_r - \Sigma_\theta(r)}{r} dr \\
 \sigma_{\theta z}(r) &= c_1 B_{\theta z}(r) - c_2 \frac{B_{\theta z}(r)}{\Sigma}
 \end{aligned} \tag{12}$$



where

$$\Sigma_r - \Sigma_\theta(r) = 2c_1(B_{rr} - B_{\theta\theta}(r)) + 2c_2\left(\frac{B_{zz}}{\Sigma} - \frac{1}{B_{rr}}\right)$$

$$\Sigma_z(r) - \Sigma_r = 2c_1(B_{zz} - B_{rr}) + 2c_2\left(\frac{1}{B_{rr}} - \frac{B_{\theta\theta}(r)}{\Sigma}\right) \quad (13)$$

$$\text{and } \Sigma = B_{zz}B_{\theta\theta}(r) - B_{\theta z}^2(r) = 1/B_{rr}$$

Then, by substituting (2) into (13) and then into (12) we obtain (7).

Acknowledgements

We thank Badar Rashid for Fig. 1(a–c); David McManus for help with the dissection of pig heads; Xiaolin Li for technical assistance with the rheometer; Christiane Görgen for help with fitting in RStudio; and Giuseppe Saccomandi for insightful discussions on the modelling of torsion. The work has received funding from the European Union's Horizon 2020 Research and Innovation Programme under the Marie Skłodowska-Curie grant agreements No. 705532 (Valentina Balbi and Michel Destrade) and No. 642662 (Antonia Trotta and Aisling Ní Annaidh).

Notes and references

- British Standards, British Standards Institution, 2012, BS 903-0:2012.
- K. Miller and K. Chinzei, *J. Biomech.*, 2002, **35**, 483–490.
- B. Rashid, M. Destrade and M. D. Gilchrist, *Comput. Mater. Sci.*, 2012, **64**, 295–300.
- B. Rashid, M. Destrade and M. D. Gilchrist, *J. Mech. Behav. Biomed. Mater.*, 2012, **10**, 23–38.
- B. Donnelly and J. Medige, *J. Biomech. Eng.*, 1997, **119**, 423–432.
- M. Destrade, M. Gilchrist, J. G. Murphy, B. Rashid and G. Saccomandi, *Int. J. Non Linear Mech.*, 2015, **75**, 54–58.
- R. S. Rivlin, *Philos. Trans. R. Soc., A*, 1949, **242**, 173–195.
- P. A. Janmey, M. E. McCormick, S. Rammensee, J. L. Leight, P. C. Georges and F. C. MacKintosh, *Nat. Mater.*, 2007, **6**, 48.
- L. E. Bilston, Z. Liu and N. Phan-Thien, *Biorheology*, 2001, **38**, 335–345.
- K. B. Arbogast and S. S. Margulies, *J. Biomech.*, 1998, **31**, 801–807.
- S. Chatelin, A. Constantinesco and R. Willinger, *Biorheology*, 2010, **47**, 255–276.
- A. Goriely, M. G. Geers, G. A. Holzapfel, J. Jayamohan, A. Jérusalem, S. Sivaloganathan, W. Squier, J. A. van Dommelen, S. Waters and E. Kuhl, *Biomech. Model. Mechanobiol.*, 2015, **14**, 931–965.
- J. H. Poynting, *Proc. R. Soc. London, Ser. A*, 1909, **82**, 546–559.
- R. Mangan, M. Destrade and G. Saccomandi, *Extreme Mech. Lett.*, 2016, **9**, 204–206.
- K. Mendis, R. Stalnaker and S. Advani, *J. Biomech. Eng.*, 1995, **117**, 279–285.
- B. Rashid, M. Destrade and M. D. Gilchrist, *J. Mech. Behav. Biomed. Mater.*, 2013, **28**, 71–85.
- B. Morrison III, H. L. Cater, C. Wang, F. C. Thomas, C. T. Hung, G. A. Ateshian and L. E. Sundstrom, *Stapp Car Crash Journal*, 2003, **47**, 93–105.
- B. Morrison III, H. L. Cater, C. D. Benham and L. E. Sundstrom, *J. Neurosci. Methods*, 2006, **150**, 192–201.
- Y. C. Yap, A. E. King, R. M. Guijt, T. Jiang, C. A. Blizzard, M. C. Breadmore and T. C. Dickson, *PLoS One*, 2017, **12**, e0176997.
- A. C. Bain and D. F. Meaney, *J. Biomech. Eng.*, 2000, **122**, 615–622.
- C. O. Horgan and J. G. Murphy, *J. Elasticity*, 2015, **118**, 127–140.
- S. Budday, G. Sommer, C. Birkl, C. Langkammer, J. Haybaeck, J. Kohnert, M. Bauer, F. Paulsen, P. Steinmann and E. Kuhl, *et al.*, *Acta Biomater.*, 2017, **48**, 319–340.
- J. Van Dommelen, T. Van der Sande, M. Hrapko and G. Peters, *J. Mech. Behav. Biomed. Mater.*, 2010, **3**, 158–166.
- M. Hrapko, J. Van Dommelen, G. Peters and J. Wismans, *J. Biomech. Eng.*, 2008, **130**, 031003.
- J. Van Dommelen, M. Hrapko and G. Peters, *Mechanosensitivity of the Nervous System*, Springer, 2009, pp. 249–279.
- B. Rashid, M. Destrade and M. D. Gilchrist, *J. Mech. Behav. Biomed. Mater.*, 2012, **14**, 113–118.
- T. J. Horgan and M. D. Gilchrist, *International Journal of Crashworthiness*, 2003, **8**, 353–366.
- T. Walilko, D. C. Viano and C. A. Bir, *Br. J. Sports Med.*, 2005, **39**, 710–719.



Supplementary Material: Poynting effect of brain matter in torsion

Valentina Balbi, Antonia Trotta, Michel Destrade, Aisling Ní Annaidh

1 Testing protocol validation

To validate the testing protocol, we further performed torsion tests on two silicon gel samples (G_1 and G_2) at 12.5 rad m^{-1} twist rate. The radius and the height of the samples prior to twisting are reported in Table 1a.

sample	Gel type	λ	l_0 [mm]	r_0 [mm]
G_1	DragonSkin10	0.998	12.14	4.00
G_2	DragonSkinFXPro	0.998	12.40	4.00

sample	μ [Pa]	c_2 [Pa]
G_1	286838.72	20051.70
G_2	191999.03	1954.44

(a) Geometry of the silicon samples after pre-compression, prior to twisting: the estimated axial stretch λ , the length $l_0 = \lambda L_0$ (measured by the instrument), the radius $r_0 = \lambda^{-1/2} R_0$ of the two samples.

(b) Estimated elastic parameters: the shear modulus $\mu = 2(c_1 + c_2)$, the Mooney-Rivlin parameter c_2 .

Table 1: Results of the torsion tests on silicon gel samples.

The results are plotted in Figure 1: the torque and the normal force data (points) are fitted with a Mooney Rivlin model (solid lines) and the coefficient of determination R^2 is shown for each set of data. The estimated elastic parameters μ and c_2 are reported in Table 1b. The normal force data clearly show that a Positive Poynting effect is measured for silicon cylinders as well. (The sign has been inverted from the original output to be consistent with the modelling convention and with the main paper).

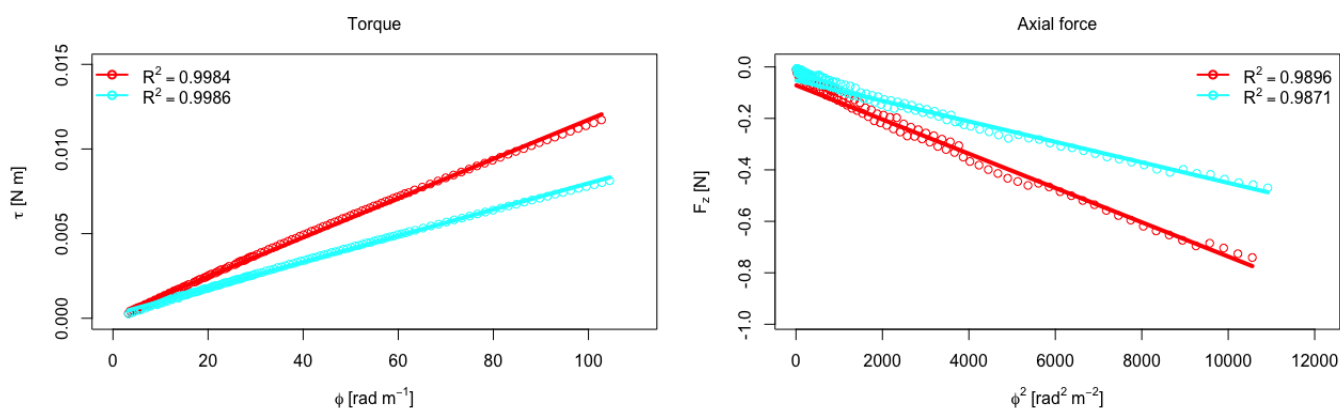


Figure 1: Torque and normal force data collected from the torsion tests at 12.5 rad m^{-1} for sample G_1 (red) and G_2 (cyan); and Mooney-Rivlin model prediction (solid lines).

2 Ramp time

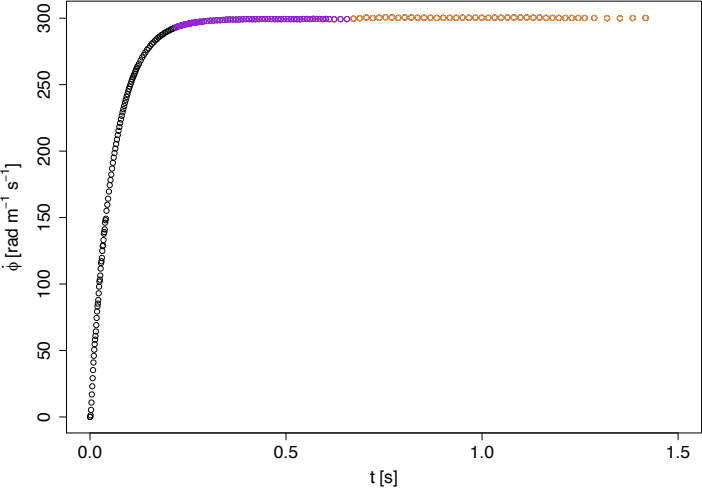


Figure 2: Original collected data on Sample S4: twist rate against time, the ramp data are shown in black; the ramp time is approximately 0.25 sec.

3 Rotational head impact simulations

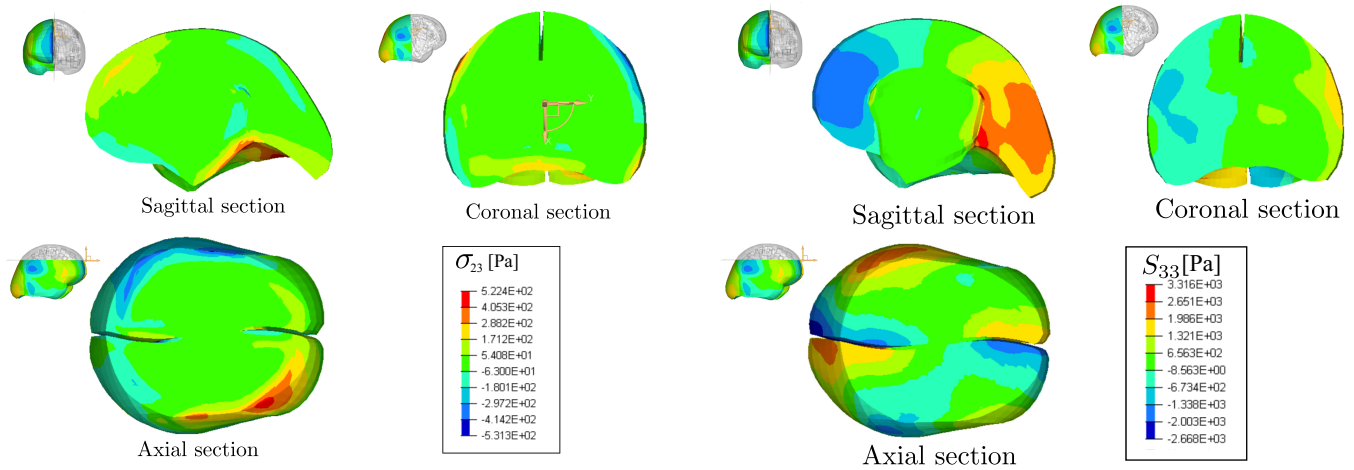


Figure 3: Results of the FE simulations of a rotational head impact, performed with the UCDBT Model. On the left: Distribution of the Cauchy shear stress component σ_{23} across the Sagittal, Coronal and Axial planes; here the orange and blue areas correspond to peak stress magnitude of approximately 0.4 kPa. On the right: Distribution of the deviatoric vertical stress component S_{33} across the Sagittal, Coronal and Axial planes; here the orange and blue areas correspond to peak stress magnitude of approximately 2 kPa (the deviatoric stress is the Cauchy stress minus the hydrostatic stress $\mathbf{S} = \boldsymbol{\sigma} - (1/3)\text{tr}[\boldsymbol{\sigma}]\mathbf{I}$.)

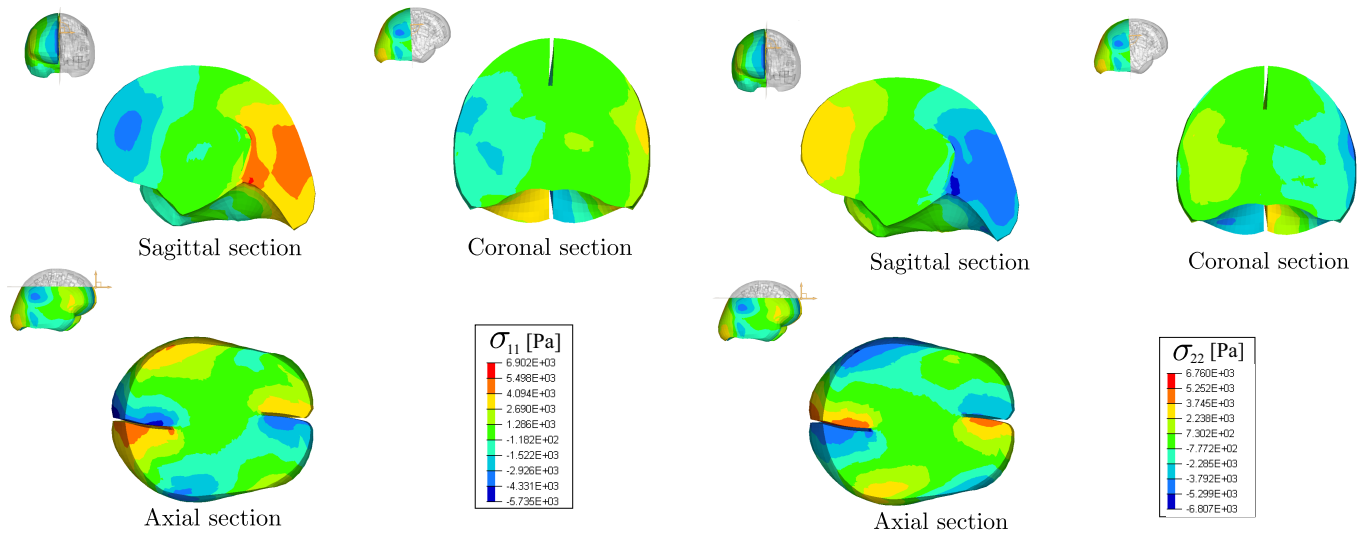


Figure 4: Results of the FE simulations of a rotational head impact, performed with the UCDBT Model. Distribution of the principal Cauchy stress components σ_{11} (on the left) and σ_{22} (on the right) in the Sagittal, Coronal and Axial planes. Here the orange and blue areas correspond to peak stress magnitude of approximately 4 kPa, same as for the vertical stress component σ_{33} , see Figure 6 in the main paper.

4 A remark on differences and similarities between simple shear and torsion

We briefly compare the results obtained here for torsion tests with those obtained elsewhere for simple shear tests and for torsion modelled as simple shear.

We begin by recalling that the deformation gradient for uni-axial compression in the Z direction, followed by simple shear of amount κ in the YZ plane, has the form?

$$\mathbf{F} = \begin{pmatrix} 1/\sqrt{\lambda} & 0 & 0 \\ 0 & 1/\sqrt{\lambda} & \lambda\kappa \\ 0 & 0 & \lambda \end{pmatrix}. \quad (1)$$

Hence, we see from comparison with Equation (2) in the main article that there is a formal connection between torsion and simple shear. However, the equivalence is *local* only, as simple shear is homogeneous but torsion is not: the amount of “shear” experienced by an element in torsion ($\kappa = r\phi = r\alpha/H$) depends on the dimensions of the sample and the position of the element. Thus, it does not make sense to compare the amount of shear and the shear rate experienced by all elements in a simple shear experiment with the amount of “shear” and the “shear” rate experienced by a given element at a given location for a given sample dimension in a torsion experiment. Despite this disconnect, finite shear and torsion are often confused in the literature, and torsion experiments in rheometers are routinely modelled as simple shear, see for example the papers cited in the extensive review by Chatelin et al.?