

How Open Science Can Make Your Life Easier

Michael Mullarkey

Institute for Mental Health Research

Thank you!



WHAT THIS TALK IS NOT

Overview

- Get credit and find new ideas more quickly
- Test research questions without having to spend years collecting the data
- Save time by learning new methods more quickly and easily
- Catch potentially fatal (or just annoying) flaws in research design earlier

Overview

- **Get credit and find new ideas more quickly**
- Test research questions without having to spend years collecting the data
- Save time by learning new methods more quickly and easily
- Catch potentially fatal (or just annoying) flaws in research design earlier

**SUBMITTING A PAPER IS A BIG DEAL,
BUT IT CAN BE KIND OF ANTI-CLIMATIC**



A free preprint service for the psychological sciences
Maintained by [The Society for the Improvement of Psychological Science](#)
[Powered by OSF Preprints](#)

or

[Submit a preprint](#)

[See an example](#)



Using Network Analysis to Identify Central Symptoms of Adolescent Depression

AUTHORS

[Michael Mullarkey](#), [Igor Marchetti](#), [Christopher Beevers](#)

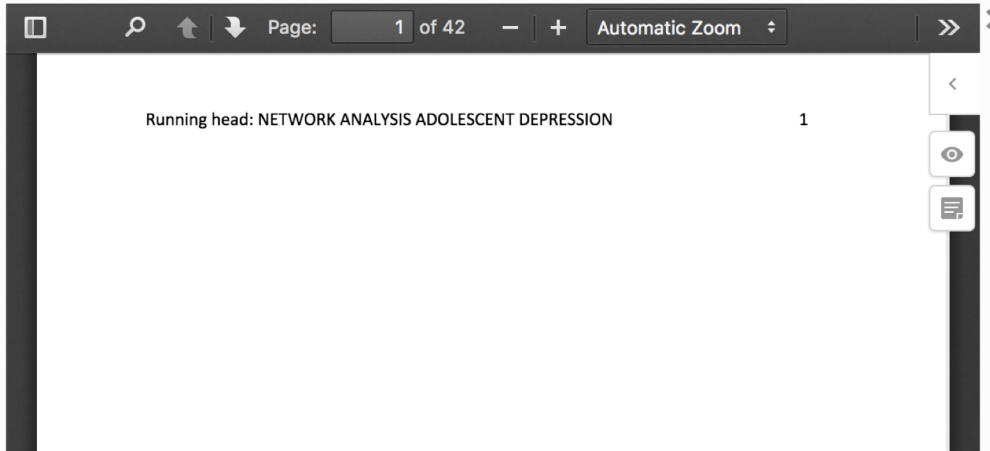
[Edit preprint](#)

CREATED ON
July 20, 2017

LAST EDITED
July 02, 2018

SUPPLEMENTAL MATERIALS
osf.io/2hvfc/

Accepted: PsyArXiv uses post-moderation. This preprint has been accepted by a moderator and is publicly available and searchable.



[Download preprint](#)

Downloads: 511



Abstract

Objective: Experiencing depression symptoms, even at mild to moderate levels, is associated with maladaptive outcomes for adolescents. We used network analysis to evaluate which symptoms (and associations between symptoms) are most central to adolescent depression.

Method: Participants were part of a large, diverse community sample (N = 1,409) of ...

**CAN FIND OUT IMPORTANT INFO
WAY EARLIER THAN NORMAL**



The Replicability and Generalizability of Internalizing Symptom Networks Across Five Samples

AUTHORS

[Carter Funkhouser](#), Kelly Correa

CREATED ON

March 18, 2019

LAST EDITED

March 27, 2019

Overview

- Get credit and find new ideas more quickly
- **Test research questions without having to spend years collecting data**
- Save time by learning new methods more quickly and easily
- Catch potentially fatal (or just annoying) flaws in research design earlier

**IT'S LUDICROUSLY HARD TO COLLECT
ENOUGH DATA AS A STUDENT TO BE
PROPERLY POWERED**

**NUMBER OF PEOPLE NEEDED FOR A
MEDIUM EFFECT SIZE = 74**

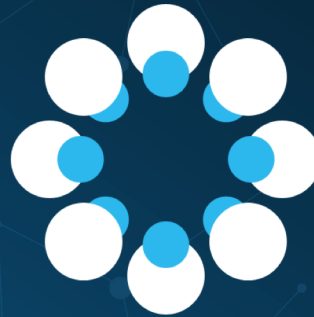
**NUMBER OF PEOPLE NEEDED FOR A
SMALL EFFECT SIZE = 543**

**OFTEN HAVE TO “BALANCE”
RIGOR AND FEASIBILITY**

You have successfully logged out. ✕

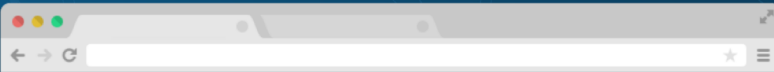
Open Science Framework

A scholarly commons to connect the entire research cycle



FREE AND OPEN SOURCE. START NOW.

Full name





Survey of Health, Ageing and Retirement in Europe

[Home](#)[Organisation](#)[Data Access](#)[Data Documentation](#)[Special Data Sets](#)[SHARE Publications](#)[SHARE Research Results](#)[Press & News](#)[Contact](#)[SHARE Blog](#)[Newsletter](#)[Latest Newsletter](#)

You are here: Home

SHARE - Survey of Health, Ageing and Retirement in Europe

The Survey of Health, Ageing and Retirement in Europe (SHARE) is a multidisciplinary and cross-national panel database of micro data on health, socio-economic status and social and family networks of about 140,000 individuals aged 50 or older (around 380,000 interviews). SHARE covers **27 European countries and Israel**.



The **data** are available to the entire research community **free of charge**. For a summary overview and research results of SHARE, you can download our latest

[Search](#)[News](#)

SHARE Wave 7 data is now available!

We are very happy to announce SHARE Release 7.0.0!

[Read more...](#)

SHARE User Conference 2019 in Budapest, Hungary

Submit your paper now!

[Read more...](#)

Joint German & Dutch SHARE User Workshop

Submit your abstract until March 8th!

[Read more...](#)



Adolescent and School Health

[CDC](#) > [DASH Home](#) > [Data](#) > [YRBSS](#)



 [DASH Home](#)

[About DASH](#) +

Data -

[Data By Topic](#) +

[School Health Profiles](#) +

[SHPPS](#) +

YRBSS -

[Overview](#)

[Results](#)

[Participation Maps](#)

YRBSS Data & Documentation

Youth Risk Behavior Survey (YRBS) data are available in two file formats: Access® and ASCII. The Access and ASCII data can be downloaded and used as is. Additionally, SAS® and SPSS® programs are provided to convert the ASCII data into SAS® and SPSS® datasets for use in those packages. Note: YRBS documentation files on this page are within the following file size ranges: pdfs: 45K-1M; dat files: 3M-5M; sas programs: 2K-15K; sps programs: 2K-25K; zip files: 2M-6M.

On This Page

[Combined YRBS Datasets and Documentation](#)

[National YRBS Datasets and Documentation](#)

[YRBS Dataset File Formats](#)

Combined YRBS Datasets and Documentation

ASCII

The combined YRBS dataset includes national, state and large urban school district data from selected

Access®

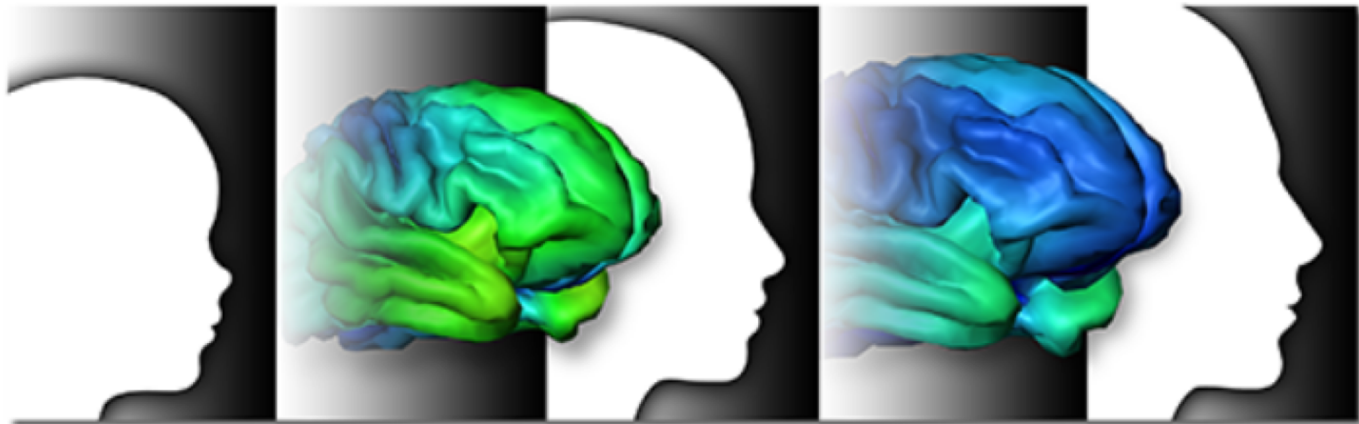
The combined YRBS dataset includes national, state and large urban school district data from selected



OpenNEURO

A free and open platform for analyzing
and sharing neuroimaging data

ABCD Annual Release 2.0 Shared



Adolescent Brain Cognitive Development[®]

Teen Brains. Today's Science. Brighter Future.

Overview

- Get credit and find new ideas more quickly
- Test research questions without having to spend years collecting data
- **Save time by learning new methods more quickly and easily**
- Catch potentially fatal (or just annoying) flaws in research design earlier

**MY DISSERTATION HAS A LOT OF
NETWORK ANALYSIS**

**WITHOUT OPEN CODE I WOULD HAVE
NO IDEA HOW TO DO NETWORK
ANALYSIS**

Tutorials

New to psychological network analysis? Looking for an overview of the literature, or tutorials on how to estimate network models? This site contains a list of introduction and tutorial papers, articles, and blog posts. If you know of other good resources, please let me know so I can update the page.

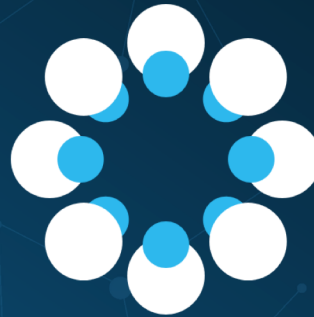
Contents [\[hide\]](#)

- 1 [Workshop materials](#)
- 2 [Psych-networks.com tutorials](#)
- 3 [Conceptual/theory papers and book chapters](#)
- 4 [R-tutorials](#)
 - 4.1 [Blogs](#)
 - 4.2 [Tutorial papers](#)
 - 4.3 [Other media](#)
- 5 [Limitations and criticism of the network approach](#)

You have successfully logged out. ✕

Open Science Framework

A scholarly commons to connect the entire research cycle

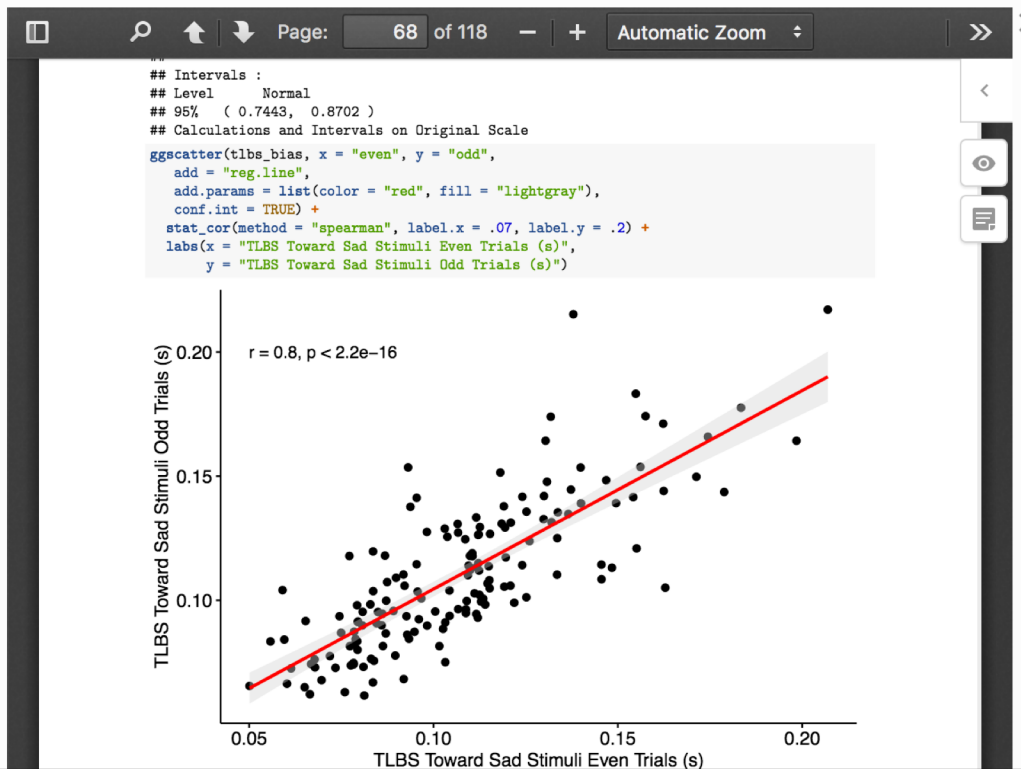


FREE AND OPEN SOURCE. START NOW.

Full name



Accepted: PsyArXiv uses post-moderation. This preprint has been accepted by a moderator and is publicly available and searchable.



Download preprint

Downloads: 302



Abstract

Cognitive models of depression posit that negatively biased self-referent processing and attention have important roles in the disorder. However, depression is a heterogeneous collection of symptoms and it is unlikely that all symptoms are associated with these negative cognitive biases. The current study involved 218 community adults whose ...

[See more](#)

Preprint DOI

[10.31234/osf.io/d3xfh](https://doi.org/10.31234/osf.io/d3xfh)

Peer-reviewed Publication DOI

[10.1037/abn0000405](https://doi.org/10.1037/abn0000405)

**THIS IS SOMETHING THE OPEN SCIENCE
COMMUNITY COULD DO A
BETTER JOB OF ORGANIZING**

Overview

- Get credit and find new ideas more quickly
- Test research questions without having to spend years collecting data
- Save time by learning new methods more quickly and easily
- **Catch potentially fatal (or just annoying) flaws in research design earlier**

**WE ALL DON'T LIKE GETTING CAUGHT
IN A NEVER-ENDING VORTEX
OF ANALYSES**

**HARD TO KNOW WHEN TO STOP
AND WHAT'S "REAL"**

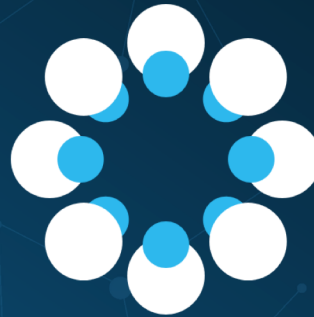
**PLENTY OF TIMES WE'VE KICKED
OURSELVES FOR STUDY DESIGN
CHOICES AFTER THE FACT**

**PRE-REGISTRATION CAN HELP WITH
BOTH PROBLEMS**

You have successfully logged out. ✕

Open Science Framework

A scholarly commons to connect the entire research cycle



FREE AND OPEN SOURCE. START NOW.

Full name

**BUT WHAT IF YOU'RE WORRIED ABOUT
PEOPLE NOT BEING COOL WITH
NULL RESULTS?**

**FIRST, PRE-REG DOESN'T STOP YOU
FROM DOING EXPLORATORY ANALYSES**

Registered Reports: Peer review before results are known to align scientific values and practices.

[Registered Reports](#)

[Participating Journals](#)

[Details & Workflow](#)

[Resources for Editors](#)

[For Funders](#)

[FAQ](#)

[Allied Initiatives](#)

**BUT ARE THOSE JUST FOR NOT SO
GREAT JOURNALS?**

NOPE!

**JOURNAL OF THE AMERICAN ACADEMY
OF CHILD AND ADOLESCENT
PSYCHIATRY**

NATURE HUMAN BEHAVIOR

**ALSO MIGHT BE WORTH THINKING
HARD ABOUT WHAT OUR DEFINITION
OF A “GOOD” JOURNAL IS**

CONCLUSIONS

**PREPRINTS CAN HELP YOU GET CREDIT
AND LEARN NEW STUFF EARLIER**

**OPEN DATA CAN HELP YOU TEST
YOUR RESEARCH QUESTIONS**

**SEEKING OUT OPEN CODE CAN
HELP YOU LEARN NEW ANALYSES**

**PRE-REGISTRATION AND REGISTERED
REPORTS CAN HELP FIX STUDY DESIGN
PROBLEMS WHEN IT'S MORE HELPFUL**

QUESTIONS?