

Northumbria Research Link

Citation: Hurley, Daniel, Luque-Sastre, Laura, Parker, Craig T., Huynh, Steven, Eshwar, Athmanya K., Nguyen, Scott V., Andrews, Nicholas, Moura, Alexandra, Fox, Edward M., Jordan, Kieran, Lehner, Angelika, Stephan, Roger, Fanning, Séamus and D'Orazio, Sarah E. F. (2019) Whole-Genome Sequencing-Based Characterization of 100 *Listeria monocytogenes* Isolates Collected from Food Processing Environments over a Four-Year Period. *mSphere*, 4 (4). e00252-19. ISSN 2379-5042

Published by: American Society for Microbiology

URL: <https://doi.org/10.1128/msphere.00252-19> <<https://doi.org/10.1128/msphere.00252-19>>

This version was downloaded from Northumbria Research Link:
<http://nrl.northumbria.ac.uk/40558/>











Northumbria University has developed Northumbria Research Link (NRL) to enable users to access the University's research output. Copyright © and moral rights for items on NRL are retained by the individual author(s) and/or other copyright owners. Single copies of full items can be reproduced, displayed or performed, and given to third parties in any format or medium for personal research or study, educational, or not-for-profit purposes without prior permission or charge, provided the authors, title and full bibliographic details are given, as well as a hyperlink and/or URL to the original metadata page. The content must not be changed in any way. Full items must not be sold commercially in any format or medium without formal permission of the copyright holder. The full policy is available online: <http://nrl.northumbria.ac.uk/policies.html>

This document may differ from the final, published version of the research and has been made available online in accordance with publisher policies. To read and/or cite from the published version of the research, please visit the publisher's website (a subscription may be required.)

www.northumbria.ac.uk/nrl



Whole-Genome Sequencing-Based Characterization of 100 *Listeria monocytogenes* Isolates Collected from Food Processing Environments over a Four-Year Period

 Daniel Hurley,^{a,b}  Laura Luque-Sastre,^a  Craig T. Parker,^c Steven Huynh,^c Athmanya K. Eshwar,^d  Scott V. Nguyen,^a Nicholas Andrews,^a  Alexandra Moura,^e  Edward M. Fox,^f  Kieran Jordan,^g  Angelika Lehner,^d  Roger Stephan,^d  Séamus Fanning^a

^aUCD-Centre for Food Safety, School of Public Health, Physiotherapy and Sports Science, University College Dublin, Dublin, Ireland

^bSchool of Agriculture and Food Science, University College Dublin, Dublin, Ireland

^cWestern Regional Research Center, Produce Safety and Microbiology Research Unit, Agricultural Research Service, U.S. Department of Agriculture, Albany, California, USA

^dInstitute for Food Safety and Hygiene, University of Zurich, Zurich, Switzerland

^eBiodiversity and Epidemiology of Bacterial Pathogens, Institut Pasteur, Paris, France

^fDepartment of Applied Sciences, Northumbria University, Newcastle upon Tyne, United Kingdom

^gFood Safety Department, Teagasc Food Research Centre, Fermoy, County Cork, Ireland

ABSTRACT *Listeria monocytogenes* is frequently found in foods and processing facilities, where it can persist, creating concerns for the food industry. Its ability to survive under a wide range of environmental conditions enhances the potential for cross-contamination of the final food products, leading to possible outbreaks of listeriosis. In this study, whole-genome sequencing (WGS) was applied as a tool to characterize and track 100 *L. monocytogenes* isolates collected from three food processing environments. These WGS data from environmental and food isolates were analyzed to (i) assess the genomic diversity of *L. monocytogenes*, (ii) identify possible source(s) of contamination, cross-contamination routes, and persistence, (iii) detect absence/presence of antimicrobial resistance-encoding genes, (iv) assess virulence genotypes, and (v) explore *in vivo* pathogenicity of selected *L. monocytogenes* isolates carrying different virulence genotypes. The predominant *L. monocytogenes* sublineages (SLs) identified were SL101 (21%), SL9 (17%), SL121 (12%), and SL5 (12%). Benzalkonium chloride (BC) tolerance-encoding genes were found in 62% of these isolates, a value that increased to 73% among putative persistent subgroups. The most prevalent gene was *emrC* followed by *bcrABC*, *qacH-Tn6188*, and *qacC*. The *L. monocytogenes* major virulence factor *inlA* was truncated in 31% of the isolates, and only one environmental isolate (*L. monocytogenes* CFS086) harbored all major virulence factors, including *Listeria* pathogenicity island 4 (LIPI-4), which has been shown to confer hypervirulence. A zebrafish embryo infection model showed a low (3%) embryo survival rate for all putatively hypervirulent *L. monocytogenes* isolates assayed. Higher embryo survival rates were observed following infection with unknown virulence potential (20%) and putatively hypovirulent (53 to 83%) *L. monocytogenes* isolates showing predicted pathogenic phenotypes inferred from virulence genotypes.


IMPORTANCE This study extends current understanding of the genetic diversity among *L. monocytogenes* from various food products and food processing environments. Application of WGS-based strategies facilitated tracking of this pathogen of importance to human health along the production chain while providing insights into the pathogenic potential for some of the *L. monocytogenes* isolates recovered. These analyses enabled the grouping of selected isolates into three putative viru-

Citation Hurley D, Luque-Sastre L, Parker CT, Huynh S, Eshwar AK, Nguyen SV, Andrews N, Moura A, Fox EM, Jordan K, Lehner A, Stephan R, Fanning S. 2019. Whole-genome sequencing-based characterization of 100 *Listeria monocytogenes* isolates collected from food processing environments over a four-year period. mSphere 4:e00252-19. <https://doi.org/10.1128/mSphere.00252-19>.

Editor Sarah E. F. D'Orazio, University of Kentucky

Copyright © 2019 Hurley et al. This is an open-access article distributed under the terms of the [Creative Commons Attribution 4.0 International license](https://creativecommons.org/licenses/by/4.0/).

Address correspondence to Séamus Fanning, sfanning@ucd.ie.

 @danieljhurley_ and @LauraLuque__ et al., WGS characterisation of 100 *Listeria monocytogenes* isolates collected from food processing environments over a 4-year period @agriculture_ie @ASMmicrobiology @FSAInfo #foodsafety #mSphere

Received 23 April 2019

Accepted 12 July 2019

Published 7 August 2019

lence categories according to their genotypes along with informing selection for phenotypic assessment of their pathogenicity using the zebrafish embryo infection model. It has also facilitated the identification of those isolates with genes conferring tolerance to commercially used biocides. Findings from this study highlight the potential for the application of WGS as a proactive tool to support food safety controls as applied to *L. monocytogenes*.

KEYWORDS *Listeria monocytogenes*, foodborne pathogens, persistence, virulence

Listeria monocytogenes is an opportunistic foodborne pathogen with the third highest mortality rate among all bacterial foodborne pathogens in the United States (1). Many cases of human listeriosis arise following consumption of contaminated ready-to-eat foods (2). Listeriosis outbreaks represent an annual economic burden of \$2.8 billion in the United States (3). In Europe, although the incidence of listeriosis is low, the European Food Safety Authority (EFSA) reported 2,206 confirmed human cases among the 28 European member states in 2015 (2). The annual number of cases has increased significantly in Ireland and the European Union (EU) since 2008 (4). For this reason, surveillance programs in food processing facilities can support food safety measures by expediting the detection, monitoring, and characterization of any persistent or sporadic isolates cultured from the production environment as well as the final product (5–8).

L. monocytogenes is ubiquitously found in the natural environment and has the ability to persist in food processing facilities for months and even years, despite the application of sanitation measures (5, 9, 10). The control of *L. monocytogenes* in the food processing industry is essential to reduce risk and protect the consumer (11). Food business operators must have an effective control strategy to minimize the harborage and potential dissemination of *L. monocytogenes* within their domain of responsibility. This includes workflow auditing, effective use of sanitizers, an environmental monitoring program, as well as an assessment of microbial quality for incoming ingredients (12). Any failure in one or more of these strategies can undermine the integrity of the safety program and compromise the safe production of food (11, 13). Persistence of *L. monocytogenes* in food processing facilities often results in the cross-contamination of the final product, increasing the risk of an outbreak (10, 14–16).

Clinical signs of listeriosis manifest in a wide variety of forms from mild gastroenteritis to a severe systemic infection characterized by septicemia and invasion of the central nervous system (CNS). During pregnancy, there is a risk of transplacental transmission leading to maternal-neonatal (MN) infection (17, 18). Although food regulatory authorities consider *L. monocytogenes* isolates to be equally pathogenic, it has been demonstrated that certain serotypes and clonal complexes (CCs) are more commonly encountered in clinical cases (19, 20). *L. monocytogenes* can be classified into four distinct evolutionary lineages (denoted I to IV) with most isolates grouping into lineages I and II (21, 22). Three serotypes in particular, 1/2a (lineage II), which is predominantly isolated from foods, along with serotypes 1/2b and 4b (both lineage I), are responsible for 95% of human cases reported, with 4b being the predominant serotype among clinical isolates and outbreaks (23).

L. monocytogenes CCs are typically divided into the following: (i) infection-associated isolates, which belong to lineage I and are strongly linked with clinical origins (including CC1, CC2, CC4, and CC6), (ii) food-associated isolates, which belong to lineage II and are predominantly within the production environment (including CC9 and CC121), and (iii) intermediate-associated isolates that are isolated from both clinical and food settings (19, 20). Infection-associated isolates, which may harbor *Listeria* pathogenicity island 4 (LIPI-4), are typically considered hypervirulent, as they represent a bigger threat to public health. LIPI-4 carries six genes annotated as cellobiose-type phosphotransferase systems that can enhance invasion, leading to CNS and MN listeriosis (19). In contrast, isolates with reduced pathogenicity can display premature stop codons (PMSCs) in one or more virulence factors, such as *actA*, *inlAB*, and the transcriptional regulator *prfA*, leading to truncated and potentially nonfunctional proteins (19, 24–26).

Epidemiological surveillance of *L. monocytogenes* has been traditionally performed using conventional molecular subtyping techniques, including pulsed-field gel electrophoresis (PFGE), multilocus variable-number tandem-repeat analysis (MLVA), and multilocus sequence typing (MLST) (27–29). These methods provide useful but lower-resolution information that cannot reliably distinguish hypervirulent isolates. In contrast, whole-genome sequencing (WGS) is increasingly being used as the primary epidemiological surveillance tool in national programs, outbreak investigations, and the environmental monitoring programs of food processing facilities to support food safety controls and protect public health (30–33).

In this study, surveillance of *L. monocytogenes* in three food processing environments was conducted over 4 years using WGS and bioinformatic analyses. This approach allowed for (i) assessment of the genomic diversity of *L. monocytogenes*, (ii) identification of potential sources of contamination, cross-contamination routes, and persistence, (iii) determination of the absence or presence of antimicrobial resistance-encoding genes, (iv) assessment of the virulence genotypes of the isolates recovered, and (v) prediction of the potential *in vivo* pathogenicity of *L. monocytogenes* isolates with different virulence genotypes. This study reinforces the utility and power of WGS combined with bioinformatic analyses and facilitated an investigation of the potential *in vivo* pathogenicity of *L. monocytogenes* with different virulence genotypes using the zebrafish embryo infection model. In time, these data can be translated to provide for a refinement of the food processing facility's risk characterization and corrective action strategy.

RESULTS

Distribution of *L. monocytogenes* sublineages by isolation source. The core genome MLST (cgMLST) profile of 1,748 loci was determined for all *L. monocytogenes* isolates, and analyses classified these isolates into 18 different sublineages (SLs). The SL designations were determined from cgMLST results, agreeing with CC designations determined from the seven-gene MLST scheme (see Table S1 in the supplemental material). The BIGSdb-*Lm* platform (<https://bigsdb.pasteur.fr/listeria>) enables the cgMLST genotyping method, which defines cgMLST types (CTs) as groups of cgMLST profiles that differ by up to 7 allelic mismatches out of 1,748 loci and SLs as groups of cgMLST profiles that differ by up to 150 allelic mismatches out of 1,748 loci (34, 35).

The predominant SLs identified included SL101 (21%), SL9 (17%), SL5 (12%), and SL121 (12%) (Fig. 1). SLs recovered from food were SL5, SL7, SL9, SL101, and SL451. Both SL8 and SL121 were identified in the food processing environments studied (Fig. 1). Certain SLs were uniquely recovered from food (including SL1, SL3, SL5, SL6, SL20, SL37, and SL451), whereas others were exclusively isolated from the environment (including SL2, SL31, SL213, SL218, SL288, and SL321) (Fig. 1). Isolates from clinically associated SLs (SL1, SL2, and SL6) were also identified among this collection with lower incidences relative to the incidences of the rest of the study isolates (Fig. 1). Furthermore, a new SL213 was identified and has been contributed to the BIGSdb-*Lm* platform (34).

Identification of putative persistent strains using cgMLST. A total of 37 distinct cgMLST types were identified, the most abundant being CT1526 ($n = 20$), followed by CT1844 ($n = 11$), and CT1828 ($n = 7$), which belong to SL101, SL5, and SL9, respectively (Fig. 2 and Fig. 3A and B). Specific CTs have been repeatedly isolated from both food and environment sources over the 4-year period, suggesting potential persistence (Fig. 3A). In this study, presumptive persistent isolates were defined as the same CT being recovered at least three times in the processing plants with a minimum of 1 year between the first isolation and the last isolation. Based on this definition, six CTs (CT1526, CT1828, CT1833, CT1834, CT1836, and CT1839) were found to presumptively persist within the food processing environments in this study. Of these, 73% harbored a prophage within the *comK* gene (Fig. 3D). A prophage insertion within *comK* has previously been implicated in biofilm formation, persistence in food processing facilities, and virulence (10, 36, 37).

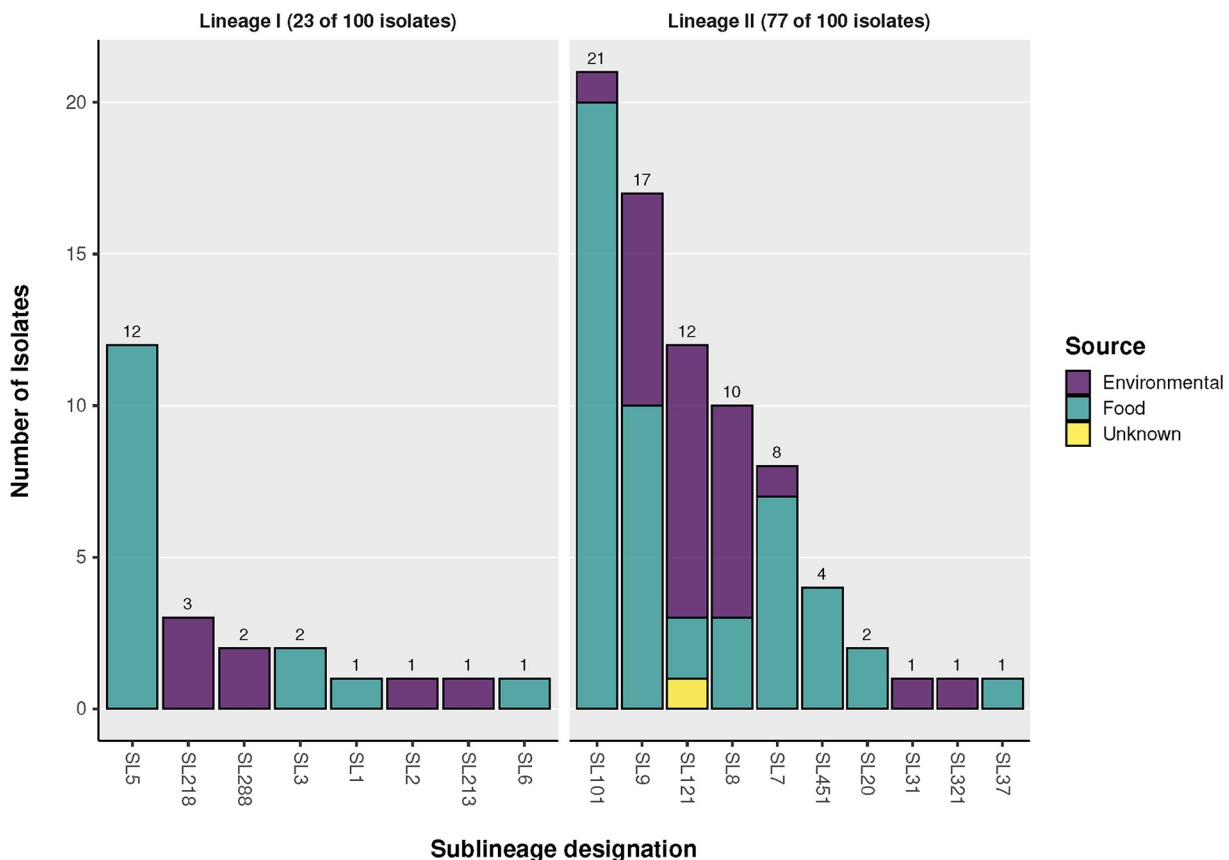


FIG 1 Sublineage distribution and source of *Listeria monocytogenes* isolates. The prevalence of cgMLST sublineages according to their source and evolutionary lineage are shown.

Antimicrobial resistance and stress tolerance islands. The fosfomycin resistance-encoding gene *fosX* was the only antibiotic resistance-encoding gene identified among the study isolates. This gene was present in all 100 isolates with sequence identity at the nucleotide level ranging between 92 and 100% relative to the [AL591981](#) reference sequence.

In contrast, 55% of the isolates harbored BC tolerance-encoding genes (Fig. 3E). The most frequent BC tolerance-encoding gene identified was an efflux pump denoted as *emrC*, which was present in 25% of the isolates studied (38), followed by the previously characterized *bcrABC* cassette (19%) (39, 40). A transporter, QacH, putatively associated with the export of BC and encoded by a gene on transposon Tn6188, was identified in 14% of the isolates (41). Another transporter, QacC (NCBI protein accession no. [WP_000121134.1](#)), which confers resistance to quaternary ammonium compounds, was present in a single isolate (Fig. 3E) (42, 43). These isolates were recovered during a period when sanitizers containing BC compounds were being used in the facility.

Stress survival islet 1 (SSI-1), which has been linked to tolerance toward acidic, bile, gastric, and salt stresses was present in 51% of the isolates and was observed in both lineages I and II (Fig. 3F) (44, 45). Only SL121 isolates (100%) harbored stress survival islet 2 (SSI-2) (data not shown). This island carries the *lin0464* and *lin0465* homolog genes, which are involved in survival under alkaline and oxidative stresses.

Assessment of virulence factor genotypes across different sublineages. The presence and integrity of *Listeria* pathogenicity islands 1 to 4 (LIPI-1 to LIPI-4) were investigated. The *prfA*, *plcA*, and *hly* genes present on LIPI-1 were present in all isolates except for *L. monocytogenes* CFS059 (SL31), where *prfA* was truncated. In 33% of the study isolates, *actA* was found to contain an in-frame internal deletion or truncation.

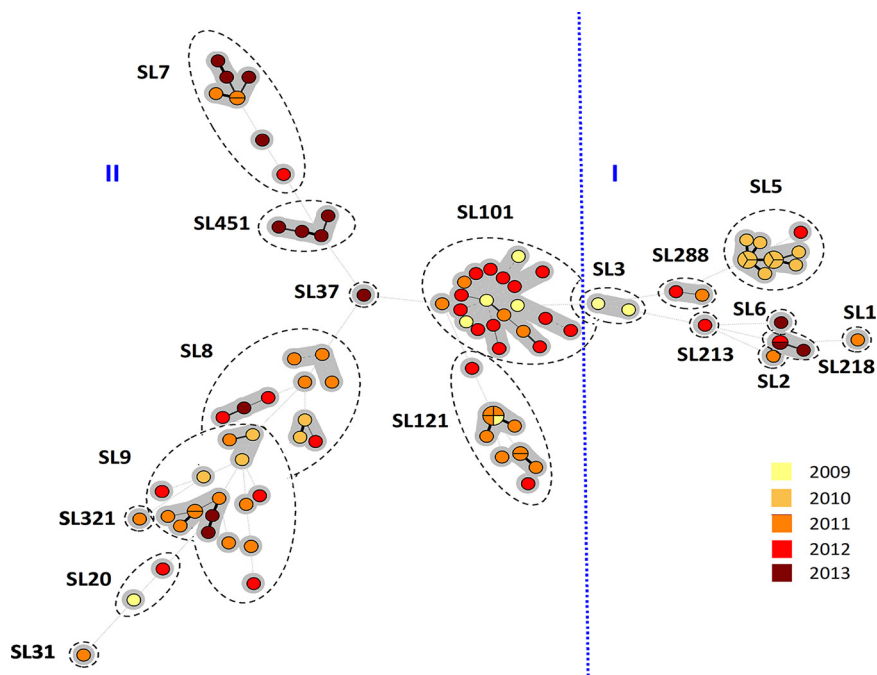


FIG 2 Minimum spanning tree based on the *L. monocytogenes* cgMLST profiles. cgMLST profiles are represented by circles, and the size of the circle is proportional to the number of isolates that share an identical cgMLST profile. Each circle is color coded by the year of isolation, and the length of lines connecting the cgMLST profiles is proportional to the number of allelic differences between circles. Dashed lines represent seven or more allelic differences between cgMLST profiles. A grey zone surrounds the group of circles that share the same cgMLST type (CT). SLs are indicated by dashed-line shapes. The vertical blue dashed line delineates lineage I and lineage II isolates.

Premature stop codons (PMSCs) within *inIA* were identified in 31% of the isolates representing SL9, SL31, SL121, and SL321 isolates (Fig. 3F). All the PMSCs identified were previously reported (46–48) (Table S2). Internal deletions within *inIB* were identified in 11% of the study isolates which all belonged to SL5.

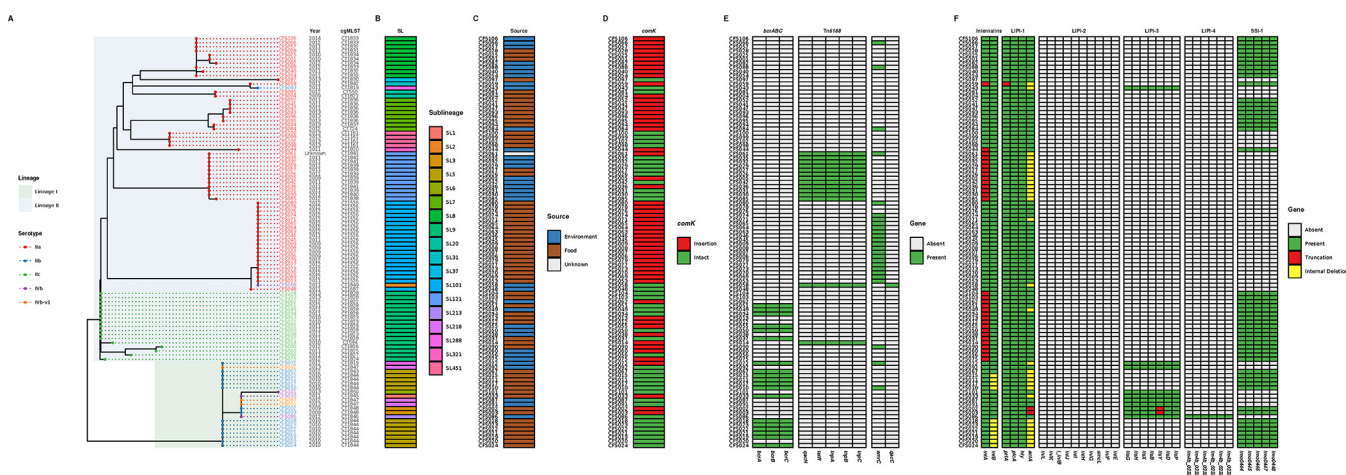


FIG 3 Phylogenetic distribution of study isolates and assessment of the *comK* region, benzalkonium chloride-encoding genotypes, and virulence factor genotypes across different sublineages. (A) The maximum likelihood phylogenetic tree based on a SNP matrix is color coded according to the serogroup as determined *in silico* from the WGS data of the isolates at the tip. The evolutionary lineage is highlighted in light green (lineage I) and blue (lineage II). (B) The year of isolation, cgMLST, and SL are added from left to right, followed by the source (C) and the *comK* gene (D) shown as either intact (green tiles) or disrupted (red tiles). (E) The next three columns show those genes associated with resistance to BC (presence [green] or absence [white] of gene). *tnpABC*, *tetR*, and *qacH* are encoded within Tn6188 (HG329628). *bcrABC* may be carried on a plasmid or on the chromosome. *emrC* is carried on plasmid pLMST6 (Hx2000053480), and *qacC* is carried on plasmid pK5 (KJ792090.1). (F) The heatmap depicts the presence (green) or absence (grey) of proteins involved in *L. monocytogenes* virulence. When mutations, such as premature stop codons and internal deletions, were identified, they were highlighted in red and yellow, respectively.

LIPI-3 was present in nine lineage I isolates (SL1, SL3, SL6, SL213, SL218, and SL288) and a single lineage II isolate (SL288). A truncation was observed in the *llyY* gene carried on LIPI-3 in both *L. monocytogenes* CFS002 and CFS003 (both SL3). This gene encodes a putative posttranslational modification enzyme involved in oxazole production. The observed *llyY* alteration was previously reported in CC3 isolates (19). LIPI-2 was not observed in any of the study isolates, whereas *L. monocytogenes* CFS086 (SL213) was the only isolate containing LIPI-4 (Fig. 3F).

Previous studies have explored epidemiological data and the genomic traits associated with *L. monocytogenes* virulence (19, 49). *L. monocytogenes* containing PMSCs within *inlA* are putatively hypovirulent, whereas isolates with *actA* and *inlB* mutations are considered as having unknown virulence potential. Last, isolates belonging to clinically associated clones (including CC1, CC2, CC4, and CC6) are classified as putatively hypervirulent.

SNP analysis and persistence. Single nucleotide polymorphism (SNP) analyses were conducted on the isolate sequencing data for presumptive persistent CTs. SNP calls were made in comparison to a reference genome selected by leveraging all publicly available RefSeq genomes for *Listeria*. Briefly, a distance matrix of representative genomes for all nonredundant *Listeria* RefSeq genome clusters was generated using average nucleotide identity to determine the “closest” reference isolate to the study isolates from presumptive persistent CTs.

The SNP analyses facilitated the identification of highly similar isolates, such as those belonging to CT1526, which were found to differ from the genome assembly GCF_003031955 by 1 to 17 SNPs. These isolates were cultured from raw food products (vegetables) over a 3-year period, suggesting that the raw ingredient supply was contaminated (Fig. 4A). Three isolates (CFS001, CFS025, and CFS082) were cultured from both environment and food sources and differed from the genome assembly GCF_001952775 by 0 to 5 SNPs (Fig. 4B). Similarly, SNPs identified in isolates within CT1828 differed from the genome assembly GCF_002557735 by only 0 to 5 SNPs and were cultured from both food and environmental sources, suggesting cross-contamination within the food processing facility (Fig. 4C). Isolates from CC101 were mostly CT1526 ($n = 21$) and differed from the genome assembly GCF_001952775 by 1 to 17 SNPs (Fig. 4D). Last, a group of isolates in CT1839 differed from the genome assembly GCF_003030165 by 0 to 2 SNPs and were isolated less than 2 years apart from both food and environmental sources (Fig. 4E).

Pathogenicity of selected *L. monocytogenes* with different virulence genotypes in a zebrafish embryo model of infection. The pathogenicity of selected *L. monocytogenes* isolates with different virulence genotypes was characterized using a zebrafish embryo model of infection. Embryos aged 2 days postfertilization were separately microinjected into the caudal vein with wild-type *L. monocytogenes* EGD-e, four putatively hypovirulent isolates (*L. monocytogenes* CFS027 [SL121], CFS037 [SL9], CFS049 [SL9], and CFS059 [SL31]), one unknown virulence potential isolate (*L. monocytogenes* CFS002 [SL3]), and two putatively hypervirulent isolates (*L. monocytogenes* CFS086 [SL213] and CFS087 [SL218]). The survival rate of the embryos was monitored for 72 h postinfection (hpi).

Infection with wild-type *L. monocytogenes* EGD-e caused a rapid decrease in the survival rate of the embryos to 13% at 24 hpi, whereas embryos infected with putatively hypovirulent *L. monocytogenes* CFS027, CFS037, and CFS049 showed a significantly higher survival rate of 77 to 87% at 24 hpi relative to infection with strain EGD-e. Embryos infected with *L. monocytogenes* CFS037 or CFS049, which both harbor the PMSC type 11 in *inlA*, demonstrated similar survival curves. *L. monocytogenes* CFS059 harbors a truncation in *prfA*, the PMSC type 5 in *inlA* and an internal deletion in *actA*. Embryos infected with *L. monocytogenes* CFS059 exhibited the highest survival rate calculated at 97% at 24 hpi (Fig. 5A).

Embryos infected with *L. monocytogenes* putatively hypervirulent isolates CFS086 and CFS087 showed a rapid decrease in survival rate to 37 or 47%, respectively, at 24

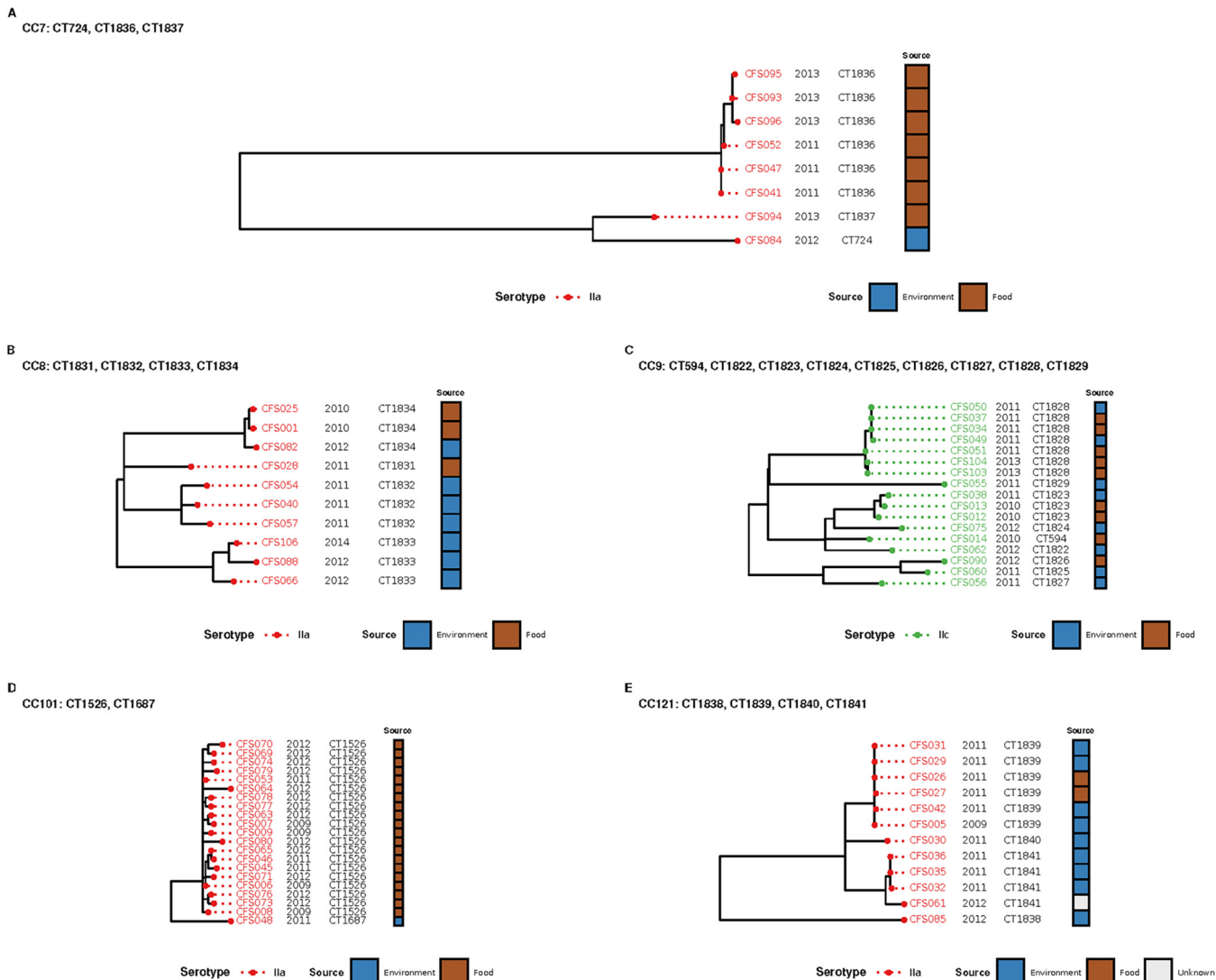


FIG 4 Approximate maximum likelihood phylogenetic trees based on SNP analyses of putatively persistent CTs. (A to E) Phylogenetic trees of CC7 with presumptive persistent CT1836 (A), CC8 with presumptive persistent CTs (CT1833 and CT1834) (B), CC9 with presumptive persistent CT1828 (C), CC101 with presumptive persistent CT1526 (D), and CC121 with presumptive persistent CT1839 (E).

hpi relative to unknown virulence potential and putatively hypovirulent isolates. Furthermore, embryos infected with CFS086 and CFS087 showed a lower survival rate compared to embryos infected with the unknown virulence potential isolate *L. monocytogenes* CFS002 at 48 and 72 hpi (Fig. 5A). Although *L. monocytogenes* CFS086 was the only study isolate harboring LIPI-4, embryos infected with CFS087 showed a lower survival rate at 48 hpi relative to CFS086 with survival rates at 72 hpi being the same (Fig. 5A and B).

DISCUSSION

WGS is frequently used in public health settings for outbreak investigations (31, 33, 50–53), rather than for surveillance in food processing environments, to enhance the understanding of origin, cross-contamination, reservoir, and possible persistence of certain subpopulations along the food chain. In this study, WGS was applied as a surveillance tool for tracking *L. monocytogenes* in three related food processing environments over a 4-year period.

Previous studies reported high prevalence of ST9 *L. monocytogenes* in food processing facilities and in meat products from Spain and China (54, 55). In this study, 32% of

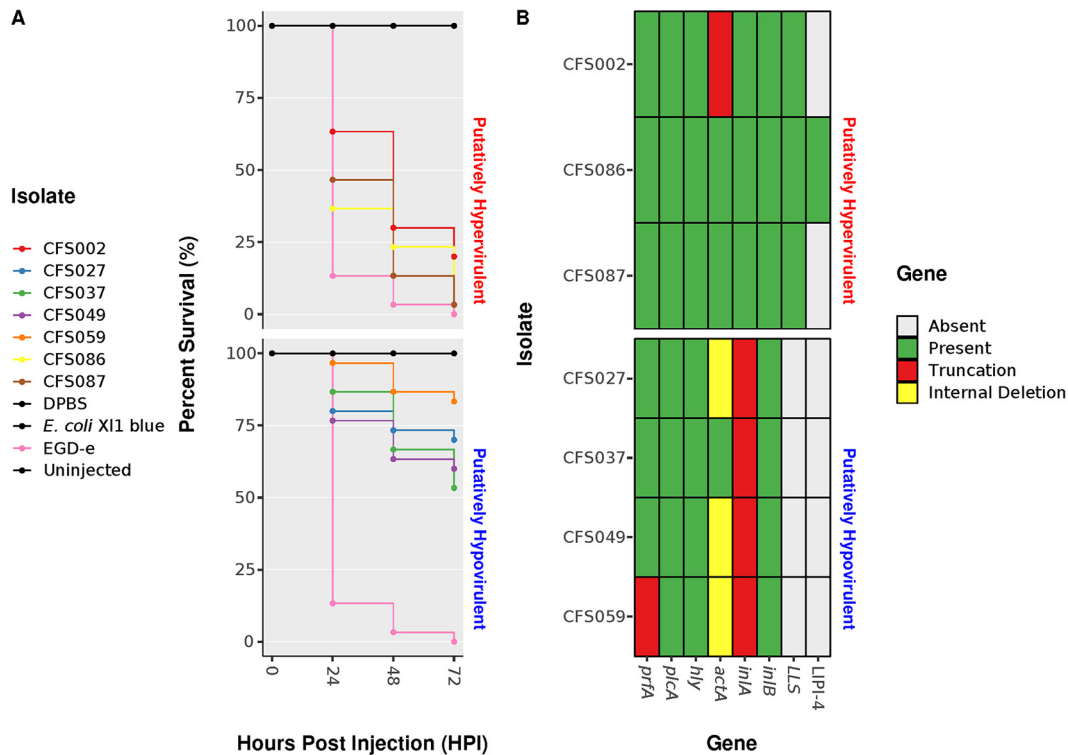


FIG 5 (A) Survival curves of zebrafish embryos injected with *L. monocytogenes* putatively hypovirulent isolates and *L. monocytogenes* unknown virulence potential and putatively hypervirulent isolates. Uninjected embryos and embryos injected with *L. monocytogenes* EGD-e, DPBS, and *E. coli* XL1-Blue were used as controls. (B) Heatmap showing the presence or absence of genes. Mutations, such as premature stop codons and internal deletions, are also shown.

the isolates originating from meat belonged to SL5, and 41% belonged to either SL7 or SL9. Furthermore, the most commonly identified SL among vegetable samples was SL101 at 69%.

Analysis of the data obtained from cgMLST genotyping allowed for the comparison of the core genome and the identification of highly similar isolates. The CT nomenclature facilitated the identification of international isolates with the same CTs. For example, a human isolate in Denmark was previously identified as CT550, whereas CT594 and CT724 were reported earlier in food matrices in France and England, respectively (35). In contrast, CT1819 and CT1850 were first encountered in this study and submitted to the BIGSdb-*Lm* database (34).

Six presumptive persistent CTs were selected for further SNP analyses, as these had been isolated at least three times with a minimum of 1 year between the first and the last isolations. The SNP analyses facilitated the identification of two different cross-contamination scenarios that can be hypothesized as follows. (i) The bacterium was introduced via the raw product, as closely related isolates were found in the raw product from three separate processing environments (cross-contamination events leading to the seeding of the food processing environment and the final product [e.g., isolates typed as CT1828]). (ii) The bacterium was introduced from the food processing environment to the final product or vice versa (e.g., isolates typed as CT1839).

Evidence of a contaminated raw ingredient supply was identified, as three CTs (CT1526, CT1828, and CT1836) were found repeatedly among the isolates from raw ingredients over 3, 2, and 2 years, differing by only 1 to 17, 0 to 5, and 1 to 6 SNPs, respectively. Isolates belonging to CT1836 were found repeatedly over a period of just under 3 years, differing by only 0 to 4 SNPs. Similarly, CT1828 isolates were recovered repeatedly over 2 years and differed by 0 to 5 SNPs. Isolates within CT1839 of SL121 differed by 0 to 2 SNPs, and all harbored transposon Tn6188, which encodes QacH, conferring potential resistance to benzalkonium chloride (BC), along with the SSI-2

stress survival operon (13, 37, 53). These two genomic traits may have conferred an advantage to survive under stress conditions which are routinely encountered in food processing environments (42, 43, 56).

BC tolerance genes (*bcrABC*, *emrC*, and *qacCH*) were identified in 73% of the presumptive persistent isolates. The most common BC tolerance gene identified was *emrC*, the efflux transporter associated with meningitis cases in the Netherlands (38). Interestingly, *emrC* was found in isolates of ST101 and not in ST6, as previously described by Kremer et al. (38). *bcrABC*, originally identified in *L. monocytogenes* isolated in Canada, was predominant among isolates from SL5 and SL9 (57). *emrE*, carried on the genomic island (LGI1) (42), was not found among the isolates tested, although it has been reported in isolates from Finland (58). Isolates that harbor BC tolerance genes may confer an advantage for survival under stress and in food processing settings, allowing the bacteria to persist in the environment (59, 60).

The *comK* gene, which has been hypothesized to be involved in virulence, biofilm formation, and persistence in food processing facilities (10, 36, 37), was found to be interrupted by the insertion of a prophage in 53% of the presumptive persistent CT isolates (44% of nonpersistent CT isolates). Although the percentage of putative persistent isolates carrying a prophage insertion within *comK* together with BC tolerance genes was considerable, isolates did not always harbor both genomic traits at the same time.

Examining the genomes of isolates in this study for virulence traits showed that the panel could be classified as putatively hypovirulent, unknown virulence potential, and putatively hypervirulent as previously described (19). *L. monocytogenes* containing PMSC mutations within *inlA* were considered putatively hypovirulent, as it has been demonstrated to be the main feature associated with loss of virulence, attenuating the ability of these bacteria to invade nonphagocytic cells (19, 61–63). In this study, putatively hypovirulent isolates were identified in SL9, SL31, SL121, and SL321, as these SLs harbor PMSCs within *inlA*, the most commonly identified mutation being PMSC type 6 (see Table S2 in the supplemental material). Furthermore, SL31 and SL121 harbored an in-frame internal deletion within *actA*, suggesting that these isolates may have reduced intracellular mobility.

L. monocytogenes isolates with unknown virulence potential represent intact virulence factors (for those factors studied, see Fig. 3E) as well as isolates harboring fewer mutations within virulence factors such as *actA* and *inlB*. Isolates from SL3, SL5, SL7, SL8, SL20, SL37, and SL101 are examples of unknown virulence potential. However, isolates from SL5 also harbored an in-frame internal deletion within *actA* and *inlB*.

Typically, clinically associated SLs are considered to be putatively hypervirulent (19, 29). These SLs show a low occurrence of mutations within the major virulence factors and possess a greater number of additional virulence factors, such as the LIPI-3 island that carries the gene encoding the hemolysin listeriolysin S, which contributes to the intracellular survival of *L. monocytogenes* in human polymorphonuclear neutrophils (64). Hypervirulent strains have also been shown to possess the recently described pathogenicity island LIPI-4, that confers hypervirulence by enhancing invasion of the CNS and placenta (19, 65). Fortunately, there was a low occurrence of putatively hypervirulent isolates in the food processing environments studied, despite isolates belonging to SL1, SL2, and SL6 being identified. Of note, the environmental isolate *L. monocytogenes* CFS086, from the newly identified sublineage SL213, harbored LIPI-4. LIPI-4 is highly prevalent in SL4, but it has also been identified in *L. monocytogenes* from SL87, SL88, SL315, SL569, and SL619 (34). Although the occurrence of putatively hypervirulent isolates was low, their association with food processing environments could have broad public health implications (41, 66).

The zebrafish embryo infection model was used to investigate the *in vivo* virulence potential of *L. monocytogenes* isolates with different virulence genotypes. Previous studies have used the zebrafish embryo infection model to investigate *L. monocytogenes* and its interaction with the host innate immune system (67, 68). Zebrafish embryo infections with putatively hypovirulent, unknown virulence potential, and

putatively hypervirulent *L. monocytogenes* isolates showed different survival rates according to the virulence genotype of the isolate. Embryos infected with putatively hypervirulent and unknown virulence potential isolates showed a rapid decrease in survival rate after 24 hpi (37 to 47%), whereas embryos infected with putatively hypovirulent isolates required 72 hpi to decrease zebrafish embryo viability, resulting in a survival rate of 53 to 83% (Fig. 5A and B). In contrast, at 72 hpi, putatively hypervirulent isolates CFS086 and CFS087 exhibited 97% lethality, whereas the putatively hypovirulent isolate CFS037 showed a lethality of only 47%. These data support the approach used in this study to classify the potential virulence of *L. monocytogenes* isolates through WGS analyses, again highlighting the predictive advantage of this approach over traditional molecular subtyping approaches for a much broader range of genetic characteristics.

In food processing sites, surveillance and early detection are crucial to control *L. monocytogenes* occurrence and avoid cross-contamination. This study demonstrated the application of a WGS-based approach as a useful surveillance tool, in combination with a bioinformatic analysis targeting known biomarkers associated with persistence, antimicrobial resistance, as well as predicted hypovirulent and hypervirulent phenotypes. This approach facilitated the early identification and localization of presumptive persistent isolates within the food processing environment over a 4-year period. This information can be used to improve the management of the food processing environment, highlighting the need for adjustments to sanitation plans as required, while taking additional corrective actions when necessary. Furthermore, the development of robust and well-documented bioinformatic workflows, such as the CFSAN SNP pipeline, will enable deeper characterization of *L. monocytogenes* that will be of direct benefit to a food processing facility while maintaining consumer confidence through the protection of public health.

MATERIALS AND METHODS

Bacterial strains and growth conditions. Over 4 years, from September 2009 to January 2014, routine surveillance was carried out in three meat and vegetable processing facilities on selected products in different stages of production in parallel with the food processing environments. A total of 100 *L. monocytogenes* isolates were cultured from environmental and food samples using ALOA One Day detection protocol (bioMérieux, Hampshire, UK), previously validated by ISO 16140:2003 and AFNOR/AES 10/3-09/00 (69). Among the 100 *L. monocytogenes* isolates, 35 were isolated from the environment and 64 from foods, with 1 having an unknown isolation source. The bacterial isolates used in this study are listed in Table S1 in the supplemental material.

The ALOA One Day detection protocol consisted of a two-step method, involving an enrichment step in half-Fraser broth for 24 h at 30°C and a detection step that requires plating 0.1 ml of the enriched culture on one ALOA plate and incubating for 24 h at 37°C. *L. monocytogenes* isolates were grown in brain heart infusion (BHI) (Oxoid, Hampshire, UK) broth with orbital shaking (200 rpm) at 37°C. Isolates were stored at -80°C in cryogenic vials (Thermo Fisher Scientific Inc., U.S.) containing 10% [vol/vol] glycerol (Sigma, Dublin, Ireland).

Whole-genome sequencing. Genomic DNA from all study isolates was purified using the Wizard genomic DNA purification kit (Promega, US). DNA libraries were prepared using the KAPA Low-Throughput Library Preparation kit with Standard PCR Amplification Module (Kapa Biosystems, Wilmington, MA), following the manufacturer's instructions except for the following modifications. DNA (750 ng) was sheared using an M220 instrument (Covaris, Woburn, MA) in 50- μ l screwcap microtube at 50 peak power, 20 duty factor, 20°C, 200 cycles per burst, and 25-s duration. Adapter-ligated fragments were size selected to 700 to 800 bp following Illumina protocols. Standard desalted TruSeq LT and PCR primers were obtained from Integrated DNA Technologies (Coralville, IA) and used at 0.375 μ M and 0.5 μ M final concentrations, respectively. PCR was reduced to four cycles. Libraries were quantified using the KAPA Library Quantification kit (Kapa Biosystems, Wilmington, MA), with 10- μ l volume and 90-s annealing/extension PCR, before pooling and normalization to 4 nM. Pooled libraries were requantified by droplet digital PCR (ddPCR) on a QX200 system (Bio-Rad), using the Illumina TruSeq ddPCR Library Quantification kit following the manufacturer's protocols, with an extended 2-min annealing/extension time. The libraries were sequenced using a V2 (2 \times 250-bp paired-end) reagent kit on the MiSeq platform (Illumina) at a loading concentration of 13.5 pM, following the manufacturer's protocols.

Genome assembly and annotation. The raw read quality was assessed with FastQC (version 0.11.8), and low-quality sequences were trimmed using Trimmomatic (version 0.39) (70). Trimmed, paired reads were *de novo* assembled using SPAdes (version 3.13.1) (71), and the resulting contigs were assessed with QUAST (version 5.0.2) (72), showing an average N_{50} of 663 kbp across these assemblies. Genome annotation was performed using Prokka (version 1.13.7) (73). Phage sequences were screened using PHASTER (74).

Core genome MLST *in silico* subtyping. The core genome MLST (cgMLST) analysis was performed using the BIGSdb-*Lm* platform (<https://bigsdbs.pasteur.fr/listeria>) (34, 35). The cgMLST scheme consists of 1,748 highly conserved core loci representing 62% of coding regions from the *L. monocytogenes* EGD-e reference strain. This genotyping method defines cgMLST types (CTs) as groups of cgMLST profiles that differ by up to 7 allelic mismatches out of 1,748 loci and a sublineage (SL) as groups of cgMLST profiles that differ by up to 150 allelic mismatches out of 1,748 loci.

PCR serogroup and MLST determination. PCR serogrouping and seven-gene MLST scheme profiles were performed *in silico* for all the isolates studied using BLAST+ (version 2.9.0).

Bioinformatic analyses of whole-genome sequencing data. Genome assemblies were screened for the absence/presence of genes encoding antimicrobial resistance (AMR) using BLAST+ (version 2.9.0) and the ResFinder database (version 3.1.0) (75). Biocide resistance genes (*tetR*, *tnpABC*, *qacH*, *bcrABC*, *emrE*, *emrC*, and *qacC*) and *comK* were screened using the BLASTN algorithm with a minimum nucleotide identity and alignment length coverage of 80%. All genome assemblies were screened for the presence/absence of SSI-2, which includes *lin0464* and *lin0465* homologs using the BLASTN algorithm with a minimum nucleotide identity of 80%.

Assessment of virulence factors. The presence and integrity of virulence factors were assessed using *L. monocytogenes* EGD-e (GenBank accession no. NC_003210.1) as the reference genome for internalin A (*inlA*), internalin B (*inlB*), LIPI-1, and SSI-1. *L. monocytogenes* F2365 was used as the reference genome for LIPI-3 with the protein sequences LMOF2365_RS05570 to LMOF2365_RS05600, while *L. monocytogenes* LM9005581 was used as the reference for LIPI-4 with the protein sequences LM9005581_70009 to LM9005581_70014. Analysis was performed using the BLASTP algorithm with a minimum amino acid identity of 70%, allowing the identification of premature stop codons and internal deletions.

SNP analysis. SNP analyses were conducted using the CFSAN SNP pipeline (version 2.1.0) (76), mapping the raw reads of each genome to a reference assembly using Bowtie2 (version 2.3.5.1) (77). This strategy identified the variant call sites with VarScan (version 2.4.2) (78). SNP analyses were performed separately on presumptive persistent isolates from clonal complex CC7, CC8, CC9, CC101, and CC121. Calls were made in comparison to RefSeq genomes GCF_000568475.1 for CC7, GCF_001952775.1 for CC8, GCF_002557735.1 for CC9, GCF_003031955.1 for CC101, and GCF_003030165.1 for CC121. SNP matrices were used to construct phylogenetic trees using the approximate maximum likelihood approach in FastTree (version 2.1.11) (79).

Maintenance of zebrafish cell lines and husbandry. Zebrafish (*Danio rerio*) strains used in this study were *wik* lines. Adult fish were kept at a 14-h/10-h light/dark cycle at pH 7.5 and 27°C. Eggs were obtained from natural spawning between adult fish which were kept in pairs in individual breeding tanks. Embryos were raised in petri dishes containing E3 medium (5 mM NaCl, 0.17 mM KCl, 0.33 mM CaCl₂, 0.33 mM MgSO₄) supplemented with 0.3 µg/ml of methylene blue at 28°C. From 24 hours postfertilization (hpf), 0.003% 1-phenyl-2-thiourea was added to prevent melanin synthesis. Staging of embryos was performed by the method of Kimmel et al. (80).

Microinjection experimental procedure. Injections were performed using borosilicate glass microcapillary injection needles (Science Products catalog no. 1210332; 1-mm outer diameter, 0.78-mm inner diameter; Science Products, Hofheim, Germany) and a PV830 Pneumatic PicoPump (World Precision Instruments, Sarasota, FL, U.S.). The embryos (48 hpf) were manually dechorionated and anesthetized with 200 mg/liter buffered tricaine (Sigma catalog no. MS-222; Sigma-Aldrich, Buchs, Switzerland) prior to injection. Subsequently, the embryos were aligned on an agar plate and injected with 100 colony-forming units (CFU) (ranging from 90 to 142 CFU) in 1- to 2-µl volume of a bacterial suspension in Dulbecco's phosphate-buffered saline (DPBS) (Sigma-Aldrich, Buchs, Switzerland) directly into the blood circulation (caudal vein). Prior to injection, the volume of the suspension was adjusted by injecting a droplet into mineral oil and measuring its approximate diameter over a micrometer scale bar. The following controls were included: infection with (pathogenic) *L. monocytogenes* EGD-e, infection with (apathogenic) *Escherichia coli* XL1-Blue, injections with DPBS, and noninjected embryos. The number of injected CFU was determined by injection of the same bacterial suspension used in the embryo infection experiments into a DPBS droplet on a BHI agar plate.

After injections, infected embryos were recovered in a petri dish with fresh E3 medium for 15 min. To monitor infection kinetics for survival assays, embryos were transferred into 24-well plates (one embryo per well) with 1 ml of E3 medium per well, incubated at 28°C, and observed for signs of disease and survival with a stereomicroscope twice a day. For survival assays after infection, the number of dead larvae was visually determined based on the absence of a heartbeat.

The number of dead larvae postinfection was determined at various time points visually based on the lack of a heartbeat. Experiments were conducted until 72 hpi. At the end of the infection experiments, embryos that were alive were euthanized with an overdose of 4 g/liter buffered tricaine. Usually, with the evaluation of distress and pain by behavioral observations, embryos were euthanized by prolonged immersion in overdose concentrations of tricaine solution (MS222; 200 to 300 mg/liter) and were left in the solution for at least 10 min until cessation of opercular movement. Since pain sensitivity has not developed at these earlier stages, before 96 to 168 hpf, this is not regarded as a painful technique. The maximum age reached by the embryos during experimentation was 5 days postfertilization (72 hpi) for which no license is required from the Swiss cantonal veterinary office since the embryos had not yet reached the free feeding stage. The methods applied were conducted following the approved guidelines.

Data availability. Accession numbers for raw sequencing data are in Table S1 in the supplemental material. Whole-genome sequencing data have been deposited at the Sequence Read Archive (SRA)

under BioProject accession number [PRJNA422580](https://doi.org/10.1093/bioinformatics/btj111). Individual run accession numbers (SRR) for demultiplexed isolate data are listed in Table S1.

SUPPLEMENTAL MATERIAL

Supplemental material for this article may be found at <https://doi.org/10.1128/mSphere.00252-19>.

TABLE S1, XLSX file, 0.01 MB.

TABLE S2, DOCX file, 0.02 MB.

ACKNOWLEDGMENTS

D.H. was supported by a Food Safety Authority of Ireland Newman Fellowship in Food Safety. L.L.-S. was supported by the Department of Agriculture, Food and the Marine under the Food Institutional Research Measure, project number 11/F008.

We acknowledge the Research IT HPC Service at University College Dublin for providing computational facilities and support that have contributed to the research results reported within this paper.

This study was designed by S.F., N.A., E.M.F., K.J., and R.S. WGS was conducted by C.T.P. and S.H. Bioinformatic analyses were performed by D.H. cgMLST subtyping was performed by A.M. Zebrafish embryo experiments were performed by A.K.E., A.L., and R.S. D.H. and L.L.-S. contributed to writing and revising the manuscript, with all other authors making substantial contributions. All authors agreed on the final version of this article.

REFERENCES

- Scallan E, Hoekstra RM, Angulo FJ, Tauxe RV, Widdowson M-A, Roy SL, Jones JL, Griffin PM. 2011. Foodborne illness acquired in the United States—major pathogens. *Emerg Infect Dis* 17:7–15. <https://doi.org/10.3201/eid1701.p11101>.
- European Food Safety Authority. 2018. *Listeria monocytogenes* contamination of ready-to-eat foods and the risk for human health in the EU. *EFSA J* 16:5134.
- USDA ERS. 2014. Cost estimates of foodborne illnesses. Economic Research Service, US Department of Agriculture, Washington, DC.
- European Food Safety Authority. 2016. The European Union summary report on trends and sources of zoonoses, zoonotic agents and foodborne outbreaks in 2014. *EFSA J* 13:4329.
- Holch A, Webb K, Lukjancenko O, Ussery D, Rosenthal BM, Gram L. 2013. Genome sequencing identifies two nearly unchanged strains of persistent *Listeria monocytogenes* isolated at two different fish processing plants sampled 6 years apart. *Appl Environ Microbiol* 79:2944–2951. <https://doi.org/10.1128/AEM.03715-12>.
- Fagerlund A, Langsrud S, Schirmer BCT, Mørseth T, Heir E. 2016. Genome analysis of *Listeria monocytogenes* sequence type 8 strains persisting in salmon and poultry processing environments and comparison with related strains. *PLoS One* 11:e0151117. <https://doi.org/10.1371/journal.pone.0151117>.
- Ortiz S, López-Alonso V, Rodríguez P, Martínez-Suárez JV. 2016. The connection between persistent, disinfectant-resistant *Listeria monocytogenes* strains from two geographically separate Iberian pork processing plants: evidence from comparative genome analysis. *Appl Environ Microbiol* 82:308–317. <https://doi.org/10.1128/AEM.02824-15>.
- Leong D, NicAogáin K, Luque-Sastre L, McManamon O, Hunt K, Alvarez-Ordóñez A, Scollard J, Schmalenberger A, Fanning S, O'Byrne C, Jordan K. 2017. A 3-year multi-food study of the presence and persistence of *Listeria monocytogenes* in 54 small food businesses in Ireland. *Int J Food Microbiol* 249:18–26. <https://doi.org/10.1016/j.ijfoodmicro.2017.02.015>.
- Ferreira V, Wiedmann M, Teixeira P, Stasiewicz MJ. 2014. *Listeria monocytogenes* persistence in food-associated environments: epidemiology, strain characteristics, and implications for public health. *J Food Prot* 77:150–170. <https://doi.org/10.4315/0362-028X.JFP-13-150>.
- Orsi RH, Borowsky ML, Lauer P, Young SK, Nusbaum C, Galagan JE, Birren BW, Ivy RA, Sun Q, Graves LM, Swaminathan B, Wiedmann M. 2008. Short-term genome evolution of *Listeria monocytogenes* in a non-controlled environment. *BMC Genomics* 9:539. <https://doi.org/10.1186/1471-2164-9-539>.
- Tompkin RB. 2002. Control of *Listeria monocytogenes* in the food-processing environment. *J Food Prot* 65:709–725. <https://doi.org/10.4315/0362-028X-65.4.709>.
- Zacharski KA, Southern M, Ryan A, Adley CC. 2018. Evaluation of an environmental monitoring program for the microbial safety of air and surfaces in a dairy plant environment. *J Food Prot* 81:1108–1116. <https://doi.org/10.4315/0362-028X.JFP-17-464>.
- Fox EM, Wall PG, Fanning S. 2015. Control of *Listeria* species food safety at a poultry food production facility. *Food Microbiol* 51:81–86. <https://doi.org/10.1016/j.fm.2015.05.002>.
- Acciari VA, Iannetti L, Gattuso A, Sonnessa M, Scavia G, Montagna C, Addante N, Torresi M, Zocchi L, Scattolini S, Centorame P, Marfoglia C, Prencipe VA, Gianfranceschi MV. 2016. Tracing sources of *Listeria* contamination in traditional Italian cheese associated with a US outbreak: investigations in Italy. *Epidemiol Infect* 144:2719–2727. <https://doi.org/10.1017/S095026881500254X>.
- Angelo KM, Conrad AR, Saupe A, Dragoo H, West N, Sorenson A, Barnes A, Doyle M, Beal J, Jackson KA, Stroika S, Tarr C, Kucerova Z, Lance S, Gould LH, Wise M, Jackson BR. 2017. Multistate outbreak of *Listeria monocytogenes* infections linked to whole apples used in commercially produced, prepackaged caramel apples: United States, 2014–2015. *Epidemiol Infect* 145:848–856. <https://doi.org/10.1017/S0950268816003083>.
- Awofisayo-Okuyelu A, Arunachalam N, Dallman T, Grant KA, Aird H, McLaughlin J, Painset A, Amar C. 2016. An outbreak of human listeriosis in England between 2010 and 2012 associated with the consumption of pork pies. *J Food Prot* 79:732–740. <https://doi.org/10.4315/0362-028X.JFP-15-456>.
- Drevets DA, Bronze MS. 2008. *Listeria monocytogenes*: epidemiology, human disease, and mechanisms of brain invasion. *FEMS Immunol Med Microbiol* 53:151–165. <https://doi.org/10.1111/j.1574-695X.2008.00404.x>.
- Vázquez-Boland JA, Kuhn M, Berche P, Chakraborty T, Dominguez-Bernal G, Goebel W, González-Zorn B, Wehland J, Kreft J. 2001. *Listeria* pathogenesis and molecular virulence determinants. *Clin Microbiol Rev* 14:584–640. <https://doi.org/10.1128/CMR.14.3.584-640.2001>.
- Maurly MM, Tsai Y-H, Charlier C, Touchon M, Chenal-Francisque V, Leclercq A, Criscuolo A, Gaultier C, Roussel S, Brisabois A, Disson O, Rocha EPC, Brisse S, Lecuit M. 2016. Uncovering *Listeria monocytogenes* hypervirulence by harnessing its biodiversity. *Nat Genet* 48:308–313. <https://doi.org/10.1038/ng.3501>.
- Chenal-Francisque V, Lopez J, Cantinelli T, Caro V, Tran C, Leclercq A, Lecuit M, Brisse S. 2011. Worldwide distribution of major clones of

- Listeria monocytogenes*. Emerg Infect Dis 17:1110–1112. <https://doi.org/10.3201/eid1706.101778>.
21. Orsi RH, den Bakker HC, Wiedmann M. 2011. *Listeria monocytogenes* lineages: genomics, evolution, ecology, and phenotypic characteristics. Int J Med Microbiol 301:79–96. <https://doi.org/10.1016/j.ijmm.2010.05.002>.
 22. Wiedmann M, Bruce JL, Keating C, Johnson AE, McDonough PL, Batt CA. 1997. Ribotypes and virulence gene polymorphisms suggest three distinct *Listeria monocytogenes* lineages with differences in pathogenic potential. Infect Immun 65:2707–2716.
 23. Vines A, Swaminathan B. 1998. Identification and characterization of nucleotide sequence differences in three virulence-associated genes of *Listeria monocytogenes* strains representing clinically important serotypes. Curr Microbiol 36:309–318.
 24. Nightingale KK, Milililo SR, Ivy RA, Ho AJ, Oliver HF, Wiedmann M. 2007. *Listeria monocytogenes* F2365 carries several authentic mutations potentially leading to truncated gene products, including inlB, and demonstrates atypical phenotypic characteristics. J Food Prot 70:482–488. <https://doi.org/10.4315/0362-028X-70.2.482>.
 25. Nightingale KK, Ivy RA, Ho AJ, Fortes ED, Njaa BL, Peters RM, Wiedmann M. 2008. inlA premature stop codons are common among *Listeria monocytogenes* isolates from foods and yield virulence-attenuated strains that confer protection against fully virulent strains. Appl Environ Microbiol 74:6570–6583. <https://doi.org/10.1128/AEM.00997-08>.
 26. Rupp S, Aguilar-Bultet L, Jagannathan V, Guldemann C, Drögemüller C, Pfarrer C, Vidondo B, Seuberlich T, Frey J, Oevermann A. 2015. A naturally occurring prfA truncation in a *Listeria monocytogenes* field strain contributes to reduced replication and cell-to-cell spread. Vet Microbiol 179:91–101. <https://doi.org/10.1016/j.vetmic.2015.03.002>.
 27. Gerner-Smidt P, Hise K, Kincaid J, Hunter S, Rolando S, Hyytiä-Trees E, Ribot EM, Swaminathan B, Pulsenet Taskforce. 2006. PulseNet USA: a five-year update. Foodborne Pathog Dis 3:9–19. <https://doi.org/10.1089/fpd.2006.3.9>.
 28. Murphy M, Corcoran D, Buckley JF, O'Mahony M, Whyte P, Fanning S. 2007. Development and application of multiple-locus variable number of tandem repeat analysis (MLVA) to subtype a collection of *Listeria monocytogenes*. Int J Food Microbiol 115:187–194. <https://doi.org/10.1016/j.jifoodmicro.2006.10.022>.
 29. Ragon M, Wirth T, Hollandt F, Lavenir R, Lecuit M, Le Monnier A, Brisse S. 2008. A new perspective on *Listeria monocytogenes* evolution. PLoS Pathog 4:e1000146. <https://doi.org/10.1371/journal.ppat.1000146>.
 30. Kwong JC, Mercouliou K, Tomita T, Easton M, Li HY, Bulach DM, Stinear TP, Seemann T, Howden BP. 2016. Prospective whole-genome sequencing enhances national surveillance of *Listeria monocytogenes*. J Clin Microbiol 54:333–342. <https://doi.org/10.1128/JCM.02344-15>.
 31. Schmid D, Allerberger F, Huhulescu S, Pietzka A, Amar C, Kleta S, Prager R, Preußel K, Aichinger E, Mellmann A. 2014. Whole genome sequencing as a tool to investigate a cluster of seven cases of listeriosis in Austria and Germany, 2011–2013. Clin Microbiol Infect 20:431–436. <https://doi.org/10.1111/1469-0691.12638>.
 32. Jackson BR, Tarr C, Strain E, Jackson KA, Conrad A, Carleton H, Katz LS, Stroika S, Gould LH, Mody RK, Silk BJ, Beal J, Chen Y, Timme R, Doyle M, Fields A, Wise M, Tillman G, Defibaugh-Chavez S, Kucerova Z, Sabol A, Roache K, Trees E, Simmons M, Wasilenko J, Kubota K, Pouseele H, Klimke W, Besser J, Brown E, Allard M, Gerner-Smidt P. 2016. Implementation of nationwide real-time whole-genome sequencing to enhance listeriosis outbreak detection and investigation. Clin Infect Dis 63:380–386. <https://doi.org/10.1093/cid/ciw242>.
 33. Jackson KA, Stroika S, Katz LS, Beal J, Brandt E, Nadon C, Reimer A, Major B, Conrad A, Tarr C, Jackson BR, Mody RK. 2016. Use of whole genome sequencing and patient interviews to link a case of sporadic listeriosis to consumption of prepackaged lettuce. J Food Prot 79:806–809. <https://doi.org/10.4315/0362-028X.JFP-15-384>.
 34. Jolley KA, Maiden M. 2010. BIGSdb: scalable analysis of bacterial genome variation at the population level. BMC Bioinformatics 11:595. <https://doi.org/10.1186/1471-2105-11-595>.
 35. Moura A, Criscuolo A, Pouseele H, Maury MM, Leclercq A, Tarr C, Björkman JT, Dallman T, Reimer A, Enouf V, Larssonneur E, Carleton H, Bracq-Dieye H, Katz LS, Jones L, Touchon M, Tourdjman M, Walker M, Stroika S, Cantinelli T, Chenal-Francois V, Kucerova Z, Rocha EPC, Nadon C, Grant K, Nielsen EM, Pot B, Gerner-Smidt P, Lecuit M, Brisse S, Mutreja A, Grad YH, Woolhouse MEJ, Rambaut A, Kellam P, van Belkum A, Bogner P, Capua I, Cox NJ, Lipman DJ, Gerner-Smidt P, Grundmann H, Dalton CB, Ragon M, Chenal-Francois V, Haase JK, Didelot X, Lecuit M, Korkeala H, Achtman M, Harris SR, et al. 2016. Whole genome-based population biology and epidemiological surveillance of *Listeria monocytogenes*. Nat Microbiol 2:16185. <https://doi.org/10.1038/nmicrobiol.2016.185>.
 36. Verghese B, Lok M, Wen J, Alessandria V, Chen Y, Kathariou S, Knabel S. 2011. comK prophage junction fragments as markers for *Listeria monocytogenes* genotypes unique to individual meat and poultry processing plants and a model for rapid niche-specific adaptation, biofilm formation, and persistence. Appl Environ Microbiol 77:3279–3292. <https://doi.org/10.1128/AEM.00546-11>.
 37. Rabinovich L, Sigal N, Borovok I, Nir-Paz R, Herskovits AA. 2012. Prophage excision activates *Listeria* competence genes that promote phagosomal escape and virulence. Cell 150:792–802. <https://doi.org/10.1016/j.cell.2012.06.036>.
 38. Kremer PHC, Lees JA, Koopmans MM, Ferwerda B, Arends AWM, Feller MM, Schipper K, Valls Seron M, van der Ende A, Brouwer MC, van de Beek D, Bentley SD. 2016. Benzalkonium chloride resistance genes and outcome in *Listeria monocytogenes* meningitis. Clin Microbiol Infect 23:265.e1–265.e7. <https://doi.org/10.1016/j.cmi.2016.12.008>.
 39. Elhanafi D, Dutta V, Kathariou S. 2010. Genetic characterization of plasmid-associated benzalkonium chloride resistance determinants in a *Listeria monocytogenes* strain from the 1998–1999 outbreak. Appl Environ Microbiol 76:8231–8238. <https://doi.org/10.1128/AEM.02056-10>.
 40. Dutta V, Elhanafi D, Kathariou S. 2013. Conservation and distribution of the benzalkonium chloride resistance cassette bcrABC in *Listeria monocytogenes*. Appl Environ Microbiol 79:6067–6074. <https://doi.org/10.1128/AEM.01751-13>.
 41. Müller A, Rychlik K, Muhterem-Uyar M, Zaiser A, Stessl B, Guinane CM, Cotter PD, Wagner M, Schmitz-Esser S. 2013. Tn6188 - a novel transposon in *Listeria monocytogenes* responsible for tolerance to benzalkonium chloride. PLoS One 8:e76835. <https://doi.org/10.1371/journal.pone.0076835>.
 42. Kovacevic J, Ziegler J, Walecka-Zacharska E, Reimer A, Kitts DD, Gilmour MW. 2016. Tolerance of *Listeria monocytogenes* to quaternary ammonium sanitizers is mediated by a novel efflux pump encoded by emrE. Appl Environ Microbiol 82:939–953. <https://doi.org/10.1128/AEM.03741-15>.
 43. Møretø T, Schirmer BCT, Heir E, Fagerlund A, Hjemli P, Langsrud S. 2017. Tolerance to quaternary ammonium compound disinfectants may enhance growth of *Listeria monocytogenes* in the food industry. Int J Food Microbiol 241:215–224. <https://doi.org/10.1016/j.jifoodmicro.2016.10.025>.
 44. Ryan S, Begley M, Hill C, Gahan C. 2010. A five-gene stress survival islet (SSI-1) that contributes to the growth of *Listeria monocytogenes* in suboptimal conditions. J Appl Microbiol 109:984–995. <https://doi.org/10.1111/j.1365-2672.2010.04726.x>.
 45. Hein I, Klinger S, Dooms M, Flekna G, Stessl B, Leclercq A, Hill C, Allerberger F, Wagner M. 2011. Stress survival islet 1 (SSI-1) survey in *Listeria monocytogenes* reveals an insert common to *Listeria innocua* in sequence type 121 *L. monocytogenes* strains. Appl Environ Microbiol 77:2169–2173. <https://doi.org/10.1128/AEM.02159-10>.
 46. Gelbičová T, Koláčková I, Pantůček R, Karpíšková R. 2015. A novel mutation leading to a premature stop codon in inlA of *Listeria monocytogenes* isolated from neonatal listeriosis. New Microbiol 38:293–296.
 47. Moura A, Criscuolo A, Pouseele H, Maury MM, Leclercq A, Tarr C, Björkman JT, Dallman T, Reimer A, Enouf V, Larssonneur E, Carleton H, Bracq-Dieye H, Katz LS, Jones L, Touchon M, Tourdjman M, Walker M, Stroika S, Cantinelli T, Chenal-Francois V, Kucerova Z, Rocha EPC, Nadon C, Grant K, Nielsen EM, Pot B, Gerner-Smidt P, Lecuit M, Brisse S. 2017. Whole genome-based population biology and epidemiological surveillance of *Listeria monocytogenes*. Nat Microbiol 2:16185. <https://doi.org/10.1038/nmicrobiol.2016.185>.
 48. Gorski L, Parker CT, Liang AS, Walker S, Romanolo KF. 2016. The majority of genotypes of the virulence gene inlA are intact among natural watershed isolates of *Listeria monocytogenes* from the central California Coast. PLoS One 11:e0167566. <https://doi.org/10.1371/journal.pone.0167566>.
 49. Maury MM, Bracq-Dieye H, Huang L, Vales G, Lavina M, Thouvenot P, Disson O, Leclercq A, Brisse S, Lecuit M. 2019. Hypervirulent *Listeria monocytogenes* clones' adaption to mammalian gut accounts for their association with dairy products. Nat Commun 10:2488. <https://doi.org/10.1038/s41467-019-10380-0>.
 50. Chen Y, Luo Y, Pettengill J, Timme R, Melka D, Doyle M, Jackson A, Parish M, Hammack TS, Allard MW, Brown EW, Strain EA. 2017. Singleton sequence type 382, an emerging clonal group of *Listeria monocytogenes*.

- genes associated with three multistate outbreaks linked to contaminated stone fruit, caramel apples, and leafy green salad. *J Clin Microbiol* 55:931–941. <https://doi.org/10.1128/JCM.02140-16>.
51. Barkley JS, Goscininski M, Miller A. 2016. Whole-genome sequencing detection of ongoing *Listeria* contamination at a restaurant, Rhode Island, USA, 2014. *Emerg Infect Dis* 22:1474–1476. <https://doi.org/10.3201/eid2208.151917>.
 52. Gillesberg Lassen S, Ethelberg S, Björkman JT, Jensen T, Sørensen G, Kvistholm Jensen A, Müller L, Nielsen EM, Mølbak K. 2016. Two listeria outbreaks caused by smoked fish consumption—using whole-genome sequencing for outbreak investigations. *Clin Microbiol Infect* 22: 620–624. <https://doi.org/10.1016/j.cmi.2016.04.017>.
 53. Kvistholm Jensen A, Nielsen EM, Björkman JT, Jensen T, Müller L, Persson S, Bjerager G, Perge A, Krause TG, Kiil K, Sørensen G, Andersen JK, Mølbak K, Ethelberg S. 2016. Whole-genome sequencing used to investigate a nationwide outbreak of listeriosis caused by ready-to-eat delicatessen meat, Denmark, 2014. *Clin Infect Dis* 63:64–70. <https://doi.org/10.1093/cid/ciw192>.
 54. Martín B, Perich A, Gómez D, Yangüela J, Rodríguez A, Garriga M, Aymerich T. 2014. Diversity and distribution of *Listeria monocytogenes* in meat processing plants. *Food Microbiol* 44:119–127. <https://doi.org/10.1016/j.fm.2014.05.014>.
 55. Wang Y, Zhao A, Zhu R, Lan R, Jin D, Cui Z, Wang Y, Li Z, Wang Y, Xu J, Ye C. 2012. Genetic diversity and molecular typing of *Listeria monocytogenes* in China. *BMC Microbiol* 12:119. <https://doi.org/10.1186/1471-2180-12-119>.
 56. Harter E, Wagner EM, Zaiser A, Halecker S, Wagner M, Rychli K. 2017. The novel stress survival islet 2 (SSI-2), predominantly present in *Listeria monocytogenes* strains of ST121, is involved in alkaline and oxidative stress response. *Appl Environ Microbiol* 83:e00827-17. <https://doi.org/10.1128/AEM.00827-17>.
 57. Cherifi T, Carrillo C, Lambert D, Miniäi I, Quessy S, Larivière-Gauthier G, Blais B, Fravallo P. 2018. Genomic characterization of *Listeria monocytogenes* isolates reveals that their persistence in a pig slaughterhouse is linked to the presence of benzalkonium chloride resistance genes. *BMC Microbiol* 18:220. <https://doi.org/10.1186/s12866-018-1363-9>.
 58. Meier AB, Guldemann C, Markkula A, Pöntinen A, Korkeala H, Tasara T. 2017. Comparative phenotypic and genotypic analysis of Swiss and Finnish *Listeria monocytogenes* isolates with respect to benzalkonium chloride resistance. *Front Microbiol* 8:397. <https://doi.org/10.3389/fmicb.2017.00397>.
 59. Mullanpudi S, Siletzky RM, Kathariou S. 2008. Heavy-metal and benzalkonium chloride resistance of *Listeria monocytogenes* isolates from the environment of turkey-processing plants. *Appl Environ Microbiol* 74: 1464–1468. <https://doi.org/10.1128/AEM.02426-07>.
 60. Martínez-Suárez JV, Ortiz S, López-Alonso V. 2016. Potential impact of the resistance to quaternary ammonium disinfectants on the persistence of *Listeria monocytogenes* in food processing environments. *Front Microbiol* 7:638. <https://doi.org/10.3389/fmicb.2016.00638>.
 61. Jacquet C, Doumith M, Gordon JI, Martin PMV, Cossart P, Lecuit M. 2004. A molecular marker for evaluating the pathogenic potential of food-borne *Listeria monocytogenes*. *J Infect Dis* 189:2094–2100. <https://doi.org/10.1086/420853>.
 62. Nightingale KK, Windham K, Martin KE, Yeung M, Wiedmann M. 2005. Select *Listeria monocytogenes* subtypes commonly found in foods carry distinct nonsense mutations in *inlA*, leading to expression of truncated and secreted internalin A, and are associated with a reduced invasion phenotype for human intestinal epithelial cells. *Appl Environ Microbiol* 71:8764–8772. <https://doi.org/10.1128/AEM.71.12.8764-8772.2005>.
 63. Cruz CD, Pitman AR, Harrow SA, Fletcher GC. 2014. *Listeria monocytogenes* associated with New Zealand seafood production and clinical cases: unique sequence types, truncated *InlA*, and attenuated invasiveness. *Appl Environ Microbiol* 80:1489–1497. <https://doi.org/10.1128/AEM.03305-13>.
 64. Clayton EM, Hill C, Cotter PD, Ross RP. 2011. Real-time PCR assay to differentiate listeriolysin S-positive and -negative strains of *Listeria monocytogenes*. *Appl Environ Microbiol* 77:163–171. <https://doi.org/10.1128/AEM.01673-10>.
 65. Grad YH, Fortune SM. 2016. Biodiversity and hypervirulence of *Listeria monocytogenes*. *Nat Genet* 48:229–230. <https://doi.org/10.1038/ng.3515>.
 66. Bertsch D, Muelli M, Weller M, Uruty A, Lacroix C, Meile L. 2014. Antimicrobial susceptibility and antibiotic resistance gene transfer analysis of foodborne, clinical, and environmental *Listeria* spp. isolates including *Listeria monocytogenes*. *MicrobiologyOpen* 3:118–127. <https://doi.org/10.1002/mbo3.155>.
 67. Levraud J-P, Disson O, Kissa K, Bonne I, Cossart P, Herbomel P, Lecuit M. 2009. Real-time observation of *Listeria monocytogenes*-phagocyte interactions in living zebrafish larvae. *Infect Immun* 77:3651–3660. <https://doi.org/10.1128/IAI.00408-09>.
 68. Shan Y, Fang C, Cheng C, Wang Y, Peng J, Fang W. 2015. Immersion infection of germ-free zebrafish with *Listeria monocytogenes* induces transient expression of innate immune response genes. *Front Microbiol* 6:373. <https://doi.org/10.3389/fmicb.2015.00373>.
 69. International Organization for Standardization. 2016. ISO 16140-1:2016. Microbiology of the food chain – Method validation – Part 1: Vocabulary. International Organization for Standardization, Geneva, Switzerland.
 70. Bolger AM, Lohse M, Usadel B. 2014. Trimmomatic: a flexible trimmer for Illumina sequence data. *Bioinformatics (Oxford)* 30:2114–2120. <https://doi.org/10.1093/bioinformatics/btt170>.
 71. Bankevich A, Nurk S, Antipov D, Gurevich AA, Dvorkin M, Kulikov AS, Lesin VM, Nikolenko SI, Pham S, Prjibelski AD, Pyshkin AV, Sirotkin AV, Vyahhi N, Tesler G, Alekseyev MA, Pevzner PA. 2012. SPAdes: a new genome assembly algorithm and its applications to single-cell sequencing. *J Comput Biol* 19:455–477. <https://doi.org/10.1089/cmb.2012.0021>.
 72. Gurevich A, Saveliev V, Vyahhi N, Tesler G. 2013. QUAST: quality assessment tool for genome assemblies. *Bioinformatics (Oxford)* 29: 1072–1075. <https://doi.org/10.1093/bioinformatics/btt086>.
 73. Seemann T. 2014. Prokka: rapid prokaryotic genome annotation. *Bioinformatics (Oxford)* 30:2068–2069. <https://doi.org/10.1093/bioinformatics/btu153>.
 74. Zhou Y, Liang Y, Lynch KH, Dennis JJ, Wishart DS. 2011. PHAST: a fast phage search tool. *Nucleic Acids Res* 39:W347–W352. <https://doi.org/10.1093/nar/gkr485>.
 75. Zankari E, Hasman H, Cosentino S, Vestergaard M, Rasmussen S, Lund O, Aarestrup FM, Larsen MV. 2012. Identification of acquired antimicrobial resistance genes. *J Antimicrob Chemother* 67:2640–2644. <https://doi.org/10.1093/jac/dks261>.
 76. Davis S, Pettengill JB, Luo Y, Payne J, Shpuntoff A, Rand H, Strain E. 2015. CFSAN SNP Pipeline: an automated method for constructing SNP matrices from next-generation sequence data. *PeerJ Comput Sci* 1:e20. <https://doi.org/10.7717/peerj-cs.20>.
 77. Langmead B, Salzberg SL. 2012. Fast gapped-read alignment with Bowtie 2. *Nat Methods* 9:357–359. <https://doi.org/10.1038/nmeth.1923>.
 78. Koboldt DC, Zhang Q, Larson DE, Shen D, McLellan MD, Lin L, Miller CA, Mardis ER, Ding L, Wilson RK. 2012. VarScan 2: somatic mutation and copy number alteration discovery in cancer by exome sequencing. *Genome Res* 22:568–576. <https://doi.org/10.1101/gr.129684.111>.
 79. Price MN, Dehal PS, Arkin AP. 2010. FastTree 2—approximately maximum-likelihood trees for large alignments. *PLoS One* 5:e9490. <https://doi.org/10.1371/journal.pone.0009490>.
 80. Kimmel CB, Ballard WW, Kimmel SR, Ullmann B, Schilling TF. 1995. Stages of embryonic development of the zebrafish. *Dev Dyn* 203:253–310. <https://doi.org/10.1002/aja.1002030302>.