



Comparative genomics and functional analysis of a highly adhesive dairy *Lactobacillus paracasei* subsp. *paracasei* IBB3423 strain

Anna Koryszewska-Bagińska^{1,2} · Jan Gawor¹ · Adriana Nowak³ · Marcin Grynberg¹ · Tamara Aleksandrak-Piekarczyk¹

Received: 5 March 2019 / Revised: 1 July 2019 / Accepted: 4 July 2019
© The Author(s) 2019

Abstract

Various *Lactobacillus paracasei* strains are found in diverse environments, including dairy and plant materials and the intestinal tract of humans and animals, and are also used in the food industry or as probiotics. In this study, we have isolated a new strain *L. paracasei* subsp. *paracasei* IBB3423 from samples of raw cow milk collected in a citizen science project. IBB3423 showed some desired probiotic features such as high adhesion capacity and ability to metabolize inulin. Its complete genome sequence comprising the chromosome of 3,183,386 bp and two plasmids of 5986 bp and 51,211 bp was determined. In silico analysis revealed numerous genes encoding proteins involved in carbohydrate metabolism and of extracellular localization likely supporting interaction with host tissues. In vitro tests confirmed the high adhesion capacity of IBB3423 and showed that it even exceeds that of the highly adhesive *L. rhamnosus* GG. Curing of the larger plasmid indicated that the adhesive properties depend on the plasmid and thus could be determined by its pilus-encoding *spaCBA* genes.

Keywords Lactic acid bacteria · *Lactobacillus paracasei* · Adhesion · *spaCBA* pilus genes cluster

Introduction

Lactobacillus is the largest genus of the lactic acid bacteria (LAB) group, which currently comprises 236 species listed in the List of Prokaryotic Names (October 2018; www.bacterio.net). Members of this genus represent an extremely diverse group of species with various physiological, biochemical, and genetic characteristics and are able to colonize diverse

ecological niches, including the gastrointestinal tract (GIT) of humans and animals, plants, and dairy food environments (Makarova et al. 2006; Kandler 1983). Lactobacilli are rod-shaped, Gram-positive, non-spore-forming, lactic acid-producing, generally nonmotile bacteria that can survive mainly in anaerobic environments (Claesson et al. 2007; Kandler 1983). Due to their advantageous properties and a long history of safe use, lactobacilli are used as starter cultures in both traditional fermentation and various industrial bioprocesses (Stiles and Holzapfel 1997). Furthermore, having the generally recognized as safe (GRAS) status, many species are considered probiotics, i.e., live microorganisms intended to confer health benefits after consumption (Makarova et al. 2006; Fuller 1991; Ouwehand et al. 2002; Lebeer et al. 2008). The probiotic properties of microorganisms are determined by factors that include their adaptation to the GIT and those directly mediating the health effects to the host. The adaptation factors include the ability to survive in the harsh conditions of the GIT (low pH and high concentration of bile salts) and adherence to mucosal surfaces (mucus, extracellular matrix proteins (ECM), or epithelial cells) (Holzapfel et al. 2001; Marco et al. 2006; Lebeer et al. 2008). One of the most desirable traits for probiotic bacteria is good adherence capacity, as it is responsible for successful

Marcin Grynberg, corresponding author only for citizen science matters.

Electronic supplementary material The online version of this article (<https://doi.org/10.1007/s00253-019-10010-1>) contains supplementary material, which is available to authorized users.

✉ Marcin Grynberg
greenb@ibb.waw.pl

✉ Tamara Aleksandrak-Piekarczyk
tamara@ibb.waw.pl

¹ Institute of Biochemistry and Biophysics, Polish Academy of Sciences (IBB PAS), Pawińskiego 5a, 02-106 Warsaw, Poland

² Present address: Department of Medical Biology, Medical University of Warsaw, Litewska 14/16, 00-575 Warsaw, Poland

³ Institute of Fermentation Technology and Microbiology, Lodz University of Technology, Wolczanska 171/173, 90-924 Lodz, Poland

colonization of the mucosal surfaces (Ouweland et al. 2000; Styriak et al. 2003). By adhering to the host gut, the probiotic microbiota provides beneficial effects through various mechanisms ensuring the maintenance of gut barrier function, enhancement of a balanced microbial flora, immunomodulation of gut mucosal defenses, and competitive exclusion of pathogens (Jankowska et al. 2008; Lim 2012). The process of adhesion is initially based on non-specific physical interactions between two surfaces (such as van der Waals forces, repulsive electrostatic double-layer forces, hydrophobic interactions, short-range forces, and ion bridging). Generally, hydrophobic cells adhere strongly to hydrophobic surfaces, and thus the phenomenon of cell surface hydrophobicity (CSH) is responsible for cell aggregation, and, as human body surfaces are mostly of a hydrophobic character, it promotes binding of hydrophobic bacteria to the intestine epithelial tissue (Krasowska and Sigler 2014). After the initial attachment to the epithelium surface, a more specific interplay between bacterial adhesion proteins and mucosal surfaces takes place, including binding to specific receptors (Pérez et al. 1998; Turroni et al. 2013). A large number of diverse factors mediating adhesion to different components of the mucosa have been identified largely owing to genome sequencing of various lactobacilli paired with integrated genomic techniques (Kant et al. 2011; Smokvina et al. 2013). However, in contrast to the often well-characterized adhesive determinants of pathogens and their specific host receptors, functional understanding of the adherence of commensal bacteria is only fragmentary. These bacterial adhesive factors include exopolysaccharides (EPSs), teichoic acids (TAs), surface layer (S-layer) proteins, and some other membrane- or cell wall-associated proteins protruding from the cell (Lebeer et al. 2008). Molecules involved in adhesion can be attached to the cell wall by LPXTG (Leu-Pro-X-Thr-Gly)-type anchor or other peptidoglycan-binding domains such as LysM, WxL, SH3, or PG (Kleerebezem et al. 2010; Visweswaran et al. 2014). Most adhesins of lactobacilli belong to a class of sortase-dependent proteins (Velez et al. 2007), which contain an N-terminal signal sequence for transport through the membrane and a C-terminal motif LPXTG for cell wall anchoring performed by the enzyme sortase (Navarre and Schneewind 1999). In Gram-positive pathogens, the SpaCBA pili employing an LPXTG-like motif are the major driver of adhesion (Mandlik et al. 2008). Similar structures have been also identified in many lactobacilli, for example, *L. rhamnosus* GG and *L. paracasei* LOCK 0919 (Kankainen et al. 2009; Aleksandrzyk-Piekarczyk et al. 2016).

To interact with host receptors, bacterial adhesion proteins contain specific domains, among them are the following: mucin binding (MucBP), collagen binding (CnaB,

collagenBindB, collagen_bind), fibronectin binding (FbpA), leucine-rich repeats (LRR), Ig-like (Big_3, BID_2), legume lectin-like (lectin L-type), and ZnuA (Barr et al. 2013; Dintilhac et al. 1997; Gabbianelli et al. 2011). Of those, the following have been studied in some detail: fibronectin-binding proteins in *Lactobacillus casei* BL23 (Muñoz-Provencio et al. 2010), collagen-binding surface proteins in *L. reuteri* NCIB11951 and *L. acidophilus* NCFM (Aleljung et al. 1994; Buck et al. 2005), mucus-adhesion-promoting protein (MapA) in *L. reuteri* (Miyoshi et al. 2006), and lectin-like mannose-specific adhesin in *L. plantarum* WCFS1 (Pretzer et al. 2005). A key role in adhesion to intestinal cells has also been established for so-called S-layer proteins in a number of lactobacilli such as *L. brevis* (Hynonen et al. 2002), *L. crispatus* (Toba et al. 1995; Antikainen et al. 2002), *L. helveticus* (Johnson-Henry et al. 2007), and *L. acidophilus* (Buck et al. 2005). Some probiotic strains devoid of the S-layer proteins encode an aggregation-promoting factor sharing several features with the S-layer proteins (Turpin et al. 2012). Additionally, cell surface-associated cell wall hydrolases Msp2/p40 and Msp1/p75 of *L. casei* have been shown to bind to mucin, collagen, and cultured epithelial cells (Bäuerl et al. 2010).

Comparative studies of lactobacilli have shown that their health efficacy is not only species-specific, but also varies between strains of a species. This observation justifies the need to characterize *Lactobacillus* strains individually, also at the genome level (Ventura et al. 2009; FAO/WHO 2002). In this context, the *L. casei* taxonomic group comprised of three related species (*L. casei*, *L. paracasei*, and *L. rhamnosus*) (Felis and Dellaglio 2007) is of great interest as numerous commonly utilized probiotic strains belong there (Kalliomäki et al. 2003; Sykora et al. 2005; Klaenhammer et al. 2008; Almeida et al. 2012; Kankainen et al. 2009; Douillard et al. 2013; Smokvina et al. 2013). Despite the groups' importance and apparently comprehensive studies, some species affiliations of their members are turned out to be erroneous, e.g., a strain previously assigned as *L. casei* LOCK 0919 (Koryszewska-Baginska et al. 2013) basing on a re-examination of its genome sequence has now been renamed *L. paracasei* LOCK 0919.

In this study, we isolated a new strain *L. paracasei* subsp. *paracasei* IBB3423 from samples of raw cow milk from northeastern Poland. Functional tests revealed their high adhesion capacity and ability to metabolize inulin. Its DNA was sequenced and predicted to comprise two plasmids in addition to the chromosome. Bioinformatic analyses revealed the presence of a number of genes coding for potential adhesion proteins, including pilus-encoding *spaCBA* genes residing in one of the plasmids. The plasmid's removal deprived the bacteria of their capacity to adhere, indicating that it most likely depends on the SpaCBA pili.

Materials and methods

Isolation of strains, growth conditions, and DNA extraction for genome sequencing

The raw cow milk samples were collected from northeastern Poland and *L. paracasei* subsp. *paracasei* IBB3423 strain was isolated from them by students (Supplementary Information S6) within the citizen science project (“Paths of Copernicus” MakeTogether program). Four other *Lactobacillus* strains (*L. rhamnosus* GG, *L. rhamnosus* LOCK 0900, *L. rhamnosus* LOCK 0908, and *L. paracasei* LOCK 0919) of human origin were obtained from commercial dietary supplements under the brand names of Dicoflor (Bayer, Germany; GG) and Latopic (Biomed, Poland; LOCK 0900, LOCK 0908 and LOCK 0919). Strain IBB3423 was isolated by serial dilution on MRS broth (De Man, Rogosa and Sharpe; Difco) solidified with 1% agar and incubating anaerobically (37 °C, 48 h). Individual colonies were inoculated into liquid MRS and propagated overnight anaerobically at 37 °C. Total DNA was extracted using a Genomic Mini kit (A&A Biotechnology, Poland) according to the manufacturer’s instruction with the following modifications. An overnight culture of *L. paracasei* subsp. *paracasei* IBB3423 in MRS medium was centrifuged (14,000 rpm, 1 min) and the pellet was suspended in TES (0.2 M Tris-HCl pH 8.0, 0.5 mM EDTA, 0.5 M sucrose) with lysozyme (10 mg/ml) and mutanolysin (10 U/ml) and incubated (37 °C, 1 h) with occasional mixing. The suspension was centrifuged (14,000 rpm, 3 min) and the pellet was gently suspended in the supplied buffer. The obtained DNA was characterized and quantified by measuring its OD at 230, 260, and 280 nm. Identification at species level was based on 16S rDNA sequencing following amplification with universal primers 27F (5'-AGAGTTTGATCCTG GCTCAG-3') and 1492R (5'-GGTTACCTTGTTAC GACTT-3') (Lane 1991). The nucleotide sequence of the PCR product was compared with other sequences available using the Basic Local Alignment Search Tool (BLAST; <https://blast.ncbi.nlm.nih.gov/Blast.cgi/>; Altschul et al. 1990) and the ANI (average nucleotide identity) calculator software (<https://www.ezbiocloud.net/tools/ani/>; Yoon et al. 2017), which indicated that IBB3423 belongs to *L. paracasei* subsp. *paracasei* and has the highest similarity to *L. paracasei* subsp. *paracasei* TMW 1.1434.

Aggregation, hydrophobicity, and adherence tests

The tests for aggregation, hydrophobicity, and adherence to abiotic (glass and polystyrene) and biotic (collagen, gelatine, and mucus) surfaces were performed as described previously (Aleksandrak-Piekarczyk et al. 2016). The following criteria were used to classify the adherence properties: $A \geq 3$, strongly

adherent; $3 > A > 2$, moderately adherent; $2 > A > 1$, weakly adherent; $A \leq 1$, non-adherent.

For adherence tests to epithelial tissue, the colorectal carcinoma cell line Caco-2 (Cell Line Service GmbH, Germany) from 42nd passage was cultured in T75 Roux bottles (Greiner Bio-One GmbH, Germany) as described previously (Nowak et al. 2016) in DMEM (Dulbecco’s Modified Eagle’s Medium; Sigma-Aldrich, USA) supplemented with 10% FBS (fetal bovine serum; Thermo Fisher Scientific, USA), 25 mM HEPES (4-(2-hydroxyethyl)-1-piperazineethanesulfonic acid; Sigma-Aldrich, USA), 4 mM GlutaMAX (Thermo Fisher Scientific, USA), a mixture of 100 µg/ml streptomycin, and 100 IU/ml penicillin (Sigma-Aldrich, USA). Cells were incubated (37 °C, 5% CO₂, humidity > 95%) for 7 days to reach confluence and then were detached with Tryple™ Express (Thermo Fisher Scientific, USA) according to manufacturer’s instruction. The cell suspension was centrifuged (200×g, 5 min), the pellet was suspended in fresh DMEM, and the number and viability of cells were determined by trypan blue staining (Sigma-Aldrich, USA). For the adherence assay, Caco-2 cells were placed in a 24-well plate (2.5 × 10⁵ cells/well) and left overnight, while bacteria were cultivated in MRS broth (24 h, 37 °C), centrifuged (9300×g, 10 min), washed with phosphate-buffered saline (PBS), and suspended in DMEM without supplements in the amount of 7–8 × 10⁸ CFU/ml. Medium was aspirated from Caco-2 cells and 1 ml of bacteria in DMEM was added. The plate was incubated (2 h, 37 °C, 5% CO₂, humidity > 95%) and non-adherent bacteria were removed by gentle washing with PBS. Caco-2 cells with adhered bacteria were detached with 200 µl 1% trypsin (Sigma-Aldrich, USA) for 10 min at 37 °C, scraped with a cell scraper (Greiner Bio-One GmbH, Germany), transferred into Eppendorf tubes, and centrifuged (9300×g, 10 min). To lyse the Caco-2 cells, the pellet was resuspended in 1 ml 0.1% Triton X-100 (Sigma-Aldrich, USA) and incubated for 5 min at RT. The released bacteria were counted by plating on MRS agar and incubating for 48 h at 37 °C. The adherence rate was calculated as follows: $A[\%] = (\log A_2 / \log A_1) \times 100$, where A₁ is the number of colony-forming units (CFU) of initial bacteria added to the well and A₂ is the number (CFU) of adhered bacteria.

For microscopic visualization of adhering bacteria, the procedure described above was carried out in an 8-chamber Lab-Tek™ microplate (Thermo Fisher Scientific, USA). After 2 h of incubation, non-adherent bacteria were removed; wells were washed with PBS, fixed with 70% methanol for 15 min, and then stained for 10 min with 0.1% crystal violet. After that, wells were washed with 70% ethanol and dried overnight. Samples were observed at 100× objective under a microscope (Nikon Eclipse Ci H600L, Japan) connected to a Nikon Digital Sight DS-U3 camera using NIS-elements BR 3.0 imaging software (Nikon, Japan).

Data were analyzed using two-way analysis of variance (ANOVA), and differences between values with normal distribution were evaluated by Student's *t* test using OriginPro 6.1 software (OriginLab Corporation, Northampton, USA). The differences were deemed significant at $P < 0.05$. The results are presented as mean \pm standard deviation (SD).

Genome sequencing and bioinformatic analyses

The total DNA of *L. paracasei* subsp. *paracasei* IBB3423 was subjected to whole genome sequencing (WGS) on a MiSeq system (Illumina, San Diego, CA) at the DNA Sequencing and Oligonucleotide Synthesis Laboratory, IBB PAS. DNA was sheared to the appropriate size and used for paired-end TruSeq (Illumina, USA) library construction following the manufacturer's instructions. Additionally, the long-span mate-pair library was constructed from non-sheared DNA using Nextera Mate Pair Kit (Illumina, USA) following manufacturer's instructions. Both libraries were sequenced in the paired-end mode using a v3 (600 cycles) chemistry kit (Illumina, USA). Obtained sequence reads were filtered by the quality and assembled using Newbler v3.0 software (Roche, USA). Gaps remaining in the genome assembly were closed by PCR amplification of DNA fragments followed by Sanger sequencing on an ABI3730xl Genetic Analyzer (Life Technologies, USA) using BigDye Terminator Mix v. 3.1 chemistry (Life Technologies, USA). To obtain complete nucleotide sequence of the genome errors, misassemblies were corrected using the Seqman software (DNASTar, USA). Annotation of open reading frames (*orfs*) and non-coding RNAs was done using the RAST server (<http://rast.nmpdr.org/>; Aziz et al. 2008) and checked by BLAST analysis when needed. RAST and BASYS (<https://www.basys.ca/>; Van Domselaar et al. 2005) software were applied for constructing Clusters of Orthologous Groups (COGs) of predicted proteins. Carbohydrate metabolic pathways were reconstructed using BlastKOALA tool from KEGG (Kyoto Encyclopedia of Genes and Genomes; <https://www.kegg.jp/blastkoala/>; Kanehisa et al. 2016). Carbohydrate-specific enzymes were annotated by the dbCAN prediction web server (<http://csbl.bmb.uga.edu/dbCAN/>; Yin et al. 2012). Transporters were predicted by searching the TCDB database (<http://www.tcdb.org/>; Saier et al. 2016) with the BLASTP program with the Expect value (*E* value) lower than e^{-05} . Possible bacteriophage sequences were searched using PHAST (<http://phast.wishartlab.com/>; Zhou et al. 2011). CRISPR loci were identified using the CRISPRFinder tool (<http://crispr.i2bc.paris-saclay.fr/>; Grissa et al. 2007). Genome visualization was done using CGView server (<http://cgview.ca/>; Grant and Stothard 2008). The similarity of IBB3423 plasmids to other plasmids was evaluated using the standard BLASTN program at the NCBI

site and best hits were used to show sequence similarity using Circoletto with the selected *E* value of 0.1 (<http://tools.baf.infospire.org/circoletto/>; Darzentas 2010). For comparative studies, the following 25 complete genome sequences of *L. casei* group were downloaded from NCBI: *L. paracasei* ATCC 334 (NC_008526.1), *L. paracasei* FAM18149 (NZ_CP017261.1), *L. paracasei* TK1501 (NZ_CP017716.1), *L. paracasei* IIA (NZ_CP014985.1), *L. paracasei* subsp. *paracasei* TMW 1.1434 (NZ_CP016355.1), *L. paracasei* subsp. *paracasei* 8700:2 (NC_022112.1), *L. paracasei* N1115 (NZ_CP007122.1), *L. paracasei* LOCK 0919 (NC_021721.1), *L. paracasei* subsp. *paracasei* JCM 8130 (NZ_AP012541.1), *L. paracasei* CAUH35 (NZ_CP012187.1), *L. paracasei* L9 (NZ_CP012148.1), *L. paracasei* KL1 (NZ_CP013921.1), *L. paracasei* HD1.7 (NZ_CP025582.1), *L. paracasei* EG9 (NZ_CP029546.1), *L. paracasei* Lpc10 (NZ_CP029686.1), *L. paracasei* LC355 (CP029536.1), *L. paracasei* Zhang (NC_014334.1), *L. paracasei* BD-II (NC_017474.1), *L. paracasei* LC2W (NC_017473.1), *L. paracasei* HDS-01 (NZ_CP026097.1), *L. casei* BL23 (NC_010999.1), *L. casei* 12A (NZ_CP006690.1), *L. casei* W56 (NC_018641.1), *L. casei* LC5 (NZ_CP017065.1), and *L. casei* ATCC 393 (NZ_AP012544.1). The average nucleotide identity between IBB3423 and respective *Lactobacillus* genomes was calculated with the ANI calculator software. Comparisons between chromosomes were performed using the LASTZ program with the step length of 20 and seed pattern of 12 of 19 (<https://www.genecious.com/plugins/lastz-plugin/>; Harris 2007).

Data access

The finished genome sequence for *L. paracasei* subsp. *paracasei* IBB3423 comprising the chromosome and two plasmids pLCAKO.1 and pLCAKO.2 has been deposited at the NCBI GenBank database with accession numbers CP022954, CP022955, and CP022956, respectively. The IBB3423 strain has been deposited at the publicly accessible Polish Collection of Microorganisms (PCM), culture no. 3007.

Sugar fermentation pattern

To determine the sugar fermentation profile of *L. paracasei* subsp. *paracasei* IBB3423 and other *Lactobacillus* strains, the API 50CH kit (BioMerieux, France) was used according to the manufacturer's instructions. The fermentation patterns were recorded after 48 h of aerobic incubation at 37 °C. Fermentation of carbohydrate was detected by acid production demonstrated by a change in color of the pH indicator present in the medium.

Plasmid curing

The pLCAKO.2 plasmid was removed from strain IBB3423 by serial passages at a 10^{-3} -fold dilution in MRS broth and culturing for 96 h at 37 °C under anaerobic condition. Appropriate dilutions of selected passages (after 4, 12, 20, 28, 32, 40, and 48 days of cultivation) were plated on MRS agar plates. After 48 h of incubation, visible colonies were randomly selected for further analysis. The absence of pLCAKO.2 plasmid was assessed by PCR with primers pLCAKO_3F (5'-CCTCCTTTAGACGCTGAACG-3'), pLCAKO_3R (5'-GGGCGGTACTTTATGGCAAC-3'), pLCAKO_7F (5'-CGCCTATCAAGTCGAAGGAG-3'), and pLCAKO_7R (5'-TCGAGCATCGCCTGCATACG-3'). A strain devoid of pLCAKO.2 was selected after 48 days of cultivation and named IBB3423 Δ pLCAKO.2.

Results

Sugar fermentation profile and preliminary studies of adhesion to bare PS plates of *L. paracasei* subsp. *paracasei* IBB3423

The ability of *L. paracasei* subsp. *paracasei* IBB3423 to utilize certain carbohydrates was compared with the fermentation profiles of well-characterized *L. casei* group bacteria with fully sequenced genomes as follows: *L. rhamnosus* GG, *L. rhamnosus* LOCK 0900, *L. rhamnosus* LOCK 0908, and *L. paracasei* LOCK 0919 (Kankainen et al. 2009; Aleksandrak-Piekarczyk et al. 2013; Koryszewska-Baginska et al. 2013; Koryszewska-Baginska et al. 2014), originally isolated from the human gastrointestinal tract.

All the strains fermented numerous simple and complex carbohydrates (Fig. 1), but IBB3423 was unique among them being capable of metabolizing inulin, D-adonitol (also called D-ribitol), and L-sorbose but not L-rhamnose, dulcitol, inositol, and L-fucose. The inability to use those sugars is probably related to their low abundance in cow milk.

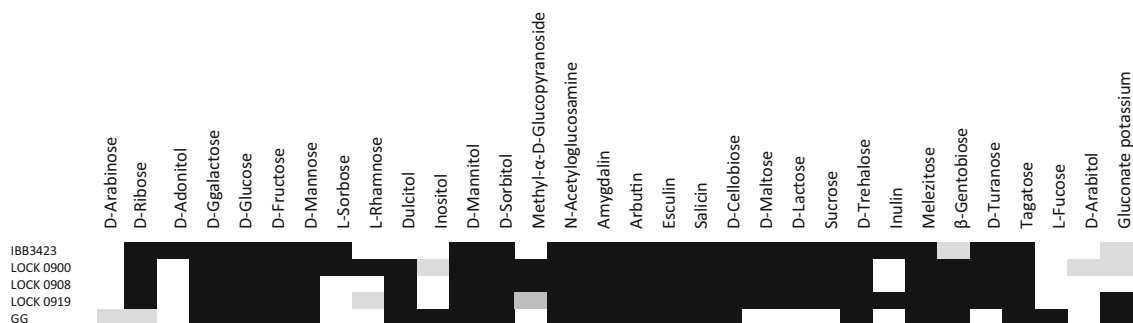


Fig. 1 Fermentative profile of *L. paracasei* subsp. *paracasei* IBB3423. A positive result is indicated by black rectangles, partially by gray and negative by white rectangles. No strain could use glycerol, erythritol, D-xylose, L-xylose, methyl- β -D-xylopyranoside, methyl- α -D-

In addition, *L. rhamnosus* GG and *L. paracasei* LOCK 0919 are strains of a considerable adhesion capacity (Aleksandrak-Piekarczyk et al. 2016; Segers and Lebeer 2014) in contrast to poorly adherent *L. paracasei* LOCK 0900 and *L. rhamnosus* LOCK 0908 (Aleksandrak-Piekarczyk et al. 2013; Koryszewska-Baginska et al. 2014). The properties of adhesion to microtiter PS plates of IBB3423, LOCK 0900, LOCK 0908, LOCK 0919, and GG were compared. *L. rhamnosus* GG isolate and *L. paracasei* LOCK 0919 showed high/moderate-level PS binding, while the *L. paracasei* LOCK 0900 and *L. rhamnosus* LOCK 0908 strains showed virtually no binding under the conditions tested. In comparison with them, *L. paracasei* IBB3423 presented the strongest adhesions ability, even as much as 35% higher than the best adhesive *L. rhamnosus* GG strain (Figure S1).

Characteristics of *L. paracasei* subsp. *paracasei* IBB3423 genome

In order to identify the genetic determinants responsible for the strong adherence of *L. paracasei* subsp. *paracasei* IBB3423 and the wide range of metabolized carbon sources, we sequenced its entire genome. In addition to the circular chromosome of 3,183,386 bp, two circular plasmids designated pLCAKO.1 (5986 bp) and pLCAKO.2 (51,211 bp) were found. The GC content of the chromosome is 46.3% and, respectively, 42.7% and 43.8% for pLCAKO.1 and pLCAKO.2. These values agree well with the GC content in other lactobacilli (Sun et al. 2015); however, local GC content variation in the chromosome and a clear-cut GC skew at the origin of replication is evident (Fig. 2). A total of 3216 genes were identified in the chromosome, of which 3116 were annotated as protein-coding genes, resulting in the coding capacity of 84.5%. As with the GC content, the distribution of genes on the two DNA strands is substantially skewed around *ori* so that their transcription tends to agree with the direction of replicative fork migration. Fifty-nine tRNA genes representing all amino acids were found, and five complete rRNA operons, three on the forward strand, and two on the

mannopyranoside, D-melibiose, D-raffinose, starch, glycogen, D-lyxose, xylitol, D-fucose, L-arabitol, 2-ketogluconate potassium, or 5-ketogluconate potassium

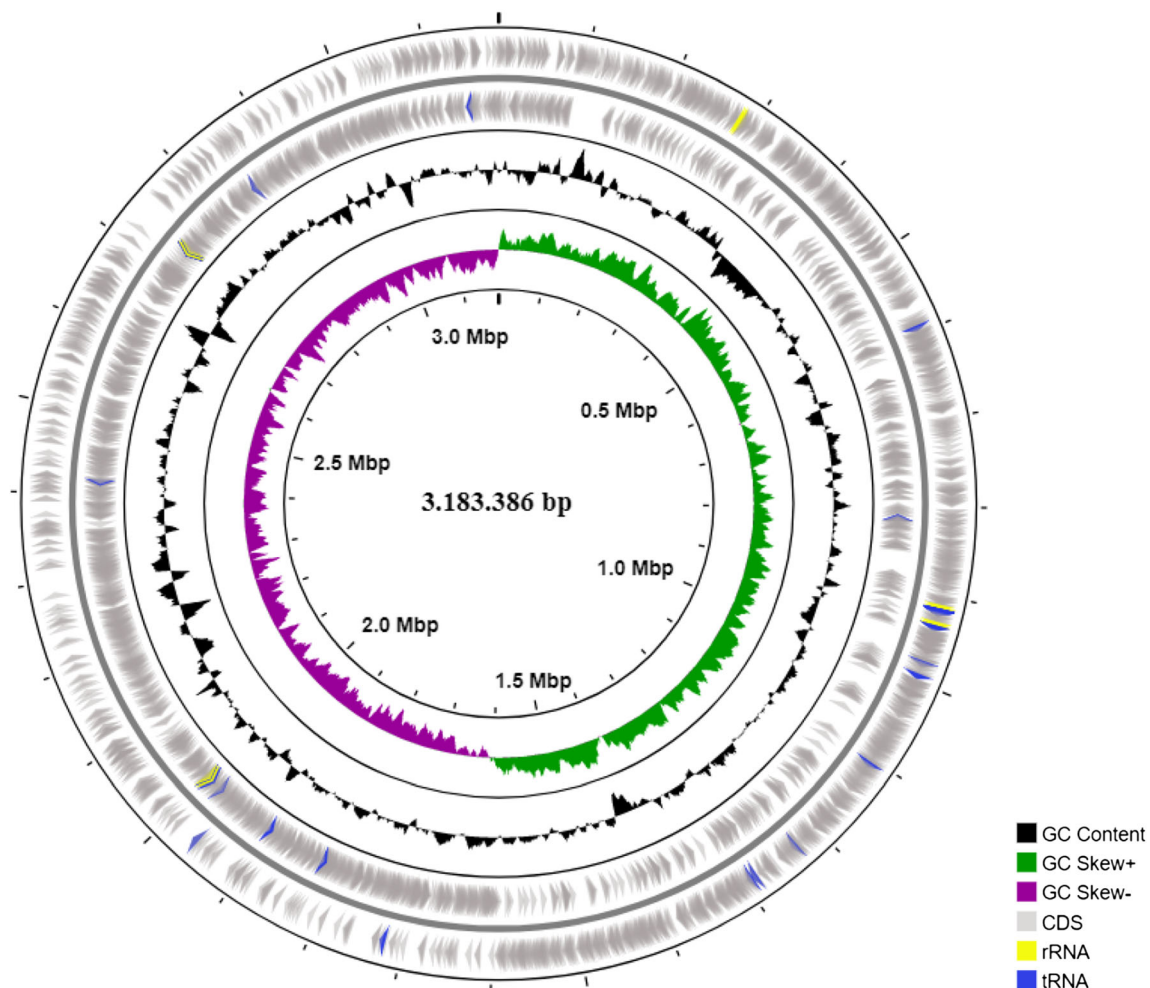


Fig. 2 Circular map of *L. paracasei* subsp. *paracasei* IBB3423 chromosome. The first two outer circles indicate predicted genes on forward and reverse strand. rRNA and tRNA genes are depicted by

yellow and blue arrows. The black circle represents GC content and the green/purple circle shows GC skew

reverse strand. Most of the tRNAs genes are clustered in the close neighborhood of rRNA locus (Fig. 2). All the rRNA operons and nearly all tRNA genes are arranged in the direction of fork migration. Seventy-six genes were identified on pLCAKO.1 and pLCAKO.2 plasmids (Table 1).

A total of 2171 genes from entire genome (~67%) could be assigned a putative biological function, while the remaining ~33% genes were annotated as hypothetical or of unknown function. When their biological roles according to COG categories were analyzed, out of the total of 3189 predicted proteins, 1999 (62.7%) could be assigned to a COG functional category. About 10% of the proteins are involved in cellular processes and signaling (categories D, M, N, O, T, U, V), 16% in information storage and processing (categories J, K, L), almost 26% in metabolism (categories C, E, F, G, H, I, P, and Q), and ca. 11% are poorly characterized (categories R and S) (Supplementary Table S1). Proteins related to carbohydrate and amino acid transport and metabolism are particularly numerous, consistent with the wide fermentation profile

of the strain and the inability of lactobacilli to synthesize most amino acids. Notably, no genes associated with pathogenesis were found, indicating that the IBB3423 strain should be safe to use as a probiotic.

A widespread abundance of prophages in the genomes of *Lactobacillus* spp. has been reported (Mercanti et al. 2016) and IBB3423 was typical in this respect. Four intact prophage regions ranging in length from 24.9 to 41.5 kb partially homologous to prophage sequences widely distributed among other lactobacilli were identified. All of them contain a phage attachment (ATT) site. Judging from the presence of genes involved in bacterial lysis (holin and phage lysin), two of those phages may follow the lysogenic pathway.

Clustered regularly interspaced short palindromic repeats (CRISPRs) are components of the type of bacterial immune system against mobile genetic elements, which are often found adjacent to the *cas* gene cluster encoding Cas protein complex (Haft et al. 2005). Type II-A/Lsa11 CRISPR-*cas* system is present in the IBB3423 genome. The CRISPR locus

Table 1 Characteristics of *L. paracasei* subsp. *paracasei* IBB3423 genome

Chromosome	
Length (bp)	3,183,386
GC content (%)	46.3
Total genes	3216
Coding DNA (%)	85.8
Protein-coding genes	3116
Protein coding capacity (%)	84.5
Genes assigned to COGs	1972
rRNA genes	15
tRNA genes	59
Prophages	3
CRISPR locus	1
Plasmid pLCAKO.1	
Length (bp)	5986
GC content (%)	42.7
Total genes	9
Protein-coding genes	9
Genes assigned to COGs	0
Plasmid pLCAKO.2	
Length (bp)	51,211
GC content (%)	43.8
Total genes	67
Protein-coding genes	64
Genes assigned to COGs	27

contains 26 perfect repeats of a 36-bp-long sequence (5' GCTCTTGAAGTATTGATTTCGACATCTACCTGAGAC) and one imperfect repeat (5'ACTCTTGAAGTATTGATTTCGACATCTACCTGAGAC). Four CRISPR-associated *cas* genes (*LCAKO_2393*, *LCAKO_2394*, *LCAKO_2395*, and *LCAKO_2396*) are present upstream of the DNA repeats.

The sequence assembly of the entire IBB3423 genome clearly indicated the presence of two plasmids: pLCAKO.1 and pLCAKO.2. Their organization is shown in Fig. 3. The smaller pLCAKO.1 plasmid contains nine genes, all transcribed in the clockwise orientation and mostly encoding proteins with unknown or hypothetical functions homologous to proteins from non-lactobacilli (Supplementary Table S2). The product of the *repB* gene harbors a Rep_trans superfamily domain (pfam02486), which is characteristic for rolling circle replicating (RC) plasmids (Balson and Shaw 1990).

The larger pLCAKO.2 harbors 67 putative genes, of which 64 were predicted to code for proteins. Most exhibit homology with genes located on chromosomes or plasmids of other lactobacilli. Putative biological functions could be assigned to 35 proteins. Fifteen transposase/insertion sequences and one gene encoding pin-related site recombinase/DNA invertase are present in pLCAKO.2 (Supplementary Table S2). The abundance of such elements likely reflects the occurrence of

numerous rearrangements during plasmid evolution. The RepA protein encoded by pLCAKO.2 (gene *LCAKO_2p1*) contains RepA_N domain (pfam06970), which is characteristic for class F family pL32-type theta-replication proteins (Tanaka and Ogura 1998). That pLCAKO.2 is a theta-replicating plasmid is additionally indicated by its substantial size (~ 50 kb) as it has been shown that plasmids of this size found in natural isolates of *Lactobacillus* have been shown typically to replicate via the theta mechanism (Wang and Lee 1997). Plasmid replication and stability are closely related, and downstream of *repA* lies *orf67* encoding a protein assigned to the ParA family of ATPases; they are involved in segregational stability preventing plasmid loss during cell division.

Among the genes encoding proteins of known function, pLCAKO.2 harbors genes encoding serine acetyltransferase, cystathionine gamma-lyase, and cystathionine beta-synthase enzymes, which are involved in amino acid metabolism and a lactose-specific PTS operon (*Lac*-PTS) responsible for lactose uptake and fermentation, comprising *lacTEGF* genes (*LCAKO_2p26*–*LCAKO_2p29*), and is absent in the chromosome. No such operon is present in the chromosome. Noteworthy is another operon with known function, the pilus- and sortase-encoding *spaCBA-srtC* gene cluster (*LCAKO_2p51*–*LCAKO_2p54*), which could play an important role in the adhesion to host cells. Its presence prompted us to investigate the dependence of the excellent adherence of IBB3423 on the pLCAKO.2 plasmid.

pLCAKO.1 shows no significant homologies with other plasmids deposited in the GenBank. In contrast, pLCAKO.2 exhibits conservation of almost all its sequence with other plasmids, albeit its gene layout is unique. This unique architecture confirms the earlier suggestion of numerous rearrangements based on the high content of mobile genetic elements in IBB3423. The most similar plasmid is pL11434-1 from *L. paracasei* subsp. *paracasei* TMW 1.1434 along 76% of the pLCAKO.2 length, including mobile elements and genes encoding *Lac*-PTS, serine acetyltransferase, cystathionine lyase, and several hypothetical proteins. Notably, a region homologous to the *spaCBA-srtC* cluster and downstream genes (*orfs51*–*61*) is present in two plasmids only—pLOCK 0919 (Aleksandrak-Piekarczyk et al. 2016) and p1_LC355 (NZ_CP029537.1) (Fig. 4).

Bearing in mind the unusually wide range of carbohydrates assimilated by IBB3423, we searched its genome factors involved in sugar metabolism. As expected, proteins assigned to the carbohydrate transport and metabolism category were many and constituted over 8% of all predicted proteins (Supplementary Table S1). The majority of carbohydrate transporters found in bacteria represents phosphoenolpyruvate (PEP)-dependent phosphotransferase systems (PTSs). Thirty-nine genes encoding PTS permeases from all seven recognized families, with various sugar substrate specificities are

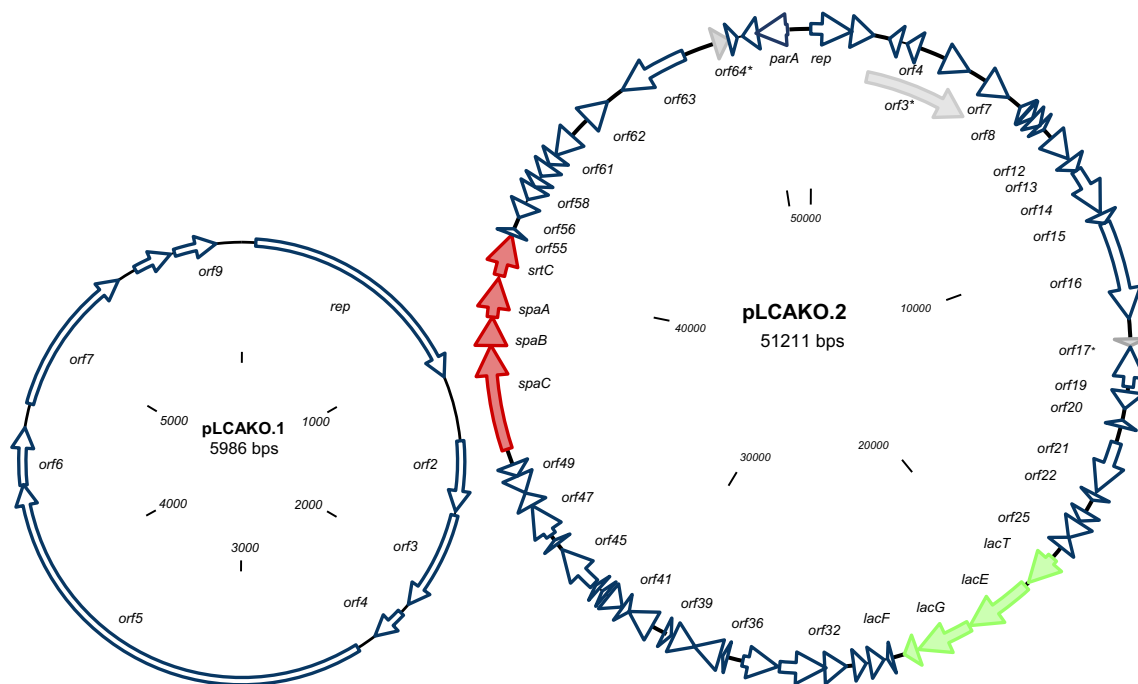


Fig. 3 Circular genetic maps of plasmids pLCAKO.1 and pLCAKO.2 of *L. paracasei* subsp. *paracasei* IBB3423. *orfs* are indicated by arrows showing the direction of transcription. The pilus-encoding *spaCBA-srtC*

cluster is colored in red and lactose operon in green; an asterisk indicates pseudogenes. The two maps are drawn not to scale

present in the IBB3423 genome. In addition, there are several transporters from the ATP-binding cassette (ABC) family and secondary sugar transporters from the major facilitator superfamily (MFS) (Supplementary Table S3). Many of these genes lie close genes encoding a glycosidase and transcriptional regulator, allowing hydrolysis of the incoming sugar and local transcriptional control. More than 40 glycosidases found include among others, 6-phospho- β -glucosidase (six genes), β -glucosidase (one gene), 6-phospho- β -galactosidase (one gene), β -galactosidase (two genes), α -glucosidase (four genes), α -galactosidase (three genes), α -fucosidase (two genes), and neopullulanase (two genes). Notably, the LCAKO_0451 glycosidase with a predicted β -fructosidase specificity contains a canonical LPXTG signal sequence, which suggests its extracytoplasmic localization. We posit that this enzyme could be important due to the strain's ability to utilize the polyfructan inulin. Due to its size, inulin cannot enter the bacterial cell and has to be fragmented by an extracellular activity first to be used as a carbon source. Other genes encoding various carbohydrate-modifying enzymes from several CAZy "carbohydrate-active enzymes" families comprised numerous glycosyltransferases (39 genes), carbohydrate esterases (16 genes), carbohydrate-binding modules (5 genes), and one polysaccharide lyase. Additionally, members of the predicted carbon catabolite regulation network were identified, namely catabolite control protein A (CcpA; LCAKO_0880), phosphoryl transfer enzyme I (EI) (LCAKO_1965), HPr (LCAKO_1964), and HPr kinase/phosphorylase (LCAKO_1110).

The capacity to metabolize complex carbohydrates such as inulin is reflected in the IBB3423 genome. A putative operon involved in inulin degradation homologous to the *fos* cluster from other *L. paracasei* strains was identified (Goh et al. 2006). The *fosRABCDXE* operon of IBB3423 comprises genes encoding a transcriptional regulator FosR (LCAKO_0445), components of a putative fructose/mannose-specific PTS (LCAKO_0446–LCAKO_0450), and a β -fructosidase precursor FosE (LCAKO_0451). An intact glycogen metabolic pathway encoded by the *glgBCDAP-amyB* genes (LCAKO_2211 to LCAKO_2216) organized identically to the corresponding operons of other *Lactobacillus* species (Goh and Klaenhammer 2014) was identified in IBB3423.

In addition to the above, 15 common carbohydrate utilization pathways were predicted in the IBB3423 genome including glycolysis/gluconeogenesis, the citrate cycle, the pentose phosphate pathway, fructose, mannose, galactose, ascorbate, glucuronate, aldarate, sucrose, amino sugars and nucleotide sugars, pyruvate, glyoxylate and dicarboxylate, propanoate, butanoate metabolism, C5-branched dibasic acids, and inositol phosphates. In addition to the gene complement for glycolysis, six lactate dehydrogenase genes (both D- and L-) for the conversion of pyruvate into D- and L-lactate were identified.

The *L. paracasei* subsp. *paracasei* IBB3423 genome also contains a number of genes potentially involved in the biosynthesis of exopolysaccharides (Schmid et al. 2015) such as two of 28 kb gene clusters (LCAKO_2172 to LCAKO_2293) and 20 kb (LCAKO_2225 to LCAKO_2244).

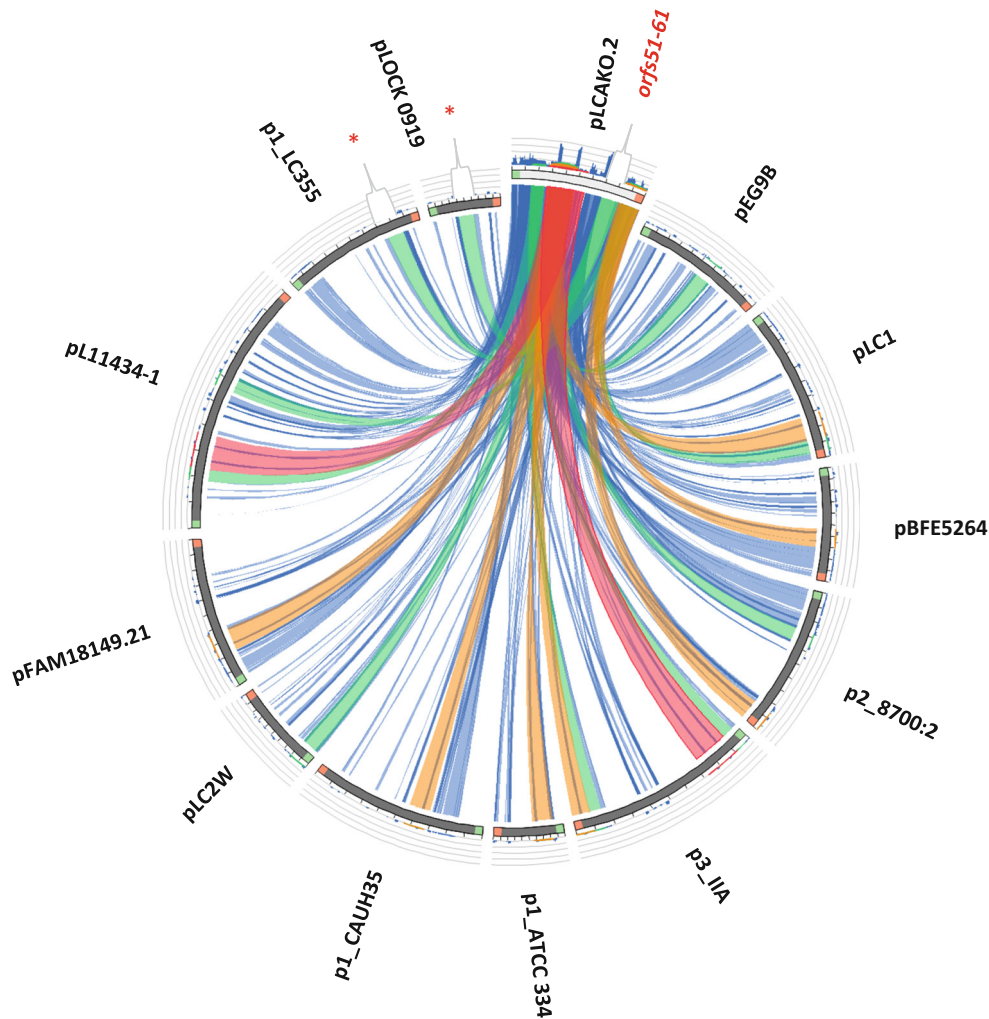


Fig. 4 Sequence similarity between pLCAKO.2 plasmid and other lactobacilli plasmids. Plasmid sequences are placed at the circumference. Ribbons represent local alignments produced by BLAST, their width shows alignment length, and colors blue, green, orange, and red correspond to the alignment bit scores in the four quartiles, from the lowest (bit score below 25%) to the highest (bit score between 75 and 100%). Twisted ribbons connect sequences in opposite orientations (inverted). An asterisk indicates region homologous to the *spaCBA-srtC* cluster and downstream genes (*orfs51–61*) from the pLCAKO.2 plasmid. The following plasmid sequences were compared: pL11434-1 GenBank accession no. NZ_

CP016356.1 from *L. paracasei* subsp. *paracasei* strain TMW 1.1434; pFAM18149.21 NZ_CP017262.1 from *L. paracasei* FAM18149; p3_IIA NZ_CP014988.1 from *L. paracasei*; p1_ATCC 334 NC_008502.1 from *L. paracasei* ATCC 334; p1_CAUH35 NZ_CP012188.1 from *L. paracasei* CAUH35; p2_8700:2 NC_022123.1 from *L. paracasei* subsp. *paracasei* 8700:2; p1_LC355 NZ_CP029537.1 from *L. paracasei* LC355; pEG9B NZ_CP029548.1 from *L. paracasei* EG9; pLOCK 0919 NC_021722.1 from *L. paracasei* LOCK 0919; pLC2W NC_017475.1 from *L. paracasei* LC2W; pLC1 NC_013200.1 from *L. rhamnosus* Lc 705; pBFES264 NZ_CP014202.1 from *L. rhamnosus* BFES264

Adhesion properties of strain IBB3423

To determine the adhesive properties of IBB3423, we performed a series of assays using *L. rhamnosus* GG and *L. paracasei* LOCK 0919 as positive references (Aleksandrzyk-Piekarczyk et al. 2016; Segers and Lebeer 2014) and *L. rhamnosus* LOCK 0908 as negative reference (Koryszewska-Baginska et al. 2014). To verify the role of the *spaCBA-srtC* gene cluster in adhesion, the IBB3423 strain was cured of the pLCAKO.2 plasmid and the adhesion properties of the resulting *L. paracasei* subsp. *paracasei* IBB3423

Δ pLCAKO.2 strain were compared with those of the parental IBB3423 and other control strains.

The hydrophobicity of the five strains tested varied significantly. IBB3423 showed the highest value ($17.4\% \pm 6.8\%$), while the same strain after removing SpaCBA pili-encoding plasmid (*L. paracasei* subsp. *paracasei* IBB3423 Δ pLCAKO.2) was almost non-hydrophobic ($0.1\% \pm 0.02\%$) (Table 2) ($P < 0.05$). The hydrophobicity of GG and LOCK 0908 was similar (3–4%) but significantly lower than that of IBB3423 while, rather unexpectedly, strain 0919 was at least hydrophobic (ca. 1.5%) (Table 2). In contrast, the

Table 2 Hydrophobicity and aggregation ability of *Lactobacillus* spp. strains. Data are means from six repeats in two independent experiments (\pm SD). Results significantly different from **L. paracasei* subsp. *paracasei* IBB3423 and ***L. rhamnosus* LOCK 0908 (ANOVA, $P < 0.05$)

Bacterial strain	Hydrophobicity (%)	Aggregation (%)
<i>L. paracasei</i> subsp. <i>paracasei</i> IBB3423	17.4 \pm 6.8	83.7 \pm 12.7**
<i>L. paracasei</i> subsp. <i>paracasei</i> IBB3423 Δ pLCAKO.2	0.1 \pm 0.02*	81.9 \pm 12.6**
<i>L. rhamnosus</i> GG	3.9 \pm 3.2*	84.2 \pm 6.4**
<i>L. paracasei</i> LOCK 0919	1.5 \pm 0.7*	84.8 \pm 9.2**
<i>L. rhamnosus</i> LOCK 0908	3.3 \pm 1.4*	65.9 \pm 5.1

aggregation percentage after 24 h for all the strains except *L. rhamnosus* LOCK 0908, which was the least aggregative, was comparable (more than 80%) (Table 2).

Also the adherence of the bacteria tested to biotic and abiotic surfaces varied, and again, IBB3423 demonstrated the highest adherence ability to all surfaces ($P < 0.05$; Fig. 5). It adhered strongly to glass and gelatine and was medium adhesive to polystyrene, collagen, and mucus. The same strain (IBB3423 Δ pLCAKO.2) after removing its plasmid was significantly less adhesive demonstrating weak adhesion to all surfaces and non-adherence to gelatine. LOCK 0919 and GG showed strong, medium, or weak adhesive properties, depending on the surface, but always adhered better than the negative reference LOCK 0908 (Fig. 5).

To extend those characteristics to an in vivo situation more relevant to the bacteria–host interactions, we used epithelial Caco-2 cells as a model. *L. paracasei* subsp. *paracasei* IBB3423 adhered strongly to Caco-2 cells with an adherence rate of 97.5% \pm 1.3%; LOCK 0919 and GG showed a similar lower rate, while *L. rhamnosus* LOCK 0908 displayed much weaker adherence (76.9% \pm 10.9%) as shown in Fig. 6, which confirmed the earlier data (Aleksandrak-Piekarczyk et al. 2016). Also, the elimination of pLCAKO.2 diminished

adhesiveness to Caco-2 cells (adherence rate 92.5% \pm 1.8%). The high standard deviation for that strain can be explained by the production and excretion of an amorphous, loose, slime-like substance strongly affecting the cell surface characteristics and probably disturbing its adherence (Nowak et al. 2016). Examples of microscopic pictures of adherence of *Lactobacillus* spp. strains to Caco-2 monolayer, confirming stronger adhesive properties of *L. paracasei* subsp. *paracasei* IBB3423 to Caco-2 cells than *L. paracasei* subsp. *paracasei* IBB3423 Δ pLCAKO.2, are presented in Fig. 7.

Genetic determinants of the adhesion capacity of IBB3423 strain

Cell surface proteins play a critical role in the molecular interactions between bacteria and their host. To understand the reasons for the high adhesive abilities of IBB3423, we searched its genome for factors that could be involved in adhesion to mucus, ECM, or epithelial cells. We identified 54 proteins encoded in the chromosome and five in the pLCAKO.2 plasmid potentially involved in specific adherence mechanisms (Supplementary Table S4), including 22 LPXTG-containing proteins, among which 20 also had a

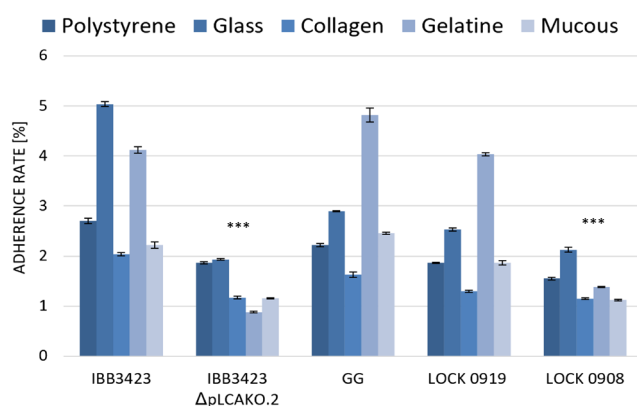
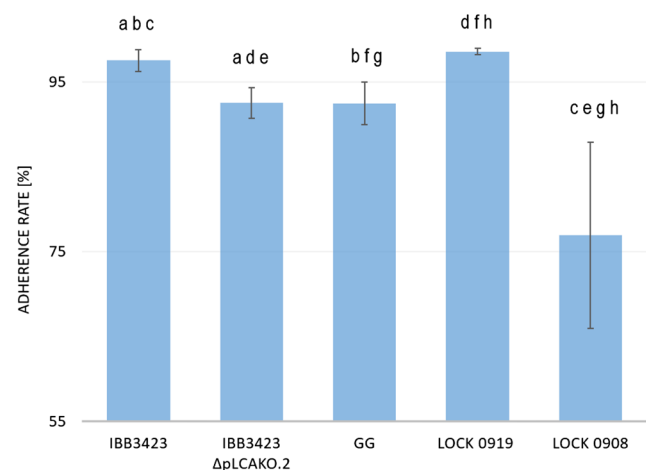
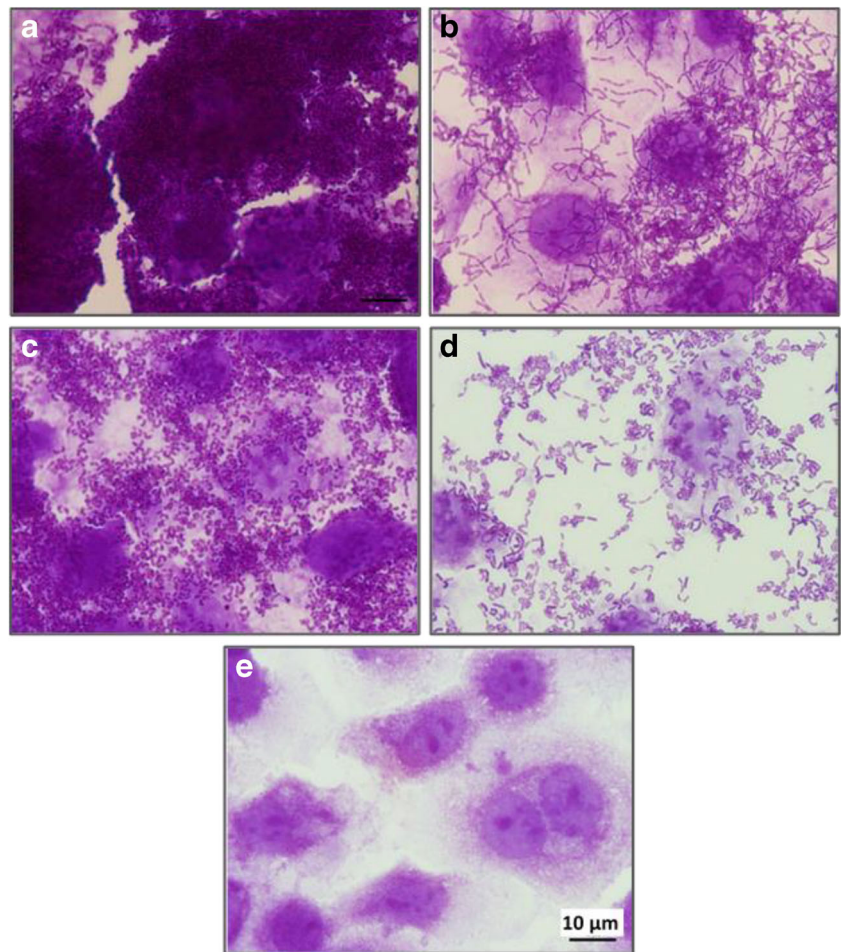
**Fig. 5** Adherence of *Lactobacillus* strains to abiotic and biotic surfaces. Data represent means from three to eight repeats (\pm SD). ***Results are significantly different from *L. paracasei* subsp. *paracasei* IBB3423 (ANOVA, $P < 0.05$)**Fig. 6** Adherence of *Lactobacillus* strains to Caco-2 cells. Data represent means from three repeats (\pm SD). ^{a–h}Results statistically different (ANOVA, $P < 0.05$).

Fig. 7 Adherence of various *Lactobacillus* strains to Caco-2 cells. **a** *L. paracasei* subsp. *paracasei* IBB3423, **b** *L. paracasei* subsp. *paracasei* IBB3423 Δ pLCAKO.2, **c** *L. paracasei* LOCK 0919, **d** *L. rhamnosus* LOCK 0908, and **e** Caco-2 cells (control). Representative microphotographs after staining with 0.1% crystal violet are shown



signal sequence for secretion. Among the LPXTG-containing proteins were pilin proteins SpaCBA (chromosomally encoded LCAKO_0529, LCAKO_0530 and LCAKO_0531, and plasmidically encoded pLCAKO.2_51, pLCAKO.2_52, and pLCAKO.2_53) and SpaDEF (LCAKO_2550, LCAKO_2551, and LCAKO_2552), all associated with a dedicated sortase. The SpaCBA proteins encoded by pLCAKO.2 plasmid shared 94%, 88%, and 95% amino acid identity, respectively, with their chromosomally located counterparts. We also detected eight proteins with diverse of collagen-binding domains such as Cna_B, collagenBindB, and collagen_bind and identified six proteins with one or three putative mucin-binding domains (MucBP). Other potential mucin-interacting proteins (LCAKO_0451, LCAKO_0596, and LCAKO_0985) contain BID_2 and Big_3 Ig-like domains. Furthermore, LCAKO_2606, LCAKO_2612, and LCAKO_2619 contain ECM-adhesive ZnuA domains, and LCAKO_1644, a fibronectin-binding protein A domain (FbpA).

We also identified a large surface-associated LCAKO_0110 protein of 3254 amino acids, with repeats of serine, alanine, and aspartic acid (Supplementary Table S4) encoded in a region carrying three glycosyltransferase genes.

It has been suggested that glycosyltransferase carry out *O*-linked glycosylation of cell surface proteins on serine residues, thus creating a mucin-like structure (Tettelin 2001).

Comparative genome analysis of *L. paracasei* subsp. *paracasei* IBB3423

To further characterize IBB3423, we compared its genome with publicly available genomes of *L. casei/paracasei* strains. Complete genomes of five *L. casei* and 20 *L. paracasei* strains were found in the GenBank database, ranging in size between 2.9 and 3.2 Mbp, with a GC content of 46.2–47.9%, and predicted to encode 2600–3300 proteins (Supplementary Table S5). The *L. paracasei* subsp. *paracasei* IBB3423 genome falls within these values and shows > 98% identity with most of these species. The lowest degree of identity (< 80%) was with of *L. casei* LC5 and *L. casei* subsp. *casei* ATCC 393, while the highest (99.7%) with *L. paracasei* subsp. *paracasei* TMW 1.1434.

A detailed analysis revealed several local differences separating IBB3423 from all the other strains investigated. Thus, the genomes of four *L. paracasei* strains (IIA, KL1, N115, and Lpc10) contained inversions of the long, respective part of the

IBB3423 chromosome (Fig. 8). In turn, IBB3423 differed from other strains in gene order in three separate regions (Fig. 8). Another unique feature of IBB3423 is the presence of multiple phage genes scattered across the genome. Several genes of IBB3423 are absent from the genomes from the *L. casei* group; they encode a cell surface protein containing the KxYKxGKxW signal peptide and MucBP and legumelectin domains (*LCAKO_0636*), a transcription regulator (*LCAKO_0637*), an ATP-dependent endonuclease (*LCAKO_1429*), an AlwI family type II restriction endonuclease (*LCAKO_1430*), a methyl-directed repair DNA adenine methylase (*LCAKO_1431*), the bipolar DNA helicase HerA (*LCAKO_2128*), and a hypothetical protein (*LCAKO_2129*). Other IBB3423 genes are even not found in any other *Lactobacillus* spp., such as *LCAKO_2843* and *LCAKO_2938*, *LCAKO_3065* encoding hypothetical proteins, and *LCAKO_3181* encoding an FRG domain-containing protein.

Discussion

Lactobacillus casei/paracasei strains can be found in various environments and this wide range explains the broad spectrum of their applications in dairy production, biotechnological, and health-related fields (Widyastuti and Rohmatussolihat 2014;

Cai et al. 2009; Toh et al. 2013; Douillard et al. 2013; Smokvina et al. 2013). Owing to this potential, they are among the best-explored lactobacilli and new strains from the *L. casei* taxonomic group with novel functional properties are of great interest to both basic science and the biotech industry. In the present study, we isolated from raw cow milk and characterized a novel strain of attractive properties and named it IBB3423. It was recognized as *L. paracasei* based on its 16S rDNA partial sequence (Lane 1991) following current taxonomic guidelines (Judicial Commission of the International Committee on Systematics of Bacteria 2008). Whole genome sequencing confirmed the species identity and indicated the subspecies as *paracasei*. The strain showed desirable characteristics as a potential probiotic strain mainly due to its high adhesion capacity. Naturally, before this strain can get the probiotic status, there is a need to perform other proper tests confirming its probiotic properties and ability to survive in harsh conditions in the digestive tract of animals. According to the FAO/WHO guidelines (FAO/WHO 2002), these tests should include in vitro assays of, e.g., resistance to bile salts and gastric acidity, antimicrobial activity against pathogenic bacteria, the presence of transferable antibiotic resistance genes, and assessment of safety. It is also recommended to validate in vivo probiotic properties of the bacterial strain and to substantiate of health effects in the target host (FAO/WHO 2002).

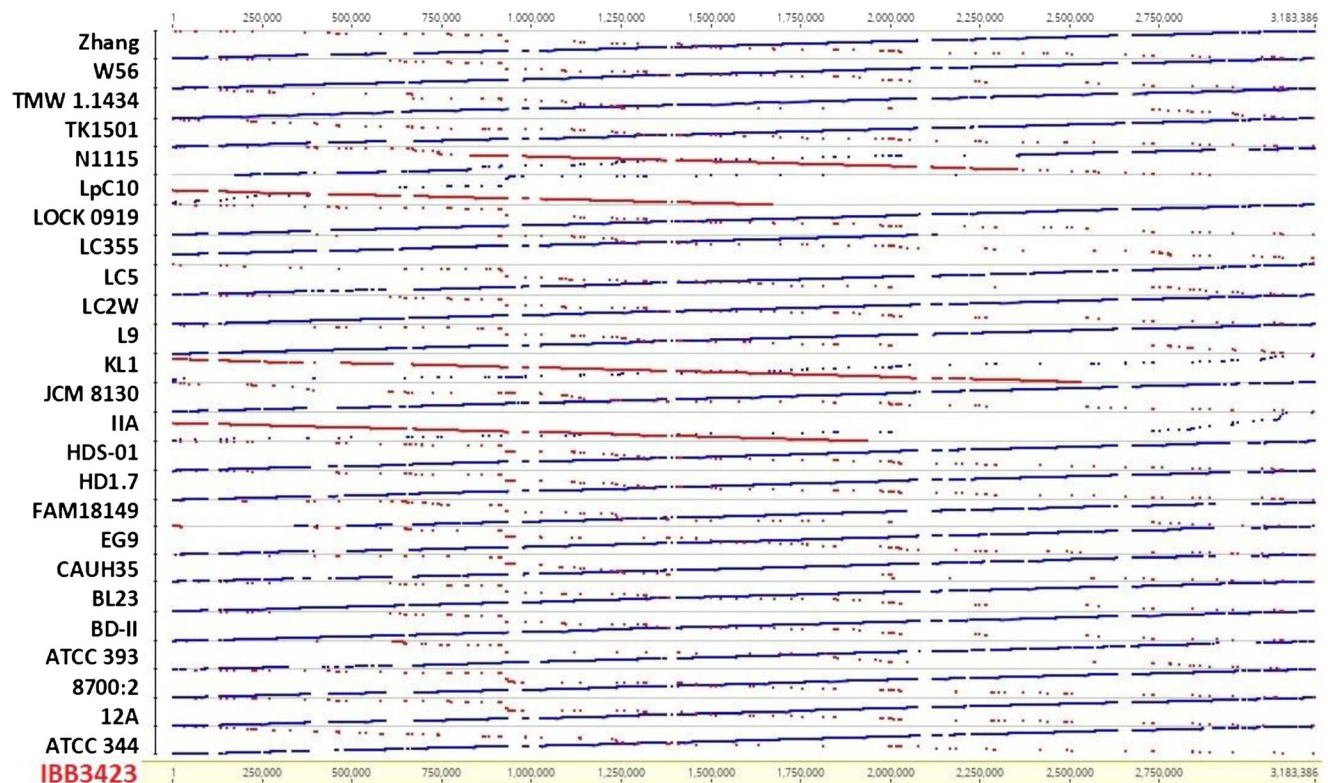


Fig. 8 Comparison of chromosome sequence organization between IBB3423 and other completely sequenced *L. casei/L. paracasei*. Similar regions in the same and inverted arrangement are shown in blue and red, respectively

To date, genomic sequences of 132 *L. casei* and *L. paracasei* strains are publicly available, 25 of which are complete (<http://www.ncbi.nlm.nih.gov>, last accessed in October 2018). The IBB3423 strain shows genomic features, not unlike those of other *L. casei/paracasei* strains as concerns the GC content (46.3%) and genome size. Notably, its chromosome of ca. 3 Mbp is the second largest among *L. casei/paracasei*. Also, the presence of two plasmids and their size (5986 bp and 51,211 bp) are typical for this group of bacteria. Previous studies have reported that strains of *L. paracasei* harbor up to four (Desmond et al. 2005) or perhaps even six plasmids (Smokvina et al. 2013) of different sizes. However, a recently published article claimed that the *L. paracasei* DPC2071 strain may harbor up to eleven plasmids (Stefanovic and McAuliffe 2018). These mobile replicons often carry genes conferring competitive advantage for the bacterium or critical for the industrial application such as those encoding production of bacteriocins, resistance to antibiotics, heavy metals, and phages or enabling utilization of lactose (Wang and Lee 1997). However, among the plasmid-borne genes of *L. paracasei*, only some have a known function (Smokvina et al. 2013). Also in the present study, many of the predicted proteins encoded by pLCAKO.1 and pLCAKO.2 plasmids were annotated as hypothetical (90% and 45%, respectively). Among those of known function are the pLCAKO.2 genes for lactose metabolism and pilus formation, both features relevant to the possible application of IBB3423. Interestingly, in contrast to pLCAKO.2, the smaller pLCAKO.1 plasmid encodes mainly proteins whose homologs are only found in other genera, such as *Staphylococcus*, *Pseudomonas*, *Enterococcus*, and *Streptococcus*, indicating its possible horizontal transfer from distantly related bacteria.

The genomic relatedness between IBB3423 and other *L. casei/paracasei* strains is the strongest (99.7% identity) with the commercial strain *L. paracasei* subsp. *paracasei* TMW 1.1434. This strain is isogenic with *L. paracasei* subsp. *paracasei* F19 (Schott et al. 2016), a known probiotic strain able to bind gastric human and bovine mucin, collagens I and III, and fibronectin (Di Cerbo and Palmieri 2013). However, an alignment of the two genome sequences (Fig. 8) shows some unique regions in IBB3423. They contain mainly genes for phage-related proteins and hypothetical proteins, but also some of the known predicted functions such as cystathionine gamma-lyase, ABC-type amino acid transporter, type I restriction-modification system subunit R and M, or subunit M of type III R/M system. The overall high identity between IBB3423 and TMW 1.1434 explains to some extent their similar high adhesiveness, although they are of different origins: dairy and gastrointestinal, respectively. One should bear in mind, however, that the isolation source of a strain needs not to be the same as the original niche

in which it has evolved, as strains can change habitats due to their adaptability (Ceapa et al. 2015).

The ability to utilize carbohydrates requires the presence of specific transporters for sugar uptake and functional metabolic pathways for its catabolism. In *L. paracasei* subsp. *paracasei* IBB3423, proteins from the functional category of carbohydrate transport and metabolism are the most abundant. This strain encodes enzymes of the Embden–Meyerhof–Parnas (EMP) and phosphoketolase pathways for homolactic and heterolactic lactic acid production from hexoses (Kandler 1983), as well as oxidative and non-oxidative branches of the pentose phosphate pathway (PP) (Tanaka et al. 2002) for utilization of pentoses. However, the non-oxidative PP pathway seems to lack a transaldolase-encoding gene. Regarding the conversion of pyruvate to lactate, at least six D- and L-lactate dehydrogenases are encoded in the IBB3423 genome. The complete Leloir pathway responsible for galactose utilization is also present. In bacteria, carbohydrate uptake is mediated by different classes of transporters, including ABC transporters, secondary transporters (permeases), and PTS transporters (Saier 2000). The PTS, involved in the uptake of mono- and oligosaccharides, is the primary sugar transport system in many lactobacilli (Lorca et al. 2007), but ABC transporters are also important for the transport of oligosaccharides (Monedero et al. 2007). The IBB3423 strain harbors a vast assortment of transporters—at least 39 PTS permeases, several ABC transporter family permeases, and other sugar transporters from the MFS superfamily. Besides these transporters for carbohydrate uptake, the IBB3423 genome encodes numerous carbohydrate-modifying enzymes, which reflects the strain's sugar fermentation versatility including its unique ability to metabolize inulin, D-adonitol, and L-sorbose. Indeed, all the genes required for sorbose utilization, i.e., those encoding L-sorbose-phosphate-reductase and its transcriptional regulator, sorbitol-6-phosphate dehydrogenase, four components of a sorbose-specific PTS, and fructose-bisphosphate aldolase (Yebra et al. 2000) are present in the IBB3423 genome. Eleven genes for D-adonitol metabolism (*LCAKO_2999* to *LCAKO_3009*) encode components of a mannose-type PTS, a transcriptional regulator, and six other enzymes (Bourand et al. 2013). Also, the *fos* operon involved in utilization of fructo-oligosaccharides (FOS), such as inulin, and the transport of free fructose (Goh et al. 2006) was identified in the IBB3423 genome. As inulin, one of the most studied prebiotics, is known to aid the development of desirable gastrointestinal microflora (Kolida et al. 2002), the ability to metabolize it is a very important property of probiotic bacteria. Among the bacteria that do metabolize prebiotic oligosaccharides are some strains of *Lactobacillus* and *Bifidobacterium* spp., and numerous in vitro and in vivo studies have shown that their growth is stimulated by FOS or other oligosaccharides. On the other hand, comparing with the control strains used by us, isolated from the human

gastrointestinal tract, IBB3423 does not have the ability to ferment L-rhamnose, dulcitol, inositol, and L-fucose, probably due to their low abundance in cow milk. Interestingly, an in silico analysis has identified a complete *myo*-inositol (MI) utilization operon identical to that of the probiotic *L. casei* BL23 strain (Yebra et al. 2007), but it appears to be non-functional. Inositol, a sugar alcohol found, among other sources, in soil, is used for phosphate storage in plants, but is rarely used as an energy source by LAB (Yebra et al. 2007). So far, only some strains of *L. casei* have been found to metabolize MI with poor efficiency. One should note that even the presence of genes encoding enzymes for MI metabolism may not be sufficient to confer an ability to utilize MI (Zhang et al. 2010; Vinay-Lara et al. 2014). Moreover, we identified *glgBCDAP-amyB* genes connected with glycogen metabolism (*LCAKO_2211* to *LCAKO_2216*) organized identically to operons of other *Lactobacillus* species (Goh and Klaenhammer 2014). It remains to be determined why IBB3423 cannot utilize glycogen despite having the relevant genes. Several reasons could be at play, including a lack of expression of these genes or their mutation.

Adherence to the intestinal surface is considered one of the most significant features of probiotic bacteria, as it facilitates colonization of the host and thus persistent protection against pathogens (Jankowska et al. 2008; Lim 2012). Bacteria of the genus *Lactobacillus* are able to adhere to various surfaces, but this feature is highly variable due to the variable presence of genes involved in adhesion. The adherence of *L. paracasei* subsp. *paracasei* IBB3423 to most surfaces is even higher than that of the best adhesive *L. rhamnosus* GG strain. Such high adhesiveness of a dairy strain is unexpected, as strains deriving from milk environments typically display weaker adhesion efficiency than those isolated from intestines/feces (Douillard et al. 2013). The very high adhesive capacity of IBB3423 appears to reflect the presence of as many as 59 genes encoding proteins containing putative adhesion domains, among them are SpaCBA and SpaDEF pilins encoded by chromosomal operons *spaCBA* and *spaDEF* and additional *spaCBA* operon on the pLCAKO.2 plasmid. All these operons had the same gene order and were associated with a gene for a pilin-specific sortase. To date, the SpaCBA proteins have been found mainly in the *L. casei* taxonomic group and much less frequently in other lactobacilli (Aleksandrak-Piekarczyk et al. 2016). However, despite possessing complete pili operons, some *L. casei* strains do not form pili due to variations in the *spaCBA* sequence (Toh et al. 2013) or its transcriptional incompetence caused by a lack of functional – 35 and – 10 sequences (Aleksandrak-Piekarczyk et al. 2016). In contrast to *L. casei*, in *L. rhamnosus* GG, the orthologous pili gene cluster is expressed and confers strong mucus-binding ability (Kankainen et al. 2009; Reunanen et al. 2012). Also the plasmidic *spaCBA* from *L. paracasei* LOCK 0919 seems to be functional and responsible for the strong adhesiveness of

this strain (Aleksandrak-Piekarczyk et al. 2016). It is postulated that insertion of an IS element in the *spaC* promoter region in both *L. rhamnosus* GG and *L. paracasei* LOCK 0919 allows the expression of the pili genes (Douillard et al. 2013; Aleksandrak-Piekarczyk et al. 2016). Notably, the upstream region of the IBB3423 *spaCBA* operon harbored by pLCAKO.2 also contains an insertion element indicating that it likely is functional. Indeed, the removal of pLCAKO.2 led to a marked decrease of IBB3423 hydrophobicity and adhesiveness to biotic and abiotic surfaces. The presence of such a plasmid should therefore facilitate colonization and ensure longer persistence in the host's gut thereby conferring a competitive advantage over other bacteria. It can also increase the range of inhabited environments. Plasmidic localization of the *spaCBA* operon, such as in IBB3423, is extremely rare albeit not unique since among all the plasmids deposited at GenBank only two, pLOCK 0919 from *L. paracasei* LOCK 0919 (Koryszewska-Baginska et al. 2013; Aleksandrak-Piekarczyk et al. 2016) and p1_LC355 from *L. paracasei* LC355 (NZ_CP029537.1), harbor the same pilus gene cluster.

In conclusion, the newly identified dairy strain *L. paracasei* subsp. *paracasei* IBB3423 presents genomic and functional features making it a very promising candidate probiotic. Owing to its high adhesiveness comparable to that of the benchmark strain *L. rhamnosus* GG and the ability to use a wide range of saccharides including inulin, it should be able to compete with other commercially applied strains. However, additional functional studies in vitro and in vivo should be performed to determine whether IBB3423 can persist in the gastrointestinal tract and exhibits health-promoting action. Last but not least, the isolation of this novel bacterial strain of such interesting characteristics is proof of the productiveness of citizen science.

Funding This study was funded by grant no. 2018/29/B/NZ9/02278 from the National Science Centre and MakeTogether program founded by the Ministry of Science and Higher Education “Paths of Copernicus” (Supplementary Information S6).

Compliance with ethical standards

Conflict of Interest The authors declare that they have no conflict of interest.

Ethical approval This article does not contain any studies with human participants or animals performed by any of the authors.

Open Access This article is distributed under the terms of the Creative Commons Attribution 4.0 International License (<http://creativecommons.org/licenses/by/4.0/>), which permits unrestricted use, distribution, and reproduction in any medium, provided you give appropriate credit to the original author(s) and the source, provide a link to the Creative Commons license, and indicate if changes were made.

References

- Aleksandrak-Piekarczyk T, Koryszewska-Baginska A, Bardowski J (2013) Genome sequence of the probiotic strain *Lactobacillus rhamnosus* (formerly *Lactobacillus casei*) LOCK900. *Genome Announc* 1:e00640–e00613. <https://doi.org/10.1128/genomeA.00640-13>
- Aleksandrak-Piekarczyk T, Koryszewska-Bagińska A, Grynberg M, Nowak A, Cukrowska B, Kozakova H, Bardowski J (2016) Genomic and functional characterization of the unusual pLOCK 0919 plasmid harboring the *spaCBA* pili cluster in *Lactobacillus casei* LOCK 0919. *Genome Biol Evol* 8:202–217. <https://doi.org/10.1093/gbe/evv247>
- Alelung P, Shen W, Rozalska B, Hellman U, Ljungh A, Wadström T (1994) Purification of collagen-binding proteins of *Lactobacillus reuteri* NCIB 11951. *Curr Microbiol* 28:231–236
- Almeida CC, Lorena SLS, Pavan CR, Akasaka HMI, Mesquita MA (2012) Beneficial effects of long-term consumption of a probiotic combination of *Lactobacillus casei* Shirota and *Bifidobacterium breve* Yakult may persist after suspension of therapy in lactose-intolerant patients. *Nutr Clin Pract* 27:247–251. <https://doi.org/10.1177/0884533612440289>
- Altschul SF, Gish W, Miller W, Myers EW, Lipman DJ (1990) Basic local alignment search tool. *J Mol Biol* 215:403–410. [https://doi.org/10.1016/S0022-2836\(05\)80360-2](https://doi.org/10.1016/S0022-2836(05)80360-2)
- Antikainen J, Anton L, Sillanpää J, Korhonen TK (2002) Domains in the S-layer protein CbsA of *Lactobacillus crispatus* involved in adherence to collagens, laminin and lipoteichoic acids and in self-assembly: adhesive domains in S-layer protein. *Mol Microbiol* 46:381–394. <https://doi.org/10.1046/j.1365-2958.2002.03180.x>
- Aziz RK, Bartels D, Best AA, DeJongh M, Disz T, Edwards RA, Formsma K, Gerdes S, Glass EM, Kubal M, Meyer F, Olsen GJ, Olson R, Osterman AL, Overbeek RA, McNeil LK, Paarmann D, Paczian T, Parrello B, Pusch GD, Reich C, Stevens R, Vassieva O, Vonstein V, Wilke A, Zagnitko O (2008) The RAST server: rapid annotations using subsystems technology. *BMC Genomics* 9:75. <https://doi.org/10.1186/1471-2164-9-75>
- Balson DF, Shaw WV (1990) Nucleotide sequence of the *rep* gene of staphylococcal plasmid pCW7. *Plasmid* 24:74–80. [https://doi.org/10.1016/0147-619X\(90\)90027-A](https://doi.org/10.1016/0147-619X(90)90027-A)
- Barr JJ, Auro R, Furlan M, Whiteson KL, Erb ML, Pogliano J, Stotland A, Wolkowicz R, Cutting AS, Doran KS, Salamon P, Youle M, Rohwer F (2013) Bacteriophage adhering to mucus provide a non-host-derived immunity. *Proc Natl Acad Sci* 110:10771–10776. <https://doi.org/10.1073/pnas.1305923110>
- Bäuerl C, Pérez-Martínez G, Yan F, Polk DB, Monedero V (2010) Functional analysis of the p40 and p75 proteins from *Lactobacillus casei* BL23. *J Mol Microbiol Biotechnol* 19:231–241. <https://doi.org/10.1159/000322233>
- Bourand A, Yebra MJ, Boël G, Mazé A, Deutscher J (2013) Utilization of D-ribitol by *Lactobacillus casei* BL23 requires a mannose-type phosphotransferase system and three catabolic enzymes. *J Bacteriol* 195:2652–2661. <https://doi.org/10.1128/JB.02276-12>
- Buck BL, Altermann E, Svingerud T, Klaenhammer TR (2005) Functional analysis of putative adhesion factors in *Lactobacillus acidophilus* NCFM. *Appl Environ Microbiol* 71:8344–8351. <https://doi.org/10.1128/AEM.71.12.8344-8351.2005>
- Cai H, Thompson R, Budinich MF, Broadbent JR, Steele JL (2009) Genome sequence and comparative genome analysis of *Lactobacillus casei*: insights into their niche-associated evolution. *Genome Biol Evol* 1:239–257. <https://doi.org/10.1093/gbe/evp019>
- Ceapa C, Lambert J, van Limpt K, Wels M, Smokvina T, Knol J, Kleerebezem M (2015) Correlation of *Lactobacillus rhamnosus* genotypes and carbohydrate utilization signatures determined by phenotype profiling. *Appl Environ Microbiol* 81:5458–5470. <https://doi.org/10.1128/AEM.00851-15>
- Claesson MJ, van Sinderen D, O'Toole PW (2007) The genus *Lactobacillus* – a genomic basis for understanding its diversity. *FEMS Microbiol Lett* 269:22–28. <https://doi.org/10.1111/j.1574-6968.2006.00596.x>
- Darzentas N (2010) Circoletto: visualizing sequence similarity with Circos. *Bioinformatics* 26:2620–2621. <https://doi.org/10.1093/bioinformatics/btq484>
- Desmond C, Ross RP, Fitzgerald G, Stanton C (2005) Sequence analysis of the plasmid genome of the probiotic strain *Lactobacillus paracasei* NFBC338 which includes the plasmids pCD01 and pCD02. *Plasmid* 54:160–175. <https://doi.org/10.1016/j.plasmid.2005.04.001>
- Di Cerbo A, Palmieri B (2013) *Lactobacillus paracasei* subsp. *paracasei* F19: a farmacogenomic and clinical update. *Nutr Hosp* 28:1842–1150. <https://doi.org/10.3305/nh.2013.28.6.6831>
- Dintilhac A, Alloing G, Granadel C, Claverys JP (1997) Competence and virulence of *Streptococcus pneumoniae*: Adc and PsaA mutants exhibit a requirement for Zn and Mn resulting from inactivation of putative ABC metal permeases. *Mol Microbiol* 25:727–739
- Douillard FP, Ribbera A, Järvinen HM, Kant R, Pietilä TE, Randazzo C, Paulin L, Laine PK, Caggia C, von Ossowski I, Reunanen J, Satokari R, Salminen S, Palva A, de Vos WM (2013) Comparative genomic and functional analysis of *Lactobacillus casei* and *Lactobacillus rhamnosus* strains marketed as probiotics. *Appl Environ Microbiol* 79:1923–1933. <https://doi.org/10.1128/AEM.03467-12>
- FAO/WHO (2002) Guidelines for the evaluation of probiotics in food. Report of a joint FAO/WHO working group on drafting guidelines for the evaluation of probiotics in food. World Health Organization, London
- Felis GE, Dellaglio F (2007) Taxonomy of lactobacilli and bifidobacteria. *Curr Issues Intest Microbiol* 8:44–61
- Fuller R (1991) Probiotics in human medicine. *Gut* 32(4):439–442. <https://doi.org/10.1136/gut.32.4.439>
- Gabbianelli R, Scotti R, Ammendola S, Petrarca P, Nicolini L, Battistoni A (2011) Role of ZnuABC and ZinT in *Escherichia coli* O157:H7 zinc acquisition and interaction with epithelial cells. *BMC Microbiol* 11:36. <https://doi.org/10.1186/1471-2180-11-36>
- Goh YJ, Klaenhammer TR (2014) Insights into glycogen metabolism in *Lactobacillus acidophilus*: impact on carbohydrate metabolism, stress tolerance and gut retention. *Microb Cell Factories* 13:94. <https://doi.org/10.1186/s12934-014-0094-3>
- Goh YJ, Zhang C, Benson AK, Schlegel V, Lee J-H, Hutkins RW (2006) Identification of a putative operon involved in fructooligosaccharide utilization by *Lactobacillus paracasei*. *Appl Environ Microbiol* 72:7518–7530. <https://doi.org/10.1128/AEM.00877-06>
- Grant JR, Stothard P (2008) The CGView Server: a comparative genomics tool for circular genomes. *Nucleic Acids Res* 36:W181–W184. <https://doi.org/10.1093/nar/gkn179>
- Grissa I, Vergnaud G, Pourcel C (2007) CRISPRFinder: a web tool to identify clustered regularly interspaced short palindromic repeats. *Nucleic Acids Res* 35:W52–W57. <https://doi.org/10.1093/nar/gkm360>
- Haft DH, Selengut J, Mongodin EF, Nelson KE (2005) A guild of 45 CRISPR-associated (Cas) protein families and multiple CRISPR/Cas subtypes exist in prokaryotic genomes. *PLoS Comput Biol* 1:e60. <https://doi.org/10.1371/journal.pcbi.0010060>
- Harris RS (2007) Improved pairwise alignment of genomic DNA. Ph.D. Thesis, The Pennsylvania State University.
- Holzapfel WH, Haberer P, Geisen R, Björkroth J, Schillinger U (2001) Taxonomy and important features of probiotic microorganisms in food and nutrition. *Am J Clin Nutr* 73:365s–373s. <https://doi.org/10.1093/ajcn/73.2.365s>

- Hynonen U, Westerlund-Wikstrom B, Palva A, Korhonen TK (2002) Identification by flagellum display of an epithelial cell- and fibronectin-binding function in the SlpA surface protein of *Lactobacillus brevis*. *J Bacteriol* 184:3360–3367. <https://doi.org/10.1128/JB.184.12.3360-3367.2002>
- Jankowska A, Laubitz D, Antushevich H, Zabielski R, Grzesiuk E (2008) Competition of *Lactobacillus paracasei* with *Salmonella enterica* for adhesion to Caco-2 cells. *J Biomed Biotechnol* 2008:1–6. <https://doi.org/10.1155/2008/357964>
- Johnson-Henry KC, Hagen KE, Gordonpour M, Tompkins TA, Sherman PM (2007) Surface-layer protein extracts from *Lactobacillus helveticus* inhibit enterohaemorrhagic *Escherichia coli* O157:H7 adhesion to epithelial cells. *Cell Microbiol* 9:356–367. <https://doi.org/10.1111/j.1462-5822.2006.00791.x>
- Judicial Commission of the International Committee on Systematics of Bacteria (2008) The type strain of *Lactobacillus casei* is ATCC 393, ATCC 334 cannot serve as the type because it represents a different taxon, the name *Lactobacillus paracasei* and its subspecies names are not rejected and the revival of the name “*Lactobacillus zeae*” contravenes Rules 51b (1) and (2) of the International Code of Nomenclature of Bacteria. *Opinion 82*. *Int J Syst Evol Microbiol* 58:1764–1765. <https://doi.org/10.1099/ijs.0.2008/005330-0>
- Kalliomäki M, Salminen S, Poussa T, Arvilommi H, Isolauri E (2003) Probiotics and prevention of atopic disease: 4-year follow-up of a randomised placebo-controlled trial. *Lancet* 361:1869–1871. [https://doi.org/10.1016/S0140-6736\(03\)13490-3](https://doi.org/10.1016/S0140-6736(03)13490-3)
- Kandler O (1983) Carbohydrate metabolism in lactic acid bacteria. *Antonie Van Leeuwenhoek* 49:209–224. <https://doi.org/10.1007/BF00399499>
- Kanehisa M, Sato Y, Morishima K (2016) BlastKOALA and GhostKOALA: KEGG tools for functional characterization of genome and metagenome sequences. *J Mol Biol* 428:726–731. <https://doi.org/10.1016/j.jmb.2015.11.006>
- Kankainen M, Paulin L, Tynkkynen S, von Ossowski I, Reunanen J, Partanen P, Satokari R, Vesterlund S, Hendrickx APA, Lebeer S, De Keersmaecker SCJ, Vanderleyden J, Hamalainen T, Laukkanen S, Salovuori N, Ritari J, Alatalo E, Korpela R, Mattila-Sandholm T, Lassig A, Hatakka K, Kinnunen KT, Karjalainen H, Saxelin M, Laakso K, Surakka A, Palva A, Salusjarvi T, Auvinen P, de Vos WM (2009) Comparative genomic analysis of *Lactobacillus rhamnosus* GG reveals pili containing a human- mucus binding protein. *Proc Natl Acad Sci* 106:17193–17198. <https://doi.org/10.1073/pnas.0908876106>
- Kant R, Blom J, Palva A, Siezen RJ, de Vos WM (2011) Comparative genomics of *Lactobacillus*: comparative analysis of 20 complete *Lactobacillus* genomes. *Microb Biotechnol* 4:323–332. <https://doi.org/10.1111/j.1751-7915.2010.00215.x>
- Klaenhammer TR, Altermann E, Pfeiler E, Buck BL, Goh Y-J, O’Flaherty S, Barrangou R, Duong T (2008) Functional genomics of probiotic lactobacilli. *J Clin Gastroenterol* 42:S160–S162. <https://doi.org/10.1097/MCG.0b013e31817da140>
- Kleerebezem M, Hols P, Bernard E, Rolain T, Zhou M, Siezen RJ, Bron PA (2010) The extracellular biology of the lactobacilli. *FEMS Microbiol Rev* 34:199–230. <https://doi.org/10.1111/j.1574-6976.2009.00208.x>
- Kolida S, Tuohy K, Gibson GR (2002) Prebiotic effects of inulin and oligofructose. *Br J Nutr* 87:S193–S197. <https://doi.org/10.1079/BJN/2002537>
- Koryszewska-Baginska A, Aleksandrak-Piekarczyk T, Bardowski J (2013) Complete genome sequence of the probiotic strain *Lactobacillus casei* (formerly *Lactobacillus paracasei*) LOCK919. *Genome Announc* 1:e00758–e00713. <https://doi.org/10.1128/genomeA.00758-13>
- Koryszewska-Baginska A, Bardowski J, Aleksandrak-Piekarczyk T (2014) Genome sequence of the probiotic strain *Lactobacillus rhamnosus* (formerly *Lactobacillus casei*) LOCK908. *Genome Announc* 2:e00120–e00114. <https://doi.org/10.1128/genomeA.00120-14>
- Krasowska A, Sigler K (2014) How microorganisms use hydrophobicity and what does this mean for human needs? *Front Cell Infect Microbiol* 4:112. <https://doi.org/10.3389/fcimb.2014.00112>
- Lane DJ (1991) 16S/23S rRNA sequencing. In: Stackebrandt E, Goodfellow M (eds) *Nucleic acids techniques in bacterial systematics*. John Wiley & Sons, Chichester, pp 115–147
- Lebeer S, Vanderleyden J, De Keersmaecker SCJ (2008) Genes and molecules of lactobacilli supporting probiotic action. *Microbiol Mol Biol Rev* 72:728–764. <https://doi.org/10.1128/MMBR.00017-08>
- Lim S-M (2012) Factors affecting adhesion of lactic acid bacteria to Caco-2 cells and inhibitory effect on infection of *Salmonella typhimurium*. *J Microbiol Biotechnol* 22:1731–1739. <https://doi.org/10.4014/jmb.1208.08049>
- Lorca GL, Barabote RD, Zlotopolski V, Tran C, Winnen B, Hvorup RN, Stonestrom AJ, Nguyen E, Huang L-W, Kim DS, Saier MH (2007) Transport capabilities of eleven Gram-positive bacteria: comparative genomic analyses. *Biochim Biophys Acta Biomembr* 1768:1342–1366. <https://doi.org/10.1016/j.bbamem.2007.02.007>
- Makarova K, Slesarev A, Wolf Y, Sorokin A, Mirkin B, Koonin E, Pavlov A, Pavlova N, Karamychev V, Polouchine N, Shakhova V, Grigoriev I, Lou Y, Rohksar D, Lucas S, Huang K, Goodstein DM, Hawkins T, Plengvidhya V, Welker D, Hughes J, Goh Y, Benson A, Baldwin K, Lee J-H, Diaz-Muniz I, Dosti B, Smeianov V, Wechter W, Barabote R, Lorca G, Altermann E, Barrangou R, Ganesan B, Xie Y, Rawsthorne H, Tamir D, Parker C, Breidt F, Broadbent J, Hutkins R, O’Sullivan D, Steele J, Unlu G, Saier M, Klaenhammer T, Richardson P, Kozyavkin S, Weimer B, Mills D (2006) Comparative genomics of the lactic acid bacteria. *Proc Natl Acad Sci* 103:15611–15616. <https://doi.org/10.1073/pnas.0607117103>
- Mandlik A, Swierczynski A, Das A, Ton-That H (2008) Pili in Gram-positive bacteria: assembly, involvement in colonization and biofilm development. *Trends Microbiol* 16:33–40. <https://doi.org/10.1016/j.tim.2007.10.010>
- Marco ML, Pavan S, Kleerebezem M (2006) Towards understanding molecular modes of probiotic action. *Curr Opin Biotechnol* 17: 204–210. <https://doi.org/10.1016/j.copbio.2006.02.005>
- Mercanti DJ, Rousseau GM, Capra ML, Quiberoni A, Tremblay DM, Labrie SJ, Moineau S (2016) Genomic diversity of phages infecting probiotic strains of *Lactobacillus paracasei*. *Appl Environ Microbiol* 82:95–105. <https://doi.org/10.1128/AEM.02723-15>
- Miyoshi Y, Okada S, Uchimura T, Satoh E (2006) A mucus adhesion promoting protein, MapA, mediates the adhesion of *Lactobacillus reuteri* to Caco-2 human intestinal epithelial cells. *Biosci Biotechnol Biochem* 70:1622–1628. <https://doi.org/10.1271/bbb.50688>
- Monedero V, Mazé A, Boël G, Zúñiga M, Beaufils S, Hartke A, Deutscher J (2007) The phosphotransferase system of *Lactobacillus casei*: regulation of carbon metabolism and connection to cold shock response. *J Mol Microbiol Biotechnol* 12:20–32. <https://doi.org/10.1159/000096456>
- Muñoz-Provencio D, Pérez-Martínez G, Monedero V (2010) Characterization of a fibronectin-binding protein from *Lactobacillus casei* BL23. *J Appl Microbiol* 108:1050–1059. <https://doi.org/10.1111/j.1365-2672.2009.04508.x>
- Navarre WW, Schneewind O (1999) Surface proteins of Gram-positive bacteria and mechanisms of their targeting to the cell wall envelope. *Microbiol Mol Biol Rev* MMBR 63:174–229
- Nowak A, Motyl I, Śliżewska K, Libudzisz Z, Klewicka E (2016) Adherence of probiotic bacteria to human colon epithelial cells

- and inhibitory effect against enteric pathogens. *Int J Dairy Technol* 69:532–539. <https://doi.org/10.1111/1471-0307.12286>
- Ouwehand AC, Salminen S, Isolauri E (2002) Probiotics: an overview of beneficial effects. *Antonie Van Leeuwenhoek* 82:279–289
- Ouwehand AC, Tölkö S, Kulmala J, Salminen S, Salminen E (2000) Adhesion of inactivated probiotic strains to intestinal mucus: adhesion of inactivated probiotics. *Lett Appl Microbiol* 31:82–86. <https://doi.org/10.1046/j.1472-765x.2000.00773.x>
- Pérez PF, Minnaard Y, Disalvo EA, De Antoni GL (1998) Surface properties of bifidobacterial strains of human origin. *Appl Environ Microbiol* 64:21–26
- Pretzer G, Snel J, Molenaar D, Wiersma A, Bron PA, Lambert J, de Vos WM, van der Meer R, Smits MA, Kleerebezem M (2005) Biodiversity-based identification and functional characterization of the mannose-specific adhesin of *Lactobacillus plantarum*. *J Bacteriol* 187:6128–6136. <https://doi.org/10.1128/JB.187.17.6128-6136.2005>
- Reunanan J, von Ossowski I, Hendrickx APA, Palva A, de Vos WM (2012) Characterization of the SpaCBA pilus fibers in the probiotic *Lactobacillus rhamnosus* GG. *Appl Environ Microbiol* 78:2337–2344. <https://doi.org/10.1128/AEM.07047-11>
- Saier MH (2000) Families of transmembrane sugar transport proteins. *Mol Microbiol* 35:699–710. <https://doi.org/10.1046/j.1365-2958.2000.01759.x>
- Saier MH, Reddy VS, Tsu BV, Ahmed MS, Li C, Moreno-Hagelsieb G (2016) The transporter classification database (TCDB): recent advances. *Nucleic Acids Res* 44:D372–D379. <https://doi.org/10.1093/nar/gkv1103>
- Schott A-S, Behr J, Quinn J, Vogel RF (2016) MALDI-TOF mass spectrometry enables a comprehensive and fast analysis of dynamics and qualities of stress responses of *Lactobacillus paracasei* subsp. *paracasei* F19. *PLoS One* 11:e0165504. <https://doi.org/10.1371/journal.pone.0165504>
- Segers ME, Lebeer S (2014) Towards a better understanding of *Lactobacillus rhamnosus* GG - host interactions. *Microb Cell Factories* 13:S7. <https://doi.org/10.1186/1475-2859-13-S1-S7>
- Smokvina T, Wels M, Polka J, Chervaux C, Brisse S, Boekhorst J, van Hylckama Vlieg JET, Siezen RJ (2013) *Lactobacillus paracasei* comparative genomics: towards species pan-genome definition and exploitation of diversity. *PLoS One* 8:e68731. <https://doi.org/10.1371/journal.pone.0068731>
- Stefanovic E, McAuliffe O (2018) Comparative genomic and metabolic analysis of three *Lactobacillus paracasei* cheese isolates reveals considerable genomic differences in strains from the same niche. *BMC Genomics* 19:205. <https://doi.org/10.1186/s12864-018-4586-0>
- Stiles ME, Holzappel WH (1997) Lactic acid bacteria of foods and their current taxonomy. *Int J Food Microbiol* 36:1–29. [https://doi.org/10.1016/S0168-1605\(96\)01233-0](https://doi.org/10.1016/S0168-1605(96)01233-0)
- Styriak I, Nemcova R, Chang Y-H, Ljungh A (2003) Binding of extracellular matrix molecules by probiotic bacteria. *Lett Appl Microbiol* 37:329–333. <https://doi.org/10.1046/j.1472-765x.2003.01402.x>
- Sun Z, Harris HMB, McCann A, Guo C, Argimón S, Zhang W, Yang X, Jeffery IB, Cooney JC, Kagawa TF, Liu W, Song Y, Salvetti E, Wrobel A, Rasinkangas P, Parkhill J, Rea MC, O’Sullivan O, Ritari J, Douillard FP, Paul Ross R, Yang R, Briner AE, Felis GE, de Vos WM, Barrangou R, Klaenhammer TR, Caufield PW, Cui Y, Zhang H, O’Toole PW (2015) Expanding the biotechnology potential of lactobacilli through comparative genomics of 213 strains and associated genera. *Nat Commun* 6:8322. <https://doi.org/10.1038/ncomms9322>
- Sykora J, Valeckov AK, Amlerova J, Siala K, Dedek P, Watkins S, Varvarovska J, Stozicky F, Pazdiora P, Schwarz J (2005) Effects of a specially designed fermented milk product containing probiotic *Lactobacillus casei* DN-114 001 and the eradication of *H. pylori* in children: a prospective randomized double-blind study. *J Clin Gastroenterol* 39:692–698. <https://doi.org/10.1097/01.mcg.0000173855.77191.44>
- Tanaka K, Komiyama A, Sonomoto K, Ishizaki A, Hall S, Stanbury P (2002) Two different pathways for D -xylose metabolism and the effect of xylose concentration on the yield coefficient of L -lactate in mixed-acid fermentation by the lactic acid bacterium *Lactococcus lactis* IO-1. *Appl Microbiol Biotechnol* 60:160–167. <https://doi.org/10.1007/s00253-002-1078-5>
- Tanaka T, Ogura M (1998) A novel *Bacillus natto* plasmid pLS32 capable of replication in *Bacillus subtilis*. *FEBS Lett* 422:243–246. [https://doi.org/10.1016/S0014-5793\(98\)00015-5](https://doi.org/10.1016/S0014-5793(98)00015-5)
- Tettelin H (2001) Complete genome sequence of a virulent isolate of *Streptococcus pneumoniae*. *Science* 293:498–506. <https://doi.org/10.1126/science.1061217>
- Toba T, Virkola R, Westerlund B, Bjorkman Y, Sillanpaa J, Vartio T, Kalkinen N, Korhonen TK (1995) A collagen-binding S-layer protein in *Lactobacillus crispatus*. *Appl Environ Microbiol* 61:2467–2471
- Toh H, Oshima K, Nakano A, Takahata M, Murakami M, Takaki T, Nishiyama H, Igimi S, Hattori M, Morita H (2013) Genomic adaptation of the *Lactobacillus casei* group. *PLoS One* 8:e75073. <https://doi.org/10.1371/journal.pone.0075073>
- Turpin W, Humblot C, Noordine M-L, Thomas M, Guyot J-P (2012) Lactobacillaceae and cell adhesion: genomic and functional screening. *PLoS One* 7:e38034. <https://doi.org/10.1371/journal.pone.0038034>
- Turroni F, Serafini F, Foroni E, Duranti S, O’Connell Motherway M, Taverniti V, Mangifesta M, Milani C, Viappiani A, Roversi T, Sanchez B, Santoni A, Gioiosa L, Ferrarini A, Delledonne M, Margolles A, Piazza L, Palanza P, Bolchi A, Guglielmetti S, van Sinderen D, Ventura M (2013) Role of sortase-dependent pili of *Bifidobacterium bifidum* PRL2010 in modulating bacterium-host interactions. *Proc Natl Acad Sci* 110:11151–11156. <https://doi.org/10.1073/pnas.1303897110>
- Van Domselaar GH, Stothard P, Shrivastava S, Cruz JA, Guo A, Dong X, Lu P, Szafron D, Greiner R, Wishart DS (2005) BASys: a web server for automated bacterial genome annotation. *Nucleic Acids Res* 33:W455–W459. <https://doi.org/10.1093/nar/gki593>
- Velez MP, De Keersmaecker SCJ, Vanderleyden J (2007) Adherence factors of *Lactobacillus* in the human gastrointestinal tract. *FEMS Microbiol Lett* 276:140–148. <https://doi.org/10.1111/j.1574-6968.2007.00908.x>
- Ventura M, O’Flaherty S, Claesson MJ, Turroni F, Klaenhammer TR, van Sinderen D, O’Toole PW (2009) Genome-scale analyses of health-promoting bacteria: probiogenomics. *Nat Rev Microbiol* 7:61–71. <https://doi.org/10.1038/nrmicro2047>
- Vinay-Lara E, Hamilton JJ, Stahl B, Broadbent JR, Reed JL, Steele JL (2014) Genome -scale reconstruction of metabolic networks of *Lactobacillus casei* ATCC 334 and 12A. *PLoS One* 9:e110785. <https://doi.org/10.1371/journal.pone.0110785>
- Visweswaran GRR, Leenhouts K, van Roosmalen M, Kok J, Buist G (2014) Exploiting the peptidoglycan-binding motif, LysM, for medical and industrial applications. *Appl Microbiol Biotechnol*. <https://doi.org/10.1007/s00253-014-5633-7>
- Wang T-T, Lee BH (1997) Plasmids in *Lactobacillus*. *Crit Rev Biotechnol* 17:227–272. <https://doi.org/10.3109/07388559709146615>
- Widyastuti Y, Rohmatussolihah FA (2014) The role of lactic acid bacteria in milk fermentation. *Food Nutr Sci* 05:435–442. <https://doi.org/10.4236/fns.2014.54051>

- Yebra MJ, Veyrat A, Santos MA, Perez-Martinez G (2000) Genetics of L-sorbose transport and metabolism in *Lactobacillus casei*. J Bacteriol 182:155–163. <https://doi.org/10.1128/JB.182.1.155-163.2000>
- Yebra MJ, Zuniga M, Beaufils S, Perez-Martinez G, Deutscher J, Monedero V (2007) Identification of a gene cluster enabling *Lactobacillus casei* BL23 to utilize myo-inositol. Appl Environ Microbiol 73:3850–3858. <https://doi.org/10.1128/AEM.00243-07>
- Yin Y, Mao X, Yang J, Chen X, Mao F, Xu Y (2012) dbCAN: a web resource for automated carbohydrate-active enzyme annotation. Nucleic Acids Res 40:W445–W451. <https://doi.org/10.1093/nar/gks479>
- Yoon S-H, Ha S, Lim J, Kwon S, Chun J (2017) A large-scale evaluation of algorithms to calculate average nucleotide identity. Antonie Van Leeuwenhoek 110:1281–1286. <https://doi.org/10.1007/s10482-017-0844-4>
- Zhang WY, Sun ZH, Yu DL, Airideng C, Chen W, Meng H, Zhang HP (2010) Comparative analysis of iol clusters in *Lactobacillus casei* strains. World J Microbiol Biotechnol 26:1949–1955. <https://doi.org/10.1007/s11274-010-0375-x>
- Zhou Y, Liang Y, Lynch KH, Dennis JJ, Wishart DS (2011) PHAST: a fast phage search tool. Nucleic Acids Res 39:W347–W352. <https://doi.org/10.1093/nar/gkr485>

Publisher's note Springer Nature remains neutral with regard to jurisdictional claims in published maps and institutional affiliations.