

List of Figures:

Figure 1. A schematic representation of the synthesized Zr–Sn/graphene nanocomposite catalyst.

Figure 2. Schematic of a CHFS reactor set-up used for the synthesis of Zr–Sn/graphene nanocomposite catalyst.

Figure 3. Transmission Electron Microscopy (TEM) images of (a) pure metal of tin doped zirconium oxide (Zr–Sn–O) (b) tin doped zirconia/ graphene nanocomposite (Zr–Sn/GO) (c) graphene oxide (GO) sample.

Figure 4. X-ray powder diffraction (XRD) patterns of tin doped zirconium oxide (Zr–Sn–O) (b) tin doped zirconia/ graphene nanocomposite (Zr–Sn/GO).

Figure 5. X-ray photoelectron spectroscopy (XPS) spectra showing (a) deconvoluted C(1s), (b) Zr (3d) region, (c) Sn(3d) region and (d) Sn Auger parameter region.

Figure 6. Model predicted DMC yield vs experimentally obtained DMC yield.

Figure 7. Reaction scheme for the synthesis of DMC from PC and MeOH.

Figure 8. Effect of different heterogeneous catalysts on the direct synthesis of DMC.

Experimental conditions: MeOH:PC molar ratio 1:1; catalyst loading 2.5% (w/w); reaction temperature 433 K; reaction time 4 h and stirring speed 300 rpm.

Figure 9. Effect of MeOH:PC molar ratio on the synthesis of DMC. Experimental conditions: Catalyst: Zr–Sn/GO; catalyst loading 2.5% (w/w); reaction temperature 433 K; reaction time 4 h and stirring speed 300 rpm.

Figure 10. Effect of catalyst loading on PC conversion and yield of DMC. Experimental conditions: Catalyst: Zr–Sn/GO; MeOH:PC molar ratio 10:1; reaction temperature 433 K; reaction time 4 h and stirring speed 300 rpm.

Figure 11. Effect of reaction temperature on PC conversion and yield of DMC. Experimental conditions: Catalyst: Zr–Sn/GO; MeOH:PC molar ratio 10:1; catalyst loading 2.5% (w/w); reaction time 4 h and stirring speed 300 rpm.

Figure 12. Effect of reaction time on PC conversion and yield of DMC. Experimental conditions: Catalyst: Zr–Sn/GO; MeOH:PC molar ratio 10:1; catalyst loading 2.5% (w/w); reaction temperature 433 K and stirring speed 300 rpm.

Figure 13. Effect of stirring speed on PC conversion and yield of DMC. Experimental conditions: Catalyst: Zr–Sn/GO; MeOH:PC molar ratio 10:1; catalyst loading 2.5% (w/w); reaction temperature 433 K and reaction time 4 h.

Figure 14. Effect of catalyst reusability on PC conversion and yield of DMC. Experimental conditions: Catalyst: Zr–Sn/GO; MeOH:PC molar ratio 10:1; catalyst loading 2.5% (w/w); reaction temperature 433 K; reaction time 4 h and stirring speed 300 rpm.

Figure 15. Response surface graph: Effect of MeOH:PC molar ratio and catalyst loading (w/w) on DMC yield.

Figure 16. Response surface graph: Effect of reaction temperature and stirring speed on DMC yield.

Figure 17. Response surface graph: Effect of catalyst loading (w/w) and reaction time on DMC yield.

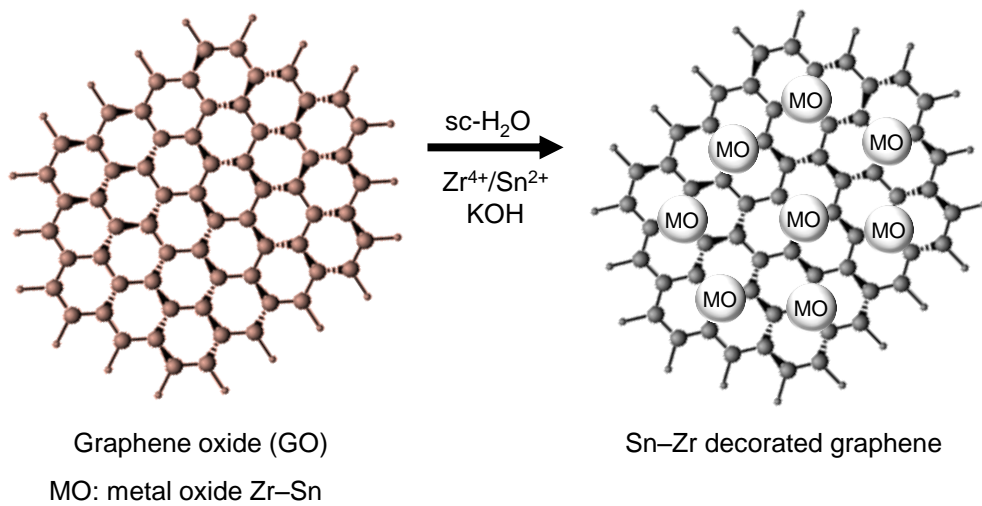


Figure 1

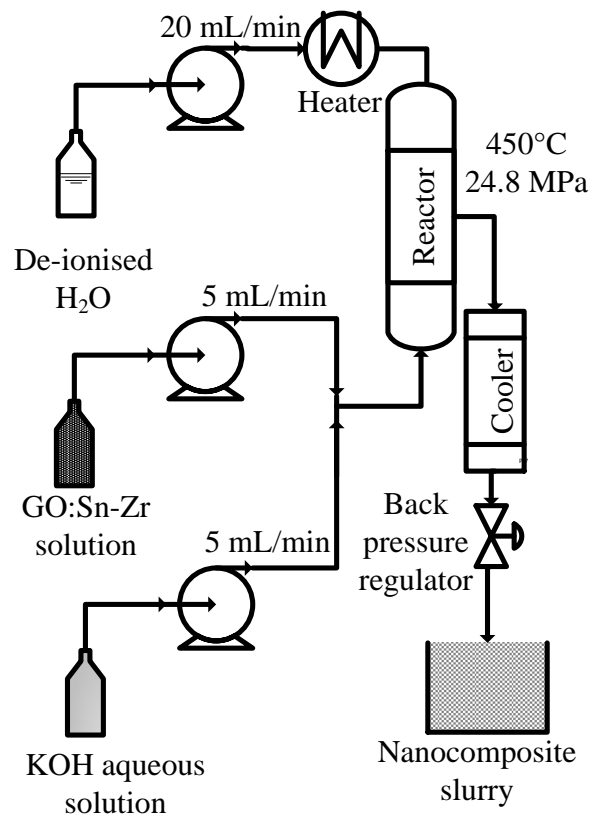


Figure 2

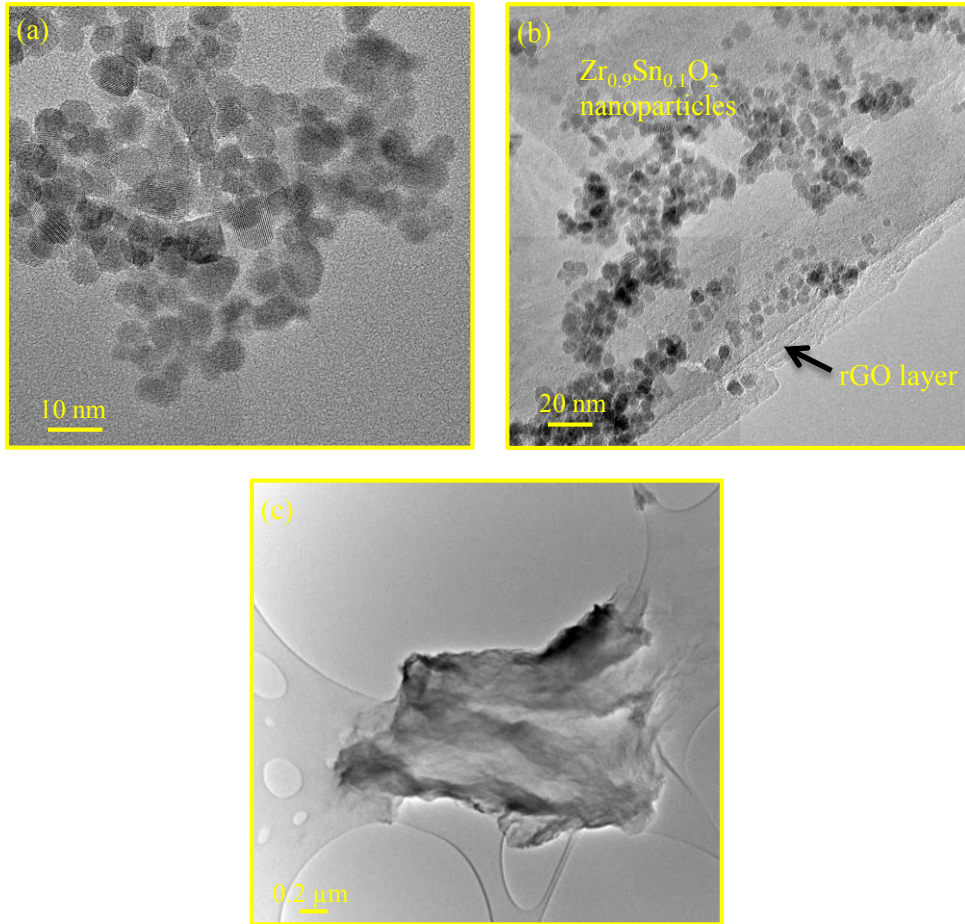


Figure 3

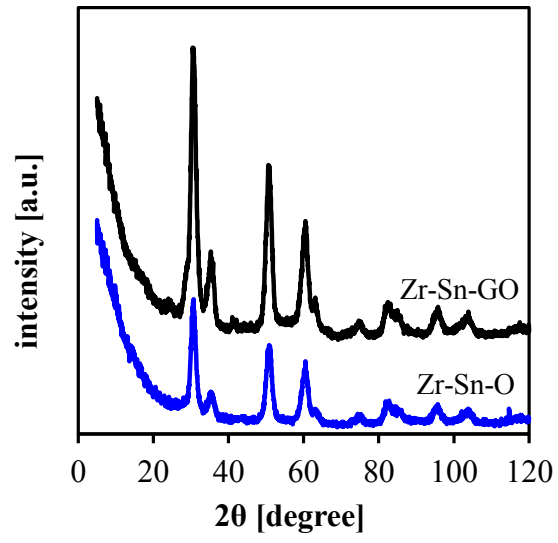


Figure 4

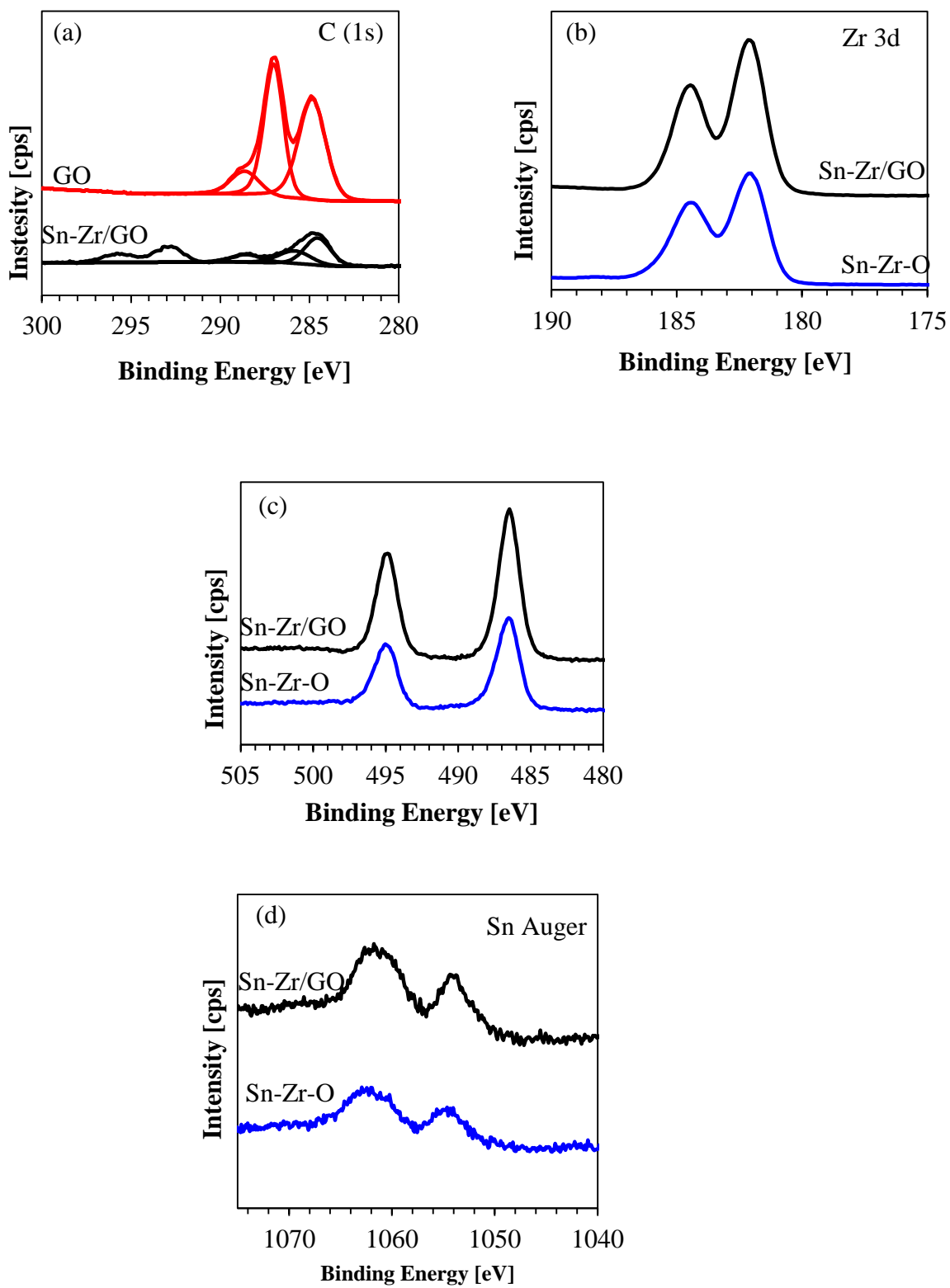


Figure 5

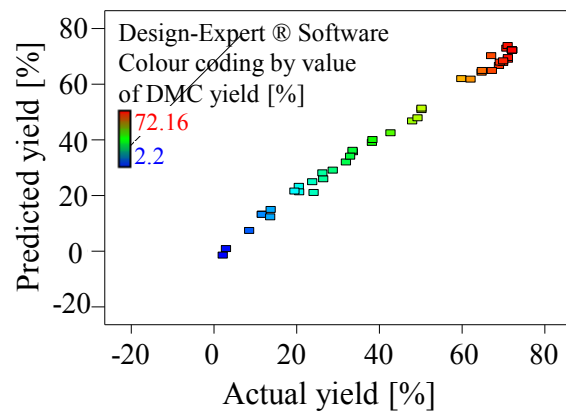


Figure 6

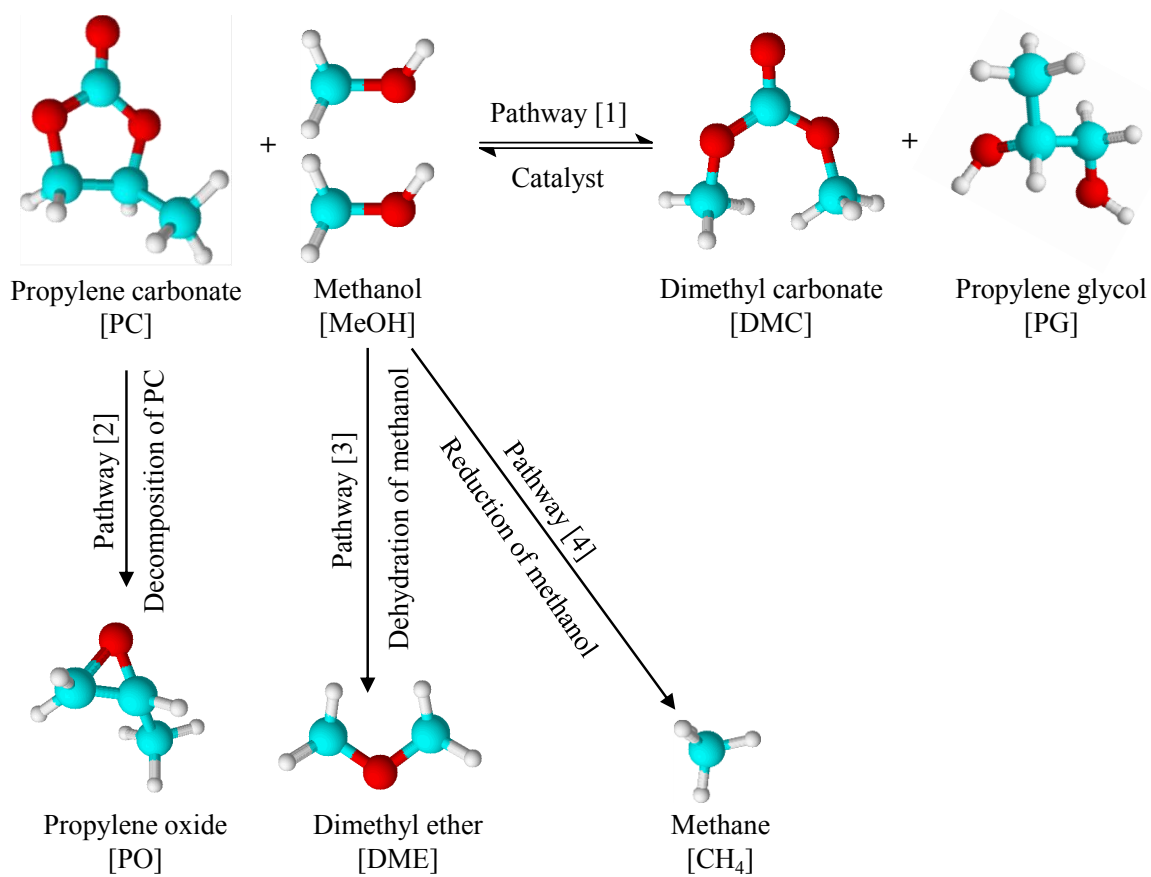


Figure 7

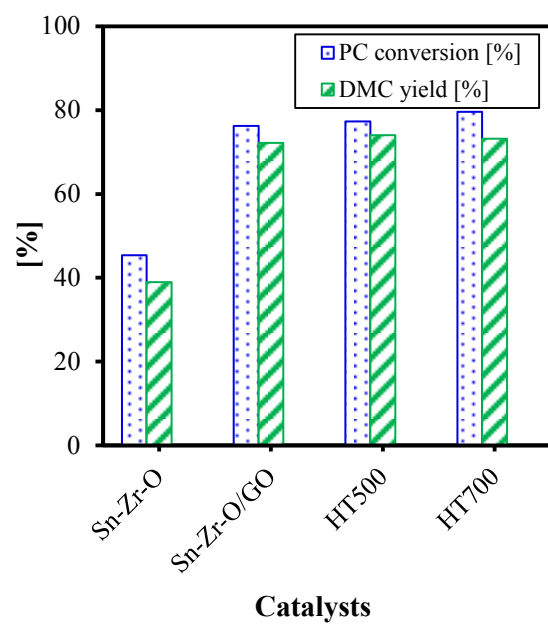


Figure 8

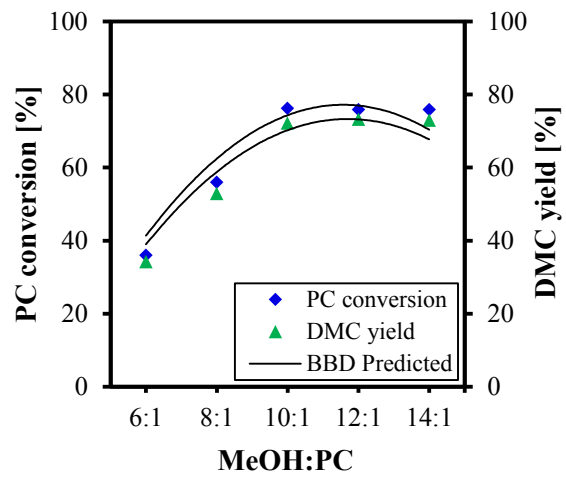


Figure 9

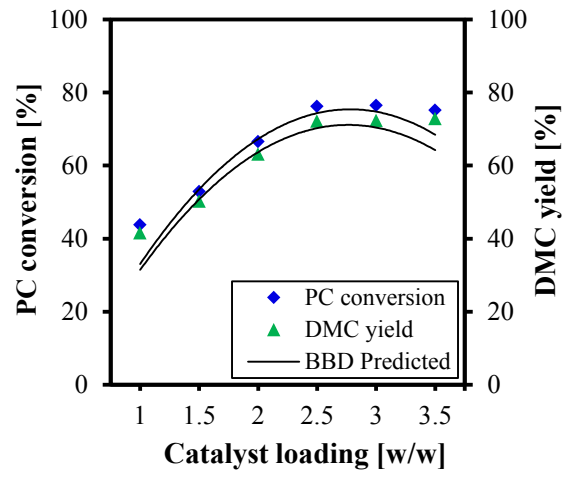


Figure 10

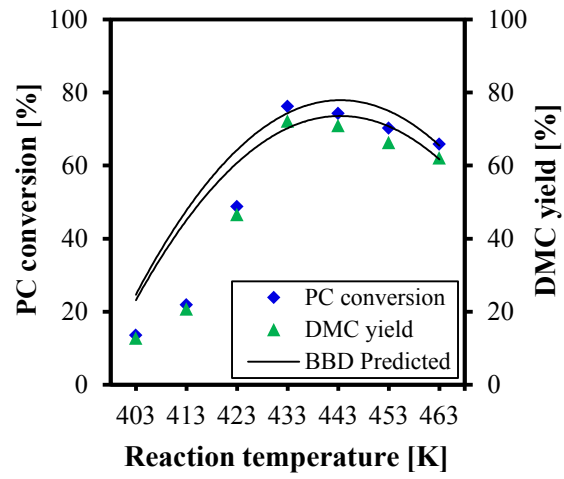


Figure 11

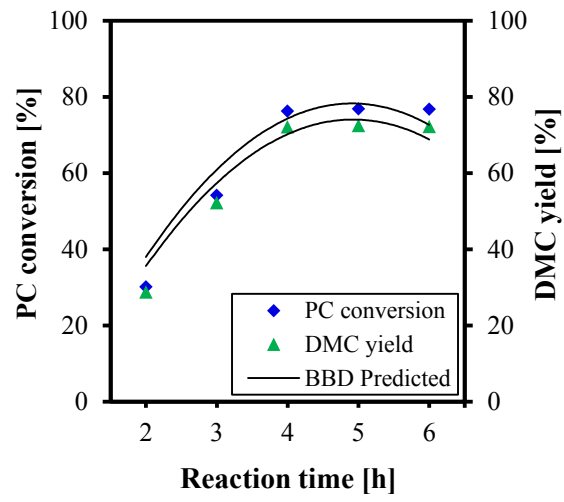


Figure 12

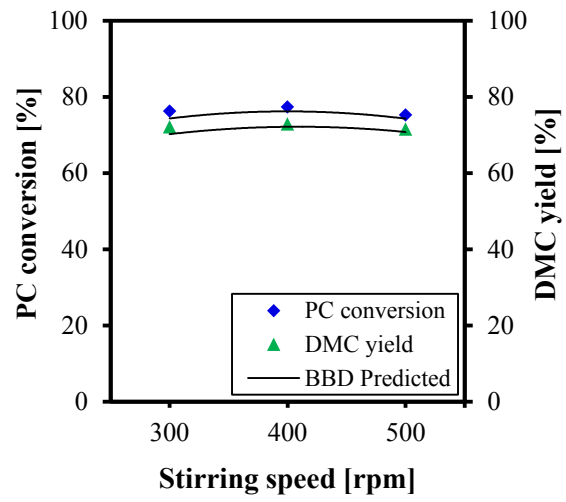


Figure 13

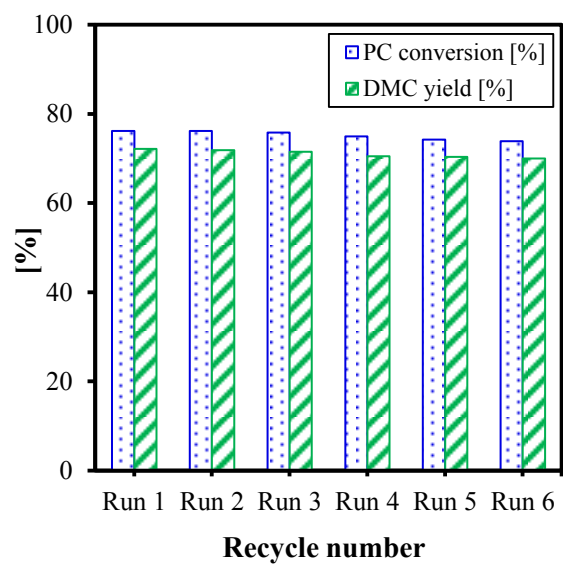


Figure 14

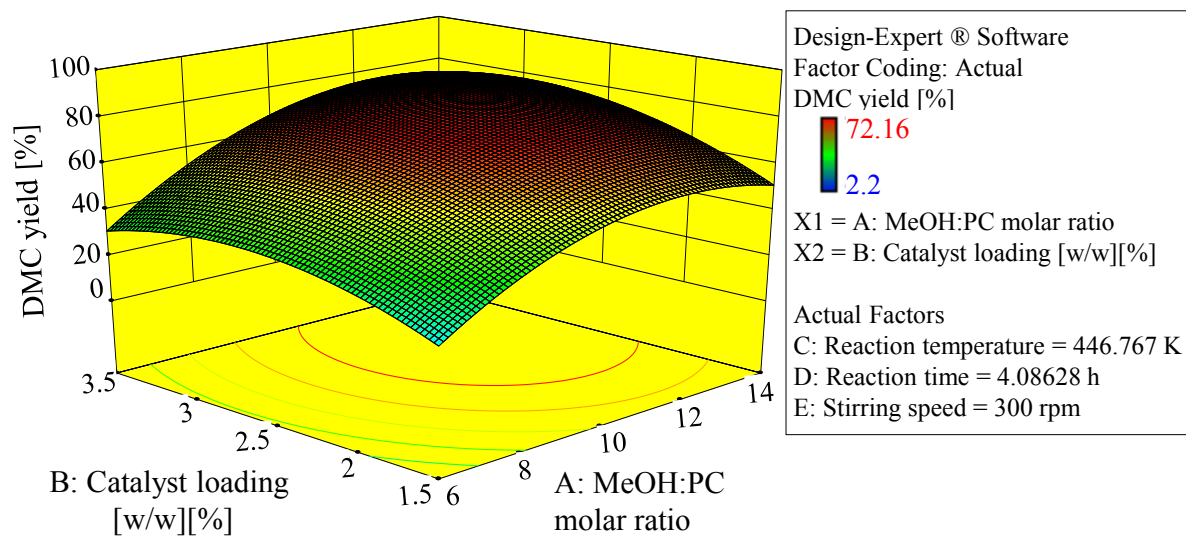


Figure 15

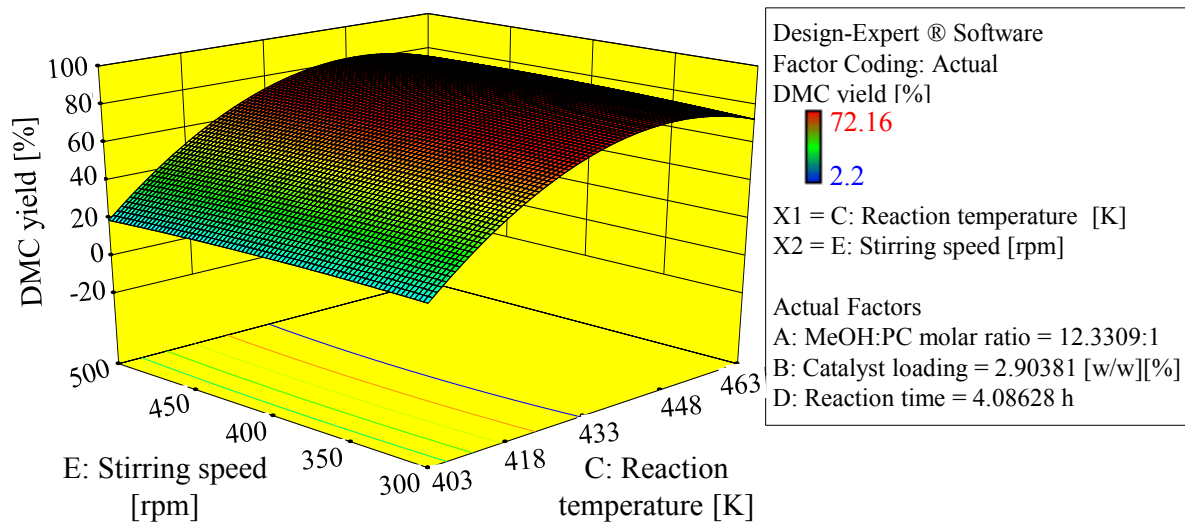


Figure 16

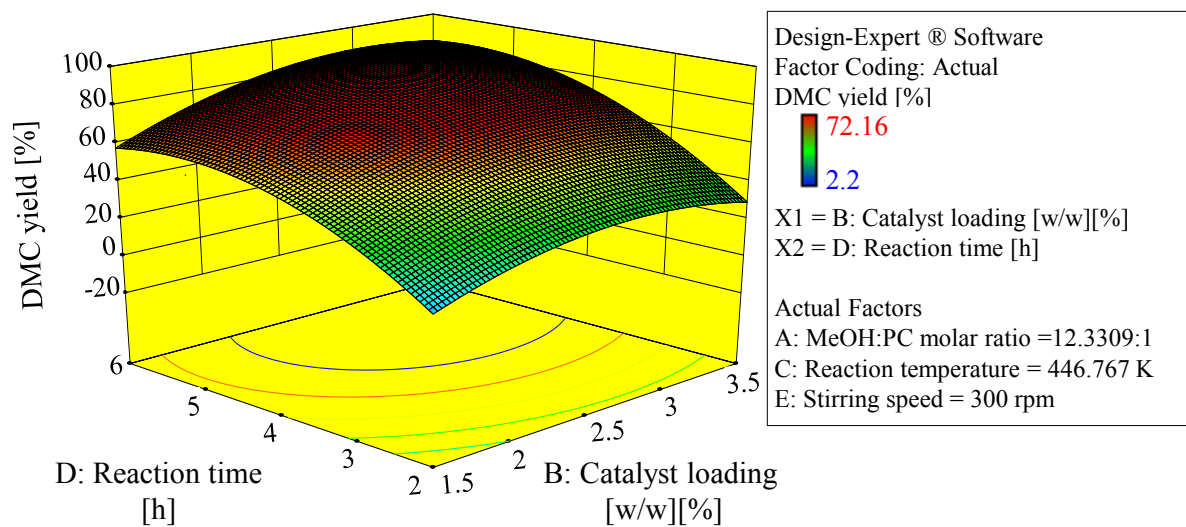


Figure 17