

SCIENTIFIC REPORTS

OPEN

Effect of ovariectomy on the progression of chronic kidney disease-mineral bone disorder (CKD-MBD) in female Cy/+ rats

Colby J. Vorland¹, Pamela J. Lachcik¹, Elizabeth A. Swallow², Corinne E. Metzger², Matthew R. Allen^{2,3,4}, Neal X. Chen³, Sharon M. Moe^{2,3,4} & Kathleen M. Hill Gallant^{1,3}

Male Cy/+ rats have shown a relatively consistent pattern of progressive kidney disease development that displays multiple key features of late stage chronic kidney disease-mineral bone disorder (CKD-MBD), specifically the development of cortical bone porosity. However, progression of disease in female Cy/+ rats, assessed in limited studies, is more heterogeneous and to date has failed to show development of the CKD-MBD phenotype, thus limiting their use as a practical model of progressive CKD-MBD. Animal and human studies suggest that estrogen may be protective against kidney disease in addition to its established protective effect on bone. Therefore, in this study, we aimed to determine the effect of ovariectomy (OVX) on the biochemical and skeletal manifestations of CKD-MBD in Cy/+ female rats. We hypothesized that OVX would accelerate development of the biochemical and skeletal features of CKD-MBD in female Cy/+ rats, similar to those seen in male Cy/+ rats. Female Cy/+ rats underwent OVX (n = 8) or Sham (n = 8) surgery at 15 weeks of age. Blood was collected every 5 weeks post-surgery until 35 weeks of age, when the rats underwent a 4-day metabolic balance, and the tibia and final blood were collected at the time of sacrifice. OVX produced the expected changes in trabecular and cortical parameters consistent with post-menopausal disease, and negative phosphorus balance compared with Sham. However, indicators of CKD-MBD were similar between OVX and Sham (similar kidney weight, plasma blood urea nitrogen, creatinine, creatinine clearance, phosphorus, calcium, parathyroid hormone, and no cortical porosity). Contrary to our hypothesis, OVX did not produce evidence of development of the CKD-MBD phenotype in female Cy/+ rats.

Chronic kidney disease (CKD) affects approximately 13.4% of adults worldwide¹, and prevalence and progression of the disease differ based on biological sex. Estimation of the global prevalence of CKD is higher in women than men¹, but a large cohort study showed a higher proportion of males than females at end stage kidney disease². A meta-analysis of 68 studies on nondiabetic kidney disease concluded that kidney function declines more slowly in women than men³. Population studies show that end-stage kidney disease incidence is higher in men than premenopausal women, but sex differences begin to lessen around menopausal years⁴. In concordance, ovariectomy (OVX) has been demonstrated to accelerate kidney disease in various animal models⁵⁻¹⁰, while exogenous estradiol administration attenuates the disease⁶⁻¹³. Similarly, in premenopausal women, bilateral oophorectomy at age ≤ 45 years was associated with an elevated risk of CKD as assessed by estimated glomerular filtration rate¹⁴. However, a meta-analysis of hormone replacement studies in postmenopausal women found no significant effect on albuminuria or proteinuria when assessed together but in a subgroup analysis of studies assessing only albuminuria there was a small favorable effect of hormone replacement in lowering albuminuria¹⁵. Further, some divergent studies have found no effect^{16,17} or even a protective effect^{18,19} of estrogen loss on kidney disease progression. In addition to the impact on kidney disease progression, estrogen has well-established protective effects

¹Department of Nutrition Science, Purdue University, West Lafayette, IN, 47907, USA. ²Department of Anatomy and Cell Biology, Indiana University School of Medicine, Indianapolis, 46202, IN, USA. ³Division of Nephrology, Department of Medicine, Indiana University School of Medicine, Indianapolis, 46202, IN, USA. ⁴Roudebush Veterans Affairs Medical Center, Indianapolis, IN, 46202, USA. Correspondence and requests for materials should be addressed to K.M.H. (email: hillgallant@purdue.edu)

on bone²⁰. This is highly relevant as a common co-morbidity of CKD is mineral bone disorder (CKD-MBD). CKD-MBD is characterized by biochemical abnormalities of mineral metabolism, bone disease, and vascular or other soft tissue calcification that result in an increased risk for cardiovascular events, bone fractures, and death²¹. Estrogen may modulate the main biochemical indicators of CKD-MBD, fibroblast growth factor-23 (FGF-23), parathyroid hormone (PTH), and 1,25-dihydroxyvitamin D (1,25D), either directly or indirectly²². Thus, estrogen appears to be protective against kidney failure and associated co-morbid conditions. However, biological sex differences in the manifestation and progression of CKD-MBD through the stages of CKD are understudied.

The Cy/+ rat model of CKD is unique in that it has been characterized as a spontaneous slowly progressive model of CKD that exhibits all the key features of CKD-MBD and can be studied at earlier to later stages of disease progression^{23,24}. The phenotype is the result of a missense mutation in *Anks6* that encodes for SamCystin, and results in renal cyst formation²⁵. Male Cy/+ rats experience a clear elevation in blood urea nitrogen (BUN) by 10 weeks of age²³ and show all features of late stage CKD-MBD by 35 to 38 weeks of age, including changes in additional plasma biochemistries such as creatinine, hematocrit, phosphorus and calcium, regulatory hormones PTH and FGF23, bone abnormalities (particularly cortical porosity), and vascular calcification^{24,26,27}. On the contrary, female Cy/+ rats do not experience an elevation in BUN until around 40–44 weeks of age and even then are not comparable to levels in 10-week-old males^{28,29}. This has resulted in minimal use of female Cy/+ rats in studies on CKD-MBD. Therefore, the aim of this study was to determine the effect of OVX on the biochemical and skeletal manifestations of CKD-MBD in Cy/+ female rats. We hypothesized that OVX would accelerate development of the biochemical and skeletal features of CKD-MBD in female Cy/+ rats, similar to those seen in male Cy/+ rats, by 35 weeks of age. Because most women with CKD are postmenopausal or amenorrhoeic due to the disease³⁰, this model would be translationally relevant to a large percentage of women with CKD who have concurrent postmenopausal osteoporosis.

Materials and Methods

Animals. Sixteen female Cy/+ rats were studied from the Cy rat colony maintained at Purdue University, which was rederived from the Indiana University School of Medicine colony maintained by Dr. Sharon Moe. Heterozygosity for the *Anks6* mutation was determined by ear punch and genotyping (Transnetyx, Memphis, TN). Rats were randomly assigned to shoe-box cages (2 rats per cage), and within each cage, randomly assigned to undergo OVX (N = 8) or Sham (N = 8) surgery at 15 weeks of age (described below). Blood was drawn at 10, 20, 25, 30, and 35 weeks of age through the jugular vein after rats were anesthetized with isoflurane. Rats were fed standard rat chow containing 0.7% phosphorus and 1.0% Ca (Envigo Teklad 2018, Madison, WI) and water *ad libitum* until 24 weeks of age, at which time they were switched to an *ad libitum* casein-based diet (0.7% phosphorus and 0.7% calcium) which we have previously shown to lead to more consistent and accelerated kidney decline in Cy/+ males (TD.04539, Envigo Teklad, Madison, WI)²⁴. Rats were fed this diet until sacrifice at 35 weeks of age. At 13 days prior to sacrifice, rats were transferred to wire-bottom metabolic cages and a four-day phosphorus and calcium balance was performed from 9 to 5 days prior to sacrifice. Five days prior to sacrifice, rats were transferred back to shoe-box cages. Body weights were taken weekly. The light-dark cycle was maintained from 6:30AM–6:30PM. Room temperature was held at ~21 °C and humidity ~27%. Experiments were performed in accordance with relevant guidelines and regulations, and this protocol was approved by the Purdue University Animal Care and Use Committee (protocol #1702001543).

OVX and sham procedures. All appropriate steps were taken for performing aseptic surgery for OVX and Sham procedures. OVX procedures followed similarly to those described in the Harlan protocol (HUS-QREC-PRD-932, Issue 1, Revision 03). Briefly, rats were shaved on the dorsal midline where one incision of ~2 cm was made. The incision was pulled to the left side and a small ~10 mm incision was made through the abdominal wall. The ovary was externalized, and a silk ligature was tied between the end of the uterine horn and the ovary and ovarian artery. The ovary was excised and removed. The abdominal wall was closed with an absorbable suture and then the skin was pulled to the opposite side to remove the other ovary by the same method. Sham-operated rats underwent the same surgical procedure, excluding the ligation and removal of the ovaries.

Tissue collection. At sacrifice, rats were anesthetized with isoflurane, the thoracic cavity was opened, and blood was collected from the vena cava resulting in death by exsanguination. Kidneys and uteri were excised and weighed. The left tibia was excised, cleaned of surrounding soft-tissue, and stored in 10% neutral buffered formalin for 3 days, then transfer to 70% ethanol and stored at –20 °C until the time of microcomputed tomography (μCT) analysis³¹.

Phosphorus and calcium balance and percent net absorption. Over the four days of metabolic balance, all urine and feces were collected, and diet was weighed daily to assess 4-day average phosphorus and calcium balance and net absorption. Feces and diet were ashed in a muffle furnace (Thermolyne Sybron Type 30400, Dubuque, IA) for 10 days at 600 °C. Feces were then diluted 1400X and diet 60X with 2% nitric acid. Urine was diluted 11X with 2% nitric acid. Phosphorus and calcium in urine, feces, and diet were quantified by inductively coupled plasma-optical emission spectrophotometry (ICP-OES; Optima 4300DV, Perkin Elmer, Shelton, CT). Urine creatinine was determined by colorimetric method (QuantiChrom Creatinine Assay Kit; BioAssay Systems, Hayward, CA). Four-day phosphorus balance was calculated as dietary phosphorus intake (mg/d) minus urine and fecal phosphorus excretion (mg/d), and percent net phosphorus absorption as phosphorus intake (mg/d) minus fecal excretion (mg/d)/phosphorus intake (mg/d). Calcium balance and percent net calcium absorption were calculated similarly.

	OVX (n = 8)	Sham (n = 8)	P
Baseline estradiol (pg/mL)	4.0 ± 0.6	4.1 ± 1.1	0.99
35 week estradiol (pg/mL)	1.5* ± 0.1	6.5 ± 2.4	0.01

Table 1. Estradiol at baseline (10 weeks, pre-surgery) and 35 weeks. Values are mean ± SEM. *Less than the analytic sensitivity of 3 pg/mL.

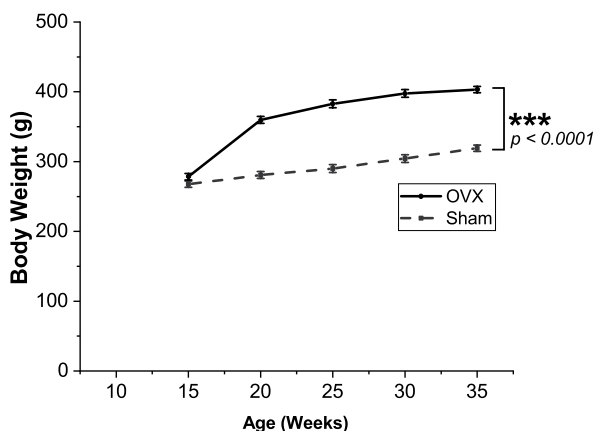


Figure 1. OVX resulted in higher body mass relative to Sham. Values presented are mean ± SEM. *** $p < 0.0001$ between groups.

Plasma biochemistries. Plasma stored at -80°C was thawed and analyzed for mineral biochemistries. Phosphorus, calcium, BUN, and creatinine were measured by colorimetric assay (Phosphorus Kit: Pointe Scientific Inc., Canton, MI; Calcium Kit: Pointe Scientific Inc., Canton, MI; BUN: QuantiChrom Urea Assay Kit, BioAssay Systems, Hayward, CA; Creatinine: QuantiChrom Creatinine Assay Kit; BioAssay Systems, Hayward, CA). Estradiol and intact PTH (iPTH) were measured by enzyme-linked immunosorbent assay (Calbiotech Inc., El Cajon, CA; Alpcos, Salem, NH, respectively).

Microcomputed tomography. Proximal tibiae were analyzed by μCT (Skyscan 1172, $12\ \mu\text{m}$ resolution) using protocols similar to our previous studies²⁷. Trabecular microarchitecture was obtained from a 1 mm region of interest selected approximately 1 mm distal to the tibial growth plate. Bone parameters assessed included trabecular bone volume/tissue volume (BV/TV, %), trabecular thickness (Tb.Th), trabecular number (Tb.N), and trabecular separation (Tb.Sp). Cortical bone analysis was performed on a single slice located 1.5 mm distal from the metaphysis region of analysis with outcome parameters including cortical bone area (Ct.Ar), cortical thickness (Ct.Th), and cortical porosity.

Statistics. Group differences for plasma biochemistries with multiple timepoints (calcium, phosphate, creatinine, BUN, and estradiol) were compared with a linear mixed model with rat ID as a random effect, with post hoc pairwise comparisons. Unpaired, two-tailed t-tests were performed for comparison of group differences in endpoint iPTH, uterine and kidney weights, mineral balance and net absorption, and bone outcomes between OVX and Sham. Estradiol measures were log-transformed because they were not normally distributed, and the reported p values reflect statistical comparisons of the transformed values. Because of unequal variances for uterine weight and all bone outcomes, the Satterthwaite test was used to test for differences. Because two rats were housed per cage, all statistical comparisons were repeated with a linear mixed model with cage ID as a random effect. The cage effect was small and did not alter conclusions with the exception of BUN, for which results are reported as the model including cage as a random effect. All other results were reported without cage ID as a random effect. Statistical significance was set at $\alpha < 0.05$. All statistical tests included all $n = 16$ rats. Statistical Analysis Software version 9.4 (SAS Institute, Cary, NC) was used for all statistical analyses. Results are reported as mean ± SEM.

Results

OVX was deemed successful as evidenced by the lower estradiol at 35 weeks (1.5 ± 0.1 pg/mL vs 6.5 ± 2.4 pg/mL, $p = 0.06$ for group*time interaction, $p = 0.01$ for 35 week pairwise comparison between OVX and Sham, Table 1), as well as significantly lower uterine weight observed at 35 weeks (0.16 ± 0.01 g vs 0.78 ± 0.06 g, respectively; $p < 0.0001$), and greater increase in body weight after OVX compared with Sham ($p < 0.0001$, Fig. 1). Plasma creatinine ($p = 0.40$), phosphorus ($p = 0.58$), and calcium ($p = 0.38$) were not different between OVX and Sham groups. BUN was statistically higher in OVX compared with Sham, but with only a small difference in means at 35 weeks (18.5 ± 0.6 mg/dL vs 16.3 ± 0.8 mg/dL, $p = 0.04$) (Fig. 2), which has low practical relevance when compared to the values of ~ 60 – 107 mg/dL observed in our previous studies in Cy/+ male rats of similar age^{24,32}. Creatinine clearance was not different between groups (4.2 ± 0.2 mL/min vs 4.1 ± 0.2 mL/min for OVX

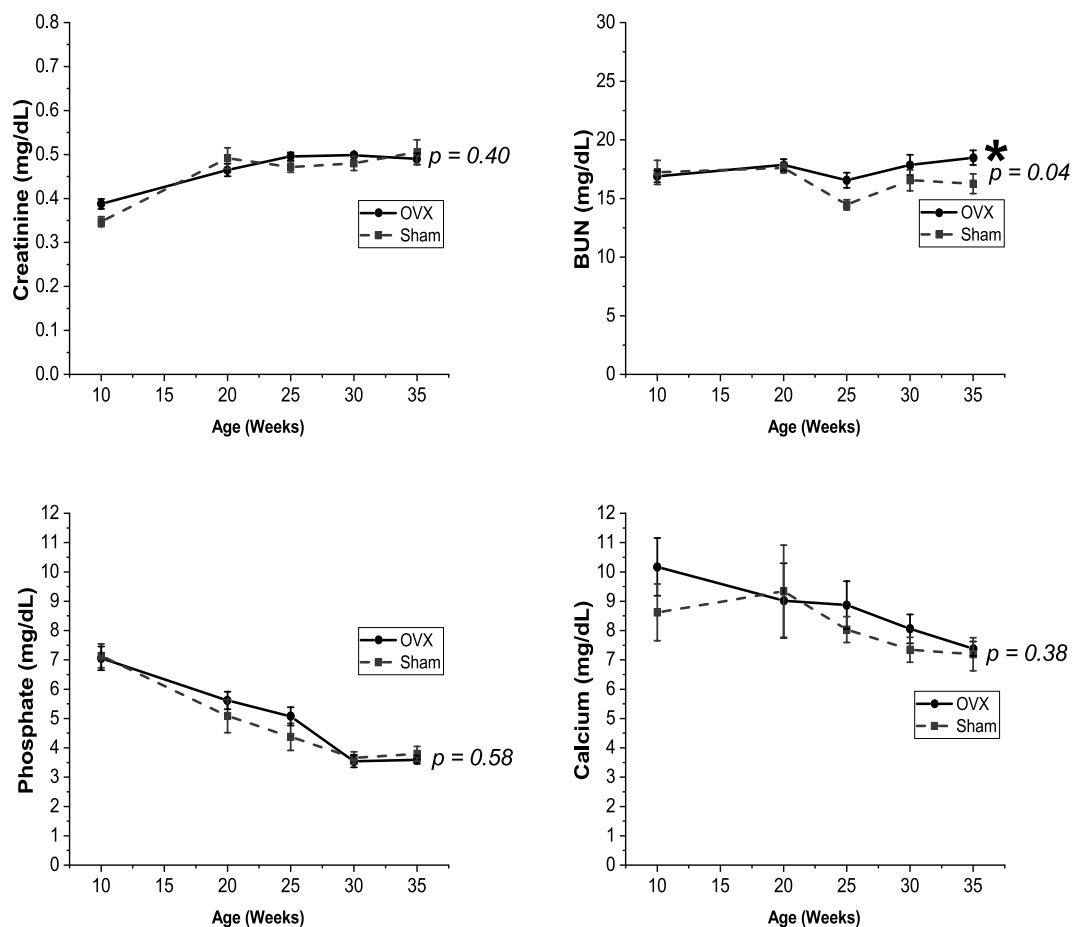


Figure 2. Plasma biochemistries over time between OVX and Sham surgery. Plasma creatinine, phosphate, and calcium were not different between the groups. BUN was statistically higher in the OVX group. Values presented are mean \pm SEM. For comparison reference range for Cy/+ male rats at 34–35 weeks based on Moe *et al.* in^{24,32}: BUN (\sim 60–107 mg/dL), phosphate (\sim 6.8–11.6 mg/dL), calcium (\sim 8.5–9.8 mg/dL). We have also measured plasma creatinine at 0.92 ± 0.06 mg/dL in 30 week Cy/+ males (*unpublished*).

and Sham respectively, $p = 0.83$). In addition, kidney weight was not different between groups (1.417 ± 0.075 g vs 1.382 ± 0.050 g, $p = 0.70$).

Phosphorus balance was lower in OVX rats compared to Sham (-2.8 ± 2.6 mg/day vs 5.4 ± 2.5 mg/day, $p = 0.04$), while calcium balance was also numerically lower but did not reach statistical significance (0.6 ± 2.9 mg/day vs 7.1 ± 2.8 mg/day, $p = 0.12$) (Fig. 3). Similarly, both percent net phosphorus and calcium absorption were numerically lower in OVX rats vs Sham, but neither reached statistical significance ($43 \pm 2\%$ vs $48 \pm 2\%$, $p = 0.08$; $5 \pm 4\%$ vs $12 \pm 3\%$, $p = 0.12$, phosphorus and calcium, respectively) (Fig. 3).

In the tibia, BV/TV and Tb.N were lower in OVX rats ($p < 0.0001$ for both), and Tb.Sp, Ct.Ar, and Ct.Th higher ($p < 0.0001$) compared with Sham (Table 2). Tb.Th was not different between groups ($p = 0.17$) (Table 2). No cortical porosity was noted for any rats (Sham nor OVX) (Fig. 4). Accordingly, no difference in iPTH at 35 weeks between groups was observed (138.7 ± 13.2 pg/mL vs 141.8 ± 20.1 pg/mL for OVX vs Sham, $p = 0.90$).

Discussion

OVX of Cy/+ female rats produced the changes expected with OVX consistent with the postmenopausal condition that included higher body weight, lower uterine weight, and lower trabecular bone volume compared to Sham rats^{33,34}. However, there was no indication that OVX advanced the CKD-MBD phenotype as evidenced by similar creatinine clearance, plasma creatinine, BUN, kidney weight, phosphorus, and calcium compared with Sham. And, although OVX produced expected changes in cancellous bone and cortical area and thickness, the increased cortical porosity that is the hallmark of the CKD-MBD phenotype in male Cy/+ rats³² was not observed in any rats. These findings were contrary to our hypothesis that OVX would promote the development of CKD-MBD in female Cy/+ rats to an extent where they could be a practical female model of CKD-MBD.

Sex differences in the progression of kidney disease have been observed in both rodents and humans, with some conflicting results. Some studies have shown an increase in disease progression in response to OVX. This has been demonstrated in sclerosis-prone ROP Os/+ mice⁵, 5/6 nephrectomized Wistar rats⁶, in rats with streptozotocin-induced diabetic nephropathy⁷, Dahl salt-sensitive rats⁸, and in female Imai rats that develop spontaneous hypercholesterolemia¹⁰. Further, administration of estradiol tended to mitigate the changes^{6–8}. In

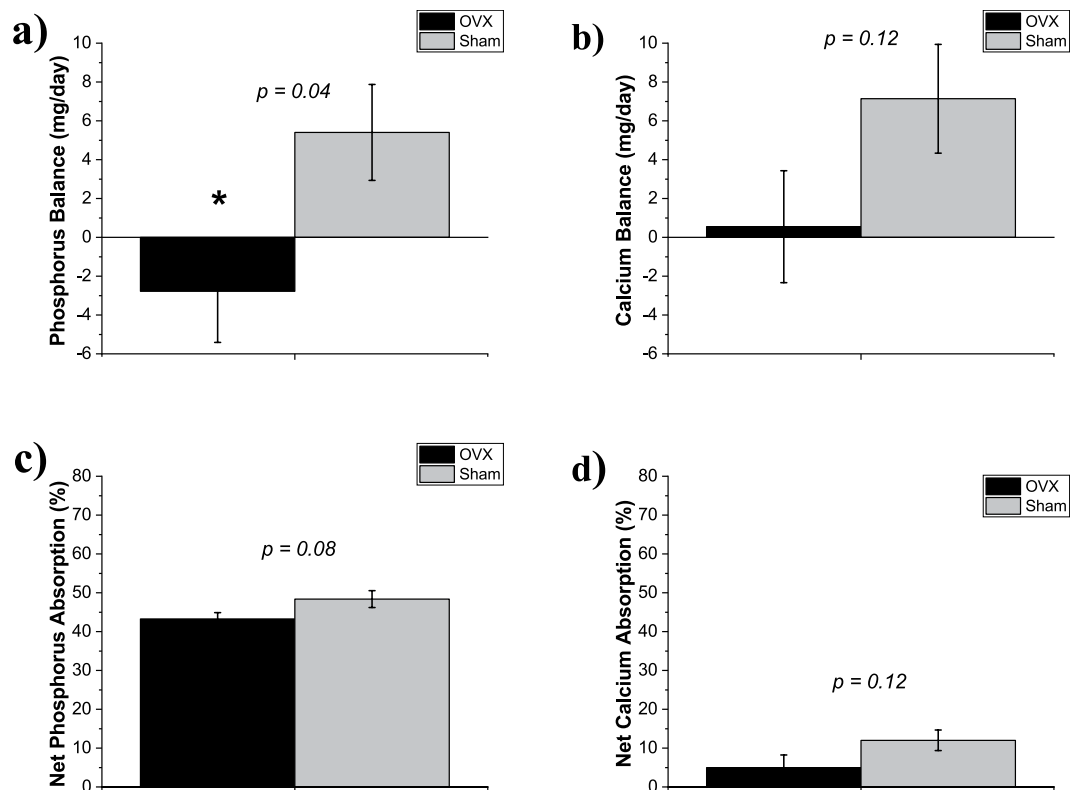


Figure 3. Mineral balance and net mineral absorption at 35 weeks by OVX or Sham surgery. (a) Phosphorus balance was lower in OVX rats vs Sham. (b) Calcium balance was not different between the groups. (c) Percent net phosphorus absorption and (d) percent net calcium absorption were not different between groups. Values presented are mean \pm SE. * $p = 0.04$.



Figure 4. Micro-CT images of the proximal tibia. Representative cross-sectional micro-CT images of the proximal tibia. From left to right: female Cy/+ Sham rats, female Cy/+ OVX rats (present study, Table 2), and for visual comparison, a representative image from a 35-week-old male Cy/+ rat showing prominent cortical porosity (*unpublished*) that is absent from both Sham and OVX female Cy/+ rats in the present study.

	OVX (n = 8)	Sham (n = 8)	P
BV/TV (%)	0.99 \pm 0.34	17.45 \pm 1.59	<0.0001
Tb.N (1/mm ⁻¹)	0.14 \pm 0.04	2.16 \pm 0.13	<0.0001
Tb.Th (mm)	0.07 \pm 0.008	0.08 \pm 0.003	0.17
Tb.Sp (mm)	0.84 \pm 0.02	0.27 \pm 0.01	<0.0001
Ct.Ar (mm ²)	5.93 \pm 0.07	5.22 \pm 0.07	<0.0001
Ct.Th (mm)	0.48 \pm 0.004	0.39 \pm 0.005	<0.0001

Table 2. Microstructural parameters of cancellous and cortical bone of the tibia measured by micro-CT. Values are mean \pm SE. BV/TV (bone volume (BV)/Tissue volume (TV)); Tb.N (trabecular number); Tb.Th (trabecular thickness); Tb.Sp (trabecular separation); Ct.Ar (cortical bone area); Ct.Th (cortical thickness).

female Imai rats, a protective or aggravative effect of estradiol on glomerulosclerosis was dependent on dose¹⁰ which may be mediated by growth hormone³⁵. Additionally, exogenous estradiol in spontaneously hypertensive rats that underwent uninephrectomy, or in female db/db mice, male Imai rats, or male Sprague-Dawley rats has been demonstrated to reduce age-related kidney disease progression^{9,11–13}. The estradiol metabolite 2-hydroxyestradiol has also been shown to be renoprotective in puromycin-aminonucleoside model of nephropathy³⁶. Protective effects of estrogen on renal function have been suggested to be mediated by a reduction in extracellular matrix protein accumulation^{37,38}.

In contrast to the above-mentioned studies, OVX did not worsen kidney disease in female Munich-Wistar rats that progressively develop glomerular injury with age nor 5/6 nephrectomized Wistar rats^{16,17}. Further, some studies have even shown apparent benefits of OVX to renal outcomes: OVX in spontaneous hypertensive stroke-prone female rats increased survival and reduced renal vascular pathology compared to Sham surgery, which was reversed with estradiol administration¹⁸. Similarly, in context of hyperlipidemia in both albuminemic and Zucker rats, OVX was protective against glomerulosclerosis, while exogenous estradiol worsened it^{19,39}.

Previous studies in the Cy/+ rat have demonstrated that females do not develop the pronounced azotemia and fibrosis from cystic disease until much older ages compared with males^{28,29}. A previous study of OVX was conducted in weanling Cy/+ female rats by Cowley *et al.*⁴⁰. These rats underwent OVX at 4 weeks of age and did not exhibit subsequent changes in kidney weight, volume density of renal cysts, or BUN by 10 weeks of age compared to Sham rats. However, testosterone administration induced cystic disease progression⁴⁰. Our findings confirm that this lack of effect of OVX on kidney disease progression is not limited to growing rats in the Cy/+ model of CKD. However, at odds with our results and those of Cowley *et al.* is a study by Stringer *et al.*⁴¹ in which Cy/+ rats underwent OVX at 6 weeks of age, and kidney function was evaluated at 12 weeks of age. These investigators observed that OVX of female rats hastened the progression of polycystic kidney disease, and likewise, orchidectomy in male Cy/+ rats slowed disease progression. The stark difference in ages studied, and particularly age of OVX, makes comparisons among these studies challenging. Our study models more closely a postmenopausal loss of ovarian function versus these prior studies in growing Cy/+ rats that model a deprivation of ovarian function through growth and development. Additionally, our study did not aim to evaluate the cystic kidney disease phenotype in detail, so further studies are needed to determine the mechanistic effects of OVX in adult Cy/+ rats on renal function outcomes.

Interestingly, in our study, OVX rats had lower, but not statistically significant, percent net phosphorus absorption that may suggest that estrogen influences intestinal phosphate transporters. Intestinal tissue is not available from the present study to directly test this mechanistic hypothesis, but there is some prior experimental evidence to support this notion. Acute 17 β -estradiol injection at 2 mg/kg body weight in rats increased intestinal brush boarder membrane vesicle uptake and the mRNA and protein expression of the main known intestinal phosphate transporter, sodium phosphate cotransporter 2b⁴². However, in contrast, a study in female rats of similar age to those in our study found no change in net phosphorus absorption with injection of 5 or 40 μ g/kg 17 β -estradiol for 21 days⁴³. Further research on the effects of ovariectomy and estrogen on phosphorus absorption are needed. OVX also resulted in a non-significant trend towards lower whole-body phosphorus and calcium balance. In a separate study of Cy/+ and WT male rats, we found that phosphorus and calcium balance are also marginally lower in Cy/+ males with CKD compared to normal WT controls⁴⁴. The lower phosphorus and calcium balance in the present study is likely reflective of the loss of bone mass in the OVX rats compared with Sham.

This study has several limitations. First, this study was designed as a feasibility study to determine if OVX of Cy/+ females would produce the biochemical and bone phenotypic features of CKD-MBD that are observed in male Cy/+ rats of similar age. Thus, only two groups of heterozygous Cy/+ females, with OVX or Sham control, were studied, and we relied on historical data in male Cy/+ rats for qualitative comparisons between the sexes. Additionally, because of the study aim of establishing a practical female model of CKD-MBD, our study did not include more detailed assessments of kidney function, such as direct GFR by inulin clearance, urinary protein excretion, or renal histology including cystic lesions and interstitial fibrosis. These in-depth assessments would be needed to draw more substantial conclusions on the mechanistic effects of estrogen deficiency on renal function in this rat model but are not available from the present study. A future study aimed at determining effects of estrogen on kidney function in this model would also ideally include an OVX plus exogenous estrogen treatment group. Further explorations of sex differences and effects of gonadal hormones on kidney disease progression and features of the CKD-MBD phenotype would ideally have groups of both males and females with orchidectomy or OVX, respectively, and possibly hormonal repletion treatments. However, since we observed no overt effects of OVX on the biochemical or bone phenotype in this model, such future studies might be better conducted in other CKD models, such as the 5/6th nephrectomy model.

In summary, OVX did not produce alterations consistent with the CKD-MBD phenotype as observed in our previous work in Cy/+ males as we had hypothesized. Our findings suggest that the OVX Cy/+ rat is not a practical female model for studying postmenopausal CKD-MBD. Development and validation of other female rodent models of CKD-MBD are needed.

Data Availability

Individual data generated or analyzed during this study are included in the Supplementary Information file (Supplementary Data.xlsx).

References

- Hill, N. R. *et al.* Global Prevalence of Chronic Kidney Disease - A Systematic Review and Meta-Analysis. *PLoS One* **11**, e0158765, <https://doi.org/10.1371/journal.pone.0158765> (2016).
- Iseki, K., Iseki, C., Ikemiya, Y. & Fukiyama, K. Risk of developing end-stage renal disease in a cohort of mass screening. *Kidney Int* **49**, 800–805 (1996).

3. Neugarten, J., Acharya, A. & Silbiger, S. R. Effect of gender on the progression of nondiabetic renal disease: a meta-analysis. *J Am Soc Nephrol* **11**, 319–329 (2000).
4. Kummer, S., von Gersdorff, G., Kemper, M. J. & Oh, J. The influence of gender and sexual hormones on incidence and outcome of chronic kidney disease. *Pediatr Nephrol* **27**, 1213–1219, <https://doi.org/10.1007/s00467-011-1963-1> (2012).
5. Elliot, S. J. *et al.* Estrogen deficiency accelerates progression of glomerulosclerosis in susceptible mice. *Am J Pathol* **162**, 1441–1448, [https://doi.org/10.1016/S0002-9440\(10\)64277-0](https://doi.org/10.1016/S0002-9440(10)64277-0) (2003).
6. Antus, B. *et al.* Estradiol is nephroprotective in the rat remnant kidney. *Nephrol Dial Transplant* **18**, 54–61 (2003).
7. Mankhey, R. W., Bhatti, F. & Maric, C. 17beta-Estradiol replacement improves renal function and pathology associated with diabetic nephropathy. *Am J Physiol Renal Physiol* **288**, F399–405, <https://doi.org/10.1152/ajprenal.00195.2004> (2005).
8. Maric, C., Sandberg, K. & Hinojosa-Laborde, C. Glomerulosclerosis and tubulointerstitial fibrosis are attenuated with 17beta-estradiol in the aging Dahl salt sensitive rat. *J Am Soc Nephrol* **15**, 1546–1556 (2004).
9. Gross, M. L. *et al.* Beneficial Effects of Estrogens on Indices of Renal Damage in Uninephrectomized SHRsp Rats. *J Am Soc Nephrol* **15**, 348–358 (2004).
10. Sakemi, T., Tomiyoshi, Y., Miyazono, M. & Ikeda, Y. Estrogen replacement therapy with its physiological dose does not eliminate the aggravating effect of ovariectomy on glomerular injury in hypercholesterolemic female Imai rats. *Nephron* **80**, 324–330, <https://doi.org/10.1159/000045193> (1998).
11. Catanuto, P. *et al.* 17 beta-estradiol and tamoxifen upregulate estrogen receptor beta expression and control podocyte signaling pathways in a model of type 2 diabetes. *Kidney Int* **75**, 1194–1201, <https://doi.org/10.1038/ki.2009.69> (2009).
12. Hajdu, A. & Rona, G. The protective effect of estrogens against spontaneous pancreatic islet and renal changes in aging male rats. *Experientia* **27**, 956–957 (1971).
13. Sakemi, T., Toyoshima, H., Shouno, Y. & Morito, F. Estrogen attenuates progressive glomerular injury in hypercholesterolemic male Imai rats. *Nephron* **69**, 159–165, <https://doi.org/10.1159/000188433> (1995).
14. Kattah, A. G. *et al.* CKD in Patients with Bilateral Oophorectomy. *Clin J Am Soc Nephrol*, <https://doi.org/10.2215/CJN.03990318> (2018).
15. Kattah, A. G. *et al.* Hormone therapy and urine protein excretion: a multiracial cohort study, systematic review, and meta-analysis. *Menopause* **25**, 625–634, <https://doi.org/10.1097/GME.0000000000001062> (2018).
16. Baylis, C. Age-dependent glomerular damage in the rat. Dissociation between glomerular injury and both glomerular hypertension and hypertrophy. *Male gender as a primary risk factor*. *J Clin Invest* **94**, 1823–1829, <https://doi.org/10.1172/JCI117531> (1994).
17. Lemos, C. C., Mandarim-de-Lacerda, C. A., Dorigo, D., Coimbra, T. M. & Bregman, R. Chronic renal failure in male and female rats. *J Nephrol* **18**, 368–373 (2005).
18. Stier, C. T. Jr., Chander, P. N., Rosenfeld, L. & Powers, C. A. Estrogen promotes microvascular pathology in female stroke-prone spontaneously hypertensive rats. *Am J Physiol Endocrinol Metab* **285**, E232–239, <https://doi.org/10.1152/ajpendo.00029.2003> (2003).
19. Joles, J. A., van Goor, H. & Koomans, H. A. Estrogen induces glomerulosclerosis in albuminemic rats. *Kidney Int* **53**, 862–868, <https://doi.org/10.1111/j.1523-1755.1998.00825.x> (1998).
20. Manolagas, S. C., O'Brien, C. A. & Almeida, M. The role of estrogen and androgen receptors in bone health and disease. *Nat Rev Endocrinol* **9**, 699–712, <https://doi.org/10.1038/nrendo.2013.179> (2013).
21. Moe, S. *et al.* Definition, evaluation, and classification of renal osteodystrophy: a position statement from Kidney Disease: Improving Global Outcomes (KDIGO). *Kidney Int* **69**, 1945–1953, <https://doi.org/10.1038/sj.ki.5000414> (2006).
22. Gluhovschi, G. *et al.* Chronic kidney disease and the involvement of estrogen hormones in its pathogenesis and progression. *Rom J Intern Med* **50**, 135–144 (2012).
23. Moe, S. M. *et al.* The pathophysiology of early-stage chronic kidney disease-mineral bone disorder (CKD-MBD) and response to phosphate binders in the rat. *J Bone Miner Res* **26**, 2672–2681, <https://doi.org/10.1002/jbmr.485> (2011).
24. Moe, S. M. *et al.* A rat model of chronic kidney disease-mineral bone disorder. *Kidney Int* **75**, 176–184, <https://doi.org/10.1038/ki.2008.456> (2009).
25. Nagao, S. *et al.* Polycystic kidney disease in Han:SPRD Cy rats is associated with elevated expression and mislocalization of SamCystin. *Am J Physiol Renal Physiol* **299**, F1078–1086, <https://doi.org/10.1152/ajprenal.00504.2009> (2010).
26. Moe, S. M. *et al.* Anti-sclerostin antibody treatment in a rat model of progressive renal osteodystrophy. *Journal of Bone and Mineral Research* **30**, 499–509 (2015).
27. Newman, C. L. *et al.* Compromised vertebral structural and mechanical properties associated with progressive kidney disease and the effects of traditional pharmacological interventions. *Bone* **77**, 50–56, <https://doi.org/10.1016/j.bone.2015.04.021> (2015).
28. Cowley, B. D. Jr. *et al.* Autosomal-dominant polycystic kidney disease in the rat. *Kidney Int* **43**, 522–534 (1993).
29. Kaspareit-Rittinghausen, J., Deerberg, F., Rapp, K. G. & Wcislo, A. A new rat model for polycystic kidney disease of humans. *Transplant Proc* **22**, 2582–2583 (1990).
30. Rathi, M. & Ramachandran, R. Sexual and gonadal dysfunction in chronic kidney disease: Pathophysiology. *Indian J Endocrinol Metab* **16**, 214–219, <https://doi.org/10.4103/2230-8210.93738> (2012).
31. Allen, M. R. *et al.* Skeletal effects of zoledronic acid in an animal model of chronic kidney disease. *Osteoporos Int* **24**, 1471–1481, <https://doi.org/10.1007/s00198-012-2103-x> (2013).
32. Moe, S. M. *et al.* A comparison of calcium to zoledronic acid for improvement of cortical bone in an animal model of CKD. *Journal of Bone and Mineral Research* **29**, 902–910 (2014).
33. McElroy, J. F. & Wade, G. N. Short- and long-term effects of ovariectomy on food intake, body weight, carcass composition, and brown adipose tissue in rats. *Physiol Behav* **39**, 361–365 (1987).
34. Kalu, D. N. The ovariectomized rat model of postmenopausal bone loss. *Bone Miner* **15**, 175–191 (1991).
35. Nakamura, M., Ikeda, Y., Mine, M., Tomiyoshi, Y. & Sakemi, T. Somatostatin analogue attenuates estrogen-induced augmentation of glomerular injury in spontaneous hypercholesterolemic female Imai rats. *Nephron* **89**, 448–454, <https://doi.org/10.1159/000046118> (2001).
36. Tofovic, S. P., Dubey, R., Salah, E. M. & Jackson, E. K. 2-Hydroxyestradiol attenuates renal disease in chronic puromycin aminonucleoside nephropathy. *J Am Soc Nephrol* **13**, 2737–2747 (2002).
37. Mankhey, R. W., Wells, C. C., Bhatti, F. & Maric, C. 17beta-Estradiol supplementation reduces tubulointerstitial fibrosis by increasing MMP activity in the diabetic kidney. *Am J Physiol Regul Integr Comp Physiol* **292**, R769–777, <https://doi.org/10.1152/ajpregu.00375.2006> (2007).
38. Pottier, M. *et al.* Estrogen-related abnormalities in glomerulosclerosis-prone mice: reduced mesangial cell estrogen receptor expression and pro-sclerotic response to estrogens. *Am J Pathol* **160**, 1877–1885, [https://doi.org/10.1016/S0002-9440\(10\)61134-0](https://doi.org/10.1016/S0002-9440(10)61134-0) (2002).
39. Stevenson, F. T. *et al.* Estrogen worsens incipient hypertriglyceridemic glomerular injury in the obese Zucker rat. *Kidney Int* **57**, 1927–1935, <https://doi.org/10.1046/j.1523-1755.2000.00042.x> (2000).
40. Cowley, B. D., Rupp, J. C., Muessel, M. J. & Gattone, V. H. Gender and the effect of gonadal hormones on the progression of inherited polycystic kidney disease in rats. *American journal of kidney diseases: the official journal of the National Kidney Foundation* **29**, 265–272 (1997).
41. Stringer, K. D. *et al.* Gender hormones and the progression of experimental polycystic kidney disease. *Kidney Int* **68**, 1729–1739, <https://doi.org/10.1111/j.1523-1755.2005.00589.x> (2005).

42. Xu, H. *et al.* Regulation of intestinal NaPi-IIb cotransporter gene expression by estrogen. *Am J Physiol Gastrointest Liver Physiol* **285**, G1317–1324, <https://doi.org/10.1152/ajpgi.00172.2003> (2003).
43. Arjmandi, B. H., Hollis, B. W. & Kalu, D. N. *In vivo* effect of 17 beta-estradiol on intestinal calcium absorption in rats. *Bone Miner* **26**, 181–189 (1994).
44. Vorland, C. J., Lachcik, P. L., Moe, S. M., Chen, N. X. & Hill Gallant, K. M. Effect of Kidney Disease Progression on Intestinal Phosphorus Absorption in Male Cy/+ Chronic Kidney Disease Rats. *Journal of Bone and Mineral Research* **33**, 297–297 (2018).

Acknowledgements

This work was supported by a Women's Global Health Institute Mildred Elizabeth Edmundson Research Grant (KMHG), NIH K01 DK102864 (KMHG), NIH R01 DK11087103 (SMM and MRA) and VA Merit Awards (SMM-BX001471 and MRA- BX003025). This project was funded, in part, with support from the Indiana Clinical and Translational Sciences Institute funded, in part by Award Number UL1TR002529 from the National Institutes of Health, National Center for Advancing Translational Sciences, Clinical and Translational Sciences Award. The content is solely the responsibility of the authors and does not necessarily represent the official views of the National Institutes of Health. The authors thank Shruthi Srinivasan for technical assistance.

Author Contributions

Author's roles: Study design: KMHG. Study conduct: CJV, PJJ, KMHG. Data collection: CJV, KMHG, NXC, SMM, MRA, CEM, EAS. Data interpretation: CJV, KMHG, SMM, MRA. Drafting manuscript: CJV and KMHG. Revising manuscript content: CJV, KMHG, SMM, MRA, NXC, PJJ. Approving final version of manuscript: all authors. KMHG and CJV take responsibility for the integrity of the data analysis.

Additional Information

Supplementary information accompanies this paper at <https://doi.org/10.1038/s41598-019-44415-9>.

Competing Interests: Dr. Vorland has nothing to disclose. Pamela Lachcik has nothing to disclose. Elizabeth Swallow has nothing to disclose. Dr. Metzger has nothing to disclose. Dr. Allen has nothing to disclose. Dr. Chen has nothing to disclose. Dr. Moe reports grants from NIH, Veterans Administration, Chugai, Keryx, and personal fees from Amgen outside the submitted work. Dr. Hill Gallant reports grants from Women's Global Health Institute, Indiana Clinical and Translational Science Institute, National Institutes of Health/National Institute of Diabetes, Digestive and Kidney Disorders, and American Society for Bone and Mineral Research during the conduct of the study; grants from Chugai Pharmaceuticals, Inc., and personal fees from Reylpsa, Inc., Tricida, Inc., and Sanofi outside the submitted work.

Publisher's note: Springer Nature remains neutral with regard to jurisdictional claims in published maps and institutional affiliations.



Open Access This article is licensed under a Creative Commons Attribution 4.0 International License, which permits use, sharing, adaptation, distribution and reproduction in any medium or format, as long as you give appropriate credit to the original author(s) and the source, provide a link to the Creative Commons license, and indicate if changes were made. The images or other third party material in this article are included in the article's Creative Commons license, unless indicated otherwise in a credit line to the material. If material is not included in the article's Creative Commons license and your intended use is not permitted by statutory regulation or exceeds the permitted use, you will need to obtain permission directly from the copyright holder. To view a copy of this license, visit <http://creativecommons.org/licenses/by/4.0/>.

© The Author(s) 2019